



Beginning to Make New Gold Discoveries

*Corporate Presentation
Kalgoorlie WA
6 August 2018*

ASX: AME
www.altometals.com.au

Disclaimer & Competent Persons Statement



Disclaimer Notice

The material in this presentation ("material") is not and does not constitute an offer, invitation or recommendation to subscribe for, or purchase any security in Alto Metals Limited ("Alto") nor does it form the basis of any contract or commitment. Alto makes no representation or warranty, express or implied, as to the accuracy, reliability or completeness of this material. Alto, its directors, employees, agents and consultants shall have no liability, including liability to any person by reason of negligence or negligent misstatement, for any statements, opinions, information or matters, express or implied, arising out of, contained in or derived from, or for any omissions from this material except liability under statute that cannot be excluded.

Forward Looking Statements

Statements contained in this material, particularly those regarding possible or assumed future performance, costs, dividends, production levels or rates, prices, resources, reserves or potential growth of Alto Metals, industry growth or other trend projections are, or may be, forward looking statements. Such statements relate to future events and expectations and, as such, involve known and unknown risks and uncertainties. Actual results and developments may differ materially from those expressed or implied by these forward looking statements depending on a variety of factors.

Competent Persons' Statement

The information in this Report that relates to Exploration Targets and Alto Metals Ltd's Exploration Results is based on information compiled by Mr Dermot Ryan, who is an employee of Xserv Pty Ltd and a Director and security holder of the Company. Mr Ryan is a Fellow of the Australasian Institute of Mining and Metallurgy and a Fellow of the Australian Institute of Geoscientists and has sufficient experience of relevance to the styles of mineralisation and the types of deposits under consideration, and to the activities undertaken, to qualify as a Competent Person as defined in the 2012 Edition of the Joint Ore Reserves Committee (JORC) Australasian Code for Reporting of Exploration Results, Mineral Resources and Ore Reserves. Mr Ryan consents to the inclusion in this report of the matters based on information in the form and context in which it appears.

Mineral Resource estimates for Lord Nelson and Lord Henry contained in this presentation were estimated in 2016/17 by Snowden Mining Industry Consultants and are reported pursuant to the 2012 Edition of the JORC Code.

All historic exploration results and mineral resources referred to in this Report were previously reported by Troy Resources NL pursuant to 2004 Edition of the JORC Code, and are based on information reported in the 2011 Troy Resources Limited Annual Report (TRY:ASX release 21 October 2011) and the Snowden Mining Industry Consultants, June 2007, National Instrument 43-101 Technical Report-Sandstone (TRY: ASX release 10 December 2007) which also details drilling and sampling methods, quality control and analytical methods. The Company is not aware of any new information or data that materially affects the information provided in the 2011 Troy Resources Annual Report and the Snowden Mining Industry Consultants 2007 Report, and considers that all of the previous assumptions and technical parameters underpinning the estimates and drill results in the previous announcements have not materially changed.

The resource estimates reported by Troy are consistent with the 2004 JORC Code guidelines and are not reported in accordance with the JORC 2012 Code and a Competent Person has not completed sufficient work to accurately classify the 2004 estimates as Mineral Resources under the JORC 2012 Code. Indeed it is uncertain if, following further exploration, the 2004 estimates will be able to be reported as Mineral Resources in accordance with the JORC 2012 Code. The Company is in the process of upgrading the historical published Mineral Resources to JORC 2012 as a matter of priority. There is a low level of geological confidence associated with Inferred Mineral Resources and there is no certainty that further exploration work will result in the conversion of Inferred Mineral Resources to Indicated Mineral Resources.

Corporate Overview



Share Price Close 3 Aug 2018	\$0.055
Shares on Issue	185.5M
Performance Shares (vendors)	25M
Performance Rights (management)	6.75M
Market Capitalisation	~\$10M
Cash at 30 June 2018	\$0.9M

Terry Streeter

Non-executive Chairman

Founder & former Chairman Western Areas NI

Dermot Ryan

Managing Director

Exploration geologist 41 years experience

Terry Wheeler

Non-executive Director

Minerals Chemist- Businessman 50 years experience

Dr Jingbin Wang

Non-executive Director

Geologist + 25 years global experience

Pat Holywell

CFO & Company Secretary

Accountant +15 years experience

Dr Changshun Jia

Chief Geologist

Geologist +15 years experience

Dr David Groves

Chairman of Alto External Research Committee

Emeritus Professor of Geology- UWA- retired

Top 10 hold 96.4M Shares (51.4%)

2 Aug 2018

Rank	Name	Units	%
1	WINDSONG VALLEY PTY LTD <WHEELER FAMILY A/C>	31,405,198	16.93
2	SINOTECH (HONG KONG) CORPORATION LIMITED	15,900,000	8.57
3	ENTERPRISE METALS LTD	12,000,000	6.47
4	MR STEPHEN STONE <THE PEARLSTONE A/C>	8,787,500	4.74
5	CROWNLUXE INVESTMENT LTD	7,500,000	4.04
6	MR DERMOT MICHAEL RYAN + MRS VIVIENNE ELEANOR RYAN	6,590,141	3.55

Alto Metals share price – 12 Months



Summary

- 100% of most of Sandstone Goldfield
- 1.3Moz gold produced up to 2010
- A systematic approach to exploration over past two years by Alto
- Now beginning to make new discoveries
- And seeking a pathway to gold production having substantially compiled our own database
- Scoping study underway to assess potential for mining project to generate cash to fund ongoing exploration for major deposit(s)

Sandstone, in a 60Moz gold province



Jundee, Agnew, Gwalia: Drilling to +1,000m depth

Mining History - High Grade Gold Field

- **1894 -1920 - underground**

Hacks u/g: 206Koz @ **24.0** g/t Au

Oroya u/g: 223Koz @ **16.5** g/t Au

Bull Oak u/g: 40Koz @ **28.9** g/t Au

- **1993 – 1997 - open cut**

Herald Resources NL

Oroya+Bull Oak: ~125Koz

- **1999 - 2010 - open cut**

Troy Resources NL

Bulchina: 250Koz @ 3.4 g/t Au

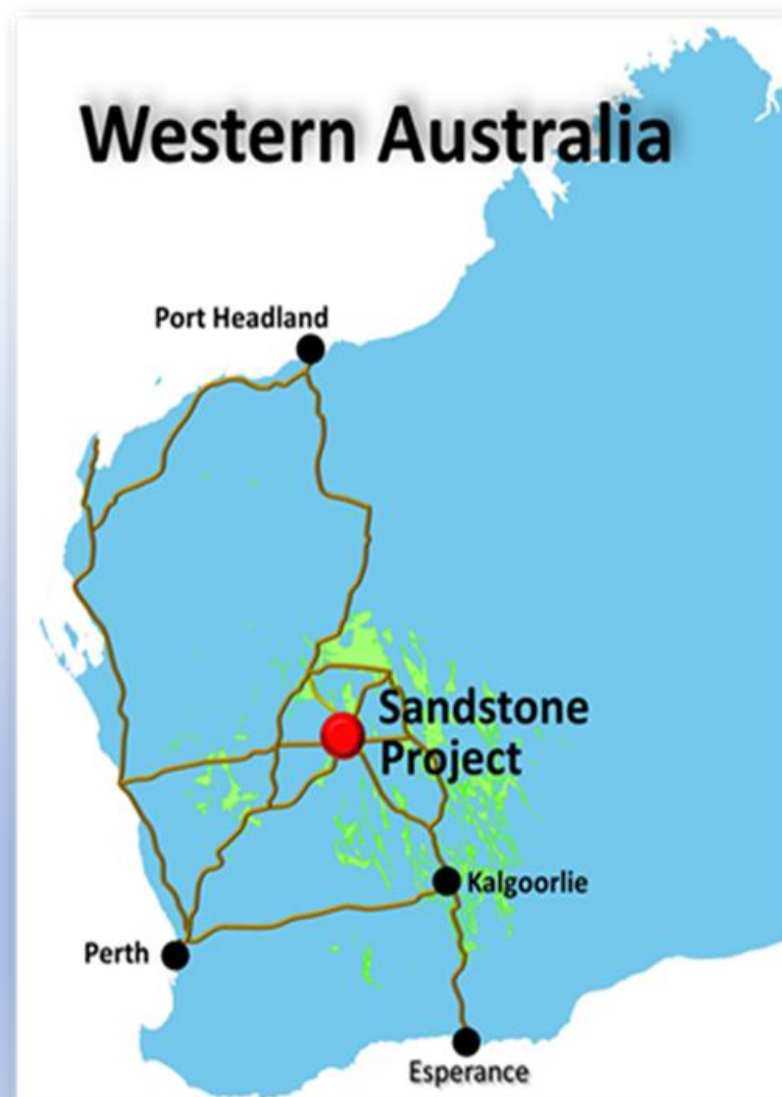
Lord Nelson: 207Koz @ 4.6 g/t Au

Lord Henry : 48Koz @ 3.6 g/t Au

*Comment: Small oxide plant drove
previous exploration strategy 1993-2010*

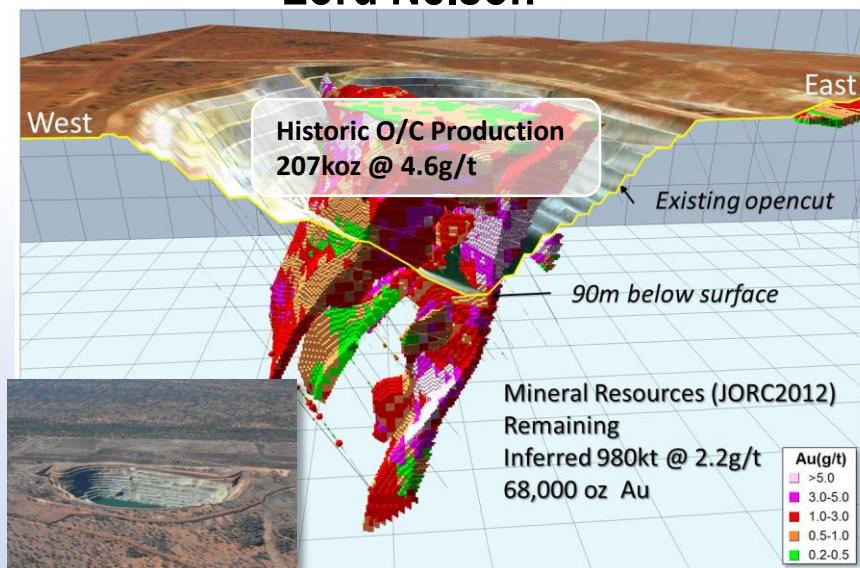
Eg: Average RC hole: 41 metres

Average RAB/AC: 36 metres

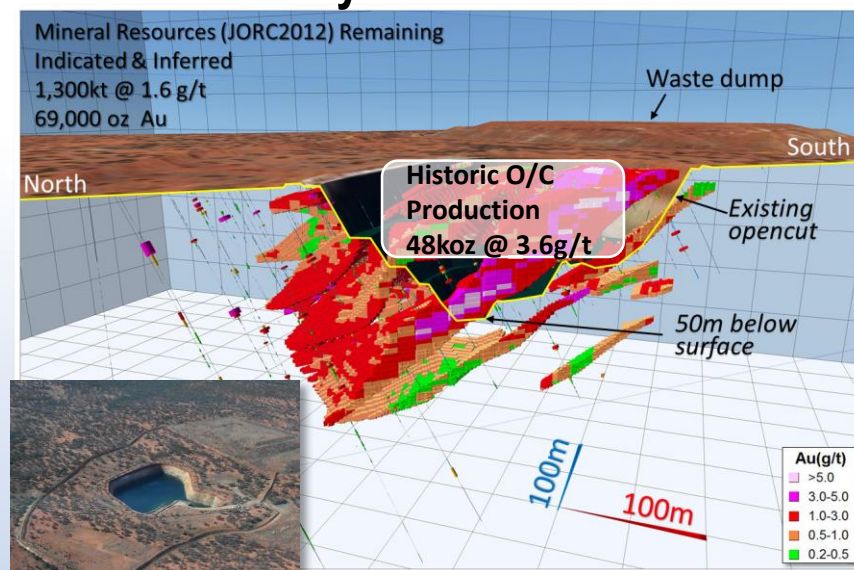


JORC (2012) Current Deposits

Lord Nelson



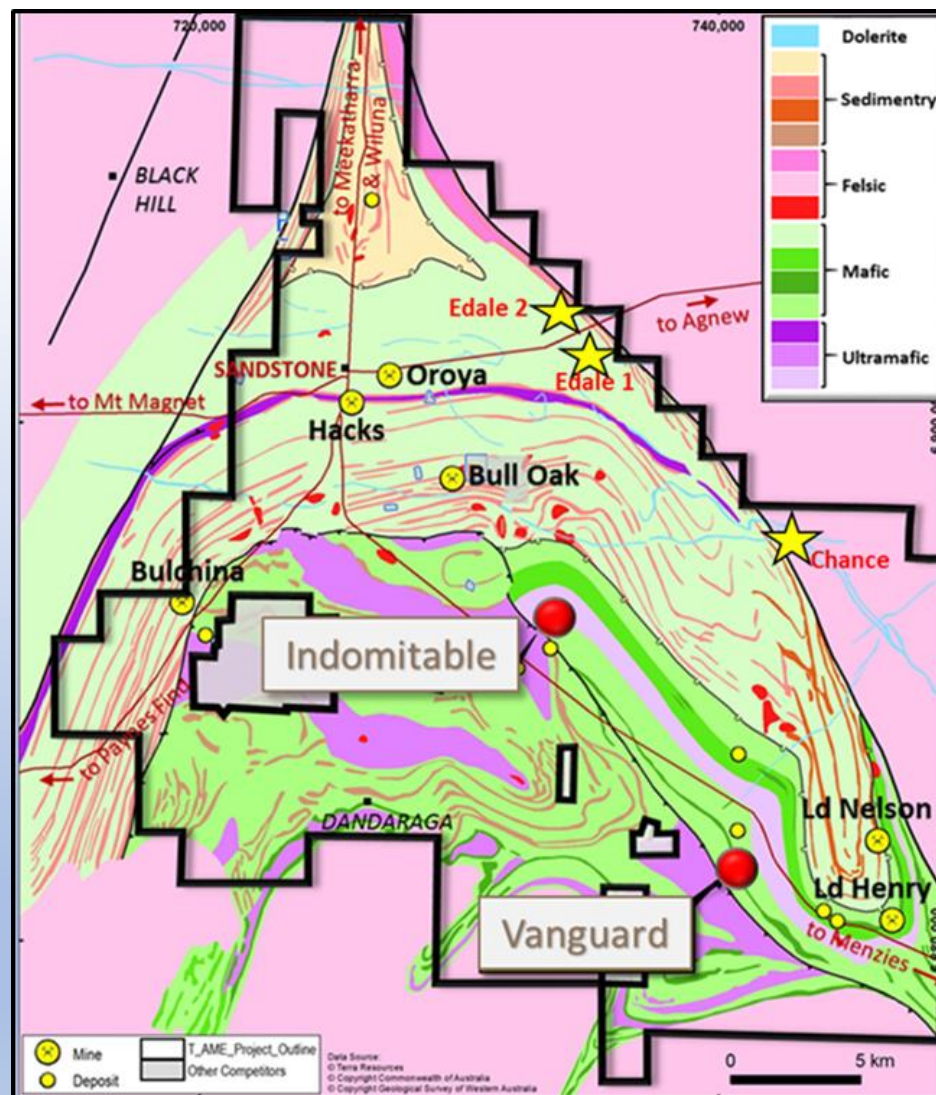
Lord Henry



Systematic Approach to Exploration

(applied over past 2 years)

- Compilation of available historical drilling, geochemical and geological data
- Detailed magnetic surveys
- Litho-structural interpretation for targets
- Input from various consultants
- Integration of above produced the new geological plan
- Which identified 5 camp style Target Areas, ranked by potential prospectivity
- Initial focus on Vanguard - Indomitable camps in “Mafic Terrane”
- 253 aircore holes (12,205m) drilled in June Quarter 2018, following extensive soil sampling program



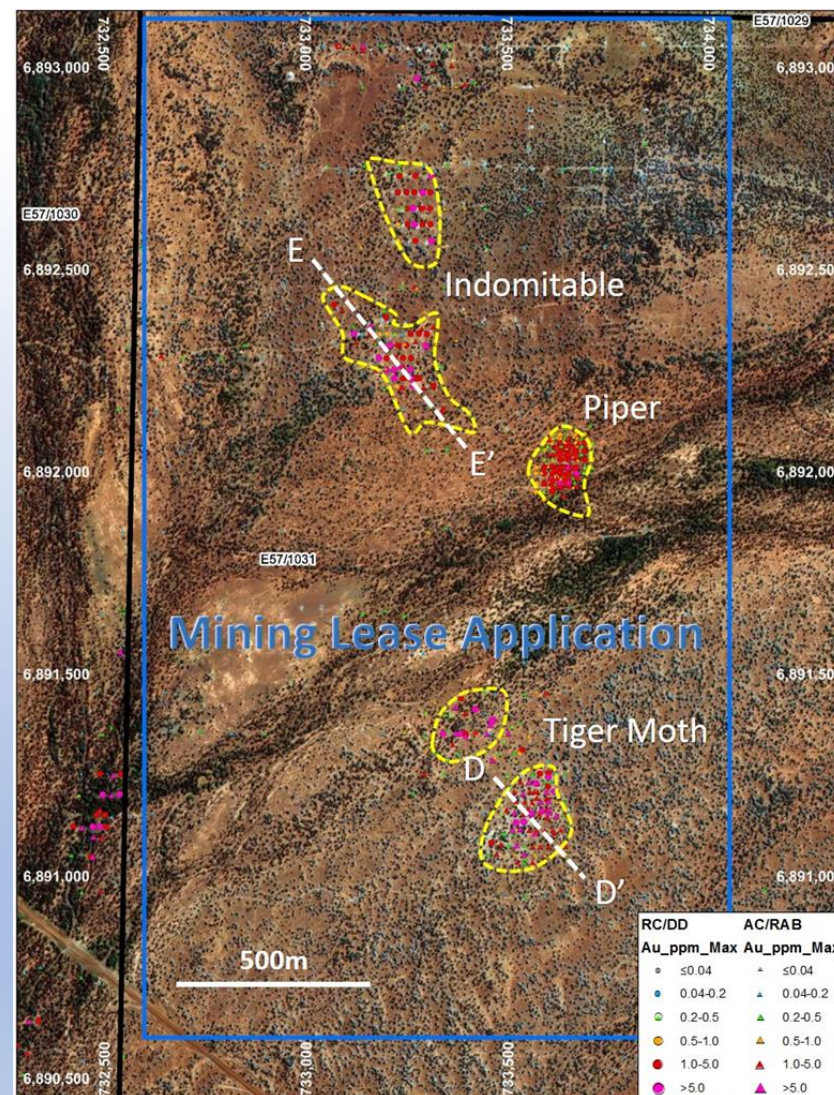
Seeking a Pathway to Gold Production

SHORT TERM

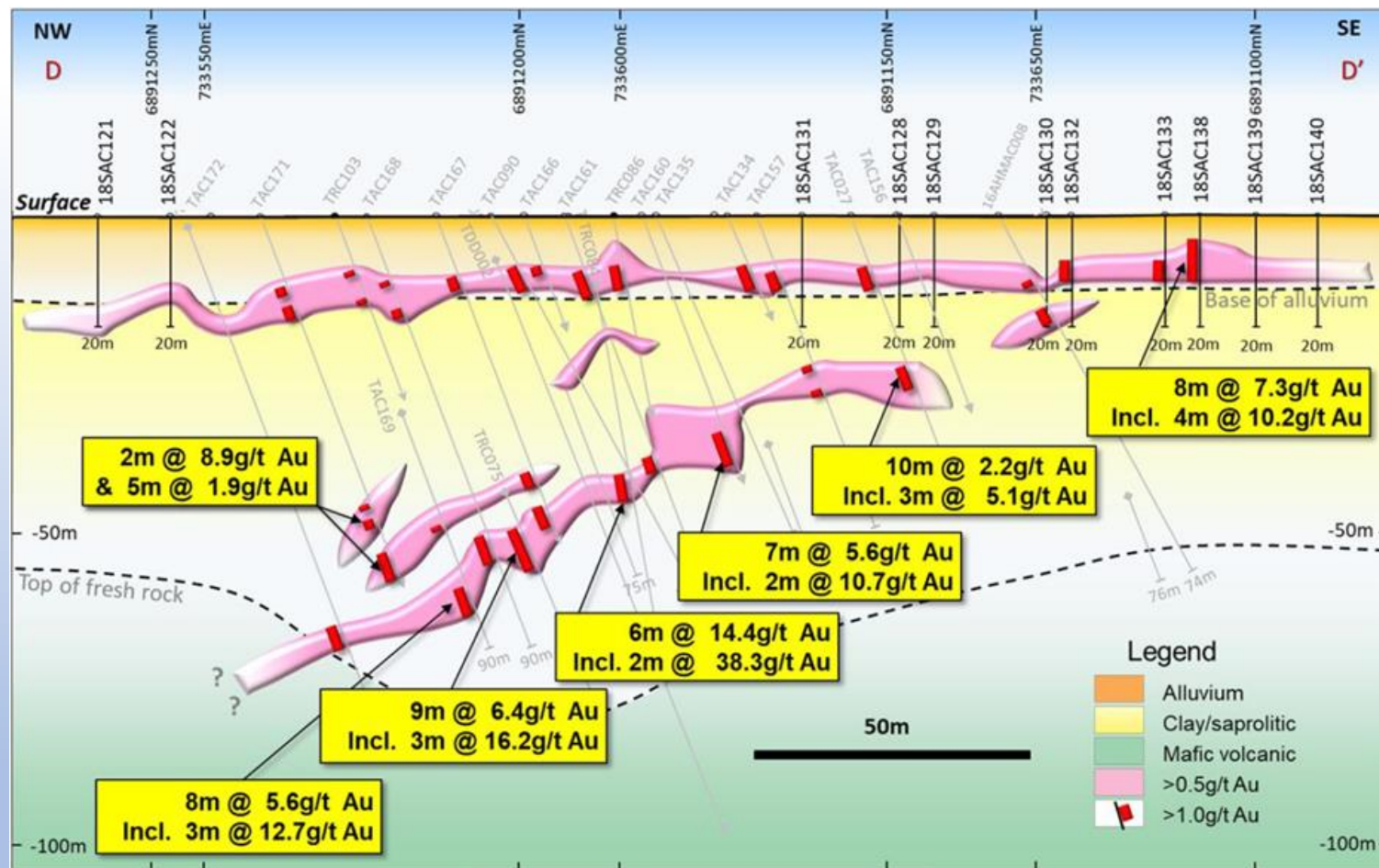
- Indomitable Camp
- Vanguard Camp
- **Bull Oak camp:** (including open pit and extensions)
- **Litho-structural targets**
- **Soil anomalies**

MEDIUM TERM

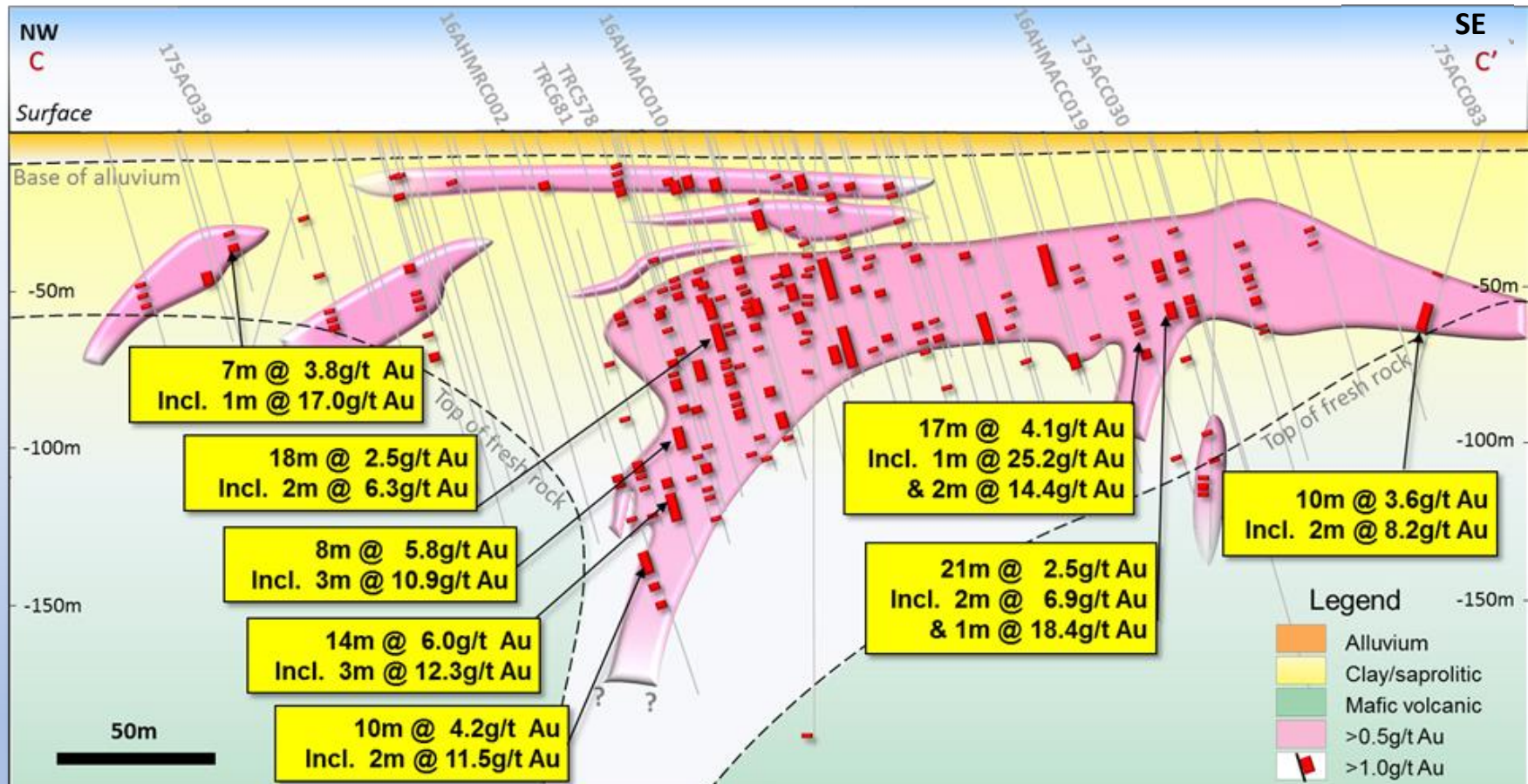
- Reviewing ability of existing open pits to be cut back and/or deepened
 - **Lord Nelson:** current resource open and plunging deeper to south
 - **Lord Henry:** current resource open and dipping to north



Tiger Moth Long Section (width +/- 20m)



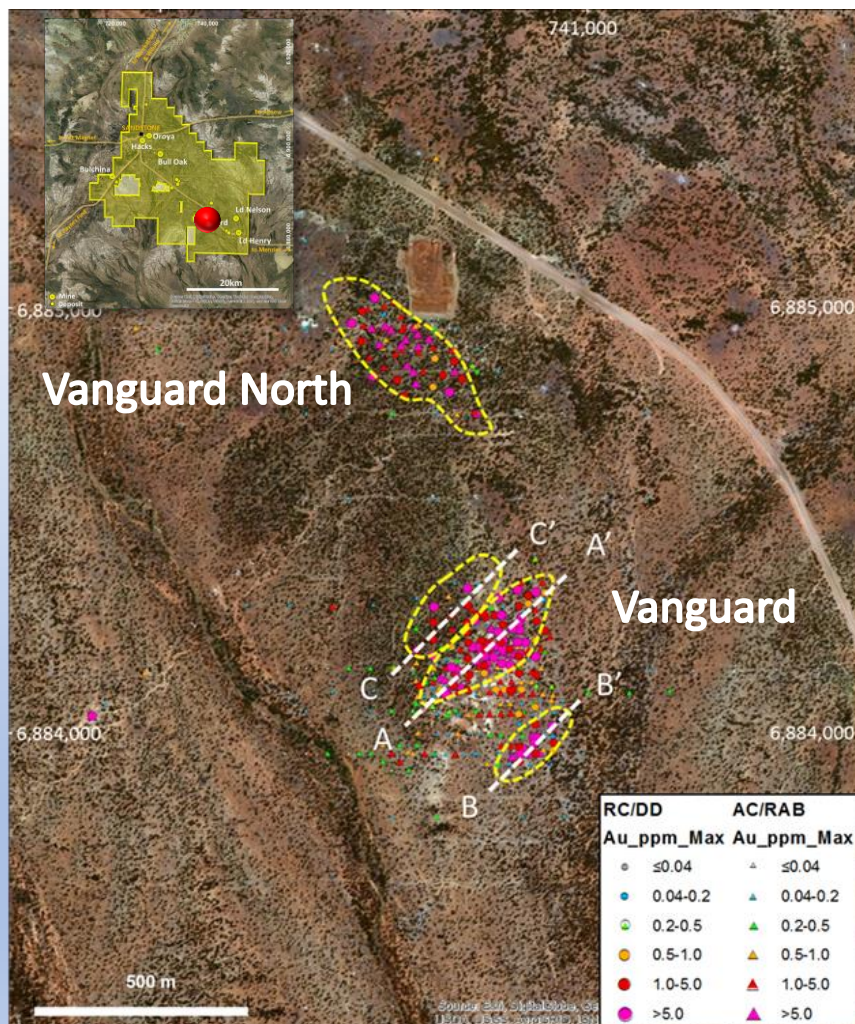
Indomitable Long Section (width +/- 30m)



- Five metres of alluvium hid mineralization from early prospectors
- Deep tongue of oxidation (+200m deep) follows mineralization plunging off to NW
- Gold grades improve down plunge as mineralized structure approaches fresh rock

Early Drilling Success – but more drilling required

VANGUARD CENTRE



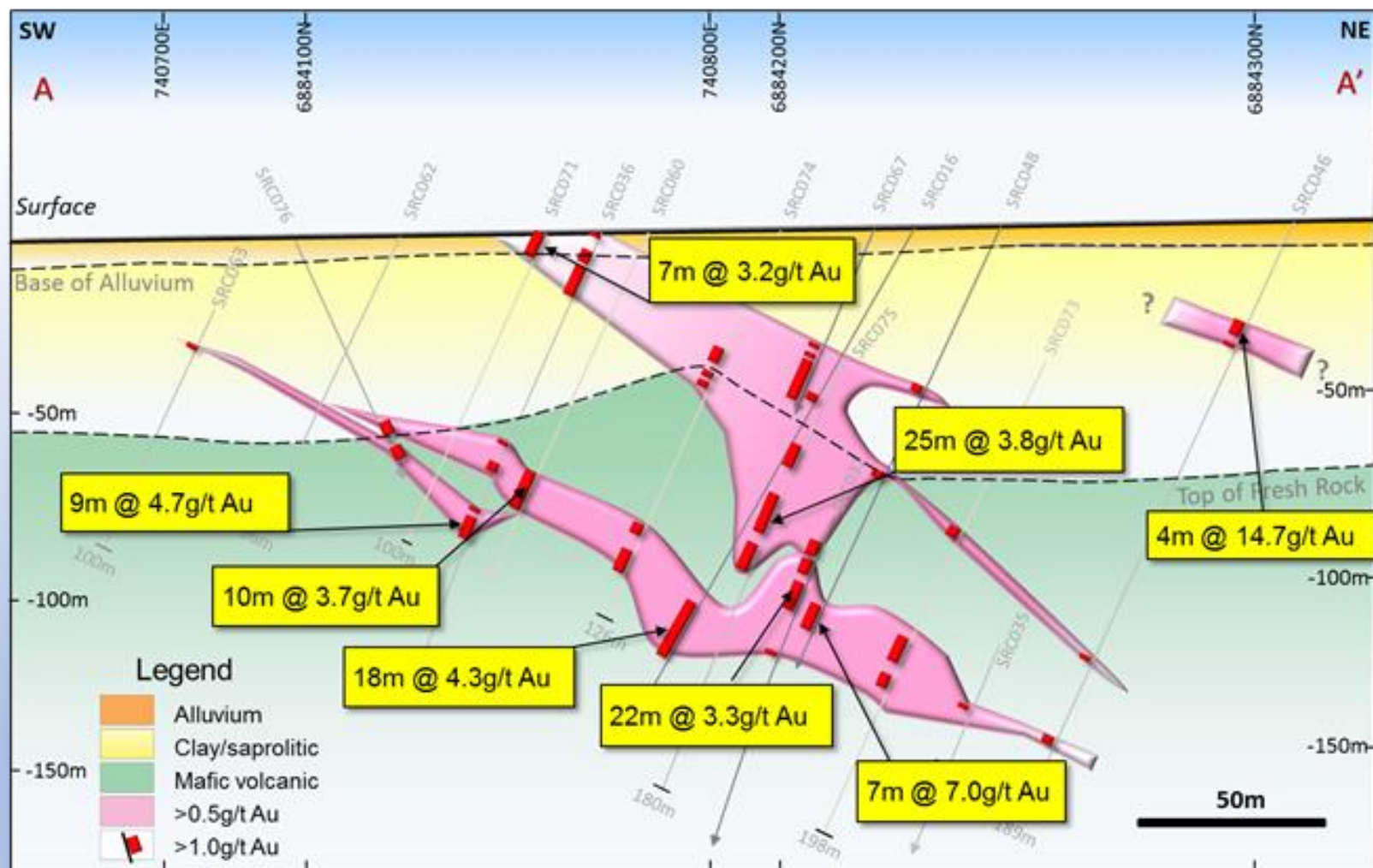
Vanguard Oxide Intersections

Hole ID	From (m)	To (m)	Interval (m)	Grade (g/t Au)
SRC046	34	42	8	7.8
SRC064	28	57	29	2.3
SRC067	39	72	33	2.3

Vanguard Primary Intersections

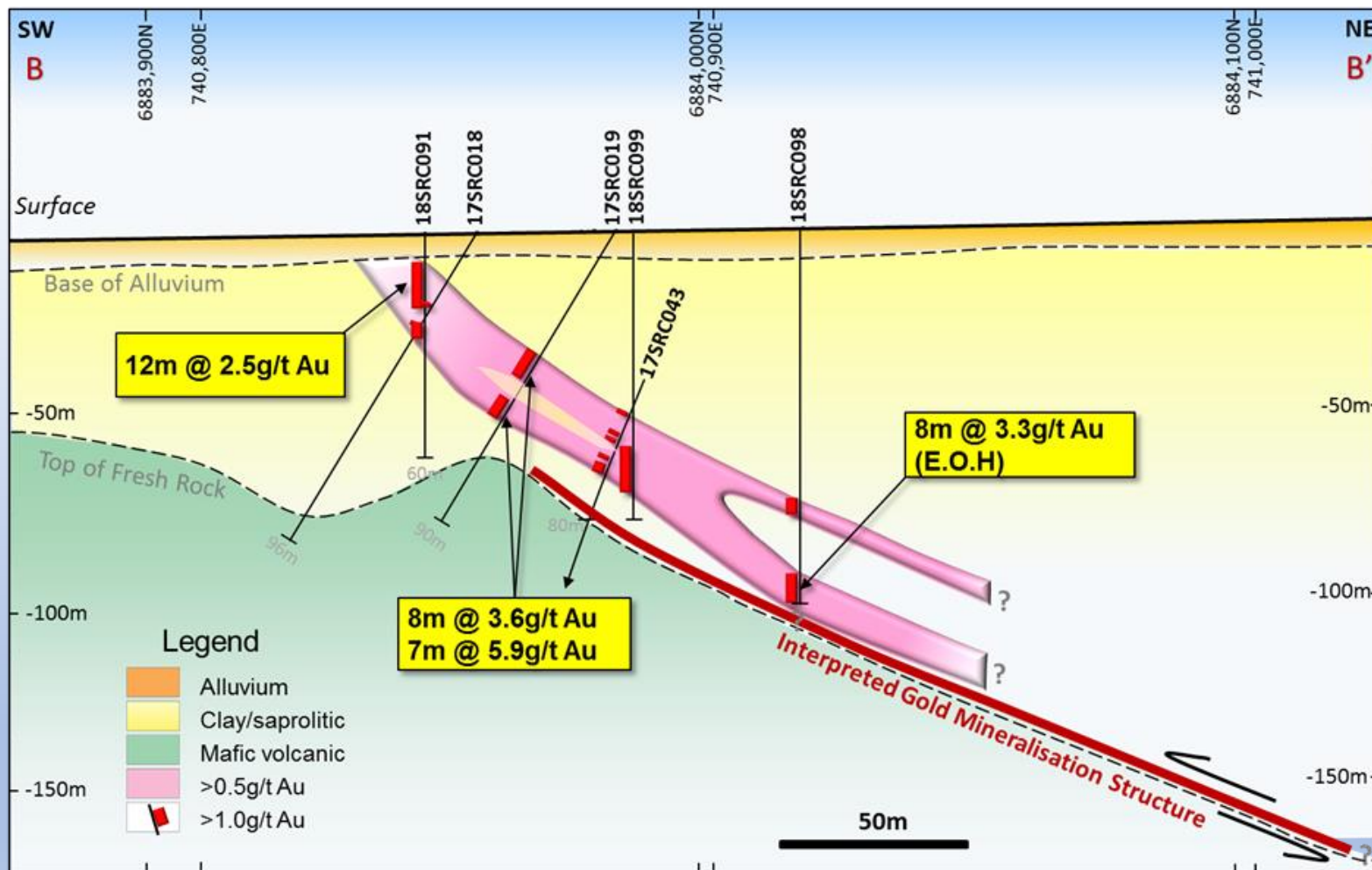
Hole ID	From (m)	To (m)	Interval (m)	Grade (g/t Au)
SRC075	28	50	22	4.2
SRC016	133	150	17	4.5
SRC032	109	131	22	3.3
SRC048	128	135	7	7

Vanguard Section "A"



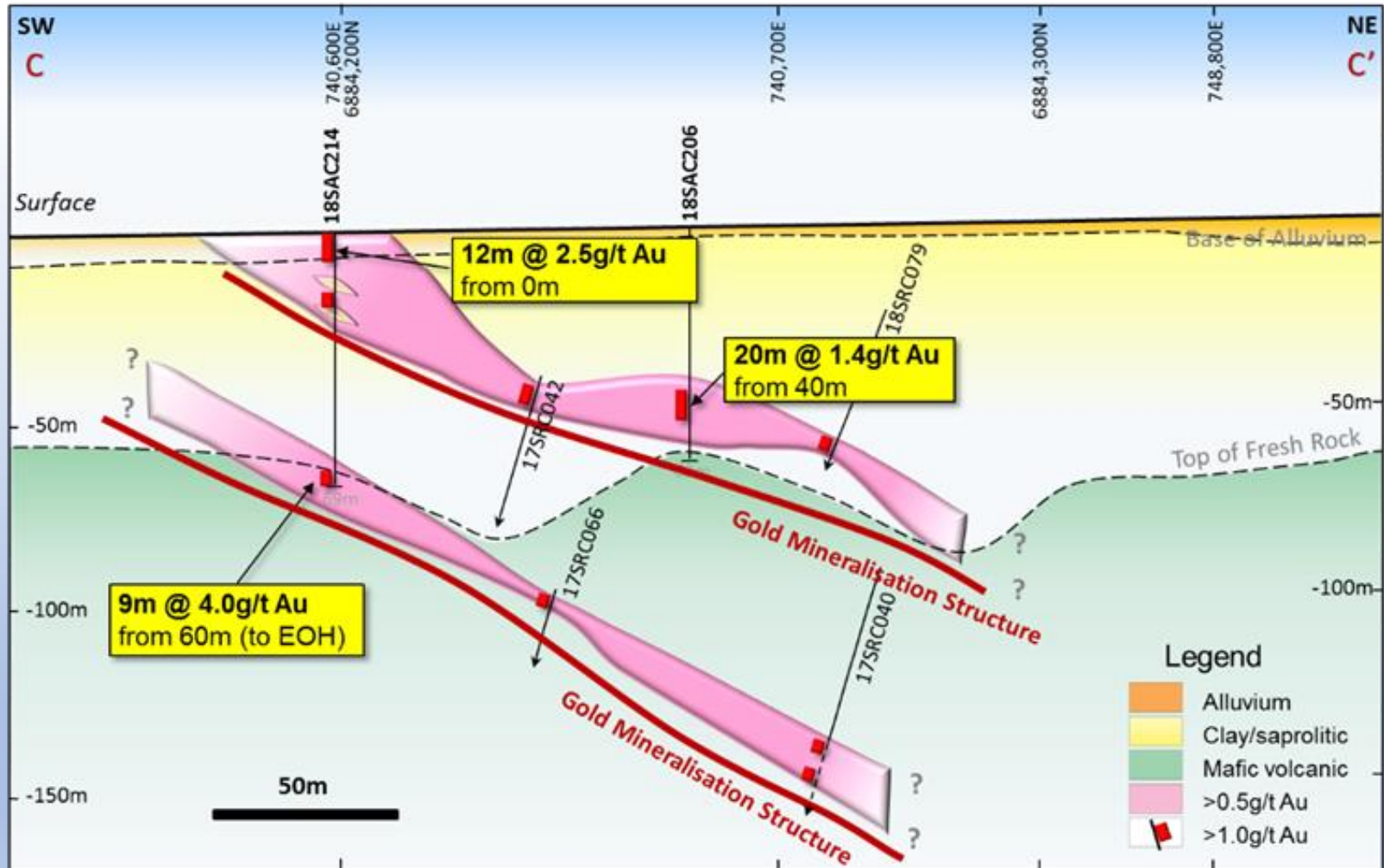
- Oxide gold mineralization close to surface.
- Primary gold mineralization open at depth with improving grades

Vanguard Section "B"



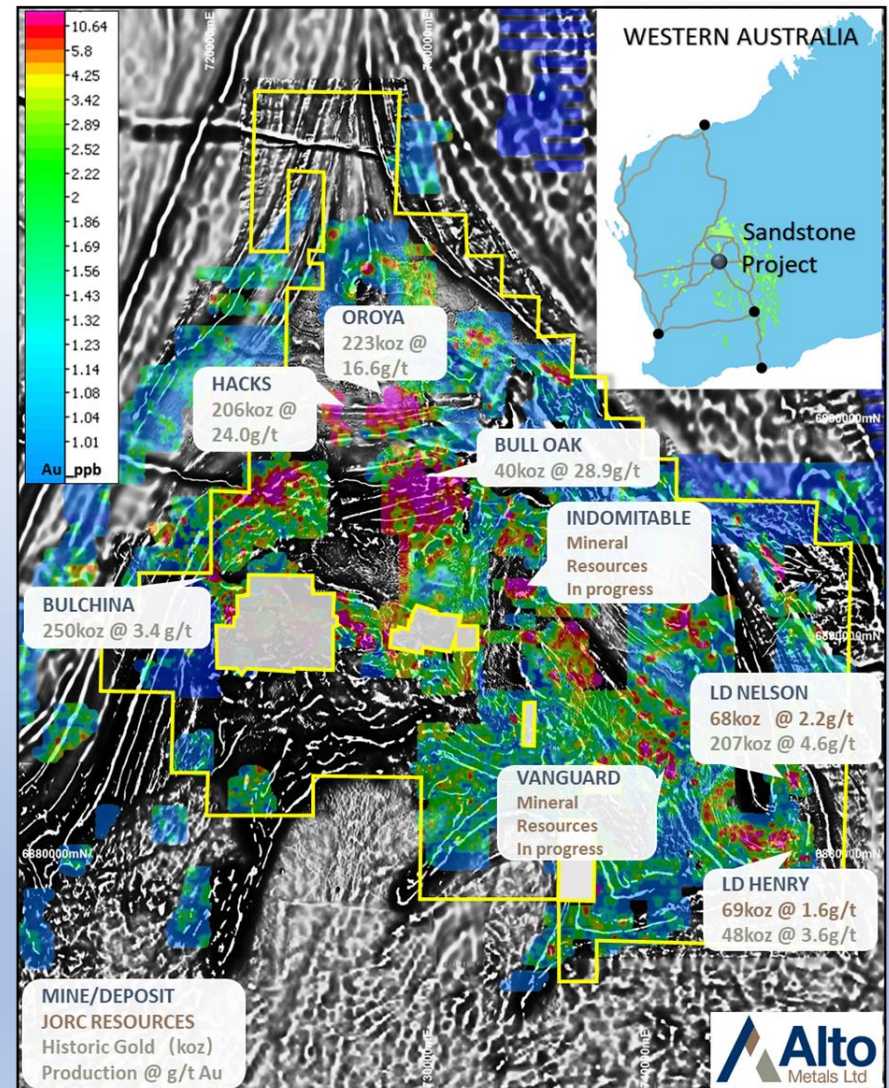
- Oxide gold mineralization close to surface.
- Primary gold mineralization open at depth with improving grades

Vanguard Section "C"



2018 Alto Soil Sampling Program

- Orientation soil sampling at **Vanguard** and **Maninga Marley** demonstrated **successful methodology** (Feb 2018)
- ~3,000 sample soil program completed (May 2018) to cover Alto's litho-structural targets and complement historic soil surveys
- Multiple priority target areas defined by soil program, eg: **Valiant, Edale 1 & 2, Hancocks, Superb, Bulletin, and others**
- Additional soil sampling in progress to refine targets
- Soil assay results have prioritised targets for aircore drill testing Q3, 2018

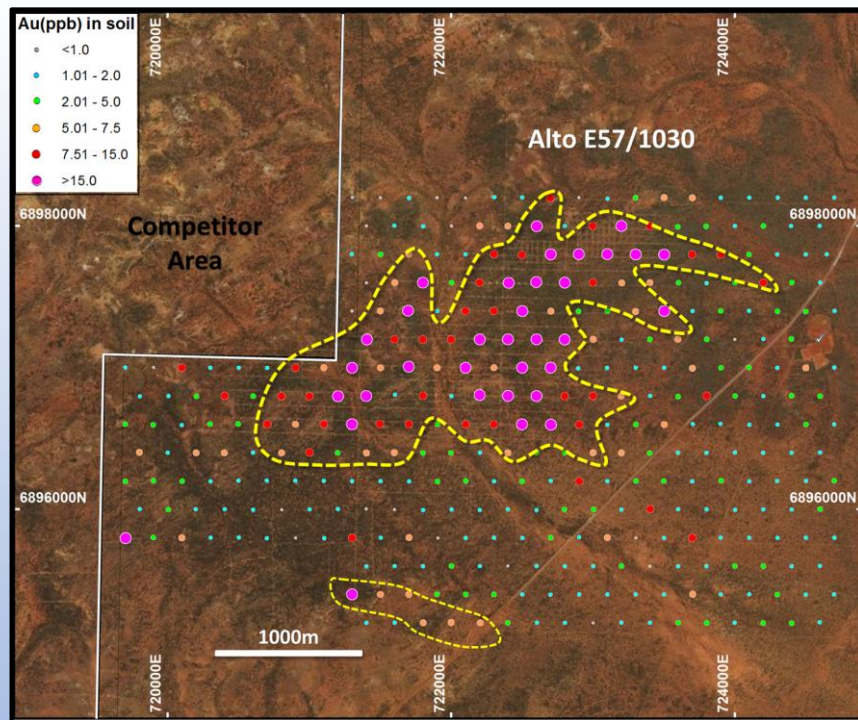


2018 Soil Results Integrated with Historical Work

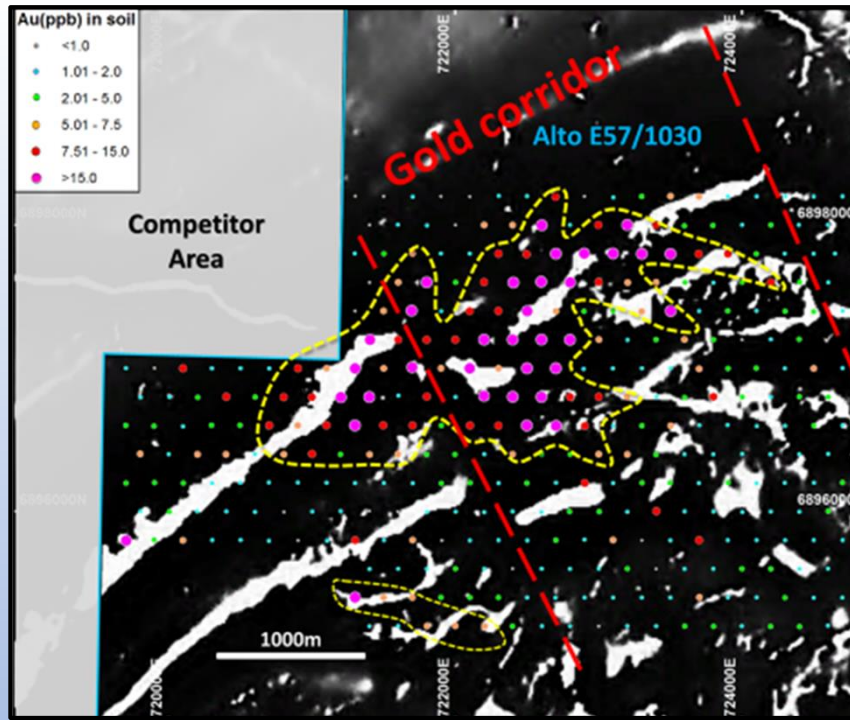
Gold in Soil Anomaly – target for drill testing

Valiant Anomaly

(Alto data)



Soil Au Assays over Google Image

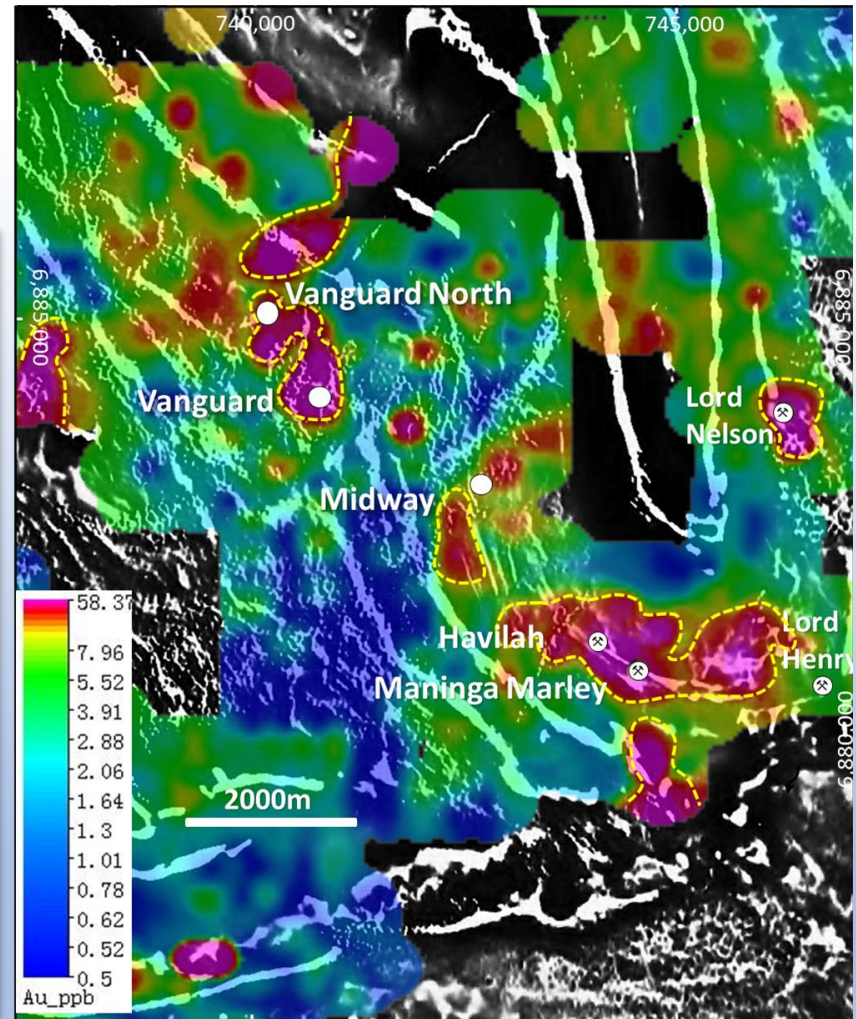
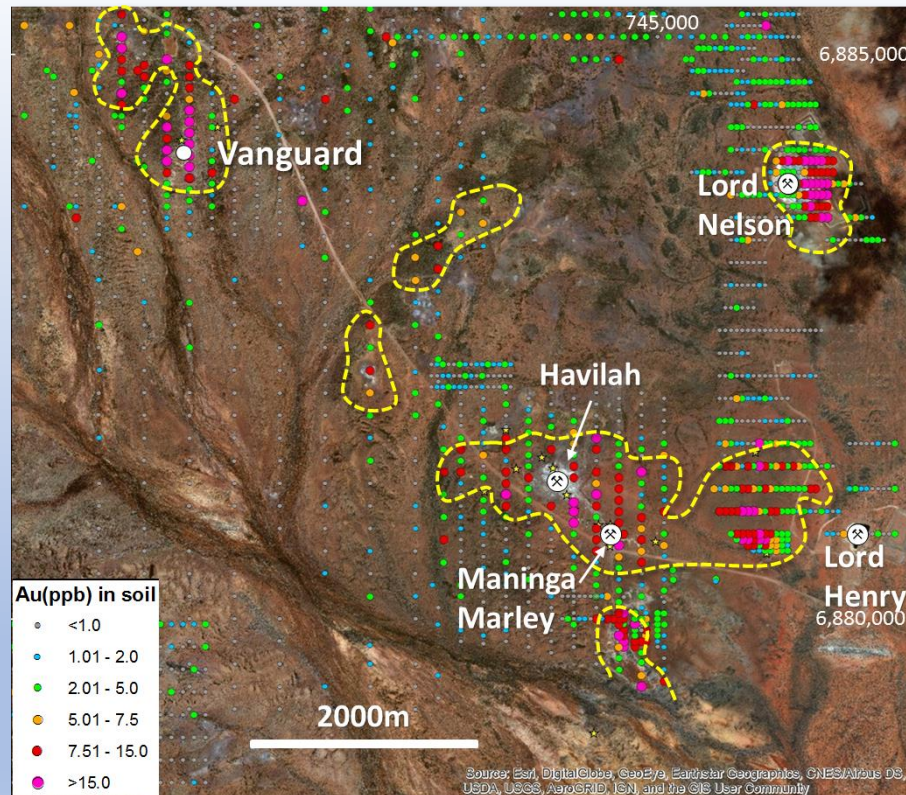


Soil Au Assays over 1st VD Magnetics

Gold in Soil Anomalies – targets for drill testing

Vanguard to Lord Nelson

(Lord Nelson soil sampled pre-mining)



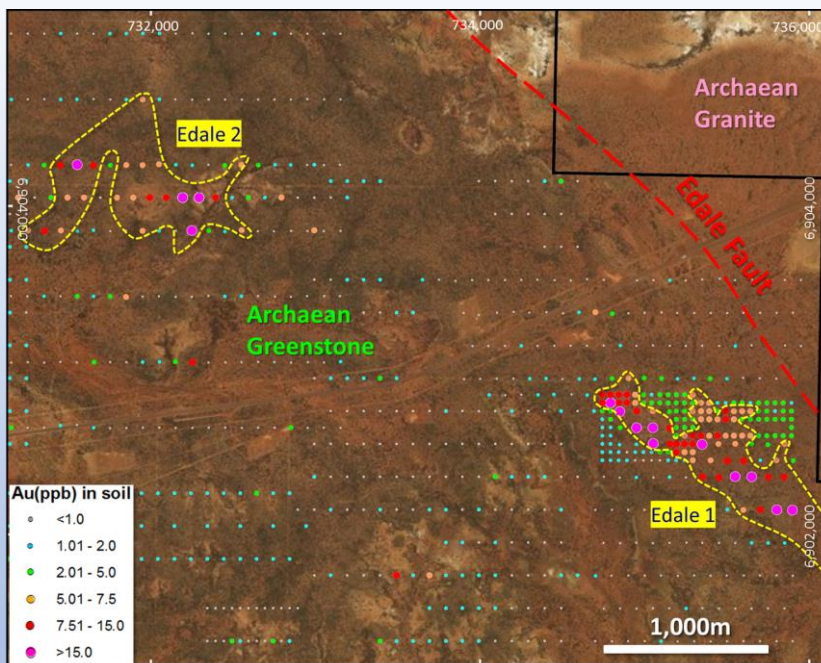
Soil Au Assays over Google Earth Image

Soil Au Image over 1st VD Magnetics

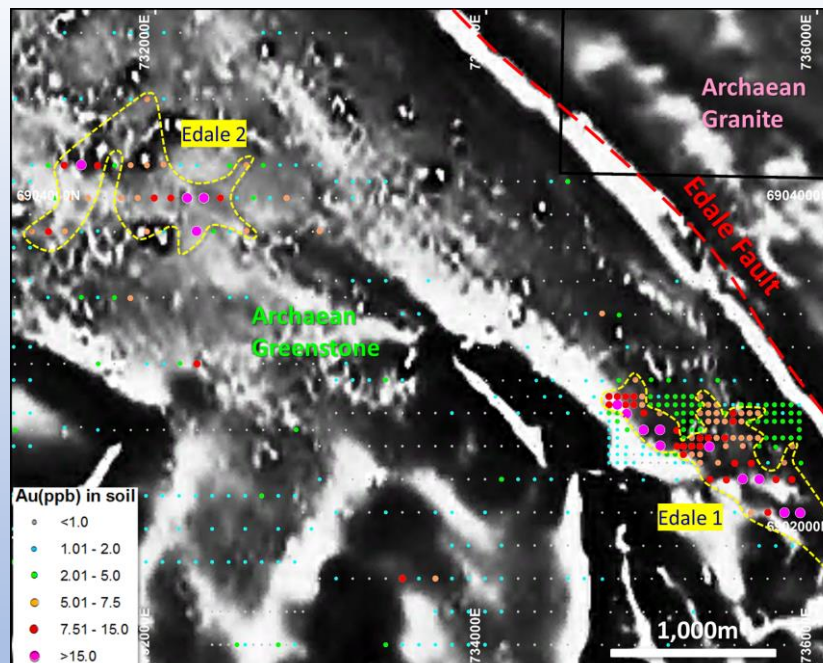
Gold in Soil Anomaly – target for drill testing

Edale Anomalies

(Combination of Alto and historical data)



Soil Au Assays over Google Earth Image



Soil Au Assays over 1st VD Magnetics

EVALUATION

- Extension and infill RC drilling at Indomitable and Vanguard Camps to respectively increase resources and for resource definition
- Update to the Company's JORC (2012) Mineral Resource inventory following completion of resource estimates by Carras Mining Pty Ltd
- Scoping study for mining project to fund ongoing exploration (inc. geotechnical and metallurgical studies, DC & infill RC drilling)

EXPLORATION

- Geological reconnaissance and focused soil sampling, followed by AC/RC drilling at a number of gold-in-soil anomalies
- AC drilling at Vanguard to define the extent of the newly discovered mineralised structures
- AC drilling at other areas such as Vanguard and Indomitable where the recent AC program has identified new mineralisation

Investment Case



Alto's back to basics exploration approach in rebuilding the geology from the ground up is beginning to result in discoveries in the 35km x 35km Sandstone goldfield (mostly wholly owned by Alto):

- **Vanguard - new discovery and growing** - Resource Estimate in progress for scoping study
- **Indomitable - re-interpretation of mineralisation controls** - Resource Estimate for scoping study
- **Soil sampling** - numerous anomalous areas typically >50ppb Au identified, some of which appear to be ~1km x 1km or 3km x 3km, and has also highlighted areas of mined laterite Au, with no evidence of deeper drilling
- **Hancocks - Bull Oak - Emerging gold camp**
- **Stingray** - undrilled ~2km diameter area with extensive prospecting evidence and alluvial Au on margins, and extensive “*de-magged*” BIF outcrop
- **Oroya** – historical unmined Au intercepts below and west of the open pit:
Eg. 4m @ 12.3g/t Au, 7m @ 6.8g/t Au & 12m @ 3.4g/t Au

Sandstone Mineral Resources JORC (2012)				
Prospect	Category	Kt	Grade	KOz
Lord Nelson	Inferred	983	2.2	68
Lord Henry	Indicated	1,238	1.6	65
	Inferred	110	1.3	4
Lord Henry Total		1,348	1.6	69
TOTAL (JORC 2012)		2,331	1.8	137

JORC (2012) Resource Estimation in Progress at:

- Indomitable
- Tiger Moth
- Vanguard
- Piper

Appendix Sandstone Town

Communication & Infrastructure

- Shire population ~200
- 600kms north of Perth
- Pastoral region, sheep, cattle
- Gravel daytime airstrip
- Mobile phone coverage
- Grid power, potable water

