

31 July 2023**June 2023 Quarterly Activities Report**

Shares on issue 749,470,932

Options on Issue at 30/06/2023:

12,000,000 @ 3 cents Ex:30/11/23
15,309,431 @ 2.5 cents Ex:10/03/24
9,067,259 @ 2.5 cents Ex :31/03/24
26,050,000 @ 1.5 cents Ex: 30/11/24
20,000,000 @0.75 cents Ex: 30/06/25

CONTACT DETAILS

Suite 4, Level 1, 7 Ventnor Ave,
PO Box 1014
WEST PERTH 6872
Western Australia
Ph: +61 8 6381 0392

DIRECTORS

Graeme Smith
Non-Executive Chairman

Non-Executive Directors

Dermot Ryan
Dr Changshun Jia
Graeme Smith

Graeme Smith
Company Secretary
Daniella Scaffidi
Chief Financial Officer

PROJECTS

DOOLGUNNA
Gold, Copper-Lead-Zinc

BULLFINCH NORTH
Lithium, Gold, Nickel-Copper

MURCHISON
Gold, Zinc-Copper

MANDILLA
Gold, Lithium

FRASER RANGE
Nickel-Copper, Gold
Constellation Resources JV

PERENJORI
Potash

Doolgunna Project, WA: Gold - Copper 372km²

During the Quarter field work commenced with a focus on the Vulcan gold prospect. A Program of Work (PoW) for RC drilling has been lodged with Department of Mines, Industry Regulation and Safety. The specific location and timing of the RC drilling will depend upon completion of a heritage survey by the Native Title holder.

Bullfinch North Project, WA: Lithium - Gold – Nickel 264km²

A further 60 soil samples were collected and assayed during the Quarter. In particular, the Li results on the eastern margin of the prospect have extended the Radio Lithium prospect southwards. A PoW for a 152 hole Toyota mounted auger sampling (to blade refusal) has been lodged with the DMIRS to test the anomalous +60ppm lithium zones to obtain “*bottom hole*” chip samples. No clearing of vegetation or soil is required to auger test these anomalies.

Murchison Project, WA: Zinc - Copper – Gold 212km²

The recent Moving Loop Electromagnetic (MLEM) survey has identified several strong conductors at AM14 and Eastmet VHMS prospects. A large and highly conductive feature at AM14 is situated down plunge of historic drill holes which intersected massive sulphide zinc, copper and gold mineralisation. Follow up MLEM, drilling and downhole EM are being planned to properly characterise and test these anomalies.

Mandilla Project, WA: Gold – Lithium 9.6km²

Previous explorers at Mandilla interpreted areas of weathered pegmatite on the northern boundary of current E15/1437. Historic auger drilling in the area was gold focused, and no Li₂O, Cs₂O and Ta₂O (L-C-T) analyses were reported. Enterprise has lodged a PoW to test the pegmatite interpretation.

Fraser Range Project, WA: Nickel – Copper 338km²

Elevated nickel and copper soil sample results (UltraFine+™) have been reported by Enterprise’s joint venture partner Constellation Resources Ltd (ASX: CR1) in the southern portion of the Transline tenements. Constellation is planning an infill soil sampling program.

Enterprise Corporate

Cash and cash equivalents at end of Quarter: \$0.317M.

On 10 July 2023 Mr William Robertson resigned as a Non-Executive Director of the Company and was replaced by Mr Graeme Smith on an interim basis.

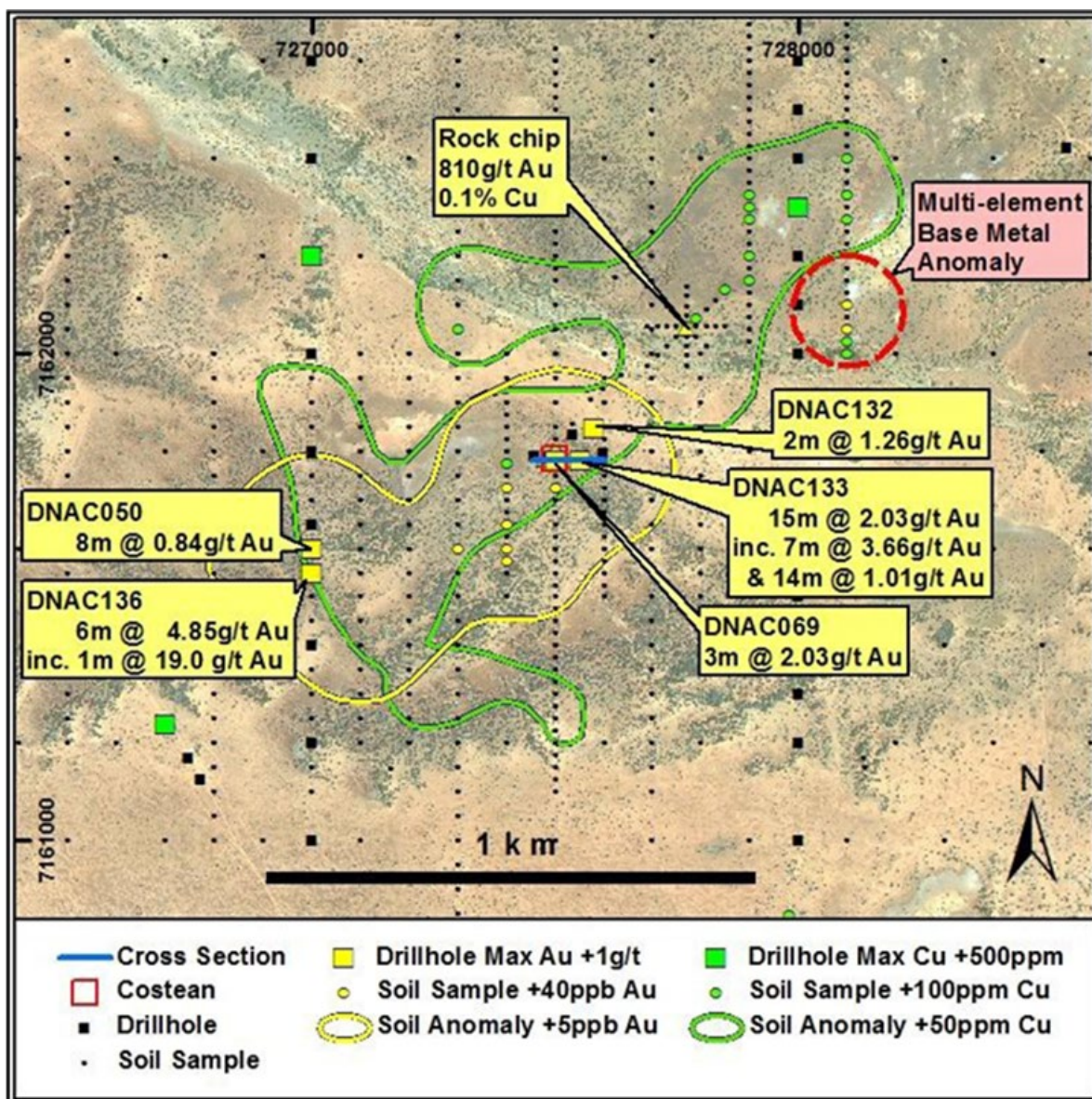
DOOLGUNNA – GOLD – COPPER PROJECT 100% Owned

Sandfire Resources Ltd (ASX: SFR) (“Sandfire”) entered into a Earn-in Agreement with Enterprise Metals Ltd in October 2016 to earn up to a 75% interest in Enterprise’s Doolgunna Project. Sandfire’s exploration focus was copper within the Karalundi Formation, which was the geological host to their DeGrussa and Monty copper deposits. Late in 2022 Sandfire withdrew from the Earn-In JV with no earned interest.

Enterprise’s current landholdings cover ~372km² and include ~50km of strike along the Doolgunna Formation and a significant part of the Johnson Cairn Formation.

Post the withdrawal by Sandfire, Enterprise has been reviewing gold exploration opportunities in its large landholdings which have not yet been fully tested. The Vulcan gold prospect is the first prospect to be tested, and a Program of Work (PoW) for RC drilling has been lodged with Department of Mines, Industry Regulation and Safety. The specific location and timing of the RC drilling will depend upon completion of a heritage survey by the Native Title holder.

Figure 1. Location of Doolgunna Vulcan Gold Prospect showing Soil and Aircore Drill Results



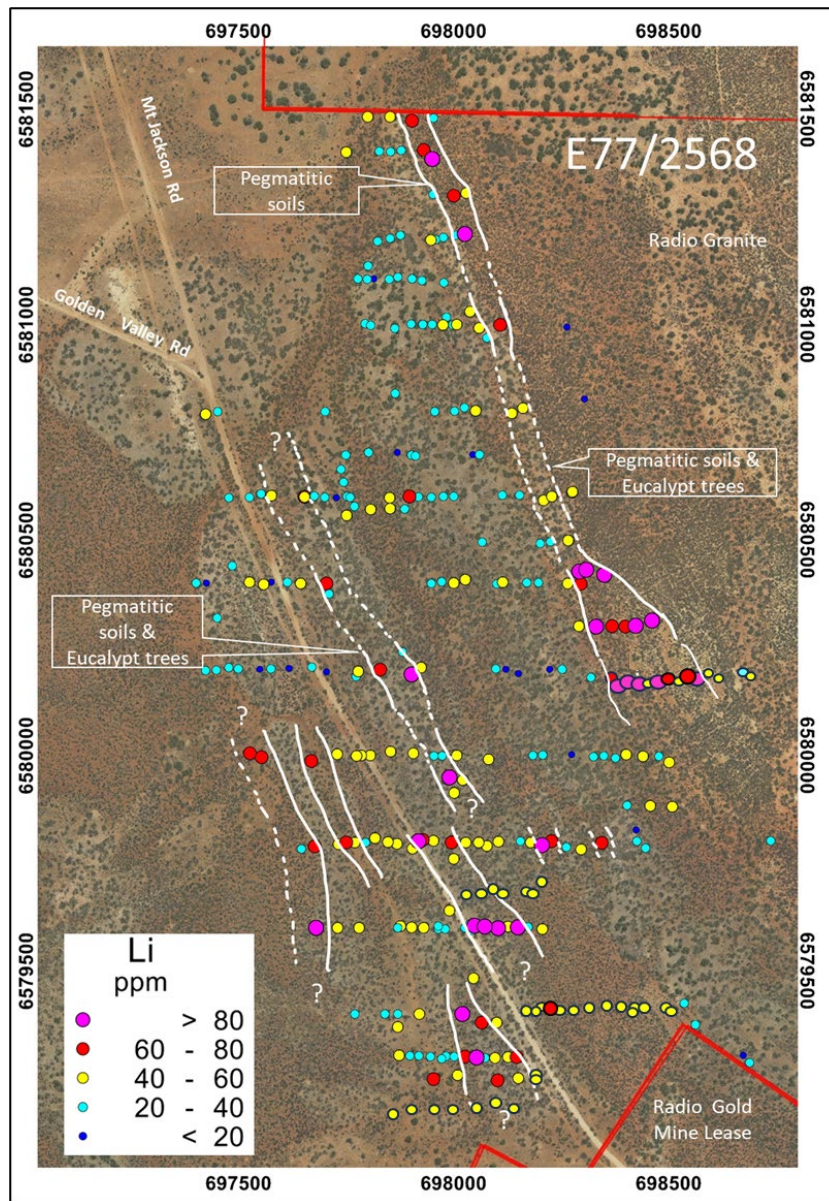
BULLFINCH NORTH Li-Au-Ni-Cu PROJECT - Under Option Agreement

The Bullfinch area occupies the northern continuation of the Southern Cross Greenstone Belt (SCGB) and has historically been explored for gold and nickel. However the recent discovery of a number of important lithium deposits, and especially the Earl Grey Deposit, highlights the growing prominence of pegmatite hosted L-C-T deposits within the belt.

Prior to the June Quarter, Enterprise had collected 304 soil samples from the Radio Prospect and during the June Quarter, a further 60 soil samples were collected and assayed. In particular, anomalous Li results on the eastern margin of the prospect have extended the Radio Lithium prospect southwards. In the course of undertaking soil sampling programs, Enterprise’s geological team has located a number of scattered pegmatite subcrops which add confidence to the developing geological interpretation.

The Company has lodged a PoW with the DMIRS for a 152 hole auger sampling program using a Toyota mounted auger to recover pegmatite rock chips for analysis and petrology. This sampling program is subject to approval from the Marlinyu Ghoorlie Native Title Claimant. Figure 2 shows the current interpreted pegmatite zones and Li values in ppm at the Radio Prospect.

Figure 2. Image Showing Radio Prosect Soil Sample Locations with Li ppm Assay Values

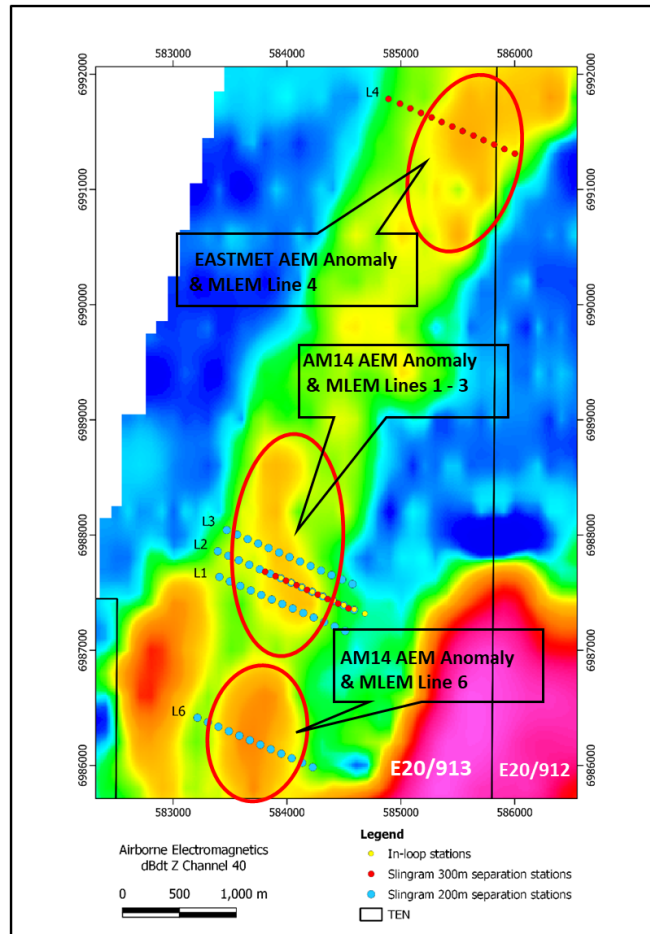


MURCHISON Zn-Cu PROJECT 100% Owned

On 15 June 2023 Enterprise reported that six lines of high-powered ground based MLEM were completed over Enterprise’s helicopter borne Time Domain Electromagnetic (TEM) anomalies which are associated with historic massive sulphide Zn/Cu prospects.

Consultants Terra Resources Pty Ltd subsequently processed the MLEM data and the results were reported to the market on 14 July 2023. Follow up drilling, downhole EM and MLEM surveys are being planned to properly characterise and test these anomalies. *Refer Figures 3 and 4.*

Figure 3. Priority Target areas on TEM Conductivity Depth Image at 257RL, over 1VD Magnetic Image



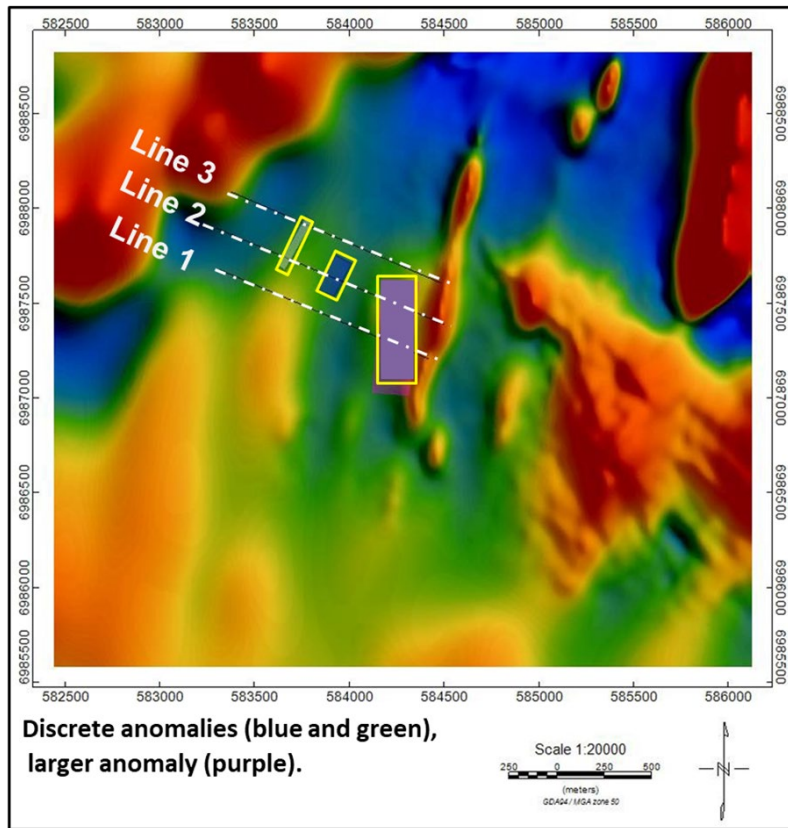
The results of Terra Resource’s processing and interpretation are reported below and over leaf:

Processing of MLEM Data on AM14 Prospect

- A large and highly conductive feature (7350 Sm, purple in Figure 5) was identified in MLEM Lines 1 and 2, below historical 1970’s drilling which intersected high grade Zn-Cu massive sulphide mineralisation..
- Base metal mineralisation in historical RC and DC holes was intersected up dip of the conductor and the conductor has not been tested down plunge from the Zn-Cu mineralisation.
- No drilling has intersected the two smaller blue and green) discrete anomalies.

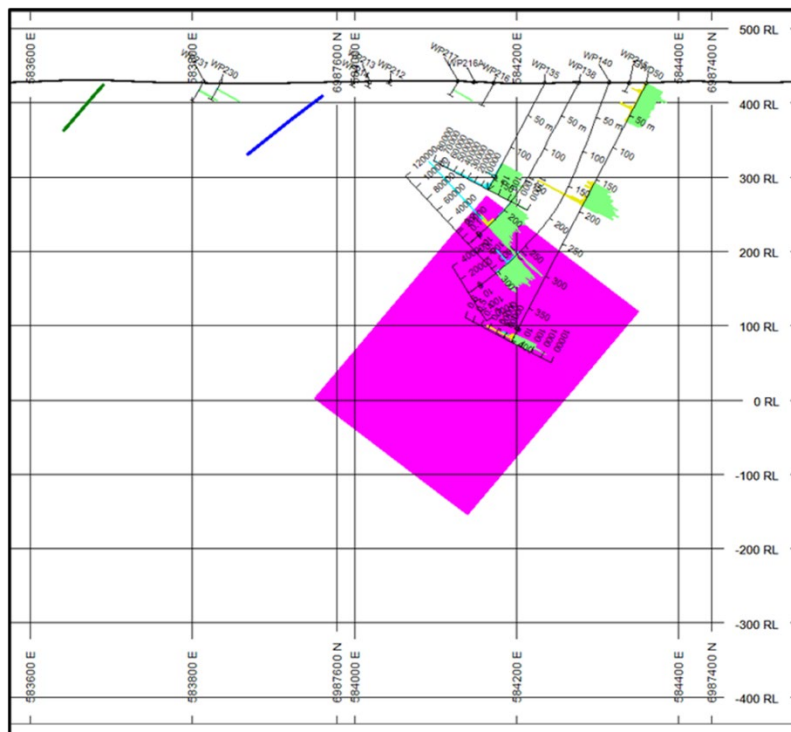
Refer Figure 5, plan view of MLEM Lines 1-3 with modelled EM plates

Figure 4. Plan View Lines 1-3, Modelled EM plates over Reduced to Pole Magnetic Image.



Refer Figure 5 for Cross Section (MLEM Line 2) with historical drilling and modelled MLEM plates.

Figure 5. Cross Section (MLEM Line 2) with Historical Drilling and Modelled EM plates(green, blue, purple)



A summary of historic drill holes on MLEM Lines 1 and 2 are shown in Table 1.

Table 1. Historic Drill Hole Intersections on MLEM Line 2 (~987400mN) and Line 1 (~6987200mN)

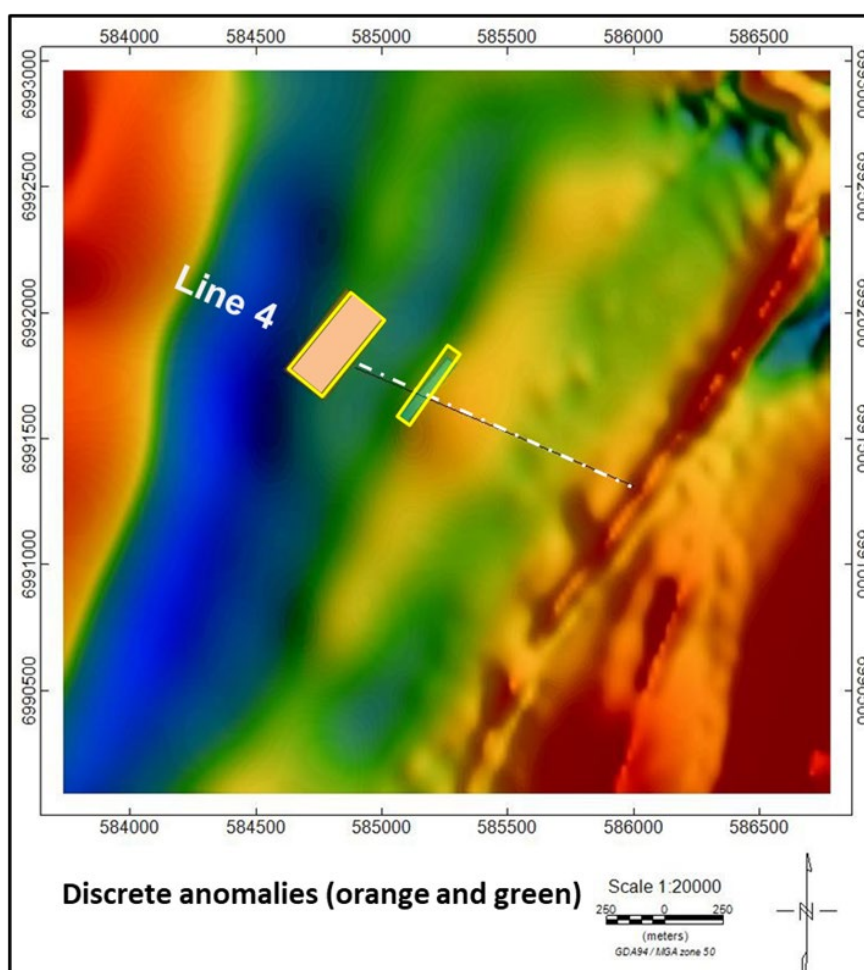
Hole ID	Collar East MGA 50	Collar North MGA 50	RL (m)	Max Depth (m)	From - To (m)	Int (m)	Cu (ppm)	Pb (ppm)	Zn (%)
WP106*	584082	6986957	423	130	116 -119	3	486	441	0.62%
WP108	584120	6987408	431	80	60 - 80	20	880	440	0.63%
WP135*	584201	6987412	428	205.5	164 -167	3	6,976	2,505	4.68%
WP138*	584253	6987418	450	257	228 - 231	3	4,200	5,300	7.50%
WP139*	584227	6987263	428	250	205 - 210	5	600	300	0.44%
WP141*	584225	6987032	417	323.5	307.5 - 308.6	1.1	3,600	6,000	7.07%
GWD50*	584354	6987421	431	402.9	395.26 - 396.61	1.35	2,000	800	1.79%
GWD51*	584304	6987217	431	385.6	178 - 182	4	1,845	400	1.00%
GWD51*	584304	6987217	431	385.6	321.25 - 321.6	0.35	500	412	1.04%

* with diamond core tail.

Processing of MLEM Data on Eastmet Prospect

- Line 4 contains 2 discrete conductors (5000 Sm and 4500 Sm).
- No historic drilling was recorded in close proximity to the modelled plates.
- The green conductor is coincident and parallel with the flank of a magnetic anomaly.
- The orange conductor is also coincident with a region of increased magnetic amplitude.

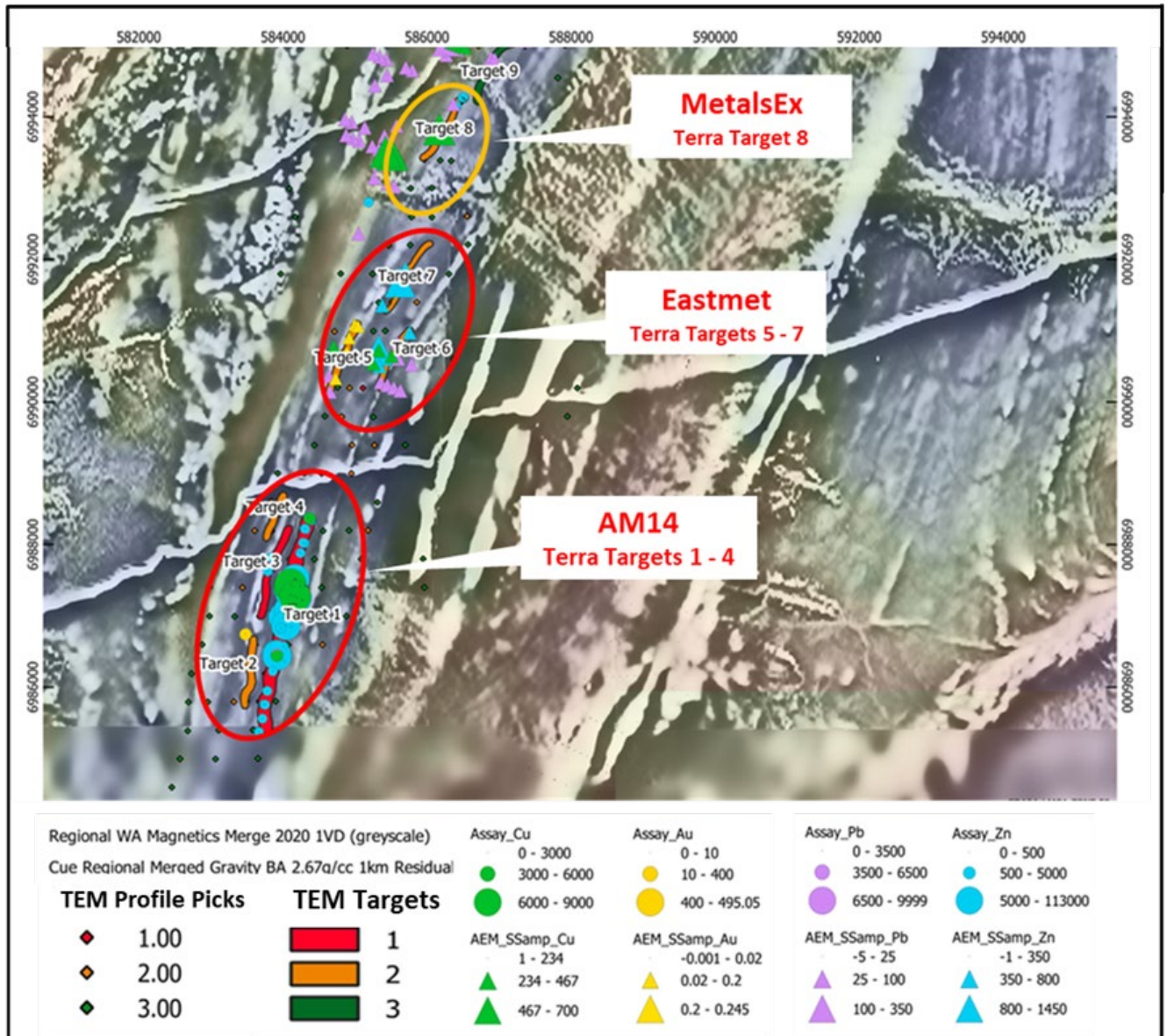
Figure 6. Plan View Line 4, Modelled EM plates over reduced to pole Magnetic Image.



Murchison Background

In early 2023 geophysical consultants Terra Resources Pty Ltd integrated the airborne EM data with Enterprise’s detailed ground gravity and airborne magnetic data, and historic surface and drill hole geochemistry, and identified a number of targets for follow up.

Figure 7. Location of AM14, Eastmet - MetalsEx EM Targets with Max. Geochem over Grey Scale Magnetics and Colour Gravity



Mapping by Esso Exploration and Production Australia Inc. (Esso) and Eastmet Minerals Ltd (Eastmet) in the early 1970’s discovered a number of gossan outcrops rich in zinc and copper near Wattagee Well, 30km north of Cue in WA. These prospects were explored with rockchip and soil sampling, an INPUT survey, Induced Polarisation (IP) surveys and ultimately shallow angled percussion holes and deeper diamond drill holes.

MANDILLA Au-Li PROJECT 100% Owned

In March 2023 Enterprise drilled six reverse circulation (RC) holes at the Mandilla Prospect just north of Widgiemooltha. Five of these RC holes were drilled to follow up anomalous lithium results in 4 RC holes reported to the ASX on 26 October 2022, with one additional RC hole (156m) drilled to follow up a previous gold intersection north of the Mandilla homestead.

The five RC holes anomalous lithium values were located on the southern boundary of E15/1437. The anomalous Li_2O , Cs_2O and Ta_2O analyses on the single east-west section drilled to date have confirmed that classic L-C-T pegmatites are present on the eastern margin of the Mandilla Syenite, also known as the “*Emu Rocks Granite*”.

The Mandilla Prospect lies on the eastern margin of the Mandilla Syenite. The syenite is a granite type body which intrudes volcanoclastic sedimentary rocks in the area which form part of the Spargoville Group.

Enterprise’s primary exploration target at Mandilla is gold mineralisation similar to Astral Resources NL’s 1 Moz gold resource on the western margin of the Mandilla Syenite. Enterprise believes that the eastern margin of the syenite on E15/1437 is equally prospective for gold, but the regolith is deeper.

To date Enterprise has completed 121 aircore (AC) holes and 28 reverse circulation (RC) holes on the property, but the drilling grid is still very sparse.

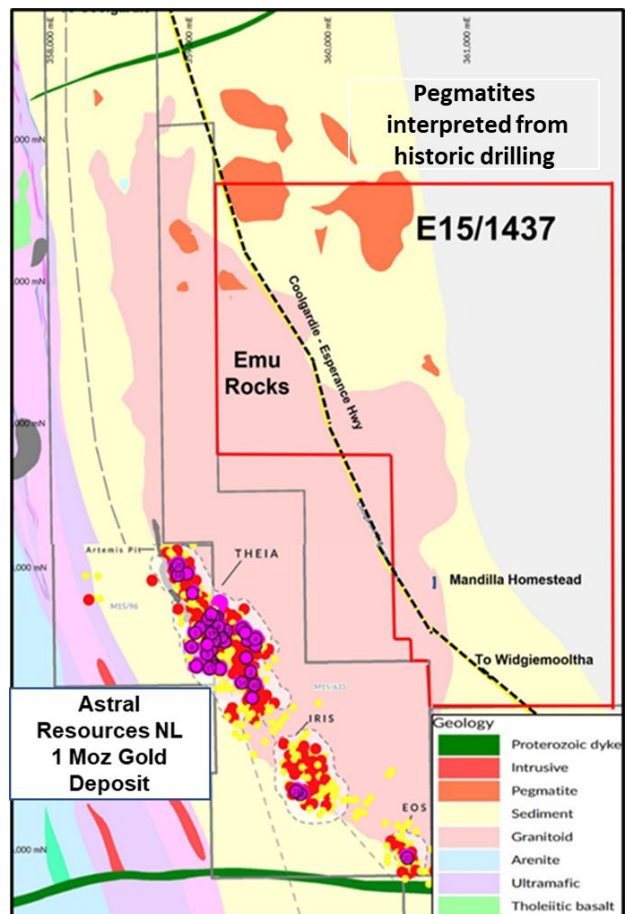
Figure 9 shows the location of E15/1437 and Figure 10 shows the location of Astral Resources NL’s 1 million ounce gold deposit on the western flank of the Mandilla Syenite.

Note that Figure 9 is sourced from Astral Resources NL website and infers the presence of pegmatites on the northern boundary of E15/1437, which Enterprise understands has not been drill tested for lithium.

Figure 8. Location of E15/1437



Figure 9. Geological Interpretation E15/1437



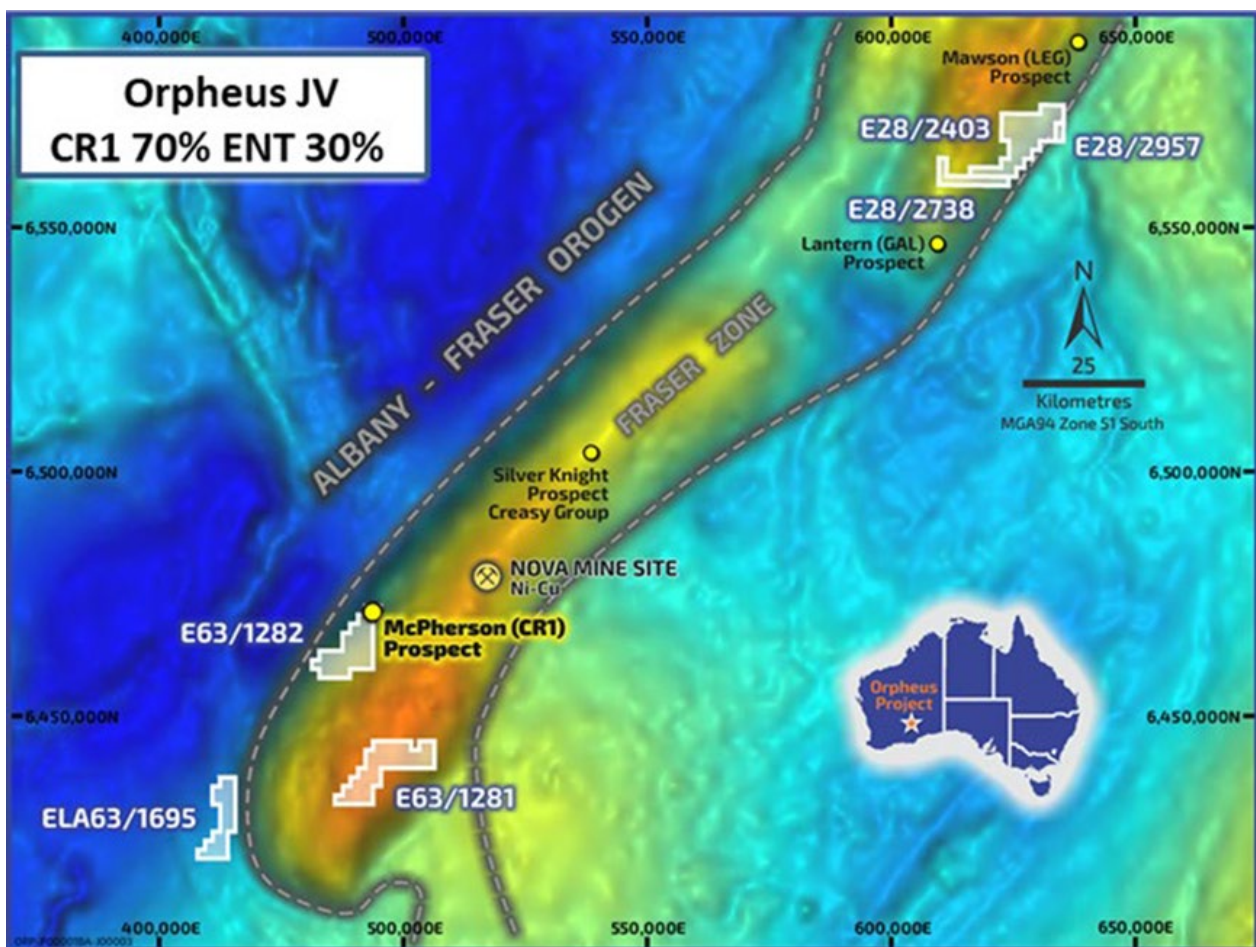
FRASER RANGE Ni-Cu PROJECT - ENT 30% Free-carried to BFS

The Fraser Range Project is located within the Albany-Fraser Orogen approximately 100km east of Norseman in WA and covers approximately 338km² of granted tenements in a prospective portion of the Fraser Range.

Enterprise holds a 30% free carried interest to completion of a bankable feasibility stage (BFS) of a discovery. Constellation Resources Ltd (“Constellation” ASX: CR1) holds a 70% interest and fully funds and manages all exploration on the four Orpheus Joint Venture tenements.

Refer Figure 10 for the location of the Orpheus Joint Venture tenements. Note: Minor tenements E28/2738 & E28/2957 are 100% CR1.

Figure 10. Location Plan, Orpheus Project Tenements E28/2403, E63/1281 & 1282 & ELA 63/1695.



Enterprise’s joint venture partner Constellation Resources Ltd (ASX: CR1) has announced elevated nickel and copper soil sample results (UltraFine+™) in the southern portion of the Transline tenements. (CR1: ASX 27 Jul 2023)

Constellation has reported that it is planning an infill soil sampling program over the anomalous area on a 400m x 200m grid to enable a greater understanding of the morphology, continuity and amplitude of these newly identified anomalous trends. The aim to test the prospective basement units with aircore (“AC”) drilling once all infill soils are processed and interpreted. Refer Figures 11 and 12.

Figure 11. Ultrafine Soil Sampling Results over Transline Tenements with Anomalous Nickel (Ni) Gridded Base Image and Previously Identified Geophysical Targets

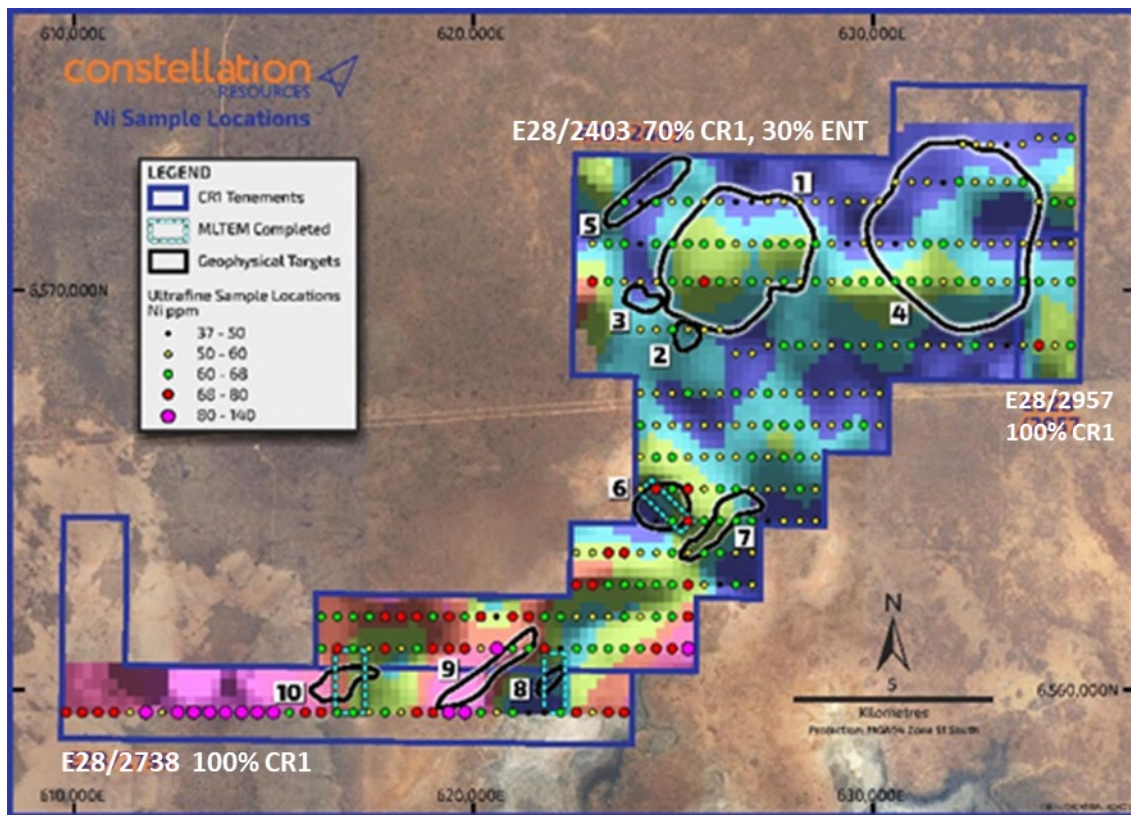
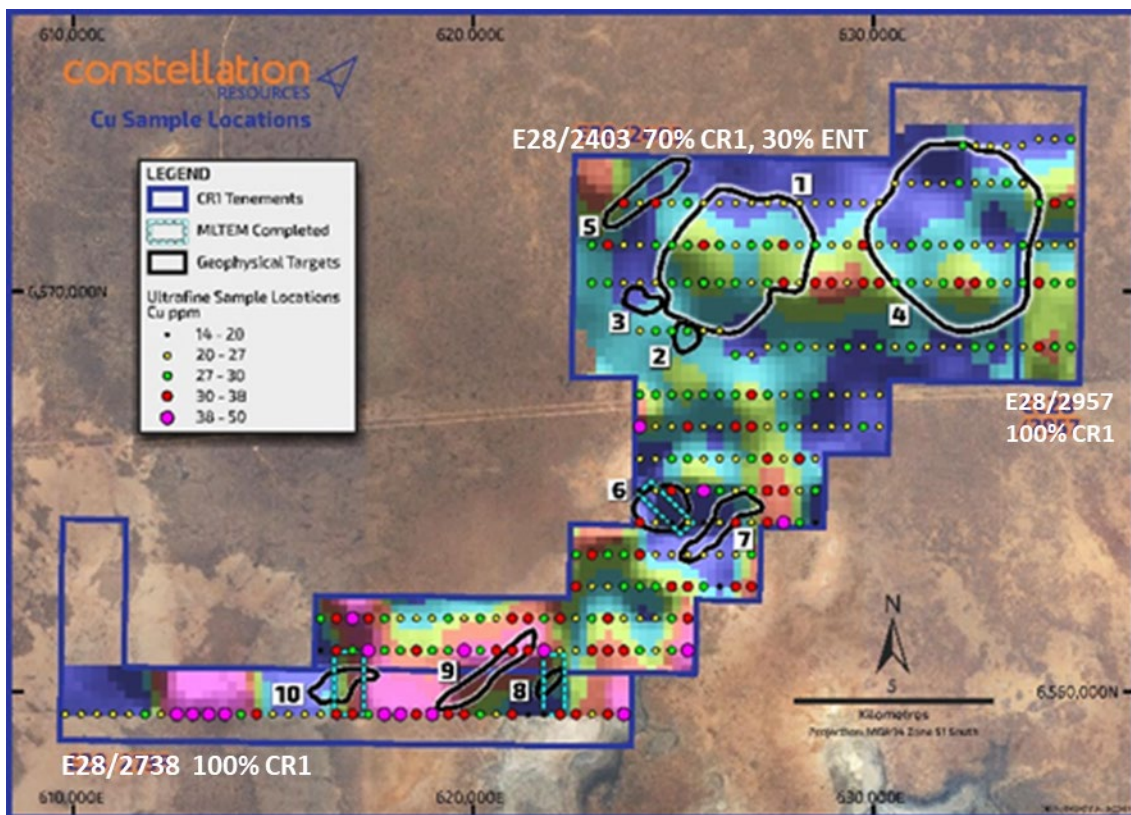


Figure 12. Ultrafine Soil Sampling Results over Transline Tenements with Anomalous Nickel (Ni) Gridded Base Image and Previously Identified Geophysical Targets



NEW OPPORTUNITIES ASSESSMENT

A key part of Enterprise's business strategy is to continue to seek out first class exploration opportunities that have the potential to add significantly to shareholder value. Under this strategy, the Company has continued to assess a number of gold, lithium and copper exploration opportunities in Western Australia during the Quarter.

CORPORATE

On 10 July 2023 Mr William Robertson resigned from the position of interim Chairman and Non-Executive Director of the Company. and was replaced by Mr Graeme Smith on an interim basis.

Details of mining exploration activities

Details of exploration activities during the Quarter are set out above.

Expenditure incurred on exploration activities during the quarter was approximately \$420,000.

The Company's exploration and evaluation expenditure for the Quarter related predominantly to geological consulting, field work including soil sampling and analyses, geophysical surveys and interpretation, and tenement administration and maintenance.

Details of mining production and development activities

There were no expenses incurred in relation to mining or production activities during the Quarter ended 30 June 2023.

Related Party Payments

During the Quarter ended 30 June 2023, the Company made payments of \$67,000 to related parties and their associates. These payments relate to existing remuneration arrangements (director fees and consulting fees).

This ASX Announcement has been approved in accordance with the Company's published continuous disclosure policy and authorised for release by Dermot Ryan - Director.

Further information, contact:

Mr Graeme Smith– Chairman Ph: +61 8 6381 0392 admin@enterprisemetals.com.au

Competent Person Statements

The information in this report that relates to Enterprise's Doolgunna, Bullfinch North, Murchison and Mandilla Projects was compiled by Mr Dermot Ryan, who is an employee of Montana Exploration Pty Ltd and a Director and security holder of the Company.

Mr Ryan is a Fellow of the Australasian Institute of Mining and Metallurgy and a Member of the Australian Institute of Geoscientists and has sufficient experience of relevance to the styles of mineralisation and the types of deposits under consideration, and to the activities undertaken, to qualify as a Competent Person as defined in the 2012 Edition of the Joint Ore Reserves Committee (JORC) Australasian Code for Reporting of Exploration Results, Mineral Resources and Ore Reserves. Mr Ryan consents to the inclusion in this report of the matters based on information in the form and context in which it appears. Enterprise Metals Ltd understands that this information has not been materially changed since it was last reported.

Exploration Results

The references in this announcement to Exploration Results were reported in accordance with Listing Rule 5.7 in the announcements titled:

16 May 2023	Vulcan Gold Prospect – Doolgunna Exploration Update
31 Jan 2023	Lithium Soils hit 200ppm Li ₂ O at Radio Pegmatites Bullfinch
31 Jan 2023	Thirteen Late Time AEM Zn-Cu Targets Identified at Murchison Project.
26 Apr2023	Murchison Project Exploration Update
15 Jun 2023	MLEM Surveys Completed at Murchison Zn/Cu Project
14 Jul 2023	Potential Extension of VHMS Mineralisation at AM14 Cu/Zn Project, Murchison WA
29 Mar 2023	Mandilla Lithium-Gold Project WA, RC Drilling Update
27 Jul 2023	Transline Ultrafine Soil Sampling Survey Results - Constellation Resources Ltd (CR1:ASX)

These announcements are available for viewing on the Company's website at:

www.enterprisemetals.com.au Enterprise confirms that it is not aware of any new information or data that materially affects the information included in any original ASX announcement.

Forward-Looking Statements

Statements regarding plans with respect to Enterprise's joint ventured and wholly owned projects are forward- looking statements. There can be no assurance that plans for exploration and development of these projects will proceed as currently expected. These forward-looking statements are based on the Company's expectations and beliefs concerning future events. Forward looking statements are necessarily subject to risks, uncertainties and other factors, many of which are outside the control of the Company, which could cause actual results to differ materially from such statements. The Company makes no undertaking to subsequently update or revise the forward-looking statements made in this announcement, to reflect the circumstances or events after the date of that announcement.

Tenement Information as Required by Listing Rule 5.3

Enterprise Metals Ltd & its 100% Owned Subsidiaries & Its Managed Tenements on a Consolidated Basis at 30 June 2023

Doolgunna Project Managed Tenements

Project	Lease	ENT Interest	State	Status
Doolgunna	E51/1303	100%	WA	Granted
Doolgunna	E52/2049	100%	WA	Granted
Doolgunna	E52/3347	100%	WA	Granted
Doolgunna	E51/2021	100%	WA	Granted
Doolgunna	E51/1970	100%	WA	Granted
Doolgunna	E51/2096	100%	WA	Application

Murchison Project Managed Tenements

Project	Lease	ENT Interest	State	Status
Murchison	E20/912	100%	WA	Granted
Murchison	E20/913	100%	WA	Granted
Murchison	E20/944	100%	WA	Granted
Murchison	P20/2302	100%	WA	Granted
Murchison	P20/2303	100%	WA	Granted

Fraser Range Project ENT 30% Interest (CR1 Managed Orpheus Joint Venture Tenements)*

Project	Lease	ENT Interest	CR1 Interest	State	Status
Fraser Range	E63/1281	30%	70%	WA	Granted
Fraser Range	E63/1282	30%	70%	WA	Granted
Fraser Range	E63/1695	30%	70%	WA	Application
Fraser Range	E28/2403	30%	70%	WA	Granted

*ENT is the Registered Holder of a 30% interest, with Constellation Resources Ltd (CR1) managing and solely funding to completion of Bankable Feasibility Study.

Other Tenements & Applications

Project	Lease	ENT Interest	State	Status
Bullfinch North	E77/2652	100%	WA	Royalty to NXT1
Bullfinch North	E77/2544	Nil	WA	Option to purchase
Bullfinch North Option	E77/2568	Nil	WA	Option to purchase
Bullfinch North Option	E77/2325	Nil	WA	Option to purchase
Bullfinch North Option	P77/4350	Nil	WA	Option to purchase
Bullfinch North Option	P77/4566	Nil	WA	Option to purchase
Bullfinch North Option	P77/4586	Nil	WA	Option to purchase
Bullfinch North Option	P77/4587	Nil	WA	Option to purchase
Perenjori	E70/6038	100%	WA	Application
Perenjori	E59/2678	100%	WA	Granted

ENT Interest in Tenements Surrendered during the Quarter

Project	Lease	State
Doolgunna	E51/1683	WA
Doolgunna	E51/1301	WA
Doolgunna	E51/1359	WA
Murchison	E20/911	WA
Murchison	E20/914	WA
Murchison	E20/915	WA
Murchison	E20/918	WA

No other interests in mining tenements were acquired or disposed of during the Quarter.

Appendix 5B

Mining exploration entity or oil and gas exploration entity quarterly cash flow report

Name of entity

Enterprise Metals Ltd

ABN

43 123 567 073

Quarter ended ("current quarter")

30 June 2023

Consolidated statement of cash flows	Current quarter \$A'000	Year to date (12 months) \$A'000
1. Cash flows from operating activities		
1.1 Receipts from customers		
1.2 Payments for		
(a) exploration & evaluation	(175)	(579)
(b) development		
(c) production		
(d) staff costs	(21)	(154)
(e) administration and corporate costs	(45)	(172)
1.3 Dividends received (see note 3)		
1.4 Interest received	4	17
1.5 Interest and other costs of finance paid		
1.6 Income taxes paid		
1.7 Government grants and tax incentives		
1.8 Other (provide details if material)		
1.9 Net cash from / (used in) operating activities	(237)	(888)

2. Cash flows from investing activities		
2.1 Payments to acquire or for:		
(a) entities		
(b) tenements		
(c) property, plant and equipment		(3)
(d) exploration & evaluation	(245)	(459)
(e) investments		
(f) other non-current assets		

Mining exploration entity or oil and gas exploration entity quarterly cash flow report

Consolidated statement of cash flows		Current quarter \$A'000	Year to date (12 months) \$A'000
2.2	Proceeds from the disposal of:		
	(a) entities		
	(b) tenements		
	(c) property, plant and equipment		
	(d) investments		
	(e) other non-current assets		
2.3	Cash flows from loans to other entities		
2.4	Dividends received (see note 3)		
2.5	Other (Refunds)		
2.6	Net cash from / (used in) investing activities	(245)	(462)
3.	Cash flows from financing activities		
3.1	Proceeds from issues of equity securities (excluding convertible debt securities)	100	621
3.2	Proceeds from issue of convertible debt securities		
3.3	Proceeds from exercise of options		
3.4	Transaction costs related to issues of equity securities or convertible debt securities		(16)
3.5	Proceeds from borrowings		
3.6	Repayment of borrowings		
3.7	Transaction costs related to loans and borrowings		
3.8	Dividends paid		
3.9	Other (provide details if material)		
3.10	Net cash from / (used in) financing activities	100	605
4.	Net increase / (decrease) in cash and cash equivalents for the period		
4.1	Cash and cash equivalents at beginning of period	699	1,062
4.2	Net cash from / (used in) operating activities (item 1.9 above)	(237)	(888)
4.3	Net cash from / (used in) investing activities (item 2.6 above)	(245)	(462)
4.4	Net cash from / (used in) financing activities (item 3.10 above)	100	605

Mining exploration entity or oil and gas exploration entity quarterly cash flow report

Consolidated statement of cash flows		Current quarter \$A'000	Year to date (12 months) \$A'000
4.5	Effect of movement in exchange rates on cash held		
4.6	Cash and cash equivalents at end of period	317	317

5.	Reconciliation of cash and cash equivalents at the end of the quarter (as shown in the consolidated statement of cash flows) to the related items in the accounts	Current quarter \$A'000	Previous quarter \$A'000
5.1	Bank balances	317	699
5.2	Call deposits		
5.3	Bank overdrafts		
5.4	Other (provide details)		
5.5	Cash and cash equivalents at end of quarter (should equal item 4.6 above)	317	699

6.	Payments to related parties of the entity and their associates	Current quarter \$A'000
6.1	Aggregate amount of payments to related parties and their associates included in item 1 <i>Directors fees and consulting fees</i>	25
6.2	Aggregate amount of payments to related parties and their associates included in item 2 <i>Consulting fees</i>	42
<p><i>Note: if any amounts are shown in items 6.1 or 6.2, your quarterly activity report must include a description of, and an explanation for, such payments.</i></p>		

Mining exploration entity or oil and gas exploration entity quarterly cash flow report

7. Financing facilities	Total facility amount at quarter end \$A'000	Amount drawn at quarter end \$A'000
<i>Note: the term "facility" includes all forms of financing arrangements available to the entity. Add notes as necessary for an understanding of the sources of finance available to the entity.</i>		
7.1	Loan facilities	
7.2	Credit standby arrangements	
7.3	Other (please specify)	
7.4	Total financing facilities	
7.5	Unused financing facilities available at quarter end	
7.6	Include in the box below a description of each facility above, including the lender, interest rate, maturity date and whether it is secured or unsecured. If any additional financing facilities have been entered into or are proposed to be entered into after quarter end, include a note providing details of those facilities as well.	

8. Estimated cash available for future operating activities	\$A'000
8.1	(237)
8.2	(245)
8.3	(482)
8.4	317
8.5	317
8.6	317
8.7	0.7
<i>Note: if the entity has reported positive relevant outgoings (ie a net cash inflow) in item 8.3, answer item 8.7 as "N/A". Otherwise, a figure for the estimated quarters of funding available must be included in item 8.7.</i>	
8.8	If item 8.7 is less than 2 quarters, please provide answers to the following questions:
8.8.1	Does the entity expect that it will continue to have the current level of net operating cash flows for the time being and, if not, why not?
Answer: No, operating cash flows are high in the quarter due to drilling at Mandilla. Drilling is a discretionary activity subject to the availability of funds.	
8.8.2	Has the entity taken any steps, or does it propose to take any steps, to raise further cash to fund its operations and, if so, what are those steps and how likely does it believe that they will be successful?
Answer: Yes, the Company is currently in discussions with various parties with regards to funding which they have a fair degree of certainty will be achieved.	
8.8.3	Does the entity expect to be able to continue its operations and to meet its business objectives and, if so, on what basis?
Answer: Yes, the Company manages its activities consistent with its cash reserves.	
<i>Note: where item 8.7 is less than 2 quarters, all of questions 8.8.1, 8.8.2 and 8.8.3 above must be answered.</i>	

Compliance statement

- 1 This statement has been prepared in accordance with accounting standards and policies which comply with Listing Rule 19.11A.
- 2 This statement gives a true and fair view of the matters disclosed.

31 July 2023

Date:

The Board

Authorised by:
(Name of body or officer authorising release – see note 4)

Notes

1. This quarterly cash flow report and the accompanying activity report provide a basis for informing the market about the entity's activities for the past quarter, how they have been financed and the effect this has had on its cash position. An entity that wishes to disclose additional information over and above the minimum required under the Listing Rules is encouraged to do so.
2. If this quarterly cash flow report has been prepared in accordance with Australian Accounting Standards, the definitions in, and provisions of, *AASB 6: Exploration for and Evaluation of Mineral Resources* and *AASB 107: Statement of Cash Flows* apply to this report. If this quarterly cash flow report has been prepared in accordance with other accounting standards agreed by ASX pursuant to Listing Rule 19.11A, the corresponding equivalent standards apply to this report.
3. Dividends received may be classified either as cash flows from operating activities or cash flows from investing activities, depending on the accounting policy of the entity.
4. If this report has been authorised for release to the market by your board of directors, you can insert here: "By the board". If it has been authorised for release to the market by a committee of your board of directors, you can insert here: "By the [name of board committee – eg Audit and Risk Committee]". If it has been authorised for release to the market by a disclosure committee, you can insert here: "By the Disclosure Committee".
5. If this report has been authorised for release to the market by your board of directors and you wish to hold yourself out as complying with recommendation 4.2 of the ASX Corporate Governance Council's *Corporate Governance Principles and Recommendations*, the board should have received a declaration from its CEO and CFO that, in their opinion, the financial records of the entity have been properly maintained, that this report complies with the appropriate accounting standards and gives a true and fair view of the cash flows of the entity, and that their opinion has been formed on the basis of a sound system of risk management and internal control which is operating effectively.