



ENTERPRISE METALS LTD

ACN: 123 567 073

Presentation
to
Investors

15 June 2009

Disclaimer

This document has been prepared by Enterprise Metals Ltd (“Enterprise” or “the Company”) to provide an update of the Company to investors and potential new shareholders. This presentation should be read in conjunction with other public announcements and reports (including financial reports and disclosure documents) released by Enterprise. Any statements, opinions, projections, forecasts or other material contained in this document do not constitute any commitments, representations or warranties by Enterprise and associated entities or its directors, agents and employees. Except as required by law, and only to the extent so required, directors, agents and employees of Enterprise shall in no way be liable to any person or body for any loss, claim, demand, damages, costs or expenses of whatsoever nature arising in any way out of, or in connection with, the information contained in the document.

This document includes certain statements, opinions, projections, forecasts and other material, which reflect various assumptions. The assumptions may or may not prove to be correct. Recipients of the document must make their own independent investigations, consideration and evaluation of the opportunity to invest in the Company. By accepting this document the recipient agrees that if it proceeds further with its investigations, consideration or evaluation of the opportunity to invest in the Company it shall make and rely solely upon its own investigations and inquiries and will not in any way rely upon the document.



CORPORATE OBJECTIVE

“Increase Shareholder Value....”

How:

Discovery and/or acquisition under safe title
of
large & highly profitable

World Class Mineral Deposits

CORPORATE STRUCTURE

Issued Capital:	75.8765 M shares*
Options:	2.0 M @ 25 cents (31/12/09) 3.0 M @ 25 cents (22/11/12) 2.5 M @ 50 cents (30/06/13)
Share price (close 15 June 2009):	\$0.195
Market Capitalisation:	\$14.8 million
Cash at bank:	\$1.7 million @ 31 March 2009

* 15.225M shares coming out of Escrow on 20 June 2009

STRONG MANAGEMENT TEAM

Paul Larsen - Non Executive Chairman

- Successful private company director
- 26 years experience in construction, management & major projects

Dermot Ryan - Managing Director FAusIMM, CP (Geo)

- Geologist with 33 years multi-commodity experience
- 20 years CRA Ltd inc. 10 years as Chief Geologist CRA Exploration
- 5 years Great Central Mines, GM Expl. Jundee, Bronzewing, Wiluna

Bruce Hawley - Executive Director FAusIMM, CP (Management)

- Chemical engineer with 36 years experience in mining projects
- Specialist project management, development & construction phases

EXPLORATION EXPERTISE

“contracted, available on demand”

GEOLOGISTS

- Neil Provins
- Hugh Bunge
- Vic Williams
- Mike Kammermann
- Frank Doedens

GEOPHYSICISTS

- Bill Robertson
- Geoff Garton

DATABASE/GIS SPECIALISTS

- Peter Litic
- Brett Scott

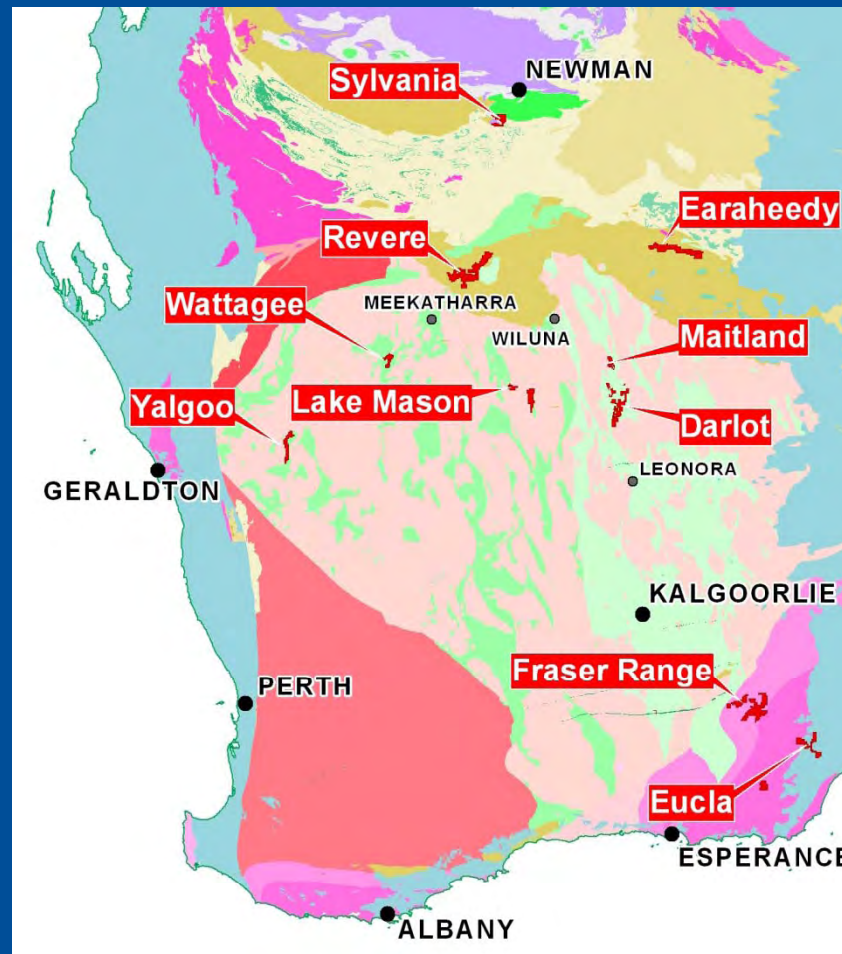
Project Locations - June 2009

Gold

- Revere
- Darlot
- Wattagee
- Yalgoo

Uranium

- Maitland
- Lake Mason
- Darlot
- Sylvania



Iron Ore

- Sylvania
- Earraheedy
- Fraser Range

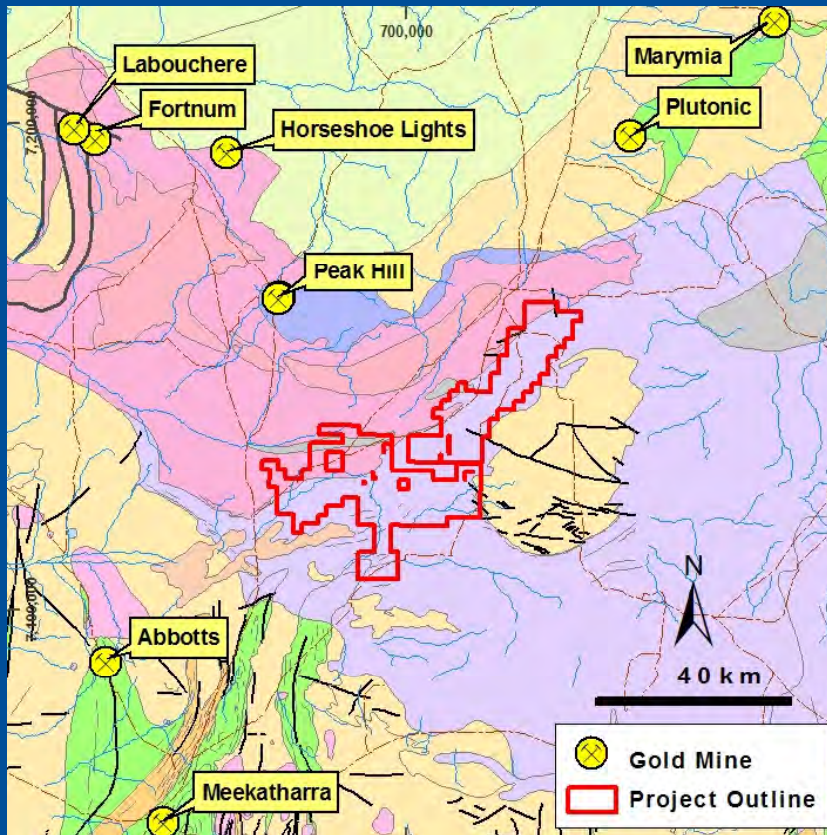
Base Metals

- Revere (Cu/Au)
- Eucla (Cu/Au?)

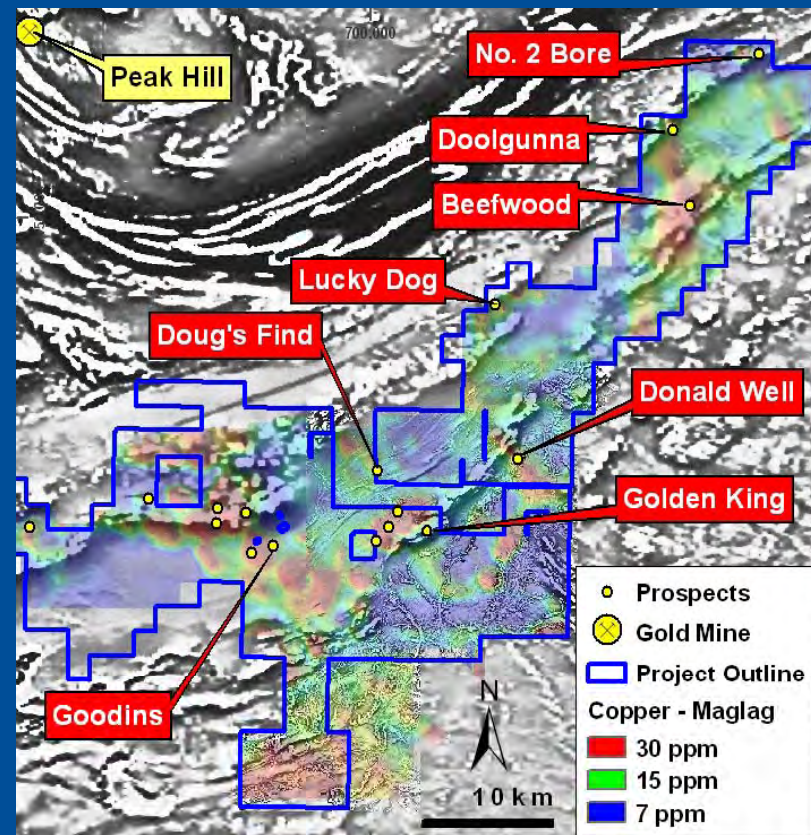
Revere Project (100%)

Au/Cu

Geology



Targets

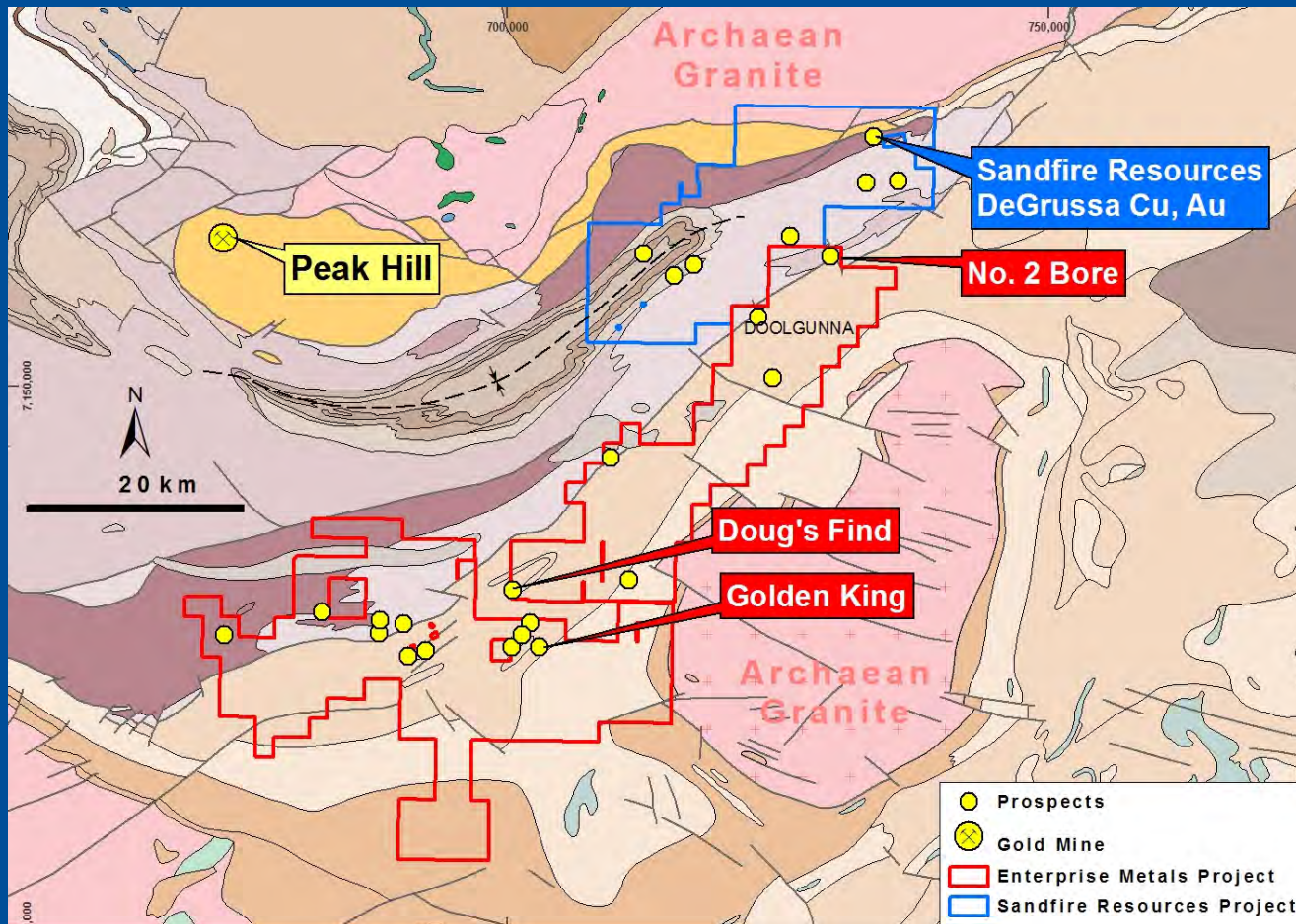


Target: Sediment hosted stratiform Cu/Au deposit or stockwork Au deposit

- Intracratonic Proterozoic sedimentary basin
- Thin Proterozoic sedimentary sequences onlapping Archaean granite/greenstones
- Geochemical/structural/geophysical targets identified for further IP and drill testing

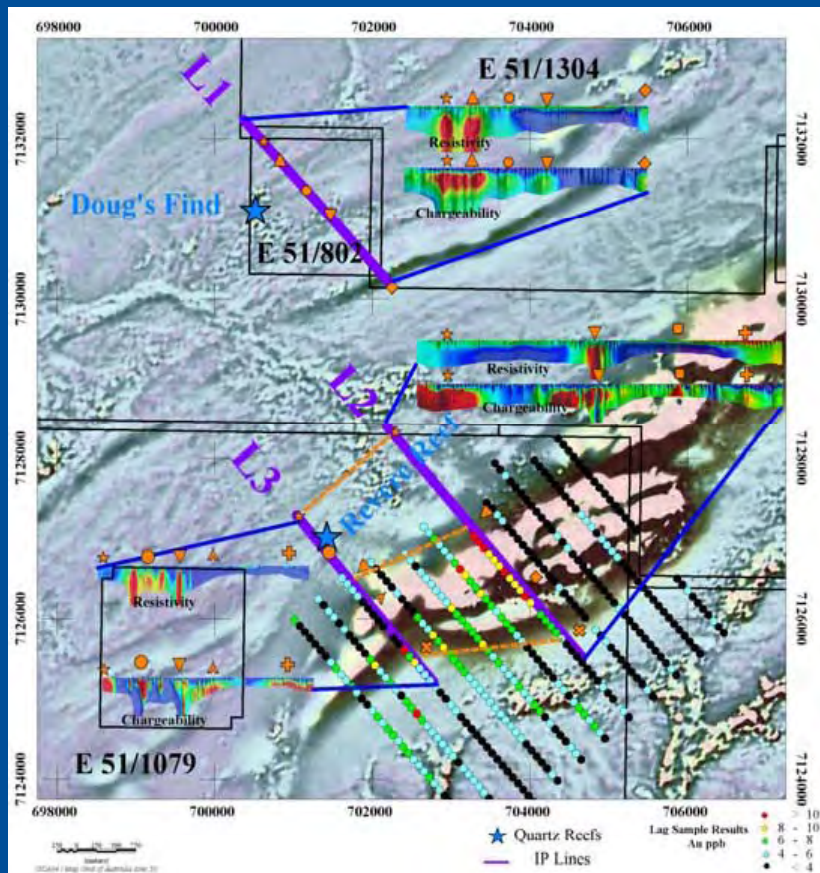
Revere Project (100%)

Au/Cu



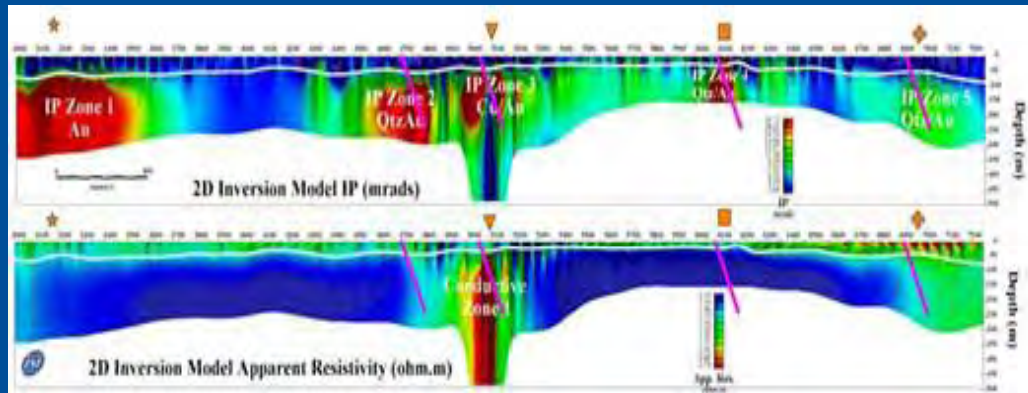
Sandfire Resources Ltd DeGrussa drill results indicate leached cap & Au/Cu enrichment blanket

Revere Project – Golden King

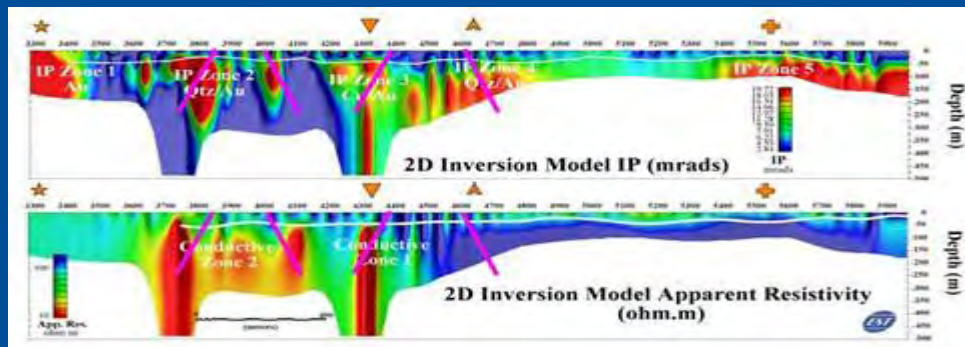


- 3 Lines of IP completed.
- Conductors and chargeability anomalies detected coincident with magnetic & Cu/Au geochemical targets.
- Resistivity anomalies coincident with Au in quartz veins.
- Deep weathering to 75 metres (& leaching of copper?)
- Further IP, and RC drilling, planned.

Revere Project – Golden King - IP



- Line 2 Conductor,
- Massive sulphide Cu (Au) Target.
- Disseminated target to west.



- Line 3 Conductors,
- Massive sulphide Cu (Au) Targets.
- Disseminated target to west.

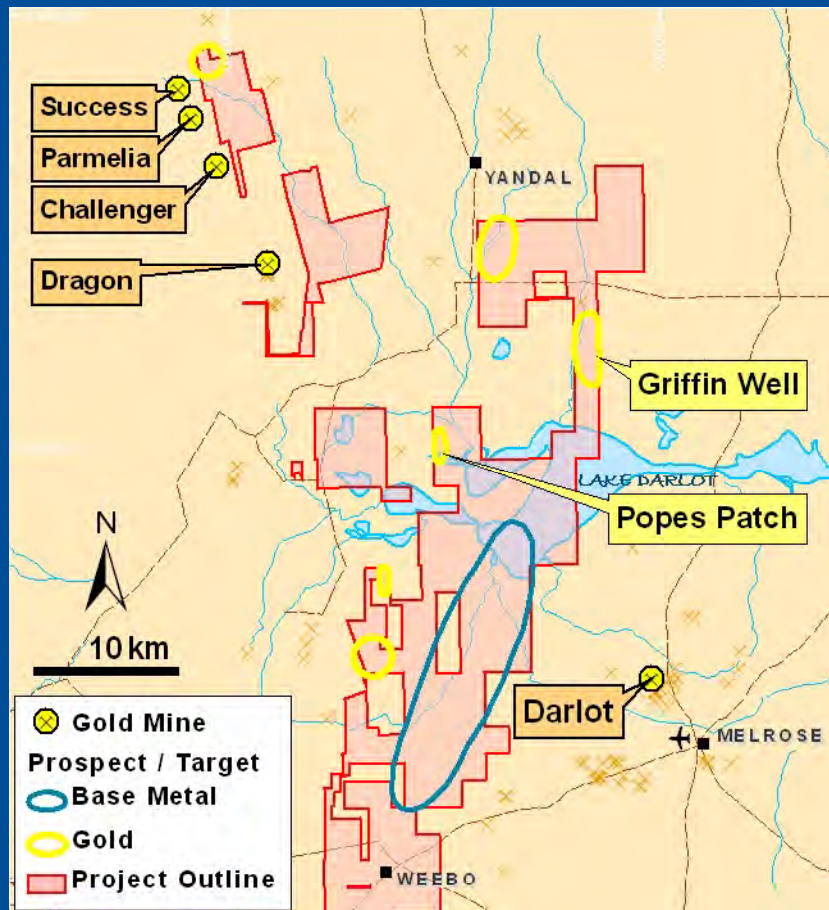
Planned RC holes in purple

Darlot Project

(100% *)

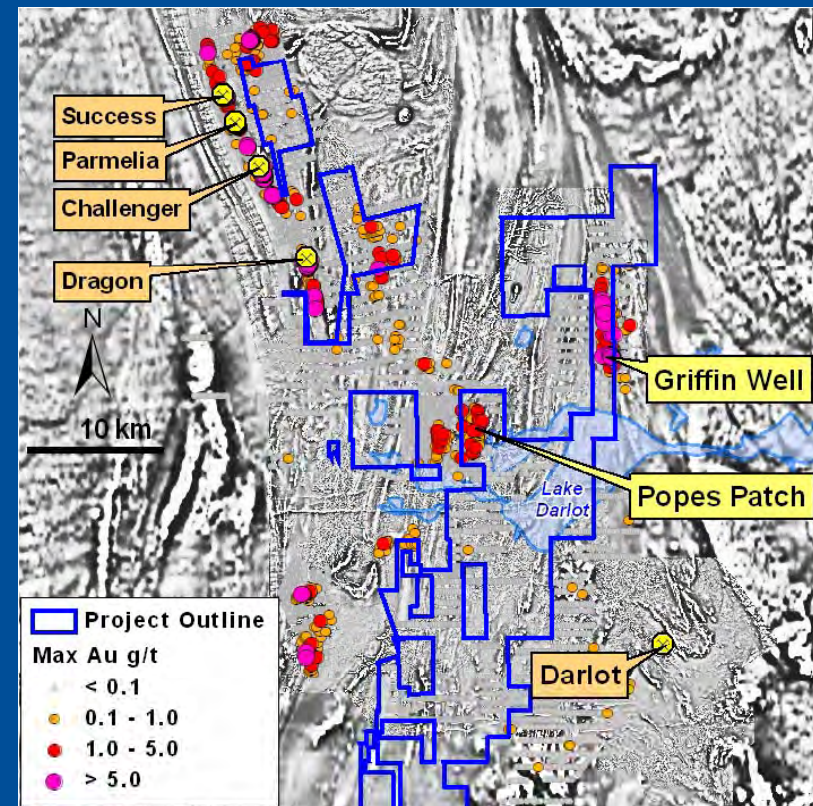
Au

Gold and Base Metal targets



* one tenement 80% owned

Historic Gold drilling results on magnetics

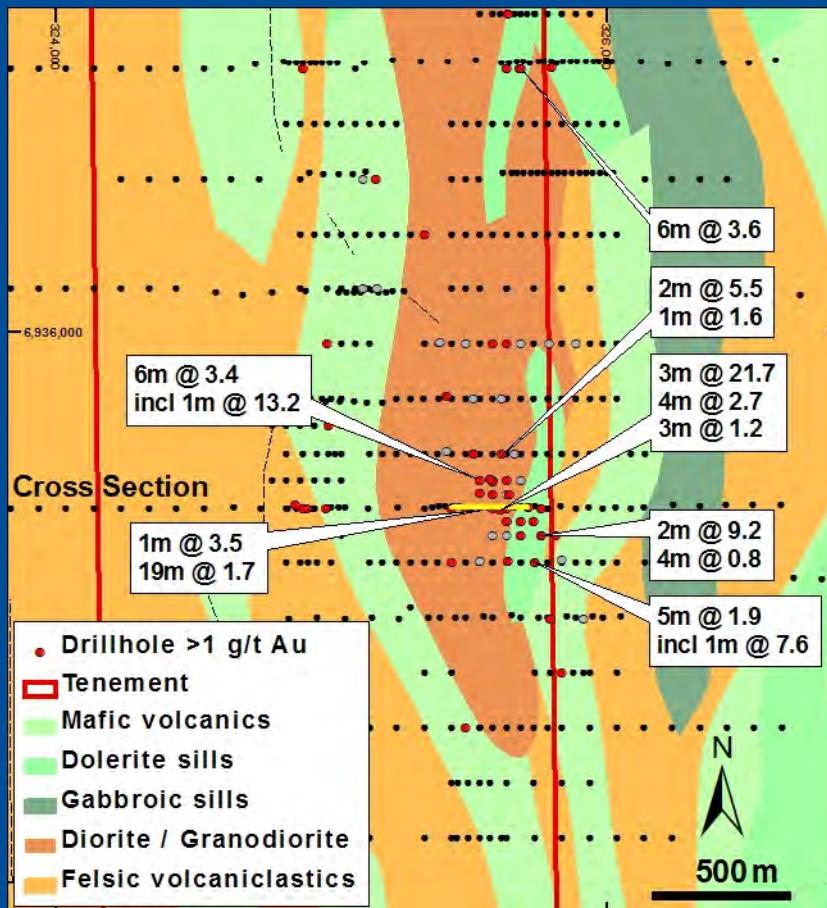


- Excellent gold/base metal targets based on previous RAB drilling & structural interpretation
- Favourable stratigraphy, under-drilled
- **IP in progress at Griffin Well**

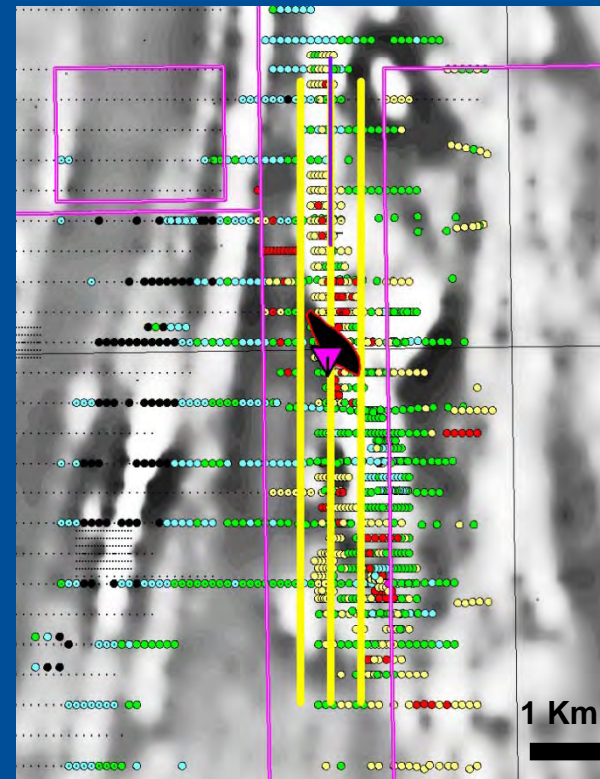
Darlot Project

Au

Griffin Well gold target



Griffin Well IP Lines on Magnetics



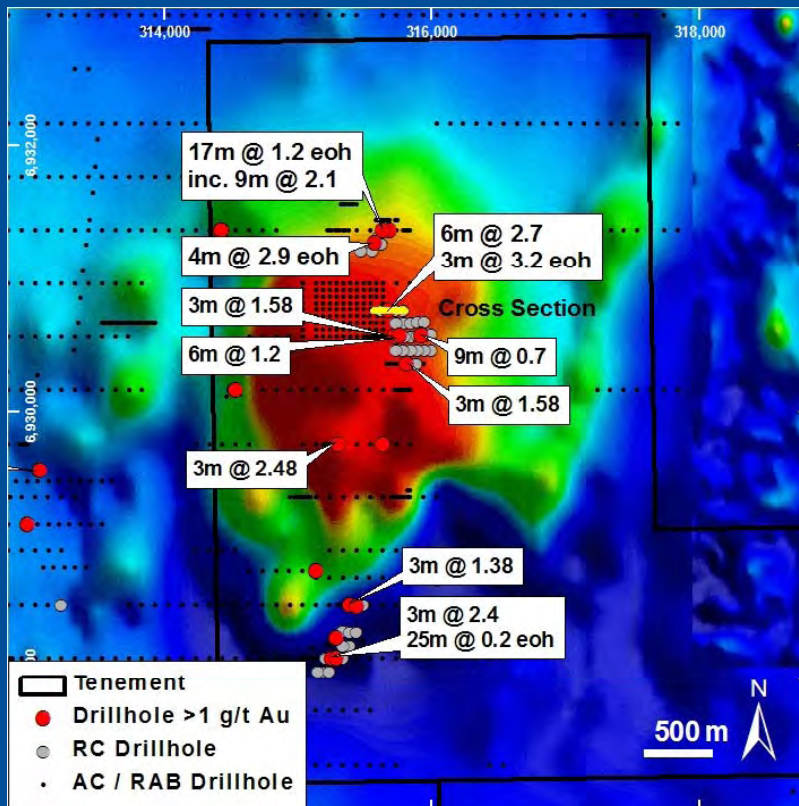
Target: Structurally controlled orogenic gold deposit

- Historical drilling with limited follow up
- Oblique mineralised structure not fully tested
- Deep RC drilling required
- **3 Line IP survey underway (in yellow)**

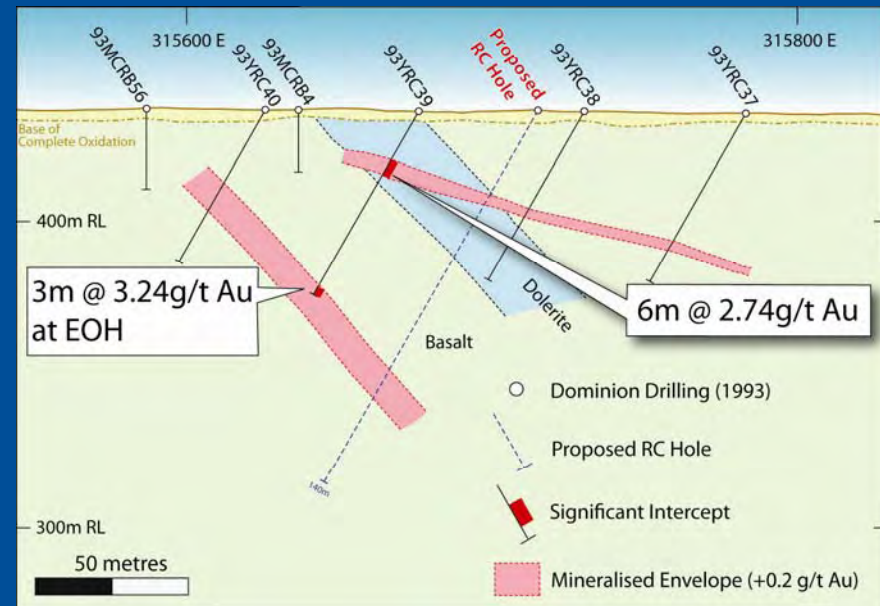
Darlot Project

Au

Popes Patch gold target



Popes Patch cross section

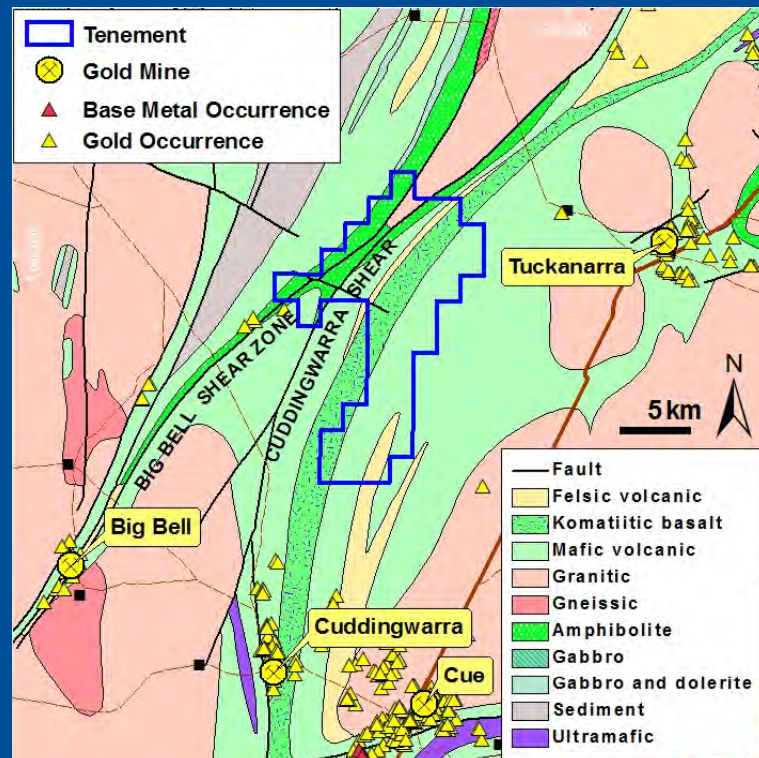


- Historical drilling with limited follow up
- 1,500m x 1,500m gold system
- Excellent gold targets based on structure/ RAB
- IP surveys required**

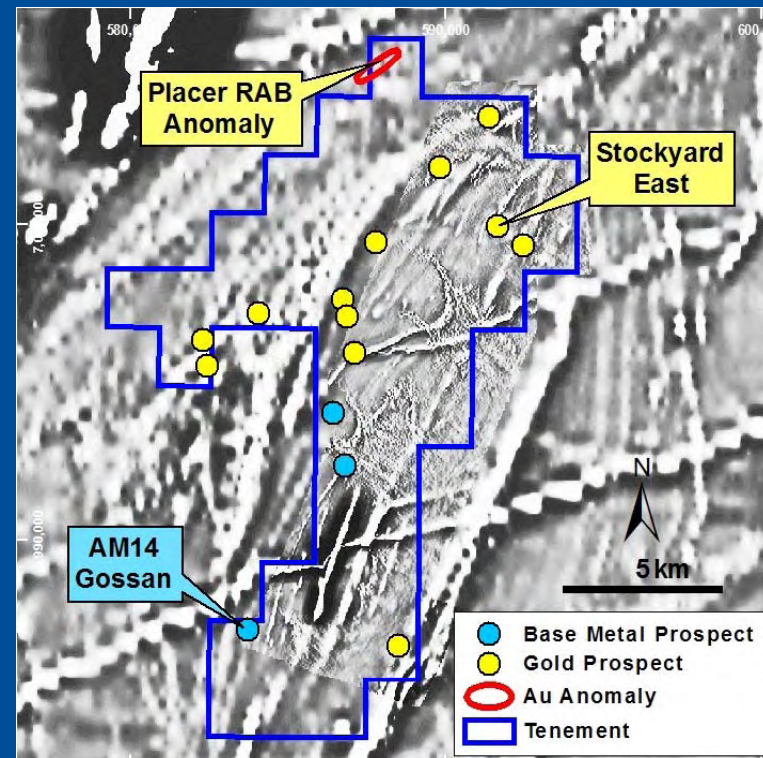
Wattagee Project (100%)

Au, BM

Geology



Magnetics and Prospects



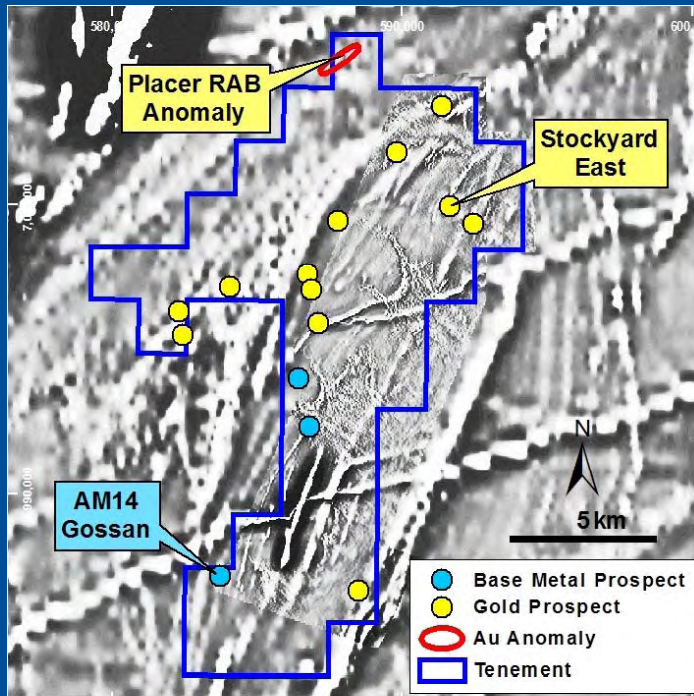
Targets: Archaean orogenic Au deposit & VMS Cu/Zn deposits

- Covers 143 km² prospective Archaean greenstone & felsic volcanics
- “Big Bell” style conceptual targets for gold along Cuddingwarra Shear
- Historical RC results encouraging, eg. 4m @ 17.9g/t Au from 114m –Stockyard East
- **IP survey required over AM14 Gossan & Placer RAB anomaly**

Wattagee Project

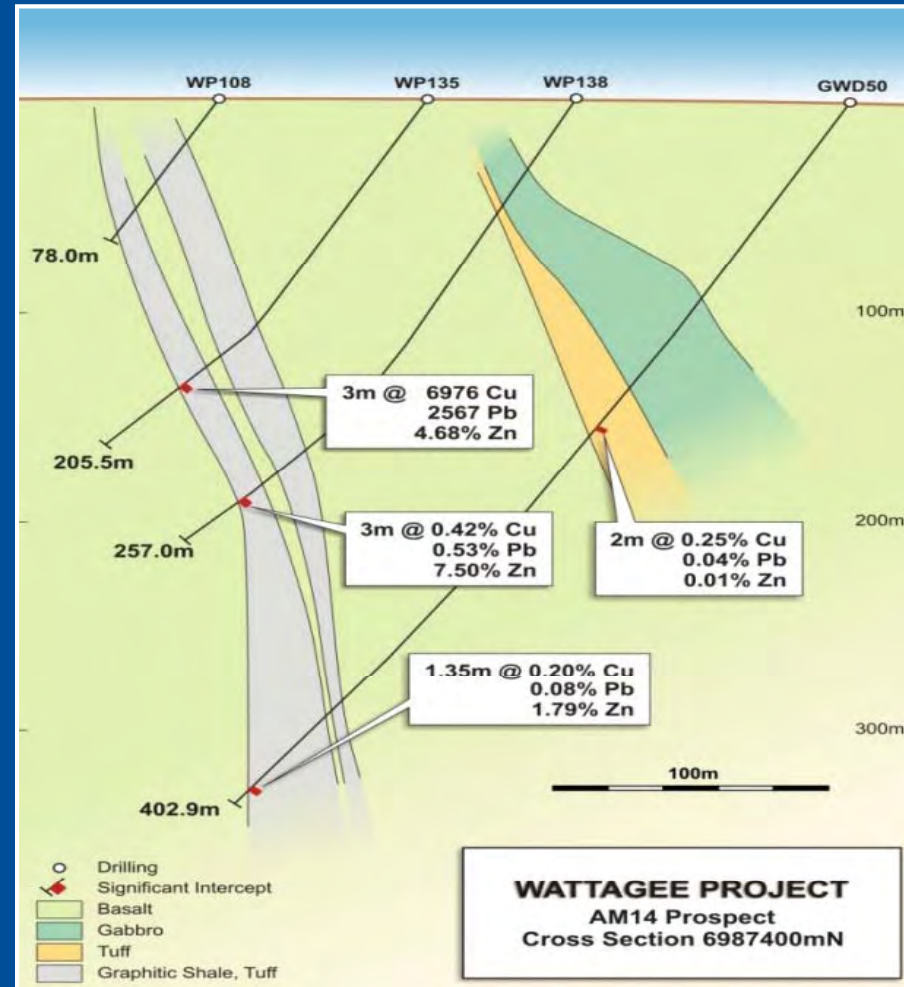
Au, BM

Magnetics and Prospects

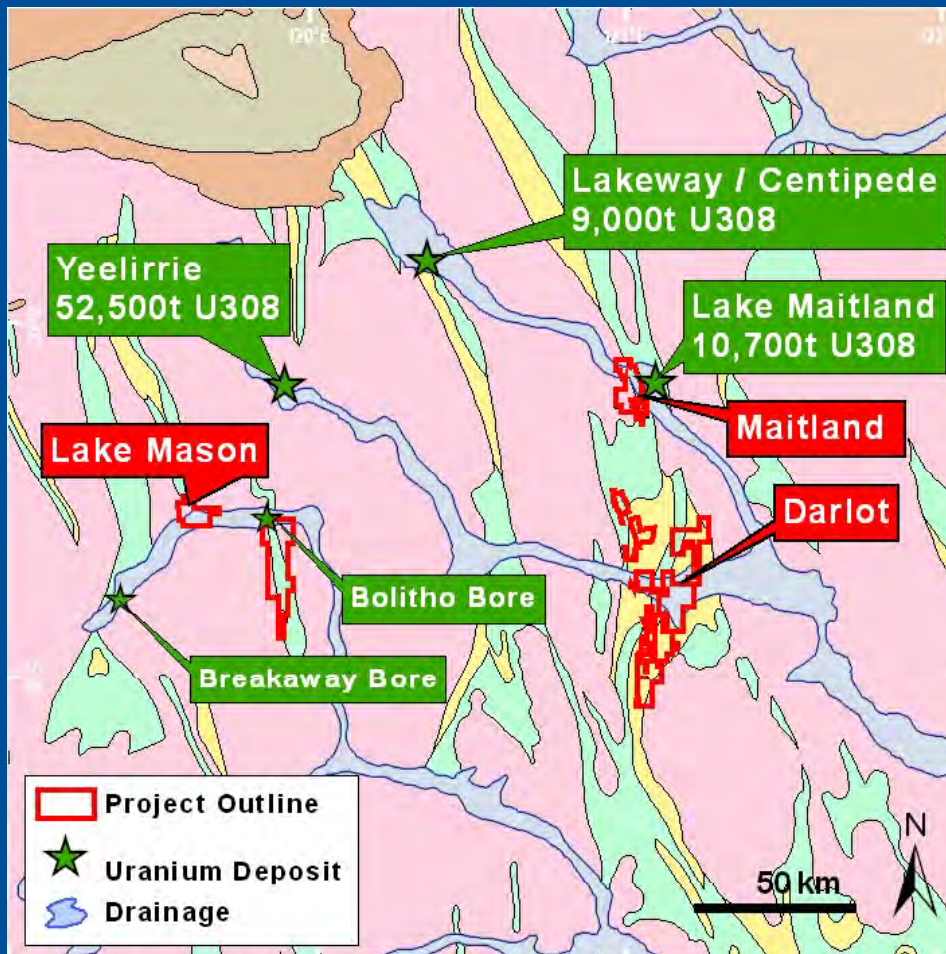


Historical RC results encouraging
 eg. 3m @ 7.5% Zn,
 Geophysics (IP) and RC drilling required.
 (POW submitted)

AM 14 Base metal prospect



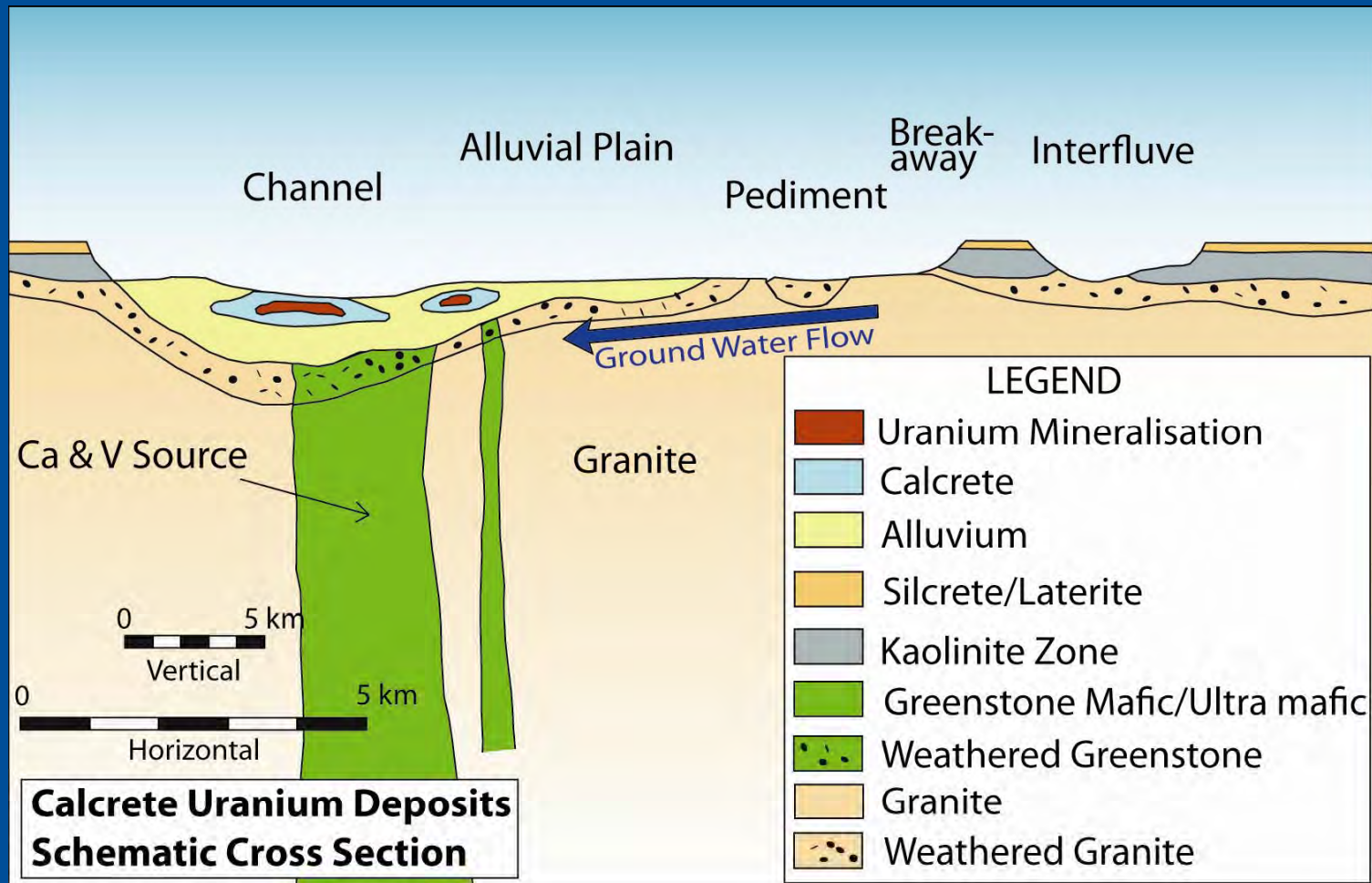
Yilgarn Uranium Resources & Projects



Calcrete hosted uranium deposits

- Soluble Uranium sourced from granites
- Uranium (carnotite) precipitated in calcrete over greenstone belts after addition of Ca and V.

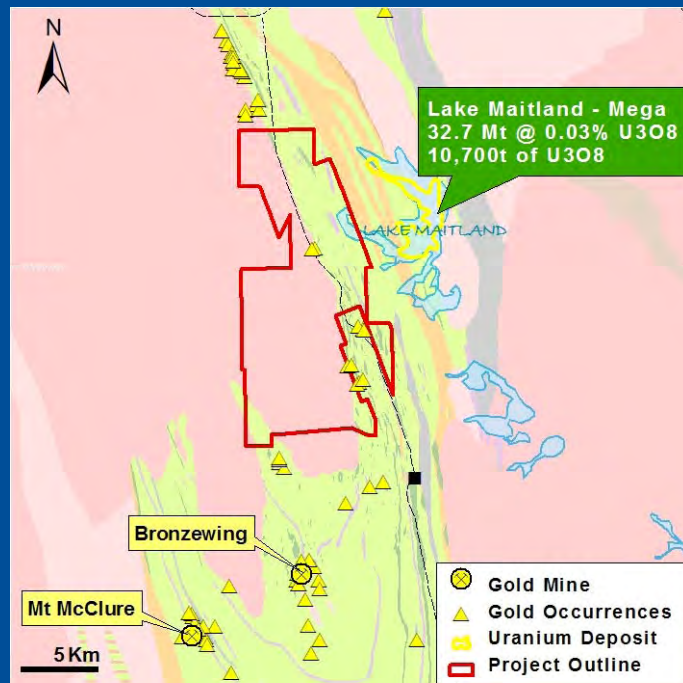
Yilgarn Uranium Resources & Projects



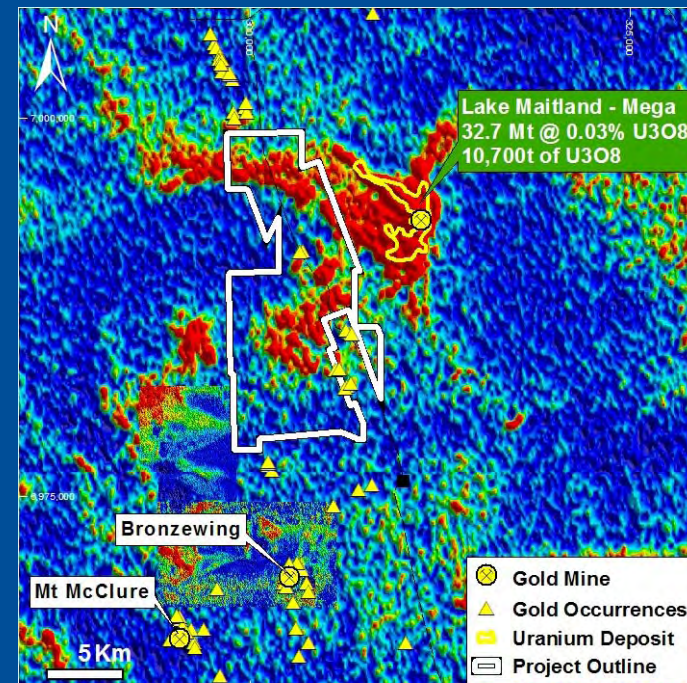
Maitland Project (70%, uranium only)



Geology



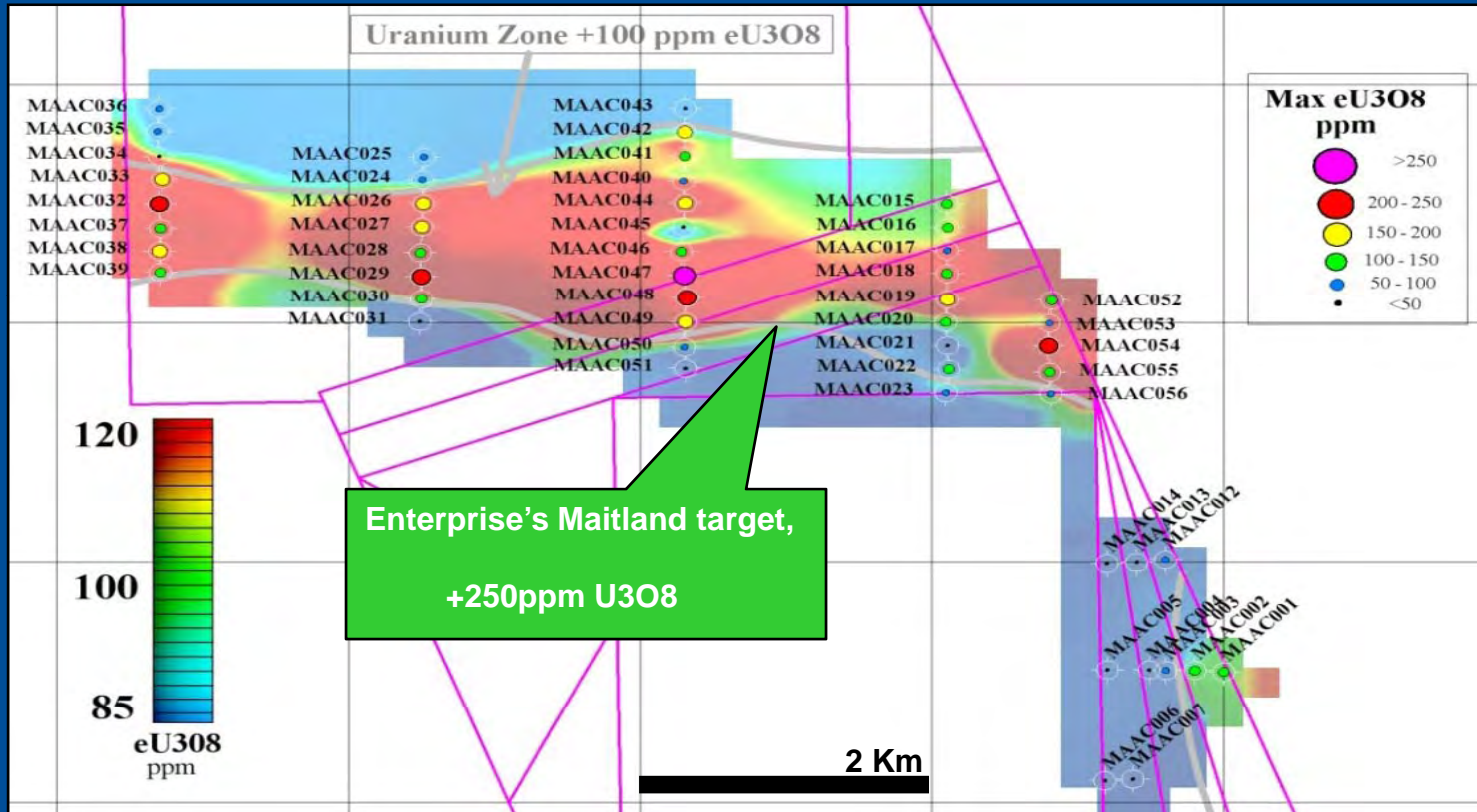
Uranium Channel



Target: Calcrete hosted uranium, “Yeelirrie style”

- 70% interest in “Uranium only” joint venture with Mark Creasy
- Covers part of Lake Maitland channel over Yandal greenstone belt
- Lies immediately west of Mega Uranium’s known calcrete deposit
- Little previous drilling for uranium on Lake Maitland channel

Maitland Project -AC Drilling Results

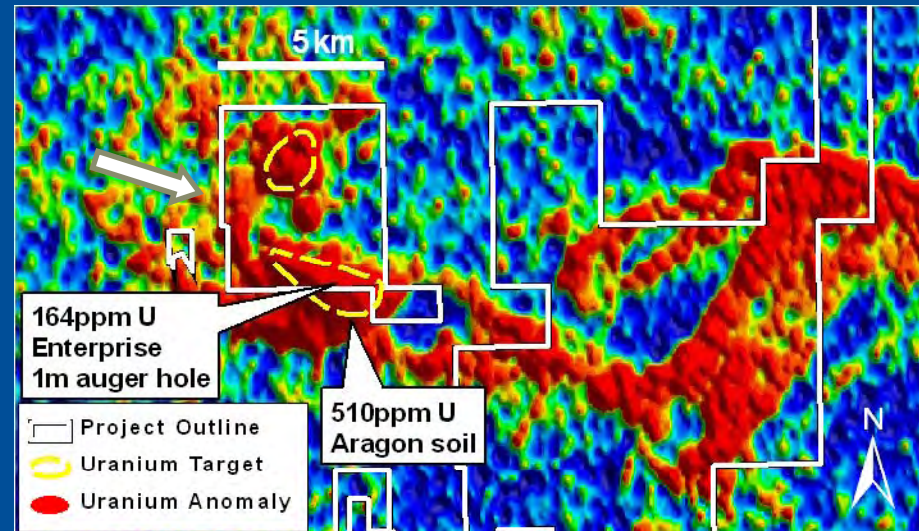
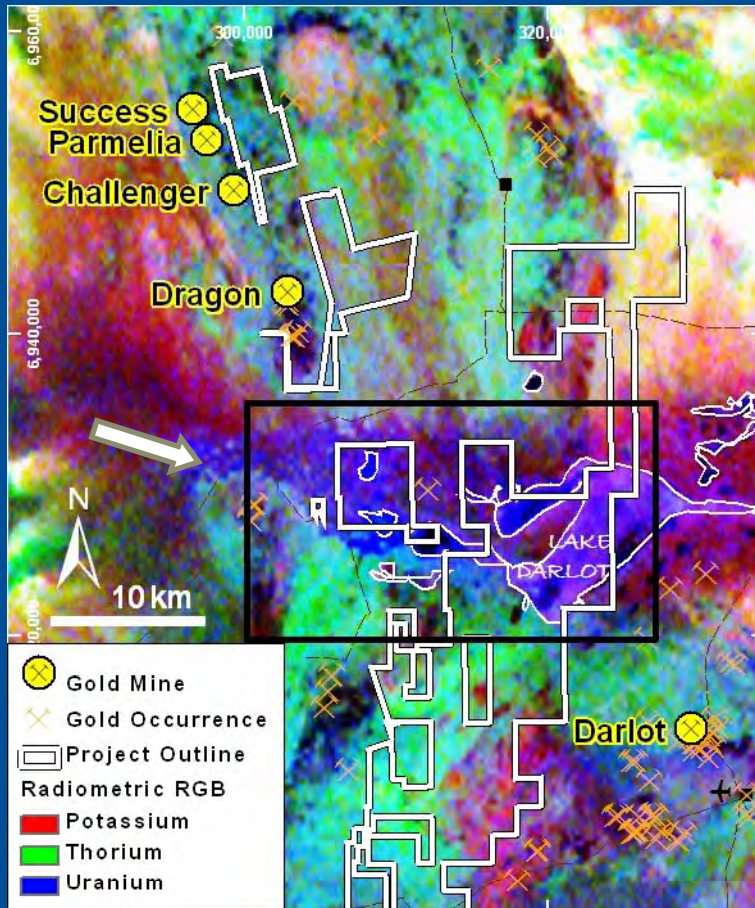


- Reconnaissance aircore drilling by Enterprise west of Mega Uranium's calcrete deposit
- 5km long Core Zone of +200ppm uranium
- **Infill drilling required.**

Darlot Project

(100%)

U



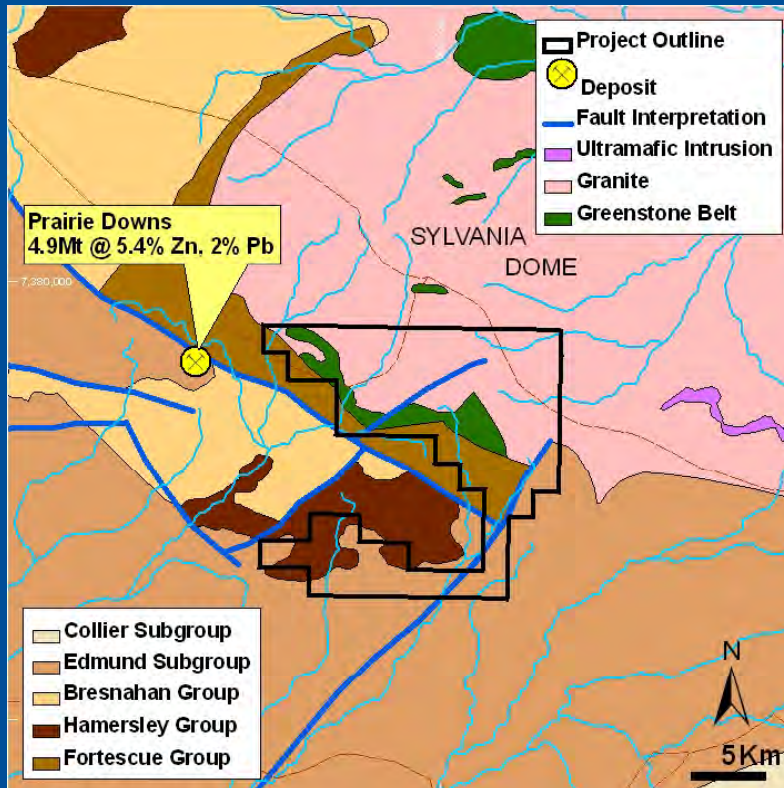
Target: Calcrete hosted uranium, "Yeelirrie style"

- Downstream from BHPB's Yeelirrie, 52,500t U_3O_8
- Strong evidence in GSWA radiometric data
- Little previous drilling on Lake Darlot itself
- **Enterprise soil sampling – max 164ppm U**

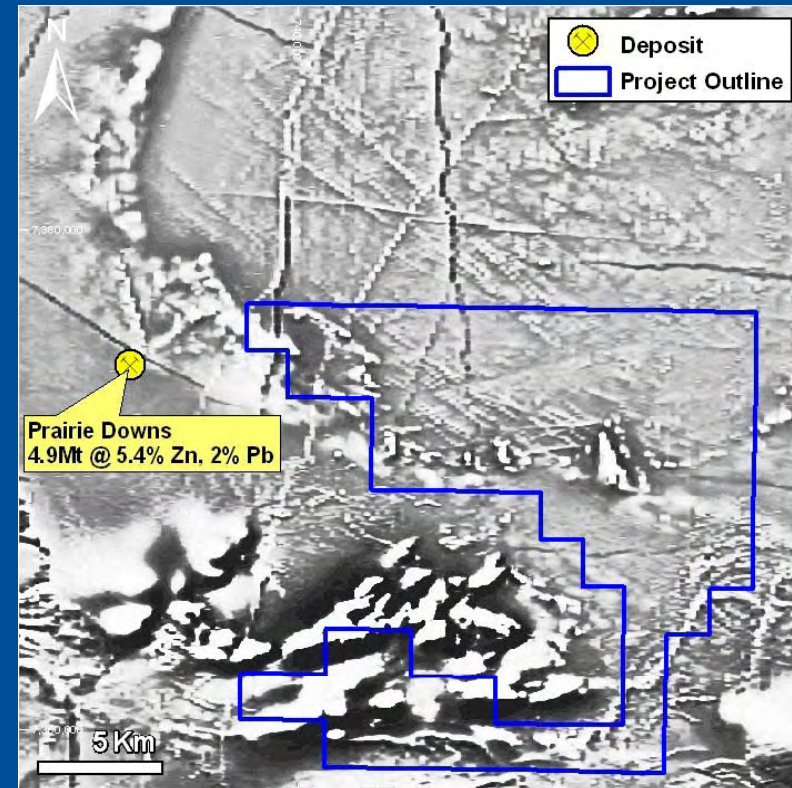
Sylvania Project (100%)

Fe

Geology



Magnetics



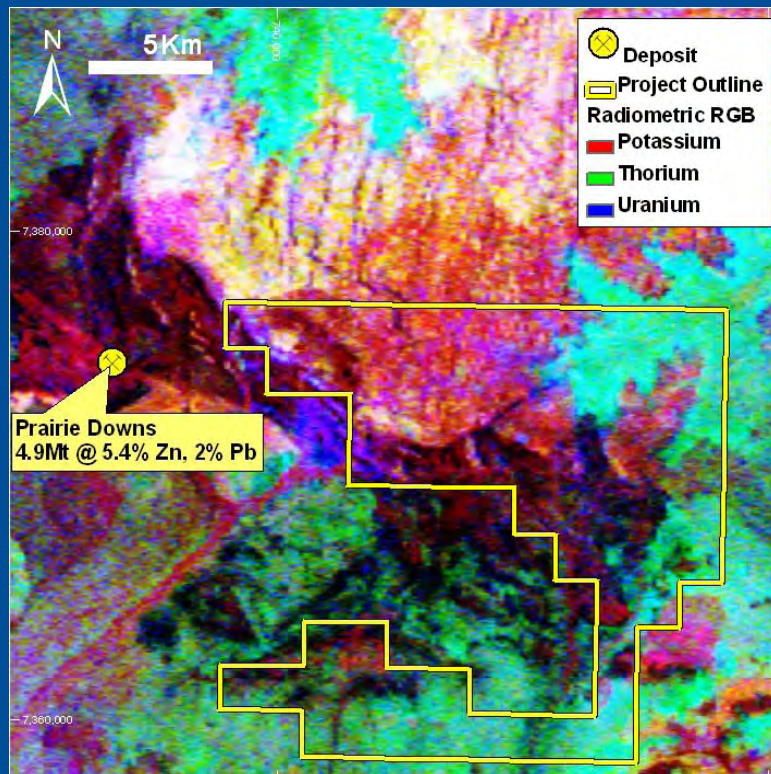
Target: Proterozoic sediments - hematite iron deposit, "Hamersley style"

- Recent drilling in adjacent tenement by iron ore major in Brockman Iron Formation

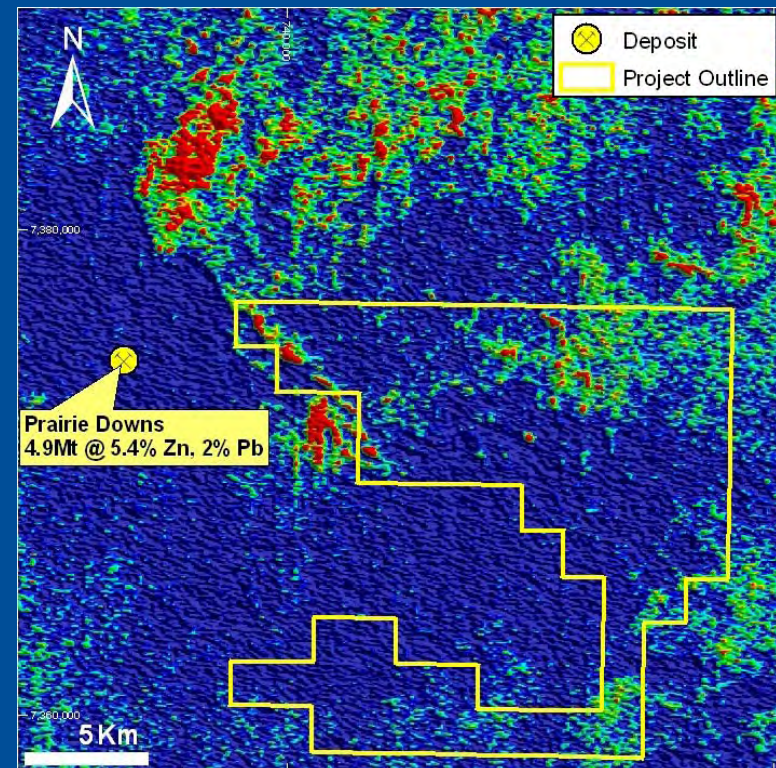
Sylvania Project



RGB Radiometrics



Uranium Channel

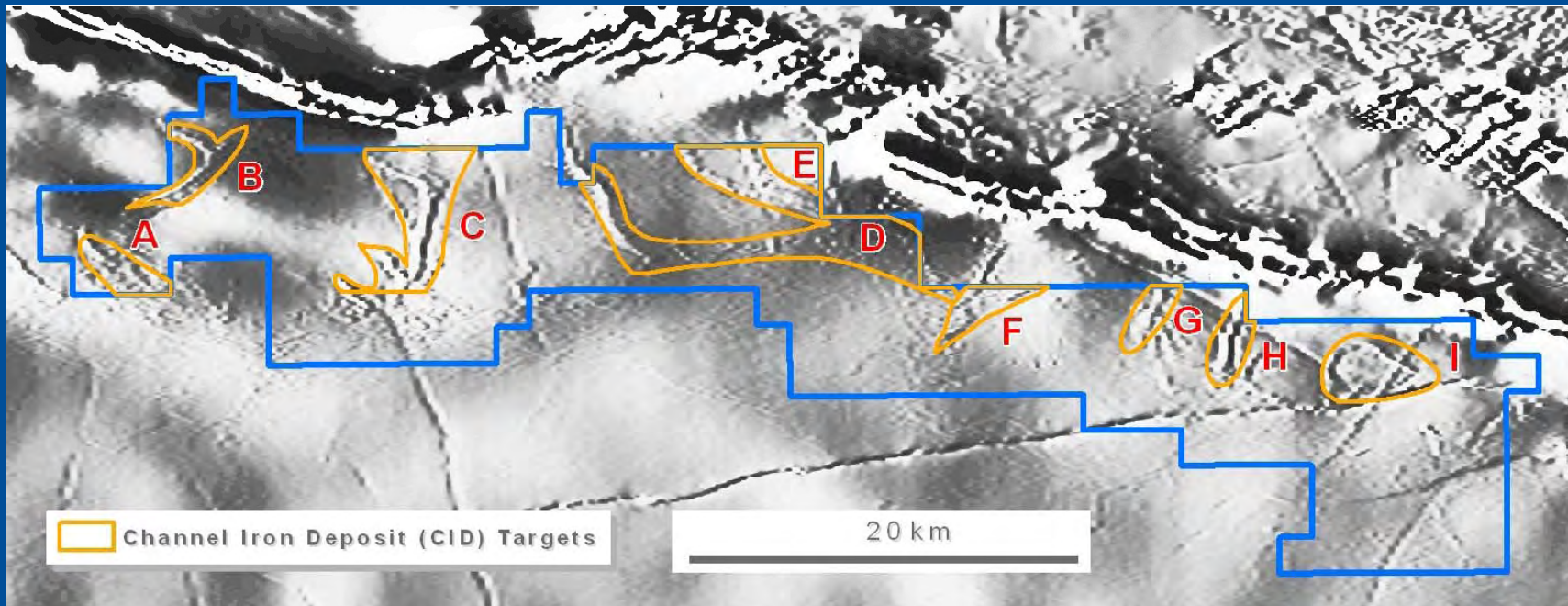


Target: Unconformity/shear hosted uranium deposit

- Uranium occurrences at unconformity, overlying Sylvania Dome granite
- Strong airborne radiometric response associated with unconformity
- Previous work by CRA/PNC - max 0.52% U₃O₈ in calcrete

Earaheedy Project (100%)

Fe

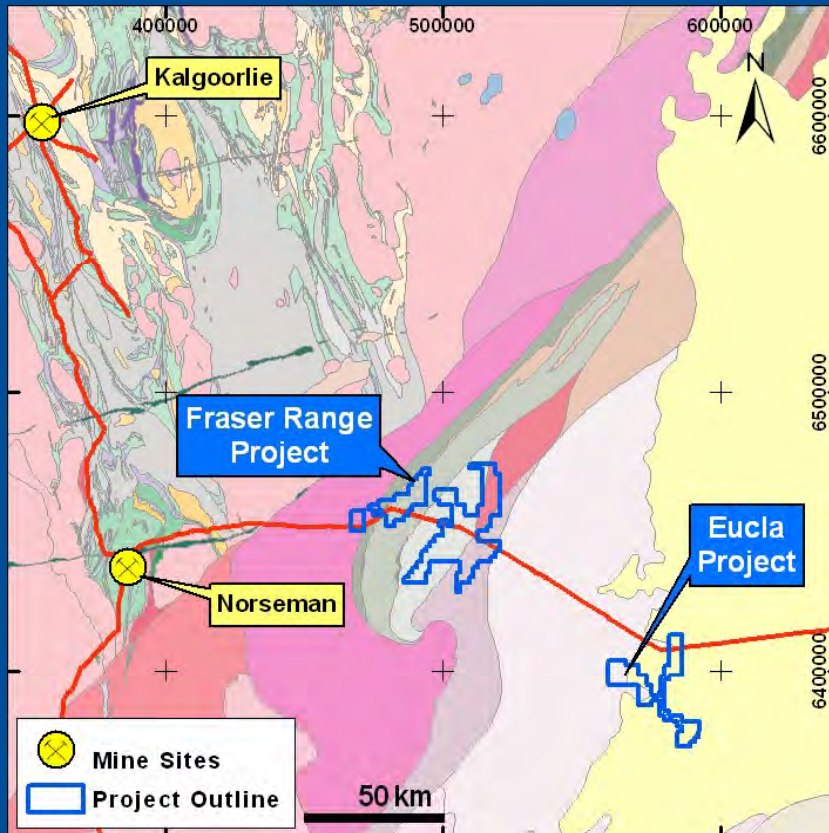


Target: Channel Iron Deposit (“CID”) in Proterozoic sediments

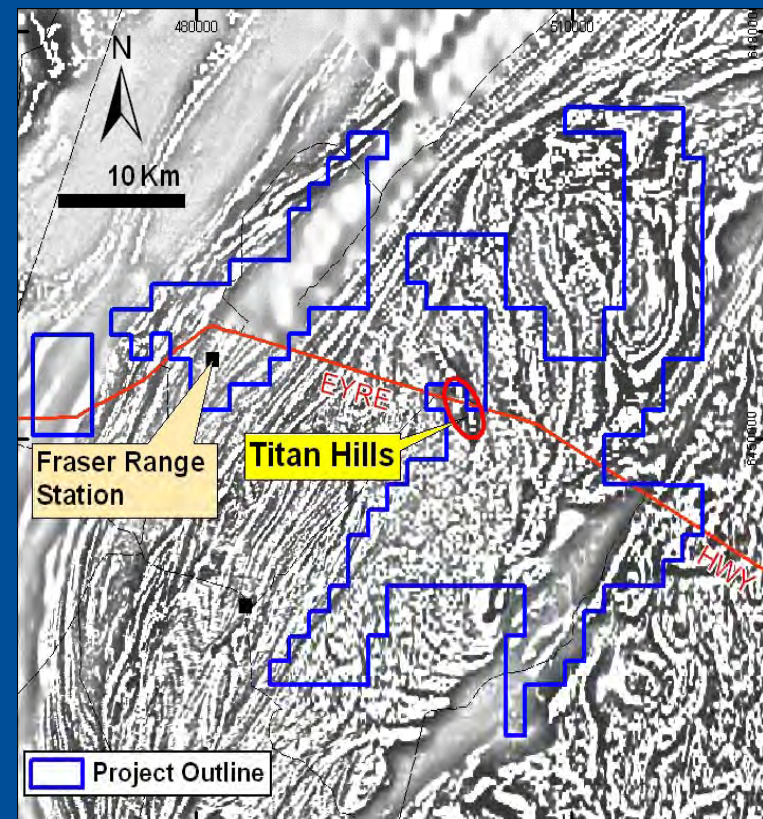
- Proterozoic Bif's in Nabberu Basin
- “Magnetic channels” - aeromagnetics suggest CID's present
- Tenement still in application, early stage

Fraser Range Project (100%) **Fe, Ti, Au**

Geology



Magnetics



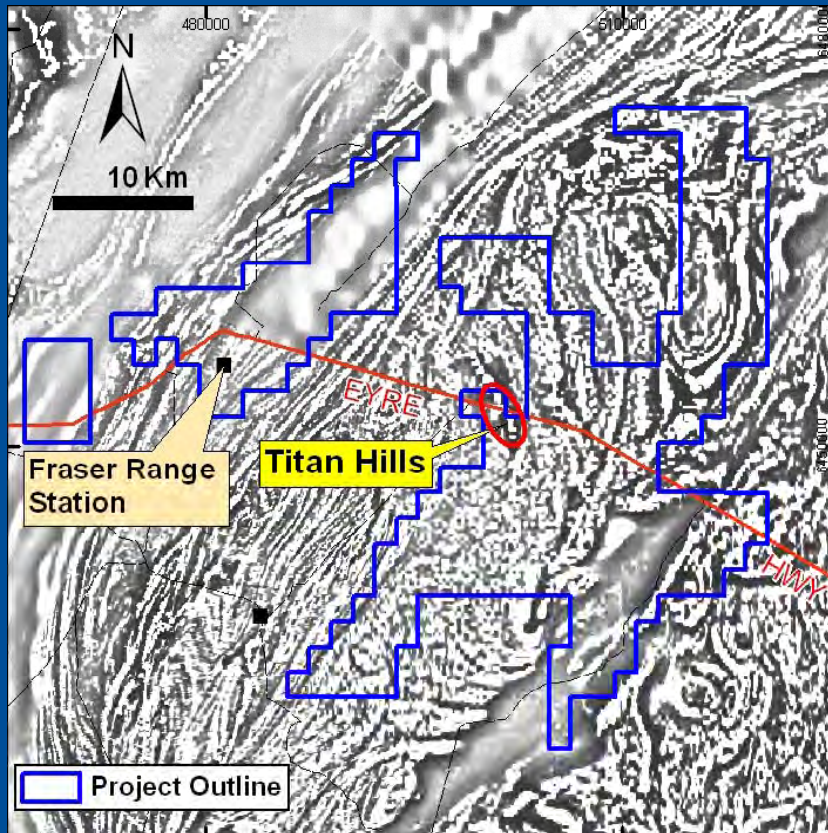
Target: Magmatic Titaniferous Iron Deposit in Proterozoic metamorphic rocks

- Also potential for shear hosted Gold deposits (cf Tropicana) , Ni/Cu – PGE's & Base Metals
- Tenements still in application, early stages

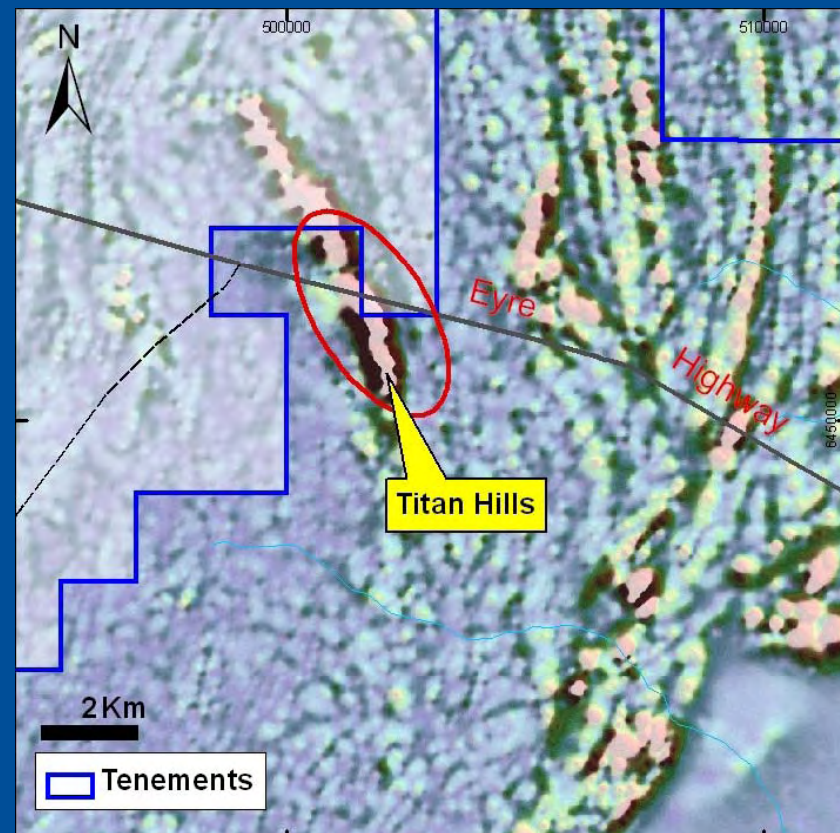
Fraser Range Project

Fe, Ti, Au

Magnetics



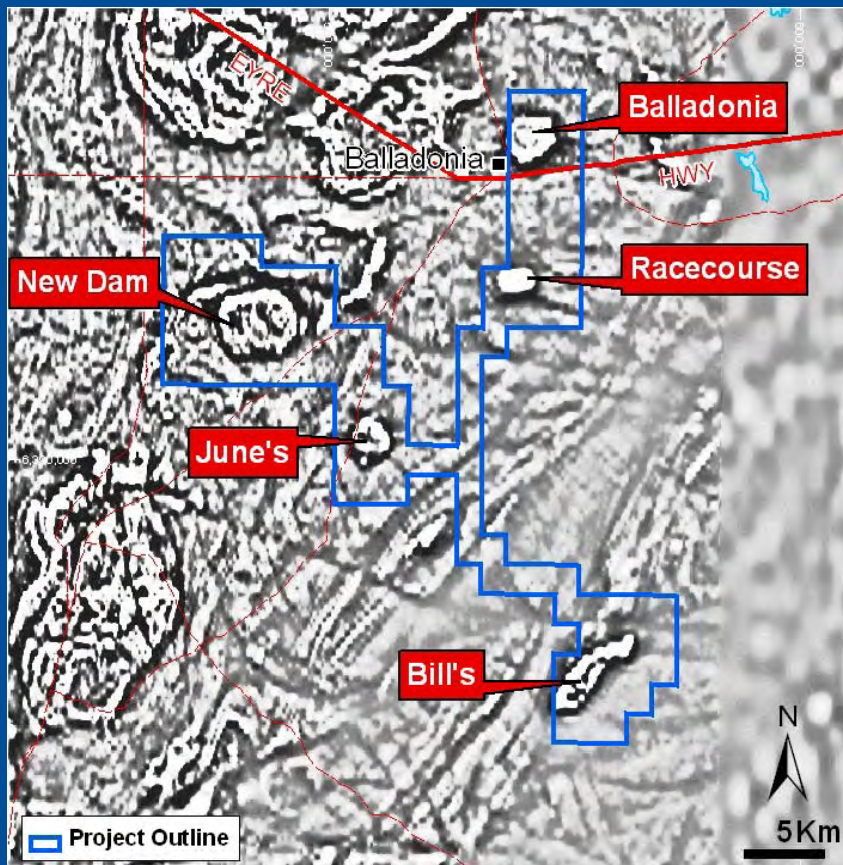
Titaniferous magnetite



- Aeromagnetics define 7,000m long anomaly: 3,500m on Company tenement
- Rock chips by previous explorers: max 38% TiO₂
- Tenements still in application, early stages

Eucla Project

Fe?, Cu/Au,? Ni/Cu?



- Large, discrete & intense airborne magnetic targets identified in DMP regional airborne survey data, 100 km ESE of Fraser Range at Balladonia
- Targets along major NE-SW corridor on margin of Eucla Basin
- Potential for major iron oxide or iron sulphide (pyrrhotite) accumulations (Iron oxide-copper gold “IOCG” or ultramafic Ni/Cu-PGE potential?)
- Detailed airborne magnetic survey underway

ENTERPRISE METALS LTD

“Small opportunities are often the beginning of great

ENTERPRISES”

Demosthenes (384BC-322BC)

Reporting of Exploration Results

The information in this report that relates to Exploration Results, Mineral Resources or Ore Reserves is based on information compiled by Dermot Ryan, a Fellow of the Australasian Institute of Mining & Metallurgy. Dermot Ryan is a Director of the Company and a geological consultant to it through XServ Pty Ltd.

Dermot Ryan has sufficient experience which is relevant to the style of mineralisation and type of deposit under consideration and to the activity which he is undertaking to qualify as a 'Competent Person' as defined in the 2004 Edition of the 'Australian Code for Reporting of Exploration Results, Mineral Resources and Ore Reserves'. Dermot Ryan consents to the inclusion in this report of the matters based on his information in the form and context in which it appears.