

ENTERPRISE METALS LTD



Investor Presentation Toronto

4 March 2012

www.enterprisemetals.com.au

Disclaimer

This document has been prepared by Enterprise Metals Ltd (“Enterprise” or “the Company”) to provide an update of the Company to investors and potential new shareholders. This presentation should be read in conjunction with other public announcements and reports (including financial reports and disclosure documents) released by Enterprise. Any statements, opinions, projections, forecasts or other material contained in this document do not constitute any commitments, representations or warranties by Enterprise and associated entities or its directors, agents and employees. Except as required by law, and only to the extent so required, directors, agents and employees of Enterprise shall in no way be liable to any person or body for any loss, claim, demand, damages, costs or expenses of whatsoever nature arising in any way out of, or in connection with, the information contained in the document. This document includes certain statements, opinions, projections, forecasts and other material, which reflect various assumptions. The assumptions may or may not prove to be correct. Recipients of the document must make their own independent investigations, consideration and evaluation of the opportunity to invest in the Company. By accepting this document the recipient agrees that if it proceeds further with its investigations, consideration or evaluation of the opportunity to invest in the Company it shall make and rely solely upon its own investigations and inquiries and will not in any way rely upon the document.

SHARE STRUCTURE



Issued Capital **203.22 million shares**

Share price **\$0.175 (close 29 Feb 2012)**

Market Capitalisation **\$35.5 million**

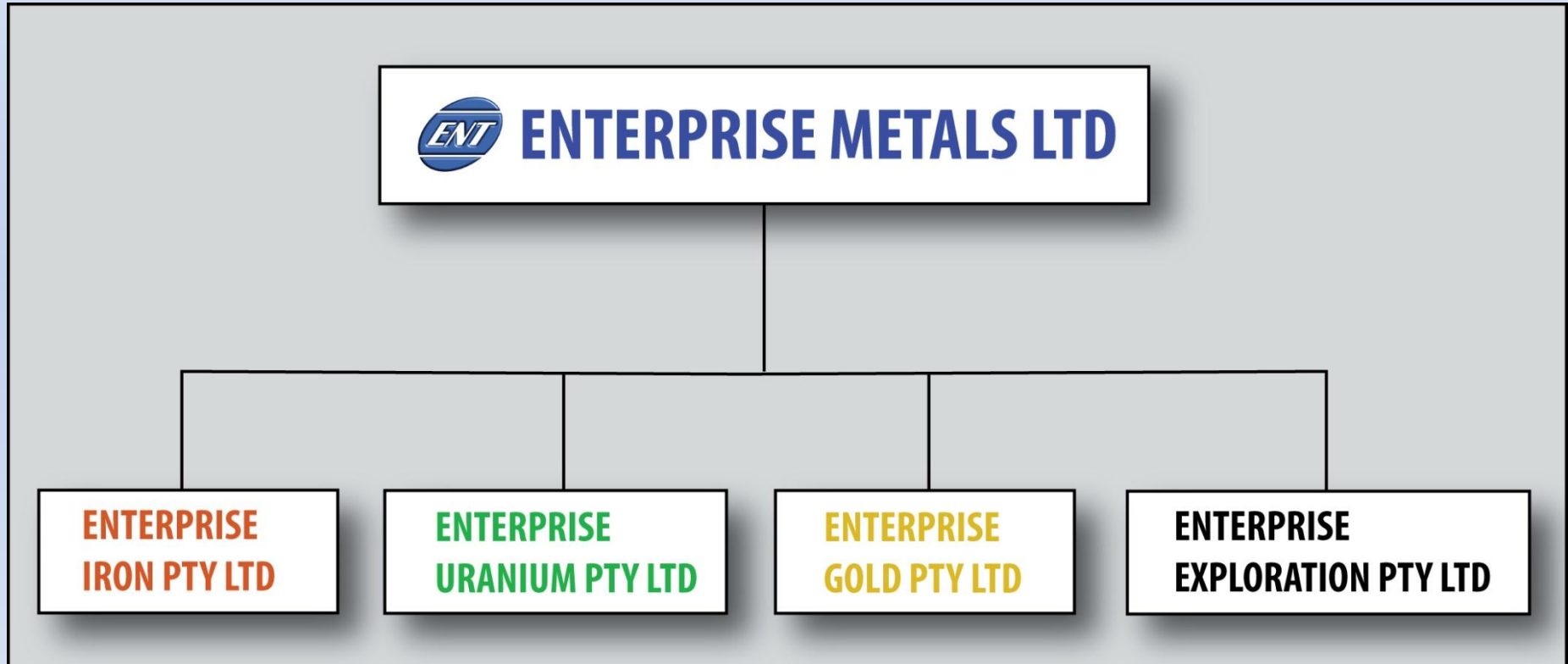
Cash at bank **~\$11.5 million @ 31 Dec 2011**

Listed & Unlisted Options **84.0 million @ 25 cents (6/2012 - 7/2014)**
2.5 million @ 50 cents

- Major Shareholder SinoTech **62.0 million shares (30.5%)**

“....a Western Australian focussed explorer...”

COMPANY STRUCTURE





- **Subsidiary of Sinotech Minerals Exploration Co., Ltd.**
- **Beijing Institute of Geology for Mineral Resources (BIGM) is major shareholder (45%).**
- **Focus is exploration, mine development and geo-services.**
- **Enterprise is first equity investment in Australia.**
- **Sinotech aims to create an international exploration & mining company by strategic partnering with locally based exploration companies.**
- **Holds a 20% interest in Canaco Resources Inc. (TSX-V: CAN) and 41% interest in Silvore Fox Minerals Corp. (TSX-V: SFX).**

“Investment in foreign public companies, our strategy”

- **Discover well-credited junior exploration companies with good properties.**
- **Provide financial and technical support, even properties if necessary.**
- **Adjust our shareholding position according to corporate demand & market reaction and expectation – whatever can grow the company and increase shareholder value.**
- **Long-term strategic partnership.**

DIRECTORS



Dr. Jingbin Wang BSc, MSc, PhD - Chairman (Non-Executive)

- Geologist with 26 years multi-commodity, multi-national experience

Dermot Ryan BApSc(Geo), FAusIMM, CP (Geo) - Managing Director

- Geologist with 34 years multi-commodity experience

Paul Hallam BE Mining (Hons), FAusIMM, FAICD, Director (Non-Executive)

- Mining engineer/operations director, 34 years multi-commodity experience.

Paul Larsen - Director (Non-Executive)

- Successful private company director

Bruce Hawley BE Chem (Hons), FAusIMM, CP (Mgn't) - Director (Non-Executive)

- Chemical engineer/project manager, 36 years experience in mining projects

Anna Mao MBA - Director (Non-Executive)

- MBA from Richard Ivey Business School of Western Ontario University

Dr. Zhen Huang BSc, MSc, PhD - Director (Non-Executive)

- Geologist with 29 years multi-commodity, multi-national experience

Dennis Wilkins: Company Secretary & CFO

Project Locations

Iron Ore

- Booylgoo
- Burracoppin
- Earaaheedy
- Sylvania

Gold

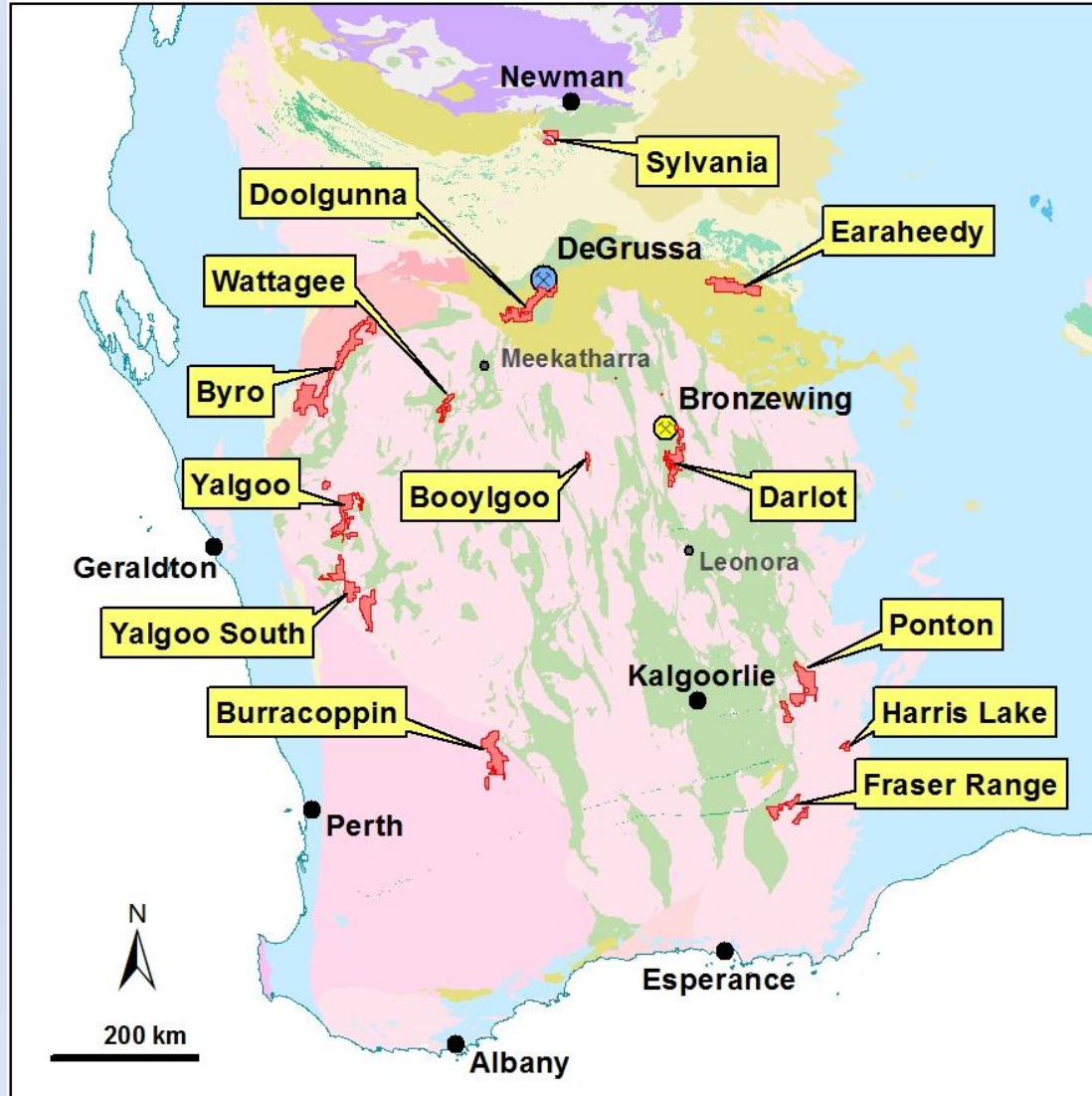
- Darlot
- Burracoppin
- Wattagee
- Fraser Range

Uranium

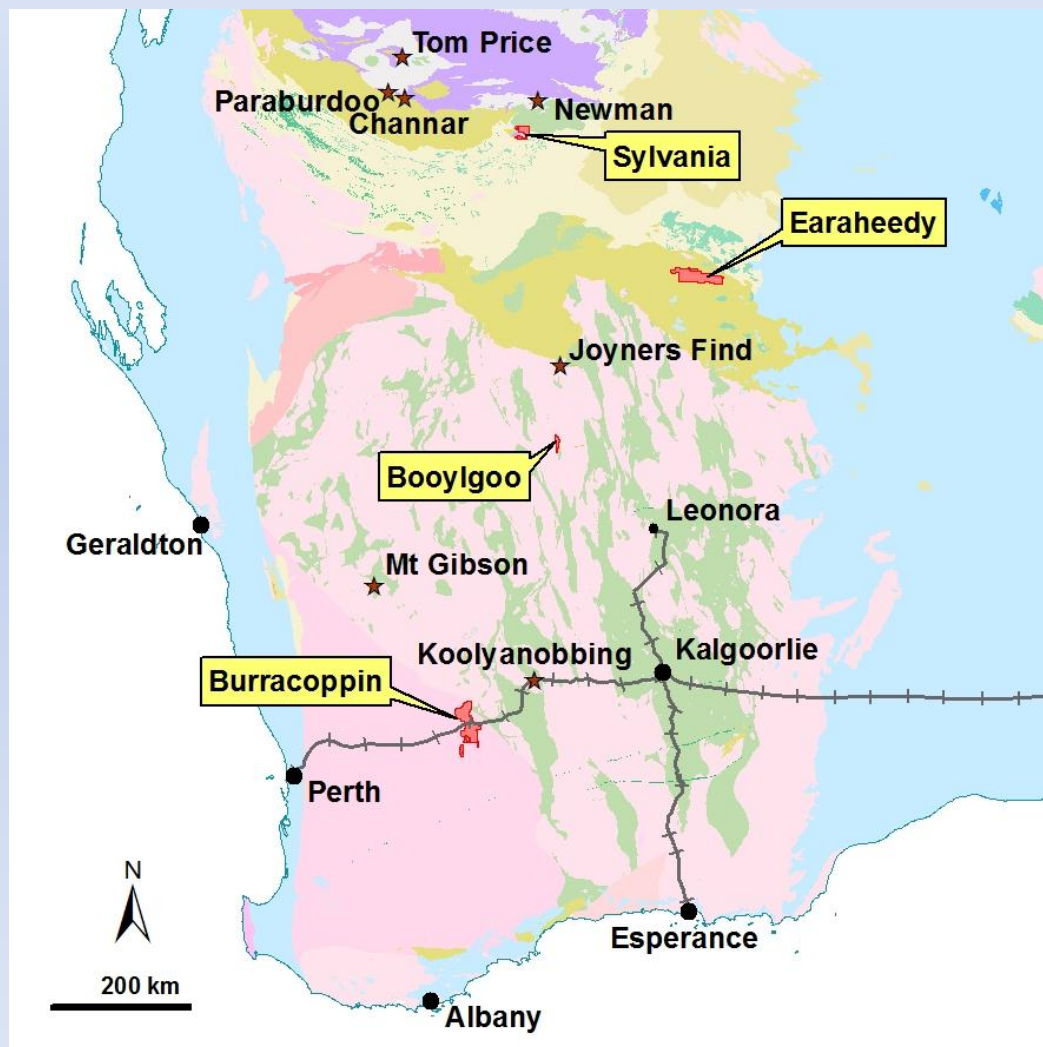
- Yalgoo
- Yalgoo South
- Byro
- Harris Lake
- Ponton
- Darlot

Base Metals

- Doolgunna
- Darlot
- Wattagee
- Yalgoo

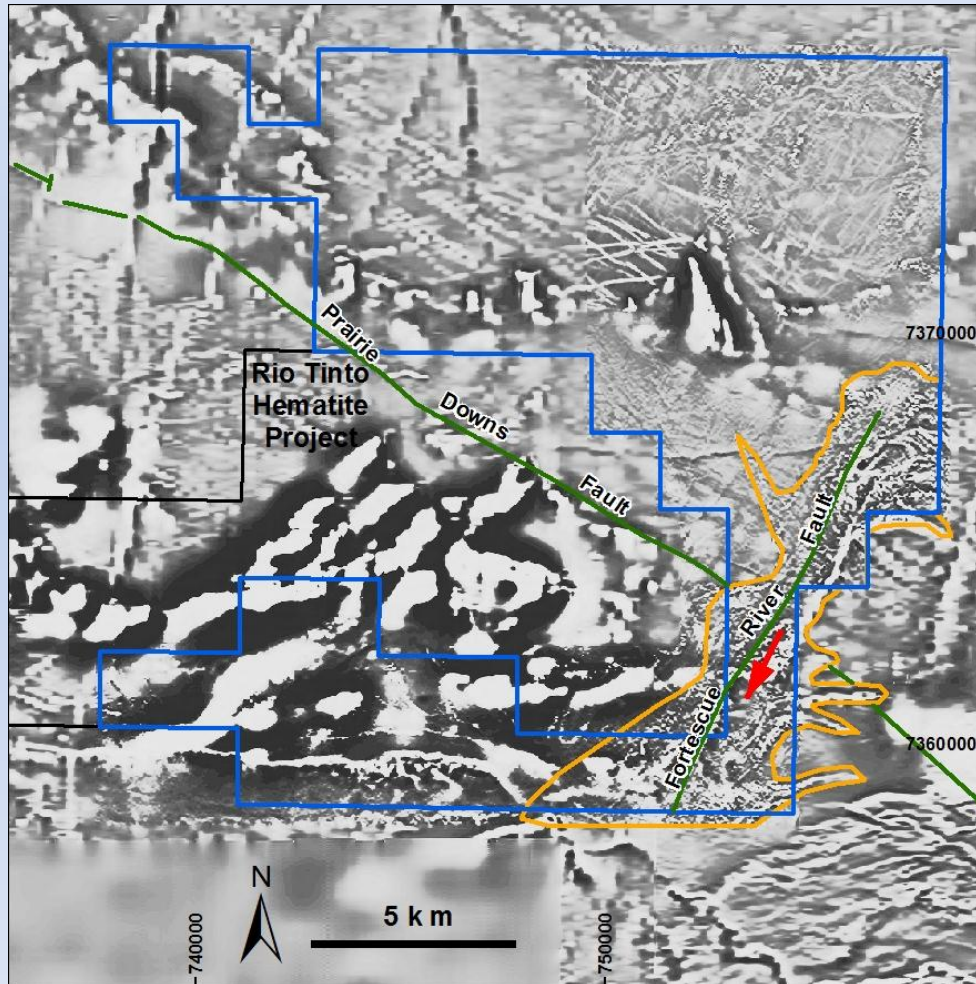


IRON ORE PROJECTS



Massive hematite & goethite outcrop,
Sylvania Project

Sylvania Project



Targets:

1. Proterozoic hematite, "Hamersley style."
2. Channel Iron (CID) or Detrital Iron (DID) on Fortescue River Fault.

2012:

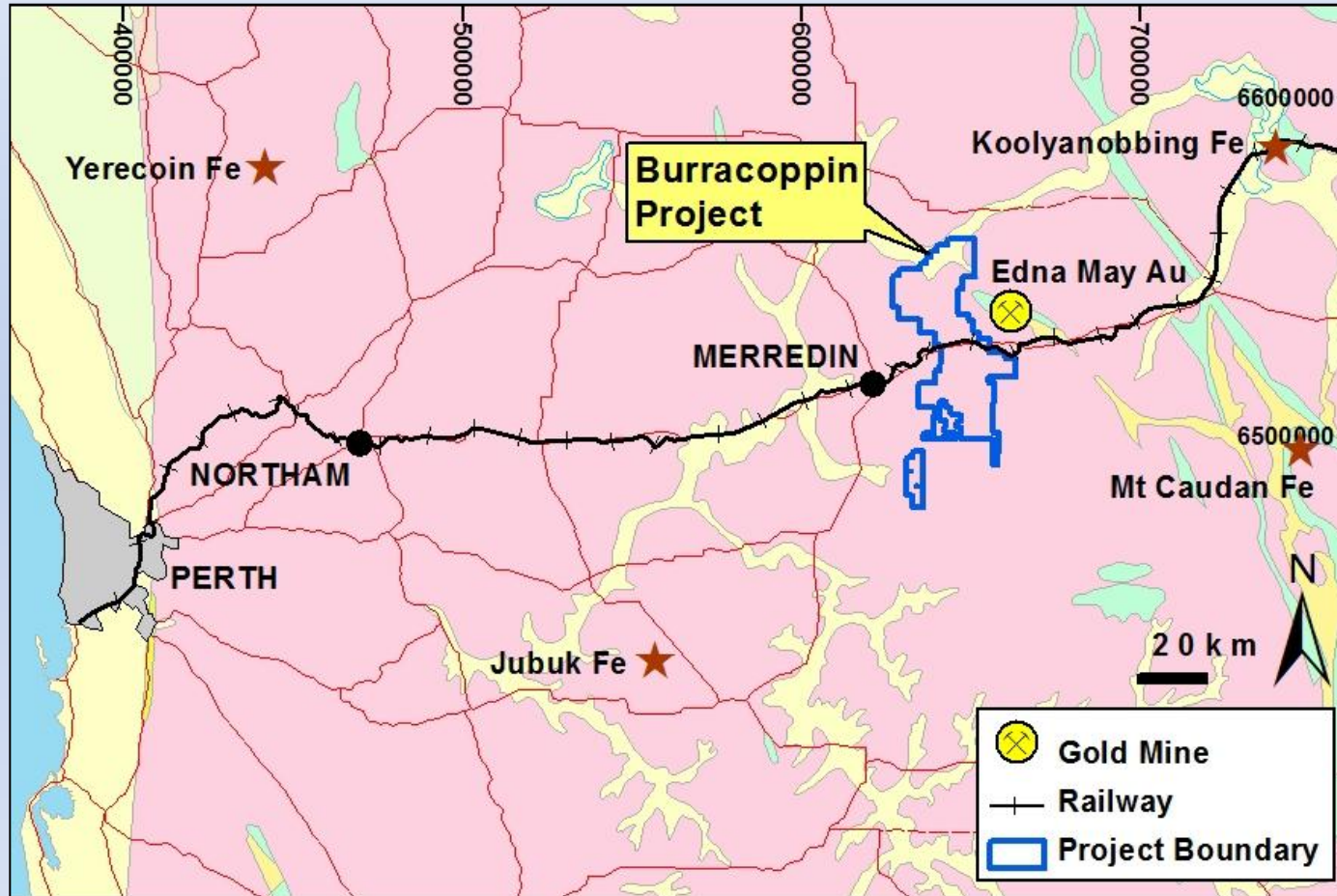
POW approved.

1 Heritage survey completed, 1 awaited.

RC drill test of CID/DID and hematite targets.



Burracoppin Project



Archaean Greenstone belt hosting BIF within gneissic terrane.

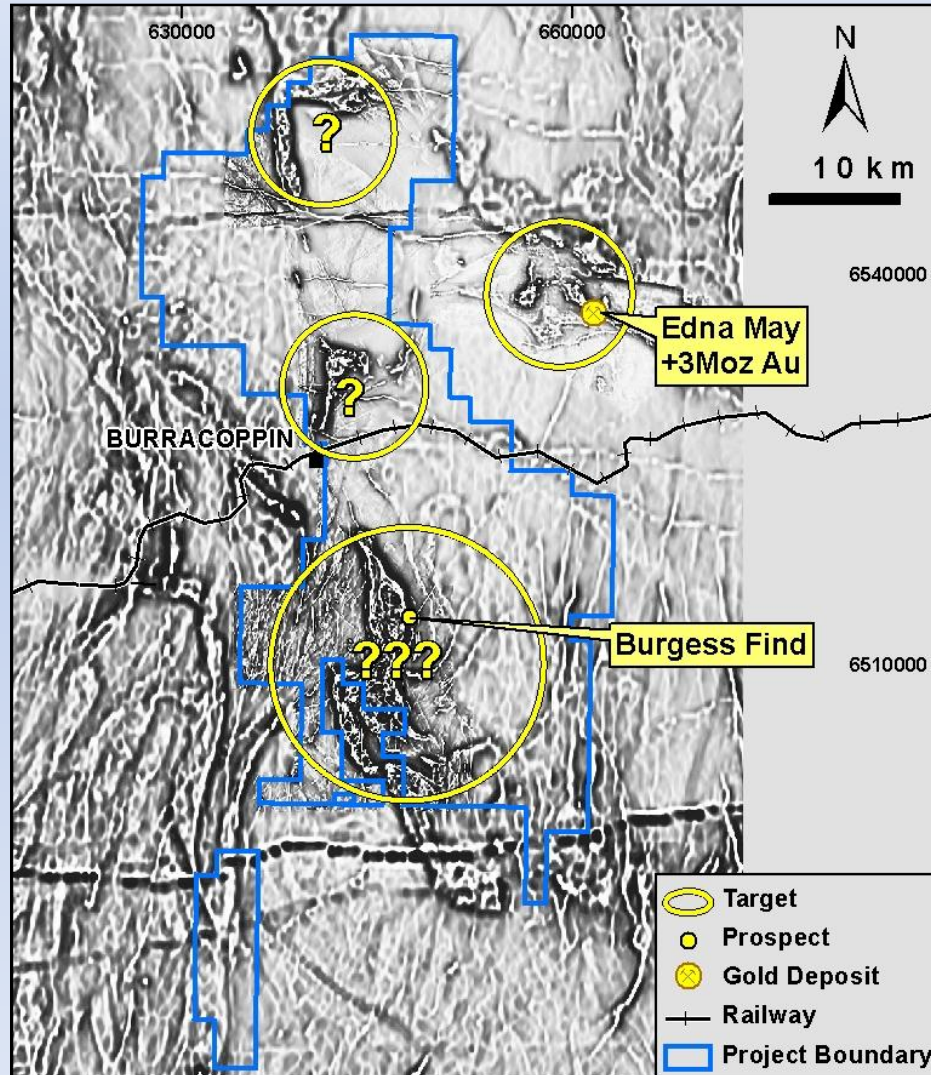
- Heavy duty standard gauge railway, water, power, other services.
- Deepwater ports at Kwinana and Esperance.

Burracoppin Project

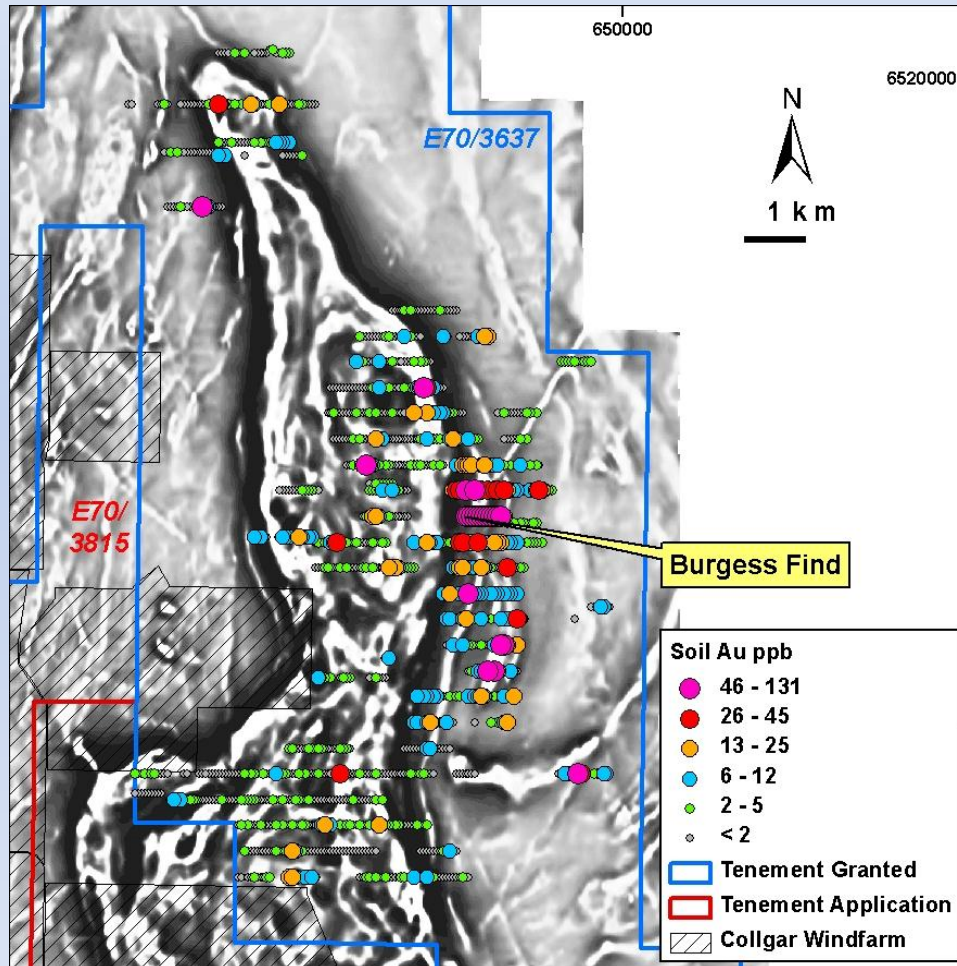


- 50km strike of Archaean “Westonia” greenstone belt (Fe, Au potential)
- Some scattered outcrops of **Bif** and goethite and some hematite scree.
- Same rocks as host Edna May gold mine. (100,000oz pa gold producer)
- Flat, deeply weathered, little outcrop, *“farmers wheat paddocks.”*
- **2011:** RC drill testing gold soil anomalies.
- **2012:** Mapping & drill testing iron & gold targets.

Burracoppin Project



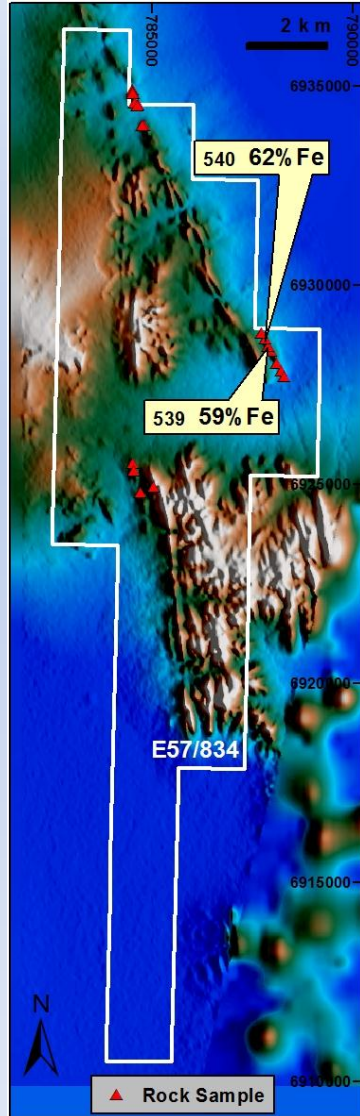
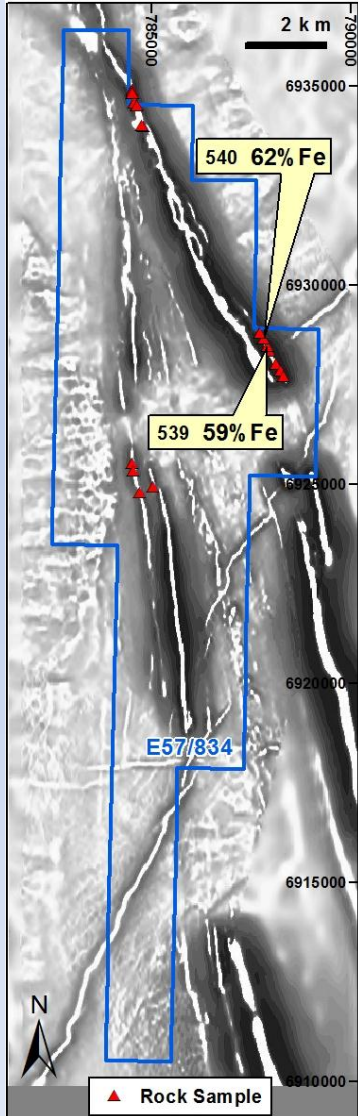
- 100m line spaced aeromagnetic surveys flown by Enterprise.
- 10's km of linear magnetic anomalism defined, some associated with subcropping & mapped Bif.
- Magnetic lows may represent deep weathering & hematite.
- Gold potential at Burgess Find.



Burgess Find Gold Target

- High grade gold in veins at sheared contact between mafic/ultramafic unit to west and gneiss to east.
- Soil sampling indicates gold anomalism over 2km of strike.
- Soil sampling not completed due to transported cover.
- Limited shallow historical RC drilling. (1981-1987)
- **2012:** RC drilling required to adequately test primary zone.

Booylgoo Project

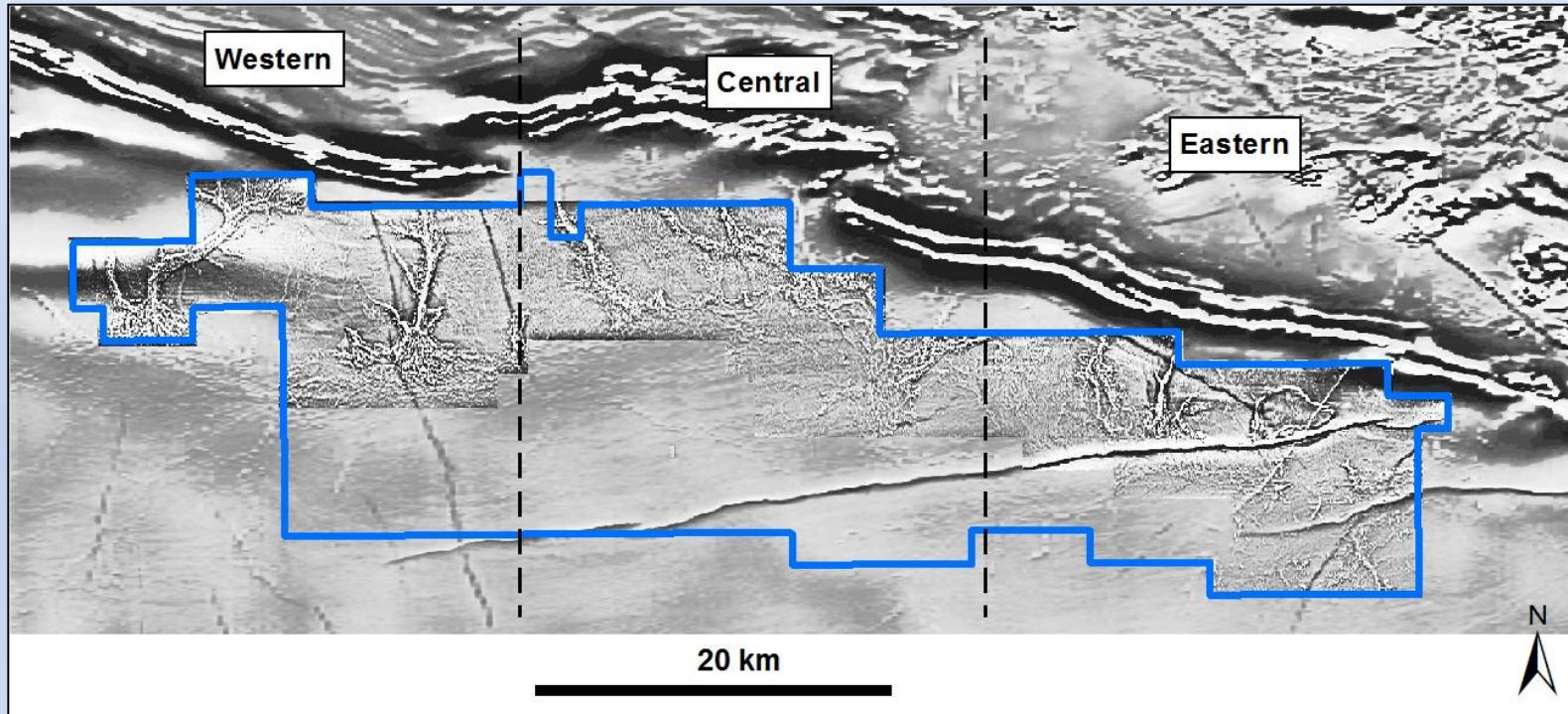


Located south of Golden West Ltd's "Wiluna West" Resource: 127Mt @ 60% Fe.

2012:

- Detailed ENT magnetic/radiometric survey.
- 28km strike magnetic Bif.
- Limited rockchip sampling : grades 25 - 62%Fe.
- Detailed mapping and sampling required to firm up high grade targets.
- RC drilling to test high grade zones.

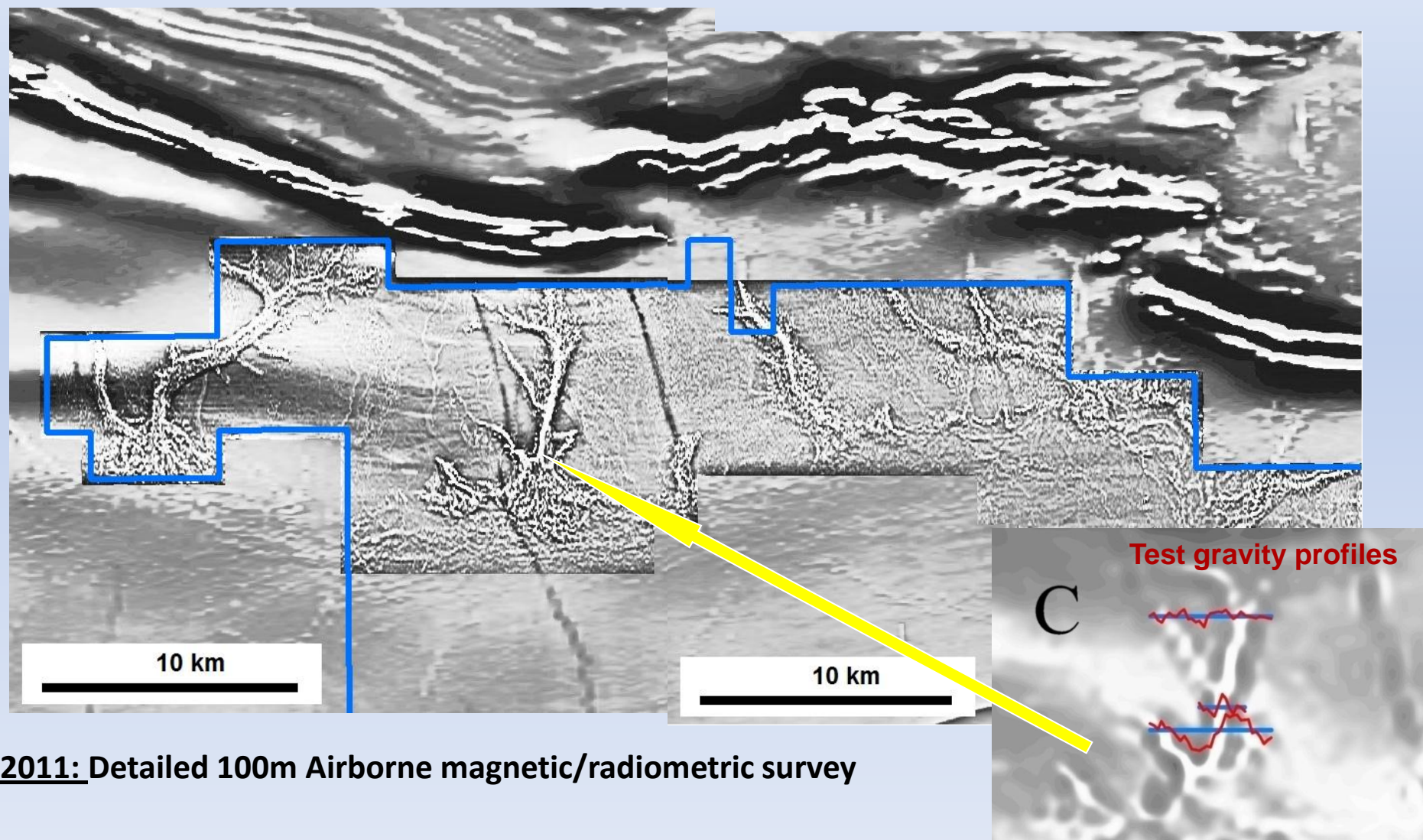
Earaheedy Project



Targets: Channel Iron (CID) & Detrital Iron (DID) deposits (eg Koodaideri like)

- Proterozoic Bif's in Earaheedy/Nabberu Basin. 600sq km, granted April 2011.
- "*Magnetic channels*" - 400m line spaced magnetics suggest CID/DID's present.
- **2011:** 100m Airborne magnetic/radiometric survey flown, confirms channels.
- **2012:** Heritage clearance and RC drilling (April/May?).

Earaheedy Project



2011: Detailed 100m Airborne magnetic/radiometric survey

GOLD & BASE METALS PROJECTS



Doolgunna Heritage Survey



Doolgunna Station – Exploration Basecamp

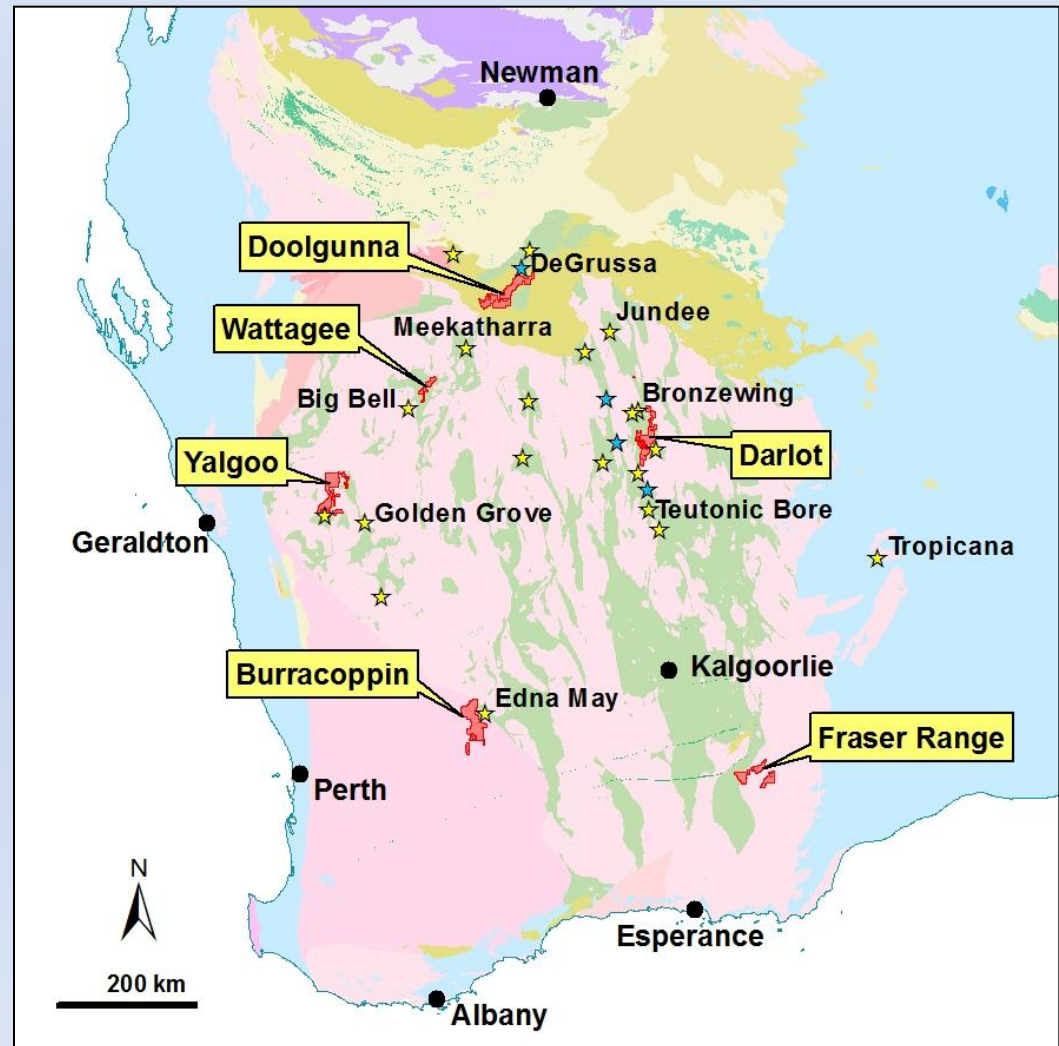
GOLD & BASE METALS STRATEGY

GOLD

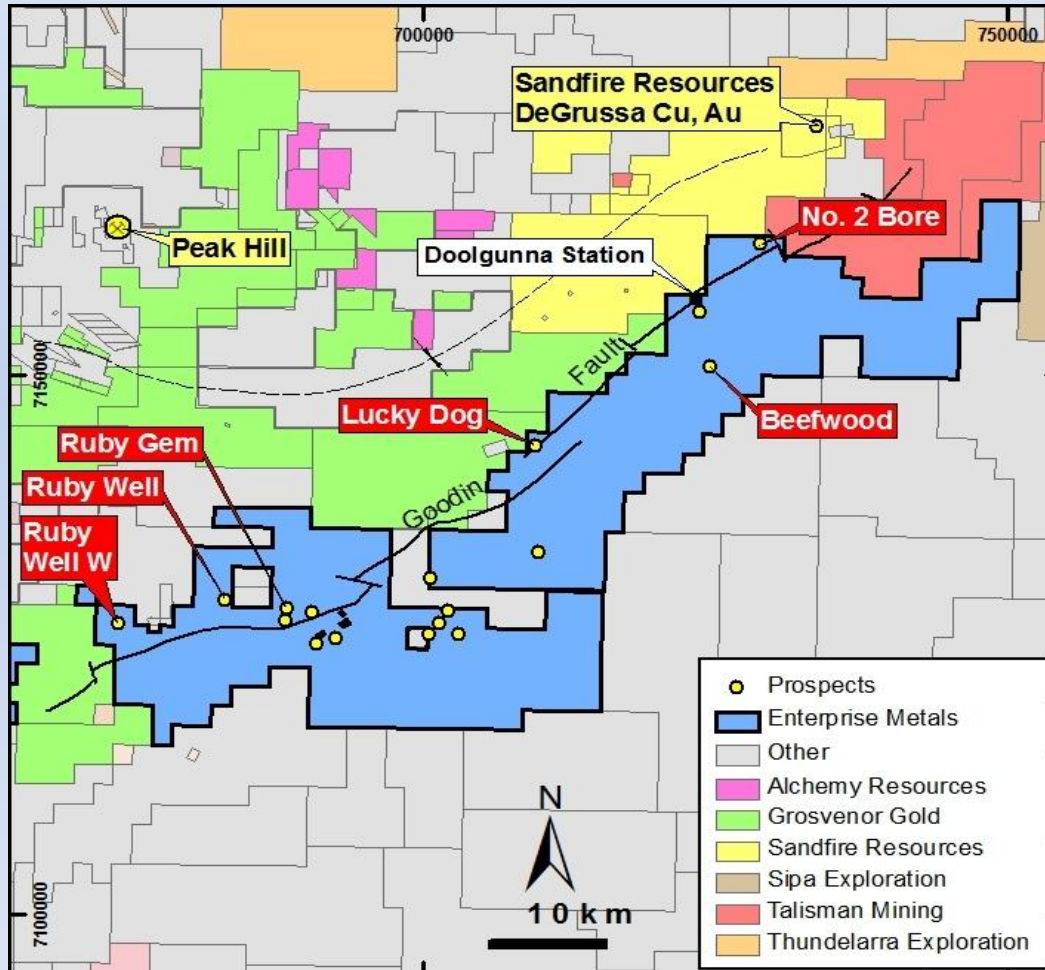
Explore below known oxide gold zones for high grade primary ore, within trucking distance of competitors Mills. Eg. Darlot, Yalgoo, Burracoppin.

BASE METALS

Explore prospective Proterozoic Volcanics and Sediments near De Grussa (VMS and sediment hosted), & Archaean Felsic sequences near Golden Grove and Jaguar-Bentley. (VMS)



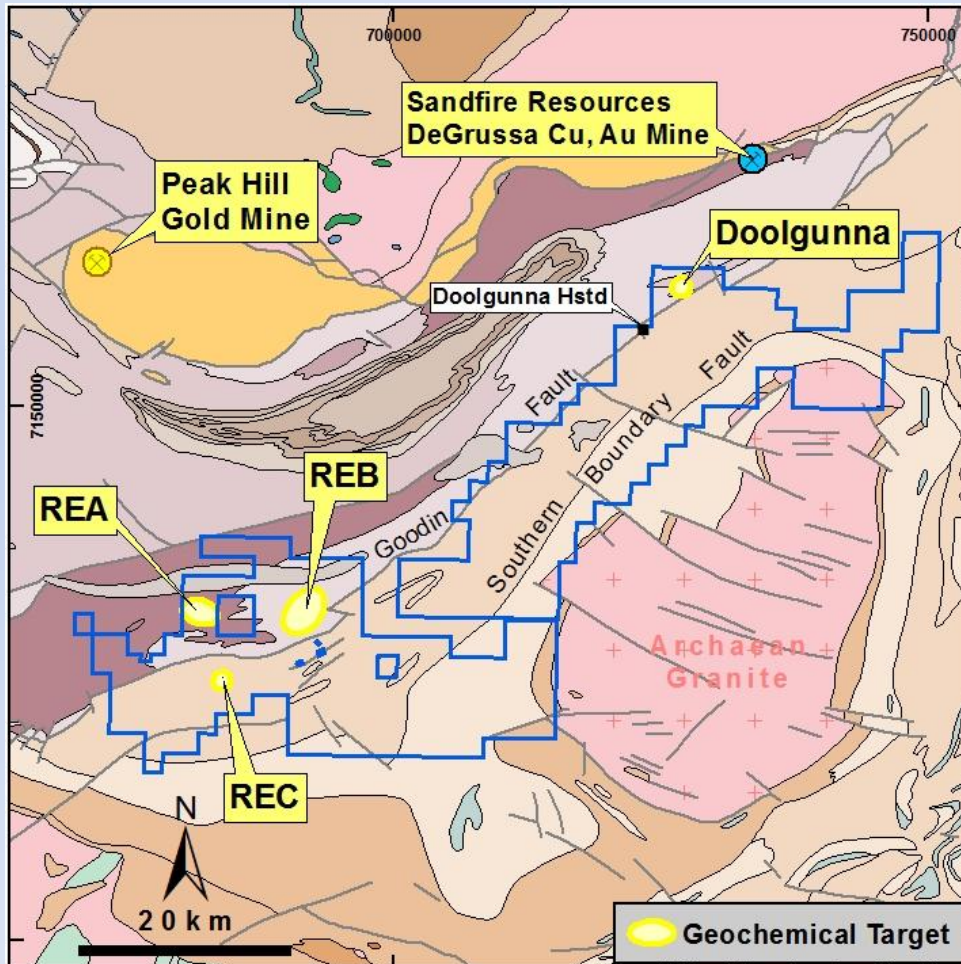
Doolgunna Project - Competitors



Sandfire Resources NL DeGrussa VMS Discovery 2009

- 10.67 million tonnes
- 5.6% Cu
- 1.9g/t Au
- 15g/t Ag
- 600,000 tonnes copper
- 660,000 ounces gold
- 5.1m ounces silver
- Plan Revenue: \$4.2B
- Cashflow (pre-tax): \$2.4B

DOOLGUNNA PROJECT



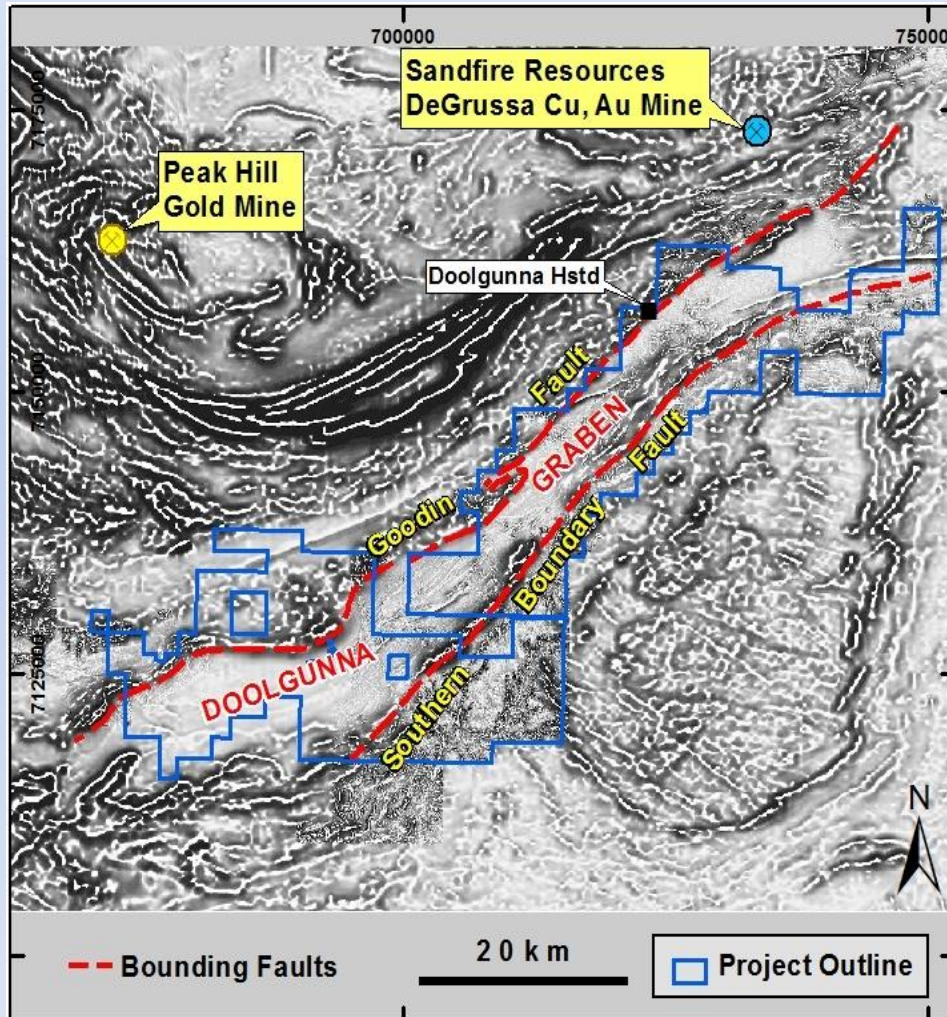
2011:

- Detailed 100m airborne magnetic survey completed.
- RC drilling: 3 soil/IP targets.
- 8m @ 1% Cu along Goodin Fault.

2012:

- Aircore drilling along Goodin Fault & Southern Boundary Fault for oxide Cu “blankets” over primary Cu sulphides.

Doolgunna Project

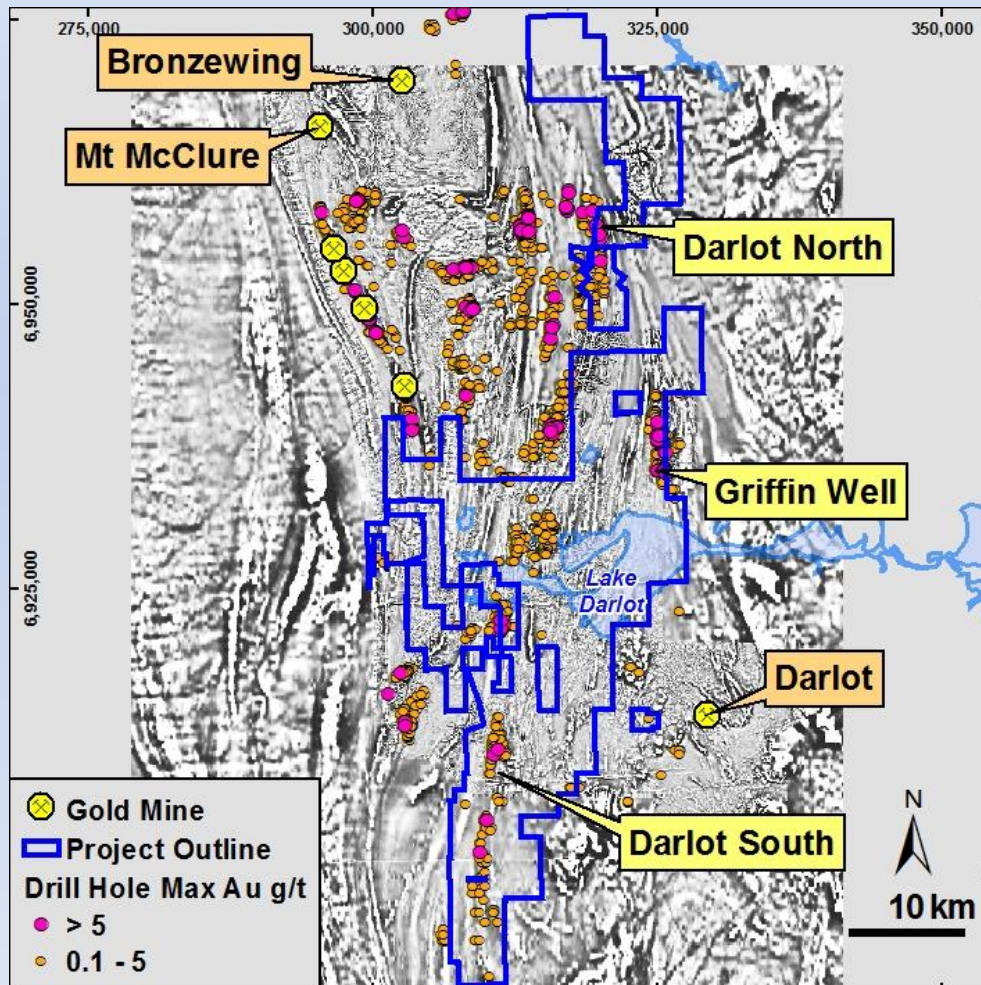


Sediment Hosted Cu(Zn) targets

- “Doolgunna Graben” concept.
- Potential for “Isa” or “Zambian” style massive sulphides along *Southern Boundary Fault* (SBF ~80km).
- Expect deep oxidation (~60-80m) & extensive secondary Cu blankets over primary ore zones.
- **2012:** AC and RC drilling over SBF in areas of magnetic lows at REDOX(?) boundary.

Darlot Project

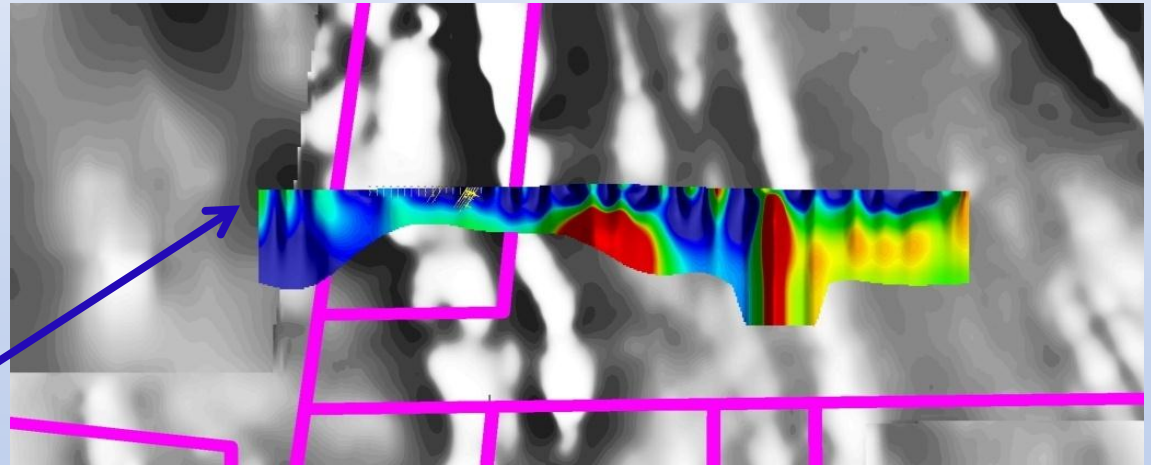
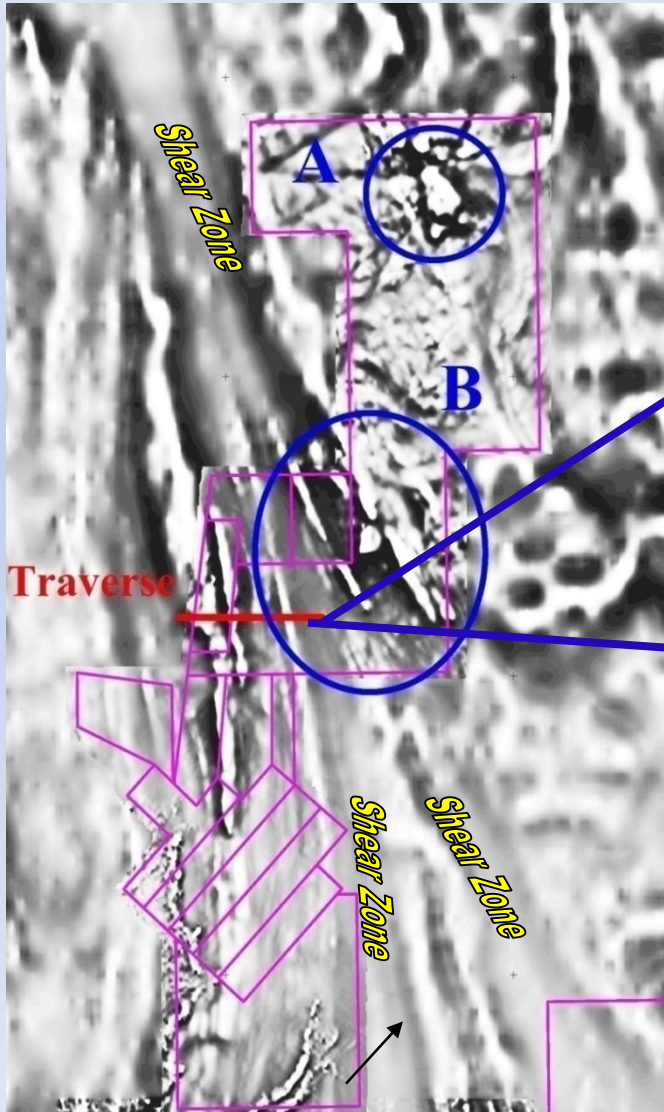
Historic Gold drilling results on magnetics



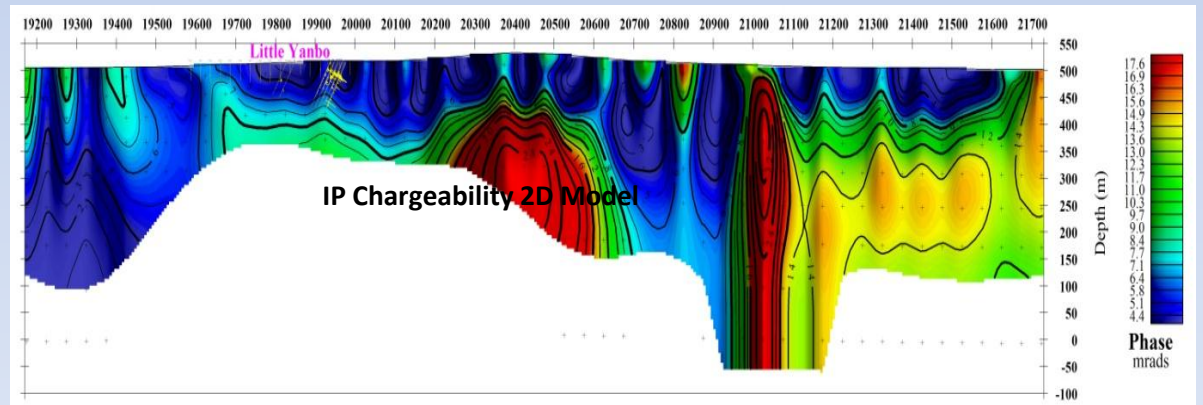
Targets: Archaean Orogenic Au deposit & VMS Cu/Zn deposits

- Excellent gold/base metal targets based on previous RAB drilling & structural interpretation.
- Favourable stratigraphy, under-drilled.
- Hungry mill at Bronzewing.
- IP targets available for drilling, subject to NT heritage clearance.

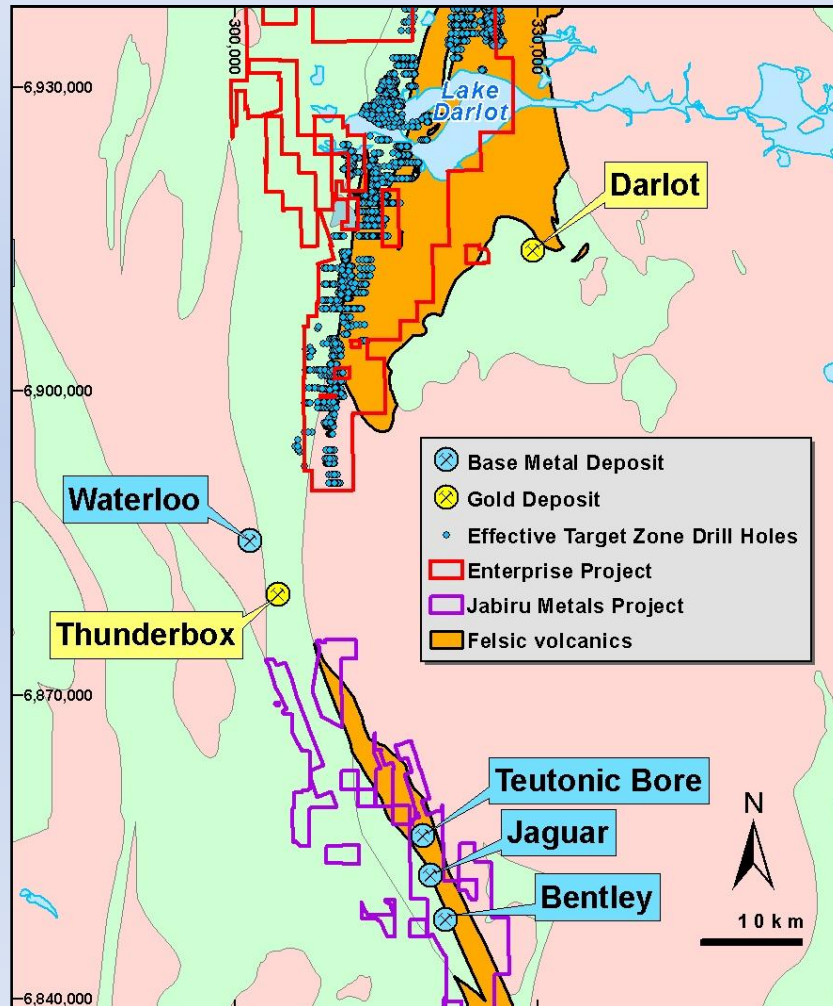
Darlot North



Modelled IP Chargeability Section over 1st VD Magnetic Image



IP Chargeability 2D Model



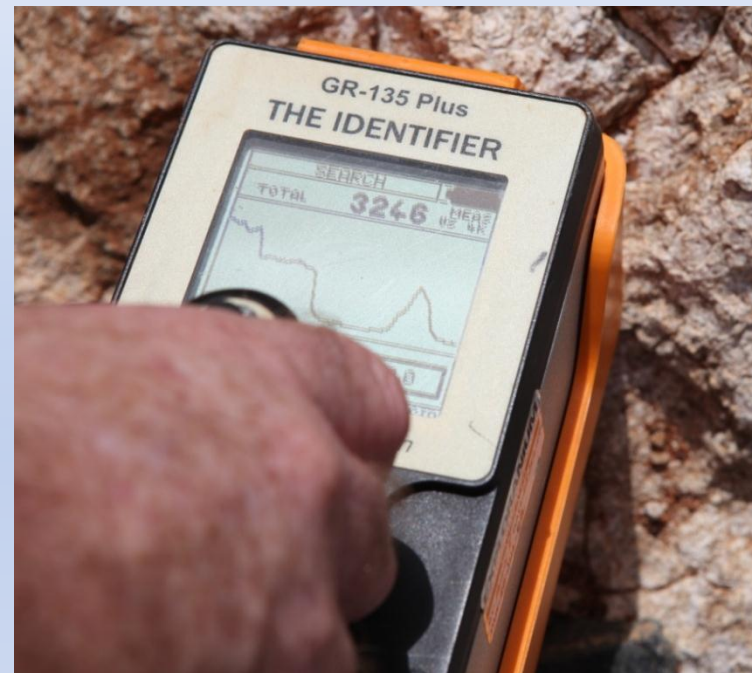
Target: Archaean VMS Cu/Zn deposits

- Volcanics hosting Jaguar and Bentley, present in ENT tenements.
- Area drilled for gold 1980 - 1990's.

2011: Existing drill hole spoil re-sampled for base metals (inc Cd) and alteration minerals associated with expected VMS halo.

- **2012:** Scout RAB/RC drilling

URANIUM PROJECTS



Calcrete outcrops,
Yalgoo Project

URANIUM STRATEGY

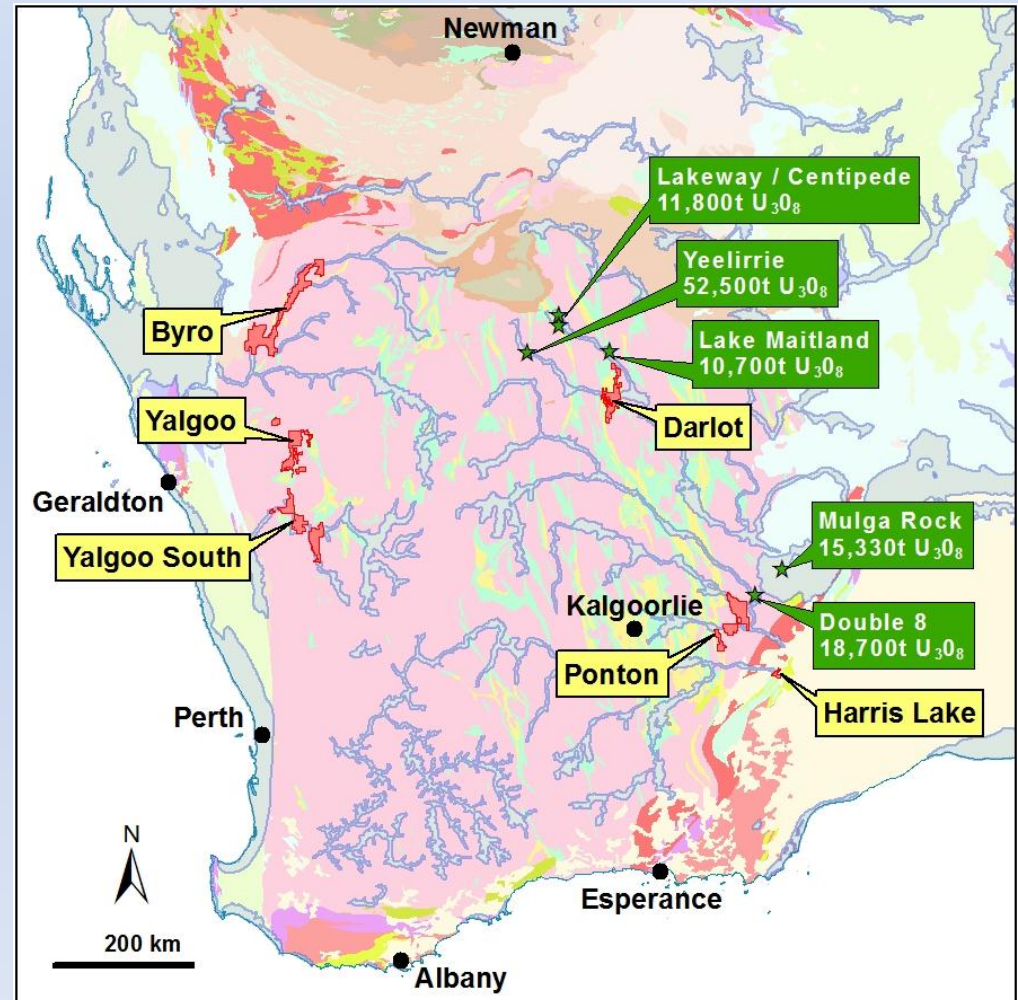
2010/2011:

Airborne mag/rad surveys to identify calcrete or sandstone hosted uranium targets.

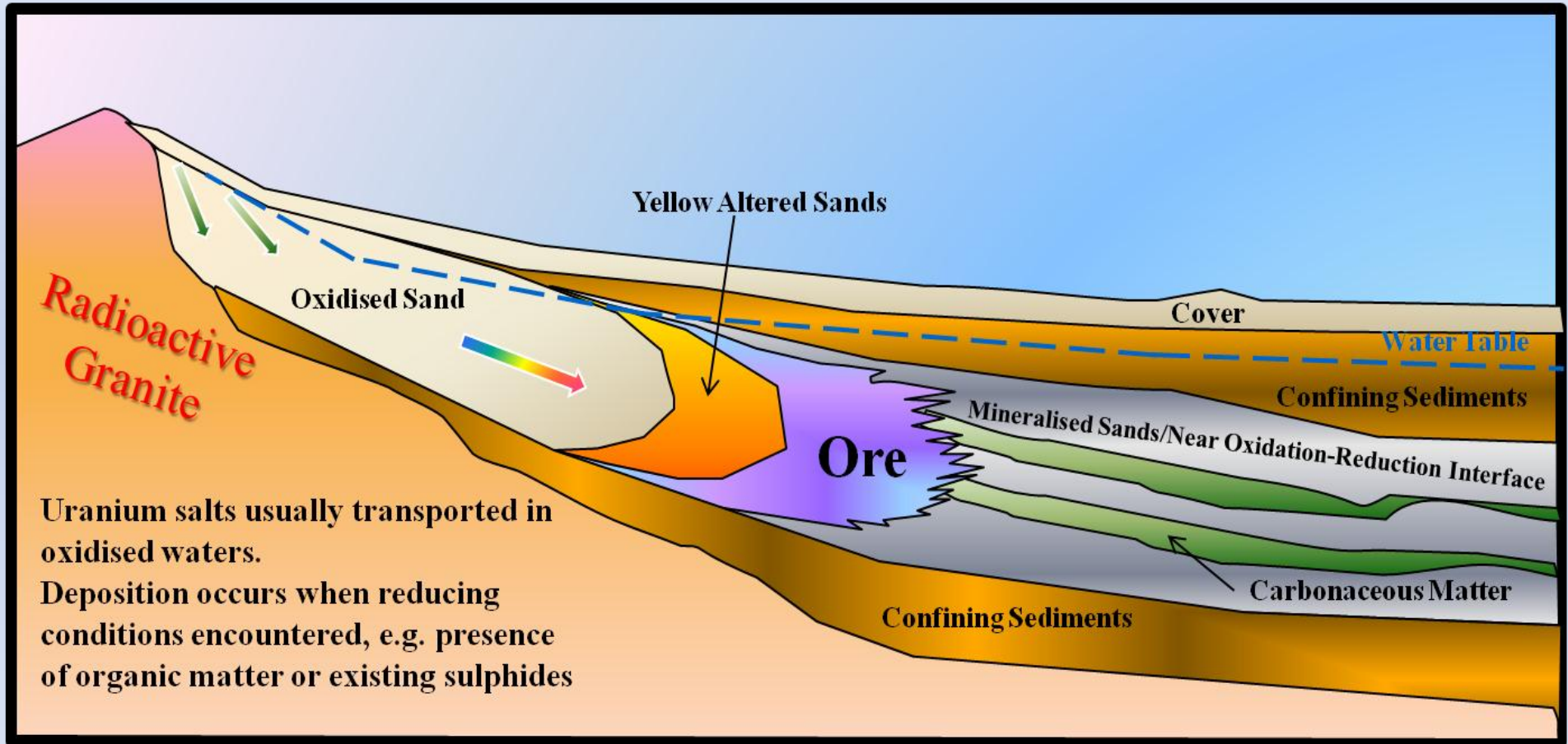
2012:

Plus new targets from Gov't survey at Yalgoo South...

- **Aircore/RC drill testing.**
- **Preparation for IPO.**
- **Cornerstone investor search.**
- **List ENT Uranium on TSX-V.**
- **Continue exploration & evaluation.**

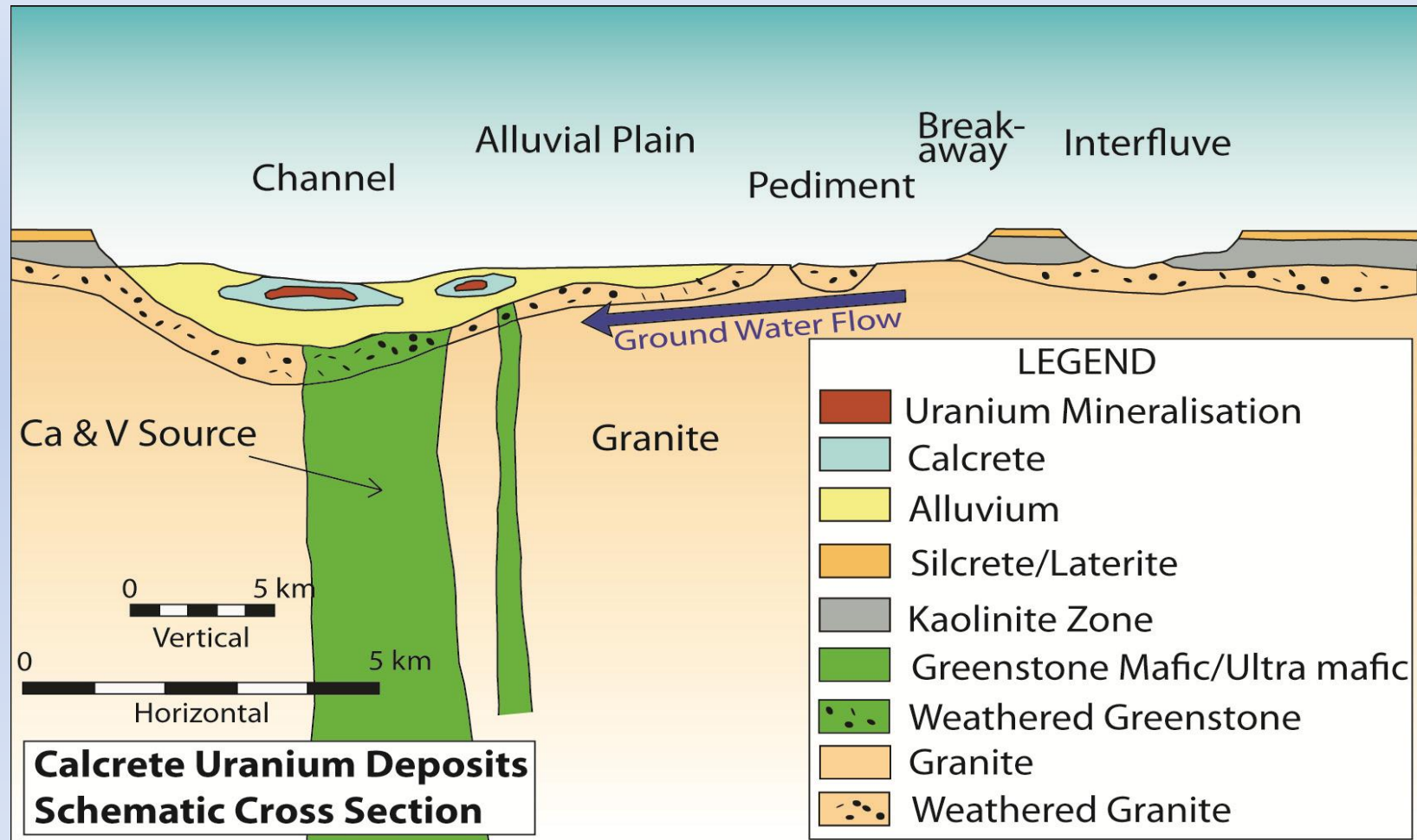


Roll Front Uranium Model



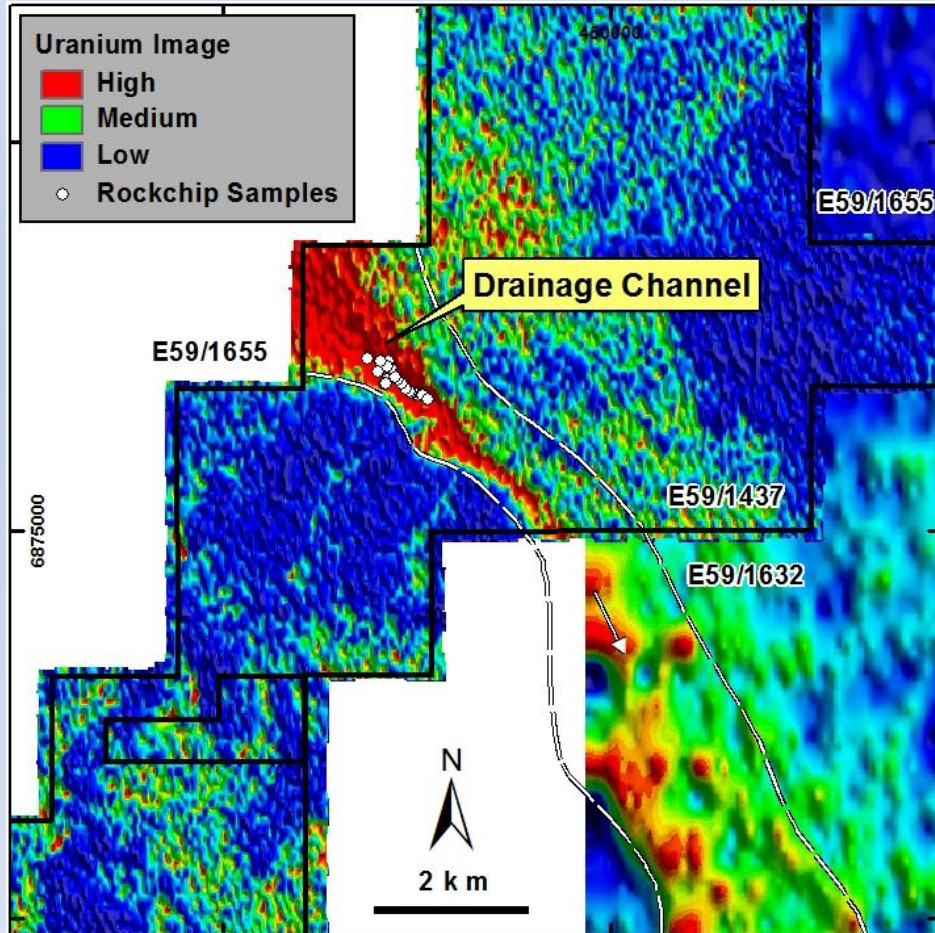
Model for Sand or Sandstone Hosted Uranium deposits

Calcrete Uranium Model



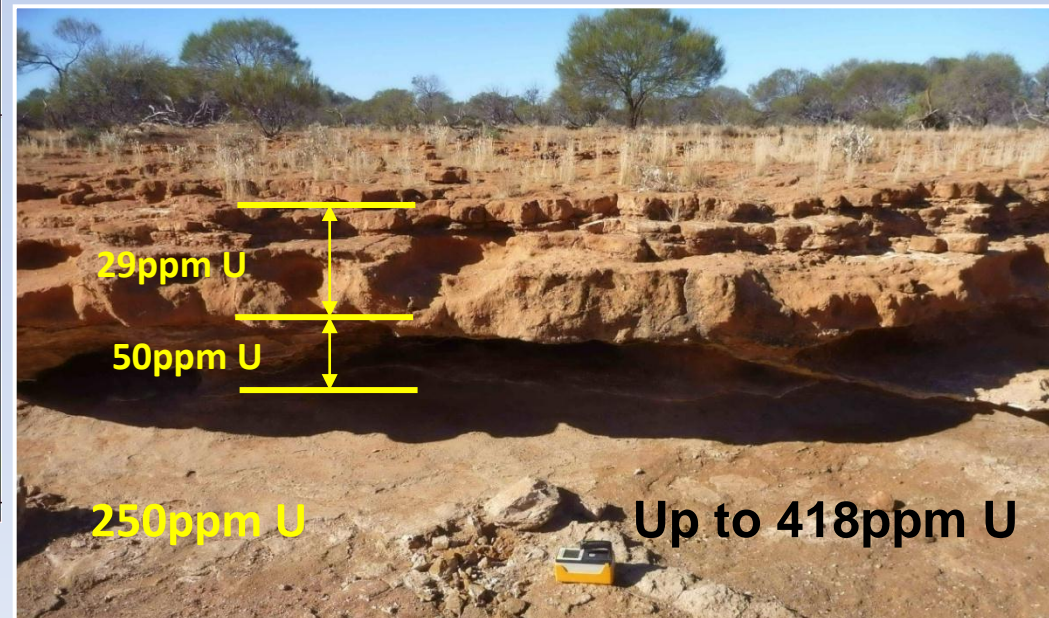
Model for Calcrete Hosted Uranium deposits

Yalgoo Project

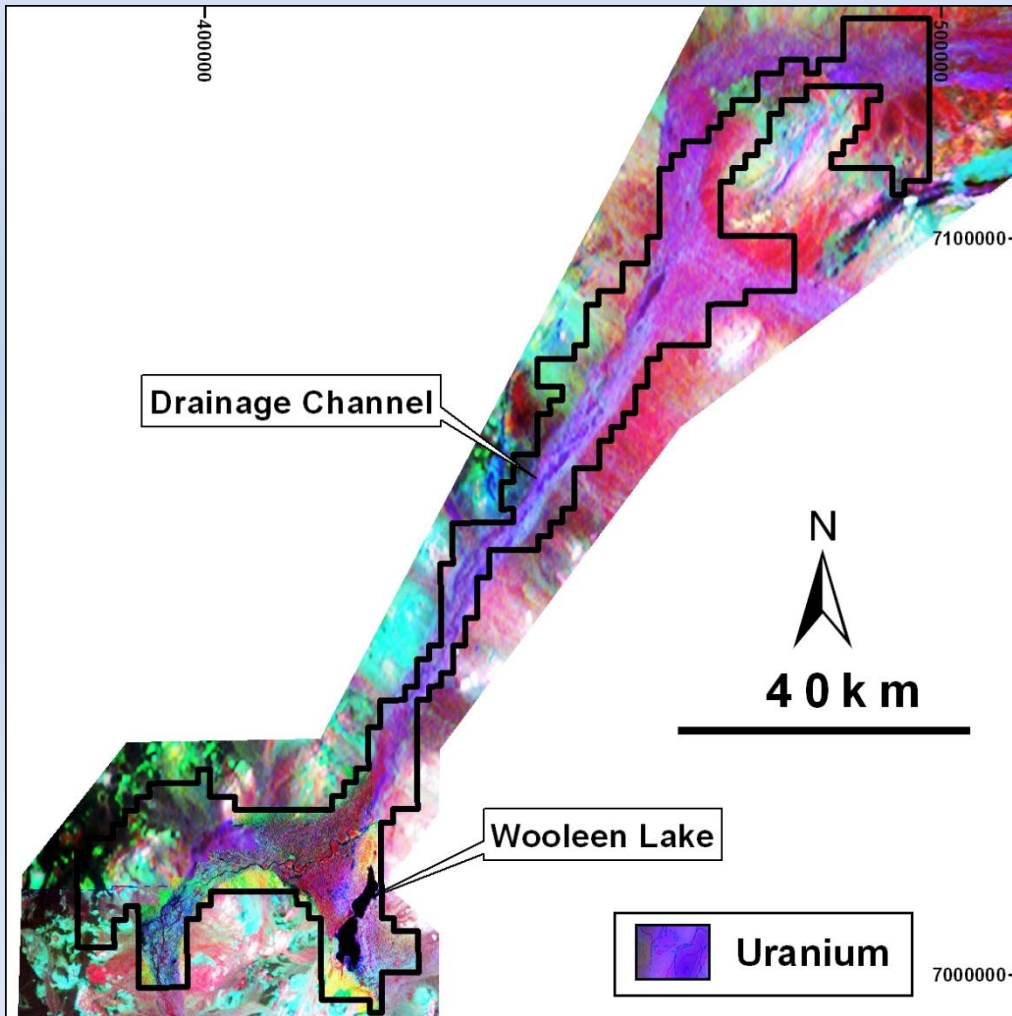


2011: Detailed airborne survey. Heritage Survey completed Nov 2011.

2012: Aircore drill testing. (March)



RGB Radiometric Image



Uranium Targets

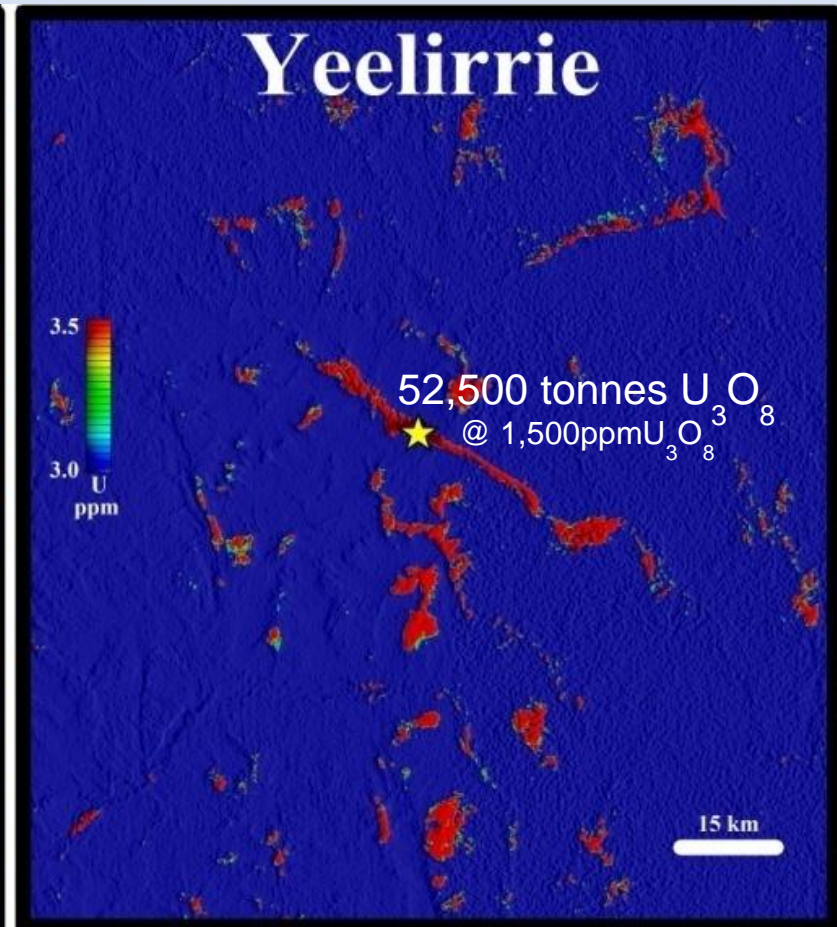
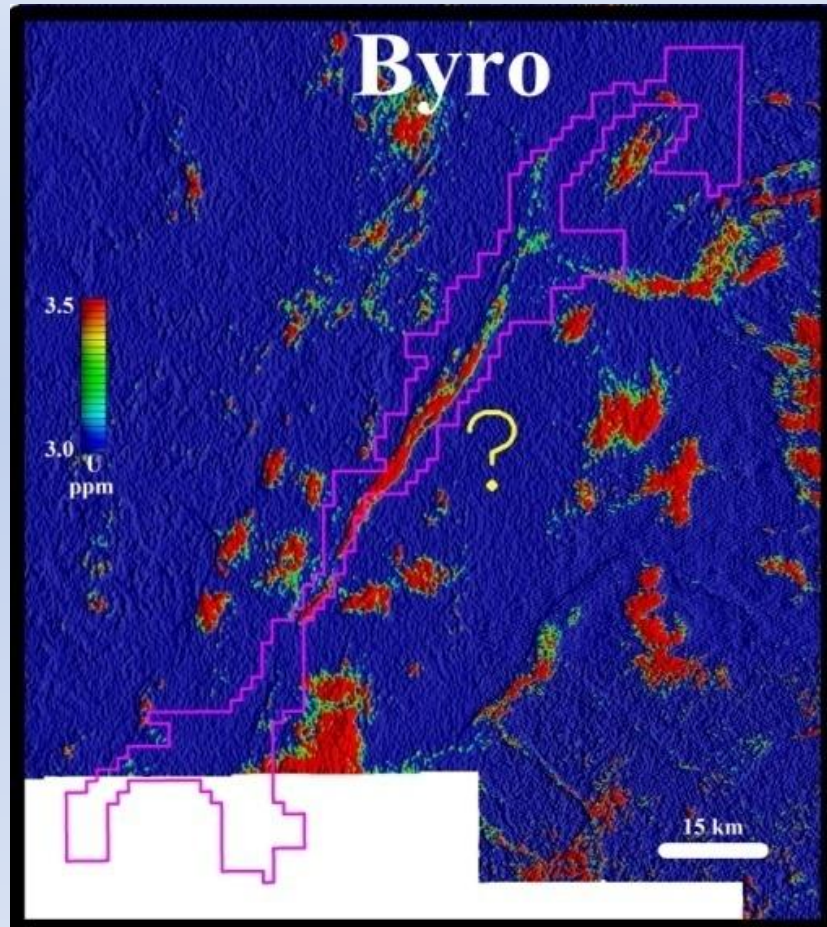
1. Calcrete hosted deposit

- Strong airborne radiometric response in Murchison Channel 170km U anomaly.
- Awaiting grant of tenements.

2. Sandstone hosted deposit

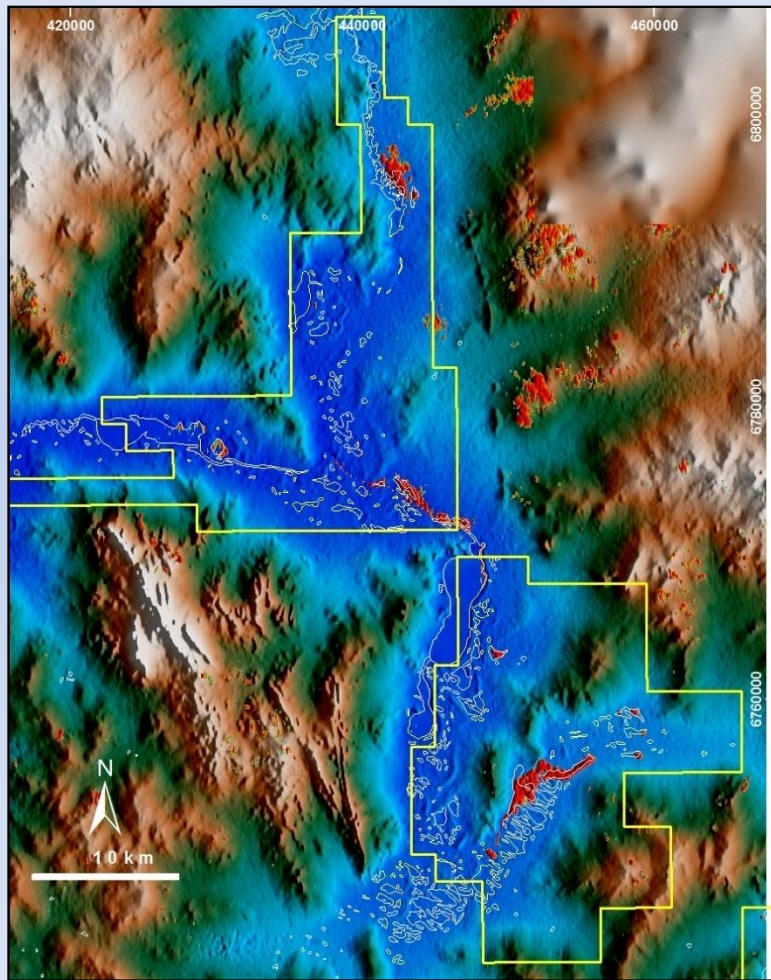
- 2011: 100m Airborne Survey.
- Uranium anomaly west of Wooleen Lake.
- Granted tenement.
- 2012: AC/RC drill testing.

Byro Project



**Strong analogy between Byro and Yeelirrie,
Australia's largest calcrete hosted Uranium deposit**

Yalgoo South Project

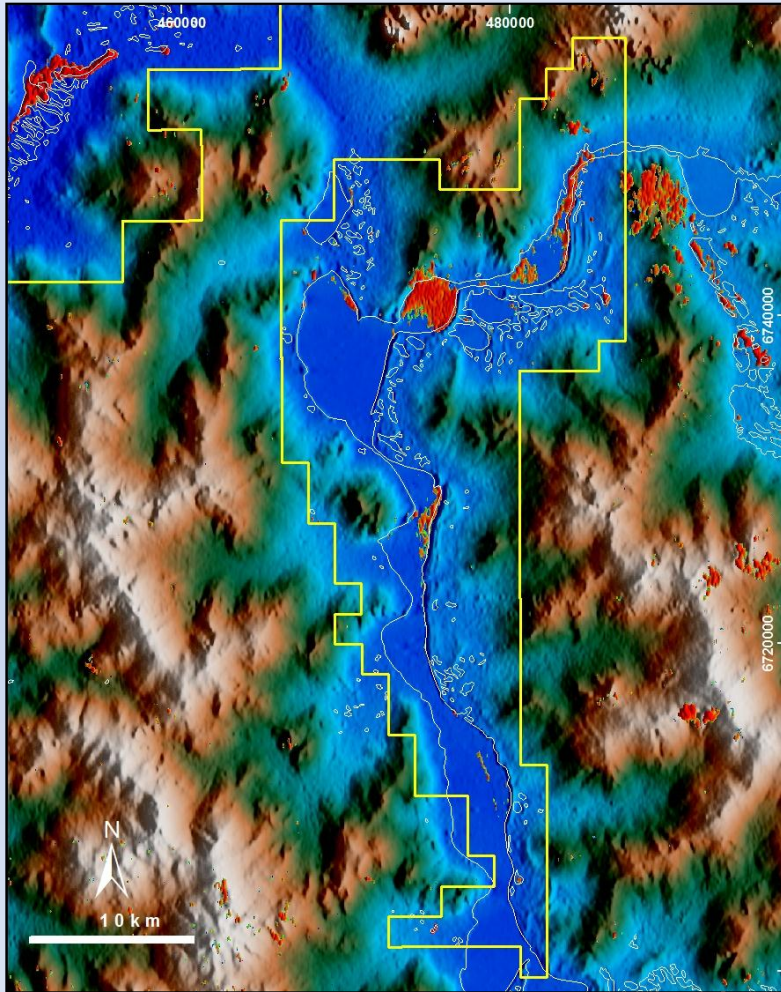


Uranium (Red) over Digital Terrain Image

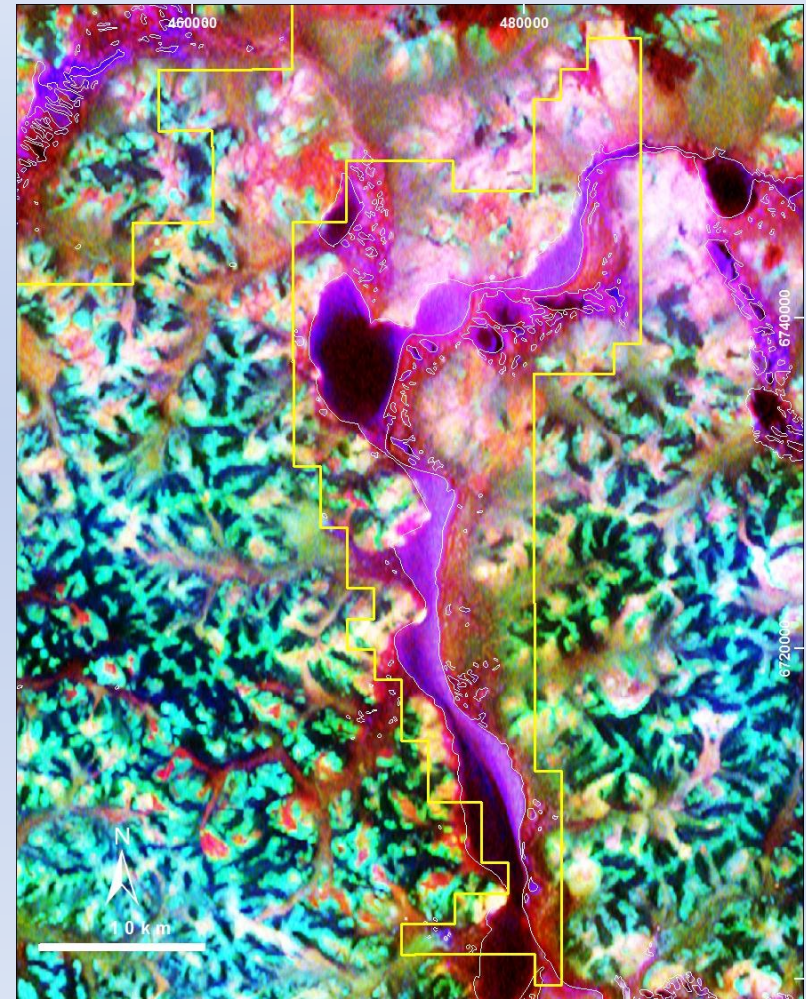


***RGB Radiometric Image
Calcrete Targets (Blue/magenta)***

Yalgoo South Project



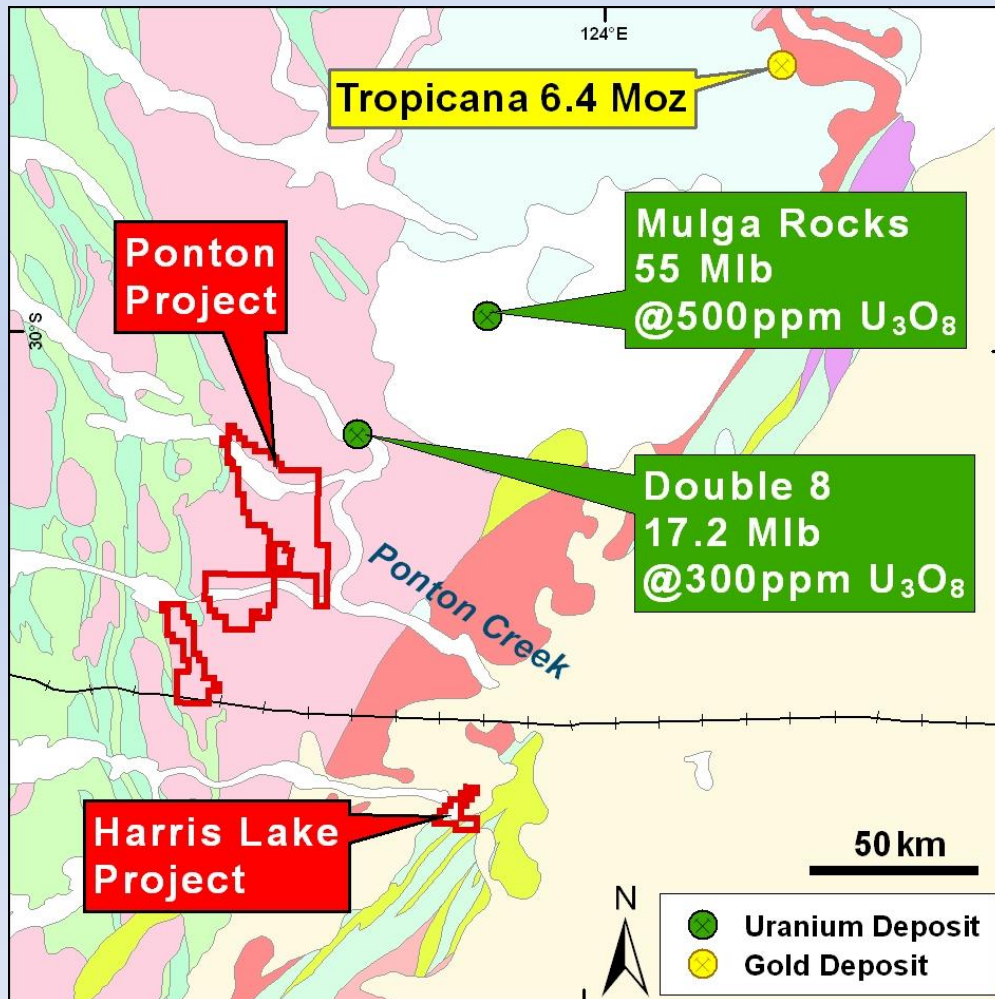
Uranium (Red) over Digital Terrain Image



***RGB Radiometric Image
Calcrete Targets (Blue/magenta)***

Ponton & Harris Lake Projects

Regional Geology

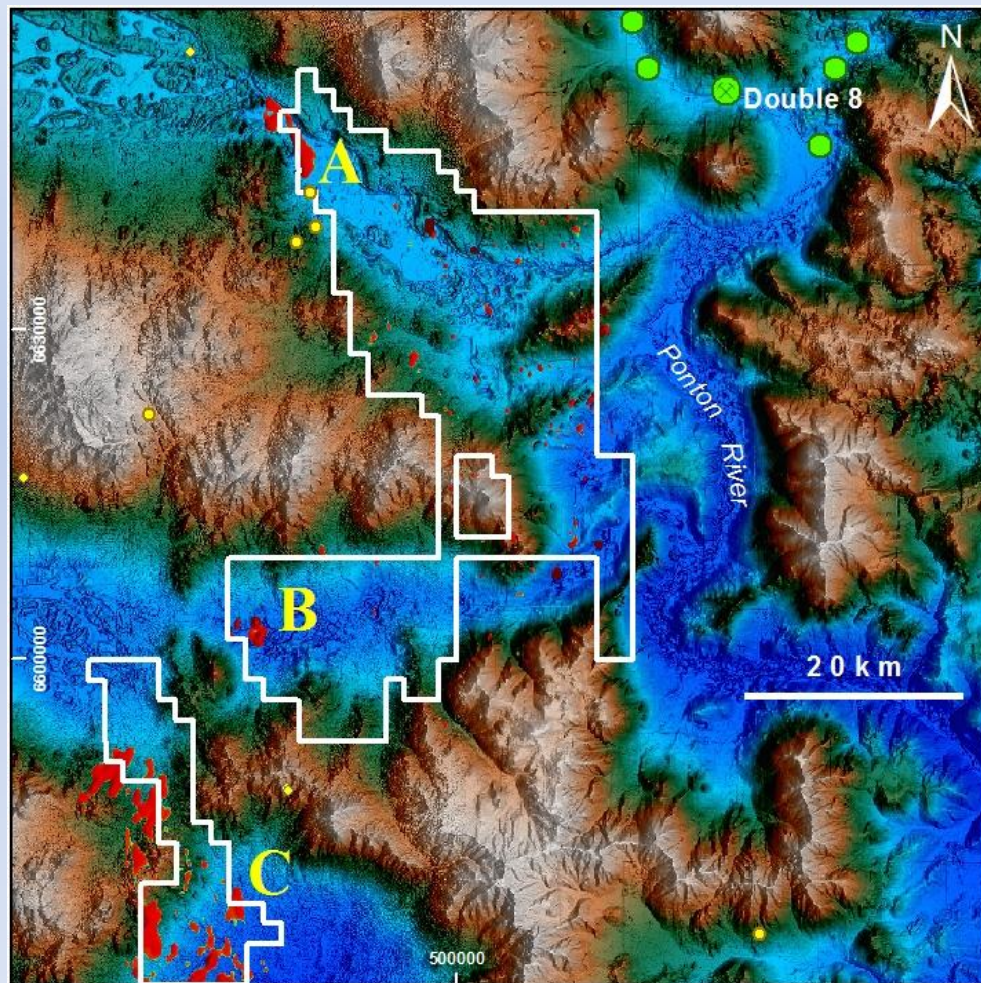


Target:

Sand or Sandstone hosted uranium deposits

- Strong airborne radiometric responses associated with channel & lake sediments.
- Proven Uranium district.
- **2012:**
- Scout Aircore/RC drilling.

Ponton Project



Uranium (Red) over Digital Terrain Image

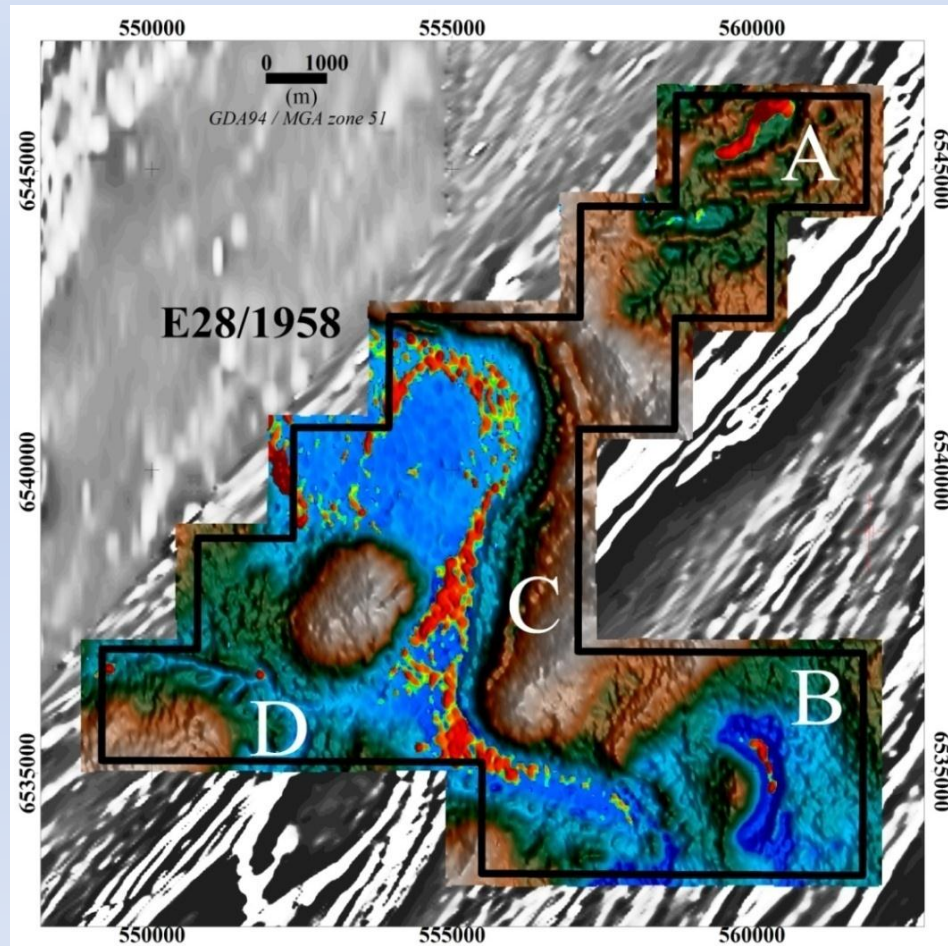
2012 Drill Targets:

Target A: Lake Rebecca.

Target B: Lake Yindana.

Target C: Lake Roe.

Harris Lake Project



Uranium (Red) over Digital Terrain Image

2012 Drill Targets:

Target A: Strong discrete elongate (1,500m x 200m) uranium response.

Target B: Coincident with an isolated “oxbow” off main drainage. Discrete (1,000m x 150m) uranium response.

Target C: Main anomalous uranium response, 10km long.

Target D: EW trending tributary, possibly masked by water in the drainage.

Reporting of Exploration Results



The information in this presentation that relates to Exploration Results, Mineral Resources or Ore Reserves is based on information compiled by Dermot Ryan, a Fellow of the Australasian Institute of Mining & Metallurgy. Dermot Ryan is a Director of the Company and a geological consultant to it through XServ Pty Ltd.

Dermot Ryan has sufficient experience which is relevant to the style of mineralisation and type of deposit under consideration and to the activity which he is undertaking to qualify as a 'Competent Person' as defined in the 2004 Edition of the 'Australian Code for Reporting of Exploration Results, Mineral Resources and Ore Reserves'. Dermot Ryan consents to the inclusion in this report of the matters based on his information in the form and context in which it appears.