

Enterprise's Uranium Projects



**Australian Uranium Conference
Fremantle WA
18 July 2012**



Disclaimer

This document has been prepared by Enterprise Metals Ltd (“Enterprise” or “the Company”) to provide an update on the Company’s Uranium Projects to investors and potential new shareholders. This presentation should be read in conjunction with other public announcements and reports (including financial reports and disclosure documents) released by Enterprise. Any statements, opinions, projections, forecasts or other material contained in this document do not constitute any commitments, representations or warranties by Enterprise and associated entities or its directors, agents and employees. Except as required by law, and only to the extent so required, directors, agents and employees of Enterprise shall in no way be liable to any person or body for any loss, claim, demand, damages, costs or expenses of whatsoever nature arising in any way out of, or in connection with, the information contained in the document. This document includes certain statements, opinions, projections, forecasts and other material, which reflect various assumptions. The assumptions may or may not prove to be correct. Recipients of the document must make their own independent investigations, consideration and evaluation of the opportunity to invest in the Company. By accepting this document the recipient agrees that if it proceeds further with its investigations, consideration or evaluation of the opportunity to invest in the Company it shall make and rely solely upon its own investigations and inquiries and will not in any way rely upon the document.

ENTERPRISE METALS LTD



Issued Capital **213.22 million shares**

Share price **\$0.12 (close 17 July 2012)**

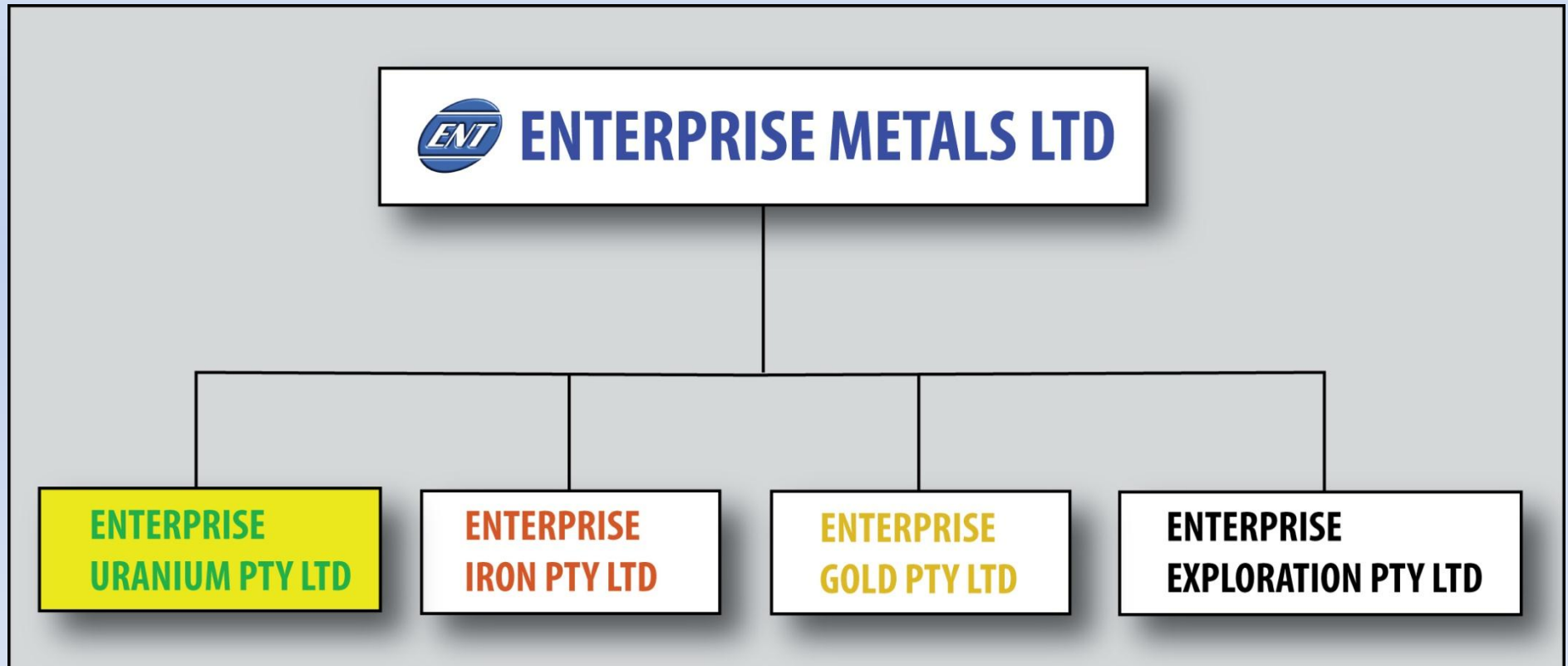
Market Capitalisation **\$25.6 million**

Cash at bank **\$10.8 million @ 11 July 2012**

Listed & Unlisted Options **84.0 million @ 25 cents (11/2012 - 7/2014)**
2.5 million @ 50 cents

- Major Shareholder SinoTech **72.0 million shares (33.7%)**

STRUCTURE



DIRECTORS



Dr. Jingbin Wang BSc, MSc, PhD - Chairman (Non-Executive)

- Geologist with 26 years multi-commodity, multi-national experience

Dermot Ryan BApSc (Geo), FAusIMM, CP (Geo) - Managing Director

- Geologist with 34 years multi-commodity experience

Paul Hallam BE Mining (Hons), FAusIMM, FAICD - Director (Non-Executive)

- Mining engineer/operations director, 34 years multi-commodity experience.

**Dr. Allan Trench BSc Geo (Hons) PhD (Geophysics) MSc (Mineral Economics)
MBA (Oxon) MAusIMM, MAICD - Director (Non-Executive)**

- Geophysicist/geologist, mineral economist, management consultant.

Bruce Hawley BE Chem (Hons), FAusIMM, CP (Mgn't) - Director (Non-Executive)

- Chemical engineer/project manager, 36 years experience in mining projects

Anna Mao MBA - Director (Non-Executive)

- MBA from Richard Ivey Business School of Western Ontario University

Dr. Zhen Huang BSc, MSc, PhD - Director (Non-Executive)

- Geologist with 29 years multi-commodity, multi-national experience

Dennis Wilkins: Company Secretary & CFO

EXPLORATION PACT – OUR STRATEGY

People:

- Well skilled, trained & rewarded people.

Area Focus:

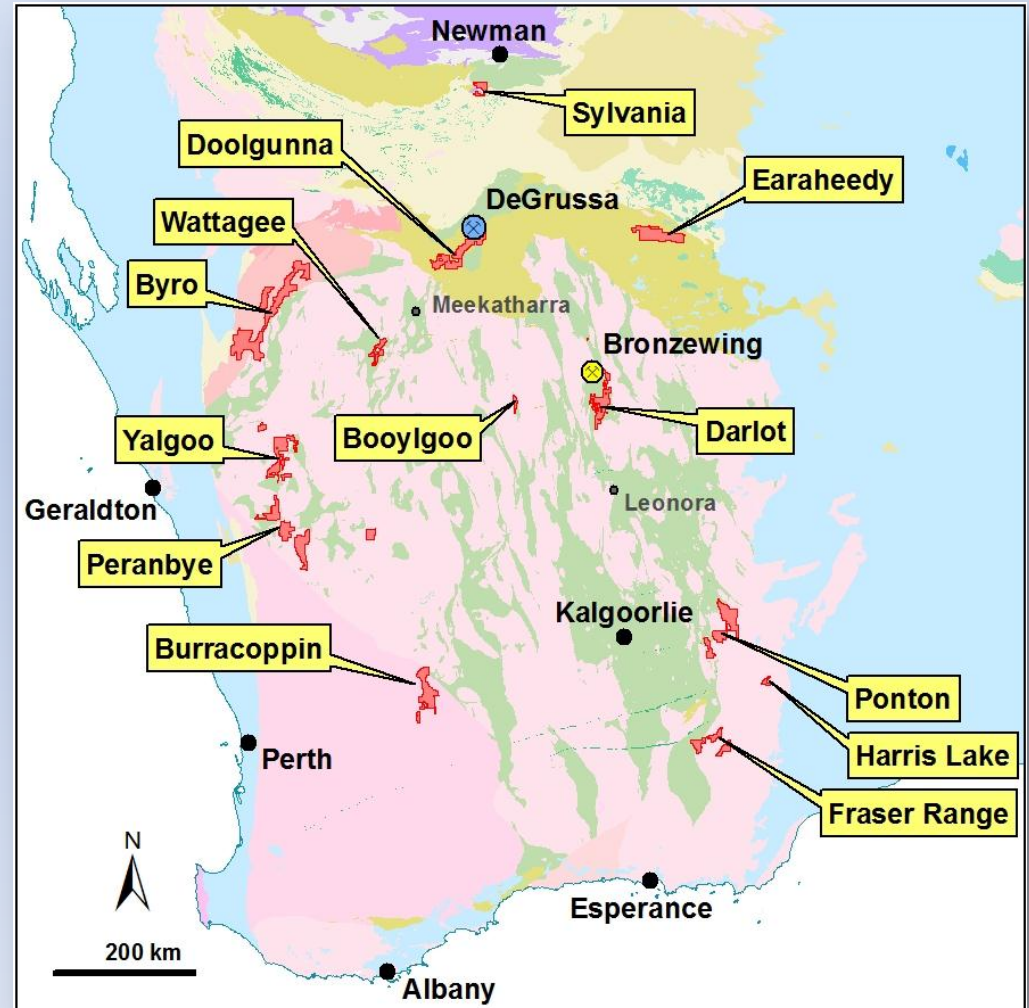
- Yilgarn Craton & surrounding Proterozoic Basins & Orogenic Zones.
- Infrastructure rich areas.

Commodity Focus:

- Uranium, iron ore, gold & basemetals.

Technology:

- Exploit advances in understanding of regolith & airborne geophysics.



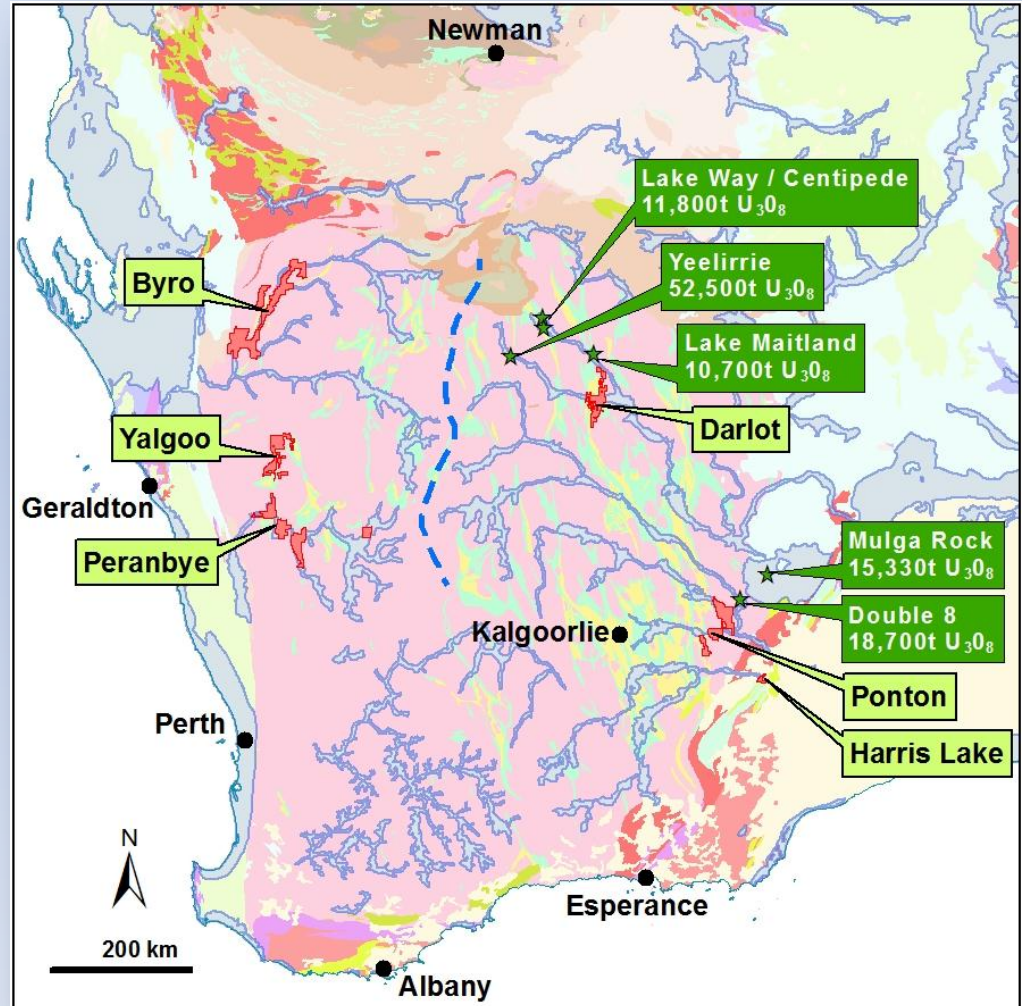
URANIUM STRATEGY

2010/2011:

- Greenfields. ✓
- Brownfields. ✗
- Airborne mag/rad surveys for calcrete & sand hosted uranium
- Proprietary & Government.

2012:

- New targets from Gov't surveys.
- ENT AEM surveys (completed).
- Aircore/RC drilling.
- Continue exploration.
- Consider IPO of uranium assets

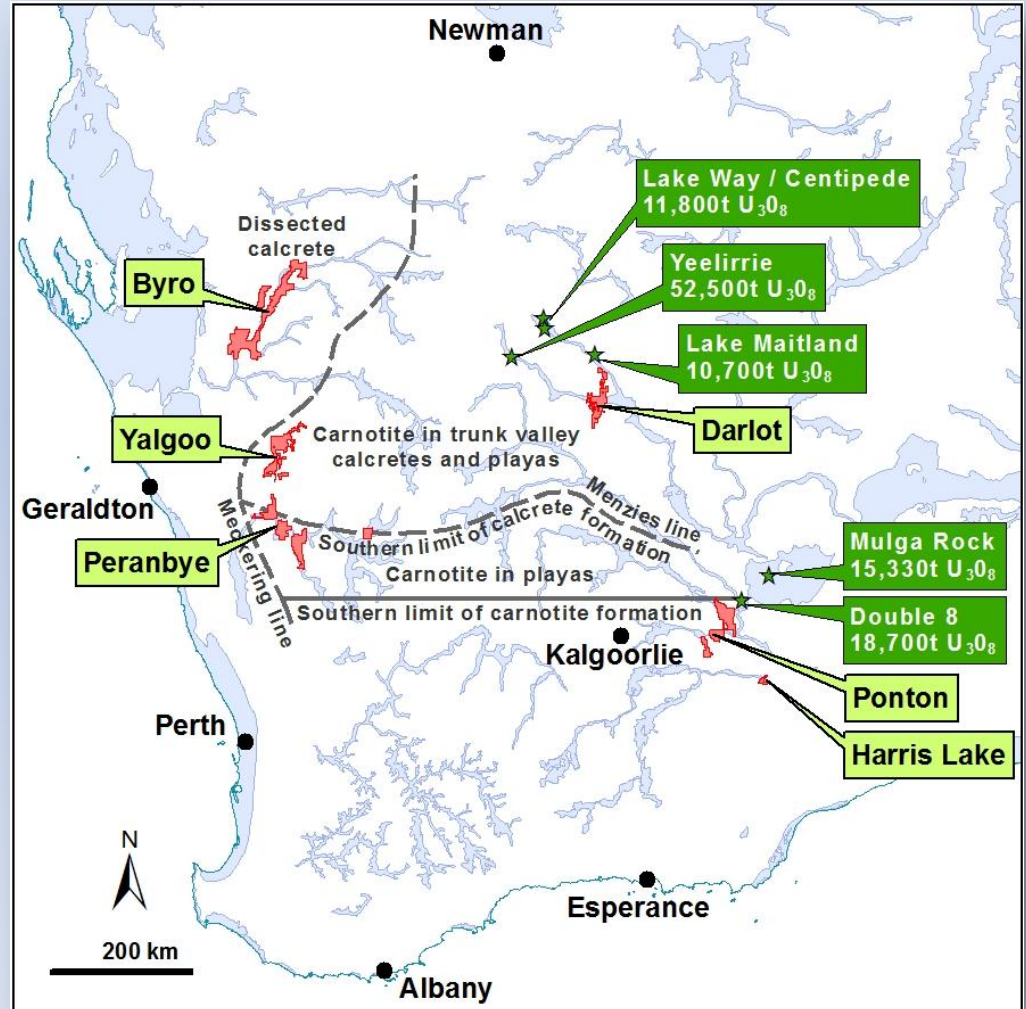


URANIUM IN CALCRETE (WA)

Charles Butt et al (CSIRO)

Classification of drainages by style of calcrete/carnotite development:

- *Carnotite in trunk valley calcretes & playas, (Yalgoo)*
- *Carnotite in playas, (Peranbye)*
- *Carnotite in dissected calcrete. (Byro)*

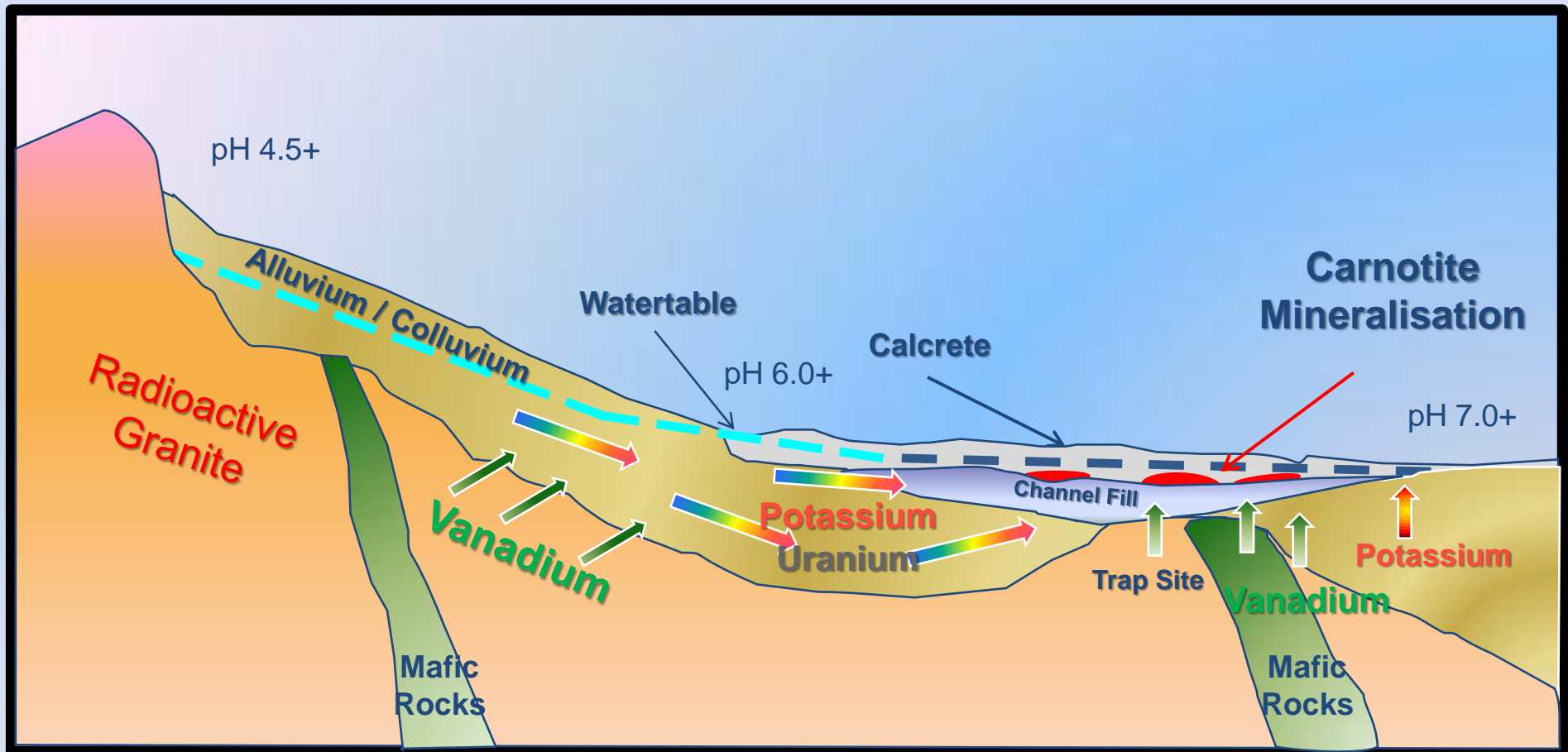


Model 1: Calcrete Hosted Uranium

Source

Fairway

Trap



Lower grade, but detectable in airborne surveys, shallow, easy to drill out & mine.

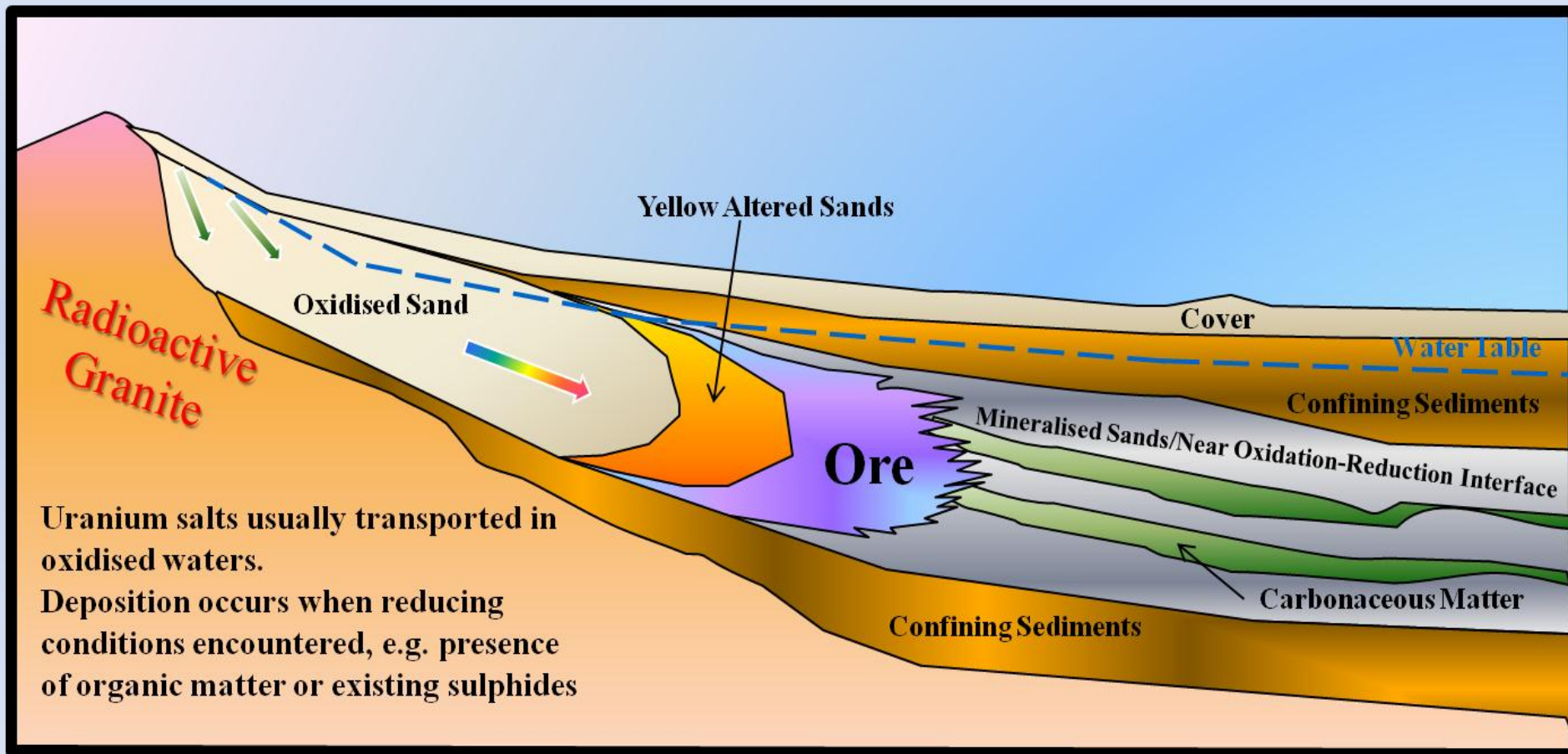
(modified from Houston et al, 2007)

Model 2: Roll Front/Sand Hosted Uranium

Source

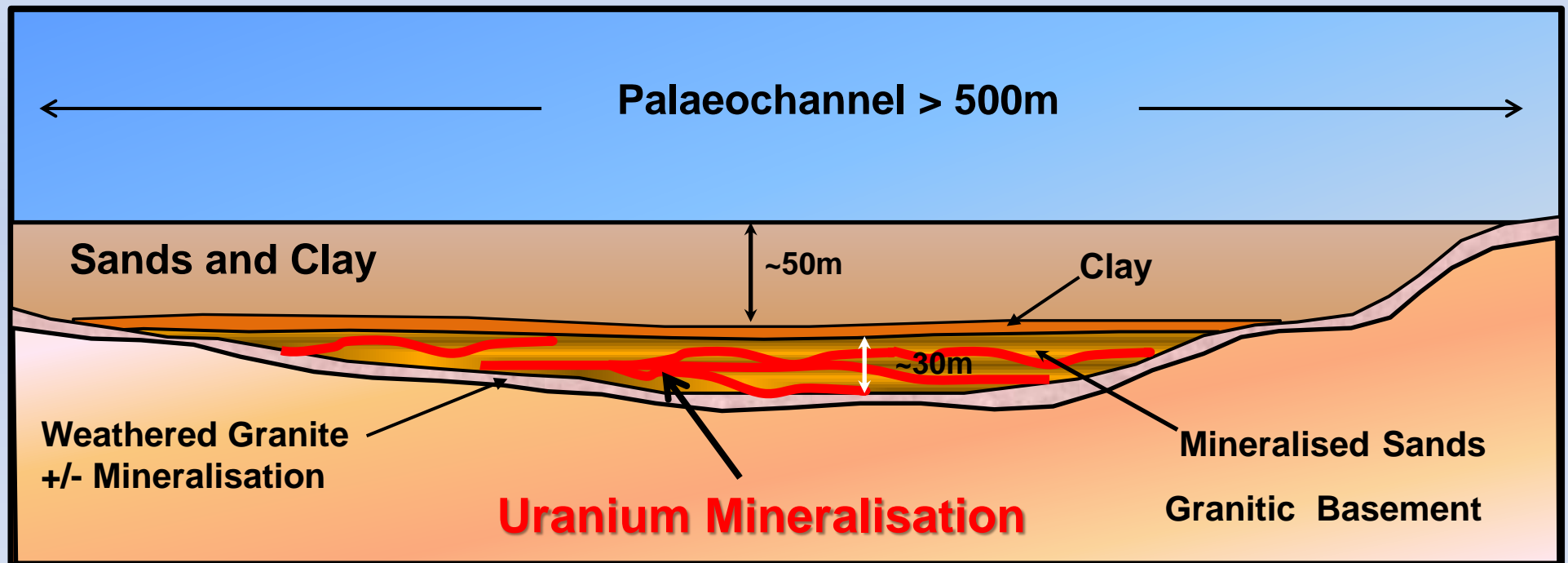
Fairway

Trap



High grade, potential for in-situ leaching, “blind” deposits, drilling intensive.

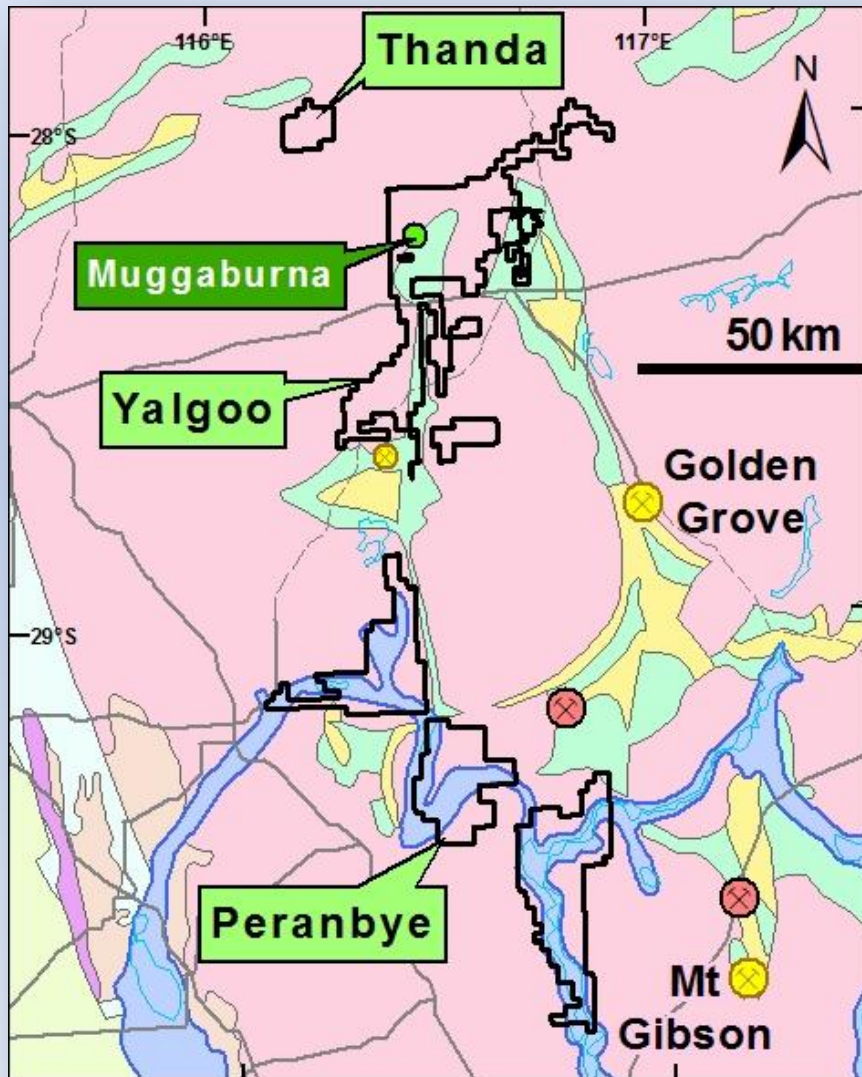
Model 2a: Buried Sand Hosted Uranium



Moderate grade, potential for in-situ leaching, “blind” deposits, drilling intensive.

Key is aquifer bounded by lower and upper aquicludes.

Yalgoo-Peranbye Projects



Targets:

- **Calcrete and Sand hosted uranium deposits**
- Strong airborne radiometric responses associated with channels & lake sediments.

2012:

- Scout Aircore/RC drilling (Yalgoo)
- Recon sampling (Peranbye)

Yalgoo Project

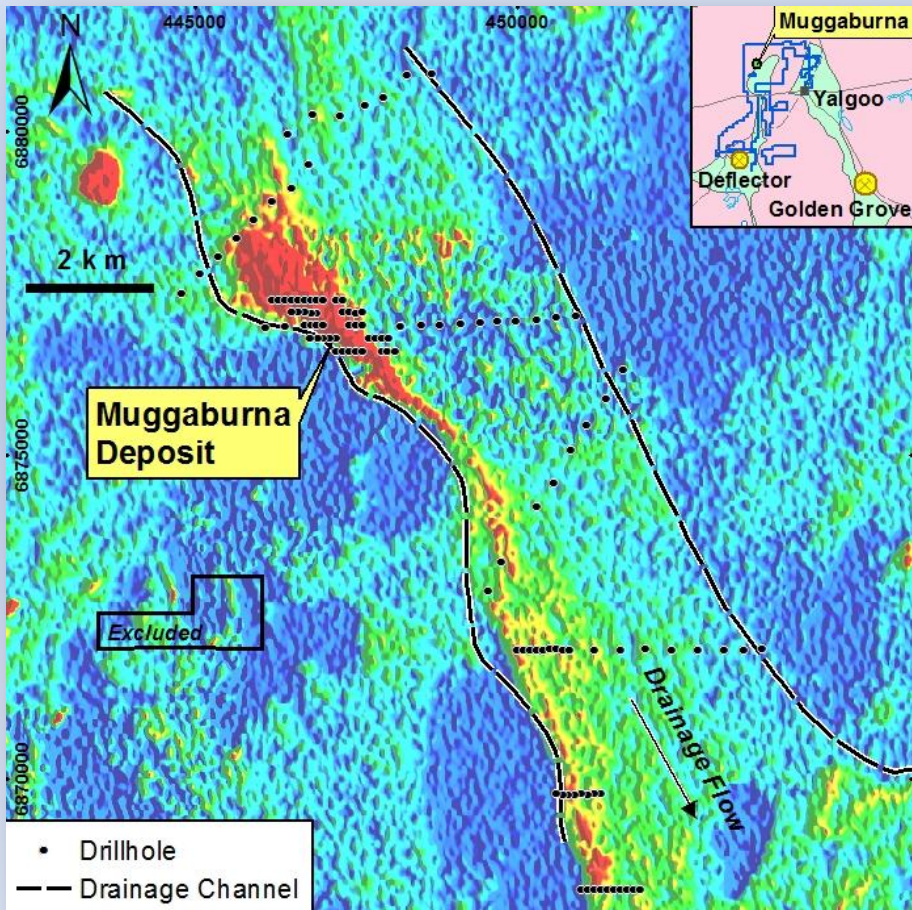
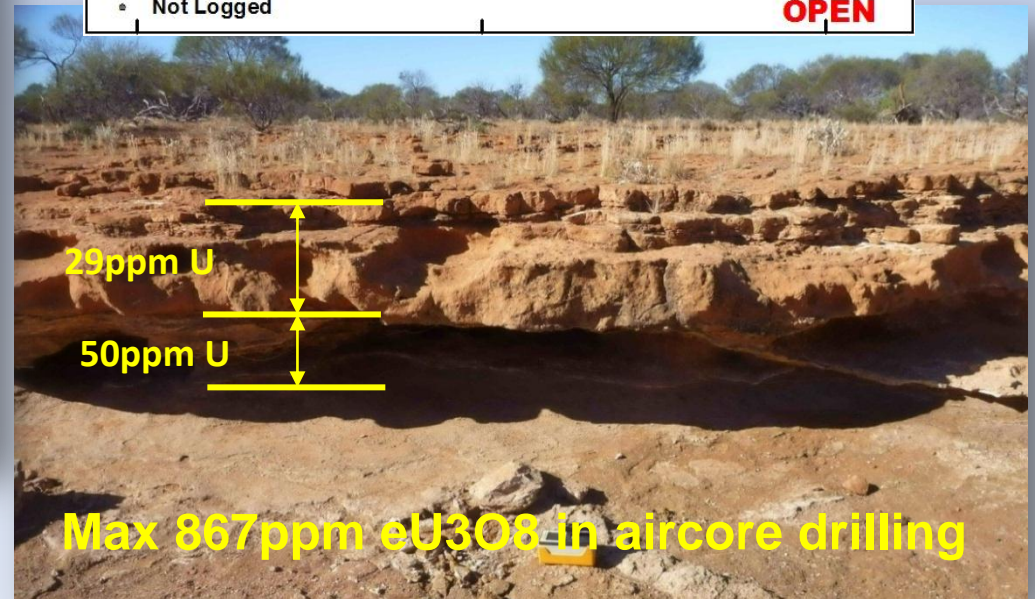
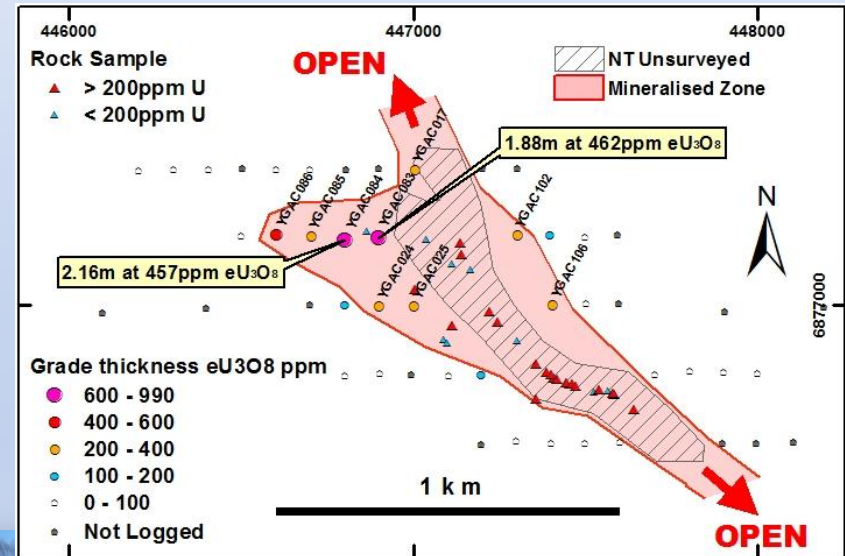
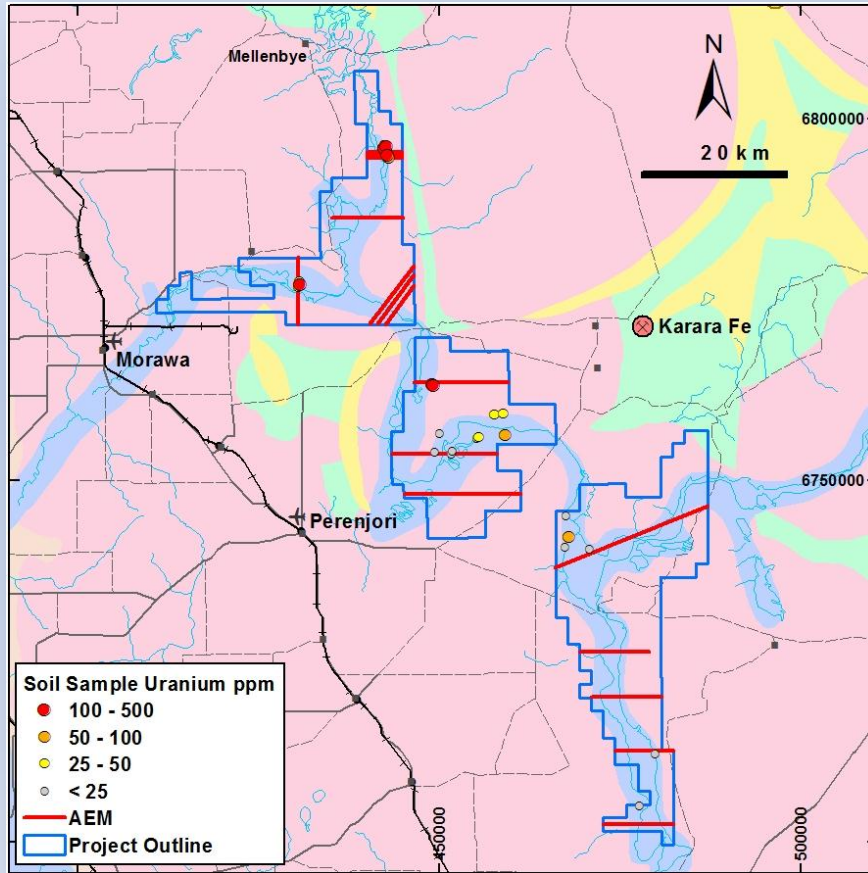


Image of airborne Uranium data.
(100m line spaced survey)



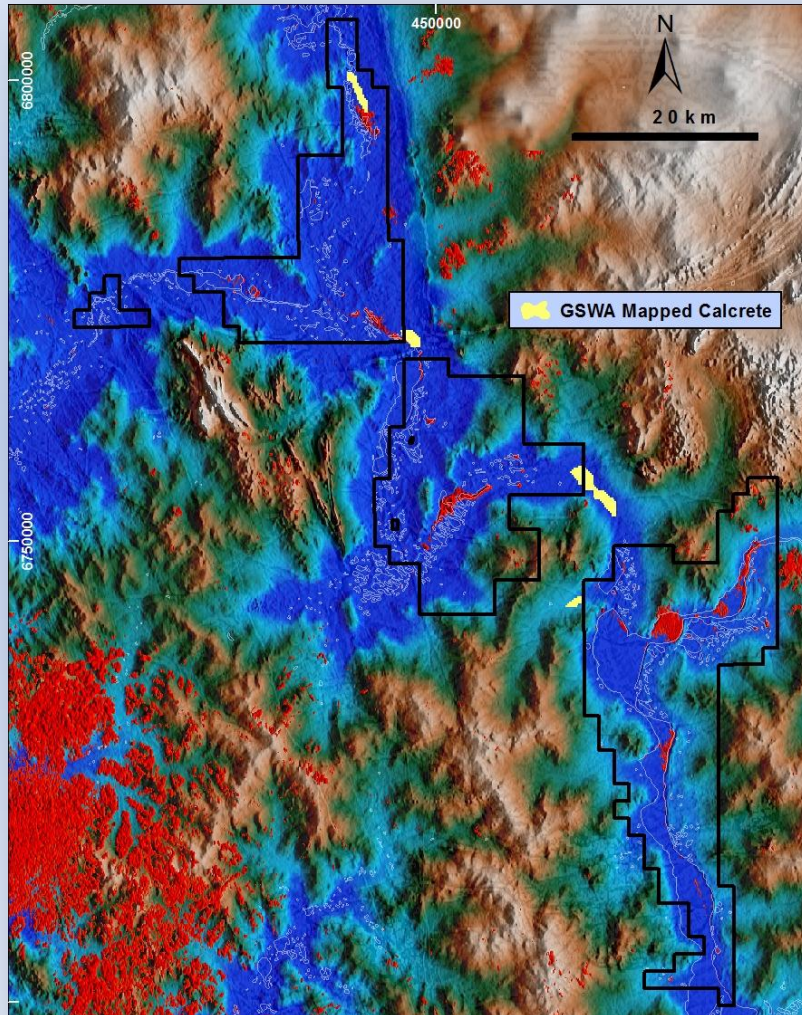
Peranbye Project



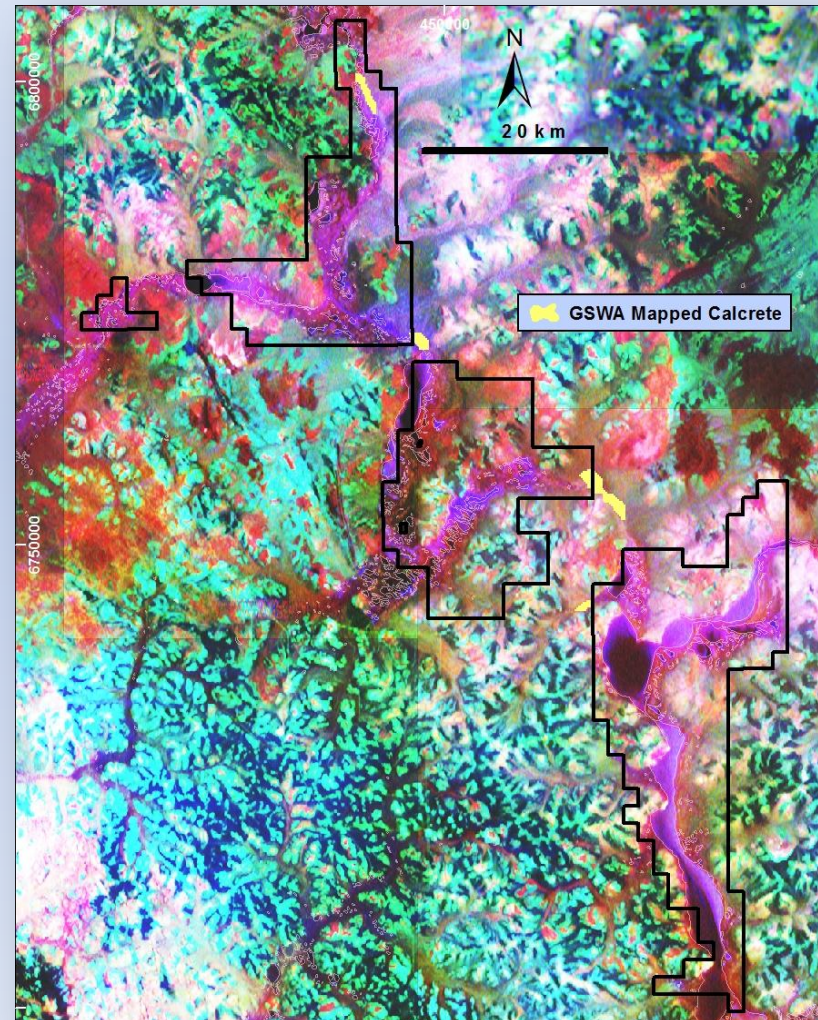
2012 Airborne EM survey lines in Red

***Eroded ferruginous "hardpan" exposing calcrete
in present day channel***

Peranbye Project

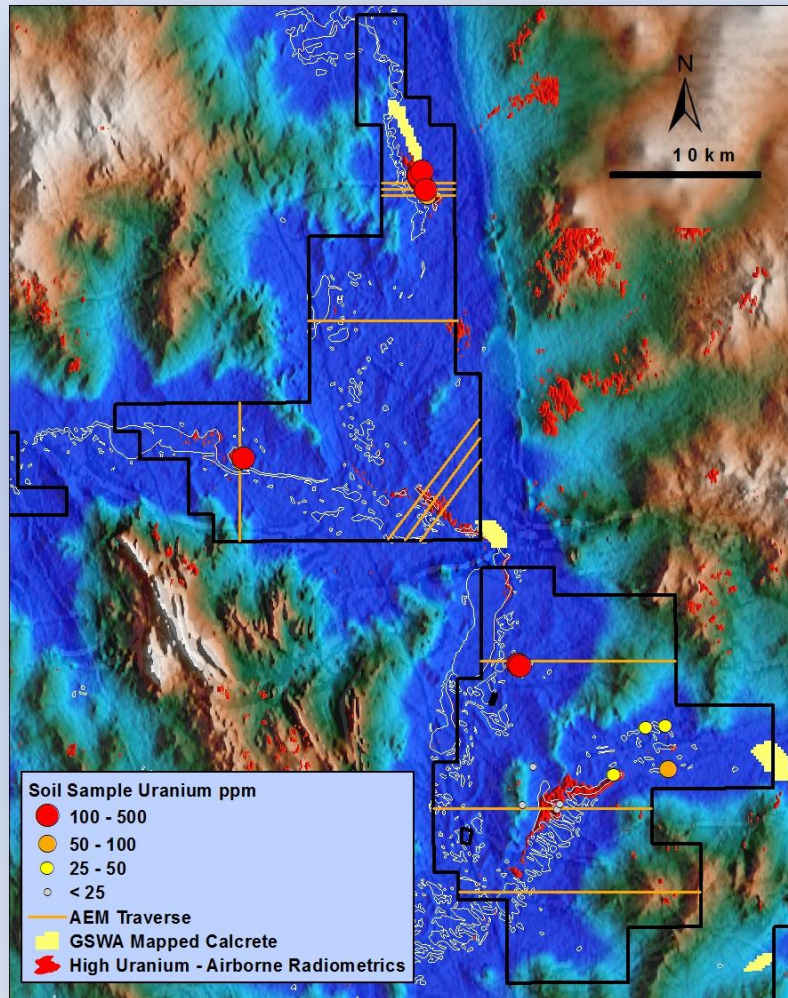


High Uranium (Red) over Digital Terrain Image

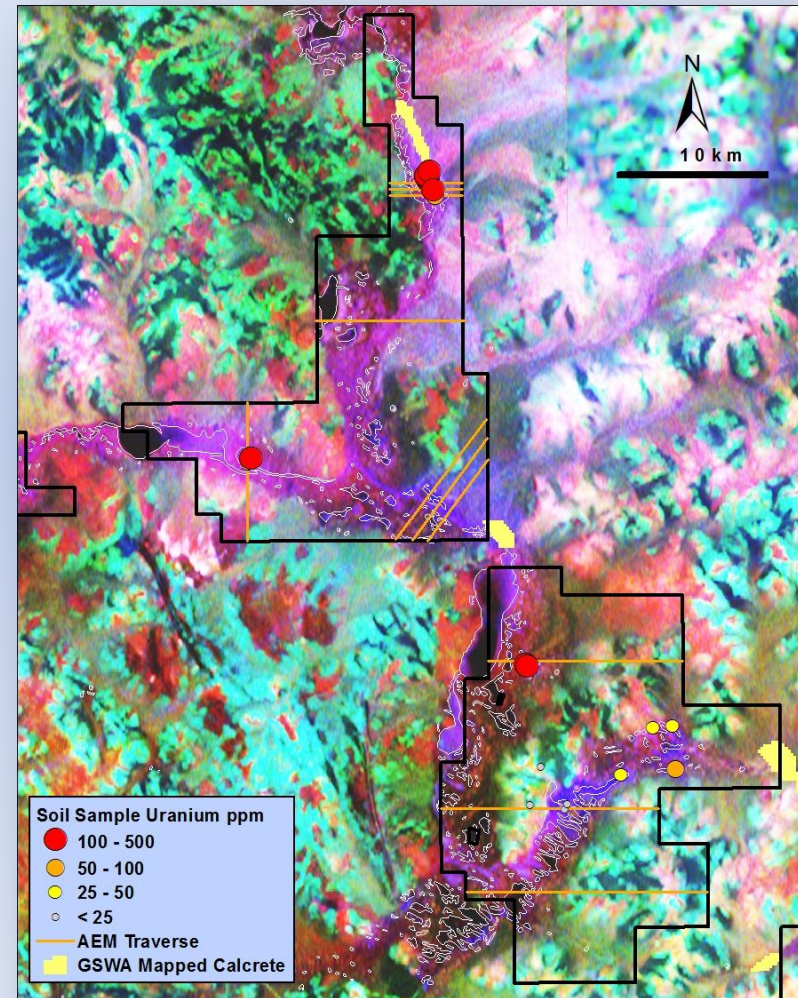


*RGB Radiometric Image
Calcrete Targets in blue/magenta*

Peranbye Project

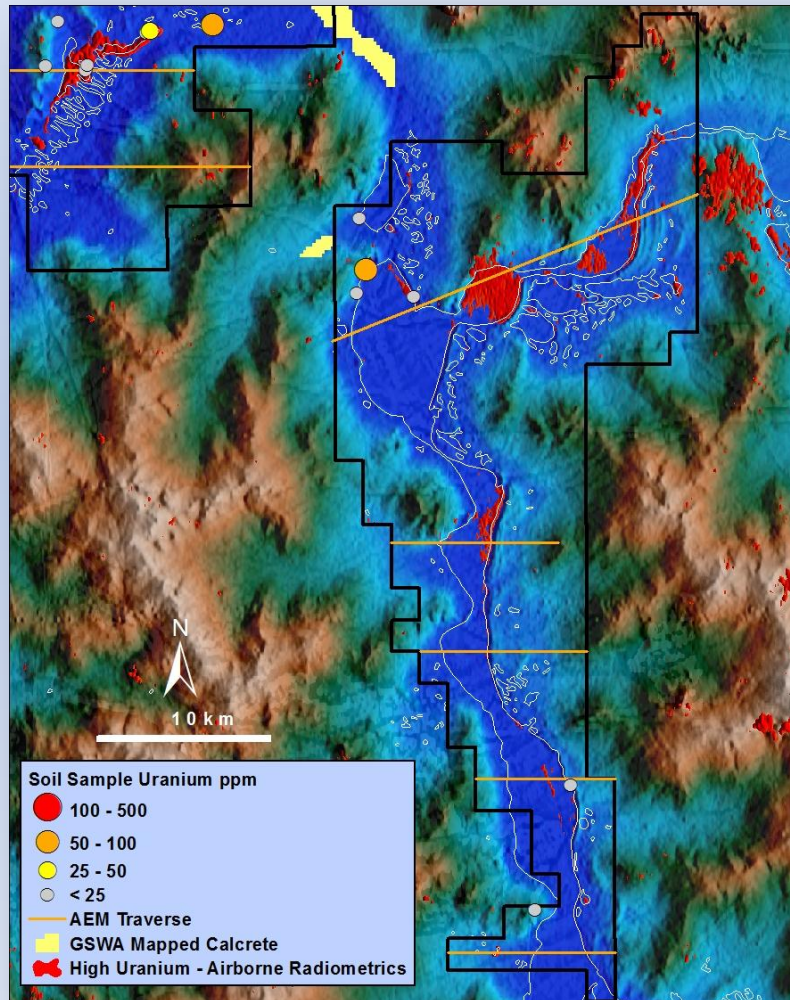


Uranium (Red) over Digital Terrain Image

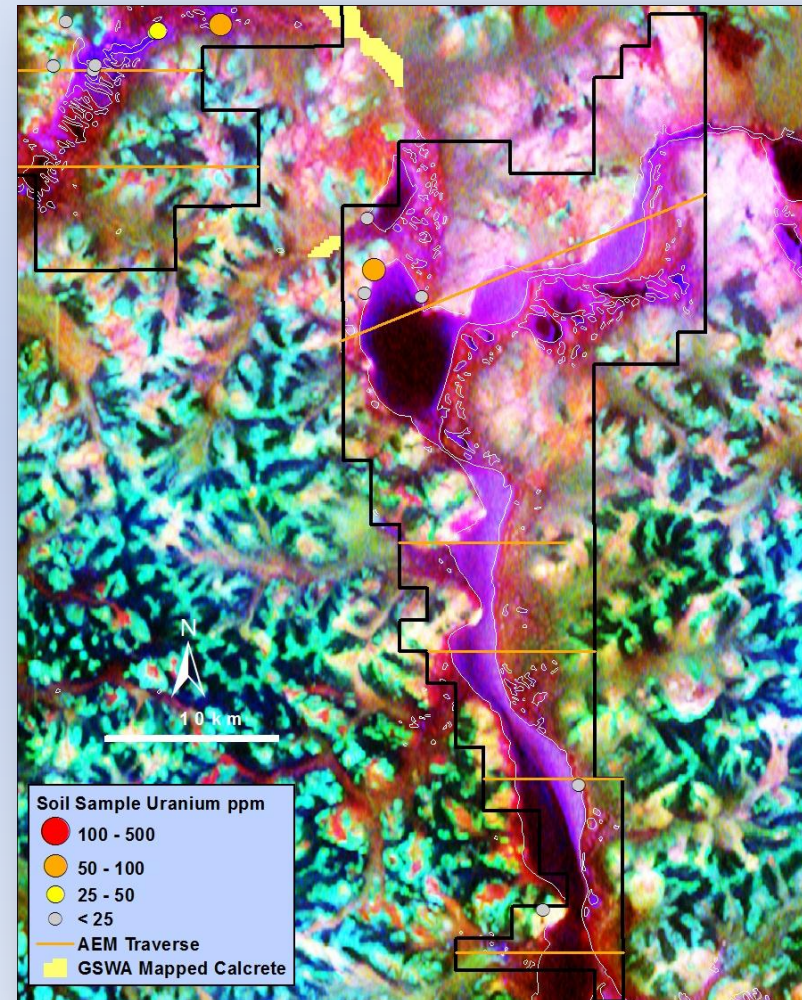


**RGB Radiometric Image
Calcrete Targets in blue/magenta**

Peranbye Project

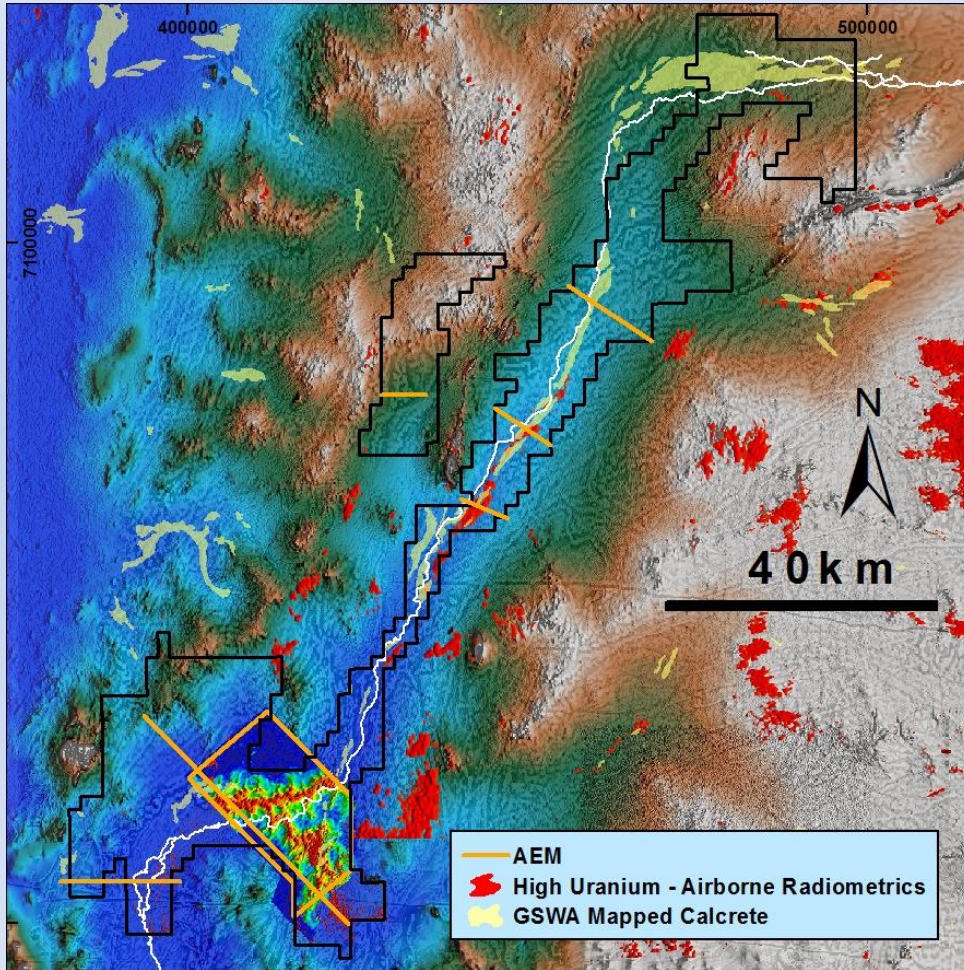


Uranium (Red) over Digital Terrain Image

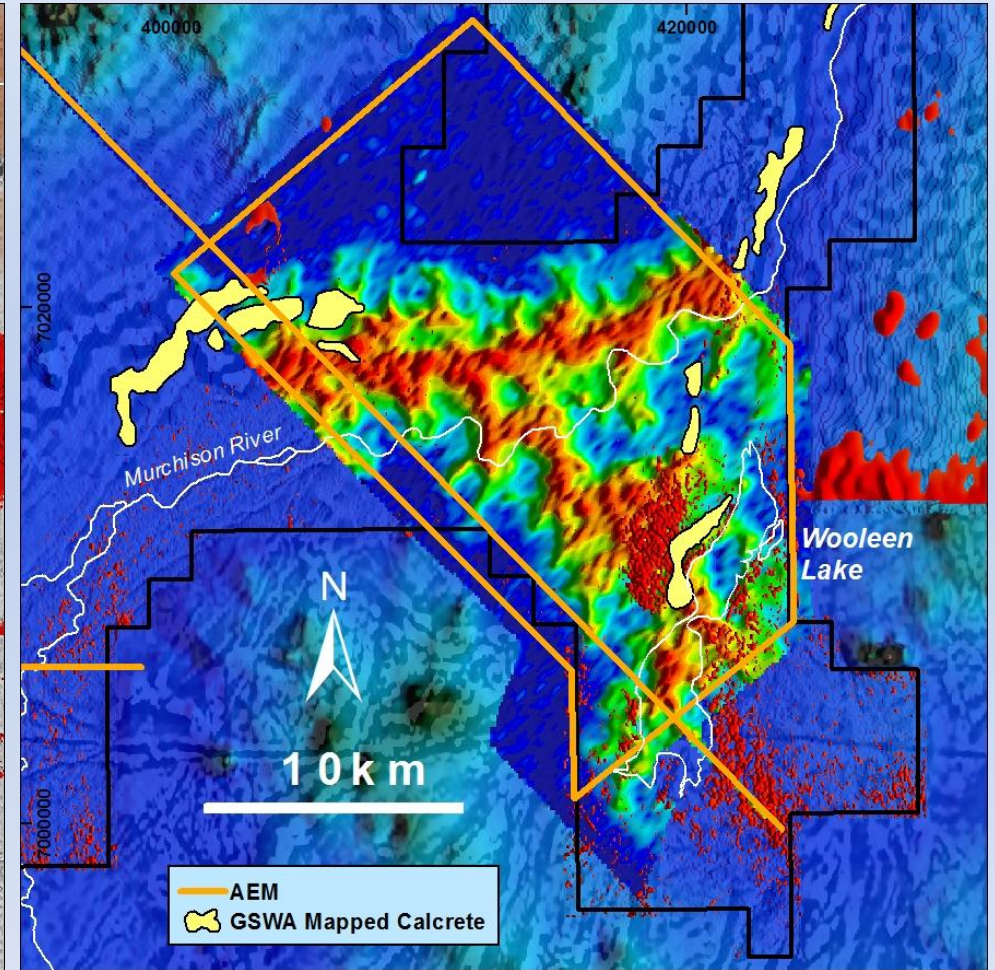


**RGB Radiometric Image
Calcrete Targets in blue/magenta**

Byro Project Calcrete & sand hosted targets

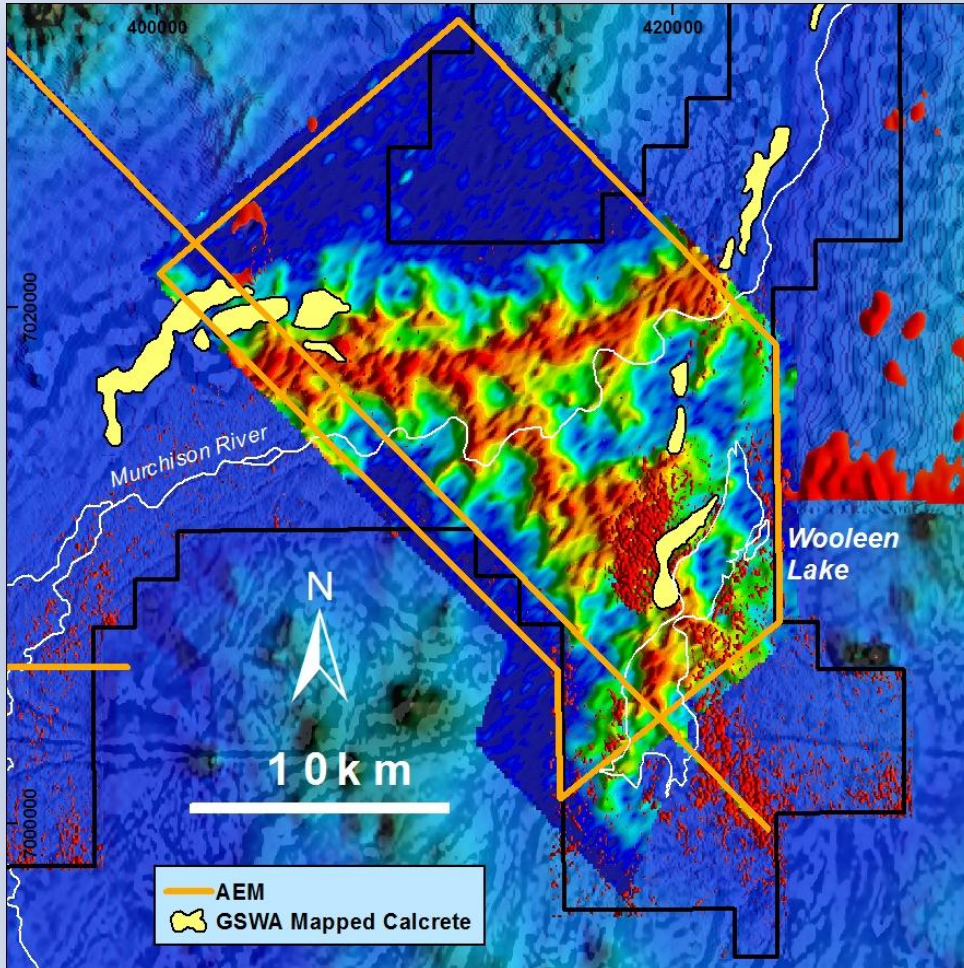


Digital Terrain Image, calcrete (yellow) & uranium (red)

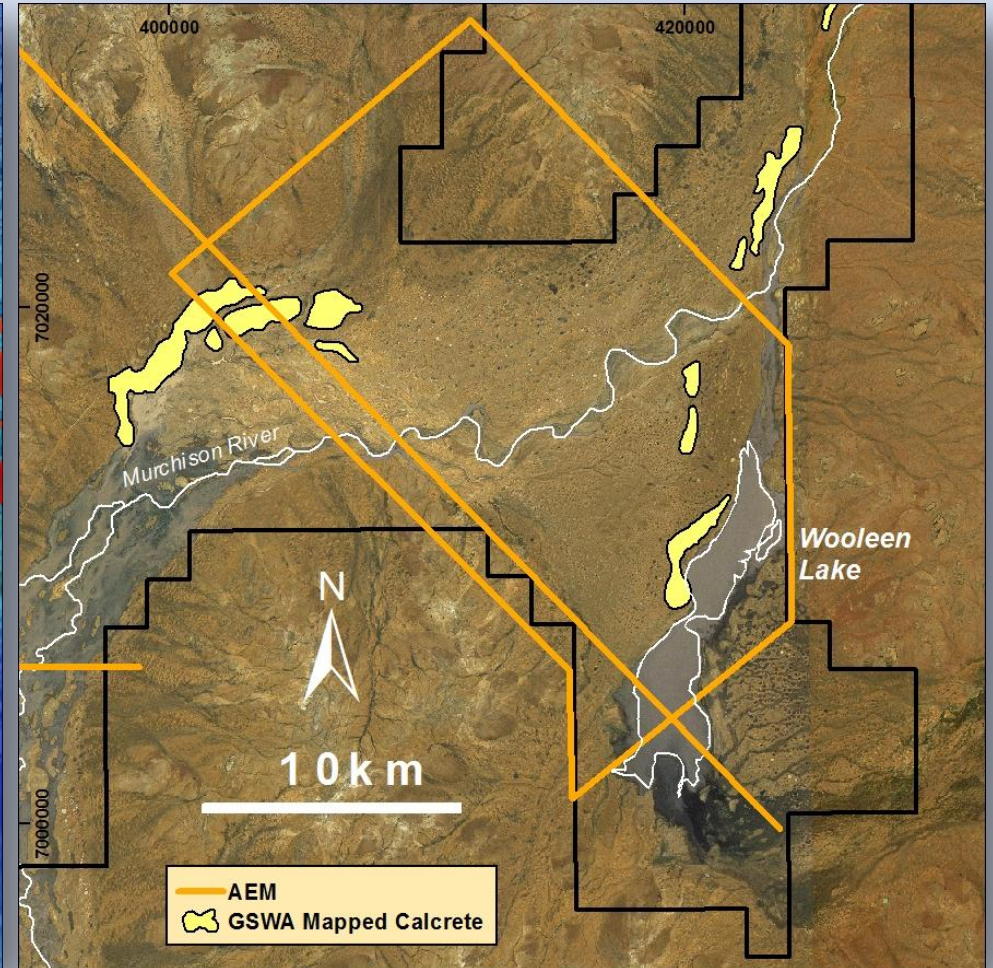


AEM Channel 15 over Inland Delta & DTM

Byro Project Calcrete & sand hosted targets

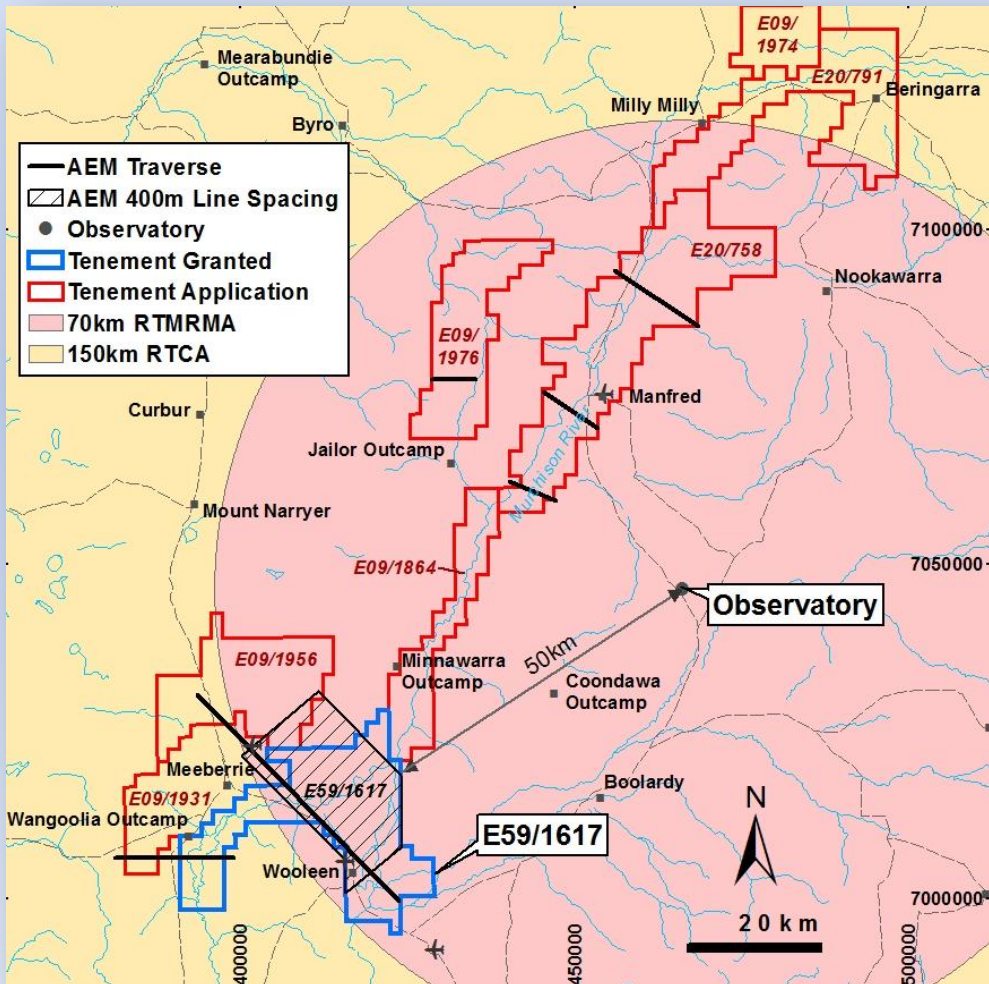


AEM Channel 15 over Inland Delta & DTM



Google Earth Image Showing Inland Delta

Byro Project



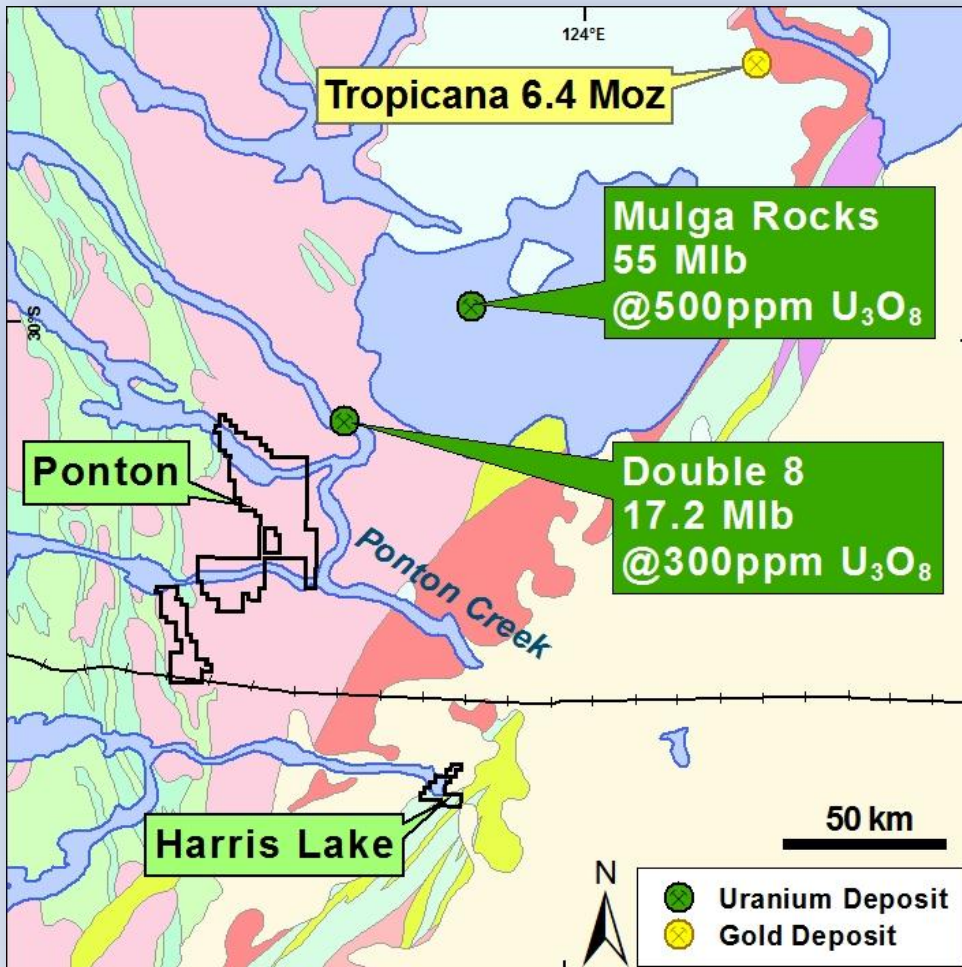
“Square Kilometre Array” area

2012 Work program

- Airborne EM surveys completed July.
- Radio Emissions Plan for SKA area submitted to Gov't.
- POW in preparation.
- Heritage Survey planned.
- RC drill testing palaeochannel on Granted tenement.
- Drill test Murchison channel when other tenements granted.
- \$120,000 from Gov't (Co-funded drilling)

Ponton & Harris Lake Projects

Regional Geology



Calcrete & Sand Hosted Targets

2011:

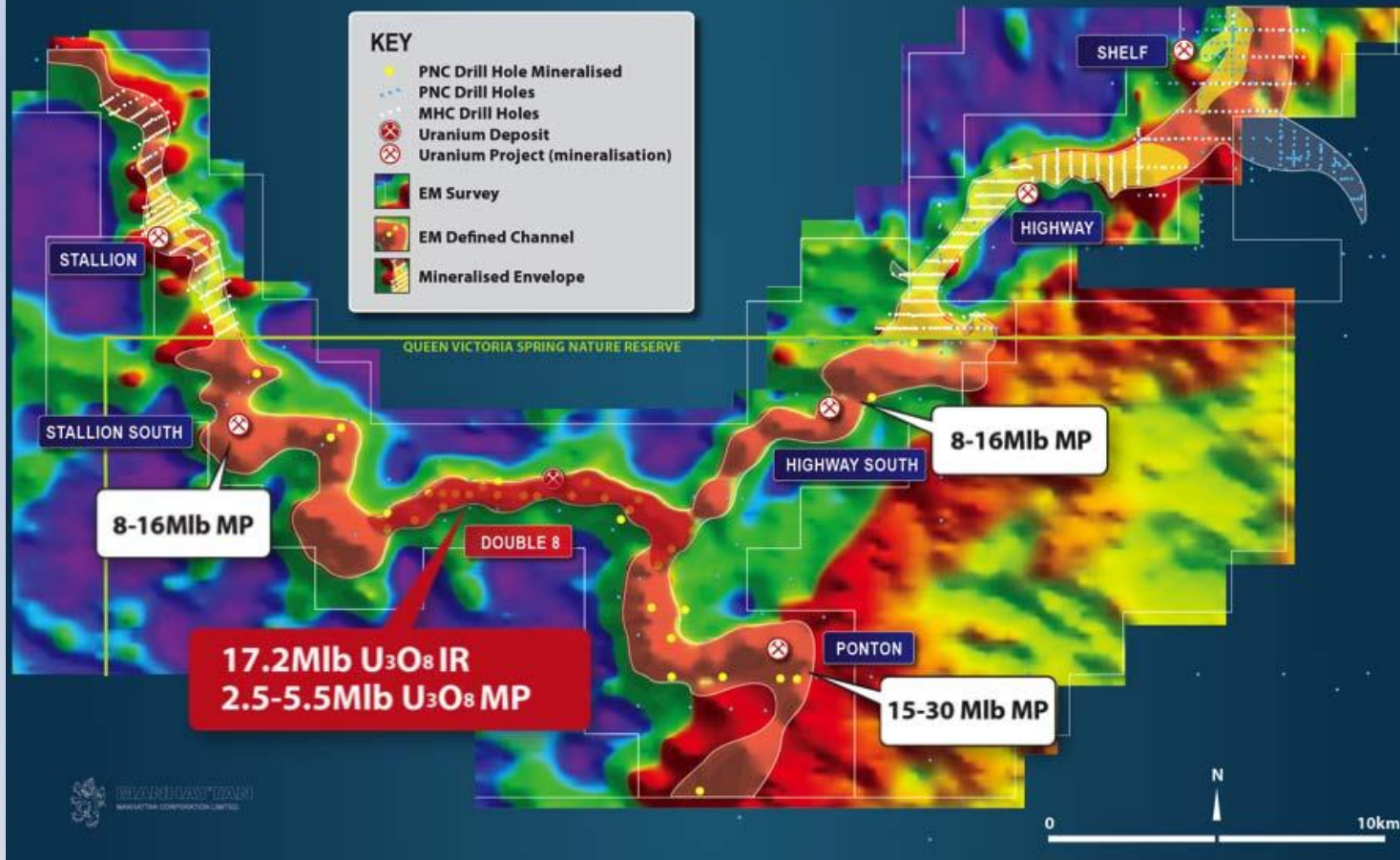
- Pegged ground over strong airborne Uranium responses associated with channel & lake sediments.
- Proven Uranium district.

2012:

- Airborne EM survey completed July.
- Grant of tenements imminent.
- Scout Aircore/RC drilling proposed.

Manhattan's Ponton Project

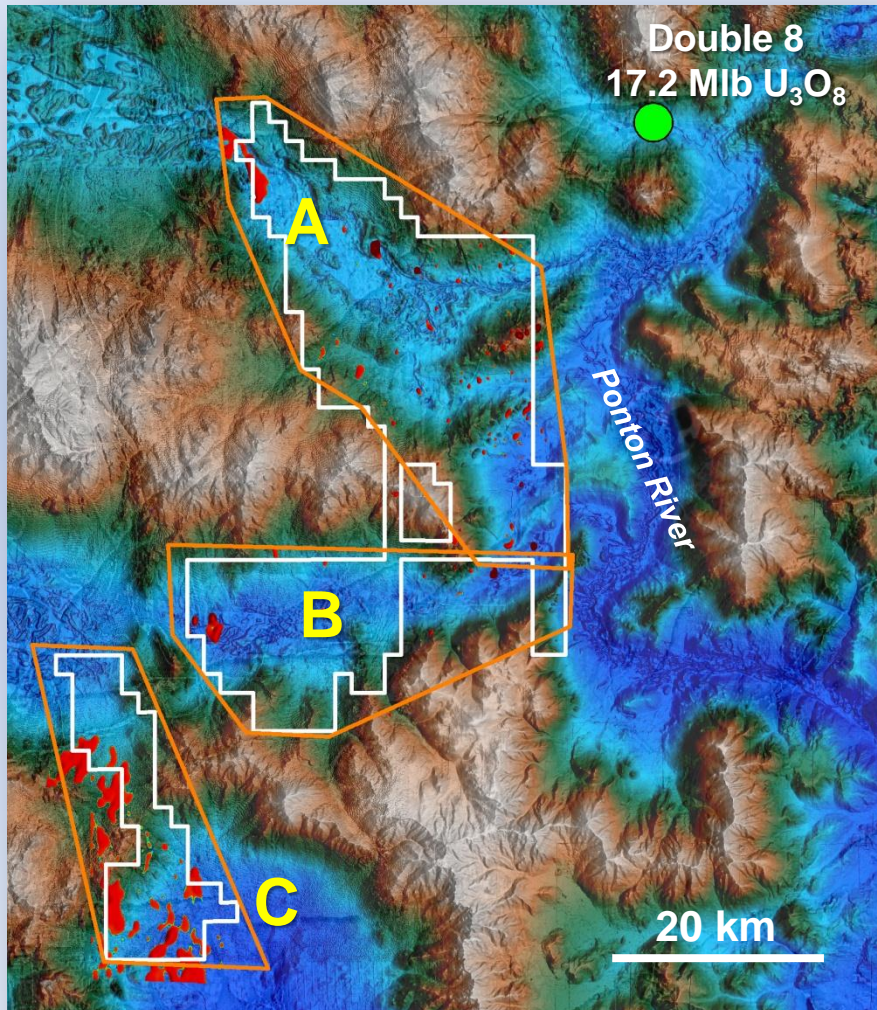
STALLION - DOUBLE 8 - HIGHWAY DRILLING



Competitor Project

- Carbonaceous sand hosted uranium mineralisation.
- Below 40 to 60 metres of cover.
- Defined in drill holes along 55km of Tertiary palaeochannels.
- Channels connect with Energy and Minerals Australia's lignite hosted Mulga Rock deposit.

Ponton Project



Uranium (Red) over Digital Terrain Image

2012 Drill Targets

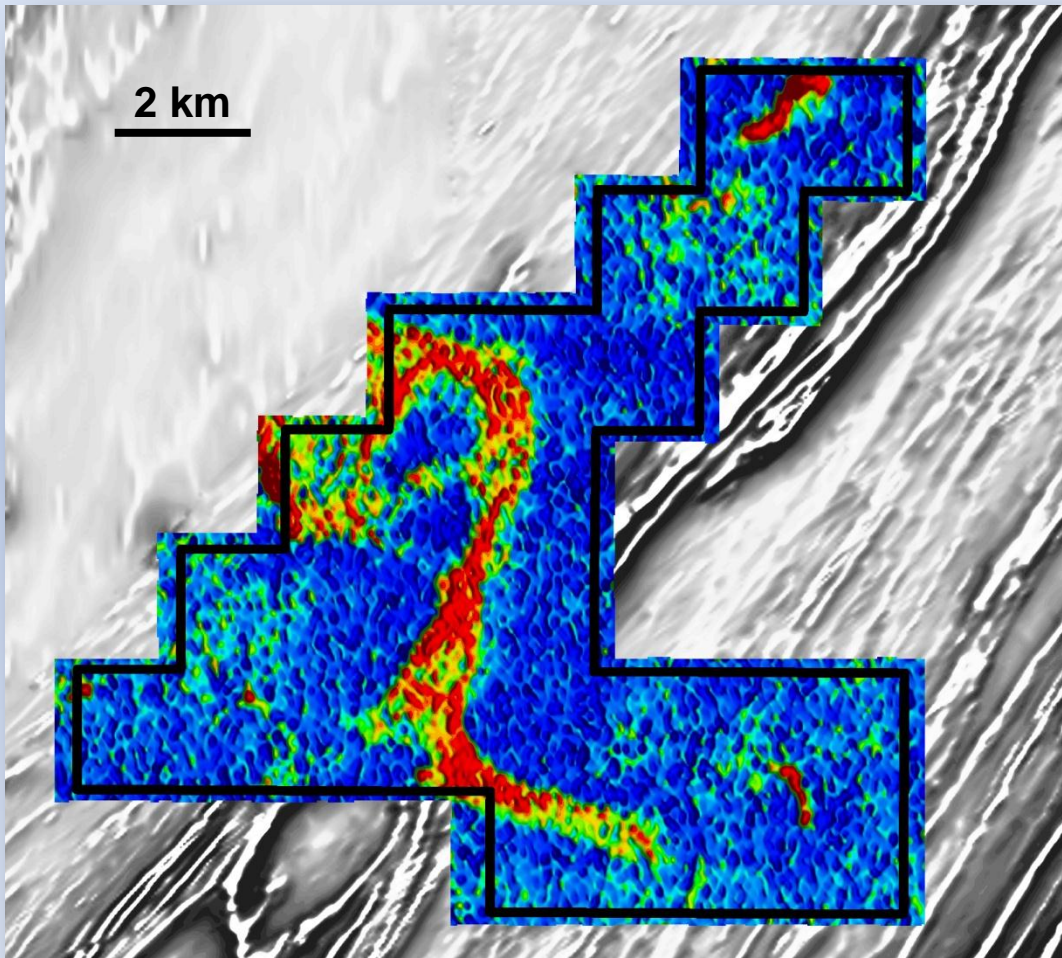
Target A: Lake Rebecca.

Target B: Lake Yindana.

Target C: Lake Roe.

 **2012 AEM** (1000m line spacing)

Harris Lake Project



Uranium Channel over Magnetics

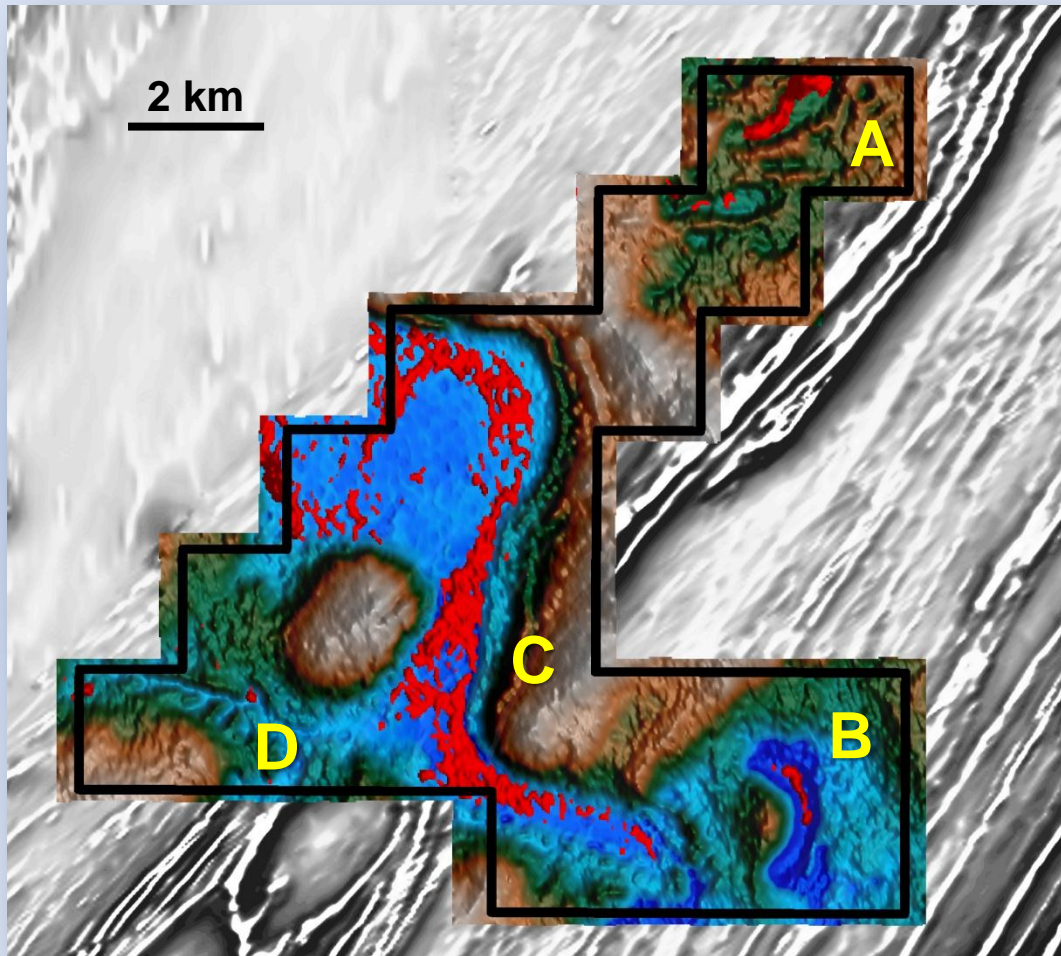
2011:

- Strong Uranium response in detailed mag/rad survey.

2012:

- Airborne EM survey completed (July)
- Heritage survey required.
- **Aircore/RC drilling.**

Harris Lake Project



Uranium (Red) over Digital Terrain Image

2012 Drill Targets

Target A: Strong discrete elongate (1,500m x 200m) uranium response.

Target B: Coincident with an isolated “oxbow” off main drainage. Discrete (1,000m x 150m) uranium response.

Target C: Main anomalous uranium response, 10km long.

Target D: EW trending tributary, possibly masked by water in the drainage.

- **Subsidiary of Sinotech Minerals Exploration Co., Ltd.**
- **Beijing Institute of Geology for Mineral Resources (BIGM) is major shareholder (45%).**
- **Focus is exploration, mine development and geo-services.**
- **Enterprise is first equity investment in Australia.**
- **Sinotech aims to create an international exploration & mining company by strategic partnering with locally based exploration companies.**
- **Holds a 20% interest in Canaco Resources Inc. (TSX-V: CAN) and 41% interest in Silvore Fox Minerals Corp. (TSX-V: SFX).**

“Investment in foreign public companies, our strategy”

- **Discover well-credited junior exploration companies with good properties.**
- **Provide financial and technical support, even properties if necessary.**
- **Adjust our shareholding position according to corporate demand & market reaction and expectation – whatever can grow the company and increase shareholder value.**
- **Long-term strategic partnership.**

Reporting of Exploration Results



The information in this presentation that relates to Exploration Results, Mineral Resources or Ore Reserves is based on information compiled by Dermot Ryan, a Fellow of the Australasian Institute of Mining & Metallurgy. Dermot Ryan is a Director of the Company and a geological consultant to it through XServ Pty Ltd.

Dermot Ryan has sufficient experience which is relevant to the style of mineralisation and type of deposit under consideration and to the activity which he is undertaking to qualify as a 'Competent Person' as defined in the 2004 Edition of the 'Australian Code for Reporting of Exploration Results, Mineral Resources and Ore Reserves'. Dermot Ryan consents to the inclusion in this report of the matters based on his information in the form and context in which it appears.