

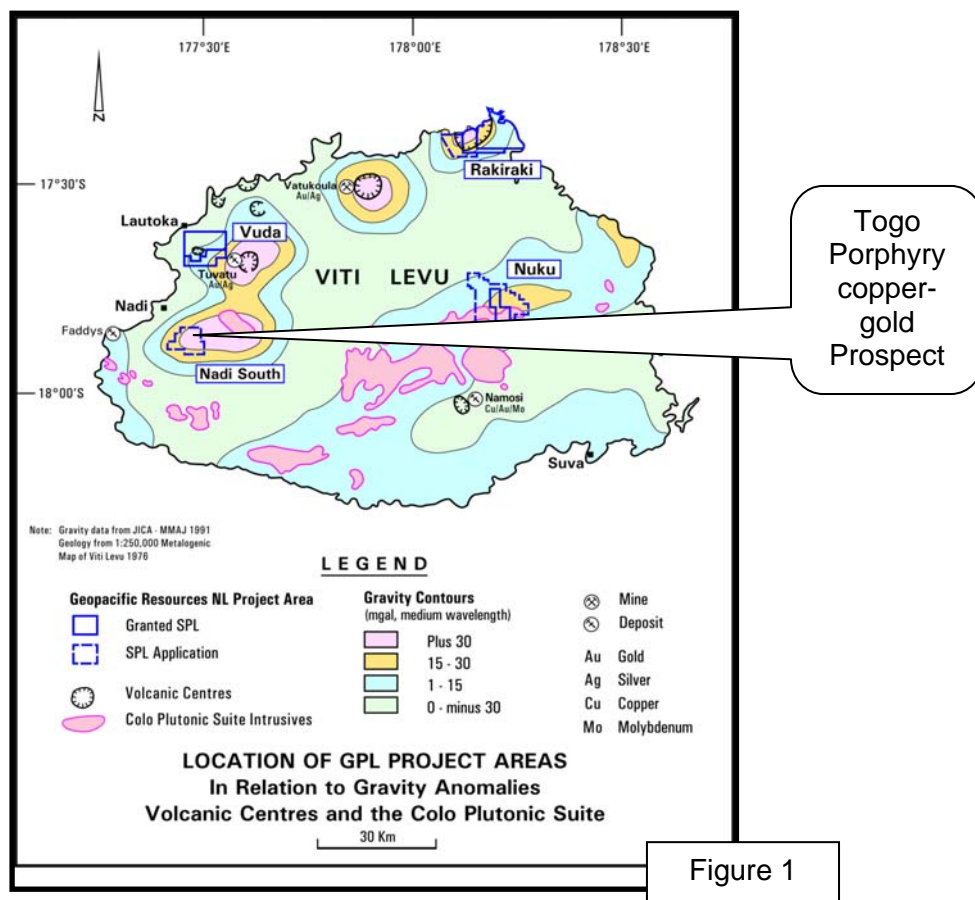
17 May 2007

The Company Announcements Office
Australian Stock Exchange Limited
Exchange Centre, Level 6, 20 Bridge Street
SYDNEY NSW 2000

Dear Sir/Madam,

Geopacific Resources reports promising drill results at the Togo Porphyry copper-gold Prospect, Nadi South, Fiji

Geopacific Resources NL (ASX: GPR) is pleased to announce that it has completed three drill holes in a six drill hole programme at the Togo Porphyry copper-gold Prospect located south of Nadi, Fiji (Figure 1).



Geopacific Resources NL
ACN 003 208 393

info@geopacific.com.au
www.geopacific.com.au

Australia – Sydney
556 Crown St
(PO Box 477)
Surry Hills
NSW 2010
AUSTRALIA

T +61 2 9699 7311
F +61 2 9699 7322

Fiji – Nadi
PO Box 9975
Nadi Airport
Nadi
FIJI

Alteration, mineral assemblages and lithologies intersected by the drilling are typical of a porphyry copper gold system and the remaining planned drill holes will test high chargeability areas, which are expected to be higher sulphide zones within the porphyry system.

The Togo Porphyry Cu-Au Prospect was identified by a three dimensional Induced Polarisation (IP) survey which commenced during late 2006 (refer ASX announcement dated 17 November 2006) and is located 10km south of Nadi. Six, 200-500m deep diamond drill holes are in progress as an initial test of the prospect, which is characterised by high chargeability values extending from near surface to over 500m depth and across a strike length of more than 2 kilometres (Figure 2). Three drill holes have been completed (DDHNT001-3) and provide a better understanding of the complex porphyry Cu-Au system. DDHNT004 is close to completion and DDHNT005 is expected to commence during the next few days (Table 1).

Table 1. Drill hole summary, Togo Prospect.

drill hole	planned depth (m)	easting	northing	dip	completed depth (m)
DDHNT001	450	547000	27500	60 degrees west	447
DDHNT002	250	546830	27200	60 degrees west	200
DDHNT003	500	546340	27500	60 degrees east	309
DDHNT004	400	546500	27750	60 degrees east	in progress
DDHNT005	500	546340	27500	vertical	planned
DDHNT006	400	546340	27500	60 degrees east	planned

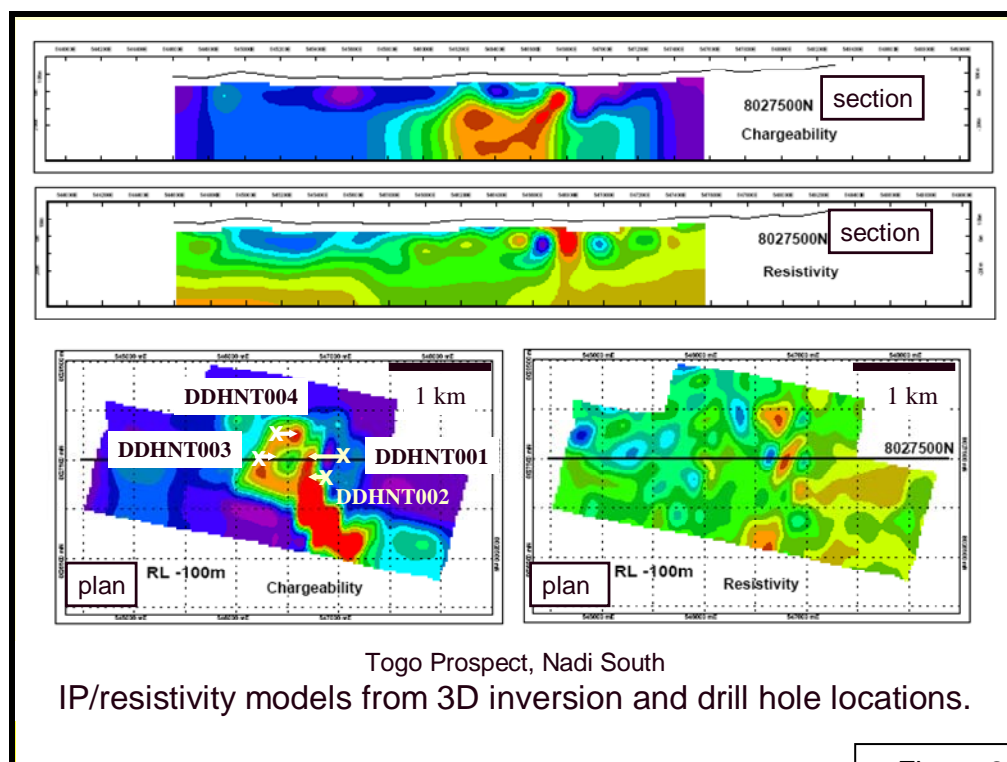


Figure 2

Geopacific Resources NL
ACN 003 208 393

info@geopacific.com.au
www.geopacific.com.au

Australia – Sydney
556 Crown St
(PO Box 477)
Surry Hills
NSW 2010
AUSTRALIA

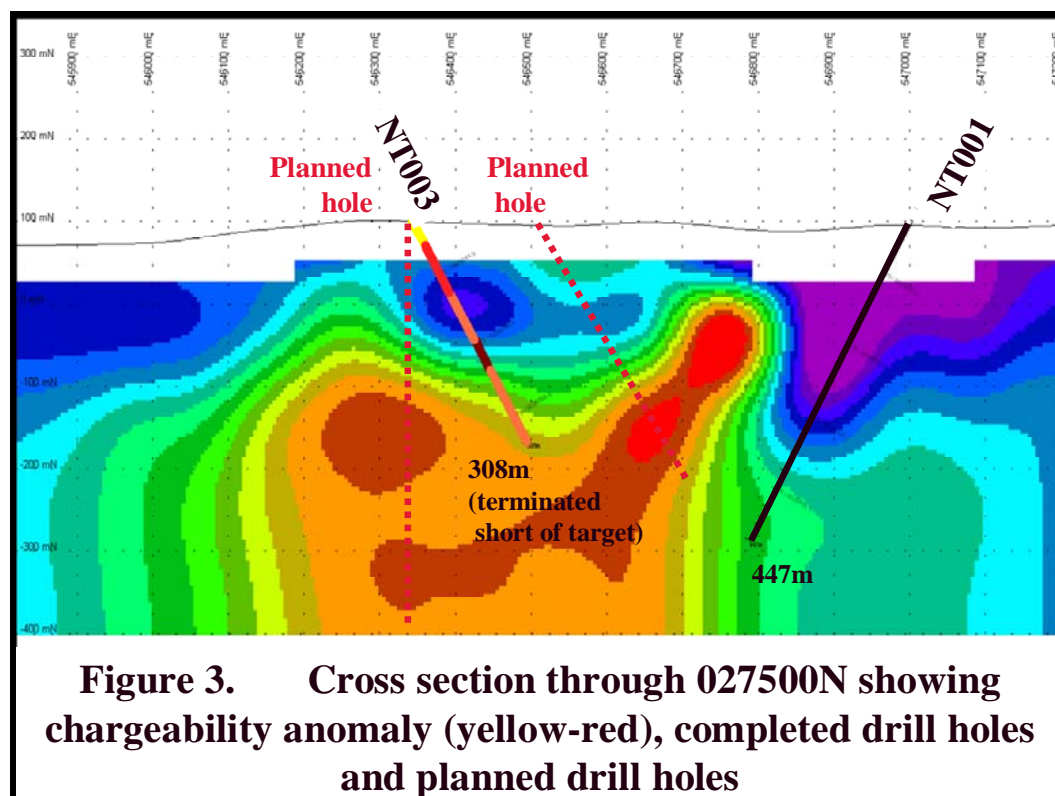
T +61 2 9699 7311
F +61 2 9699 7322

Fiji – Nadi
PO Box 9975
Nadi Airport
Nadi
FIJI

Drill holes DDHNT001 and 2 are located on a chargeability low and within an area of surface gold anomalism to the east of the circular chargeability IP anomaly (Figure 2 and 3) and were drilled to depths of 447m and 200m respectively. Minor gold and copper mineralisation was intersected in both drill holes.

Pyrite, minor chalcopyrite and rarer chalcocite is widespread in drill core from DDHNT003 and DDHNT004 and commonly occurs in fine grained fractures and veinlets as well as disseminations in intrusives within alteration zones containing sericite, biotite and magnetite. Photographs of drill core in Figure 4 show these textures. Assay data has yet to be returned for DDHNT003 and DDHNT004.

Planned drill holes DDHNT005 and DDHNT006 will test the deeper, higher chargeability zones overlying and surrounding the inferred source porphyry of the mineralised system (Figure 5).



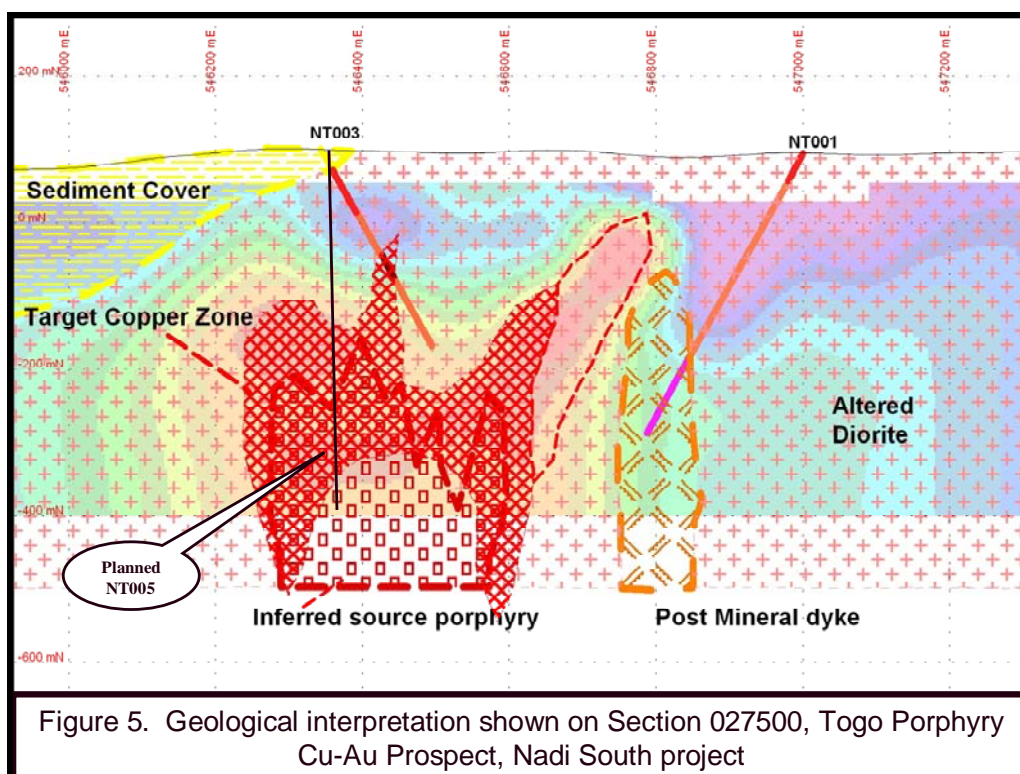
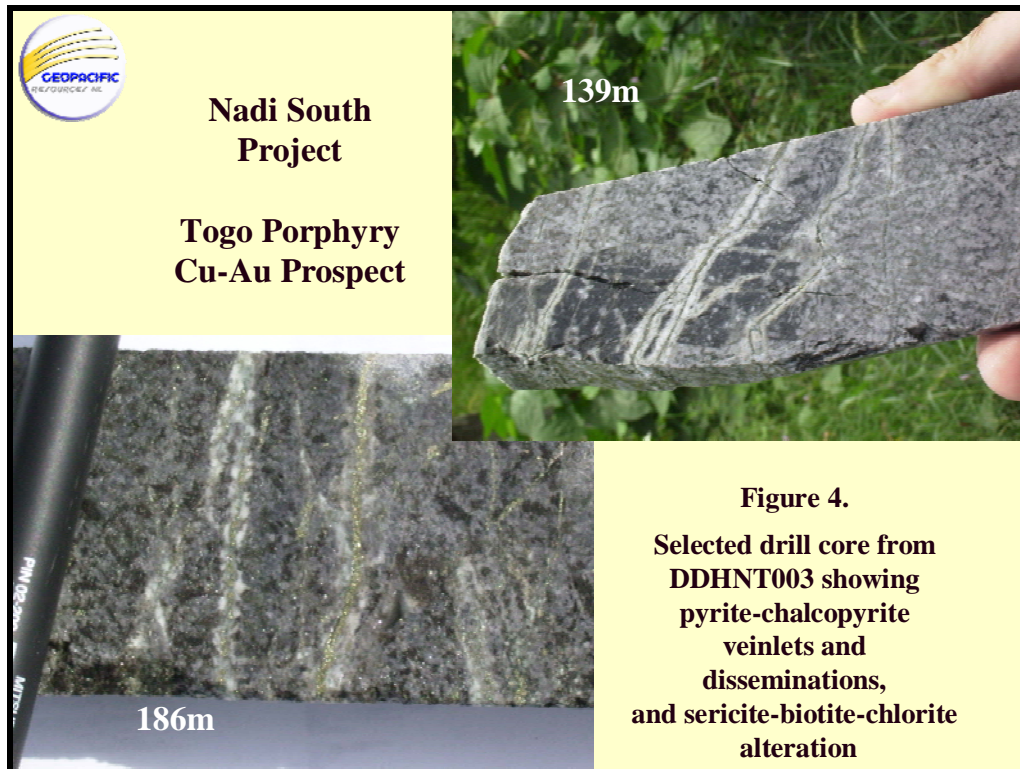
Geopacific Resources NL
ACN 003 208 393

info@geopacific.com.au
www.geopacific.com.au

Australia – Sydney
556 Crown St
(PO Box 477)
Surry Hills
NSW 2010
AUSTRALIA

T +61 2 9699 7311
F +61 2 9699 7322

Fiji – Nadi
PO Box 9975
Nadi Airport
Nadi
FIJI



Geopacific Resources NL
ACN 003 208 393

info@geopacific.com.au
www.geopacific.com.au

Australia – Sydney
556 Crown St
(PO Box 477)
Surry Hills
NSW 2010
AUSTRALIA

T +61 2 9699 7311
F +61 2 9699 7322

Fiji – Nadi
PO Box 9975
Nadi Airport
Nadi
FIJI



Other information on the Company's projects and previous Geopacific announcements are available on Geopacific's website at www.geopacific.com.au.

Yours faithfully

A handwritten signature in black ink, appearing to read 'I. J. Pringle'.

Ian J Pringle
(Managing Director)

Competent Person

*The review of exploration activities and results contained in this report is based on information compiled by **Dr Ian Pringle**, a Member of the Australasian Institute of Mining and Metallurgy. Dr Pringle is the Managing Director of Geopacific Resources NL and also a Principle of Ian J Pringle & Associates Pty Ltd, a consultancy company in minerals exploration. He has sufficient experience which is relevant to the style of mineralization and types of deposits under consideration and to the activity which he is undertaking to qualify as a Competent Person as defined in the December 2004 edition of the Australasian Code for Reporting of Exploration Results, Mineral Resources and Ore Reserves (the JORC Code). Dr Pringle has consented to the inclusion in this report of the matters based on his information in the form and context in which it appears.*

Further Information

For further information please contact Ian Pringle, Managing Director, on (02) 9699 7311 or ian@dca.org.au. An overview of Geopacific Resources NL can be viewed at www.geopacific.com.au.

Geopacific Resources NL
ACN 003 208 393

info@geopacific.com.au
www.geopacific.com.au

Australia – Sydney
556 Crown St
(PO Box 477)
Surry Hills
NSW 2010
AUSTRALIA

T +61 2 9699 7311
F +61 2 9699 7322

Fiji – Nadi
PO Box 9975
Nadi Airport
Nadi
FIJI