

06 September 2017

## **NEW CENTURY ENTERS COLLABORATION AGREEMENT WITH WAANYI REGEN JV FOR POTENTIAL SOUTH BLOCK DEVELOPMENT**

- **Collaboration Agreement to assess minability of South Block**
- **New Century & Waanyi PBC to progress cultural heritage processes**
- **South Block mineralisation progressing toward a JORC Resource**
- **New Century & WRJV to explore future mining services opportunities**

**New Century Resources Limited (Company or New Century)** (ASX:NCZ) is pleased to announce it has entered into a Collaboration Agreement with the Waanyi ReGen Joint Venture (**WRJV**) to assess the feasibility of open cut mining operations at the Century Zinc Mine, centered around the recently identified mineralisation at South Block.

The WRJV is a joint venture between Waanyi Enterprises Pty Ltd and Downer EDI Mining Pty Ltd, representing the interests of both the Waanyi People (traditional owners of the Century Mining Lease area) and Downer Group's (\$3.7B market capitalisation) mining services division.

New Century has engaged the WRJV to carry out mine design, engineering and costing services as part of an upcoming formal feasibility study which will include any potential Mineral Resource identified at South Block and other currently defined in-situ resources at the Century Zinc Mine. Also, as part of the progression of development for the potential mining of South Block, New Century is initiating a process of obtaining all required traditional owner consents for mining in the South Block area. This process is to be conducted through the Native Title representative body, the Waanyi PBC. Waanyi PBC must comply with its statutory Native Title obligations in relation to matters affecting the Waanyi people and these are separate to WRJV activities.

Commenting on the Agreement signing, Waanyi PBC Chairman Mr Alec Doomadgee said;

*"The Century Zinc Mine has operated on Waanyi land for 17 years and the Waanyi ReGen Joint Venture is already actively engaged on the Mine through ongoing care & maintenance works. This Collaboration Agreement with New Century Resources presents us as Traditional Owners the opportunity to realise further benefits from continued mine activities on Waanyi Land including healing country, sustainable economic development, employment opportunities, and looking after environment and cultural heritage values."*

**Melbourne Office**

Suite 4, Level 9, 350 Collins Street, Melbourne VIC 3000

**Perth Office**

Suite 23, 513 Hay Street, Subiaco WA 6008

PO Box 1311, Subiaco WA 6904

**Phone** +61 (8) 6142 0989

**Email** [info@newcenturyresources.com](mailto:info@newcenturyresources.com)

**Website** [www.newcenturyresources.com](http://www.newcenturyresources.com)

Commenting on the Agreement, New Century Resources Managing Director Mr Patrick Walta said:  
*“The Century Zinc Mine has a long history of engagement with indigenous people through employment and contracting opportunities. Since acquiring the Mine, New Century has developed a strong relationship with both the Joint Venture and the Waanyi PBC, and we are excited by the opportunity to collaborate with these parties in achieving the beneficial outcomes associated with renewed economic activity at the Mine.”*

Commenting on the Agreement signing, WRJV Chairman Mr Warren Mundine said:

*“The Agreement between New Century Resources, traditional owners of the land and Downer represents strong collaboration, designed to realise significant benefits including continued local employment and economic development, as well as the opportunity to leverage the support of Government and other stakeholders.”*



**Figure 1: Collaboration Agreement Signing Ceremony with (left to right) WRJV Chairman Mr Warren Mundine, Waanyi PBC Chairman Mr Alec Doomadgee, Downer Mining General Manager ReGen Mr Ross Browning, New Century Managing Director Mr Patrick Walta and New Century Corporate Director Mr Tolga Kumova**

The Collaboration Agreement also provides for the potential future mining operations to be conducted by the WRJV, pending the outcome of the feasibility work and the parties agreeing suitable commercial mining rates.

Both New Century and the WRJV have also agreed to work together with state and federal government representatives to access funding opportunities which may assist in building low cost and long term in-situ operations at the Century Zinc Mine.

### About the South Block Mineralisation

South Block is located on the southernmost portion of the original Century ore body and directly adjacent to the existing processing plant.

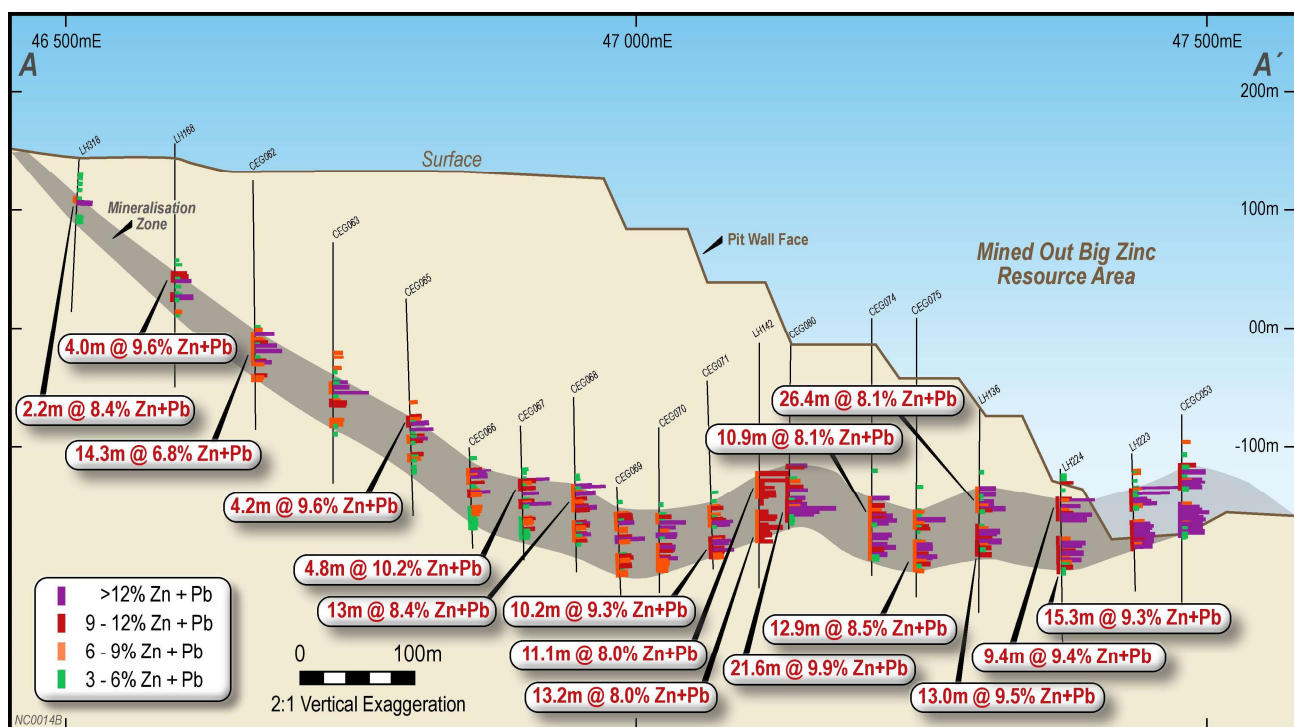


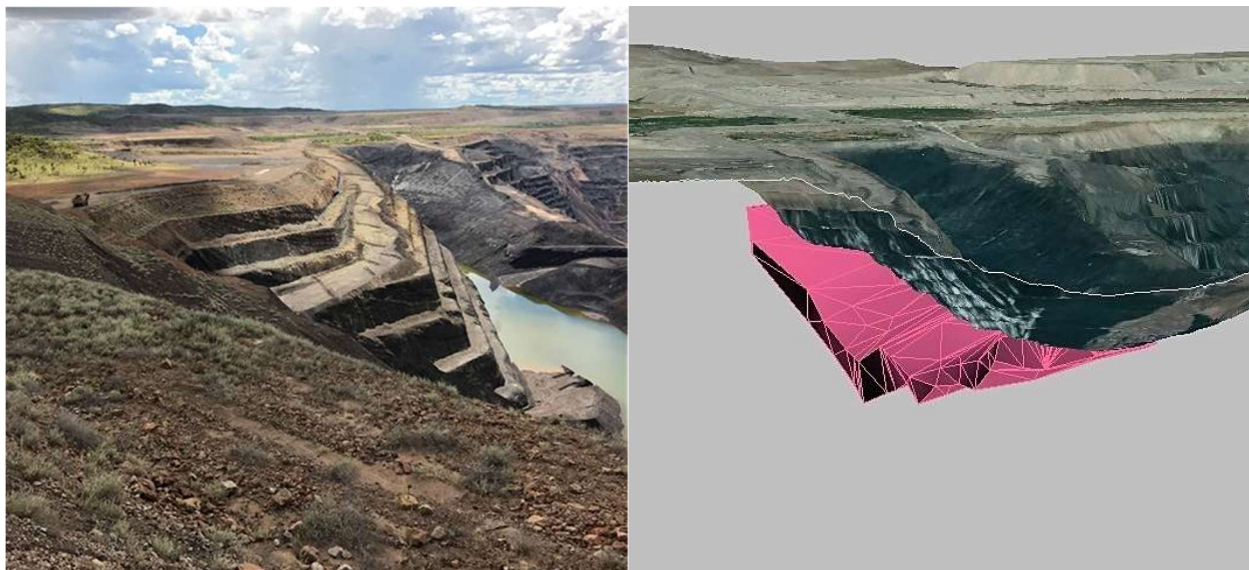
Figure 2: Long section A-A' through the South Block mineralisation (See Figure 3)

The remaining Century-style Zn-Pb-Ag mineralisation in South Block is tabular in geometry and measures approximately 1,000m in length, 115m in width and is up to 30m thick. Mineralisation is encountered 21m below surface at the western extent, and is exposed in the southern wall of the existing open pit.

New Century is now assessing the potential to define a JORC 2012 compliant Mineral Resource over the South Block mineralisation. This may include confirmatory drilling for quality assurance purposes, as well as detailed metallurgical testwork.



*Figure 3: Plan view of long section A-A' through the South Block mineralisation*



*Figure 4: View facing West of the South Block mineralisation*

**For further information please contact:**

**Patrick Walta - Managing Director +61 (08) 6142 0989**

**Melbourne Office**

Suite 4, Level 9, 350 Collins Street, Melbourne VIC 3000

**Perth Office**

Suite 23, 513 Hay Street, Subiaco WA 6008

PO Box 1311, Subiaco WA 6904

**Phone** +61 (8) 6142 0989

**Email** [info@newcenturyresources.com](mailto:info@newcenturyresources.com)

**Website** [www.newcenturyresources.com](http://www.newcenturyresources.com)

### ***Competent Persons Statement***

The information in this report that relates to historical exploration results is based on information compiled by Mr Damian O'Donohue who is a Member of the Australian Institute of Mining and Metallurgy (AusIMM), and full-time employee of New Century Resources Limited. Mr O'Donohue has sufficient experience relevant to the style of mineralisation and type of deposit under consideration, and to the activities being undertaken, to qualify as a Competent Person as defined in the 2012 Edition of the Australasian code for Reporting Exploration Results, Mineral Resources and Ore Reserves (JORC Code). Mr O'Donohue consents to the inclusion in this report of the matters based on the information in the form and context in which it appears.

**Melbourne Office**

Suite 4, Level 9, 350 Collins Street, Melbourne VIC 3000

**Perth Office**

Suite 23, 513 Hay Street, Subiaco WA 6008

PO Box 1311, Subiaco WA 6904

**Phone** +61 (8) 6142 0989

**Email** [info@newcenturyresources.com](mailto:info@newcenturyresources.com)

**Website** [www.newcenturyresources.com](http://www.newcenturyresources.com)