



High-Priority Drill Targets Outlined at Issia

2026-06-04

RNS Number : 9126G

Switch Metals PLC

04 June 2026

Prior to publication, the information contained within this announcement was deemed by the Company to constitute inside information as stipulated under the UK Market Abuse Regulation. With the publication of this announcement, this information is now considered to be in the public domain.

4 June 2026

Switch Metals plc
("Switch Metals" or the "Company")

High-Priority Drill Targets Outlined at Issia and Issue of Equity

Switch Metals (AIM: SWT), the critical metals company focused on battery minerals and technology metals in Côte d'Ivoire, is pleased to present its two priority targets for the upcoming maiden drilling programme at the Issia project (the "**Programme**") and the issue of equity to a consultant.

The Programme is designed to test high-priority hard rock lithium and tantalum targets identified within the Company's district-scale pegmatite corridor with demonstrated tantalum and lithium mineralisation. Recent fieldwork has significantly enhanced the Company's understanding of both targets, with follow-up soil sampling at Kabore outlining a substantial lithium pathfinder anomaly and further supporting the potential for a meaningful hard-rock lithium system at depth.

The Programme is being undertaken in parallel with work to complete the maiden tantalum Mineral Resource Estimate ("MRE") which is focused on the shallow alluvial, eluvial and drainage basin targets at Issia. Depending on laboratory turn around timings, initial batch results are expected to be delivered to the Company in the coming weeks.

Highlights

- Two high priority hard rock drill targets defined at Issia
- Kabore spodumene discovery with grades up to 2.56% Li₂O grades exposed within a 20m x 10m panel, now shown to lie within a 1.3 km soil anomaly along strike
- Zraty tantalum bearing pegmatite target with previously assayed outcrop grab and channel samples up to 1,230 ppm Ta₂O₅
- Approximately 2,500 metres of scout drill planning underway across both targets
- Tantalum MRE work progressing in parallel, with assay interpretation and geological modelling advancing

Targets overview

The Programme targets comprise two previously discovered pegmatites:

- i) **Kabore**; a spodumene lithium-bearing pegmatite; and
- ii) **Zraty**; a tantalum-bearing pegmatite.

Both targets are located within the 112 km² Badinikro permit area of the Issia project (see Figures 1 and 2).

At Kabore, follow-up soil sampling has outlined a 1.3 km rubidium ("Rb") soil anomaly surrounding the previously announced spodumene discovery. The original discovery comprised a 20m x10m exposure returning weathered grab sample grades ranging up to 2.56 % Li₂O via whole rock geochemical assay.

Rubidium, which is a recognised pathfinder element for Lithium-Caesium-Tantalum (LCT) pegmatite exploration and elevated surface geochemistry, may indicate the presence of larger pegmatite bodies at depth. The scale and continuity of the anomaly has significantly enhanced the Company's confidence in the broader prospectivity of the target area (see Figure 2).

At Zraty, previous trenching outlined a east-north-east trending 100 metre-long by 5 to 10 metres wide sub-outcropping pegmatite that yielded tantalum grades up to 1,230 ppm Ta₂O₅ via whole rock chemical assays). The target represents one of the highest-grade hard-rock tantalum occurrences identified to date within the Issia licence portfolio.

Next Steps: RC Drilling

Drill plans have been prepared for both targets, comprising approximately 15 holes at Kabore and 8 holes at Zraty for a combined programme of approximately 2,500 metres. Approximately 1,700 metres are currently planned at Kabore and 800 metres at Zraty.

The scout holes are expected to average approximately 50 to 100 metres in depth on average and are designed to test the down-dip extensions of the known pegmatite outcrop.

Platform preparation is ongoing with rig mobilisation expected shortly.

Karl Akueson, CEO of Switch Metals commented:

"Following completion of our recent capital raise, we are accelerating our work on two high-priority hard rock targets at Issia.

"Kabore has evolved significantly since the original spodumene discovery, with follow-up soil sampling now outlining a 1.3 km anomaly around the mineralised outcrop. Given the improvement in the lithium market and the scale of the anomaly defined at Kabore, we believe this is the right time to drill test Kabore and assess the system at depth.

"The Programme will also test Zraty, one of our highest-grade tantalum-bearing pegmatite targets, highlighting the broader prospectivity of the Issia Project beyond the shallow placer and eluvial resources currently being incorporated into the maiden tantalum MRE.

"Work on the maiden tantalum MRE itself continues in parallel, with assay interpretation and geological modelling progressing. Together, these programmes advance both the near-term development potential of Issia's tantalum resources and the longer-term upside from hard-rock lithium and pegmatite discoveries across our district-scale land package.

"Rig mobilisation is expected shortly and we look forward to updating shareholders on the progress of this promising drill programme."

Figure 1 - Kabore target map with planned drill holes

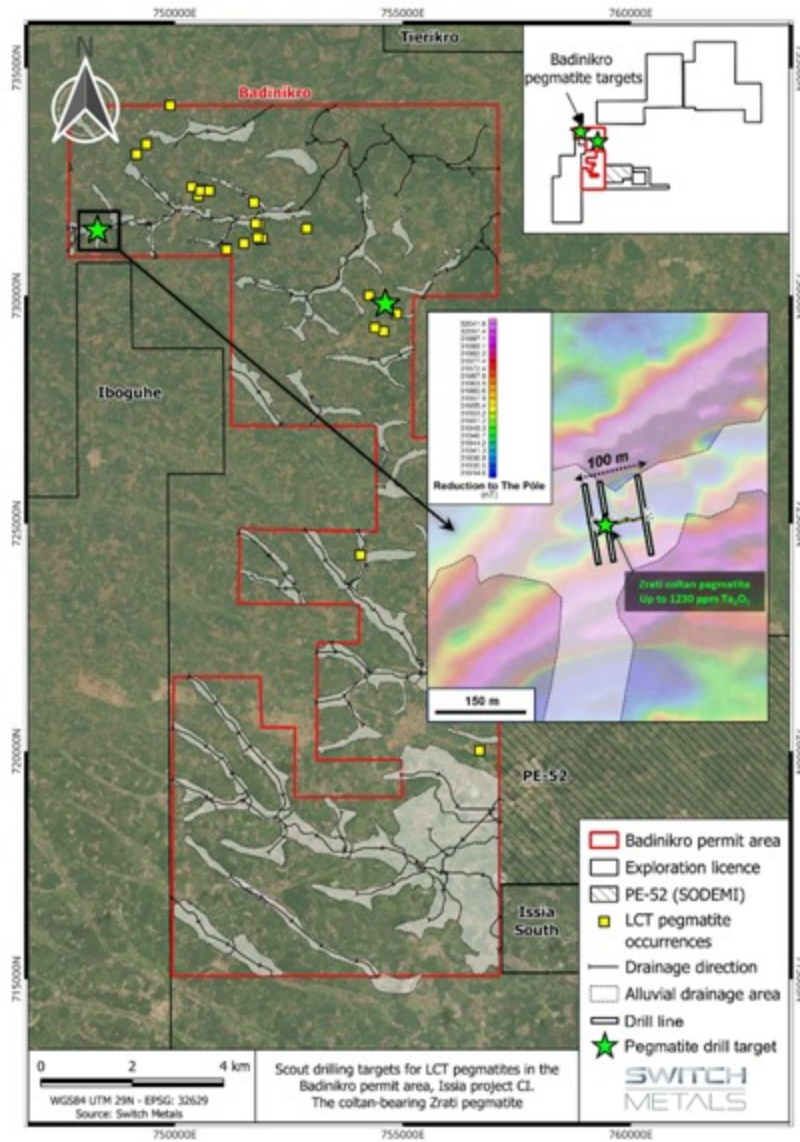
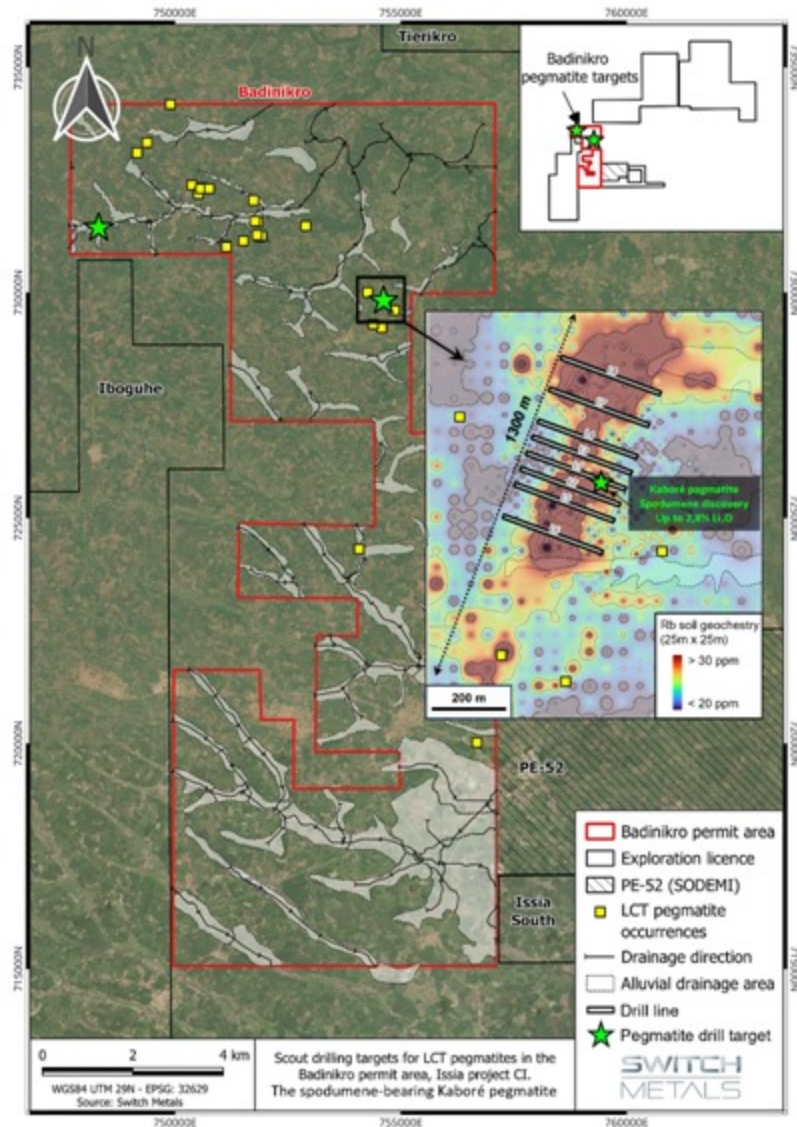


Figure 2 - Zrati target map with planned drill holes



Issue of shares to consultant

The Company has today issued and allotted a total of 94,118 new ordinary shares of 0.85p each in the Company ("**Ordinary Shares**") to a consultant to the Company in settlement of £8,000 of fees due for services provided over the last 12 months at an issue price 8.5p per new Ordinary Share.

An application has been made for the new Ordinary Shares to be admitted to trading on AIM ("**Admission**"). Admission is expected to become effective on or around 9 June 2026.

Upon Admission, the Company's issued ordinary share capital will consist of 131,335,365 Ordinary Shares with one voting right each. The Company does not hold any Ordinary Shares in treasury. Therefore, from Admission the total number of Ordinary Shares and voting rights in the Company will be 131,335,365. With effect from Admission, this figure may be used by Shareholders in the Company as the denominator for the calculations by which they will determine if they are required to notify their interest in, or a change to their interest in, the Company under the FCA's Disclosure Guidance and Transparency Rules.

Qualified Person Statement

The technical information contained in this disclosure has been reviewed and approved by Dr Christophe Bonnetti (PhD, EurGeol), who is a qualified geologist and meets the criteria of a qualified person under the AIM Note for Mining and Oil & Gas Companies. Dr Bonnetti is a Senior Consultant Geologist working for Arethuse Geology Sarl which has been retained by Switch Metals plc to provide technical support.

For further information, please contact:

Switch Metals plc

Karl Akueson, CEO
Andy Yeo, CFO

Via IFC Advisory

Allenby Capital Limited (Nominated Adviser & Joint Broker)

Corporate Finance: Nick Harriss / James Reeve
Sales: Kelly Gardiner / Lauren Wright/ Matt Butlin

+44 (0) 203 328 5656

OAK Securities (Lead Broker)

Jerry Keen, Head of Corporate Broking

jerry.keen@oak-securities.com

Henry Clarke, Head of Sales

henry.clarke@oak-securities.com

+44 (0) 203 973 3678

IFC Advisory Limited (Financial PR and IR)

Tim Metcalfe / Florence Staton

switchmetals@investor-focus.co.uk

+44 (0) 203 934 6632

Glossary

Term	Definition
Alluvial Deposits	Mineral deposits formed by material transported and deposited by rivers or streams.
Assay	A laboratory analysis used to determine the grade and concentration of minerals within a rock or soil sample.
Eluvial Deposits	Mineral accumulations formed by in-place weathering and downslope movement of material without significant transport by water.
Grab Sample	A selective sample collected from exposed rock material, typically used for preliminary exploration purposes.
Hard Rock Lithium	Lithium mineralisation hosted within solid rock formations, typically pegmatites.
LCT Pegmatite	Lithium-Caesium-Tantalum pegmatite; a type of coarse-grained igneous rock commonly associated with lithium and tantalum mineralisation.
Li ₂ O	Lithium oxide, the standard reporting metric for lithium assay grades.
Pathfinder Element	An element whose presence or concentration assists in identifying associated mineral deposits.
Pegmatite	A very coarse-grained igneous rock that can host economically significant lithium, tantalum and rare metal mineralisation.
ppm	Parts per million, a unit used to measure low concentrations of minerals or elements.
RC Drilling	Reverse circulation drilling, a commonly used exploration drilling technique that produces rock chip samples.
REE	Rare Earth Elements, a group of metals used in high-technology and renewable energy applications.
Rubidium (Rb)	A chemical element commonly associated with lithium-bearing pegmatites and used as a geochemical pathfinder in exploration.
Scout Drilling	An initial phase of drilling designed to test the presence, continuity and extent of mineralisation.
Soil Sampling	The collection and analysis of soil to identify geochemical anomalies associated with mineral deposits.

Term	Definition
Spodumene	A lithium-bearing mineral commonly found in pegmatites and an important commercial source of lithium.
Ta ₂ O ₅	Tantalum pentoxide, the standard reporting metric for tantalum assay grades.
Technology Metals	Metals used in advanced technologies, batteries, renewable energy systems and electronics.

About Switch Metals

Switch Metals plc, admitted to trading on AIM in April 2025, is a mining company focused on critical technology and battery minerals in Côte d'Ivoire, one of the most attractive mining jurisdictions in Africa. The Company is the largest land holder covering tantalum, lithium and other critical metals prospects in the country (and potentially in West Africa) today.

Its core assets include Issia (Ta + Nb + Li), Bouaké (Ta + Nb + REE) and Tiassalé (Li) projects. Issia is the current focus for the Company as it exhibits potential for early cash flow through ethical tantalum production from shallow coltan placer deposits with significant scale-up potential (from both placers and hard rock pegmatites).

This information is provided by RNS, the news service of the London Stock Exchange. RNS is approved by the Financial Conduct Authority to act as a Primary Information Provider in the United Kingdom. Terms and conditions relating to the use and distribution of this information may apply. For further information, please contact rns@lseg.com or visit www.rns.com.

RNS may use your IP address to confirm compliance with the terms and conditions, to analyse how you engage with the information contained in this communication, and to share such analysis on an anonymised basis with others as part of our commercial services. For further information about how RNS and the London Stock Exchange use the personal data you provide us, please see our **Privacy Policy**.

END

IOEAKNBKFBKDOAK