



Investor Presentation – Company Making Discovery Potential in NSW

July 2024

IMPORTANT NOTICE AND DISCLAIMER

This presentation does not constitute investment advice. Neither this presentation nor the information contained in it constitutes an offer, invitation, solicitation or recommendation in relation to the purchase or sale of shares in any jurisdiction. This presentation does not take into account any person's particular investment objectives, financial resources or other relevant circumstances and the opinions and recommendations in this presentation are not intended to represent recommendations of particular investments to particular persons. All securities transactions involve risks, which include (among others) the risk of adverse or unanticipated market, financial or political developments.

To the fullest extent permitted by law, G11 Resources Limited (the Company or G11) does not make any representation or warranty, express or implied, as to the accuracy or completeness of any information, statements, opinions, estimates, forecasts or other representations contained in this presentation. No responsibility for any errors or omissions from this presentation arising out of negligence or otherwise is accepted.

This presentation includes forward looking statements. Forward looking statements are only predictions and are subject to risks, uncertainties and assumptions which are outside the control of G11 Resources. These risks, uncertainties and assumptions include commodity prices, currency fluctuations, economic and financial market conditions in various countries and regions, environmental risks and legislative, fiscal or regulatory developments, political risks, project delay or advancement, approvals and cost estimates. Actual values, results or events may be materially different to those expressed or implied in this presentation. Given these uncertainties, readers are cautioned not to place reliance on forward looking statements. Any forward-looking statements in this presentation speak only at the date of issue of this presentation. Subject to any continuing obligations under applicable law and the ASX Listing Rules, G11 Resources does not undertake any obligation to update or revise any information or any of the forward-looking statements in this presentation or any changes in events, conditions or circumstances on which any such forward looking statement is based.

COMPETENT PERSON STATEMENTS

The information in this presentation that relates to Exploration Targets, Exploration Results, Mineral Resources and/or Mineral Reserves is an accurate representation of the available data and is based on information compiled by Mr Richard Buerger who is a Member of the AIG (6031). Mr Buerger is Managing Director and Chief Executive Officer of G11 Resources Limited. Mr. Buerger has sufficient experience which is relevant to the style of mineralisation and type of deposit under consideration and to the activity which he is undertaking to qualify as a Competent Person (CP) as defined in the 2012 Edition of the Joint Ore Reserves Committee (JORC) "Australasian Code for Reporting of Exploration Results, Mineral Resources and Ore Reserves". Mr Buerger consents to the inclusion in the presentation of the matters based on his information in the form and context in which it appears.

The information in this report that relates to the company's Exploration Results is a compilation of results previously released to ASX by G11 Limited (2024/06/04, 2024/06/17, 2022/11/14, 2022/02/08, and 2021/06/18). Mr Buerger consents to the inclusion of these results in this report. The company confirms that it is not aware of any new information or data that materially affects the information included in the original market announcements and that all material assumptions and technical parameters in the market announcements continue to apply and have not materially changed. The company confirms that the form and context in which the competent persons findings are presented have not been materially modified from the original market announcement.

CAUTIONARY NOTE REGARDING RESERVES AND RESOURCES

Generally, since the Company has securities listed on the ASX it is usually required to report reserves and resources in accordance with JORC 2012. You should note that while the Company's reserve and resource estimates comply with the JORC 2012, they may not comply with the relevant guidelines in other countries and, in particular, do not comply with (i) National Instrument 43-101 (Standards of Disclosure for Mineral Projects) of the Canadian Securities Administrators and (ii) Industry Guide 7, which governs disclosures of mineral reserves in registration statements filed with the US Securities and Exchange Commission. Information contained in this presentation describing the Company's mineral deposits may not be comparable to similar information made public by companies subject to the reporting and disclosure requirements of Canadian or US securities laws. In particular, Industry Guide 7 does not recognise classifications other than proven and probable reserves and, as a result, the SEC generally does not permit mining companies to disclose their mineral resources in SEC filings. You should not assume that quantities reported as "resources" will be converted to reserves under the JORC Code or any other reporting regime or that the Company will be able to legally and economically extract them.

CORPORATE OVERVIEW

CAPITAL STRUCTURE

ASX CODE	G11
SHARE PRICE as at 11 July 2024	0.025
SHARES ON ISSUE	749m
OPTIONS	119m ¹
MARKET CAP	18m

TOP SHAREHOLDERS

OLIVERS HILL PTY LTD	15.45%
SRA INVESTMENTS PTY LTD	14.81%
TOP 20	66.36%
OTHER	33.64%
BOARD OF DIRECTORS	16.10%

¹ Options Footnote
30m expiring 30/07/24 – exercisable at \$0.00001
11m expiring 01/09/24 – exercisable at \$0.0001
2m expiring 28/02/25 – performance shares,
76m expiring 30/11/27 – \$0.08 exercise price

BOARD OF DIRECTORS

Martin Donohue	Non-Executive Chairman
Richard Buerger	Managing Director
Simon Peters	Non-Executive Director
Jose Antonio Merino	Non-Executive Director

SHARE PRICE PERFORMANCE



EXPERIENCED TEAM

BOARD OF DIRECTORS

Martin Donohue

Non-Executive Chairman

- Martin has over 20 years' experience in the resources sector and was the founder and managing director of ASX listed Kidman Resources prior to its 2019 takeover by Wesfarmers Ltd.
- He has significant experience in evaluating and financing mineral projects at various stages of development. He was also responsible negotiating and structuring off take agreements with Tesla, Mitsui and LG Chem at Kidman and for forming the joint venture with SQM for the Mt Holland Lithium project.
- During Martins tenure at Kidman Resources it received industry recognition when it was awarded Dealmaker of the Year in 2019 from the Diggers and Dealers Mining Forum.
- Martin is a member of the Australian Institute of Company Directors and is also the principal of Penstock Group, a private commodity focused investment company based in Melbourne that invests in mineral projects and also operates large scale agribusiness assets in south eastern Australia producing protein, grains and oilseeds.

Richard Buerger

Managing Director / CEO

- Richard is a qualified Geologist with over 25 years' experience working in exploration and mining operations predominantly in base and precious metals.
- Richard has previously held senior management roles with junior explorers and developers as well as with Alacer Gold and an International Mining Consultancy working with a range of clients including Nordgold, Goldfields, MMG, Northern Star and Solgold.
- Richard holds a BSc (Hons) from the University of Western Australia and is a Member of Australian Institute of Geoscientists.

Jose Antonio Merino

Non-Executive Director

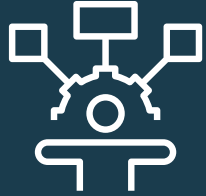
- Jose Antonio has over 15 years' experience in business development and M&A transactions in the natural resources sector.
- He is currently Managing Director of Marimaca Copper Corp, and previously held the role of Senior Manager of Business Development and M&A with Sociedad, Quimica y Minera de Chile SA (SQM).
- Jose Antonio holds a Civil Engineering Degree from Pontificia Universidad Católica de Chile.

Simon Peters

Non-Executive Director

- Simon has over 20 year's experience in natural resource development, public company management and corporate advisory working with Companies including E2M, Rio Tinto, Henry Walker, and Astron Ltd.
- Simon specialises in advancing, financing and developing mineral resource assets and business development.
- He holds a Bachelor of Mining Engineering (Hons) and is a Member of the AusIMM.

GII RESOURCES INVESTMENT HIGHLIGHTS



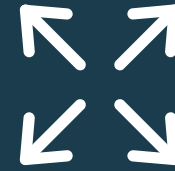
DRILL READY TARGETS

Drilling to extend the +2% Cu core at Peveril and to define additional high-grade Cu-rich shoots over 4.5km of strike. Extensive Cu-Au geochemical anomalies at Black Hills & Cymbric Vale Cu ready to drill.



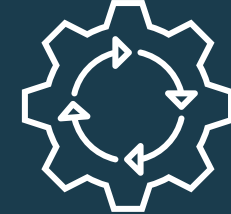
PROVEN TEAM

Highly experienced board and management team with proven capabilities in exploration, development and production of base metal projects. Disciplined expenditure focus (\$ spent in ground) Supportive major shareholders.



UNTESTED POTENTIAL

Significant and highly prospective landholding. Priorities are the Wilandra and Cymbric Vale Corridors, with outcropping and drill-defined mineralisation to extend and additional targets ready to be drilled.



STRONG NEWSFLOW

Rapidly advancing geological and mineral prospectivity model being tested by aggressive and methodical exploration program to generate consistent news flow.

Koonenberry Projects – BIG SYSTEM POTENTIAL



Large 3,300km² land holding in a mining friendly jurisdiction with drill programs fully permitted



Targeting Cu, Zn, Au & Ni in a highly prospective belt



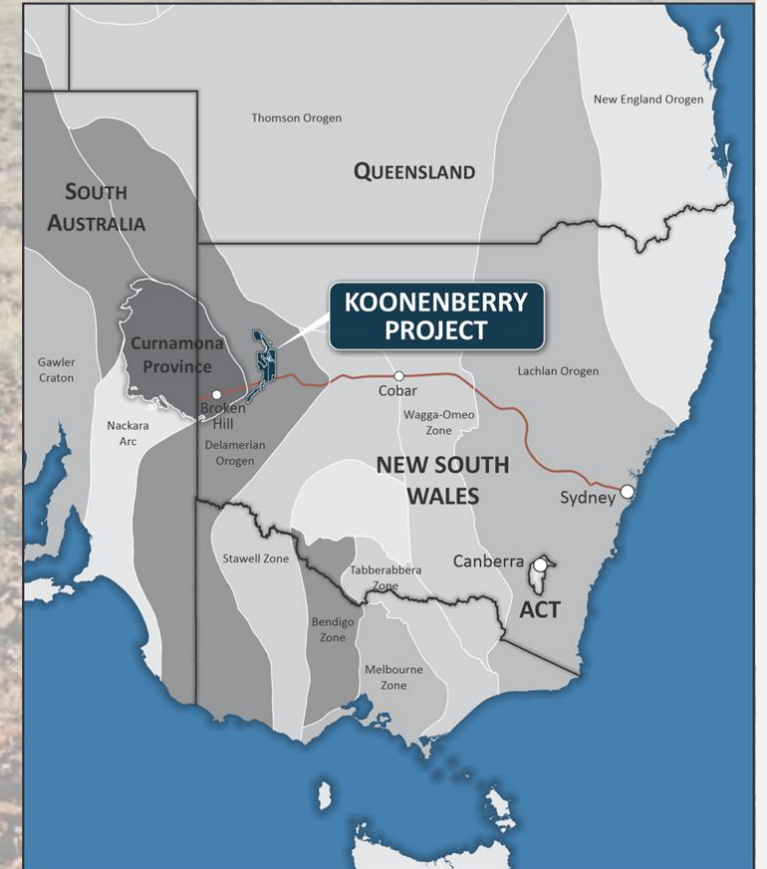
Extensive geochemical sampling, mapping and geophysical data interpretation completed



Drill program ongoing following up high-grade results, with more planned and approved



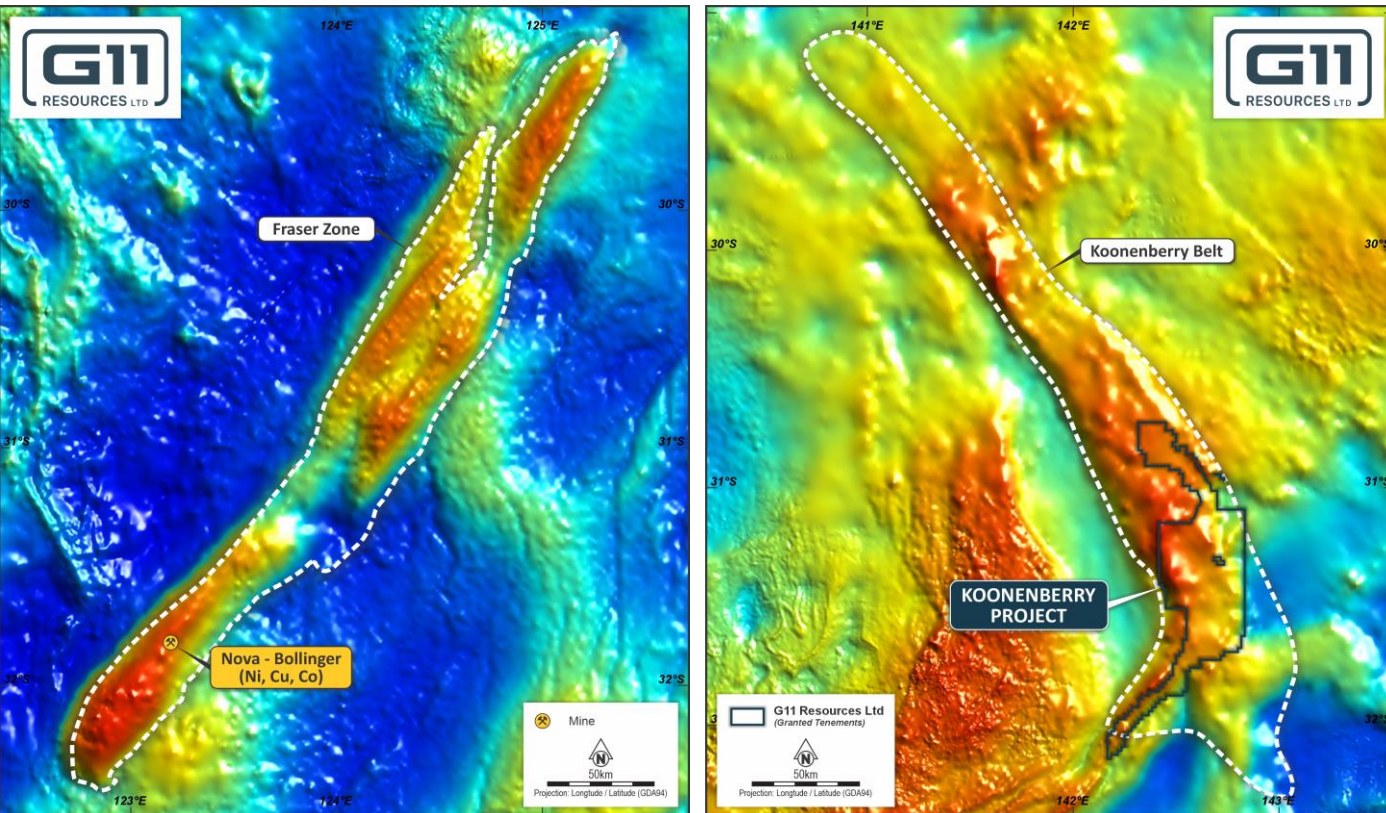
Implementing a systematic, aggressive exploration(drilling) strategy run by a highly qualified and experienced team



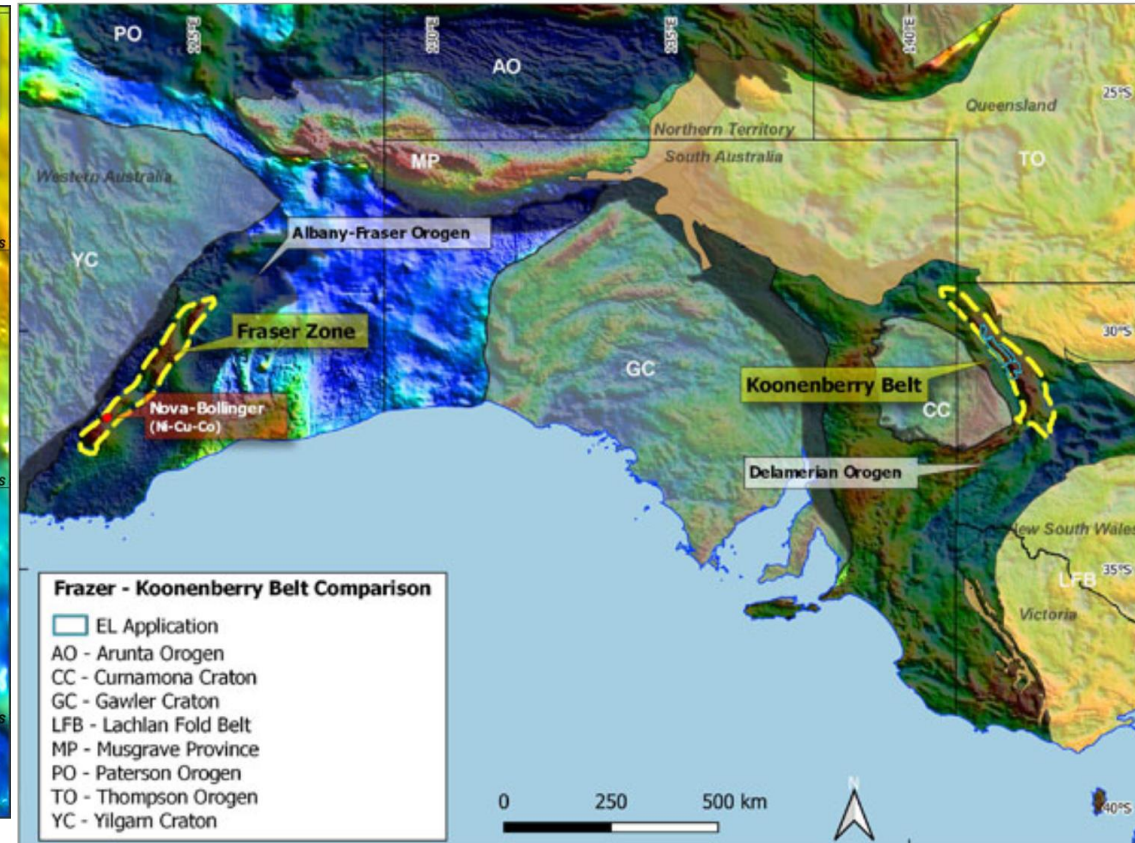
KOONENBERRY BELT

Scale and Cratonic Setting – an analogue for the Fraser Zone, WA

Scale and cratonic margin setting of the Koonenberry Belt is analogous to the Fraser Zone of the Albany Fraser Orogen, which hosts the Nova-Bollinger Ni-Cu-PGE and Tropicana Au deposits.



Fraser – Koonenberry Belt Comparison over Residual Gravity



KOONENBERRY BELT – HIGHLY PROSPECTIVE / UNDER EXPLORED

FOUR DISTINCT PROSPECTIVE CORRIDORS OVER 190km STRIKE

WILANDRA CORRIDOR – DRILLING NOW

- Existing drill defined Cu-Zn mineralisation including 6m @ 3.46% Cu and 5m @ 2.48% Cu¹
- Follow-up drilling underway
- Prospective stratigraphic unit with numerous mineralised structures extends over 75km

CYMBRIC VALE CORRIDOR – DRILL READY

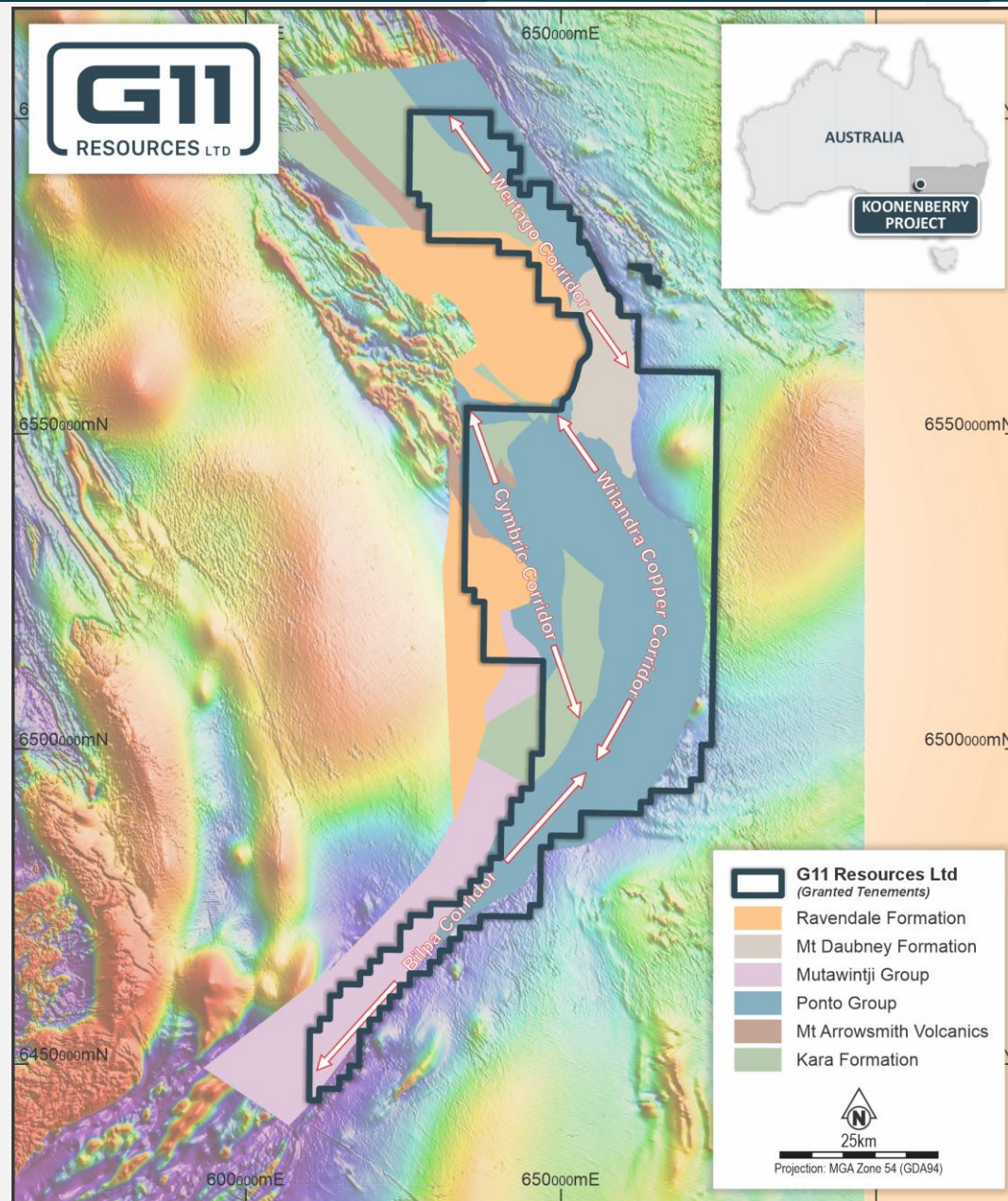
- Potential for multiple mineralisation styles within the 50km strike extent
- Multiple large structures evident in geophysics and mapping with anomalous Cu, Au, Ni & Co in soils and rock chips
- Large, untested magnetic and gravity anomalies

BILPA CORRIDOR

- Numerous mineralised outcrops with historic workings over 65km of strike
- Effectively zero modern-day exploration undertaken

WERTAGO CORRIDOR

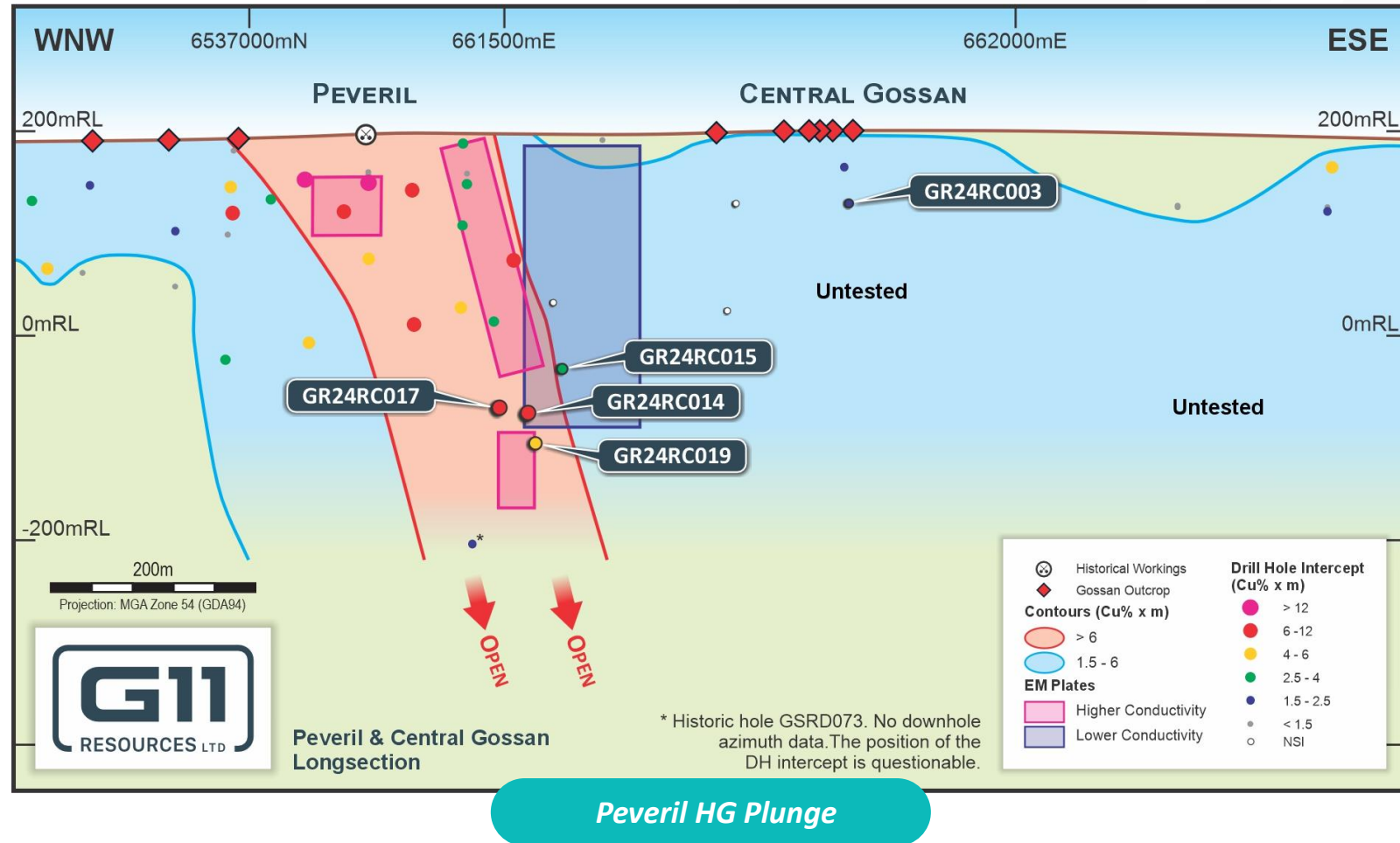
- Right tectonic setting for forming epithermal Au-Ag-Cu-Pb-Zn mineralisation
- Multiple mineralised structures defined over 30km of strike length



WILANDRA CENTRAL – RC Drill Program and EM Results

ASX Announcement 4th June 2024 – High Grade Copper Intercepts at Wilandra Central

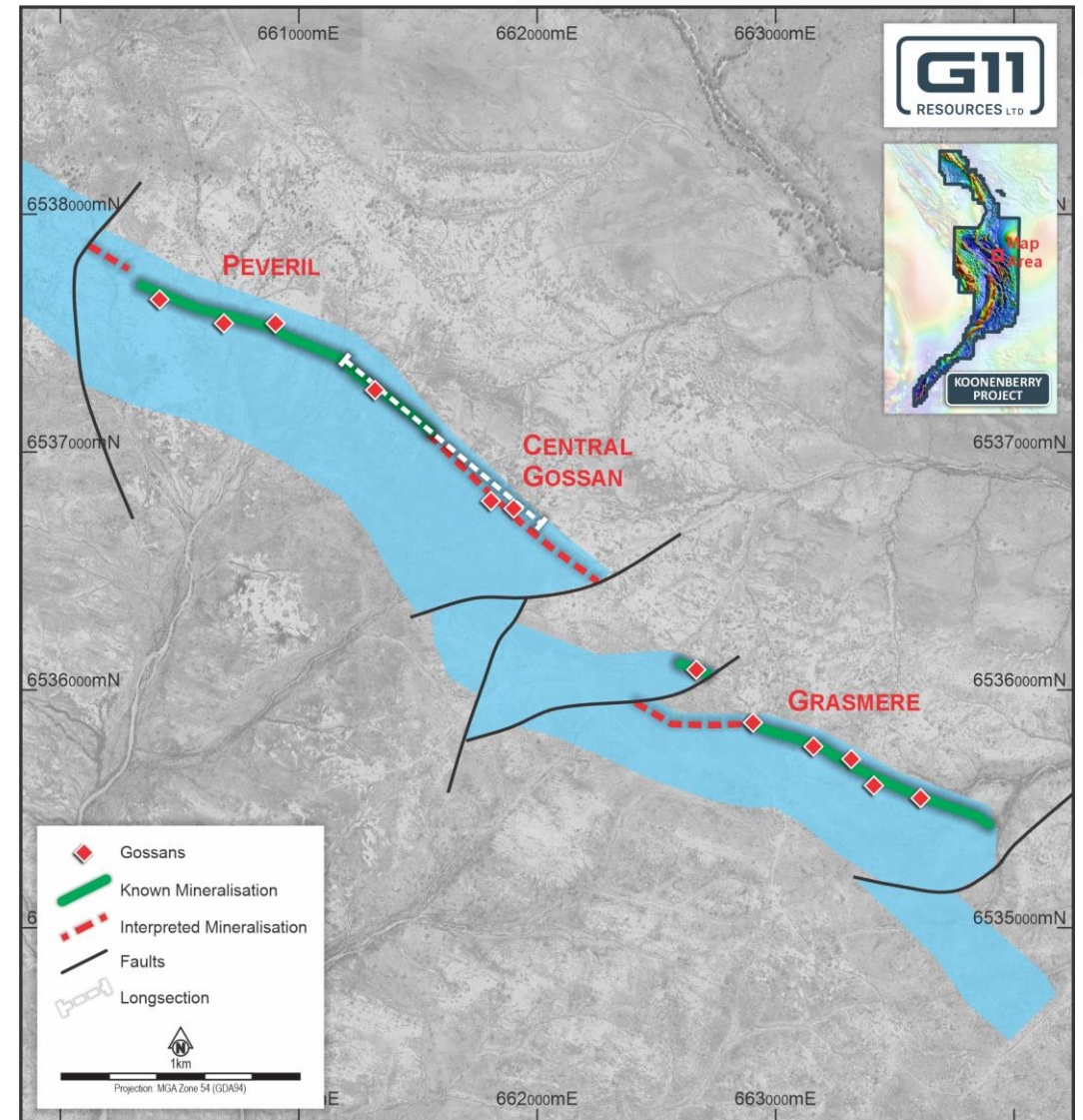
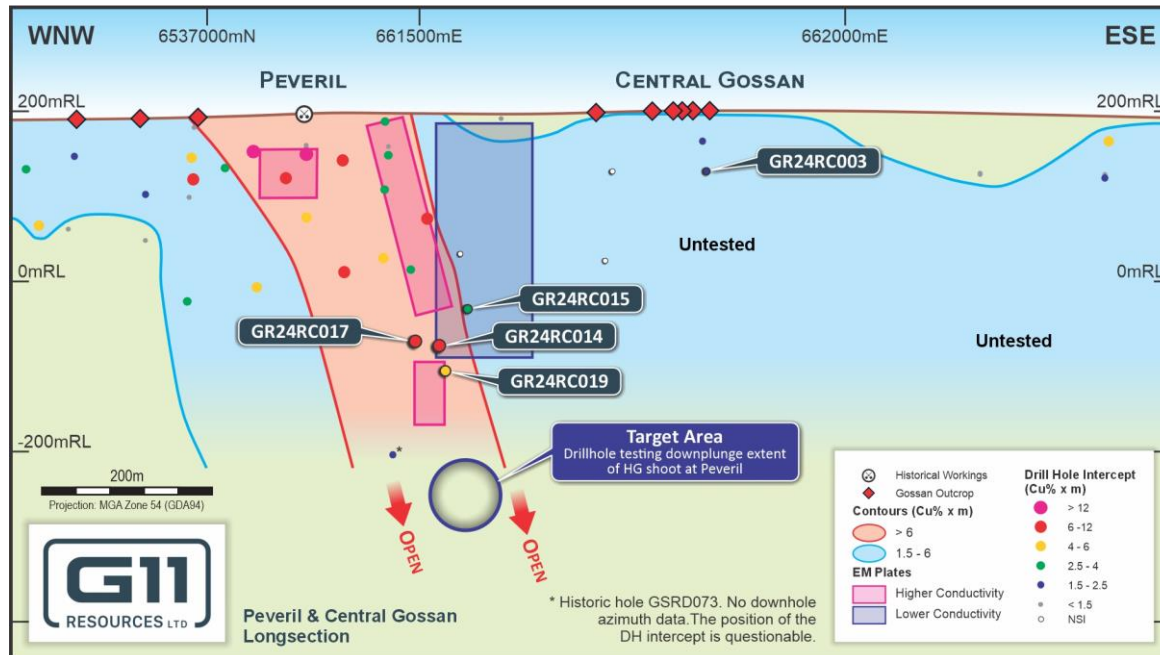
- High-grade Cu plunge extensions confirmed at Peveril, including:
 - 6m @ 3.46% Cu** from 311m in GR24RC014
 - 5m @ 2.48% Cu** from 327m in GR24RC017
 - 3m @ 1.83% Cu** from 361m in GR24RC019
- High grade Cu mineralisation confirmed to more than 300m deep
- Downhole electromagnetic (DHEM) results confirm a distinct electromagnetic conductance signature from the high-grade copper mineralisation
- Structurally-controlled high grade shoot model confirmed for Wilandra Central
- Focus now on finding additional high-grade plunging shoots through drilling and DHEM over the 4.5km strike length
- Drill rig currently on-site drilling follow-up holes**



WILANDRA CENTRAL – Follow-up Drilling and DHEM Currently Underway

Drill rig currently drilling a follow-up program.

- Testing down-plunge extensions of Peveril HG shoot:
 - Aggressive step-out program to define HG copper mineralisation to 500m depth.
- Wide spaced, deep drillholes to identify additional HG shoots:
 - Looking for similar EM signature returned from the Peveril HG shoot.
 - Plan to test the 4.5km strike length from Peveril to Grasmere using drilling and DHEM



WILANDRA CORRIDOR – Priority One Target being Drilled

Mineralised structures identified – currently being drill-tested



Drilling has confirmed strong plunge control to outcropping high-grade Cu mineralisation with depth extended to +300m.
Follow up Drilling In Progress



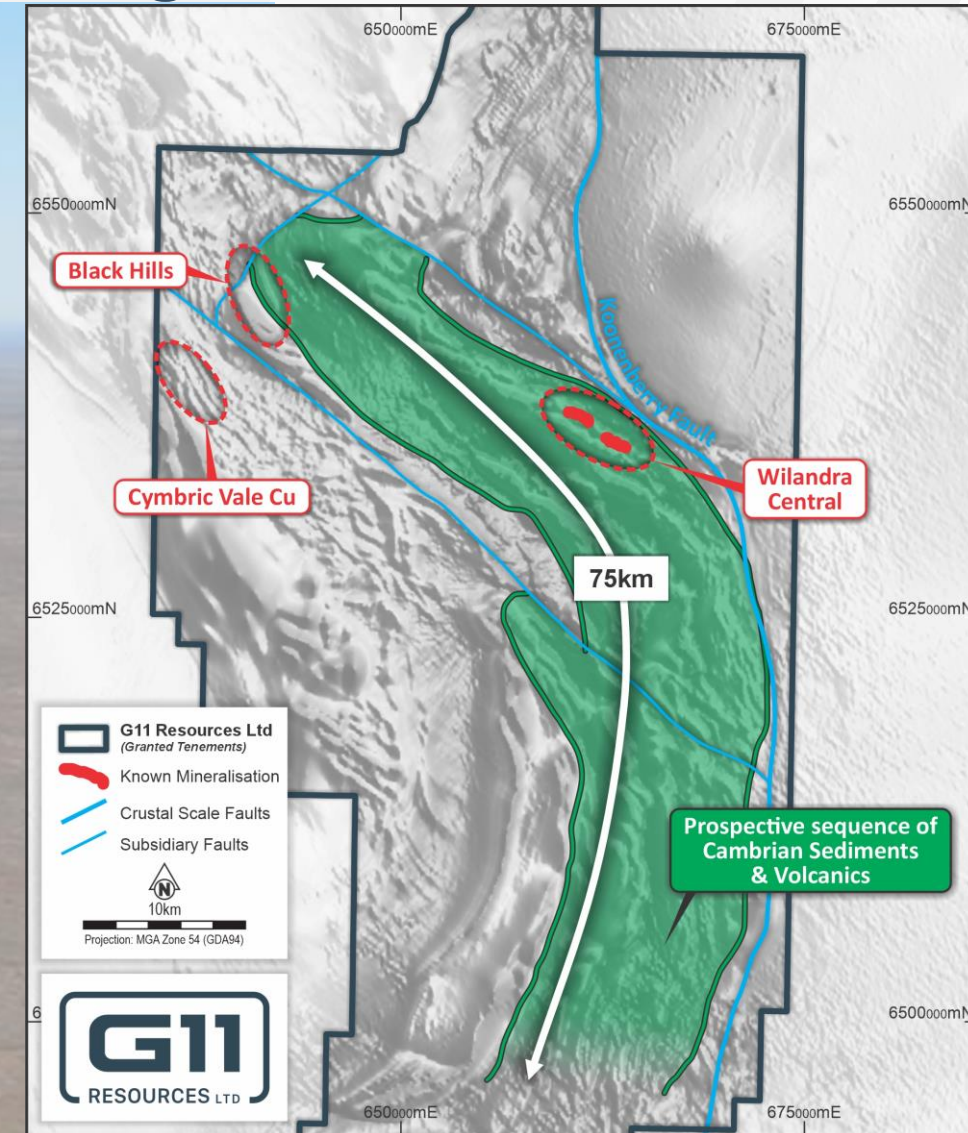
Cu-rich massive sulphide mineralisation returns distinct EM response, with an extensive drilling and DHEM program underway to define additional Cu-rich shoots at **Wilandra Central**



Existing airborne and ground EM datasets currently being remodelled and interpreted to identify additional near surface conductors for follow-up



Aggressive, yet systematic exploration program being implemented to unlock the potential of Wilandra – significant news flow planned



CYMBRIC VALE CORRIDOR – Multiple Drill Ready Cu-Au Targets

Three priority targets identified from geochemical sampling¹, geophysics and drilling:

Black Hills:

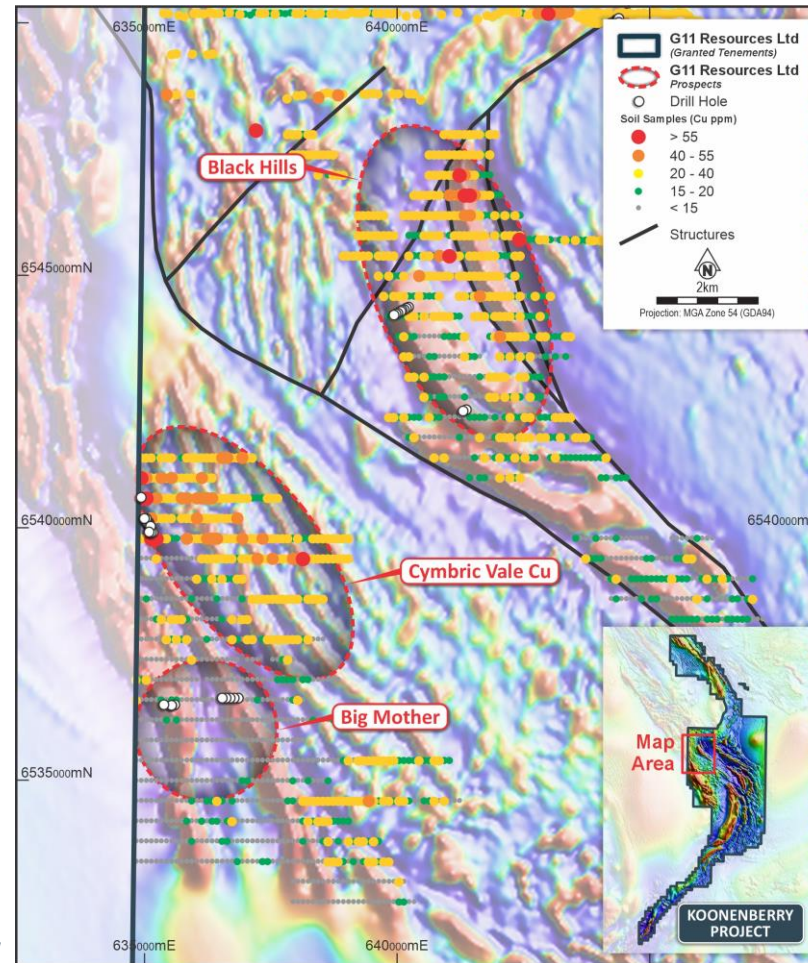
- Anomalous Cu in soil and rock chip associated with fault bound, N-S trending magnetic highs,
- Intersection of two faults coincides with large Au anomalies in soils and rock chips,
- Drill-ready target.

Cymbric Vale Cu:

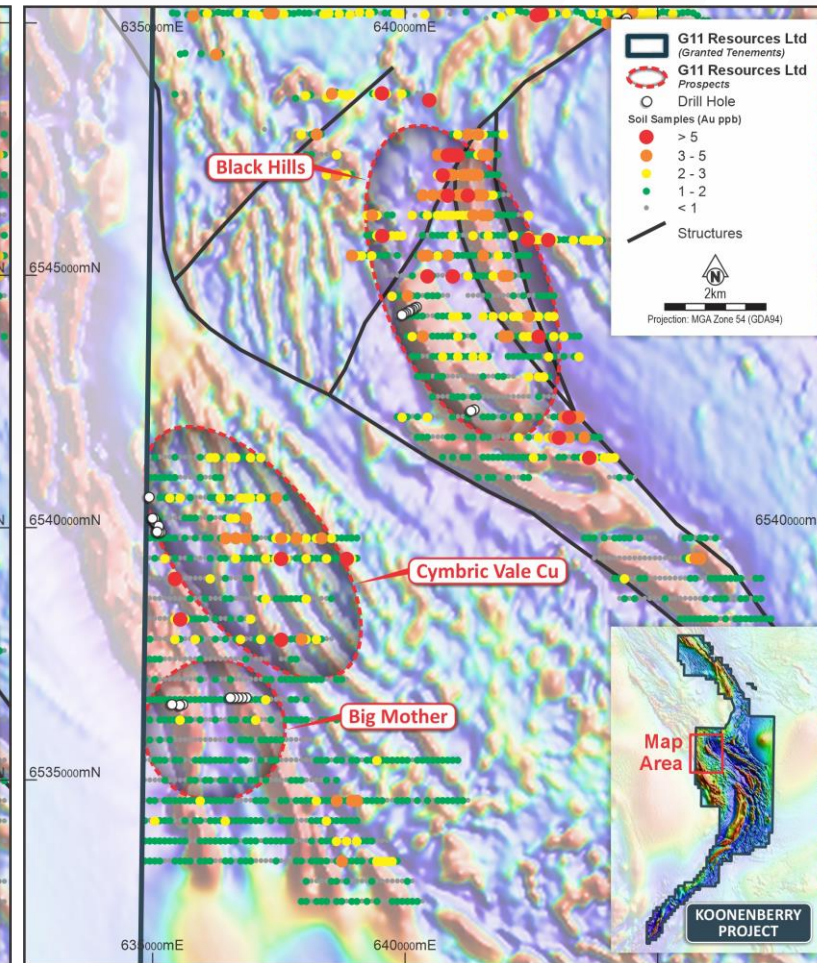
- Structurally controlled Cu mineralisation defined by drilling along with a distinct EM signature over 1km of strike length,
- Coincident geochemical and geophysical anomalies highlighting potential for finding additional parallel Cu-rich structures over an area 3km x 5km.

Big Mother:

- Intense magnetite alteration returned from shallow drill testing of a circular magnetic anomaly, indicating potential for IOCG mineralisation at depth.



Cu soil geochemistry and drillhole collars over Magnetics



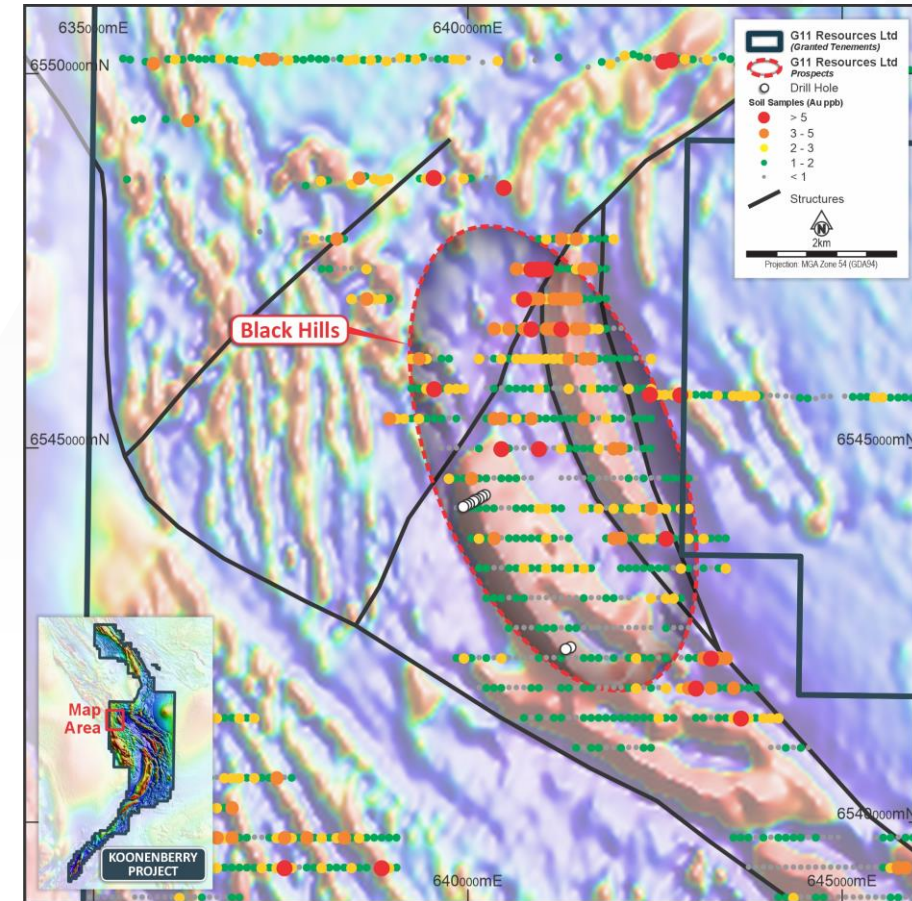
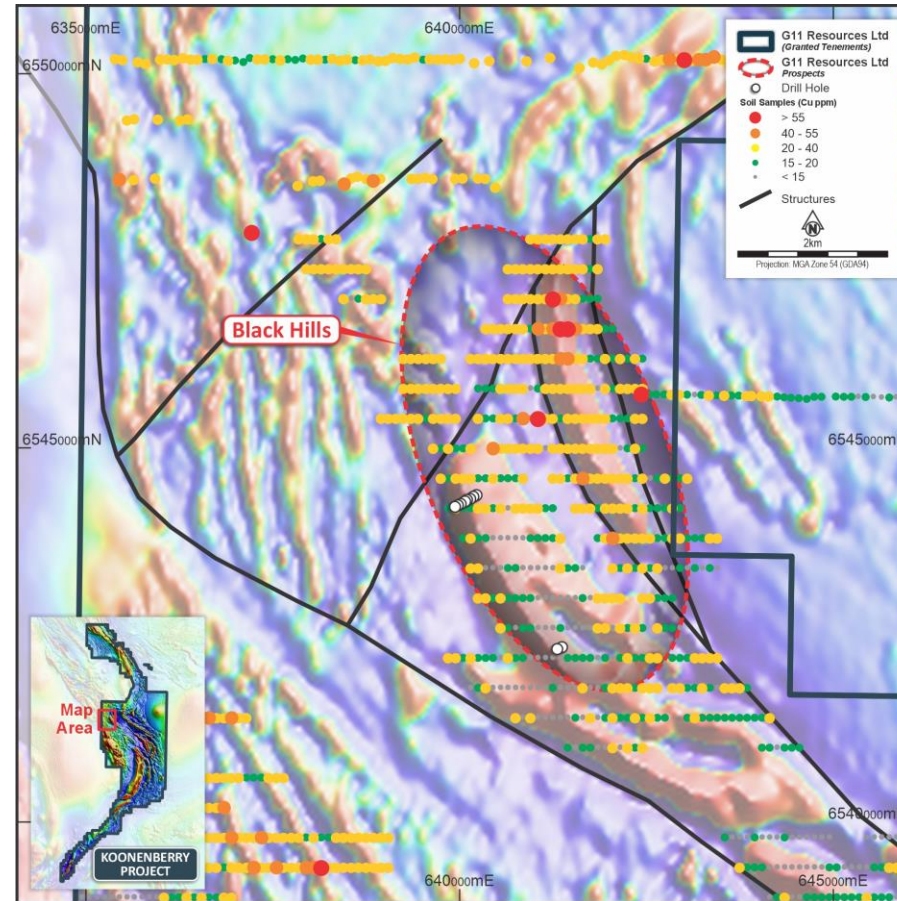
Au soil geochemistry and drillhole collars over Magnetics

¹ See G11 Resources (Odin Metal Ltd), ASX Announcement "Maiden Drill Program to Commence at Black Hills", 17 July 2024 for further information, Competent Person's Consent, material assumptions, and technical parameters concerning historical work at the Koonenberry project. The company confirms that it is not aware of any new information or data that materially affects the information included in this market announcement and that all material assumptions and technical parameters underpinning the estimates in this announcement continue to apply and have not materially changed.

BLACK HILLS PROSPECT – Cu & Au Targets Drill Ready

Complex Structural Interactions

- Numerous Fault Orientations
- Fault intersections are perfect places for orebodies to form
- Extensive Cu & Au anomalism¹
 - NW-SE trending faults wrapping into and intersecting NE-SW faults
 - Cu and Au anomalism concentrated at the intersection
 - Anomalism consistent over a 1.0km wide zone that extends 3.5km along strike
 - Not a single drillhole testing this area.



Intersections of mineralised structures are perfect places for forming big, high-grade deposits.

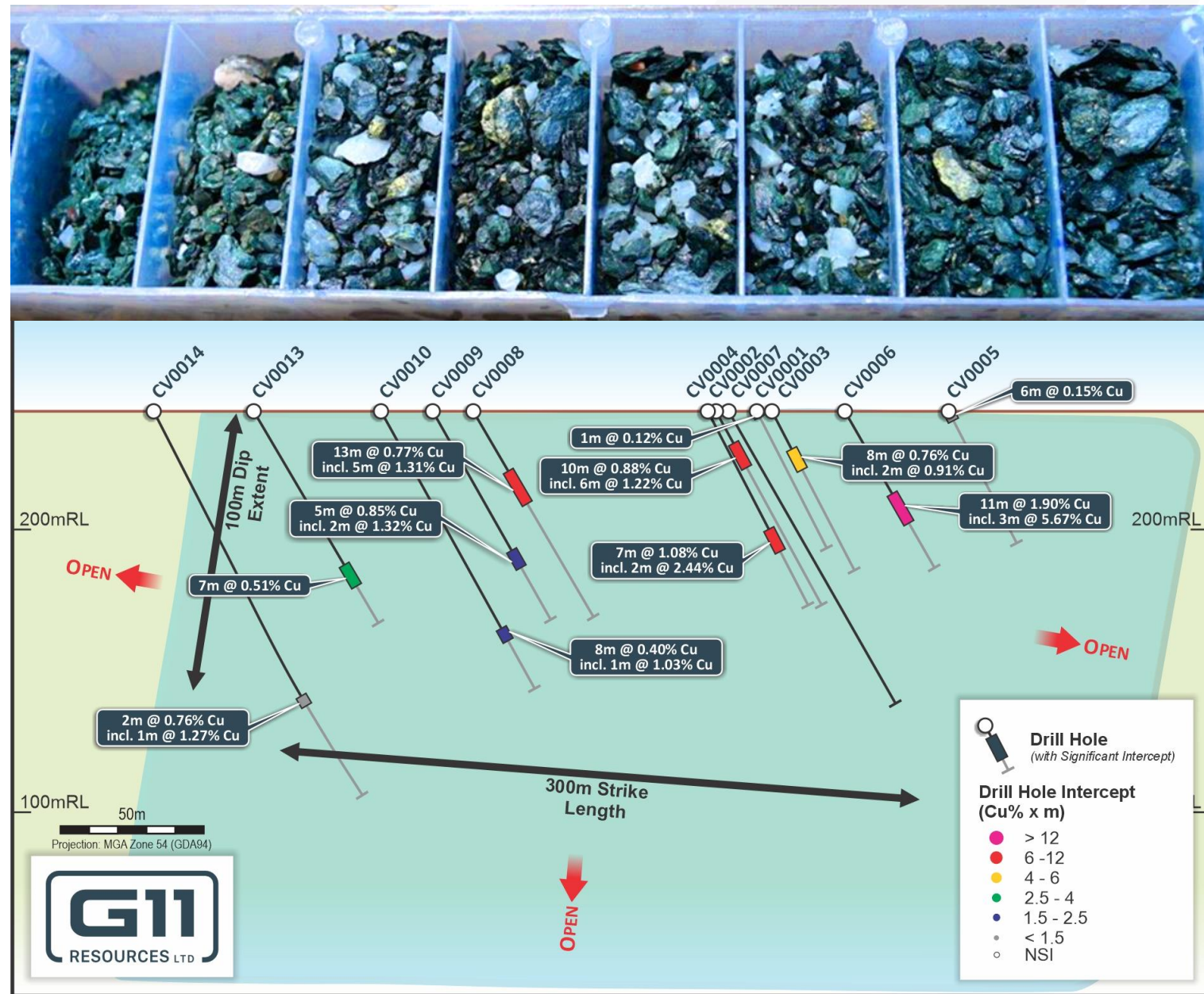
These intersection zones are ready to drill.

CYMBRIC VALE Cu

Structurally Controlled Cu-rich Veins

2021 drill-testing of outcropping veins²:

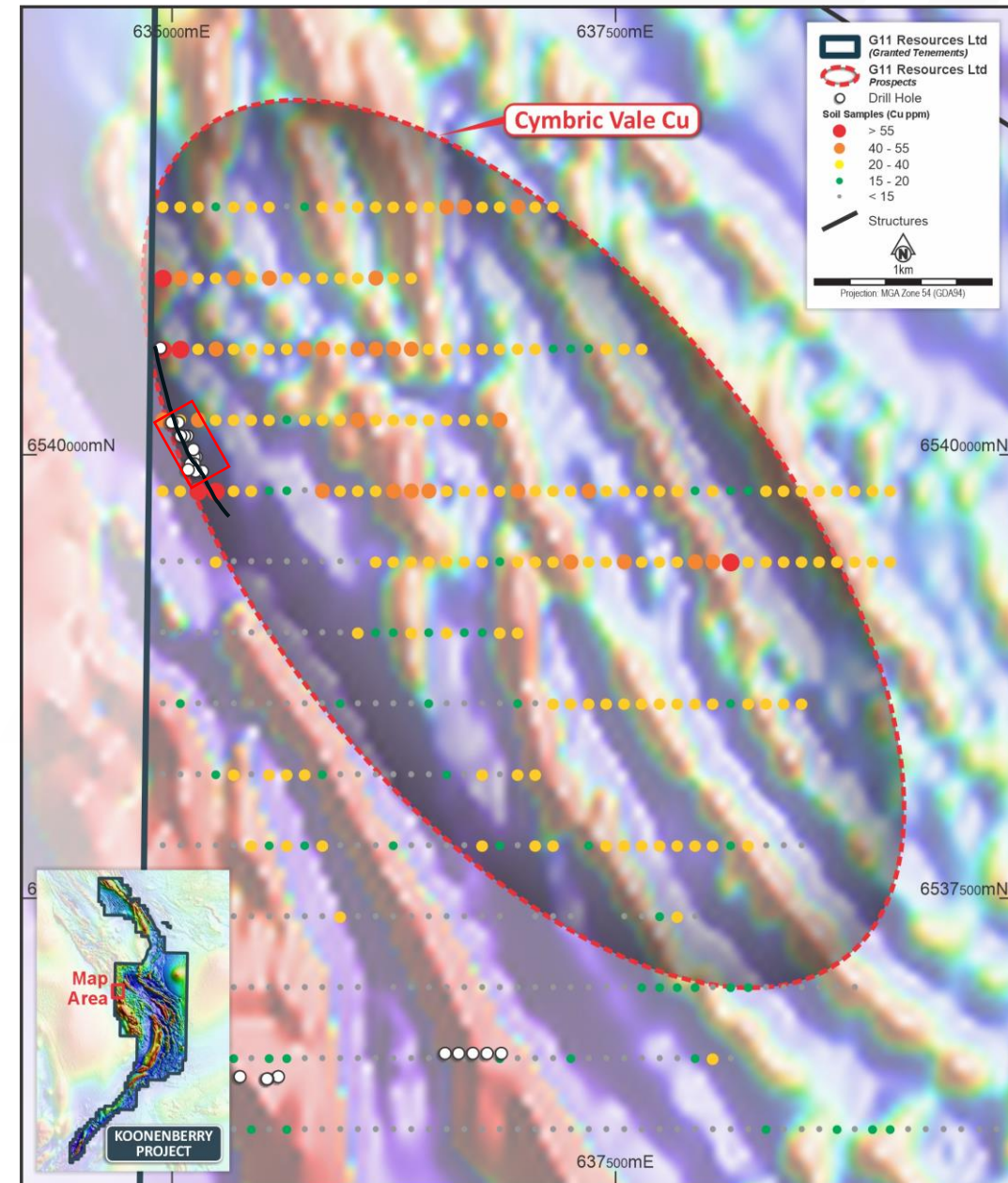
- 300m drill-tested with over 1km extent defined in MLEM.
- Broad Zones of Cu mineralisation with a HG core including:
 - 11m @ 1.90% Cu including 6m @ 3.20% Cu (CV0006) from 37m,
 - 7m @ 1.08% Cu (CV0004) from 52m.
- Best intersection is from the southernmost hole currently drilled
- Mineralisation is open in all directions.
- MLEM can identify Cu-rich sulphides close to surface.
- Structural interpretation and follow-up MLEM program planned.
- Previous owners constrained by a lack of capital to advance this prospect.



CYMBRIC VALE Cu

Structurally Controlled Cu-rich Veins over 3km x 5km

- Extensive Cu soil and rock chip anomalies¹ coincident with geophysical anomalies.
- Cu-rich structures outcrop on the western edge of the zone.
- Drilling has only tested a very small section of the anomalies.
- Numerous EM and Magnetic anomalies associated with the elevated Cu soils.
- Potential for multiple, thick, shallow Cu-rich structures.



¹ See G11 Resources (Odin Metal Ltd), ASX Announcement "Maiden Drill Program to Commence at Black Hills", 17 July 2024 for further information, Competent Person's Consent, material assumptions, and technical parameters concerning historical work at the Koonenberry project. The company confirms that it is not aware of any new information or data that materially affects the information included in this market announcement and that all material assumptions and technical parameters underpinning the estimates in this announcement continue to apply and have not materially changed.

2024 – Ramping up Exploration work


G11 have built a Pipeline of multiple Drill-Ready prospects

Exploration Plan – 2024/2025

- **Drilling underway** to confirm additional high-grade Cu plunging shoots at Wilandra Central (July and August 2024)
- Use existing airborne EM to identify additional near-surface massive sulphide conductors within Wilandra and Cymbric Vale Corridors (July 2024)
- Accelerate Cymbric Vale Cu, Black Hills and Big Mother exploration at Cymbric Vale with **drilling**, mapping and ground EM commencing in August 2024
- Accelerate Rainbow Tank and Basalt Ridge exploration at Wilandra with ground EM (September 2024) and **drilling** (December 2024)



APPENDICES

 Level 21, 459 Collins Street Melbourne

 www.G11Resources.com.au

FOLLOW US



KOONENBERRY BELT

PROSPECTIVITY EXPLAINED

Prospective for Cu, Au, Ni, Pb, Zn, Ag, Co and PGE

Neo-Proterozoic

- Deposition of the Mt Arrowsmith Volcanics including mafic-ultramafic sequences rich in Ni-Cu-Co (+/- PGE)

Cambrian

- Deposition of the Ponto Group in the right setting for VMS deposits to form rich in Cu-Pb-Zn-Ag
- Delamerian Orogeny causing remobilisation of Cu (+/- Zn) and enrichment in structural traps

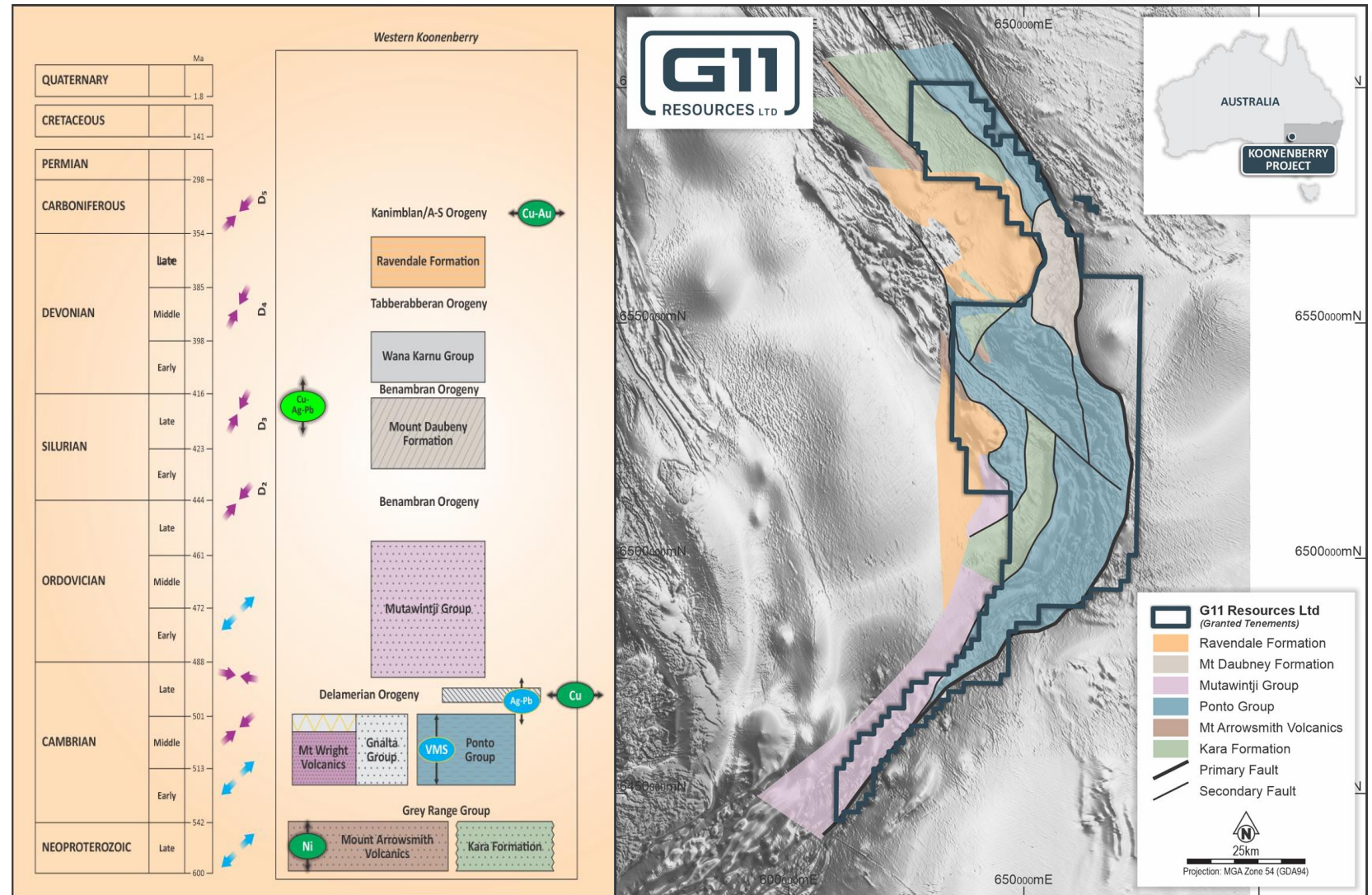
Siluro-Devonian

- Epithermal Cu-Ag-Pb forming in an extensional environment along the Koonenberry Fault within the Mt Daubney Basin

Carboniferous

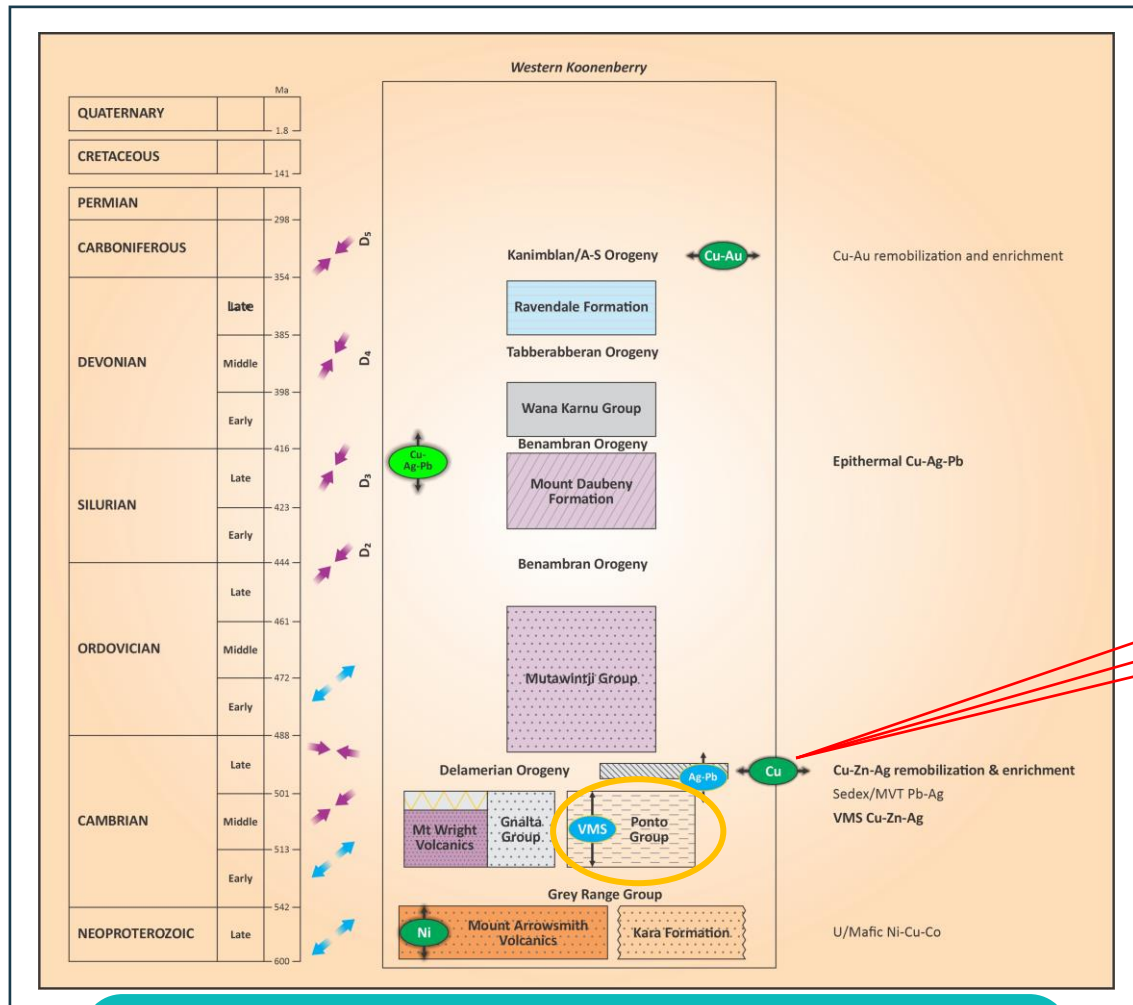
- Yet more deformation with further remobilisation and enrichment of Cu & Au

Drilling Underway



WILANDRA CORRIDOR

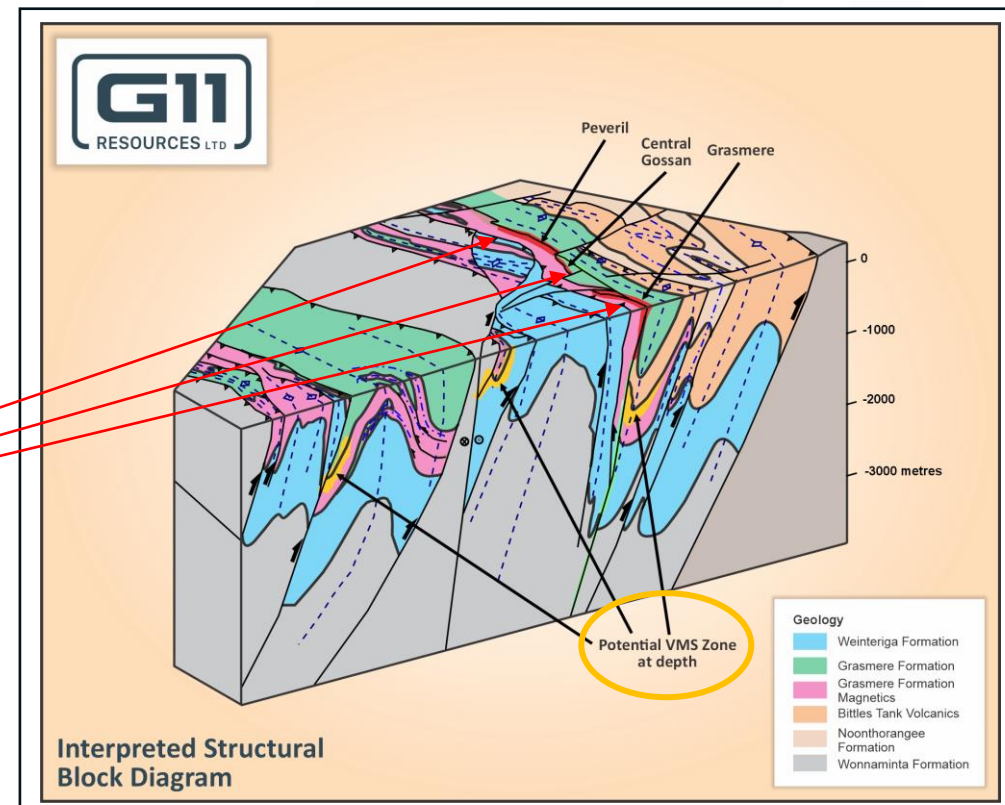
MULTIPLE MINERALISING EVENTS WITHIN WILANDRA



Koonenberry Tectonics & Metallogensis

Potential for multiple, structurally controlled, high-grade remobilised massive sulphide deposits

- VMS Formation during Early Cambrian Rifting
- Remobilisation and enrichment of Cu-Zn during Delamerian Orogen



Geological Model for Wilandra Corridor

WILANDRA COPPER CORRIDOR – Additional Prospects

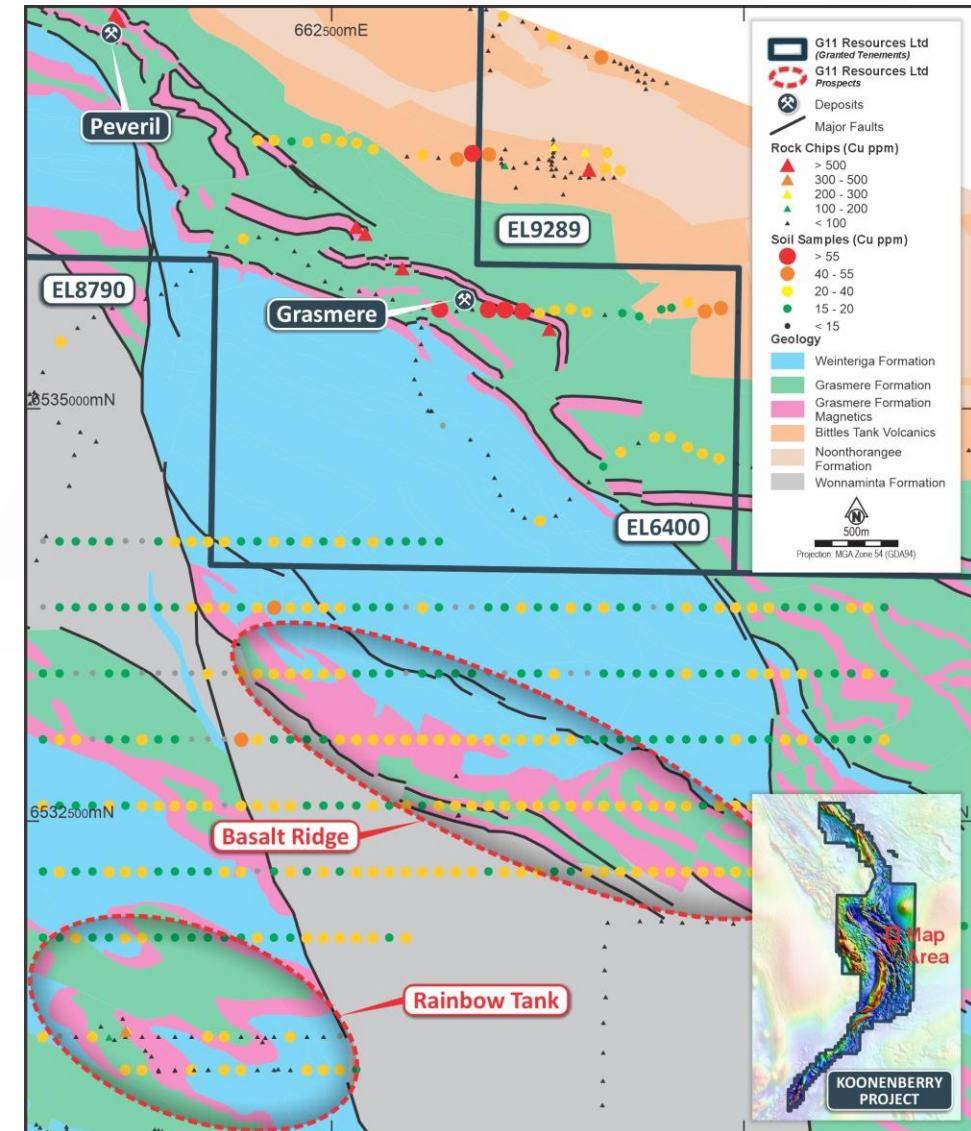
The same prospective stratigraphy that hosts Wilandra Central has been mapped adjacent to large-scale faults (fluid source)

• Rainbow Tank

- Anomalous Cu in soils¹, rock chips and shallow historic percussions holes,
- Folded sequence of the same rocks that host Wilandra Central to the north,
- Folds and faults increases likelihood of mineralisation within dilation zones in fold hinges and associated faults.

• Basalt Ridge

- Anomalous Cu in soils within the same prospective rocks wedged between two major fault zones,
- Structural complexity and proximity to major fluid conduits increases likelihood of forming major dilational positions for Cu-rich fluids to deposit into.



Cu soil and rock chip geochemistry over geological interpretation