



Investor Presentation

October 2024

IMPORTANT NOTICE AND DISCLAIMER

This presentation does not constitute investment advice. Neither this presentation nor the information contained in it constitutes an offer, invitation, solicitation or recommendation in relation to the purchase or sale of shares in any jurisdiction. This presentation does not take into account any person's particular investment objectives, financial resources or other relevant circumstances and the opinions and recommendations in this presentation are not intended to represent recommendations of particular investments to particular persons. All securities transactions involve risks, which include (among others) the risk of adverse or unanticipated market, financial or political developments.

To the fullest extent permitted by law, G11 Resources Limited (the Company or G11) does not make any representation or warranty, express or implied, as to the accuracy or completeness of any information, statements, opinions, estimates, forecasts or other representations contained in this presentation. No responsibility for any errors or omissions from this presentation arising out of negligence or otherwise is accepted.

This presentation includes forward looking statements. Forward looking statements are only predictions and are subject to risks, uncertainties and assumptions which are outside the control of G11 Resources. These risks, uncertainties and assumptions include commodity prices, currency fluctuations, economic and financial market conditions in various countries and regions, environmental risks and legislative, fiscal or regulatory developments, political risks, project delay or advancement, approvals and cost estimates. Actual values, results or events may be materially different to those expressed or implied in this presentation. Given these uncertainties, readers are cautioned not to place reliance on forward looking statements. Any forward-looking statements in this presentation speak only at the date of issue of this presentation. Subject to any continuing obligations under applicable law and the ASX Listing Rules, G11 Resources does not undertake any obligation to update or revise any information or any of the forward-looking statements in this presentation or any changes in events, conditions or circumstances on which any such forward looking statement is based.

COMPETENT PERSON STATEMENTS

The information in this presentation that relates to Exploration Targets, Exploration Results, Mineral Resources and/or Mineral Reserves is an accurate representation of the available data and is based on information compiled by Mr Richard Buerger who is a Member of the AIG (6031). Mr Buerger is Managing Director and Chief Executive Officer of G11 Resources Limited. Mr. Buerger has sufficient experience which is relevant to the style of mineralisation and type of deposit under consideration and to the activity which he is undertaking to qualify as a Competent Person (CP) as defined in the 2012 Edition of the Joint Ore Reserves Committee (JORC) "Australasian Code for Reporting of Exploration Results, Mineral Resources and Ore Reserves". Mr Buerger consents to the inclusion in the presentation of the matters based on his information in the form and context in which it appears.

The information in this report that relates to the company's Exploration Results is a compilation of results previously released to ASX by G11 Limited (2024/09/10, 2024/10/04, 2024/06/04, and 2021/02/18). Mr Buerger consents to the inclusion of these results in this report. The company confirms that it is not aware of any new information or data that materially affects the information included in the original market announcements and that all material assumptions and technical parameters in the market announcements continue to apply and have not materially changed. The company confirms that the form and context in which the competent persons findings are presented have not been materially modified from the original market announcement.

CAUTIONARY NOTE REGARDING RESERVES AND RESOURCES

Generally, since the Company has securities listed on the ASX it is usually required to report reserves and resources in accordance with JORC 2012. You should note that while the Company's reserve and resource estimates comply with the JORC 2012, they may not comply with the relevant guidelines in other countries and, in particular, do not comply with (i) National Instrument 43-101 (Standards of Disclosure for Mineral Projects) of the Canadian Securities Administrators and (ii) Industry Guide 7, which governs disclosures of mineral reserves in registration statements filed with the US Securities and Exchange Commission. Information contained in this presentation describing the Company's mineral deposits may not be comparable to similar information made public by companies subject to the reporting and disclosure requirements of Canadian or US securities laws. In particular, Industry Guide 7 does not recognise classifications other than proven and probable reserves and, as a result, the SEC generally does not permit mining companies to disclose their mineral resources in SEC filings. You should not assume that quantities reported as "resources" will be converted to reserves under the JORC Code or any other reporting regime or that the Company will be able to legally and economically extract them.

CORPORATE OVERVIEW

CAPITAL STRUCTURE

ASX CODE	G11
SHARE PRICE as at 17 October 2024	0.019
SHARES ON ISSUE	931m
OPTIONS	122.5m ¹
MARKET CAP	18m

TOP SHAREHOLDERS

OLIVERS HILL PTY LTD	15.49%
SRA INVESTMENTS PTY LTD	14.74%
TOP 20	61.60%
OTHER	38.40%
BOARD OF DIRECTORS	16.85%

¹ Options Footnote

76m expiring 30/11/27 – \$0.08 exercise price
22.5m expiring 09/10/27 - \$0.06 exercise price
2m expiring 28/02/25 – performance shares

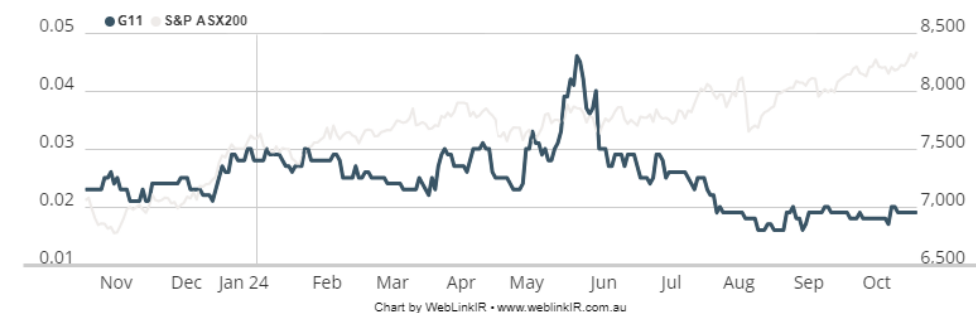
10m expiring 15/11/25 – exercisable at between \$0.06 – 0.12
12m expiring 09/10/26 – performance shares

BOARD OF DIRECTORS

Martin Donohue	Non-Executive Chairman
Richard Buerger	Managing Director
Simon Peters	Non-Executive Director
Jose Antonio Merino	Non-Executive Director

SHARE PRICE PERFORMANCE

CURRENT PRICE CHART



EXPERIENCED TEAM

BOARD OF DIRECTORS

Martin Donohue

Non-Executive Chairman

- Martin has over 20 years' experience in the resources sector and was the founder and managing director of ASX listed Kidman Resources prior to its 2019 takeover by Wesfarmers Ltd.
- He has significant experience in evaluating and financing mineral projects at various stages of development. He was also responsible negotiating and structuring off take agreements with Tesla, Mitsui and LG Chem at Kidman and for forming the joint venture with SQM for the Mt Holland Lithium project.
- During Martins tenure at Kidman Resources it received industry recognition when it was awarded Dealmaker of the Year in 2019 from the Diggers and Dealers Mining Forum.

Richard Buerger

Managing Director / CEO

- Richard is a qualified Geologist with over 25 years' experience working in exploration and mining operations predominantly in base and precious metals.
- Richard has previously held senior management roles with junior explorers and developers as well as with Alacer Gold and an International Mining Consultancy working with a range of clients including Nordgold, Goldfields, MMG, Northern Star and Solgold.
- Richard holds a BSc (Hons) from the University of Western Australia and is a Member of Australian Institute of Geoscientists.

Jose Antonio Merino

Non-Executive Director

- Jose Antonio has over 15 years' experience in business development and M&A transactions in the natural resources sector.
- He is currently Managing Director (Chile) and CFO of Marimaca Copper Corp, and previously held the role of Senior Manager of Business Development and M&A with Sociedad, Quimica y Minera de Chile SA (SQM).
- Jose Antonio holds a Civil Engineering Degree from Pontificia Universidad Católica de Chile.

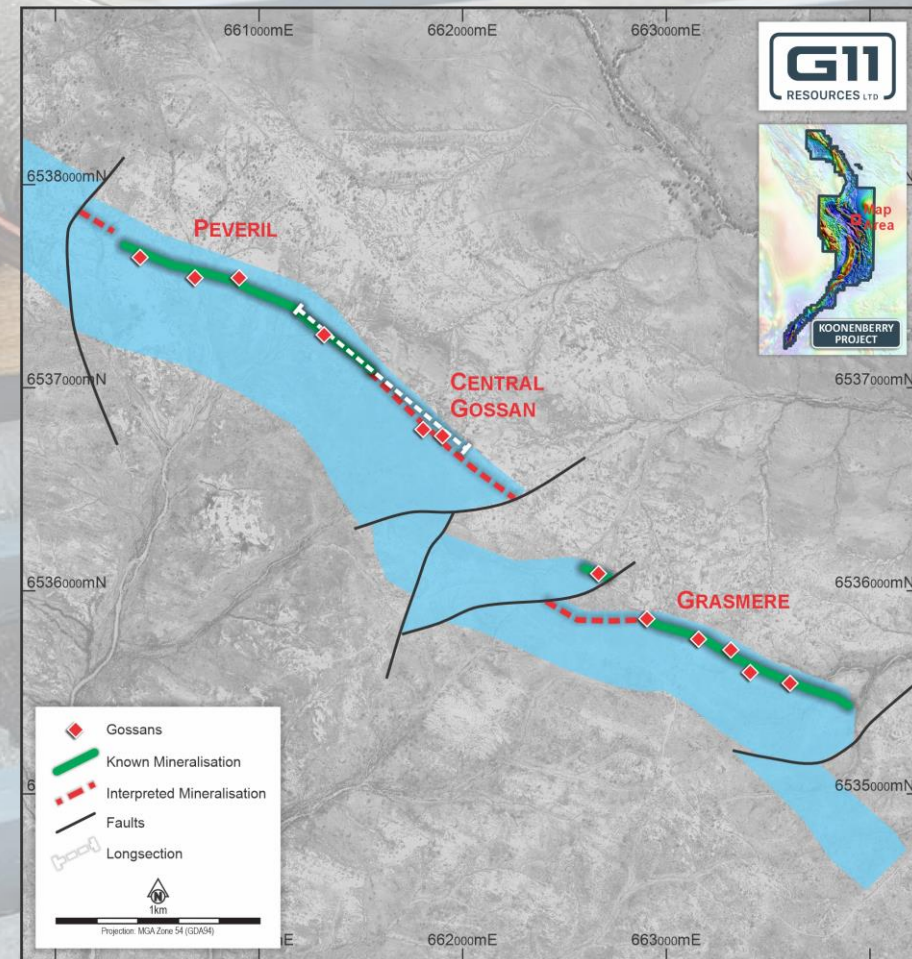
Simon Peters

Non-Executive Director

- Simon has over 20 year's experience in natural resource development, public company management and corporate advisory working with Companies including E2M, Rio Tinto, Henry Walker, and Astron Ltd.
- Simon specialises in advancing, financing and developing mineral resource assets and business development.
- He holds a Bachelor of Mining Engineering (Hons) and is a Member of the AusIMM.

WILANDRA – VMS Copper Zone Now Growing in Scale

- **Grasmere – Peveril System: 4km long and remains open with over 85% drill intercepts only within 200m of surface**
- **Step Change – New VMS Copper Zone discovered at depth through the successful application of DHEM**
- Initial step out drilling from Q1 returned high-grade Cu extensions at Peveril¹, including:
 - **6m @ 3.46% Cu** from 311m in GR24RC014
 - **5m @ 2.48% Cu** from 327m in GR24RC017
- Historic Intercepts in this zone include **7m @ 3.04% Cu** from 53m in GSRD042, **9m @ 4.38% Cu** from 46m in GSRD029, **9.75m @ 2.25% Cu** from 120m in PD89GR05 and **6.5m @ 2.85% Cu** in PD89GR06²
- Recent drilling has confirmed that downhole electromagnetic (DHEM) surveys can identify new Cu-rich zones up to 400m away
- **Deep wide spaced diamond drillholes** intersected thick VMS sulphide mineralisation between 200 – 600m below surface with **ASSAYS PENDING**
- **DHEM surveys** identified EM conductors underneath existing drilling³
- **VMS mineralisation is open in all directions with large areas untested**

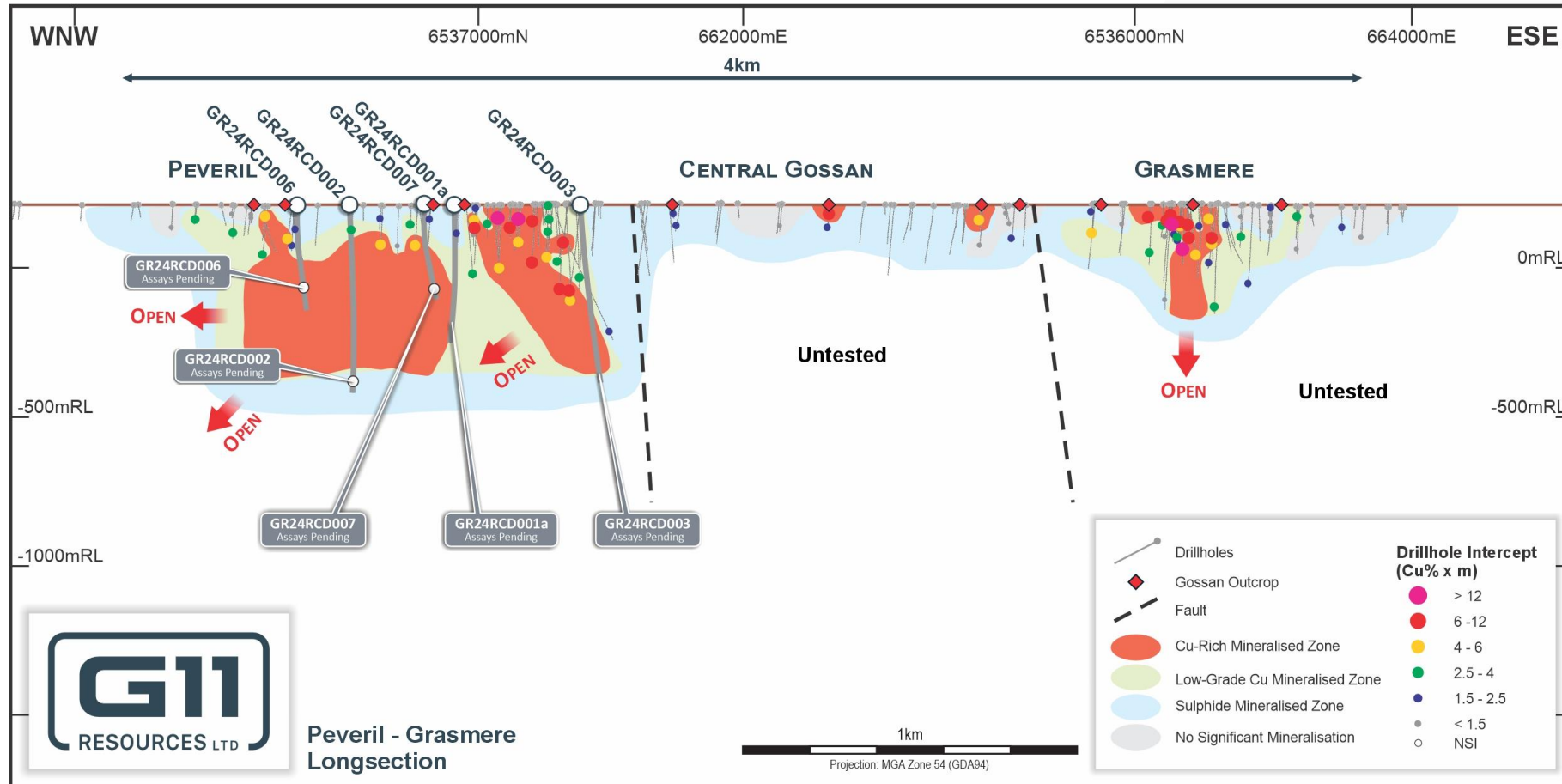


WILANDRA – Significant Upside Now Identified

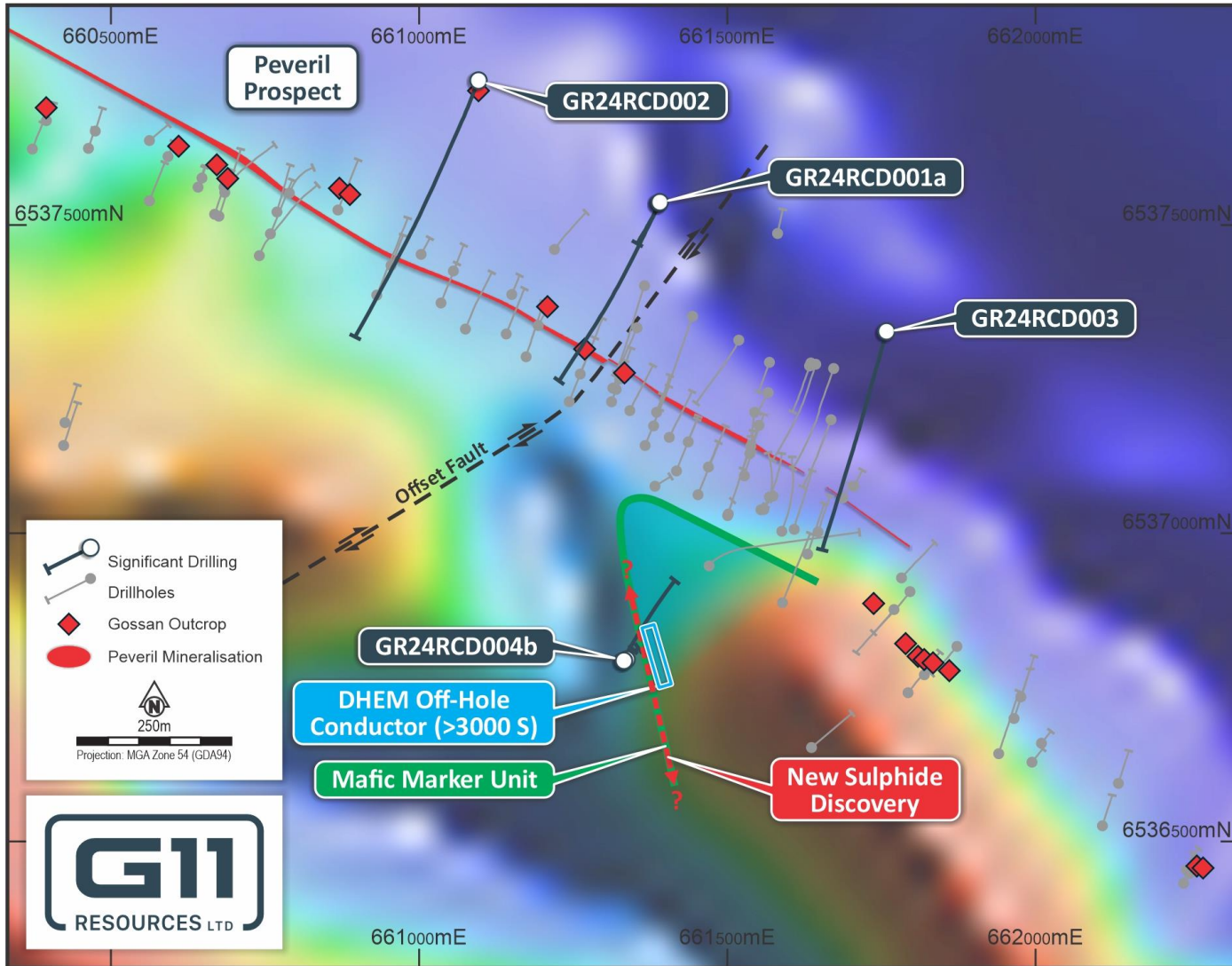
Drilling of DHEM Plates intersected significant sulphide mineralisation

- Two drillholes (GR24RCD006 & GR24RCD007) targeted the DHEM conductors
- Significant sulphide mineralisation intersected where predicted by the EM⁴
- G11s first ever Diamond Drilling intercepts confirm a VMS system
- Assays due in the next two weeks

Large areas remain un-tested and mineralisation is open



WILANDRA – Potential New System Identified

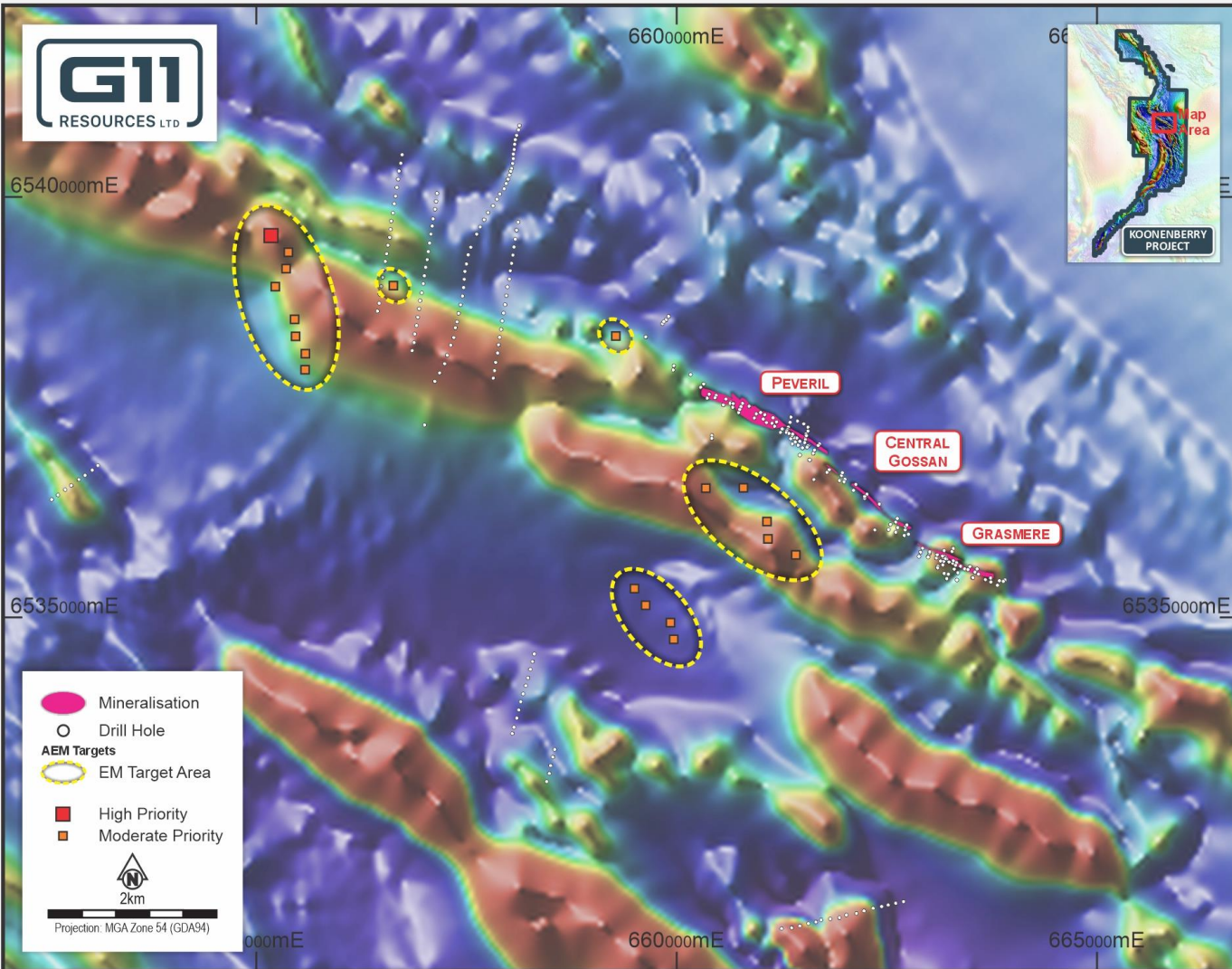


Surface EM (MLEM) anomaly tested

- Subtle MLEM conductor interpreted off the main Peveril – Grasmere Trend
- Drill testing returned massive sulphide mineralisation with assays pending
- **Potential new system** developing separate to main zone

WILANDRA CORRIDOR – VMS Potential Being Unlocked

VMS Deposits Form in Clusters – strike extensions remain untested



Drilling has confirmed both VMS and structurally remobilised massive sulphide mineralisation at Peveril over more than 1km of strike – **extensions being tested by DHEM and drilling**



Confirmation of VMS system at Peveril and intersection of a new massive sulphide lens increases likelihood of discovering additional Cu-rich sulphide mineralisation – **EM proving effective at identifying sulphide horizons**



Airborne EM anomalies identified along strike of Peveril-Grasmere and at Central Gossan – MLEM survey underway to better constrain these prior to drill testing



Aggressive, yet systematic exploration program being implemented to unlock the potential of Wilandra – significant news flow planned

— 2024/25 – Ramping up Exploration work

GII are defining a significant mineralised system at Wilandra through systematic, aggressive exploration

Exploration Plan – 2024/2025

- **Assays and DHEM survey results expected late October, early November 2024**
- **Drilling continuing** in order to confirm and extend high-grade Cu mineralisation at Wilandra Central (November 2024)
- MLEM commencing along strike to the NW of Peveril to better constrain Airborne EM anomalies in prospective stratigraphy and dilatant structural positions (November 2024)
- 2025 drilling focussed on defining a significant continuous mineralised system over 4km through extension drilling at Peveril (currently ~1km long) and testing EM conductors at depth in Central Gossan and Grasmere, as well as exploration drilling of MLEM conductors identified immediately to the NW of Wilandra Central

KOONENBERRY BELT – HIGHLY PROSPECTIVE / UNDER EXPLORED

FOUR DISTINCT PROSPECTIVE CORRIDORS OVER 190km STRIKE

WILANDRA CORRIDOR – DRILLING NOW

- Existing drill defined Cu-Zn mineralisation including 6m @ 3.46% Cu and 5m @ 2.48% Cu¹
- Follow-up extension drilling underway
- EM geophysical surveys proven effective at identifying sulphide zones
- Prospective stratigraphic unit with numerous mineralised structures extends over 75km

CYMBRIC VALE CORRIDOR – DRILL READY

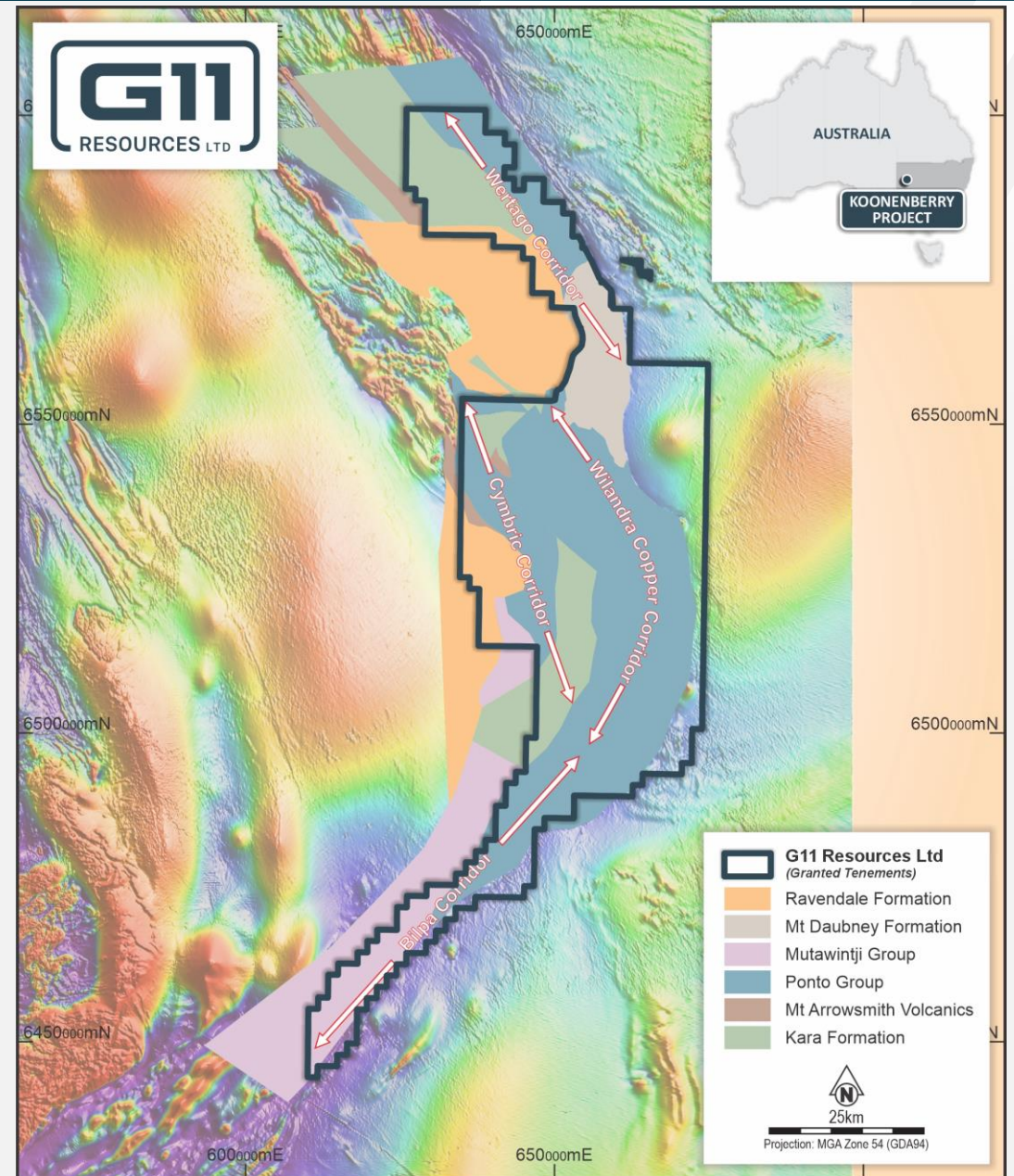
- Potential for multiple mineralisation styles within the 50km strike extent
- Multiple large structures evident in geophysics and mapping with anomalous Cu, Au, Ni & Co in soils and rock chips
- Large, untested magnetic and gravity anomalies

BILPA CORRIDOR


- Numerous mineralised outcrops with historic workings over 65km of strike
- Effectively zero modern-day exploration undertaken

WERTAGO CORRIDOR

- Right tectonic setting for forming epithermal Au-Ag-Cu-Pb-Zn mineralisation
- Multiple mineralised structures defined over 30km of strike length





 Level 21, 459 Collins Street Melbourne

 www.G11Resources.com.au

¹ See G11 Resources ASX Announcement “High Grade Copper Intercepts at Wilandra Central”, 4 June 2024 for further information, Competent Person’s Consent, material assumptions, and technical parameters concerning historical work at the Koonenberry project

² See Odin Metals Ltd ASX Announcements “District Scale Copper Project Acquisition”, 18 February 2021 and “Acquisition of Grasmere Copper Deposit”, 06 April 2021, for further information, Competent Person’s Consent, material assumptions, and technical parameters concerning historical work at the Koonenberry project

³ See G11 Resources ASX Announcement “Potential Scale of Wilandra Copper Project Increased Significantly”, 10 September 2024 for further information, Competent Person’s Consent, material assumptions, and technical parameters concerning historical work at the Koonenberry project

⁴ See G11 Resources ASX Announcement “Wilandra Exploration Update – Drilling Completed”, 04 October 2024 for further information, Competent Person’s Consent, material assumptions, and technical parameters concerning historical work at the Koonenberry project

FOLLOW US

