

23 January 2023

## Welchau Gas Prospect Farmin Agreement Assigned to TSXV Listed MCF Energy Ltd. and Further Farm-in Interest Option Extended

*“Kepis & Pobe Financial Group Inc. have assigned their interest in the agreement to fund 50% of the cost of ADX’ Welchau-1 exploration well to earn a 20% interest and the parties have agreed to extend the option to earn a further 20% interest to 28 February 2023.”*

### Key points:

- In accordance with the previously announced Farmin Agreement, Kepis & Pobe Financial Group Inc. (“KPFG”) have assigned their interest in the agreement to Canadian TSX Venture Exchange (“TSXV”) listed MCF Energy Ltd. (TSXV – MCF.V) (“MCF Energy”).
- MCF Energy recently commenced trading on the Canadian TSXV under the stock symbol “MCF”. MCF Energy has appointed an experienced board of directors, management team and advisors, and has completed a C\$ 8.5 million private placement financing.
- MCF Energy aims to become a leading new explorer of large-scale natural gas prospects in Western Europe. In addition to the farmin of ADX’ Welchau prospect in Austria, MCF Energy is in the process of finalising further drilling prospects in Germany.
- In accordance with the Farmin Agreement, MCF Energy had the option to fund a further 50% of the Welchau-1 well cost to earn a further 20% economic interest in the Welchau Farmin Area (Option). The Option election has been extended from 21 January 2023 to 28 February 2023 on the same terms as previously agreed by the parties (refer ASX release dated 29 November 2022). Prior to the Option election, MCF Energy must provide proof of financial capability to perform its additional obligations under the Option.
- **The Welchau prospect has the potential to contain an 807 Billion Cubic Feet (BCFE) equivalent (approx. 134 MMBOE) best technical prospective resource** <sup>note 1</sup> (refer ASX release dated 20 June 2022). Welchau is located up-dip from a gas discovery (Molln-1 well) drilled in 1989 which intersected at least a 400 m gas column, with 900 m interpreted from pressure data and tested condensate rich, pipeline quality gas (40 barrels per mmcf and maximum flowrate of 3.5 mmcfpd). (refer to Appendix 1).

**ADX Executive Chairman, Mr Ian Tchacos, said,** *“The Board of ADX is pleased to have MCF Energy Ltd. as its highly experienced and European gas focussed partner to participate in the drilling of the large Welchau gas prospect in Upper Austria”.*

*Note 1: The prospective resource estimates in this release are classified and reported in accordance with the PRMS – SPE Guidelines for the exploration licenses ADX-AT-I and ADX-AT-II, in the Molasse Basin, Austria. Refer to the end of this release for an explanation of prospective resource classifications used and the basis on which the prospective resources were estimated. Prospective Resources are those estimated quantities of petroleum that may potentially be recovered by the application of a future development project(s) related to undiscovered accumulations. These estimates have both an associated risk of discovery and a risk of development. Further explorations appraisal and evaluation is required to determine the existence of a significant quantity of potentially moveable hydrocarbons.*

ADX Energy Ltd (**ASX Code: ADX**) is pleased to advise that Kepis & Pobe Financial Group Inc. (“KPFG”) have assigned their interest in the Welchau farmin agreement to Canadian TSX Venture Exchange (“TSXV”) listed MCF Energy Ltd. (TSXV – MCF.V) (“MCF Energy”).

Under the terms of the Energy Investment Agreement, MCF Energy will fund 50% of the Welchau-1 well drilling expenditure to earn a 20% economic interest in the Welchau Farmin Area. By the payment of the EUR 100,000 Option Fee (received in December 2022), MCF Energy was granted the option to fund a further 50% of the Welchau-1 well drilling cost to earn a further 20% economic interest in the Welchau Farmin Area on or before 21 January 2023 (refer ASX Release dated 29 November 2022).

The Option election date has been extended from 21 January 2023 to 28 February 2023 on the same terms as previously agreed by the parties. Prior to the Option election MCF Energy must provide proof of financial capability to perform its additional obligations under the Option. The Welchau-1 well drilling expenditures are budgeted at up to EUR 3,810,000 (A\$ 5,910,000).

If MCF Energy exercises the Option to fund the entire Welchau-1 well cost, at the completion of its farmin obligations, MCF Energy will hold 40% economic interest and ADX will retain a 60% economic interest in the Welchau Farmin Area (refer to Appendix 1, Figure 1 at the end of this release).

### **Welchau-1 Well Updates**

ADX will provide regular updates in relation to well planning and permitting for the Welchau-1 well. ADX recently executed a land access and rental agreement for the Welchau-1 surface drilling location with the Austrian Forestry Ministry (refer ASX Release dated 14 December 2022).

### **For further details please contact:**

Paul Fink	Ian Tchacos
Chief Executive Officer	Executive Chairman
+61 (08) 9381 4266	+61 (08) 9381 4266
<a href="mailto:paul.fink@adx-energy.com">paul.fink@adx-energy.com</a>	<a href="mailto:ian.tchacos@adxenergy.com.au">ian.tchacos@adxenergy.com.au</a>

### **Authorised for lodgement by Ian Tchacos, Executive Chairman**

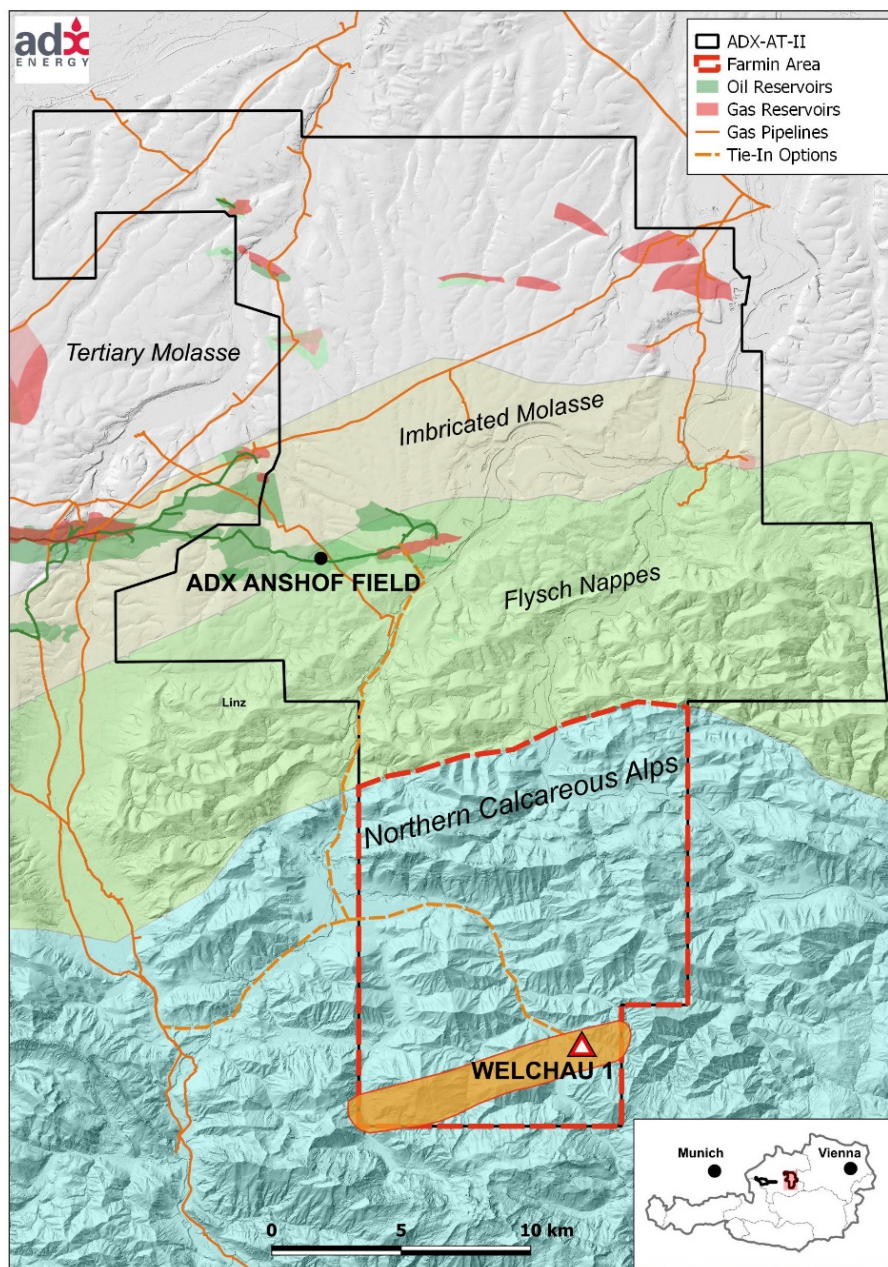
### **Persons compiling information about Hydrocarbons:**

Pursuant to the requirements of the ASX Listing Rule 5.31, 5.41 and 5.42 the technical and reserves information relating to Austria contained in this release has been reviewed by Paul Fink as part of the due diligence process on behalf of ADX. Mr. Fink is Technical Director of ADX Energy Ltd is a qualified geophysicist with 25 years of technical, commercial and management experience in exploration for, appraisal and development of oil and gas resources. Mr. Fink has reviewed the results, procedures and data contained in this release and considers the resource estimates to be fairly represented. Mr. Fink has consented to the inclusion of this information in the form and context in which it appears. Mr. Fink is a member of the EAGE (European Association of Geoscientists & Engineers) and FIDIC (Federation of Consulting Engineers).

**Appendix 1**

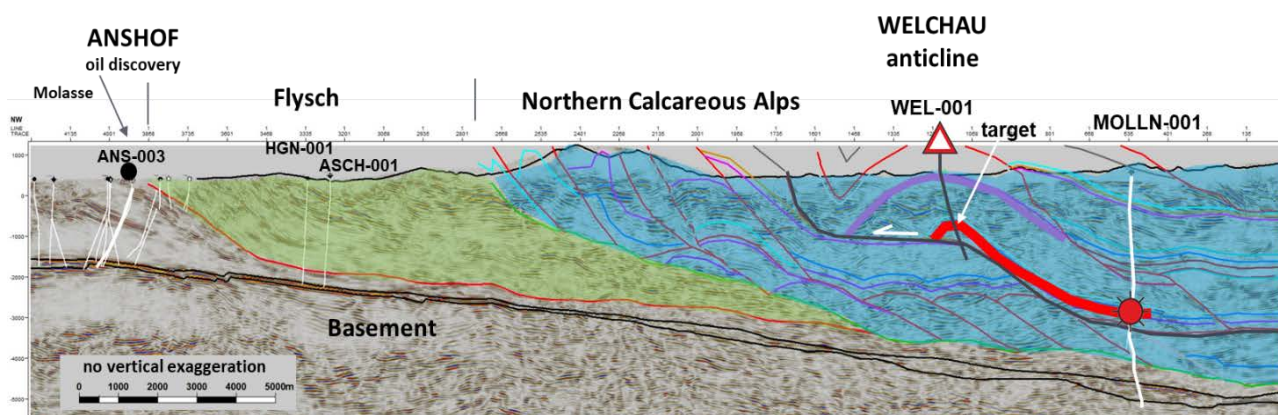
**Welchau Gas Prospect Summary**

The Welchau gas prospect has best technical resources estimated by ADX at 807 BCFE (134 MMBOE) <sup>Note 1</sup>. It is potentially connected to an accidental gas discovery at the Molln-1 well which was drilled and extensively tested in 1989. The Molln-1 tested pipeline quality gas at a rate of up to 3.5 mmcfpd down dip from the Welchau proposed drilling location.



**Figure 1: Map showing ADX-AT-II license area, the Welchau Farmin Area (Red Dashed Border), the Welchau-1 drilling location in the Northern Calcareous Alps as well as the recently discovered and now producing Anshof oil field to the north**

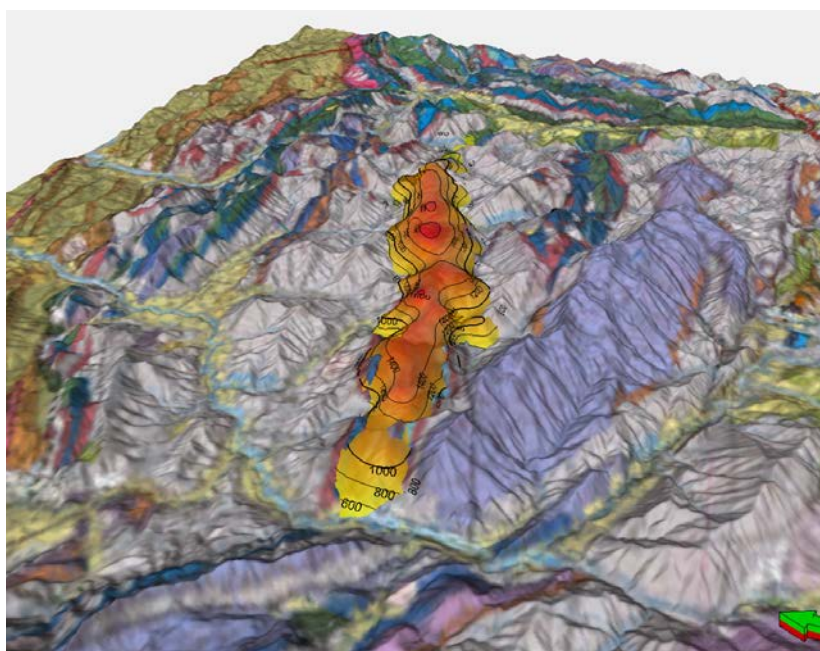




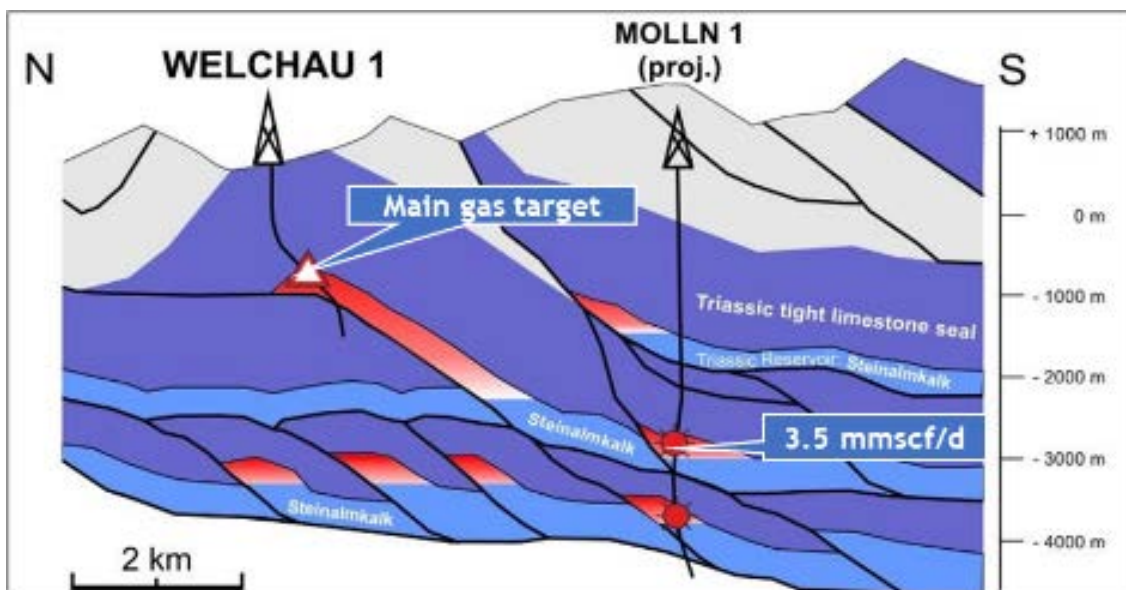
**Figure 2: Geoseismic Cross Section showing the Molln-1 well in the south, the giant Welchau thrust anticline and the ADX Anshof-3 production well in the north. Note that the Molln-1 well was targeting an Anshof play type at ca. 5700 metres of depth but accidentally made a significant gas discovery (red highlight) much shallower within the thrust belts of the Northern Calcareous Alps which will also be targeted at Welchau**

The gas prospect is located in the foothills of the Austrian Alps and is analogous to the large anticline structures discovered in Kurdistan and the Italian Apennines. Welchau is a relatively shallow prospect (approx. 1120 m TVD). There is excellent access to the planned drilling location via roads and a short tie-in distance to the national gas pipeline network (approx. 18 km).

The main target at Welchau is the Triassic Steinalm Formation, a fractured carbonate reservoir trapped in a trending ramp anticline with more than 20 km lateral extent and 100 km<sup>2</sup> maximum closure area. The structure is defined by extensive outcrop mapping and balanced 2D cross sections along a profile parallel to the shortening direction.



**Figure 3: Surface expression of the Welchau anticline with 23 km lateral extension and 100 km<sup>2</sup> area**



**Figure 4: Schematic cross section of the Welchau gas prospect and the Molln-1 gas discovery**



**Figure 5: Molln-1 well gas test in 1989**

**ADX Energy Ltd** | ABN 50 009 058 646 -Registered and Principal Office Australia  
29 Bay Road, Claremont WA 6010, Australia  
Telephone: +61 8 9381 4266 | [admin@adxenergy.com.au](mailto:admin@adxenergy.com.au) | [adxenergy.com.au](http://adxenergy.com.au)

ADX prospective resource estimates for the Welchau prospect are summarised below.

<b>Welchau Gas Prospect</b>				
<b>Prospective Recoverable Resources Estimates</b>				
		<b>Minimum</b>	<b>Best Technical</b>	<b>Maximum</b>
Gas	BCF	171	651	1315
<i>Oil equivalent</i>	<i>BOE</i>	<i>29</i>	<i>108</i>	<i>219</i>
Condensate	BBLs	6.8	26	52.6
<b>Total Oil Equivalent</b>	<b>BOE</b>	<b>35</b>	<b>134</b>	<b>272</b>
<b>Total Gas Equivalent</b>	<b>BCFE</b>	<b>212</b>	<b>807</b>	<b>1631</b>
<i>Mcf per BBL conversion used</i>		6		

The original Resources Reporting Date for Welchau prospective resources was on 16 May 2022, the estimates were further revised on 20 June 2022.

The Molln-1 well located down dip of Welchau was drilled and tested in 1989. The results from this nearby well have significantly reduced risk in the following areas;

- Gas quality and gas charge has been demonstrated by gas flows during testing that also confirmed a high condensate yield (40 barrels per mmcf);
- Reservoir productivity of Triassic Steinalm Formation which was tested at 3.5 mmcfpd; and
- The quality of the top seal to hold a large gas column (900 metres interpreted from pressure and well test data, minimum 400 metres).

#### **Reporting Standards for Resource Estimation**

Reserves and resources are reported in accordance with the definitions of reserves, contingent resources and prospective resources and guidelines set out in the Petroleum Resources Management System (PRMS) prepared by the Oil and Gas Reserves Committee of the Society of Petroleum Engineers (SPE) and reviewed and jointly sponsored by the American Association of Petroleum Geologists (AAPG), World Petroleum Council (WPC), Society of Petroleum Evaluation Engineers (SPEE), Society of Exploration Geophysicists (SEG), Society of Petrophysicists and Well Log Analysts (SPWLA) and European Association of Geoscientists and Engineers (EAGE), revised June 2018.

#### **Prospective Resource Classifications**

**Low Estimate** scenario of Prospective Resources - denotes a conservative estimate of the quantity that will actually recovered from an accumulation by an oil and gas project. When probabilistic methods are used, there should be at least a 90% probability (P90) that the quantities actually recovered will equal or exceed the low estimate.

**Best Estimate** scenario of Prospective resources - denotes the best estimate of the quantity that will actually be recovered from an accumulation by an oil and gas project. It is the most realistic assessment of recoverable quantities if only a single result were reported. When probabilistic methods are used, there should be at least a 50% probability (P50) that the quantities actually recovered will equal or exceed the best estimate.

**High Estimate** scenario of Prospective Resources - denotes an optimistic scenario of the quantity that will actually be recovered from an accumulation by an oil and gas project. When probabilistic methods are used, there should be at least a 10% probability that the quantities actually recovered will be equal or exceed the high estimate.

ADX has only reported Best Estimate Prospective Resources Scenarios in this release.

**Nomenclature and conversions used in this release**

*BBL* means US barrel

*MMBLS* means millions of US barrels.

*MCF* means thousand cubic feet

*MMCF* means million cubic feet

*BCF* means billion cubic feet

*TCF* means trillion cubic feet

*BOE* means barrels of oil equivalent

*MMBOE* means millions of barrels of oil equivalent

*Oil to gas energy equivalent conversion:* 1 BBL = 6 MCF

**End of this Release**