



Growth + new discoveries

REDISCOVERING A HISTORIC GOLDFIELD

Sandstone Gold Project | Western Australia

Resource Rising Stars-Miningnews.net "Boom in a Room Investor Conference" 14-15 October 2021

Summary Information

This presentation has been prepared by Alto Metals Limited (the "Company"). This Presentation contains summary information about the Company and its activities which is current at the date of this Presentation. The information in this Presentation is of a general nature and does not purport to be complete nor does it contain all the information which a prospective investor may require in evaluating a possible investment in the Company or that would be required in a prospectus or product disclosure statement prepared in accordance with the requirements of the Corporations Act.

The historical information in this Presentation is, or is based upon, information that has been released to the Australian Securities Exchange (ASX). This Presentation should be read in conjunction with the Company's other periodic and continuous disclosure announcements lodged with the ASX, which are available at www.asx.com.au

Not an offer

This Presentation is not an offer or an invitation to acquire Shares or any other financial products and is not a prospectus, product disclosure statement or other offering document under Australian law (and will not be lodged with ASIC) or any other law. This Presentation is for information purposes only and is not an invitation or offer of securities for subscription, purchase or sale in any jurisdiction. It should not be considered as an inducement to make an invitation or offer with respect to the New Shares. No agreement to subscribe for securities in the Company will be entered into on the basis of this Presentation. This Presentation is provided on the basis that to the maximum extent permitted by law, neither the Company nor its officers, shareholders, related bodies corporate, partners, affiliates, employees, representatives and advisers make any representation or warranty (express or implied) as to the accuracy, reliability, relevance or completeness of the material contained in the document and nothing contained in the document is, or may be relied upon as a promise, representation or warranty, whether as to the past or the future. The Company hereby excludes all warranties that can be excluded by law. The information in this document does not take into account the objectives, financial situation or particular needs of any person. Nothing contained in this document constitutes investment, legal, tax or other advice.

Forward-looking statements

This document may contain certain forward-looking statements. Such statements are only predictions, based on certain assumptions and involve known and unknown risks, uncertainties and other factors, many of which are beyond the Company's control. Actual events or results may differ materially from the events or results expected or implied in any forward-looking statement. The inclusion of such statements should not be regarded as a representation, warranty or prediction with respect to the accuracy of the underlying assumptions or that any forward looking statements will be or are likely to be fulfilled. The Company undertakes no obligation to update any forward-looking statement to reflect events or circumstances after the date of this document (subject to legal disclosure requirements).

Mineral Resources

The references in this Presentation to Mineral Resource estimates for the Sandstone Gold Project were reported in accordance with Listing Rule 5.8 in the following announcements:

- a) Lord Nelson: announcement titled "*Alto increases Lord Nelson Resource by 60% to 109,000 ounces at 1.9 g/t Gold*" dated 27 May 2020;
- b) Lord Henry: announcement titled "*Maiden Lord Henry JORC 2012 Mineral Resource of 69,000oz.*" dated 16 May 2017;
- c) Indomitable & Vanguard Camp: announcement titled "*Maiden Gold Resource at Indomitable & Vanguard Camps, Sandstone WA*" dated 25 September 2018; and
- d) Havilah & Ladybird: announcement titled "*Alto increases Total Mineral Resource Estimate to 290,000oz, Sandstone Gold Project*" dated 11 June 2019.

The Company confirms that it is not aware of any new information or data that materially affects the information included in the previous market announcement noted above and that all material assumptions and technical parameters underpinning the Mineral Resource estimates in the previous market announcements continue to apply and have not materially changed.

Exploration Results

The references in this Presentation to Exploration Results for the Sandstone Gold Project were reported in accordance with Listing Rule 5.7 in the following announcements:

22 Jul-19, 16 Mar-20, 2 Apr-20, 22 Apr-20, 27 May-20, 29 Sep-20, 2 Oct-20, 5 Feb-21, 8 Mar-21, 13 Apr-21, 13 May-21, 2 Jun-21, 1 Jul-21, 2 Aug-21, 19 Aug-21, 25 Aug-21, 9 Sep-21 and 5 Oct-21.

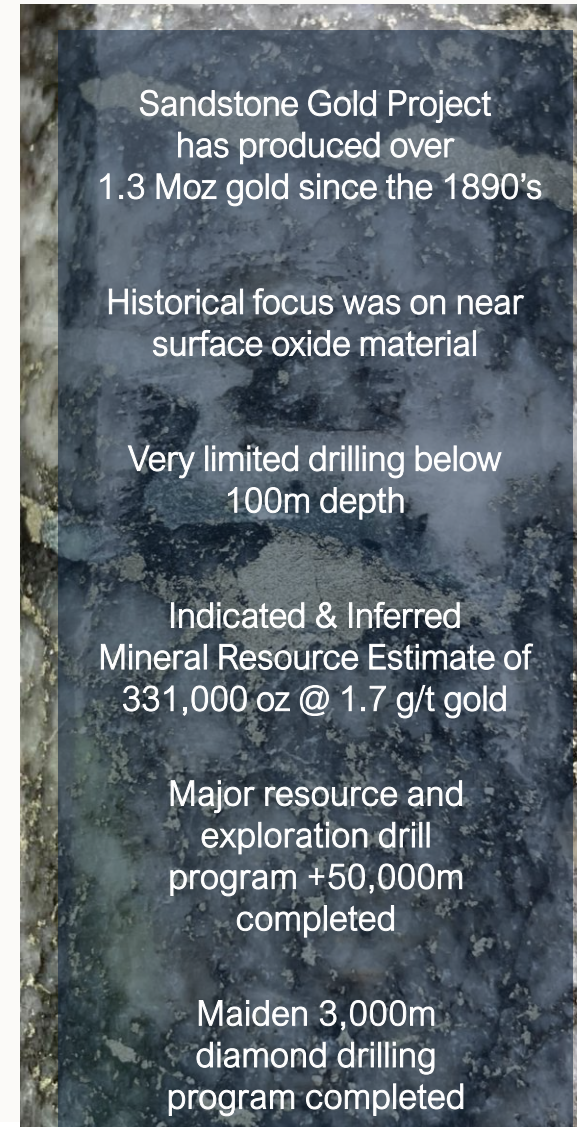
The Company confirms that it is not aware of any new information or data that materially affects the information included in the previous market announcement noted above.

Sandstone Gold Project

Rediscovering a historic goldfield

- **Strategic land position of +900km²**, covering the majority of the underexplored Sandstone Greenstone Belt in the East Murchison in WA
- Surrounded by **multi-million ounce gold deposits and producing mines**
- Current Mineral Resource Estimate **6.2Mt @ 1.7 g/t gold for 331,000 oz**
- **Resources are OPEN** with numerous high-grade intersections and new discoveries outside the resource
- **Excellent gold recoveries, averaging 96%**
- **Limited drilling below 100m** – historical focus on oxide material
- Assays for 10 DD holes and >100 RC holes – **pending**
- Well funded to drive exploration with ~\$3.1m in cash¹
- **Ongoing** corporate interest

1. Approximate closing cash as at end of Sep-21.



Recent Exploration Highlights

Our major 2021 drilling program is continuing to deliver excellent results

1 Strong continuity of thick, high-grade gold from drilling at Lord Nelson, Orion and Lord Henry


- **45m @ 3.2 g/t gold** from 161m, incl. **5m @ 17.0 g/t gold** from 162m (SRC432) – Lord Nelson
- **48m @ 3.4 g/t gold** from 214m, incl. **19m @ 6.0 g/t gold** from 223m (SRC423) – Lord Nelson
- **36m @ 2.0 g/t gold** from 203m incl. **3.6m @ 10.5 g/t gold** from 232.8m (SDD001) – Lord Nelson
- **134m @ 1.9 g/t gold** from 24m, incl. **20m @ 5.9 g/t gold** from 80m (SRC257) - Orion
- **60m @ 1.9 g/t gold** from 44m, incl. **12m @ 6.3 g/t gold** from 92m (SRC254) - Orion
- **12m @ 5.1 g/t gold** from 108m (SRC259) – Lord Henry

2 New Juno Discovery & broader Central Zone within the Lords Corridor

- **13m @ 5.1 g/t gold** from 162m, incl **3m @ 17.0 g/t gold** from 168m (SRC443) – Juno
- **23m @ 1.7 g/t gold** from 141m, incl. **5m @ 5.4 g/t gold** from 154m (SRC444) – Juno
- **16m @ 1.6 g/t gold** from 116m incl. **4m @ 5.3g/t gold** from 124m (SRC240) – Central Zone, 200m south of Juno

3 Exceptional, Shallow High-Grade Visible Gold from Vanguard

- **12m @ 22.5 g/t gold** from 40m, incl. **4m @ 60.6 g/t gold** from 40m (SRC286)



“Alto has already drilled more metres in 2021, than it has in any of the last five years...”

Corporate Overview

Well funded with a tightly held register



| CAPITAL STRUCTURE | Current |
|-------------------------------------|---------|
| SHARE PRICE ¹ | \$0.094 |
| TOTAL SHARES ON ISSUE | 450 M |
| MARKET CAP (undiluted) | \$42 M |
| CASH ² | \$3.1 M |
| DEBT | NIL |
| ENTERPRISE VALUE | \$39 M |
| MGT PERFORMANCE RIGHTS ³ | 12 M |
| OPTIONS ON ISSUE ⁴ | 7.5 M |

SHARE PRICE PERFORMANCE



1. Share price based on closing price on 12 Oct 2021
2. Estimated closing cash at the end of Sep 2021 quarter.

BOARD & KEY MANAGEMENT

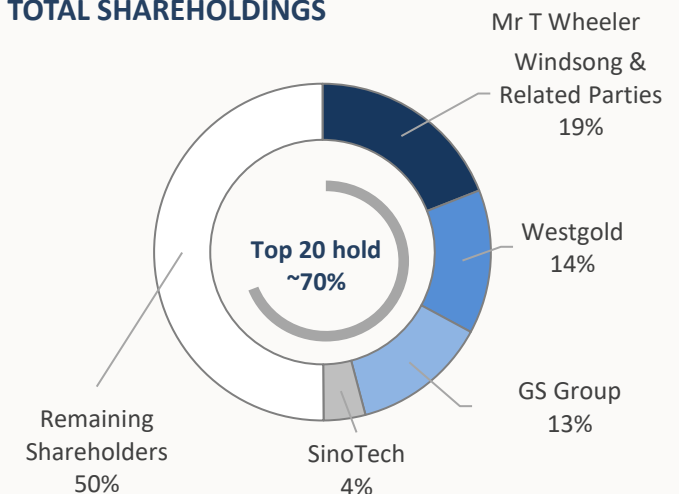
Richard Monti, Non-executive Chairman
Geologist, Corporate 30+ years exp.

Matthew Bowles, Managing Director
Corporate finance / resource exec. 25+ years exp.

Terry Wheeler, Non-executive Director
Minerals Chemist, Businessman 50+ years exp.

Dr Jingbin Wang, Non-executive Director
Geologist 25+ years exp.

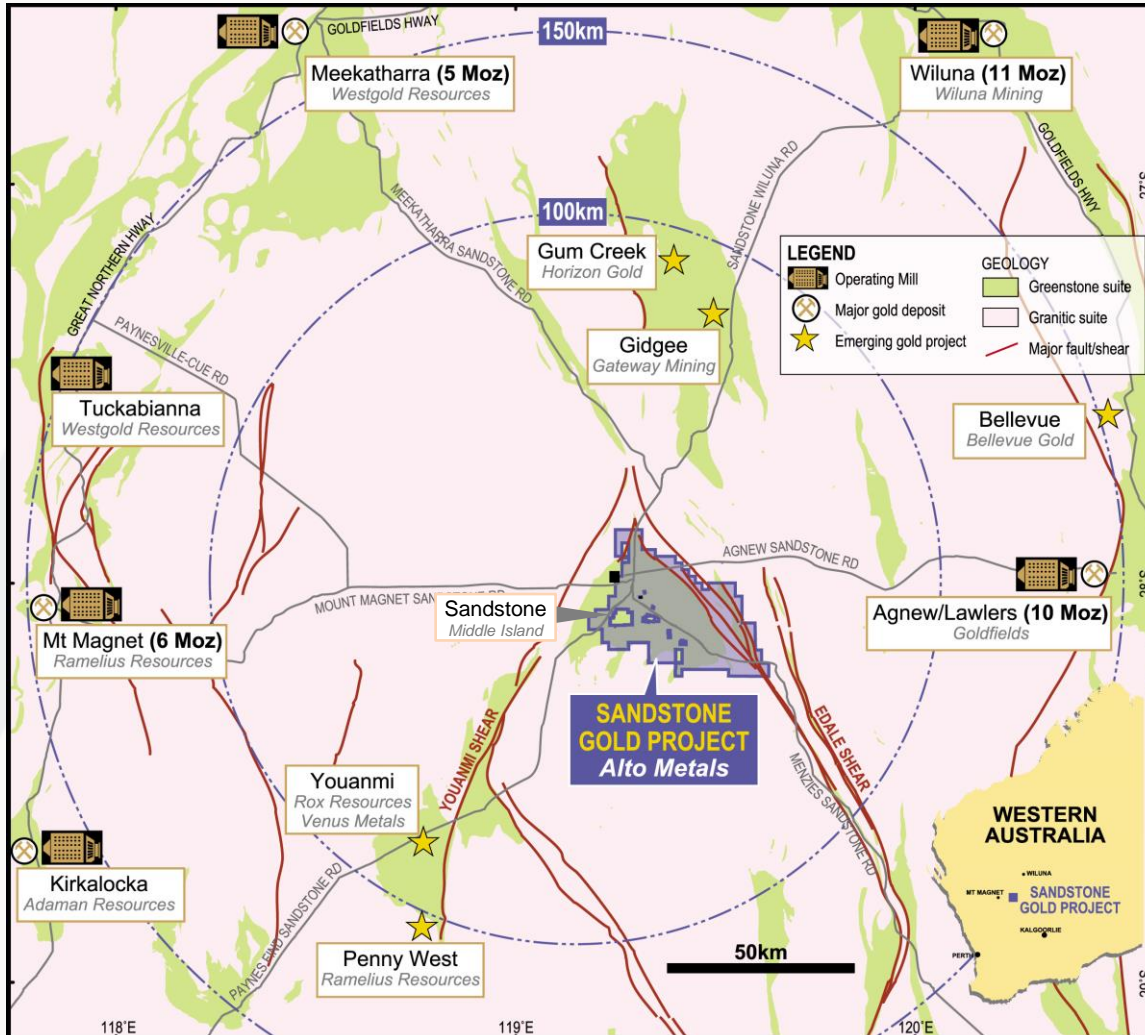
TOTAL SHAREHOLDINGS



3. 12m Management Performance Rights – 0.5Moz and 1Moz milestones
4. Unlisted management options, exercisable at \$0.07 each exp Nov-2023 (7.5M).

Located in a world class gold address

Surrounded by multi-million ounce gold deposits and operating mines



- **Western Australia – globally one of the best mining jurisdictions**
- **World class gold field**
 - Orogenic gold
 - +900 km² Greenstone Belt
 - 100% tenement ownership
- **Major Producing Mines**
 - Agnew (Goldfields)
 - Mt Magnet (Ramelius)
 - Big Bell (Westgold)
- **Excellent infrastructure**
 - Sealed highway to project
 - Grid power, water
 - Mobile coverage
 - Flights to Mt Magnet
- **Located between the Youanmi and Edale Shear Zones**

An Underexplored Greenstone Belt

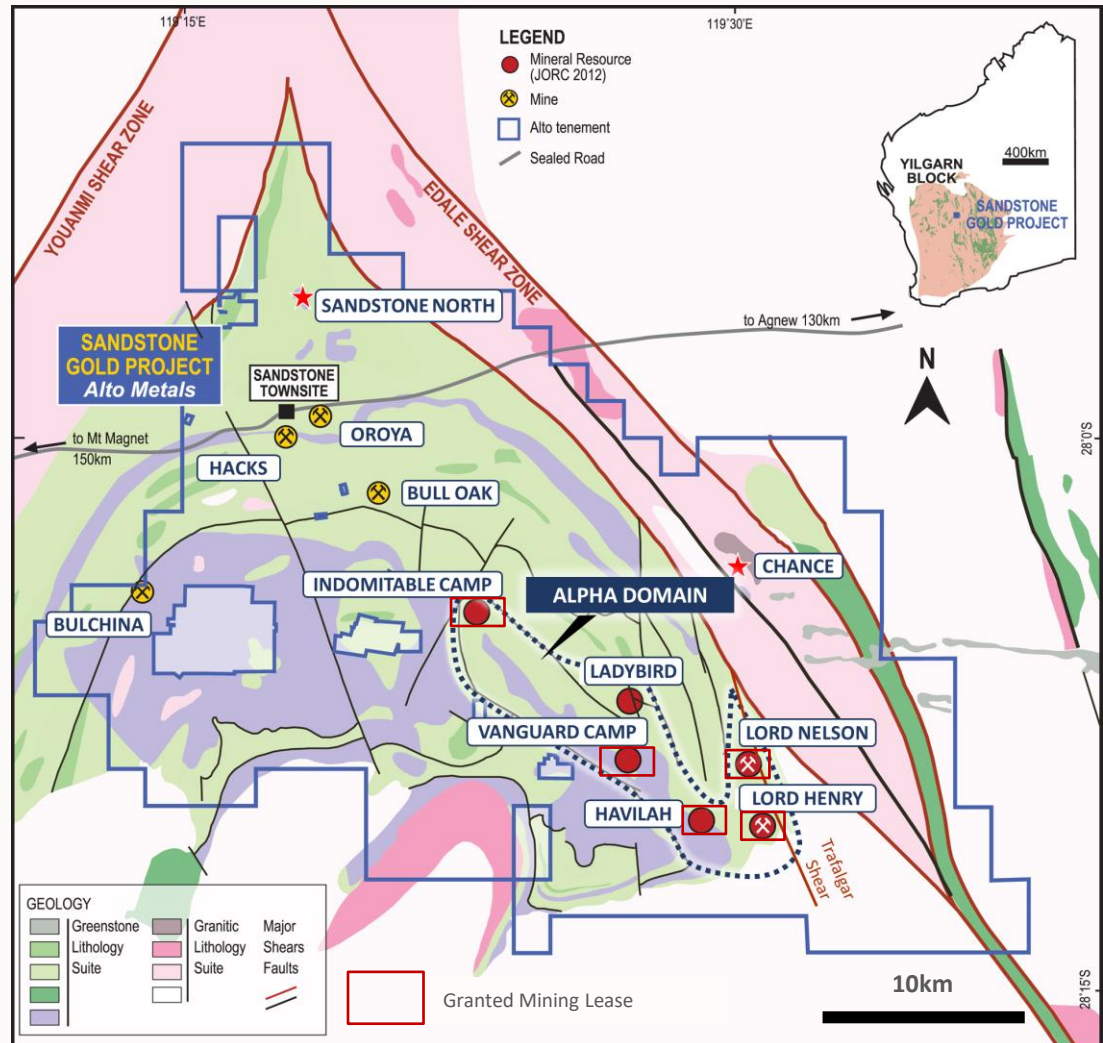
Dominant +900km² position over the majority of the Sandstone Greenstone Belt

Sandstone Greenstone Belt

- Located between the major Edale and Youanmi Shear Zones
- Greenstones and major structural systems are highly prospective
- Previous exploration focused on oxide material
- Multiple historic pits and drill targets

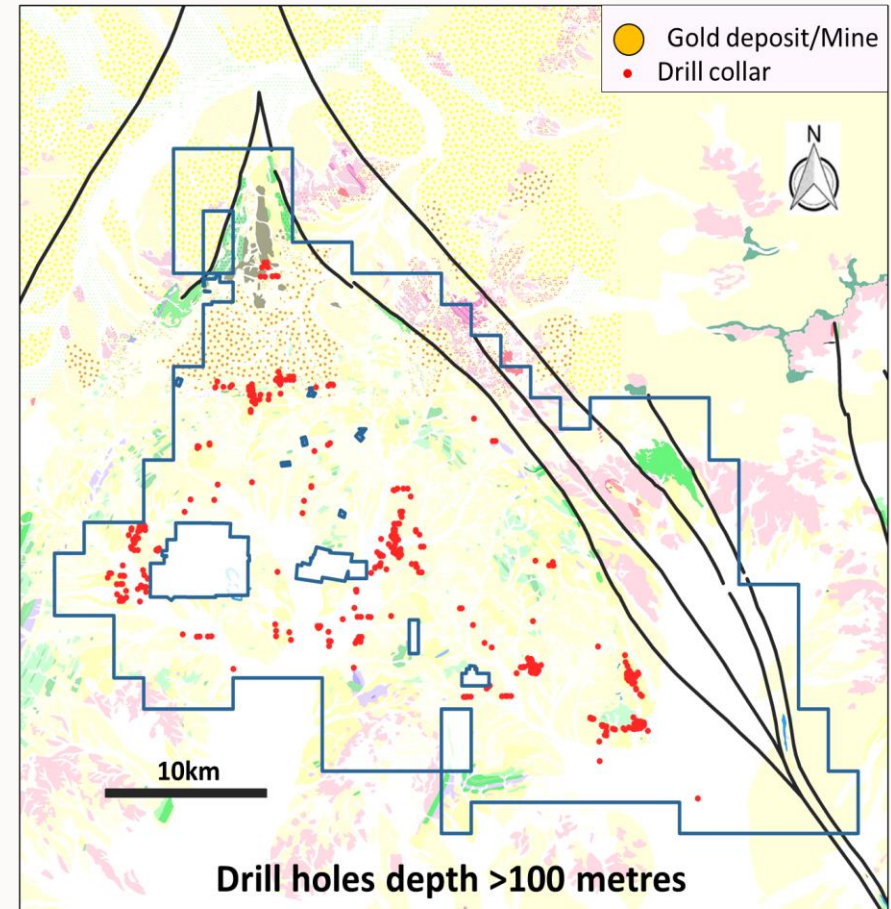
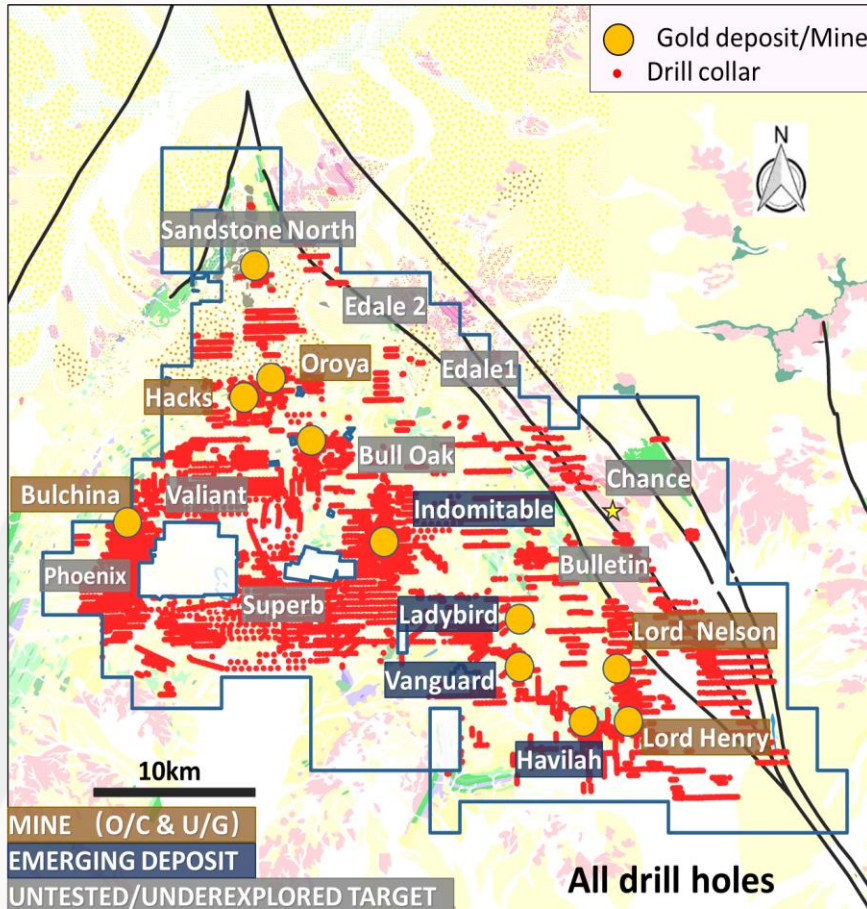
Alto's Focused Exploration Strategy

- Focus on strike and depth **extensions of known mineralisation** proximal to major shear zones
- Immediate focus on **the +3km Lords Corridor** within the 'Alpha Domain'



Historical drilling just scratched the surface...

Majority of historical drilling was less than 100m depth



- Historical drilling (pre 2010) average drill depth
- RAB/AC = 36 metres
- RC = 41 metres

- The average RC drill depth of Alto's current program is 187 metres

Lords Corridor

A 3km long granodiorite hosting two historic, shallow, high-grade oxide mines

Lord Nelson mineralisation below the pit

- 48m @ 3.4 g/t gold from 214m
- 45m @ 3.2 g/t gold from 161m
- 36m @ 2.0 g/t gold from 203m
- 16m @ 5.2 g/t gold from 240m
- 17m @ 3.5 g/t gold from 200m

Orion lode - 200m south of Lord Nelson

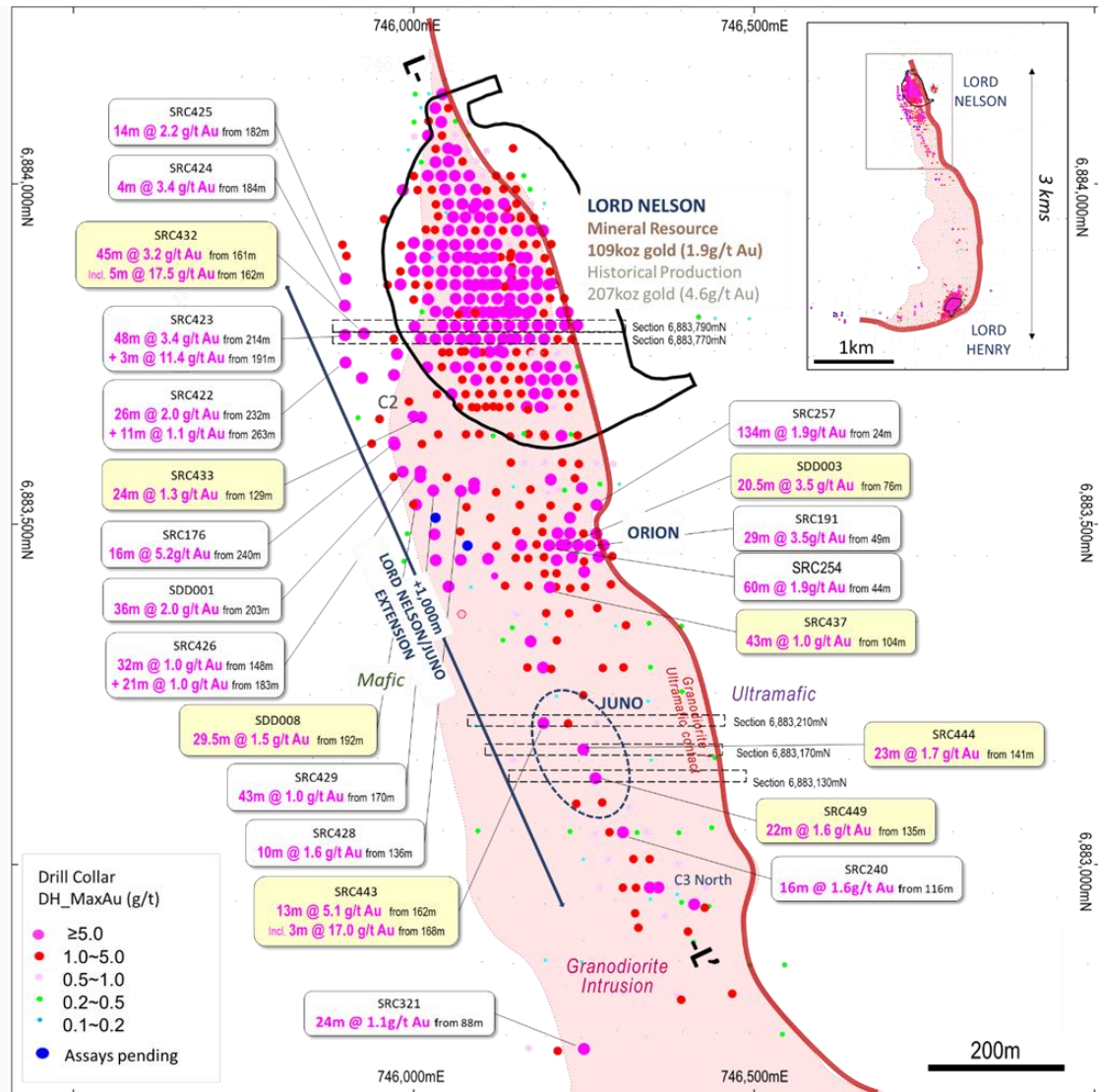
- 134m @ 1.9 g/t gold from 24m
- 60m @ 1.9 g/t gold from 44m
- 29m @ 3.5 g/t gold from 49m

Juno - 400m south of Lord Nelson

- 13m @ 5.1 g/t gold from 162m
- 23m @ 1.7 g/t gold from 141m
- 22m @ 1.6 g/t gold from 135m

Central Zone

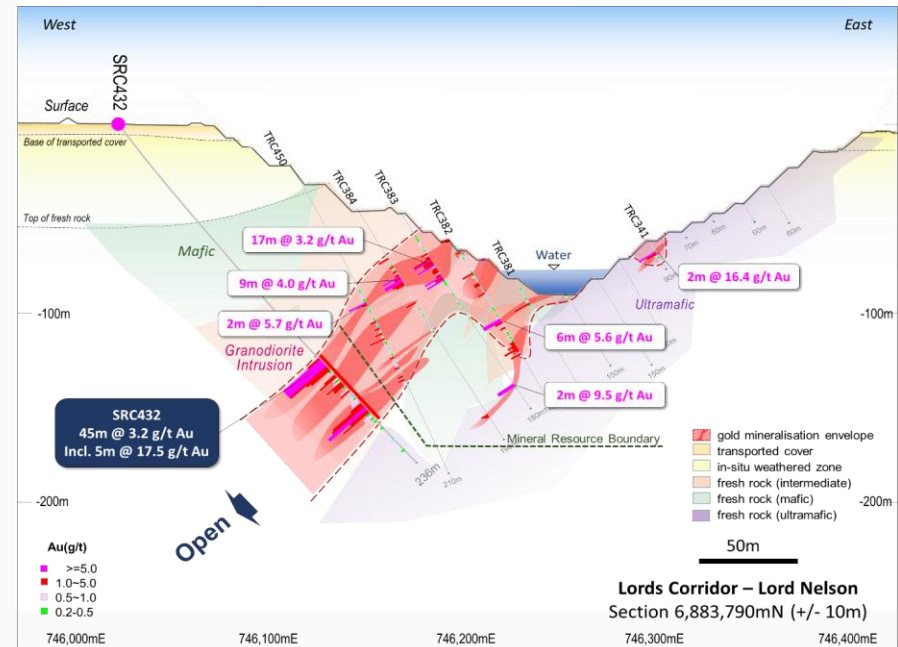
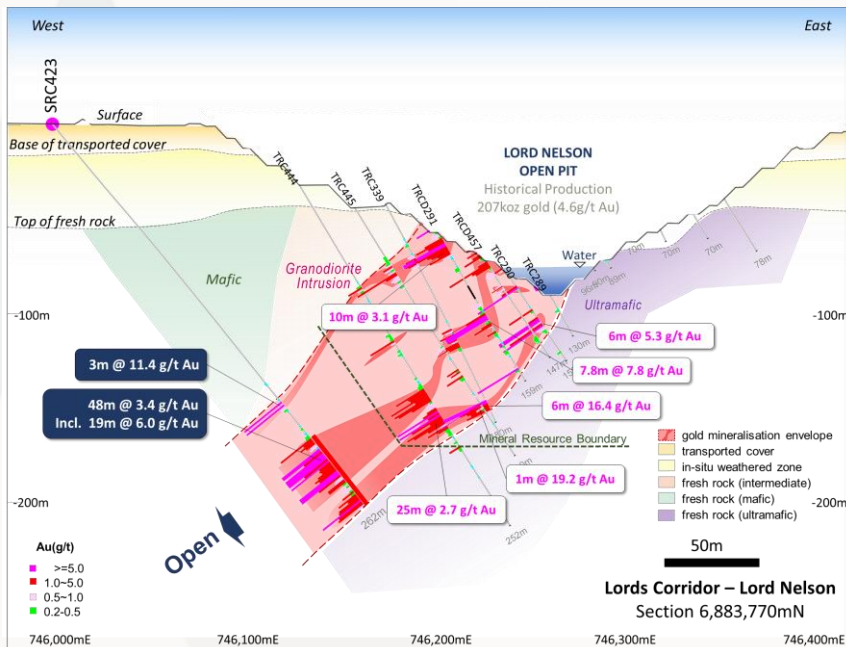
- 16m @ 1.6 g/t gold from 116m



Thick, high-grade gold at Lord Nelson

Mineralisation remains open along strike, down dip and down plunge

- The nature and style of mineralisation observed at the Lords granodiorite, is broad gold mineralisation within the 'damage zone' and a high-grade gold zone along the margin of the ultramafic contact.



Cross sections looking north showing:

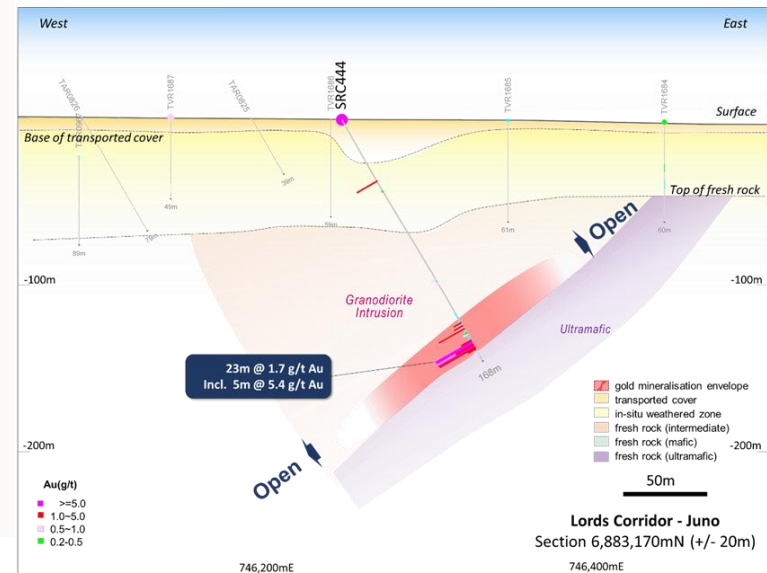
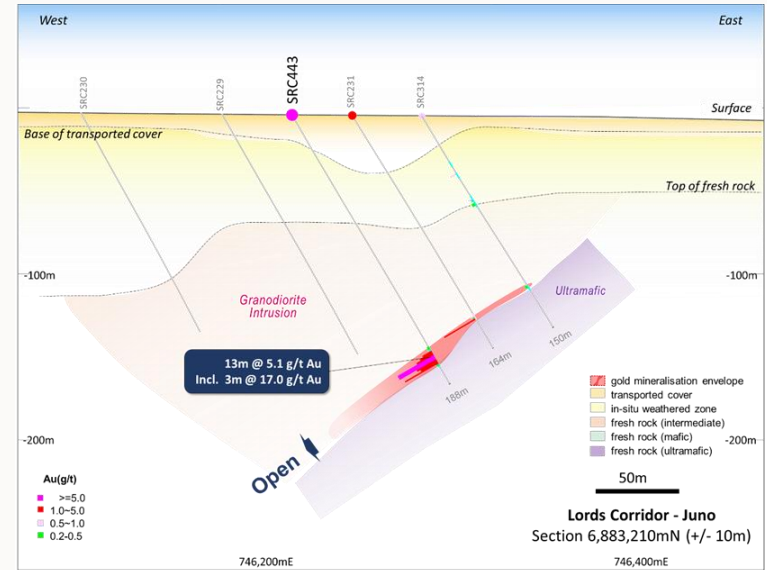
- Existing resource area below the Lord Nelson pit
- Wide zone of consistent mineralisation
- New high-grade gold mineralisation outside the current resource and remaining OPEN.

Juno – an exciting new discovery

An undiscovered extension of the mineralisation below Lord Nelson

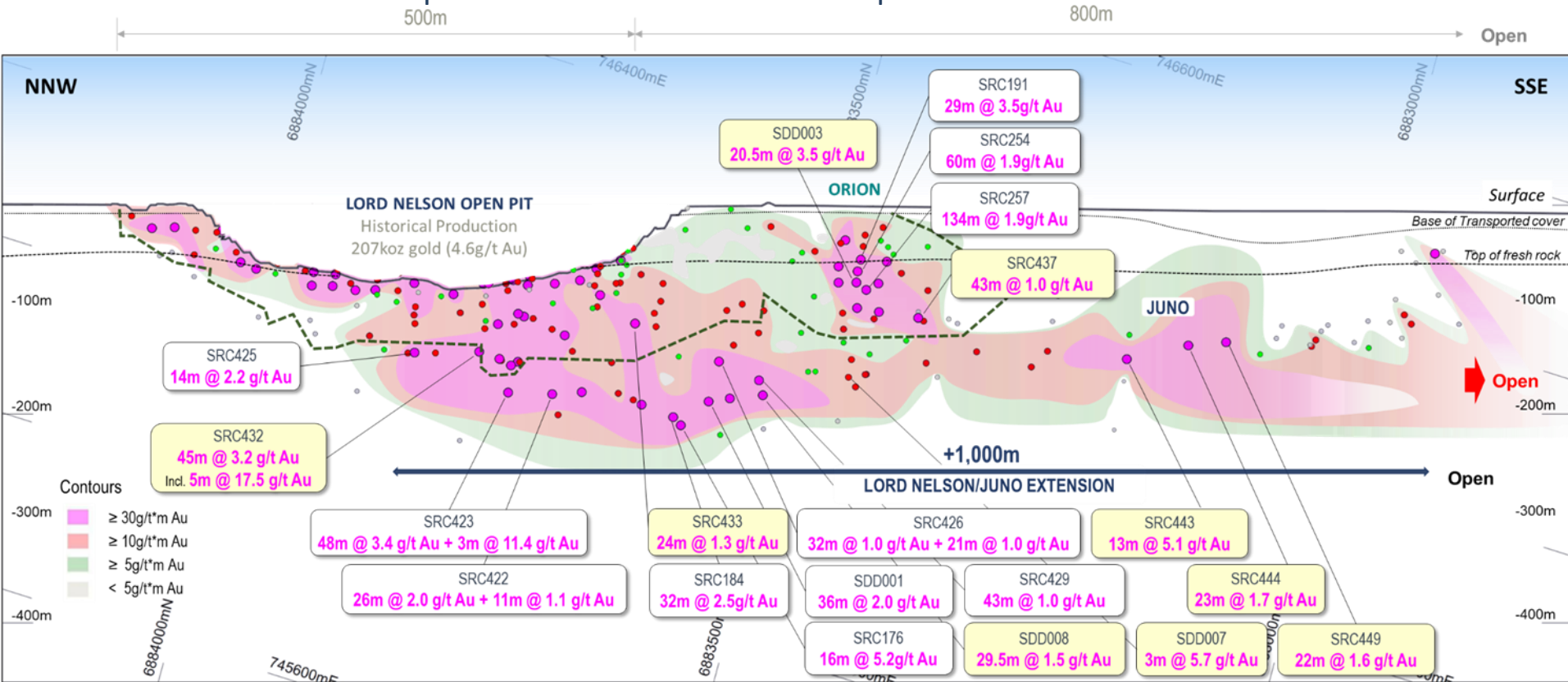
- A new high-grade gold discovery located 400m south of Lord Nelson.
- Drill intersections include:
 - 13m @ 5.1 g/t gold from 162m, incl. 3m @ 17.0 g/t gold
 - 23m @ 1.7 g/t gold from 141m, incl. 5m @ 5.4 g/t gold
 - 22m @ 1.6 g/t gold from 135m, incl. 5m @ 5.5 g/t gold

- Mineralisation is open along strike, up dip & down dip.
- Defined over 600m strike, on RC drilling on 40m single line spacing.
- Same style of mineralisation as Orion and Lord Nelson Lodes.
- Interpreted as an extension of the mineralisation beneath the Lord Nelson pit and outside the current resource.



Lord Nelson continues to grow...

Mineralisation remains open – Further discoveries are expected



Sandstone Gold Project
Oblique Long Section L-L' of Lord Nelson Trend
(+/- 60m)

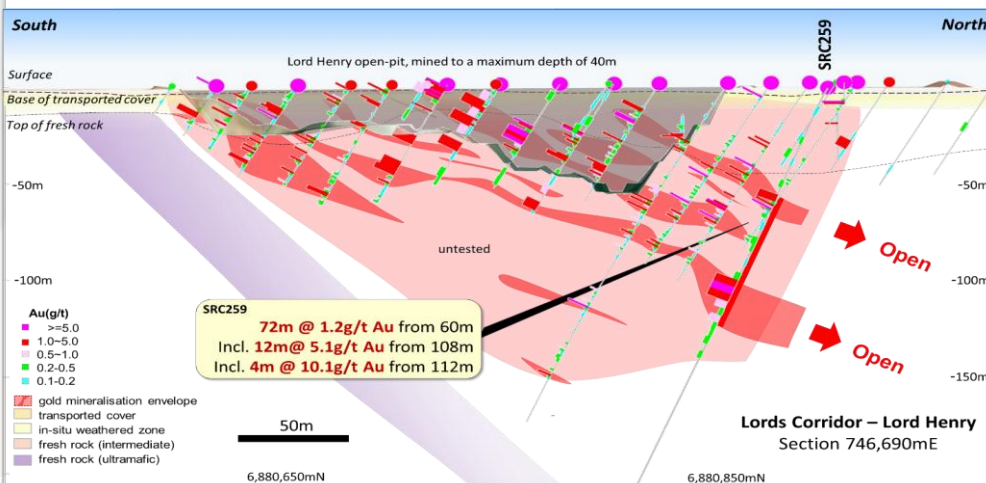
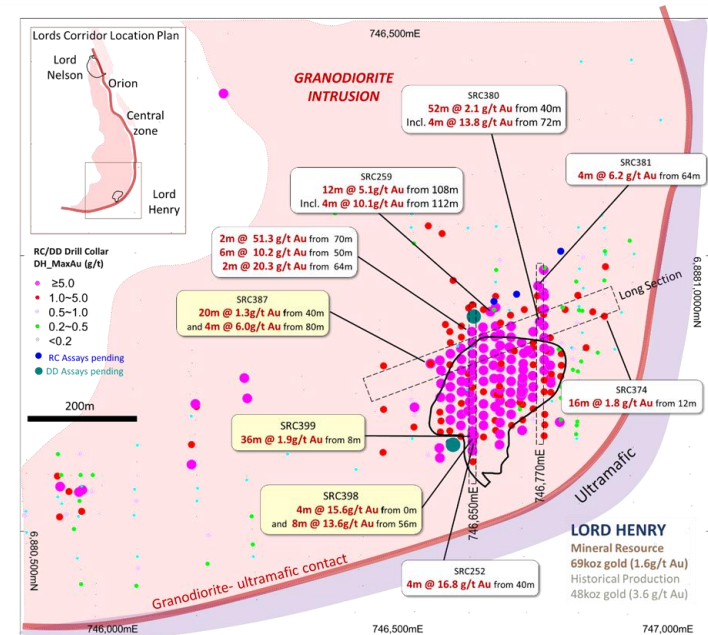
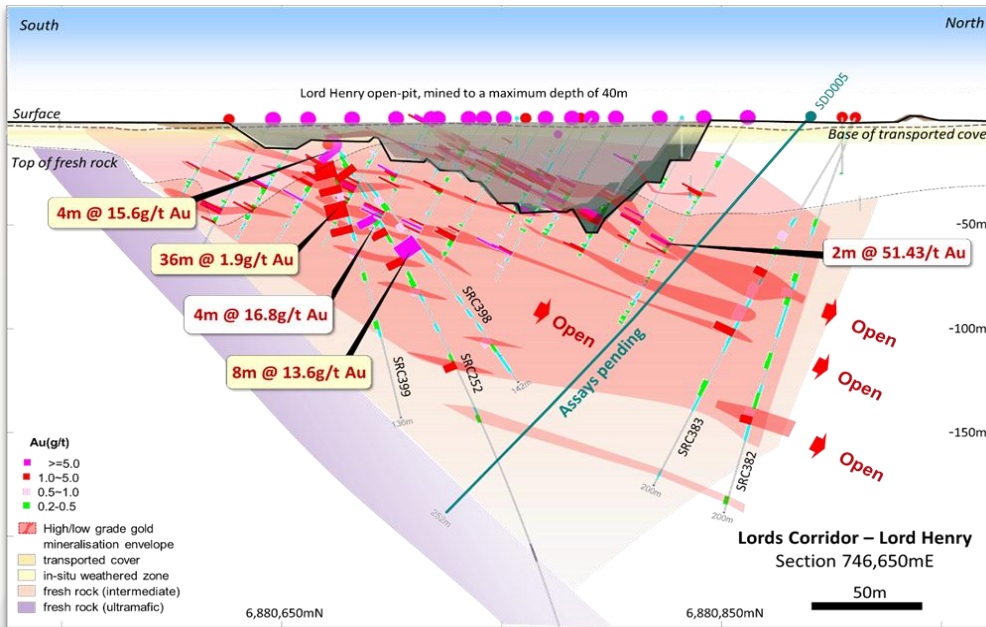
Drilling beneath Lord Nelson confirmed depth extensions

Juno - second new lode discovered following Orion and is considered an extension of the mineralisation below Lord Nelson, now defined over 1km

Central zone - mineralisation in a previously untested area 200m south of Juno

Lord Henry – shallow, high-grade gold

High-grade mineralisation outside the resource remaining open to the north



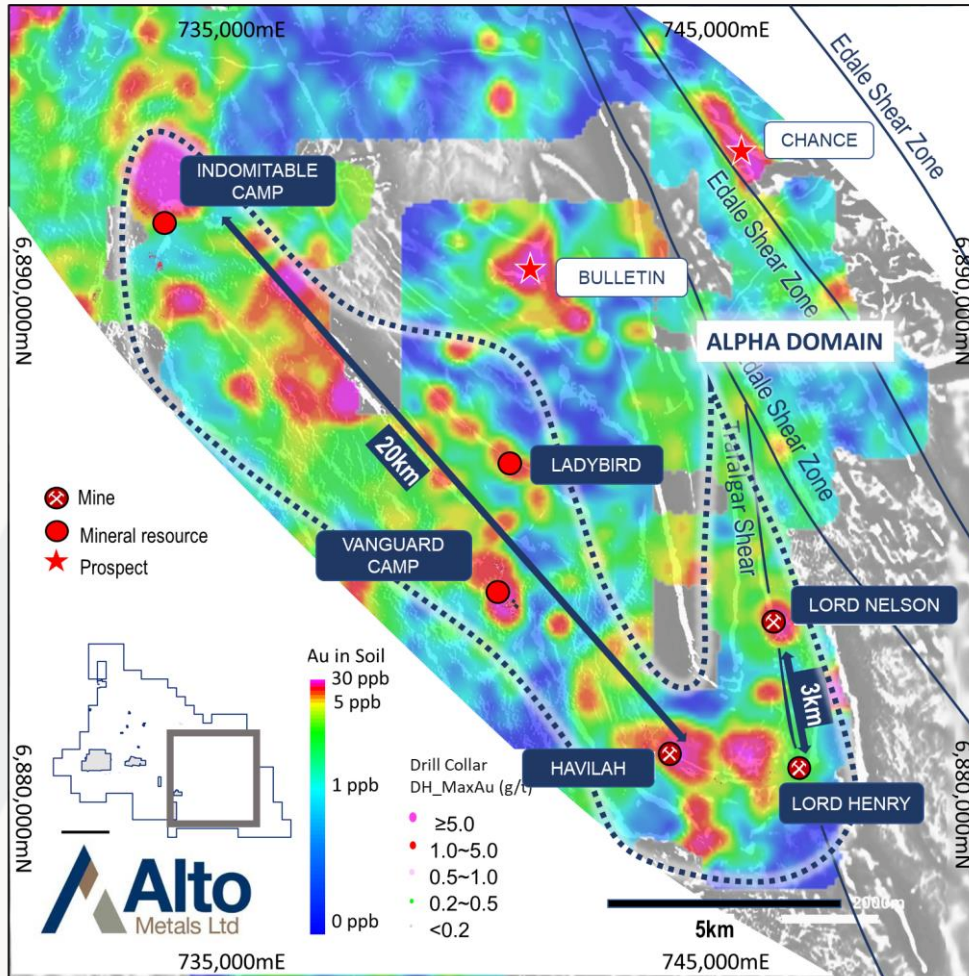
Recent drill intersections include:

- 52m @ 2.1 g/t gold from 40m, incl. 4m @ 13.8 g/t gold from 72m
- 72m @ 1.2 g/t gold from 60m
- 4m @ 15.6 g/t gold from surface, and
- 8m @ 13.6 g/t gold from 56m
- 36m @ 1.9 g/t gold from 8m

Mineralisation remains open to the north along strike and down plunge

Near term regional targets – Alpha Domain

Numerous deposits and advanced prospects in close proximity to the Lords



Regional prospect map (Alpha domain) showing gold-in-soil anomalies over 1VD Magnetics., highlighting regional deposits

Unlocking the potential of nearby regional scale structures

Over 20 kilometre long, NW corridor hosting multiple regional gold deposits.

All deposits are open.

Vanguard Camp. Drill intersections include:

- 4m @ 60.6 g/t gold from 40m
- 25m @ 3.8 g/t gold from 85m
- 22m @ 3.3g/t gold from 103m
- 18m @ 4.3 g/t gold from 122m

Indomitable Camp. Drill intersections include:

- 43m @ 2.2 g/t gold from 60m
- 17m @ 4.2 g/t gold from 64m
- 6m @ 18.2 g/t gold from 77m
- 15m @ 5.2 g/t gold from 125m

Global Indicated & Inferred Mineral Resource Estimate
331,000 oz @ 1.7 g/t gold is all hosted within the Alpha Domain

Rediscovering Sandstone

A major drilling program to start unlocking the value through growth and new discoveries

Activities

Current drill program focused on both exploration and resource growth

YTD Alto has completed over 50,000m of RC drilling and over 3,000m of diamond drilling

Prospect review and ranking of multiple regional targets for Q4 2021/ Q1 2022 RC drilling

Mineral resource work



3 Rigs (2 x RC and 1 x Diamond) drilling at Lord Nelson

Current

JORC Indicated & Inferred
Mineral Resource Estimate
331,000 oz @ 1.7 g/t gold

Q4 2021

Assays pending for Lord Henry,
Vanguard & Indomitable
Mineral Resource work
Regional targets review

Q4 2021 / Q1 2022

Recommence drilling
Lords, Vanguard, Indomitable, Regional
Mineral resource update

Ongoing news flow for 2021 and Q1 2022

Sandstone Gold Project



Strong cash balance

\$3.1_m

Well funded to advance exploration program and a tight share register

Assays Pending

**10 DD holes
>100 RC holes**

Aggressive exploration program underway to grow resources and make new discoveries

Growing gold resource

331_{koz}

Multiple +10g/t gold outside resource
Excellent gold recoveries up to 96%
Significant resource growth potential, excellent gold recoveries

Dominant landholding in Western Australia

>900_{km²}

Covering the majority of the historic Sandstone greenstone belt, which has already produced >1Moz gold

Underexplored, limited drilling at depth

<100_m

Depth potential has been untested with the majority of previous drilling focused on near surface oxide material

Multiple regional targets

+20 Brownfield and Greenfield

Multiple brownfield and greenfield targets, including historic open cut and underground mines and a plethora of underexplored/untested targets

Alto offers exposure to the significant exploration and growth potential of a historic and underexplored Archean greenstone belt



Appendices

Resource Estimate Sandstone Gold Project

Independent JORC 2012 Resource Estimate



| Deposit | Category | Reporting cut-off (g/t Au) | Tonnage (kt) | Grade (g/t Au) | Contained Gold (oz) |
|---------------------------------------|-----------|----------------------------|--------------|----------------|---------------------|
| Lord Henry | Indicated | 0.8 | 1,200 | 1.6 | 65,000 |
| TOTAL INDICATED | | | 1,200 | 1.6 | 65,000 |
| Lord Henry | Inferred | 0.8 | 110 | 1.3 | 4,000 |
| Lord Nelson | Inferred | 0.8 | 1,820 | 1.9 | 109,000 |
| Indomitable Camp Vanguard Camp | Inferred | 0.3 - 0.5 | 2,580 | 1.5 | 124,000 |
| Havilah & Ladybird | Inferred | 0.5 | 510 | 1.8 | 29,000 |
| TOTAL INFERRED | | | 5,020 | 1.7 | 266,000 |
| TOTAL INDICATED & INFERRED | | | 6,220 | 1.7 | 331,000 |

For reporting purposes at a high level, totals have been rounded. Rounding may result in some slight discrepancies in totals reported.

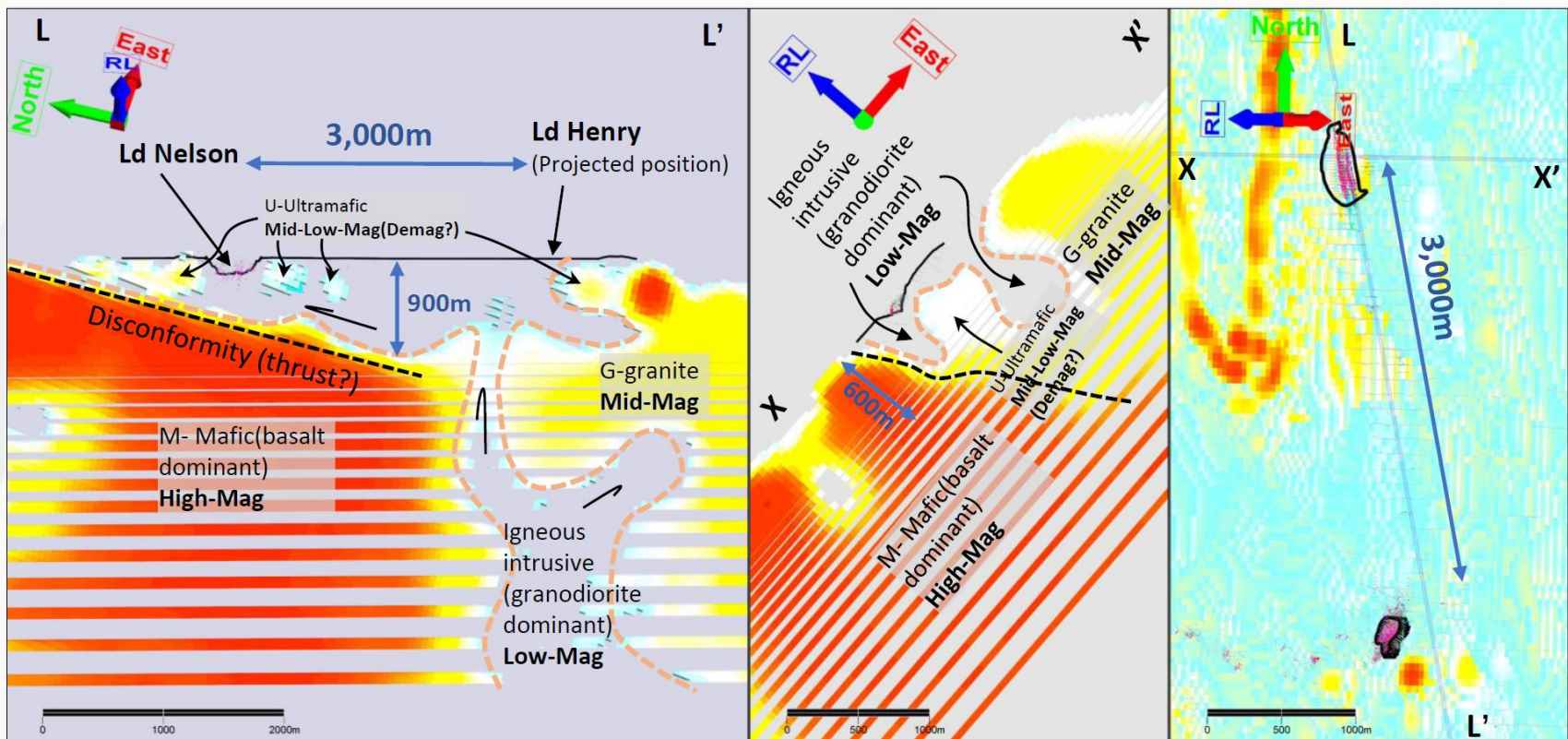
There is a low level of geological confidence associated with Inferred Mineral Resources and there is no certainty that further exploration work will result in the conversion of all Inferred Mineral Resources to Indicated Mineral Resources.

All material assumptions and technical parameters underpinning the 2017, 2018, 2019 and 2020 JORC (2012) Mineral Resource estimates continue to apply and have not materially changed since last reported.

Lords corridor - exploration model

Sandstone – an underexplored greenstone belt

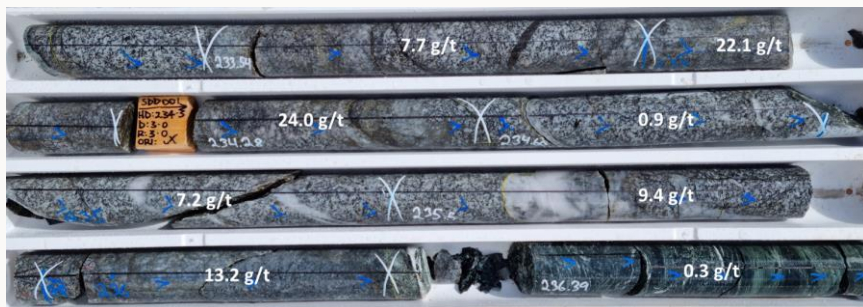
The Lord Nelson and Lord Henry deposits are hosted predominantly within a granodiorite intrusion with sheared remnant ultramafic layers (deposition of high grade gold plates on the contact zone (granite / ultramafic). The granodiorite intruded pre-existing disconformity (contract/thrust) which represents the contact zone between the high-magnetic basaltic package and the Archean granite (Diemals Dome) in the southern part of the Sandstone Gold Project. High-grade, shallowly plunging shoots are interpreted to be controlled by the pre-existing disconformity (thrust).



Recent Diamond Core – Lord Nelson & Orion

Maiden diamond drilling

- **36m @ 2.0 g/t gold** from 203 incl. **3.6m @ 10.5 g/t gold** from 232.8m SDD001
- **21m @ 3.5 g/t gold** from 76m SDD003
- **29.5m @ 1.5 g/t gold** from 192m SDD008



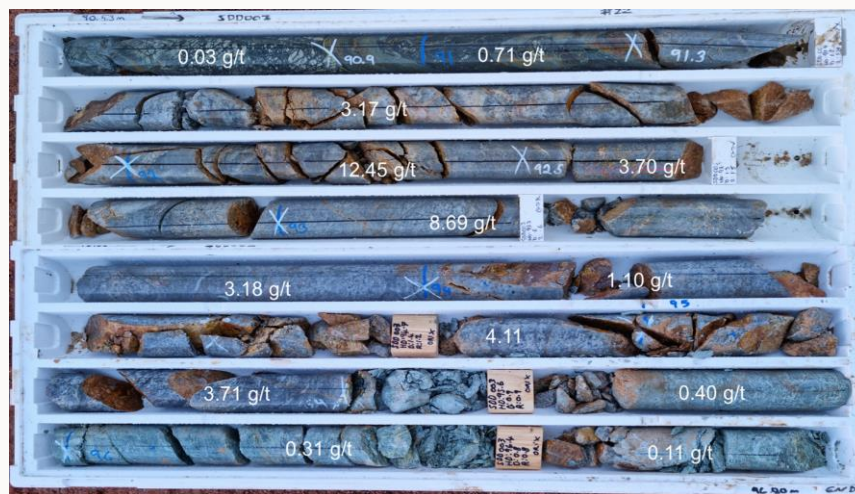
Lord Nelson HQ3 (63.5mm) diamond core 233.2m to 236.8m showing strong sulphide rich alteration. SDD001.



Orion Lode HQ3 (63.5mm) diamond core from 82.71m to 86.7m showing high-grade gold mineralisation in oxide and transitional zone. SDD008.



Lord Nelson NQ (47.6mm) diamond core from 213.42m to 222.58m showing high-grade gold mineralisation in strong quartz-pyrite veining, along the contact between silicified granodiorite and strong foliated ultramafic contact. SDD008



Orion Lode HQ3 (63.5mm) diamond core from 90.53m to 96.8m showing high-grade gold mineralisation in pyrite-quartz veining, along the contact between silicified granodiorite and strong foliated ultramafic contact. SDD003.

Orion Lode – a recent discovery

Wide, shallow high-grade gold

Located 200m south of Lord Nelson

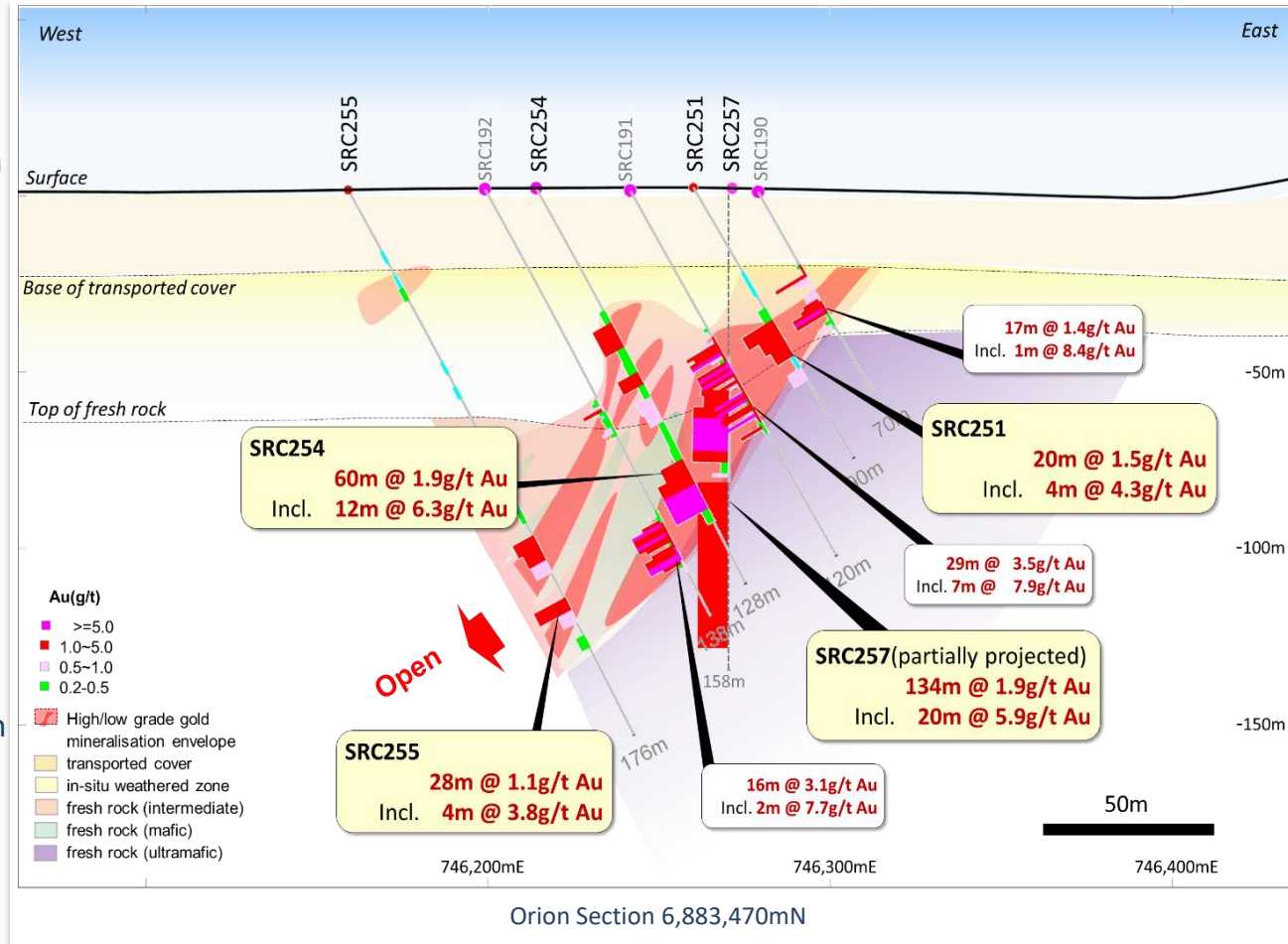
Drill intersections include:

- **134m @ 1.9 g/t gold** from 24m
- **60m @ 1.9 g/t gold** from 44m
- **29m @ 3.5 g/t gold** from 49m
- **16m @ 3.1g/t gold** from 105m

Excellent continuity

Mineralisation remains open along strike and down plunge

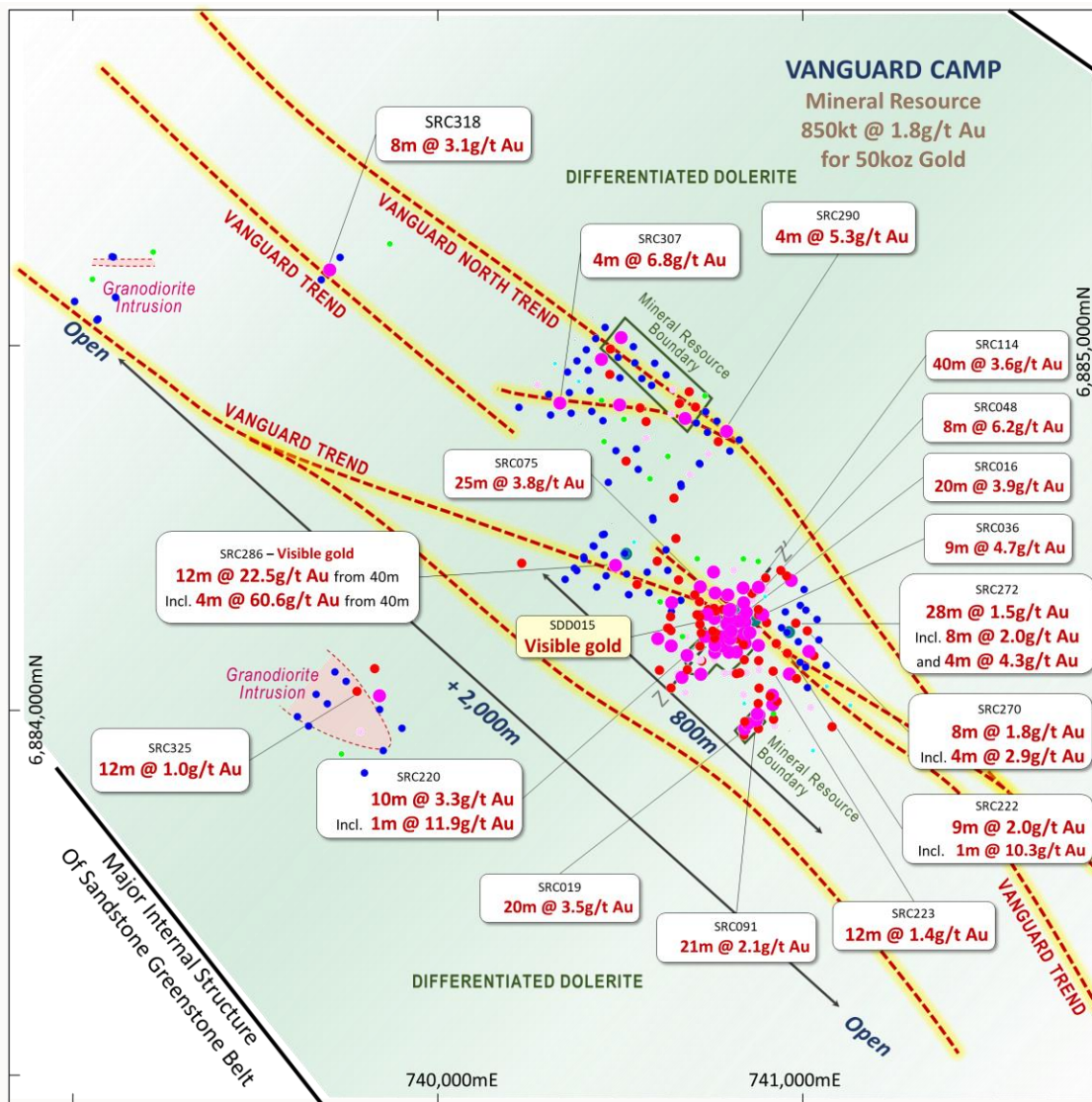
Same style of mineralisation as the Lord Nelson FW and HW Lodes with significant gold mineralisation hosted in granodiorites



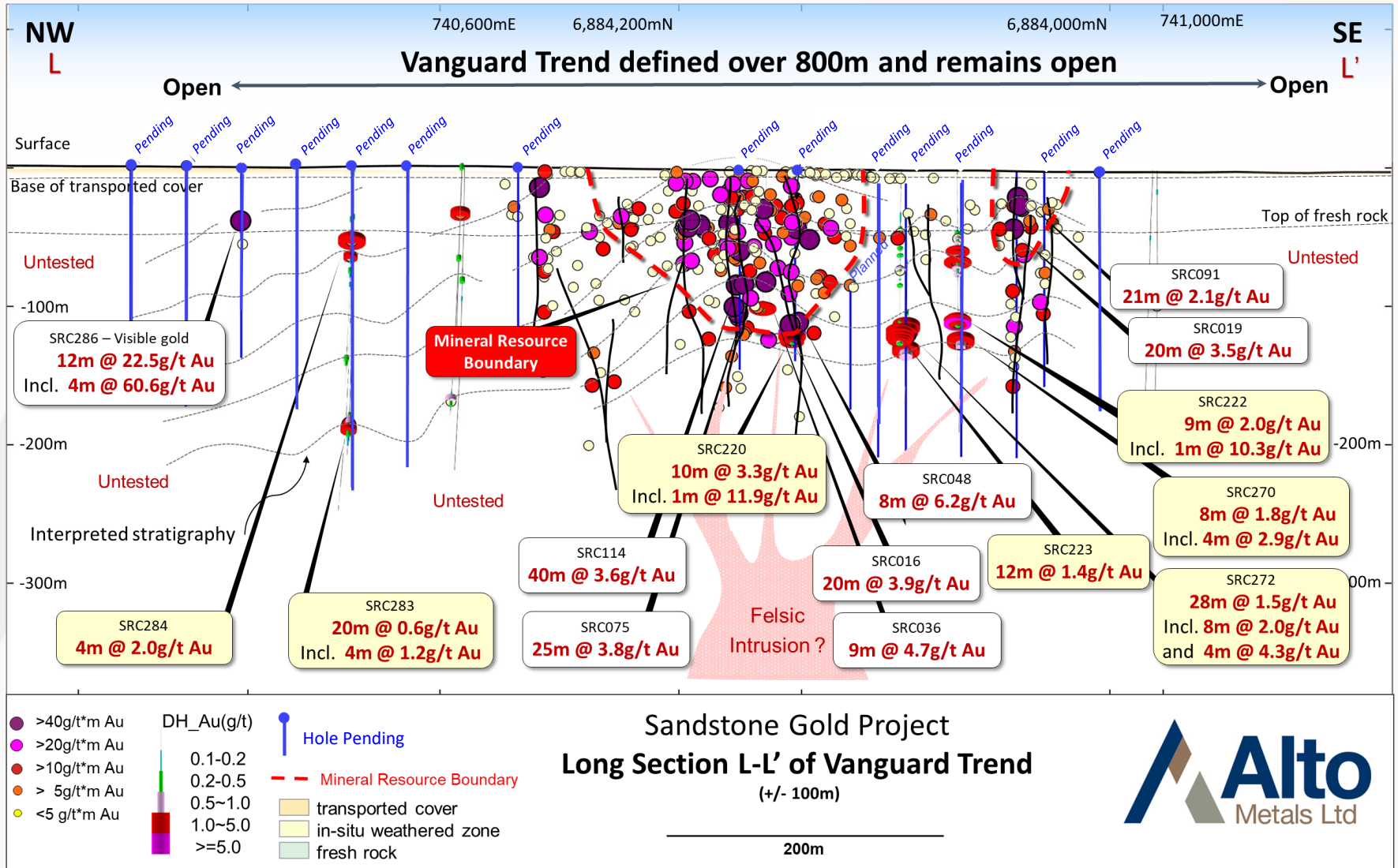
Shallow, high-grade visible gold from Vanguard

A priority regional target, with mineralisation defined over 2 kilometres

- **Mineral Resource Estimate (JORC 2012)**
856kt @ 1.8g/t gold for 50,000oz
- **2,000m long x 800m wide corridor**
- **Major NW trending structure, open from surface and down plunge**

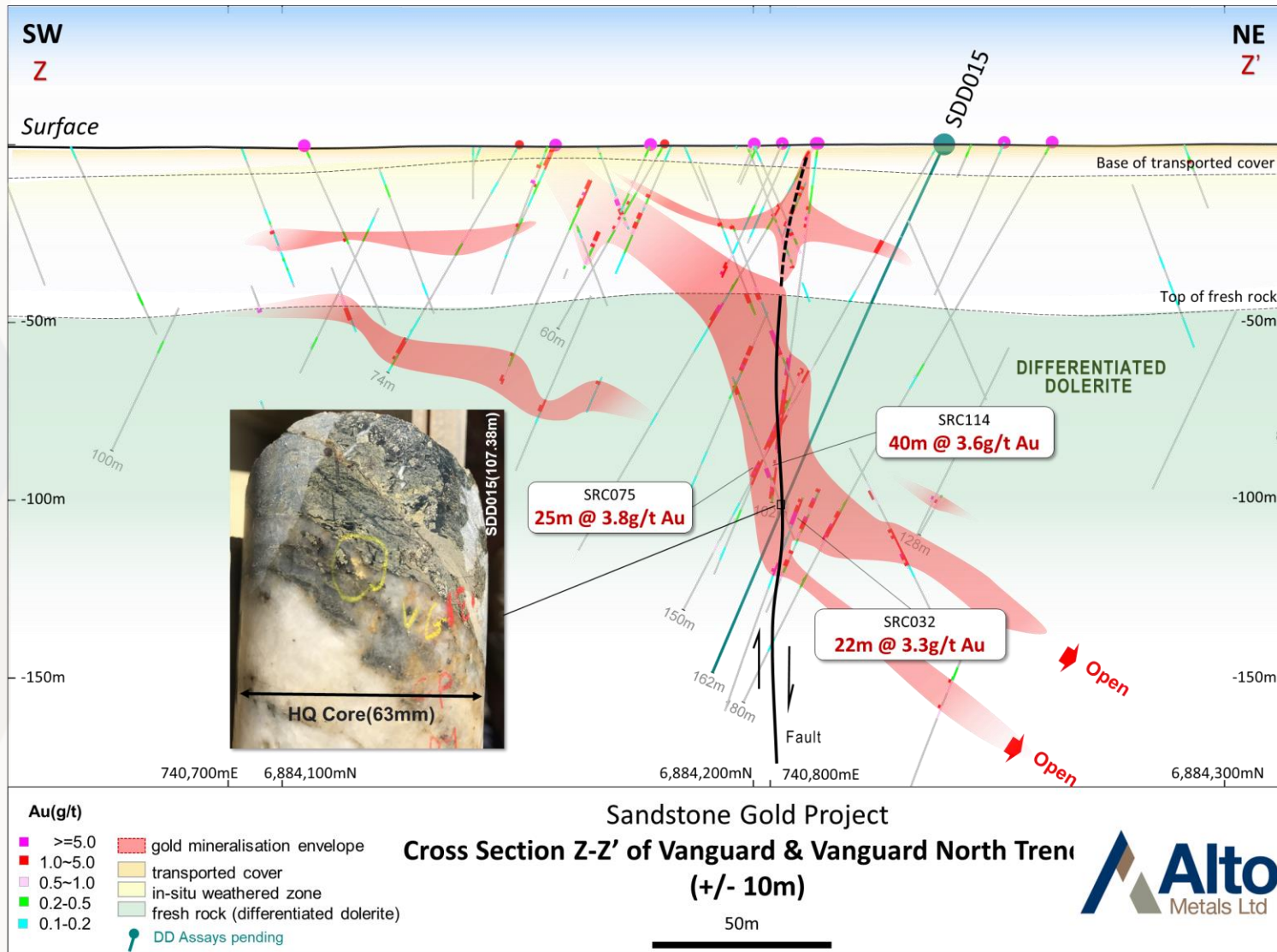


Vanguard Section L-L'



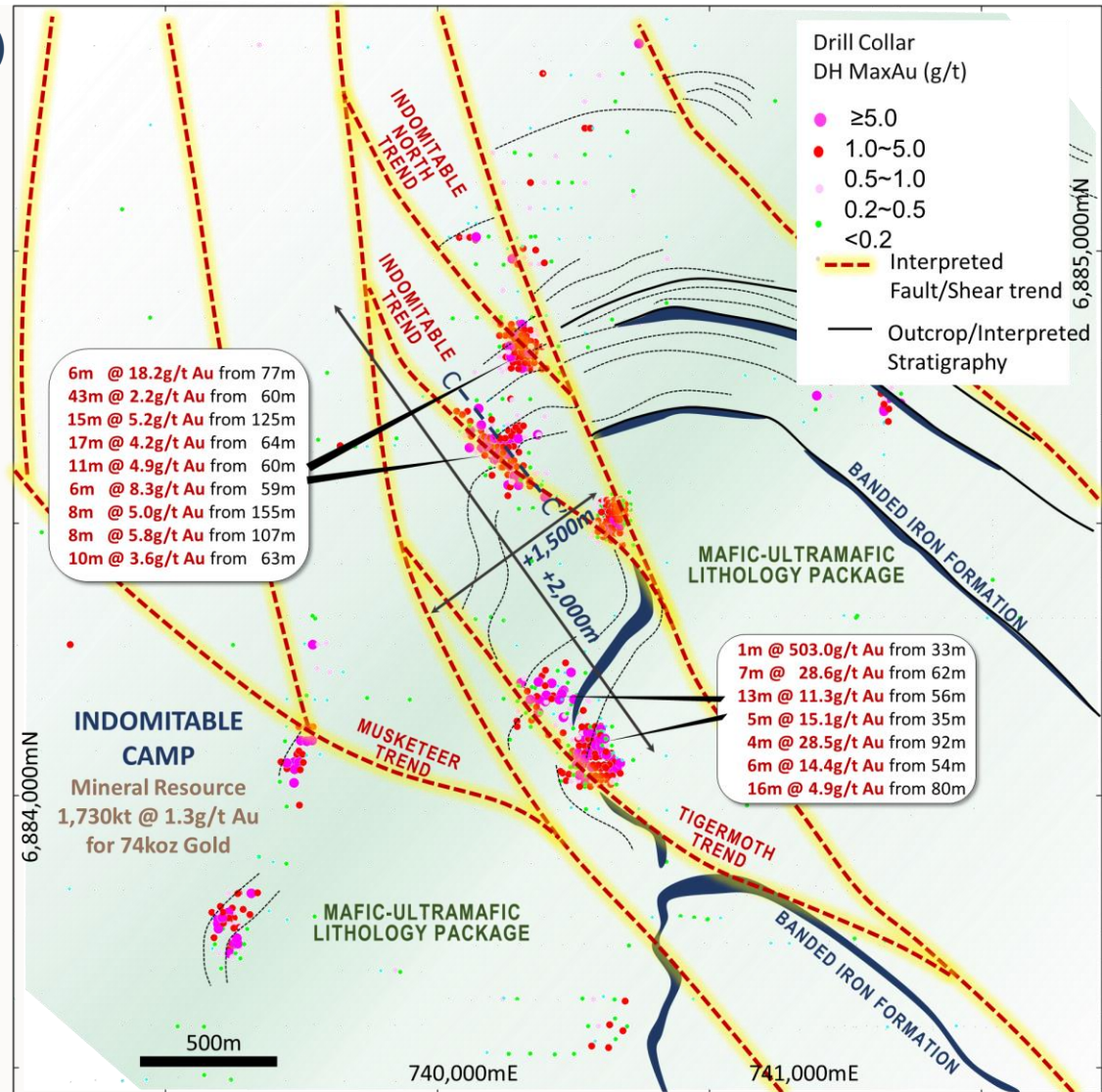
Vanguard Cross Section Z-Z'

Diamond core intersecting laminated quartz – assays pending

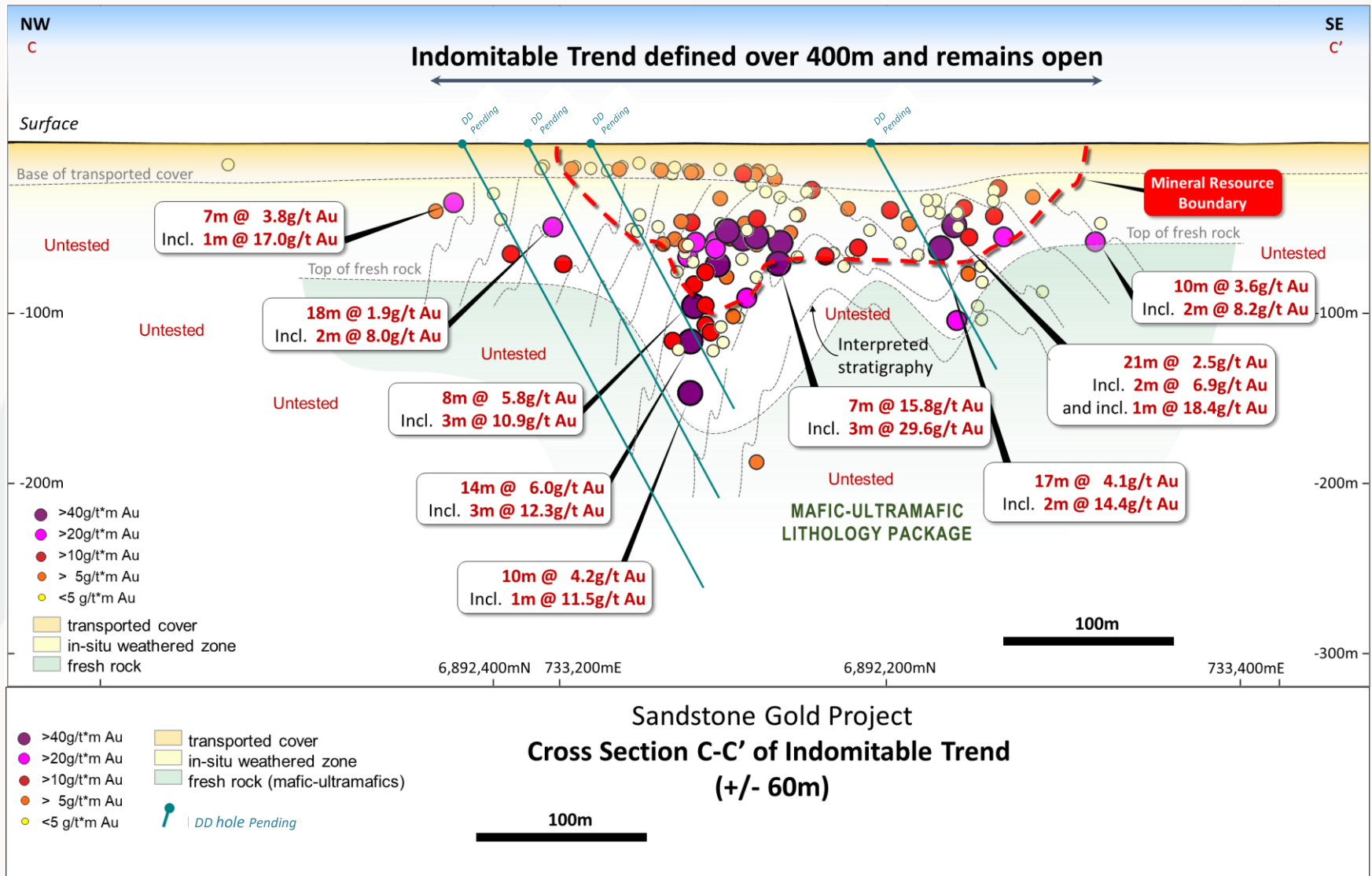


Indomitable Camp

- Mineral Resource Estimate (JORC 2012)
1.7Mt @ 1.3g/t gold for 74,000oz
- 2,200m long x 1,000m wide gold corridor
- Major NW trending structure, open from surface and down plunge
- Drill results include
 - 43m @ 2.2 g/t gold from 60m
 - 17m @ 4.2 g/t gold from 64m
 - 6m @ 18.2 g/t gold from 77m
 - 8m @ 5.8 g/t gold from 107m
 - 15m @ 5.2 g/t gold from 125m
 - 1m @ 503 g/t gold from 33m
 - 7m @ 28.6 g/t gold from 62m



Indomitable Section C-C'



Multiple regional targets

Numerous early stage to drill ready targets to be tested

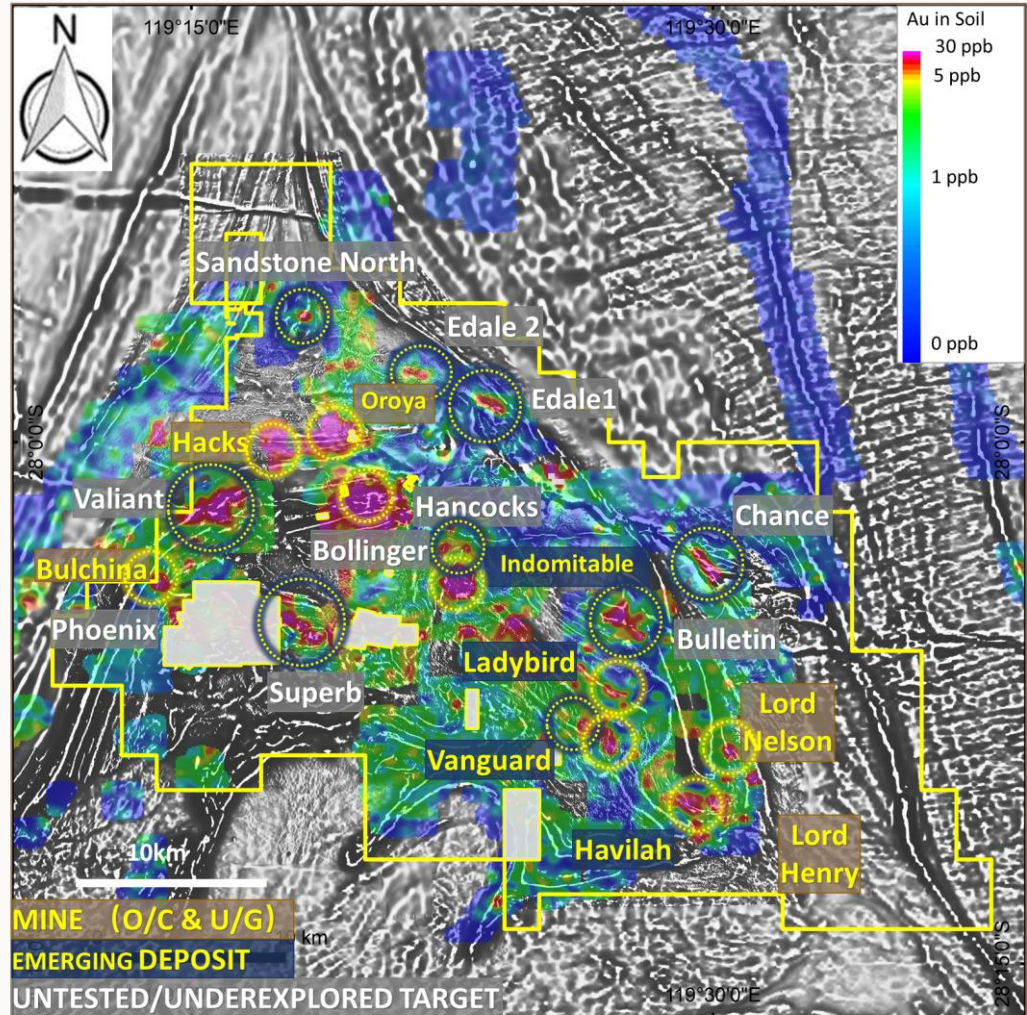
Gold in soil anomalies define known deposits

- Lord Nelson
- Ladybird & Havilah
- Vanguard & Indomitable Camps
- Bull Oak
- Oroya
- Hacks
- Bulchina

Unknown gold in soil anomalies

- Bulletin
- Bollinger
- Chance & Edales
- Superb
- Valiant
- Sandstone North

Significant pipeline of brownfield and greenfield targets to be systematically tested



A photograph of a mining site under a blue sky with scattered white clouds. In the foreground, there are numerous white bags of material. In the background, a large yellow and blue mining truck is parked on a dirt road, with other equipment visible further up the slope.

A WEST AUSTRALIAN ADVANCED GOLD EXPLORER IN A HISTORIC GOLD BELT

Level 2, 12-14 Thelma Street, West Perth WA | T: +61 8 9381 2808

E: admin@altometals.com.au | W: altometals.com.au



Follow us @altometalsltd

ASX: AME