A photograph of a Western Australian landscape with a clear blue sky, a line of green bushes, and a rocky outcrop in the distance. The image is framed by a light green wave at the bottom.

Exploring new uranium opportunities in Western Australia

**Simon Fleming: Managing Director ENU,
Mines and Money - Hong Kong,
March 2013**

Disclaimer



This document has been prepared by Enterprise Uranium Ltd (“ENU” or “the Company”) to provide an update on the Company’s uranium projects to investors and potential new shareholders. This presentation should be read in conjunction with other public announcements and reports (including financial reports and disclosure documents) released by Enterprise Uranium Ltd. Any statements, opinions, projections, forecasts or other material contained in this document do not constitute any commitments, representations or warranties by ENU and associated entities or its directors, agents and employees. Except as required by law, and only to the extent so required, directors, agents and employees of Enterprise Uranium shall in no way be liable to any person or body for any loss, claim, demand, damages, costs or expenses of whatsoever nature arising in any way out of, or in connection with, the information contained in the document. This document includes certain statements, opinions, projections, forecasts and other material, which reflect various assumptions. The assumptions may or may not prove to be correct. Recipients of the document must make their own independent investigations, consideration and evaluation of the opportunity to invest in the Company. By accepting this document the recipient agrees that if it proceeds further with its investigations, consideration or evaluation of the opportunity to invest in the Company it shall make and rely solely upon its own investigations and inquiries and will not in any way rely upon the document.

“to create shareholder value through discovery & development of “Tier 1” uranium deposits...”

Through:

- The use of Government supplied, pre-competitive data (particularly aeromagnetics and radiometrics, mapping).
- The identification of new uranium Provinces.
- Gain first mover advantage by dynamic pegging of land.
- Define & develop large, high grade, low cost uranium mines.
- Working constructively with stakeholders & using world’s best practice exploration techniques.

A Compelling Investment



First-Class Assets

- Five 100% owned uranium projects with strong uranium discovery potential, all located in Western Australia.
- Low sovereign risk jurisdiction with a uranium mine being developed.

First-Class Team

- Experienced management and skilled technical team to maximise discovery potential.

First-Class Investment Opportunity

- Strong IPO funding support from China
- Anticipated strong uranium market with supply gap emerging
- First drill results anticipated in second Quarter 2013



Capital Structure:

Ordinary Shares:	68.3M
Options:	12.8M
Market Capitalisation: @ \$0.075	\$5.1M
Cash at Bank:	\$4.3M*

• * = As at 31/12/2012

Substantial Shareholders:

Sinotech Minerals Expln*	21%
Enterprise Metals	19.8%
CrownLuxe*	11%
RDI Resources*	3.7%

* = Chinese Investors

Management:

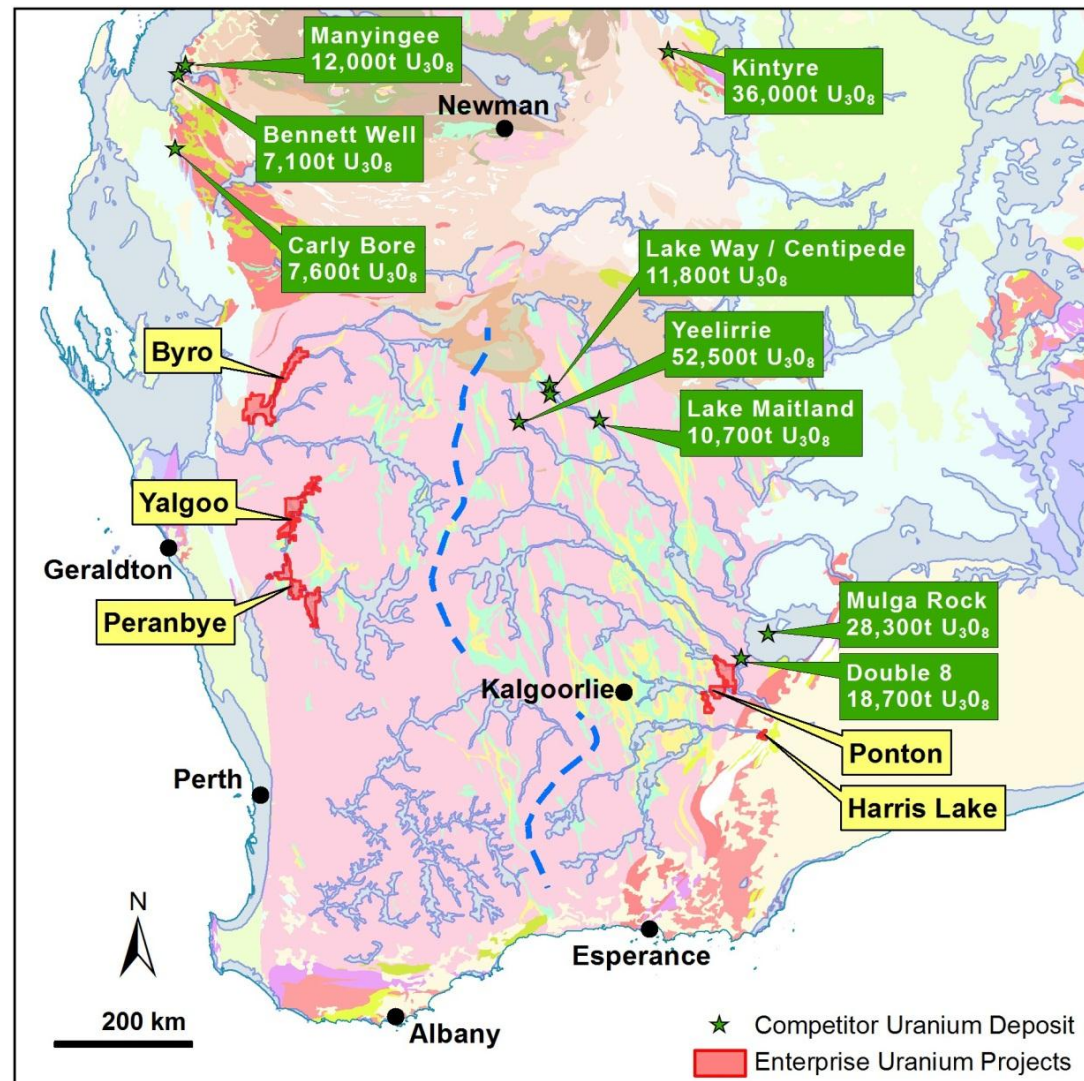
Ms Anna Mao:	(Non-Exec Chairperson) (Sinotech Director)
Simon Fleming:	(Managing Director)
Dr Zhen Huang:	(Non-Exec Director) (Sinotech Director)
Dermot Ryan:	(Non-Exec Director) (MD, Enterprise Metals)
Michael Atkins:	(Non-Exec Director)

ENU boasts an experienced Board & senior management team with extensive operating and exploration experience

Projects

- Byro: 1,943 km²
- Yalgoo: 1,291 km²
- Peranbye: 1,443 km²
- Ponton: 1,216 km²
- Harris Lake: 76 km²

~6,000 km² prospective for calcrete and palaeo-channel hosted uranium deposits



Ponton Project

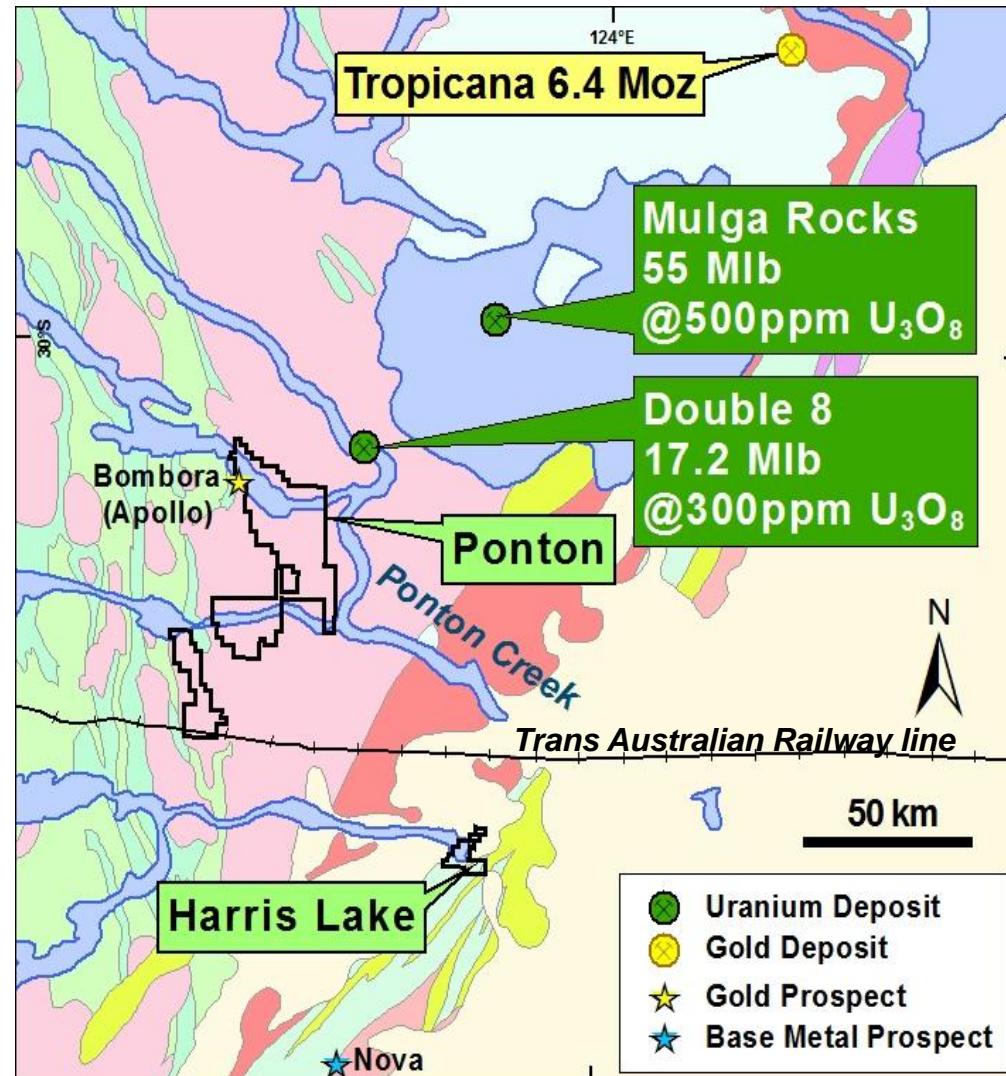
Location

- 130km east of Kalgoorlie
- Covers dry Lake Rebecca and Lake Yindana and underlying palaeo-valleys

Under-explored

- Airborne Magnetics / Radiometrics flown by WA Government
- Enterprise AEM survey in 2012 defined palaeo-channel targets

Drilling planned to test targets



Ponton Project

Uranium Source

- Radioactive Archaean granites

Transport

- Major river system with huge catchment

Economic Models

- Uranium deposition in Sand / Sandstone

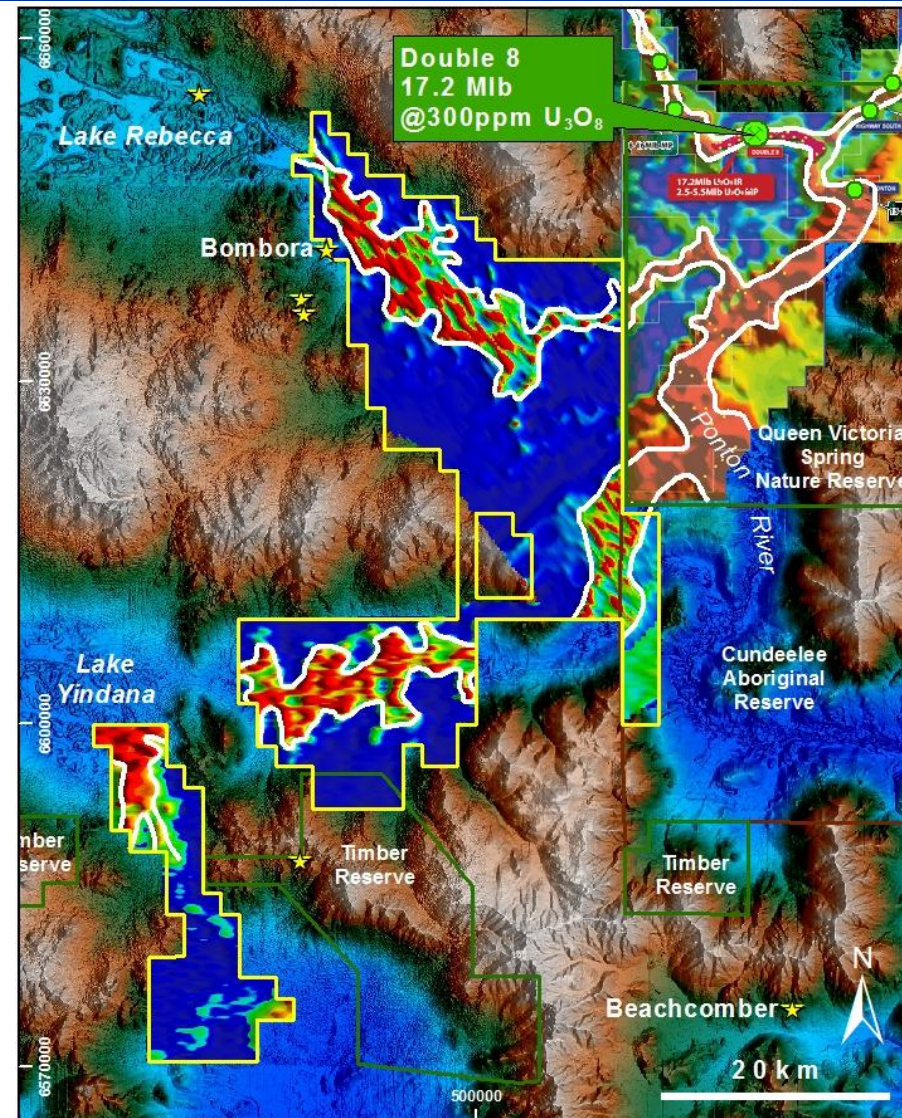
Known Uranium Province

- Mulga Rocks Deposits
- Double 8 Deposits

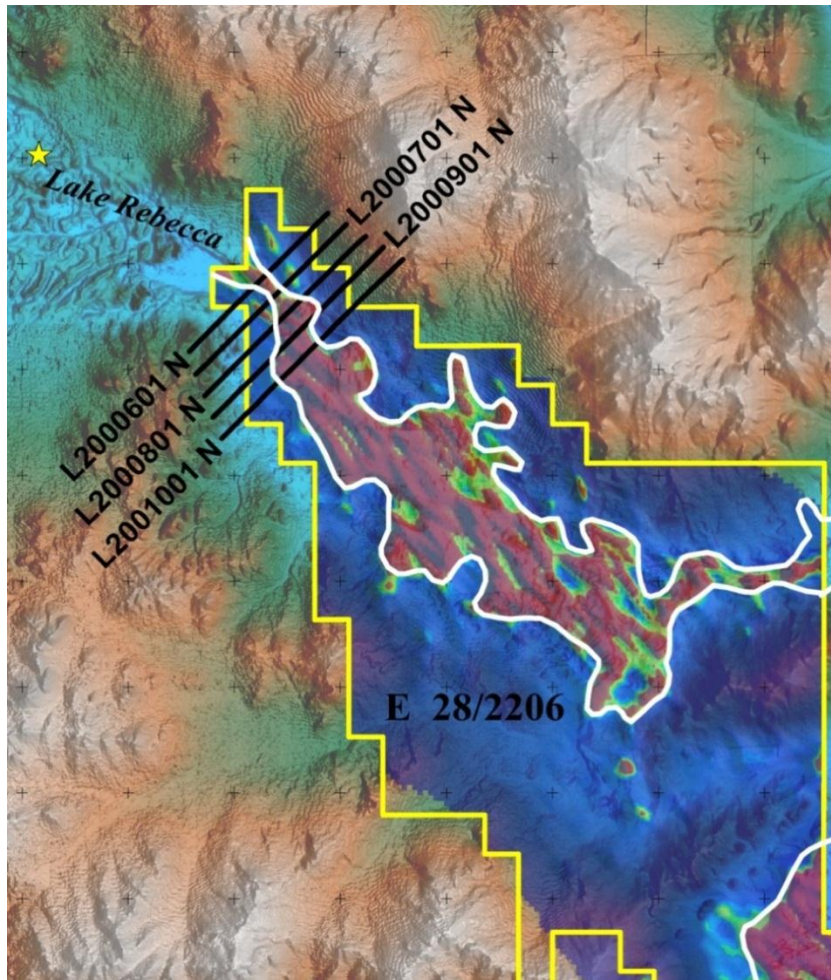
Large Land Holding

- > 80 km length of prospective drainage
- 1,216 km² of tenements

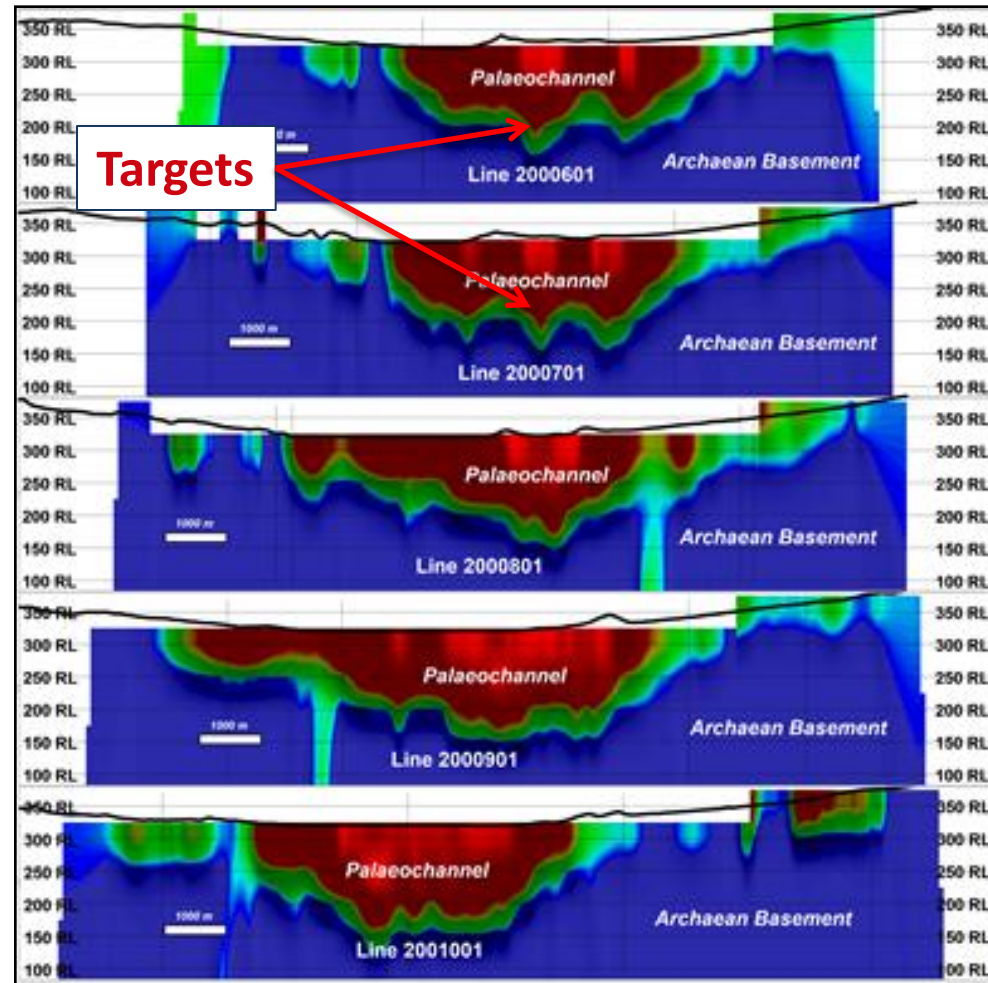
AEM Channel 15 over topography



Ponton Project



AEM Channel 15 over topography



Conductivity Depth Image cross section

Summary

- Enterprise has used extensive Western Australian government provided, (free) pre-competitive data to locate new exploration project areas.
- High grade (>400ppm U) mineralisation at or near surface.
- Airborne EM used to map palaeo-channels along ancient river valleys and identify drill targets.
- Low sovereign risk jurisdiction with a uranium mine being developed.
- Experienced management and technical team will maximise discovery potential.



A photograph of a natural landscape with a clear blue sky, a line of green bushes, and a rocky outcrop in the background. The foreground is a light green field.

Thank you