

31 July 2013

JUNE 2013 QUARTERLY ACTIVITIES REPORT

CORPORATE

ASX CODE: ENU
Shares on Issue: 68,280,439
Shares quoted: 64,448,272
Options: 12,818,132
Market Cap: \$2.2M
Cash at Qtr Top 20: \$3.2M
Shareholders: 72%

CONTACT DETAILS

Level 1, 640 Murray Street
West Perth WA 6005
PO Box 1906
West Perth WA 6872
Telephone: +61 8 9436 9240
Facsimile: +61 8 9436 9220

DIRECTORS

Anna Mao
Non-Executive Chairperson

Dermot Ryan
Non-Executive Director
Acting CEO

Dr Zhen Huang
Non-Executive Director

Michael Atkins
Non-Executive Director

PROJECTS

Byro

Yalgoo

Peranbye

Ponton

Harris Lake

HIGHLIGHTS

Byro Project

- ❖ Baseline Radiological surveys planned
- ❖ Heritage surveys ongoing
- ❖ POW submitted and approved
- ❖ \$74,900 awarded under the Exploration Incentive Scheme (EIS) of the WA State Government Royalties for Regions Co-funded Government – Industry Drilling Program.

Ponton Project

- ❖ Baseline Radiological surveys planned
- ❖ Heritage surveys completed
- ❖ POW submitted and approved
- ❖ \$90,000 awarded under EIS Co-funded Drilling Program.

Harris Lake Project

- ❖ Baseline Radiological surveys planned
- ❖ Heritage surveys ongoing
- ❖ Flora and Fauna Survey commenced

Peranbye Project

- ❖ Consultation with various parties to gain access for geological work programs continued.

Yalgoo Project

- ❖ Baseline Radiological surveys ongoing
- ❖ Heritage surveys completed
- ❖ POW submitted and approved

CORPORATE

- ❖ Cash at bank at 30 June 2013: \$3.2 million.
- ❖ Mr. Dermot Ryan was appointed as acting Chief Executive Officer following the resignation of the former Managing Director.

SUMMARY OF EXPLORATION ACTIVITIES

PERANBYE PROJECT

The Peranbye Project is approximately 300km north of Perth, close to the agricultural towns of Perenjori and Morawa. The tenements cover the drainage and tributaries of Lakes Moore, Monger and Weelhamby.

Consultation with Government departments and Native Title holders is in progress in order to gain access for drill testing the first class uranium targets within the project area. The Company has previously received a funding grant of up to \$130,000 from the WA State Government from the *Royalties for Regions Co-funded Government – Industry Drilling Program, Round 6*. These funds are available to be used prior to 31 December 2013.

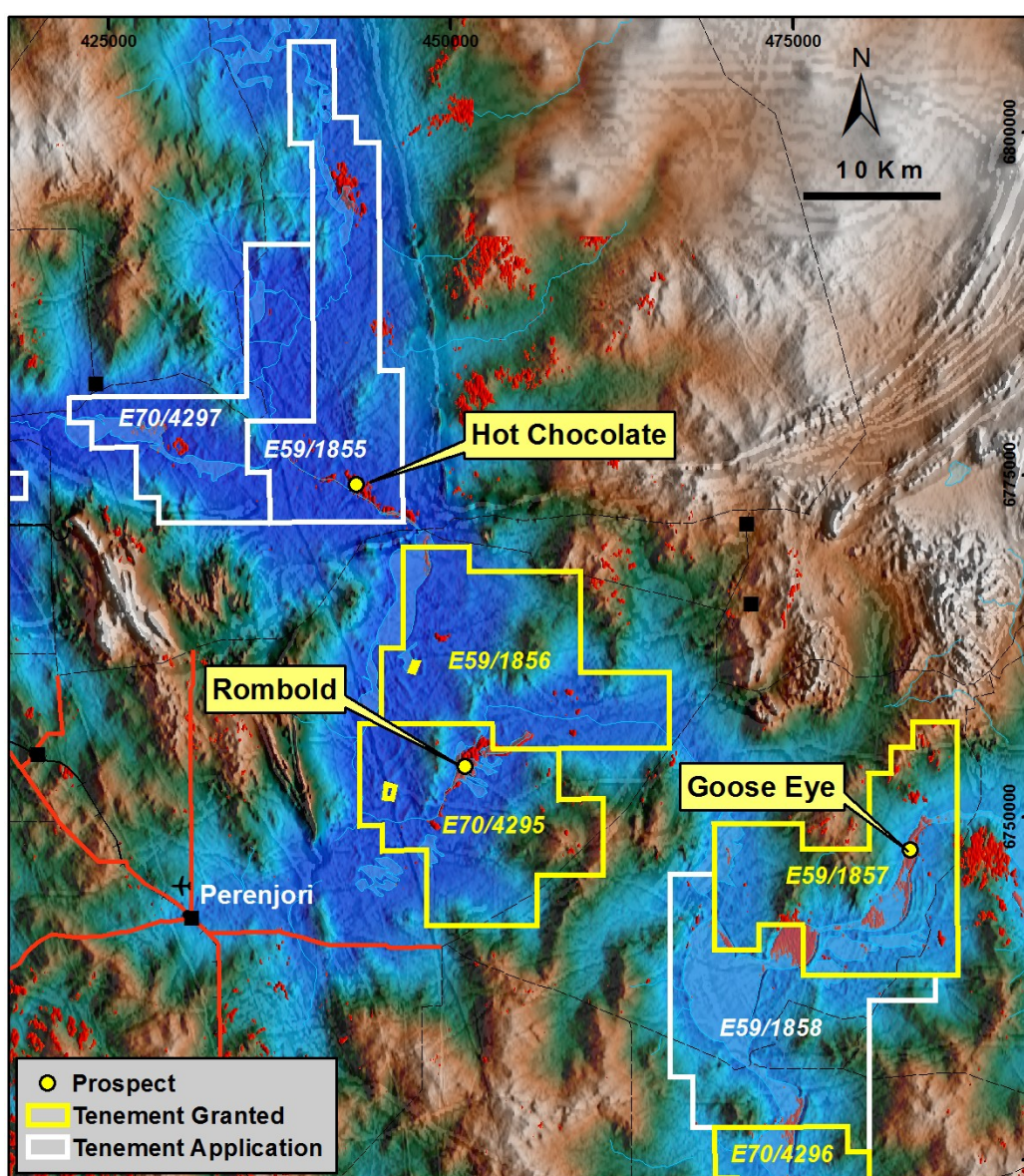


Figure 1: Peranbye Project, DTM showing Uranium Anomalies

PONTON PROJECT

The Ponton Project is located approximately 130km east of Kalgoorlie and 680km east northeast of Perth. The Project covers the drainage and tributaries of the Lake Rebecca, Lake Yindana and Lake Roe drainage systems.

The WA State Government has recently granted the Company an allocation of \$90,000 from the *Royalties for Regions Co-funded Government – Industry Drilling Program, Round 7*. These funds are available to be used prior to 30 June 2014, however a drilling program is planned for the latter half of 2013.

During the Quarter, the Company applied for additional tenure in the vicinity of Lake Yindana.

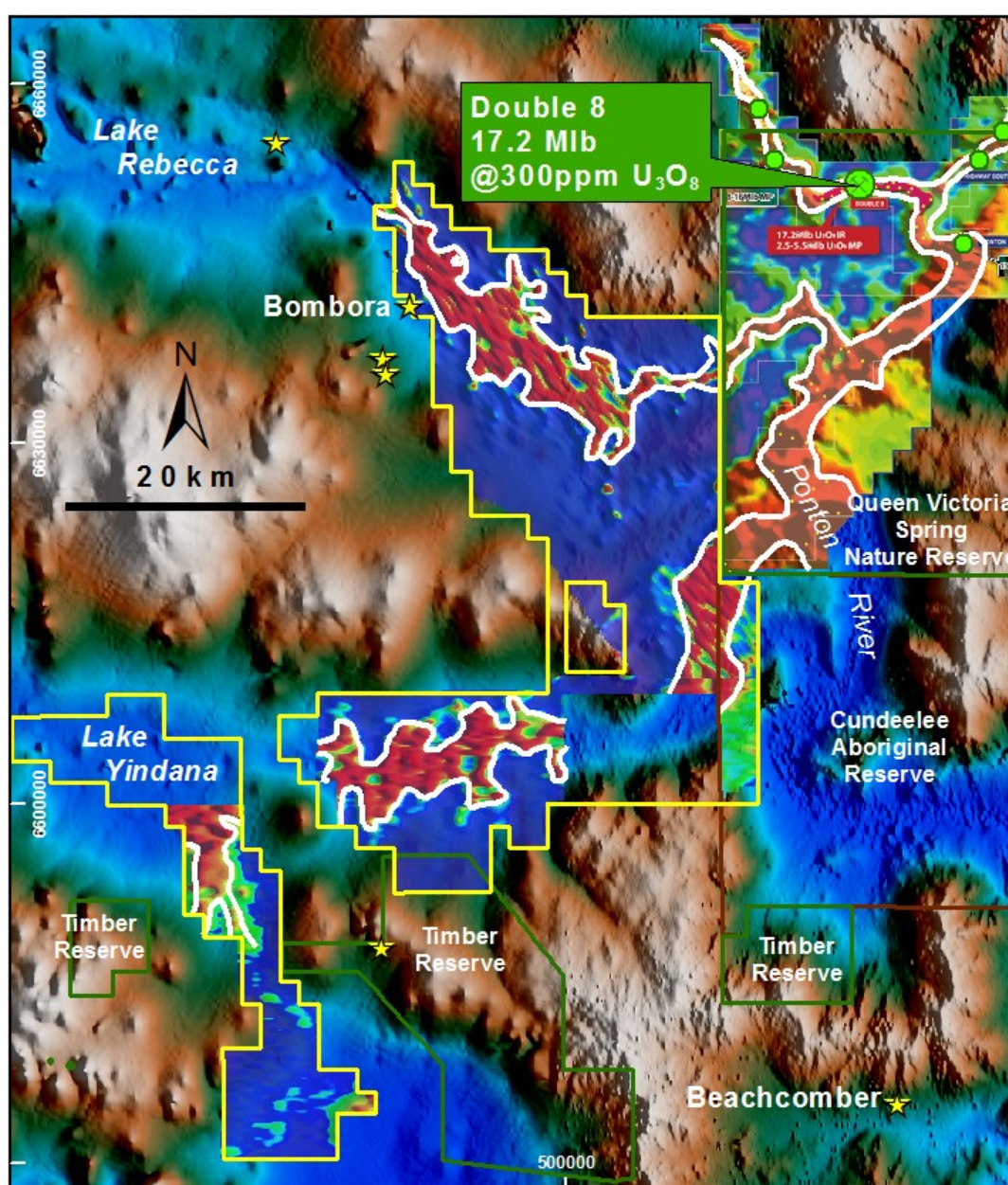


Figure 3: Ponton Project. AEM Image Defining Palaeochannels

BYRO PROJECT

The Byro Project is located approximately 250km northeast of Geraldton and 600km north of Perth in the Murchison Province of Western Australia. The Project covers the drainage channels of the intermittent Murchison River.

Drilling at Byro is expected to start later in the year. The Company received a funding agreement for up to \$74,900 from the WA State Government from the *Royalties for Regions Co-Funded Government – Industry Drilling Program, Round 7*. These funds are available to be used prior to 30 June 2014, however a drilling program is planned for the latter half of 2013.

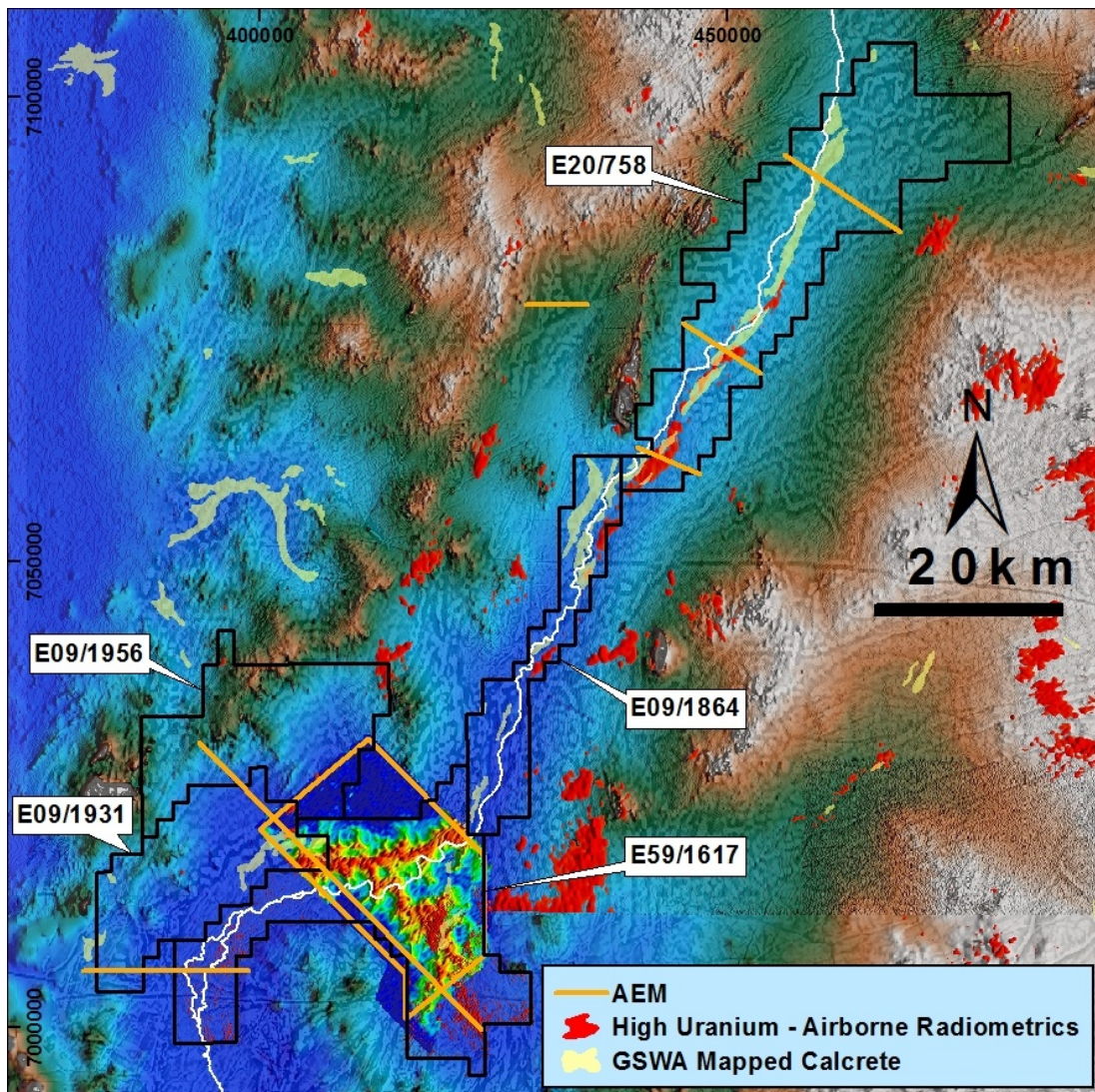


Figure 4: Byro Project. AEM Image Defining Palaeochannel over Wooleen Delta

HARRIS LAKE PROJECT

The Harris Lake Project is located 25km south of the town of Zanthus on the trans-Australian rail line and 200km east of Kalgoorlie. The Project covers a substantial portion of the Harris Lake salt lake system including the southern outlet of the lake, which drains the Archaean Yilgarn Craton.

The Company's airborne radiometric survey has defined a strong uranium responses at surface, and the Company's 2012 airborne EM survey has defined a deep palaeochannel below the radiometric anomaly.

The Company received a funding agreement for up to \$150,000 from the WA State Government from the *Royalties for Regions Co-funded Government – Industry Drilling Program, Round 6*. These funds are available to be used prior to 31 December 2013.

Drilling testing of radiometric and EM targets is expected to commence in the latter half of 2013, subject to completion of a Flora & Fauna survey.

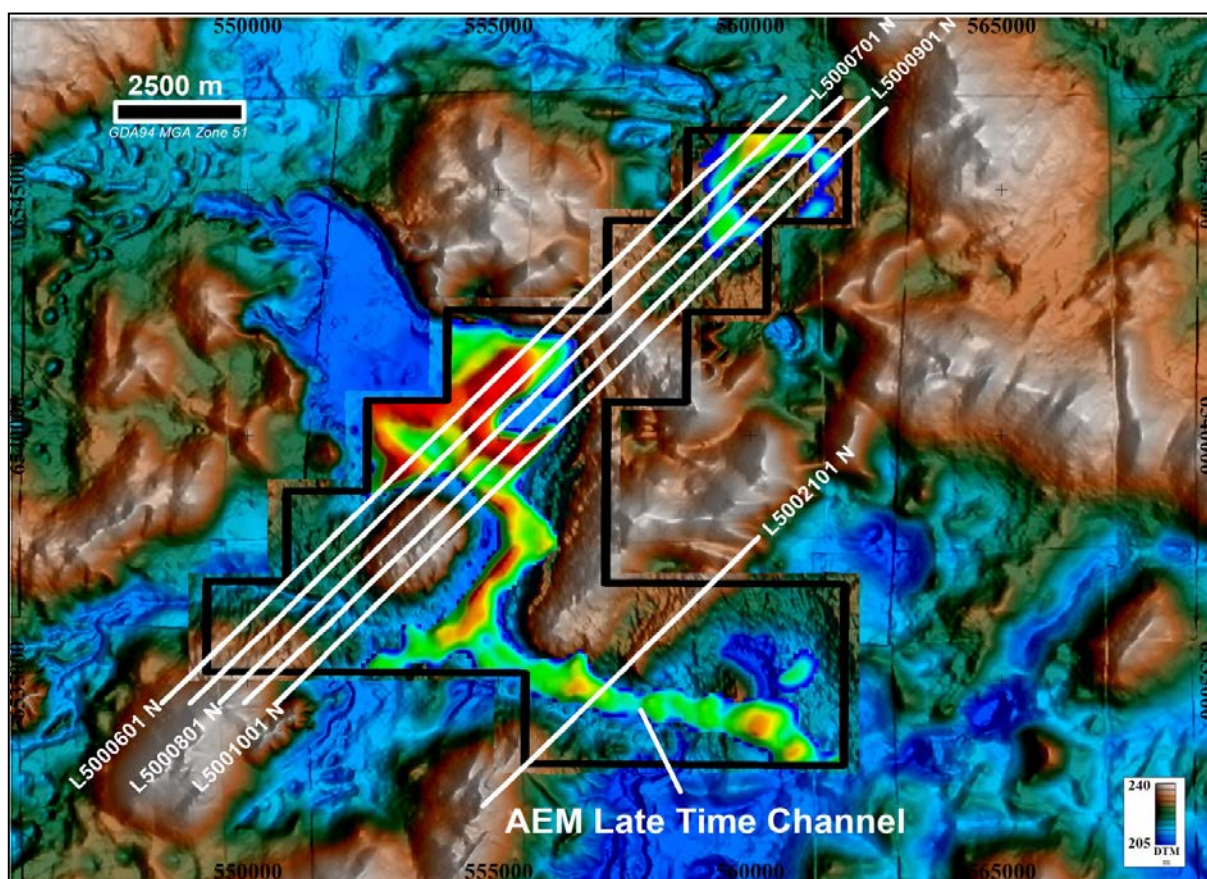


Figure 5: Lake Harris Project. AEM Image Defining Palaeochannel

YALGOO PROJECT

The Yalgoo Project is located around the township of Yalgoo in the Murchison region of Western Australia and approximately 400km north of Perth. The Project comprises seven granted ELs, four EL applications, 3 granted Prospecting Licenses and one Prospecting License (PL) applications covering a total area of 1,254km².

Preliminary shallow aircore drilling at Muggaburna in 2012 returned encouraging results from down hole natural gamma logging with nine holes yielding grade x thickness values over 200ppm eU30S*metres. The better intersections are shallow (0-4m depth) and are centred on the uraniferous calcrete exposure in the Muggaburna creek bed in a zone 200-450m wide and 900m long. Mineralisation appears open to the NW and SE. Laboratory analytical results correlate with gamma logging results. The best results were 1 m @ 841 ppm U30S, in hole YGAC083 and 1 m @ 447ppm U30S in hole YGAC084, 100m away.

The Project tenements include many large areas of calcrete, with no apparent exploration history for uranium. These areas are often associated with elevated U channel response from the airborne radiometric survey data and remain prospective for calcrete-hosted uranium deposits. Palaeochannel sand-hosted uranium mineralisation is also a potential target in the Project area.

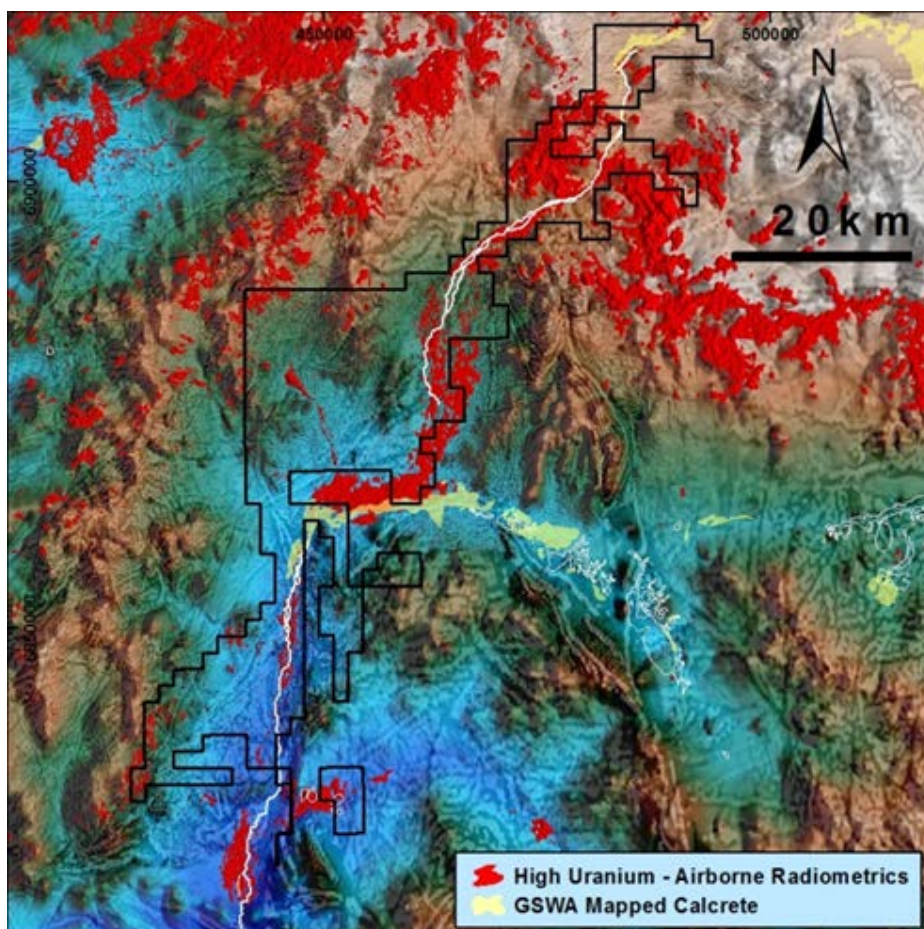


Figure 6: Yalgoo Project DTM showing Uranium Anomalies

SUMMARY OF CORPORATE ACTIVITIES

No significant corporate activity during the Quarter.

COST REDUCTION PROGRAM

Commencing 1st July 2013, the Company has implemented a number of cost saving initiatives, including:

- 20% reduction in the Chairman and Non-Executive Directors Fees,
- 20% reduction in the Acting CEO's remuneration, and
- 80% reduction in office and field personnel;

The remaining staff are currently focused on the planning and implementation of a drilling programs in the Byro, Ponton and Harris Lake Project areas.

CASH POSITION

Cash held by the Company at 30 June 2013 was \$3.2 million, whereas the market capitalisation was \$2.2 million.

The Company received notification in late June that it had been successful in two applications (total \$164,900) for funding under the **Royalties for Regions Co-funded Government – Industry Drilling Program**, Round 7. This program is also known as the Exploration Incentive Scheme or "EIS", and is a competitive process.

The Department of Mines and Petroleum notified the Company that it is eligible for up to \$90,000 in EIS co-funding to complete drilling at Ponton, and \$74,900 to complete drilling at Byro Project. Under the EIS, funds committed by Enterprise uranium towards the approved drill programs will be matched by funds from the State Government's program, up to the maximum grant for each project.



Dermot Ryan
Director & Acting CEO

Contact:

Telephone: 08 9436 9240

Facsimile: 08 9436 9220

Email: info@enterpriseuranium.com.au

Competent Persons Statements

The information in this report that relates to Exploration Results and Mineral Resources is based on information compiled by Mr Dermot Ryan, who is employed as the Acting CEO of the Company through geological consultancy Xserv Pty Ltd. Mr Ryan is a Fellow of the Australasian Institute of Mining & Metallurgy, a Fellow of the Australian Institute of Geoscientists and has sufficient experience of relevance to the styles of mineralisation and the types of deposits under consideration, and to the activities undertaken, to qualify as a Competent Person as defined in the 2004 Edition of the Joint Ore Reserves Committee (JORC) Australasian Code for Reporting of Exploration Results, Mineral Resources and Ore Reserves. Mr Ryan consents to the inclusion in this report of the matters based on information in the form and context in which it appears.

PROJECT LOCATIONS WESTERN AUSTRALIA 30 JUNE 2013

