

ASX ANNOUNCEMENT

INVESTOR PRESENTATION- AMVEST WEBINAR

8 October 2020



Arafura Resources Limited (ASX:ARU) ("**Arafura**" or the "**Company**") is pleased to attach a copy of the presentation which was used as the basis of the webinar hosted by Amvest Capital. Amvest is a New York City based specialist investment management and corporate finance firm.

Mr Gavin Lockyer, Arafura's Managing Director will be presenting live at the webinar. Subscribers to the Company's announcements have been sent a link to the webinar. For future webinar invitations, please subscribe to the Company's announcements at www.arultd.com.

-ENDS-

For further information contact:

Gavin Lockyer
Managing Director
+61 8 6370 2800

Media Enquiries:

Luke Forrestal
Media & Capital Partners
+61 411 479 144

Authorised by:

Catherine Huynh
Company Secretary

North American Investor Update

Amvest Webinar

7 October 2020



7/10/2020



(ASX:ARU)



Disclaimer

This presentation has been prepared by Arafura Resources Limited (Arafura, Arafura Resources or the Company) and is of a summary form only and therefore contains general background information which may not be complete. It should be read in conjunction with and full review made of Arafura Resources' disclosures and releases lodged with the Australian Securities Exchange (ASX) and available at www.asx.com.au.

This presentation contains certain statements which may constitute "forward-looking statements." Such statements are only expectations or beliefs and are subject to inherent risks and uncertainties which could cause actual values, results or performance achievements to differ materially from those expressed or implied in this presentation. No representation or warranty, express or implied is made by Arafura Resources that any forward-looking statement contained in this presentation will occur, be achieved or prove to be correct. You are cautioned against relying upon any forward-looking statement.

Except for statutory liability which cannot be excluded, each of Arafura Resources and its related body corporates and their officers, employees and advisers expressly disclaims any responsibility for the accuracy or completeness of the material contained in this presentation and excludes all liability whatsoever (including in negligence) for any loss or damage which may be suffered by any person as a consequence of any information in this presentation or any error in it or omission from it. Arafura Resources accepts no responsibility to update any person regarding any inaccuracy, omission or change in information in this presentation or any other information made available to a person, nor any obligation to furnish the person with any further information.

This presentation does not constitute an offer of any securities in Arafura Resources, in any jurisdiction, nor an invitation to apply for such securities, in any jurisdiction, and will not form part of any contract for the acquisition of Arafura shares. This presentation does not provide investment advice or financial product advice. You should obtain professional advice and carry out your own independent investigations and assessment of the information in this presentation (including any assumptions) before acting.

Information in this presentation which is attributed to a third-party source has not been checked or verified by Arafura Resources.

Mineral Resources and Ore Reserves

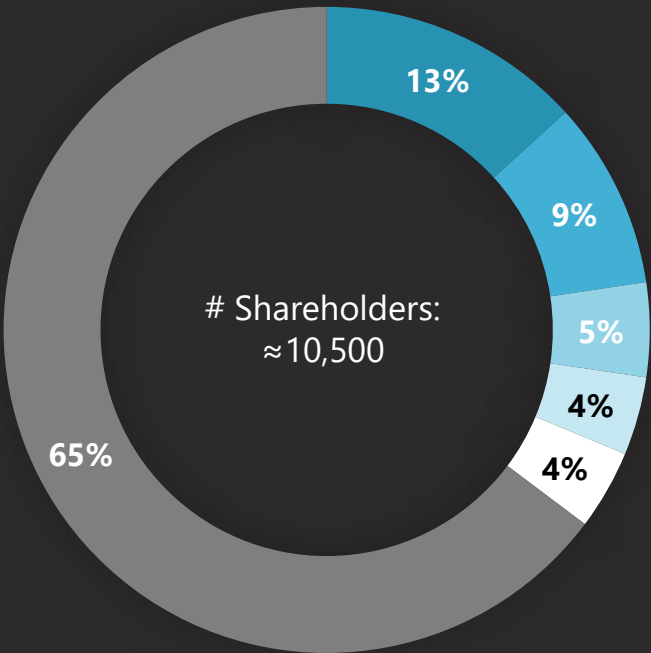
The information in this presentation that relates to Mineral Resources was released in an ASX announcement dated 7 June 2017 (Detailed Resource Assessment Completed) and was completed in accordance with the guidelines of the JORC Code (2012). The information in this presentation that relates to Ore Reserves was released in an ASX announcement dated 16 March 2020 (Major Increase in Mine Life for the Nolans Project) and was completed in accordance with the guidelines of the JORC Code (2012). Arafura Resources confirms that it is not aware of any new information or data that materially affects the information included in the original market announcements and that all material assumptions and technical parameters underpinning the estimates in the original market announcements continue to apply and have not materially changed. Arafura Resources confirms that the form and context in which the Competent Person's findings are represented have not been materially modified from the original market announcement.

Production Targets and Forecast Financial Information

The information in this presentation that relates to production targets and financial information included in this presentation is extracted from ASX announcement dated 16 March 2020 (Major Increase in Mine Life for the Nolans Project). Arafura confirms that all material assumptions underpinning the production target and forecast financial information derived from production targets set out in the announcement released on 16 March 2020 (including the cost and pricing assumptions referred to in the Company's 16 March 2020 announcement that were used in the DFS and which are set out in the Company's ASX Announcement 7 February 2019 (Nolans Project Definitive Feasibility Study)), continue to apply and have not materially changed.

Arafura & the Nolans Project

Corporate Snapshot



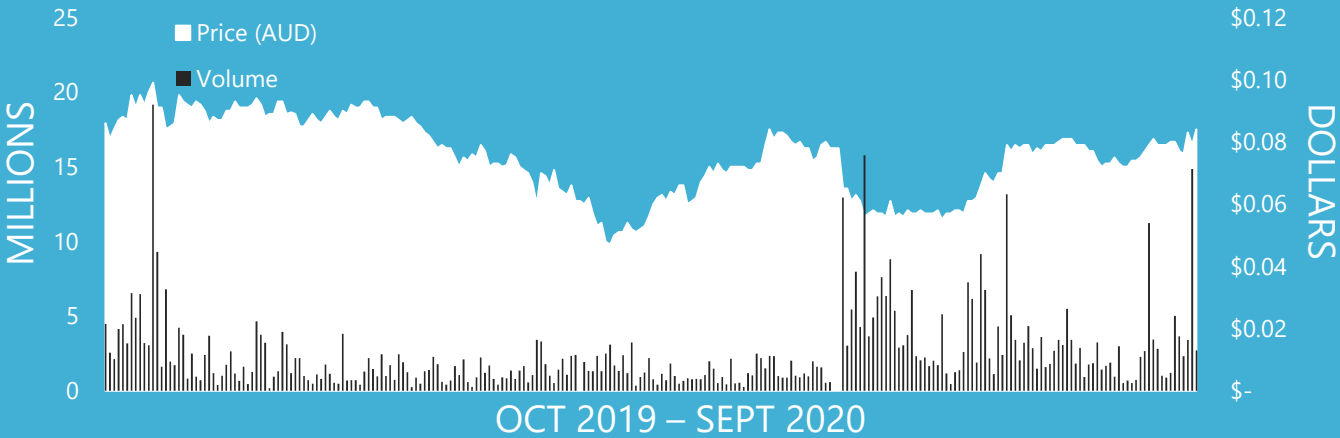
- JP Morgan Nominees Australia Pty Ltd
- ECE Nolans Investment Company
- Talaxis Ltd
- Citicorp Nominees Pty Ltd
- HSBC Custody Nominees (Australia) Ltd
- Other

- ✓ Nolans world class NdPr project – DFS completed February 2019
- ✓ NdPr is the key input for high performance NdFeB permanent magnets
- ✓ NdPr is a critical input for the manufacture of energy efficient electric motors
- ✓ NdPr central to many clean energy applications including EVs and wind turbines - Globally Strategic

Capital Structure	
ASX Code	ARU
ASX Share Price (6 October)	\$0.090
Shares on Issue	1,168m
Market Capitalisation*	\$89.92m
12 Month Liquidity	\$46.50m
Cash*	\$22.80m
Debt	Nil
Enterprise Value*	\$67.12m

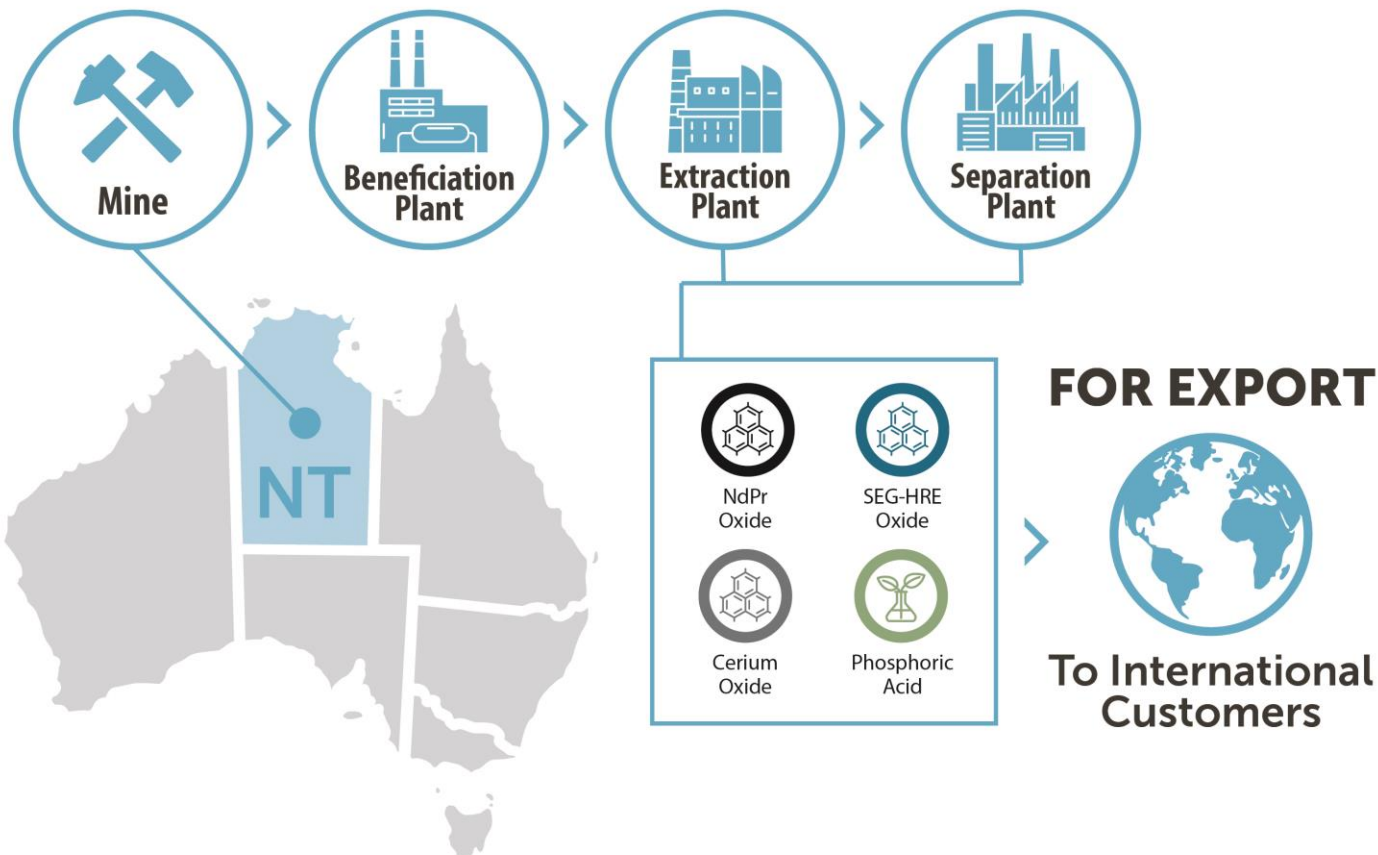
* Data based on 30 June 2020 Quarterly Report

12 Month Share Price Performance



Nolans NdPr Project

- ✓ Globally Strategic
- ✓ 100% Australian Domiciled



KEY FACTS



\$1 billion
cost to develop & build



\$200 million
annual cost to operate



minimum **39-year**
mine life



135 kilometres
from Alice Springs



construction
workforce of **620**

operational
workforce of **280**



5-10% of the world's
magnet rare earths supply

As announced on 16 March 2020

Nolans is "Shovel Ready"



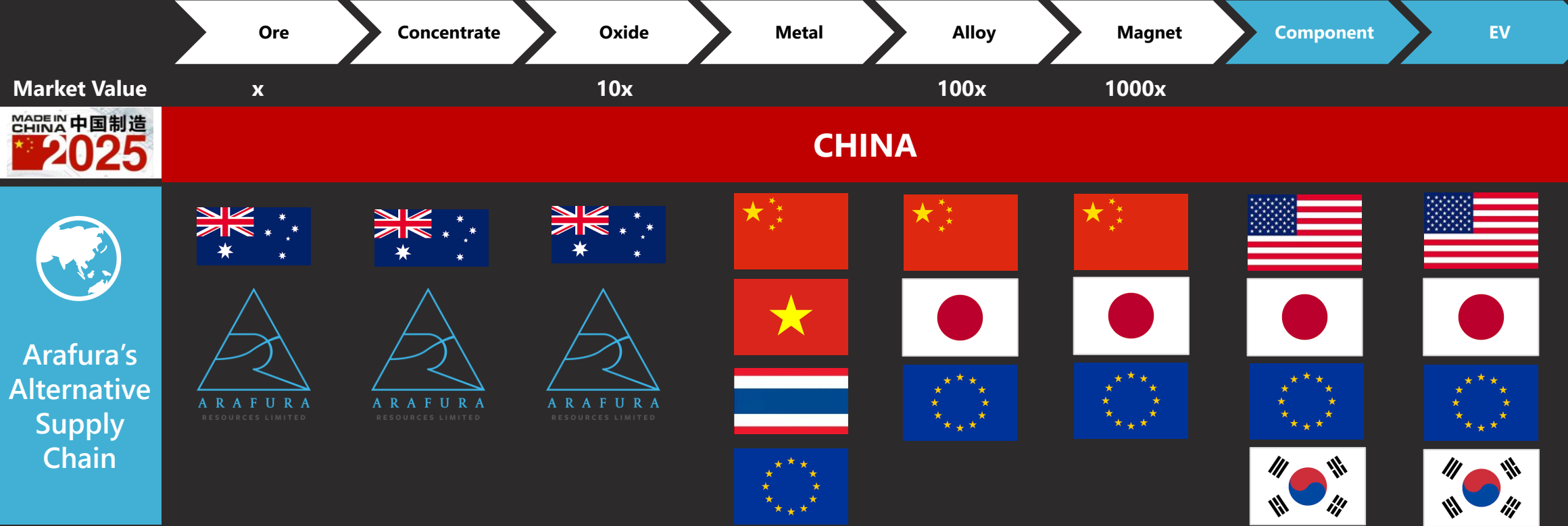
Pictured from left, Archie Glenn, Tony Scrutton and James Glenn signing the Native Title Agreement.

- 1 DFS completed 2019
- 2 Federal & NT environment approvals secured
- 3 Native Title Agreement executed
- 4 Mining Licence granted
- 5 Updated Ore Reserves & Life of Mine
- 6 Completion of Indigenous Engagement Strategy
- 7 Clough Worley joint venture for hydromet plant
- 8 Appointment of KBR/Wave as the IPMT for Nolans
- 9 Customer Verification of products
- 10 Key ongoing programs execution readiness, **Offtake and Project Funding**
- 11 **Nolans is shovel ready to meet global shortages.**

Critical Minerals Supply – a Global issue



Global Supply Chain



1

China currently exerts control over most of the global rare earth supply chain. Projects not producing Oxide risk falling into the Made in China 2025 supply chain.

2

Arafura plans to produce Oxide in Australia to provide **supply security that will meet sustainability objectives**.

3

Nolans offtake strategy focused on parties **not aligned with the Made in China 2025 strategy**.

4

Governments around the world are seeking to partner in opportunities to **diversify the supply chain to prevent disruption**.

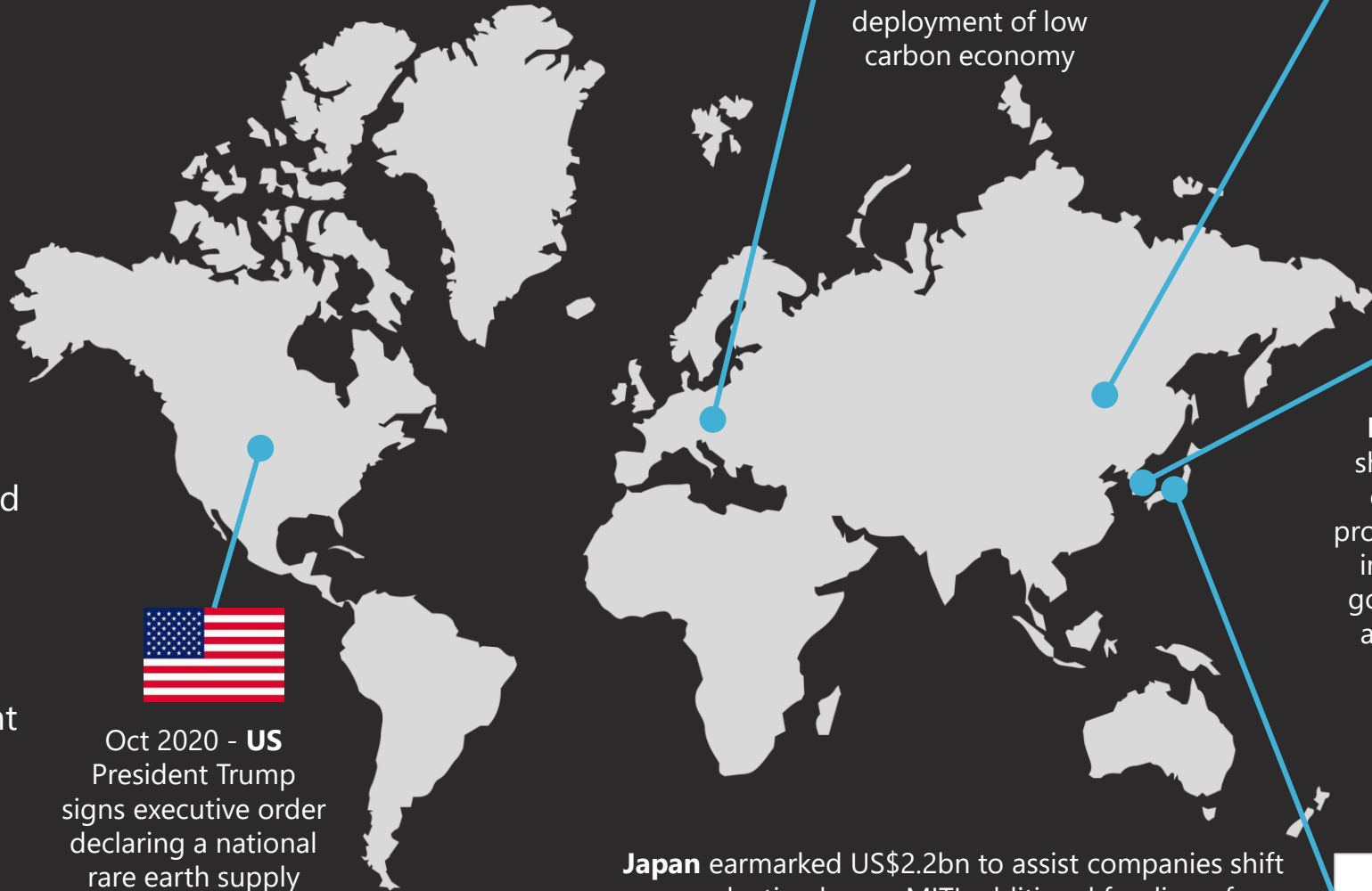


(ASX:ARU)

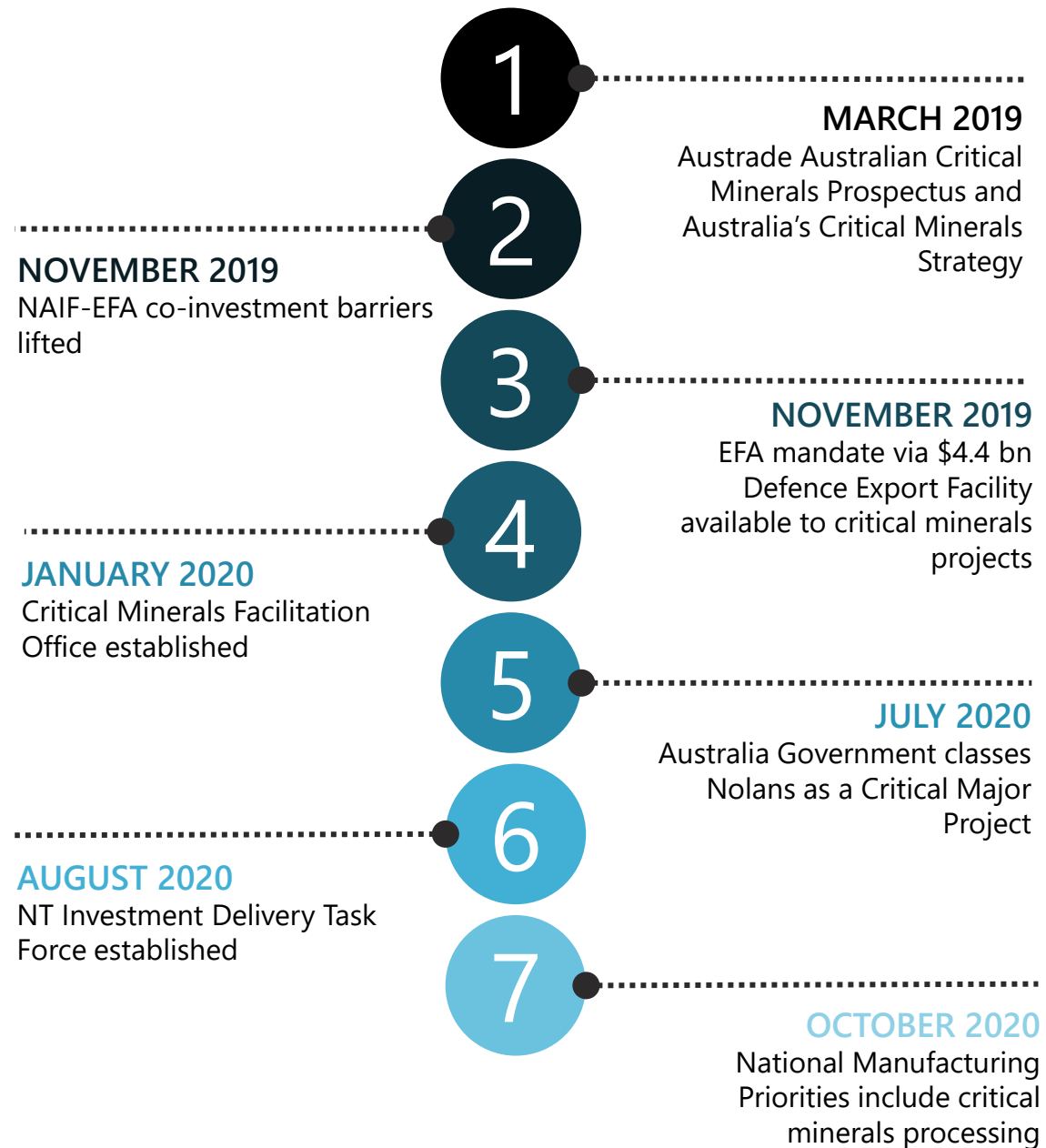
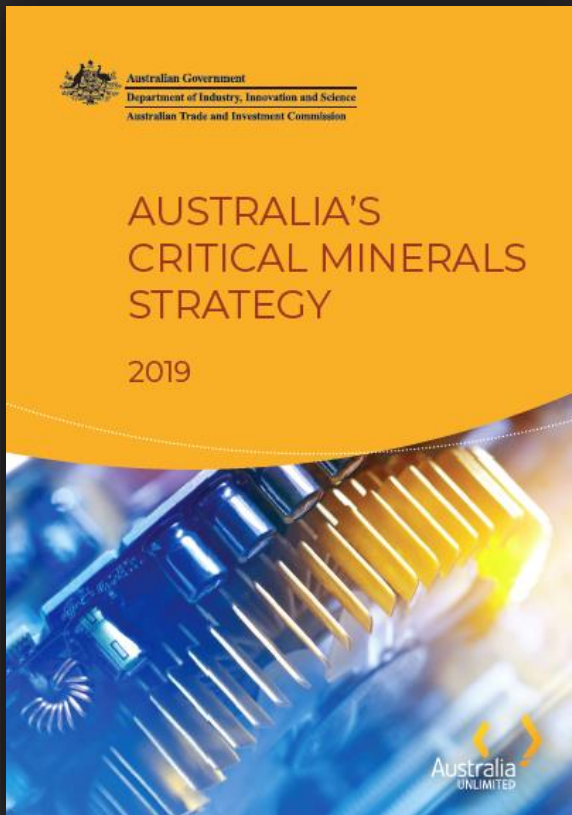
Rest of World's Critical Minerals Initiatives

Global supply chains planning to increase resilience

- ✓ Dual sourcing of materials
- ✓ Expanding supplier base
- ✓ Regionalizing supply chains
- ✓ Building stronger, reliable and transparent supply chains
- ✓ Widen scope of existing re-shoring plans
- ✓ Re-structuring of government policies



Australia's Critical Minerals Initiatives

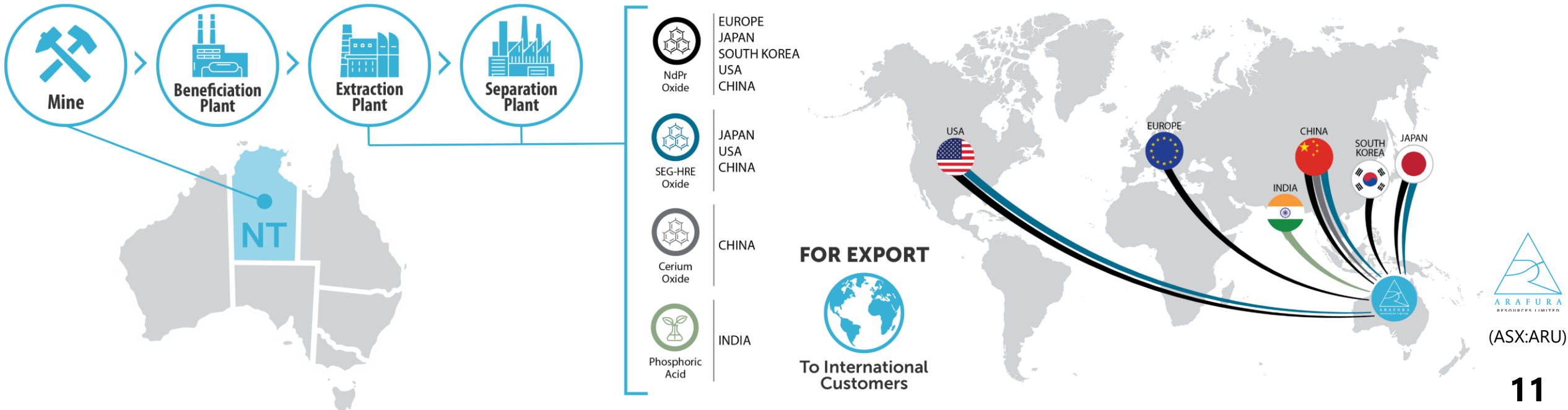


Nolans a Strategic Resource



Nolans aims to supply
5-10% of global demand for NdPr oxide

- ✓ Globally strategic and 100% Australian domiciled
- ✓ Sound project economics with 39-year mine life
- ✓ Ore to oxide at single site with approved waste management plan
- ✓ Phosphoric acid product places Nolans in a unique position to compete with China on cost
- ✓ Providing supply source certainty outside Made in China 2025 strategy



The Offtake Strategy

1

Customer engagement at varying levels (MoUs and term sheets) and targeted at NdPr users **not aligned** with *Made in China 2025* strategy

- **Japan** – NdFeB magnet manufacturers
- **Europe & Korea** – automotive component makers and OEMs, and wind turbine makers
- Appointment of European-based advisory firms to assist engagement.

2

Customer qualification of final rare earth oxide products completed and well within Total Rare Earth Oxide (TREO) specifications

3

Arafura has MOU for NdPr oxide tolling to metal conversion to meet customer needs

4

Offtake model aligned with Export Credit Agency (ECA) requirement to tie offtake to home jurisdiction. Project offtake closely linked to project funding.

Sales Distribution Targets

Region	Country	Customer	Target Market	NdPr (tpa)	Status
China	China	JingCi	NdFeB Magnet	700	MOU, drafting Offtake Agreement
	China	Baotou Tianhe	NdFeB Magnet	700	MOU
Total				1,400	
Rest of Asia	Korea		Trading & End User	350	Sale & Purchase framework discussion
	Japan		NdFeB Magnet	1,000	Offtake discussion, wants Japan exclusivity
Total				1,350	
Europe	Germany		Wind Turbine	400	Sale & Purchase framework discussion
	Germany		Automotive OEM	500	Offtake Terms Sheet circulated
	Germany		Automotive Component	150	Offtake Terms Sheet advanced
	France		Automotive Component	200	Offtake Terms Sheet advanced
	Germany		Automotive Component	250	Initial Supply Chain Engagement
Total	Germany		Automotive Component	minor	MOU & Offtake Terms Sheet discussion
Total				1,500	
Total Distribution Plan				4,240	
Average Annual Production				4,325	

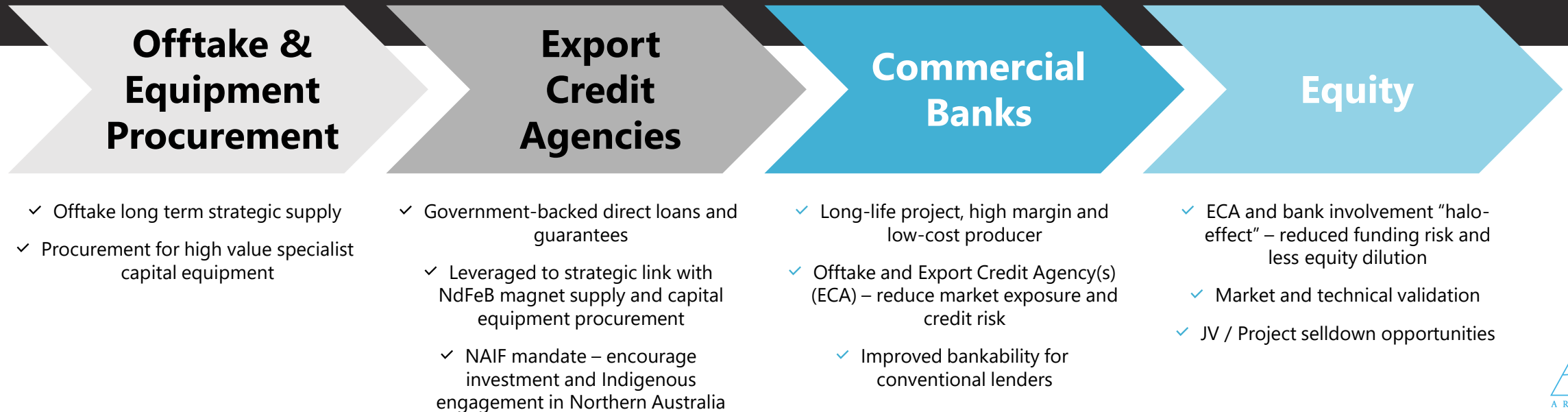
- ✓ Volumes allocated to China are currently with Tier 1 NdFeB magnet manufacturers with significant export markets
- ✓ This will likely reduce as offtake arrangements are refined with non-Chinese end users

Project Financing



Project Funding Strategy

- ✓ Arafura looking to secure US\$726m to meet CAPEX requirements for the Nolans project
- ✓ Potential sources of funding include equity, debt, JV and/or project selldown with a strategic investor
- ✓ DFS completion, environmental approval and ML grant are critical enablers for engagement with funding partners
- ✓ Critical mineral supply and NdPr supply diversification strategies are topical with industry, ECAs and governments
- ✓ Nolans a key critical minerals project identified for potential financing support through Australian Government's Export Finance Australia (EFA) and Northern Australia Infrastructure Facility (NAIF)



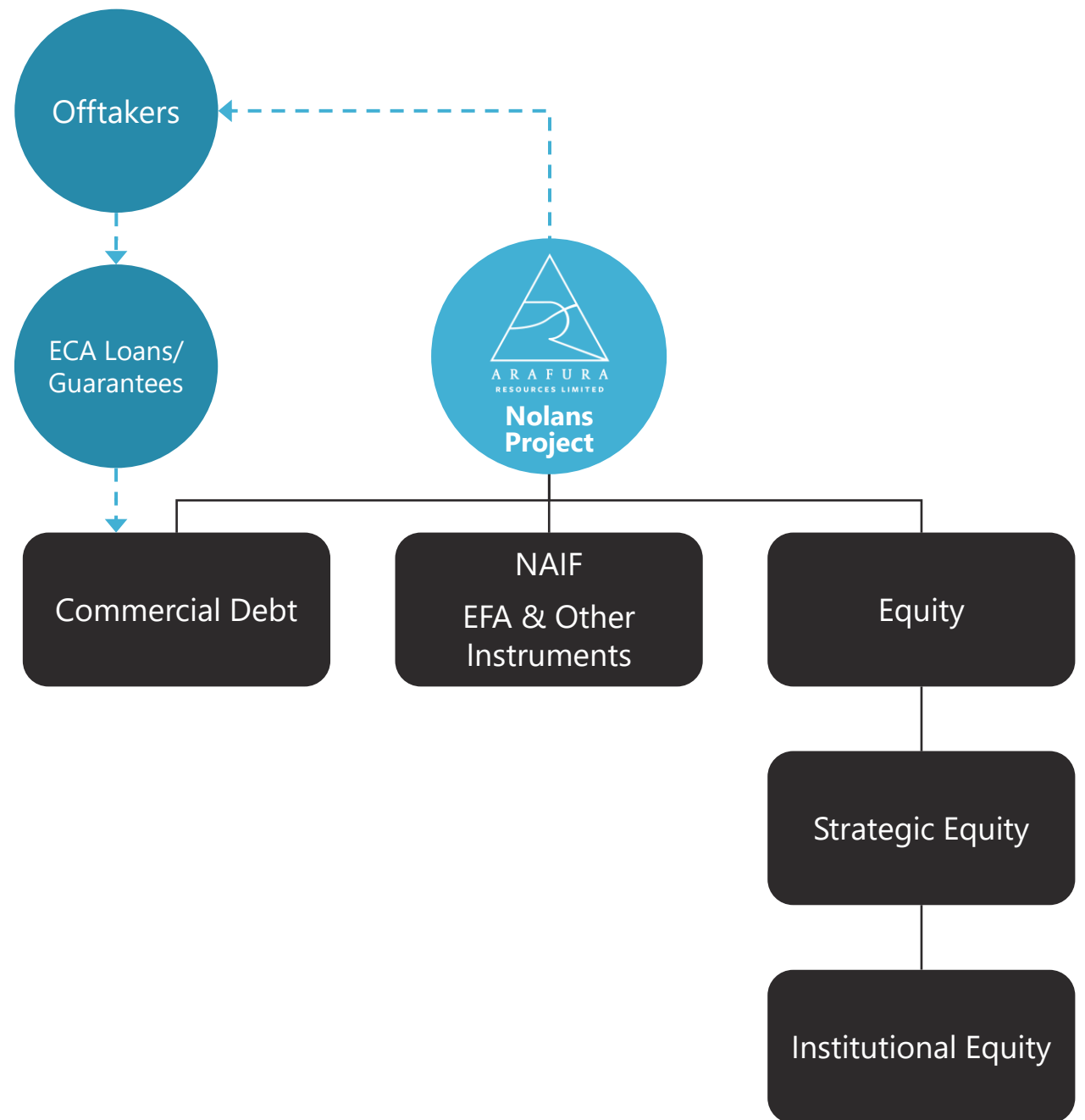
The ECA-led Funding Strategy



- ✓ Nolans is a strategic **Australia** based **NdPr** project
 - ✓ production aligned with forecast supply shortages in mid 2020s
 - ✓ Product wholly aligned with key ECA mandates of e-mobility and renewables
- ✓ Debt led funding structure, targeting ECA funding
 - ✓ ECAs are seeking well structured projects, critical raw materials (CRM) production and best-practice ESG standards
- ✓ **Debt process now “live” with advisory appointments**

Targeted Funding Structure

- ✓ ECA debt will be critical but not the entire funding solution
- ✓ Portfolio of funding sources
- ✓ Offtake, debt and strategic equity all interlinked and driving schedule



Current Focus



Current Focus



1

Prioritising project work streams against cash conservation priorities in light of COVID-19 and uncertain recovery of capital markets.

2

Provision of sample product & advancing terms sheets with end users for offtake.

3

Escalate engagement with financiers & financial advisors for project financing.

4

Continued dialogue with Australian & other governments seeking to establish non-Chinese critical minerals supply chains.

Indicative Production Timeline

- ✓ Targeting Front-End Engineering & Design (FEED) to be fully funded prior to commencement
- ✓ Timeline subject to change due to impact by COVID-19 on funding and offtake activities

Works Activity	Execution Readiness					Early Contractor Involvement						Enabling Works Construction						Construction															Production								
	Months Duration from Project Commitment Date																																								
	-4	-3	-2	-1	0	1	2	3	4	5	6	7	8	9	10	11	12	13	14	15	16	17	18	19	20	21	22	23	24	25	26	27	28	29	30	31	32	33	34	35	
Project Commitment																																									
Production Commitment																																									
First Production																																									
EXECUTION & OPERATIONAL READINESS																																									
FEED & ENGINEERING DEVELOPMENT																																									
PROCUREMENT & CONSTRUCTION																																									
COMMISSIONING & RAMP-UP																																									



Contact Information



Level 6, 432 Murray St
Perth WA 6000 Australia



+61 8 6370 2800



arafura@arultd.com



www.arultd.com

Appendices



Experienced Board



MARK SOUTHEY
CHAIRMAN

Mark Southey has previously held senior executive positions with Honeywell and ABB both in Australia and internationally, and more recently was part of the global executive leadership team within WorleyParsons, where he held the position of Group Managing Director for the Minerals, Metals and Chemicals Sector. He is Chair of Arafura Resources' Remuneration and Nomination Committee and is a member of the Audit and Risk Committee.



CHRIS TONKIN
NON-EXECUTIVE DIRECTOR

Chris Tonkin has over 35 years' experience as a senior business executive with a broad industry background in business generation, management, and strategy development. He is a member of Arafura Resources' Remuneration and Nomination and is the Chair of the Audit and Risk Committee.



QUANSHENG ZHANG
NON-EXECUTIVE DIRECTOR

Quansheng Zhang holds a Doctoral degree in Engineering and a Masters degree in Geophysical Prospecting. He is based in Nanjing in the Peoples Republic of China and is the General Manager of Hong Kong East China Non-Ferrous Mineral Resources Co Ltd (HKECE). Quansheng has over 30 years of mineral prospecting and exploration experience, and expertise in mineral resource surveys and geophysics.



CATHY MOISES
NON-EXECUTIVE DIRECTOR

Cathy Moises has extensive resource sector experience having worked for several major stockbroking firms including McIntosh (now Merrill Lynch), County Securities (now Citigroup) and Evans and Partners. More recently, she was Head of Research at Patersons Securities. Cathy holds a Bachelor of Science with Honours in Geology from the University of Melbourne and a Diploma of Finance and Investment from the Securities Institute of Australia. She is a member of Arafura's Remuneration and Nomination and Audit and Risk Committees.



GAVIN LOCKYER
MANAGING DIRECTOR

Gavin Lockyer's diverse, global experience has provided management and leadership opportunities in a range of disciplines including; Accounting, Financial & Investment Banking, Major Resource Development & Operations, and Global Bank Treasuries. Over the past 20 years his career has exposed him to business practices in North America, Europe, and Australasia.

Experienced Management



RICHARD BRESCIANINI
GENERAL MANAGER
EXPLORATION & BUSINESS
DEVELOPMENT

Richard has over 30 years' experience in the minerals industry. He worked with BHP Minerals on base and precious metals exploration programs throughout Australasia and North America, contributing to significant economic discoveries at Eloise (copper-gold) and Cannington (silver-lead-zinc). Thereafter he led the Northern Territory Government's Geological Survey as its Director from 2003 to 2007 before joining Arafura.



PETER SHERRINGTON
CHIEF FINANCIAL OFFICER &
COMPANY SECRETARY

Peter commenced employment with Arafura in 2008 as Commercial Manager and was appointed Chief Financial Officer in July 2013. He has more than 20 years' experience in professional and corporate roles in Perth. Prior to working with Arafura, he held senior finance and commercial positions with several ASX and public unlisted entities. He has also worked in public practice for 10 years in the areas of business services and corporate advisory.



LLOYD KAISER
GENERAL MANAGER
SALES & MARKETING

Lloyd has more than 10 years' experience in the sales and marketing of industrial minerals into high value sector markets including the nuclear, automotive, and advanced ceramics sectors. Prior to joining Arafura, he held several senior positions in account management, business development and marketing across a diverse range of commodities and chemicals including alumina, coal, industrial minerals, refractories, and ceramics.



BRIAN FOWLER
GENERAL MANAGER
NT & SUSTAINABILITY

Brian has worked for over 40 years in private sector mineral companies developing a range of commodities, including rare earths, base metals, and gold. Brian is a member of the Northern Territory Mining Board, Management Board of the Northern Territory Minerals Council of Australia, and a member of Work Health & Safety Advisory Council of the Northern Territory.



STEWART WATKINS
GENERAL MANAGER
PROJECTS

Stewart has 25 years' experience in many facets of the mining industry including operations, engineering consulting, project development and management. Stewart is a Fellow of the AusIMM. This has included a wide range of roles including corporate and business management, business development, project/study management, process design, commissioning and process plant operation.

Long Life Asset

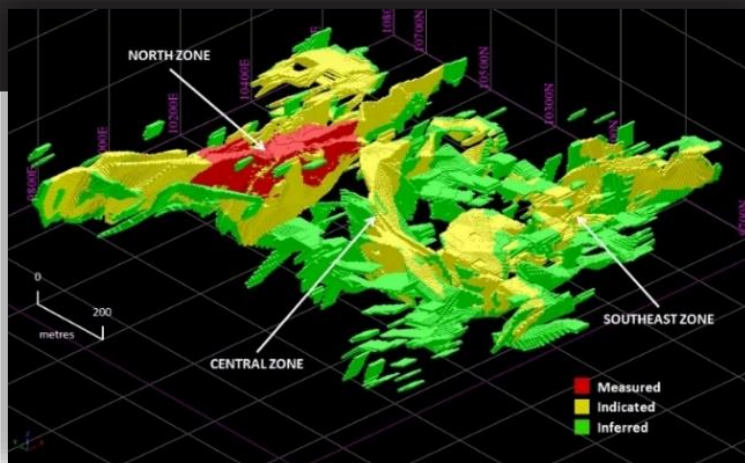
RESOURCES	TONNES (m)	RARE EARTHS TREO %	PHOSPHATE P ₂ O ₅ %	NdPr ENRICHMENT %
Measured	4.9	3.2	13	26.1
Indicated	30	2.7	12	26.4
Inferred	21	2.3	10	26.5
TOTAL	56	2.6	11	26.4

As announced on 7 June 2017. 1% TREO cut-off grade. Numbers may not compute exactly due to rounding. "NdPr enrichment" is the proportion of TREO comprising Nd₂O₃ and Pr₆O₁₁.

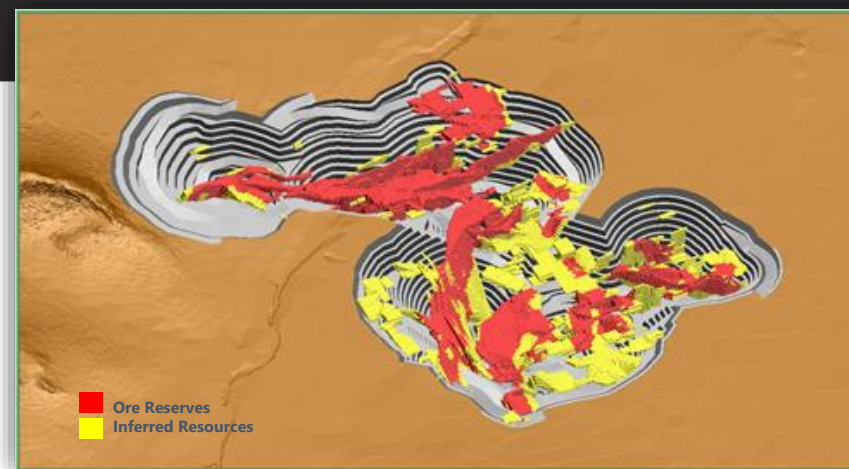
RESERVES	TONNES (m)	RARE EARTHS TREO %	PHOSPHATE P ₂ O ₅ %	NdPr ENRICHMENT %
Proved	5.0	3.0	13	26.2
Probable	24.6	2.8	13	26.5
TOTAL	29.5	2.9	13	26.4

As announced on 16 March 2020. Numbers may not compute exactly due to rounding. "NdPr enrichment" is the proportion of TREO comprising Nd₂O₃ and Pr₆O₁₁.

Mineral Resources



Ore Reserves



Robust Economics

	Ore Reserves	Mining Inventory
Mining & Processing		
Project Life (years)	33	39
Production		
NdPr Oxide (tpa)	3,923	4,325
Financial		
Capital Cost (A\$m)	1,003	1,026
KPI Analysis		
Operating Cost (US\$/kg NdPr with Phosphoric Acid credit)	\$27.02	\$23.71
NPV10 after tax (A\$m)	782	968
IRR after tax (%)	17.29%	17.97%
After tax payback	Year 5	Year 5

As announced on 16 March 2020. Average production and costs are calculated as the arithmetic annual average following the anticipated three year ramp up and excluding the partial final year of production.

- ✓ DFS in 2019 and Ore Reserves updated 2020
- ✓ Capital cost **A\$1006m**
- ✓ Low cost producer at **US\$23.71/kg NdPr** (current price US\$47.8/kg)
- ✓ **39-year** mining inventory with expansion potential
- ✓ Only Australian NdPr-focused project that is **shovel ready**