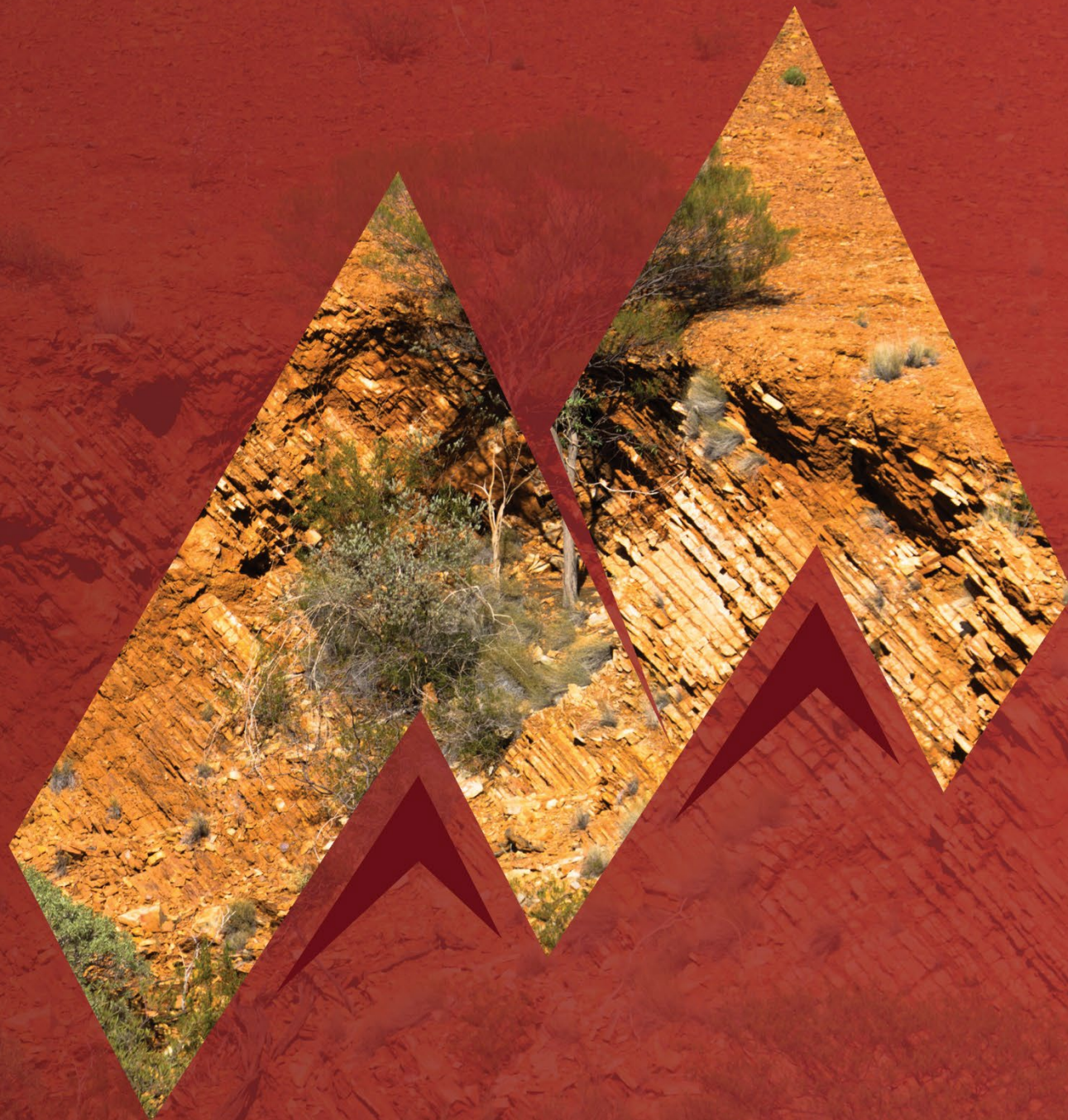




**BELLAVISTA
RESOURCES**

Targeting Future Facing Minerals

**RIU EXPLORERS
CONFERENCE
FEBRUARY 2024**



Cautionary Statements

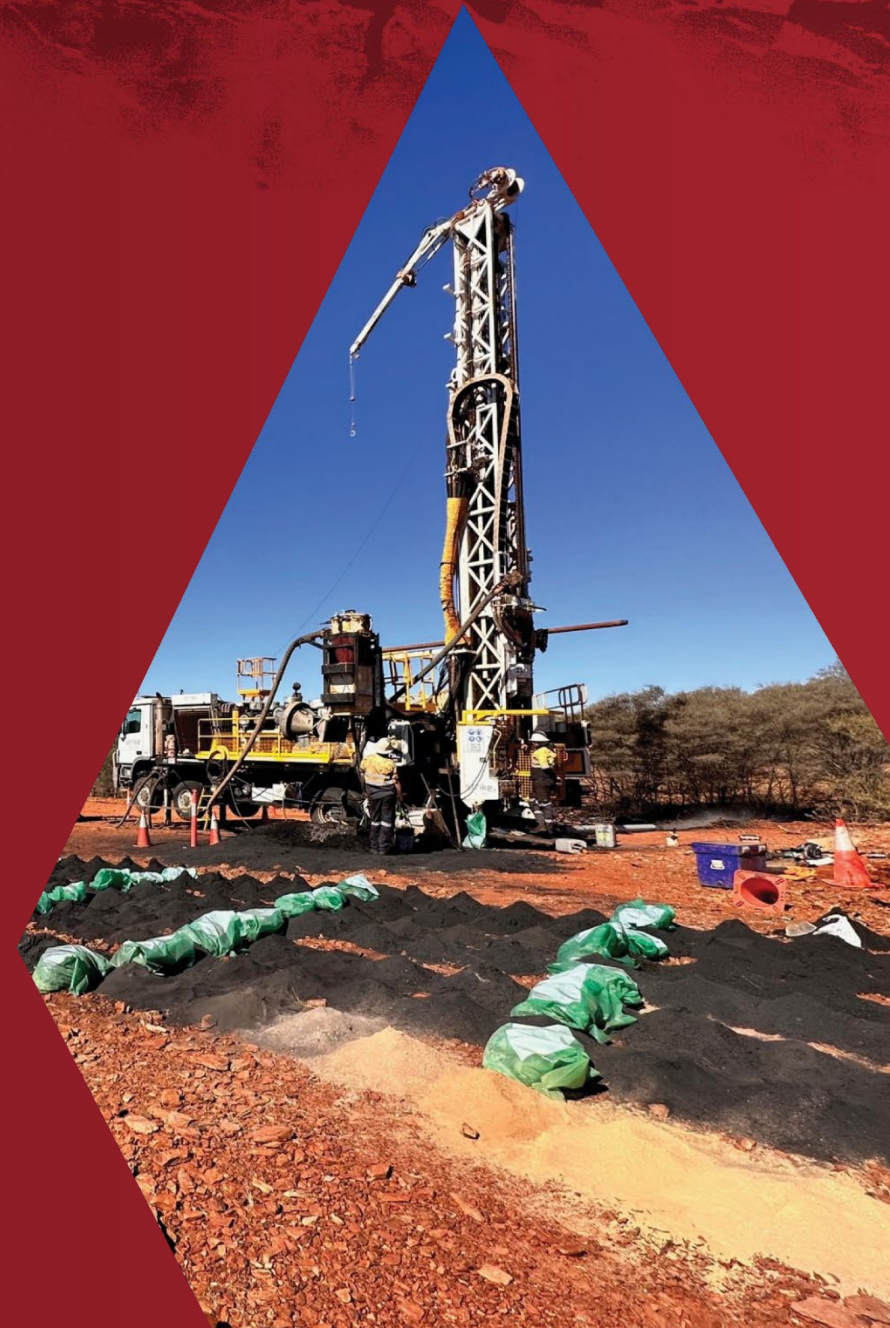
The information contained in this presentation has been prepared by Bellavista Resources Limited ("Bellavista").

Not an offer: This presentation is not an offer, invitation, solicitation or other recommendation with respect to the subscription for, purchase or sale of any securities in Bellavista. This presentation has been made available for information purposes only and does not constitute a prospectus, short form prospectus, profile statement or offer information statement. This presentation is not subject to the disclosure requirements affecting disclosure documents under Chapter 6D of the Corporations Act 2001 (Cth).

Forward Looking Statements: This presentation may contain certain forward-looking statements and projections regarding estimated, resources and reserves; planned production and operating costs profiles; planned capital requirements; and planned strategies and corporate objectives. Such forward-looking statements/projections are estimates for discussion purposes only and should not be relied upon. They are not guarantees of future performance and involve known and unknown risks, uncertainties and other factors many of which are beyond the control of Bellavista. The forward-looking statements/projections are inherently uncertain and may therefore differ materially from results ultimately achieved. Bellavista does not make any representations and provides no warranties concerning the accuracy of the projections and disclaims any obligation to update or revise any forward-looking statements/projects based on new information, future events or otherwise except to the extent required by applicable laws.

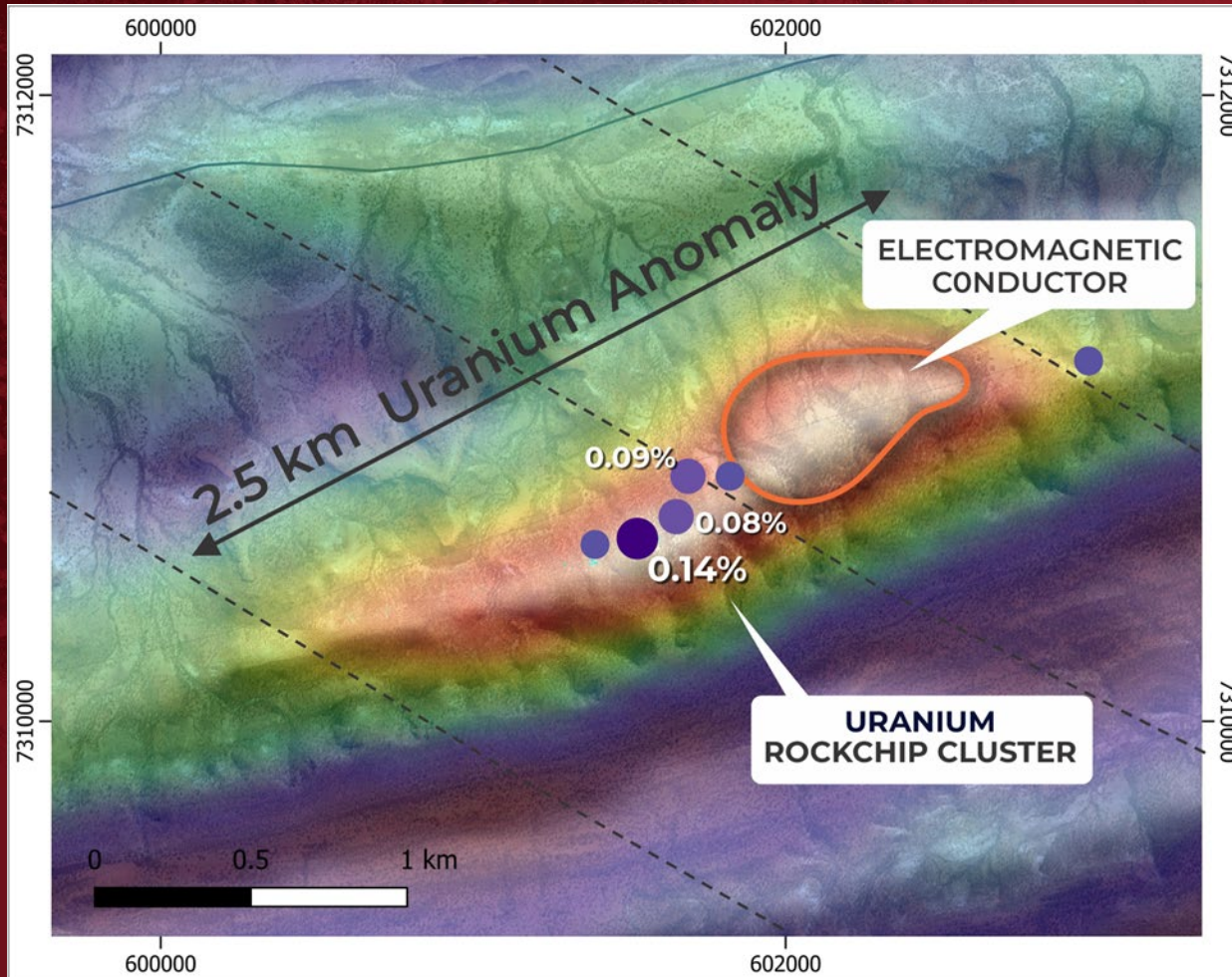
While the information contained in this report has been prepared in good faith, neither Bellavista or any of its directors, officers, agents, employees or advisors give any representation or warranty, express or implied, as to the fairness, accuracy, completeness or correctness of the information, opinions and conclusions contained in this presentation. Accordingly, to the maximum extent permitted by law, none of Bellavista directors, employees or agents, advisers, nor any other person accepts any liability whether direct or indirect, express or limited, contractual, tortious, statutory or otherwise, in respect of, the accuracy or completeness of the information or for any of the opinions contained in this presentation or for any errors, omissions or misstatements or for any loss, howsoever arising, from the use of this presentation.

No new information: Certain Exploration Results referred to in this presentation were first reported in accordance with ASX Listing Rule 5.7 in the Company's Prospectus (released to the ASX on 23 May 2022) and ASX announcements dated 31/05/2022, 07/06/2022, 28/06/2022, 18/07/2022, 28/07/2022, 09/08/2022, 08/09/2022, 20/10/2022, 3/11/2022, 12/12/2022, 16/2/2023, 8/3/2023, 18/10/2023, 12/12/2023 and 8/02/2024. Bellavista confirms that it is not aware of any new information or data that materially affects the information included in the original announcements. The Company confirms that the form and context in which the Competent Persons' findings are presented have not been materially modified from the original market announcements.





KIANGI URANIUM TARGET



THE URANIUM TARGET HORIZON

- The 2.5km strike U-channel Radiometric Anomaly
- Coincident EM conductivity potentially points to a large, buried conductor
- Historic samples have globally significant* uranium concentrations (up to 0.14% U_3O_8)¹ *Present ave. mined uranium grade - 400ppm U_3O_8 .
- Base metals and elevated path finder elements akin to the world-class Olympic Dam deposit

Bellavista deployed its technical team last week to conduct heli-supported mapping and surface sampling

FEBRUARY FIELD VISIT

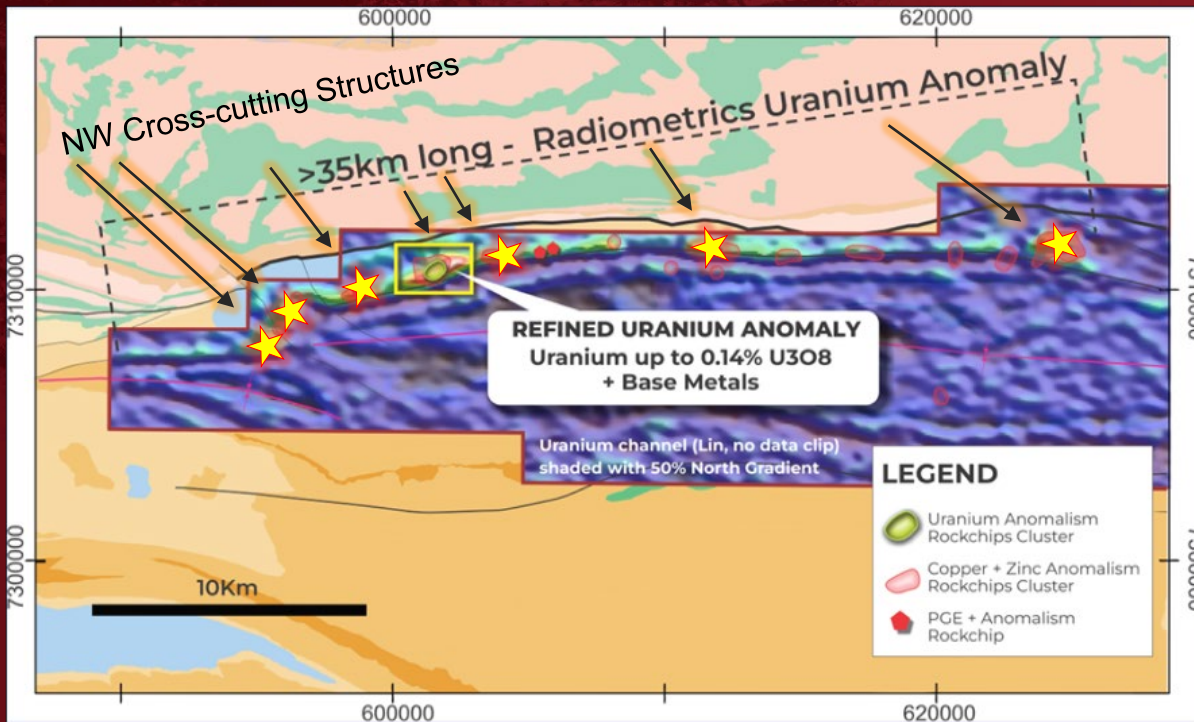
- MAPPING AND SAMPLING COMPLETED ACROSS ENTIRE 2.5KM ANOMALY
- APPROX 50 SURFACE SAMPLES COLLECTED AND SUBMITTED FOR LABORATORY ANALYSIS
- RESULTS EXPECTED 4-6 WEEKS



KIANGI URANIUM TARGET

URANIUM TARGET HORIZON

- Multiple targets along 35km strike – coincide with Cross-cutting NW Structures



- Modelled Intrusive bodies nearby
- Deep tapping regional structures
- Reduced sulphur and carbon-rich sediments
- Uranium coincident with Zn, Cu, Ag, Mo, V, P, Mn
- Buried IOCG or Intrusion related (Skarn)





A Strategic Opportunity

➤ Upper Gascoyne/Capricorn Orogen - Emerging Battery and Base Metal District

➤ Broad range of metals present:

- Best Assays include: , 3.3% Copper,¹ 56g/t Silver,² 5.8% Zinc,¹ 0.14% Uranium Oxide,² 1.66% Vanadium pentoxide,³ 2.1% Nickel,¹ 654ppm Molybdenum³ and 161ppm Gallium¹

➤ Remarkable Geological setting:

- **Basin Deposits – same age as Mt Isa District (~1.6Ga)**
e.g. Century, Mt Isa
- **Granitoids same age as Olympic Cu-Au Province intrusions (~1.59 Ga)**
e.g. Olympic Dam IOCG(U)
- **Mafic sills/dykes age range from Fraser Province (~1.3Ga) to Musgrave Province (~1.07Ga)**
e.g. Nova-Bollinger (Fraser Range) and Nebo-Babel (Musgrave Province)
- **Major crustal-scale faults and lineaments** reactivated multiple times
e.g. Tangadee Lineament

“When looking for Elephants you must look in Elephant Country”



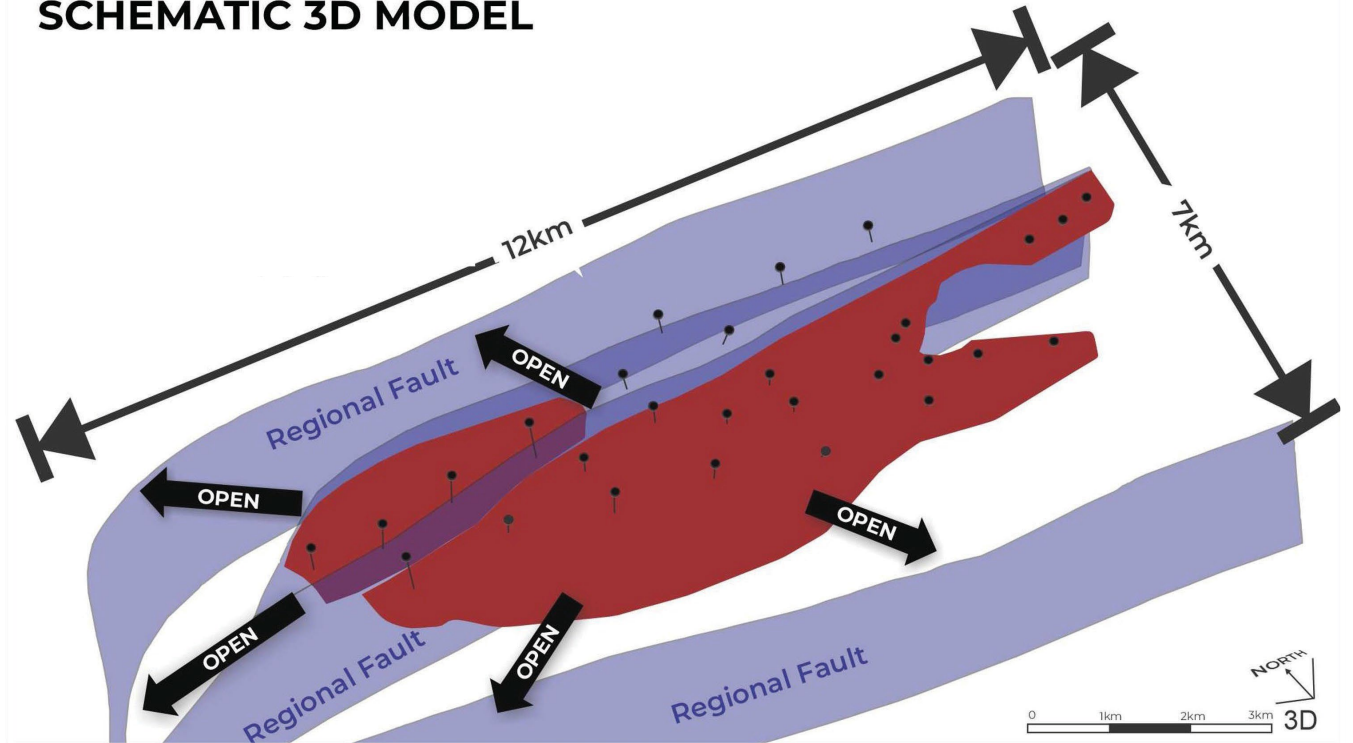


Extensive Mineralisation

BRUMBY DEPOSIT

- A potential world-class scaled hyper-enriched black shales (HEBS) deposit
 - “Seam-like” in nature
 - Shallow-dipping gently folded geometry
 - Continuous and consistent 20-30m thick horizon over at least 30 km² area
 - Open in all directions
 - Significant grade up-lift in sub-metre intervals
- Reporting to the HEBS Horizon:
 - Zinc
 - Vanadium
 - Copper
 - Silver
 - Molybdenum
 - Nickel
 - Gallium
 - Au Pd Sb Se As Re Te Tl -(P, Y)

SCHEMATIC 3D MODEL





Global Significance

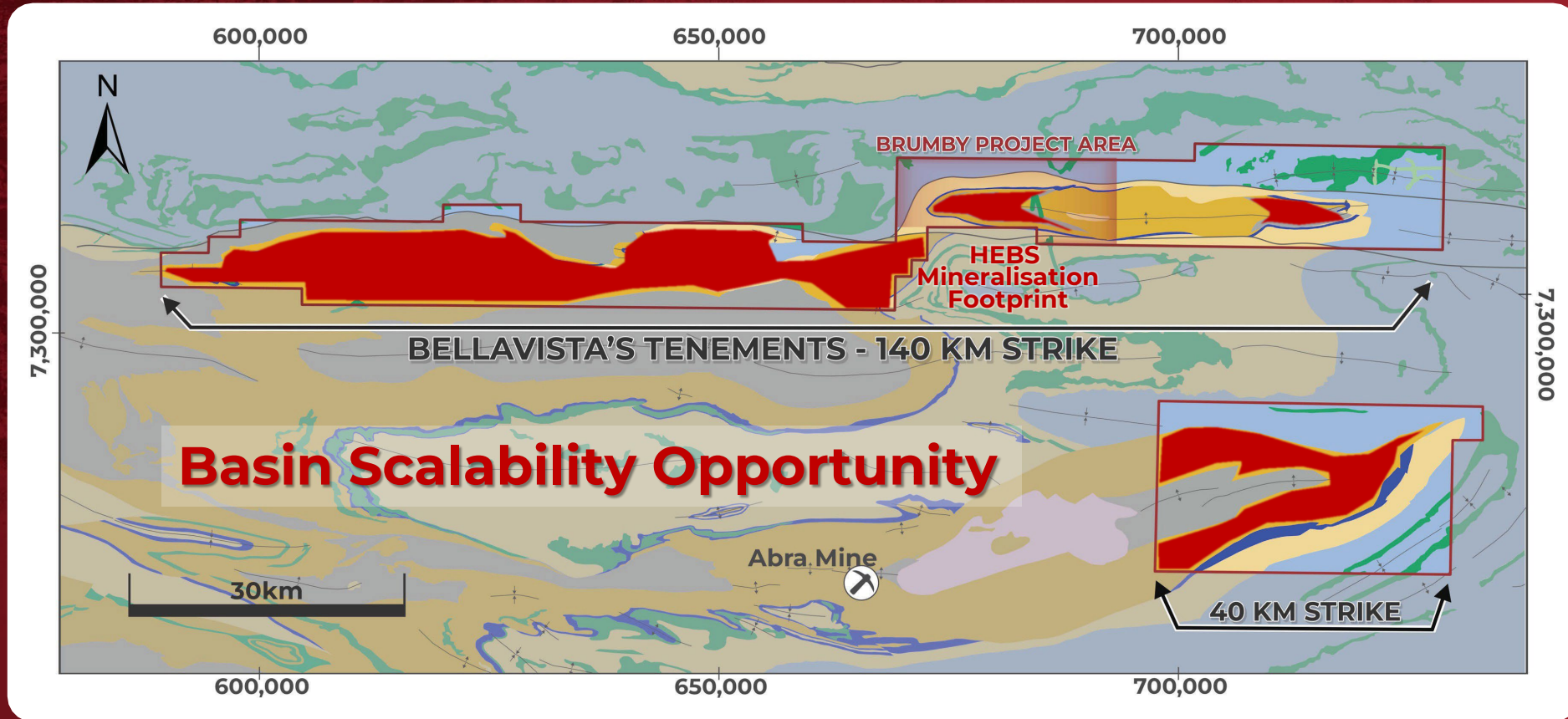
- Groundbreaking Discovery for Western Australia.
 - Introduction of HEBS (Hyper-Enriched Black Shale) deposit style.
- Comparable to globally significant deposits.
 - Talvivaara – 1.6Bt HEBS Mine Finland
 - Kupferschiefer
 - Kongo Basin
 - Alum Shales



Major black shale districts (brown areas) and a selection of significant deposits across the world.
Compiled after (Convey and Pašava, 2004) and (Large, 2012).

Bellavista Tenure

A Strategic Opportunity



► Strategic Basin-wide holding in the Edmund Basin

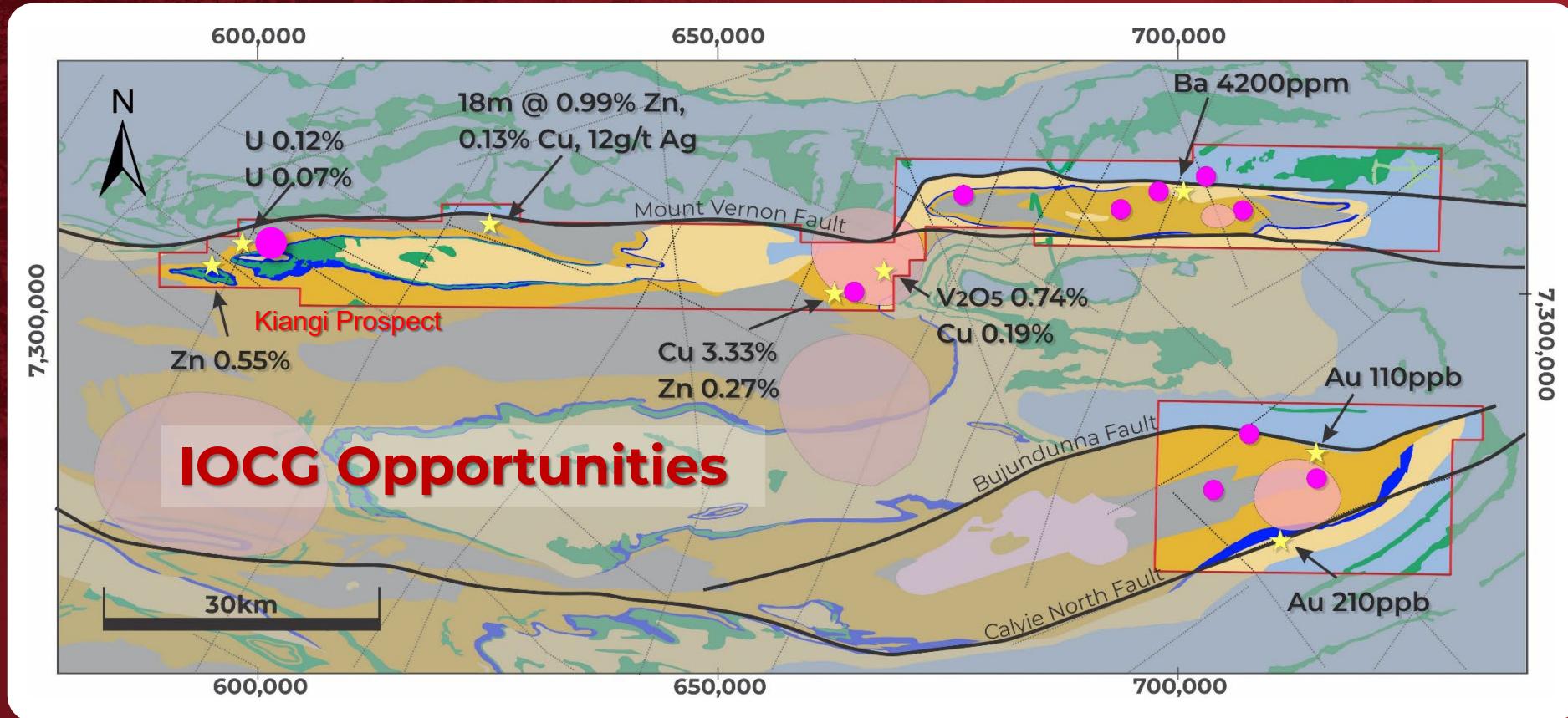
► Total Tenement Area - 1,867km²

► Substantial Growth and Regional Scalability Opportunities

- Same stratigraphy, under similar structural settings to Brumby within 140km of Strike.

Bellavista Tenure

A Strategic Opportunity



➤ Strategic Basin-wide holding in the Edmund Basin

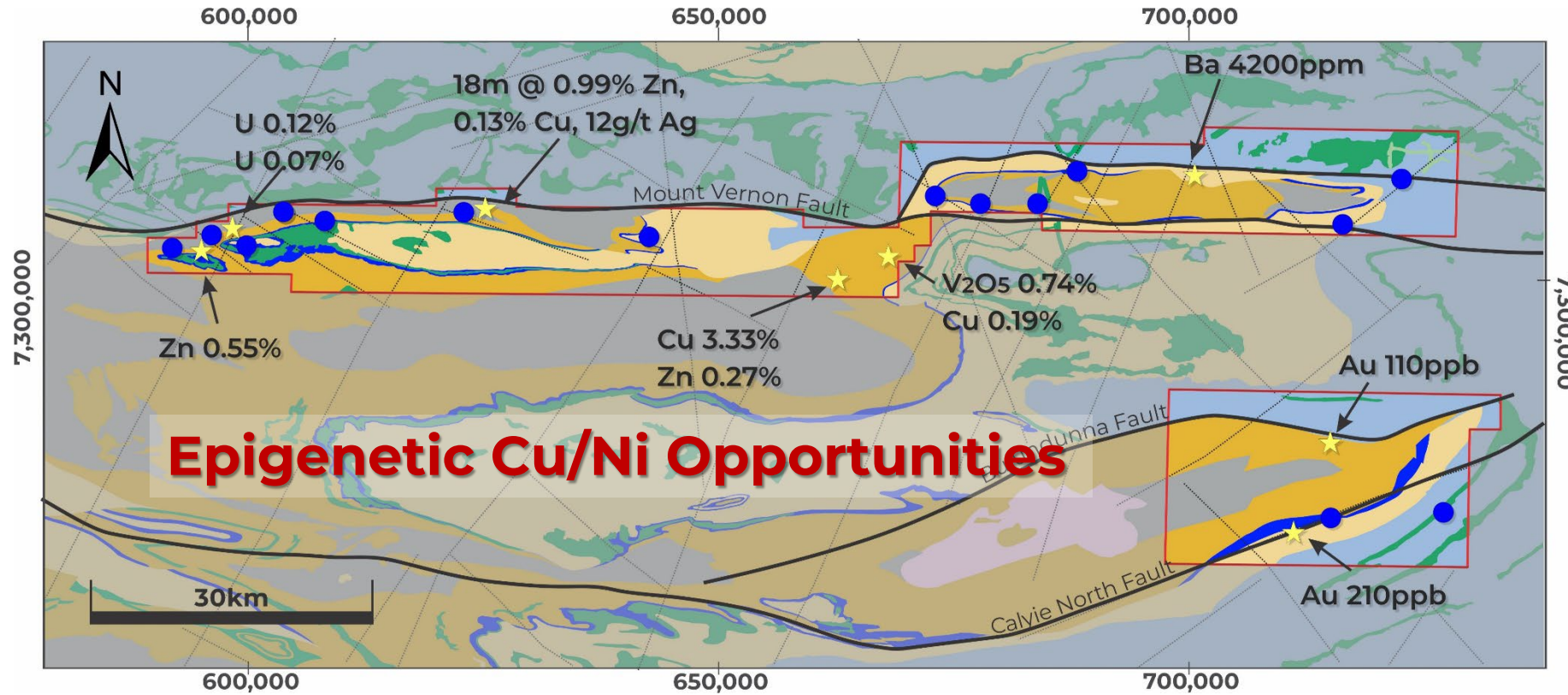
➤ Total Tenement Area - 1,867km²

➤ Substantial Growth and Regional Scalability Opportunities

- Same stratigraphy, under similar structural settings to Brumby within 140km of Strike.

Bellavista Tenure

A Strategic Opportunity



➤ Strategic Basin-wide holding in the Edmund Basin

➤ Total Tenement Area - 1,867km²

➤ Substantial Growth and Regional Scalability Opportunities

- Same stratigraphy, under similar structural settings to Brumby within 140km of Strike.

Corporate Summary

Shareholder base backed by successful corporate, exploration and mining teams

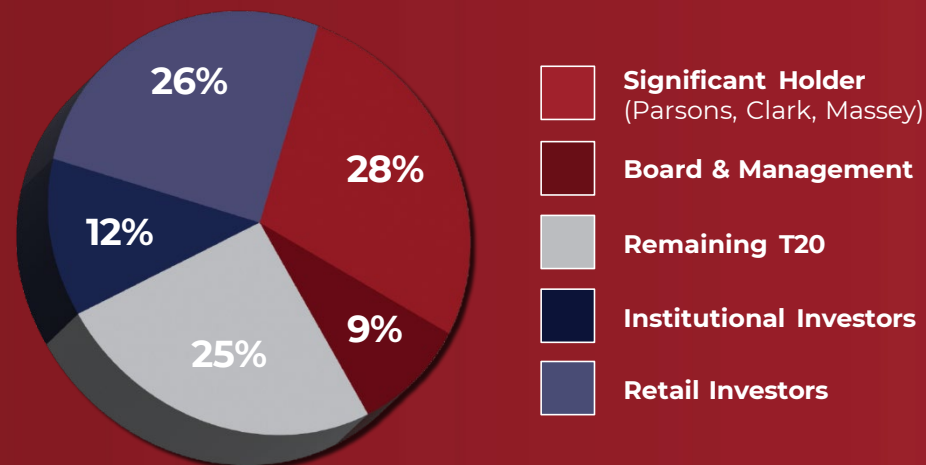
Capital Structure

ASX Code	BVR
Listed	25 May 2022
Price of Shares @ 9 Feb 2024	\$0.10
Share Price range since listing	\$0.095-\$0.40
Cash at January 2024	\$1.5M
Shares on issue	76,996,572
Market Capitalisation (at \$0.10 per share)	\$7.7M
Enterprise Value (at \$0.10 per share)	\$6.2M

Shareholder Summary

Steve Parsons	12.1%
Mark Clark	10.2%
Michael Naylor	6.6%
Kim Massey	5.8%
Top 20 Shareholders	55%

Our Share Registry



Management Team with an Exceptional Track Record



Mel Ashton
Non-Executive Chairman



Michael Wilson
Executive Director



Steven Zaninovich
Non-Executive Director



Michael Naylor
Non-Executive Director



Steve Parsons
Corporate Consultant



Carl Travaglini
Chief Financial Officer



Maddison Cramer
Joint Company Secretary



Nicolle Fleming
Joint Company Secretary



Natalia Brunacci
Exploration Manager

Leadership roles: **Bellevue Gold Limited, Firefly Minerals Limited, Midas Minerals Limited**, Gryphon Minerals, Canyon Resources Ltd, Centaurus Metals, Cullen Wines (Australia) Pty Ltd., Empire Ltd, Fremantle Football Club Ltd, Helix Resources Ltd, Indiana Resources, Lycopodium Minerals, Mako Gold Ltd, Maximus Resources Limited, Orway Minerals Consultants., Resource Development Group Ltd, Sarama Resources Ltd, etc.

**View the team's
extended biographies**



Company Snapshot

- ✓ **Backed by some of WA's most successful mining professionals**
Significant shareholders including Steve Parsons (ASX:BGL) and Mark Clark (ASX:CMM).
- ✓ **Leveraged against commodity cycles with prospectivity for multiple minerals and deposit styles**
- ✓ **Project with the potential to deliver world-class scaled deposits**
Brumby makes up only **6%** of the Bellavista's broader Edmund Basin tenure
- ✓ **Well-positioned in a Tier 1 Province with very little prior exploration**
Right age, geology and setting to host Giant to Super-Giant stratabound base metal and battery mineral deposits, Buried IOCG's and mafic/ultramafic related mineralisation
- ✓ **Discussions underway for funding and development opportunities**
- ✓ **Board & Management with a track record of making discoveries and delivering value back to shareholders**
Strong team focused on returning significant shareholder value over time
- ✓ **Aggressive and innovative explorers** – Use good science to create value, **always seeking new project opportunities** that can deliver value to our shareholders





**BELLAVISTA
RESOURCES**

www.bellavistaresources.com

Registered Office:

Level 2, 8 Richardson Street, West Perth WA 6005

PO Box 571, West Perth 6872

Email: **info@bellavistaresources.com** | Phone: **+61 (8) 6383 7556**

RIU Booth #37