



An emerging silver company with growing resources
in the Santa Cruz province of Argentina

NOOSA MINING CONFERENCE

Investor Presentation
November 2023

Unico Silver
ASX:USL

Forward looking statements and disclosures

Disclaimer

The following material is for general information purposes only and is not to be relied upon for the making of an investment decision. Any investment in Unico Silver Limited ACN 116 865 546 (USL) is subject to investment risk including the possibility of loss of capital invested and no return of income or payment of dividends. Neither USL nor any other entity or person in or associated with the USL group of companies guarantees any return (whether capital or income) or generally the performance of USL or the price at which its securities may trade.

In particular, this presentation is not a recommendation, offer or invitation to subscribe for or purchase USL securities. It is not for general distribution or third party reliance or use. While it has been prepared from sources USL believe to be reliable, USL cannot guarantee its accuracy or completeness and undertakes no obligation to advise of changes or updates to any such materials.

These materials are not exhaustive of all of the information a potential investor or their professional adviser would require. Nor do these materials take into account any specific objectives, financial situation or needs of investors. In addition, the past performance of USL cannot be assumed as indicative of the future performance of the company. For these and other reasons, before making any investment decision regarding USL securities you are strongly recommended to obtain your own up to date independent legal, financial and investment advice – those acting without such advice do so at their own risk.

Where this presentation does contain any forward looking statements, those statements are only made as the date of the presentation and are to be considered “at-risk statements” not to be relied upon as they are subject to further research and to known and unknown risks, uncertainties and other factors that may lead to actual results differing from any forward looking statement. This is particularly the case with companies such as USL which operate in the mining industry.

Competent Person Statement

This presentation contains information extracted from previous ASX releases which are referenced in the report. The Company is not aware of any new information or data that materially affects the information included in the original market announcements. The Company confirms that the form and content in which the Competent Person’s findings are presented have not been materially modified from the original market announcements.

- 18 May 2023, *Cerro Leon silver resource grows 84% to 92 million oz*
- 25 November 2022, *Transformative 100% Acquisition of advanced Pingüino silver gold project*
- 27 June 2022, *New targets emerge at Conserrat*
- 20 June 2022, *Drilling expands mineralisation at Malvina and Andrea Sur*
- 4 February 2022, *Bonanza silver at Malvina: 14m at 8.7gpt Au, 2541gpt Ag*
- 25 January 2022, *December 2021 Quarterly Report*
- 16 December 2021, *Malvina Sur drilling confirms new mineralised corridor*
- 22 November 2021, *16m at 15gpt Au, 22gpt Ag at new Andrea Sur discovery*
- 1 November 2021, *Further high-grade gold and silver demonstrate scale at Malvina*
- 4 October 2021, *Gold and silver assays confirm Malvina discovery*
- 3 September 2021, *Drilling to recommence at Conserrat*
- 30 June 2021, *Exploration Update*
- 10 May 2021, *Emilia Scout Drilling Returns High-Grade Silver*
- 22 April 2021, *New Gold and Silver Zone Defined at Mia*

Investment Highlights

1. MAIDEN INDICATED AND INFERRED MINERAL RESOURCE ESTIMATE FOR CERRO LEON

- 16.46Mt at 172gpt AgEq¹ (72gpt Ag, 0.65gpt Au, 1.2% Zn+Pb) for 92Moz
- 50% of resources in the top 80 vertical meters
- 42% of resources in oxide category, free milling with good metallurgy
- Marketable silver-gold-lead-zinc concentrate produced from test work on sulphide zones

2. STRONG FOUNDATION FOR FUTURE RESOURCE GROWTH

- Proven endowment, next door to world-class Cerro Vanguardia mine
- Immediate focus on low-risk resource growth, mineralisation open at depth and along strike
- Potential for new 'step change' discoveries in underexplored vein field

3. MINING-FRIENDLY PROVINCE WITH HISTORY OF REWARDING INVESTORS

- Home to major miners (Newmont, Pan American Silver, AnlgoGold Ashanti)
- Precedent of majors buying development assets (Cerro Negro US\$3.4B, Cerro Moro C\$414M)

4. CLEAR FRAMEWORK FOR PERMITTING AND CONSTRUCTING MINES

- TSX-V listed Cerrado Gold's Las Calandrias heap leach project received environmental permits for construction in less than 12 months²

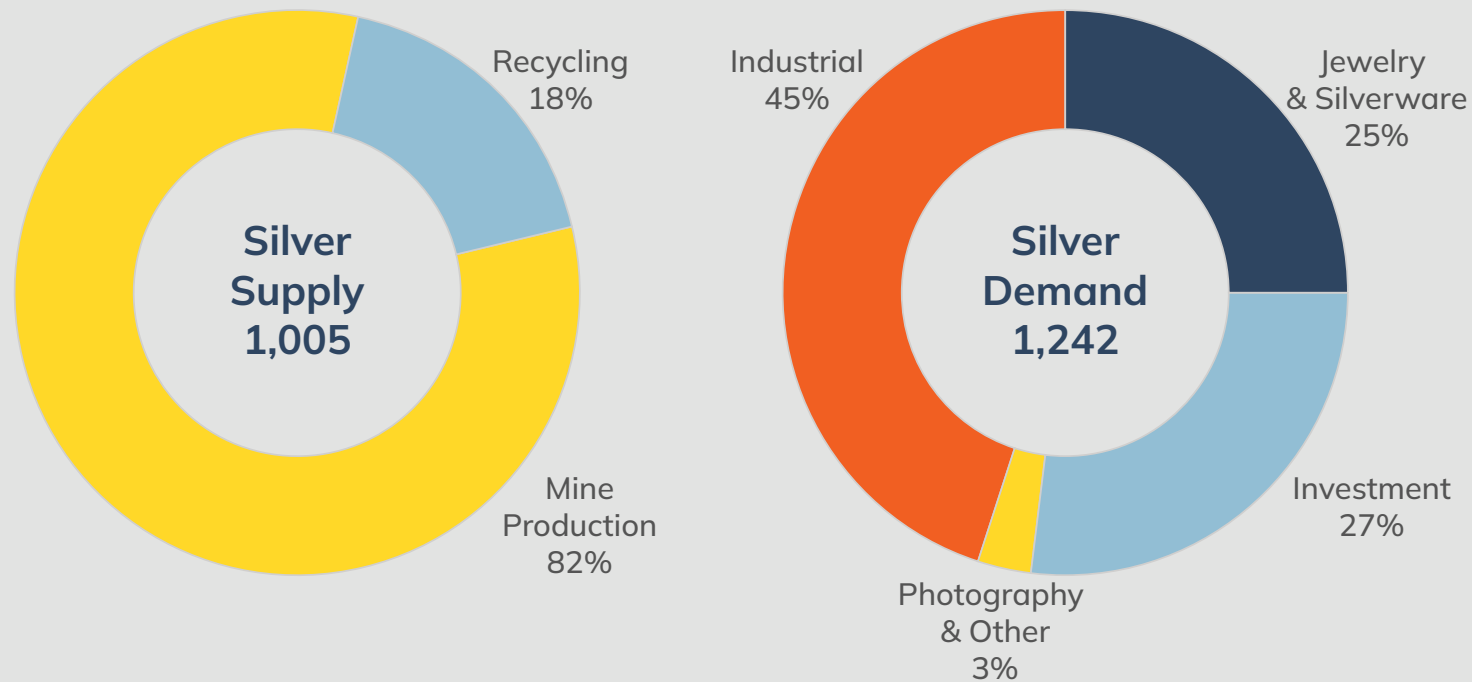
¹Ag Eq = Ag (g/t) + 79.18 x Au (g/t) + 25.56 x Pb (%) + 39.41 x Zn (%)

Where: silver price is \$23.5/oz and recovery is 95%, gold price is \$1964/oz and recovery is 90%, lead price is \$0.95/lb and recovery is 87.6% and zinc price is \$1.39/lb and recovery is 92.3%

²Press Release, 6 March 2023, Cerrado Gold Receives Permits for the Las Calandrias Heap Leach Project Argentina

World Silver Supply and Demand

2022 SUPPLY AND DEMAND³



2022 LARGEST DEFICIT ON RECORD OF +240 MILLION OUNCES

142 MILLION OUNCE SUPPLY SHORTFALL ESTIMATED FOR 2023

SILVER IS BOTH A MONETARY ASSET AND AN INDUSTRIAL METAL THAT IS CRITICAL FOR THE GREEN ENERGY TRANSITION

STRONG LONG TERM FUNDAMENTALS

- Traditional store of wealth, sound money
- Reflective and conductive
- Solar panel and EV demand forecast to be 200 million ounces from 2025

YET..

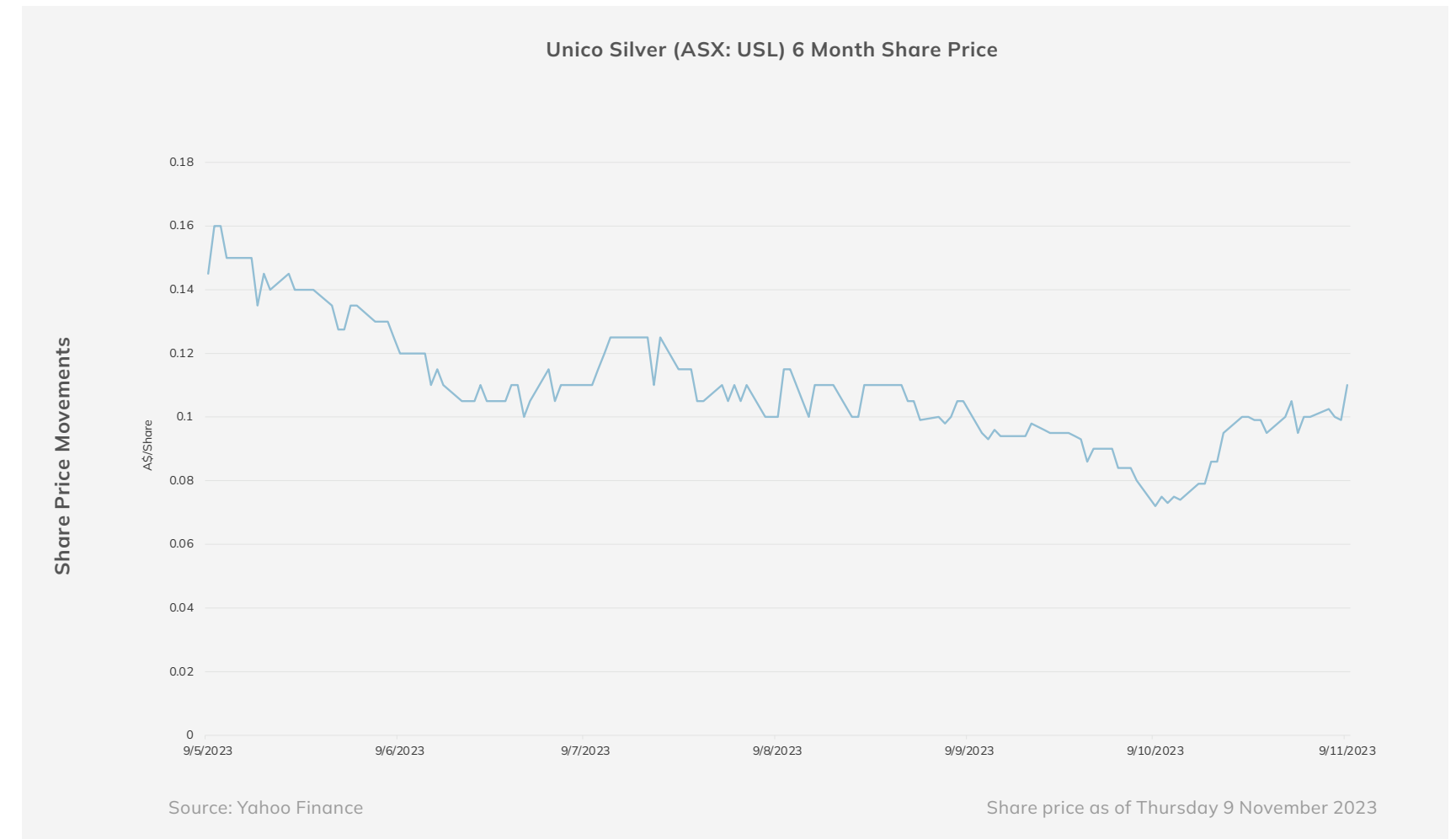
- Pure-play silver mines are rare and hard to find
- You need to go where the silver is

³Source: Silver Institute, April 2023

Corporate Snapshot

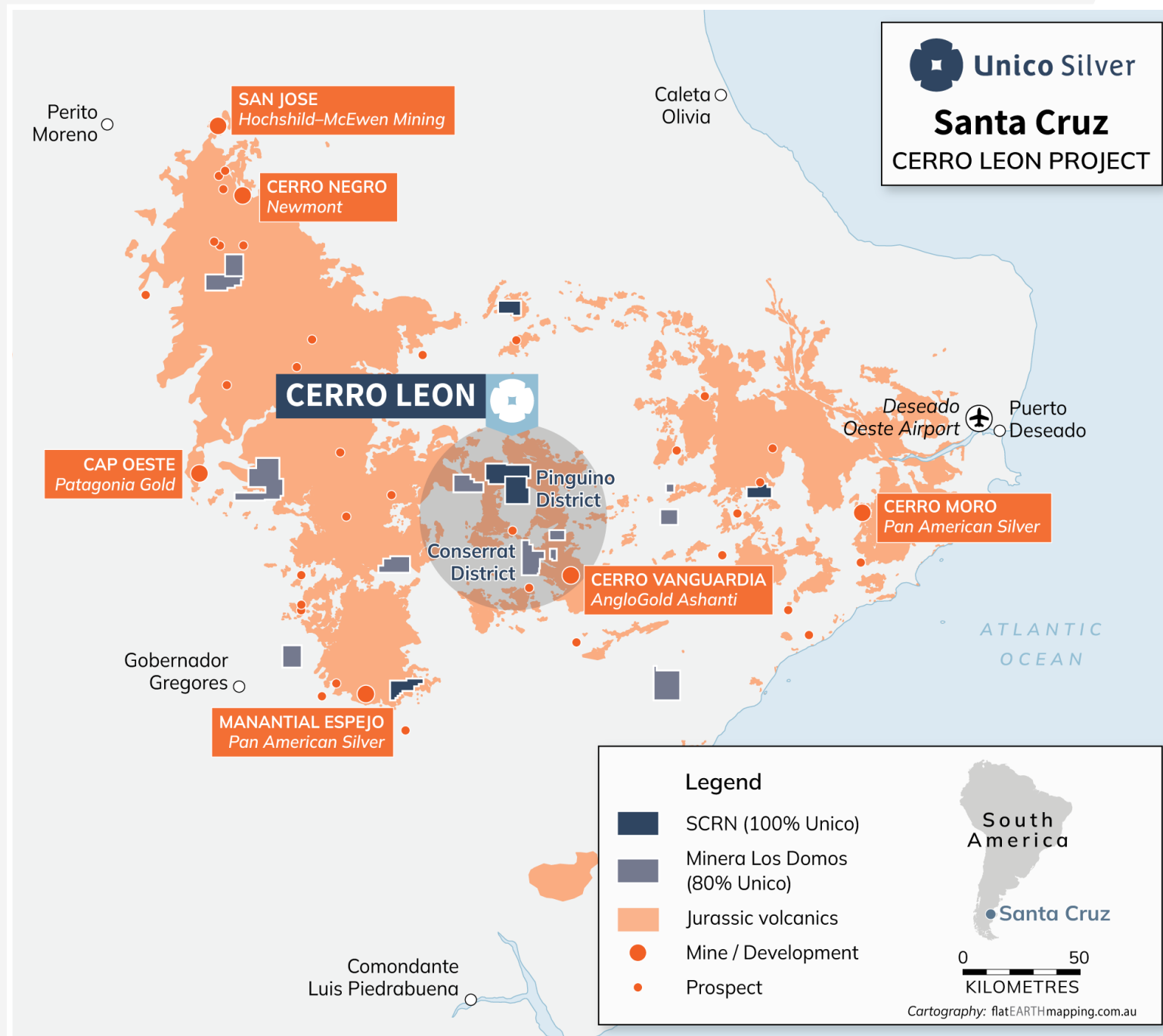


CAPITAL STRUCTURE	
Shares	300M
Market Capitalisation ⁴	A\$30M
Options	50.3M
Cash (31 September 2023)	A\$8.2M
⁴ Market capitalisation at 10 cents per share	
MAJOR SHAREHOLDERS	
Top 20 shareholders	59%
Austral Gold	16.9%
Eric Sprott	5.7%
Acorn Capital	3.7%
Lowell Resource Fund	1%



Board of Directors

Peter Mullens	Chairperson
Todd Williams	Managing Director
Melanie Leydin	Non-Executive Director & Company Secretary
José Bordogna	Non-Executive Director



Growing silver gold resource in the mining-friendly Santa Cruz Province

UNICO SILVER INVESTMENT RATIONALE

- Vision to become a globally important pure-play silver development company listed on the ASX

CERRO LEON KEY HIGHLIGHTS

- 35km from AngloGold Ashanti's Cerro Vanguardia mine and infrastructure
- 92Moz AgEq @ 172gpt and growing
- Options for low-cost open pit and/or head leach operations (e.g. Cerrado Gold's Las Calandrias)
- Opportunities for further regional consolidation

Commanding landholding in world-class precious metal district

RECENT CONSOLIDATION OF TWO ADJACENT SILVER AND GOLD DISTRICTS

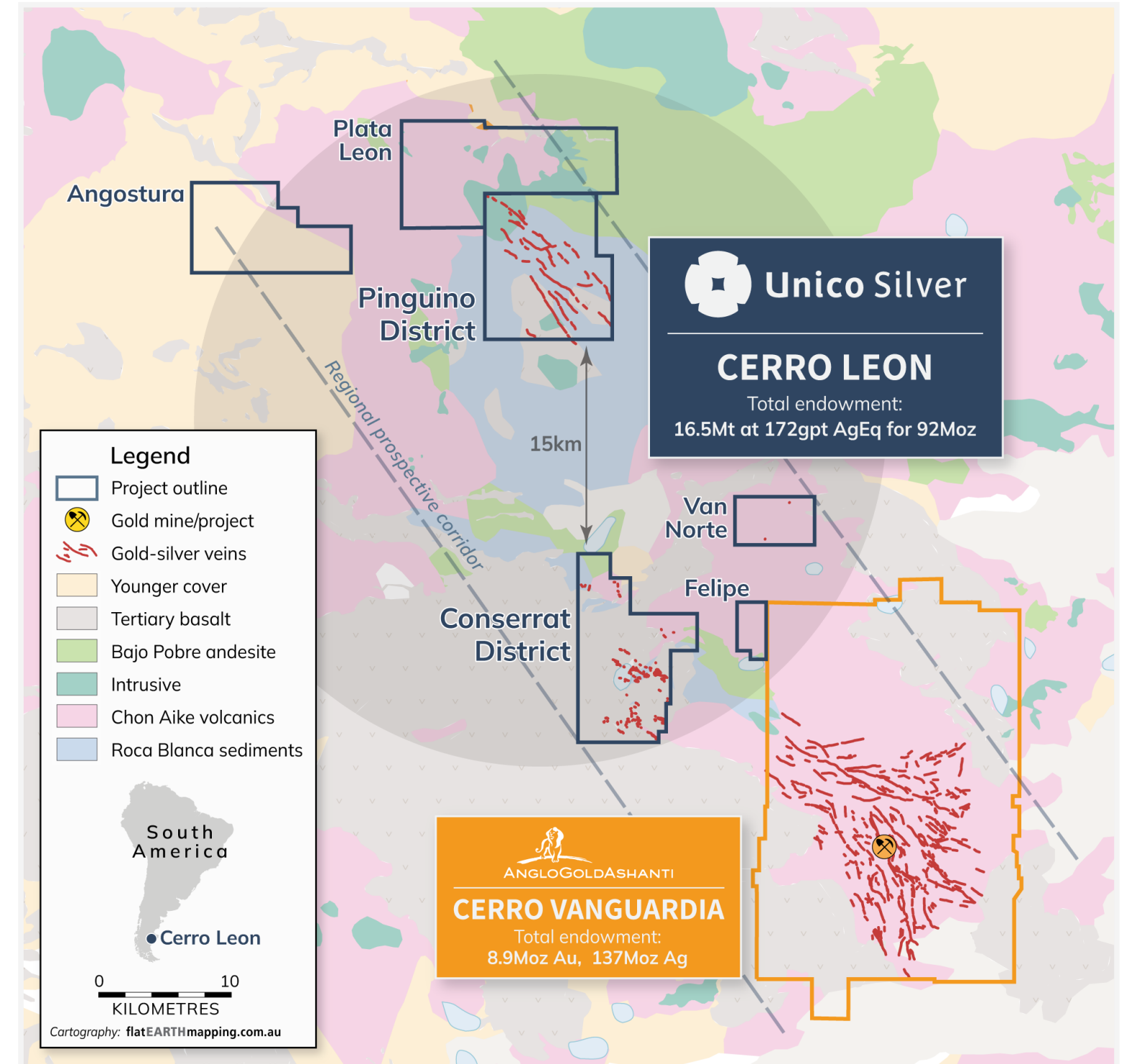
PINGÜINO (100% USL)

- 9,985Ha titles
- Largest undeveloped vein field in Santa Cruz.
Over 100km cumulative strike of outcropping epithermal veins

CONSERRAT (80% USL)

- 18,308Ha titles
- **New greenfield discovery.**
Partially concealed vein field under shallow (<10m cover)

STRATEGICALLY LOCATED NEAR ANGLOGOLD ASHANTI'S CERRO VANGUARDIA MINE AND INFRASTRUCTURE

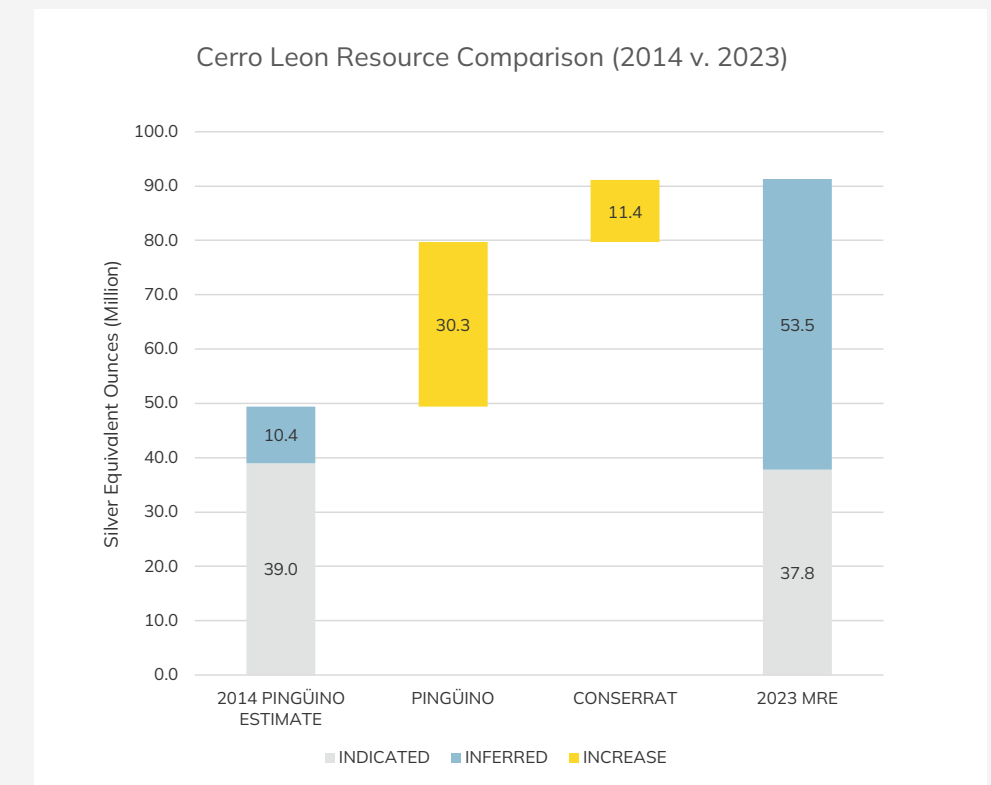
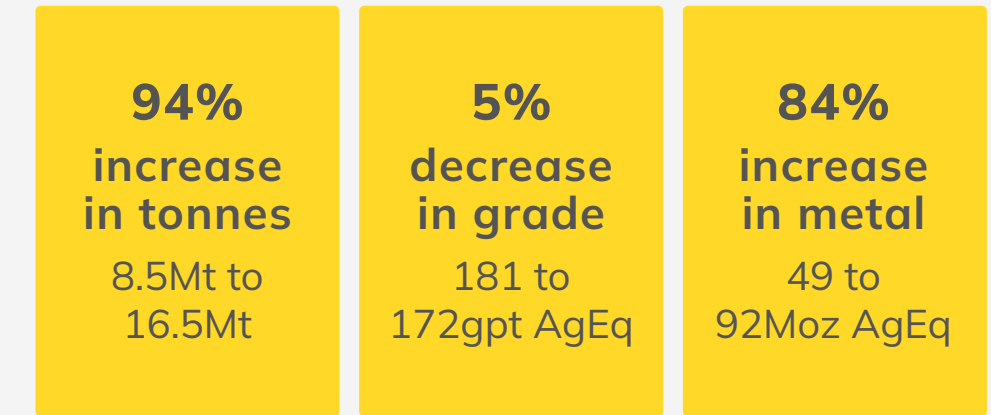


Maiden JORC compliant resources for the Cerro Leon project⁵ published May 2023

16.5 Mt @ 172gpt AgEq for 91 Moz

41 Moz Ag, 344koz Au, 332 Mlb Zn, 129 Mlb Pb

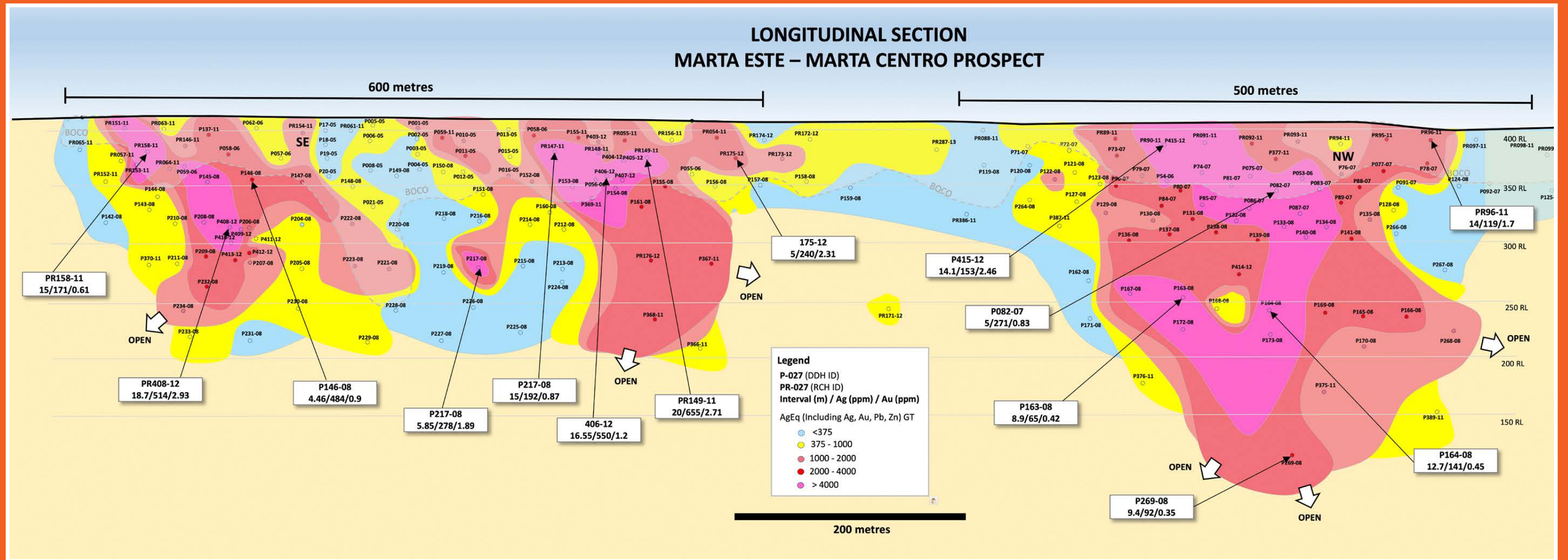
	Zone	Category	Tonnes (Mt)	Ag Eq (g/t)	Ag (g/t)	Au (g/t)	Zn (%)	Pb (%)	AgEq Moz	Ag Moz	Au koz	Zn Mlb	Pb Mlb
Pingüino (100%)	Near Surface Mineralisation (above 250 mRL)	Indicated	6	169	84	0.39	1.12	0.45	33.0	16.4	76	150	60
	Above 50g/t AgEq	Inferred	6.39	174	82	0.78	0.62	0.32	35.8	16.7	160	87	45
	Sub Total Near Surface (above 250 mRL)		12.48	171	83	0.59	0.87	0.39	68.8	33.2	236	238	106
	Below 250 mRL & Above 150 g/t AgEq	Inferred	1.60	215	51	0.55	2.65	0.64	11.1	2.6	28	93	22
	Sub Total deeper (below 250 mRL)		1.60	215	51	0.55	2.65	0.64	11.1	2.6	28	93	22
Total			14.08	176	79	0.59	1.07	0.41	79.9	35.8	265	332	128
Conserrat (80%)	Near Surface Mineralisation (above 150 mRL)	Indicated	0.73	203	100	1.29			4.7	2.3	30		
	Above 50g/t AgEq	Inferred	1.55	114	45	0.88			5.7	2.2	43		
	Sub Total Near Surface (above 150 mRL)		2.27	142	62	1.01			10.4	4.5	73		
	Below 250 mRL & Above 150 g/t AgEq	Inferred	0.11	273	159	1.44			1.0	0.5	5		
	Sub Total deeper (below 150 mRL)		0.11	273	159	1.44			1.0	0.5	5		
Total			2.39	149	67	1.03			11.4	5.1	79		
Cerro Leon Total (100% basis)	Total (variable cutoff 50 and 150 g/t AgEq)	I+I	16.47	172	77	0.65	0.91	0.35	91.3	40.9	344	332	129
	Cutoff	Category	Tonnes (Mt)	Ag Eq (g/t)	Ag (g/t)	Au (g/t)	Zn (%)	Pb (%)	AgEq Moz	Ag Moz	Au koz	Zn Mlb	Pb Mlb
Pingüino (2014)	Variable (40 and 100g/t AgEq)	Indicated	6.28	193	103.4	0.58	0.77	0.54	39.0	20.9	116	107	75
		Inferred	2.21	147	65.3	0.66	0.52	0.35	10.4	4.6	46	25	17
	Total		8.49	181	93.49	0.60	0.70	0.49	49.5	26	163	133	92
Difference (2023 v 2014)			94.0%	-5.0%	-17.3%	8.2%	29.7%	-27.7%	84.4%	60.5%	111.8%	150.4%	39.9%



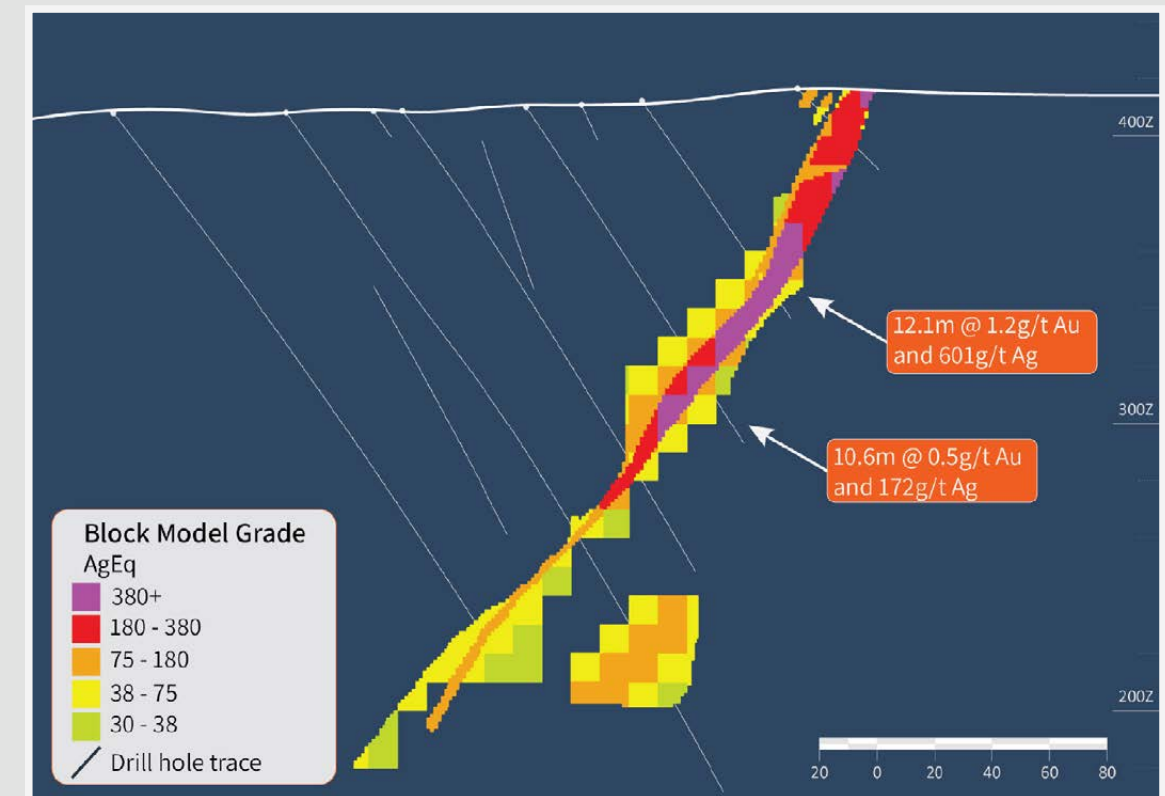
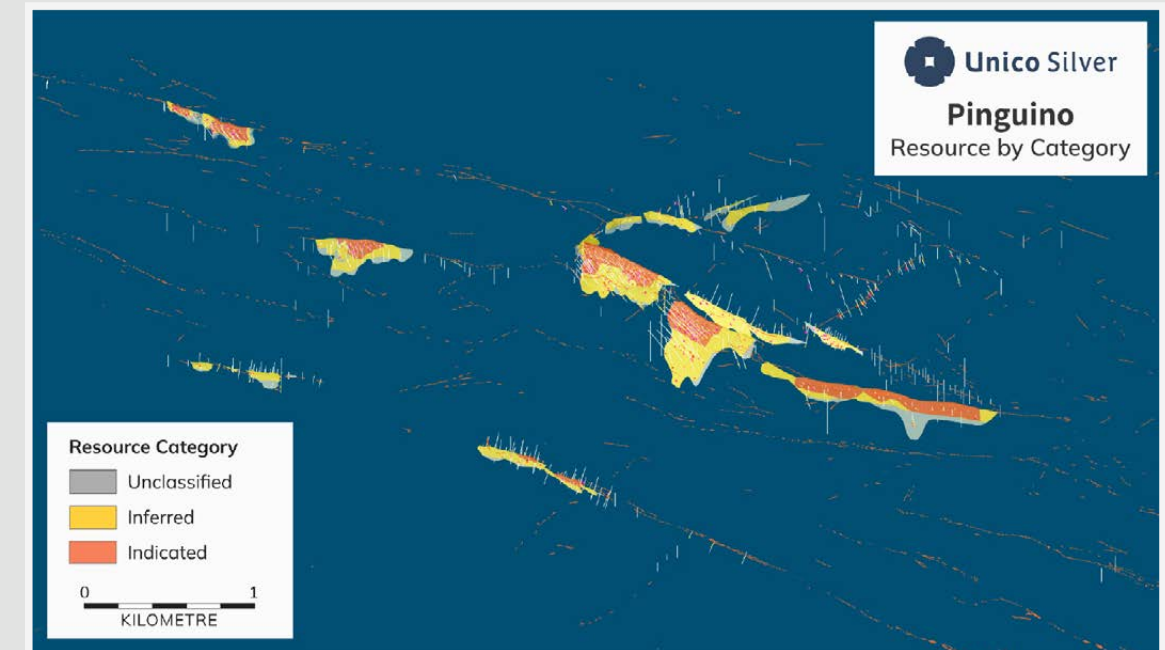
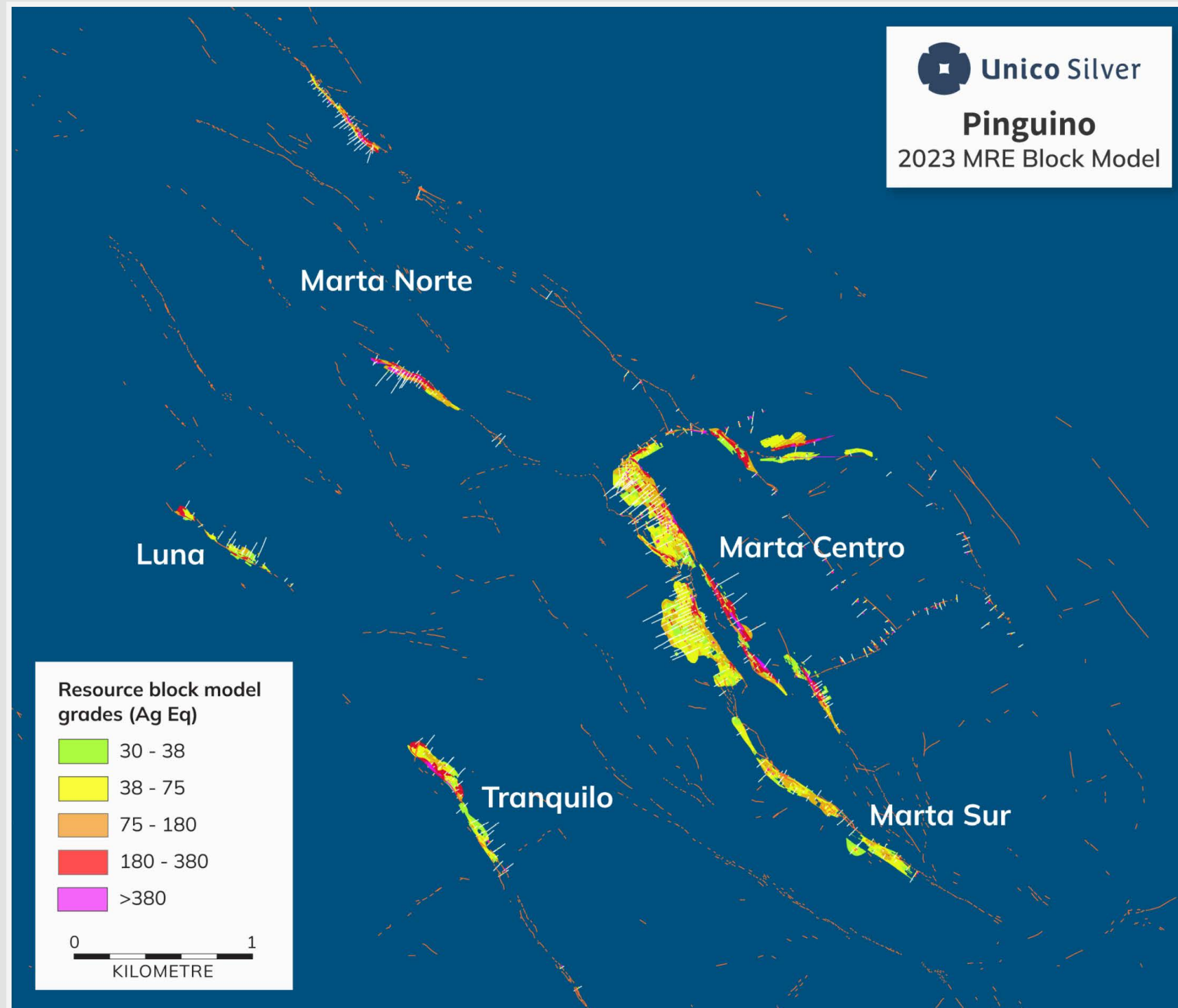
The preceding statements of Mineral Resources conforms to the Australasian Code for Reporting of Exploration Results, Mineral Resources and Ore Reserves (JORC Code) 2012 Edition. Due to rounding to appropriate significant figures minor discrepancies may occur. All tonnages reported are dry metric.

⁵ASX Announcement, 18 May 2023, Cerro Leon silver resource grows 84% to 92 million oz

Marta Este long section

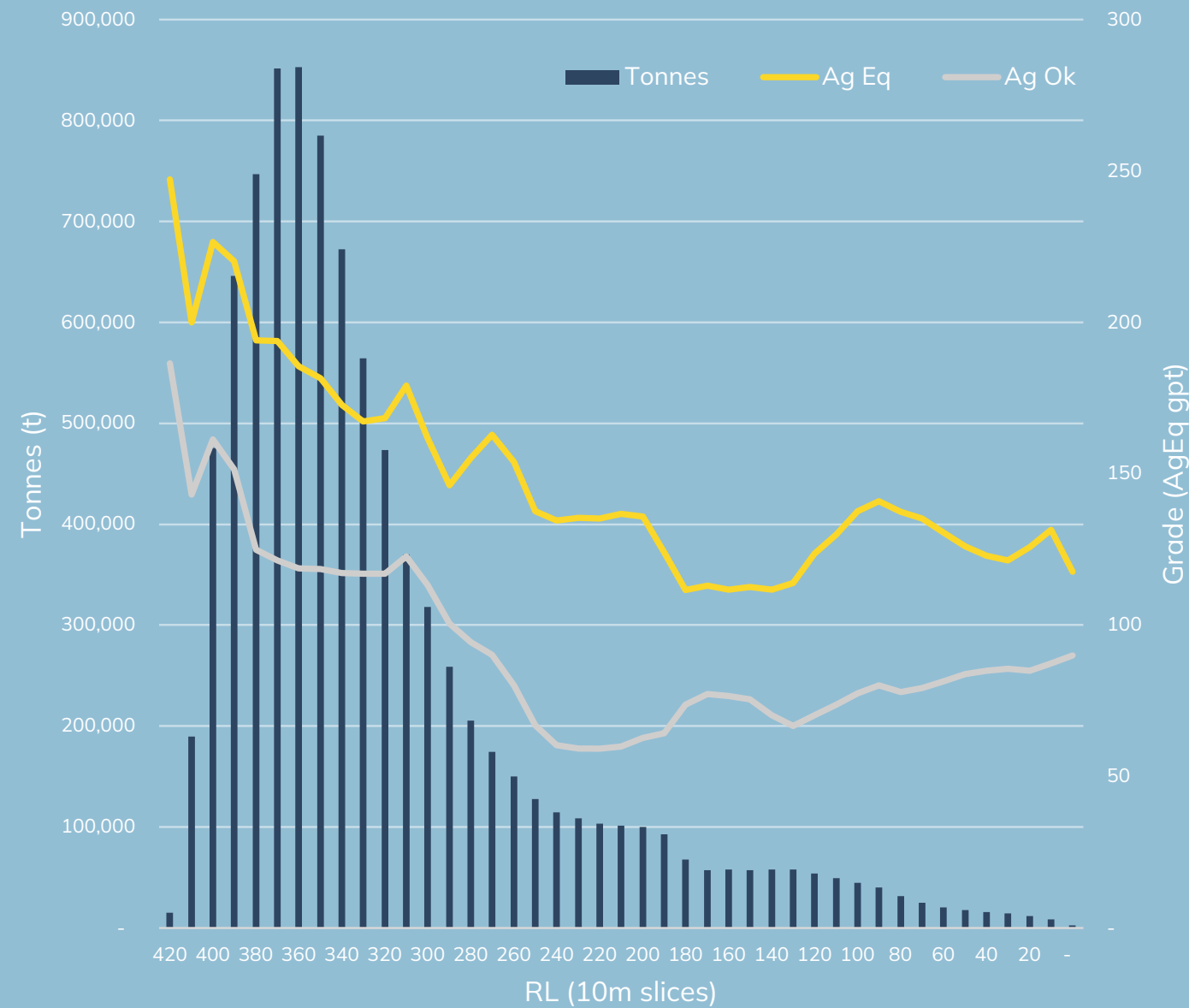


2023 Maiden Resource Estimate (MRE)

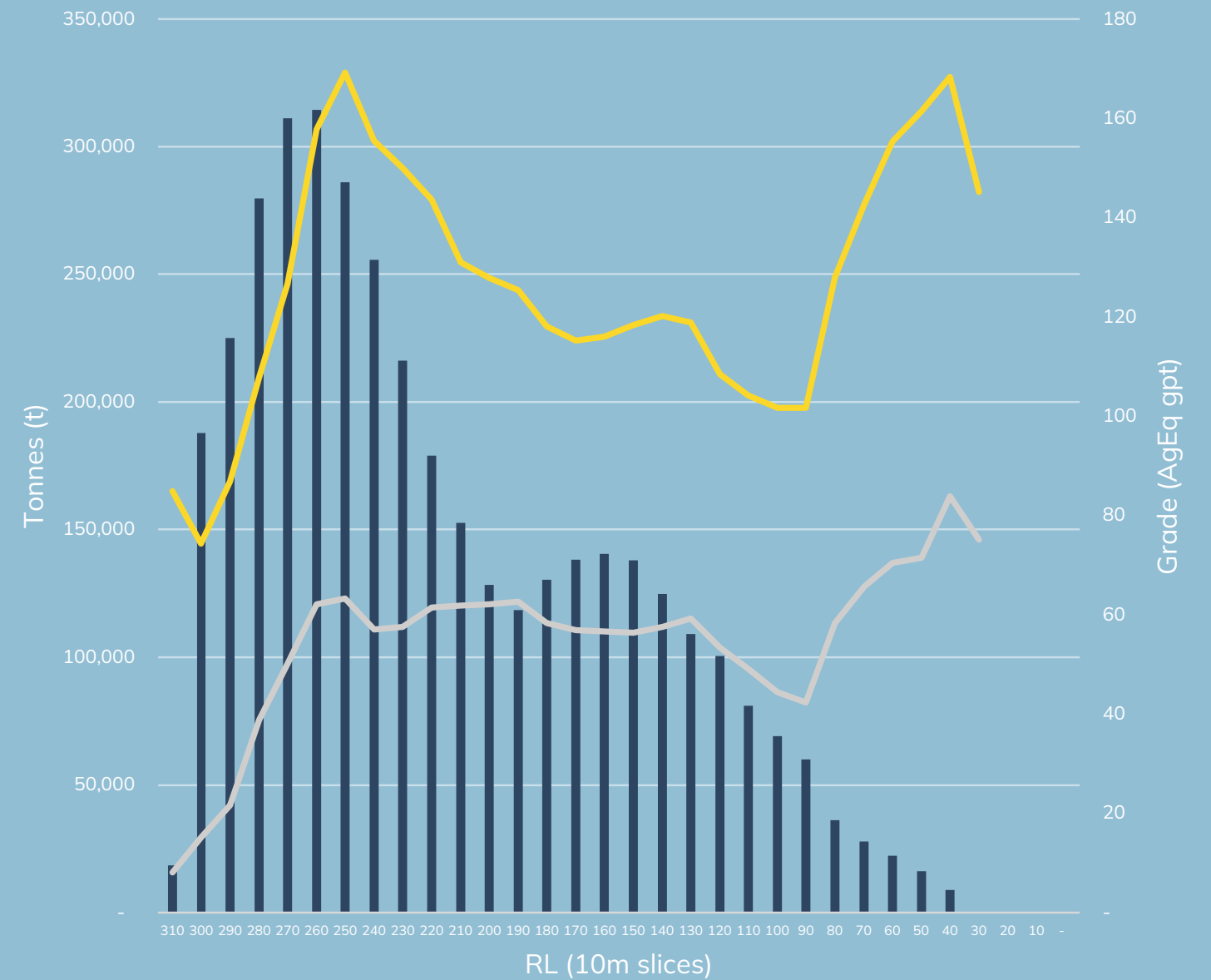


High-grade mineralisation starting from surface, 62% of total MRE in the top 80 vertical meters

Pinguino – MRE tonnes and grade v. depth

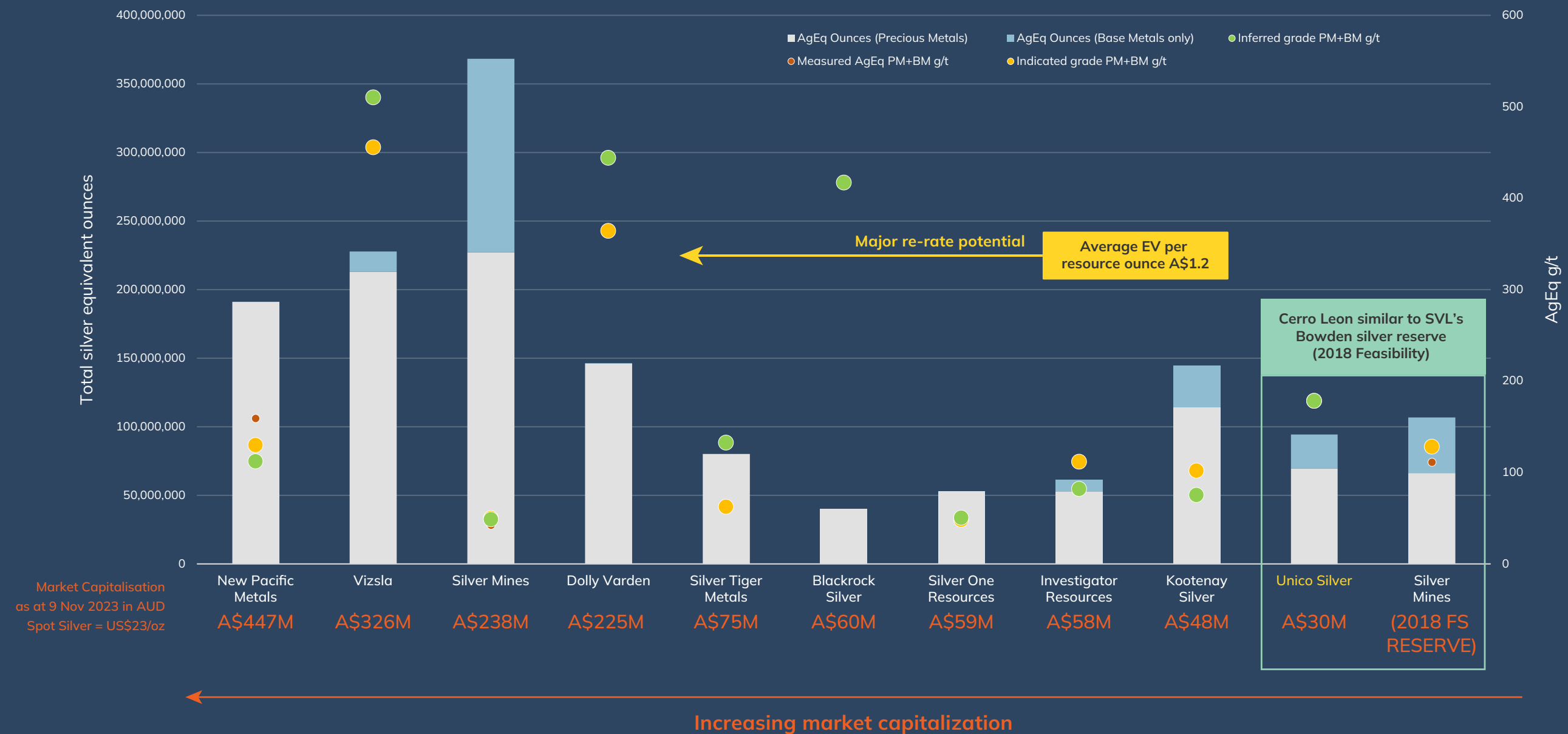


Conserrat – MRE tonnes and grade v. depth

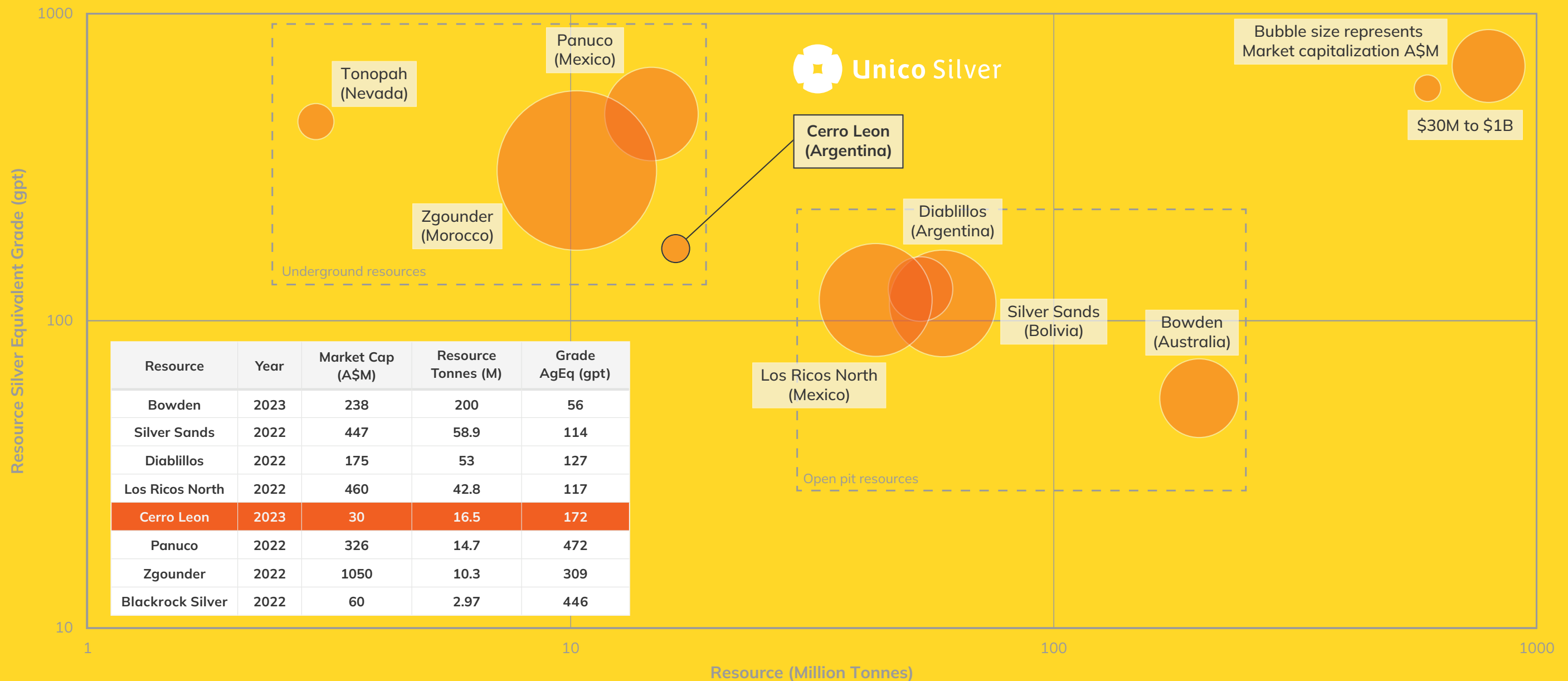


Unico Silver is currently trading at a substantially lower valuation relative to comparable global silver explorers/developers

Average Enterprise Value per silver equivalent resource ounce of A\$1.2



Cerro Leon is one of 7 global silver MRE announced in the last 18 months and ranks well compared to other predominantly open pit resources

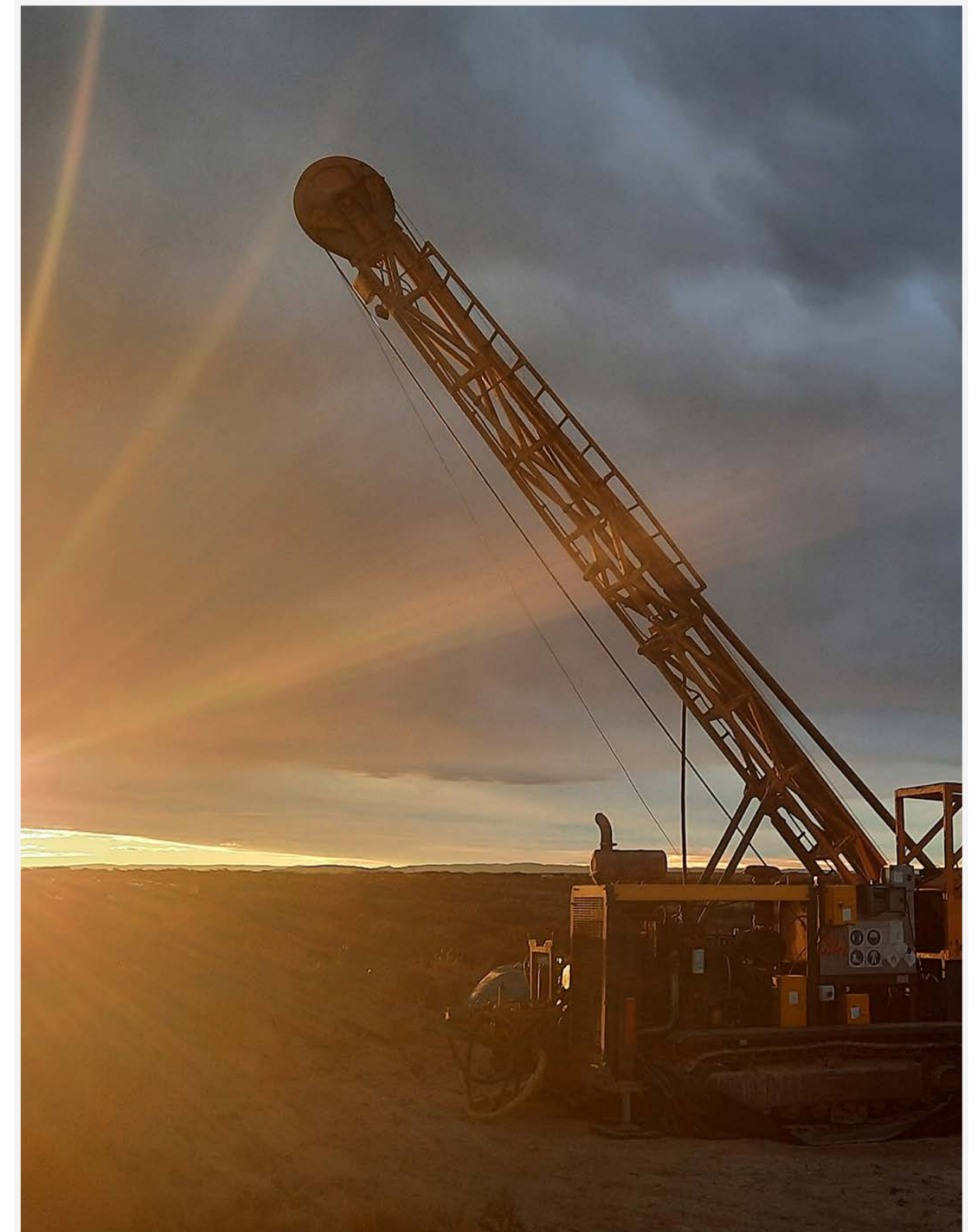


Excellent Return on Investment – “drill meter to resource ounce” in line with high value silver developers

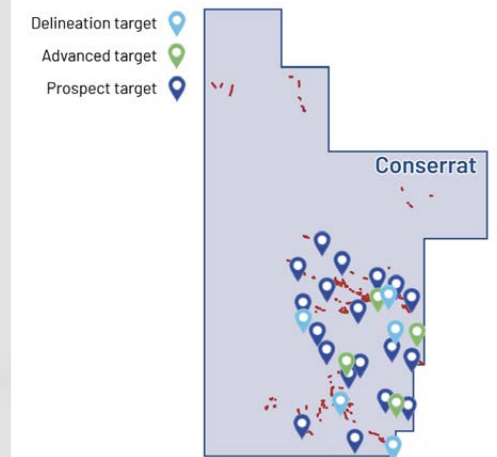
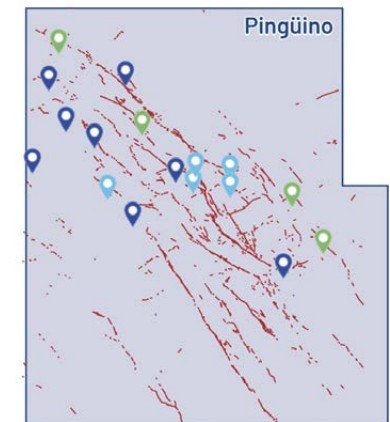
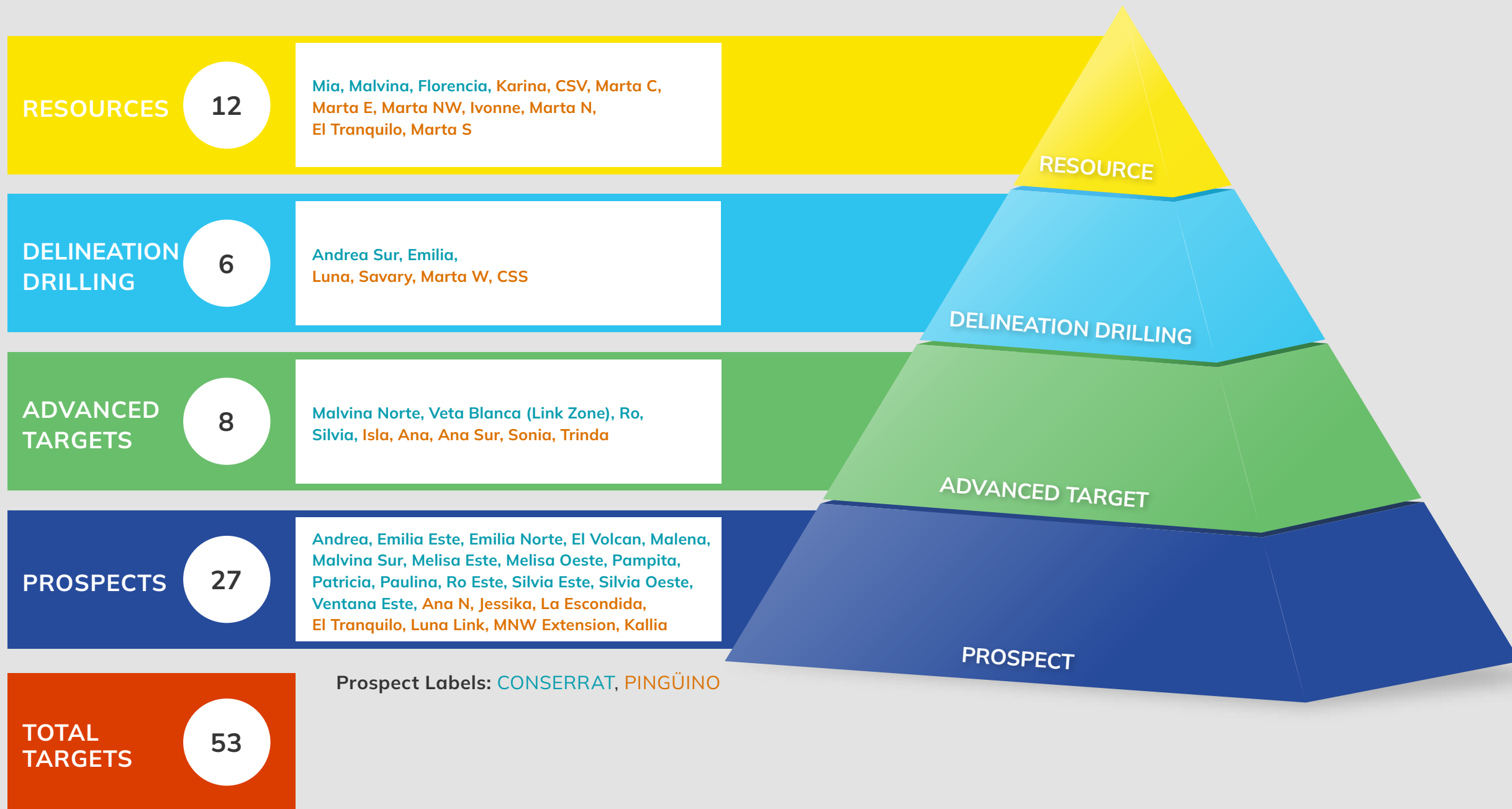
Company	Resource	Year	MC (A\$M)	MT	GRADE	AGEQ Moz	Drill meters	Ag oz/m drilled
New Pacific Metals	Silver Sands	2023	585	58.9	114	213	139,920	1529
AbraSilver	Diablillos	2022	214	53	127	212	104,832	2024
GoGold	Los Ricos North	2021	655	42.8	117	160	92,866	1734
Vizsla Silver	Panuco	2023	449	14.7	472	218	206,778	1058
Aya Gold and Silver	Zgounder	2022	1309	10.3	309	102	136,815	749
Blackrock Silver	Tonopah	2022	67	2.97	446	42	107,740	395
					Average	158	131,492	1,248
Unico Silver	Cerro Leon	2023	30	16.5	177	92	69,330	1,326

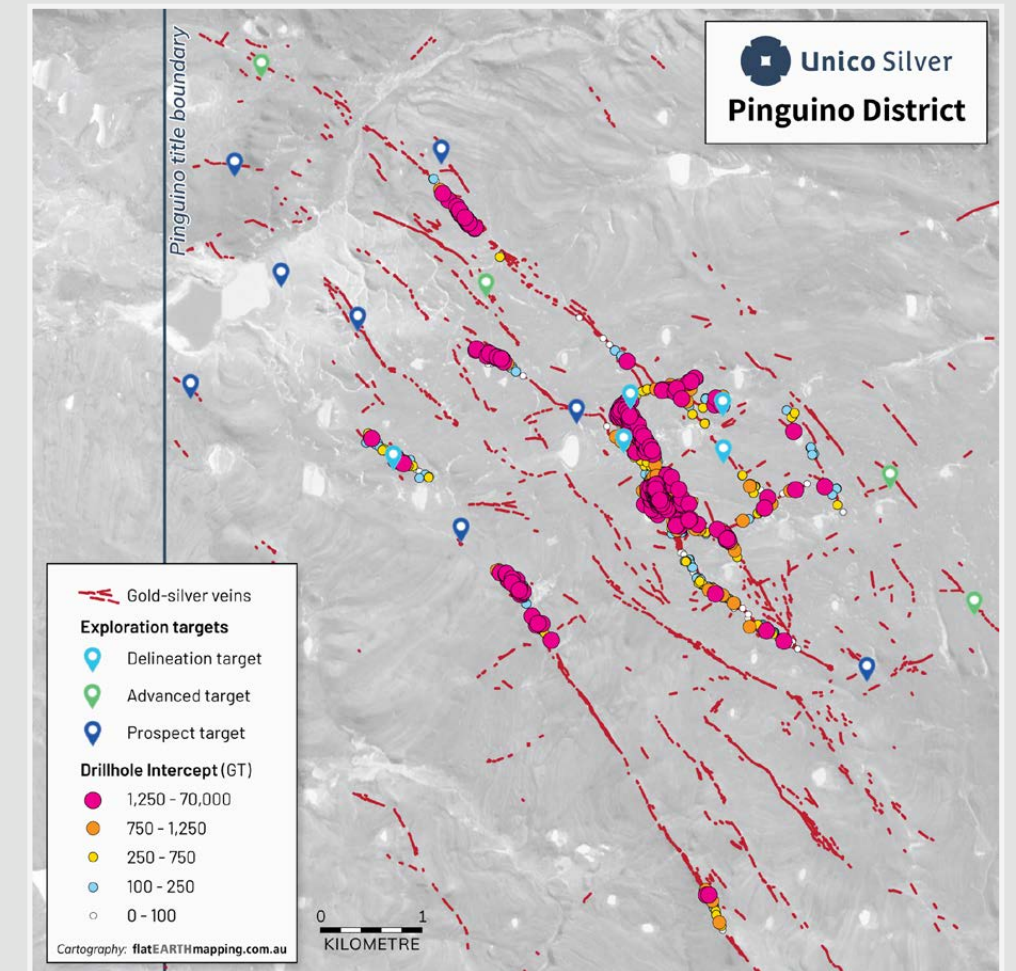
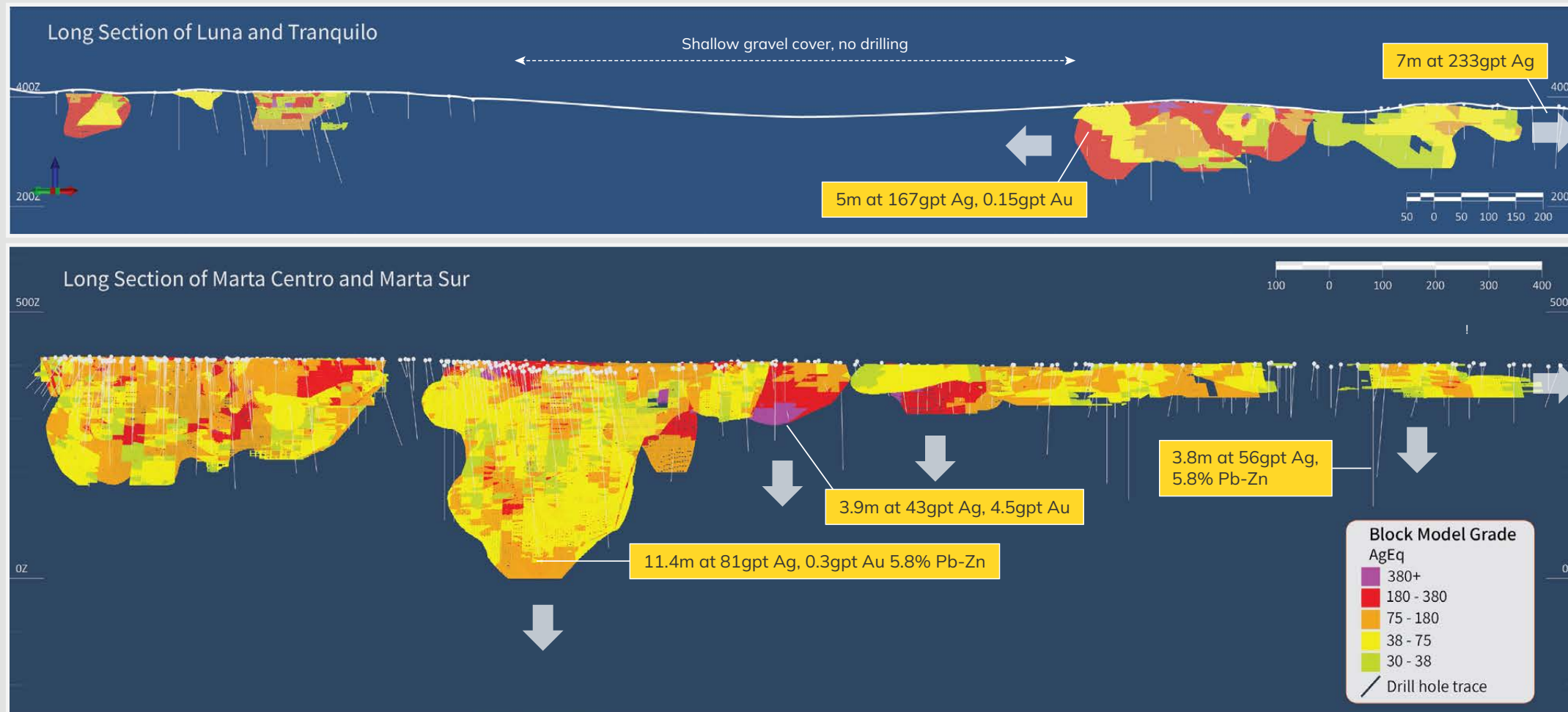
- 2023 MRE includes 463 holes totaling 69,330
- Drilling “ROI” comparable to global silver peers, 1,326 silver equivalent ounces in total resources for each meter drilled
- Project amendable to shallow inexpensive RC drilling
- **All-in exploration and acquisition costs of of A\$0.27 per ounce**

Source: Silver Sands Deposit Preliminary Economic Assessment February 16, 2023; NI 43-101 Technical Reports, Diablillos Project November 2022, NI 43-101 Technical Report LRN Mineral Resource December 2021; Mineral Resource Estimate Update for the Panuco Ag-Au-Pb-Zn Project, Sinaloa State Mexico, March 2023; Technical Report and Updated Mineral Resource Estimate of the Zgounder Silver Project, Kingdom of Morocco, January 2022



Pathway to resource upgrade with potential for new vein discoveries, resource expansion





Mineralised pierce points open at depth or along strike:	
Marta Centro:	(P269-08) 11.4m at 81gpt Ag, 0.3gpt Au, 1.8% Pb, 4% Zn from 363m
Marta Noroeste:	(PR015-11) 5m at 444gpt Ag, 0.6gpt Au from 40m
Marta Sur:	(PR186-12) 4m at 144gpt Ag from 92m
	(PR202-12) 4m at 138gpt Ag, 0.15gpt Au from 64m
	(PR364-11) 3.8m at 56gpt Ag, 1.4% Pb, 4.4% Zn from 157m
Tranquillo:	(P314-10) 7.2m at 233gpt Ag
	(PR306-13) 5m at 167gpt Ag, 0.15gpt Au from 22m

Levers for future resource growth

- Over 115km cumulative strike of epithermal veins (20% tested)
- Extensions / infill of current vein resources
- 12 targets prioritised for high-impact discovery drilling



CONSERRAT DISTRICT

- Structure target
- - - CSAMT structure

Exploration targets

- 📍 Delineation target
- 📍 Advanced target
- 📍 Prospect target

Drillhole Intercept (Grade thickness)

- > 20
- 5 - 20
- 1 - 5
- < 1

Rock Chip Samples (Au Eq x70)

- ▼ > 3.00
- ▼ 1.00 - 3.00
- ▼ 0.25 - 1.00
- ▼ 0.10 - 1.00
- ▼ < 0.10

Younger Cover

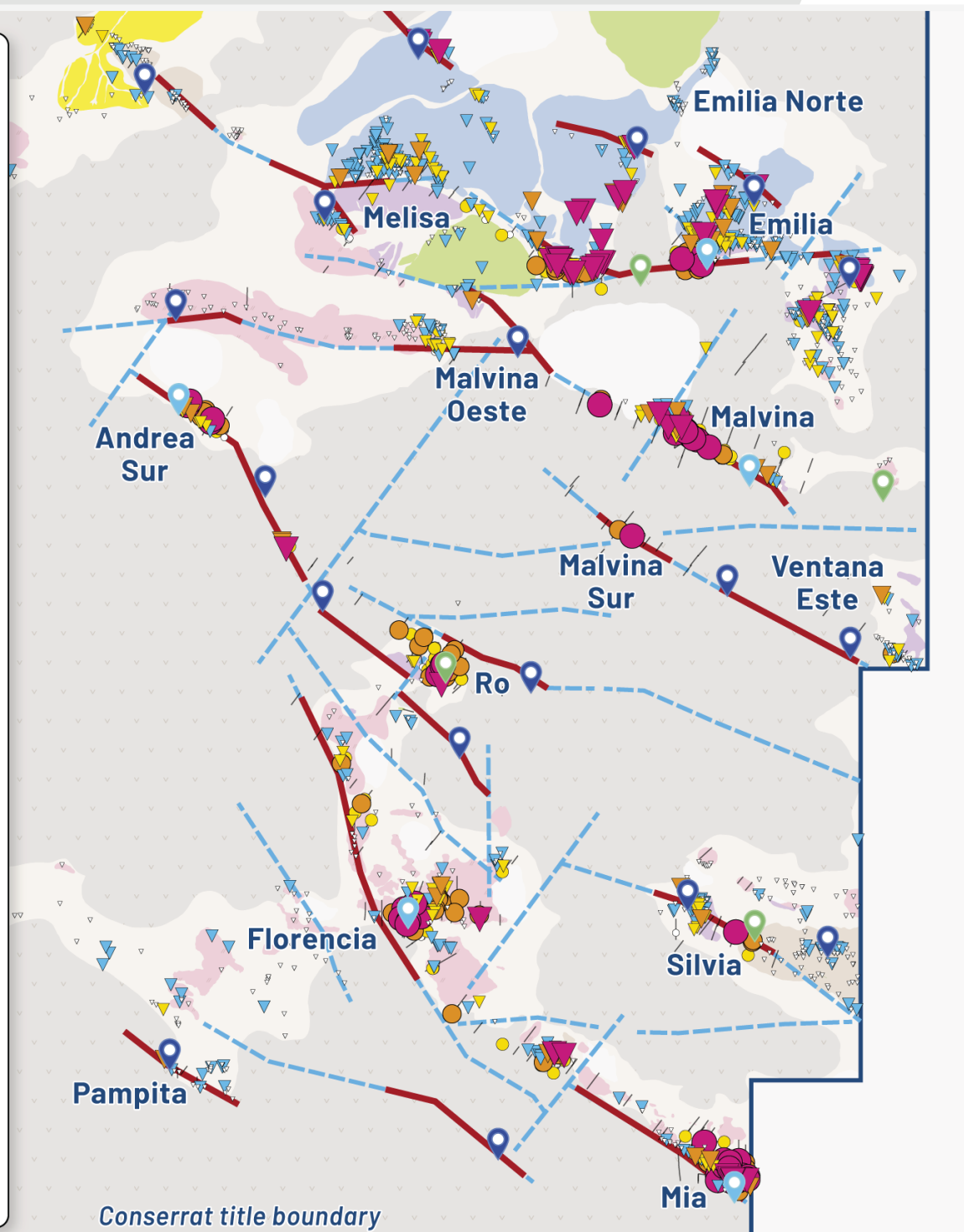
- Colluvium
- Tertiary Basalt

Jurassic

- Quartz Eye Tuff
- White Lithic Tuff
- Felsic Tuff
- Andesite
- Sediments

1000m

Cartography: flatEARTHmapping.com.au



Conserrrat

PIECING TOGETHER A NEW DISTRICT

TWO ADVANCED DISCOVERIES

- Mia and Malvina

21 UNTESTED REGIONAL TARGETS, MULTIPLE ADVANCED PROSPECTS

- **Malvina:** 1.7m at 2451gpt AgEq open at depth
- **Andrea Sur:** 4m at 745gpt AgEq open at depth, along strike
- **Silvia:** 3m at 344gpt AgEq open at depth
- **Emilia:** 9.5m at 411gpt AgEq open along strike

NEW HIGH GRADE SURFACE TARGETS

- Emilia Norte: untested structure, 900m strike, up to 9.9gpt Au, 1310gpt Ag

CSAMT GEOPHYSICAL SURVEY (MAY 2022)

- Survey completed in May to map prospective vein structures under Tertiary basalt cover.
- New 3D structural and geological model

Next Steps

Achieved

Cerro Leon Maiden Resource

- 92Moz AgEq at 172gpt
- 94% increase in tonnes
- 84% increase in total ounces

Elevation into a new peer group, comparable to high value global silver developers

In progress

Cerro Leon Drill Planning

Focus on:

- Low-risk resource extensions
- Conversion of inferred resources to indicated
- 35 prospects prioritized for high-impact discovery drilling

Next Steps

Cerro Leon Resource Growth

Increase Cerro Leon MRE to >150Moz AgEq

Experienced Board and Management

PETER MULLENS · NON-EXECUTIVE CHAIRPERSON

Peter is a highly experienced and degree qualified geologist with 30 years' experience in the minerals industry. Most noteworthy, Mr. Mullens was responsible for Mount Isa Mines (MIM) first entry into the Cerro Negro project and was the co-founder of the Ironbark Group of companies including Aquiline Resources which held the world-class Navidad silver deposit (750 million ounces silver) prior to the 2009 takeover by Pan American Silver for CAD\$645m. Mr. Mullens is currently the Executive Chairman of Greenshift Commodities listed on the TSX-V.

TODD WILLIAMS · MANAGING DIRECTOR

Mr Williams is an exploration geologist with a Bachelor of Science graduating from the University of Adelaide in 2011. From 2015 to his appointment as Managing Director of Unico Silver (formally E2 Metals), Mr Williams was the founder and principal of Circum Pacific Pty Ltd, a private Australian-based but South American focused gold explorer. During this time, he managed the development of greenfields projects in Colombia and Argentina, including the Company's Santa Cruz and Rio Negro projects.

MELANIE LEYDIN · NON-EXECUTIVE DIRECTOR & COMPANY SECRETARY

Ms Leydin holds a Bachelor of Business majoring in Accounting and Corporate Law. She is a member of the Institute of Chartered Accountants and is a Registered Company Auditor. She graduated from Swinburne University in 1997, became a Chartered Accountant in 1999 and since February 2000 has been the principal of Leydin Freyer. The practice provides outsourced company secretarial and accounting services to public and private companies specialising in ASX listed entities. Ms Leydin has over 25 years' experience in the accounting profession and has extensive experience in relation to public company responsibilities, including ASX and ASIC compliance, control and implementation of corporate governance, statutory financial reporting, reorganisation of Companies and shareholder relations.

JOSÉ BORDOGNA · NON-EXECUTIVE DIRECTOR

Mr. Bordogna is a highly experienced accountant and is the CFO of Austral Gold Limited. During his time with Austral Gold, Mr. Bordogna has overseen the conversion of more than US\$50 million in debt to equity, more than \$15m in equity investments with TSX-V listed exploration companies with assets in South America, as well as more than US\$50m in direct investments in key exploration and mining-related assets in Argentina and Chile. Prior to joining Austral Gold, Mr. Bordogna worked for the International Finance Corporation (World Bank Group) and Deloitte & Touche in Latin America. He has over 15 years' experience in finance, investment banking and accounting roles. Mr. Bordogna holds an accounting degree from the Pontificia Universidad Católica Argentina, a Masters of International Business from the University of Sydney, Australia, and a Global Executive MBA from IE Business School, Spain.

EMILIO BASTIAS · COUNTRY MANAGER

Emilio is a lawyer, qualified at the Bar in Argentina, specialising in mining law, including foreign investments and incorporation of new businesses in the sector. He has over 14 years working along different exploration mining companies for the developing of projects located in Argentina, Colombia and Uruguay. Emilio holds a LLM in Mining Law and Policy from the CEPMLP, University of Dundee and is currently based in San Juan, Argentina where he co-founded Bastías Yacante Law Firm.

PATRICIO BRIVIDORO · VP EXPLORATION

Former Lead Geologist: Generative Exploration for Newmont (Cerro Negro). 14 years experience in gold and silver exploration in Santa Cruz, including former roles as Chief Geologist at Argentex (Pinguino) and Lead Geologist Exploration at Goldcorp where he led the technical team to four new vein discoveries (Silica Cap, Gato Salvaje).



Appendix 1: Cerro Leon Mineral Resource Estimate (2023)

	Zone	Category	Weathering	Tonnes (Mt)	Ag Eq (g/t)	Ag (g/t)	Au (g/t)	Zn (%)	Pb (%)	AgEq Moz	Ag Moz	Au koz	Zn Mlb	Pb Mlb
Pingüino (100%)	Near Surface Mineralisation (above 250 mRL)	Indicated	Oxidised	1.93	204	143	0.70	0.05	0.26	12.7	8.91	43.3	1.92	10.91
	Above 50g/t AgEq		Transtional	0.77	181	116	0.53	0.42	0.37	4.5	2.88	13.1	7.08	6.25
			Fresh	3.39	146	43	0.18	1.90	0.58	15.9	4.66	20.1	141.79	43.41
		Inferred	Oxidised	1.36	203	138	0.73	0.05	0.26	8.9	6.05	31.8	1.37	7.83
			Transtional	0.88	161	109	0.45	0.29	0.30	4.5	3.07	12.6	5.63	5.87
			Fresh	4.16	167	57	0.87	0.88	0.35	22.4	7.62	115.9	80.77	31.93
	Sub Total Near Surface (above 250 mRL)			12.48	171	83	0.59	0.87	0.39	68.8	33.20	236.8	238.53	106.19
	Below 250 mRL & Above 150 g/t AgEq	Inferred	Fresh	1.60	215	51	0.55	2.65	0.64	11.1	2.61	28.3	93.46	22.56
	Sub Total deeper (below 250 mRL)			1.60	215	51	0.55	2.65	0.64	11.1	2.61	28.3	93.46	22.56
	Total			14.08	176	79	0.59	1.07	0.41	80	35.80	265.1	331.99	128.76
Conserrat (80%)	Near Surface Mineralisation (above 150 mRL)	Indicated	Oxidised	0.22	99	36	0.79			0.7	0.26	5.6		
	Above 50g/t AgEq		Transtional	0.37	271	136	1.71			3.2	1.62	20.4		
			Fresh	0.14	183	108	0.95			0.8	0.47	4.1		
		Inferred	Oxidised	0.36	110	39	0.90			1.3	0.46	10.5		
			Transtional	0.59	140	56	1.06			2.7	1.06	20.1		
			Fresh	0.59	91	37	0.69			1.7	0.70	13.1		
	Sub Total Near Surface (above 150 mRL)			2.28	142	62	1.01			10.4	4.57	73.9		
	Below 150 mRL & Above 150 g/t AgEq	Inferred	Transtional	0.02	386	297	1.13			0.2	0.17	0.6		
			Fresh	0.09	250	132	1.49			0.8	0.40	4.5		
	Sub Total deeper (below 150 mRL)			0.11	272	159	1.43			0.97	0.57	5.13		
Total			2.39	149	67	1.03			9.98	4.38	79.05			

Appendix 2: Peer Group financial and mineral resource information as of 9 November 2023

Company	fx rate 9 Nov 2023	Index	Market Cap A\$M 9 Nov 2023	C/O grade	Measured Tonnes	Measured Grade AgEq g/t	Measured AgEq (oz)	Indicated tonnes	Indicated Grade AgEq g/t	Indicated AgEq (oz)	Inferred tonnes	Inferred Grade AgEq g/t	Inferred AgEq (oz)
New Pacific Metals ⁶	1.12	TSX	\$447	45g/t	8,400,000	159	42,940,537	26,990,000	130	112,807,324	9,840,000	112	35,432,695
Vizsla ⁷	1.12	TSX	\$326	150g/t AgEQ				7,500,000	455	109,794,785	7,200,000	510	118,058,503
Kootenay Silver ⁸	1.12	TSX	\$48	35g/t, 20g/t	13,912,000	103	45,882,399	15,176,215	102	49,729,501	20,279,000	75	49,071,335
Silver Tigre Metals ⁹	1.12	TSX	\$75	16g/t, 31g/t, 126g/t				25,908,000	62	52,025,715	6,579,000	132	28,017,638
Silver One Resources ¹⁰	1.12	TSX	\$59	15.6g/t (0.5 opt)				22,184,000	48	34,438,066	11,451,000	50	18,465,875
Dolly Varden ¹¹	1.12	TSX	\$225	150g/t Ag, 2g/t AuEq				4,153,000	364	48,639,030	6,830,300	444	97,517,942
Blackrock Silver ¹²	1.12	TSX	\$60	200g/t AgEQ							2,975,000	417	39,879,307
Investigator Resources ¹³	1	ASX	\$58	30g/t Ag				12,700,000	112	45,566,812	6,100,000	82	16,019,395
Silver Mines ¹⁴	1	ASX	\$238	30g/t Ag	107,000,000	64	220,244,355	50,000,000	50	80,576,632	43,000,000	49	67,330,542
Unico Silver	1	ASX	\$30	50g/t and 150g/t				6,819,000	178	39,027,853	9,649,000	178	55,316,746

⁶<https://www.newpacificmetals.com/wp-content/uploads/2023/01/Silver-Sand-Deposit-Mineral-Resource-Report-%E2%80%93-June-3-2020-2.pdf>

⁷https://vizslasilvercorp.com/site/assets/files/7349/panuco_2023_43101_resource_report_update_mre_for_vizsla_silver_23_03_10_final.pdf ⁸<https://kootenaysilver.com/assets/docs/projects/northair43-101.pdf>

⁹<https://www.sedar.com/CheckCode.do;jsessionid=0000U7CdZOmWixRhQ16w5QbgZ3H:1884ter20> ¹⁰<https://silverone.com/projects/overview/> ¹¹<https://dollyvardensilver.com/dolly-var-den/>

¹²https://blackrocksilver.com/wp-content/uploads/2022/06/NI43-101_Tonopah-West.pdf ¹³<https://wcsecure.weblink.com.au/pdf/IVR/02388572.pdf> ¹⁴<https://www.silvermines.com.au/wp-content/uploads/2023/03/2533589.pdf>



Unico Silver

Unico Silver Limited

ASX:USL

ABN: 34 116 865 546

Address: Level 4, 100 Albert Road

South Melbourne VIC 3205

P: +61 3 9692 7222

F: +61 3 9077 9233

E: info@unicosilver.com.au

W: www.unicosilver.com.au