



Well-funded Silver Explorer Focused on Resource Growth in Santa Cruz, Argentina

Fully funded 50,000m drill program underway,
unlocking new discoveries and growth

Investor Presentation

March 2025



Unico Silver

ASX:USL

Forward looking statements and disclosures



DISCLAIMER

The following material is for general information purposes only and is not to be relied upon for the making of an investment decision. Any investment in Unico Silver Limited ACN 116 865 546 (USL) is subject to investment risk including the possibility of loss of capital invested and no return of income or payment of dividends. Neither USL nor any other entity or person in or associated with the USL group of companies guarantees any return (whether capital or income) or generally the performance of USL or the price at which its securities may trade.

In particular, this presentation is not a recommendation, offer or invitation to subscribe for or purchase USL securities. It is not for general distribution or third party reliance or use. While it has been prepared from sources USL believe to be reliable, USL cannot guarantee its accuracy or completeness and undertakes no obligation to advise of changes or updates to any such materials.

These materials are not exhaustive of all of the information a potential investor or their professional adviser would require. Nor do these materials take into account any specific objectives, financial situation or needs of investors. In addition, the past performance of USL cannot be assumed as indicative of the future performance of the company. For these and other reasons, before making any investment decision regarding USL securities you are strongly recommended to obtain your own up to date independent legal, financial and investment advice – those acting without such advice do so at their own risk.

Where this presentation does contain any forward looking statements, those statements are only made as the date of the presentation and are to be considered “at-risk statements” not to be relied upon as they are subject to further research and to known and unknown risks, uncertainties and other factors that may lead to actual results differing from any forward looking statement. This is particularly the case with companies such as USL which operate in the mining industry.

COMPETENT PERSON STATEMENT

This presentation contains information extracted from previous ASX releases which are referenced in the report. The Company is not aware of any new information or data that materially affects the information included in the original market announcements. The Company confirms that the form and content in which the Competent Person’s findings are presented have not been materially modified from the original market announcements.

- 12 March 2025, Cerro Leon drill results
- 13 January 2025, Cerro Leon drill results
- 11 December 2024, Cerro Leon drill results
- 9 October 2024, Priority Silver Targets Outlined at Cerro Leon
- 20 August 2024, Acquisition of Joaquin silver district
- 20 May 2024, Acquisition of Sierra Blanca project
- 13 May 2024, Cerro Leon Exploration Target
- 26 March 2024, Unico moves to 100% ownership of Conserrat
- 18 May 2023, Cerro Leon silver resource grows 84% to 92Moz
- 25 November 2022, Transformative 100% Acquisition of advanced Pingüino silver gold project

CERRO LEON EXPLORATION TARGET

Information in this report that relates to Exploration results and targets is based on, and fairly reflects, information compiled by Unico Silver Limited and Todd Williams, a Competent Person who is a Member of the Australian Institute of Geoscientists. Mr. Williams is the Managing Director to Unico Silver Limited and has sufficient experience that is relevant to the style of mineralisation and type of deposit under consideration and to the activity, which he is undertaking to qualify as a Competent Person as defined by the 2012 Edition of the Australasian Code for Reporting of Exploration Results, Mineral Resources and Ore Reserves. Mr. Williams consents to the inclusion of the data in the form and context in which it appears.

Vision >>

To grow a globally significant silver development company with +300Moz silver equivalent resources.

Investment Summary

Point Of Difference



Emerging silver developer

Well-funded with \$25.4m cash
(Dec-24 Qtr)

Santa Cruz pro-mining province, clear
permitting framework

160Moz AgEq total resources*

Aggressive 50,000m drill program
underway

*See Appendix A and B

Track Record



2-year focus on consolidation during
low silver price environment:

Acquisition of key infrastructure

- 150-person camp
- Land ownership and access
agreements in place for all priority
targets

Resource Growth Potential



Two fertile vein districts (Cerro Leon
and Joaquin) with scale and
endowment:

- One phase of prior exploration.

Focus on rapid resource growth

- low-risk resource extensions
- New discoveries

Revised MRE due late 2025

Cautionary Statement

The estimates of mineralisation in respect of the Joaquin Project included in this announcement are foreign estimates and are not reported in accordance with the Australasian Code for Reporting Exploration Results, Mineral Resources and Ore Reserves (2012 JORC Code) and is a "Foreign Estimate". A Competent Person has not yet done sufficient work to classify the Foreign Estimate as Mineral Resources or Ore Reserves in accordance with the 2012 JORC Code. It is uncertain that following evaluation and/or further exploration work that the Foreign Estimates will be able to be reported as mineral resources or ore reserves in accordance with the JORC Code 2012.

Corporate Snapshot



Shares	Options / Performance	Market Capitalisation	Cash
436M	40M	\$87M¹ AUD	\$25.4M² AUD

¹ Market capitalisation at 21 cents AUD per share

² Cash balance as of 31 December 2024

MAJOR SHAREHOLDERS

Austral Gold	5.2%
Eric Sprott	4.8%
Eduardo Elsztain	3.6%
Institutional Ownership	18.0%

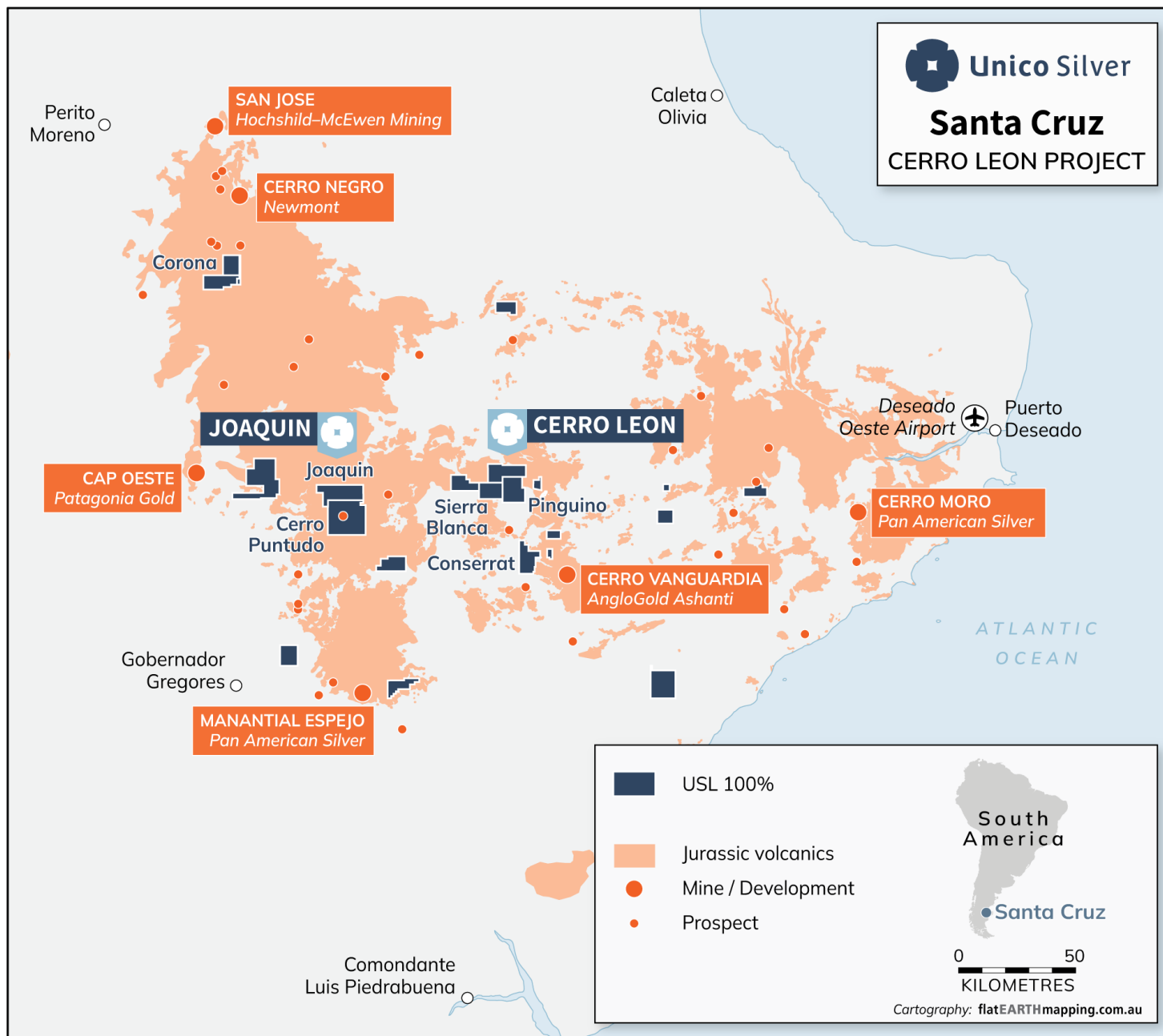
BOARD OF DIRECTORS

Peter Mullens	Chairperson
Todd Williams	Managing Director
Melanie Leydin	Non-Executive Director
José Bordogna	Non-Executive Director



Santa Cruz, Argentina

Home of Majors, clear framework for permitting and building mines



ARGENTINA

- **Pro-investment environment:** RIGI (Incentive Regime for Large Investment) mirrors successful fiscal reforms and stability agreements seen in 1980s Chile
- **Corporate activity:** BHP and Lundin Mining’s C\$4.5B acquisition of Filo Corp and Rio Tinto’s USD\$6.7 billion acquisition of Arcadium Lithium highlights attractiveness for large-scale investment.

SANTA CRUZ

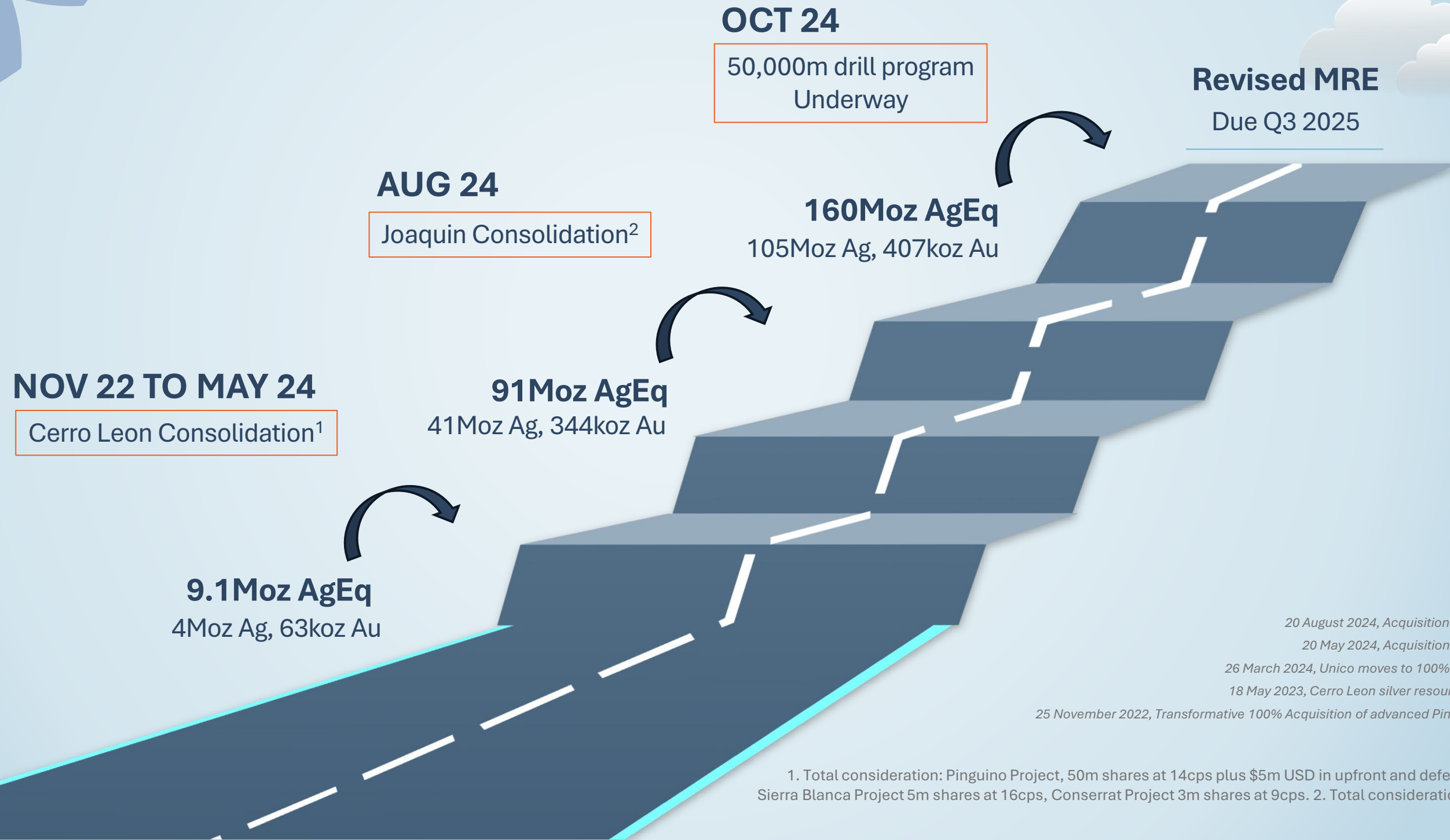
- **Proven hub for major global miners:** Anchored by industry leaders like Newmont, Pan American Silver, and AngloGold Ashanti.
- **Track record of billion-dollar acquisitions:** Majors acquiring development assets like Cerro Negro (USD\$3.4B) and Cerro Moro (C\$414M) reinforces the region's high-value strategic potential.
- **Streamlined permitting process:** A clear, efficient framework for mine development
- **Skilled and ready workforce:** A large talent pool, providing experienced and trained personnel to support project development.

Source:

ASX Announcement, 30 July 2024, Acquisition of Filo and joint venture with Lundin Mining

ASX Announcement, 9 October 2024, Rio Tinto to acquire Arcadium Lithium

Two years of accretive M&A builds the foundations for resource growth and exploration success



Source
 20 August 2024, Acquisition of Joaquin silver district
 20 May 2024, Acquisition of Sierra Blanca project
 26 March 2024, Unico moves to 100% ownership of Conserrat
 18 May 2023, Cerro Leon silver resource grows 84% to 92Moz
 25 November 2022, Transformative 100% Acquisition of advanced Pingüino silver gold project

1. Total consideration: Pinguino Project, 50m shares at 14cps plus \$5m USD in upfront and deferred cash payments, Sierra Blanca Project 5m shares at 16cps, Conserrat Project 3m shares at 9cps. 2. Total consideration: \$2m USD upfront

Strategically located

Building a camp-scale silver opportunity in a world-class precious metal district



Resource Base
160Moz @ 151gpt AgEq
 Ind, Inf
 Includes
105Moz Ag
407koz Au

Two adjacent silver districts never held by a single junior
 5 separate transactions closed since Nov 22, at a cost of:
10c/AgEq oz

Positive Market Comparable
 Coeur Mining acquired 49% of Joaquin for USD \$60m in 2012
 Implied valuation:
\$2.7/AgEq oz

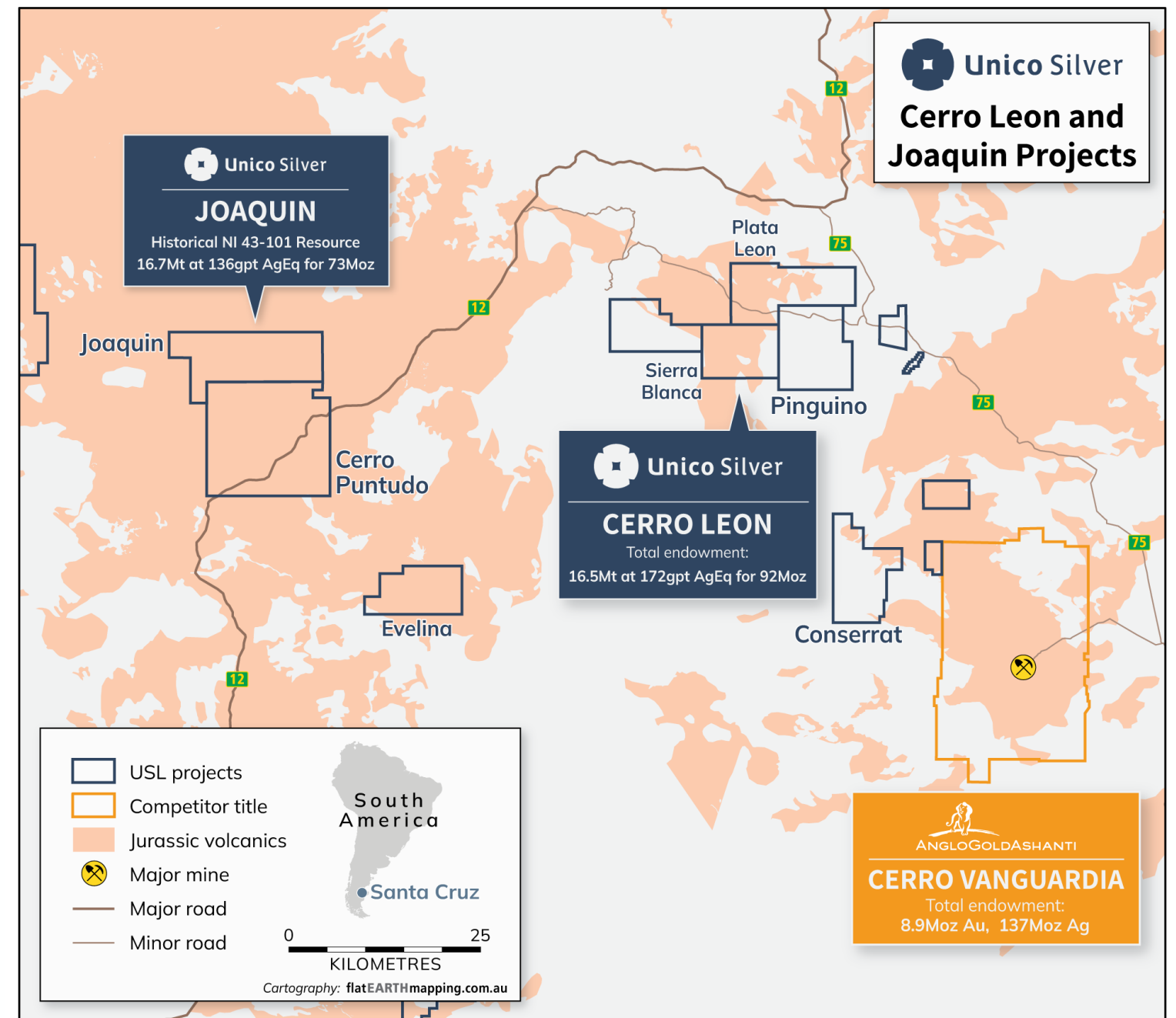
Timeline

Nov 2022
 Mar 2024
 May 2024
 Aug 2024

Thoughtful consolidation of two fragmented silver districts

100% Acquisition of Pinguino district
 Unico moves to 100% ownership of Conserrat district
 100% Acquisition of Sierra Blanca district
 100% Acquisition of Joaquin and Cerro Puntudo

Source:
 ASX Announcement, 25 November 2022, 100% Acquisition of Advanced Pinguino Silver Gold Project
 ASX Announcement, 26 March 2024, Unico Moves to 100% of Conserrat
 ASX Announcement, 20 May 2024, Acquisition of Sierra Blanca Project
 ASX Announcement, 20 August 2024, Acquisition of Joaquin Silver District

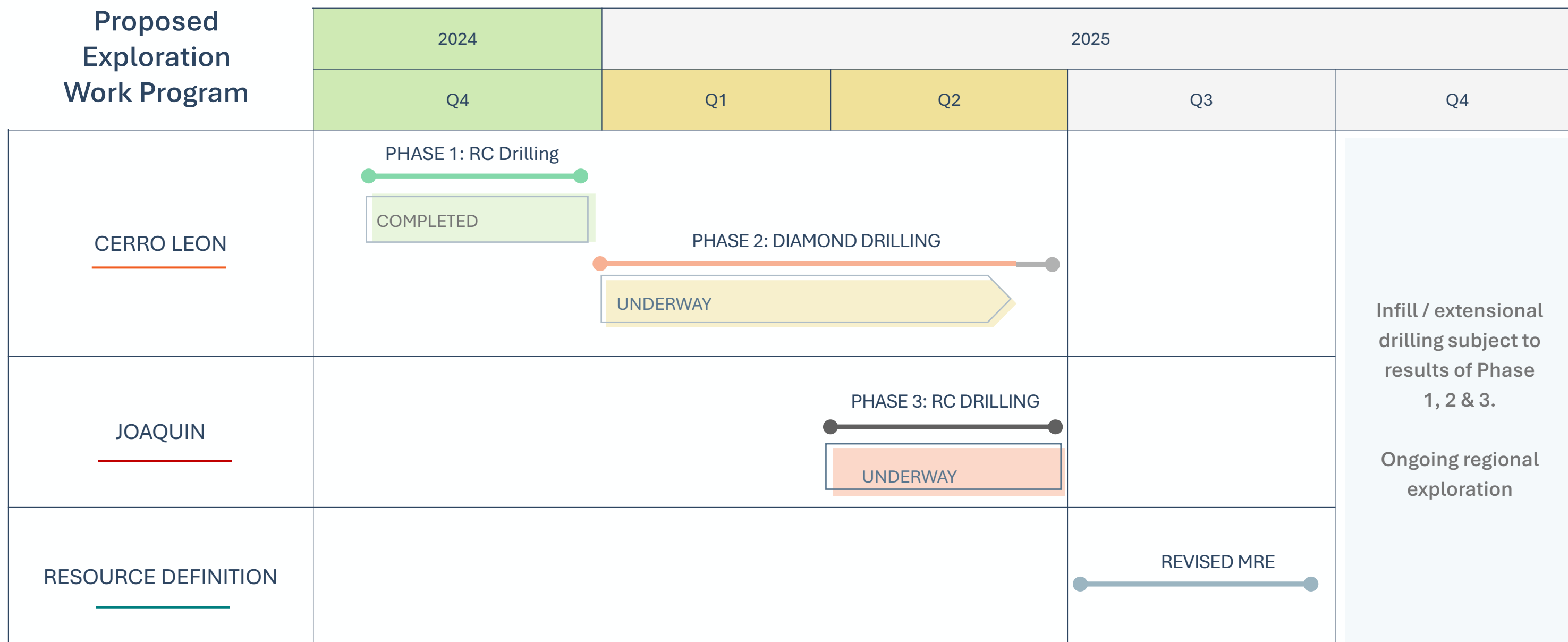


Exploration Priorities

2025 Field Season



Fully funded drill program planned for 2025 - focus on rapid resource growth across Cerro Leon and Joaquin



Targeting revised MRE Q3 2025 followed by further exploration across both projects

Cerro Leon District – Focus on converting exploration target into mineral resources

CERRO LEON EXPLORATION TARGET

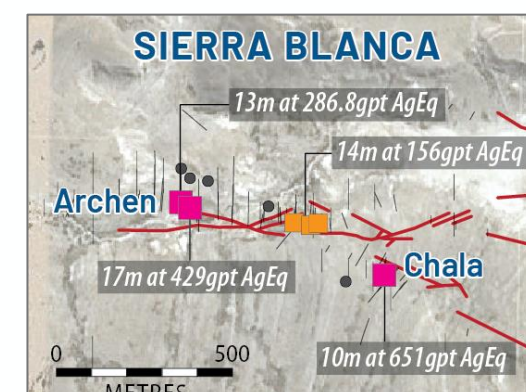
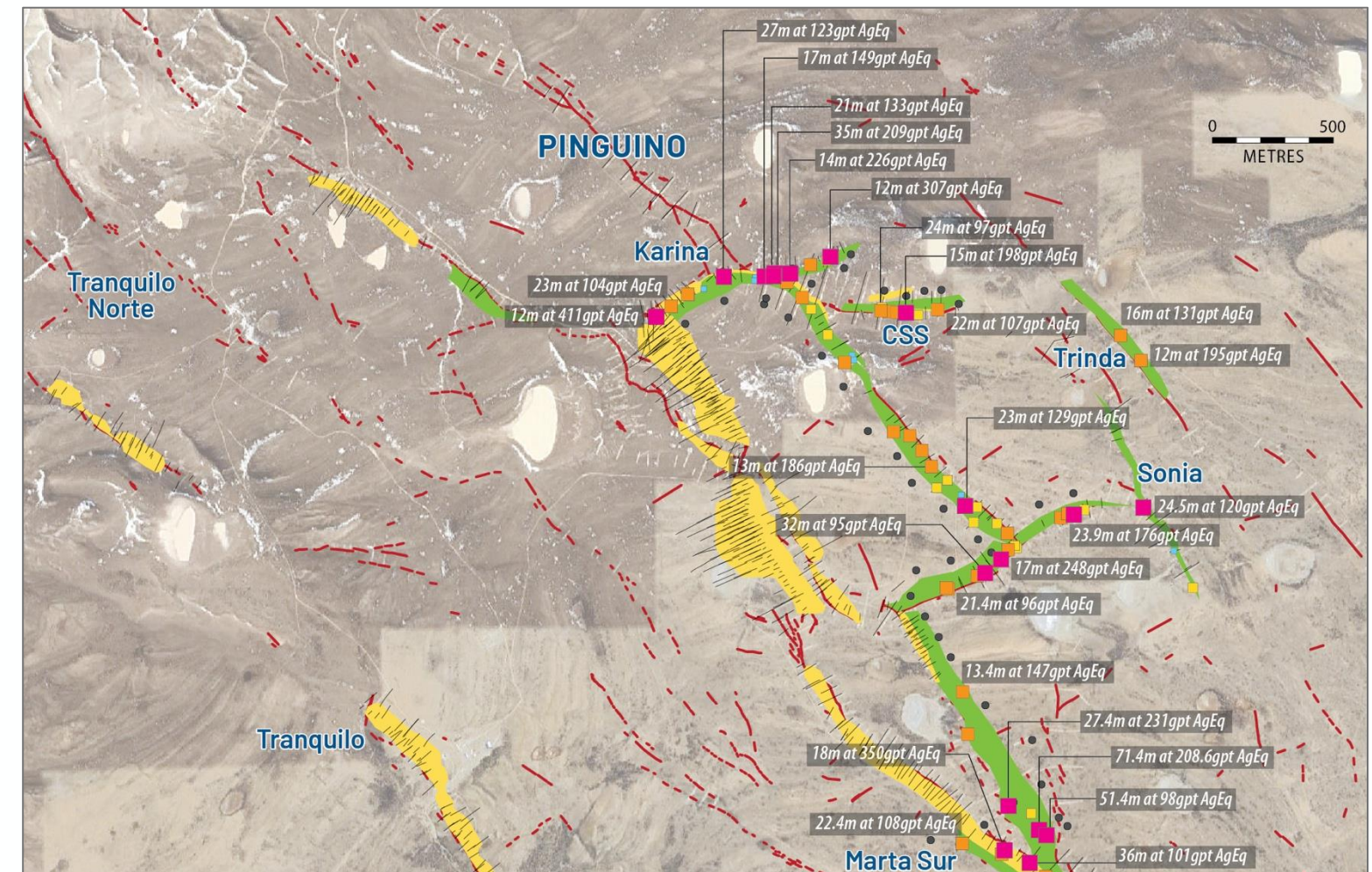
- **Exploration Target** includes six structures (6km cumulative strike) outside current MRE (Karina, CSS, Ivonne Sur, Savary, Trinda, Kasia, Archen-Chala)
- Leverage over 21,000m (213 holes) of historical drilling outside MRE.

ASSAY RESULTS OUTSTANDING

- **Phase 1 RC:** Assay results reported for 56 shallow RC holes totalling 4864m.
- **Phase 2 DDH:** Planned 10,000m program nearing completion. Assay results reported for 9 holes for 1187m.

Cerro Leon follow up infill drill program planned for April 2024

Source:
 ASX Announcement, 13 May 2024, Cerro Leon Exploration Target
 ASX Announcement, 11 December 2024, Cerro Leon Drill Results
 ASX Announcement, 13 January 2024, Cerro Leon Drill Results
 ASX Announcement, 12 March 2025, Cerro Leon drill results



- Project outline
- Gold-silver veins
- Resource
- Exploration target
- 2024 drilling, assays reported
- 2024 drilling, assays pending
- Planned DDH

- Drillhole Intercept (GT)
- >2,501
 - 1,001 - 2,500
 - 501 - 1,000
 - <500



KARINA (REPORTED Q1 2024)

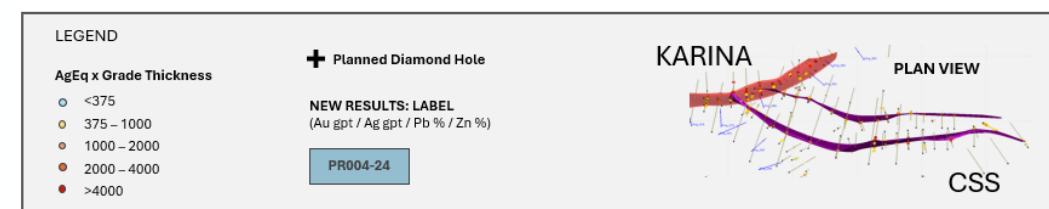
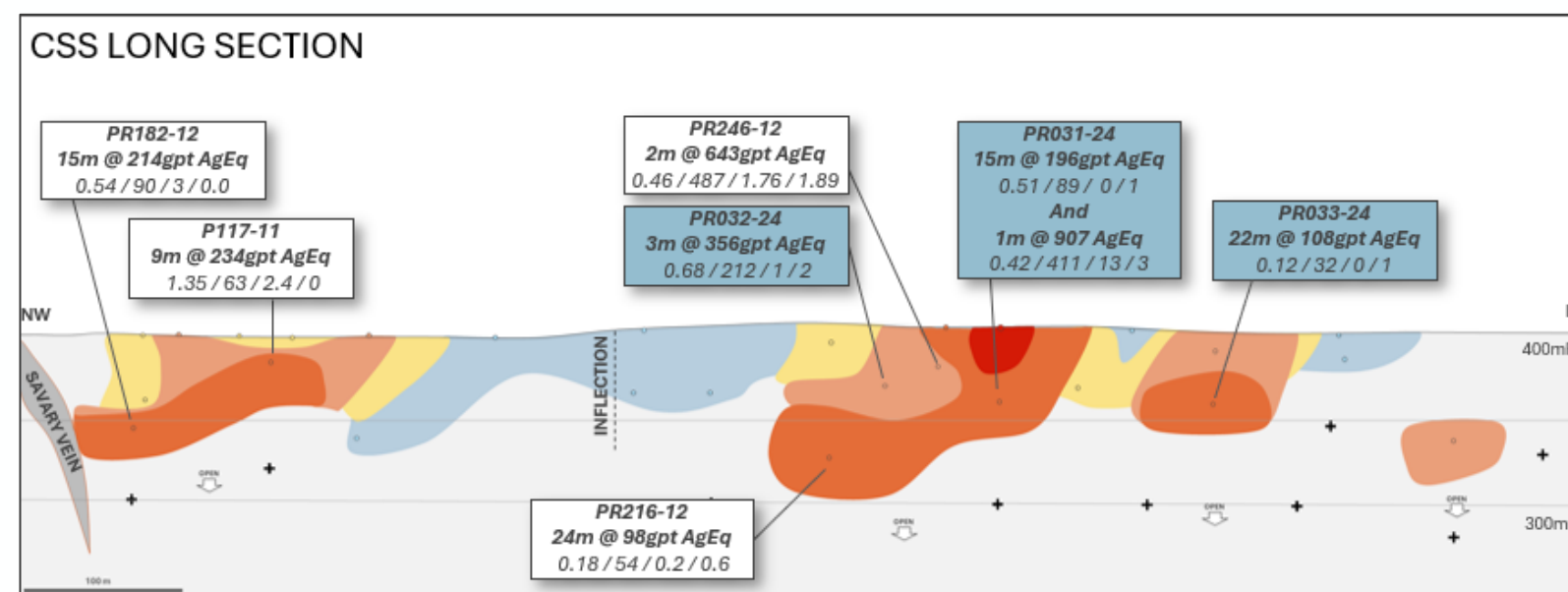
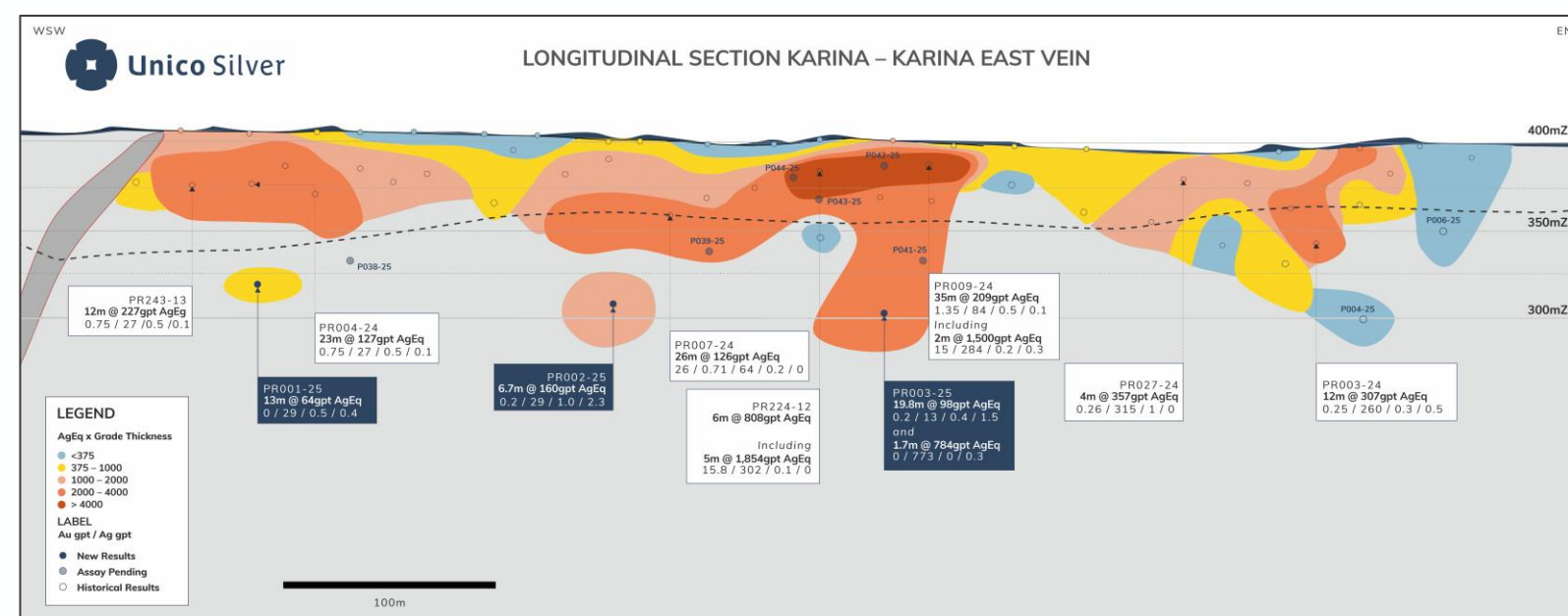
- Delivered silver grades up to 2609pt Ag in individual assays and standout downhole Grade Thickness of 7305 GT.
- Mineralisation spans 900m in strike length and 125m down-dip
 - (PR003-24) 12m at 307gpt AgEq from 49m, inc. 3m at 1052gpt AgEq from 56m
 - (PR005-24) 12m at 411gpt AgEq from 18m, inc. 5m at 828gpt AgEq from 23m
 - (PR009-24) 35m at 209gpt AgEq from 4m, inc. 2m at 1500gpt AgEq from 7m.

CSS (REPORTED Q1 2024)

- Grades increasing at depth, open at depth. Mineralisation extends 850m in strike and 75m down-dip:
 - (PR031-24) 2m at 482gpt AgEq from 42m, and 15m at 198gpt AgEq from 51m
 - (PR033-24) 22m at 107gpt AgEq from 39m

PHASE 2 DRILLING TESTING VERTICAL CONTINUITY OF HIGH-GRADE ZONES

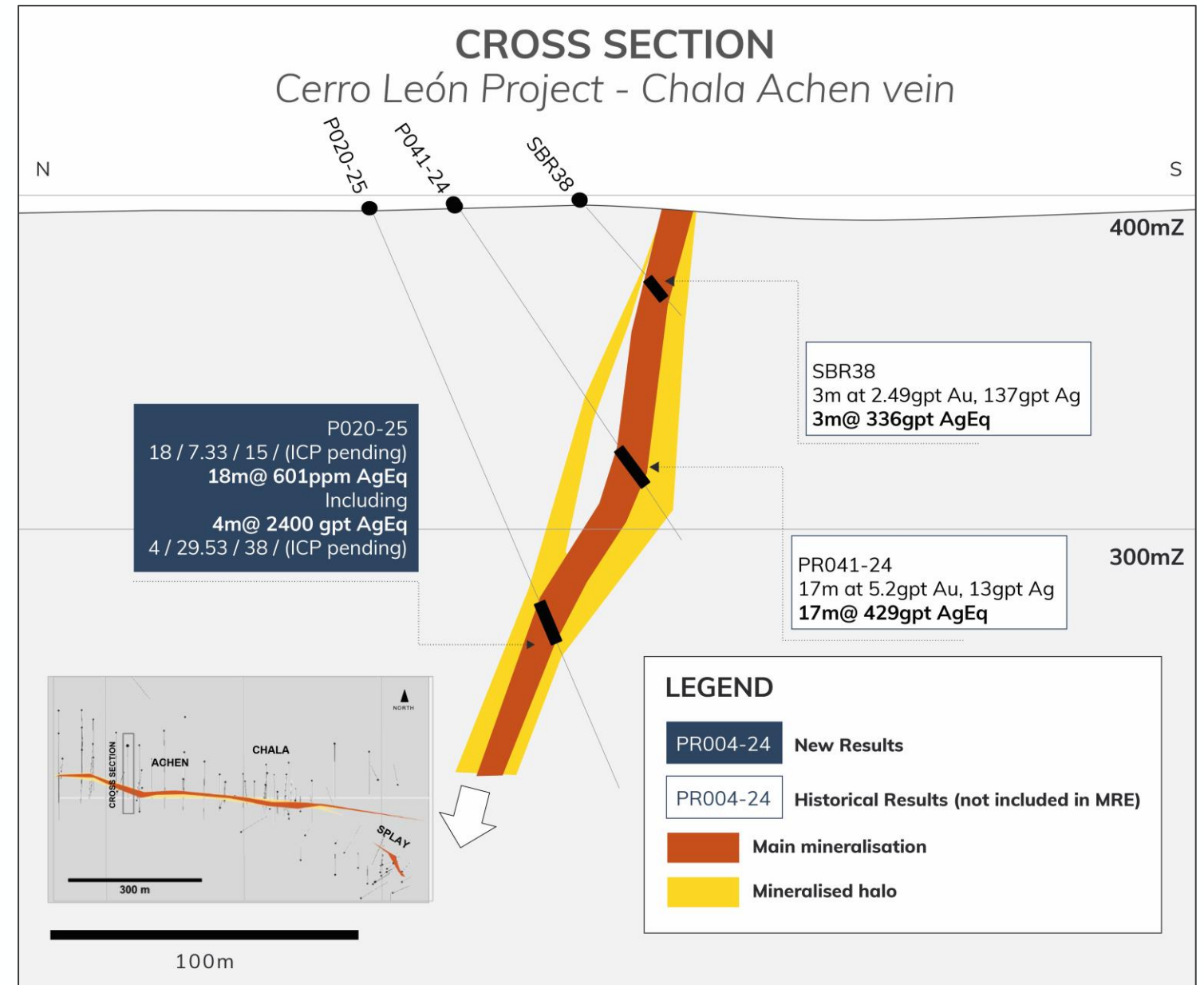
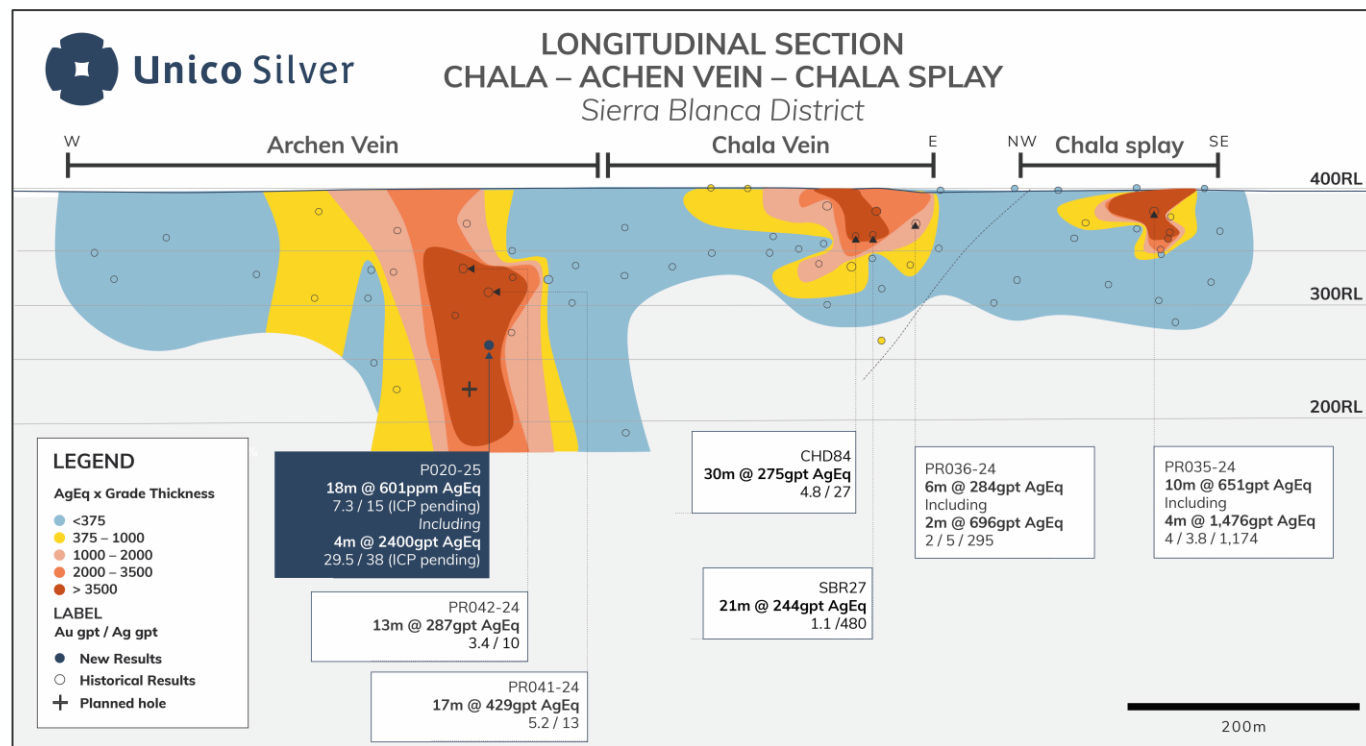
Source:
 ASX Announcement, 13 January 2024, Cerro Leon Drill Results
 ASX Announcement, 12 March 2025, Cerro Leon drill results



Archen and Chala prospects – Developing discoveries outside MRE

ARCHEN-CHALA (REPORTED Q1 2025):

- (PR035-24) **10m at 651gpt AgEq** from 5m, inc. **3m at 1936gpt AgEq** from 7m
- (PR036-24) **6m at 283gpt AgEq** from 37m, inc. **2m at 695gpt AgEq** from 38m
- (PR041-24) **17m at 429gpt AgEq** from 95m, inc. **7m at 767gpt AgEq** from 95m
- (P020-25) **18m at 601gpt AgEq** from 119m, inc. **4m at 2400gpt AgEq** from 136m



Source:

ASX Announcement, 13 January 2024, Cerro Leon Drill Results

ASX Announcement, 12 March 2025, Cerro Leon drill results

Hole P020-25 returned the **highest recorded Grade Thickness intercept of 10,825 GT**

Marta Sur and Ivonne Sur – Focus of current diamond drill program



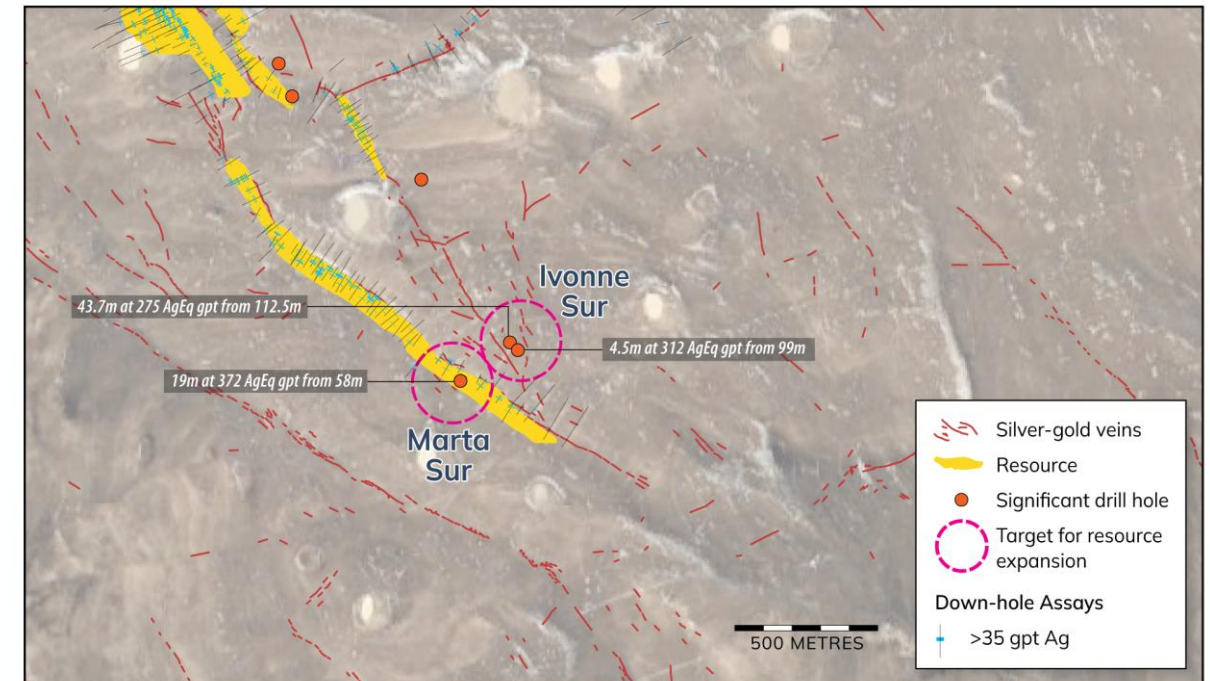
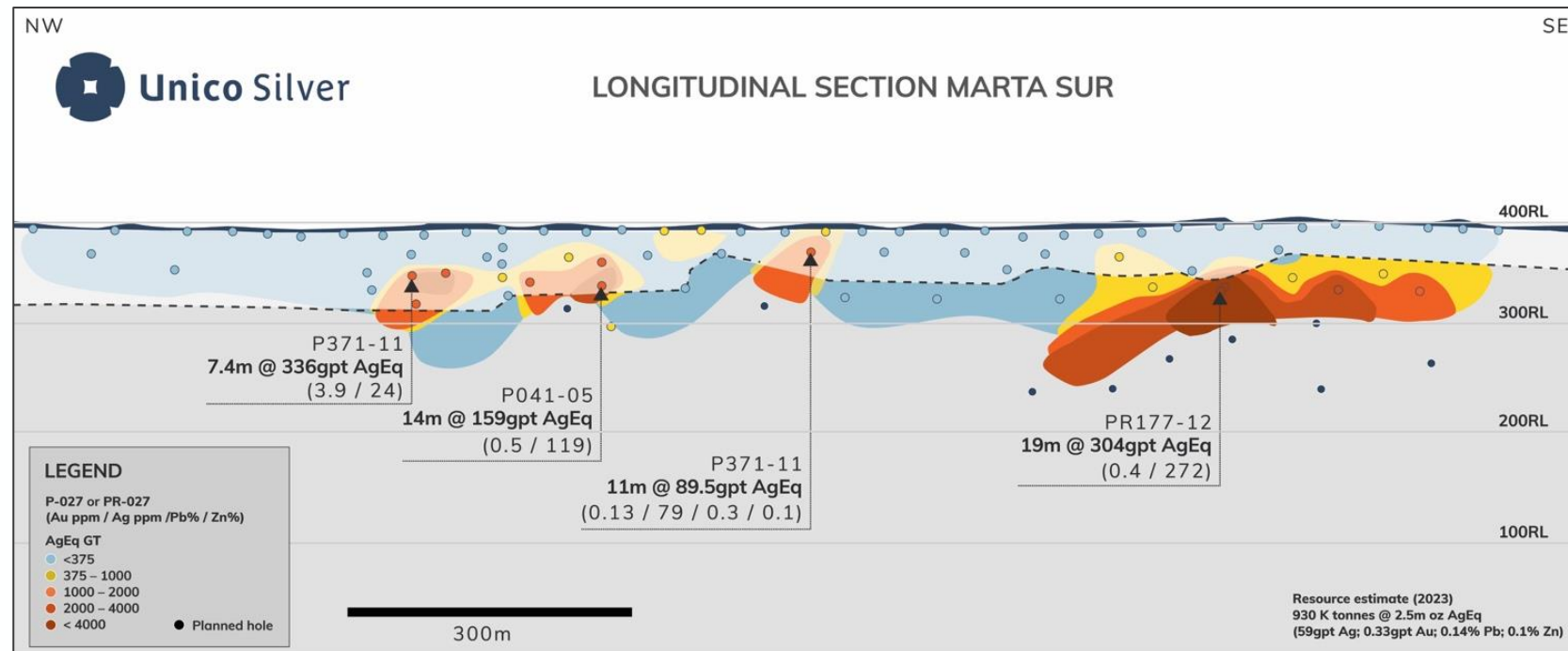
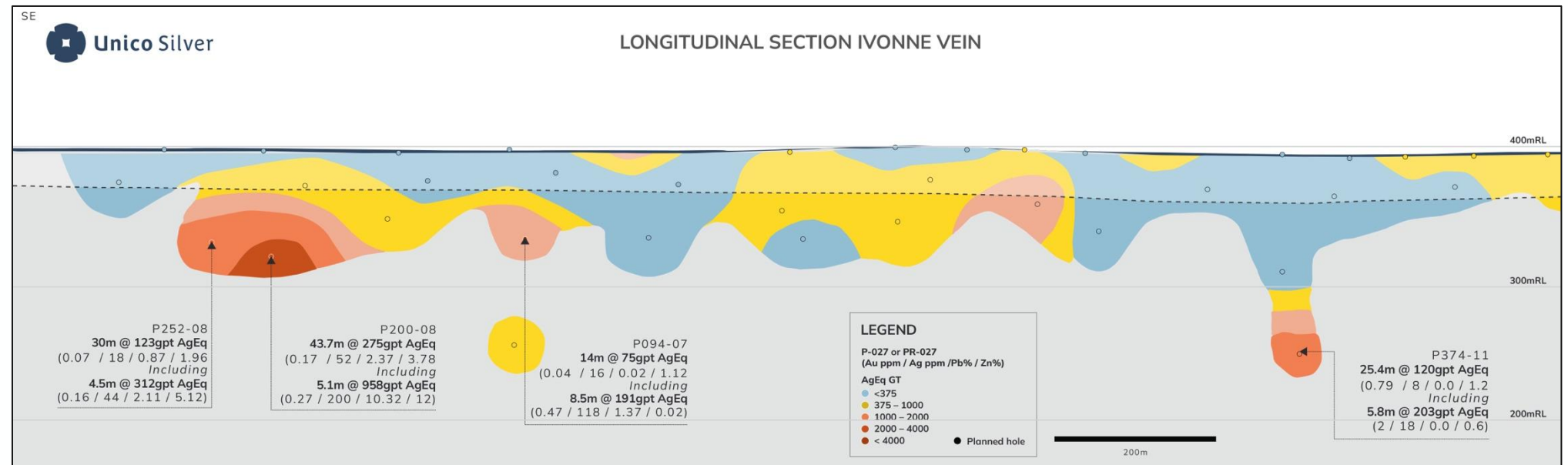
BARREN VEINS PASSING DOWN INTO WIDE MINERALISED ZONES. TARGETING INTERSECTION OF MARTA SUR AND IVONNE SUR VEINS

MARTA SUR

19m at 304 gpt AgEq from 58m (open at depth)

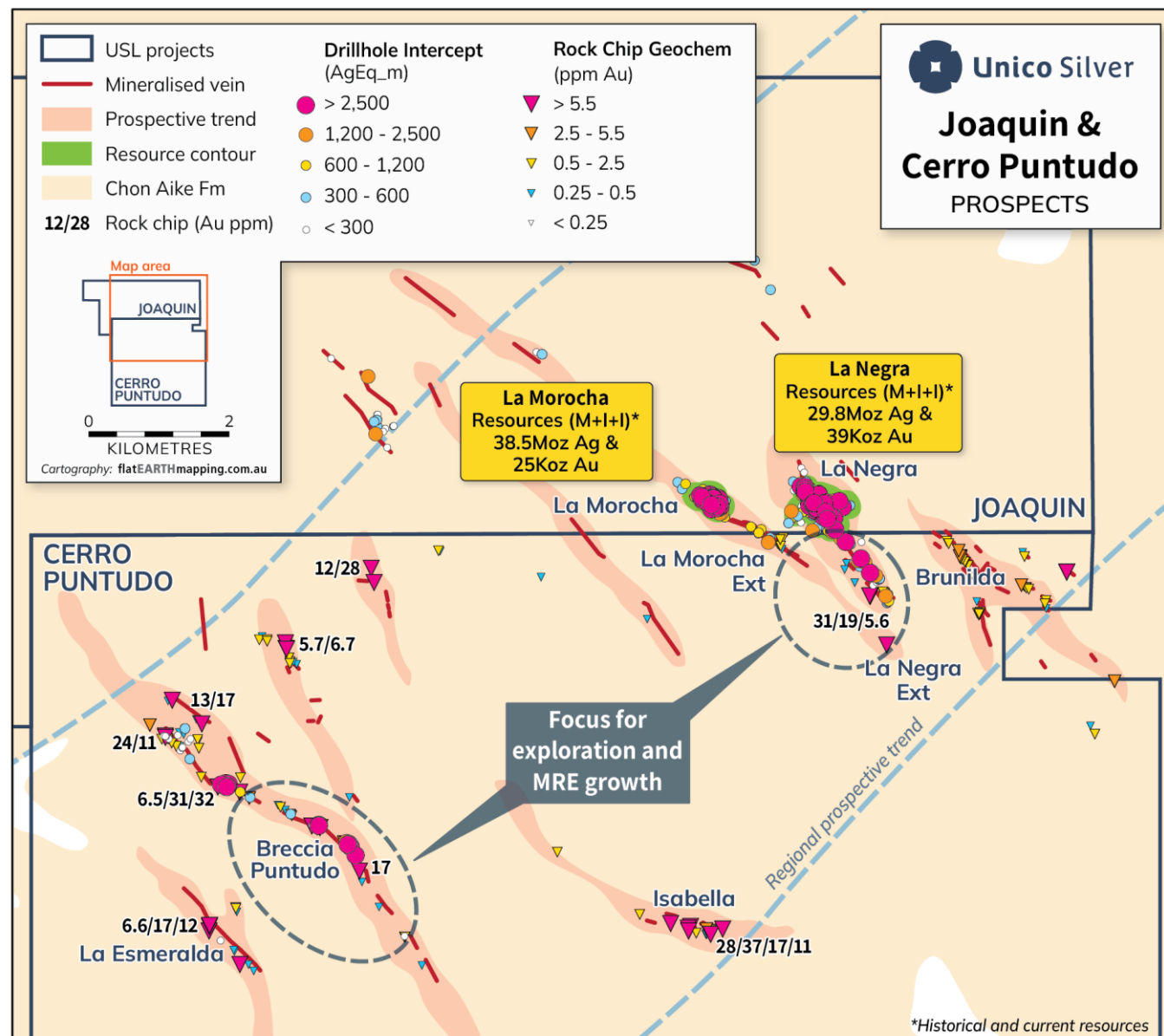
IVONNE SUR

43.7m at 275gpt AgEq from 112m (outside of MRE)



Source:
ASX Announcement, 9 October 2024, Priority Targets Outlined at Cerro Leon

Joaquin Project - Consolidation of a silver district historically divided by a tenement boundary



JOAQUIN AND CERRO PUNTUDO

- Formerly held by Pan American Silver and Yamana prior to the merger of the two companies in March 2023. Acquired by USL Oct 2024.
- Historical Foreign Estimate of **73Moz AgEq*** with clear potential to grow through expanding drilling into adjacent Cerro Puntudo.

MAIDEN DRILL PROGRAM TO COMMENCE AT JOAQUIN

10,000m drill program underway (combined RC and diamond drilling)
Drilling to target the extension of La Morocha and La Negra deposits, the Breccia Puntudo structures, and regional targets.

- La Negra Feeder: **4.5m at 1699gpt Ag, 22gpt Au** from 272m.
- La Negra Extension: **3m at 2723gpt Ag, 4.1gpt Au** from 54m.
- La Morocha Extension: **8m at 226gpt Ag, 0.5gpt Au** from 189m.
- Breccia Puntudo: **31m at 28gpt Ag, 3.3gpt Au** from 66m.

Program includes select infill drilling to assist conversion of NI-43 101 foreign estimates to JORC (2012) compliant resources.

Source:

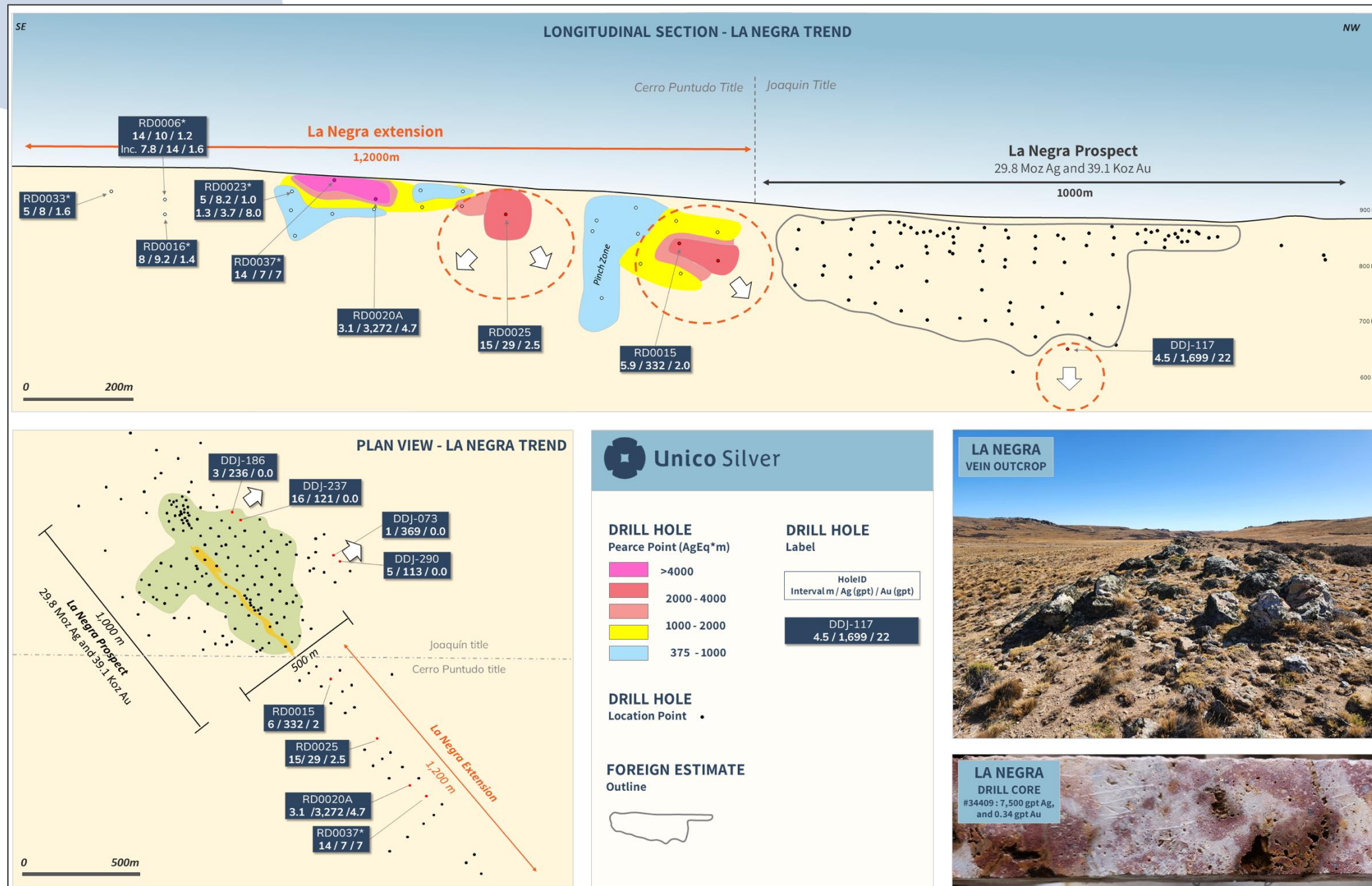
ASX Announcement, 20 August 2024, Acquisition of Joaquin Silver District

ASX Announcement, 17 March 2024, Drill commences at Joaquin

* See Appendix A

Joaquin district – Options for immediate resource growth

La Negra Extensions and Feeder Structure



Potential for high-grade mineralisation beneath existing resource.

Hole DDJ-117 intercepted a strongly oxidised structure 225m below the surface that returned:

LA NEGRA FEEDER:

4.5m at 1699g/t Ag, 22g/t Au from 272m.

Significant potential to expand resources along strike and SE of La Negra.

LA NEGRA EXTENSION:

- 13m at 338gpt Ag from 55.5m.
- 3m at 695gpt Ag, 0.6gpt Au from 136m.
- 30m at 37gpt Ag, 1.7gpt Au from 51m.
- 4m at 7gpt Ag, 7gpt Au from 16m. (possible parallel vein).

Source:
ASX Announcement, 20 August 2024, Acquisition of Joaquin Silver District

Investment Highlights

On our way to 300Moz in Santa Cruz, Argentina



Significant Resource Base
Acquired Cost-effectively



160Moz AgEq resource base*
and growing

Upcoming Catalysts



Fully funded 50,000m drill program

Silver Price Tailwinds



Rising industrial and renewables
demand, supply constraints.

Mineralisation



Potential to be ASX's most silver
dominant resource

Infrastructure-
advantaged Region



Surrounded by major miners
(Newmont, Pan American Silver,
AngloGold Ashanti)

Argentina's Improved
Political Environment



Pro-mining policies and streamlined
regulations, encouraging mining
investment and development

*See Appendix A and Appendix B

Appendix A: Disclosure of Foreign Estimate



Table 1: Joaquin Project – Foreign Estimate as of February 2013

Resource Category	Tonnes (Mt)	Ag (gpt)	Au (gpt)	Ag (Moz)	Au (Koz)	AgEq (gpt)	AgEq (Moz)
M&I	15.7	128	0.12	65.2	61.1	138	70.1
Inferred	1	100	0.12	3.1	3.7	110	3.3
Total	16.7	126	0.12	68.3	64.2	136	73.4

The estimates of mineralisation in respect of the Joaquin Project included in this announcement are foreign estimates and are not reported in accordance with the Australasian Code for Reporting Exploration Results, Mineral Resources and Ore Reserves (2012 JORC Code) and is a “Foreign Estimate”. Unico Silver confirms that it is not aware of any new information or data that materially affects the information included in the Foreign Estimate and that all material assumptions and technical parameters underpinning the estimates continue to apply and have not materially changed. Unico Silver confirms that the form and context in which the Competent Person’s findings are presented have not been materially modified from the announcement. A Competent Person has not yet done sufficient work to classify the Foreign Estimate as Mineral Resources or Ore Reserves in accordance with the 2012 JORC Code. It is uncertain that following evaluation and/or further exploration work that the Foreign Estimates will be able to be reported as mineral resources or ore reserves in accordance with the JORC Code 2012. Joaquin’s reported silver equivalent (AgEq) is based on the following assumptions: $AgEq = Ag (g/t) + 79.18 \times Au (g/t)$ where: silver price is \$23.5/oz and recovery is 95%, gold price is \$1964/oz and recovery is 90%. In the Company’s opinion, the silver and gold included in the metal equivalent calculations have a reasonable potential to be recovered and sold.

Table 2: Joaquin Project – Historical Production 2019 to 2022

Resource Category	Tonnes (Mt)	Ag (gpt)	Au (gpt)	Ag (Moz)	Au (Koz)	AgEq (gpt)	AgEq (Moz)
Depletion	0.33	410	0.14	4.3	1.5	421	4.5
Total	0.33	410	0.14	4.3	1.5	421	4.5

Historical production figures from Pan American Silver Corp. internal reconciliation reports

Appendix B: Cerro Leon Mineral Resource Statement



Table 3: Cerro Leon Resources – Classification

Category	Tonnes	AgEq (gpt)	AgEq (Moz)	Ag (g/t)	Au (g/t)	Pb (%)	Zn (%)	Ag Moz	Au koz	Pb Mlb	Zn Mlb
Indicated	6.82	172	37.8	86	0.49	0.28	0.93	18.8	107	41.9	140
Inferred	9.65	172	53.5	71	0.77	0.77	0.77	22.1	237	53.7	163
Total	16.47	172	91.3	77	0.65	0.57	0.84	40.9	344	95.6	304

The preceding statements of Mineral Resources conforms to the Australasian Code for Reporting of Exploration Results, Mineral Resources and Ore Reserves (JORC Code) 2012 Edition. The information in this announcement that relates to the current Mineral Resources for Cerro Leon has been extracted from the ASX release by Unico Silver entitled “Cerro Leon Resource Grows 84% to 92Moz” dated 18 May 2023, available at www.unicosilver.com.au and www.asx.com.au (“Unico Silver Announcement”). Unico Silver confirms that it is not aware of any new information or data that materially affects the information included in the Unico Silver Announcement in relation to estimates of Mineral Resources and that all material assumptions and technical parameters underpinning the estimates continue to apply and have not materially changed. Unico Silver confirms that the form and context in which the Competent Person’s findings are presented have not been materially modified from the announcement. Due to rounding to appropriate significant figures minor discrepancies may occur. Lead and Zinc credits are only considered for the Marta Centro prospect, all other prospects the Pb and Zn are attributed no economic value. Cerro Leon’s reported silver equivalent (AgEq) is consistent with previous reports and is based on the following assumptions: $AgEq = Ag (g/t) + 79.18 \times Au (g/t) + 25.56 \times Pb (\%) + 39.41 \times Zn (\%)$, where: silver price is \$23.5/oz and recovery is 95%, gold price is \$1964/oz and recovery is 90%, lead price is \$0.95/lb and recovery is 87.6% and zinc price is \$1.39/lb and recovery is 92.3%. In the Company’s opinion, the silver, gold, zinc, lead included in the metal equivalent calculations have a reasonable potential to be recovered and sold.