



**ECT**

ENVIRONMENTAL CLEAN  
TECHNOLOGIES LIMITED

# AGM Presentation

**COLDry** Fertiliser Project

21 October 2024

# Disclaimer

Environmental Clean Technologies Limited (“ECT” or “the Company” ) has taken all reasonable care in compiling and producing the information contained in this presentation. The Company will not be responsible for any loss or damage arising from the use of the information contained in this presentation. The information provided should not be used as a substitute for seeking independent professional advice in making an investment decision involving Environmental Clean Technologies Limited. Environmental Clean Technologies Limited makes no representation or warranty, express or implied, as to the accuracy, reliability, or completeness of the information provided. Environmental Clean Technologies Limited and its respective directors, employees, agents and consultants shall have no liability (including liability to any person by reason of negligence or negligent misstatement) for any statements, opinions, information, or matters, express or implied, arising out of, contained in or derived from, or any omissions from this presentation.

This presentation contains "forward-looking statements" which involve known and unknown risks, uncertainties and other factors which may cause the actual results, performance or achievements of ECT, industry results or general economic conditions to be materially different from any future results, performance or achievements expressed or implied by such forward-looking statements. In particular, certain forward-looking statements contained in this material reflect the current expectations of management of the Company regarding, among other things: (i) our future growth, results of operations, performance and business prospects and opportunities; (ii) expectations regarding the size of the market and installed capacity of our plants; (iii) expectations regarding market prices and costs; and (iv) expectations regarding market trends in relation to certain relevant commodities, including benchmark thermal coal and metallurgical coal prices and foreign currency exchange rates.

Forward-looking statements are only predictions and are not guarantees of performance. Wherever possible, words such as “may,” “would,” “could,” “will,” “anticipate,” “believe,” “plan,” “expect,” “intend,” “estimate,” “aim,” “endeavour” and similar expressions have been used to identify these forward-looking statements. These statements reflect the Corporation's current expectations regarding future events and operating performance and speak only as of the date of this material. Forward looking statements involve significant known and unknown risks, uncertainties, assumptions and other factors that could cause our actual results, performance or achievements to be materially different from any future trends, results, performance or achievements that may be expressed or implied by the forward looking statements, including, without limitation, changes in commodity prices and costs of materials, changes in interest and currency exchange rates, inaccurate geological and coal quality assumptions (including with respect to size, physical and chemical characteristics, and recoverability of reserves and resources), unanticipated operational difficulties (including failure of plant, equipment or processes to operate in accordance with specifications or expectations, cost escalation, unavailability of materials and equipment, delays in the receipt of government and other required approvals, and environmental matters), political risk and social unrest, and changes in general economic conditions or conditions in the financial markets or the world coal, iron and steel industries.

The materiality of these risks and uncertainties may increase correspondingly as a forward-looking statement speaks to expectations further in time. Although the forward-looking statements contained in this material are based upon what the Company believes to be reasonable assumptions, the Company cannot assure investors that actual results will be consistent with these forward-looking statements. These forward-looking statements are made as of the date of this material and are expressly qualified in their entirety by this cautionary statement. We do not intend, and do not assume any obligation, to update or revise these forward-looking statements, unless otherwise required by law. Prospective purchasers are cautioned not to place undue reliance on forward-looking statements. This presentation is for information purposes only and does not constitute an offer to sell or a solicitation to buy the securities referred to herein.

# Current Project

Bacchus Marsh

## Agriculture

- **COLDry**
- Lignite-nitrogen fertiliser

\$

# Future Opportunities

## Industry

- Hydro**MOR**
- Low emission steelmaking

\$ \$

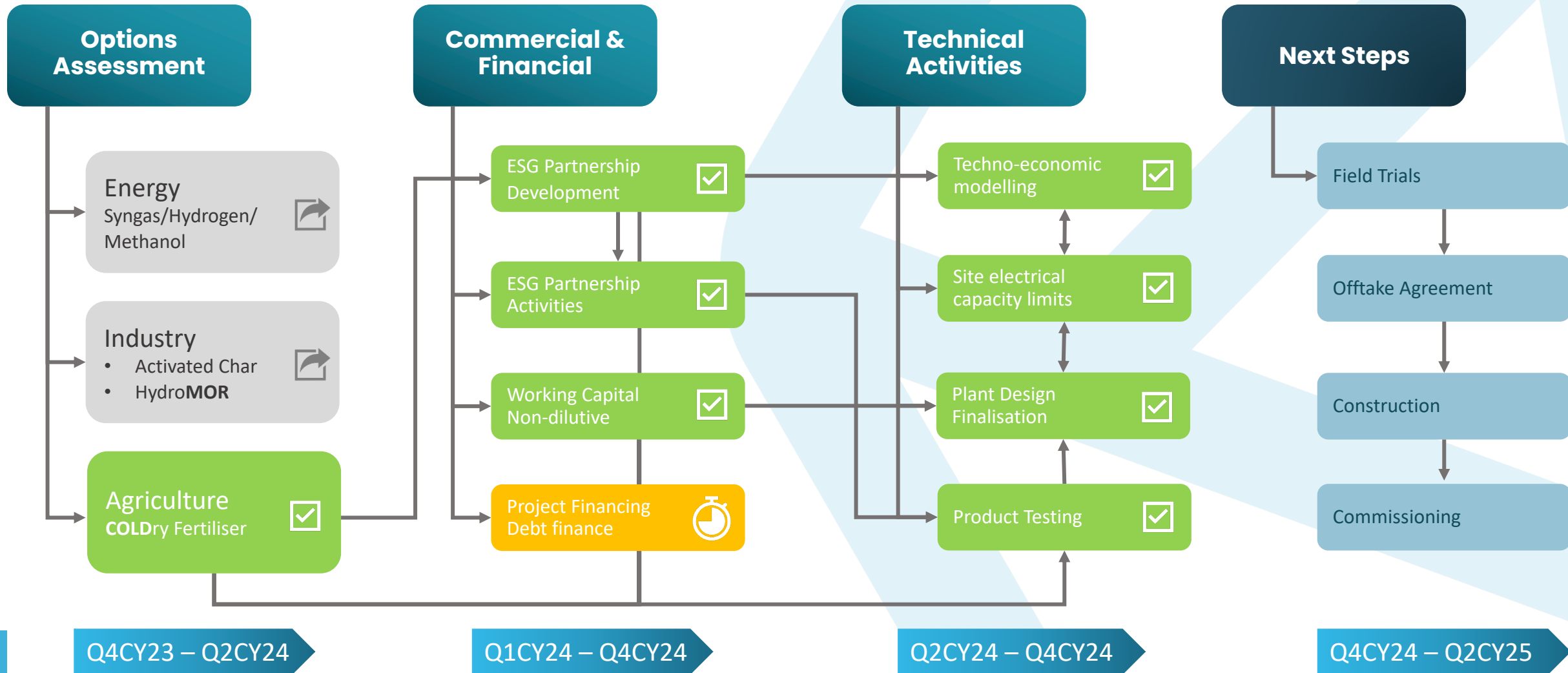
## Energy

- **COLDry** Hydrogen
- Net-negative hydrogen production

\$ \$ \$

# Project Options: Race to Revenue

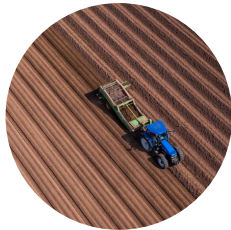
*Evaluation of four potential projects*



# COLDry Fertiliser Value Proposition

*Leveraging alternative inputs*

Conventional Nitrogen Fertiliser: \$8.5Bn Australian Market<sup>1</sup>

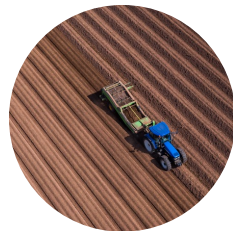


**30–50% Loss**  
Inefficient & Expensive<sup>2</sup>

**Environmental Emissions**  
Atmospheric & Aquatic



COLDry: Lignite–Nitrogen Fertiliser<sup>2</sup>



*50% LESS urea*

**EFFICIENT**

**64% LOWER**  
NOx emissions

**73% LOWER**  
Ammonia Loss

**59% LESS**  
Nitrogen Leaching

**EFFECTIVE**

**59% HIGHER**  
Plant Recovery of N

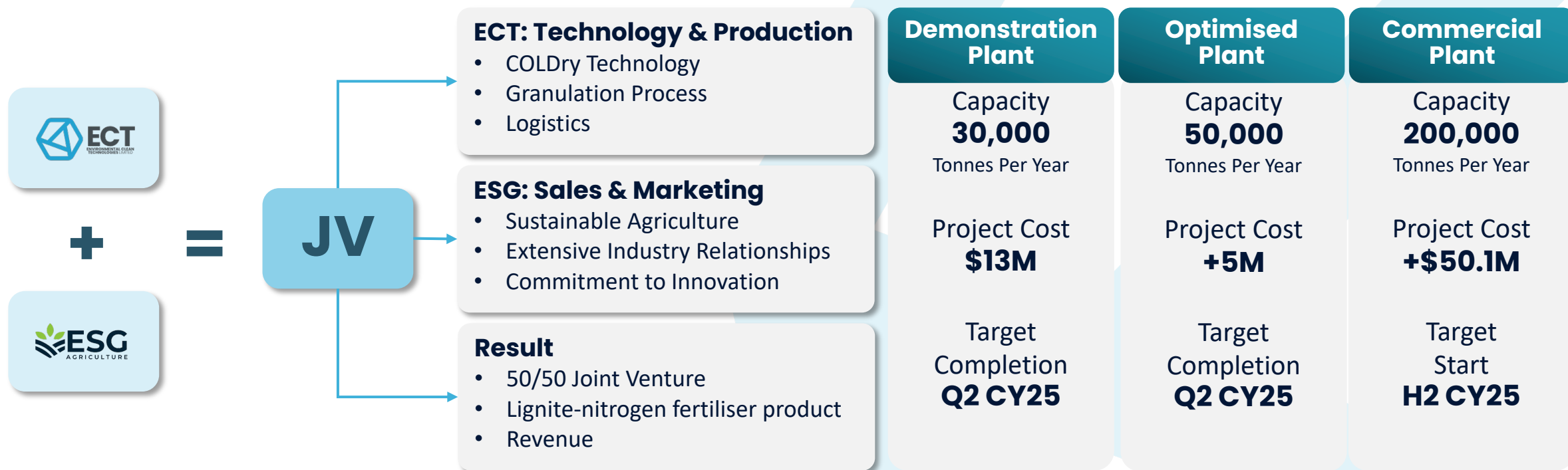
**21% HIGHER**  
Nitrogen Uptake

**50% LOWER**  
Emissions

**23%  
HIGHER  
CROP YIELD**



# Leveraging Expertise: JV with ESG Agriculture



## Schedule



# Steel Industry Challenge



Share of  
global  
emissions  
**8%**



Carbon  
Intensity  
**1.8–3.8t**  
tonnes CO<sub>2</sub> per tonne of  
steel (average)



**Hard to  
Decarbonise**



High-temperature.  
Carbon-intensive.



**Green Steel  
Premium  
+\$150**  
per tonne

# HydroMOR Solution

**LOW EMISSION**  
**1.3t**

**LOWER CAPEX**  
**0.64x**

64% of a Blast Furnace

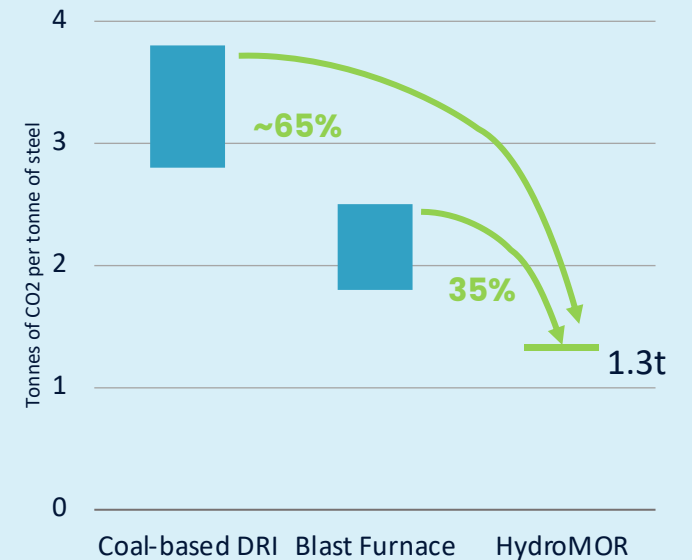
**HIGHER ROI**  
**1.62x**

62% higher than a  
Blast Furnace

## Emissions Advantage

- ~35% lower than a blast furnace
- ~65% lower than coal-based DRI

## Steel Making CO<sub>2</sub> Intensity



# COLDry: Net-negative Hydrogen



**CO<sub>2</sub>  
Benefit**

**REDUCTION**  
**-39.9kg**  
CO<sub>2</sub>/kg H<sub>2</sub>  
Net-negative without the  
need for CCS



**CAPEX**  
**0.5x**



**OPEX**  
**0.17x**

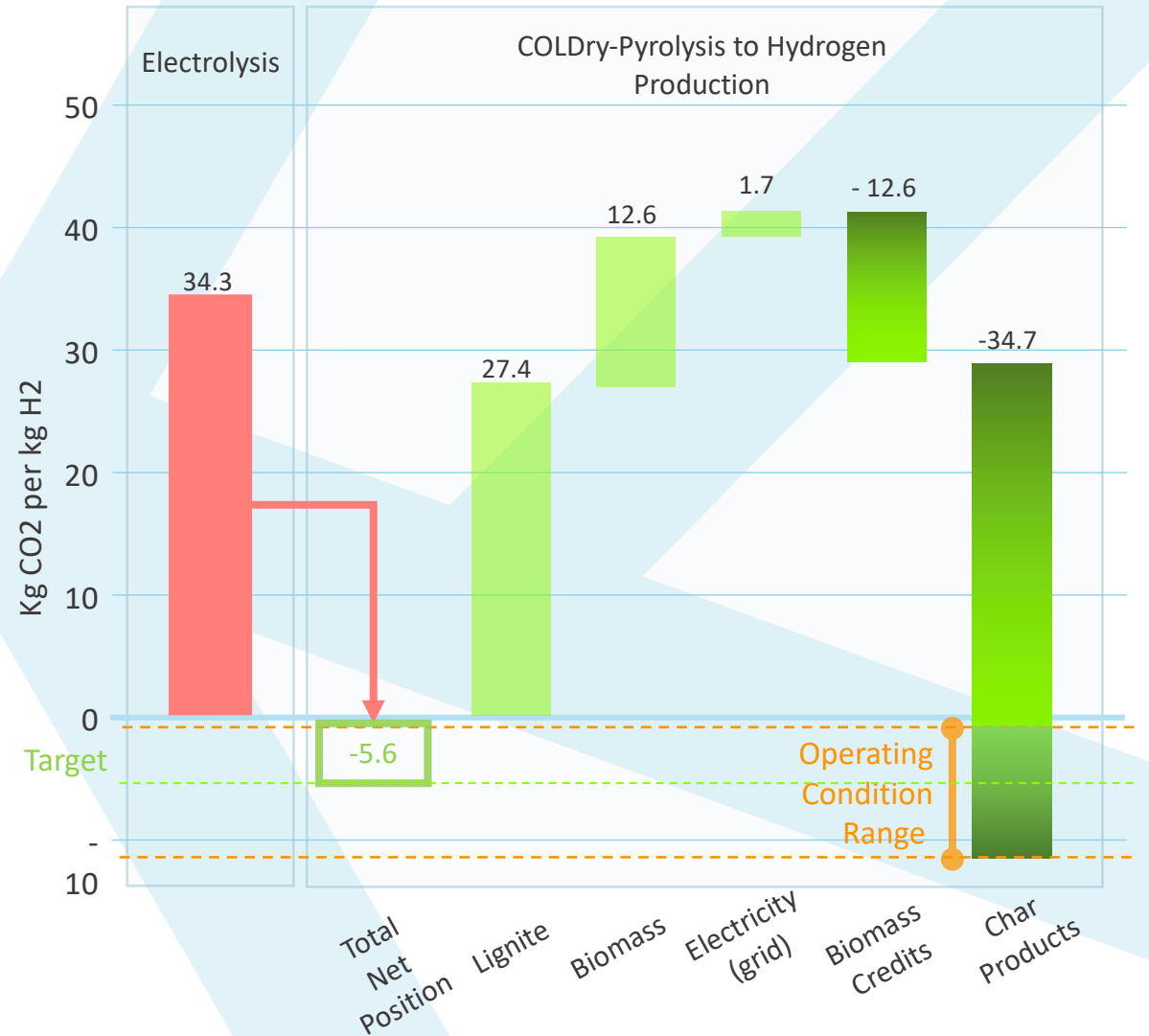


**SUSEX**  
**0.5x**



**COST**  
**0.23x**

## CO<sub>2</sub> Comparison – 100MW Hydrogen Equivalent





# ECT COLDry Investment Rationale

We are in the right the place at the right time to meet today's challenges and offer investors a low-tech risk, low development risk, low capex, highly scalable, near-term breakeven investment opportunity to participate in a major energy transition theme where governments and large industry players are desperate to find solutions.



Immediate



Net Zero



Environmental  
Solution



Low Capital  
Investment



Undervalued  
Share Price



Attractive  
Returns



Growth  
Opportunities



**ECT**

ENVIRONMENTAL CLEAN  
TECHNOLOGIES LIMITED

**Thank you.**