



Naltagua Copper District

CHILE

April 2013



Cash and liquid assets.....



Ordinary Shares: 246.7M

Options: 4.46M

- 0.46M @ 30 cents, expiring 31 Oct 2013
- 4.0M @ 7.5 to 25 cents, expiring 13 Nov 2015

Share Price: 7 cents

Market Capitalisation: \$17.3M


Cash and Saleable Assets*: \$6M

Top 20 Shareholders: 58%

ASX Code: EQE

* Cash, listed shares, gold royalty, oil rig.

Top 10 (March 2013).....



Augusta Enterprises Pty Ltd	34,619,471	14.03%
Permgold Pty Ltd	30,377,420	12.31%
J P Morgan Nominees (Aust) Ltd	21,845,917	8.85%
HSBC Custody Nominees	14,507,986	5.88%
Tetramin Pty Ltd	8,000,000	3.24%
J Wardman & Associates Pty Ltd	4,600,000	1.86%
Wisevest Pty Ltd	4,000,000	1.62%
Integral Admin Services Pty Ltd	2,590,616	1.05%
National Nominees Limited	2,350,710	0.95%
Tendeka Holdings Pty Ltd	2,300,000	0.93%
<hr/>		
TOTAL (Top 10)		50.72%

Experience and Diversity....

Equus Directors



Norm Seckold
Chairman and Non-Executive Director



Ted Leschke
Managing Director



Robert Perring
Executive Director



Juerg Walker
Non-Executive Director



Colin Carson
Non-Executive Director



Marcelo Mora
Company Secretary

Dynamic crew in Chile.....



Damien Koerber
Exploration Manager – South America



Pablo Salas
Project Geologist - Chile



Cristian Quintana
Logistics Manager - Chile



Robert Perring
Consultant Geologist



Lorenzo Araya and the Naltagua
Field Crew

Positioned for rapid capital growth...



Targeting* 60Mt to 80Mt at 0.8% to 1.3% Cu

- Located in one of the main copper producing belts of Chile
- Close to infrastructure (75km from port of San Antonio)
- Mining Leases (18.05km²)
- Option to Purchase (exercisable Sept 2015 - \$3.8M)
- Historical Mining Centre (1905 to 1945)
- 75% of a large, manto-type Cu-Ag system (4km by 2km)
- Drill-ready targets (only one previous exploration drill hole)
- Excellent metallurgy (41% Cu, 463g/t Ag in concentrate)

* The target size is conceptual in nature and should not be construed to indicate a JORC Code compliant mineral resource.

Located in the productive Coastal Belt.....

Principal Copper Deposits

- Manto-type and Iron Oxide-type
- Porphyry-type
- ▲ Porphyry-type + high sulphidation overprint

Principal Gold Deposits

- ▲ High sulphidation-type
- ▲ Low sulphidation-type
- Porphyry-type

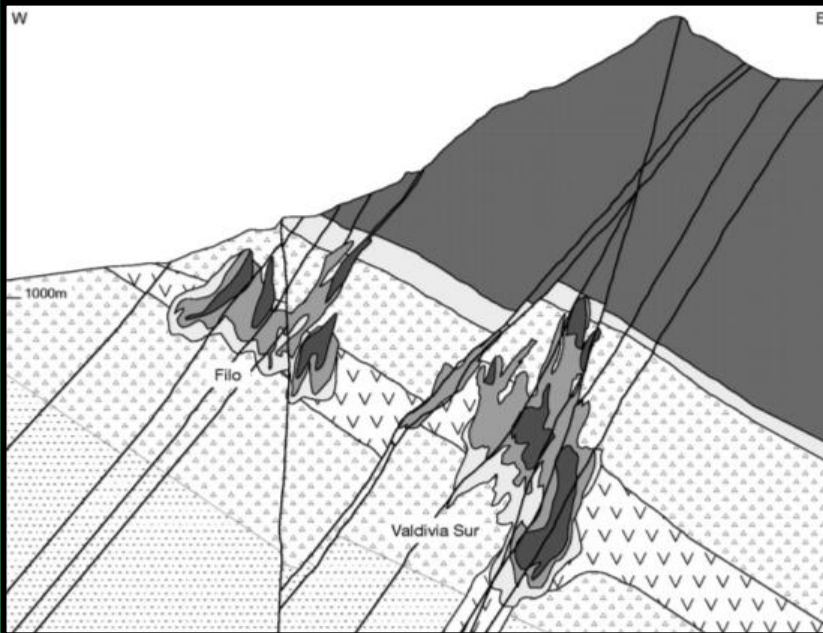
Metallogenic Belts

- Middle Miocene – Early Pliocene
- Early – Middle Miocene
- Late Eocene – Early Oligocene
- Palaeocene – Early Eocene
- Early Cretaceous



* The target size is conceptual in nature and should not be construed to indicate a JORC Code compliant mineral resource.

Identical deposit-type to the north.....



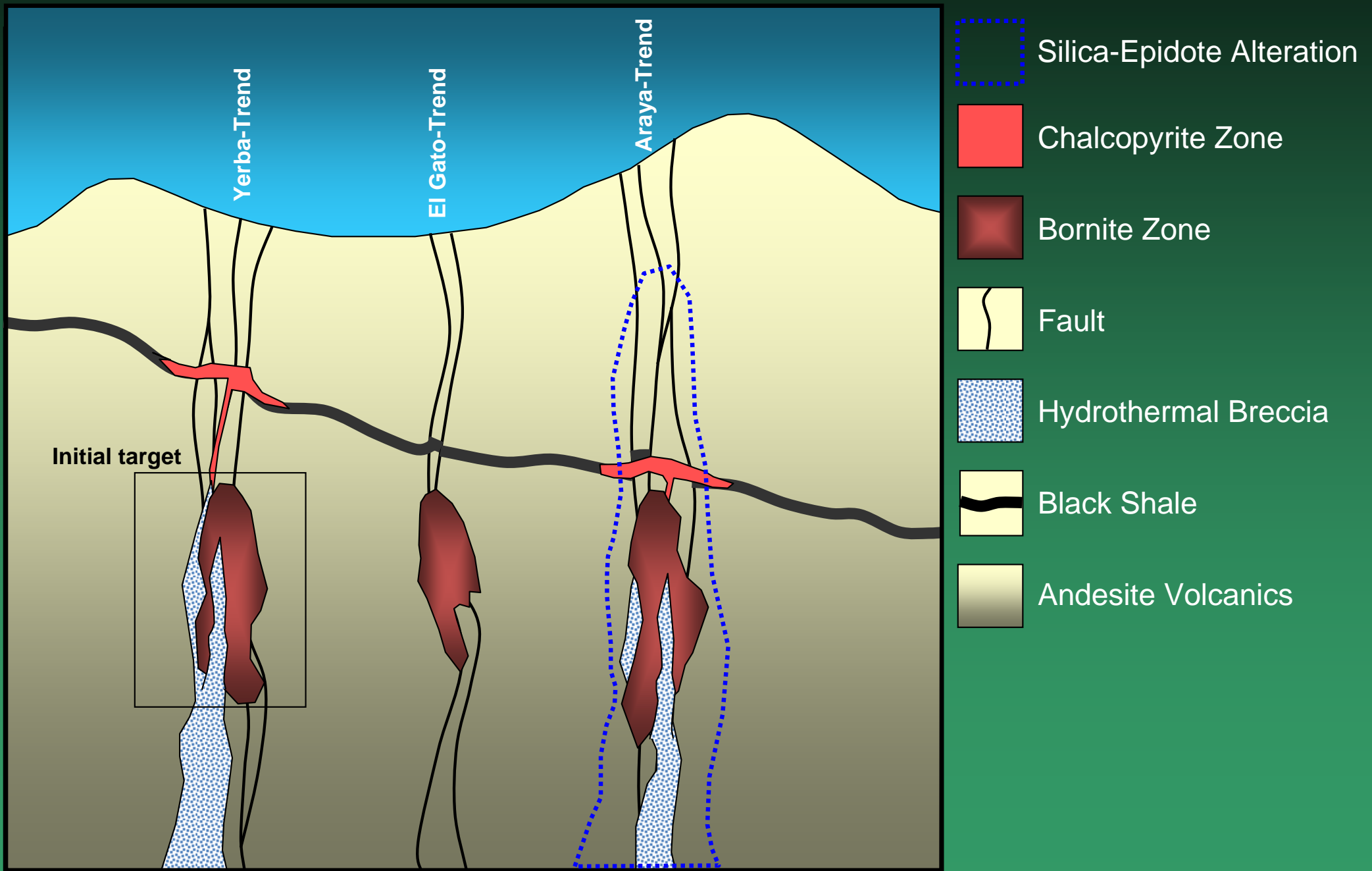
El Soldado Mine (Anglo American)

“an analogue for Naltagua”

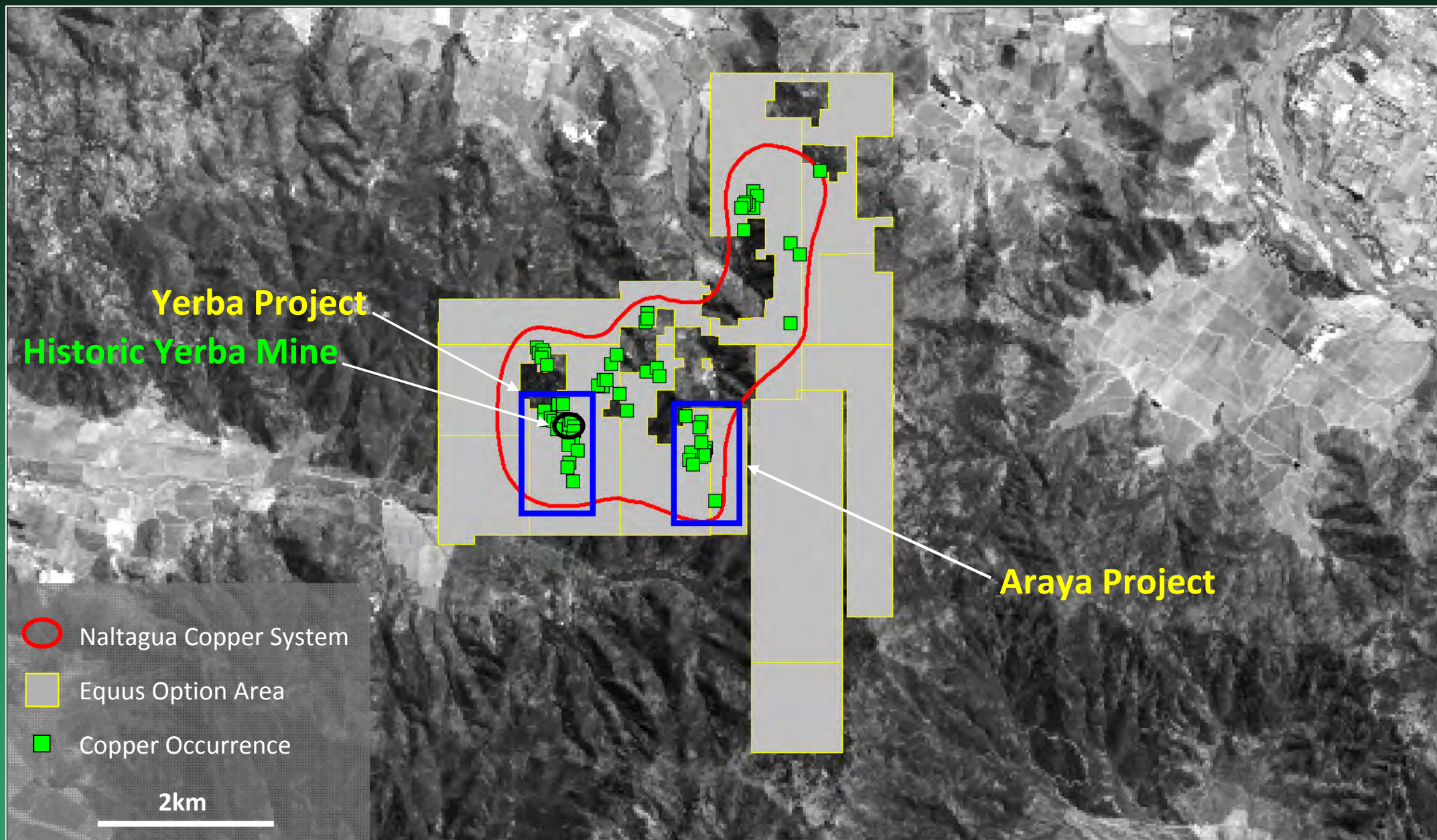
- 135km north of Naltagua
- 200Mt at 1.35% Cu
- Coastal Metallogenic Belt (like Naltagua)
- La Prado Formation (like Naltagua)
- Andesite host rock (like Naltagua)
- Strong structural control (like Naltagua)
- Open-pit and Underground Mining (open-stope)
- Mining in a populated rural area



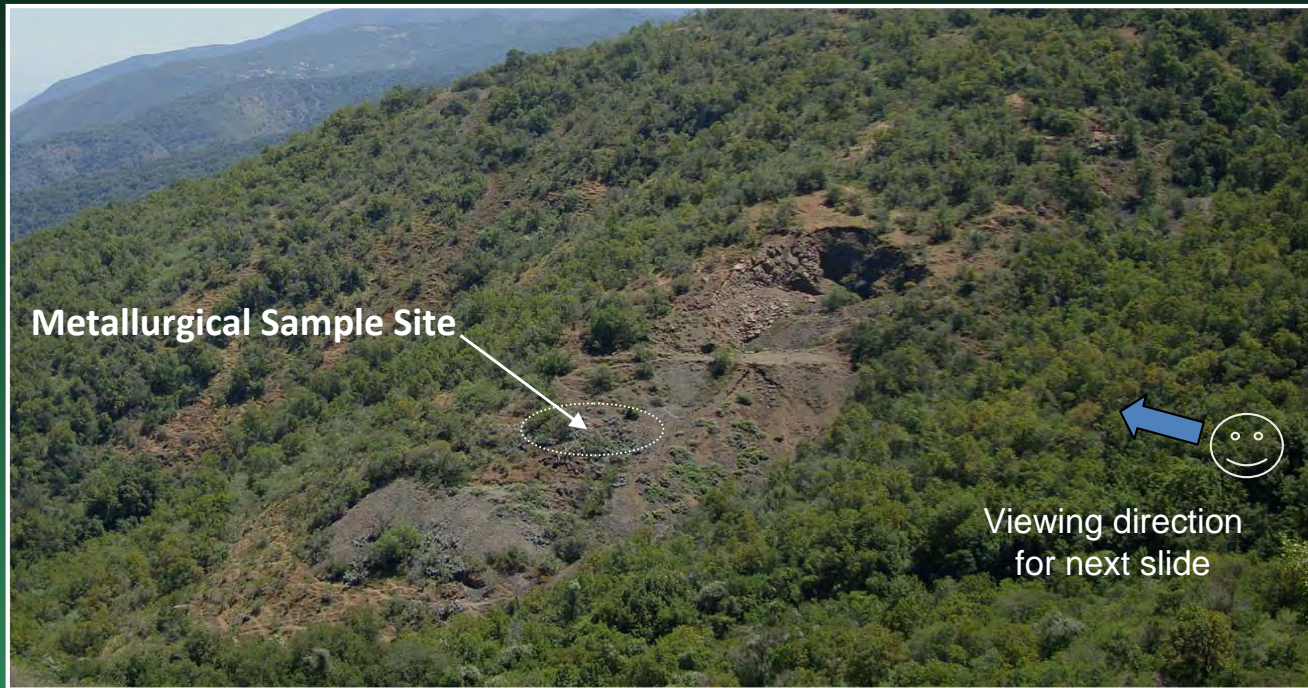
'Mantos': a prominent deposit-type in Chile.....



Naltagua: Big copper footprint (4km by 2km).....



Premium sulphide concentrate.....



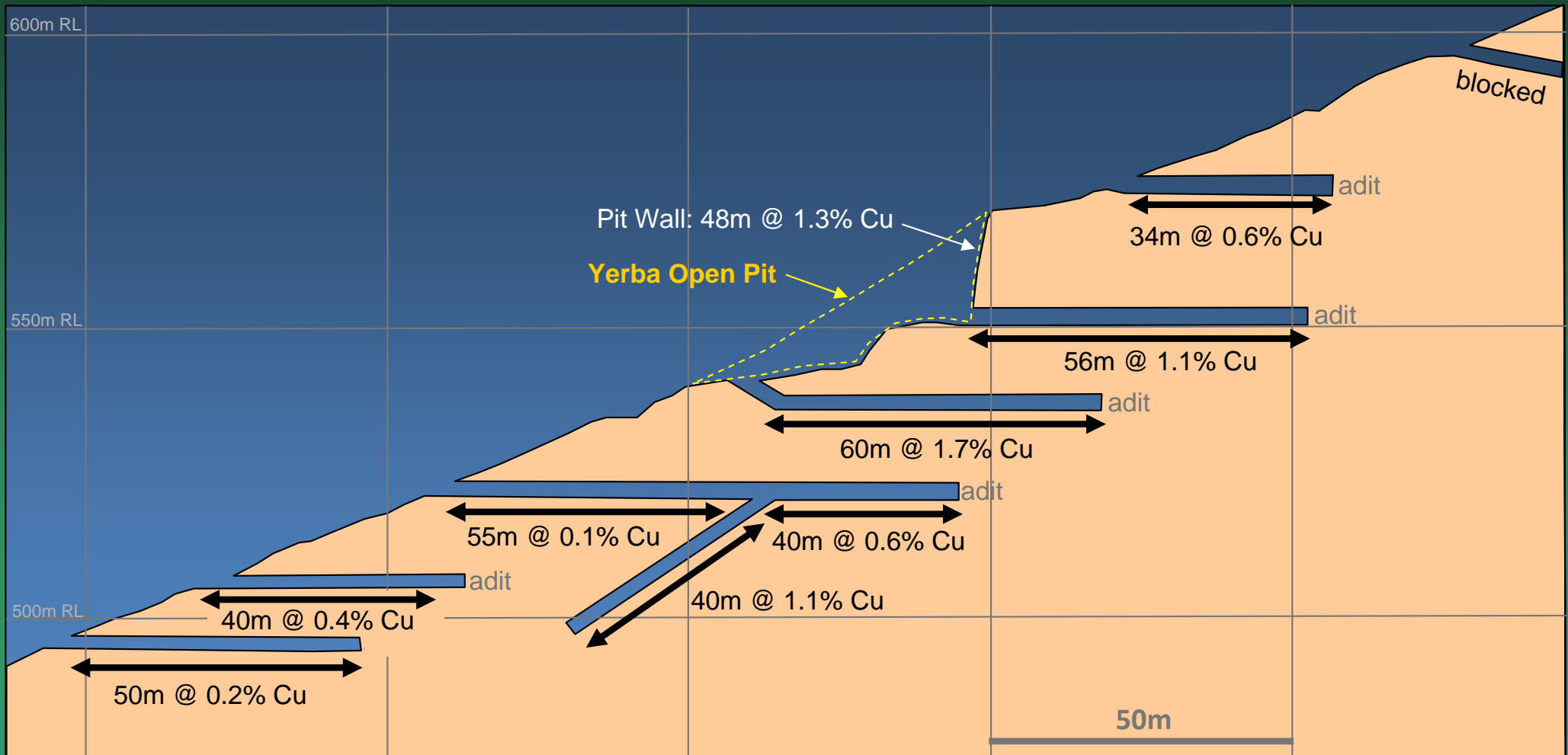
“Equus conducted the first metallurgical testwork”

- 30kg ALS Ammtec, Sydney
- Premium sulphide concentrate (41% Cu, 463g/t Ag)
- +75% recovery in partially oxidised 'ore' (considerable upside)
- Silver (Ag) reporting with copper in sulphide concentrate
- No penalty elements



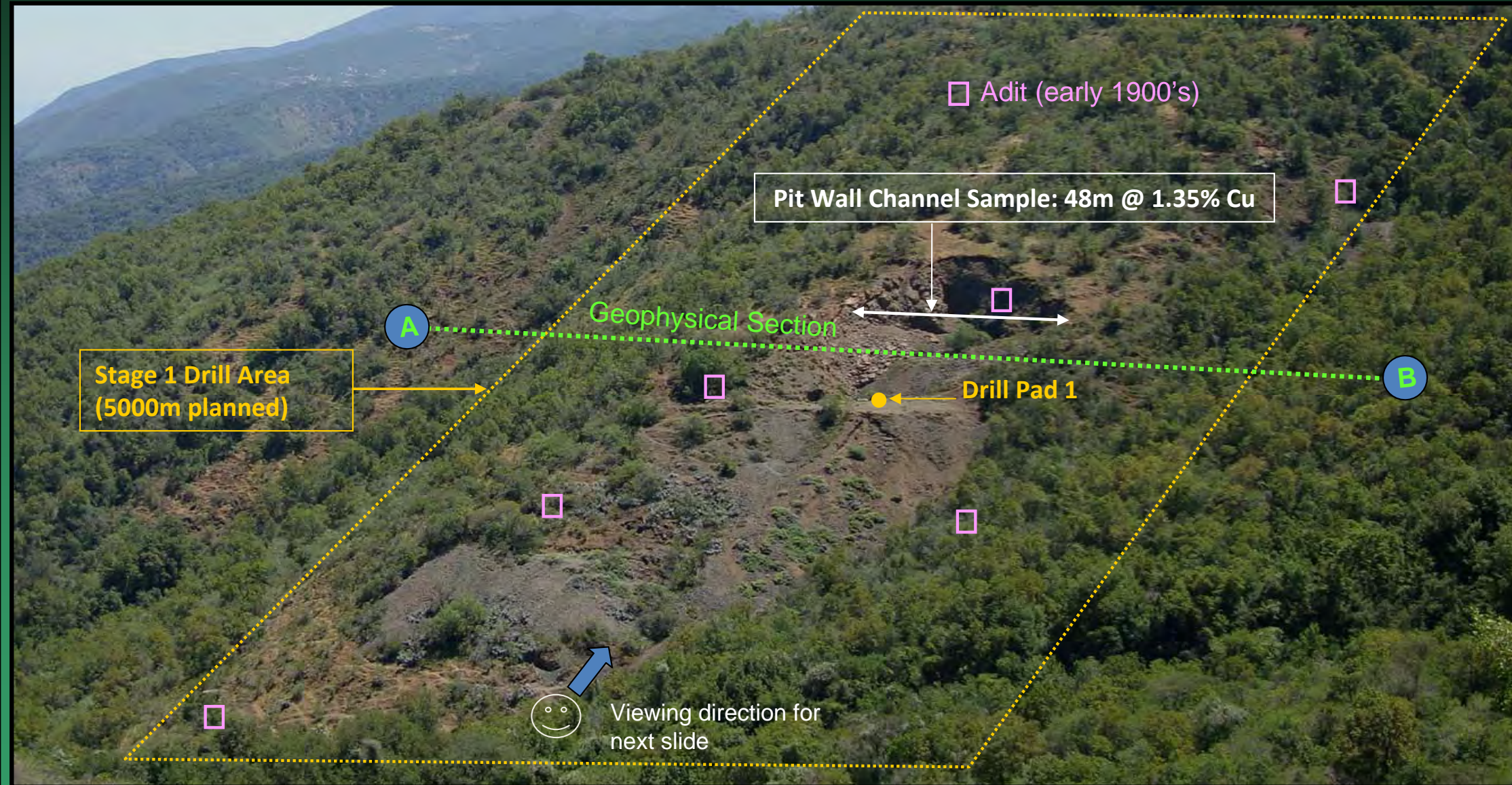
Copper grades above 1%.....

“Equus channel-sampled the old mines”

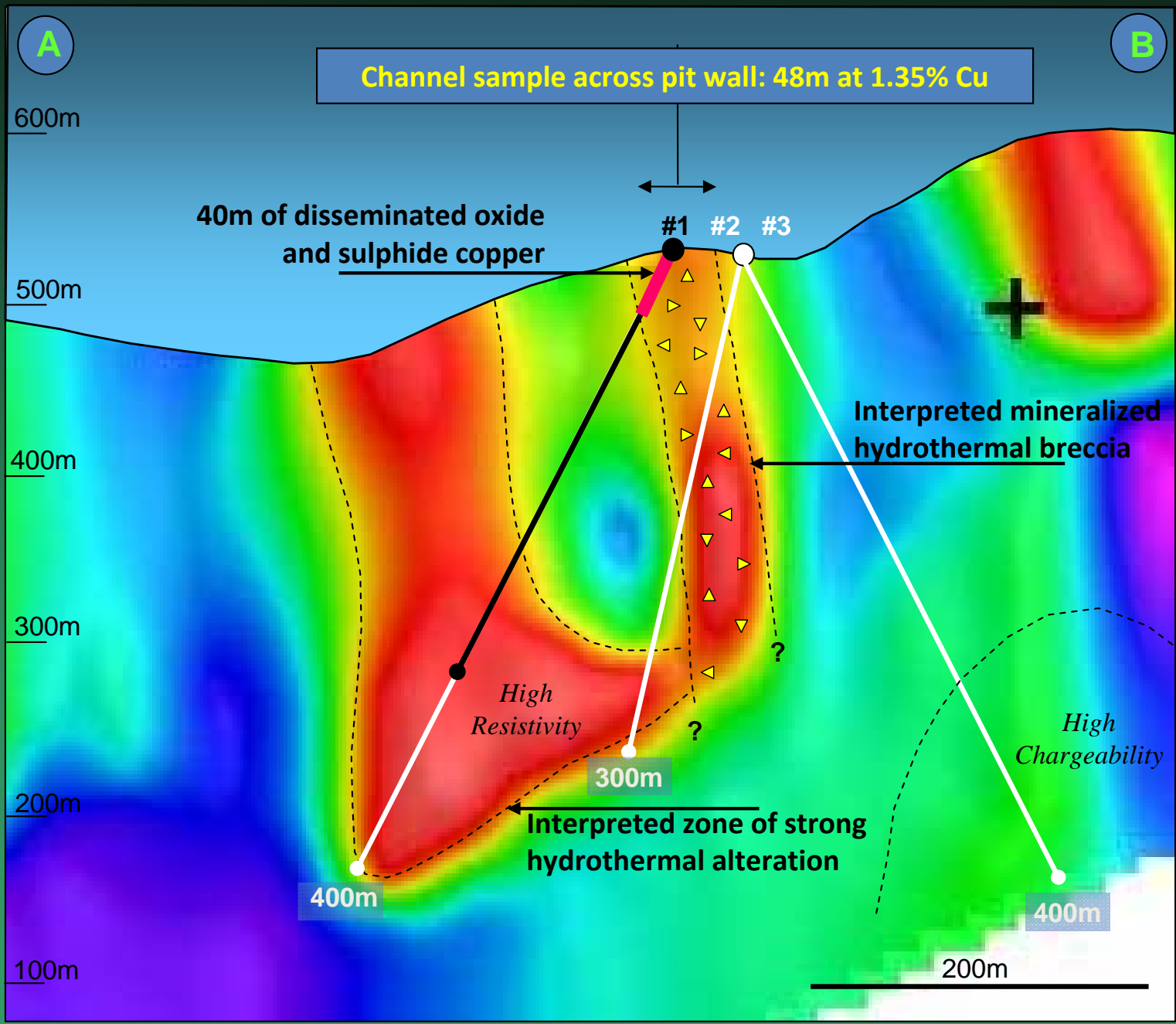


No previous drilling.....

“Equus is initially drilling in and around the historic Yerba Workings”



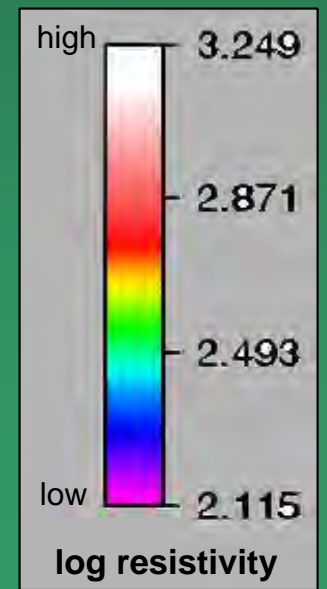
Induced Polarisation Resistivity....



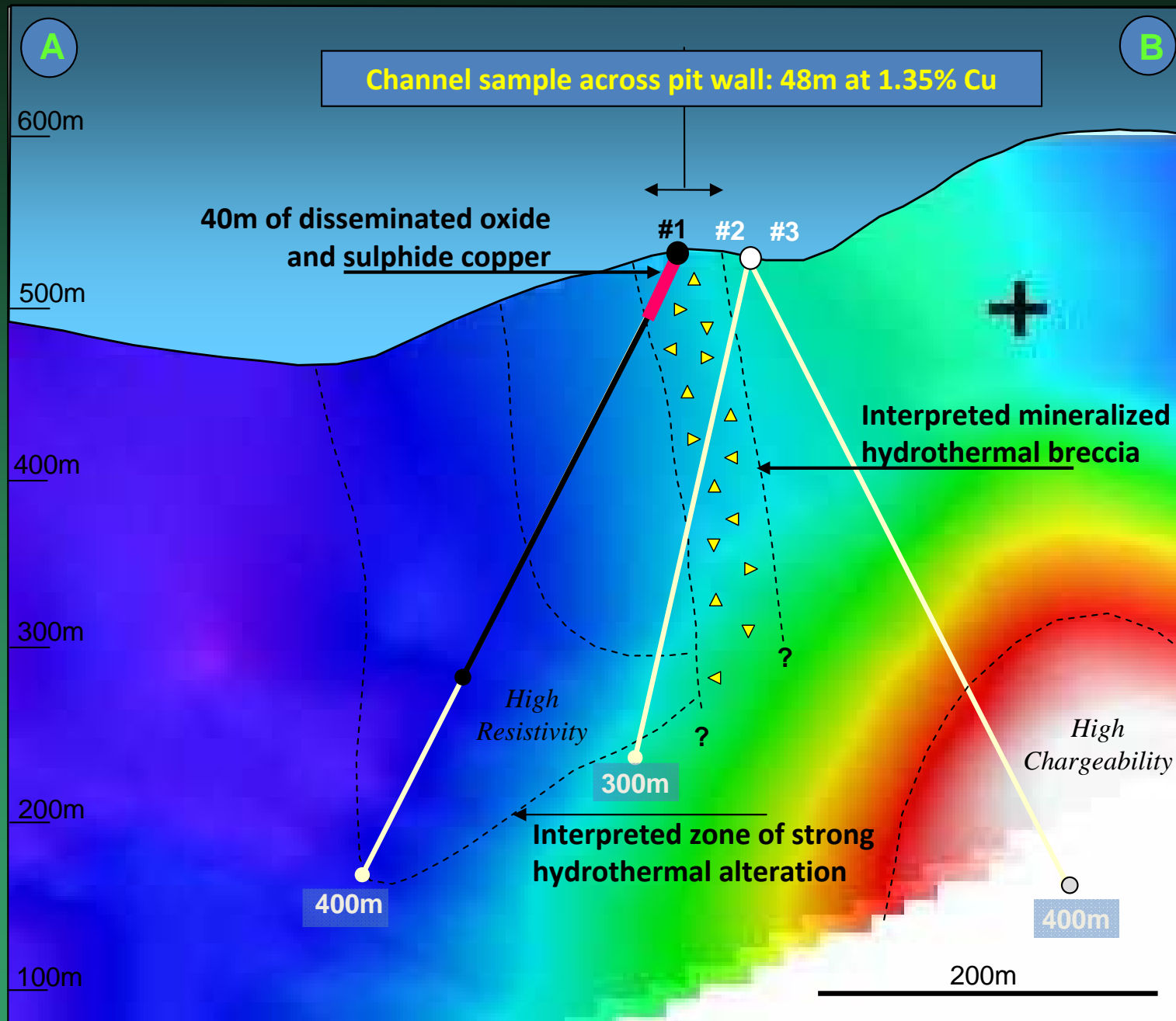
LEGEND

- #2 Hole Number (YB-002-D)
- Planned Drilling
- Completed Drilling

Section A – B
Induced Polarisation Resistivity



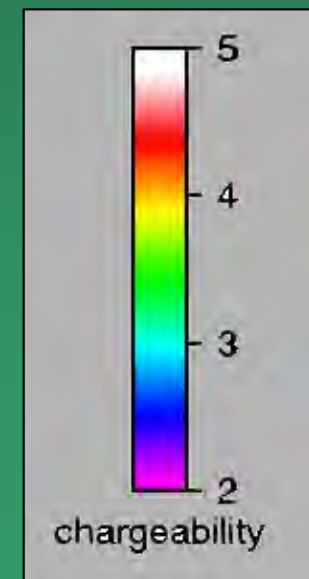
Induced Polarisation Chargeability....



LEGEND

- #2 Hole Number (YB-002-D)
- Planned Drilling
- Completed Drilling

Section A – B Induced Polarisation Chargeability



40m of copper mineralization....

“ disseminated oxide and sulphide copper in hydrothermal breccia ”



15.7m below surface
(18.5m down-hole)



38.5m below surface
(43.3m down-hole)



39.5m below surface
(46.5m down-hole)



41.5m below surface
(48.8m down-hole)

Assays expected mid-May 2013

1200 metre-long target zone.....

Yerba Project Area

33m @ 0.88% Cu

48m @ 1.35% Cu

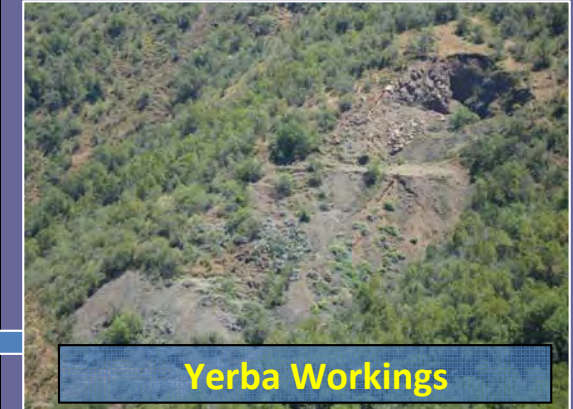
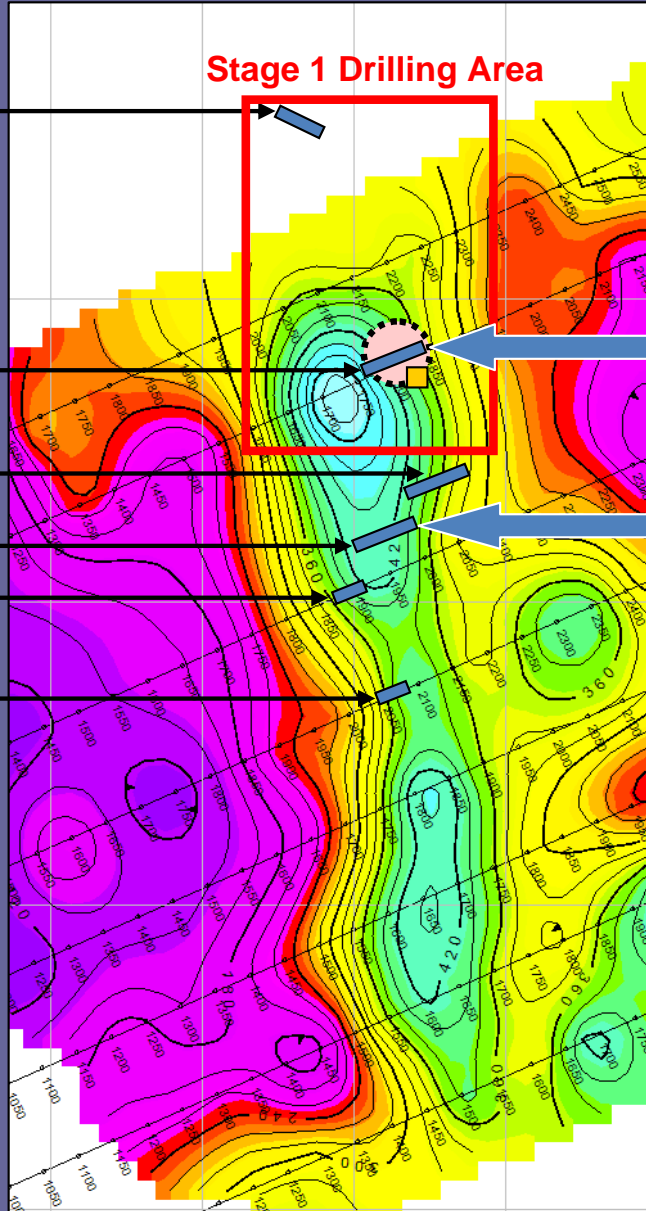
60m @ 0.39% Cu

55m @ 0.27% Cu

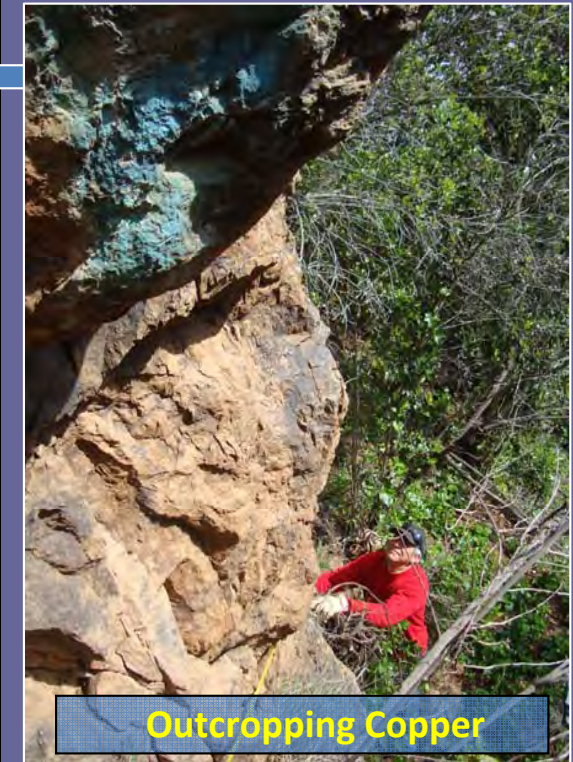
10m @ 1.73% Cu

20m @ 0.52% Cu

Stage 1 Drilling Area



Yerba Workings



Outcropping Copper

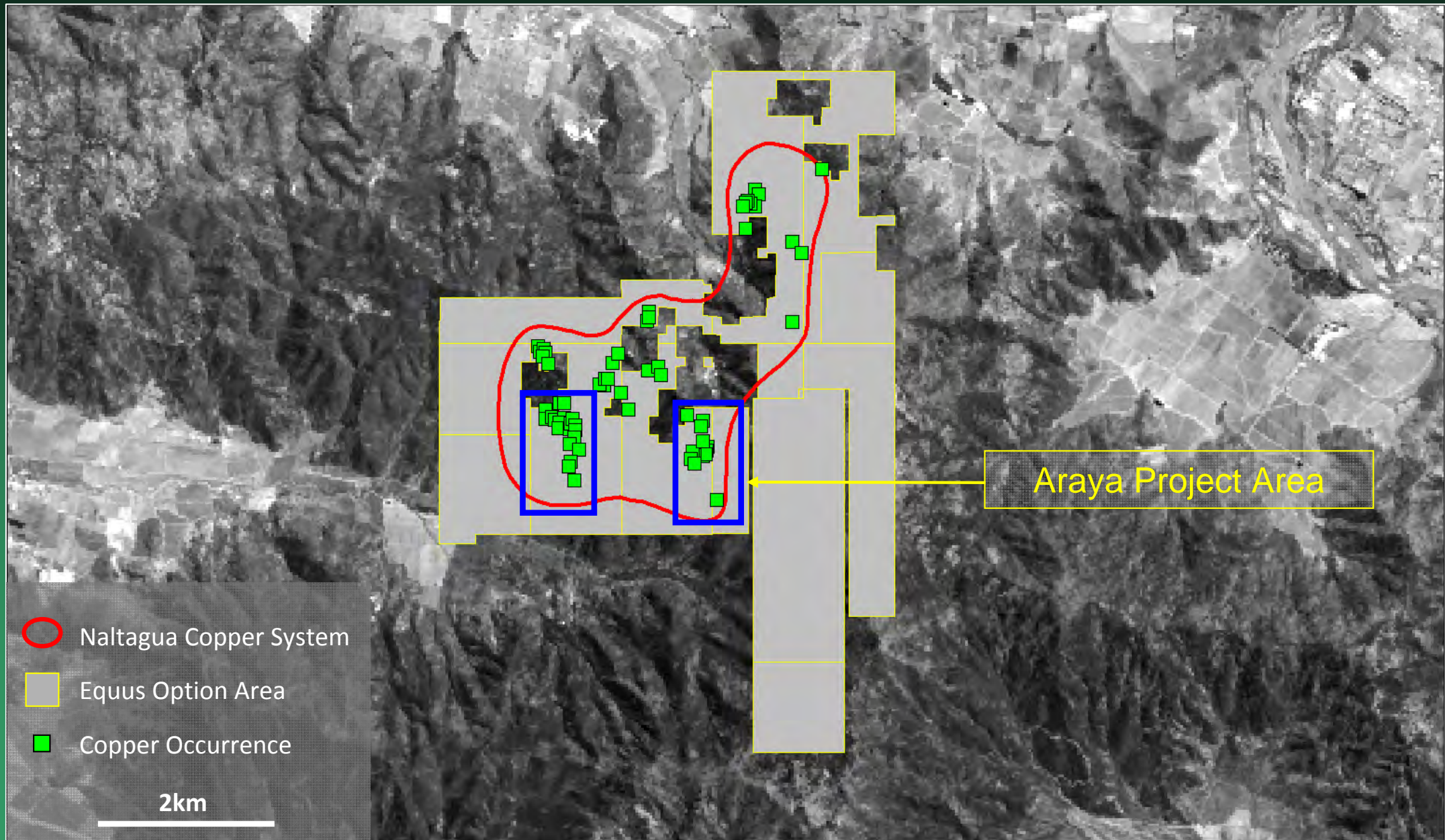
 High Resistivity (Geophysical Anomaly)

 Surface Rock Channel Geochemistry (2m & 5m composites)

 Drill Collar (Diamond)

500m

Second project ready to go.....



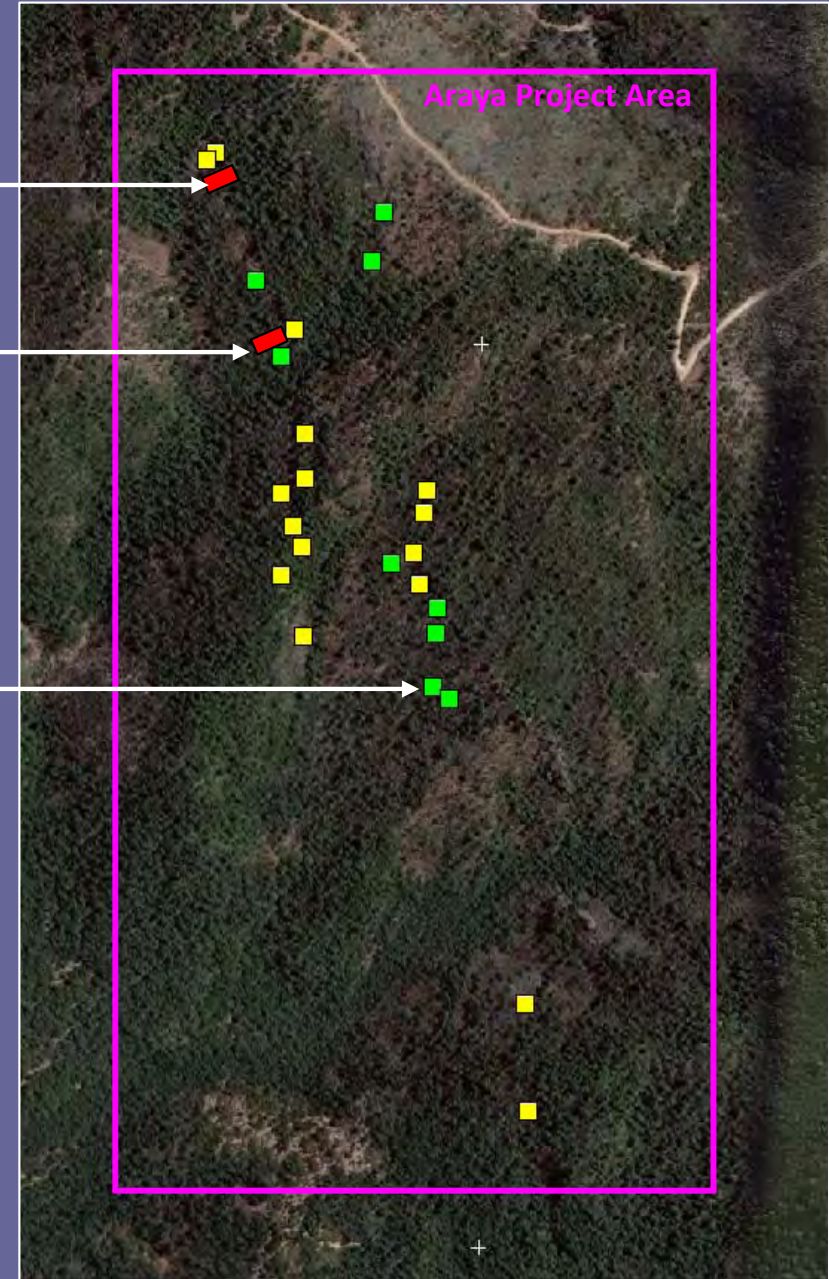
All the right signs.....



Araya Project Area

16m @ 1.9% Cu
Underground (adit)

20m @ 0.65% Cu
Surface Outcrop



- Copper Working (Adit)
- Copper Occurrence (No Working)
- ▴ Rock Channel Geochemistry (2m & 5m composites)

Disclaimer & Compliance.....



This presentation has been prepared by Equus Mining Limited (“Equus”). The information contained in this presentation is a professional opinion only and is given in good faith. Certain information in this document has been derived from third parties, though Equus has no reason to believe that it is not accurate, reliable or complete. It has not been independently audited or verified by Equus.

Any forward-looking statements included in this document involve subjective judgement and analysis and are subject to uncertainties, risks and contingencies, many of which are outside the control of, or may be unknown to Equus. In particular, they speak only as of the data of this document, they assume success of Equus’s strategies, and they are subject to significant regulatory, business, competitive and economic uncertainties and risks. Actual future events may vary materially from the forward looking statements and the assumptions on which forward-looking statements are based. Recipients of this document (“Recipients”) are cautioned to not place undue reliance on such forward-looking statements.

Equus makes no representation or warranty as to the accuracy, reliability or completeness of information in this document and does not take responsibility for updating or correcting any error or omission which may become apparent after this document has been issued. Any references to exploration target size and target mineralisation in this presentation are conceptual in nature only and should not be construed as indicating the existence of a JORC Code compliant mineral resource. There is insufficient information to establish whether further exploration will result in the determination of a mineral resource within the meaning of the JORC Code.

To the extent permitted by law, Equus and its officers, employees, related bodies corporate and agents (“Agents”) disclaim all liability, direct indirect or consequential (and wether or not arising out of the negligence, default or lack of care of Equus and/or any of its Agents) for any loss or damage suffered by a recipient or other persons arising out of, or in connection with, any use or reliance on this presentation or information.

Information in this report that relates to Exploration Results for Naltagua is based on information compiled by Mr Robert Perring, who is an experienced geologist and Member of the Australian Institute of Geoscientists. Mr Perring is a Director of Equus Mining Limited and Equus Resources Limited and has sufficient experience relevant to the style of mineralisation and type of deposit under consideration and to the activities reported on to qualify as a Competent Person as defined in the 2004 Edition of the ‘Australian Code for Reporting of Exploration Results, Mineral Resources and Ore Reserves’. Mr Perring consents to the inclusion of the information in this report of the matters based on information in the format and context in which it appears.



CHILE

www.equusmining.com

