



**EQUUS**  
MINING LIMITED

ABN 44 065 212 679

## ASX Announcement

9 September 2013

### Significant Shallow Copper Mineralization Intersected in Chile

#### Highlights

- **Hole 7 (YB-007-D) intersects significant shallow copper mineralization in mixed andesite-shale package, including 5.4m (true width) at 1.40% Cu from 65.2m to 70.6m and 21.3m (true width) at 1.23% Cu from 92.7m to 114.0m.**
- **Copper mineralization dips east at 30 degrees into Equus Option Area.**
- **Surface outcrop of the same mineralization previously returned 33m at 0.88% Cu (apparent width) in composite channel sample.**

#### Yerba Project, Chile

Equus Mining Limited (ASX:EQE, "Equus") is pleased to announce significant results from drilling at its Yerba Project within the Naltagua copper system in Chile.

Hole 7 (YB-007-D) intersected copper mineralization in a mixed andesite-shale package that returned assays of 5.4m (true width) at 1.40% Cu from 65.2m to 70.6m and 21.3m (true width) at 1.23% Cu from 92.7m to 114.0m. This mineralization is interpreted to broadly correlate with a surface outcrop of copper mineralization that previously returned 33m at 0.88% Cu (apparent width) in a composite channel sample. The copper mineralization dips to the east at 30 degrees into the Equus Option Area.

Hole 5 (YB-005-D), which is located on a section 180m to the south of Hole 7 (Figure 1), intersected a broad interval of low-grade copper mineralization (40.7m true width at 0.15% Cu) in the andesite footwall to the mineralization intersected in Hole 7. Significantly, Hole 5 did not drill test the same stratabound lithological host to the copper mineralization ("manto-horizon") drilled by Hole 7.

Equus Mining Limited ABN 44 065 212 679

Level 2, 66 Hunter Street  
Sydney NSW 2000  
Australia

**T** +61 2 9300 3366  
**F** +61 2 9221 6333  
**E** [info@equusmining.com](mailto:info@equusmining.com)  
**W** [www.equusmining.com](http://www.equusmining.com)

Hole 6 (YB-006-D), designed to test a deep Induced Polarisation chargeability anomaly at 350m to 400m below surface was abandoned at 289m after several days of unproductive drilling in a problematic fault zone. The deep IP target remains untested.

Drilling has now been suspended while the Chile Government processes Equus's application to modify its drill platform configuration at Yerba. An area of only 300m by 300m of the large, 4km by 2km Naltagua copper system has been drill-tested to date and small-scale copper mining continues on land adjacent the Equus Option Area. Equus has no ownership interest in these mining operations.

### Upcoming Work

- Work with the Chile Government to secure approval for the modified configuration of drill platforms at Yerba and for the new drill platforms proposed at Cerro Oveja and Araya (Figure 2).
- Construct a stratigraphic model for the thick (+1km) volcano-sedimentary sequence at Naltagua with the objective of identifying and ranking the more prospective manto horizons.
- Continue to assess new project opportunities with the objective of offsetting any further delays to the approval of drilling at Naltagua with drilling elsewhere in Chile.

### Background

Equus Mining Limited (ASX: EQE) acquired an interest in the Naltagua Copper District in Chile, South America by purchasing unlisted Australian public company Equus Resources Limited in August 2012. The Naltagua Copper District is located 80 kilometres southwest of Santiago (capital city of Chile) and 75 kilometres southeast of the Pacific Ocean port-city of San Antonio. The area is well-served by major infrastructure.

Equus holds the option to acquire 100% of a contiguous group of 14 mining licences covering an area of 18.05 square kilometres and 75% of the known areal extent of the large Naltagua copper system. These mining leases encompass the Yerba, Araya and Cerro Oveja project areas (Figure 2).

**Equus Mining Limited** ABN 44 065 212 679

Level 2, 66 Hunter Street  
Sydney NSW 2000  
Australia

**T** +61 2 9300 3366  
**F** +61 2 9221 6333  
**E** [info@equusmining.com](mailto:info@equusmining.com)  
**W** [www.equusmining.com](http://www.equusmining.com)



**EQUUS**  
MINING LIMITED

ABN 44 065 212 679

For further information please contact:

**Ted Leschke – Managing Director**

Equus Mining Limited

Ph: +61 2 9300 3366

Email: [tleschke@equusmining.com](mailto:tleschke@equusmining.com)

**Website:** [www.equusmining.com](http://www.equusmining.com)

*Information in this report that relates to Exploration Results for Naltagua is based on information compiled by Mr Robert Perring, who is a Member of the Australian Institute of Geoscientists. Mr Perring is a consultant to and Non-Executive Director of Equus Mining Limited and has sufficient experience relevant to the style of mineralisation and type of deposit under consideration and to the activities reported on to qualify as a Competent Person as defined in the 2004 Edition of the 'Australian Code for Reporting of Exploration Results, Mineral Resources and Ore Reserves'. Mr Perring consents to the inclusion of the information in this report of the matters based on information in the format and context in which it appears.*

**Equus Mining Limited** ABN 44 065 212 679

Level 2, 66 Hunter Street  
Sydney NSW 2000  
Australia

**T** +61 2 9300 3366  
**F** +61 2 9221 6333  
**E** [info@equusmining.com](mailto:info@equusmining.com)  
**W** [www.equusmining.com](http://www.equusmining.com)

**Table 1 – Drill Hole Information**

Hole No.	North WGS-84 UTM	East WGS-84 UTM	Zone UTM	Dip	Azimuth Grid - UTM	Depth metres
YB-001-D (Hole 1)	6260781	313270	19S	-60	270	325
YB-002-D (Hole 2)	6260775	313330	19S	-75	270	361
YB-003-D (Hole 3)	6260775	313330	19S	-50	270	121
YB-004-D (Hole 4)	6260775	313332	19S	-50	090	196 (Abandoned)
YB-005-D (Hole 5)	6260888	313270	19S	-60	270	220
YB-006-D (Hole 6)	6260871	313525	19S	-80	270	289 (Abandoned)
YB-007-D (Hole 7)	6261068	313208	19S	-60	270	160

**Table 2 – Drill Hole Assay Summary**

Hole No.	Project	From (metres)	To (metres)	Interval (metres)	Estimated True Width (metres)	Copper (%)
YB-001-D	Yerba	13	52	39	39	0.63
YB-002-D	Yerba	22	77	55	55	0.34
including		23	40	17	17	0.68
including		34	40	6	6	1.21
YB-003-D	Yerba	19	23.4	4.4	3.3	0.74
YB-003-D		51.7	64	12.3	9.2	0.44
YB-004-D	Yerba	37	68	31	15.5	0.26
YB-004-D		84	107	23	11.5	0.16
YB-004-D		152	171	19	9.5	0.32
YB-005-D	Yerba	39	83	44	40.7	0.15
including		39	51.9	12.9	11.9	0.26
YB-006-D	Yerba	No Significant Results				
YB-007-D	Yerba	18	40.6	22.6	22.6	0.36
YB-007-D		65.2	70.6	5.4	5.4	1.40
YB-007-D		92.7	114	21.3	21.3	1.23
including		92.7	99.4	6.7	6.7	2.97

Equus Mining Limited ABN 44 065 212 679

Level 2, 66 Hunter Street  
Sydney NSW 2000  
Australia

**T** +61 2 9300 3366  
**F** +61 2 9221 6333  
**E** info@equusmining.com  
**W** www.equusmining.com

# Yerba Project Area

## Figure 1 – Exploration Overview



33m @ 0.88% Cu

48m @ 1.35% Cu

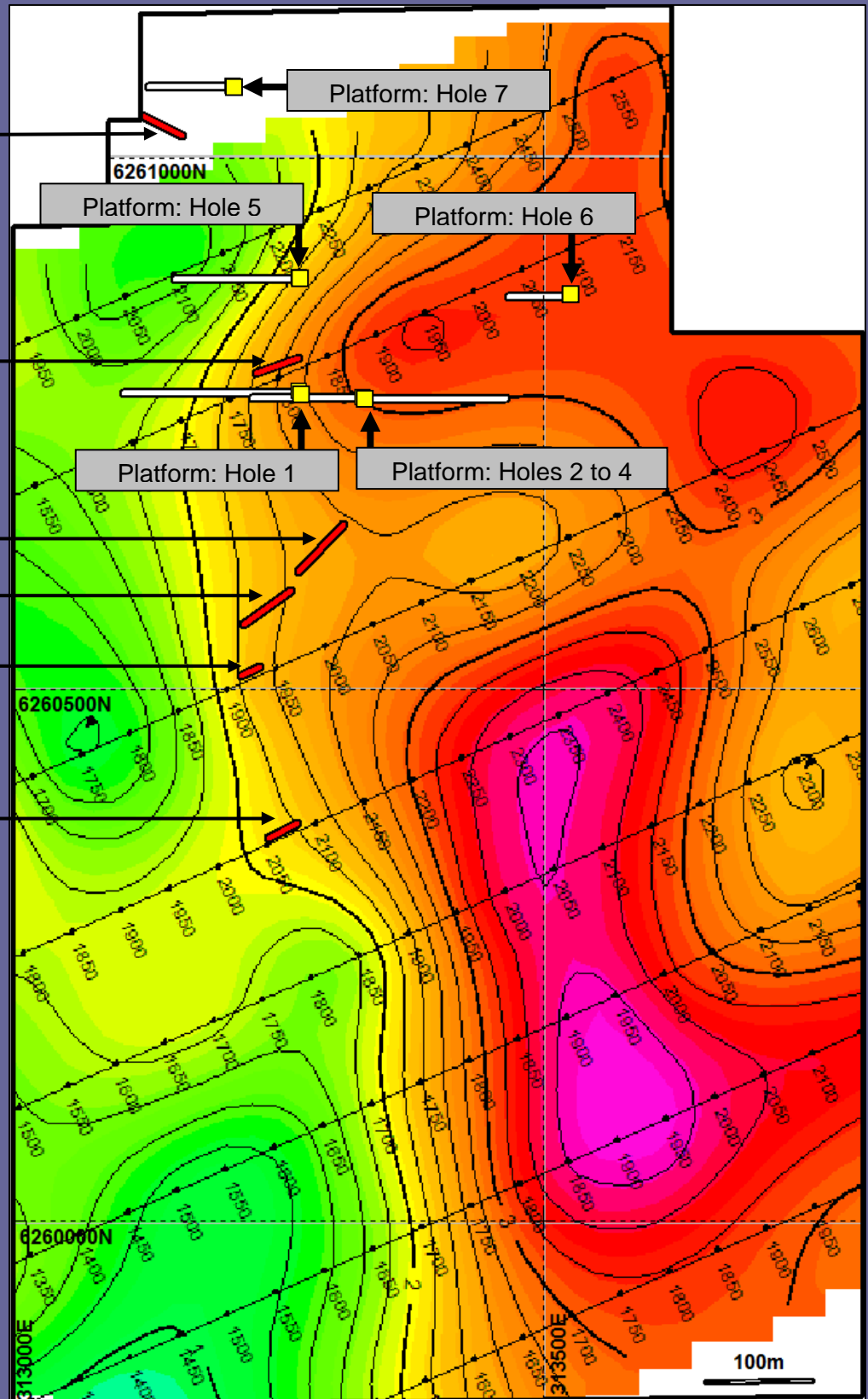
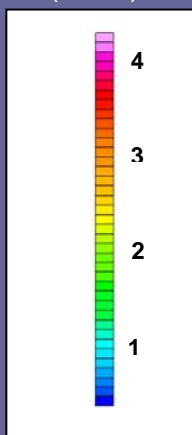
60m @ 0.39% Cu

55m @ 0.27% Cu

10m @ 1.73% Cu

20m @ 0.53% Cu

Induced Polarisation  
Chargeability response  
at 200m below surface  
(mV/V)



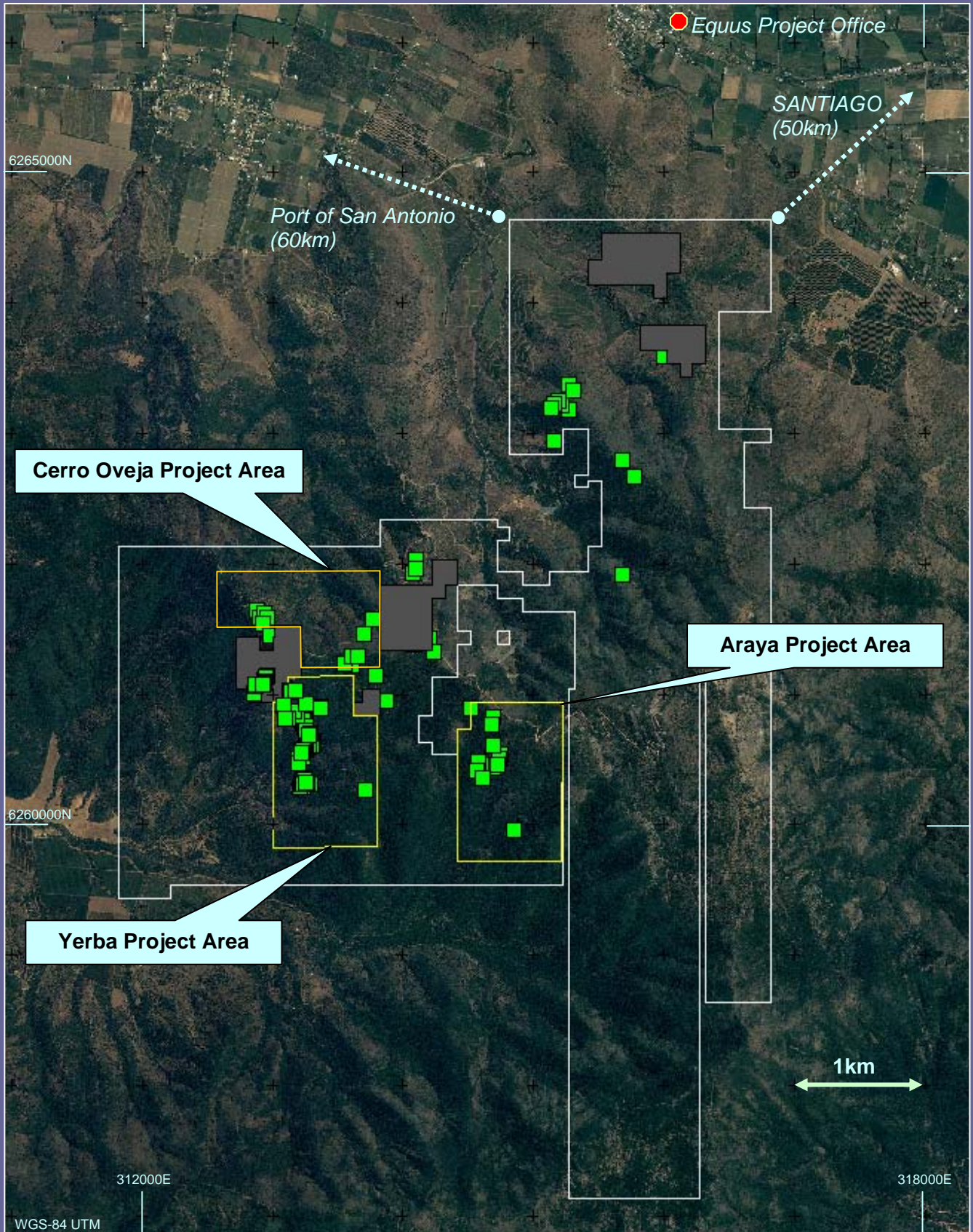
Surface Rock Channel Geochemistry (2m & 5m composites)



Diamond Drill Collar and Hole Trace – Completed

# Naltagua Copper District, Chile

Figure 2 – Location of Project Areas



- Equus Option Area
- Area held by others

- Copper Occurrence
- Defined Project Area