

## Upcoming Investor Briefings

Great Southern Mining Limited (GSN, the Company, ASX: GSN) is pleased to advise that Chief Executive Officer, Sean Gregory, will be presenting at the following event with GSN shareholders invited to register to attend at no cost, compliments of Vertical Events, and GSN.

**Event:** RIU Sydney Resources Round-up Conference  
**Date:** Tuesday 4 May 2021 to Thursday 6 May 2021  
**Time:** 1.45pm Tuesday 4 May 2021 (GSN presentation time)  
**Venue:** Hyatt Regency Sydney  
161 Sussex Street, Sydney  
**Registration:** [via this link](#) and please advise [admin@gsml.com.au](mailto:admin@gsml.com.au)

All presentations will be live-streamed.

All shareholders are also welcome to contact the GSN office on (08) 9240 4111 at anytime to book a time for a direct update on their company with Sean and/or our Executive Chairman John Terpu.

An updated corporate presentation follows this announcement.

**This announcement is authorised by the Executive Chairman on behalf of the Board of GSN.**



# Creating Value Through Discoveries

Investor Presentation

RIU Sydney Conference 4 May 2021



# Corporate overview



## CAPITAL STRUCTURE

**455M**  
SHARES ON ISSUE

**157M**  
LISTED OPTIONS  
Exercise Price \$0.05

**\$25M**  
MARKET CAP  
as at Mar 31, 2021 (5.6c)

**\$2.2M**  
CASH  
as at Mar 31, 2021

## SHAREHOLDERS

<b>Top 20 =</b>	<i>(excluding Directors)</i>	<i>(including Directors)</i>
	<b>40%</b>	<b>70%</b>

## BOARD OF DIRECTORS & MANAGEMENT

### Mr John Terpu, Executive Chairman

- *More than 20 years' commercial and management experience*
- *Former MD of Conquest Mining Limited (now Evolution Mining Limited) for 12 years and led the discovery of the Mt Carlton gold/silver/copper project*

### Mr Sean Gregory, Chief Executive Officer

- *More than 20 years' experience as a geologist and project developer with Barra Resources (MD), Min Res (GM Technical), MMX (GM Geology), BHP (Principal Geologist)*
- *Track record of numerous successful mine developments and corporate transactions*

### Ms Kathleen Bozanic, Non-Executive Director

### Mr Andrew Caruso, Non-Executive Director

### Mr Mark Petricevic, CFO & Company Secretary

# Key Assets and Fundamentals



## Strategic Projects

- Laverton Gold District (>25Moz) – Southern Star, Cox’s Find, Mon Ami
- North QLD Gold District (>20Moz) – Edinburgh Park (Au, Cu, Ag)
- Other commodities – East Laverton nickel sulphide potential

## The Right Team

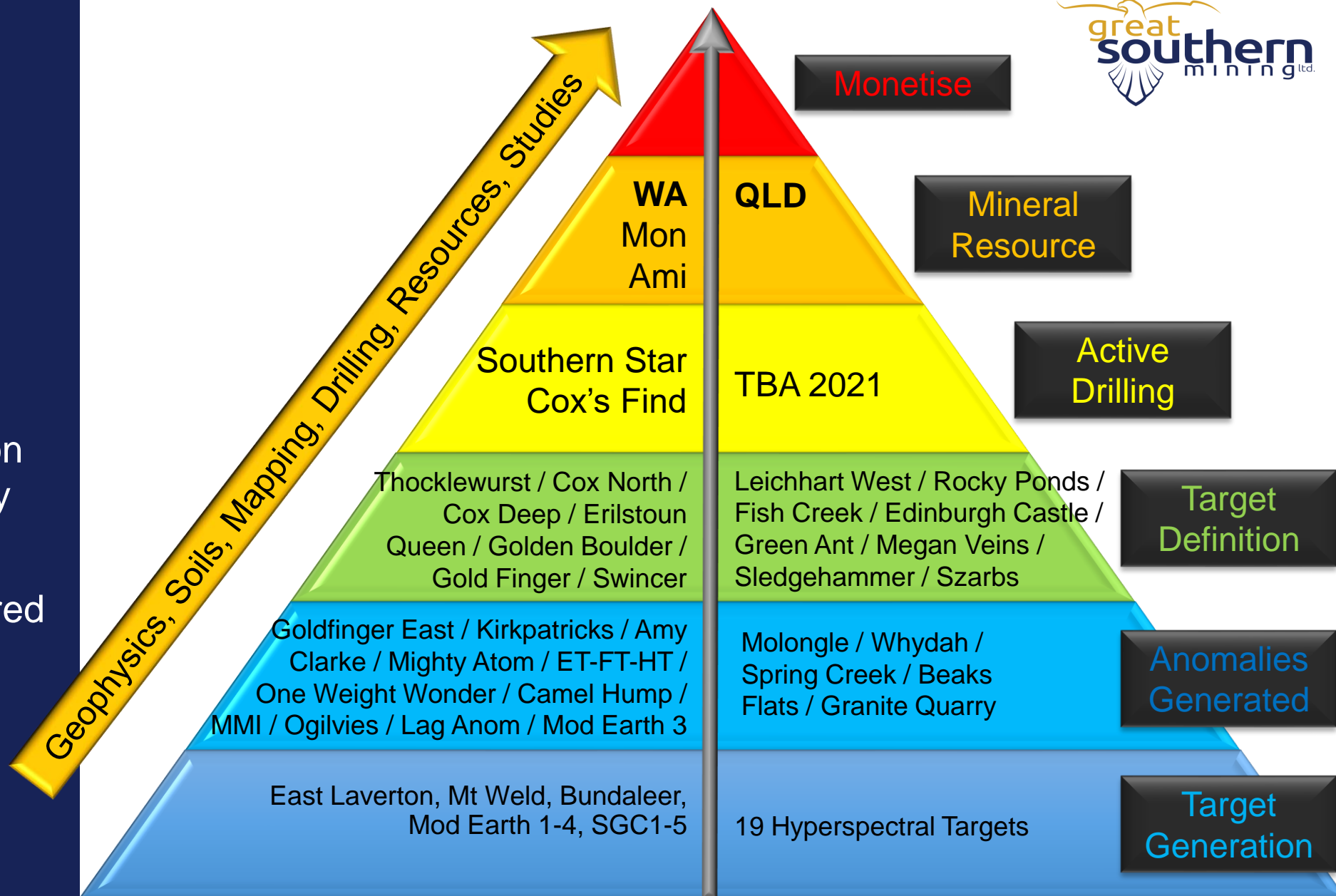
- Management team with proven track record in value creation
- Advanced exploration infrastructure in place

## Extensive Work Program

- 5,000m RC drilling planned for Southern Star
- Grassroots exploration ongoing across vast landholdings >2,000km<sup>2</sup>
- QLD exploration team ranking drill targets

# How We Discover

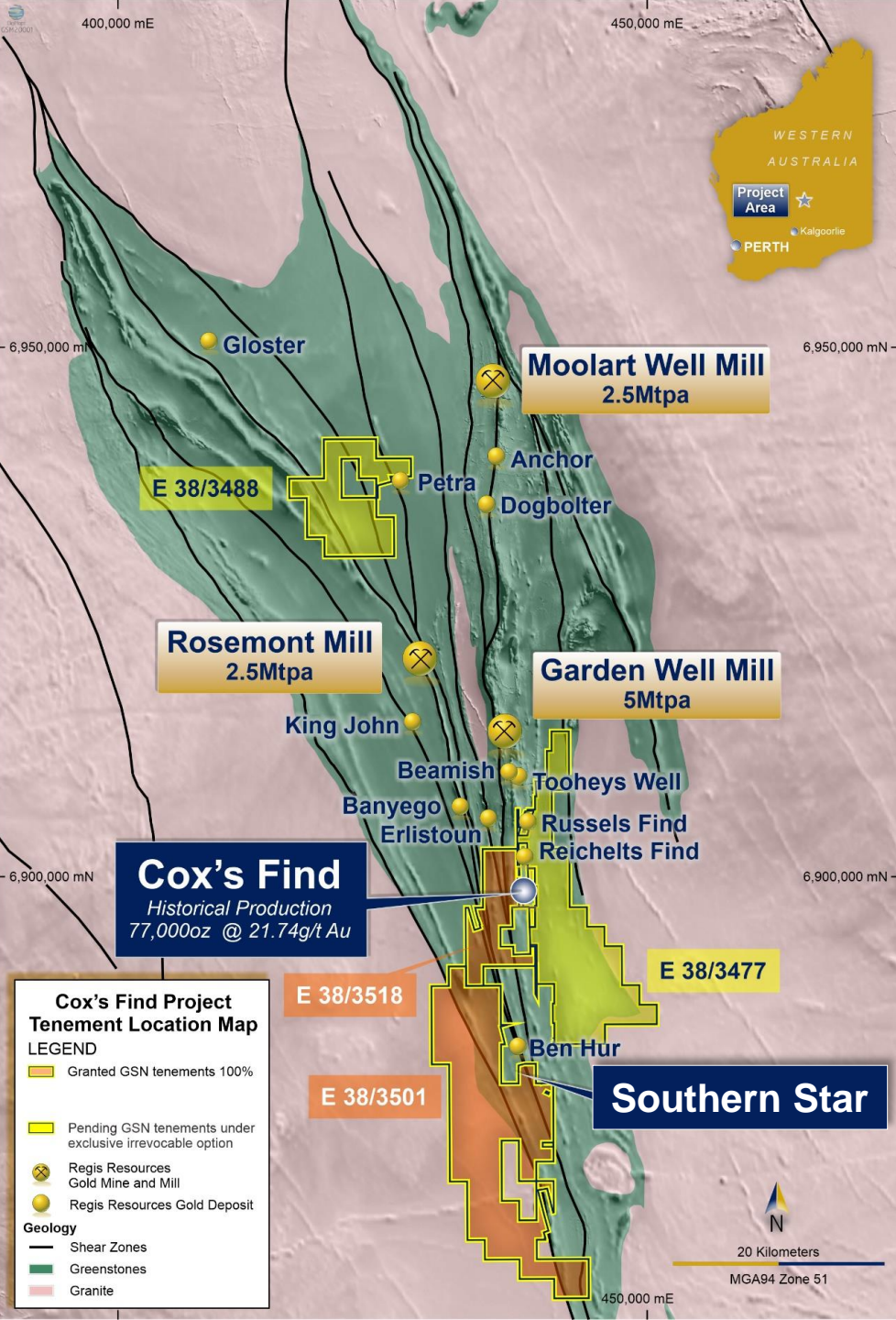
- Each target is ranked on its merits systematically
- Highest ranked targets are aggressively explored
- Targets advance to the next stage on success



<sup>1</sup> Refer to slides 8, 9 and 14 for target locations



# Western Australia



# Duketon Belt



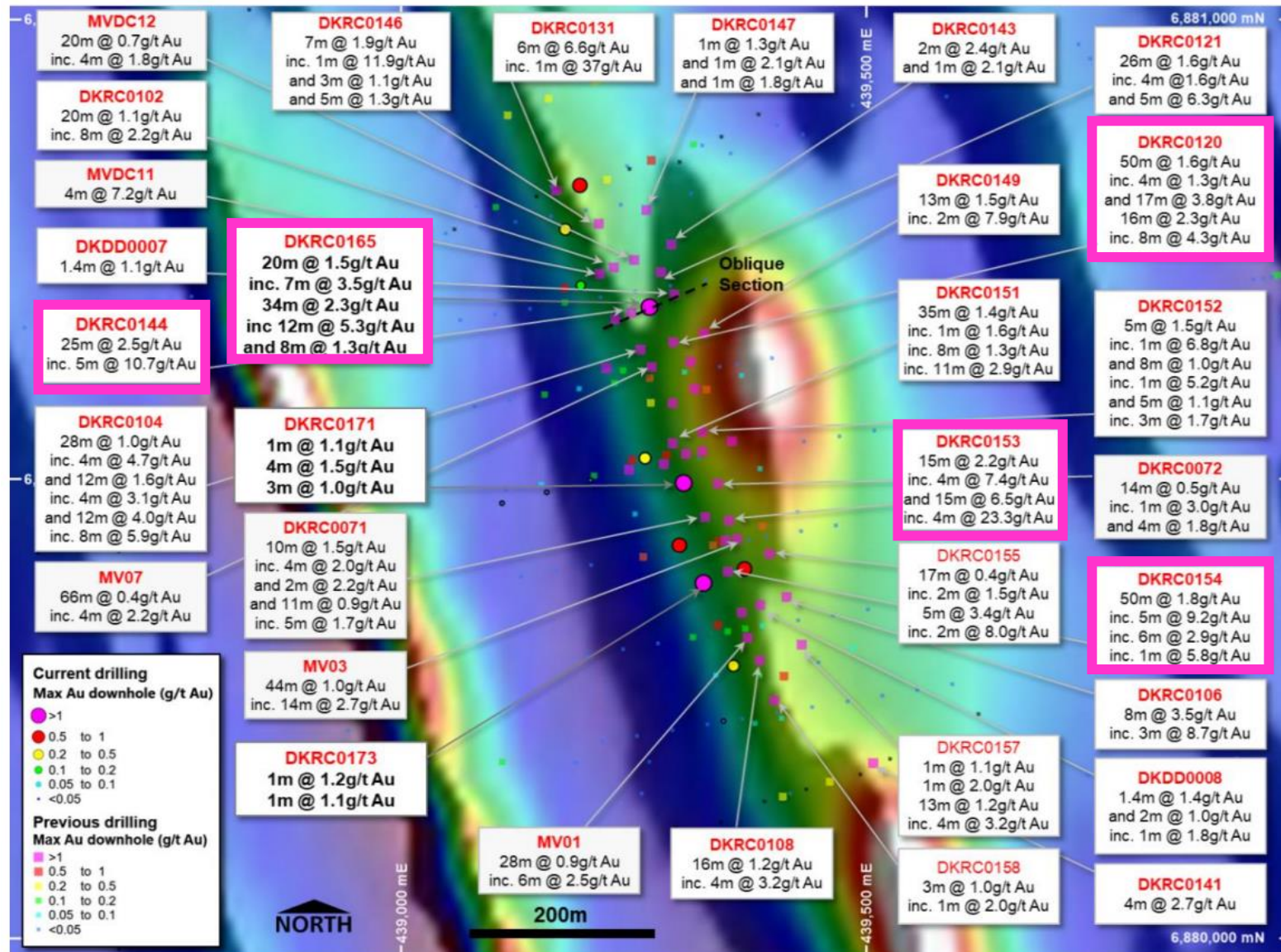
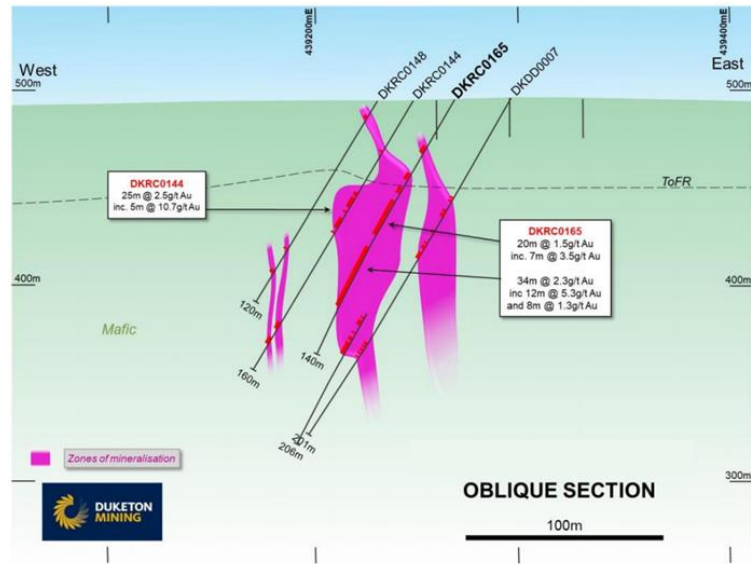
- Recent agreements now bring GSN's Duketon Belt landholding<sup>1</sup> to 459km<sup>2</sup>
- GSN the second largest landholder in the Duketon Belt with 10% of the greenstone
- >50km strike length of the main mineralised structures in the belt to explore
- Key tenements now granted

<sup>1</sup> Including tenement applications and exclusive irrevocable options

# Southern Star Deposit



- 100% GSN owned
- Extensively drilled 2017-18
- >600m strike of thick continuous stacked gold mineralisation open in all directions<sup>1</sup>
- Drilling POW approved

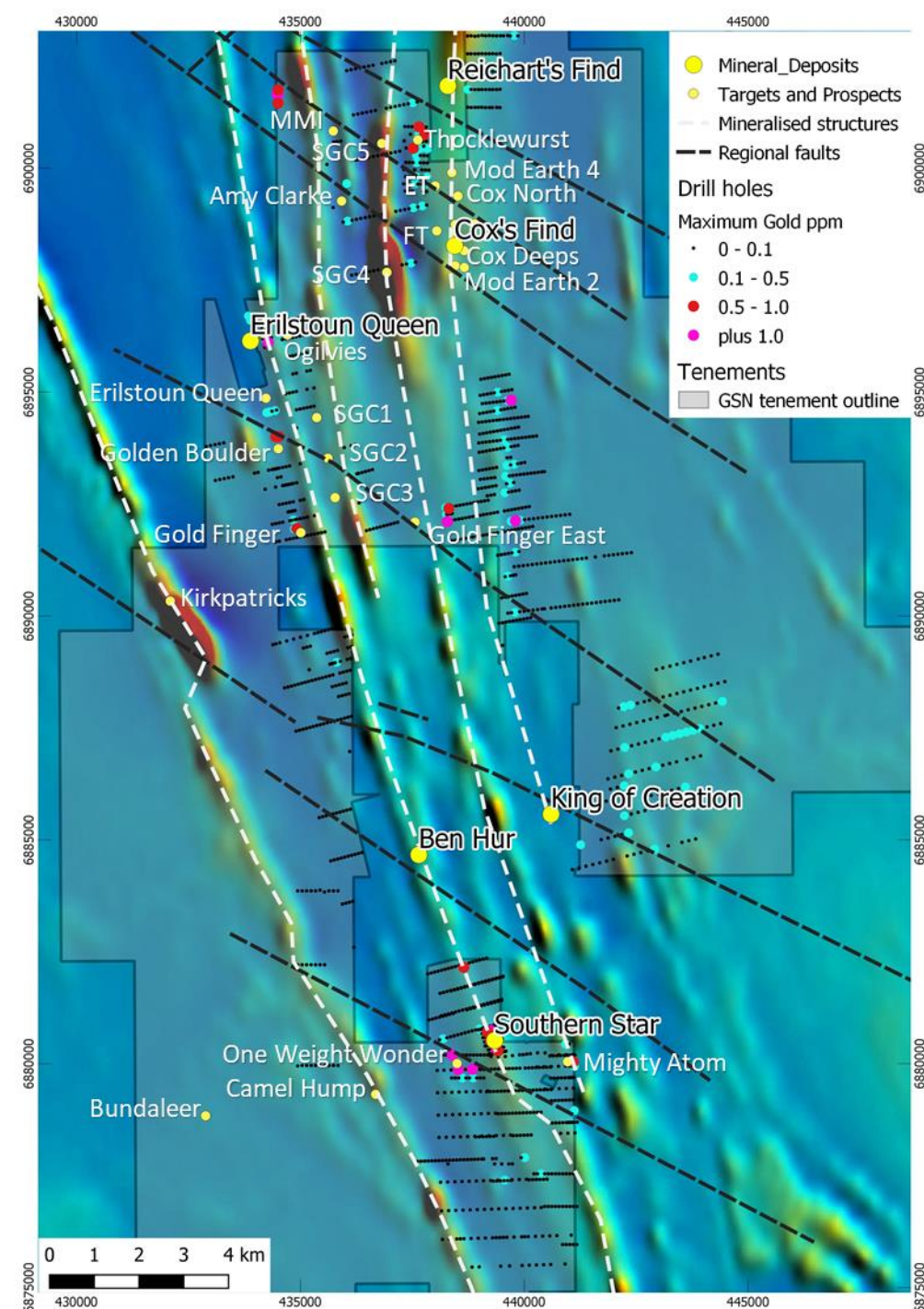


<sup>1</sup> Refer to ASX:GSN Announcement 2/2/21



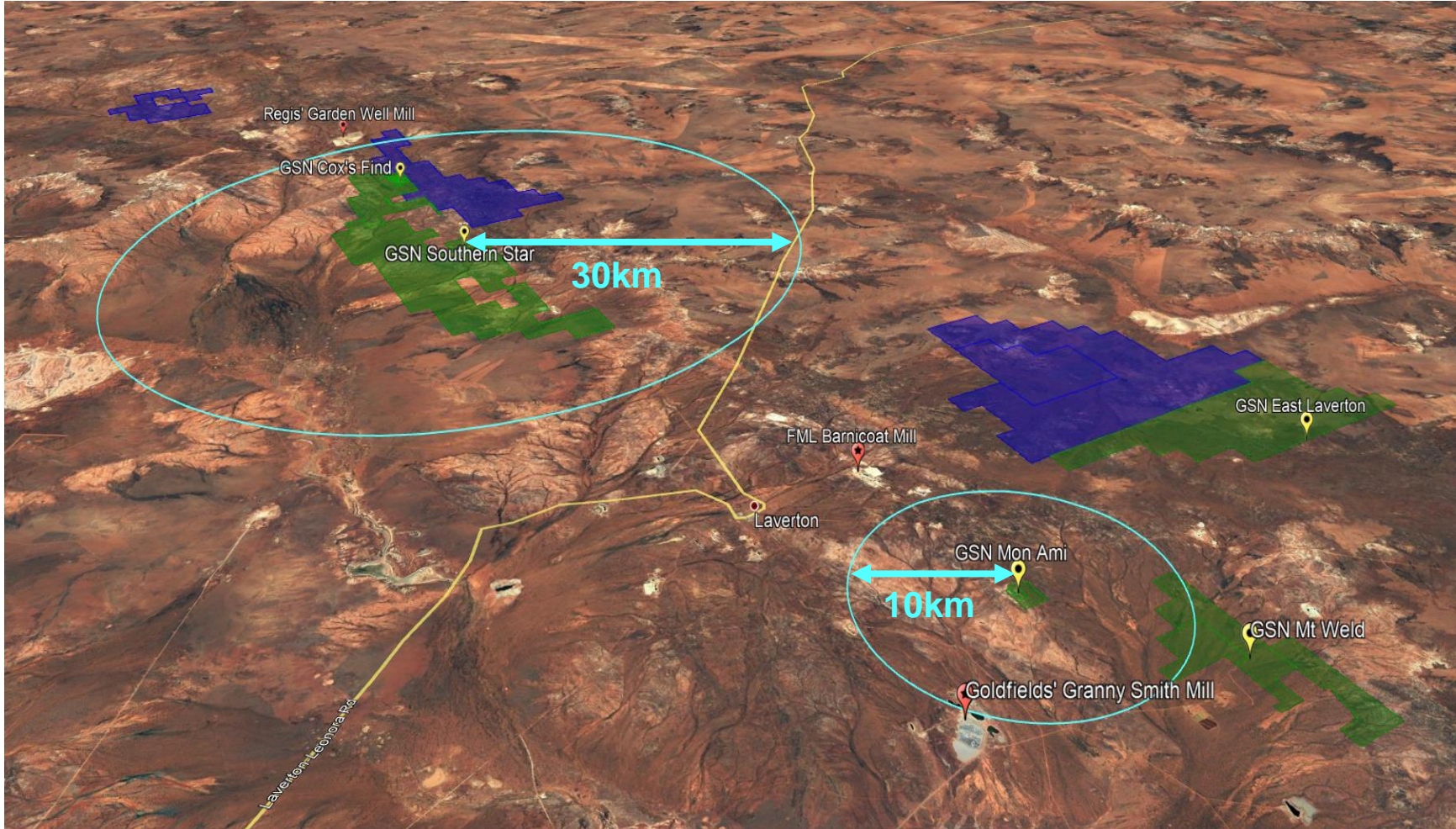
# Exploration Targets

- Outstanding targets generated from 24,000 historical soil samples and 12,000 RAB drill holes justify a high-priority exploration effort
- GSN now has dozen's of targets in the Duketon Belt at different levels in the pyramid
- Geologists are in the field soil sampling and mapping now at One Weight Wonder and Amy Clarke



<sup>1</sup> Refer to ASX Announcement 5/11/20 for detail on the gold targets on E38/3518

# WA Gold Projects: Close to Operating Mills



- Southern Star and Cox's Find within 30km of Regis' low-grade Garden Well Mill
- Mon Ami is only 10km from Goldfields' Granny Smith Mill (operating at 50% capacity)<sup>1</sup>
- 8 potential milling solutions within 150km of Laverton

<sup>1</sup>Source: [www.goldfields.com/australia-region.php](http://www.goldfields.com/australia-region.php) "3.5Mt Capacity" vs June 2020 Half Yearly Report of 877kt processed at Granny Smith

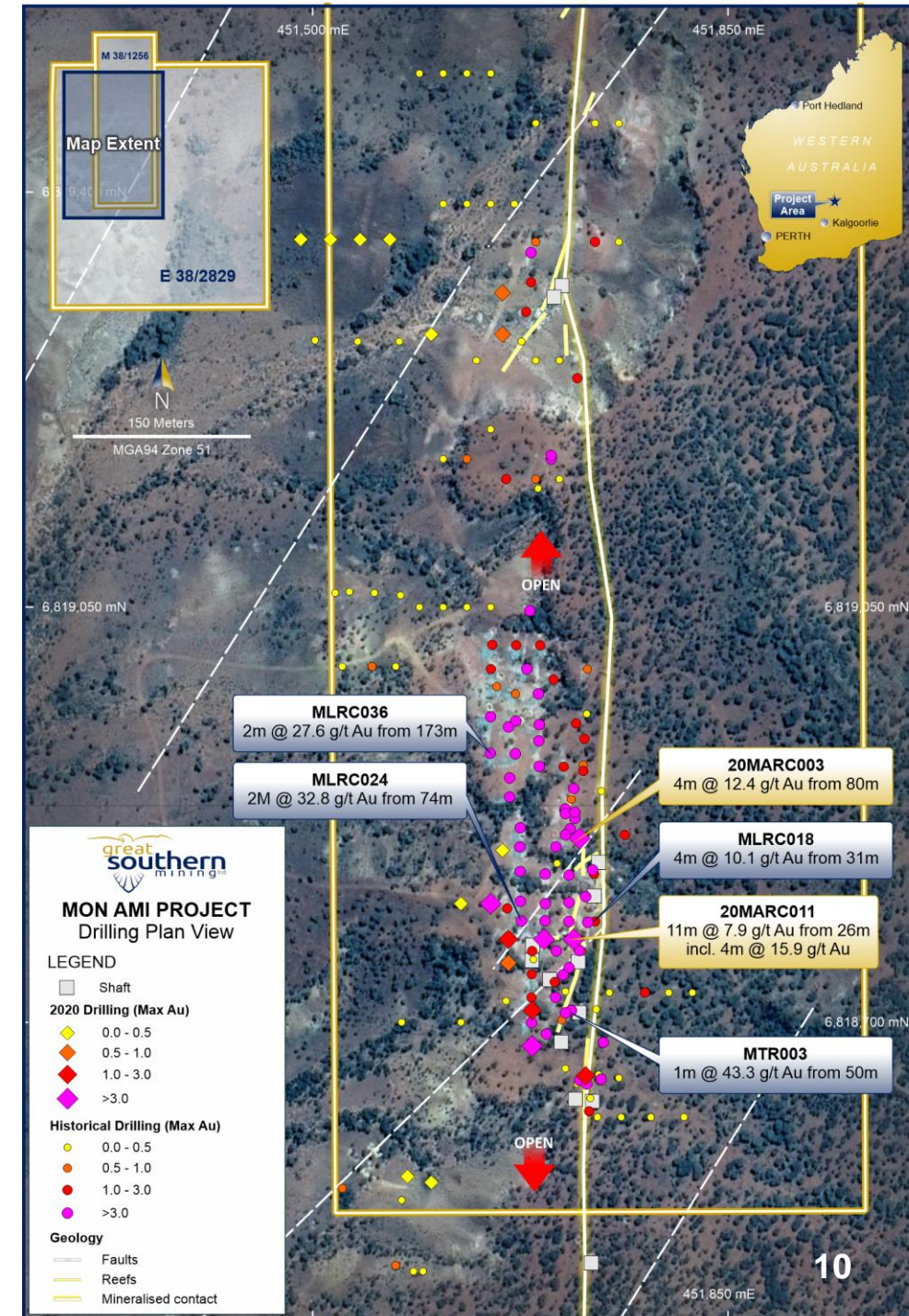
# Mon Ami: Near Term Open Pit

- Inferred Mineral Resource 1.1Mt @ 1.7 g/t Au for 59 koz Au<sup>1</sup>
- Resource classification upgrade planned Q2 2021
- Metallurgical recovery average 95% in oxide and transition zone<sup>2</sup>
- Development studies underway targeting a mining approval in 2021
- Aim to present “shovel ready” project to nearby mills

<sup>1</sup>Refer to ASX Announcement 7/11/18 for the Mon Ami Mineral Resource

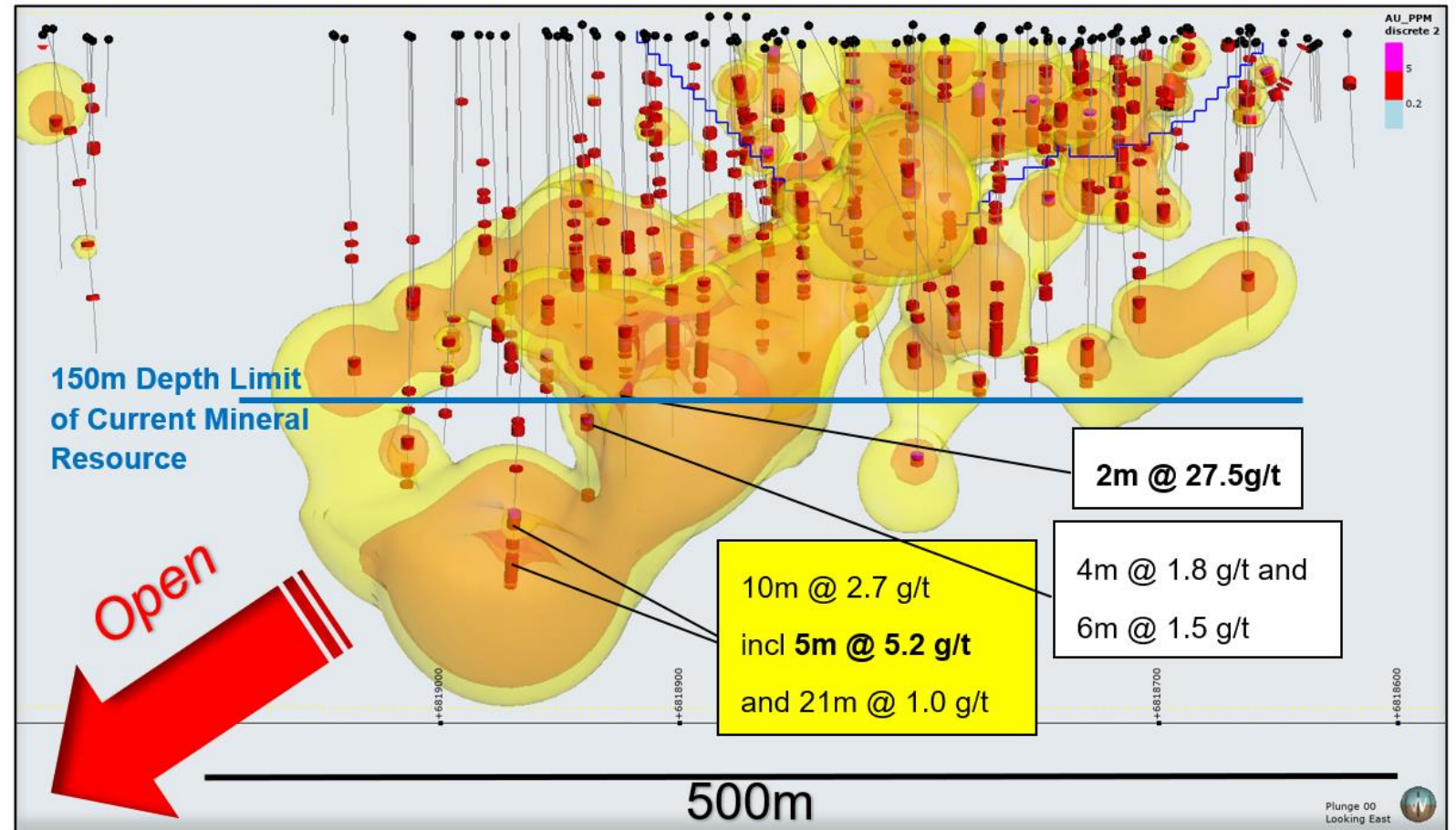
<sup>2</sup>Refer to ASX Announcement 25/1/19 for the Mon Ami Metallurgy Results

<sup>3</sup>Refer to ASX Announcements 12/8/20 for the Mon Ami Drilling Results



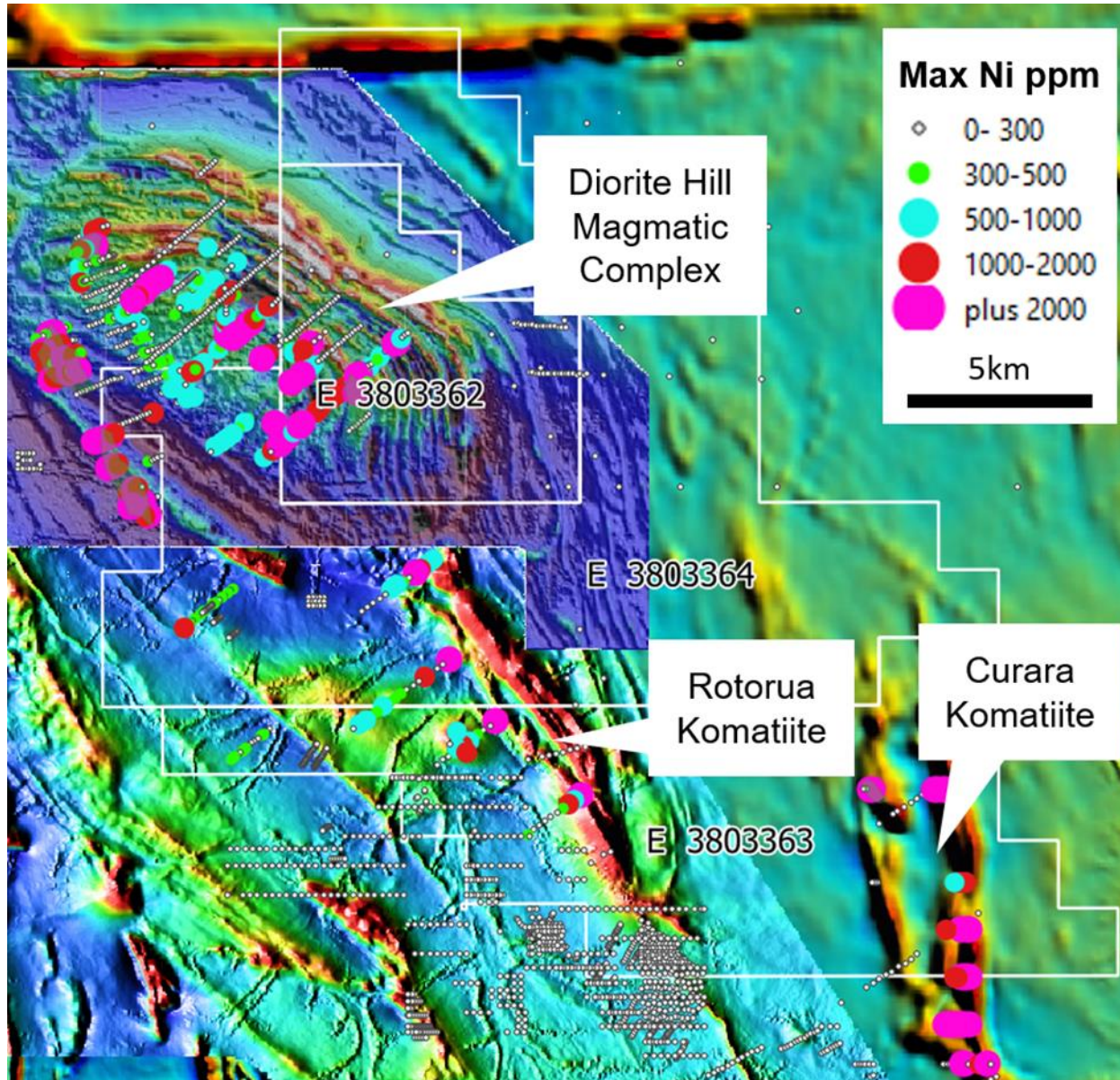
# Mon Ami: Underground Potential

- Deeper high-grade target analogous to Ida H high-grade underground mine 7km along strike (historical production 176Koz @ 22.8 g/t Au)



<sup>1</sup>Refer to ASX Announcement 12/8/20 and 2/3/21 for the Mon Ami Drilling Results

# East Laverton Nickel Project

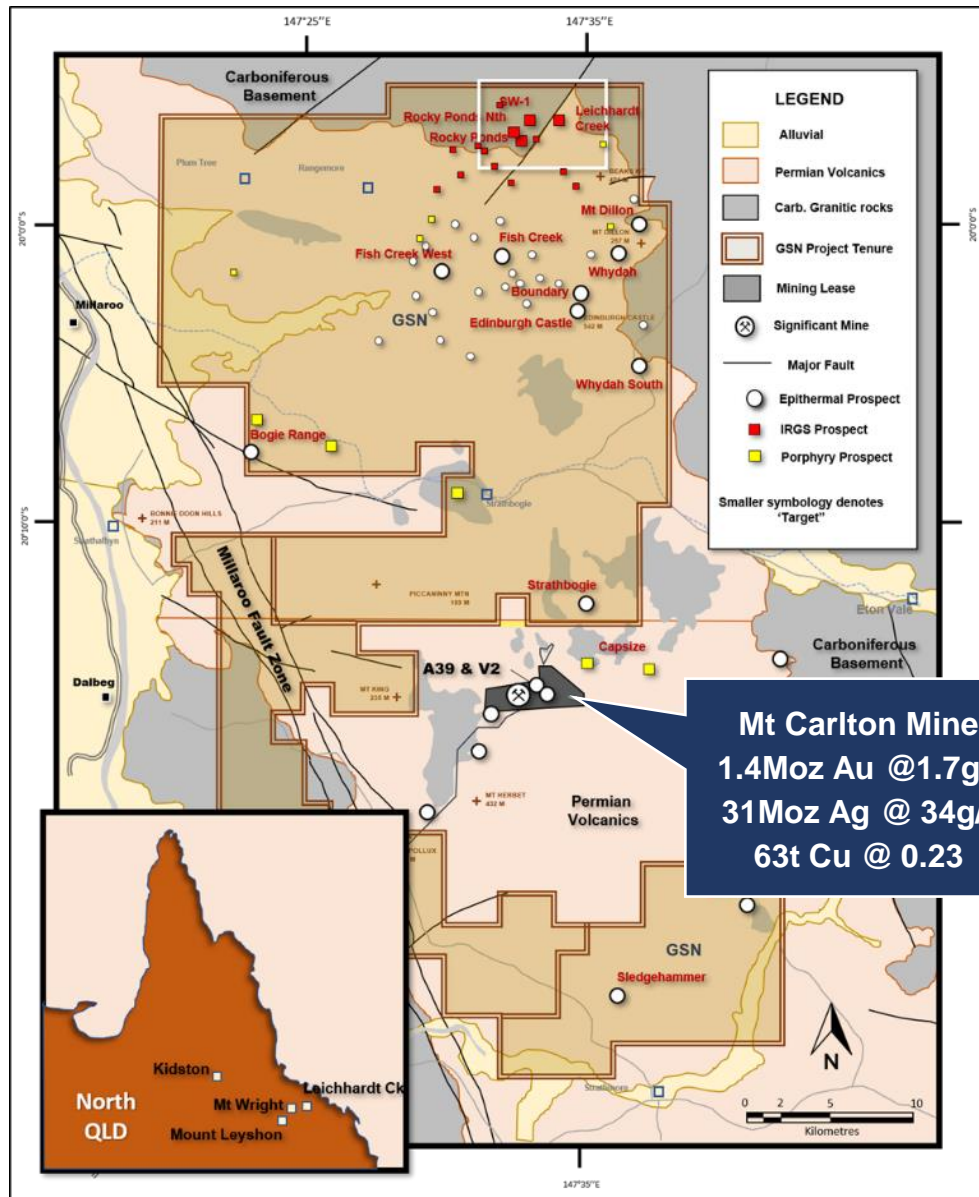


- Pegged in 2018 by GSN, all tenements now granted
- Nickel sulphide potential in layered intrusions only in focus in WA since the 2012 Nova discovery
- Ground Moving-Loop Electro-Magnetic survey planned

Queensland



# North QLD: Edinburgh Park

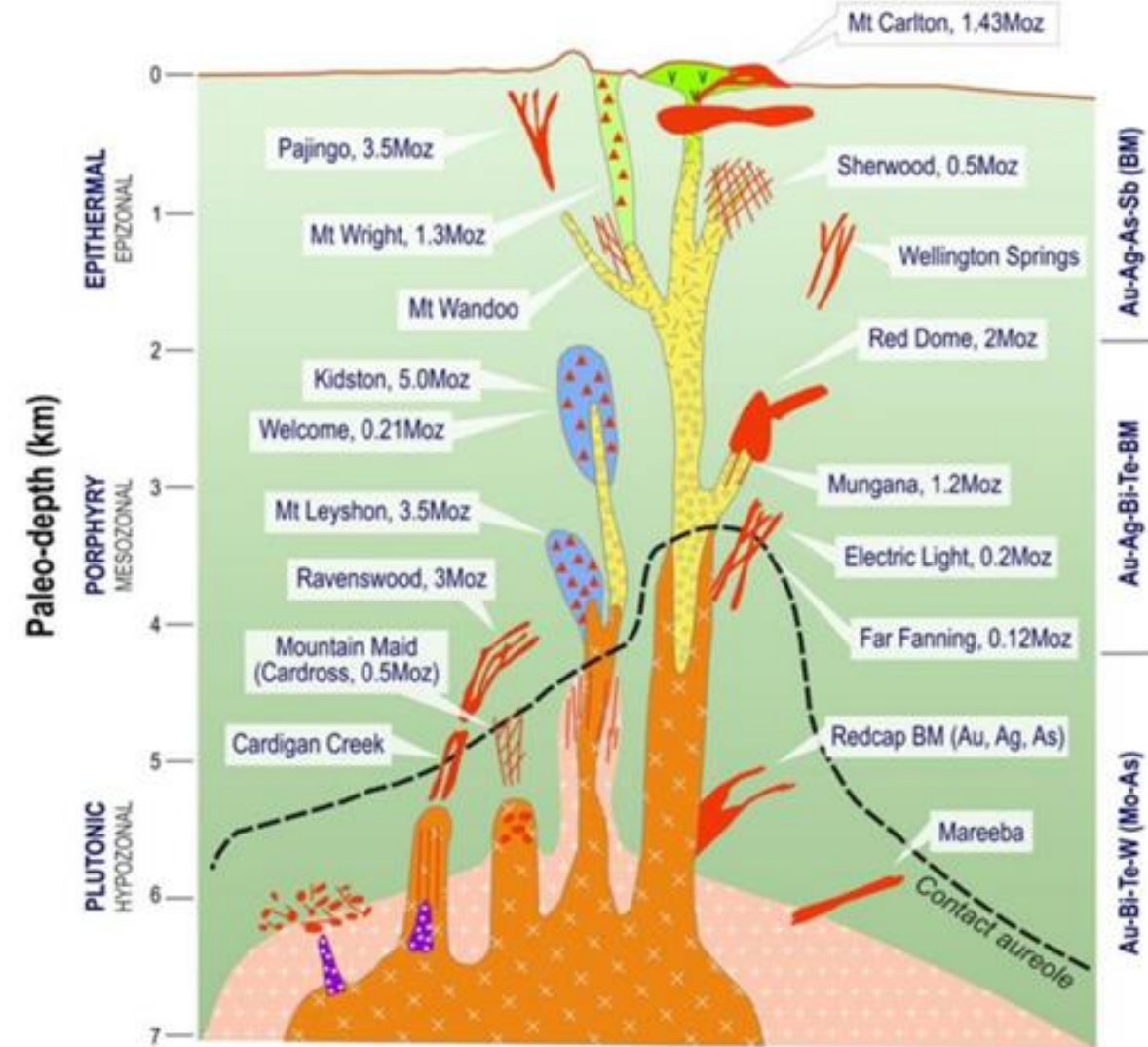


- GSN has assembled >1,000km<sup>2</sup> surrounding EVN's Mt Carlton >1Moz gold, silver, and copper mine<sup>1</sup>
- GSN has marshalled exploration infrastructure and a team of expert geologists, geochemists and academics
- Ranking of targets underway for planned drilling

<sup>1</sup>Refer ASX:EVN pre-mining resource statement 22/9/2012

# QLD: Intrusive Related Gold Systems

- Tectonic subduction zone creating porphyry intrusions and >20Moz related gold mineralisation
- Polymetallic systems with credits for gold, copper, silver and moly
- Multiple mineralisation styles possible within large landholding
- Excellent outcrop and metal zonation enable discovery using methodical geochemical and alteration mapping



## LEGEND

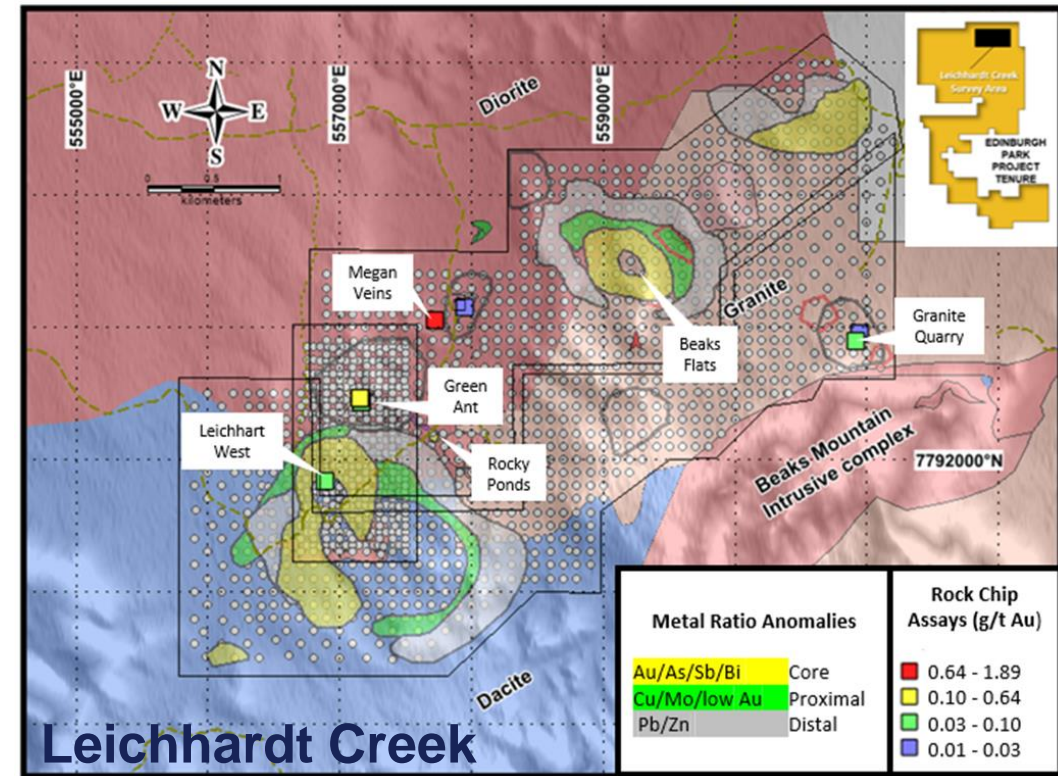
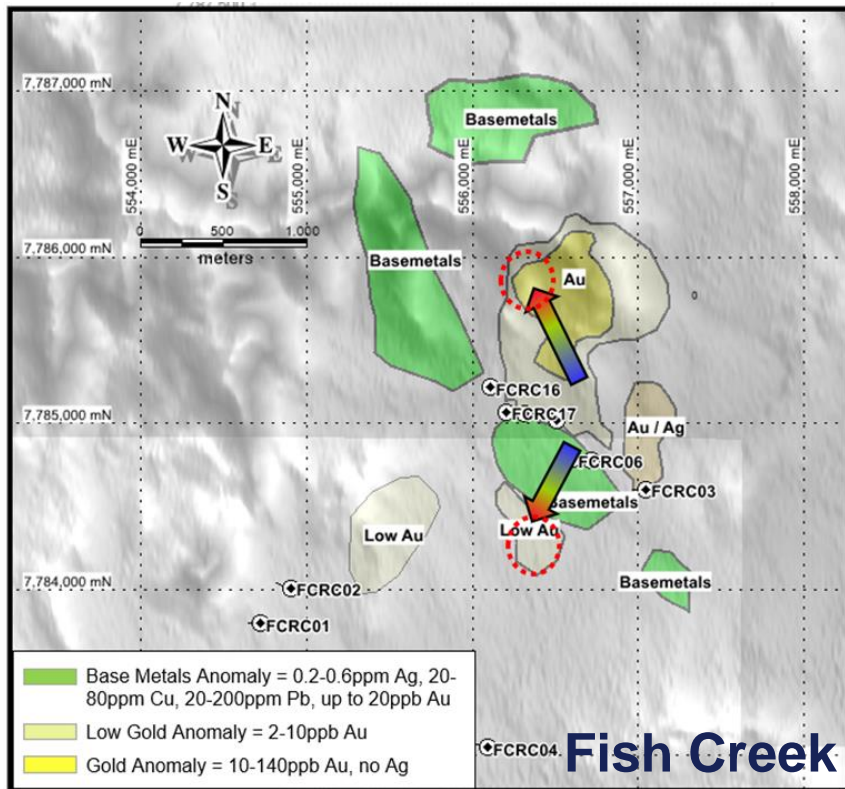
- |                     |                       |                      |
|---------------------|-----------------------|----------------------|
| Dome                | Porphyritic granitoid | Diatreme breccia     |
| Flow-banded         | Aplite-pegmatite      | Sub-volcanic breccia |
| Porphyry            | Granitoid             | Contact Aureole      |
| replacement / skarn | disseminated          |                      |
| breccia             | vein network          |                      |
| stockwork           | vein                  |                      |



# QLD: Edinburgh Park Exploration



- Hyperspectral survey co-funded by EVN illuminated 19 targets<sup>1</sup>
- Mapping and soil sampling has identified alteration and metal zonation consistent with an HS system at Fish Creek<sup>2</sup> and a large IRGS system at Leichhardt Creek<sup>3</sup>
- Geologists in the field now ground truthing and ranking anomalies



<sup>1</sup>Refer to ASX Announcements 27/5/20 for the hyperspectral survey; <sup>2</sup> 14/4/21 for the Fish Creek soil survey; and <sup>3</sup> 18/3/21 for the Leichhardt Creek soil survey

# Why GSN?



- ✓ Strategic landholdings in Tier 1 Australian gold districts
- ✓ Genuine potential for major gold, copper, silver and nickel discoveries
- ✓ Value proposition enhanced by hungry neighbouring mills
- ✓ Quality Board with skin in the game and experienced exploration teams
- ✓ Active exploration programs underway with strong results pipeline

# Contact

**John Terpu**  
Executive Chairman

T: +61 8 9240 4111  
E: [admin@gsml.com.au](mailto:admin@gsml.com.au)

[www.gsml.com.au](http://www.gsml.com.au)

**Sean Gregory**  
Chief Executive Officer

Suite 4, 213 Balcatta Rd  
BALCATTWA WA 6021

# Competent Persons Statement and Disclaimer



Deposit	Competent Person	Employer	Professional Institute
Southern Star, Cox's Find (2020-21) and Mon Ami (2020-21) Exploration Results	Simon Buswell-Smith	Great Southern Mining Ltd	MAIG
Edinburgh Park (2020), Cox's Find (2019) and Mon Ami (2019) Exploration Results	Dr Bryce Healy	Noventum Group Pty Ltd	MAIG
Edinburgh Park (2021)	Octavio Garcia	Great Southern Mining Ltd	MAIG
Mon Ami Mineral Resource	Dr Michael Cunningham	SRK Consulting (Australasia) Pty Ltd	MAusIMM, MAIG

## Competent Persons Statement

The information in this report that relates Exploration Results and Mineral Resources is based on the information of the Competent Persons listed in the table above. Each of the Competent Persons have sufficient experience relevant to the style of mineralisation and type of deposit under consideration and to the activity they are undertaking to qualify as Competent Persons under the JORC Code (2012). For new information each consent to the inclusion in the report of the matters based on his information in the form and context in which they occur. Previously announced information is cross referenced to the original announcements. In these cases, the Company is not aware of any new information or data that materially affects the information presented and that the technical parameters underpinning the estimates continue to apply and have not materially changed. The Company confirms that the form and context in which the Competent Persons findings are presented have not been materially modified from the original market announcements.

**Disclaimer:** No representation or warranty, express or implied, is made by the Company that the material contained in this presentation will be achieved or proved correct. Except for statutory liability which cannot be excluded, each of the Company, its directors, officers, employees, advisors or agents expressly disclaims any responsibility for the accuracy or completeness of the statements made in the presentation and excludes all liability whatsoever (including in negligence) for any loss or damage which may be suffered by any person as a consequence of any information in this presentation or any effort or omission therefrom. Any opinions expressed in the presentation are subject to change without notice.

**Forward Looking Statements:** Forward- looking statements are only predictions and are not guaranteed. They are subject to known and unknown risks, uncertainties and assumptions, some of which are outside the control of the Company. Past performance is not necessarily a guide to future performance and no representation or warranty is made as to the likelihood of achievement or reasonableness of any forward-looking statements or other forecast. The occurrence of events in the future are subject to risks, uncertainties and other factors that may cause the Company's actual results, performance or achievements to differ from those referred to in this announcement. Given these uncertainties, recipients are cautioned not to place reliance on forward looking statements. Any forward- looking statements in this announcement speak only at the date of issue of this announcement. Subject to any continuing obligations under applicable law and the ASX Listing Rules, the Company, its directors, officers, employees and agents do not give any assurance or guarantee that the occurrence of the events referred to in this announcement will occur as contemplate. Statements regarding the Company's plans with respect to Mineral Resources, exploration programs and future developments are forward-looking statements. There can be no assurance that the Company's plans will proceed at stated times in the future. Additionally, future drilling programs and outcomes presented are based on current estimates using information available at the time of the document's preparation. There is no guarantee that the programs will confirm the presence of additional mineral resources. Any opinions expressed in the presentation are subject to change without notice.