



# Time to quantify gold discoveries

RIU Explorers Conference Presentation • February 2024

ASX:GSN

# Disclaimer

Deposit	Competent Person	Employer	Professional Institute
Duketon, East Laverton and Mon Ami Exploration Results and Geological Interpretation	Rachel Backus	Resourceful Exploration Services Pty Ltd	AIG, AUSIMM
Mon Ami Mineral Resource	Dr Michael Cunningham	SRK Consulting (Australasia) Pty Ltd	MAusIMM, MAIG
Edinburgh Park Project	Rachel Backus	Resourceful Exploration Services Pty Ltd	AIG, AUSIMM

## Competent Persons Statement

The information in this report that relates Exploration Results and Mineral Resources is based on the information of the Competent Persons listed in the table above. Each of the Competent Persons have sufficient experience relevant to the style of mineralisation and type of deposit under consideration and to the activity they are undertaking to qualify as Competent Persons under the JORC Code 2012. For new information, each consents to the inclusion in the report of the matters based on his information in the form and context in which they occur. Previously announced information is cross referenced to the original announcements. In these cases, the Company is not aware of any new information or data that materially affects the information presented and that the technical parameters underpinning the estimates continue to apply and have not materially changed. The Company confirms that the form and context in which the Competent Persons findings are presented have not been materially modified from the original market announcements of (GSN 25/1/19, 12/8/20, 2/3/21, 14/4/21, 21/7/21, 21/9/21, 5/10/21, 11/10/21, 28/10/21, 13/12/21, 17/1/22, 9/3/22, 31/3/22, 15/6/22, 29/6/22, 5/7/22, 8/11/22, 13/12/22, 27/3/23, 16/5/23, 21/6/23, 9/10/23, 9/11/23 and 31/1/24. References to ASX RRL announcements of 18/1/11, 8/3/11, 6/4/21, 31/3/22 are noted in the presentation).

ASX announcements are available on the Company's website at [www.gsml.com.au](http://www.gsml.com.au)

## Disclaimer

No representation or warranty, express or implied, is made by the Company that the material contained in this presentation will be achieved or proved correct. Except for statutory liability which cannot be excluded, each of the Company, its directors, officers, employees, advisors or agents expressly disclaims any responsibility for the accuracy or completeness of the statements made in the presentation and excludes all liability whatsoever (including in negligence) for any loss or damage which may be suffered by any person as a consequence of any information in his presentation or any effort or omission therefrom. Any opinions expressed in the presentation are subject to change without notice. The distribution of this presentation (including an electronic copy) outside of Australia (including the United States) may be restricted by law and any such restrictions should be observed. Any non-compliance with these restrictions may contravene applicable securities laws.

## Forward Looking Statements

This presentation has been prepared by Great Southern Mining Limited and contains background information about Great Southern Mining Limited, current at the date of this presentation. The presentation is in summary form and does not purport to be all inclusive or complete. Recipients should conduct their own investigations and perform their own analysis in order to satisfy themselves as to the accuracy and completeness of the information, statements and opinions contained in this presentation. This presentation is for information purposes only. Neither this presentation nor the information in it constitutes an offer, invitation, solicitation or recommendation in relation to the purchase or sale of shares. This presentation does not constitute investment advice and has been prepared without taking into account the recipient's investment objectives, financial circumstances or particular needs and the opinions and recommendations in this presentation are not intended to represent recommendations of particular persons. Recipients should seek professional advice when deciding if an investment is appropriate. All securities transactions involve risks, which include (among others) the risk of adverse or unanticipated market, financial or political developments. To the fullest extent permitted by law, Great Southern Mining Limited and its officers, employees, agents and advisers do not make any representation or warranty, express or implied, as to the currency, accuracy, reliability or completeness of any information, statement, opinions, estimates, forecasts or other representations contained in this presentation. No responsibility for any errors or omissions from this presentation arising out of negligence or otherwise is accepted.

# Investment Highlights



Advanced gold discovery company



Primed for a rising gold price environment



All assets located within 40km of existing mineral processing infrastructure



Major exploration programs planned for 2024 – significant newsflow



Quality Board with skin in the game and a high-skilled exploration team



## Queensland

Belt scale project in North Queensland Copper-Gold District (>20Moz)

### ■ Edinburgh Park

75% Gold Fields earn-in commenced

## Western Australia

High quality gold projects in Laverton Gold District (>25Moz)

All projects 100% owned

### ■ Duketon Gold

### ■ Mon Ami

### ■ East Laverton Nickel



# Platform set for a big 2024

## 2023 Achievements

### Queensland

- A\$15M farm-in deal signed with Gold Fields on Edinburgh Park Project

### Western Australia

- Southern Star gold mineralisation extended by +65m at depth, including:
  - **13m at 2.52 g/t Au** from 144m in hole 23SSRC004
- New gold mineralisation intercepted up to 1.2km north of Southern Star, including:
  - **13m at 2.16 g/t Au** from 57m in hole 23SSRC010
- Golden Boulder main zone mineralised trend extended to 1.6km strike, including:
  - **12m at 1.3 g/t Au** from 48m in hole 23GBAC022
- Golden Boulder east zone mineralisation defined over +1km with up to 4km of target stratigraphy, including:
  - **8m @ 3.9 g/t Au** from 44m in hole 23GBAC008



## 2024 Outlook

### Queensland

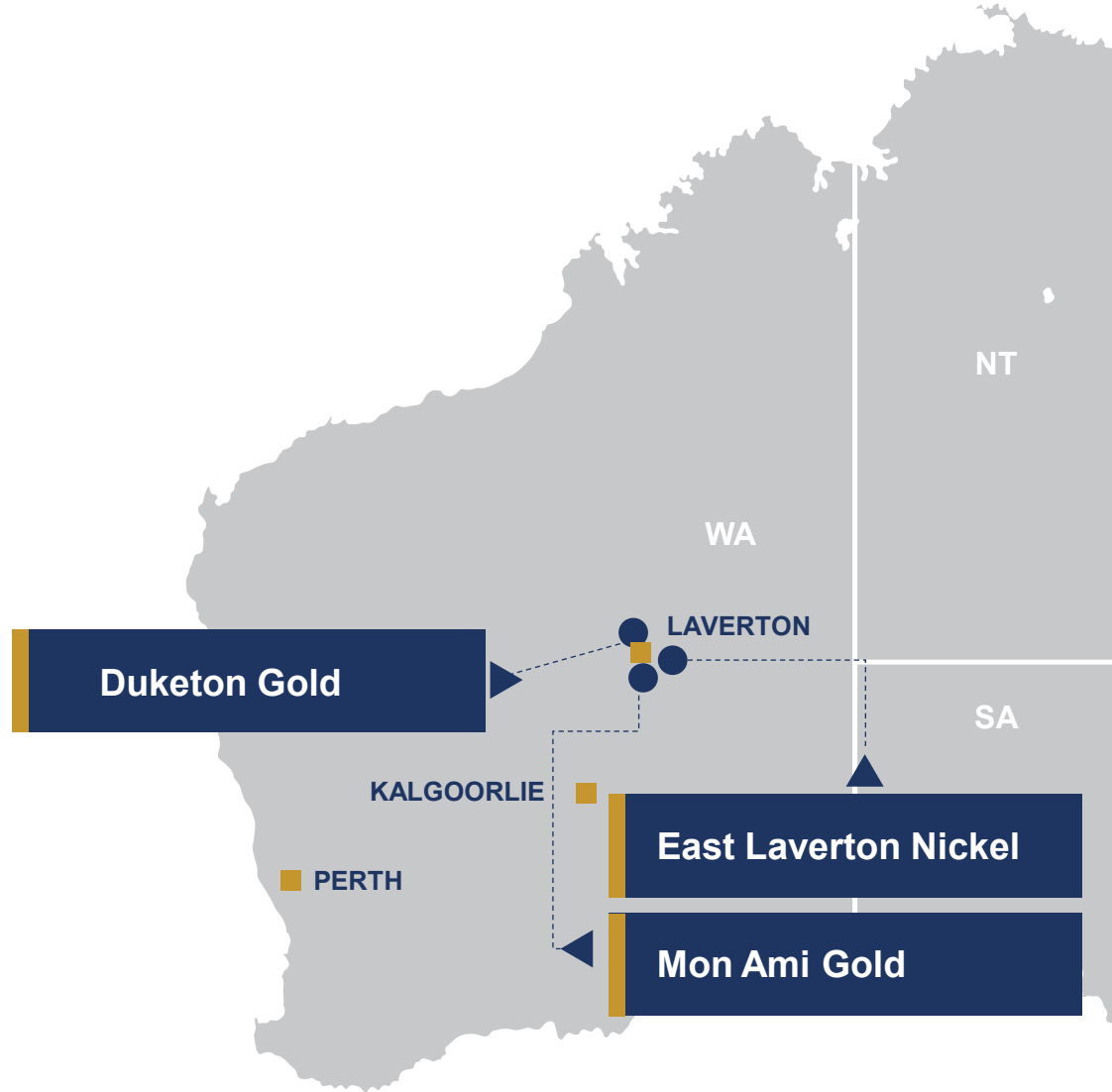
- Gold Fields drilling of large-scale epithermal and porphyry Au-Cu-Ag targets expected to commence in Q2 2024

### Western Australia

Duketon Gold Project: Simple Objective - to convert advanced prospects into economic resources

- Golden Boulder: Infill and extensional drilling over at least 4km of prospective strike
- Southern Star: Expand upon current mineralised zone which extends over 700m strike and to ~160m depth
- Southern Star North: Follow up of newly defined northern extensions with ~1.5km of strike to test
- Amy Clarke: Drill test anomalous gold zone which extends over ~5km with intercepts including **8m at 6.7 g/t Au** from 32m

# Advanced Western Australia Projects





# Duketon Gold Project

## Three advanced target areas

- All with high grade intercepts
- All with extensive untested strike
- All located on highly mineralised structures with defined resources

### Southern Star

- **Granted Mining Licence**
- **1.9km** gold mineralised trend, including 700m of contiguous mineralisation
- Gold intercepts<sup>1</sup> include
  - 68m @ 1.9 g/t Au from 61m
  - 59m @ 2.1 g/t Au from 53m.
- Only 3km from 390k oz Ben Hur open pit

**Plus, a pipeline of earlier stage target areas within a 388 km<sup>2</sup> landholding**

1 - Refer to GSN:ASX announcements 5/10/21, 11/10/21, 23/8/21, 2/8/21 and 29/6/22.

### Amy Clarke

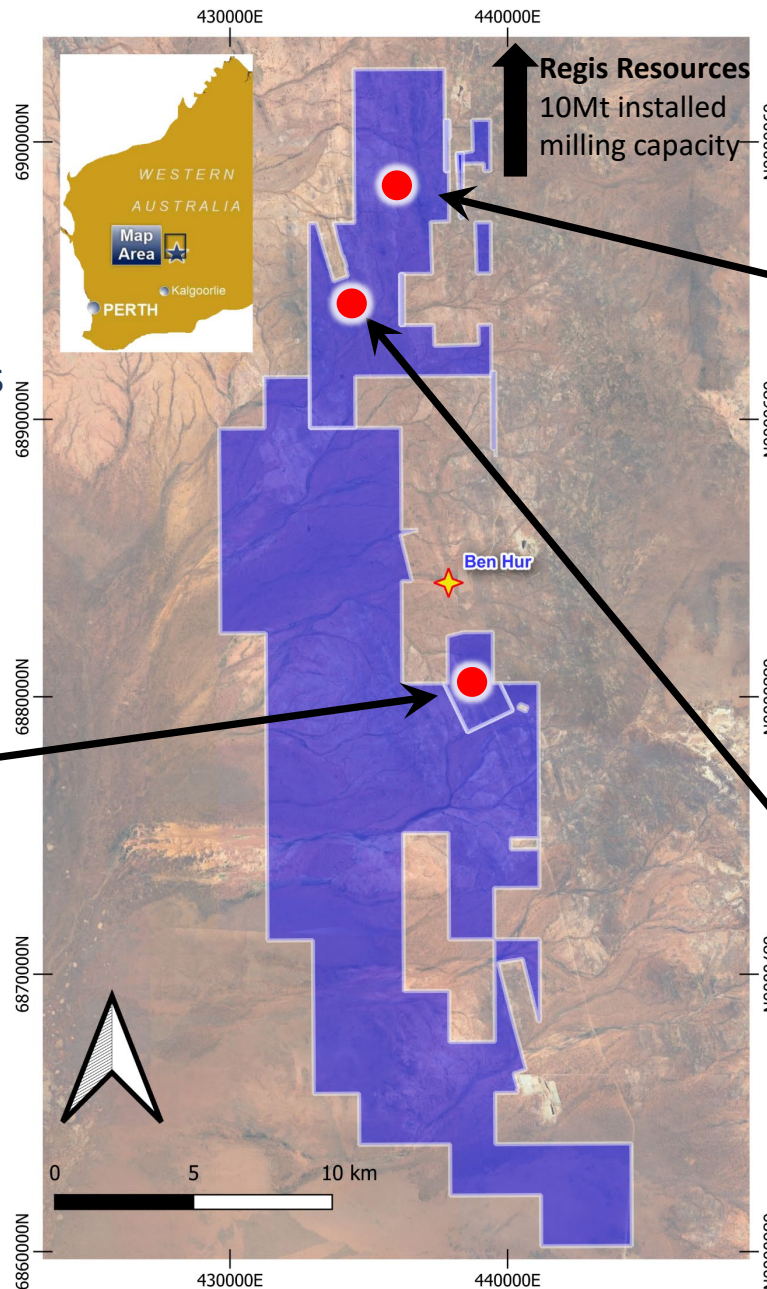
- **Over 5km** of anomalous strike with at least 2 mineralised trends
- Gold intercepts<sup>2</sup> include
  - 8m @ 6.7 g/t Au from 32m
  - 4m @ 2.1 g/t Au from surface
- Virtually, unexplored and along strike from 320 koz Eristoun open pit

### Golden Boulder

- **Over 4km** of anomalous strike
- Contains ~50 shallow historical shafts
- Gold intercepts<sup>3</sup> include:
  - 8m @ 3.9 g/t Au from 44m
  - 5m @ 3.3 g/t Au from 49m

2 - Refer to GSN: ASX announcements 13/4/22

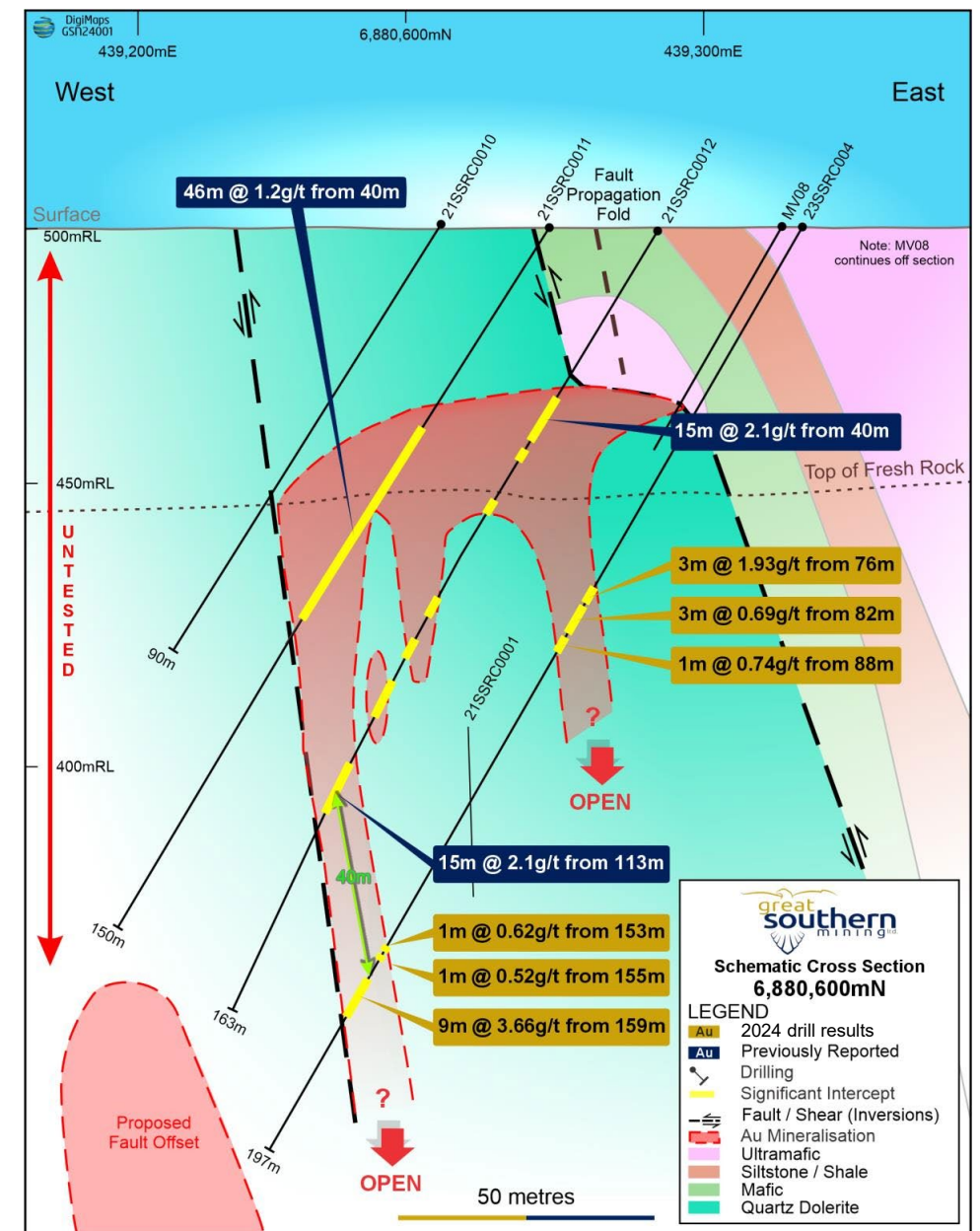
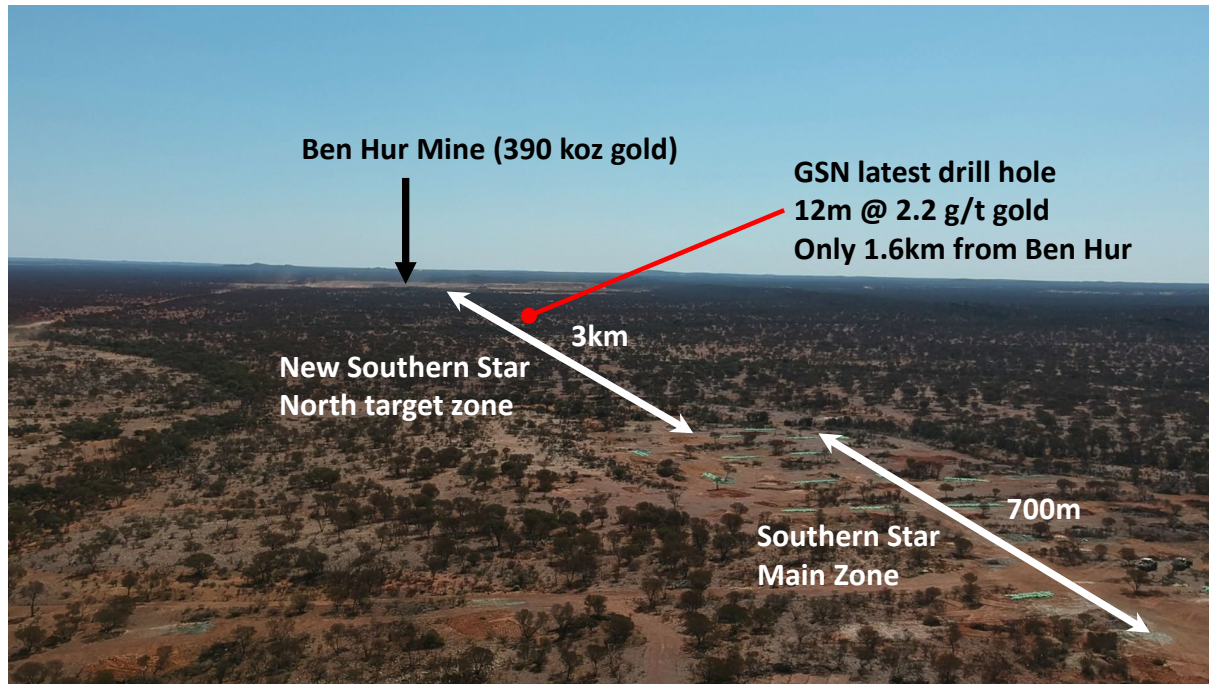
3 - Refer to GSN: ASX announcements 16/5/23



# Southern Star

## Advanced Gold Prospect

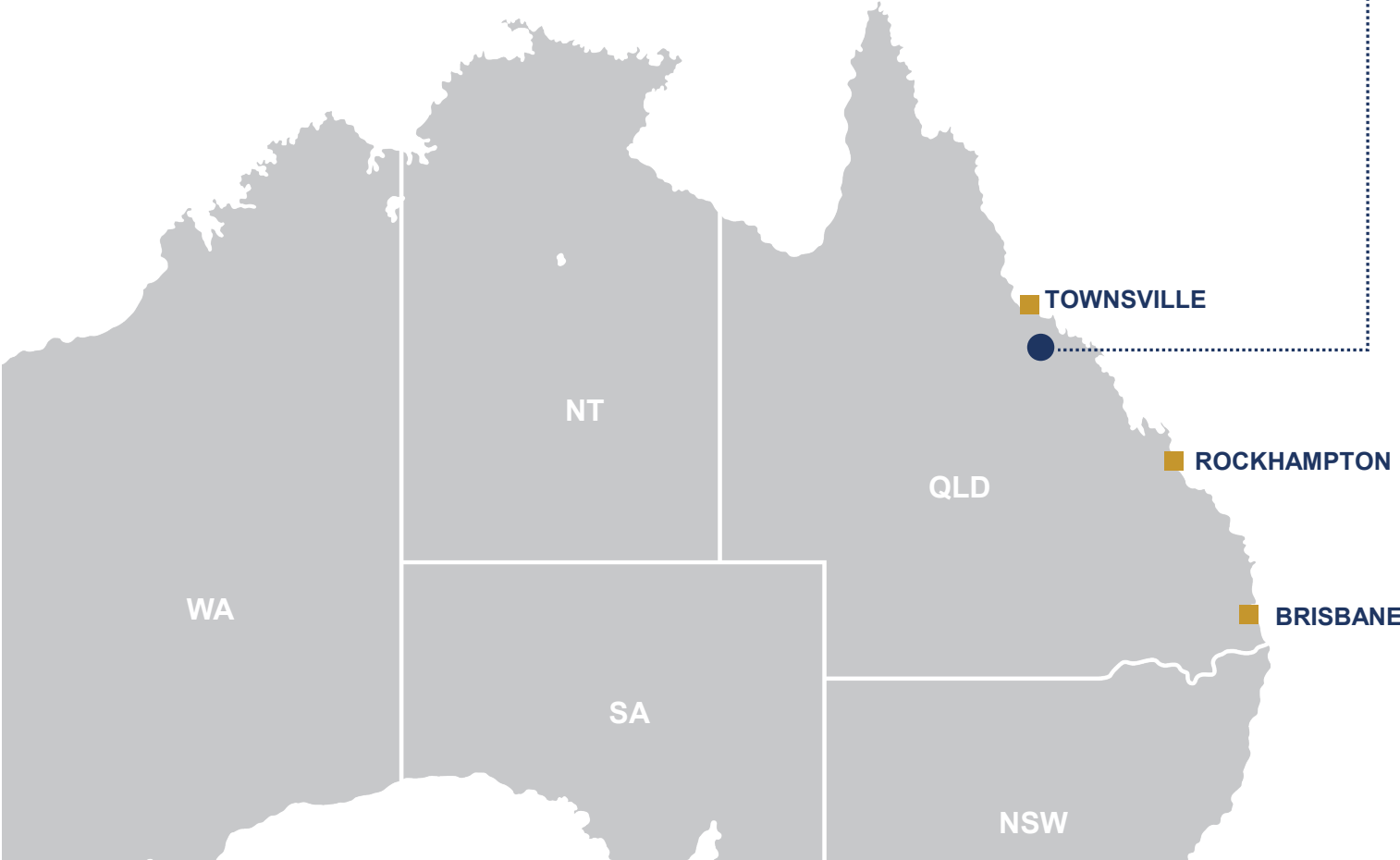
- 11km of prospective strike
- Mineralisation in drilling over 1.9km
- 700m of defined contiguous mineralisation
- Only shallow drilled to ~160m below surface
- Mineralisation open in nearly every direction
- 3km from Regis Resources Ben Hur mine



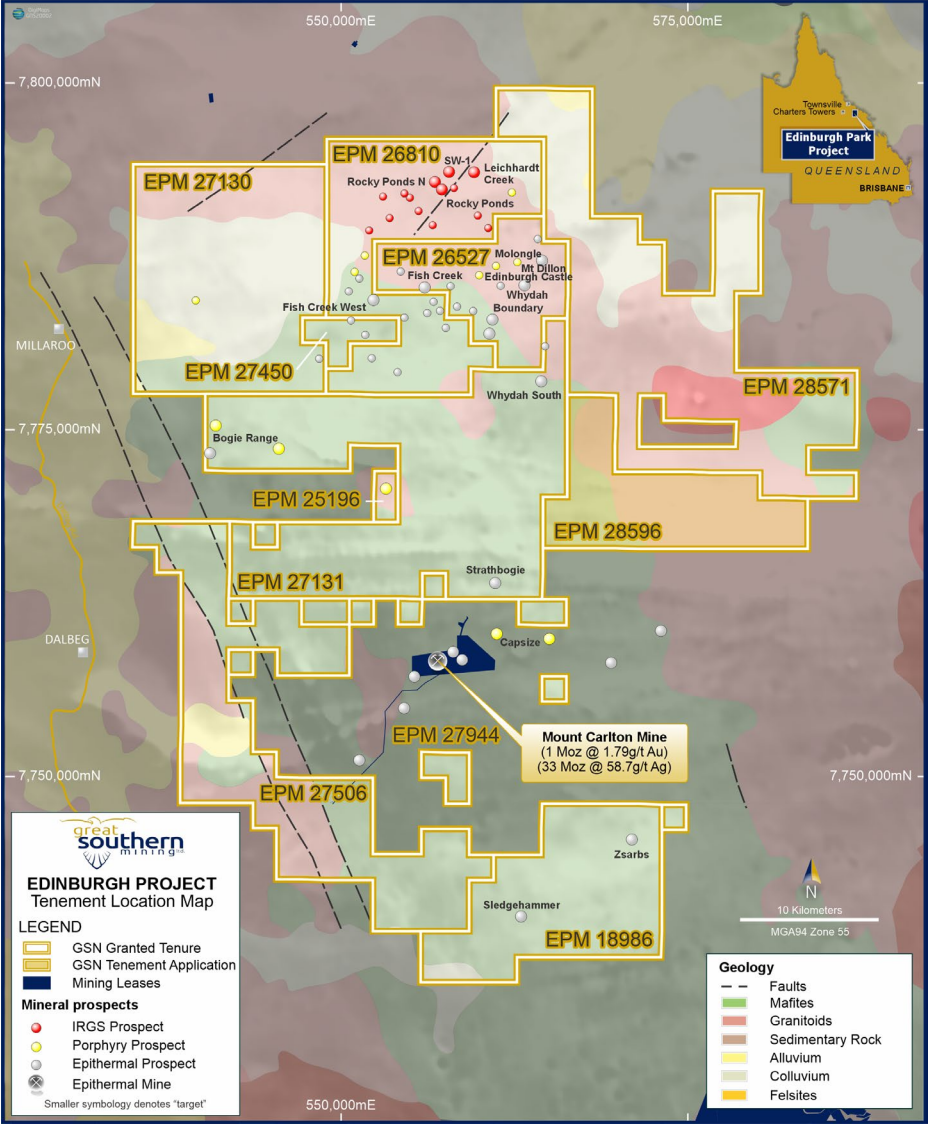
Refer to further commentary in the GSN:ASX announcement of 31 January 2024



# Great Southern's Queensland Project



## Edinburgh Park Project



GSN's Edinburgh Park Project highlighting proximity to Mt Carlton Mine.



# Edinburgh Park

## Gold Fields Earn-In, Credentialed Partner for Tier One Discoveries

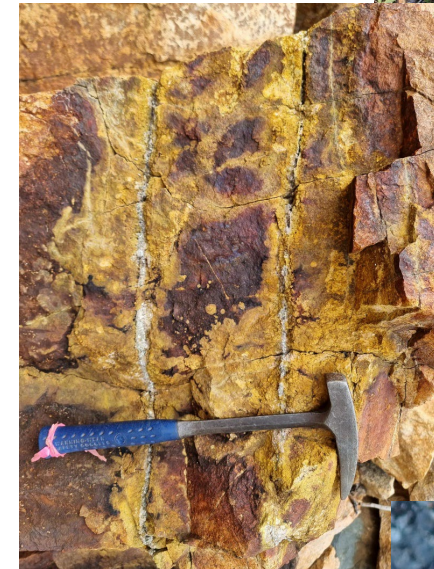
- Belt scale play with ~1,750km<sup>2</sup> tenure surrounding 1.7Moz Au Eq Mt Carlton Mine
- Prospective for gold-copper porphyry mineralisation, as well as high and low sulphidation gold-silver-copper mineralisation
- **29 targets** identified by GSN<sup>1</sup>
- High priority targets within the Molongle, Mt Dillion, Leichhardt Creek and Sledgehammer target areas

### Gold Fields Earn-in

- Gold Fields spending up to **A\$15m over 6 years** to earn a 75% interest<sup>2</sup>
  - **Minimum spend of A\$2.5m** in the first 2 years
- Gold Fields also subscribed to **A\$1m GSN shares** for a 5.1% holding
- Gold Fields is the ideal partner with experience and funding to discover major porphyry/epithermal deposits
- Geophysics commenced in 2023 and drilling expected in second quarter of 2024

<sup>1</sup> Refer to GSN:ASX announcement date 29 June 2023

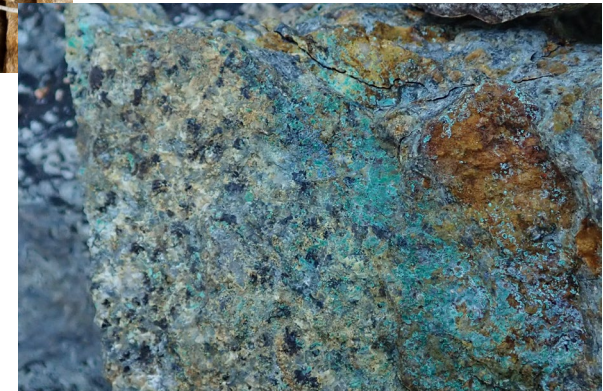
<sup>2</sup> Refer to GSN:ASX announcement date 9 October 2023



Quartz, pyrite fracture veining at Leichhardt Creek target



Epithermal style quartz stockworks at Megan Veins target, with rock chip samples grading up to 10g/t gold



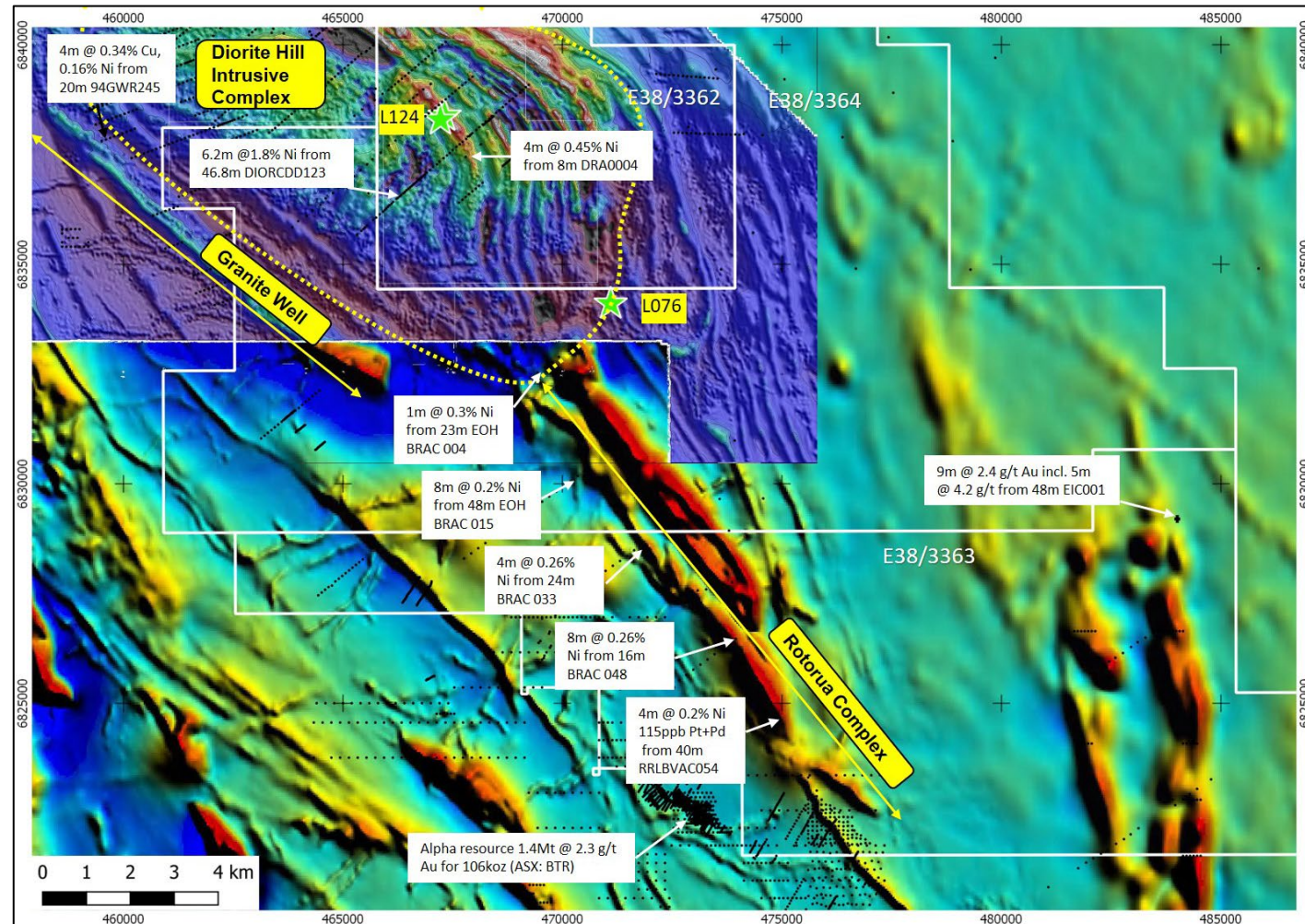
Copper and silver rich porphyry specimen from Molongle Creek target



# East Laverton Project

## Nickel and Gold Potential

- Project area of 407km<sup>2</sup>
- Prospective for both intrusive magmatic and komatiitic nickel–copper–PGE mineralisation
- 4 conceptual target areas:
  - Diorite Hill layered intrusive
  - Rotorua Komatiite trend
  - Granite Well Komatiite trend
  - Karora Ultramafic trend
- Diorite Hill drilling program in late-2022 proved the right geology – follow up exploration required
- 14km of komatiite trends to be tested with EM in 2024
- Gold potential still to be tested
- Historic gold intercept of **9m @ 2.4g/t Au**, incl. **5m @ 4.2g/t Au** in the east, never followed up



Magnetic image highlighting the Rotorua and Granite Well targets with drillhole database displaying Newmont significant intersections along the edge Rotorua complex. Refer to Brightstar Resources (BTR) 2021 Annual Report for Alpha Gold Resource.



# Mon Ami Gold Project

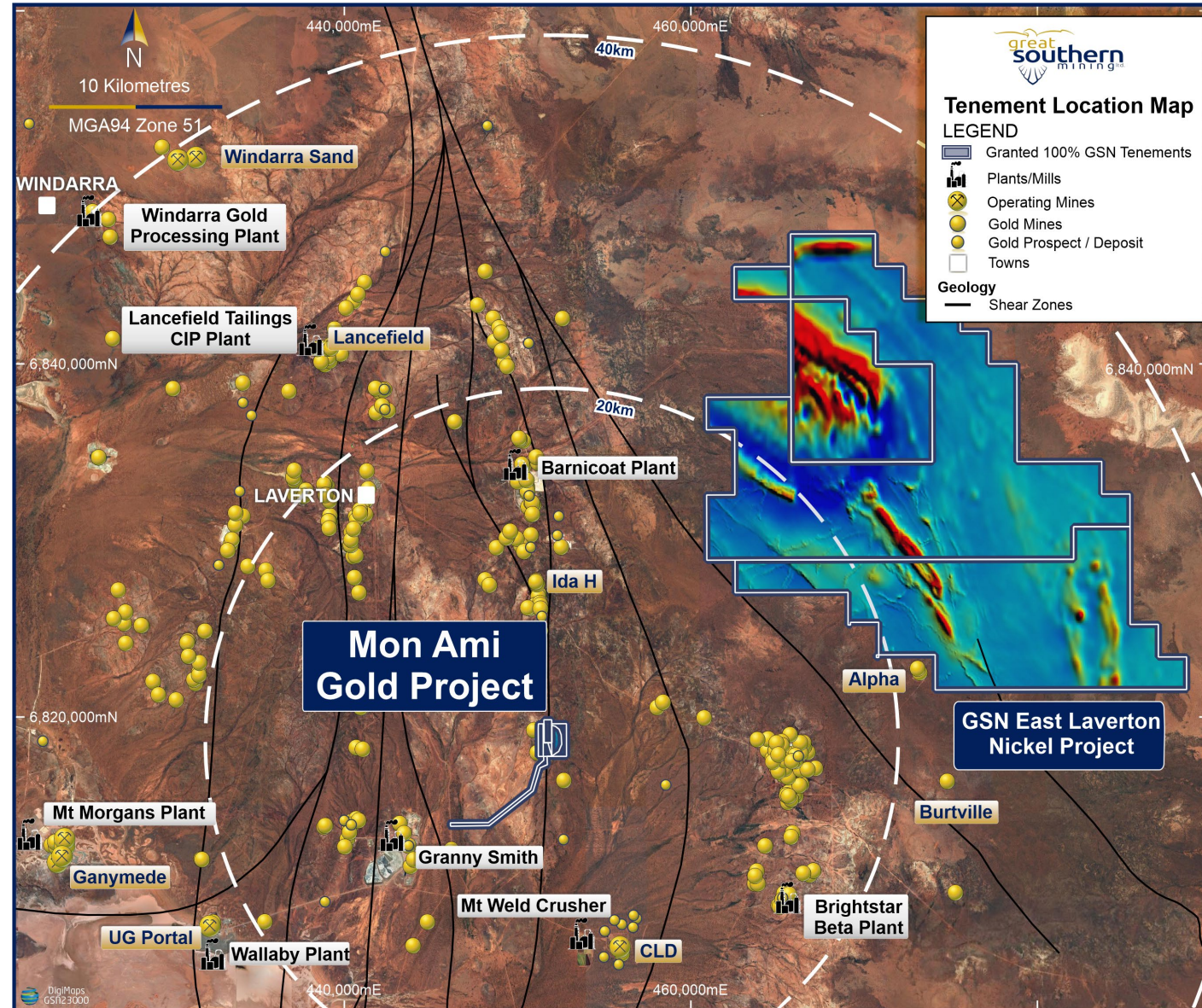
## Shovel Ready Gold Resource

- Established 1.56Mt @ 1.11g/t Au for 55koz Mineral Resource<sup>1</sup>

	COG (g/t)	Tonnage (Mt)	Grade (g/t Au)	Metal (Oz Au)
Indicated	0.5	1.41	1.16	52,500
Inferred	0.5	0.15	0.61	3,000
<b>Total</b>	<b>0.5</b>	<b>1.56</b>	<b>1.11</b>	<b>55,500</b>

- Shovel ready on a granted Mining License with requisite mining and environmental studies complete
- Permitted haul access route to nearest major highway
- Within trucking distance to at least three gold processing facilities

<sup>1</sup> Source: ASX announcement 21/7/21. The Company confirms that it is not aware of any new information or data that materially affects the information included in the previous market announcements regarding the MRE.





# Corporate Snapshot

**A\$14.3M**

Market Cap (at \$0.019 per share)

**755M**

Shares on Issue

**31.6M**

Options (\$0.10 ave. exercise price)

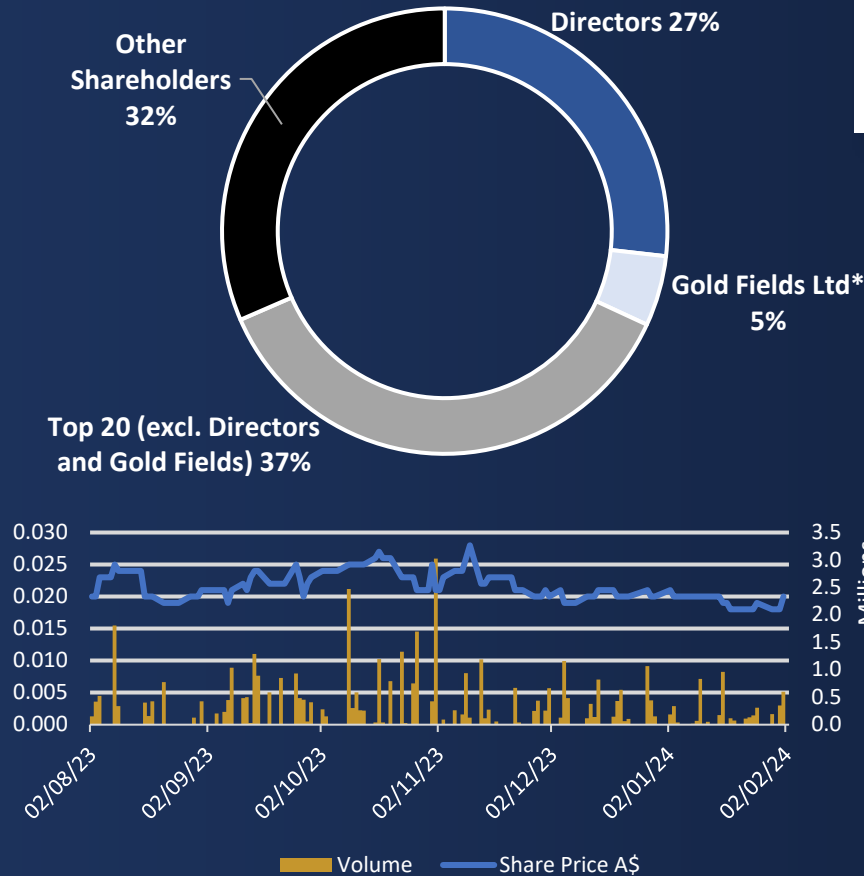
**A\$1.1M**

Cash (at 31 Dec 23,

**A\$0.2M**

Listed Investment (ASX:RRR share holding value at 12 Feb 2024)

## Shareholders



### BOARD OF DIRECTORS

#### John Terpu

Executive Chairman

Over 22 years' experience in the mining & exploration sector, through acquisition and investment in many projects. Founder of Conquest Mining which discovered the Mt Carlton mine and went on to become gold major Evolution Mining. As Chairman of Emerchants Ltd, drove the company's market cap from A\$1m to over A\$150m.

#### Matt Keane

Managing Director

Geologist with 25 years of experience in mining, exploration and financial markets, including 8 years as a Resources Analyst. Mr Keane's technical career incorporated 10 years with BHP across various commodity groups.

#### Matthew Blake

Non-Executive Director

Mr Blake has 25 years' experience in the financial services industry and with companies listed on the ASX. Executive Director of Javelin Minerals Limited and NED with Crowd Media Limited.

#### Andrew Caruso

Non-Executive Director

Mining executive with over 25 years' experience in the Australian and international mining industries, including significant corporate leadership and business development experience.



## Contact Us

**Matthew Keane**

Managing Director

**E:** [admin@gsml.com.au](mailto:admin@gsml.com.au)

**T:** 08 9240 4111

**ASX:GSN**