



CREATING VALUE THROUGH DISCOVERIES

RIU RESURGENCE CONFERENCE

SEPTEMBER 2020

SEAN GREGORY CEO



CORPORATE OVERVIEW

CAPITAL STRUCTURE

409M
SHARES ON ISSUE

150M
LISTED OPTIONS
Exercise Price \$0.05

\$47M
MARKET CAP
as at Sept. 14 2020 (11.5c)

\$3.1M
CASH
as at 30 June 2020

SHAREHOLDERS

Top 20 = *(excluding Directors)* **40%** *(incl. Directors)* **70%**

BOARD OF DIRECTORS AND MANGEMENT

Mr John Terpu

Executive Chairman

- *More than 20 years commercial and management experience*
- *Former MD of Conquest Mining Limited (now Evolution Mining Limited) for 12 years and involved in the discovery of the Mt Carlton gold/silver/copper project*

Mr Sean Gregory

Chief Executive Officer

- *More than 20 years experience as a geologist and project developer including Barra Resources (MD, NED), Min Res (GM Tech), MMX (GM Geology), BHP (Principal Geo)*
- *Track record of numerous successful mine developments and corporate transactions*

Ms. Kathleen Bozanic

Non-Executive Director

Mr Andrew Caruso

Non-Executive Director

Mr Mark Petricevic

Chief Financial Officer & Company Secretary

Actively exploring large strategic landholdings in Laverton and QLD

KEY ASSETS & FUNDAMENTALS

STRATEGIC LANDHOLDINGS IN PROLIFIC GOLD PROVINCES

STRATEGIC GOLD PROJECTS

Coxs's Find and Mon Ami in Laverton Gold District (>25Moz)
Edinburgh Park in North QLD Gold District (>20Moz)
Proximity of adjacent major producers leverage the value proposition

EXTENSIVE WORK PROGRAM

Just completed 3,000m at Mon Ami and 9,000m at Cox's Find with spectacular high-grade results.
Planning underway for ongoing exploration and large drilling programs

THE RIGHT TEAM

All supported with an experienced management team with discovery history, a proven track record in value creation and supportive, high quality board and shareholders

EXTENSIVE GOLD PORTFOLIO IN WORLD RENOWNED MINING DISTRICTS



COX'S FIND GOLD PROJECT

- Historic high-grade gold mine
- 77,000 ounces produced at 22 g/t gold
- <15,000m drilling to date
- Recent spectacular drilling hits
- Recent tenement acquisitions and applications expand opportunity to >50km²

MON AMI GOLD PROJECT

- Mineral Resource¹ of 1.1 Mt @ 1.7 g/t for 59koz Au
- Open along strike and at depth
- 95% average metallurgical recovery for oxide and transitional samples²
- <25kms from multiple gold processing operations

EDINBURGH PARK PROJECT

- Expansive landholding (>1,000km²) in proven Mt Carlton Province
- Multiple large epithermal, IRGS and porphyry systems identified with tier 1 discovery potential
- Multiple +1Moz discoveries in area

¹Refer to ASX Announcement 7/11/18 for the Mon Ami Mineral Resource

²Refer to ASX Announcement 25/1/19 for the Mon Ami Metallurgy Results

WA GOLD PROJECTS – CLOSE TO OPERATING MILLS



Our high-grade Cox's Find deposit is only 12km from Regis' low-grade Garden Well Mill

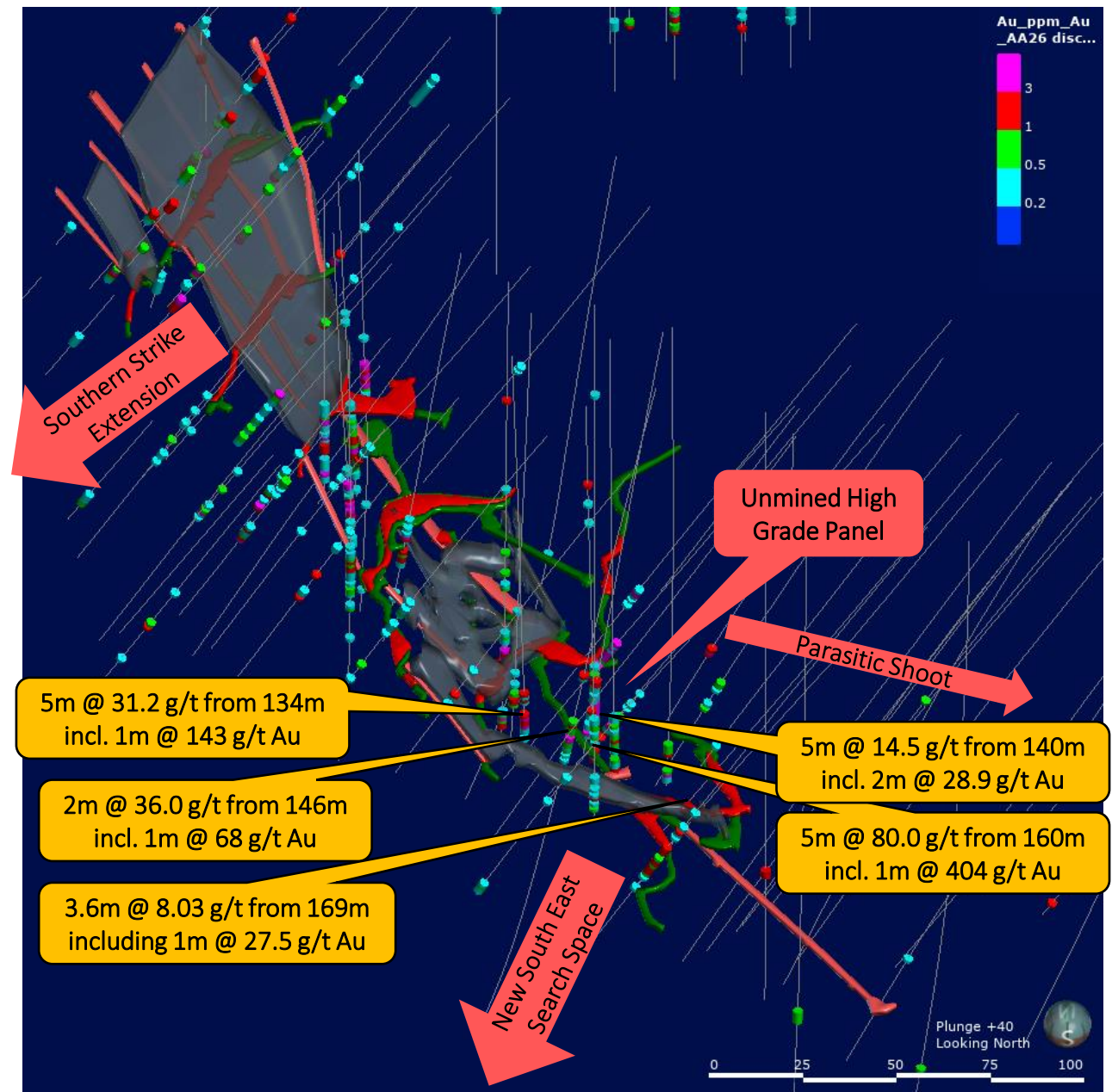
Mon Ami is only 14km from Goldfields Granny Smith Mill

Numerous other milling solutions within 150km

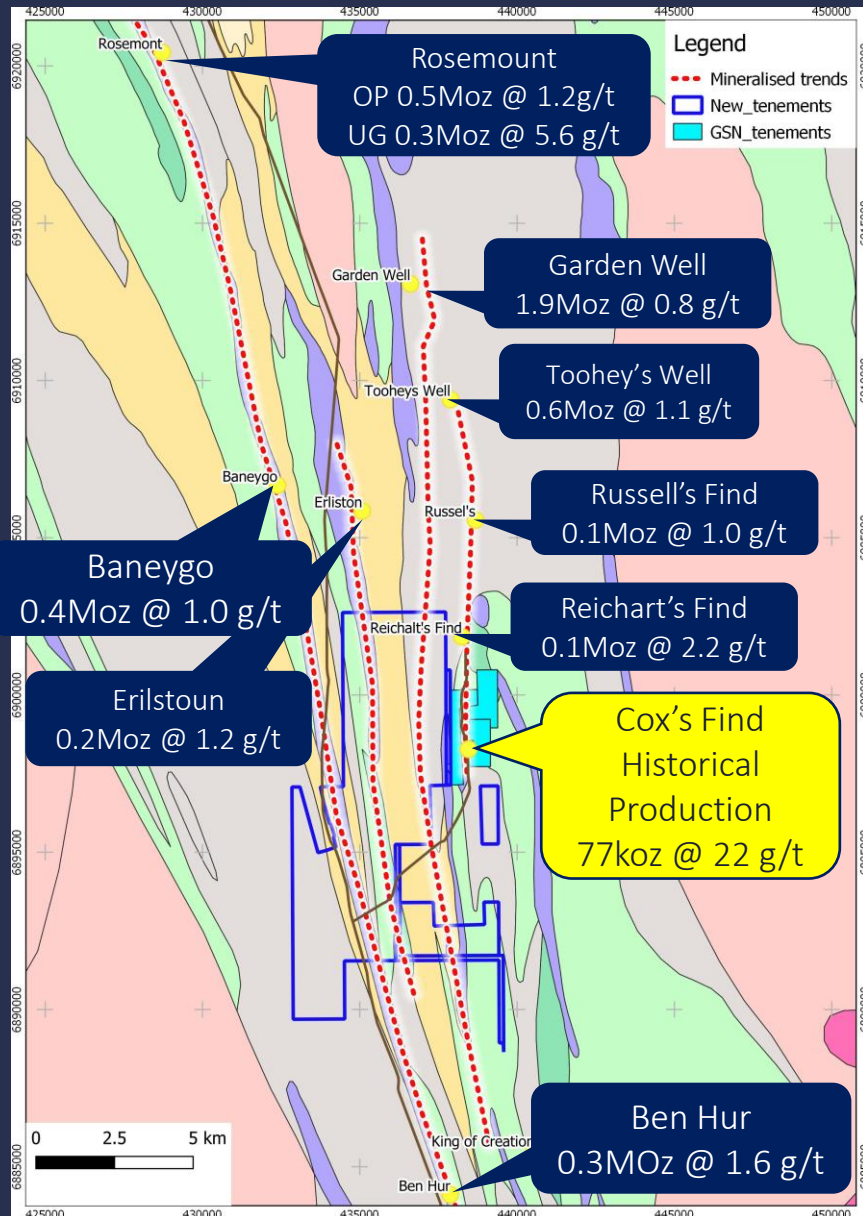
COX'S FIND – SPECTACULAR RECENT DRILL RESULTS

- Spectacular modern drill results¹ delineate unmined panel at level 5-6 of historical workings
- Near surface extensions identified along strike to the south
- New south-east search space for immediate follow up drilling

¹Refer to ASX Announcements 26/11/19, 4/12/19, 19/12/19, 29/7/20, 8/9/20 for details of Cox's Find drilling results



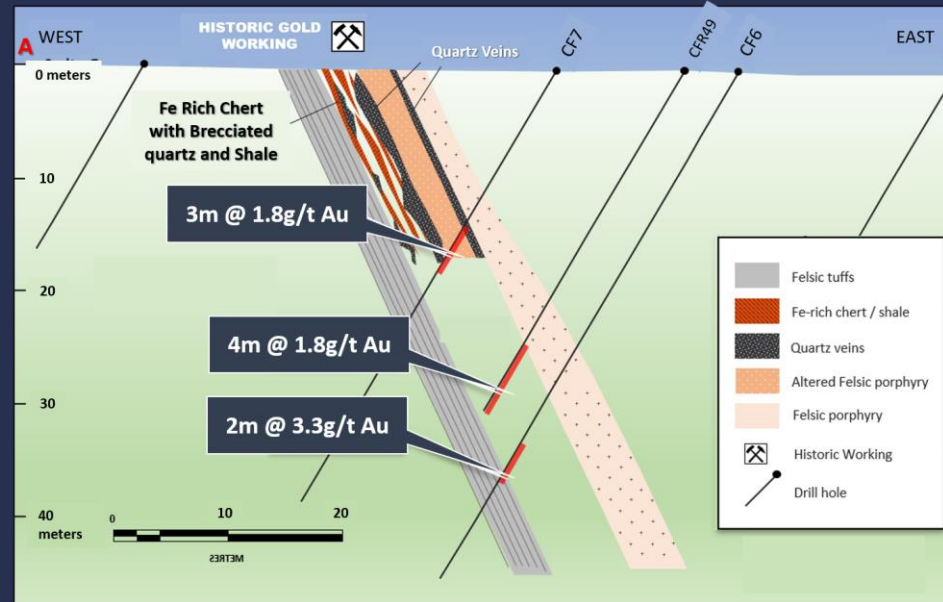
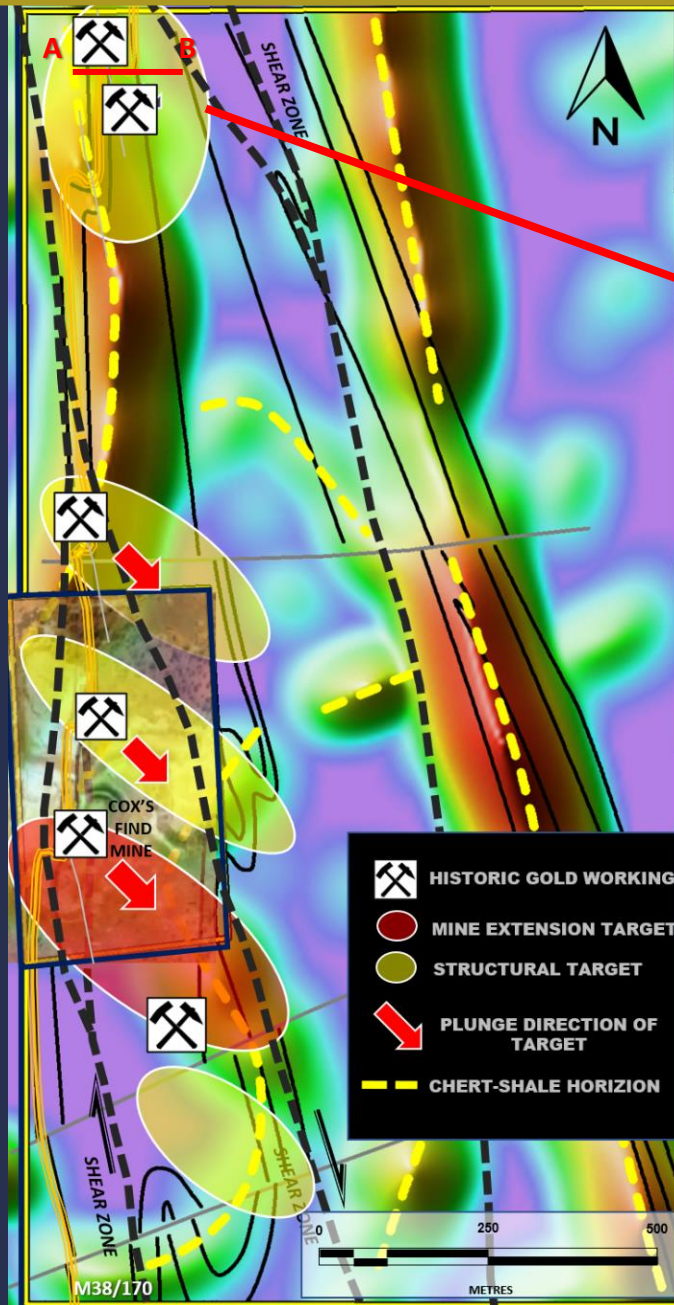
COX'S FIND GOLD PROJECT – REGIONAL GROUND POSITION



- Historical production **77,000 ounces at 22 g/t Au**
- Cox's Find is anomalously high grade and we will apply the exploration model to find lookalike deposits
- Recent tenement acquisitions and applications expand landholding to >50km² of underexplored ground in highly prospective belt

Annotated deposit ounces are Regis Resources' depleted Mineral Resources as at 31/3/20

COX'S FIND – NEAR MINE TARGETS



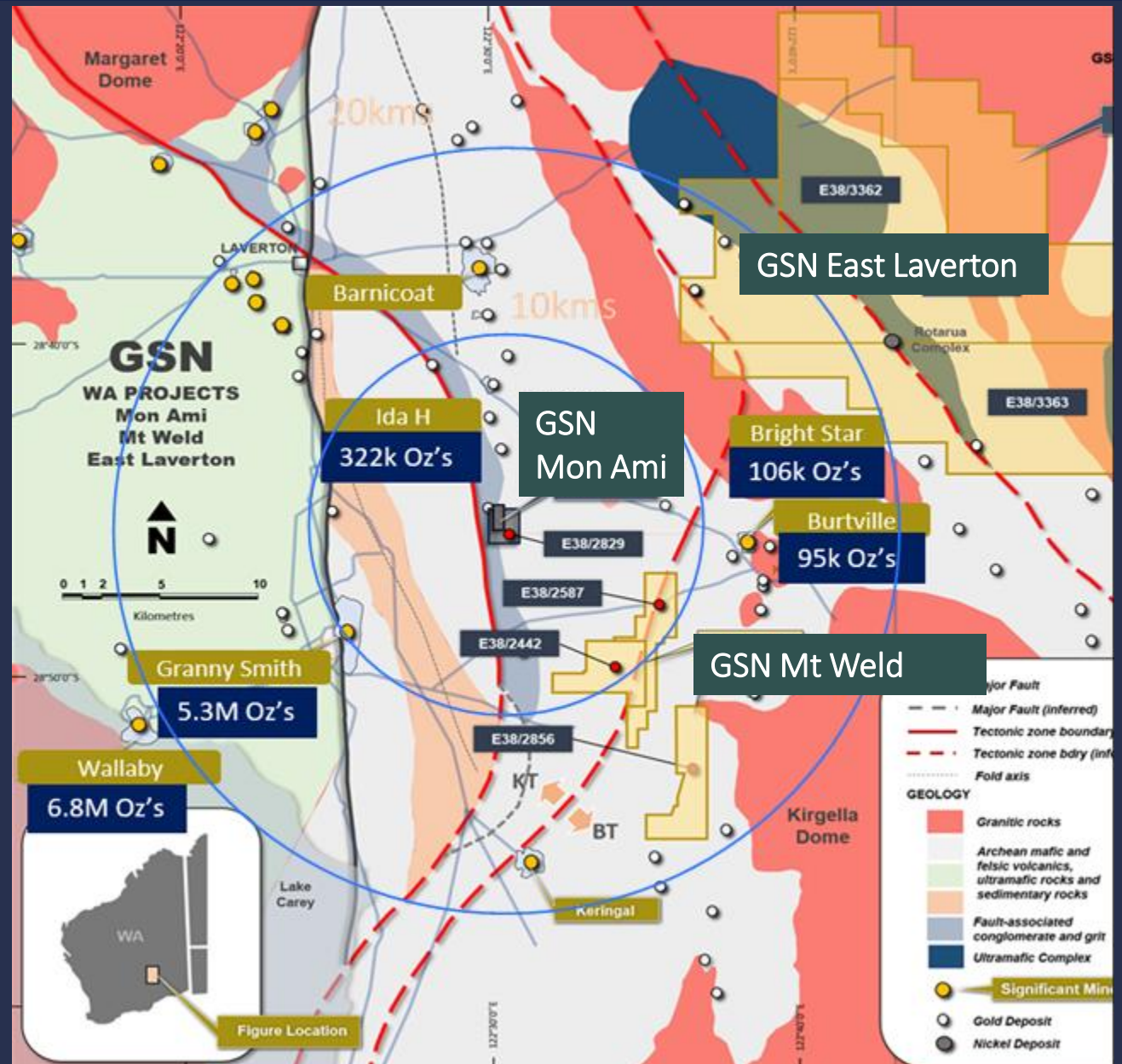
*Only 2 of 7 drill
ready near mine
targets tested to
date with
encouraging results*

- Structural Mapping by Model Earth identified 7 near mine structures for gold accumulation
- Drag folding adjacent to intersecting cross cutting shear zones is the target geology
- Provides an exploration model for recent larger adjacent tenement acquisitions and applications

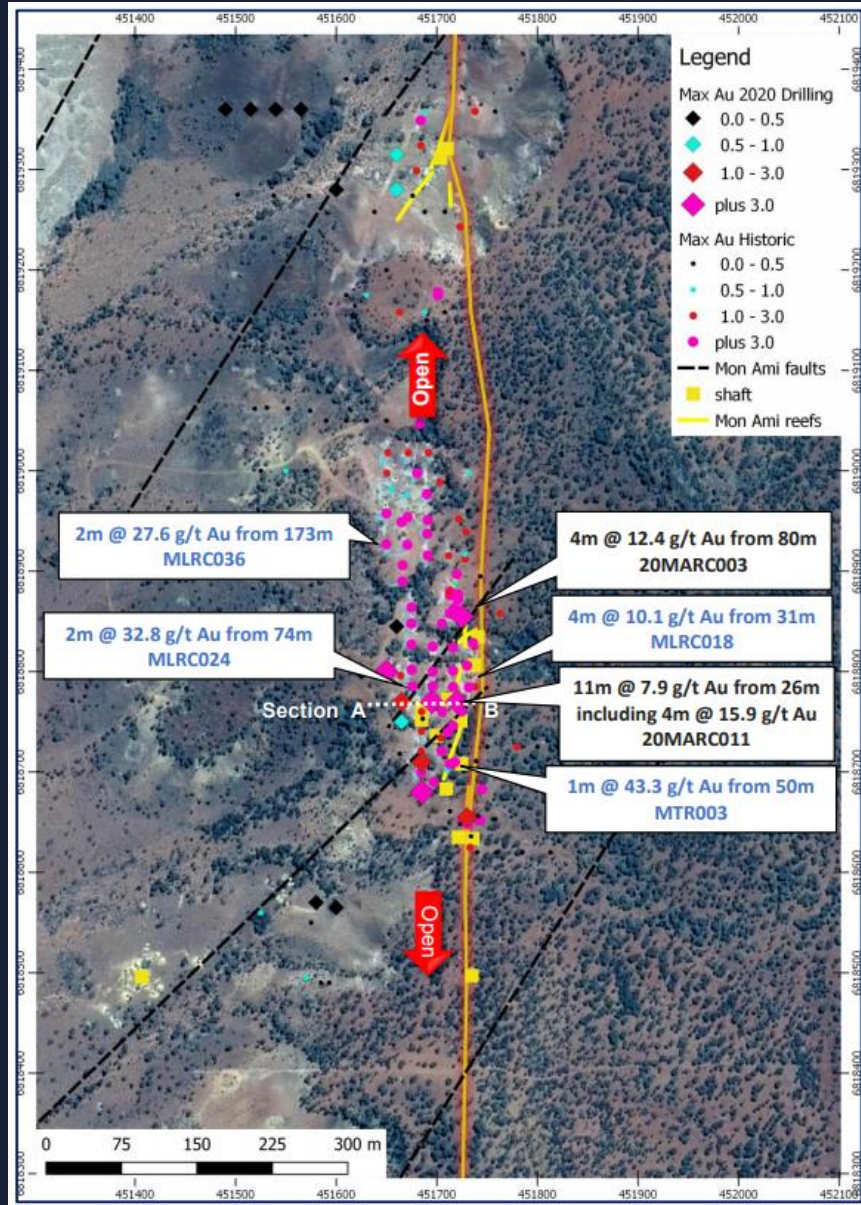
MON AMI GOLD PROJECT

- Located in the renowned Laverton gold field with over 25M ounces of gold discovered to date
- 14 km to Goldfields' Granny Smith mill which is running at 50% capacity¹
- GSN's regional land package also includes East Laverton (Ni, Au) and Mt Weld (Sc, Co, Ni)

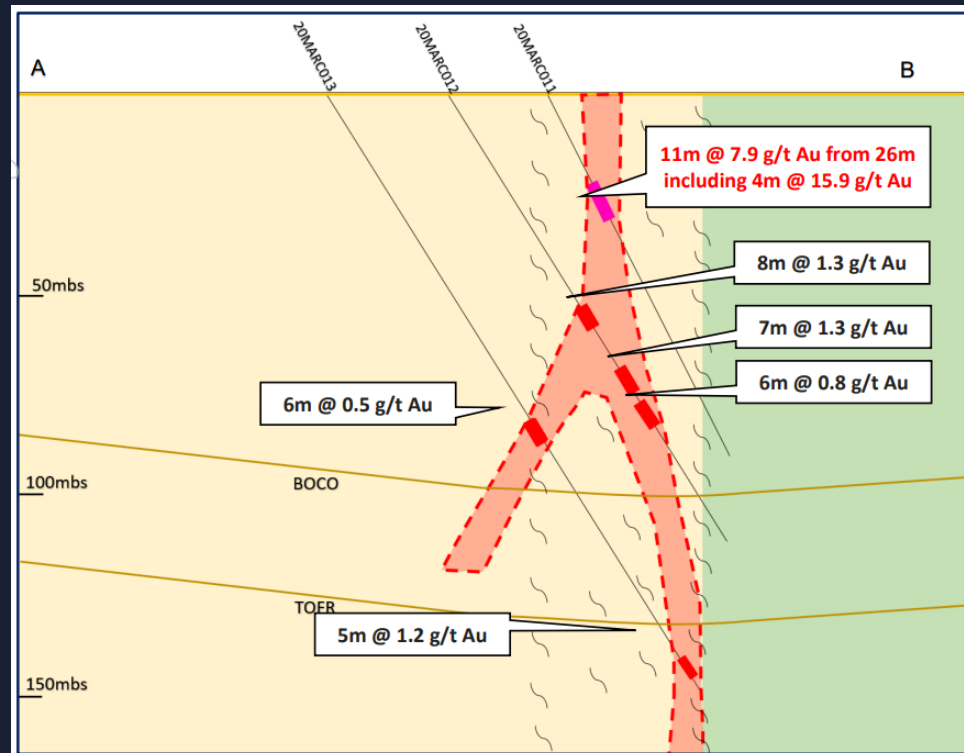
¹Source: www.goldfields.com/australia-region.php "3.5Mt Capacity" vs June 2020 Half Yearly Report of 877kt processed at Granny Smith



MON AMI – AN OPPORTUNITY TO RAPIDLY ADD OUNCES



- Inferred Mineral Resource 1.1Mt @ 1.7 g/t Au for 59 koz Au¹
- Metallurgical recovery average 95% in oxide and transition zone²
- 2020 drilling identified shallow high grade mineralisation³
- Step out drilling required north and south where deposit remains open



¹Refer to ASX Announcement 7/11/19 for the Mon Ami Mineral Resource

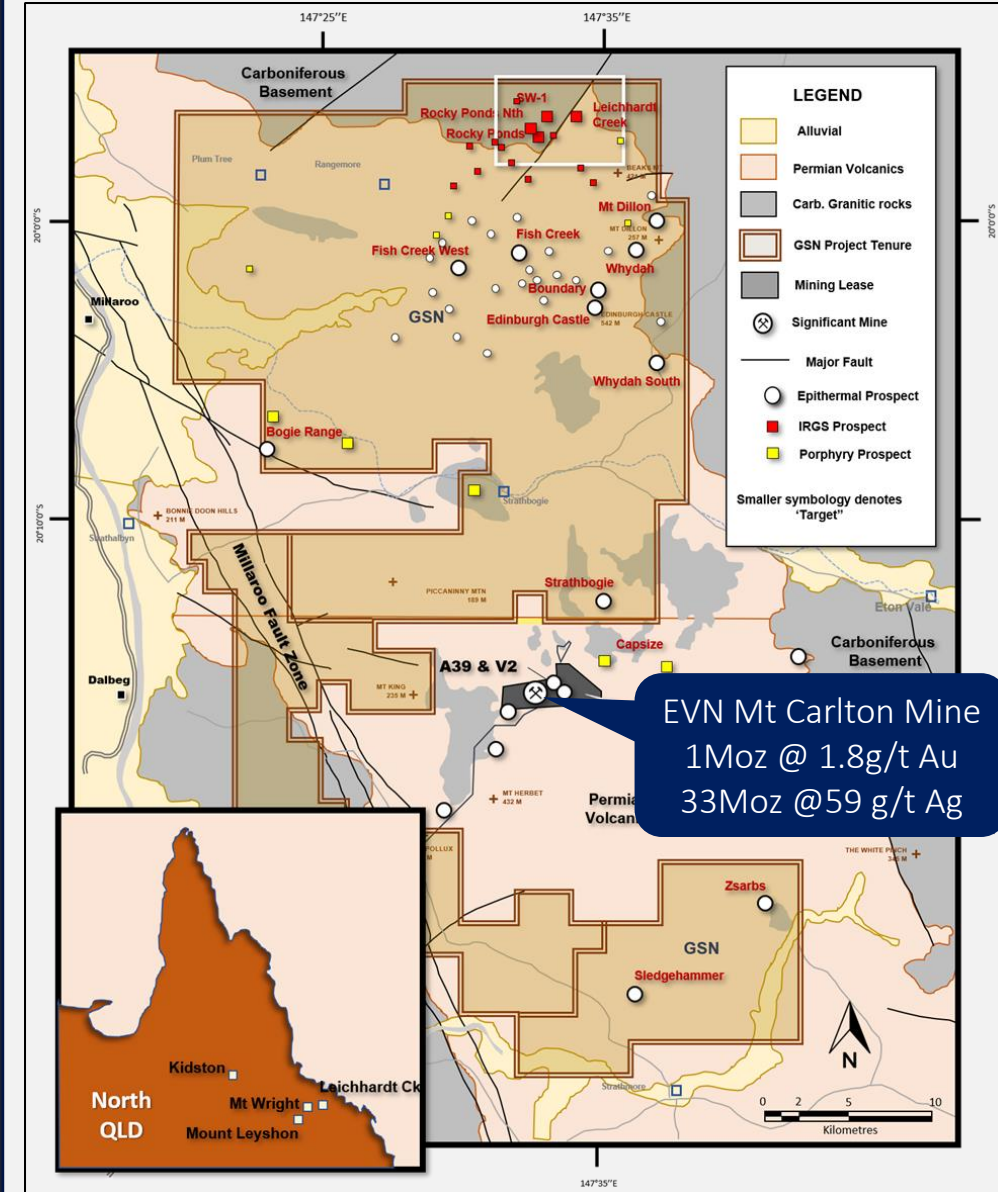
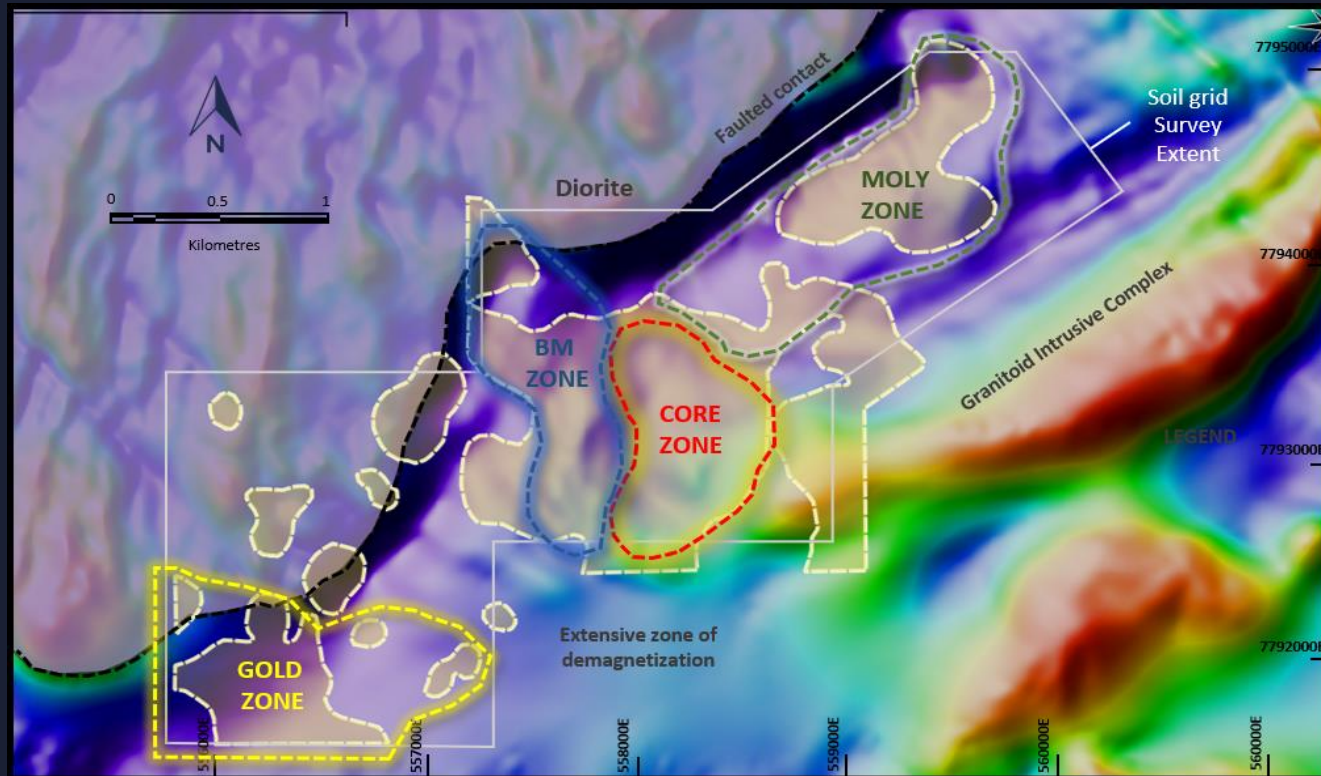
²Refer to ASX Announcement 25/1/20 for the Mon Ami Metallurgy Results

³Refer to ASX Announcement 12/8/20 for the Mon Ami Drilling Results

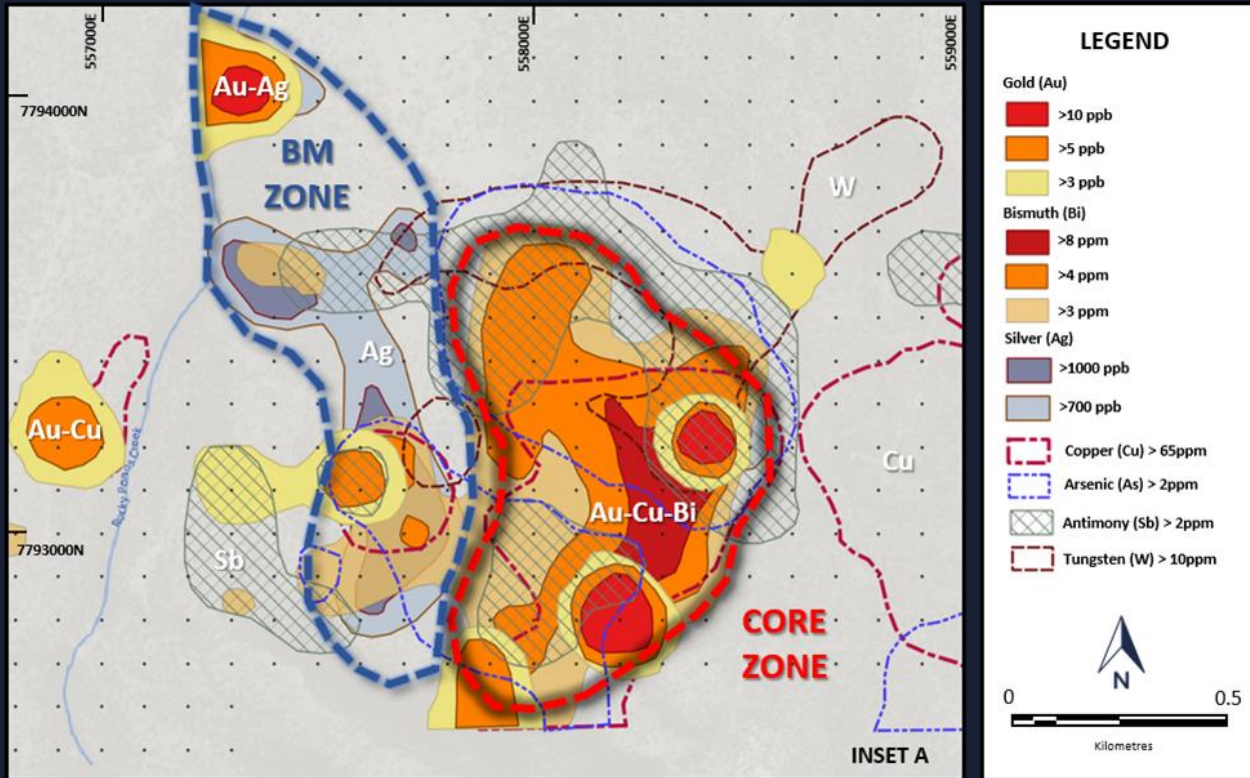
NORTH QUEENSLAND – EDINBURGH PARK

Significant system – over 20 prospective targets!

- Over 1,000km² of tenure surrounding and within 5km of the Mt Carlton Mine
- Hyperspectral Survey (co-funded by Evolution Mining) and follow up geochemical program identified 5 previously unrecognised high-priority targets for gold mineralisation
- Opportunities for tier one discoveries



NORTH QUEENSLAND – EDINBURGH PARK



- Recent soil sampling programs have identified large anomalies consistent with Intrusive Related Gold Systems (IRGS)
- Locally based Head of Exploration Queensland, Octavio Garcia, has been recently appointed to spearhead discovery focus
- Follow up soil sampling and field mapping programs underway
- Exciting drill programs planned for early 2021 as soon as the North Queensland wet season breaks

WHY GSN – INVESTMENT PROPOSITION

- 3 gold projects in tier one Australian gold districts with bonafide potential for major gold discoveries to feed hungry neighboring mills
- Quality board, supportive major shareholders, and experienced exploration teams
- Active large exploration programs underway and planned



www.gsml.com.au

Suite 4, 213 Balcatta Rd
BALCATTWA 6021
61 8 9240 4111
admin@gsml.com.au

COMPETENT PERSONS STATEMENT & IMPORTANT NOTICES

Deposit	Competent Person	Employer	Profession
Cox's Find and Mon Ami 2020 Exploration Results	Simon Buswell-Smith	Great Southern Mining Ltd	MAIG
Cox's Find and Mon Ami 2019 Exploration Results incl. metallurgy	Dr Bryce Healy	Noventum Group Pty Ltd	MAIG
Mon Ami Mineral Resource	Dr Michael Cunningham	SRK Consulting (Australasia) Pty Ltd	MAusIMM, MAIG

Competent Persons Statement

The information in this report that relates Exploration Results and Mineral Resources is based on the information of the Competent Persons listed in the table above. Each of the Competent Persons have sufficient experience relevant to the style of mineralisation and type of deposit under consideration and to the activity they are undertaking to qualify as Competent Persons under the JORC Code (2012). For new information each consent to the inclusion in the report of the matters based on his information in the form and context in which they occur. Previously announced information is cross referenced to the original announcements. In these cases, the Company is not aware of any new information or data that materially affects the information presented and that the technical parameters underpinning the estimates continue to apply and have not materially changed. The Company confirms that the form and context in which the Competent Persons findings are presented have not been materially modified from the original market announcements.

Disclaimer: No representation or warranty, express or implied, is made by the Company that the material contained in this presentation will be achieved or proved correct. Except for statutory liability which cannot be excluded, each of the Company, its directors, officers, employees, advisors or agents expressly disclaims any responsibility for the accuracy or completeness of the statements made in the presentation and excludes all liability whatsoever (including in negligence) for any loss or damage which may be suffered by any person as a consequence of any information in this presentation or any effort or omission therefrom. Any opinions expressed in the presentation are subject to change without notice.

Forward Looking Statements: Forward- looking statements are only predictions and are not guaranteed. They are subject to known and unknown risks, uncertainties and assumptions, some of which are outside the control of the Company. Past performance is not necessarily a guide to future performance and no representation or warranty is made as to the likelihood of achievement or reasonableness of any forward looking statements or other forecast. The occurrence of events in the future are subject to risks, uncertainties and other factors that may cause the Company's actual results, performance or achievements to differ from those referred to in this announcement. Given these uncertainties, recipients are cautioned not to place reliance on forward looking statements. Any forward- looking statements in this announcement speak only at the date of issue of this announcement. Subject to any continuing obligations under applicable law and the ASX Listing Rules, the Company, its directors, officers, employees and agents do not give any assurance or guarantee that the occurrence of the events referred to in this announcement will occur as contemplate.

Statements regarding the Company's plans with respect to Mineral Resources, exploration programs and future developments are forward-looking statements. There can be no assurance that the Company's plans will proceed at stated times in the future. Additionally, future drilling programs and outcomes presented are based on current estimates using information available at the time of the document's preparation. There is no guarantee that the programs will confirm the presence of additional mineral resources. Any opinions expressed in the presentation are subject to change without notice.

