

21 March 2023

Magmatic copper sulphide mineralisation confirmed in assays at Fox

(West Tanami Project, Western Australia - 100% owned)

- Diamond drill hole assays confirm copper sulphide mineralisation within magmatic rocks at Fox prospect, with peak values of 2,730ppm Cu.
- The first confirmed record of copper mineralisation within mafics of the Tanami region.
- Proterozoic rocks identified at Fox, which are host to multiple nickel-copper sulphide deposits in Western Australia.
- The region remains underexplored for magmatic sulphide potential, as it has never been a focus for previous explorers.

Killi Resources Limited ('Killi' or the 'Company') (ASX: KLI) is pleased to announce the drill results from the diamond drill hole completed at the West Tanami Project, Kimberley region of Western Australia. Magmatic copper mineralisation in the form of the mineral chalcopyrite was observed in drill core (ASX release 25 October 2022) (Figure 1) during the program, with assays now confirmed with the zone of massive sulphides returning **4.2m @ 728ppm Cu, 58ppm Co and 0.46g/t Ag including 0.6m @ 2,730ppm Cu, 114.5ppm Co, & 1.23g/t Ag.**

Killi CEO, Kathryn Cutler commented, *'The discovery of a copper mineralised magmatic system in the Tanami is the first of its kind within the region. This result highlights the potential for magmatic sulphide systems at the Project, which could host Ni-Cu-Co deposits. Magmatic units within the Tanami region are particularly underexplored, with no recorded cases of copper mineralisation currently on file, until now. These rocks were formed in the Proterozoic period, with multiple Ni-Cu-Co sulphide deposits in Western Australia of a similar age, such as Nova-Bollinger and Nebo-Babel. Mineral exploration at these truly*

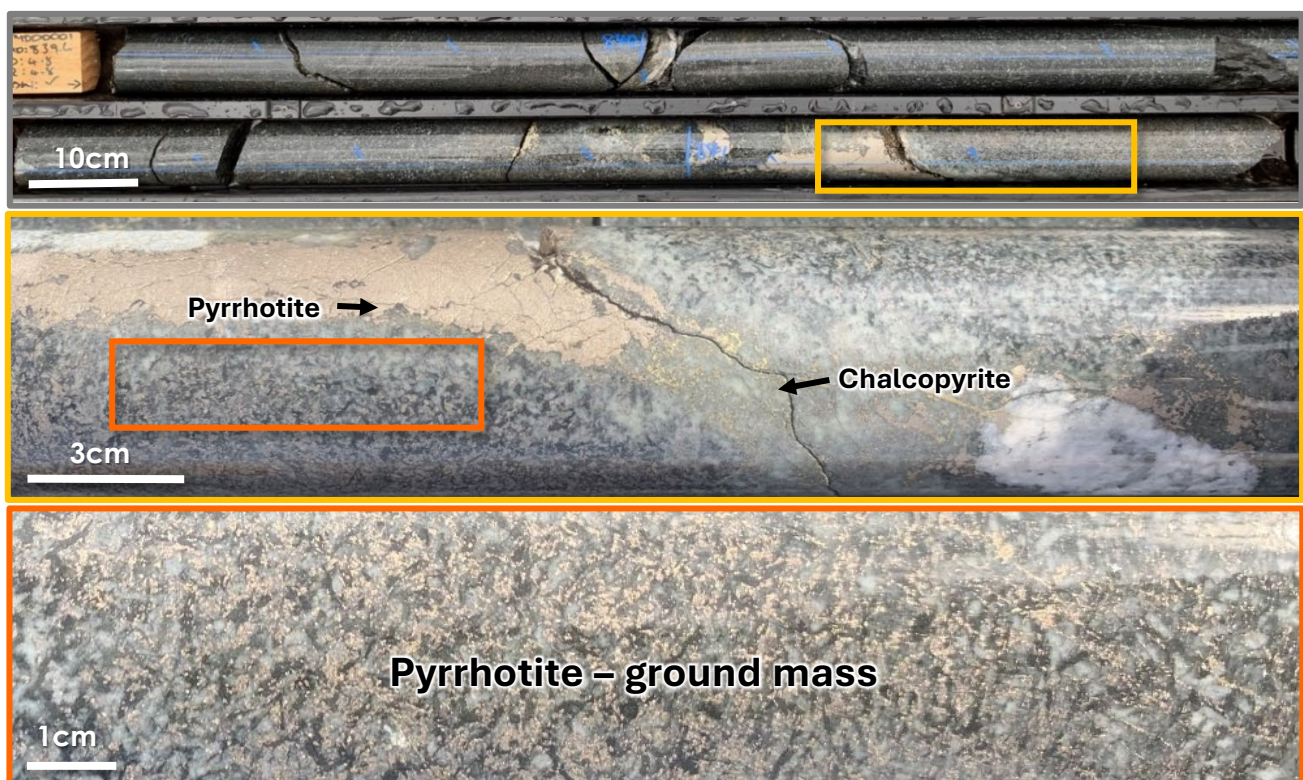


Figure 1. Texture of the semi-massive sulphides, dominantly pyrrhotite and chalcopyrite within magmatic unit, cumulate texture.

remote greenfield projects leverages the Company to unique opportunities, like this, which includes the discovery of a new commodity in a known province’.

Fox – Magmatic Sulphide potential

Geological logging identified a mafic unit from 818m to 888m (~70m width) with grain size decreasing with depth. Within the mafic unit a 10m zone (834.1m – 844.6m) of significantly increased sulphides (pyrrhotite & chalcopyrite) grading from disseminated-semi-massive sulphides down hole (see ASX release, 25 October 2022).

Laboratory assays have been received and confirm within the 10m zone copper, cobalt and silver anomalism. The assays returned **4.2m @ 728ppm Cu, 58ppm Co and 0.46g/t Ag from 839m, including 0.6m @ 2,730ppm Cu, 114.5ppm Co, & 1.23g/t Ag from 840.8m**, with cobalt and silver often associated with magmatic systems.

Multiple mafic units were logged downhole from 25-74m (49m), 306-364m (28m), 746-770m (24m) and 818-888m (70m), suggesting there is a significant opportunity to explore the magmatic potential.

Little is known about the mafics of the Tanami region, with this intercept being the first confirmed result of magmatic copper mineralisation in the district. The diamond hole was completed with the Geological Survey of Western Australia (GSWA) as part of the Exploration Incentive Scheme (EIS), where the Company received a 50% refund on drilling costs associated with TMDD0001. The drill hole was completed to a total depth of 890.4m, on a shallow angle to transect and define the stratigraphy of the prospect.

Lithology, structural and geochemical data has determined the prospect to be within the Dead Bullock Formation of the Tanami stratigraphy. This formation, highly prospective for orogenic gold, and now with this result, highlights an opportunity for magmatic sulphide mineralisation.

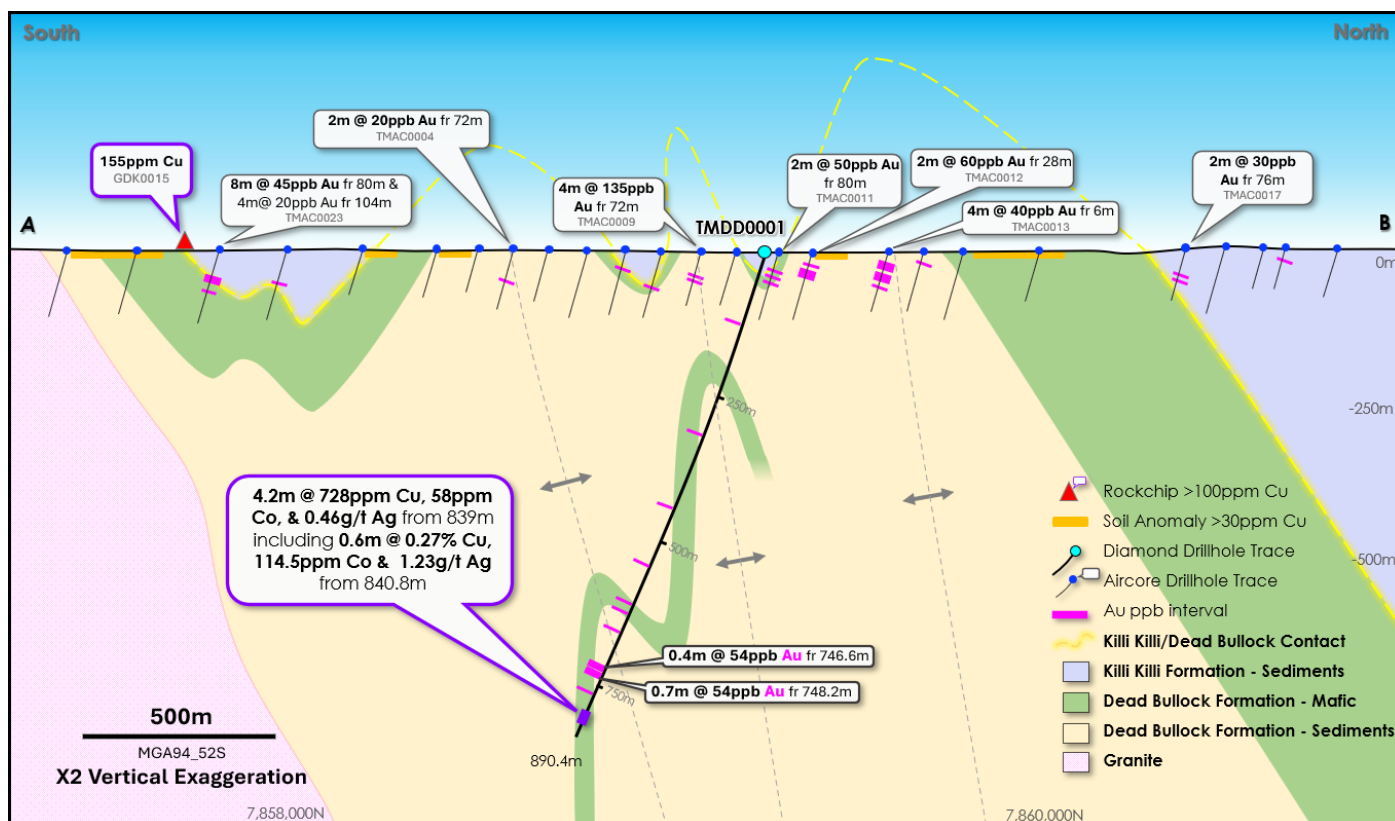


Figure 2. Cross-section of the Fox prospect with assay results from diamond drillhole, copper, cobalt, silver and gold results.

Soils completed at Fox, confirm copper anomalism at surface (>25ppm Cu) (3x background Cu values) interpreted to be associated with the mafic units intersected from the aircore program, Figure 2&3 & Table 2. Review of historical rock chips at Fox have identified five samples which have returned greater than 100ppm Cu. These rock chips align with the soil anomalies generated by Killi and highlight additional targets to follow-up, Table 3 and 4.

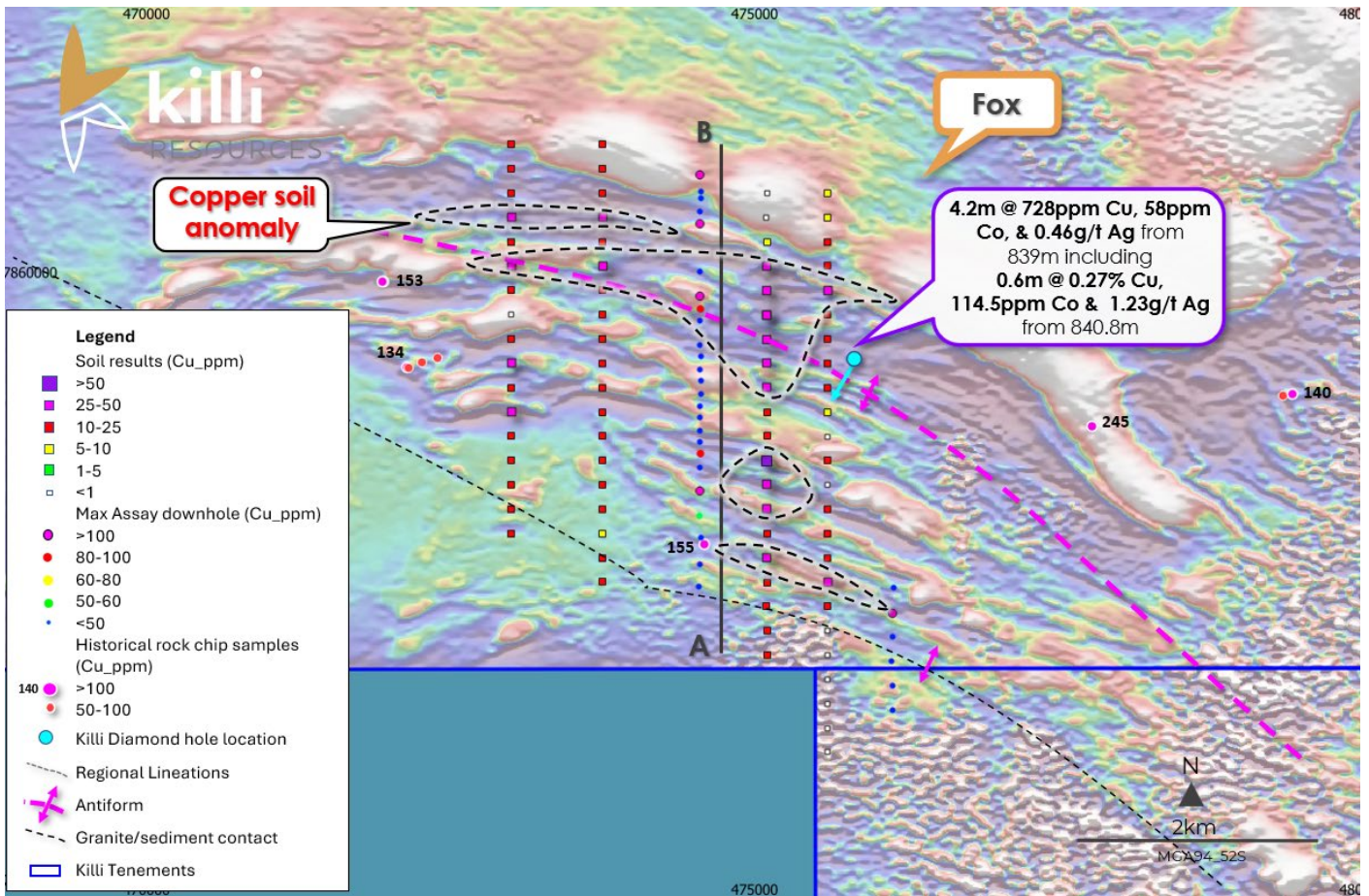


Figure 3. Plan view of Fox prospect with location of diamond drillhole with copper, cobalt, silver results, with soil results (Cu_ppm) and max assay downhole for copper from the aircore drillholes completed in 2022, overlaying recently flown close-spaced magnetics (TM1VD_Nshade_NL).

Magmatic Sulphide System Review – Western Australia

Nickel and nickel-copper deposits can be one of two styles of mineralisation, either magmatic or lateritic.

Magmatic sulphide systems form from magmas or molten rock that comes from the earth's mantle and intrude into the earth's crust. These magmas are a source for fluids, metal and energy and follow pathways of least resistance to the crust, forming volcanic deposits near surface.

Australia is host to 26.8% of the worlds nickel resources and the dominant form of mineralisation is magmatic hosted sulphide deposits. Magmatic sulphide deposits in Western Australia commonly host nickel or nickel-copper and are found within the Archaean greenstone sequences and laterites of the Eastern Goldfields.

Recent magmatic sulphide discoveries within the state are located within Proterozoic terrains with deposits in the Albany-Fraser Orogen (Nova-Bollinger, Ni-Cu-Co, Independence Group), Musgrave Province (Nebo-Babel, Ni-Cu, OZ Minerals) and the Kimberley Craton (Savannah, Ni-Cu-Co, Panoramic Resources), Figure 4.

Rocks from the West Tanami Project were formed during the same period (Proterozoic) and are prospective for the same minerals.

Future exploration

Based on the current understanding and research completed the Company believes a geophysical electromagnetic and/or gravity survey will be the most useful exploration method to generate potential sulphide targets, to be drill tested in the coming field season. The samples which returned anomalous Cu-Co-Ag will also be analysed for platinum and palladium to further add to the picture of the mafics.

The Company is also planning exploration programs to test the gold and rare earth targets generated from the soil and aircore programs at the project in 2022.

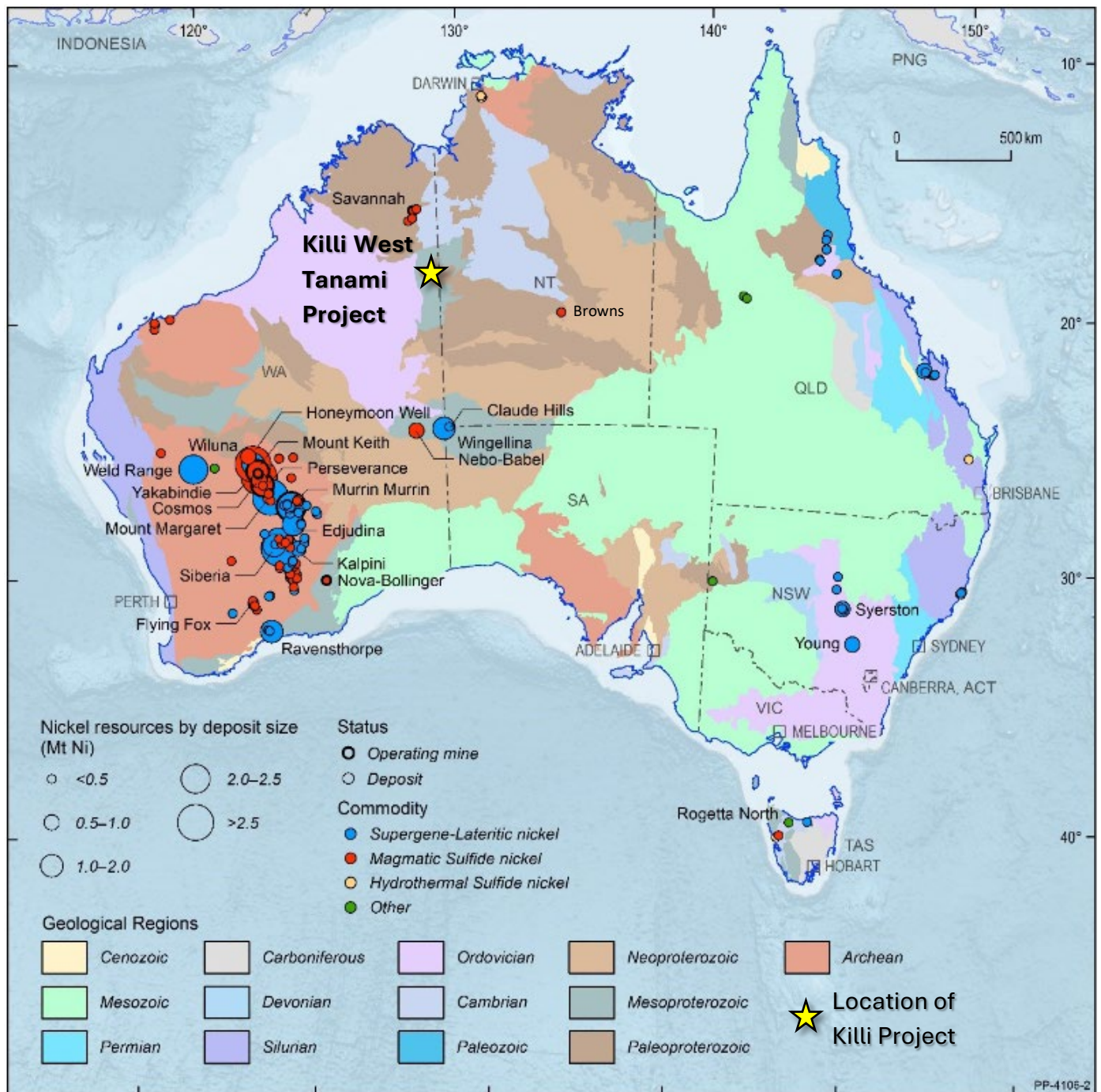


Figure 4. Australian nickel deposits and operating mines. Deposits characterised by deposit size, and deposit style, over the geological regions (Geoscience Australia).

Table 1. Assay results of diamond drillhole TMDD0001 at Fox Prospect.

Hole ID	Easting	Northing	RL	Dip	Azi	Depth	From (m)	Width (m)	Cu (ppm)	Co (ppm)	Ag (ppb)	Au (ppb)
TMDD0001	475803.18	7859279.52	421	-55	200	890.4	115.5	0.8	-	-	-	10
							304.5	2.0	-	-	-	11.5
							431.8	3.2	-	-	-	9.4
							538.3	1.7	-	-	-	10.4
							628.3	1.7	-	-	-	13.1
							746.6	0.4	-	-	-	54
							748.2	0.7	-	-	-	54
							790.9	0.5	-	-	-	20
							611.2	0.4	-	-	120	11
						Incl. 840.8	0.6	2,730	114.5	1,230	1	

(-) not assayed for element.

Table 2. Details of soil samples reported at Fox prosect (GDA94_52S)

Sample ID	Easting	Northing	Cu (ppm)	Ni (ppm)	Au (ppm)	Co (ppm)	Sample ID	Easting	Northing	Cu (ppm)	Ni (ppm)	Au (ppm)	Co (ppm)
WTS0193	473000	7857851	13	9	bdl	2	WTS0233	475100	7857649	43	27	bdl	25
WTS0194	473000	7858052	15	12	bdl	6	WTS0234	475100	7857849	19	15	bdl	14
WTS0195	473001	7858250	19	14	bdl	11	WTS0235	475100	7858050	29	35	bdl	15
WTS0196	473001	7858451	18	12	bdl	8	WTS0236	475100	7858251	31	25	bdl	13
WTS0197	472999	7858650	17	13	bdl	7	WTS0237	475102	7858450	67	21	bdl	14
WTS0198	473000	7858849	26	14	bdl	7	WTS0238	475101	7858651	13	9	bdl	4
WTS0199	473000	7859050	21	14	bdl	10	WTS0239	475101	7858850	12	6	bdl	4
WTS0200	473000	7859250	32	17	bdl	10	WTS0240	475102	7859050	27	18	bdl	14
WTS0201	473001	7859451	21	18	bdl	14	WTS0241	475100	7859250	29	25	bdl	25
WTS0202	473001	7859649	bdl	bdl	bdl	2	WTS0242	475101	7859449	32	25	bdl	24
WTS0203	473000	7859851	22	16	bdl	13	WTS0243	475100	7859650	28	33	bdl	17
WTS0204	473000	7860050	27	21	bdl	16	WTS0244	475101	7859851	26	25	bdl	16
WTS0205	472999	7860251	21	16	bdl	14	WTS0245	475102	7860049	30	19	bdl	18
WTS0206	472999	7860450	43	22	bdl	21	WTS0246	475100	7860251	6	7	bdl	4
WTS0207	473001	7860651	25	11	bdl	5	WTS0247	475098	7860449	bdl	6	bdl	4
WTS0208	472999	7860850	23	10	bdl	4	WTS0248	475100	7860650	bdl	6	bdl	4
WTS0209	473000	7861050	13	11	bdl	4	WTS0249	475601	7856051	bdl	7	bdl	5
WTS0210	473749	7857450	12	12	bdl	8	WTS0250	475600	7856250	bdl	6	bdl	4
WTS0211	473749	7857650	12	11	bdl	6	WTS0251	475600	7856450	bdl	bdl	bdl	4
WTS0212	473750	7857851	10	9	bdl	6	WTS0252	475600	7856651	bdl	bdl	bdl	5
WTS0213	473749	7858050	12	9	bdl	8	WTS0253	475600	7856850	bdl	bdl	bdl	4
WTS0214	473750	7858250	13	37	bdl	7	WTS0254	475599	7857051	bdl	6	bdl	5
WTS0215	473751	7858450	16	9	bdl	7	WTS0255	475599	7857251	18	20	bdl	13
WTS0216	473752	7858650	20	14	bdl	10	WTS0256	475601	7857449	40	22	bdl	16
WTS0217	473750	7858850	17	12	bdl	7	WTS0257	475600	7857649	13	20	bdl	19
WTS0218	473751	7859050	18	20	bdl	12	WTS0258	475602	7857851	15	39	bdl	14
WTS0219	473751	7859249	16	15	bdl	11	WTS0259	475600	7858051	12	13	bdl	13
WTS0220	473752	7859451	25	23	bdl	15	WTS0260	475599	7858250	bdl	6	bdl	5
WTS0221	473751	7859650	14	10	bdl	5	WTS0261	475600	7858451	20	24	bdl	20
WTS0222	473751	7859851	13	8	bdl	3	WTS0262	475600	7858650	bdl	7	bdl	3
WTS0223	473753	7860051	34	27	bdl	19	WTS0263	475601	7858850	10	11	bdl	11
WTS0224	473751	7860250	18	16	bdl	9	WTS0264	475602	7859050	15	13	bdl	14
WTS0225	473752	7860450	34	20	bdl	16	WTS0265	475599	7859251	18	18	bdl	20
WTS0226	473752	7860650	21	7	bdl	4	WTS0266	475601	7859449	24	39	bdl	25
WTS0227	473751	7860852	24	12	bdl	7	WTS0267	475601	7859649	25	75	bdl	24
WTS0228	473749	7861050	22	8	bdl	6	WTS0268	475599	7859850	39	25	bdl	39
WTS0229	475101	7856850	20	9	bdl	5	WTS0269	475600	7860051	11	12	bdl	5
WTS0230	475101	7857049	20	8	bdl	5	WTS0270	475601	7860252	11	12	bdl	5
WTS0231	475099	7857250	22	8	bdl	5	WTS0271	475600	7860449	10	14	bdl	6
	475101	7857448	22	12	bdl	11	WTS0272	475601	7860651	7	11	bdl	5

(ppm) part per million. (bdl) below detection level for analysis

Table 3. Killi rock chip result at Fox (MGA94_52s)

Sample ID	Easting	Northing	RL	Cu_ppm	Company	Year
WTR0185	479418	7858994	437	149	Killi	2022

Table 4. Historical Rock Chip Samples (MGA94_52s)

Sample ID	Easting	Northing	RL	Cu_ppm	Company	Year
GDK0011	471950	7859920	404	153	Tanami Gold	2005
TA37581	477773	7858728	422	245	Tanami Gold	2001
GDK0015	474584	7857760	415	155	Tanami Gold	2005
TH014	472145	7859215	407	134.5	Tanami Gold	2000
GDK0012	471936	7859925	404	141	Tanami Gold	2005

Refer to the Company's Prospectus dated 16 November 2022 (lodged with ASX on 8 February 2022) for all information pertaining to historical rock chip samples at the West Tanami Project.

Upcoming Exploration results

Results remain pending for the ~2,500m of AC drilling and rock chip samples taken across the project.

Authorised for release by the Board of Killi Resources Limited.

Media Enquires

Kathryn Cutler
Chief Executive Officer
+61 8 9322 7600
kathryn@killi.com.au

Compliance Statement

The information in this report that relates to Exploration Results for the West Tanami Project is extracted from the ASX Announcements listed below which are available on the Company website www.killi.com.au and the ASX website (ASX code: KLI):

Date	Announcement title
1 December 2022	Gold Mineralisation within Dead Bullock Formation at Tanami
25 October 2022	Further Information – Magmatic Sulphide Zone at West Tanami
8 February 2022	Prospectus

The Company confirms that it is not aware of any new information or data that materially affects the information included in the original market announcements and that all material assumptions and technical parameters underpinning the estimates in the market announcements continue to apply and have not materially changed. The Company confirm that form and context in which the Competent Person's findings are presented have not been materially modified from the original market announcements.

Competent Person's Statement

The information in this report that relates to Exploration Results is based on information compiled by Ms Kathryn Cutler. Ms Cutler is a Member of The Australasian Institute of Mining and Metallurgy. Ms Cutler has sufficient experience that is relevant to the style of mineralisation and type of deposit under consideration and to the activity which they are undertaking to qualify as a Competent Person as defined in the 2012 Edition of the Australasian Code for Reporting of Exploration Results, Mineral Resources and Ore Reserves. Ms Cutler consents to the inclusion in this report of the matters based on this information in the form and context in which it appears.

Killi Resources Limited

Killi Resources (ASX: KLI) is a gold, copper and rare earth explorer with four wholly owned assets in Australia, based in Queensland and Western Australia, Figure 5. The Company is focussed on greenfields projects in underexplored provinces with the potential for new large-scale discoveries. Since the Company floated on the ASX in February 2022, exploration has focused on the West Tanami Project in the Kimberley of WA and the Ravenswood North Project in QLD.

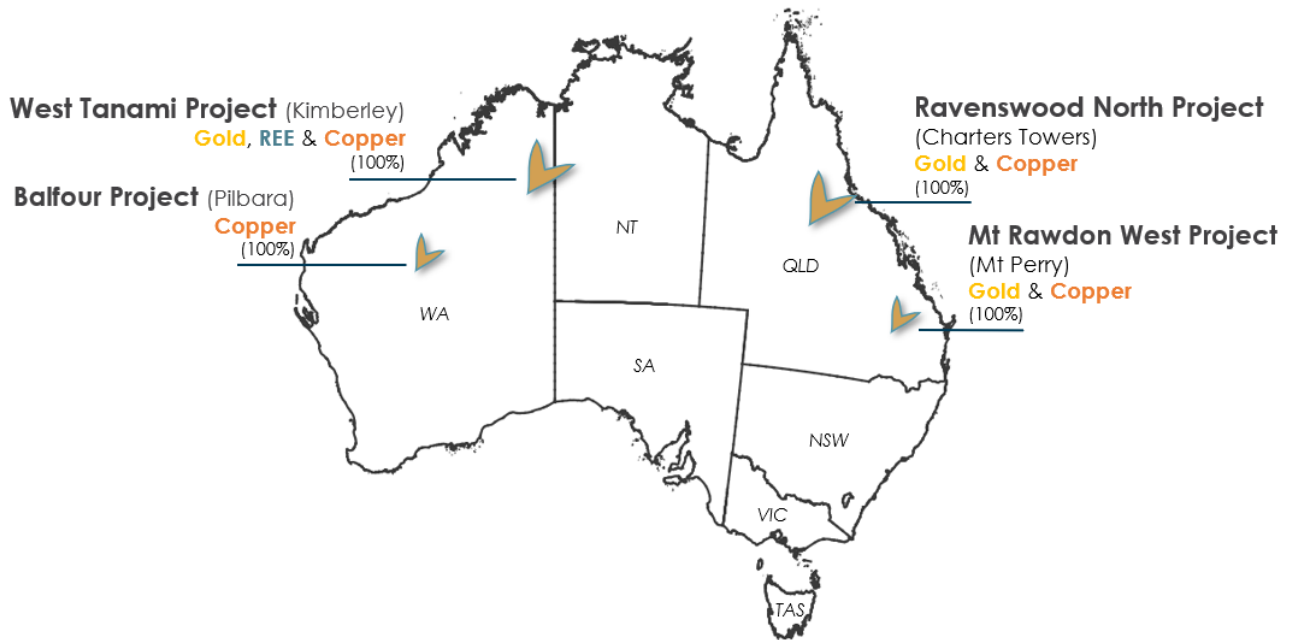


Figure 5. Location of Killi Resources Limited gold, copper and rare earth projects in Australia.

This announcement relates to the West Tanami Project in Western Australia

Gold Opportunity

The Company owns 100% of the West Tanami Project in the north-east of Western Australia. The land holding totals 1,634km² of granted tenure over the Tanami geological belt with existing gold endowment of the province greater than 19Moz. The majority of the endowment is located in the Northern Territory at the Dead Bullock Soak Goldfield, Callie Gold Mine owned and operated by Newmont Corporation, has a current Proven & Probable Reserves of 33Mt @ 5.34g/t Au for 5.66M oz Au (2022 Mineral Reserves, Newmont, 23 February 2023).

The project covers 100km strike of the major gold corridor, 120kms along strike from the Callie Gold mine. The district is host to multiple gold deposits which includes Callie with ~14Moz Au total endowment, the Tanami Goldfields (3M oz Au), Twin Bonanza & Buccaneer (1.0M oz Au Resource) and the Coyote and Kookaburra mines (1M oz total gold endowment), Figure 6.

REE Opportunity

Aside from the significant gold opportunity of the project, recent work completed by explorers in the area have highlighted the potential for hydrothermal Rare Earth Element systems (REE's) within the district. Surface TREO values have been reported of 12.45% (TREO) at the Killi Killi East prospect (PVW Resources) 14kms along strike and 12% (TREO) at the Boulder Ridge prospect (Northern Minerals) 50kms along strike from the Killi Resources boundary, Figure 6.

The Browns Range REE mine is located 50kms from the project and has recently increased the resource to 9.26M tonnes at 0.67% Total Rare Earth Oxides (TREO's). The rare earth mine is one of the three operating REE mines in Australia.

The potential for rare earth elements on the land holding exposing the Company to critical minerals and metals needed for the 'green energy' industry.

Section 1 Sampling Techniques and Data

Criteria	JORC Code explanation	Commentary
Sampling techniques	<ul style="list-style-type: none"> Nature and quality of sampling (eg cut channels, random chips, or specific specialised industry standard measurement tools appropriate to the minerals under investigation, such as down hole gamma sondes, or handheld XRF instruments, etc). These examples should not be taken as limiting the broad meaning of sampling. Include reference to measures taken to ensure sample representivity and the appropriate calibration of any measurement tools or systems used. Aspects of the determination of mineralisation that are Material to the Public Report. In cases where 'industry standard' work has been done this would be relatively simple (eg 'reverse circulation drilling was used to obtain 1 m samples from which 3 kg was pulverised to produce a 30 g charge for fire assay'). In other cases more explanation may be required, such as where there is coarse gold that has inherent sampling problems. Unusual commodities or mineralisation types (eg submarine nodules) may warrant disclosure of detailed information. 	<p>At Fox prospect soil samples were taken on a 200m x 750m and 200m x 500m grid spacing around and extending the aircore lines. Soil samples were taken using a shovel and a sieve approximately 15 – 25 cm below the surface, within the B or C soil horizon. Soil was sieved using a 180 µm mesh and 150 - 200 g of sample was collected in a numbered paper sample bag.</p> <p>Soil sample locations were recorded using a handheld GPS, which has an estimated accuracy or +/- 6m.</p> <p>Rock chip samples were collected at the Fox prospect where outcrop was identified. Samples were collected using a geological pick, placed within a calico bag, labelled with the sample ID, collected in a polyweave bag followed by a bulka bag for dispatch to SGS Perth laboratory. Samples weighed between 1-3kg and were recorded in the Company's Database.</p> <p>A diamond (DD) drill program, drillhole TMDD0001, samples selected and measured prior to being cut into half core, as either NQ or HQ samples, and placed in a numbered calico bag. Sample size is an average of 0.7m with lengths ranging between 0.3 - 1.2m. The calico bags were then collected in polyweave bags and placed within a bulka bag and hand delivered to the ALS laboratory in Malaga. Laboratory internal transport system delivered samples for preparation and analysis to ALS Wangara, Perth.</p> <p>Each sample was analysed for gold via 50g fire assay Au-ICP22 down the hole. Selected samples downhole were then chosen for multi element analysis by ME-MS61(48 element suite) for Ag, Al, As, Ba, Be, Bi, Ca, Cd, Ce, Co, Cr, Cs, Cu, Fe, Ga, Ge, Hf, In, K, La, Li, Mg, Mn, Mo, Na, Nb, Ni, P, Pb, Rb, Re, S, Sb, Sc, Se, Sn, Sr, Ta, Te, Th, Ti, Tl, U, V, W, Y, Zn and Zr. With further REE analysis add on using ME-MS61r (REE 60 elements) to include elements Dy, Er, Eu, Gd, Ho, Lu, Nd, Pr, Sm, Tb, Tm and Yb in addition to the ME-MS61 suite.</p>
Drilling techniques	<ul style="list-style-type: none"> Drill type (eg core, reverse circulation, open-hole hammer, rotary air blast, auger, Bangka, sonic, etc) and details (eg core diameter, triple or standard tube, depth of diamond tails, face-sampling bit or other type, whether core is orientated and if so, by what method, etc). 	<p>The DD program was completed using a truck mounted Sandvik 1200 AWD truck mounted drill rig. The hole was orientated on an azimuth of -55 towards 200 (south-southwest). The diameter of core comprises of HQ coring from surface to 171.9m then NQ from 171.9 -890.4m (end of hole). Core samples were orientated downhole using a Reflex ACT III Rapid Decent (RD) Orientation Tool.</p>
Drill sample recovery	<ul style="list-style-type: none"> Method of recording and assessing core and chip sample recoveries and results assessed. Measures taken to maximise sample recovery and ensure representative nature of the samples. Whether a relationship exists between sample recovery and grade and whether sample bias may have occurred due to preferential loss/gain of fine/coarse material. 	<p>Downhole recovery of core was recorded for every metre drilled. Each metre was reviewed and documented by tray number, recovery length of solid core and an estimated recovery percentage.</p> <p>Sample recovery conditions were recorded during drilling which allowed onsite Geologist to rectify any issue presented with the contractor at the time of drilling.</p> <p>No samples biased has been observed.</p>
Logging	<ul style="list-style-type: none"> Whether core and chip samples have been geologically and geotechnically logged to a level of detail to support appropriate Mineral Resource estimation, mining studies and metallurgical studies. Whether logging is qualitative or quantitative in nature. Core (or costean, channel, etc) photography. The total length and percentage of the relevant intersections logged. 	<p>Soil samples were logged for soil horizon, moisture content, colour intensity, colour, and comments in relation to topographic features.</p> <p>Rockchip samples were logged for lithology, colour and alteration.</p> <p>Diamond core samples were logged in both qualitative and quantitative nature for regolith, colour, lithology, structures, percentage of alteration, texture, and percentage veining.</p> <p>Two photographs were taken of every core tray as a dry and wet version.</p> <p>The total hole has been logged from surface to 890.4m.</p>
Sub-sampling techniques and	<ul style="list-style-type: none"> If core, whether cut or sawn and whether quarter, half or all core taken. If non-core, whether riffled, tube sampled, rotary split, etc and 	<p>Soil samples were dry sieved using a 180 µm mesh, and a sample of weight 150 - 200g was collected in a paper soil sample bag. Where the soil was too wet, a 2-3 kg sample was collected in a calico bag, to be dried and sieved at the laboratory.</p>

Criteria	JORC Code explanation	Commentary
sample preparation	<p><i>whether sampled wet or dry.</i></p> <ul style="list-style-type: none"> For all sample types, the nature, quality and appropriateness of the sample preparation technique. Quality control procedures adopted for all sub-sampling stages to maximise representivity of samples. Measures taken to ensure that the sampling is representative of the in-situ material collected, including for instance results for field duplicate/second-half sampling. Whether sample sizes are appropriate to the grain size of the material being sampled. 	<p>Standards (GRE-06) and duplicates were inserted approximately every 150 samples through a batch and one blank (OREAS46) at the beginning of each batch.</p> <p>Core samples were cut into half core, as either NQ or HQ samples.</p> <p>Certified Reference material, standards and blanks were inserted into the sampling sequence. Where at least 1 standard and 1 blank were completed every 200 samples. Internal Company QAQC procedures have been followed to ensure data is accurate.</p> <p>Samples no more than 1.2m in length were sampled to ensure an appropriate sample size.</p>
Quality of assay data and laboratory tests	<ul style="list-style-type: none"> The nature, quality and appropriateness of the assaying and laboratory procedures used and whether the technique is considered partial or total. For geophysical tools, spectrometers, handheld XRF instruments, etc, the parameters used in determining the analysis including instrument make and model, reading times, calibrations factors applied and their derivation, etc. Nature of quality control procedures adopted (eg standards, blanks, duplicates, external laboratory checks) and whether acceptable levels of accuracy (ie lack of bias) and precision have been established. 	<p>Soil samples were hand delivered for analysis to SGS Perth, Western Australia for analysis.</p> <p>Soil samples were analysed for multi element via GE_ICP40Q20 method. Samples were analysed for: Ag, Al, As, Ba, Be, Bi, Ca, Cd, Ce, Co, Cr, Cs, Cu, Dy, Er, Eu, Fe, Ga, Gd, Hf, Ho, K, La, Li, Lu, Mg, Mn, Mo, Na, Nb, Nd, Ni, P, Pb, Pr, Rb, S, Sb, Sc, Se, Sm, Sn, Sr, Ta, Tb, Te, Th, Ti, Tl, Tm, U, V, W, Y, Yb, Zn, and Zr.</p> <p>A total of 2 blanks and 2 standards were included within the soil sample batch that was submitted to the laboratory, as part of the company's QAQC procedures.</p> <p>As part of the labs internal QAQC procedures, the laboratory completed 14 blanks, 46 duplicates and 31 standards within the soil sample batch.</p> <p>Rock chip samples were analysed for gold and multi element via FAP303 (30g charge fire assay) and IMS40Q for Ag, As, Au, B, Ba, Be, Bi, Cd, Ce, Co, Cr, Cs, Cu, Ga, Ge, Hf, Hg, In, La, Li, Mo, Nb, Ni, Pb, Rb, Re, S, Sb, Sc, Se, Sr, Ta, Te, Th, Tl, U, V, W, Y, Zn and Zr.</p> <p>DD samples were analysed for gold via Au-ICP22 (50g charge) and multi element via ME-MS61 and ME-MS61r for Ag, Al, As, Ba, Be, Bi, Ca, Cd, Ce, Co, Cr, Cs, Cu, Fe, Ga, Ge, Hf, In, K, La, Li, Mg, Mn, Mo, Na, Nb, Ni, P, Pb, Rb, Re, S, Sb, Sc, Se, Sn, Sr, Ta, Te, Th, Ti, Tl, U, V, W, Y, Zn, Zr and Dy, Er, Eu, Gd, Ho, Lu, Nd, Pr, Sm, Tb, Tm, Yb.</p>
Verification of sampling and assaying	<ul style="list-style-type: none"> The verification of significant intersections by either independent or alternative company personnel. The use of twinned holes. Documentation of primary data, data entry procedures, data verification, data storage (physical and electronic) protocols. Discuss any adjustment to assay data. 	<p>Field data for the soils was collected by two contract field assistants. The data was collected and reconciled by comparison of field notes and GPS co-ordinates taken during the program.</p> <p>DD field data was collected by supervising geologists in the field. The data was further reconciled by comparison of field notes taken during the program.</p> <p>The reported hole has not been twinned.</p> <p>Primary data was collected and logged in the field electronically in the Company's database format within excel. Assays were interrogated to determine anomalism of elements from background, which have been reported in Table 1, Table 2, Table 3 & Table 4 in the main text of the document.</p> <p>All assays have been loaded into the Company's Azeva database and QAQC passes internal procedures.</p> <p>No adjustments have been applied to the assay data.</p>
Location of data points	<ul style="list-style-type: none"> Accuracy and quality of surveys used to locate drill holes (collar and down-hole surveys), trenches, mine workings and other locations used in Mineral Resource estimation. Specification of the grid system used. Quality and adequacy of topographic control. 	<p>The location of the soil and rockchip samples was recorded using a hand-held GPS, with waypoints recorded at each location, within the MGA94_52S grid-system, and validated within the Company's database.</p> <p>The location of the DD hole was recorded using a hand-held GPS, with an accuracy of ± 4m, within the MGA94_52S grid-system, and validated within the Company's database.</p> <p>The diamond drill hole and soil locations were recorded on flat lying topography eliminating any topographic interference.</p>

Criteria	JORC Code explanation	Commentary
Data spacing and distribution	<ul style="list-style-type: none"> • <i>Data spacing for reporting of Exploration Results.</i> • <i>Whether the data spacing and distribution is sufficient to establish the degree of geological and grade continuity appropriate for the Mineral Resource and Ore Reserve estimation procedure(s) and classifications applied.</i> • <i>Whether sample compositing has been applied.</i> 	<p>Soil samples were collected on a 200 m (sample spacing) x 750 m (line spacing) and 200 m (sample spacing) x 500 m (line spacing) soil grids.</p> <p>Rockchip samples were collected in areas where outcrop was identified.</p> <p>Only one diamond hole was completed.</p> <p>The diamond hole is not contributing towards a Resource.</p> <p>Sample compositing has not been applied.</p>
Orientation of data in relation to geological structure	<ul style="list-style-type: none"> • <i>Whether the orientation of sampling achieves unbiased sampling of possible structures and the extent to which this is known, considering the deposit type.</i> • <i>If the relationship between the drilling orientation and the orientation of key mineralised structures is considered to have introduced a sampling bias, this should be assessed and reported if material.</i> 	<p>The diamond hole was oriented -55 towards 200 degrees, perpendicular to the interpreted stratigraphy of the region, in order to complete a cross-section across the geology.</p> <p>No bias to sampling of structures or drilling orientation is interpreted during this early exploration stage.</p>
Sample security	<ul style="list-style-type: none"> • <i>The measures taken to ensure sample security.</i> 	<p>Soil and rockchip samples were delivered to SGS Perth, Western Australia by a contracted freight company, directly from the field.</p> <p>DD samples were cut into half core samples by permanent staff of the Company, collected in bulka bags and hand delivered to ALS laboratory, Malaga, Perth. Internal lab transport organised transportation of the samples for sample preparation and analysis at ALS Wangara, Perth.</p>
Audits or reviews	<ul style="list-style-type: none"> • <i>The results of any audits or reviews of sampling techniques and data.</i> 	<p>The company has completed an internal audit on the data to confirm the Company QAQC guidelines are followed.</p>

Section 2 Reporting of Exploration Results

Criteria	JORC Code explanation	Commentary
Mineral tenement and land tenure status	<p>(a) <i>Type, reference name/number, location and ownership including agreements or material issues with third parties such as joint ventures, partnerships, overriding royalties, native title interests, historical sites, wilderness or national park and environmental settings.</i></p> <p>(b) <i>The security of the tenure held at the time of reporting along with any known impediments to obtaining a licence to operate in the area.</i></p>	<p>The tenements relating to this announcement are held within Iron Bull Bangemall Ltd, which is a wholly owned subsidiary of Killi Resources limited.</p> <p>The results in this announcement are on Killi tenure.</p> <p>Tenements E80/5101, E80/5102, E80/5100, E80/5103 are all granted.</p> <p>At this point the company is not aware of any reasons that inhibit the company to operate on the tenement in the future.</p>
Exploration done by other parties	<p>(c) <i>Acknowledgment and appraisal of exploration by other parties.</i></p>	<p>Exploration has taken place on the tenement by Tanami Gold, Acacia Resources, Geographe Resources Limited, Barrick Gold of Australia Limited, Anglogold Australia Limited, Tanami Exploration NL, Afmeco Mining and Exploration Pty Ltd, Uranio Limited, Baracus Pty Ltd, Northern Minerals Limited, Hemisphere Resources Limited.</p>
Geology	<p>(d) <i>Deposit type, geological setting and style of mineralisation.</i></p>	<p>Tenements E80/5101, E80/5102, E80/5100, E80/5103 are prospective for hydrothermal sediment hosted gold deposits. These tenements are along strike</p>

Criteria	JORC Code explanation	Commentary
Drill hole information	<p>(e) A summary of all information material to the understanding of the exploration results including a tabulation of the following information for all Material drill holes:</p> <p>(i) easting and northing of the drill hole collar</p> <p>(ii) elevation or RL (Reduced Level – elevation above sea level in metres) of the drill hole collar</p> <p>(iii) dip and azimuth of the hole</p> <p>(iv) down hole length and interception depth</p> <p>(v) hole length.</p> <p>(f) If the exclusion of this information is justified on the basis that the information is not Material and this exclusion does not detract from the understanding of the report, the Competent Person should clearly explain why this is the case.</p>	<p>and adjacent the Kookburra, Coyote, Old Pirate, and Callie gold mines. In Western Australia and the Northern Territory.</p> <p>Full details of diamond drillhole in Table 2.</p>
Data aggregation methods	<p>In reporting Exploration Results, weighting averaging techniques, maximum and/or minimum grade truncations (eg cutting of high grades) and cut-off grades are usually Material and should be stated.</p> <p>Where aggregate intercepts incorporate short lengths of high-grade results and longer lengths of low-grade results, the procedure used for such aggregation should be stated and some typical examples of such aggregations should be shown in detail.</p> <p>The assumptions used for any reporting of metal equivalent values should be clearly stated.</p>	<p>Weighted averages were calculated for diamond drill results only, by weighting to sample length downhole.</p> <p>Gold intercepts were considered significant where the gold grade was greater than 20ppb Au, with no more than 3 metres of internal dilution (<20ppb Au).</p> <p>No cut-offs were applied to the drill assays.</p>
Relationship between mineralisation widths and intercept lengths	<p>These relationships are particularly important in the reporting of Exploration Results.</p> <p>If the geometry of the mineralisation with respect to the drill hole angle is known, its nature should be reported.</p> <p>If it is not known and only the down hole lengths are reported, there should be a clear statement to this effect (eg 'down hole length, true width not known').</p>	<p>As this is the first diamond drill hole of depth into the area, and there is minor outcrop at surface to delineate a specific lithological orientation, the specific geometry of the mineralisation is not known, and remains an interpretation of the results.</p> <p>Results from the drilling have been reported as downhole length, with the true width not known.</p>
Diagrams	<p>Appropriate maps and sections (with scales) and tabulations of intercepts should be included for any significant discovery being reported These should include, but not be limited to a plan view of drill hole collar locations and appropriate sectional views.</p>	<p>Diagrams have been provided within the text of the announcement to provide context and location of the drill results in relation to the tenement boundaries.</p>
Balanced reporting	<p>Where comprehensive reporting of all Exploration Results is not practicable, representative reporting of both low and high grades and/or widths should be practiced to avoid misleading reporting of Exploration Results.</p>	<p>All results can be found in Table 1 & 2.</p>
Other substantive exploration data	<p>Other exploration data, if meaningful and material, should be reported including (but not limited to): geological observations; geophysical survey results; geochemical survey results; bulk samples – size and method of treatment; metallurgical test results; bulk density,</p>	<p>The prospect where the drilling was completed, was an area of geological interest determined during the 2022 field season and geophysical interpretation by Killi Resources.</p>

Criteria	JORC Code explanation	Commentary
Further work	<p>groundwater, geotechnical and rock characteristics; potential deleterious or contaminating substances.</p> <p>The nature and scale of planned further work (eg tests for lateral extensions or depth extensions or large-scale step-out drilling).</p> <p>(g) Diagrams clearly highlighting the areas of possible extensions, including the main geological interpretations and future drilling areas, provided this information is not commercially sensitive.</p>	<p>Killi Resources plans to carry out further exploration work programs on the tenement, including further geochemical and drilling programs.</p> <p>Diagrams have been completed as in interpretation of the geology intersected and logged downhole.</p>