

4 March 2025

# Lady Grey Diamond Drilling Restarted

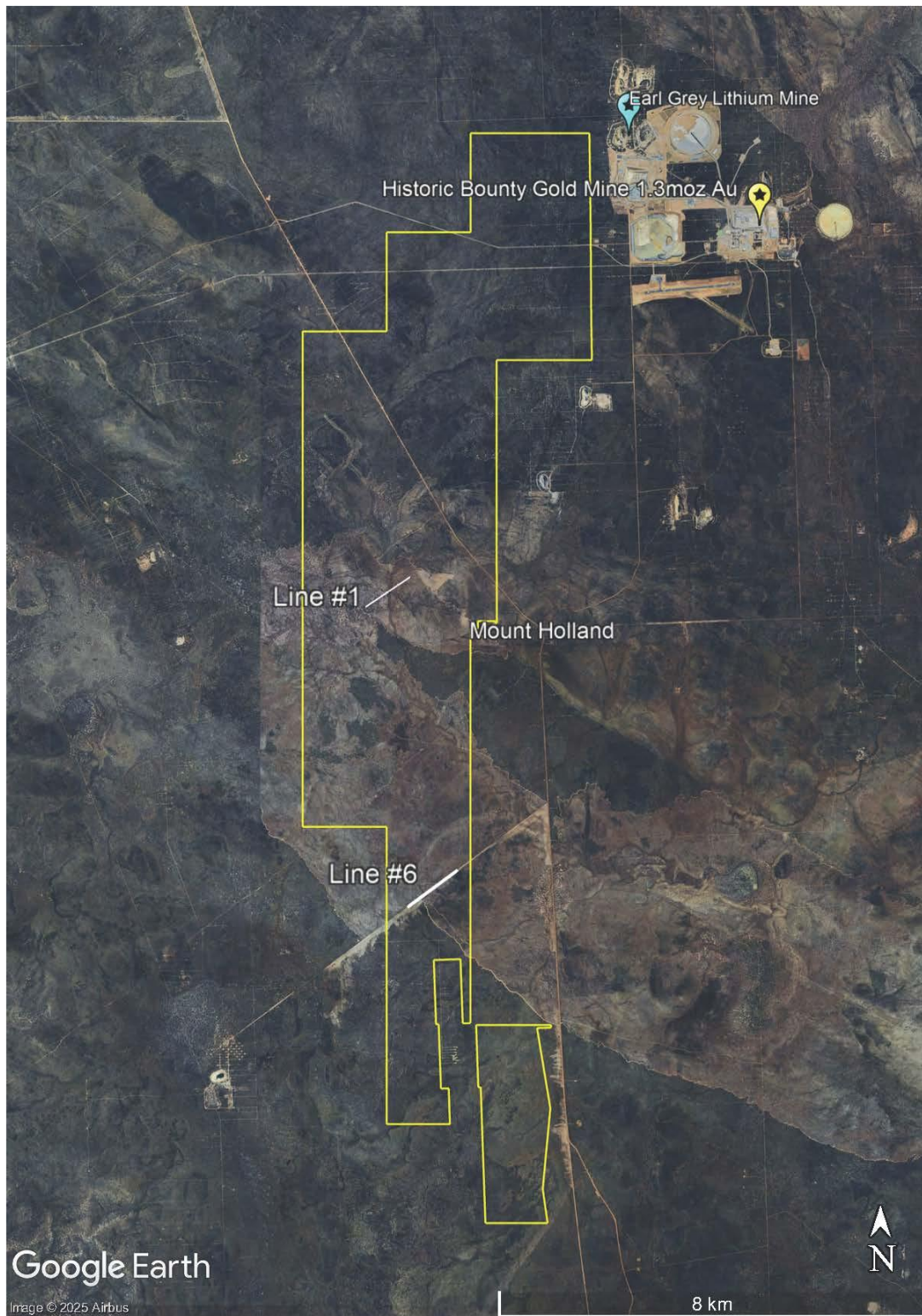
- **Diamond Drilling of the high priority Modelled MLEM Conductor Plate under EM Line #1 commenced**
- **MLEM Survey Line #1 target is aligned with a significant surface gold geochemical anomaly (256ppb Au) coincident with a regional structural zone favourable for hosting gold (ASX 24 Sept 2024)**
- **Historic Bounty Gold Mine which produced ~1.3 Moz Au<sup>1</sup> on Covalent Lithium's Mount Holland mine site, located adjacent to Lady Grey Gold Prospect**

---

**Lanthanein Resources Limited (ASX: LNR)** ("Lanthanein" or the "Company") is pleased to announce the commencement of diamond drilling at the Company's Lady Grey Project at Mt Holland in WA's Yilgarn. The drilling is to test a modelled conductor plate under Moving Loop EM (MLEM) Survey Line #1 (refer ASX release 24 September 2024). This first hole is to be drilled to a depth of approximately 325m with a second hole to be drilled on the same line approximately 200m to the east to a depth of approximately 350m.

**Mr Brian Thomas, Technical Director of Lanthanein commented:** "We are really very excited to finally get the diamond drill bit spinning again to test the high ranking modelled EM conductor plate under Line #1 which coincides with the 256 ppb Au UFF soil anomaly (ASX 22 April 2024). The approvals process for Line #1 has been rather protracted with the need the flora and fauna survey report with DEMIRS and the heritage survey by Ballardong Aboriginal Corporation and their heritage consultants to be completed first.

*There were also significant delays with finalising the drilling of the plate under Line #6 with a bushfire in the Mt Holland at the end of January and early February causing disruption to drilling operations. We are grateful to Terra Drilling being able to step in on short notice to drill the final two diamond holes of the programme."*



**Figure 1: Lady Grey Project tenement E77/2143 outline (yellow), MLEM Drill Lines (white) overlain on a Google Earth satellite photo image.**

**ADDRESS**

Level 8, 99 St Georges Terrace  
Perth WA 6000

**PHONE**

+61 (08) 9486 4036

**ABN**

96 095 684 389

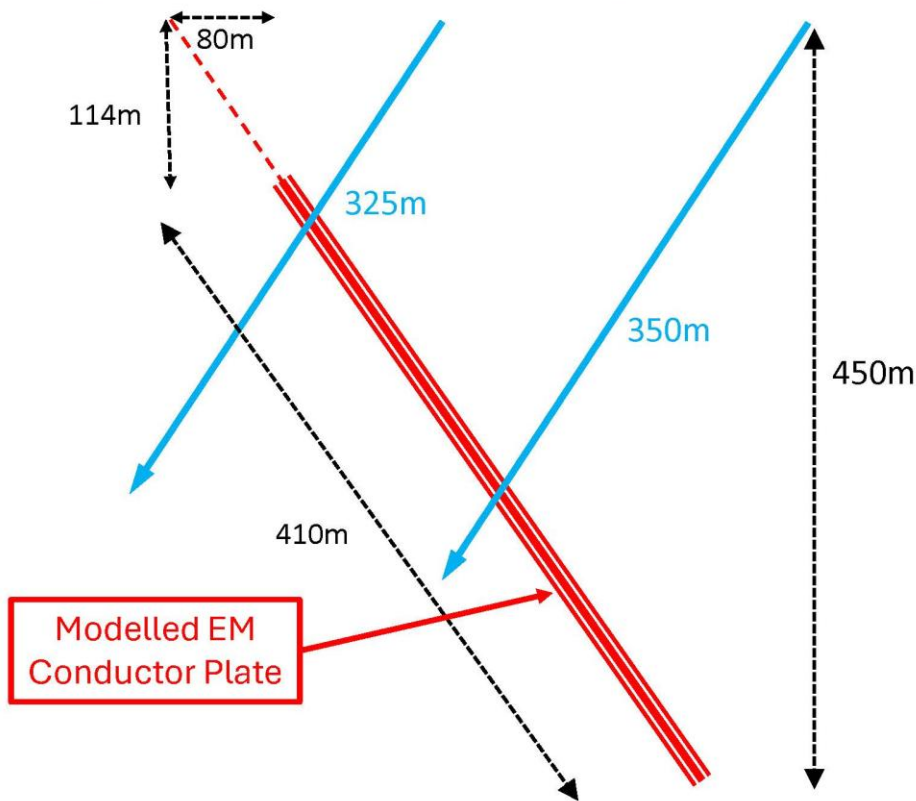
**WEBSITE**

[www.lanthanein.com](http://www.lanthanein.com)



**Figure 2: Terra Drilling diamond drilling rig on site at Lady Grey Project Mt Holland**

The modelled conductor plate under MLEM Line #1 is being drilled from the existing historical access and grid lines which have been refurbished. The modelled conductor plate is 114m below surface and dips to the east and is being drill tested with diamond drill holes as proposed in Figure 3.



**Figure 3: Modelled Conductor Plate (in Red) with Drill Holes Traces (in Blue) superimposed on Google Earth image and cross section below**

**ADDRESS**

Level 8, 99 St Georges Terrace  
Perth WA 6000

**PHONE**

+61 (08) 9486 4036

**ABN**

96 095 684 389

**WEBSITE**

www.lanthanein.com

This announcement has been authorised for release by the Directors of the Company.

For additional information please visit our website at [www.lanthanein.com](http://www.lanthanein.com)

**LANTHANEIN RESOURCES LTD**

The information referred to in this announcement relates to the following source(s):

<sup>1</sup> source: <https://portergeo.com.au/index.asp>.

**Forward Looking Statements**

This announcement includes forward-looking statements that are only predictions and are subject to known and unknown risks, uncertainties, assumptions and other important factors, many of which are beyond the control of Lanthanein, the directors and the Company's management. Such forward-looking statements are not guarantees of future performance.

Examples of forward-looking statements used in this announcement include use of the words 'may', 'could', 'believes', 'estimates', 'targets', 'expects', or 'intends' and other similar words that involve risks and uncertainties. These statements are based on an assessment of present economic and operating conditions, and on a number of assumptions regarding future events and actions that, as at the date of announcement, are expected to take place.

Actual values, results, interpretations or events may be materially different to those expressed or implied in this announcement. Given these uncertainties, recipients are cautioned not to place reliance on forward-looking statements in the announcement as they speak only at the date of issue of this announcement. Subject to any continuing obligations under applicable law and the ASX Listing Rules, Lanthanein does not undertake any obligation to update or revise any information or any of the forward-looking statements in this announcement or any changes in events, conditions or circumstances on which any such forward-looking statement is based.

This announcement has been prepared by Lanthanein Resources Limited. The document contains background Information about Lanthanein Resources Limited current at the date of this announcement. The announcement is in summary form and does not purport to be all inclusive or complete. Recipients should conduct their own investigations and perform their own analysis in order to satisfy themselves as to the accuracy and completeness of the information, statements and opinions contained in this announcement. The announcement is for information purposes only. Neither this announcement nor the information contained in it constitutes an offer, invitation, solicitation or recommendation in relation to the purchase or sale of shares in any jurisdiction.

The announcement may not be distributed in any jurisdiction except in accordance with the legal requirements applicable in such jurisdiction. Recipients should inform themselves of the restrictions that apply to their own jurisdiction as a failure to do so may result in a violation of securities laws in such jurisdiction. This announcement does not constitute investment advice and has been prepared without taking into account the recipient's investment objectives, financial circumstances or particular needs and the opinions and recommendations in this announcement are not intended to represent recommendations of particular investments to particular persons.

**ADDRESS**

Level 8, 99 St Georges Terrace  
Perth WA 6000

**PHONE**

+61 (08) 9486 4036

**ABN**

96 095 684 389

**WEBSITE**

[www.lanthanein.com](http://www.lanthanein.com)

Recipients should seek professional advice when deciding if an investment is appropriate. All securities transactions involve risks, which include (among others) the risk of adverse or unanticipated market, financial or political developments. To the fullest extent of the law, Lanthanein Resources Limited, its officers, employees, agents and advisers do not make any representation or warranty, express or implied, as to the currency, accuracy, reliability or completeness of any information, statements, opinion, estimates, forecasts or other representations contained in this announcement. No responsibility for any errors or omissions from the announcement arising out of negligence or otherwise is accepted.

This release includes exploration results the Company has previously reported 22 & 29 April, 15 May, 16 July and 24 September 2024. The Company confirms that it is not aware of any new information or data that materially affects the information included in previous announcements (as may be cross referenced in the body of this announcement) and that all material assumptions and technical parameters underpinning the exploration results continue to apply and have not materially changed.