



Managing Exploration Risk to Deliver Shareholder Value

October 2006

This is not a disclosure document. Any material used in this presentation is a summary of selected data, and any investor in Legend Mining Limited should refer to all Legend Mining Limited ASX releases and statutory reports before considering to invest in the company.

Any forward looking information in this presentation has been prepared on the basis of a number of assumptions that may prove not to be correct. Neither Legend Mining Limited, nor its officers, employees and advisors make or give any representation, warranty or guarantee in relation to this presentation.

Legend Mining Limited reserves the right to update, amend or supplement the Information in this presentation at any time in its absolute discretion without incurring any obligation to do so.

Chairman

Michael Atkins

Managing Director

Mark Wilson

Technical Director

Bob Perring

Company Secretary

Tony Walsh

Non-Executive Director

Dermot Ryan

Exploration Manager

Derek Waterfield

Shares 861,564,429

Options 305,536,107

Cash \$6M

Capitalisation \$34.4M at \$0.04/share

Loans \$3.1M (Environmental Bond Facility)



Gold Resources

Gidgee 510,000 oz.

Mt Gibson 559,000 oz.

TOTAL 1,069,000 oz.



Gidgee Mill: 650,000 tpa



Mt Gibson Mill: 1M tpa



Gidgee (Gum Creek)

Drilling for new gold systems.



Mt Gibson

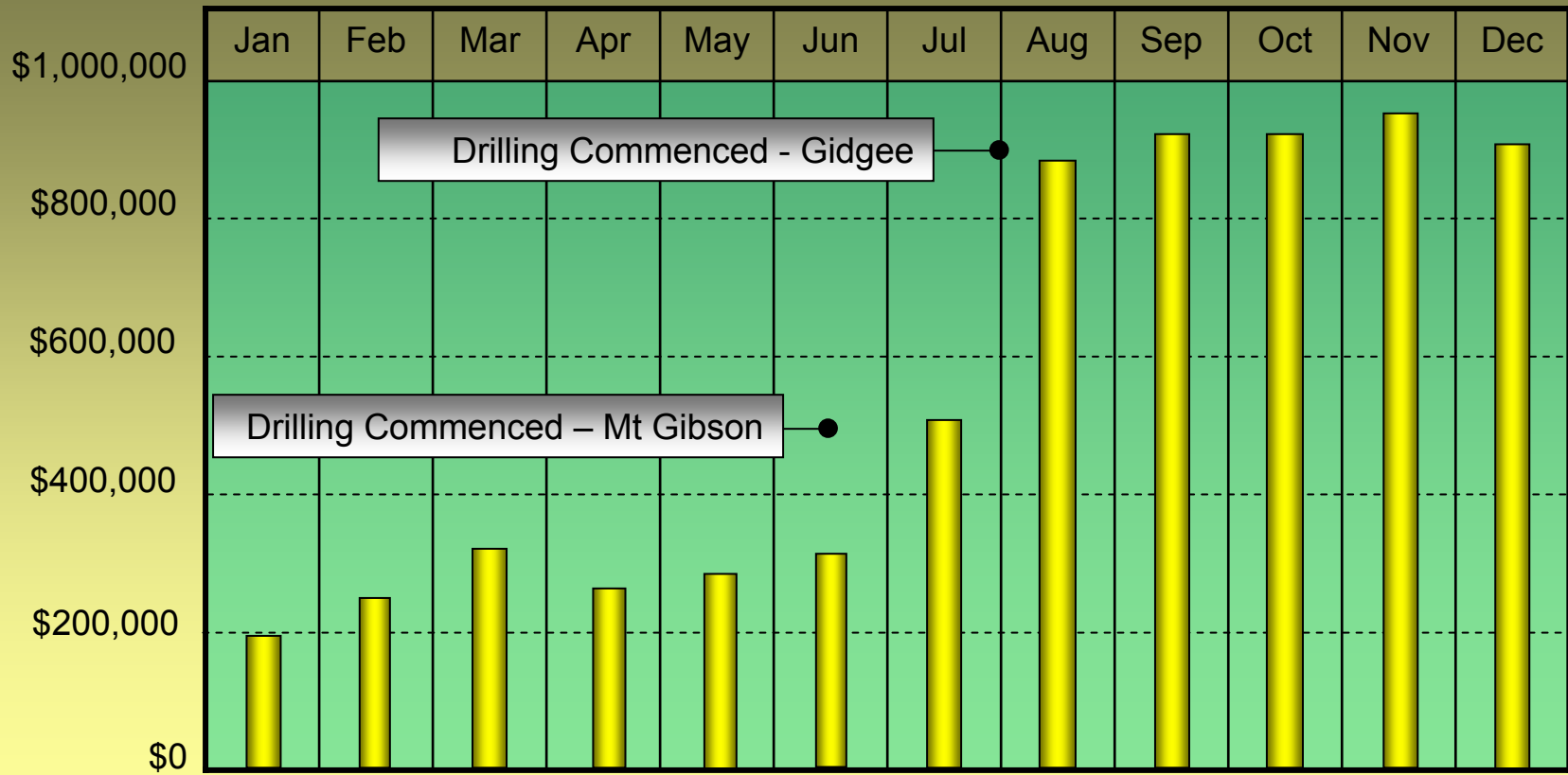
Evaluating a large zinc-copper-gold system.

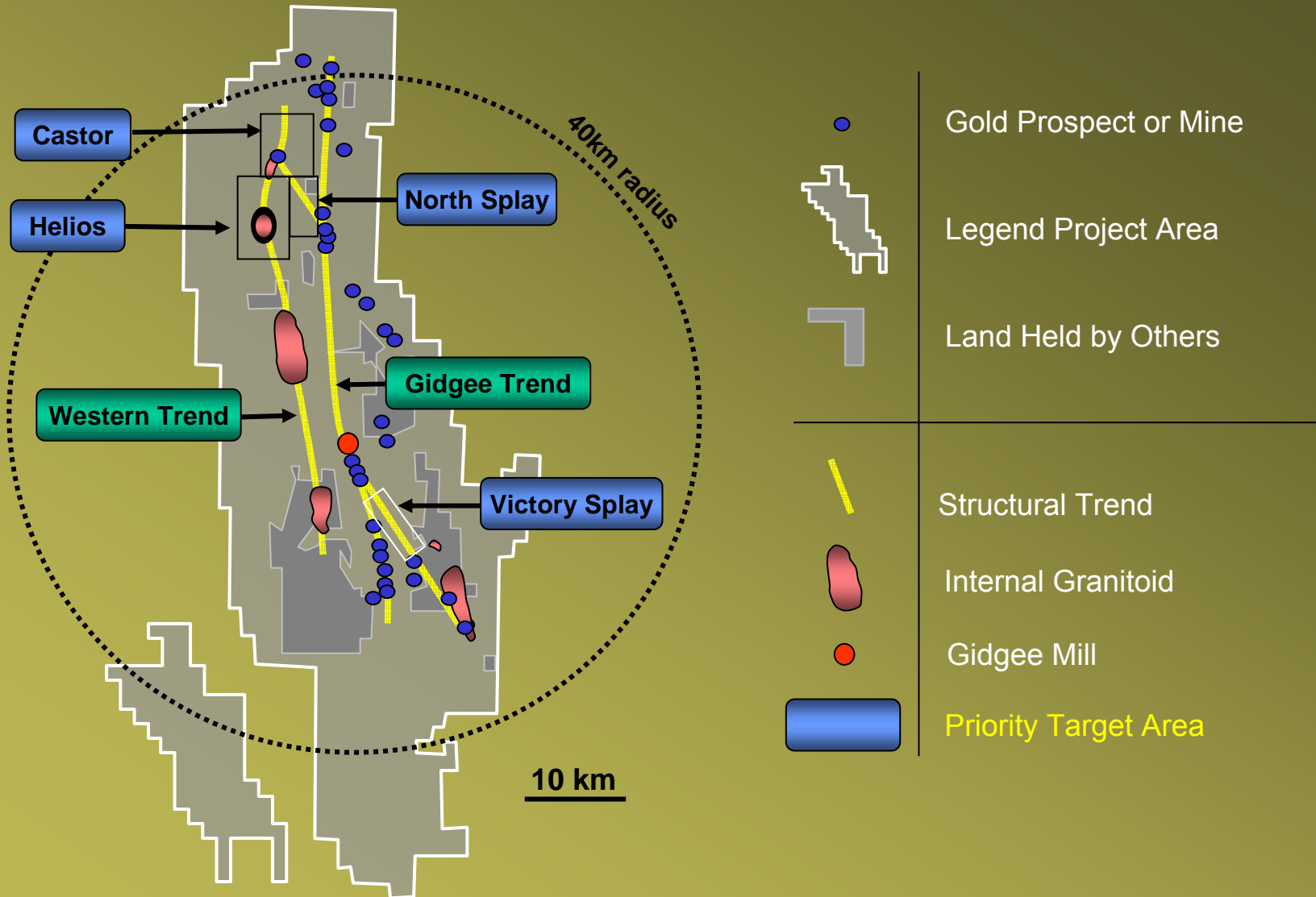


Pilbara

Copper-zinc and nickel potential.

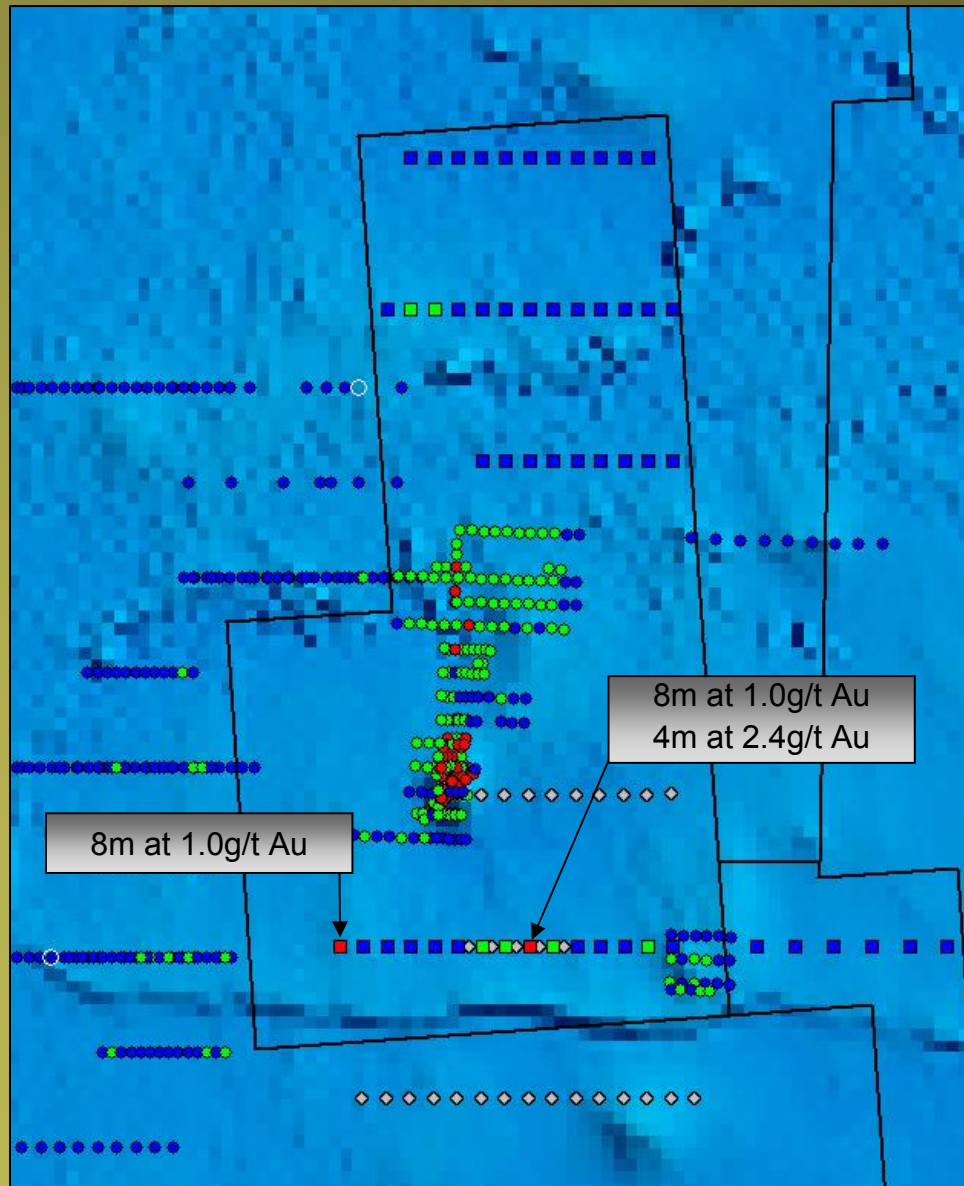
Forecast Rate of Exploration Expenditure - 2006





Castor Target Area

Orion & Hunter Prospects



RAB/Aircore Drilling
(Maximum In-hole Assay)

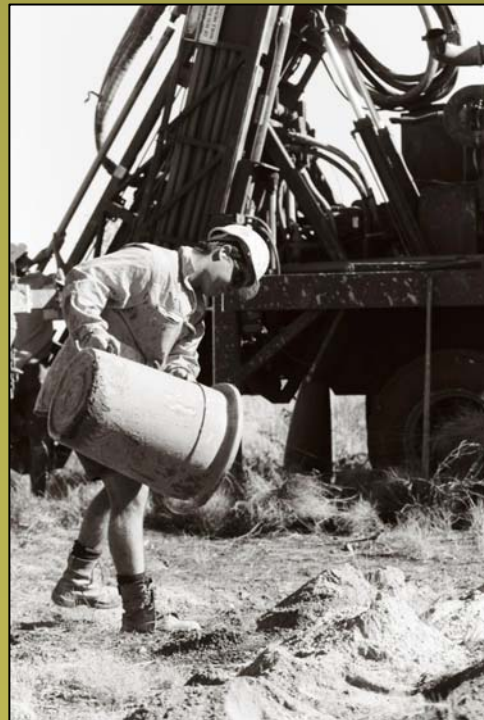
- >1.0g/t Au
- 0.1 – 1.0g/t Au
- 0 – 0.1g/t Au

1000m

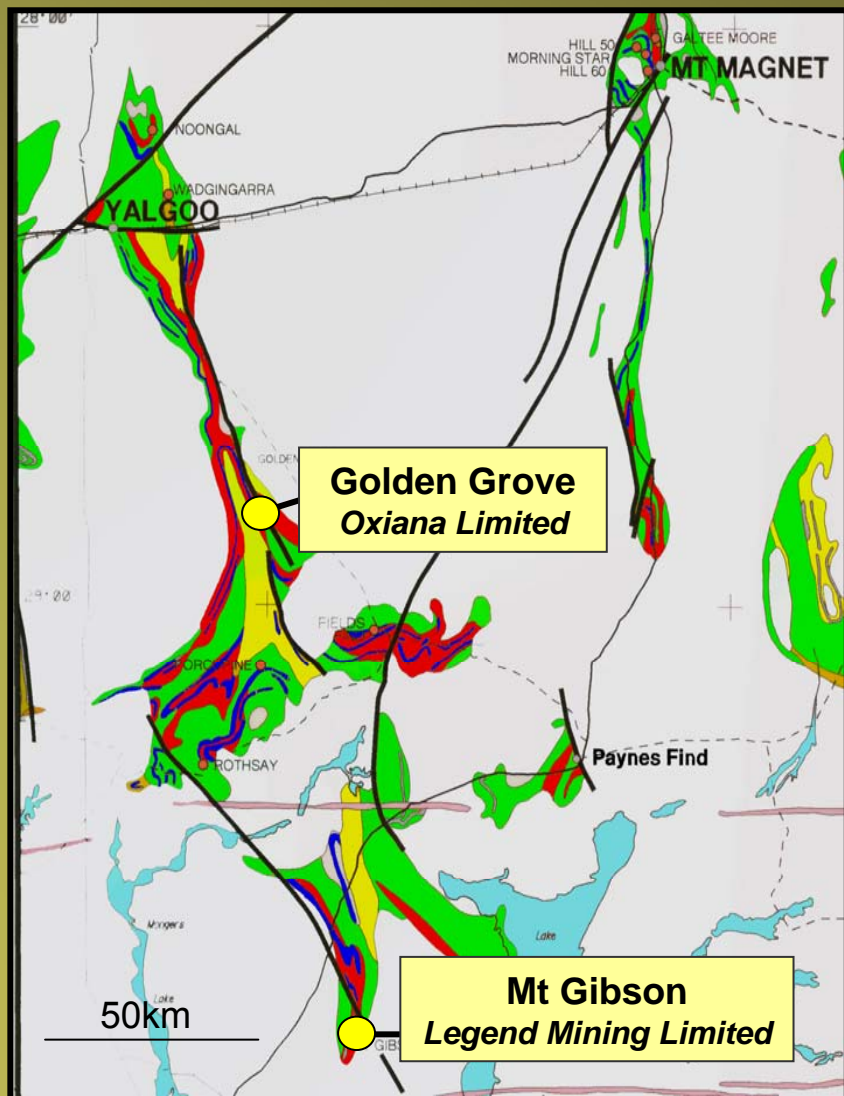
- Historical Hole
- Legend Hole (assays received)
- ◇ Legend Hole (assays pending)

Gidgee (Gum Creek) Project

Overview



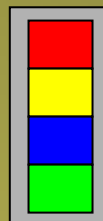
- gold
- 2,500km² of exploration land (100% Legend)
- 650,000 tpa mill
- 510,000 oz. resource
- 60,000m of drilling planned for H2 2006
- 13,000m of drilling & assaying completed
- favourable geology to find large ore bodies
- 2006 KPI – 5 new gold systems



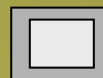
Golden Grove

Resource: 17.0Mt @ 5.9% Zn, 1.9% Cu, 1.3g/t Au

One of the top 15 volcanic-hosted massive sulphide (V-HMS) deposits in the world.

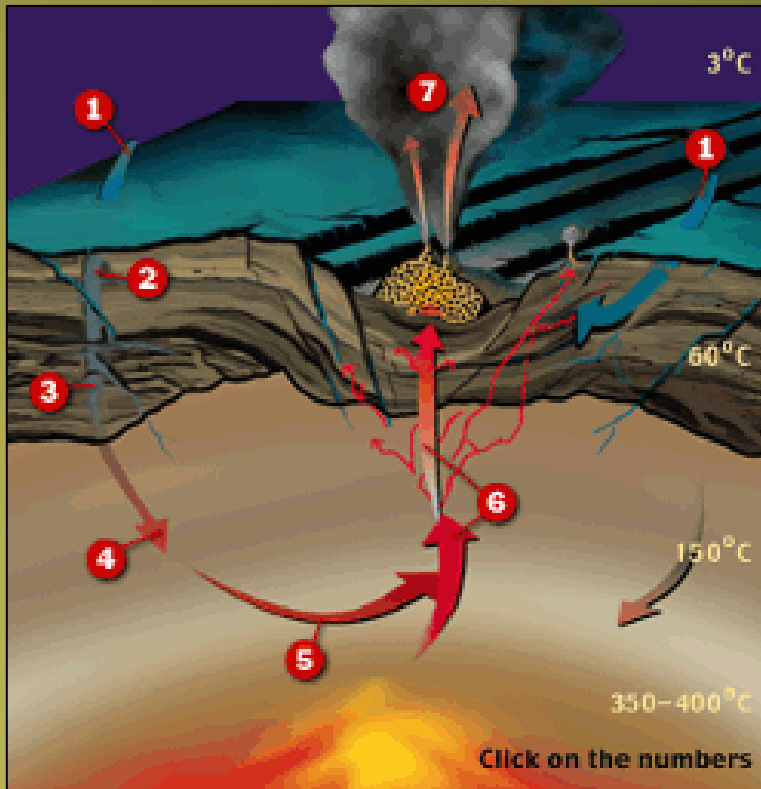


Greenstone Sequence



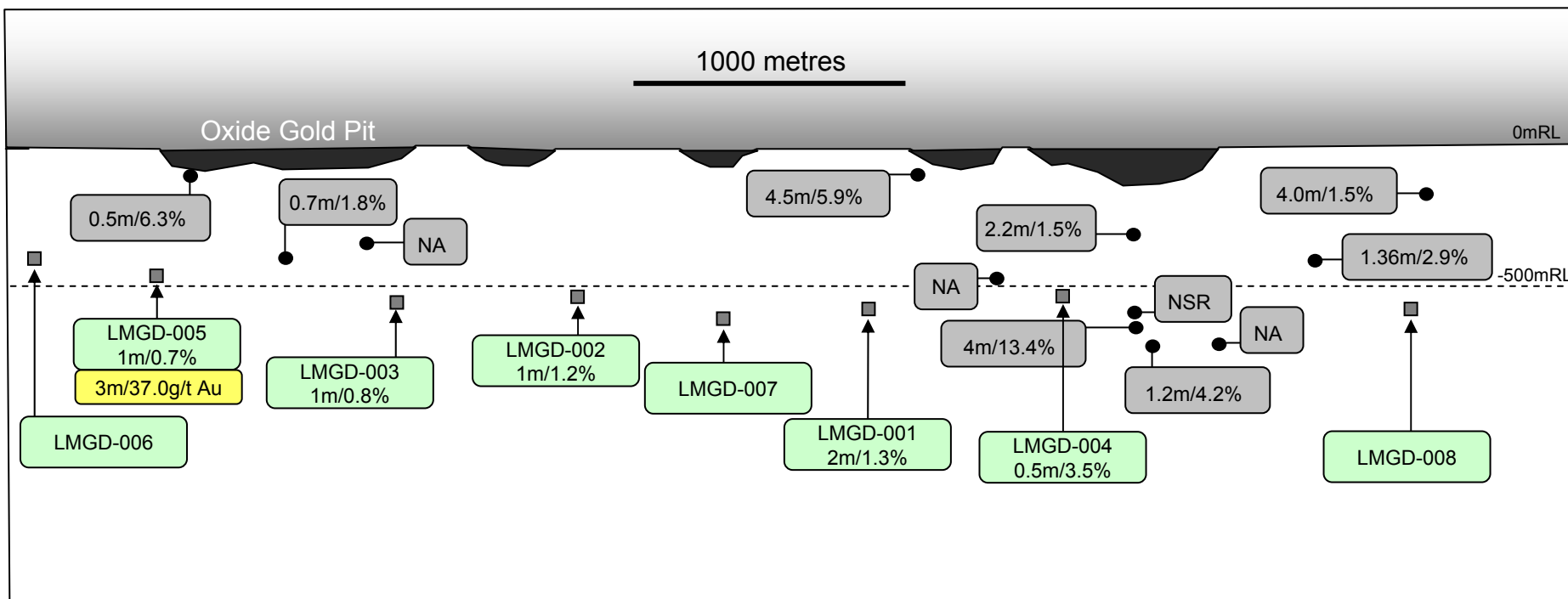
Granite

Volcanic-hosted massive sulphide (V-HMS) deposits



Large Zinc Footprint





Legend Mining Limited

■ Completed Diamond Drill Hole

LMGD-004
0.5m/3.5%

Hole Number (metres/zinc %)

LMGD-005
3m/37.0g/t Au

Hole Number (metres/gold in grams per tonne)

Historical Drilling

● 0.7m/1.85%

Completed Hole (metres/zinc %)

● NA

Hole Not Assayed for Zinc

● NSR

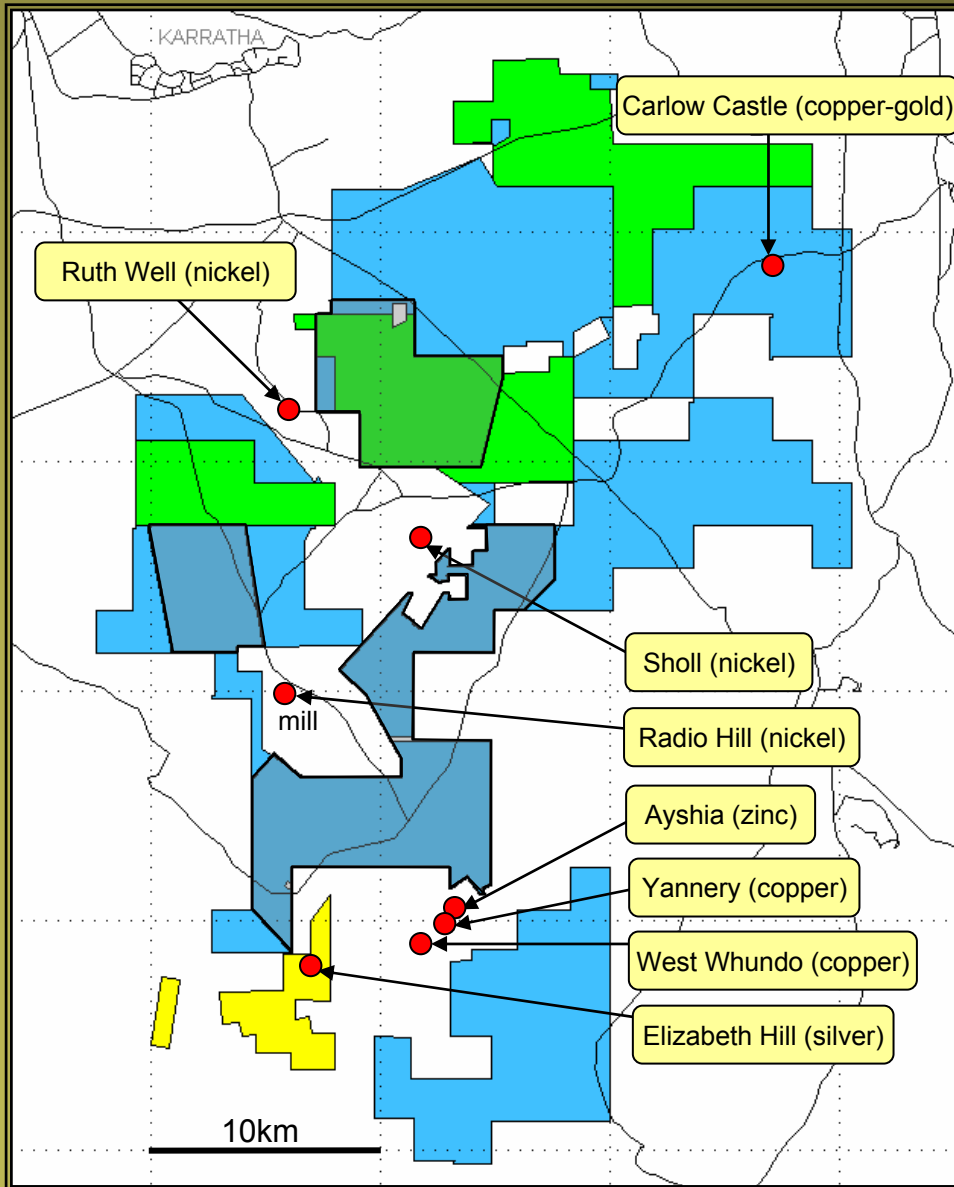
Hole Assayed – No Significant Zinc Result

Mt Gibson Project

Overview



- zinc-copper-gold
- 220km² of exploration land (100% Legend)
- 1M tpa mill
- 559,000 oz. resource
- large base metal system (plus 5km long)
- 7,000m of deep diamond drilling planned for H2 2006
- 5,978m of drilling completed (8 holes)
- all holes contain zinc sulphide
- fertile environment for zinc ore body



- Legend (100%)**
Area: 447 km²
- Radio Hill JV (Legend earning 70%)**
JV Partner: Australian Nickel Mines
Area: 141 km²
- Munni Munni JV (Legend 30%)**
JV Partner: East Coast Minerals
Area: 18 km²
- V-TEM Survey Areas**





- nickel, copper-zinc, gold
- land holding of approximately 600km²
- two JVs, all other land 100% Legend
- strong strategic land positions adjacent to Whundo (Cu-Zn) & Ruth Well (Ni)
- V-TEM survey scheduled for 1 November 2006
- tenements scheduled for grant in early 2007



LEGEND

MINING LIMITED



www.legendmining.com.au