



LEGEND MINING LIMITED

Company Presentation – September 2015

DISCLOSURE



This is not a disclosure document. Any material used in this presentation is a summary of selected data, and any investor in Legend Mining Limited should refer to all Legend Mining Limited ASX releases and statutory reports before considering to invest in the company.

Any forward looking information in this presentation has been prepared on the basis of a number of assumptions that may prove not to be correct. Neither Legend Mining Limited, nor its officers, employees and advisors make or give any representation, warranty or guarantee in relation to this presentation.

Legend Mining Limited reserves the right to update, amend or supplement the Information in this presentation at any time in its absolute discretion without incurring any obligation to do so.

The information in this presentation that relates to exploration results is based on information compiled by Mr Derek Waterfield who is a member of the Australian Institute of Geoscientists and is a full time employee of Legend Mining Limited.

Mr Derek Waterfield has sufficient experience which is relevant to the style of mineralisation and type of deposit under consideration and to the activity which he is undertaking to qualify as a Competent Person as defined in the 2012 Edition of the 'Australasian Code for Reporting of Exploration Results, Mineral Resources and Ore Reserves' (the JORC Code).

Mr Derek Waterfield consents to the inclusion in this presentation of the matters that relate to exploration results in the form and context in which it appears.

ABOUT LEGEND

- ❖ ASX listed exploration company
- ❖ Market capitalisation ~\$20M (2B shares @ 1c)
- ❖ Cash and liquids ~\$10.8M (+\$6M 2015/2016)
- ❖ New Fraser Range Project – Rockford



Chairman
Michael Atkins



Managing Director
Mark Wilson



Exec. Director - Technical
Derek Waterfield



Company Secretary
Dennis Wilkins

PROJECT LOCATION

Located in northern
Fraser Range District

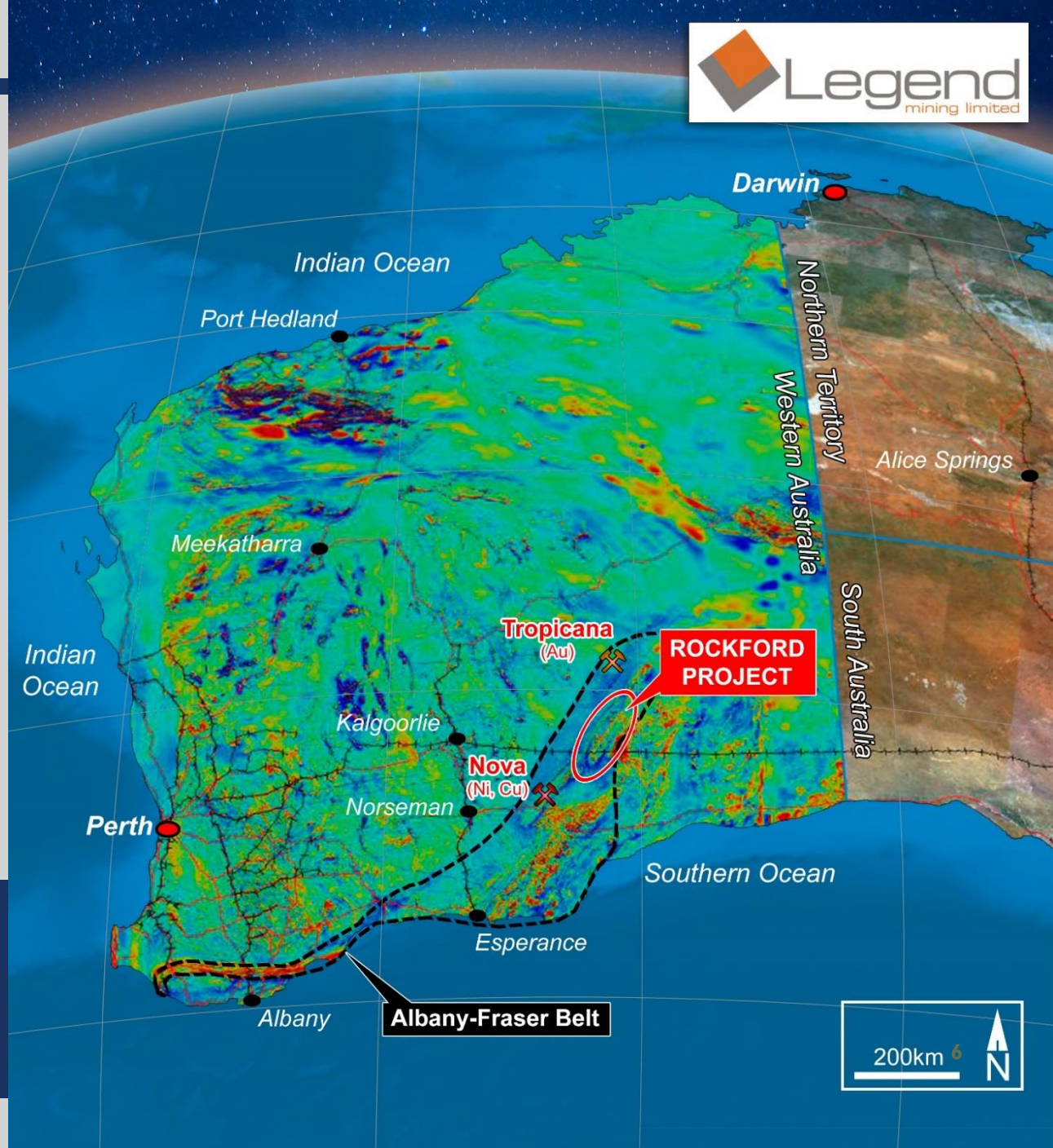
120km NE of Nova
100km S of Tropicana

Comprises eight
granted exploration
licences and two
applications covering
2,939km²

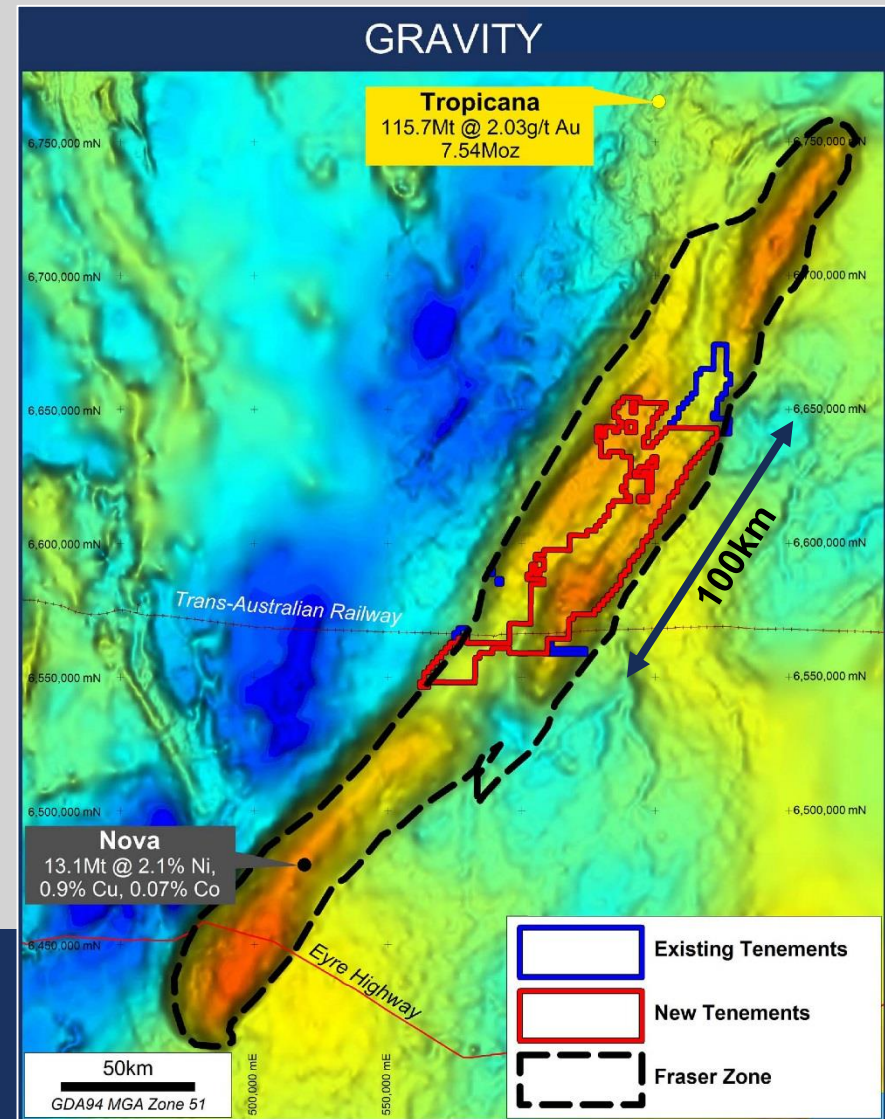
Infrastructure access

Project potential for

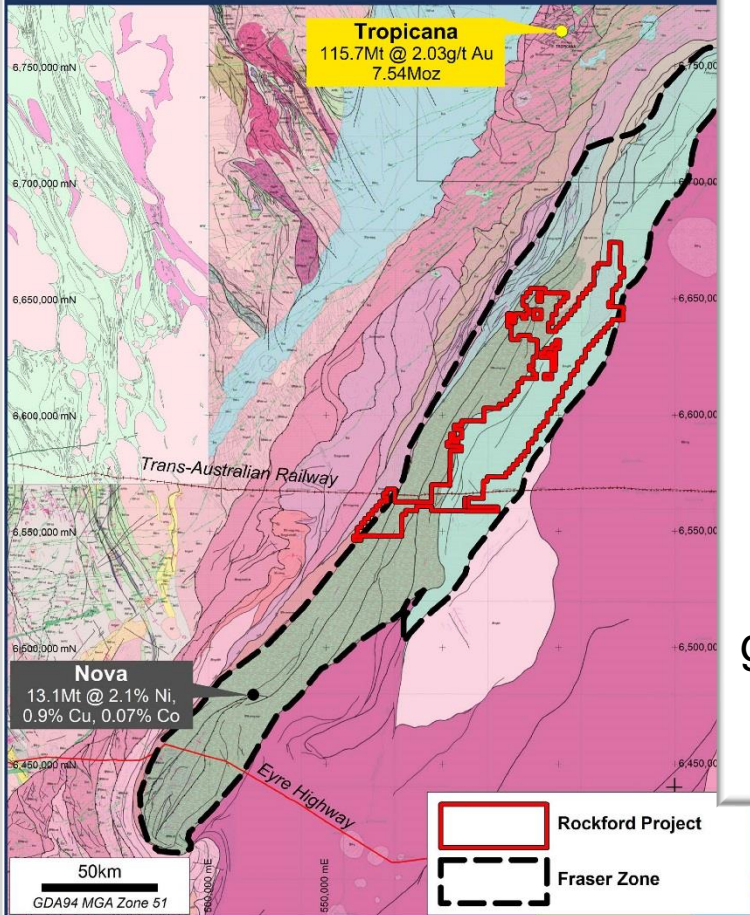
- Nova style Nickel-Copper
- Tropicana style Gold



- Biggest Block - 2,939km² contiguous tenure
 - Best Street - Fraser Zone (gravity, geology and aeromagnetics)
 - Project covers 100km strike of gravity high “ridge”, similar to Nova
 - High quality aeromagnetic and gravity data acquired with project allows direct targeting of mafic/ultramafic intrusives
 - Aircore drilling has identified prospective nickel host rocks
-
- **Rockford has all the “right” ingredients**



GEOLOGY

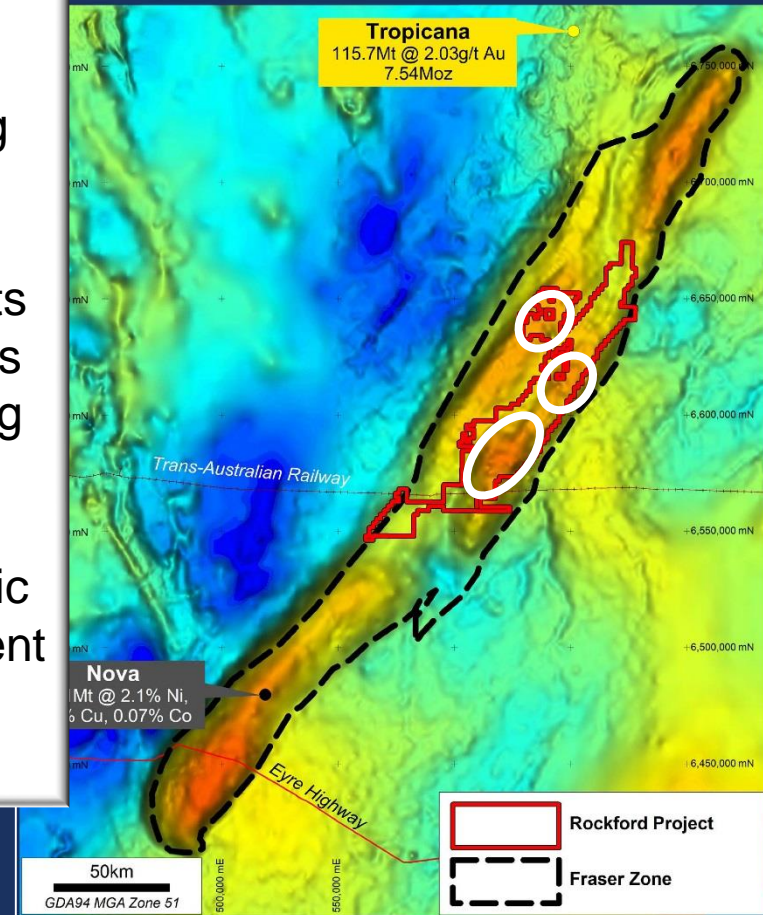


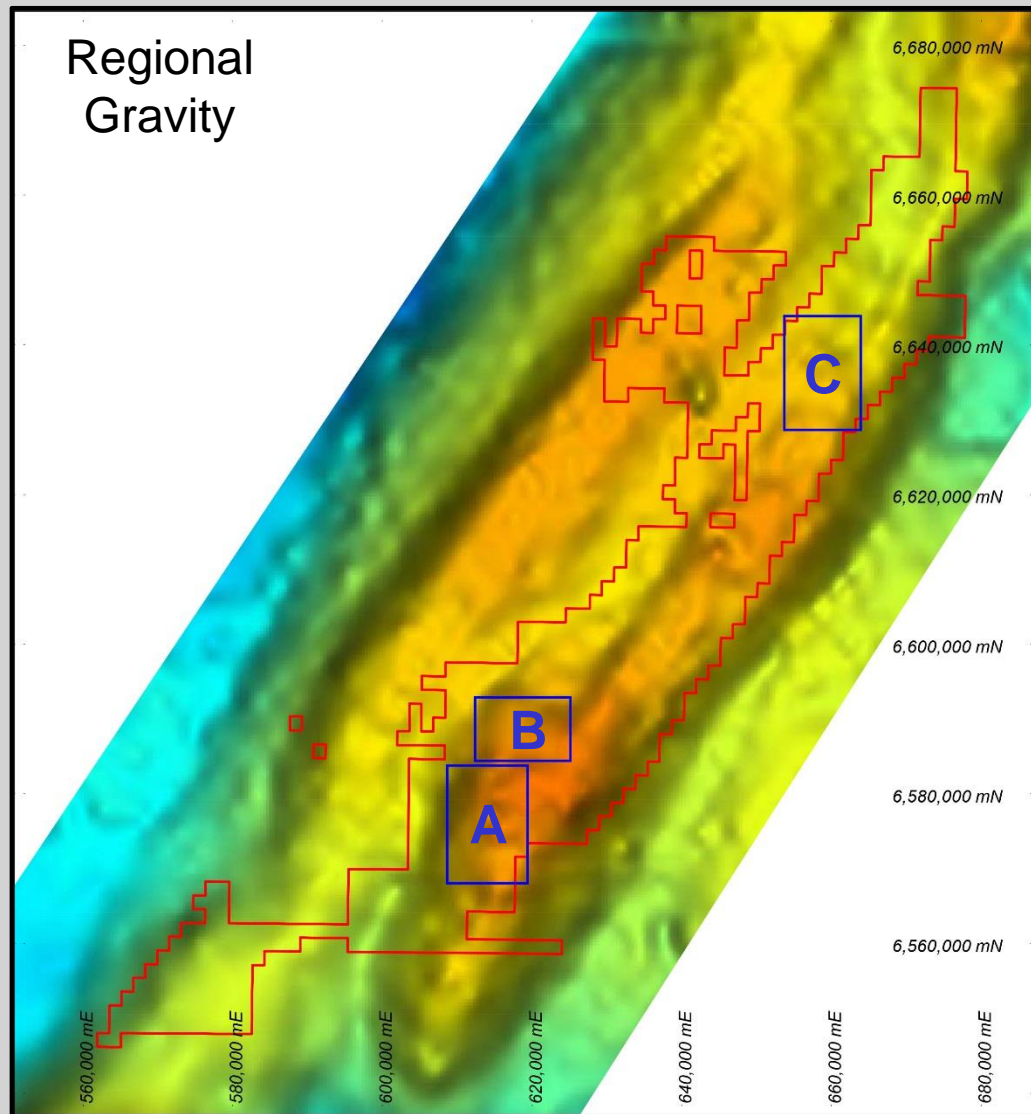
High quality
gravity data to
assist targeting

Gravity hot spots
show similarities
to “Nova” setting

Mafic / ultramafic
geology consistent
with gravity

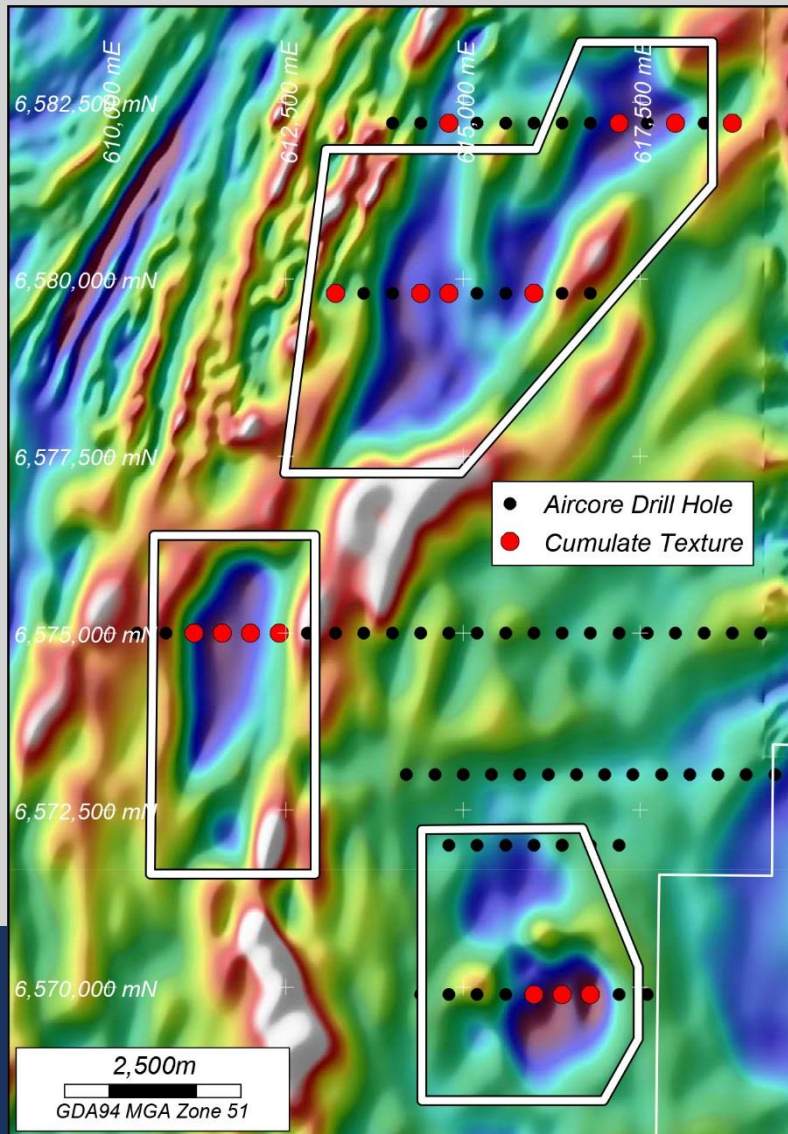
GRAVITY





Area Selection

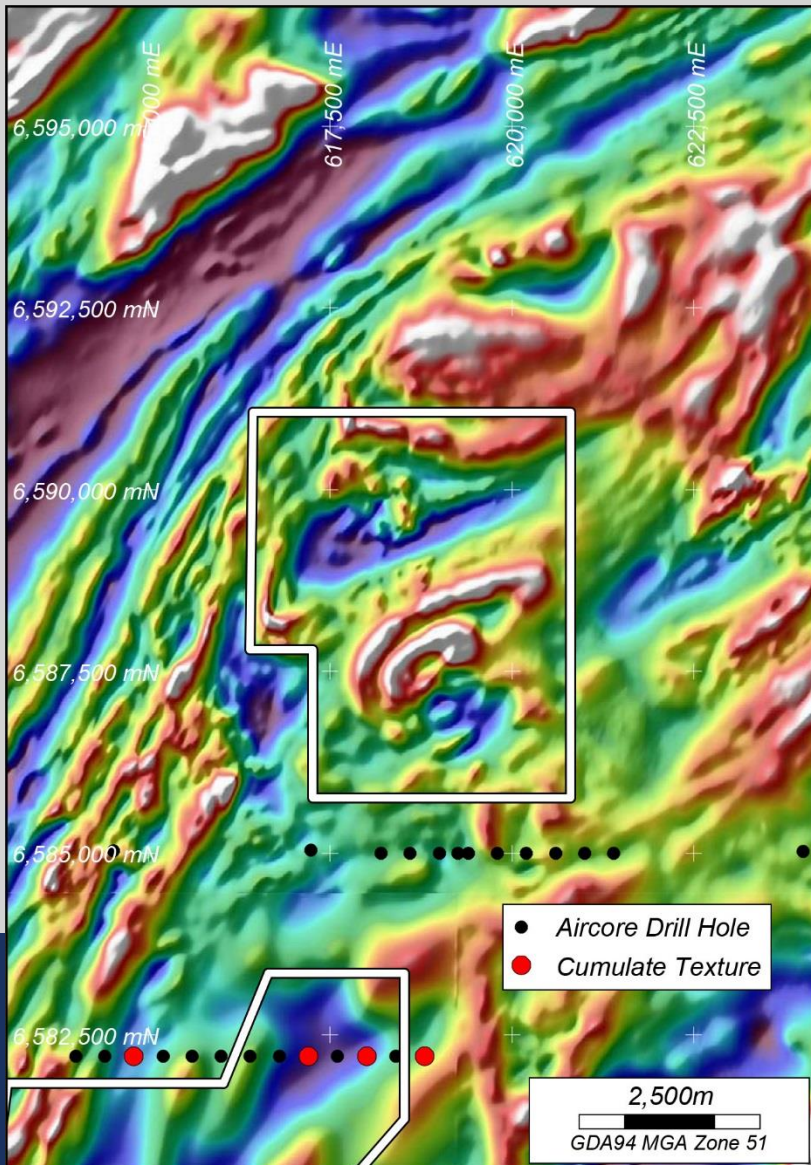
- Aeromagnetic data
- Detailed gravity data
- Aircore drilling
- Petrological descriptions
- Geochemical data
- Field reconnaissance
- Full data integration/interrogation



AREA A

- Three magnetic “lows” identified
- Aircore drilling intersected favourable cumulate nickel host rocks
- Demonstrated relationship between magnetic “lows” and intrusive mafic/ultramafic bodies
- Associated with broad gravity high

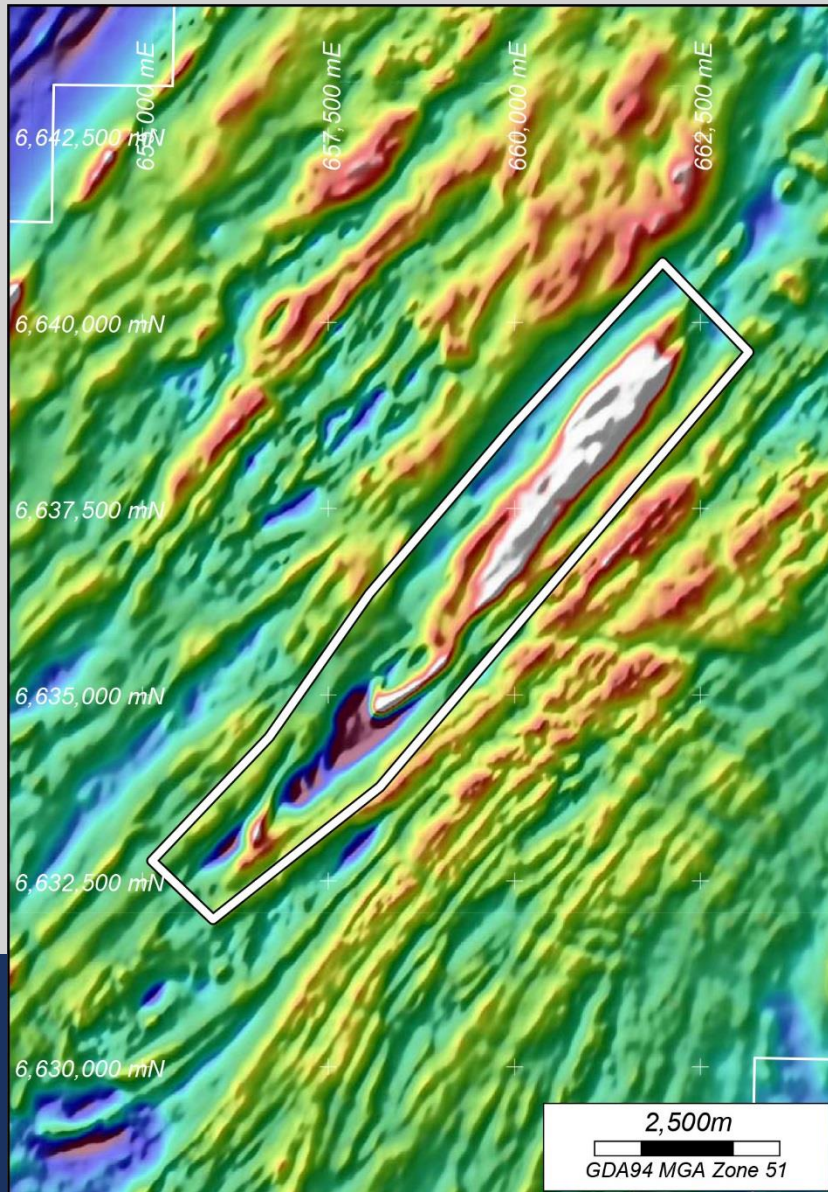




AREA B

- Two aeromagnetic “lows”
- Tightly folded magnetic high
- Structurally complex zone with shearing and tight folding
- Associated with broad gravity high





AREA C

- Large 10km aeromagnetic feature, with high and low components
- Feature bounded by regional scale SW-NE trending structures
- Feature relates to hinge zone of tightly folded sequence
- Moderate gravity response



- Nova discovery template
 - First 6 Months
 - *Data interpretation and integration*
 - *Target selection*
 - *Ground EM & Aircore drilling*
 - *define conductors*
 - *Drill test conductors*
- One drillhole from the next Nova

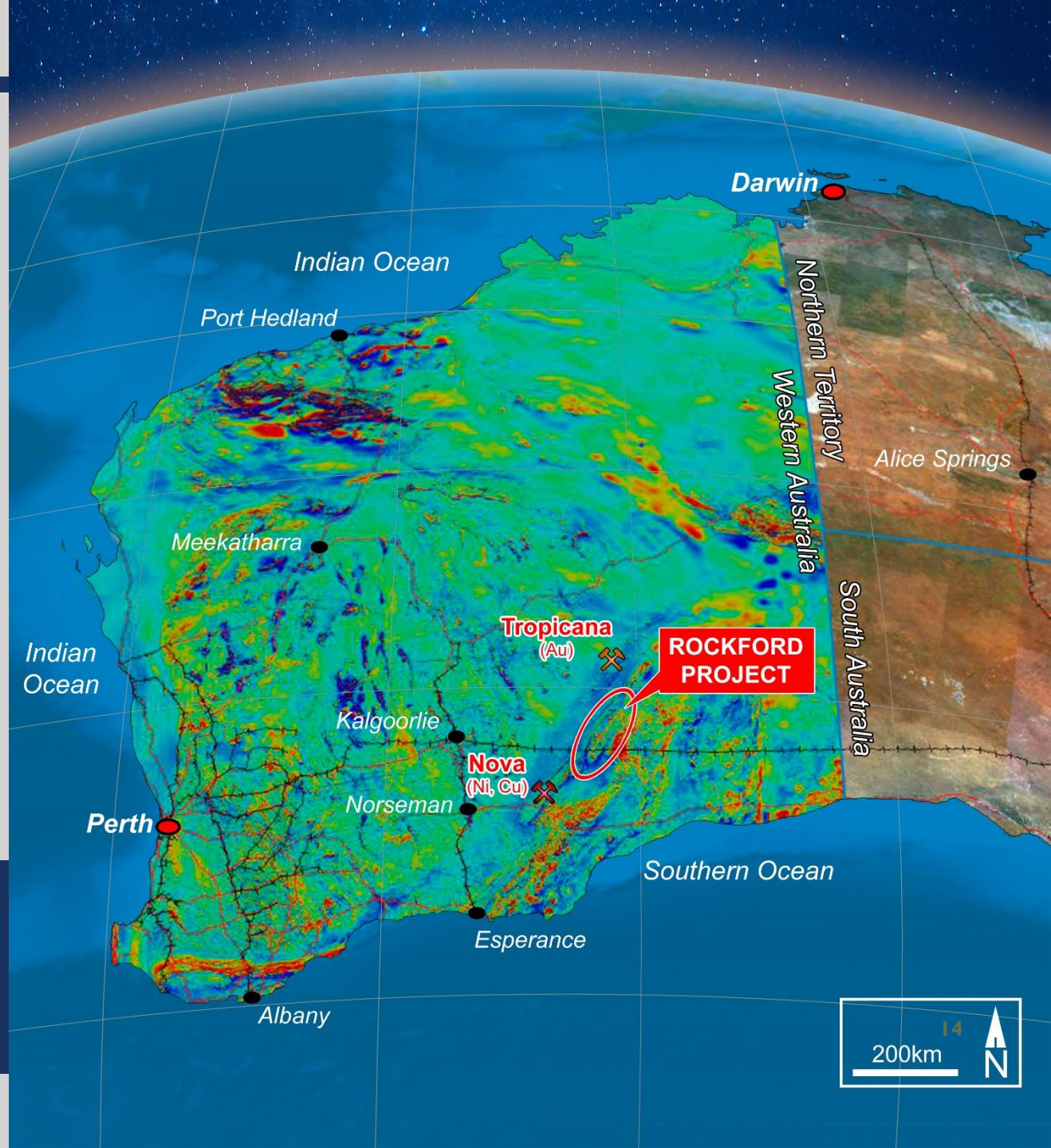


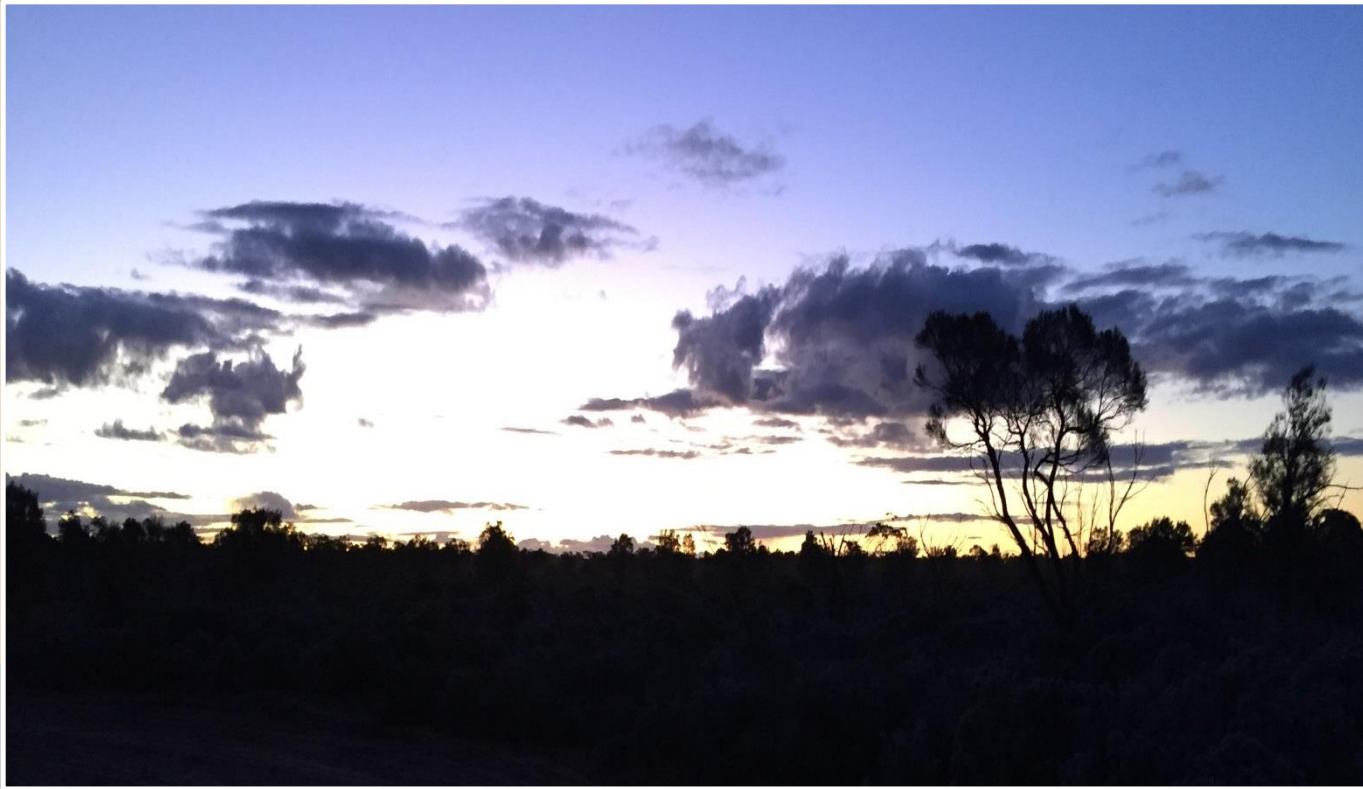
Highly Prospective Rockford Project

Well Funded

Experienced
Team

Grow
Shareholder
Value





THANK YOU FOR ATTENDING
LEGEND MINING LIMITED