



## A WELL-FUNDED EXPLORER IN THE FRASER RANGE

11 May 2016

ASX:LEG

# ABOUT LEGEND



- ❖ ASX listed exploration company
- ❖ Market capitalisation ~\$16.3M (2B shares @ 0.8c)
- ❖ Cash and liquids ~\$8.7M (+\$3M @ 4% December 2016)
- ❖ Fraser Range – Rockford Project



**Chairman**  
**Michael Atkins**



**Managing Director**  
**Mark Wilson**



**Exec. Director - Technical**  
**Derek Waterfield**



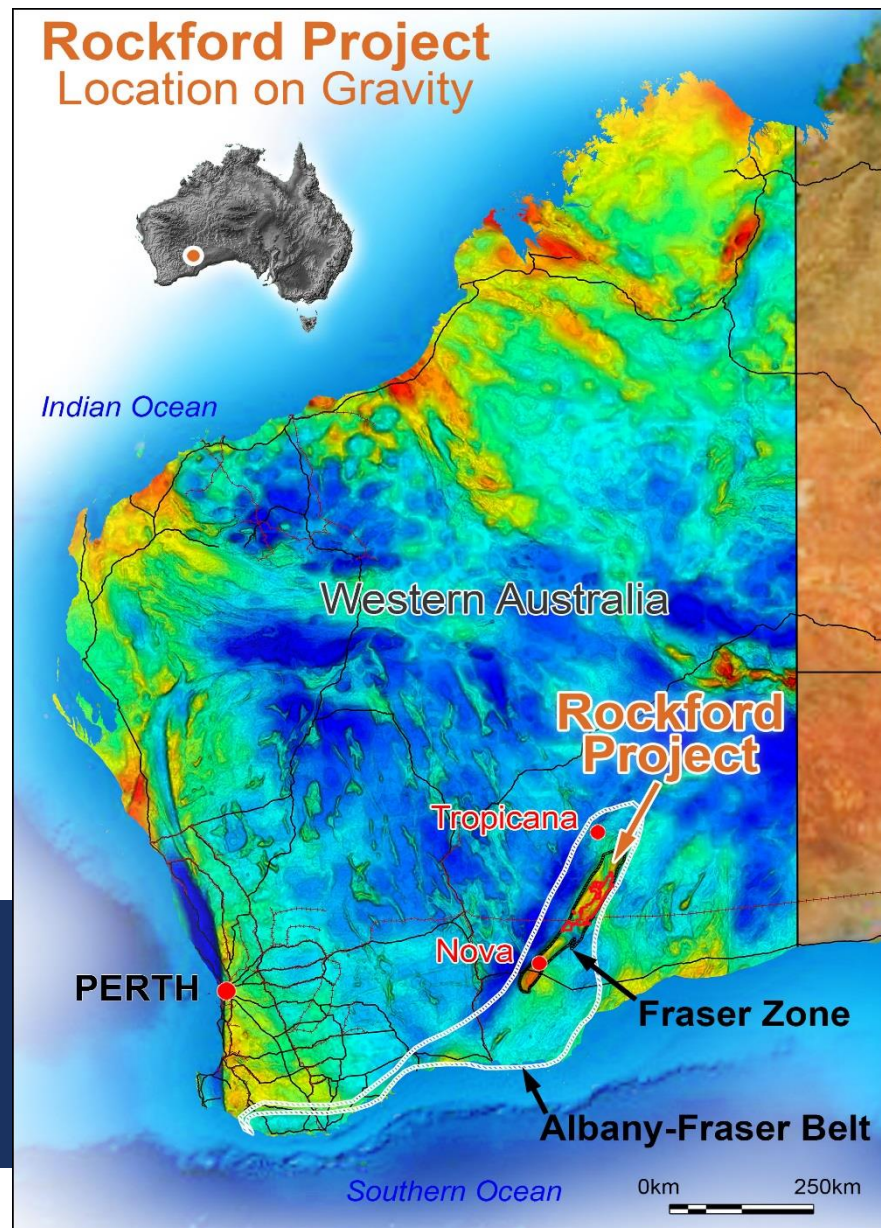
**Company Secretary**  
**Dennis Wilkins**



- Located in northern Fraser Range district
- Acquisition date – 09/2015
- 120km NE of Nova  
100km S of Tropicana
- 100% within Fraser Zone  
(18% of total area)
- Infrastructure access

### Project potential for

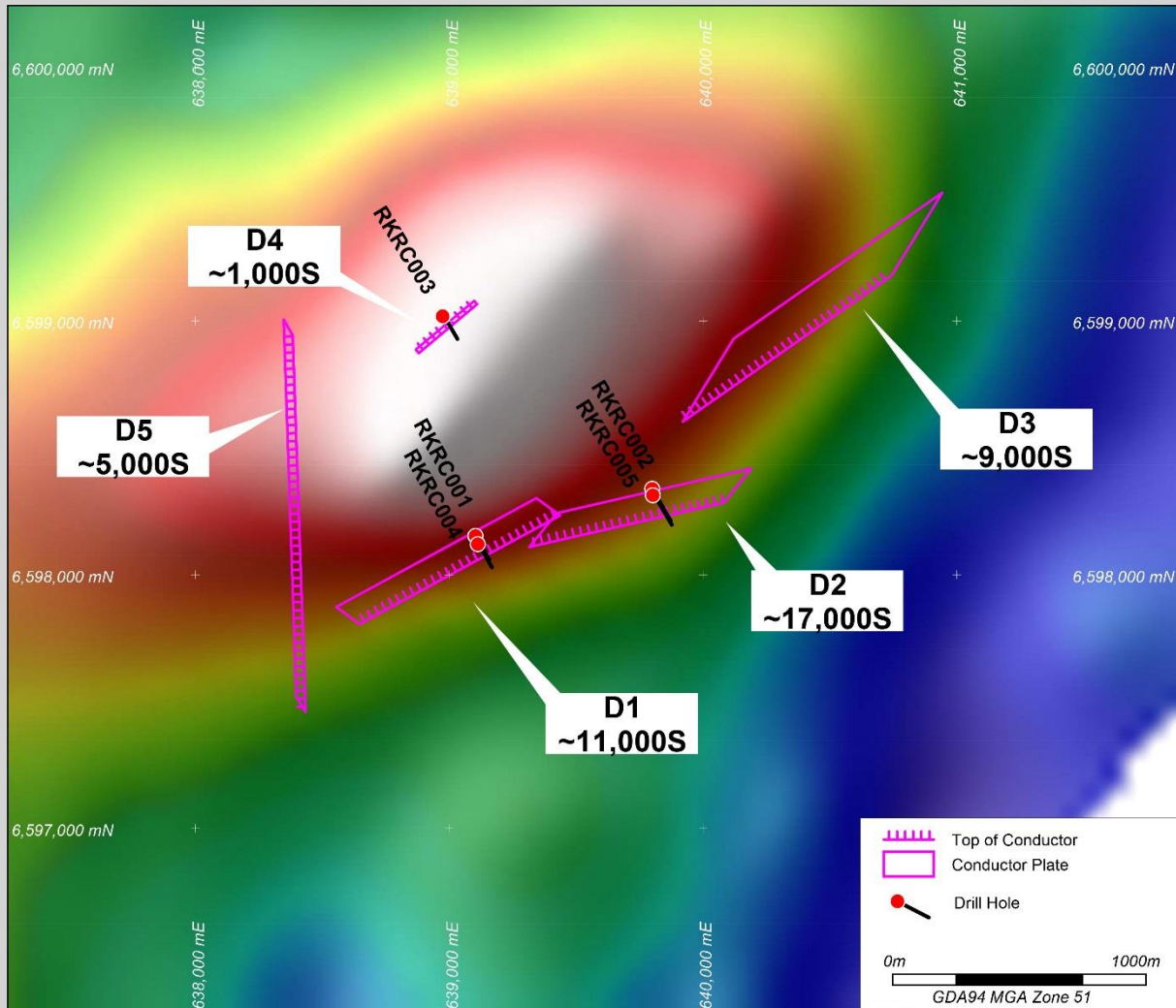
- Nova style Nickel-Copper
- Tropicana style Gold





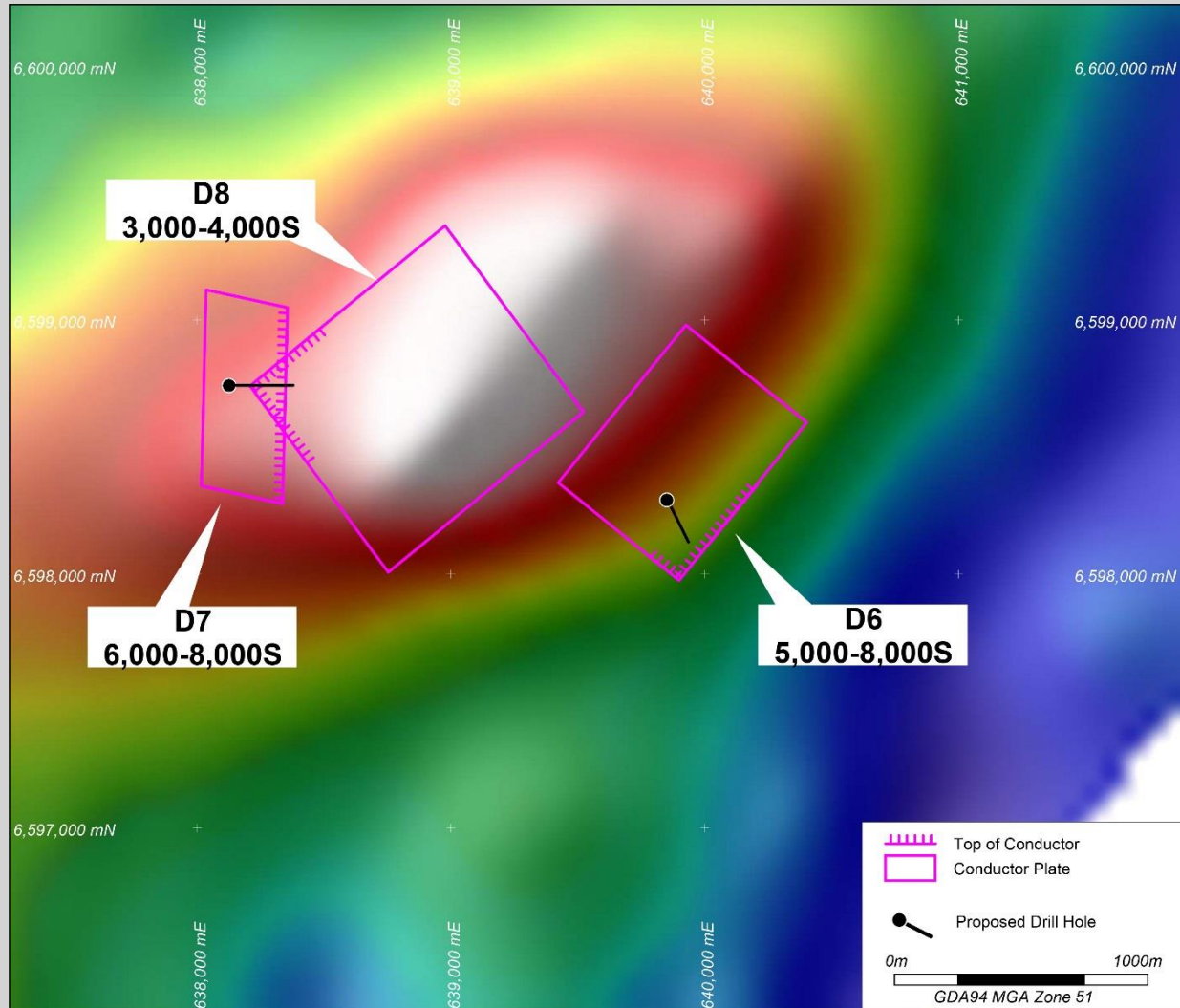
- Six target areas tested with MLTEM surveys
- Seven conductors identified  
5 at Area D / 1 at Area E /  
1 at Area F
- Five RC drillholes for 1,160m completed at Area D
- FLTEM and DHTEM surveys completed at Area D





## AREA D

- Five conductors identified associated with gravity feature
- RC drillholes tested conductors D1, D2 & D4
- D1 explained – 22m graphite schist from 174m
- D4 explained – DHTeM and assays
- FLTEM at D2 and D5



## AREA D

- Three new conductors ( D6, D7 & D8)
- Compelling drill targets
- Ground conditions/depth considerations - diamond drilling
- Core for geology

## FUTURE PROGRAMMES

- **Diamond drilling to test D6, D7 and D8**  
(planned late May 2016)
- **Regional aircore drilling ~5,000m and regional MLTEM surveys** (following diamond drilling programme)



# THANK YOU

LEGEND MINING LIMITED

ASX:LEG

# DISCLOSURE



This is not a disclosure document. Any material used in this presentation is a summary of selected data, and any investor in Legend Mining Limited should refer to all Legend Mining Limited ASX releases and statutory reports before considering to invest in the company.

Any forward looking information in this presentation has been prepared on the basis of a number of assumptions that may prove not to be correct. Neither Legend Mining Limited, nor its officers, employees and advisors make or give any representation, warranty or guarantee in relation to this presentation.

Legend Mining Limited reserves the right to update, amend or supplement the Information in this presentation at any time in its absolute discretion without incurring any obligation to do so.

The information in this presentation that relates to exploration results is based on information compiled by Mr Derek Waterfield who is a member of the Australian Institute of Geoscientists and is a full time employee of Legend Mining Limited.

Mr Derek Waterfield has sufficient experience which is relevant to the style of mineralisation and type of deposit under consideration and to the activity which he is undertaking to qualify as a Competent Person as defined in the 2012 Edition of the 'Australasian Code for Reporting of Exploration Results, Mineral Resources and Ore Reserves' (the JORC Code).

Mr Derek Waterfield consents to the inclusion in this presentation of the matters that relate to exploration results in the form and context in which it appears.