



A WELL-FUNDED EXPLORER IN THE FRASER RANGE

July / August 2016 Investor Presentation

ASX:LEG

DISCLOSURE



This is not a disclosure document. Any material used in this presentation is a summary of selected data, and any investor in Legend Mining Limited should refer to all Legend Mining Limited ASX releases and statutory reports before considering to invest in the company.

Any forward looking information in this presentation has been prepared on the basis of a number of assumptions that may prove not to be correct. Neither Legend Mining Limited, nor its officers, employees and advisors make or give any representation, warranty or guarantee in relation to this presentation.

Legend Mining Limited reserves the right to update, amend or supplement the Information in this presentation at any time in its absolute discretion without incurring any obligation to do so.

The information in this presentation that relates to exploration results is based on information compiled by Mr Derek Waterfield who is a member of the Australian Institute of Geoscientists and is a full time employee of Legend Mining Limited.

Mr Derek Waterfield has sufficient experience which is relevant to the style of mineralisation and type of deposit under consideration and to the activity which he is undertaking to qualify as a Competent Person as defined in the 2012 Edition of the 'Australasian Code for Reporting of Exploration Results, Mineral Resources and Ore Reserves' (the JORC Code).

Mr Derek Waterfield consents to the inclusion in this presentation of the matters that relate to exploration results in the form and context in which it appears.

ABOUT LEGEND

- ❖ ASX listed exploration company
- ❖ Market capitalisation ~\$18.3M (2B shares @ 0.9c)
- ❖ Cash and liquids ~\$8.5M as at 30 June 2016 (+\$3M @ 4% December 2016)
- ❖ Fraser Range – Rockford Project



Chairman
Michael Atkins



Managing Director
Mark Wilson



Exec. Director - Technical
Derek Waterfield

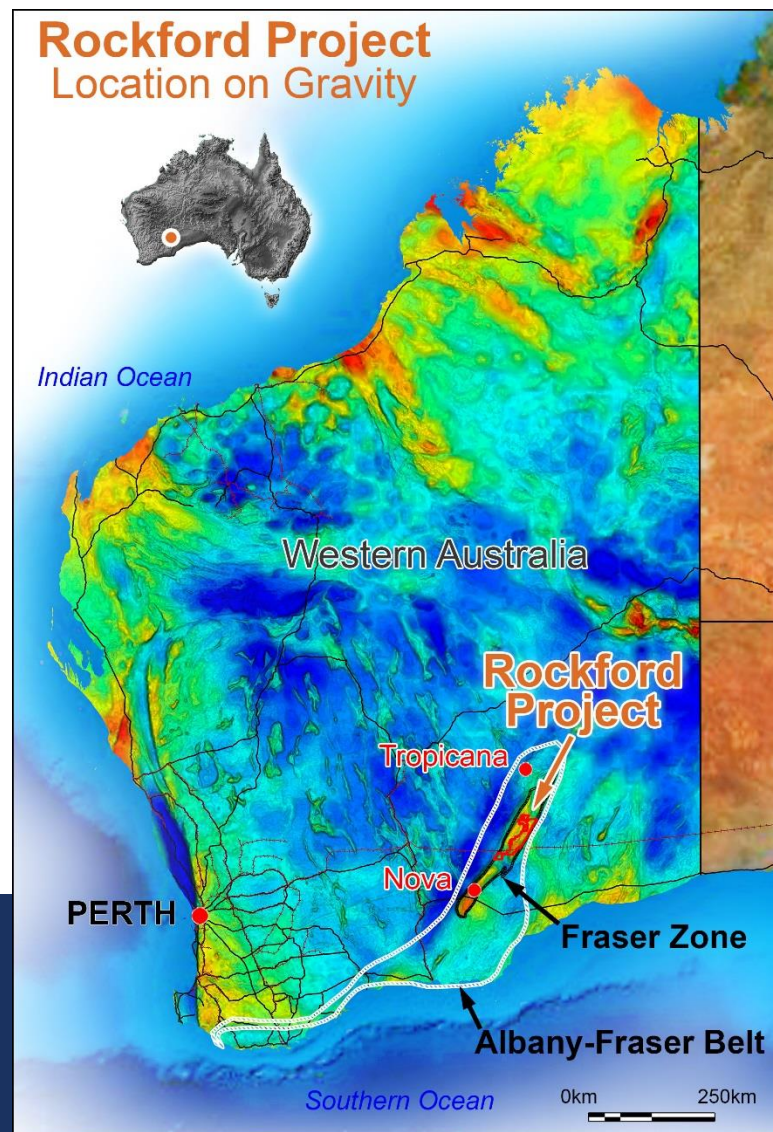


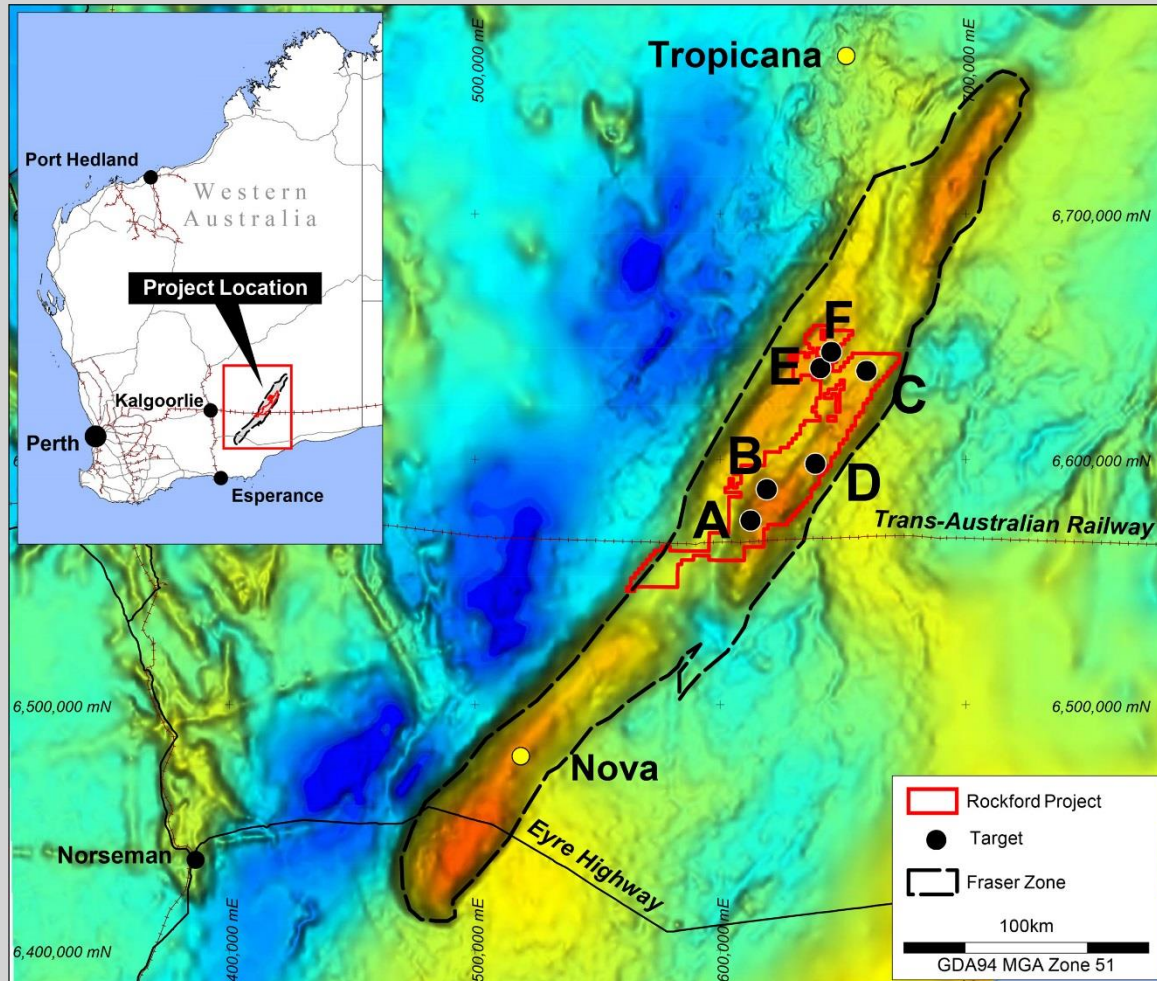
Company Secretary
Dennis Wilkins

- Located in northern Fraser Range district
- Acquisition date – 09/2015
- 120km NE of Nova
100km S of Tropicana
- 100% within Fraser Zone
(18% of total area)
- Infrastructure access

Project potential for

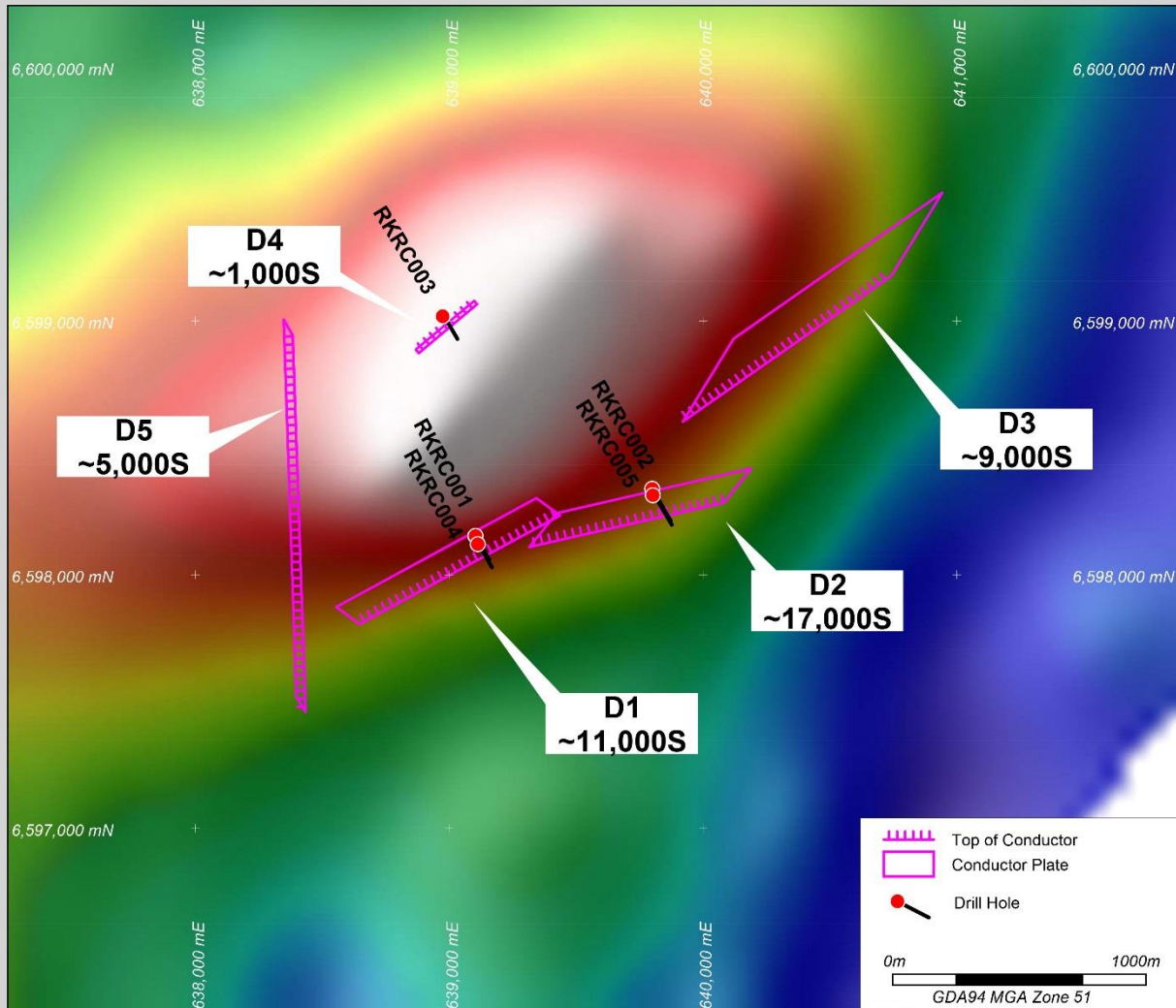
- Nova style Nickel-Copper
- Tropicana style Gold





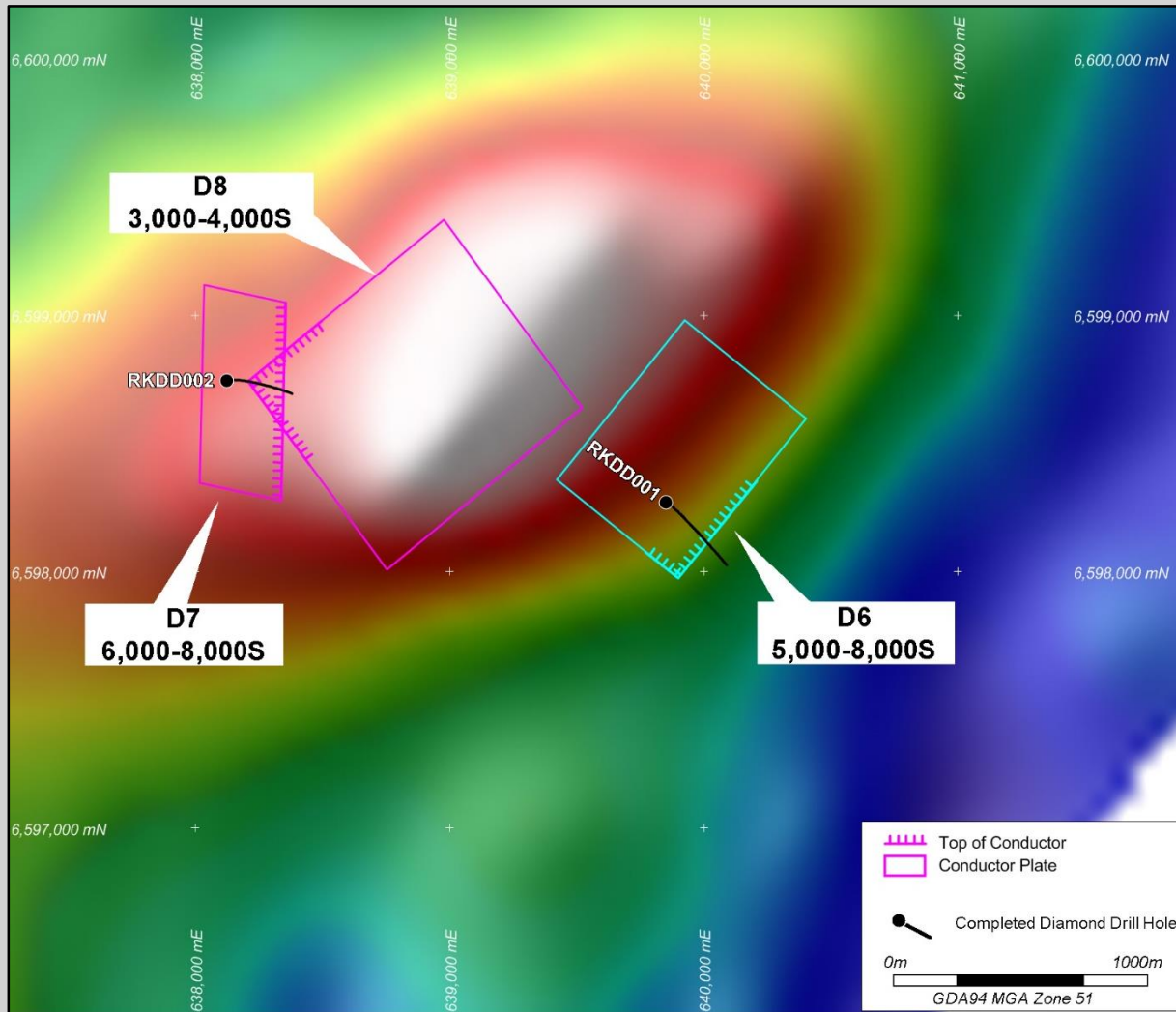
Systematic Strategy

- Six target areas tested with MLTEM surveys
- Seven conductors identified
5 at Area D / 1 at Area E / 1 at Area F
- Five RC drillholes for 1,160m completed at Area D
- FLTEM and DHTM surveys completed at Area D
- Two diamond drillholes for 1,301m completed at Area D



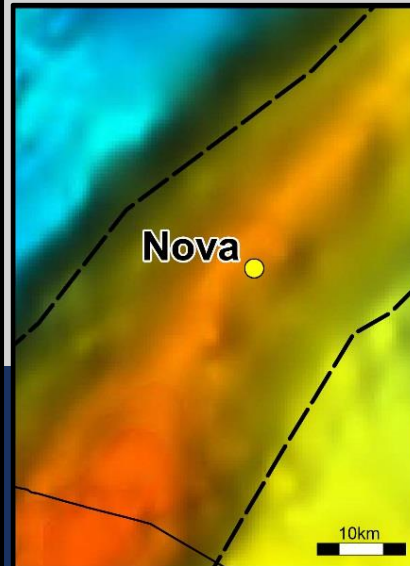
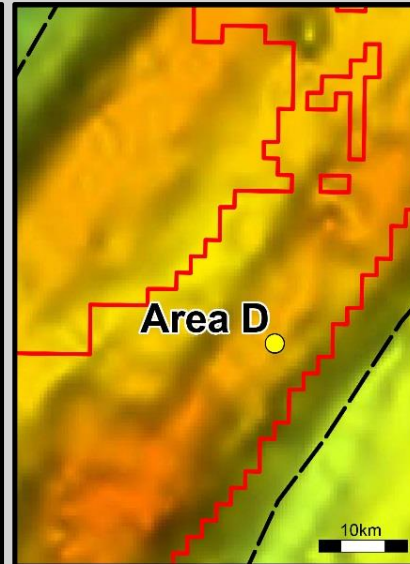
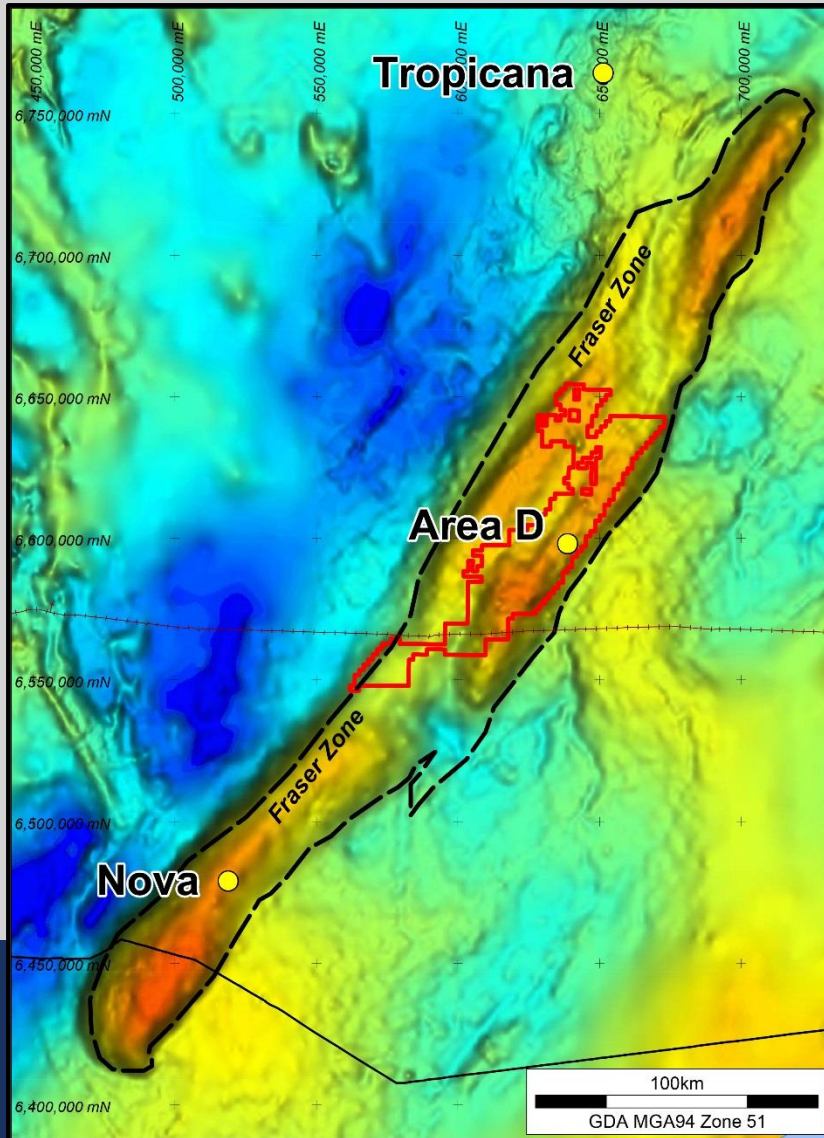
AREA D

- Five conductors identified associated with gravity feature
- RC drillholes tested conductors D1, D2 & D4
- D1 explained – 22m graphite schist from 174m
- D4 explained – DHTeM and assays
- FLTEM at D2 and D5



AREA D

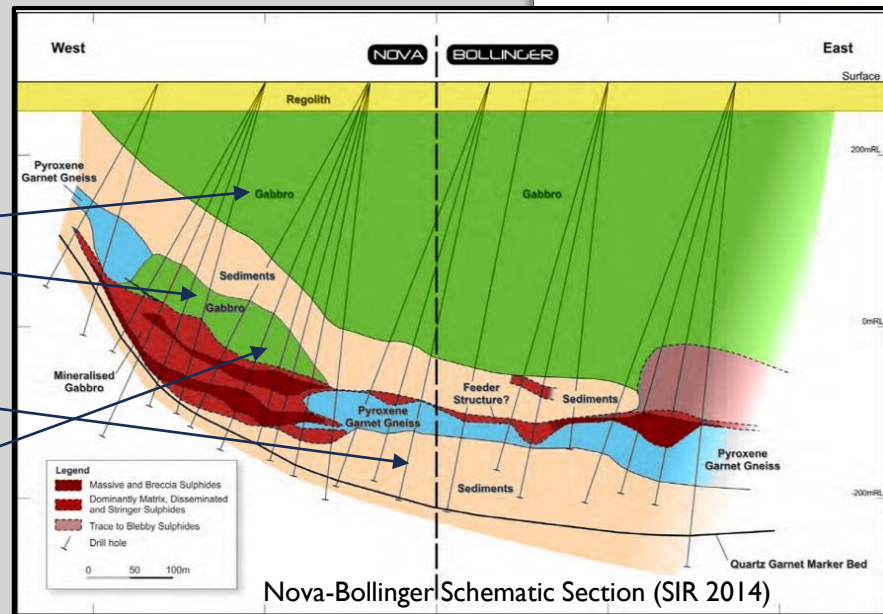
- Three new conductors (D6, D7 & D8)
- Two diamond drillholes tested conductors
- Drillholes intersected
 - Cumulate gabbro with disseminated sulphides
 - Pyrrhotite (Fe) with minor pentlandite (Ni) and chalcopyrite (Cu)
- Core for geology



- Fraser Zone defined by major gravity “ridge”
- Represents increased density due mafic and ultramafic intrusives: Host rocks for Ni-Cu mineralisation
- Several “hot spots” within gravity ridge
- Nova and Area D both lie on the northern margin of a gravity “hot spot”

Legend Drillhole RKDD002 Similarities to Nova

- Upper & lower gabbro units
- Sulphidic metasediment and granulite sequence (sulphur source)
- Gabbro with cumulate texture containing disseminated pyrrhotite and minor pentlandite-chalcopyrite (“the right rock type”)



RKDD002 – Simplified Drill Log Summary

Interval	Description
0 – 80.6m	Regolith
80.6 – 207.0m	Gabbro
207.0 – 603.5m	Mafic-Felsic Granulite / Metasediment
459.3-472.9m	Sulphidic interval
503.0-514.4m	Sulphidic interval
526.4-583.9m	Sulphidic interval
603.5 – 690.6m	Gabbro
626.3-626.8m	Sulphidic interval
661.0-661.35m	Sulphidic interval
690.6 – 717.7m	Mafic Granulite / Metasediment



- Stringer/disseminated pyrrhotite with minor chalcopyrite in mafic granulite/metasediment
- Potential source of sulphur
 - RKDD001: 566.8m



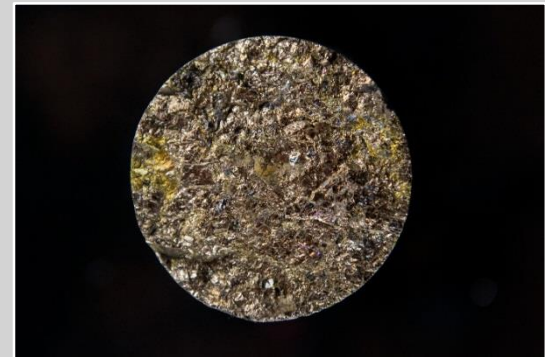
- Stringer/disseminated pyrrhotite with pentlandite in mafic granulite/metasediment
- Unit lies between upper and lower gabbro
 - Potential source of sulphur
 - RKDD002: 508.5m



- Disseminated pyrrhotite with trace pentlandite and chalcopyrite in cumulate textured gabbro
- Favourable host rock for Ni-Cu mineralisation
 - RKDD002: 626.5m

FUTURE PROGRAMMES

- Full review of Area D exploration results, incorporating drilling, EM, gravity and aeromagnetic data: Integration with existing datasets
- Infill gravity survey to assist target selection
- Regional MLTEM surveys and regional aircore drilling ~5,000m



THANK YOU

