



LEGEND – A WELL FUNDED ACTIVE NICKEL EXPLORER

20 October 2016

Australian Nickel Conference

ASX:LEG

DISCLOSURE



This is not a disclosure document. Any material used in this presentation is a summary of selected data, and any investor in Legend Mining Limited should refer to all Legend Mining Limited ASX releases and statutory reports before considering to invest in the company.

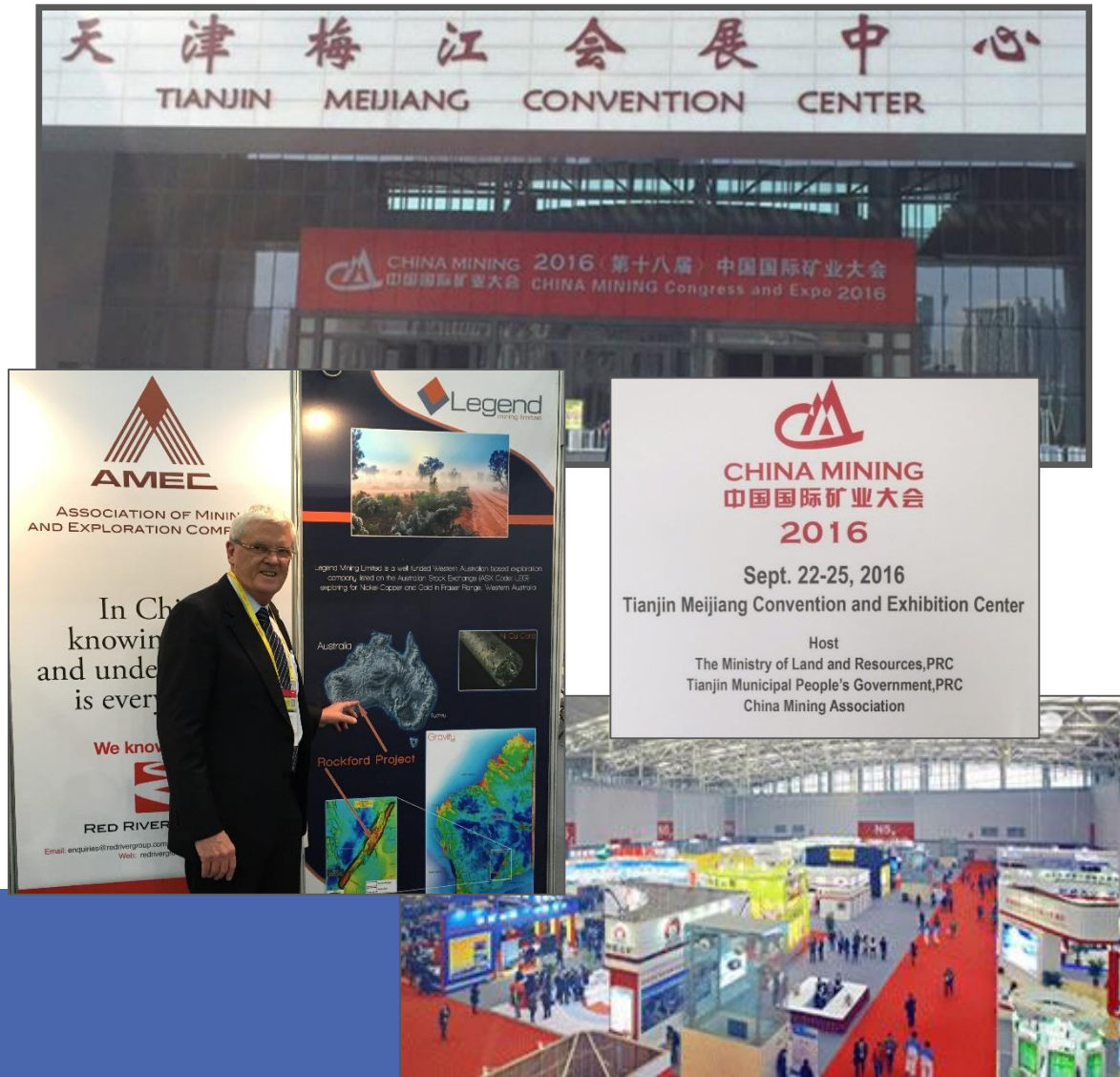
Any forward looking information in this presentation has been prepared on the basis of a number of assumptions that may prove not to be correct. Neither Legend Mining Limited, nor its officers, employees and advisors make or give any representation, warranty or guarantee in relation to this presentation.

Legend Mining Limited reserves the right to update, amend or supplement the Information in this presentation at any time in its absolute discretion without incurring any obligation to do so.

The information in this presentation that relates to exploration results is based on information compiled by Mr Derek Waterfield who is a member of the Australian Institute of Geoscientists and is a full time employee of Legend Mining Limited.

Mr Derek Waterfield has sufficient experience which is relevant to the style of mineralisation and type of deposit under consideration and to the activity which he is undertaking to qualify as a Competent Person as defined in the 2012 Edition of the 'Australasian Code for Reporting of Exploration Results, Mineral Resources and Ore Reserves' (the JORC Code).

Mr Derek Waterfield consents to the inclusion in this presentation of the matters that relate to exploration results in the form and context in which it appears.

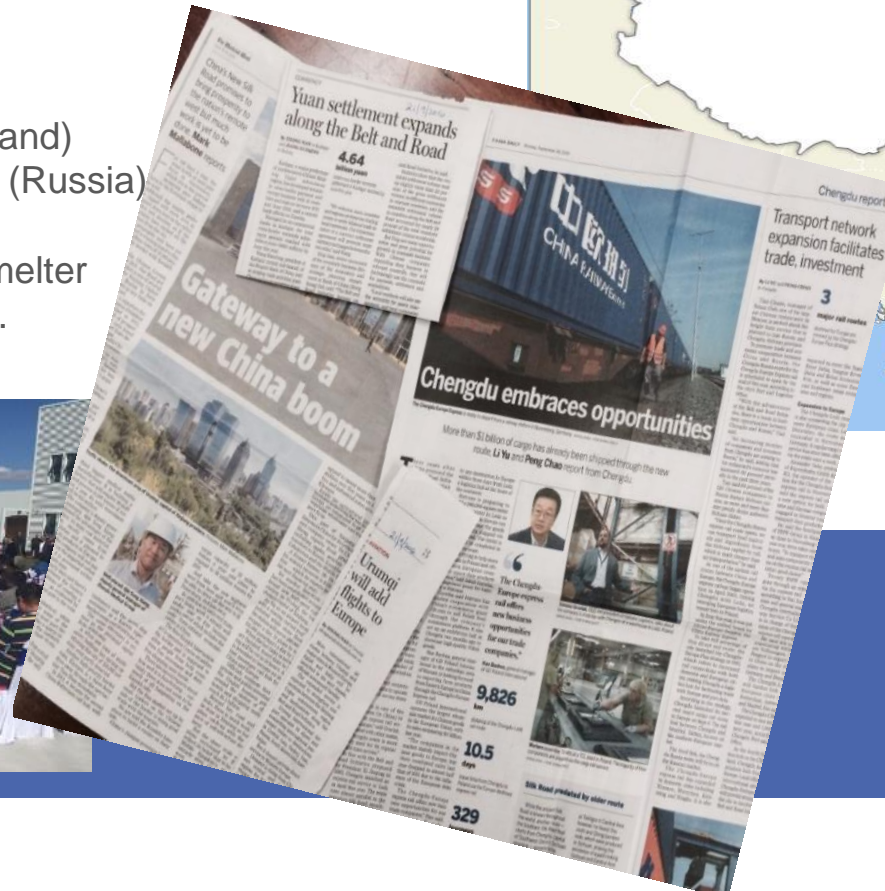
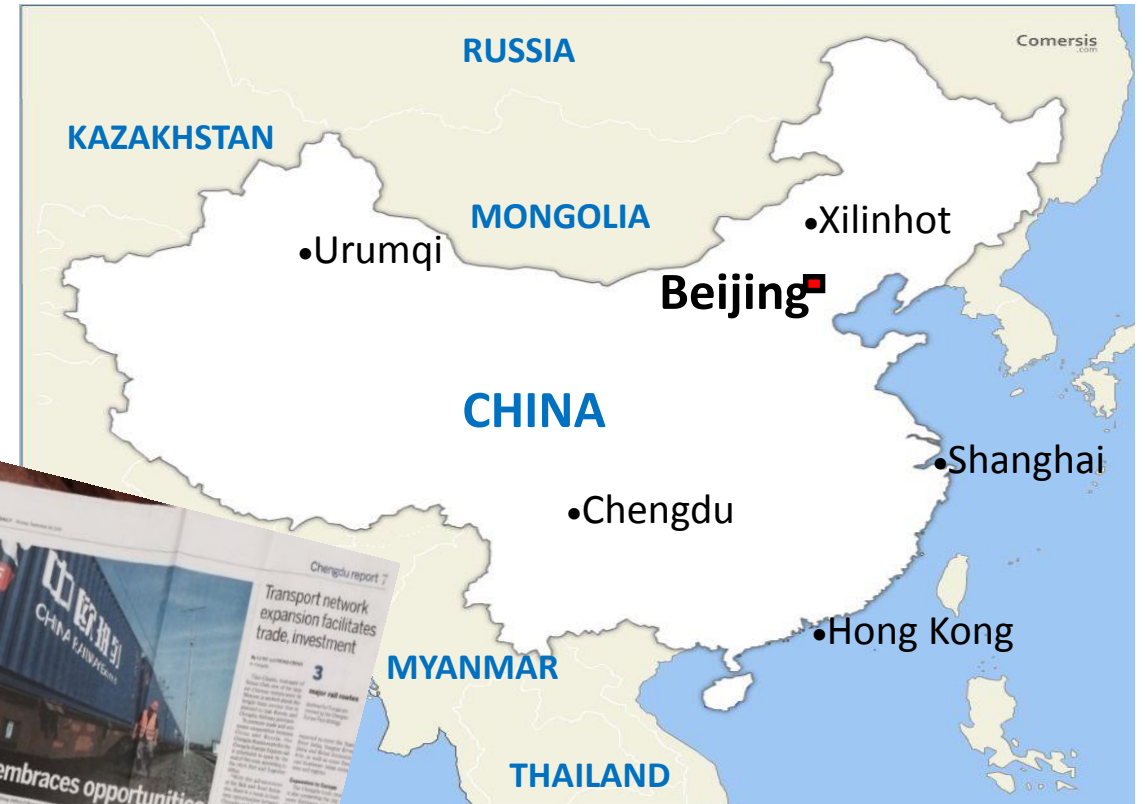


- Key takeaways
 - Innovate to deal with new normal (single digit growth/little demand impetus)
 - Sluggish growth world wide
 - Supply side restructure to survive
 - China in deep structural transition (Baosteel/Wuhan merger)
- Belt Road initiative

CHINA

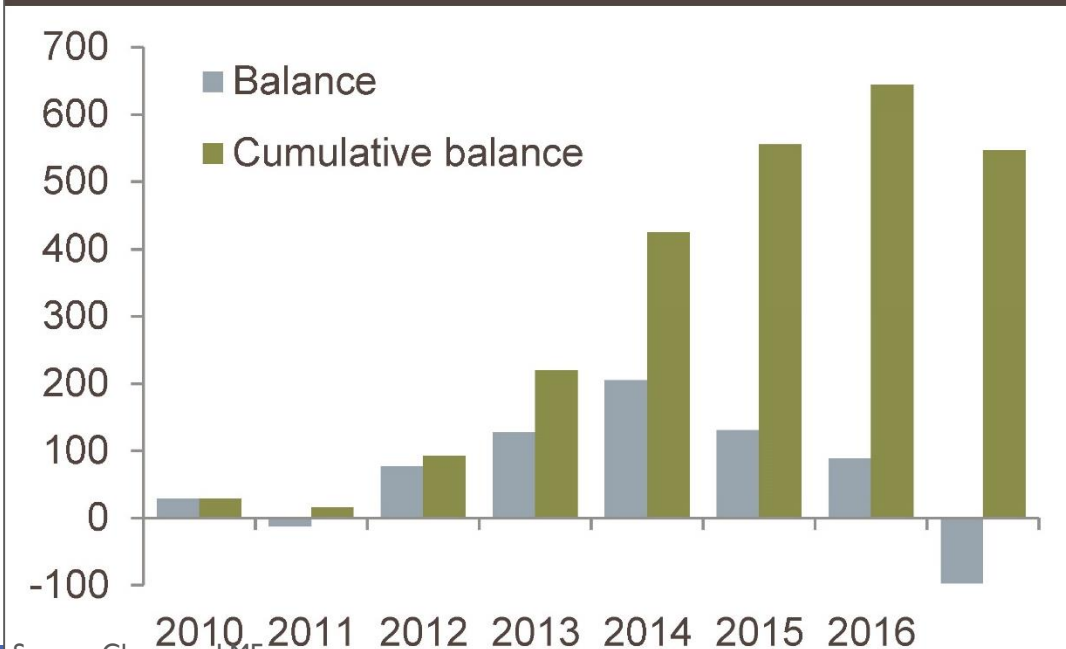
- **Euphemism for Infrastructure to Facilitate Trade-Access to Commodities**

- **Xilinhote** (inner Mongolia) - Grand Farm Meat Facility
 - JV with V&V Walsh opened September 2016 (10,000 lambs and 1,000 cattle per day)
- **Urumqi** – Airport expansion 40M passenger per year. Hong Kong/Sydney size.
- **Chengdu** – Rail Expansion
 - 4 trains per week to Lodz (Poland)
 - 20 trains per week to Moscow (Russia)
- **Tsinghsan** – World Class Nickel smelter in Indonesia with adjoining SS plant. 30ktpa to 150ktpa



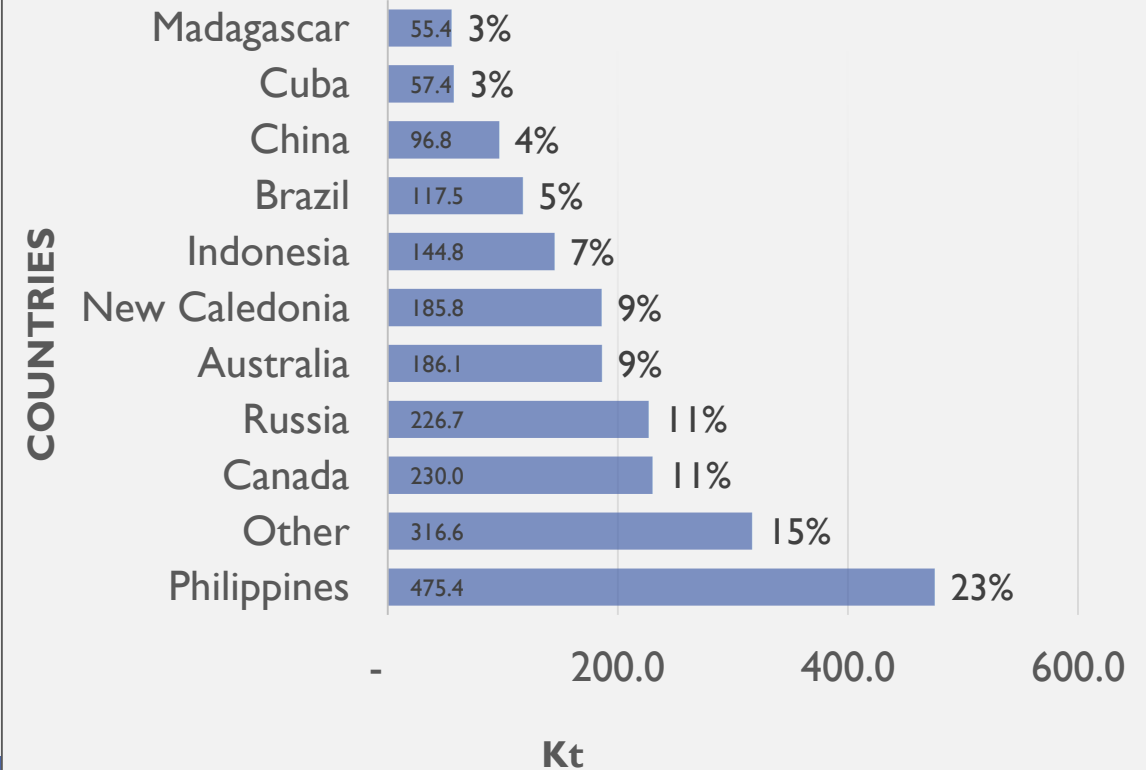
- Fundamental change from surplus to deficit

2010 – 2016 Market balance (kt Ni)



Source: Glencore, LME

WORLD NICKEL SUPPLY 2015



Source: ANZ Research

“The medium term/long term outlook is much more positive fundamentally and we believe it is only a matter of time before markets recognise this and price accordingly.” – Glencore 2016

WORLD

ABOUT LEGEND



- ASX listed exploration company
- Market capitalisation ~\$20.3M (2B shares @ 1.0c)
- Cash and liquids ~\$11.2M as at 30 September 2016 (includes \$3M receivable December 2016)
- Fraser Range – Rockford Project



Chairman
Michael Atkins



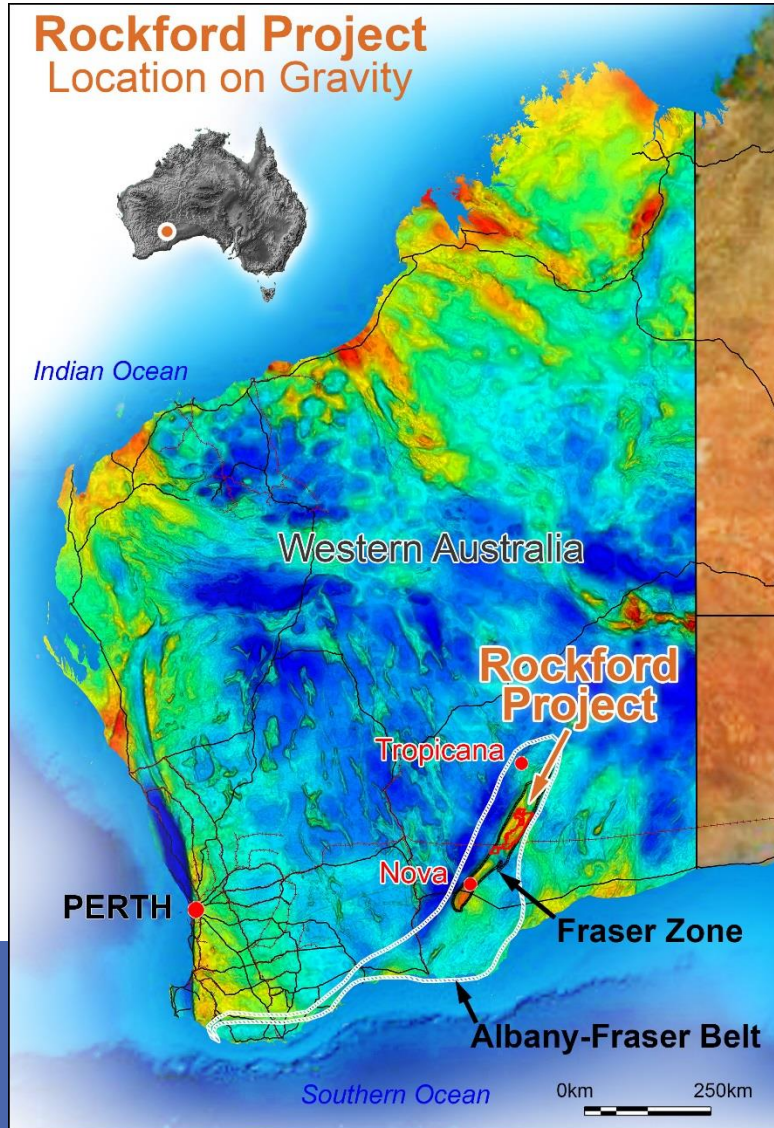
Managing Director
Mark Wilson



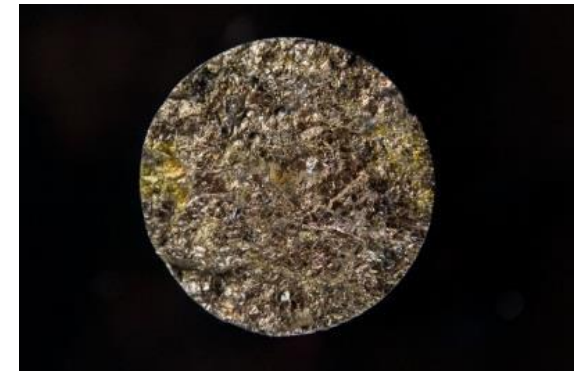
Exec. Director - Technical
Derek Waterfield

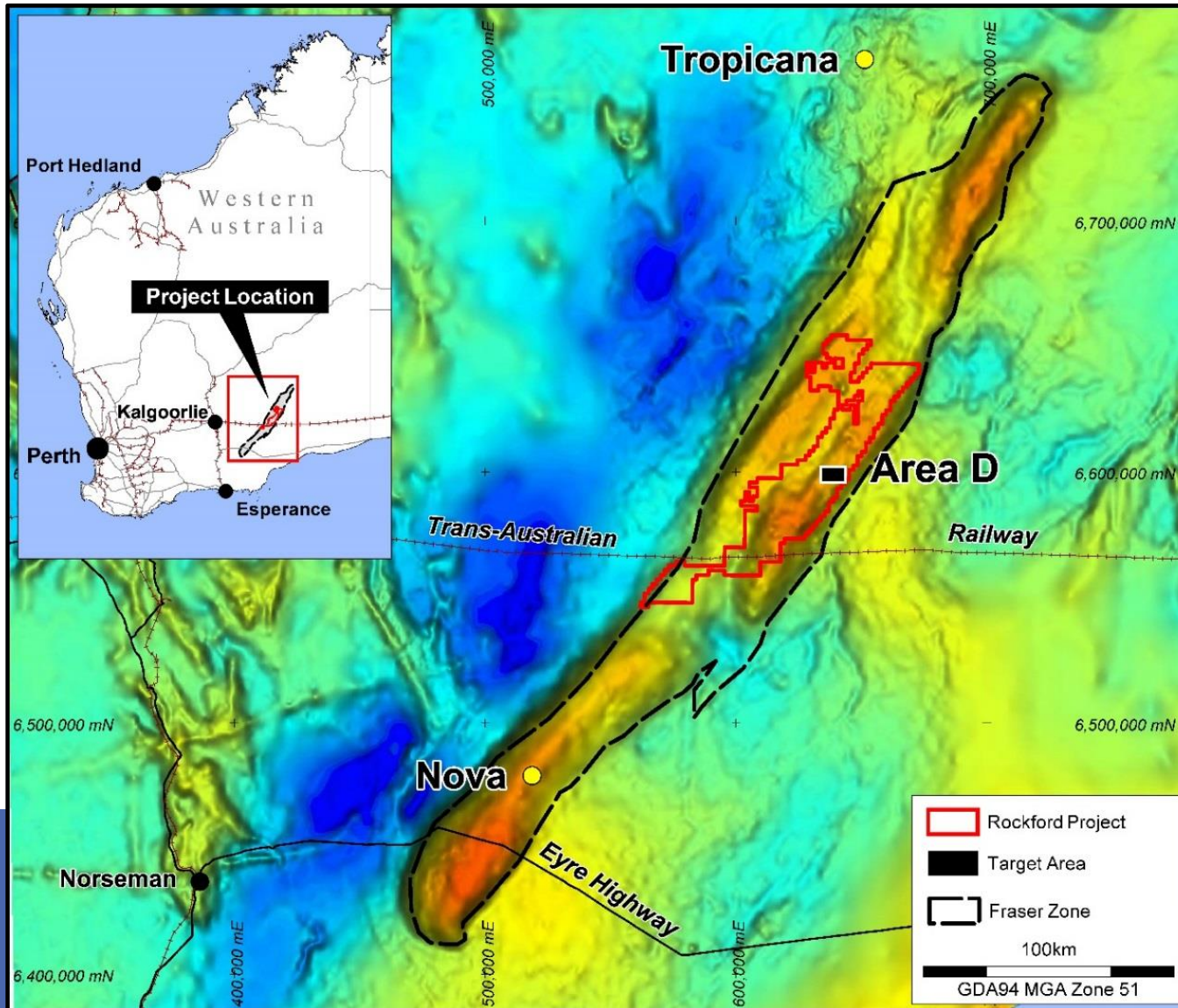


Company Secretary
Dennis Wilkins



- Located in northern Fraser Range district
- Acquisition date – 09/2015
- 70/30 JV with Creasy Group
- 120km NE of Nova
100km S of Tropicana
- 100% within Fraser Zone
(16% of total area)
- Infrastructure access
- **Project potential for**
 - Nova style Nickel-Copper
 - Tropicana style Gold





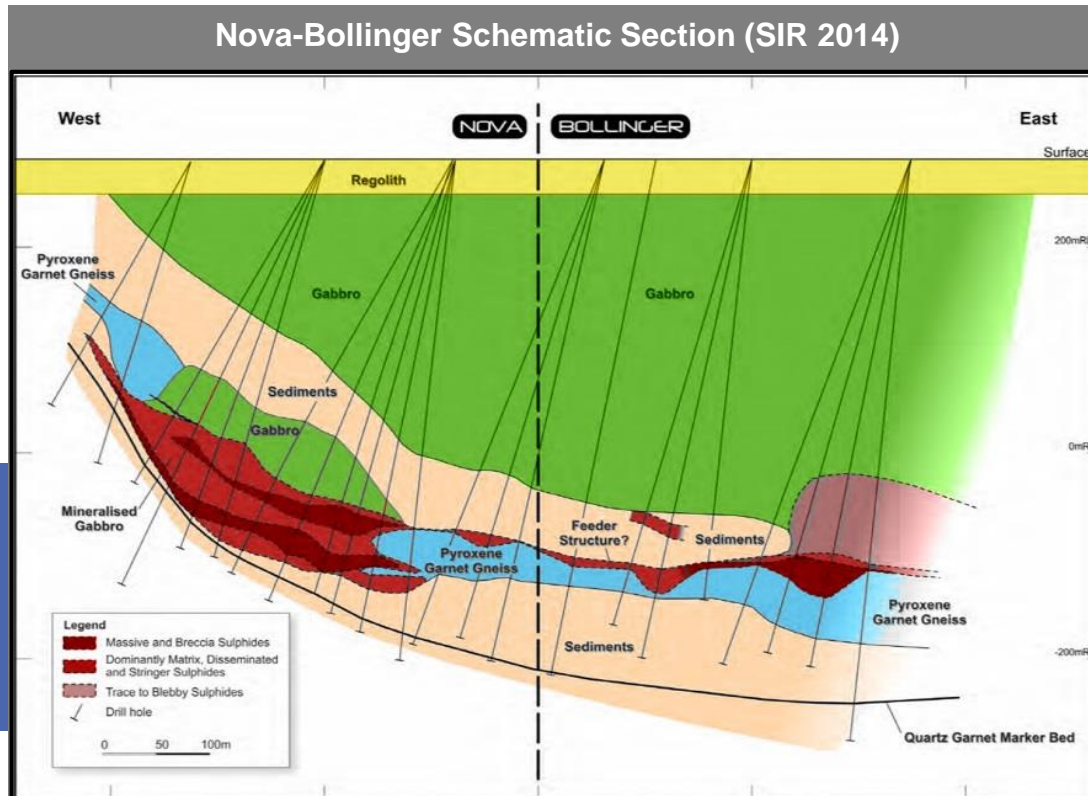
Systematic Strategy

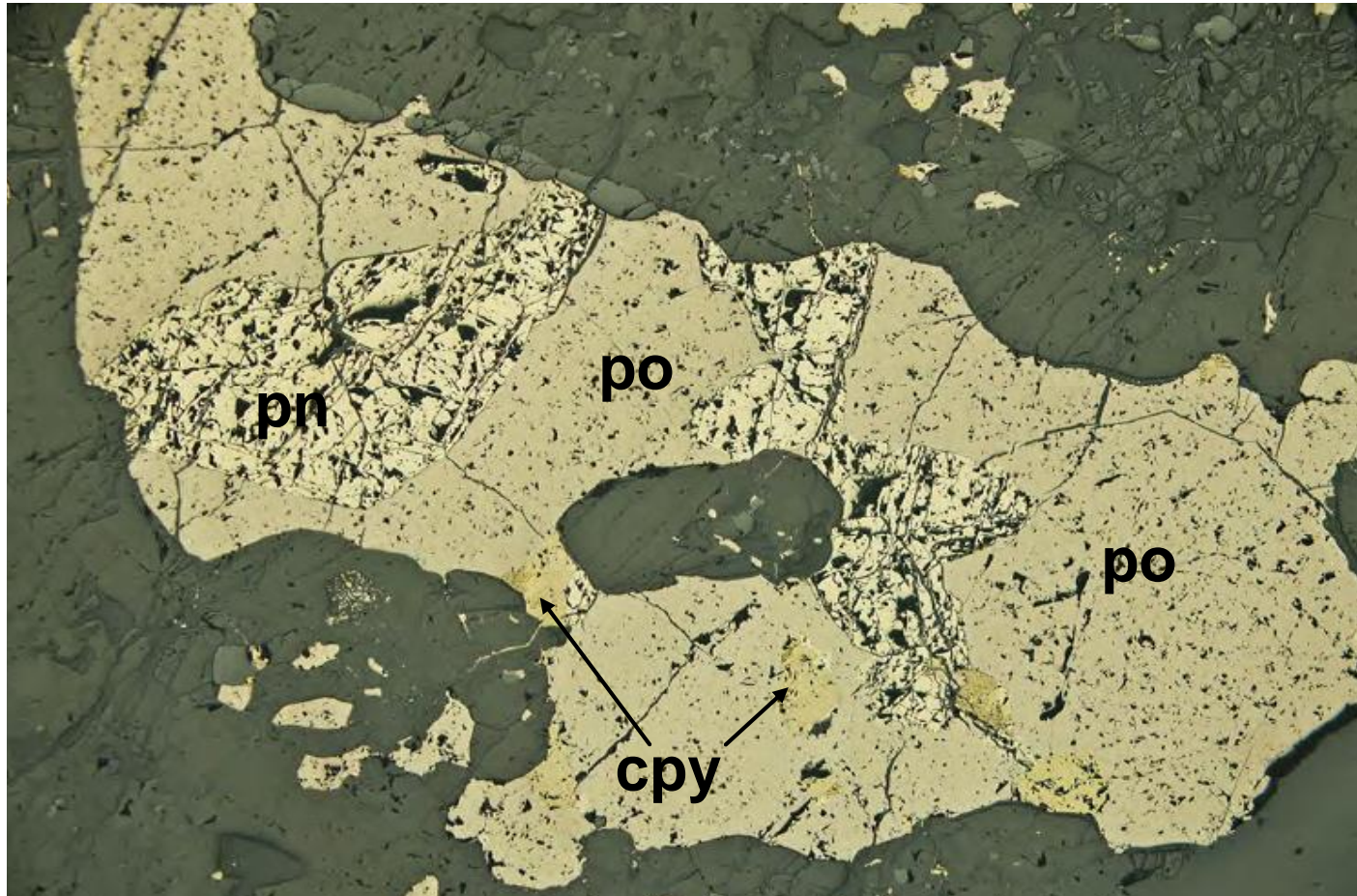
- Target selection - detailed aeromagnetics and gravity
- MLTEM, FLTEM & DHTM surveys
- Five RC drillholes for 1,160m completed at Area D
- Two diamond drillholes for 1,301m completed at Area D

- Upper & lower gabbro units
- Sulphidic metasediment/granulite (“sulphur source”)
- Ultramafic with cumulate texture containing disseminated pyrrhotite and minor pentlandite-chalcopyrite
(*“The right host rock”*)

Legend’s RKDD002 – Simplified Drill Log Summary

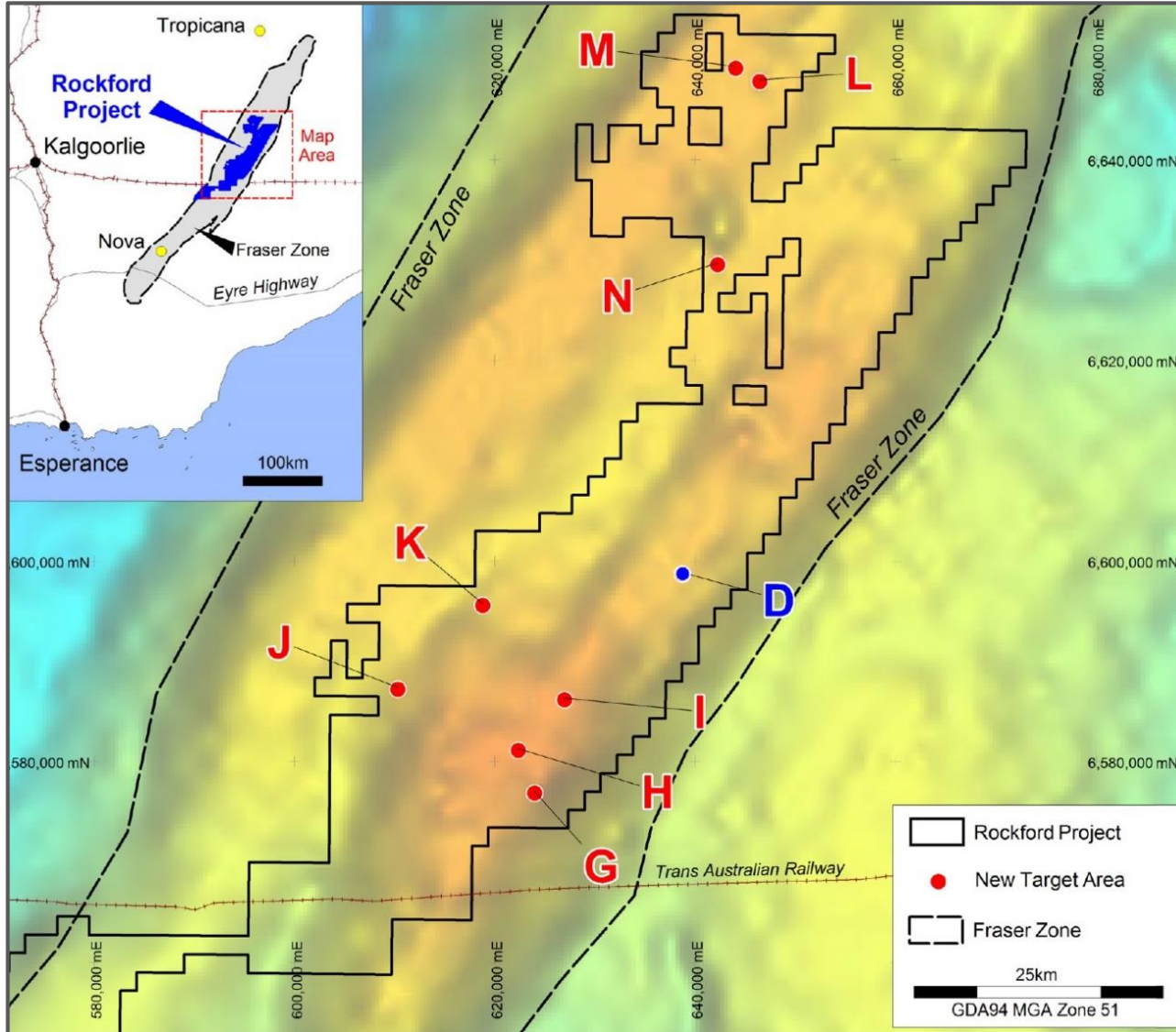
Interval	Description
0 – 80.6m	Regolith
80.6 – 207.0m	Gabbro
207.0 – 603.5m	Mafic-Felsic Granulite / Metasediment
459.3-472.9m	Sulphidic interval
503.0-514.4m	Sulphidic interval
526.4-583.9m	Sulphidic interval
603.5 – 690.6m	Gabbro
626.3-626.8m	Sulphidic interval
661.0-661.35m	Sulphidic interval
690.6 – 717.7m	Mafic Granulite / Metasediment





Meta-ultramafic with pyrrhotite (pale brownish cream), pentlandite (cream pitted) and chalcopyrite (small yellow grains). Reflected plane polarised light – RKDD002 626.6m

- Results from two deep diamond holes
 - Sulphide rich country rocks, “sulphur source”
 - Anomalous nickel (0.17%) copper (0.09%) assay results
- Pentlandite-chalcopyrite in cumulate ultramafic, (*“The right host rock”*)

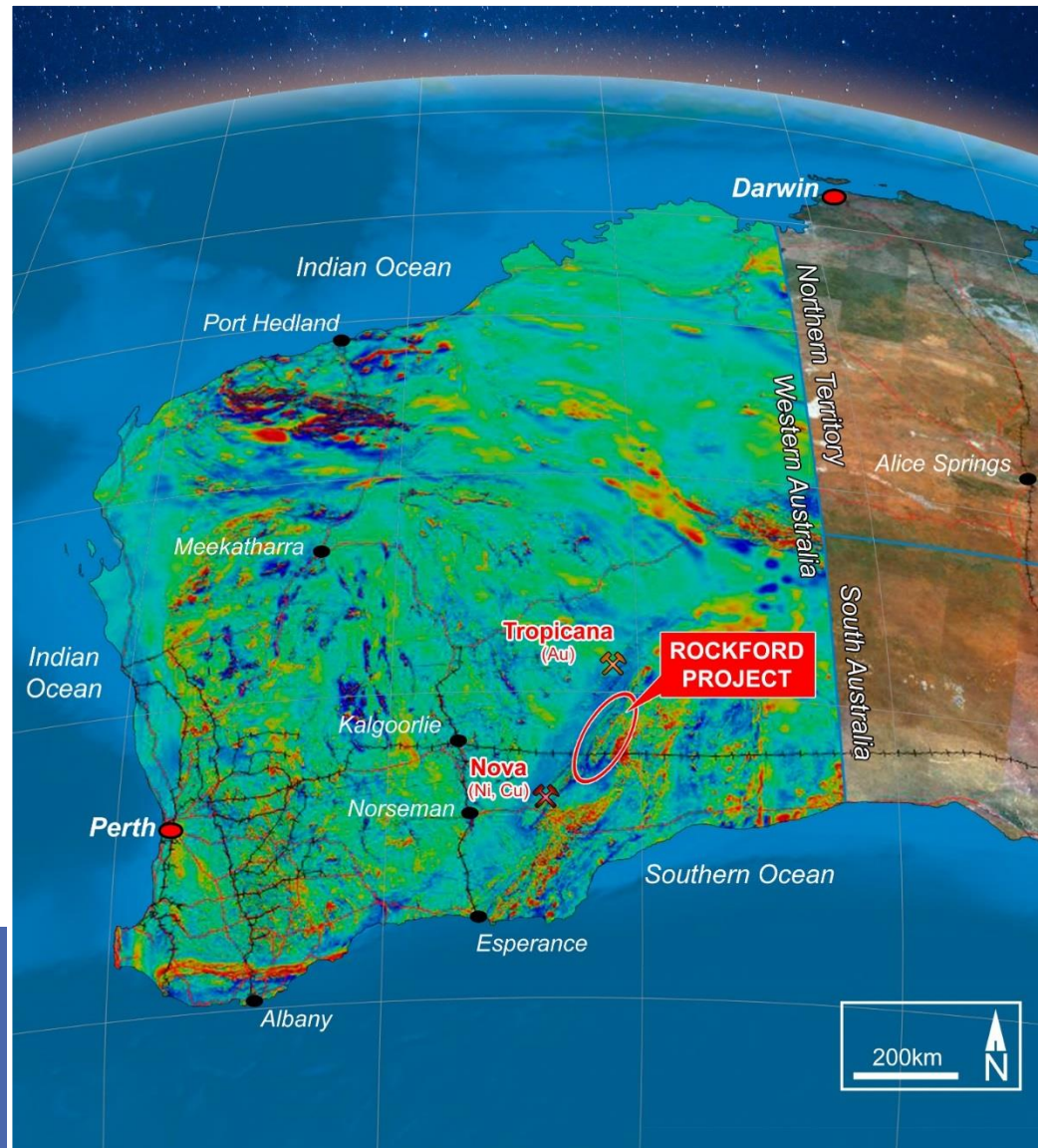


- Regional high powered MLTEM surveys
- EM system has ability to detect conductors +500m, as evidenced by intersected conductors at Area D
- Broad line spacing, slingram configuration
- Ability to test on regional scale





- 80 holes for ~5,000m
- Testing eight areas
- Regolith profile – cover depth
- Basement lithologies
- Lithogeochemical signature of basement rocks



- Highly Prospective Rockford Project
- Recent M&A Activity
- Well Funded
- Experienced Team
- Grow Shareholder Value





THANK YOU

ASX:LEG