



*Going the Distance in the Fraser Range*



## DISCLOSURE



This is not a disclosure document. Any material used in this presentation is a summary of selected data, and any investor in Legend Mining Limited should refer to all Legend Mining Limited ASX releases and statutory reports before considering to invest in the company.

Any forward looking information in this presentation has been prepared on the basis of a number of assumptions that may prove not to be correct. Neither Legend Mining Limited, nor its officers, employees and advisors make or give any representation, warranty or guarantee in relation to this presentation.

Legend Mining Limited reserves the right to update, amend or supplement the Information in this presentation at any time in its absolute discretion without incurring any obligation to do so.

The information in this presentation that relates to exploration results is based on information compiled by Mr Derek Waterfield who is a member of the Australian Institute of Geoscientists and is a full time employee of Legend Mining Limited.

Mr Derek Waterfield has sufficient experience which is relevant to the style of mineralisation and type of deposit under consideration and to the activity which he is undertaking to qualify as a Competent Person as defined in the 2012 Edition of the “Australasian Code for Reporting of Exploration Results, Mineral Resources and Ore Reserves” (the JORC Code).

Mr Derek Waterfield consents to the inclusion in this presentation of the matters that relate to exploration results in the form and context in which it appears.

## **“Going the Distance in the Fraser Range”**

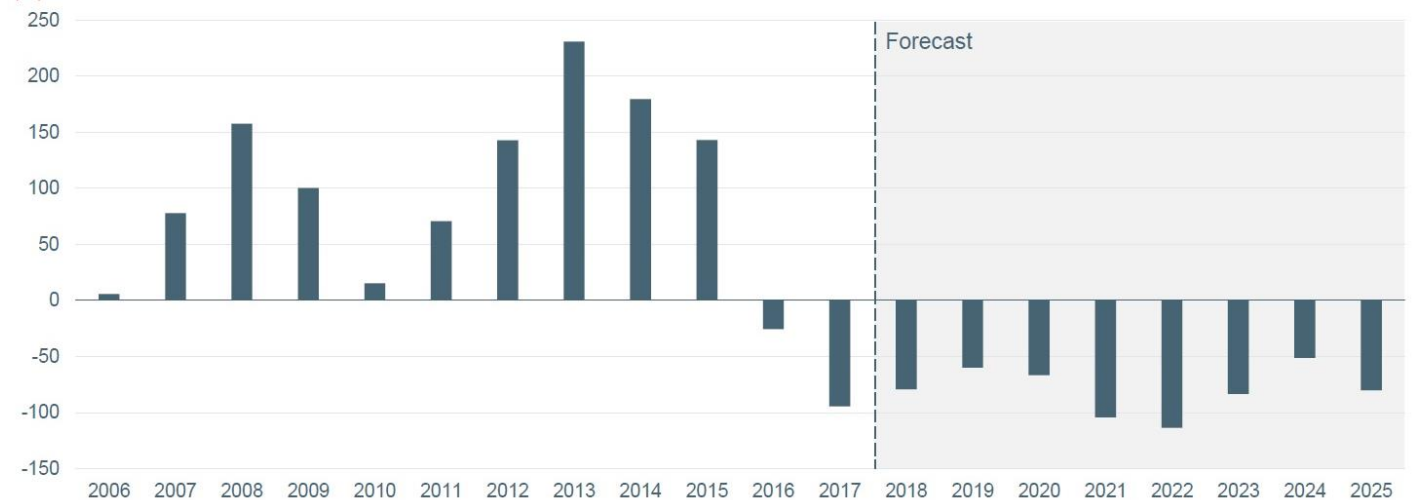
### **CONTENTS**

- 1. Nickel Market Commentary**
- 2. About Legend**
  - **Investment Case**
  - **Rockford Project Location**
  - **Rockford Project Activities**
- 3. Summary**

## 2015 – 2018 Global Balance

- Balance in deficit since 2016, predicted to continue
- Stockpiles diminishing from peak 900Kt (2015)\*
- Price increase from US\$3.80/lb to US\$6.30/lb (\$7.13 max 19/4/18)
- China and USA stainless steel demand robust
- Promising new electric vehicle battery demand

Refined Nickel Market Balance (kt)



Source: Wood Mackenzie, 2018Q1 Nickel forecast

Eduard Haegel: Asset President – Nickel West  
18 April 2018

7

BHP

*“Nickel deficit - stockpiles diminishing – price rising”*

\*Glencore Nov 2017

## ABOUT LEGEND



- ASX listed exploration company
- Market capitalisation ~\$68M (2B shares @ 3.4cps)
- Cash and liquids ~\$8.3M as at 31 March 2018 (includes \$3M receivable from Jindal)
- Fraser Range – Rockford Project



**Chairman**  
**Michael Atkins**



**Managing Director**  
**Mark Wilson**



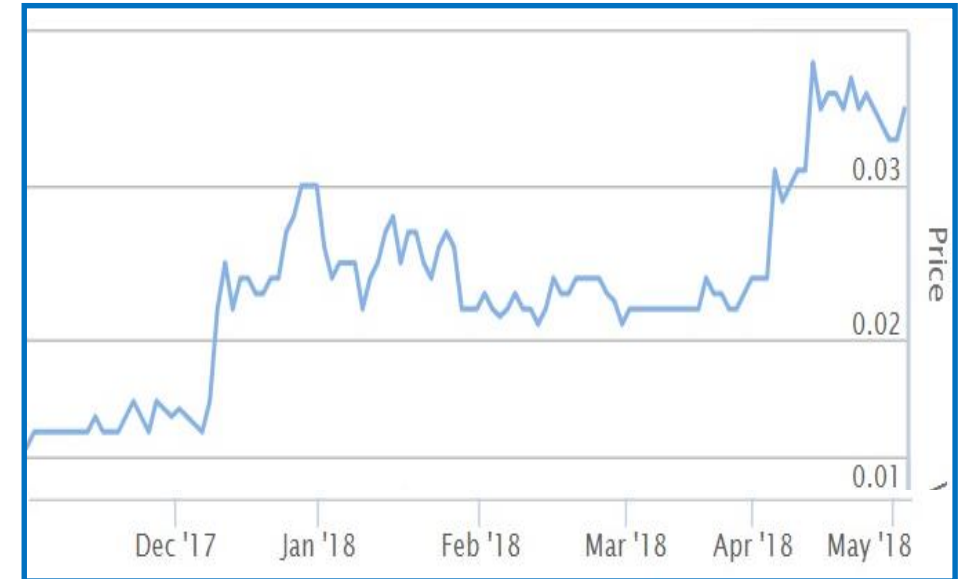
**Exec. Director - Technical**  
**Derek Waterfield**



**Company Secretary**  
**Tony Walsh**

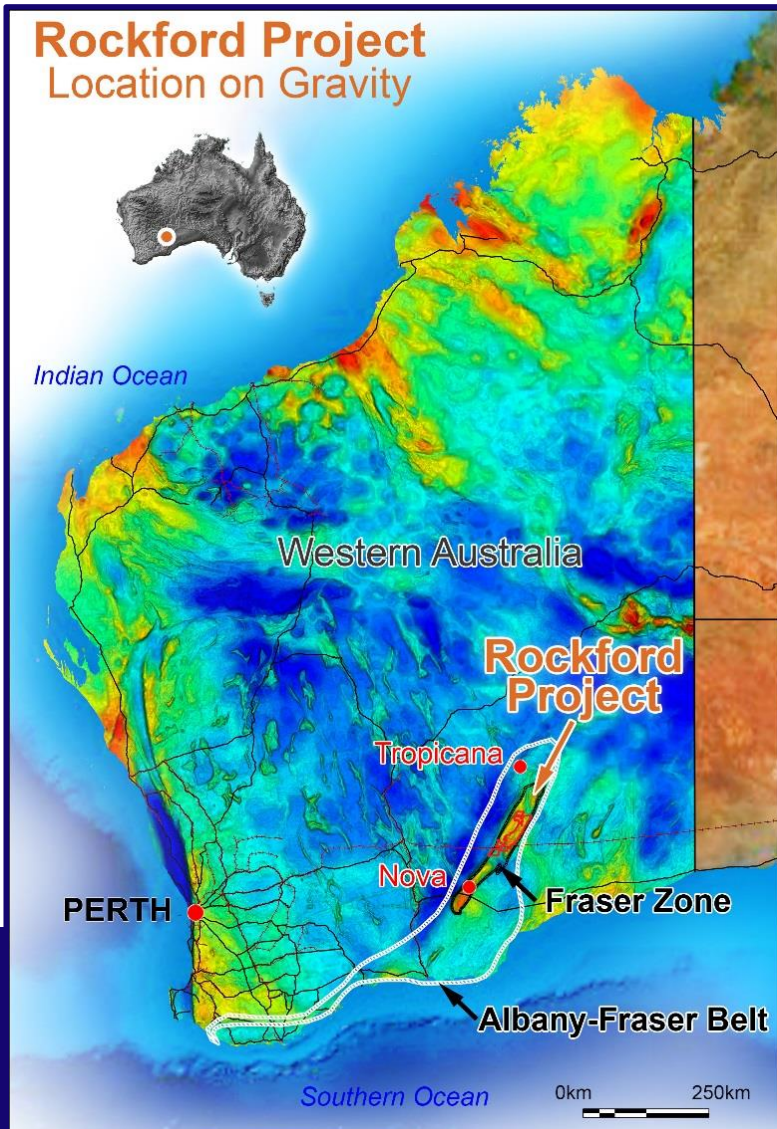
## Fundamentals

- Right People
  - ✓ Experienced corporate and technical team
  - ✓ Partner and major shareholder
    - Creasy Group (regional experience)
- Biggest block on best street (2,792 km<sup>2</sup> in Fraser Zone)
- Main Commodity – Nickel  
(stockpiles diminishing – price rising)
- Cashed up (several years exploration funds)
- Positive aircore drilling results (December 17 – April 18)
- 2018 Aircore drill programme ongoing



***Legend share price graph six months to May 2018***

*“Exploration success – price appreciation”*

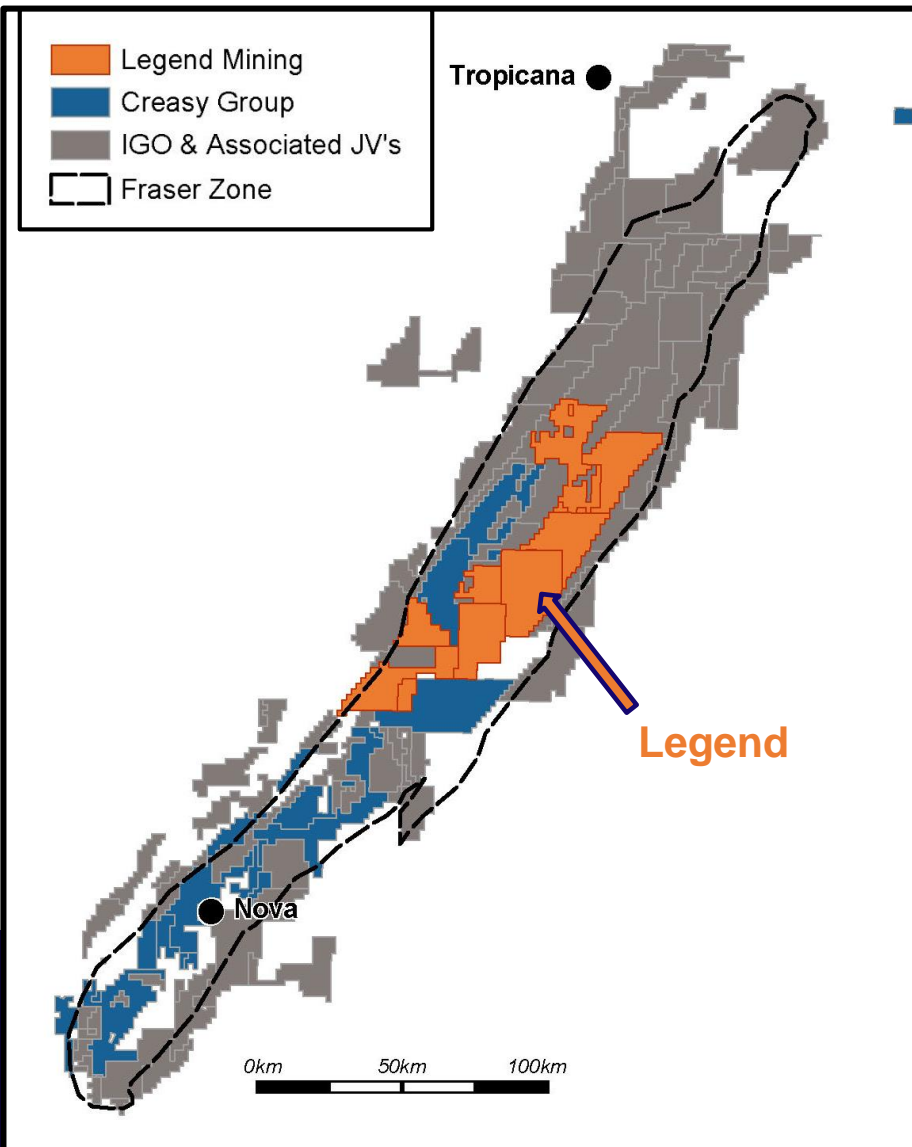


## Rockford Project

- Located in northern Fraser Range district
- 120km NE of Nova / 100km S of Tropicana
- 100% within Fraser Zone (18% of total area)
- Project potential for
  - Nova style Nickel-Copper
  - Tropicana style Gold
- Infrastructure access

*“Project potential for Nova style Nickel-Copper”*



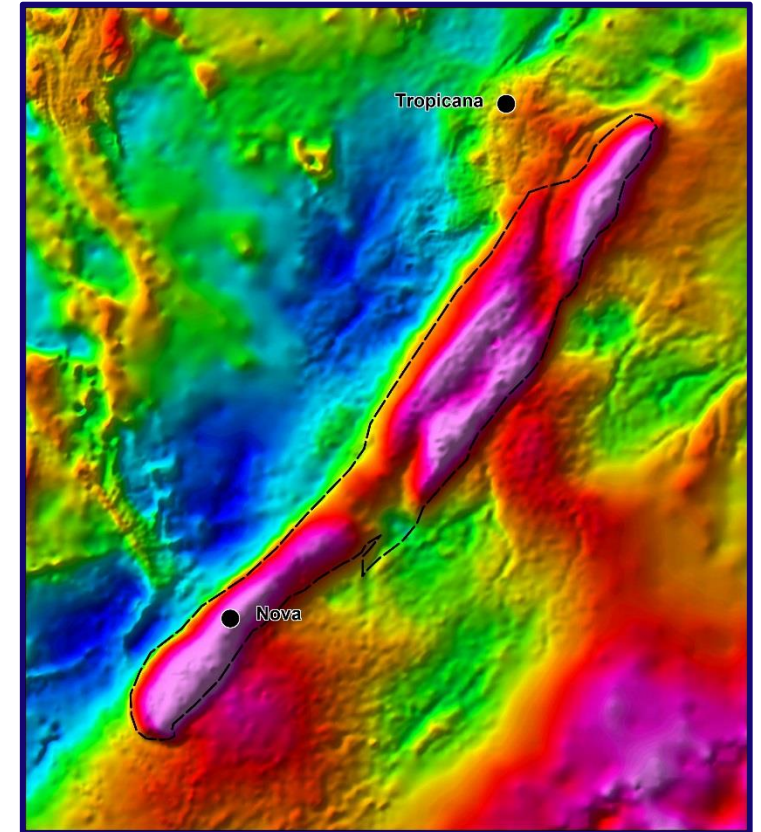


## Main Players

**Legend**  
*Active & Funded*

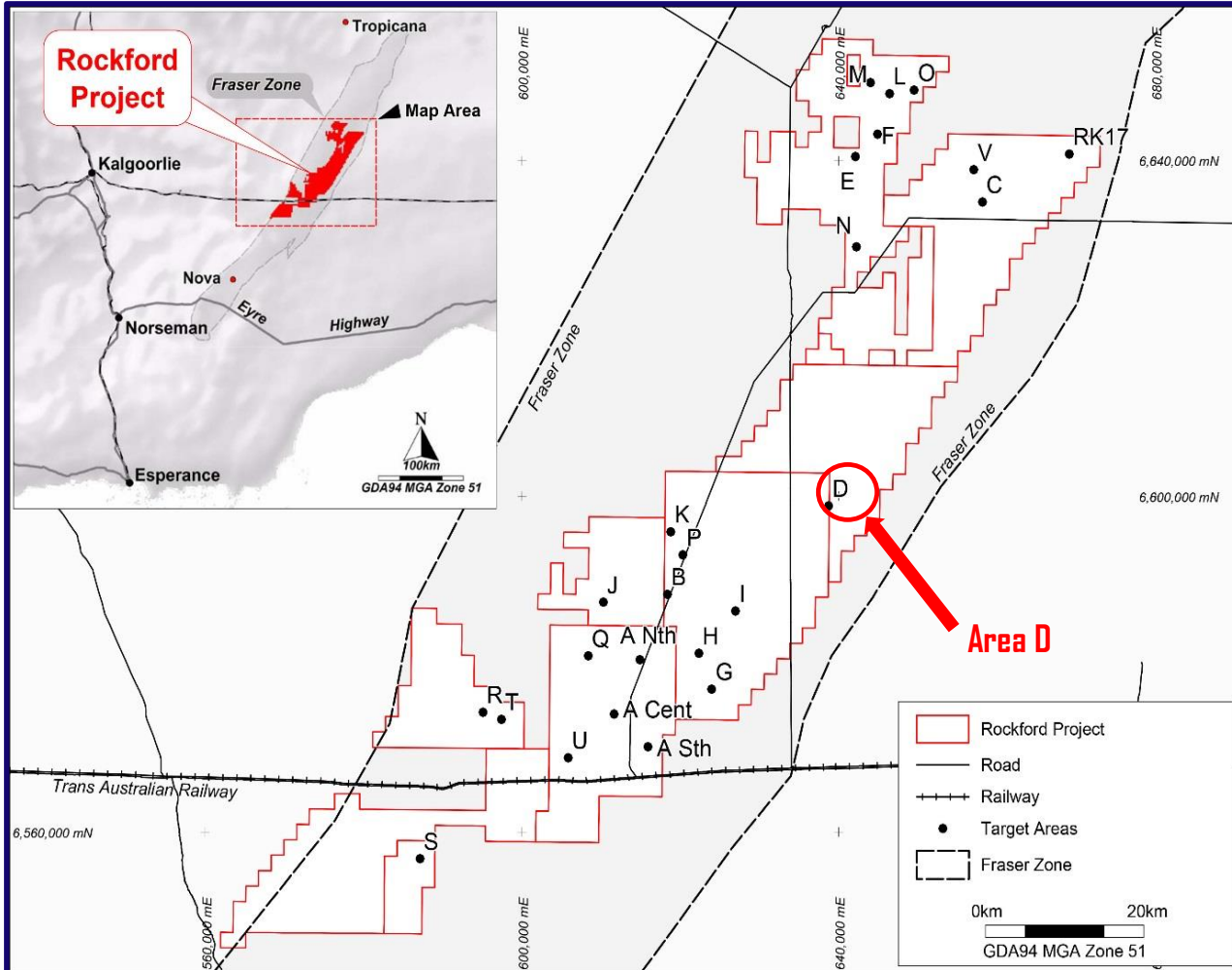
**Creasy Group**  
*Active & Private*

**Independence (“IGO”)**  
*Active & ~\$3B MC*



- ✓ *Leverage play is Legend*
- ✓ *M&A by mid-tiers bring back life to area*



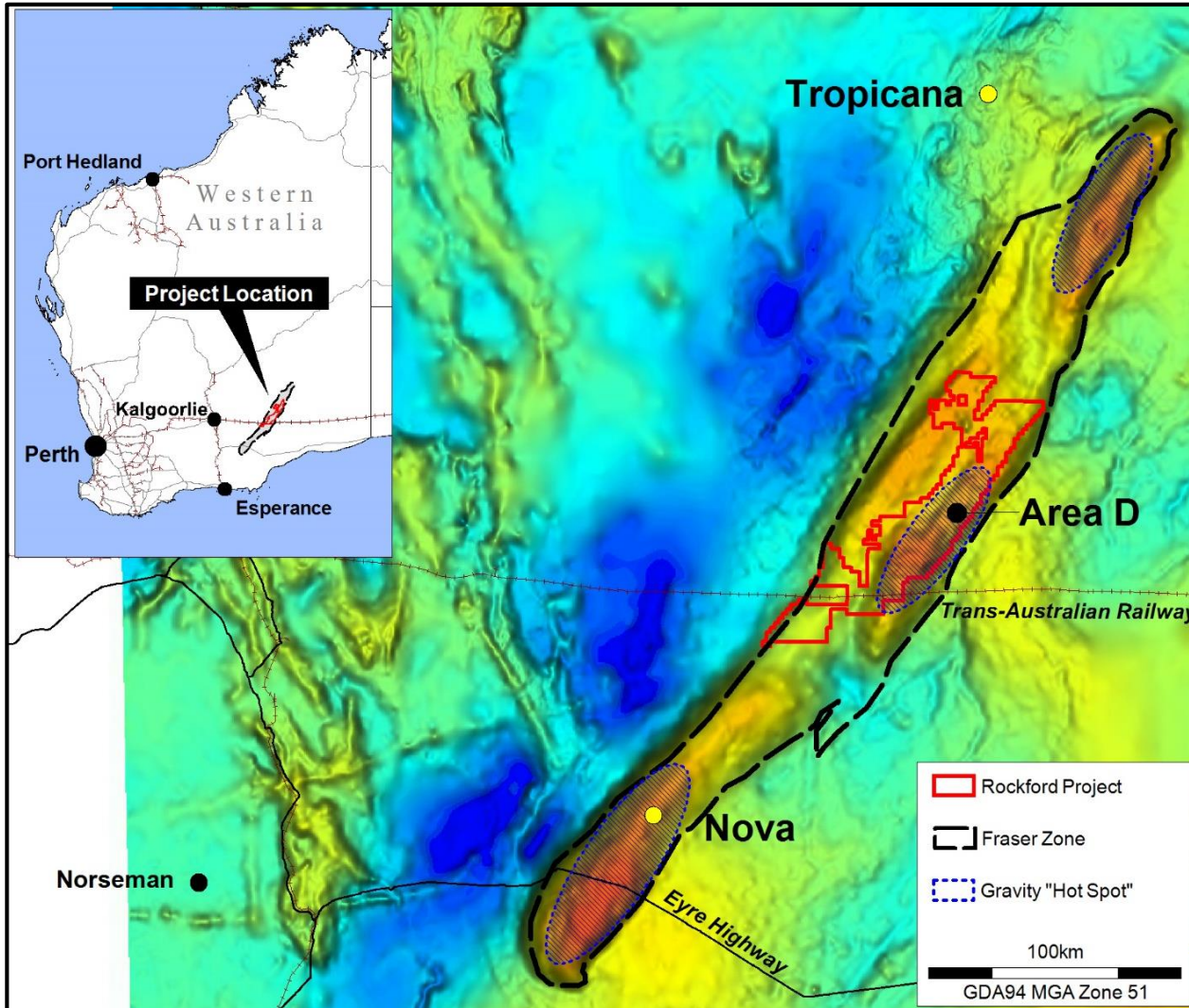


## Summary to Date

- 25 Areas selected from aeromag and gravity
- 21 conductors identified by innovative MLTEM
- Drilling: 4 diamond holes for 2,652m  
10 RC holes for 2,266m  
222 aircore holes for 15,382m
- Exploration spend Sep 15 to Mar 18 - \$8.2M  
(Tax refund \$2.4M)
- Area D aircore drilling success Nov 17 to Apr 18
- Still early days

*Area covered by MLTEM surveys -  $200\text{km}^2/2792\text{km}^2 = 7.2\%$  of Project area*

## AREA D – RIGHT LOCATION



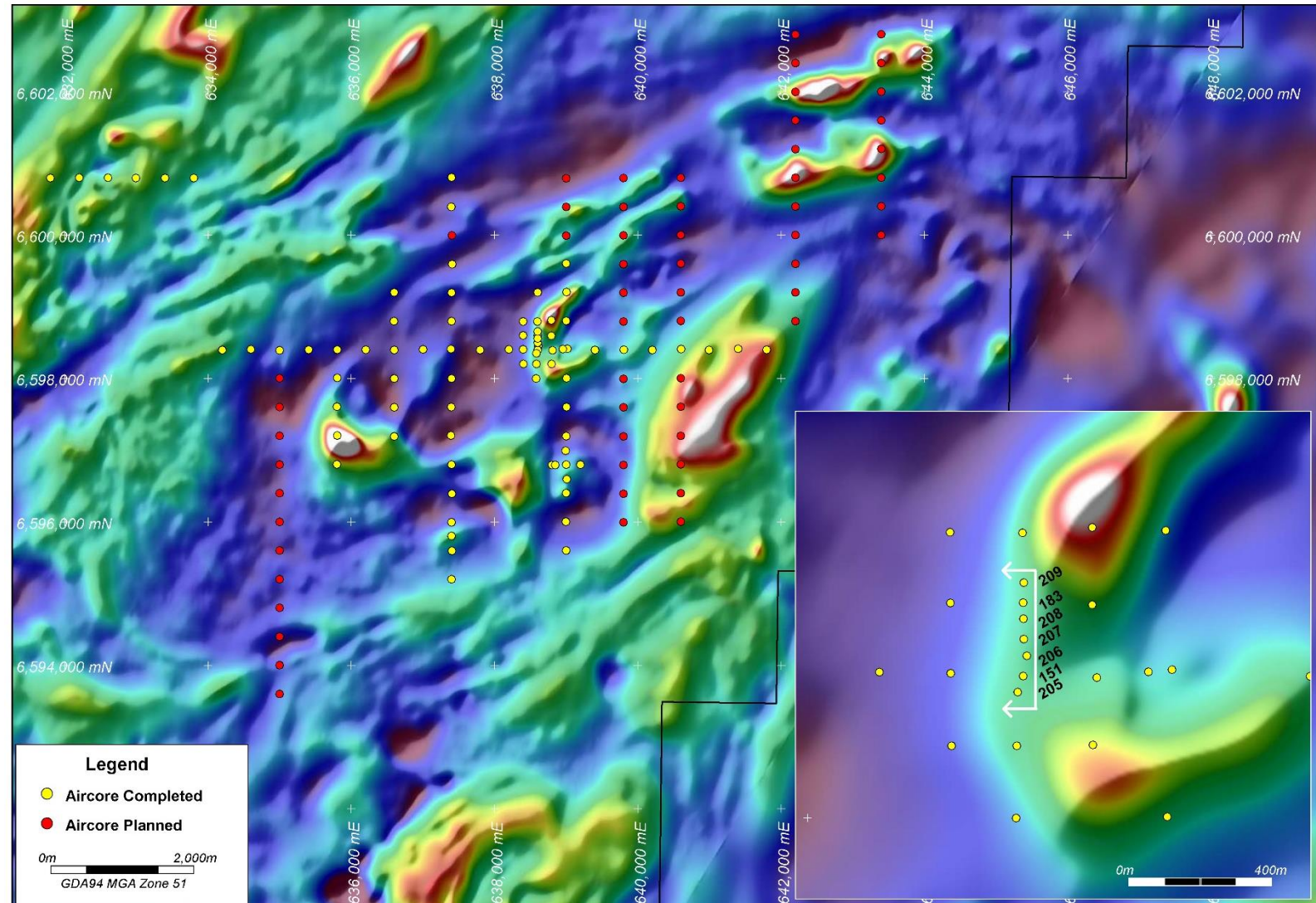
- **Within the Fraser Zone**
  - Defined by 430km long gravity “trend”
  - Mapped as mafic / ultramafic intrusives
  - Analogies to Thompson Belt in Canada which contains clusters of orebodies
  - Contains three gravity “Hot Spots”
- **Area D lies on NE margin of central HS**
- **Nova lies on NE margin of southern HS**

*“Fraser Zone considered highly prospective”*



- Multiple aeromag targets within 16km x 5km feature
- RC/DD Drilling – July 2016  
Positive petrology
- November 2017 first aircore programme – broad spaced
- March 2018 – June 2018  
8,000m programme ongoing
- Ultimate aim to generate  
areas of focus for innovative  
EM surveys

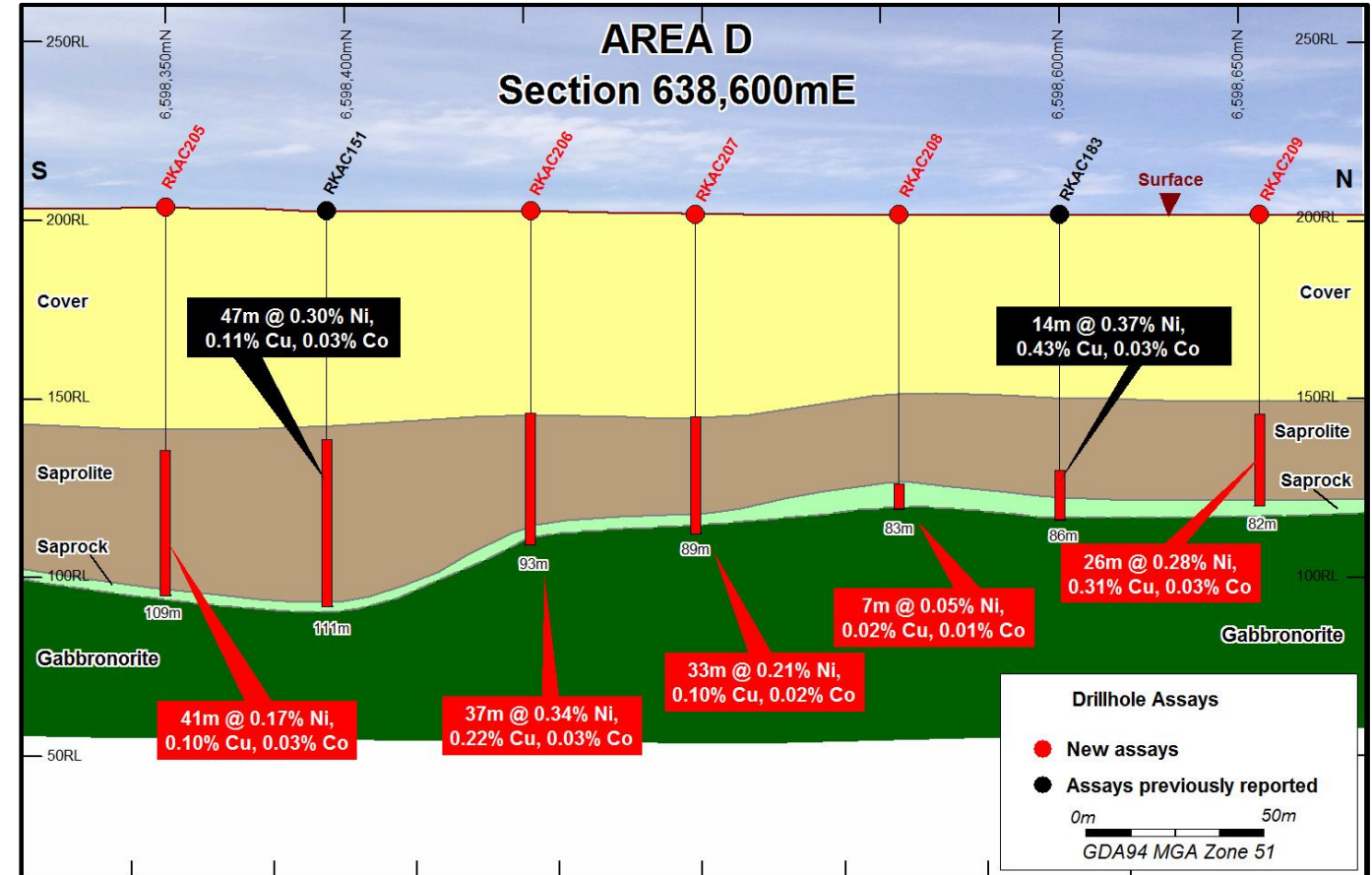
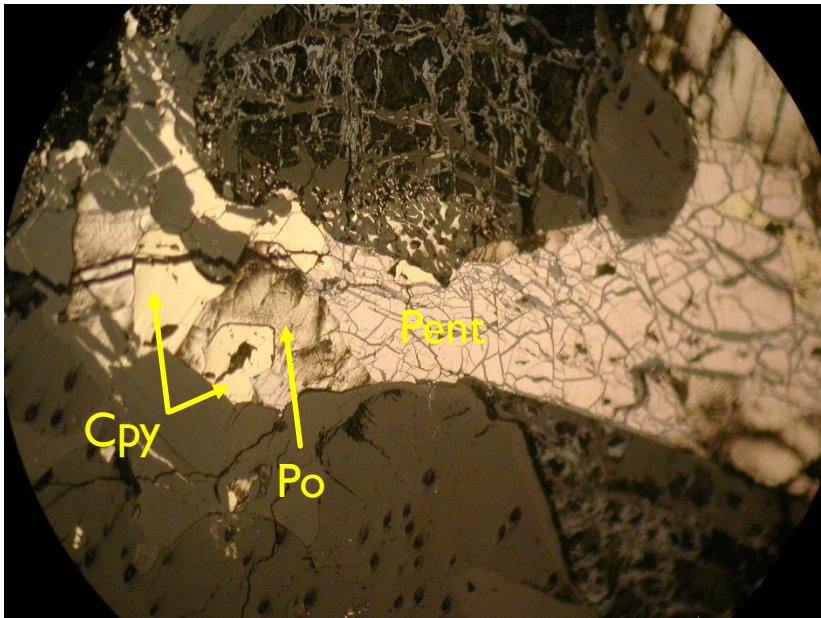
### Area D – Drillholes on Aeromagnetics





## AREA D – RIGHT GEOLOGY

- Thick blanket of nickel-copper-cobalt enrichment
- All holes ended in mineralisation
- All holes ended in gabbronorite (Nova Host Rock)
- Sulphides in hole RKAC183



## AREA D – RIGHT LITHOLOGY

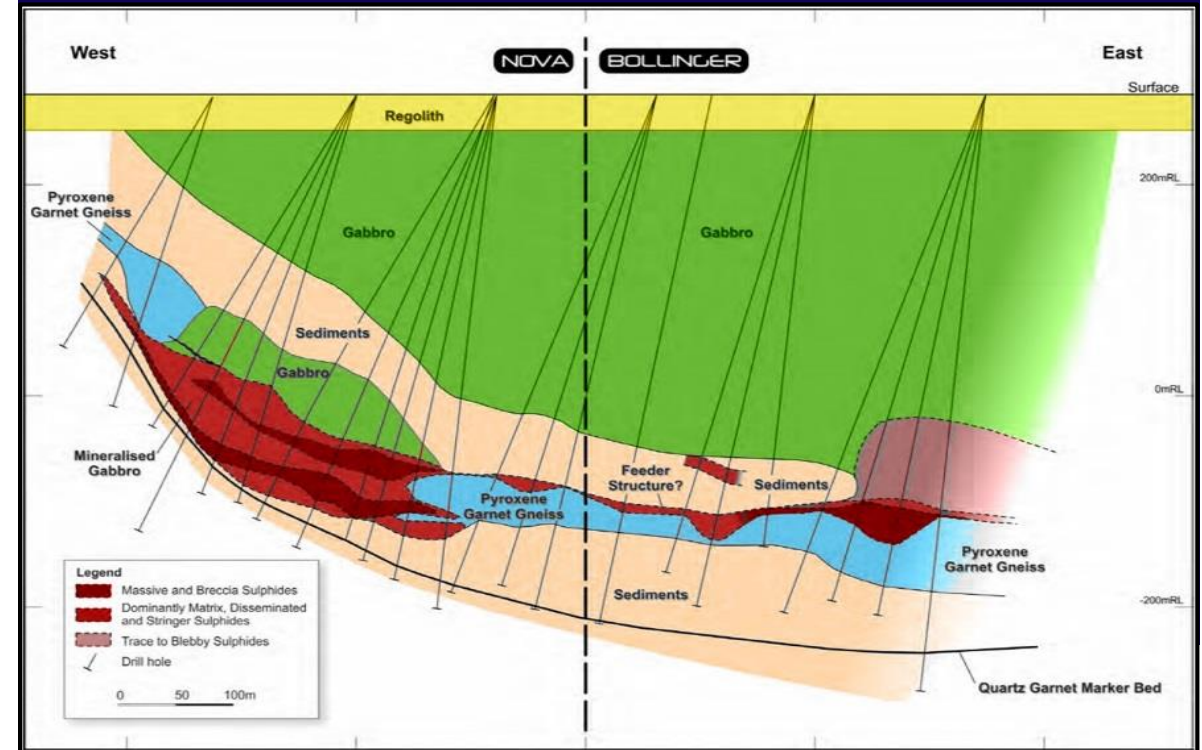


- RKDD002 - Ultramafic with cumulate texture containing disseminated pyrrhotite and minor pentlandite-chalcopyrite
- Sulphidic metasediments/granulite (sulphur source)
- Aircore section - mineralised olivine rich gabbro-norite (Nova host rock)

**Legend's RKDD002 – Simplified Drill Log Summary**

Interval	Description
0 – 80.6m	Regolith
80.6 – 207.0m	Gabbro
207.0 – 603.5m	Mafic-Felsic Metasediments / Granulite
459.3-472.9m	Sulphidic interval
503.0-514.4m	Sulphidic interval
526.4-583.9m	Sulphidic interval
603.5 – 690.6m	Gabbro
626.3-626.8m	Sulphidic interval
661.0-661.35m	Sulphidic interval
690.6 – 717.7m	Mafic Metasediments / Granulite

**Nova-Bollinger Schematic Section (SIR 2014)**







## 2018

- March to June 2018  
– 8,000m aircore programme
- Continued systematic approach  
MLTEM, FLTEM, LF EM  
surveys
- Follow up RC/DD testing





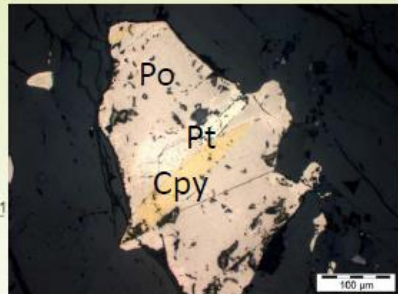
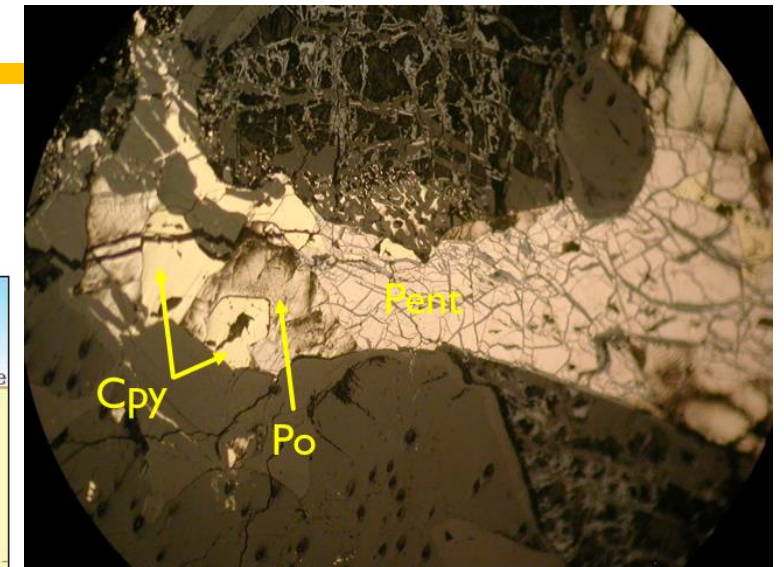
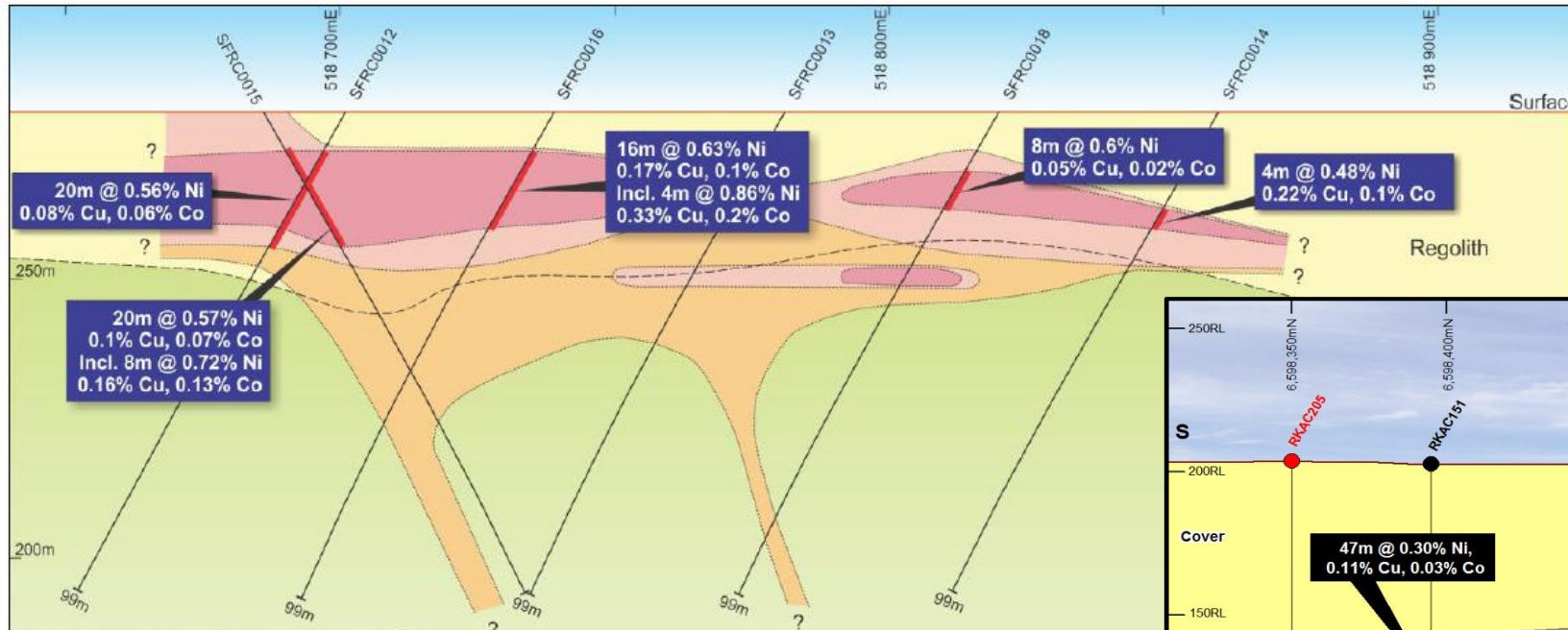
- **Highly Prospective Rockford Project**
  - Two years on ground <10% area first pass EM tested
- **Systematic/persistent/committed = going the distance!**
- **Well Funded**
- **Experienced Stable Team and Partner**
- **Grow Shareholder Value**

*“Highly leveraged to success”*

## SIR Nov 2011 (Nova discovery July 2012)

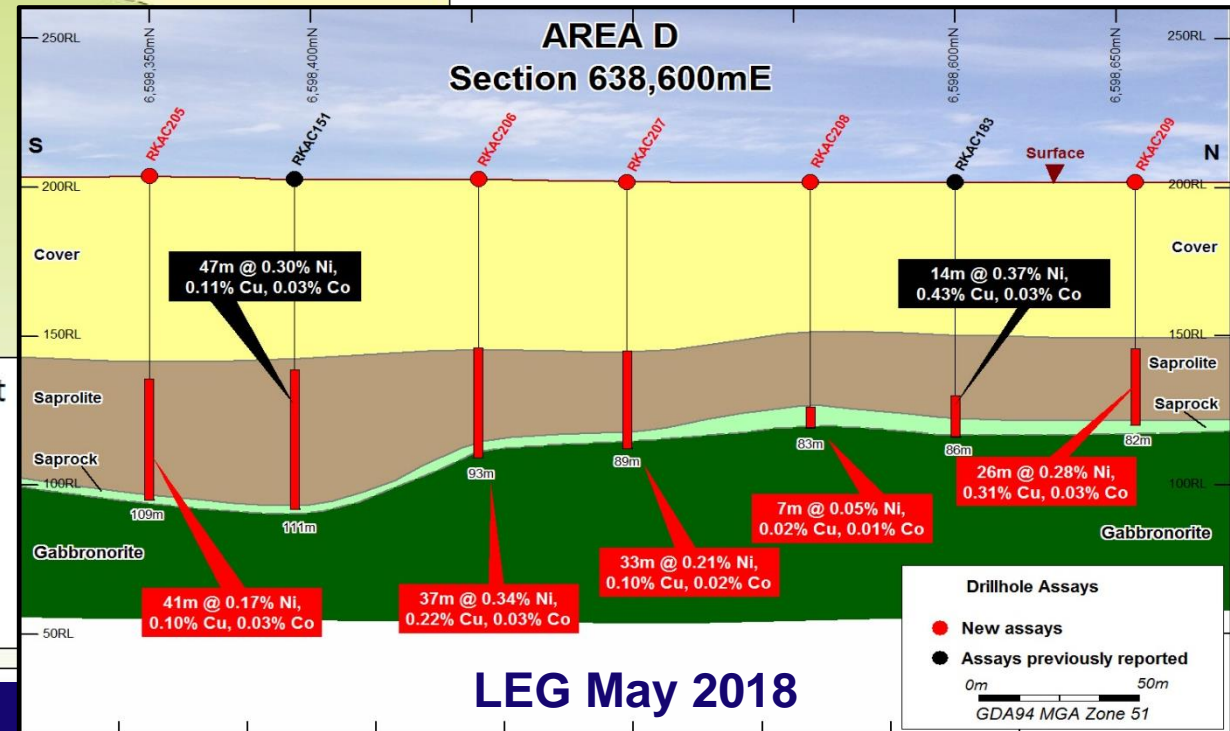
Fraser Range JV:

the Eye nickel-copper anomaly – cross section of drilling on line 6479800N



First (and only) drilling intersected a thick blanket of Ni-Cu-Co enrichment, open in all directions.

Underlying rocks are meta-gabbro/gabbro-norite with disseminated pyrrhotite-pentlandite-chalcopyrite (see microphoto on left)



LEG May 2018

THANK YOU