

ASX:LEG

25 March 2019

ASX Announcement

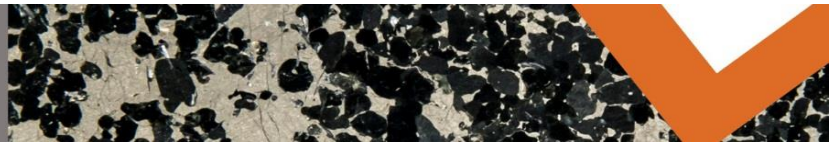
### **Drilling Commences at Rockford**

- **Infill aircore around anomalous drillholes RKAC505 and 520 at Rockford South**
- **Aircore drilling over the up-dip projection of 14 conductors at Area D**
- **3D IP survey at Area D to commence within week**

Legend Mining Limited ("Legend") is pleased to announce the commencement of exploration for the 2019 field season at its Rockford Project in the Fraser Range of Western Australia (see Figure 1). Activities will start with aircore drilling at Rockford South and Area D, along with a 3D Induced Polarisation (IP) survey at Area D. A more detailed discussion follows in the body of this announcement.



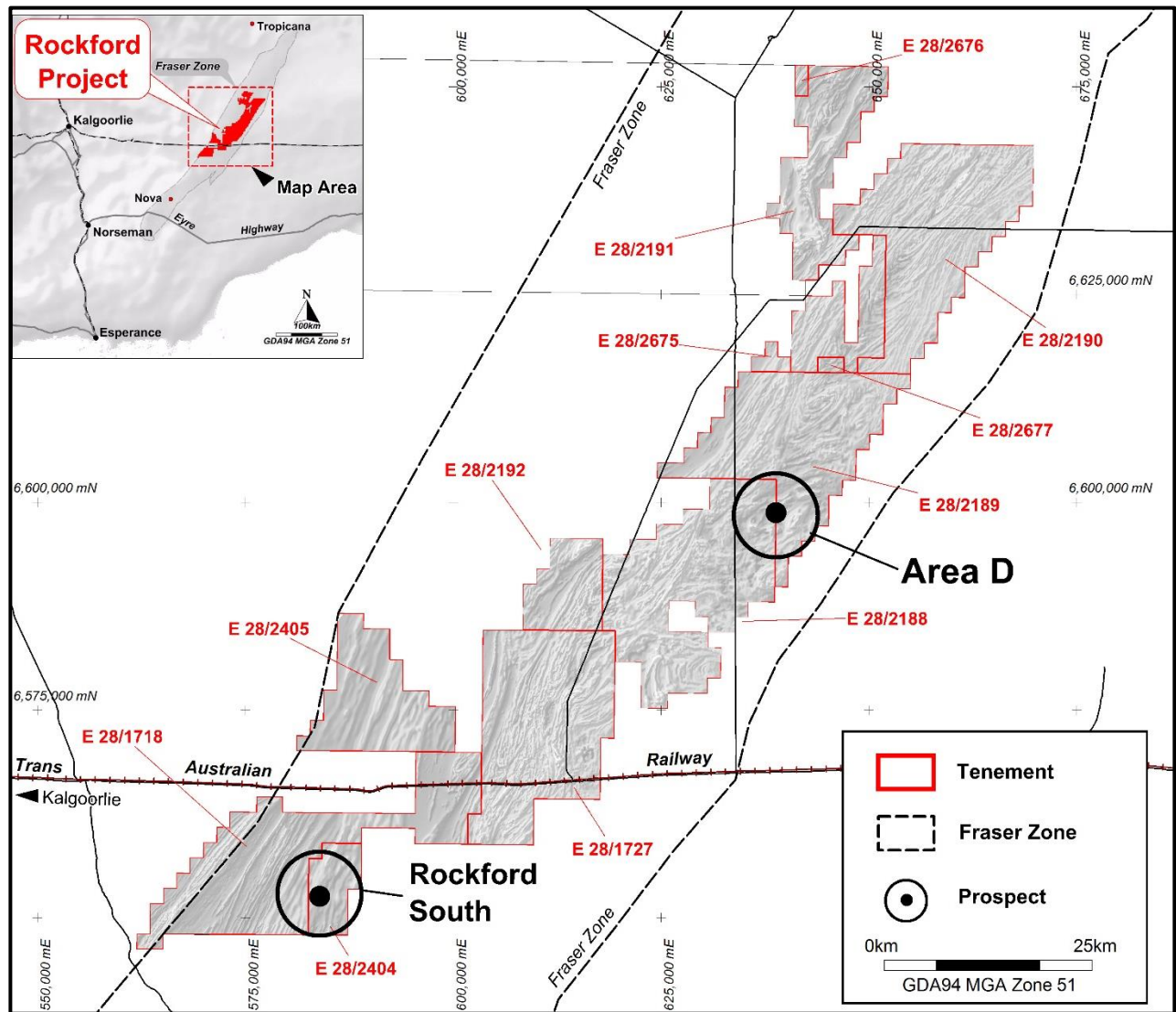
**Aircore Drilling at Rockford South**



## Discussion

The Rockford Project 2019 aircore drilling programme has now commenced with drilling starting at Rockford South, before moving to Area D and then on to regional targets within a 25km radius of Area D (see Figure 1).

The programme will comprise 100 holes for approximately 8,000m and is expected to take 6-8 weeks to complete with results reported as they come to hand.

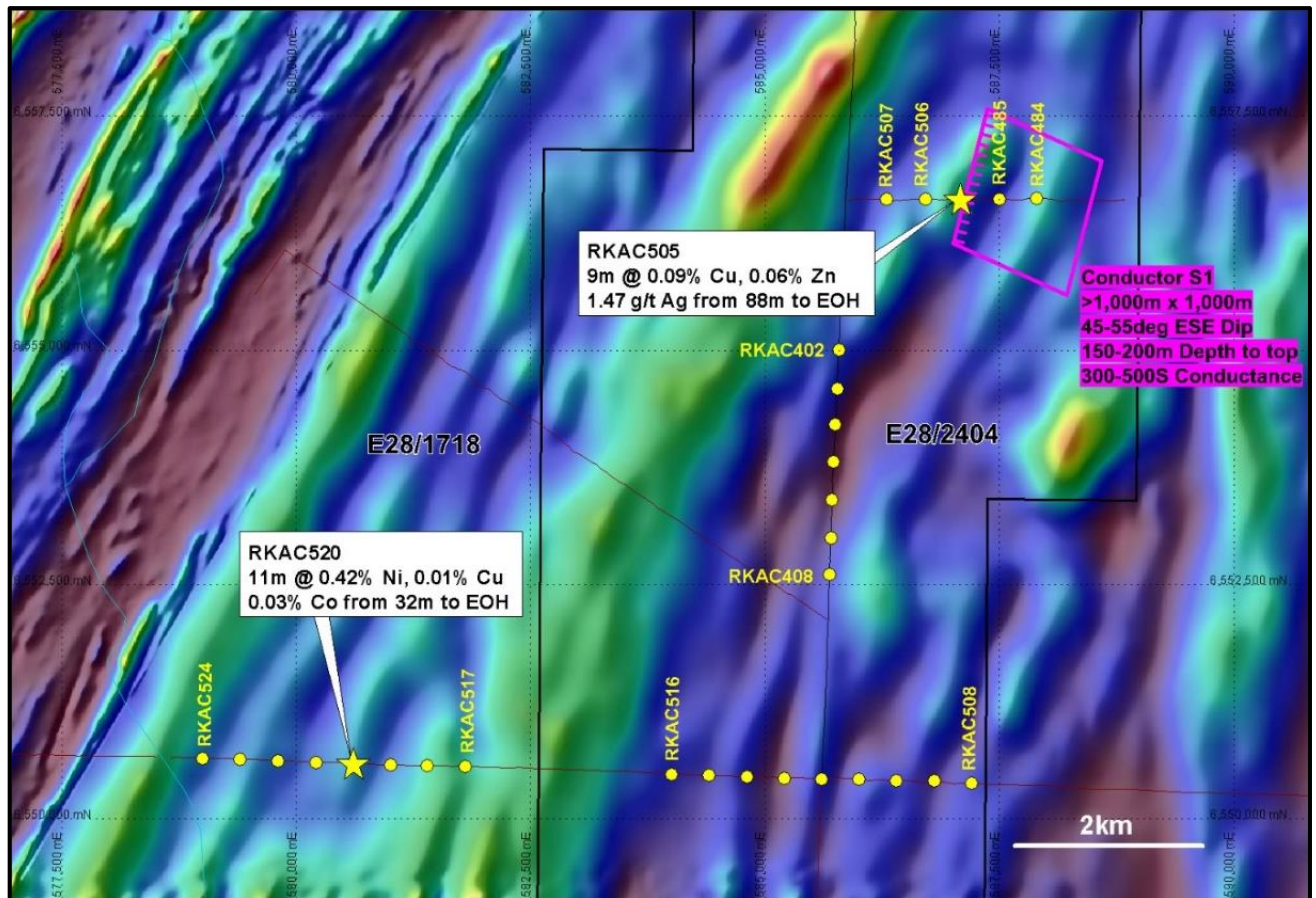
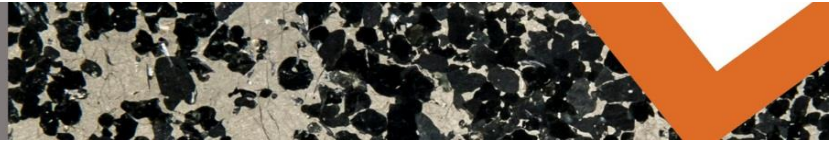


**Figure 1: Rockford Project - Area D and Rockford South Prospects**

### Aircore Drilling – Rockford South

At Rockford South the aircore drilling is following up anomalous results in previous drillholes RKAC505 and RKAC520 (ASX announcement 5 December 2018). These drillholes identified two different styles of mineralisation with RKAC505 displaying characteristics of a Cu-Zn-Ag VMS system, while RKAC520 is considered a magmatic Ni-Cu intrusive related style (see Figure 2).





**Figure 2: Rockford South Aircore Drillholes with S1 Conductor on Aeromagnetic Image**

The drilling (200m north, south, east and west of RKAC505 and RKAC520) is aimed at defining the extent of the anomalous geochemical footprint surrounding both holes, and will also provide further bedrock information associated with the previously identified S1 EM conductor coincident with RKAC505.

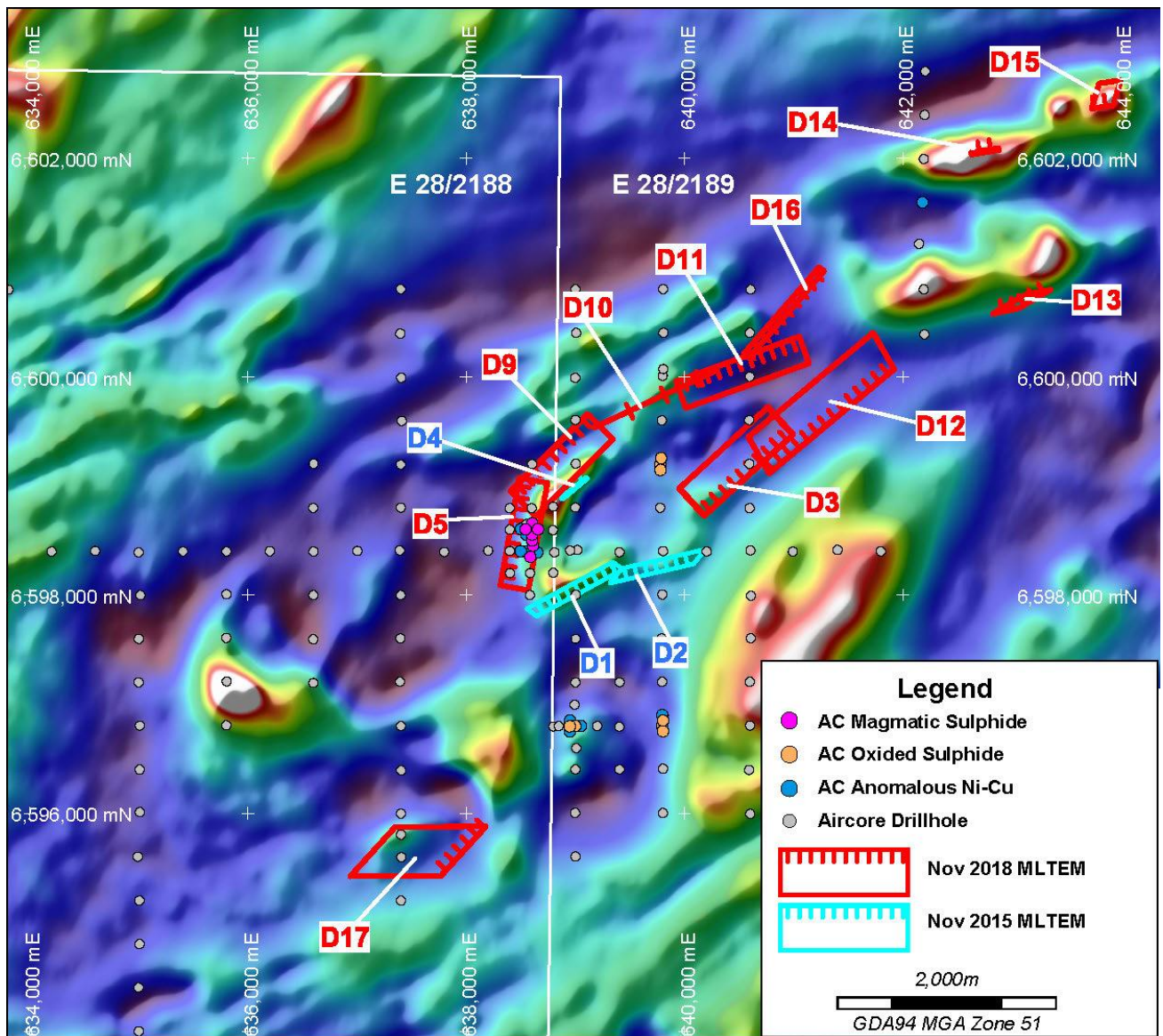
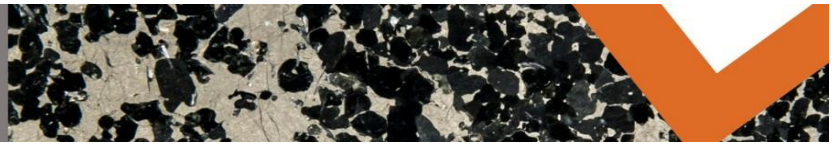
### **Aircore Drilling – Area D**

A 60 hole aircore programme will follow at Area D focussing on the up-dip projection of 14 previously identified conductors (D1-D5, D9-D17), as shown of Figure 3. The drilling is specifically designed to provide geochemical and bedrock lithology information associated with the footwall, top and hangingwall positions of the modelled EM conductor plates.

The ultimate aim of the aircore drilling is to identify favourable Ni-Cu host rocks (gabbro-norite) with associated anomalous Ni-Cu geochemistry  $\pm$  sulphides, as with previous drillhole RKAC183 (ASX announcement 9 April 2018).

The results from this aircore drilling will be integrated with the MLTEM survey results (and IP survey see over page) to assist in the prioritisation/ranking of the 14 EM conductors ahead of diamond drilling.





**Figure 3: Area D MLTEM Conductor Plates with Anomalous Aircore Drillholes on Aeromagnetics**

Following the Area D drilling programme, further regional aircore drilling is planned within a 25km radius of Area D targeting features with a similar aeromagnetic/gravity character.

### 3D IP Survey – Area D

A 3D Induced Polarisation (IP) survey over the previously identified MLTEM conductors at Area D is scheduled to commence within the week. The survey will comprise five lines (23.6km) of double offset pole-dipole 3D IP covering an area of ~20km<sup>2</sup> and provide valuable chargeability/resistivity data over the known conductors.

The 3D IP survey data will be integrated with the MLTEM data to assist with the geophysical interpretation and final modelling of the individual conductors.

Based on this geophysical interpretation, the 14 EM conductors will then be prioritised and ranked in conjunction with the results from the aircore drilling programme to assist final diamond drillhole design.

### **Programme Summary and Future Activities**

- Aircore drilling at Rockford South following up anomalous previous aircore results.
- Aircore drilling at Area D over 14 previously identified MLTEM conductors.
- 3D IP survey at Area D over MLTEM conductors to assist diamond drillhole design.
- Regional aircore drilling in 25km<sup>2</sup> radius surrounding Area D.
- Diamond drilling of Area D conductors following completion of aircore and IP programmes and full interpretation of data.

### **Competent Person Statement**

*The information in this report that relates to Exploration Results is based on information compiled by Mr Derek Waterfield, a Member of the Australian Institute of Geoscientists and a full time employee of Legend Mining Limited. Mr Waterfield has sufficient experience that is relevant to the styles of mineralisation and types of deposit under consideration, and to the activity being undertaken, to qualify as a Competent Person as defined in the 2012 Edition of the “Australasian Code for Reporting of Exploration Results, Mineral Resources and Ore Reserves” (JORC Code). Mr Waterfield consents to the inclusion in the report of the matters based on his information in the form and context in which it appears.*

*The information in this report that relates to Legend’s Exploration Results is a compilation of previously released to ASX by Legend Mining (9 April 2018, 19 November 2018 & 5 December 2018) and Mr Derek Waterfield consents to the inclusion of these Results in this report. Mr Waterfield has advised that this consent remains in place for subsequent releases by Legend of the same information in the same form and context, until the consent is withdrawn or replaced by a subsequent report and accompanying consent. Legend confirms that it is not aware of any new information or data that materially affects the information included in the original market announcements and that all material assumptions and technical parameters in the market announcements continue to apply and have not materially changed. Legend confirms that the form and context in which the Competent Person’s findings are presented have not been materially modified from the original market announcements.*

Visit [www.legendmining.com.au](http://www.legendmining.com.au) for further information and announcements.

### **For more information:**

Mr Mark Wilson  
Managing Director  
Ph: (08) 9212 0600

Mr Derek Waterfield  
Executive Director - Technical  
Ph: (08) 9212 0600