

19 AUGUST 2020

Estelle Gold – Broad Gold Mineralisation with High Grade Zones at Korbel

Estelle continues to grow into a very large continuous gold system with further broad intervals at Korbel identified, where mineralisation remains open at depth and strike.

- Continuity of gold mineralisation confirmed at Korbel defined by KBDH-005 to 012
- Significant new diamond drilling gold intercepts at Korbel include:
 - 101m @ 1.3 g/t incl. 82m @ 1.5 g/t, 30m @ 2.4 g/t, 3m @ 7.7 g/t, 6m @ 4.7 g/t and 3m @ 8.2 g/t in KDBH-012
KBDH-012 returned an overall average grade of 0.6 g/t Au over 429m from 3m within the Korbel intrusive with multiple high-grade zones
 - 150m @ 0.6 g/t incl. 21m @ 1.6 g/t in KBDH-005
 - 163m @ 0.6 g/t incl. 87m @ 0.7 g/t in KBDH-009
 - 137m @ 0.6 g/t incl. 97m @ 0.7 g/t in KBDH-010
- South East of Block B continues to grow outside the current 2.5Moz resource model
- Gold footprint for Block A and B extends +1500m strike
 - Significant growth potential remains
 - Many holes end in mineralisation or have further depth potential.
 - New zones discovered, particularly to the south and east
- Phase 1 Mineral Resource update on Block B due shortly

NVA CEO, Mr. Christopher Gerteisen commented: *"The scale and dimensions of the near surface and continuous mineralisation at Korbel continue to impress, particularly with the high-grade pods now being identified outside the current 2.5Moz resource model as we increase the overall footprint of the system, along strike and down dip where substantial thicknesses of mineralisation remain open.*

As we have repeatedly stated, our next corporate goal was to add significant ounces in this current drill program and we strongly believe this will be eclipsed during the course of this year.

Drilling is continuing with one diamond drill rig now on Block A, Pad 2, where similar potential to Block B remains. We are working to extend the resource both in strike and length; the second diamond rig is completing Pad 2 while Pad 6 is to follow on the high-grade zone to the southeast, which we have now discovered. In addition, we will be commencing RC drilling to scout targets within Korbel, testing the deposit at strike length- another encouraging step on our path towards production.

We look forward to bringing shareholders further results as they become available as well as our Phase 1 mineral resource update on Block B.”

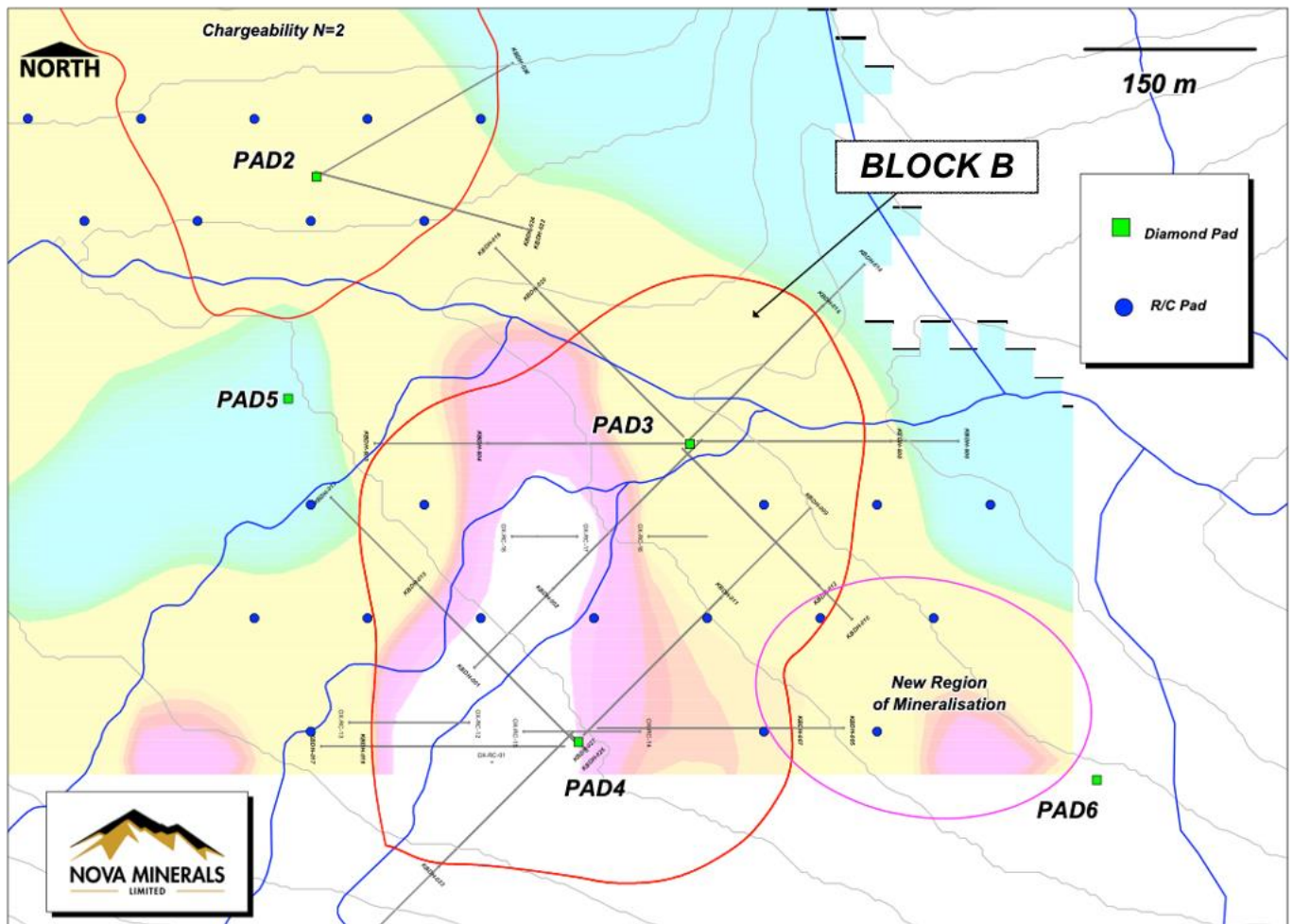


Figure 1. Korbelt Drill Layout and Southeast Quadrant Discovery

Nova Minerals Limited (**Nova or Company**) (ASX: **NVA**, OTC: **NVAAF**, FSE: **QM3**) is pleased to provide an update on its current drilling and assays for the Korbelt prospect (table 1), within the Company's flagship Estelle Gold Project located in the prolific Tintina Gold Belt.

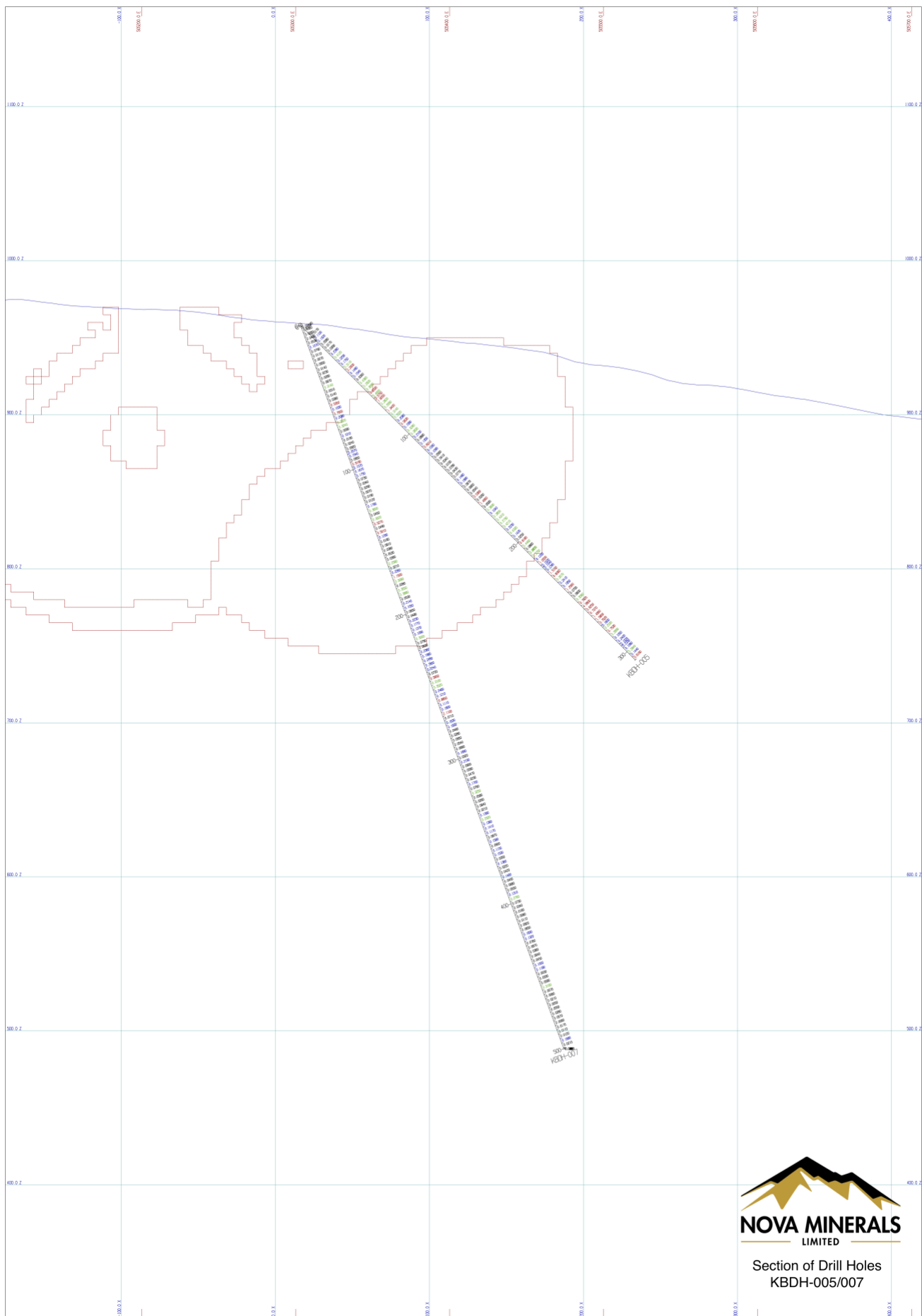


Figure 2. Cross Section KBDH-005/007

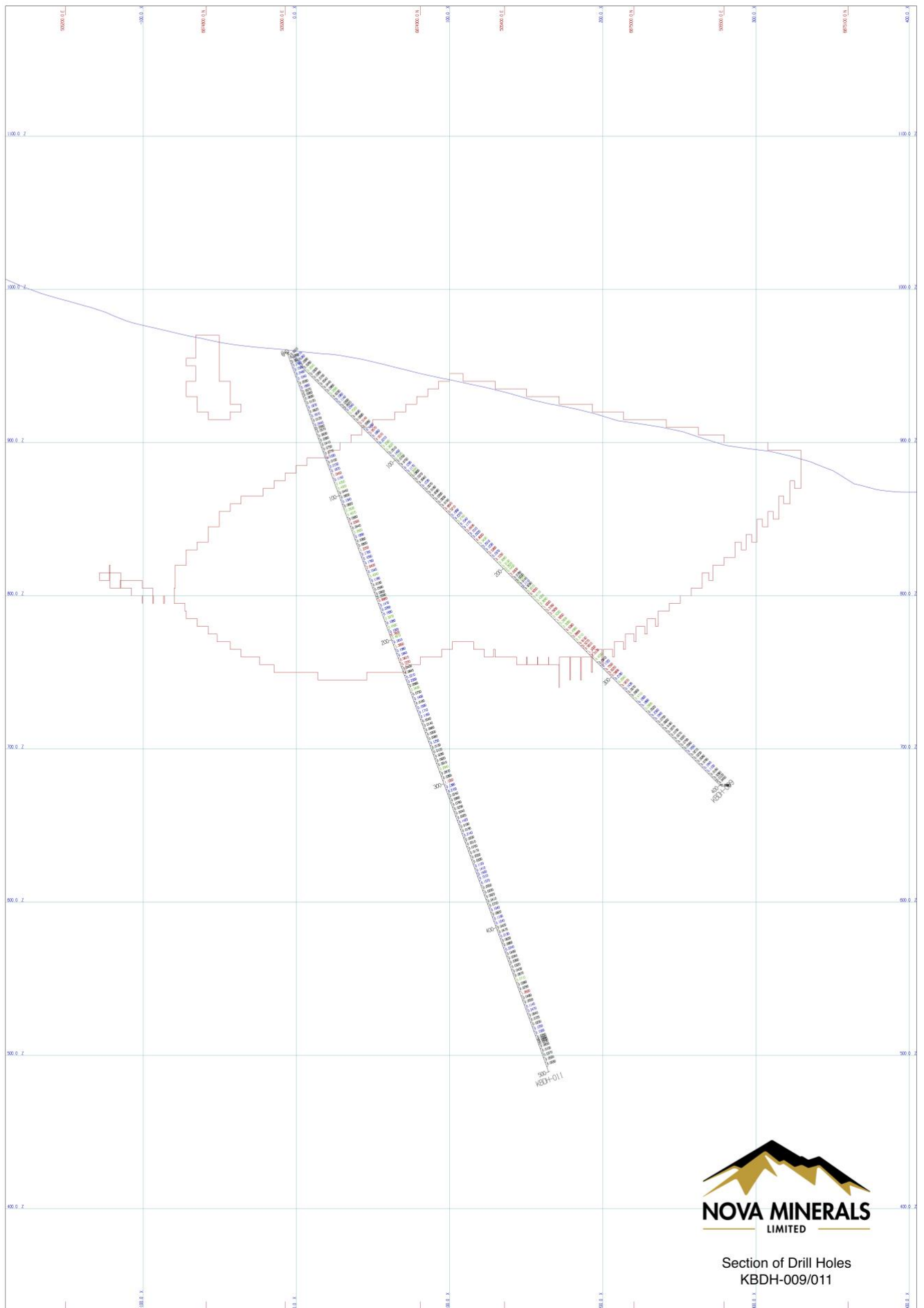


Figure 4. Cross Section KBDH-009/011

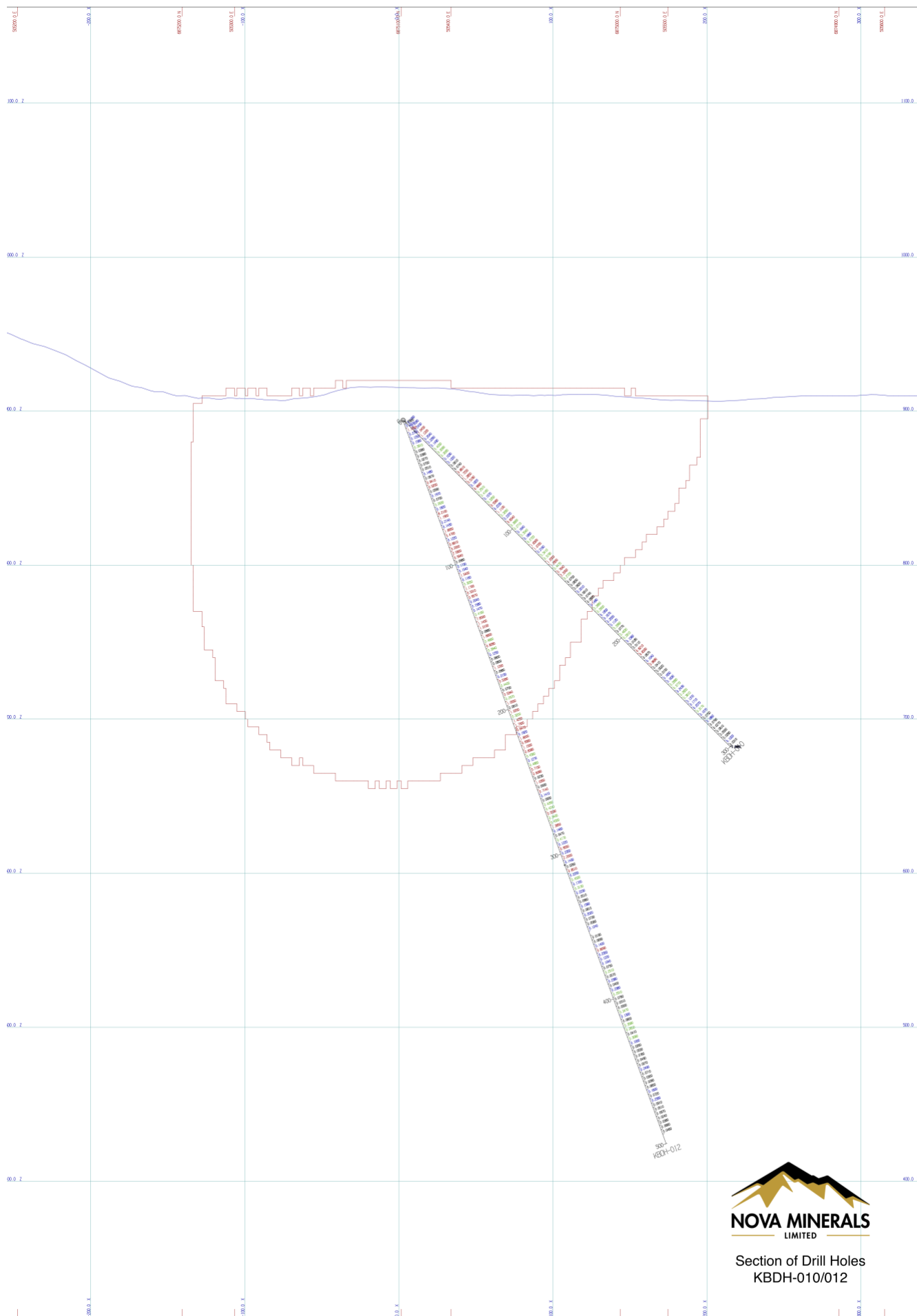


Figure 5. Cross Section KBDH-010/012

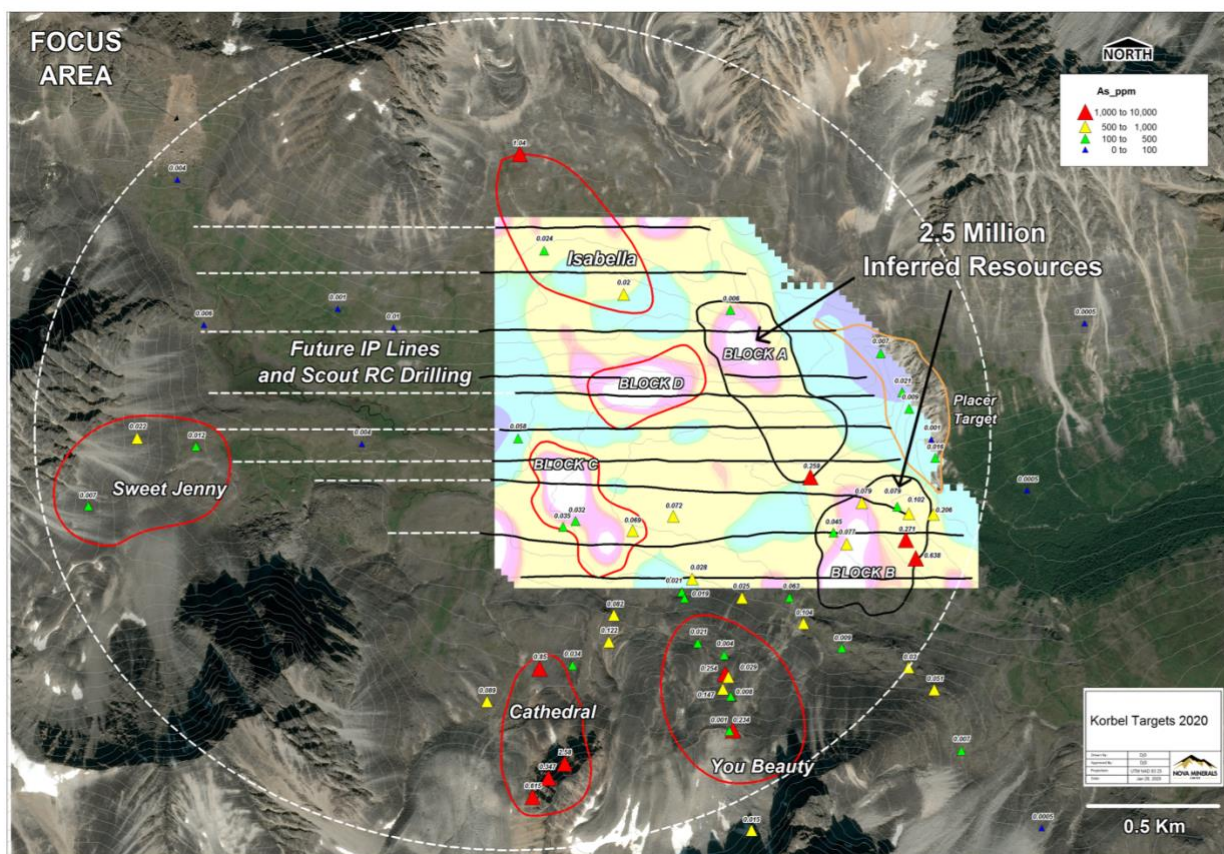


Figure 5. Korbelt Area of interest

Hole Id	From (m)	To (m)	Width (m)	Au (g/t)
KBDH-005	27	308	281	0.5
Includes	27	115	88	0.5
Includes	157	308	150	0.6
Includes	255	276	21	1.6
KBDH-006	No Significant Values			
KBDH-007	42	399	357	0.2
Includes	54	280	226	0.2
Includes	134	271	137	0.3
KBDH-008	13	292	280	0.1
Includes	13	91	78	0.3
Includes	13	48	36	0.4
KBDH-009	66	341	276	0.4
Includes	144	308	163	0.5
Includes	223	311	88	0.6
KBDH-010	1	273	272	0.4
Includes	11	148	137	0.6
Includes	48	145	98	0.7
KBDH-011	8	475	467	0.2
Includes	79	219	140	0.4
Includes	118	219	101	0.5
KBDH-012	3	433	429	0.6
Includes	42	369	326	0.7
Includes	64	314	250	0.9
Includes	64	164	101	1.3
Includes	64	146	82	1.5
Includes	64	94	30	2.4
Includes	137	158	22	1.8

Table 1. Table of Intercepts of KBDH-005 to 012

* Widths are report as core length. Future true widths will be calculated by measuring the distance perpendicular to the dip of the mineralized zone on any given cross section that the intercept appears on. Two holes per section are required to calculate true thickness. No "Top Cap" has been applied to calculation of any intercepts. A "Top Cap" analysis will be completed during a future Resources Study and applied if applicable. Widths of intersection are calculated by applying a weighted average ($\text{Sum [G} \times \text{W]} / \text{Sum [W]}$) to the gold values and reported widths within any given intercepts. The CP will visually select the intercept according to natural grouping of higher-grade assays. Zones of internal dilution my vary depending on the CP discretion as to what is geologically significant. Sub intersection of higher grades within any given intercepts may be broken out if present.

Inferred Resource - Estelle Oxide			
Cut-off Au g/t	Tonnes	Grade Au g/t	Gold Ounces
0.10	225,538,080	0.37	2,711,997
0.15	205,188,840	0.40	2,625,636
0.18	181,291,950	0.43	2,500,538
0.20	169,590,735	0.45	2,431,838
0.30	96,634,435	0.59	1,833,081
0.40	68,620,730	0.70	1,544,369
0.50	47,371,345	0.82	1,244,330

Table 2. Mineral Resource Statement, Korbel deposit, Estelle property.
(ASX announcement: 11 September 2019)

To learn more please visit: <https://novaminerals.com.au/estelle-gold/>.

This announcement has been authorised for release by the Board.

-Ends-

Further information:

Christopher Gerteisen
CEO and Executive Director
E: info@novaminerals.com.au
P: +61 39537 1238

Ian Pamensky
Company Secretary
E: info@novaminerals.com.au
P: +61 414 864 746

Streamlined Competent Person Statement

The information in the announcement dated 02 September 2019, 9 December 2019 and 11 September 2019 that relate to Exploration Results, Exploration target and JORC Resource estimate is based on information compiled by Mr Dale Schultz. Mr Dale Schultz, Principle of DjS Consulting, who is Nova groups Chief Geologist and COO of Nova Minerals subsidiary Snow Lake Resources Ltd., compiled the technical information in this release and is a member of the Association of Professional Engineers and Geoscientists of Saskatchewan (APEGS), which is ROPO, accepted for the purpose of reporting in accordance with ASX listing rules. Mr Schultz has sufficient experience relevant to the style of mineralization and type of deposit under consideration and to the activity which he is undertaking to qualify as a Competent Person as defined in the 2012 edition of

the 'Australian Code for Reporting of Exploration Results, Mineral Resources and Ore Reserves'. Mr Schultz consents to the inclusion in the report of the matters based on information in the form and context in which it appears.

The Exploration results were reported in accordance with Clause 18 of the Australasian Code for Reporting of Exploration Results, Mineral Resources and Ore Reserves (2012 Edition) (JORC Code).

Nova Minerals confirms in the subsequent public report that it is not aware of any new information or data that materially affects the information included in the relevant market announcements on the 02 September 2019 and 9 December, 2019 and, in the case of the exploration results, that all material assumptions and technical parameters underpinning the results in the relevant market announcement continue to apply and have not materially changed.

Cautionary Note Regarding Forward-Looking Statements

This news release contains "forward-looking information" within the meaning of applicable securities laws. Generally, any statements that are not historical facts may contain forward-looking information, and forward looking information can be identified by the use of forward-looking terminology such as "plans", "expects" or "does not expect", "is expected", "budget" "scheduled", "estimates", "forecasts", "intends", "anticipates" or "does not anticipate", or "believes", or variations of such words and phrases or indicates that certain actions, events or results "may", "could", "would", "might" or "will be" taken, "occur" or "be achieved." Forward-looking information is based on certain factors and assumptions management believes to be reasonable at the time such statements are made, including but not limited to, continued exploration activities, Gold and other metal prices, the estimation of initial and sustaining capital requirements, the estimation of labour costs, the estimation of mineral reserves and resources, assumptions with respect to currency fluctuations, the timing and amount of future exploration and development expenditures, receipt of required regulatory approvals, the availability of necessary financing for the Project, permitting and such other assumptions and factors as set out herein.

Forward-looking information is subject to known and unknown risks, uncertainties and other factors that may cause the actual results, level of activity, performance or achievements of the Company to be materially different from those expressed or implied by such forward-looking information, including but not limited to: risks related to changes in Gold prices; sources and cost of power and water for the Project; the estimation of initial capital requirements; the lack of historical operations; the estimation of labour costs; general global markets and economic conditions; risks associated with exploration of mineral deposits; the estimation of initial targeted mineral resource tonnage and grade for the Project; risks associated with uninsurable risks arising during the course of exploration; risks associated with currency fluctuations; environmental risks; competition faced in securing experienced personnel; access to adequate infrastructure to support exploration activities; risks associated with changes in the mining regulatory regime governing the Company and the Project; completion of the environmental assessment process; risks related to regulatory and permitting delays; risks related to potential conflicts of interest; the reliance on key personnel; financing, capitalisation and liquidity risks including the risk that the financing necessary to fund continued exploration and development activities at the Project may not be available on satisfactory terms, or at all; the risk of potential dilution through the issuance of additional common shares of the Company; the risk of litigation.

Although the Company has attempted to identify important factors that cause results not to be as anticipated, estimated or intended, there can be no assurance that such forward-looking information will prove to be accurate, as actual results and future events could differ materially from those anticipated in such information. Accordingly, readers should not place undue reliance on forward-looking information. Forward looking information is made as of the date of this announcement and the Company does not undertake to update or revise any forward-looking information this is included herein, except in accordance with applicable securities laws.

Appendix 1. Summary table of drill hole details.

HOLE ID	UTM E	UTM N	ELEV (m)	AZ	DIP	EOH (m)
KBDH-005	505303	6874853	958	90	-45	308
KBDH-006	505391	6875106	913	90	-45	326
KBDH-007	505303	6874853	958	90	-70	551
KBDH-008	505391	6875106	913	90	-70	497
KBDH-009	505291	6874847	959	45	-45	411
KBDH-010	505378	6875099	894	135	-45	316
KBDH-011	505291	6874847	959	45	-70	499
KBDH-012	505378	6875099	894	135	-70	497

Appendix 2. The following tables are provided to ensure compliance with the JORC Code (2012) requirements for the reporting of the exploration results for the Estelle Gold Project – Alaska

Section 1 Sampling Techniques and Data

(Criteria in this section apply to all succeeding sections.)

Criteria	JORC Code explanation	Commentary
Sampling techniques	<ul style="list-style-type: none"> • Nature and quality of sampling (eg cut channels, random chips, or specific specialised industry standard measurement tools appropriate to the minerals under investigation, such as down hole gamma sondes, or handheld XRF instruments, etc.). These examples should not be taken as limiting the broad meaning of sampling. • Include reference to measures taken to ensure sample representivity and the appropriate calibration of any measurement tools or systems used. • Aspects of the determination of mineralisation that are Material to the Public Report. • In cases where ‘industry standard’ work has been done this would be relatively simple (e.g. ‘reverse circulation drilling was used to obtain 1 m samples from which 3 kg was pulverised to produce a 30 g charge for fire assay’). In other cases more explanation may be required, such as where there is coarse Au that has inherent sampling problems. Unusual commodities or mineralisation types (e.g. submarine nodules) may warrant disclosure of detailed information. 	<ul style="list-style-type: none"> • Core is systematically logged from collar to EOH characterizing rock type, mineralization and alteration. Oriented core measurements are taken where appropriate. Geotechnical measurements such as recoveries and RQDs are taken at 10-foot (3.05 m) intervals. Samples are taken each 10 feet (3.05m) unless there is a change in lithology. In these cases samples are broken to lithologic boundaries. Samples are then half cut with one of the half cuts being sent to the ALS lab in Fairbanks Alaska for processing.
Drilling techniques	<ul style="list-style-type: none"> • Drill type (e.g. core, reverse circulation, open-hole hammer, rotary air blast, auger, Bangka, sonic, etc.) and details (e.g. core diameter, triple or standard tube, depth of diamond tails, face-sampling bit or other type, whether core is oriented and if so, by what method, etc.). 	<ul style="list-style-type: none"> • HQ diamond core triple tube, down hole surveys every 150 feet (~50m), using a Reflex ACT-III tool.

Drill sample recovery	<ul style="list-style-type: none"> • Method of recording and assessing core and chip sample recoveries and results assessed. • Measures taken to maximise sample recovery and ensure representative nature of the samples. • Whether a relationship exists between sample recovery and grade and whether sample bias may have occurred due to preferential loss/gain of fine/coarse material 	<ul style="list-style-type: none"> • Core is processed in the Fairbanks ALS laboratory Core processing room. Recoveries were recorded for all holes, into a logging database to 3cm on a laptop computer by a qualified geologist using the drillers recorded depth against the length of core recovered. No significant core loss was observed. • Triple tube HQ to maximise core recovery. • No known relationship between sample recovery and grade. As no samples have been taken as yet, no assay results are reported, visual results only.
Logger	<ul style="list-style-type: none"> • Whether core and chip samples have been geologically and geotechnically logged to a level of detail to support appropriate Mineral Resource estimation, mining studies and metallurgical studies. • Whether logging is qualitative or quantitative in nature. Core (or costean, channel, etc.) photography. • The total length and percentage of the relevant intersections logged. 	<p>Core logging is carried out by project partner qualified geologists using a project specific logging procedure. Data recorded includes, but is not limited to, lithology, structure, RQD, recovery, alteration, sulphide mineralogy and presence of visible gold. This is supervised by senior geologists familiar with the mineralisation style and nature. Inspection of the drill core by Nova Minerals Chief Geologist is monitored remotely using photographs and logs. Rock codes have been set up specifically for the project. Logging is to a sufficient level of detail to support appropriate Mineral Resource estimation and mining studies.</p> <ul style="list-style-type: none"> • Drill logging is both qualitative by geological features and quantitative by geotechnical parameters in nature. Photographs are taken of

all cores trays, (wet) of whole core prior to cutting.

Sub-sampling techniques and sample preparation

- If core, whether cut or sawn and whether quarter, half or all core taken.
- If non-core, whether riffled, tube sampled, rotary split, etc. and whether sampled wet or dry.
- For all sample types, the nature, quality and appropriateness of the sample preparation technique.
- Quality control procedures adopted for all sub-sampling stages to maximise representivity of samples.
- Measures taken to ensure that the sampling is representative of the in situ material collected, including for instance results for field duplicate/second-half sampling.
- Whether sample sizes are appropriate to the grain size of the material being sampled.

- Samples are taken each 10 feet (3.05m) unless there is a change in lithology. In these cases samples are broken to lithologic boundaries. Samples are then half cut with one of the half cuts being sent to the ALS lab in Fairbanks Alaska for processing. Three different types of SRM are inserted each 20 samples. Duplicates of the reject are taken each 20 samples. One blank is inserted each 40 samples. Data is plotted and evaluated to see if the samples plot within accepted tolerance. If any “out of control” samples are note, the laboratory is notified.

Quality of assay data and laboratory tests	<ul style="list-style-type: none"> • The nature, quality and appropriateness of the assaying and laboratory procedures used and whether the technique is considered partial or total. • For geophysical tools, spectrometers, handheld XRF instruments, etc., the parameters used in determining the analysis including instrument make and model, reading times, calibrations factors applied and their derivation, etc. • Nature of quality control procedures adopted (eg standards, blanks, duplicates, external laboratory checks) and whether acceptable levels of accuracy (ie lack of bias) and precision have been established. 	<ul style="list-style-type: none"> • Samples are tested for gold using ALS Fire Assay Au-ICP21 technique. This technique has a lower detection limit of 0.001 g/t with an upper detection limit of 10 g/t. If samples have grades in excess of 10 g/t then Au-AA25 is used to determine the over detect limit. Au-AA25 has a detection limit of 0.01 g/t and an upper limit of 100 g/t. Three different types of SRM are inserted each 20 samples. Duplicates of the reject are taken each 20 samples. One blank is inserted each 40 samples. Data is plotted and evaluated to see if the samples plot within accepted tolerance. If any “out of control” samples are note, the laboratory is notified.
Verification of sampling and assaying	<ul style="list-style-type: none"> •The verification of significant intersections by either independent or alternative company personnel. •The use of twinned holes. Documentation of primary data, data entryprocedures, data verification, data storage (physical and electronic) protocols. • Discuss any adjustment to assay data. 	<ul style="list-style-type: none"> • Assay data intercepts are compiled and calculated by the CP and then verified by corporate management prior to the release to the public.
Location of data points	<ul style="list-style-type: none"> •Accuracy and quality of surveys used to locate drill holes (collar and down-hole surveys), trenches, mine workings and other locations used in Mineral Resource estimation. • Specification of the grid system used. • Quality and adequacy of topographic control. 	<ul style="list-style-type: none"> • All maps and locations are in UTM grid (NAD83 Z5N) and have been measured by hand-held GPS with a lateral accuracy of ± 4 metres and a vertical accuracy of ± 10 metres.
Data spacing and distribution	<ul style="list-style-type: none"> • Data spacing for reporting of Exploration Results. • Whether the data spacing and distribution is sufficient to establish the degree of geological and grade continuity appropriate for the Mineral Resource and Ore Reserve estimation procedure(s) and classifications applied. • Whether sample compositing has been applied. 	<ul style="list-style-type: none"> • Drill holes have been spaced in a radial pattern such that all dimensions of the resource model is tested. Future geo-stats will be run on the data to determine if addition infill drilling will be required to confirm continuity.

Orientation of data in relation to geological structure	<ul style="list-style-type: none"> • Whether the orientation of sampling achieves unbiased sampling of possible structures and the extent to which this is known, considering the deposit type. • If the relationship between the drilling orientation and the orientation of key mineralised structures is considered to have introduced a sampling bias, this should be assessed and reported if material. 	<ul style="list-style-type: none"> • The relationship between the drilling orientation and the orientation of key mineralised structures has not been confirmed.
Sample security	<ul style="list-style-type: none"> • The measures taken to ensure sample security 	<ul style="list-style-type: none"> • A secure chain of custody protocol has been established with the site geologist locking samples in secure shipping container at site until loaded on to aircraft and shipped to the secure restricted access room at Fairbanks ALS Laboratory for core processing by Nova Minerals staff geologists.
Audits or Reviews	<ul style="list-style-type: none"> • The results of any audits or reviews of sampling techniques and data. 	<ul style="list-style-type: none"> • No review has been undertaken at this time.

Section 2 Reporting of Exploration Results
(Criteria in this section apply to all succeeding sections.)

Criteria	JORC Code explanation	Commentary
Mineral tenement and land tenure status	<ul style="list-style-type: none"> • Type, reference name/number, location and ownership including agreements or material issues with third parties such as joint ventures, partnerships, overriding royalties, native title interests, historical sites, wilderness or national park and environmental settings. • The security of the tenure held at the time of reporting along with any known impediments to obtaining a licence to operate in the area. 	<ul style="list-style-type: none"> • The Estelle project is comprised of Three hundred and Sixty eight (368) State of Alaska mining claims consisting of 220km² for the entire claim group. • The mining claims are wholly owned by AKCM (AUST) Pty Ltd. (an incorporated Joint venture (JV Company between Nova Minerals Ltd and AK Minerals Pty Ltd) via 100% ownership of Alaskan incorporate company AK Custom Mining LLC. AKCM (AUST) Pty Ltd is owned 85% by Nova Minerals Ltd, 15% by AK Minerals Pty Ltd. AK Minerals Pty Ltd holds a 2% NSR (ASX Announcement: 20 November 2017) • Nova owns 85% of the project through the joint venture agreement. • The Company is not aware of any other impediments that would prevent an exploration or mining activity.
Exploration done by other parties	<ul style="list-style-type: none"> • Acknowledgment and appraisal of exploration by other parties. 	<ul style="list-style-type: none"> • Geophysical, Soil testing, and drilling was completed by previous operators in the past. Nova Minerals has no access to this data.
Geology	<ul style="list-style-type: none"> • Deposit type, geological setting and style of mineralisation. 	Nova Mineral is primarily exploring for Intrusion Related Gold System (IRGS) type deposit within the Estelle Project

Drill hole Information	<ul style="list-style-type: none"> • A summary of all information material to the understanding of the exploration results including a tabulation of the following information for all Material drill holes: <ul style="list-style-type: none"> - easting and northing of the drill hole collar - elevation or RL (Reduced Level – elevation above sea level in metres) of the drill hole collar - dip and azimuth of the hole - down hole length and interception depth -hole length. • If the exclusion of this information is justified on the basis that the information is not Material and this exclusion does not detract from the understanding of the report, the Competent Person should clearly explain why this is the case. 	<ul style="list-style-type: none"> • See Appendix 1 summary table of drill hole results.
Data aggregation methods	<ul style="list-style-type: none"> • In reporting Exploration Results, weighting averaging techniques, maximum and/or minimum grade truncations (eg cutting of high grades) and cut-off grades are usually Material and should be stated. • Where aggregate intercepts incorporate short lengths of high grade results and longer lengths of low grade results, the procedure used for such aggregation should be stated and some typical examples of such aggregations should be shown in detail. • The assumptions used for any reporting of metal equivalent values should be clearly stated. 	<ul style="list-style-type: none"> • Widths are report as core length. Future true widths will be calculated by measuring the distance perpendicular to the dip of the mineralized zone on any given cross section that the intercept appears on. Two holes per section are required to calculate true thickness. No “Top Cap” has been applied to calculation of any intercepts. A “Top Cap” analysis will be completed during a future Resources Study and applied if applicable. Widths of intersection are calculated by applying a weighted average ($\text{Sum [G x W]} / \text{Sum [W]}$) to the gold values and reported widths within any given intercepts. The CP will visually select the intercept according to natural grouping of higher-grade assays. Zones of internal dilution may vary depending on the CP discretion as to what is geologically significant. Sub intersection of higher grades within any given intercepts may be broken out if present.

Relationship between mineralisation widths and intercept lengths	<ul style="list-style-type: none"> • These relationships are particularly important in the reporting of Exploration Results. • If the geometry of the mineralisation with respect to the drill hole angle is known, its nature should be reported. • If it is not known and only the down hole lengths are reported, there should be a clear statement to this effect (eg 'down hole length, true width not known'). 	<ul style="list-style-type: none"> • See above
Diagrams	<ul style="list-style-type: none"> • Appropriate maps and sections (with scales) and tabulations of intercepts should be included for any significant discovery being reported These should include, but not be limited to a plan view of drill hole collar locations and appropriate sectional views. 	<ul style="list-style-type: none"> • Plan view Map in Figure 1 shows the hole traces of the PAD3 drilling. Holes completed and / or in progress are also marked. • Cross Section in Figure 2 showing trace of Hole KBDH-001 and 002, R/C holes for 2019 Resource Drilling, and Outline of the Block Model • Figure 3 showing photos of QTZ-ASP sheeted Veins with grades for assay results • Figure 4 Regional Map of the Korbel Valley
Balanced Reporting	<ul style="list-style-type: none"> • Where comprehensive reporting of all Exploration Results is not practicable, representative reporting of both low and high grades and/or widths should be practiced to avoid misleading reporting of Exploration Results. 	<ul style="list-style-type: none"> • Does not apply. All Nova results have been disclosed to the ASX via news releases.
Other substantive exploration data	<ul style="list-style-type: none"> • Other exploration data, if meaningful and material, should be reported including (but not limited to): geological observations; geophysical survey results; geochemical survey results; bulk samples – size and method of treatment; metallurgical test results; bulk density, groundwater, geotechnical and rock characteristics; potential deleterious or contaminating substances. 	<ul style="list-style-type: none"> • No other substantive exploration data has been collected
Further work	<ul style="list-style-type: none"> • The nature and scale of planned further work (eg tests for lateral extensions or depth extensions or large-scale step-out drilling). • Diagrams clearly highlighting the areas of possible extensions, including the main geological interpretations and future drilling areas, provided this information is not commercially sensitive. 	<ul style="list-style-type: none"> • Diamond drilling is ongoing. Project planned is for 20,000 metres plus.

