

UP TO 1.43% Cu, 0.9g/t Au INTERSECTED AT LADY AGNES

- ❖ Assays verify significant copper-gold in wide intersections up to 1.43% Cu and 0.9g/t Au in several holes at Lady Agnes Prospect
- ❖ Notably, the assays confirm the copper sulphide zone – a key target of the drilling campaign has significant size
- ❖ Exploration momentum continues, with geophysical programs to determine targets for the next drilling campaign underway
- ❖ Joint Venture Agreement formalised for the North Isa Project, with Renegade having earned an initial 30% interest

Renegade's chairman Robert Kirtlan commented: "The Board is delighted with the assay results, especially confirmation there are broad zones of significant copper mineralisation in the sulphide zone with gold credits. Further, exploration momentum continues with geophysical programs now underway which will be key to selecting incremental targets for future test-drilling. In a significant corporate move, Renegade has formalised a Joint Venture Agreement for the North Isa Project, which delivers an initial 30% interest and lead operator to drive further development work."

Renegade Exploration Limited, (ASX:RNX), is pleased to advise all assays from the recent drilling campaign at the Lady Agnes Prospect have been returned, with best results:

LARC22 – 001: 17m @ 0.68% Cu, 0.24g/t Au from 85m including;
8m @ 1.07% Cu, 0.36g/t Au from 87m
6m @ 0.39% Cu, 0.29g/t Au from 133m including;
2m @ 1.04% Cu, 0.90g/t Au from 137m

LARC22 – 002: 30m @ 0.51% Cu, 0.06g/t Au from 118m including;
6m @ 1.22% Cu, 0.14g/t Au from 123m
34m @ 0.66% Cu, 0.12g/t Au from 216m including;
6m @ 1.43% Cu, 0.24g/t Au from 237m

LARC22 – 003: 44m @ 0.54% Cu, 0.12g/t Au from 164m including;
4m @ 1.28% Cu, 0.16% Au from 200m

Encouragingly, from analysing the assay results in-depth (refer cross-sections in Figure 1 and 2), the geology team made some exciting observations and interpretations about Lady Agnes Prospect, including:

- ❖ There is significant sulphide mineralisation in the underlying system which are within broad envelopes, with clear evidence of higher-grade copper zones; and
- ❖ The broad zones of mineralisation are interpreted as being open to the south along the Eastern Creek Volcanic (ECV) contact, at depth and to the east of the ECV contact.

ASX ANNOUNCEMENT

8 August 2022

ABN 92 114 187 978
ASX Code: RNX

ISSUED CAPITAL

Shares: 889.6 million
Options: 70.0 million

CORPORATE DIRECTORY

Chairman:
Robert Kirtlan

Director:
Mark Wallace

Director:
Mark Connelly

Company Secretary:
Graeme Smith

CONTACT DETAILS

Level 1, 982 Wellington Street,
West Perth WA 6005
Australia

PO Box 1485
Subiaco WA 6904

E: info@renegadeexploration.com
T: +61 409 842 354

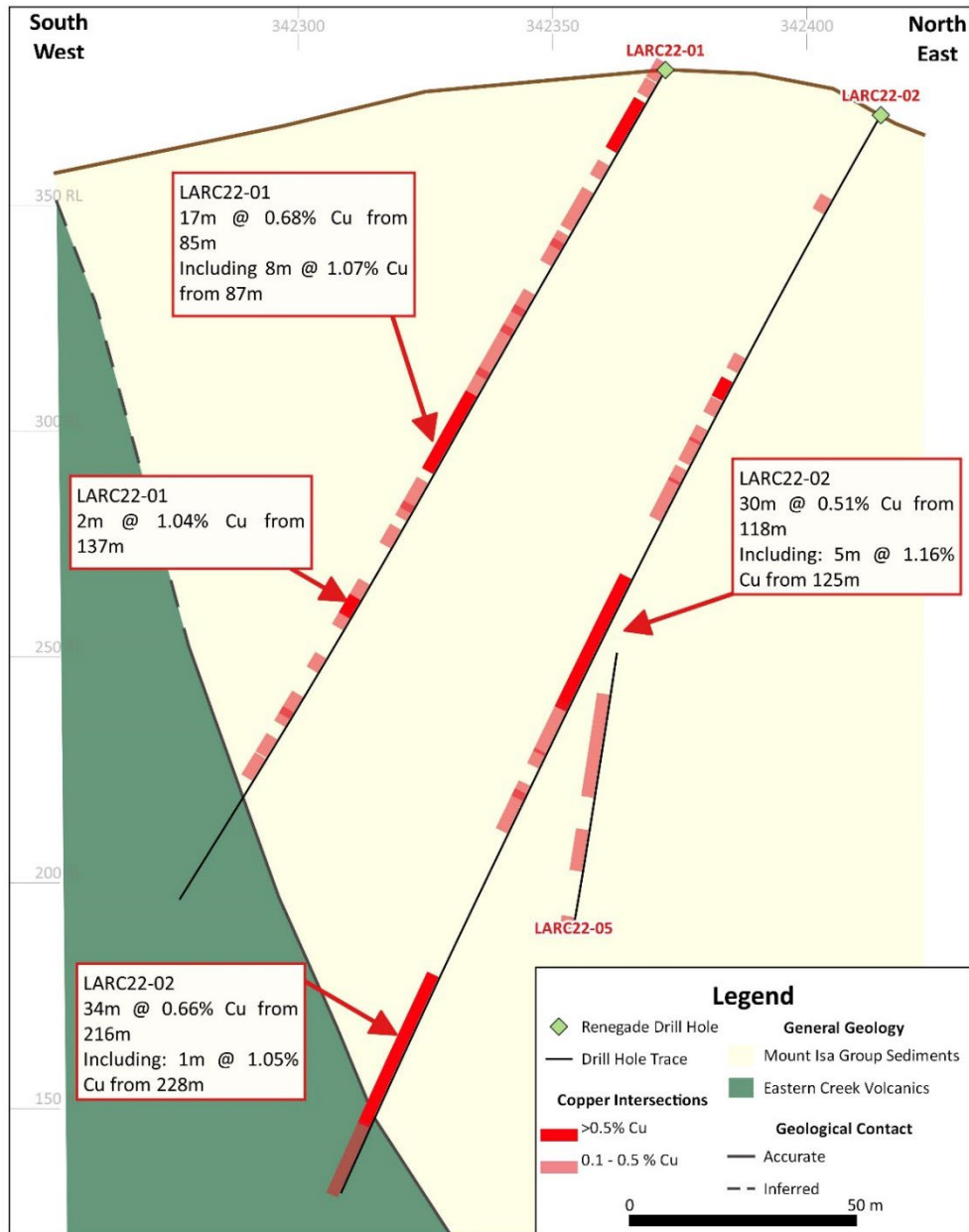
www.renegadeexploration.com



To gain further insights, particularly in light of interpretations garnered from LARC22 – 003, Renegade has sent back the key 44m section from LARC22 – 0003, to the laboratory for further analysis on a 1m basis, as the initial work was done on 4m composite samples.

The RC campaign was designed to test the extent of the near surface copper oxide mineralisation and a historical induced polarisation (IP) anomaly which included drilling the untested upper limits of the IP signature for sulphide mineralisation.

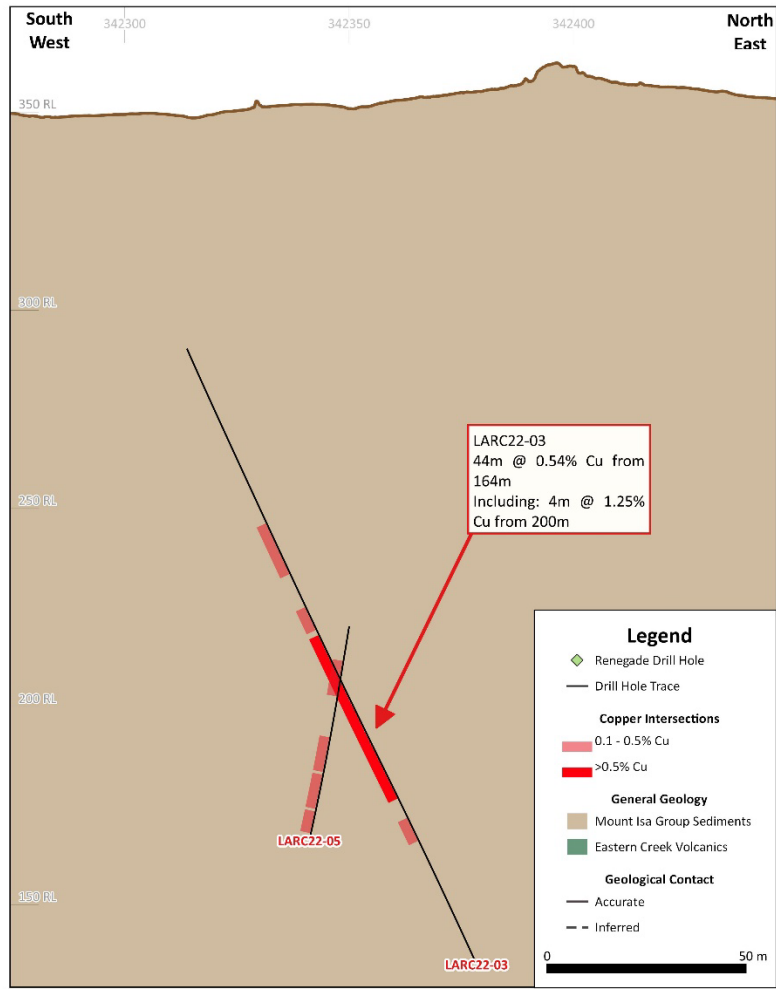
From the assays received it is evident there is significant sulphide mineralisation in the system within at least two broad good grade envelopes which include higher grade zones. Renegade is excited by the results received and interpret the zones of mineralisation as being open to the south along the Eastern Creek Volcanic contact, at depth and to the East of the contact zone as highlighted in the LARC22 -03 result.



1:1,100
MGA94, Zone 54
40m envelope
1:1 vertical exaggeration

**Lady Agnes Prospect
Section 7742240N**

Figure 1: Cross Section LARC22-012 and LARC22-02



1:1,000
MGA94, Zone 54
40m envelope
1:1 vertical exaggeration

**Lady Agnes Prospect
Section 7742195N**

Figure 2: Cross Section LARC22-03 and LARC22-05

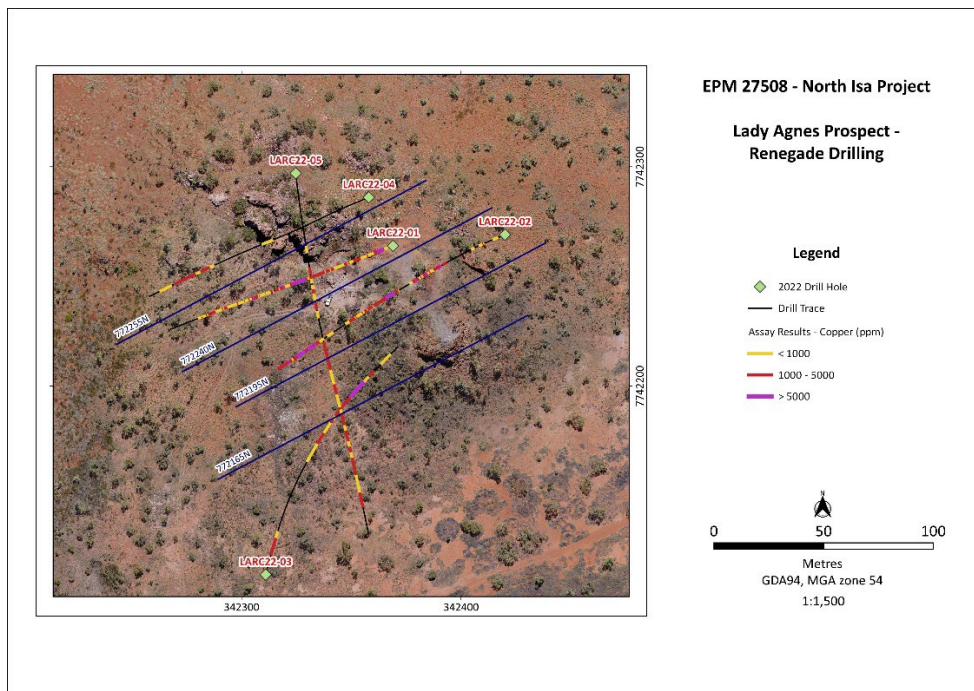


Figure 3: Plan View of all holes drilled

Reconciling results with drilling campaign objectives

To re-cap, the RC drilling campaign was designed to test two overarching targets: 1) the extent of the near surface copper oxide mineralisation; and 2) a historical induced polarisation (IP) anomaly which includes drilling the untested upper limits of the IP signature for sulphide mineralisation.

Previous drilling at Lady Agnes Prospect was undertaken by Mr Isa Mines Limited (MIM) in the early 1980s which intersected broad deep mineralisation. However, this work was never followed up and is summarised in ASX Release dated 23 March 2022.

As such, Renegade's campaign, which comprised five drill-holes for a total of circa 1,200m to an average depth of 247m, was designed in part to leverage the earlier findings from MIM's earlier work. This explains why there was drilling east to west into the ECV unit and south to north under the historic Lady Agnes shaft. The overall outcome was very positive, with four drill-holes intersecting significant copper sulphide mineralisation, some with gold credits.

Based on the results from drilling the Company has developed plans to conduct a gravity survey of the area and a downhole EM survey utilising LARC22 – 02 which was cased for this to occur. Lady Agnes has a massive silica-quartz cap which is interpreted as occurring later than the copper sulphides and in effect has acted to protect the near surface oxides which has attracted explorers to the location. It is interpreted that the whole Lady Agnes area, north south and east, has potential for sulphide mineralisation and the Lady Agnes oxides has been a distraction to exploration of the area in general. Gravity programs will assist in structural definition and may generate targets whilst the downhole EM will "light up" the area around Lady Agnes for potentially 200-400m both laterally and to depth.

Figure 4 is an excellent example of the strongly foliated, Breakaway Shale with 3 - 4% sulphide (pyrite) and minor quartz veining assaying at **4m @ 1.55% Cu and 0.26g/t Au from 237m**.



Figure 4: Lady Agnes Rock Chips LARC22 – 02; 236m – 240m

Copper potential at Lady Agnes Prospect

Renegade is proposing, from the recent drilling information, geological and geophysical interpretation that there is potential for further copper sulphide mineralisation both within the existing main alteration zone consistent with the current IP anomaly but, importantly, also outside of it. Follow up geophysical programs are being designed to assist with the targeting for the next round of drilling at the North Isa Project.

For historical diamond drill-hole, LAG1, mineralisation commences from 273m and intersects a broad zone of copper within a breccia style structure – one of the more common mineralisation hosts in this area. Renegade's drilling campaign was designed to test for sulphide mineralisation from circa 75m - 150m depth above the deeper big zone of mineralisation intersected by the MIM in LAG1 in the early 1980's (See ASX Release dated 23 March 2022 for more information regarding historical LAG1).

The Lady Agnes Prospect is located at a flexure in the Paroo thrust which separates the Basement Eastern Creek Volcanics (ECV) and the Mt Isa Group sediments. At surface, it is represented by extensive brecciation, silicification and visible malachite mineralisation present within the brecciated zones, and in cleavages which is sub-vertical, dipping 82 degrees to the north.

Historical mining focused on higher-grade oxide resources while more recent work (1960's – 2000's) involved drilling and geophysics. Mt Isa Mining, in particular, drilled several deeper holes to test for larger ore bodies along the Western Fault – this included LAG1 (previously reported in ASX Release dated 23 March 2022) which is adjacent to the Lady Agnes Mine.

The North Isa Project is located directly north of the George Fisher Mine, some 25km north of Mt Isa township and controls circa 20km of the Western Fault. The Western Fault and associated faults host the Lady Agnes Mine together with numerous other historical workings. The project straddles the thrust faulted ECV and Mt Isa Group sediment boundary with several existing copper mineral occurrences. This includes the Lady Agnes Mine which is located within an embayment along the faulted ECV/Mt Isa Group contact.

Corporate

Post the drilling campaign, Renegade has now formalised a Joint Venture Agreement for the North Isa Project with Burke Copper. As such, Renegade has earned an initial 30% stake and will take the lead driving all future exploration and development work.

This announcement has been approved by the Board of Renegade Exploration Limited.

For more information please contact:

Robert Kirtlan
Director

info@renegade.com.au

Ends.

About Renegade Exploration Limited

Renegade Exploration Limited (ASX:RNX) is an Australian based minerals exploration and development company.

The Company has an interest in the Carpentaria Joint Venture which has a package of permits in the prolific Cloncurry district of Queensland. The project has several identified advanced copper and gold projects. The Company has recently expanded its Northwest Queensland interests by entering a joint venture on the North Isa Project, located just north of Glencore's George Fisher mining operations.

Renegade also owns 90% of the Yukon Base Metal Project located within the highly prospective Selwyn Basin, Yukon Territory, Canada. The Project is currently the subject of an Option Agreement to sell.

The Company's primary objective is to deliver long-term shareholder value by achieving a production profile and becoming a mid-tier resource company. Renegade strives to achieve this through the discovery, acquisition and development of economic mineral deposits.

Competent Person Statement and Geological Information Sources

Information on the North Isa Project, the subject of this ASX Release, is sourced from the Queensland Department of Resources and data supplied by Mt Isa Mining Limited.

The information in this announcement that relates to geological information for the North Isa Project is based on information compiled by Mr Peter Smith, who is a consultant to the Company. Mr Smith is a Member of the Australian Institute of Geoscientists. Mr Smith has sufficient experience which is relevant to the style of mineralisation and type of deposit under consideration and the activity he is undertaking to qualify as a Competent Person as defined in the 2012 Edition of the Australasian Code for Reporting of Exploration Results (JORC Code). Mr Smith consents to the inclusion in the report of the matters based on the information in the form and context in which it appears.

The information in this announcement that relates to drilling information for the North Isa Project is based on information compiled by Mr Simon Fleming, who is a consultant to the Company. Mr Fleming is a Fellow of the Australian Institute of Mining and Metallurgy and a Member of the Australian Institute of Geoscientists. Mr Fleming has sufficient experience which is relevant to the style of mineralisation and type of deposit under consideration and the activity he is undertaking to qualify as a Competent Person as defined in the 2012 Edition of the Australasian Code for Reporting of Exploration Results (JORC Code). Mr Fleming consents to the inclusion in the report of the matters based on the information in the form and context in which it appears.

The references in this announcement to Exploration Results were reported in accordance with Listing Rule 5.7 in the announcements:

Announcement Title	Date
<i>Promising Lady Agnes Results and Data Review</i>	<i>23 March 2022</i>
<i>Lady Agnes Rocks</i>	<i>21 April 2022</i>
<i>Key Targets Successfully Drill Tested at Lady Agnes</i>	<i>22 June 2022</i>

The Company confirms that it is not aware of any new information or data that materially affects the information included in the previous market announcements noted above.

Follow us on



The following tables are provided to ensure compliance with JORC Code (2012) requirements for exploration results for the North Isa Project in Qld.

Appendix 1: Drill Hole Data – Lady Agnes Prospect

Hole ID	Easting	Northing	Azimuth	Dip	From (m)	To (m)	Interval (m)	Cu (ppm)	Cu (%)	Au (g/t)	Cu/Au Cu %
LARC22-01	342,369	7,742,264	255	-60	0	2	2	1100	0.11	0.07	
LARC22-01					5	6	1	1320	0.13	0.96	
LARC22-01					10	20	10	4969	0.50	0.06	0.51
Including					13	14	1	10800	1.08	0.02	1.08
LARC22-01					26	27	1	1200	0.12	0.1	
LARC22-01					33	40	7	2783	0.28	0.02	
LARC22-01					44	45	1	1030	0.10	0.03	
LARC22-01					46	49	3	1213	0.12	0.02	
LARC22-01					59	62	3	1678	0.17	0.15	
LARC22-01					63	67	4	1913	0.19	0.065	
LARC22-01					68	78	10	1966	0.20	0.036	
LARC22-01					79	83	4	1883	0.19	0.033	
LARC22-01					85	102	17	6822	0.68	0.24	0.73
Including					87	95	8	10738	1.07	0.36	1.15
LARC22-01					107	112	5	3418	0.34	0.13	
LARC22-01					113	114	1	1130	0.11	0.05	
LARC22-01					119	121	2	2990	0.30	0.035	
LARC22-01					133	139	6	3935	0.39	0.29	0.45
Including					137	139	2	10350	1.04	0.9	1.22
LARC22-01					141	142	1	1980	0.20	0.1	
LARC22-01					152	153	1	1290	0.13	0.04	
LARC22-01					162	165	3	2127	0.21	0.023	
LARC22-01					166	167	1	1240	0.12	0.02	
LARC22-01					173	175	2	1680	0.17	0.045	
LARC22-01					178	181	3	1385	0.14	0.005	
LARC22-02	342,420	7,742,269	255	-60	23	24	1	1050	0.11	0.04	
LARC22-02					63	64	1	1110	0.11	0.04	
LARC22-02					69	71	2	6235	0.62	0.19	
LARC22-02					74	75	1	1970	0.20	0.17	
LARC22-02					81	82	1	1080	0.11	0.03	
LARC22-02					84	87	3	4197	0.42	0.097	
LARC22-02					91	92	1	1070	0.11	0.04	
LARC22-02					94	101	7	2866	0.29	0.15	
LARC22-02					118	148	30	5103	0.51	0.06	0.52
Including					123	124	1	12400	1.24	0.14	1.27
Including					125	130	5	11600	1.16	0.13	1.19
LARC22-02					149	159	10	1254	0.13	0.03	
LARC22-02					161	162	1	1030	0.10	0.03	
LARC22-02					169	170	1	1020	0.10	0.03	
LARC22-02					171	178	7	1329	0.13	0.03	
LARC22-02					216	250	34	6644	0.66	0.12	0.69
Including					228	229	1	10450	1.05	0.16	1.08
Including					235	236	1	11050	1.11	0.14	1.13
Including					237	243	6	14336	1.43	0.24	1.48
Including					239	240	1	21200	2.12	0.28	2.18
LARC22-02					252	267	15	3092	0.31	0.04	
LARC22-03	342,311	7,742,114	20	-60	20	36	16	2345	0.23	-0.005	
LARC22-03					132	144	12	1070	0.11	0.01	
LARC22-03					156	160	4	1370	0.14	0.02	
LARC22-03					164	208	44	5382	0.54	0.12	0.56
Including					200	204	4	12800	1.28	0.16	1.31
LARC22-03					216	220	4	2780	0.28	0.94	
LARC22-04	342,374	7,742,314	255	-60	152	160	8	1035	0.10	0.02	
LARC22-04					164	180	16	1920	0.19	0.04	
LARC22-05	342,342	7,742,342	180	-60	88	92	4	1210	0.12	0.31	
LARC22-05					108	112	4	1280	0.13	0.15	
LARC22-05					120	124	4	1470	0.15	0.01	
LARC22-05					156	180	24	1432	0.14	0.02	
LARC22-05					192	200	8	1175	0.12	0.02	
LARC22-05					216	224	8	1520	0.15	0.05	
LARC22-05					228	236	8	1640	0.16	0.03	
LARC22-05					240	244	4	1310	0.13	0.14	
LARC22-05					248	260	12	1450	0.15	0.03	
LARC22-05					272	280	8	1445	0.14	0.035	

Note:

LARC22 01 - 02 1m sampling, 1000ppm Cu cutoff
LARC22 03 - 05 4m composite sampling, 1000ppm Cu cutoff
LARC22 - 03 4m composite samples from 151m - 216m have been sent for 1m assaying
Coordinate reference system used GD94

JORC Code, 2012 Edition – Table 1:

Section 1 Sampling Techniques and Data

(Criteria in this section apply to all succeeding sections)

Criteria	JORC Code explanation	Commentary
<p>Sampling techniques</p>	<ul style="list-style-type: none"> • Nature and quality of sampling (eg cut channels, random chips, or specific specialised industry standard measurement tools appropriate to the minerals under investigation, such as down hole gamma sondes, or handheld XRF instruments, etc). These examples should not be taken as limiting the broad meaning of sampling. • Include reference to measures taken to ensure sample representivity and the appropriate calibration of any measurement tools or systems used. • Aspects of the determination of mineralisation that are Material to the Public Report. • In cases where 'industry standard' work has been done this would be relatively simple (eg 'reverse circulation drilling was used to obtain 1 m samples from which 3 kg was pulverised to produce a 30 g charge for fire assay'). In other cases more explanation may be required, such as where there is coarse gold that has inherent sampling problems. Unusual commodities or mineralisation types (eg submarine nodules) may warrant disclosure of detailed information. 	<p>Drill program</p> <ul style="list-style-type: none"> • The Lady Agnes prospect has been drilled and sampled by 135mm diameter, reverse circulation (RC) methods with holes on variable spacings consistent with early-stage reconnaissance exploration. The prospects have been drilled by Renegade Exploration Limited and includes 5 holes for a total of 1,234m of drilling. The drilling was completed by Mt Isa-based drilling contractors Tulla Drilling Pty Ltd. <p>Sample Representativity</p> <ul style="list-style-type: none"> • Initial drilling was undertaken to identify near surface mineralisation indicated by the historic Lady Agnes mine and historic drilling at depth. In general, most holes are drilled perpendicular to the interpreted strike of the mineralised body and oriented towards the dip the target mineralised horizon/structure. None-the-less, downhole widths will in most instances not represent true widths. • RC drilling techniques returned samples through a fully enclosed cyclone setup with sample return routinely collected in 1m intervals approximating 20 - 40kg of sample. 1m interval RC samples were homogenized and collected by a static rotary splitter to produce a representative 2- 3kg sub-sample (~12.5% of sample weight); • An Olympus Vanta portable XRF was available at the drill rig to aid geological interpretation. No XRF results are reported for drilling. • RC samples were submitted to ALS in Mount Isa, Qld. Assay results are presented in this document.
<p>Drilling techniques</p>	<ul style="list-style-type: none"> • Drill type (e.g., core, reverse circulation, open-hole hammer, rotary air blast, auger, Bangka, sonic, etc) and details (e.g., core diameter, triple or standard tube, depth of diamond tails, face-sampling bit or other type, whether core is oriented and if so, by what method, etc). 	<p>The drilling was completed using a 685 Schramm Reverse Circulation drill rig, with maximum air of 1,000psi and 1150cfm.</p> <ul style="list-style-type: none"> • Drilling diameter is 135mm diameter RC hammer. • Face sampling bits are used. • RC holes range from 201m to 297m, deep, averaging 246.8m.

Criteria	JORC Code explanation	Commentary
Drill sample recovery	<ul style="list-style-type: none"> • Method of recording and assessing core and chip sample recoveries and results assessed. • Measures taken to maximise sample recovery and ensure representative nature of the samples. • Whether a relationship exists between sample recovery and grade and whether sample bias may have occurred due to preferential loss/gain of fine/coarse material. 	<ul style="list-style-type: none"> • Sample recovery, moisture content and contamination are noted in a HP computer by Company personnel. • Tulla drill contractors and Company personnel monitor sample recovery, size and moisture, making appropriate adjustments as required to maintain sample quality, such as using high-pressure compressed air to keep samples dry. With the exception of a small number of samples in LARC22 – 05, all drill samples were dry. • A cone splitter is mounted beneath the cyclone on the rig and produced a 2 – 4 kg sample split from each metre of drilling ensuring a representative sample was collected.
		<ul style="list-style-type: none"> • The cyclone and cone splitter were cleaned as necessary to minimise contamination. • No significant sample loss, contamination or bias has been noted in the current drilling.
Logging	<ul style="list-style-type: none"> • Whether core and chip samples have been geologically and geotechnically logged to a level of detail to support appropriate Mineral Resource estimation, mining studies and metallurgical studies. • Whether logging is qualitative or quantitative in nature. Core (or costean, channel, etc) photography. • The total length and percentage of the relevant intersections logged. 	<ul style="list-style-type: none"> • Geological logging has been routinely undertaken by suitably qualified geologists on all RC holes along the entire length of the hole recording lithology, mineralogy, veining, alteration, weathering, structure, and other sample features as appropriate to the style of deposit. Observations were recorded in a HP computer appropriate to the drilling and sample return method and is quantitative, based on visual field estimates. • Observations were recorded appropriate to the sample type based on visual field estimates of sulphide content and sulphide mineral species. • During the logging process Company geologists routinely retained one metre representative samples (stored in chip trays) for future reference. The RC chip trays have been photographed, with photographs stored on multiple electronic devices. • Every metre sample of RC drilling is logged by the geologist on site. For each metre RC chips are sieved to remove fines and washed clean before logging by a geologist. • Observations were recorded appropriate to the sample type based on visual field estimates.

Criteria	JORC Code explanation	Commentary
Sub-sampling techniques and sample preparation	<ul style="list-style-type: none"> • If core, whether cut or sawn and whether quarter, half or all core taken. • If non-core, whether riffled, tube sampled, rotary split, etc and whether sampled wet or dry. • For all sample types, the nature, quality and appropriateness of the sample preparation technique. • Quality control procedures adopted for all sub-sampling stages to maximise representivity of samples. • Measures taken to ensure that the sampling is representative of the in-situ material collected, including for instance results for field duplicate/second-half sampling. • Whether sample sizes are appropriate to the grain size of the material being sampled. 	<ul style="list-style-type: none"> • Significant 1.0m assays results for drill hole LARC22 – 01 and 02 are reported above. 4.0m composite sample assay have been received, with significant results recorded above. • RC samples were collected at 1m intervals in prenumbered calico bags via the cone splitter underneath the cyclone on the drill rig. • LARC22 – 01 and LARC22 – 02 have been sent for assay on the basis of 1m samples over the entire hole. • LARC22 – 03 to LARC22 – 05 have been assayed on the basis of 4m composite samples (collected from the bulk sample using a sample spear) over the entire hole. • 1m samples for laboratory analysis are placed inside prenumbered calico bags, then placed in labelled polyweave bags for transport to ALS Mount Isa by Renegade personnel. • Sample preparation is undertaken at the laboratory. • RC samples are prepared at ALS in Mount Isa, use method PUL23 samples to 3kg and are pulverised to 85% passing 75 microns. • Company field QC procedure include the use of certified reference standards (1:60m), duplicates (1:60m), blanks (1:60m), interval considered appropriate for early stage exploration. High, low and medium gold and base metal standards are used.
		<ul style="list-style-type: none"> • ALS Laboratories introduce QAQC samples and complete duplicate check assays on a routine basis • Duplicates are collected by Renegade personnel with the use of a sample spear. • Field QC is checked after analysis. • Sample size is considered appropriate to the material sampled. • The remaining 'reject' one metre drill sample (weighing ~20 - 40kg) is placed in plastic bags and left at the drill site laid out in sequence from the top of the hole to the end of the hole until assay results have been received. A sample is sieved from the reject material and retained in chip trays for geological logging and future reference and stored at the company's offices in Mount Isa.

Criteria	JORC Code explanation	Commentary
Quality of assay data and laboratory tests	<ul style="list-style-type: none"> The nature, quality and appropriateness of the assaying and laboratory procedures used and whether the technique is considered partial or total. For geophysical tools, spectrometers, handheld XRF instruments, etc, the parameters used in determining the analysis including instrument make and model, reading times, calibrations factors applied and their derivation, etc. Nature of quality control procedures adopted (eg standards, blanks, duplicates, external laboratory checks) and whether acceptable levels of accuracy (ie lack of bias) and precision have been established. 	<ul style="list-style-type: none"> An Olympus Delta Vanta portable XRF is available at the drill rig to aid geological interpretation. No XRF results are reported for drilling. RC samples have been analysed by ALS, in Mount Isa, Qld. A 2 - 4kg sample was pulverised to produce a 30g charge for fire assay and ICP-AES (ICP22) finish for gold assay. A four-acid digest was used for digestion with an ICP finish (ME-ICP61a) to assay for Ag, Al, As, Ba, Be, Bi, Ca, Cd, Co, Cr, Cu, Fe, Ga, K, La, Mg, Mn, Mo, Na, Ni, P, Pb, S, Sb, Sc, Sr, Th, Ti, U, V, W, Zn The Lab utilises standard internal quality control measures including the use of internal Standards, Control Blanks and duplicates/repeats at a rate of 1 in 30 samples.
Verification of sampling and assaying	<ul style="list-style-type: none"> The verification of significant intersections by either independent or alternative company personnel. The use of twinned holes. Documentation of primary data, data entry procedures, data verification, data storage (physical and electronic) protocols. Discuss any adjustment to assay data. 	<ul style="list-style-type: none"> A complete record of logging, sampling and assays will be stored within a Database including digital assay sheets obtained from ALS. No specific twinning program has been conducted, given the early-stage of the project. The assay data will be validated against the logging for all RC holes and directly input onto electronic spread sheets and validated by the contract database manager. All data is digitally recorded There have been no adjustments to the data.
Location of data points	<ul style="list-style-type: none"> Accuracy and quality of surveys used to locate drill holes (collar and down-hole surveys), trenches, mine workings and other locations used in Mineral Resource estimation. Specification of the grid system used. Quality and adequacy of topographic control. 	<ul style="list-style-type: none"> A hand-held GPS has been used to determine all collar locations at this stage. The grid system is MGA_GDA94, zone 54 for easting, northing and RL. Down hole surveying is routinely employed through the drilling campaign. All RC holes were downhole surveyed at 50m intervals by Reflex EZ- TRAC xtf tool operated by the drillers.
		<ul style="list-style-type: none"> At this stage the RL of the collar is taken from the handheld GPS, this will be corrected with the local topographic surface (SRTM 1m topographic data) will be used to generate the RL of most of the collars, given the large errors obtained by GPS ($\pm 10m$). Zone 54.
Data spacing and distribution	<ul style="list-style-type: none"> Data spacing for reporting of Exploration Results. 	<ul style="list-style-type: none"> Drill spacing is determined by the stage of exploration of the prospect. The prospect has been drilled with a wide drill hole spacing required at this stage to determine the merit of the prospect and produce a reliable interval. 4m compositing has been utilised for LARC22 – 03 .to LARC22 – 05.

Criteria	JORC Code explanation	Commentary
	Whether the data spacing and distribution is sufficient to establish the degree of geological and grade continuity appropriate for the Mineral Resource and Ore Reserve estimation procedure(s) and classifications applied.	<ul style="list-style-type: none"> The drillhole spacing is appropriate for early-stage exploration only, and not considered sufficient for Resource or Reserve estimation. <p>The true thickness, grade continuity along strike and down dip is unknown at this time and will require more detailed drilling.</p>
	Whether sample compositing has been applied.	<ul style="list-style-type: none"> 4m compositing has been utilised for LARC22 – 03 to LARC22 – 05.
Orientation of data in relation to geological structure	<ul style="list-style-type: none"> Whether the orientation of sampling achieves unbiased sampling of possible structures and the extent to which this is known, considering the deposit type. If the relationship between the drilling orientation and the orientation of key mineralised structures is considered to have introduced a sampling bias, this should be assessed and reported if material. 	<ul style="list-style-type: none"> The drilling is oriented as best as possible to perpendicular to the structure/geology containing or controlling the observed mineralisation based on projections from surface outcrops and guided by FLEM response. Generally, the orientation is considered appropriate. No sampling bias is considered to have been introduced, however the geological model is still evolving, and localised orientation of mineralisation may vary along strike.
Sample security	<ul style="list-style-type: none"> The measures taken to ensure sample security. 	<ul style="list-style-type: none"> Sample security adopted by Renegade was based on responsibility and documentation of site personal with the appropriate experience and knowledge to maintain sample chain of custody protocols from site to lab.
Audits or reviews	<ul style="list-style-type: none"> The results of any audits or reviews of sampling techniques and data. 	<ul style="list-style-type: none"> No audits or reviews undertaken.

Section 2 Reporting of Exploration Results

(Criteria listed in the preceding section also apply to this section.)

Criteria	JORC Code explanation	Commentary
Mineral tenement and land tenure status	<ul style="list-style-type: none"> Type, reference name/number, location and ownership including agreements or material issues with third parties such as joint ventures, partnerships, overriding royalties, native title interests, historical sites, wilderness or national park and environmental settings. 	<ul style="list-style-type: none"> The North Isa Project is approximately 30 km north of Mount Isa. The drilling reported here took place at the Lady Agnes prospect which are located within EPM 27508. The tenement EPM 27508 referred to in this release is held by Burke Copper Pty Ltd (100%) with Renegade Exploration (QLD) Pty Ltd (A 100% wholly owned subsidiary of Renegade Exploration Limited) earning a 75% interest.
	<ul style="list-style-type: none"> The security of the tenure held at the time of reporting along with any known impediments to obtaining a licence to operate in the area. 	<ul style="list-style-type: none"> The tenements are secure under Qld legislation.

Criteria	JORC Code explanation	Commentary
Exploration done by other parties	<ul style="list-style-type: none"> Acknowledgment and appraisal of exploration by other parties. 	<ul style="list-style-type: none"> The historical tenure reports indicated that several companies have explored the project area over the last 60 years. Exploration has mainly consisted of geochemical sampling of rock and soil. Geological mapping and acquisition of airborne magnetics. Limited historical drilling is recorded within the Qld Government database "GeoResGlobe". At the Lady Agnes prospect, an historic shaft was sunk to mine oxide copper ores. Follow up exploration and deep diamond drilling was undertaken by Mt Isa Mining Limited in the early 1980's. The Company has this information and has reported this to the ASX. First pass geochemical sampling (rock chip) was conducted by Renegade under the current tenure in 2022. The review of historical drilling, historical EM and recent work resulted in the identification of preliminary drill targets at Lady Agnes.
Geology	<ul style="list-style-type: none"> Deposit type, geological setting and style of mineralisation. 	<ul style="list-style-type: none"> The North Isa Project is located within the Mt Isa Inlier. The EPM 27508 tenement straddles a major geological structure well known as the Western Fault The Lady Agnes prospect is centred on the historic Lady Agnes mine, defining a strongly mineralised zone of stratabound copper- gold which strikes over a length of 500m. The mineralisation is within the Breakaway Shale close to the contact with the underlying Eastern Creek Volcanics. Conceptually, the mineralisation occurs within a prospective sequence of the Breakaway Shale, with locally derived oxidised fluids focussed along the Western Fault between the ECV and depositing metals into the reducing Breakaway Shales. At surface the mineralisation is associated with calcite lodes and quartz veins hosting copper carbonates (malachite and azurite) and chalcocite. The adopted exploration model for the Isa North tenement targets a Sedex model similar to the Mt Isa deposits.

Criteria	JORC Code explanation	Commentary
Drill hole Information	<ul style="list-style-type: none"> • A summary of all information material to the understanding of the exploration results including a tabulation of the following information for all Material drill holes: <ul style="list-style-type: none"> ➢ easting and northing of the drill hole collar ➢ elevation or RL (Reduced Level – elevation above sea level in metres) of the drill hole collar ➢ dip and azimuth of the hole ➢ down hole length and interception depth ➢ hole length. <p>If the exclusion of this information is justified on the basis that the information is not Material and this exclusion does not detract from the understanding of the report, the Competent Person should clearly explain why this is the case.</p>	<ul style="list-style-type: none"> • See Appendix 1 of this release
Data aggregation methods	<ul style="list-style-type: none"> • In reporting Exploration Results, weighting averaging techniques, maximum and/or minimum grade truncations (eg cutting of high grades) and cut-off grades are usually Material and should be stated. • Where aggregate intercepts incorporate short lengths of high-grade results and longer lengths of low-grade results, the procedure used for such aggregation should be stated • and some typical examples of such aggregations should be shown in detail 	<ul style="list-style-type: none"> • Assay results are reported in Appendix 1 • An estimate of visual sulphide content is not included in this release. Sulphide content is recorded in the drill logging.
Data aggregation methods Relationship between mineralisation widths and intercept lengths	<p>The assumptions used for any reporting of metal equivalent values should be clearly stated.</p> <ul style="list-style-type: none"> • These relationships are particularly important in the reporting of Exploration Results. • If the geometry of the mineralisation with respect to the drill hole angle is known, its nature should be reported. • If it is not known and only the down hole lengths are reported, there should be a clear statement to this effect (e.g., 'down hole length, true width not known'). 	<ul style="list-style-type: none"> • Metal equivalents have not been reported <ul style="list-style-type: none"> • The azimuth and dip data for all holes is presented in Appendix 1. All drill holes started at - 60° dip, approximating a dip on the interpretation of steeply dipping mineralised horizon and approximately perpendicular to the strike of the mapped mineralised zone. • The nature and dip of the mineralisation are still being evaluated. • True widths and downhole widths are not reported in this release.
Diagrams	<ul style="list-style-type: none"> • Appropriate maps and sections (with scales) and tabulations of intercepts should be included for any significant discovery being reported These should include, but not be limited to a plan view of drill hole collar 	<ul style="list-style-type: none"> • A collar plan of all collar locations is provided in the main body of this announcement

Criteria	JORC Code explanation	Commentary
	locations and appropriate sectional views.	
Balanced reporting	<ul style="list-style-type: none"> Where comprehensive reporting of all Exploration Results is not practicable, representative reporting of both low and high grades and/or widths should be practiced avoiding misleading reporting of Exploration Results. 	
Other substantive exploration data	<ul style="list-style-type: none"> Other exploration data, if meaningful and material, should be reported including (but not limited to): geological observations; geophysical survey results; geochemical survey results; bulk samples – size and method of treatment; metallurgical test results; bulk density, groundwater, geotechnical and rock characteristics; potential deleterious or contaminating substances. 	<ul style="list-style-type: none"> Considerable historical work was completed with mapping, sampling and geophysics. This work needs further review. Assay results from the drilling will be reported on receipt of the results
Further work	<ul style="list-style-type: none"> The nature and scale of planned further work (e.g., tests for lateral extensions or depth extensions or large-scale step-out drilling). 	<ul style="list-style-type: none"> Early-stage exploration and follow-up of identified Cu and Au anomalies including additional interpretation of geophysical data, acquisition of new geophysical data, reviews and assessments of regional targets, and infill geochemical sampling of ranked anomalies in preparation for future drill testing. Following receipt of assays and interpretation of this data the Company plans to undertake additional geophysical work, including down hole EM, possible auger soil sampling followed by additional drilling.
	<ul style="list-style-type: none"> Diagrams clearly highlighting the areas of possible extensions, including the main geological interpretations and future drilling areas, provided this information is not commercially sensitive. 	