



TALISMAN MINING LTD

PO Box 1262, Subiaco WA 6904
Tel: 61 8 9380 4230 / Fax: 61 8 9382 8200
www.talismanmining.com.au

14 March 2008

The Manager
Company Announcements Office
Australian Stock Exchange

By Electronic Lodgement

PRESENTATION – IRON (MANGANESE) PROJECTS

Herein attached is a PowerPoint presentation to be delivered to brokers and investors commencing 17th March 2008 on the Company's Iron Ore exploration activities.

Yours sincerely

S. J. Elliott
Managing Director

Information in this report that relates to Exploration Results and Mineral Resources is based on information compiled by Mr Steven Elliott who is a member of the Australasian Institute of Mining and Metallurgy. Mr Steven Elliott is a full time employee of Talisman Mining Ltd and has sufficient experience which is relevant to the style of mineralisation and type of deposit under consideration and to the activity undertaken to qualify as a Competent Person as defined in the 2004 Edition of the "Australian Code for Reporting of Mineral Resources and Ore Reserves". Mr Steven Elliott consents to the inclusion in this report of the matters based on information in the form and context in which it appears.



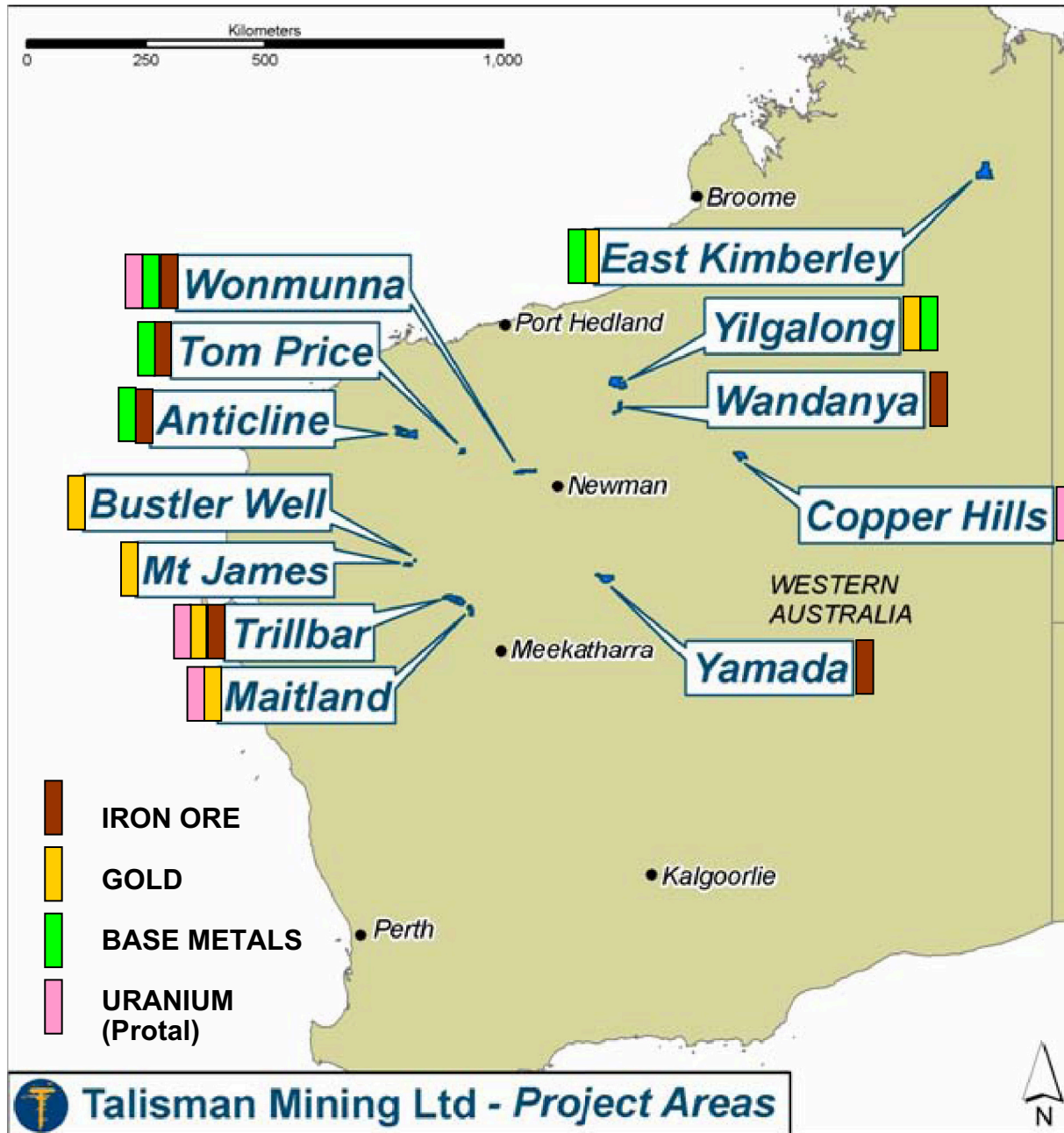
TALISMAN MINING LTD



IRON (MANGANESE) PROJECTS

Steve Elliott

Managing Director

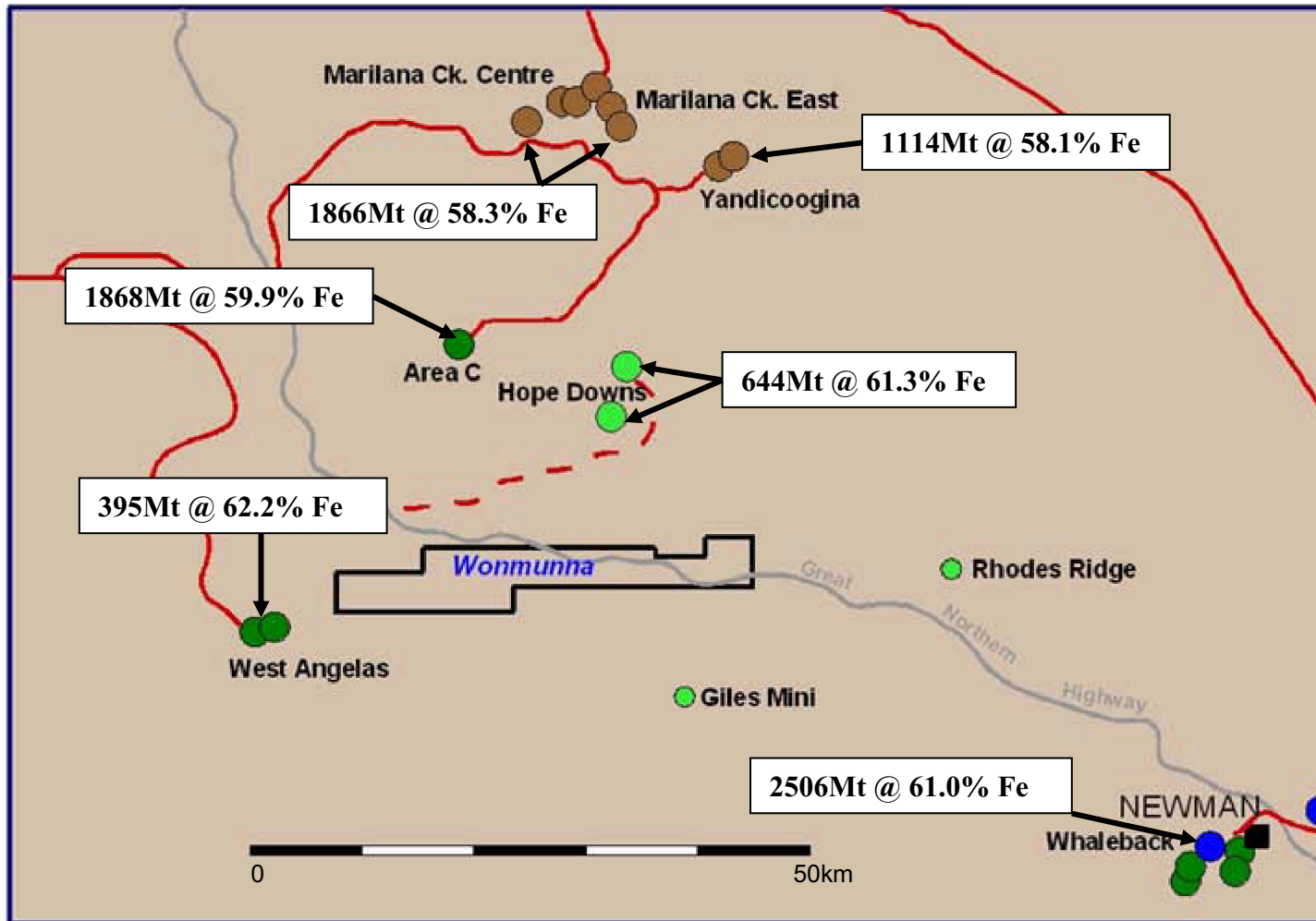


IRON - STATE OF PLAY

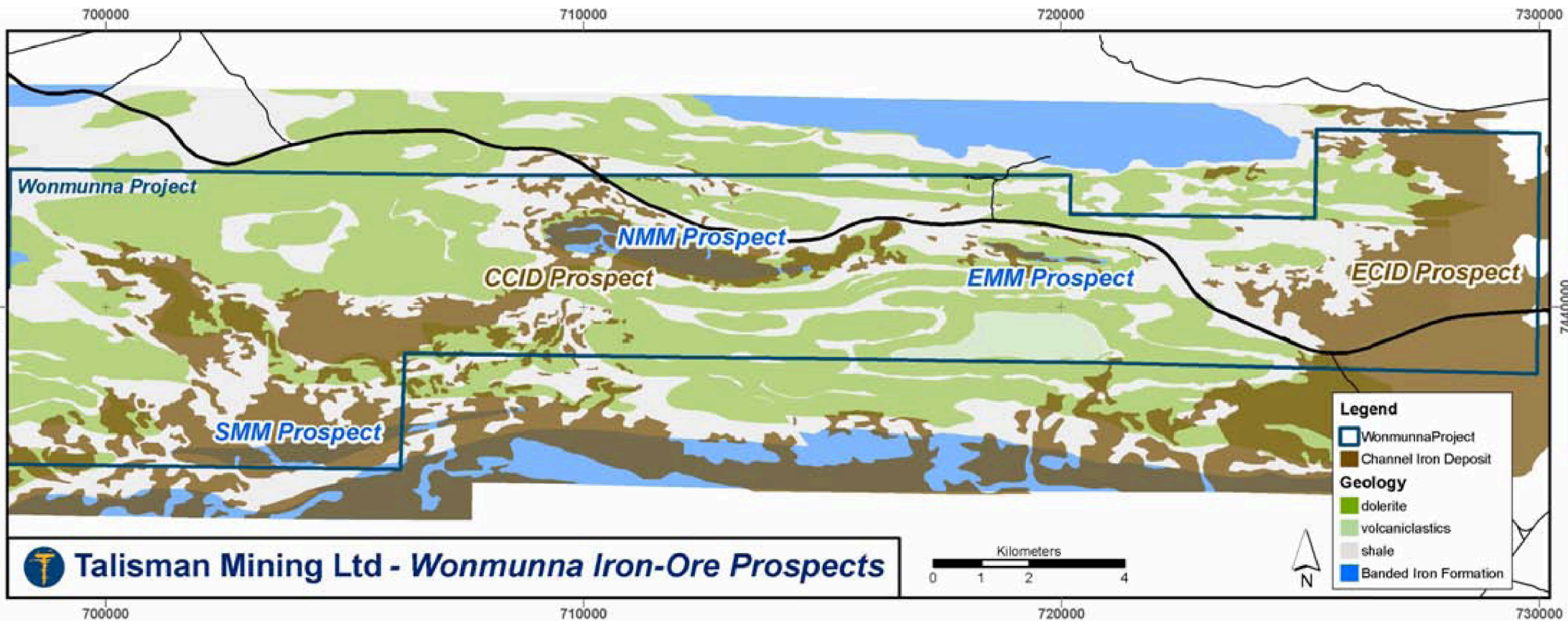
March, 2008

<i>Project</i>	<i>Prospect</i>	<u><i>Geochemical Anomalies</i></u>				<i>Drill (Best)</i>	<i>Resource</i>
		<i>Stream</i>	<i>Soil</i>	<i>Rock</i>	<i>RAB</i>		
WONMUNNA	NMM	—	—	—	—	20m @ 61.41% Fe	(Drilling commenced)
	SMM	—	—	—	—	No drilling	—
	EMM	—	—	—	—	No drilling	—
	CCID	—	—	—	—	4m @ 57.9% Fe	—
	ECID	—	—	—	—	No drilling	—
TRILLBAR	NIF	—	—	Y	—	No drilling	—
	SIF	—	—	Y	—	No drilling	—
YAMADA	Yamada	—	—	Y	—	No drilling	—
WANDANYA	Wandanya	—	—	Y	—	No drilling	—

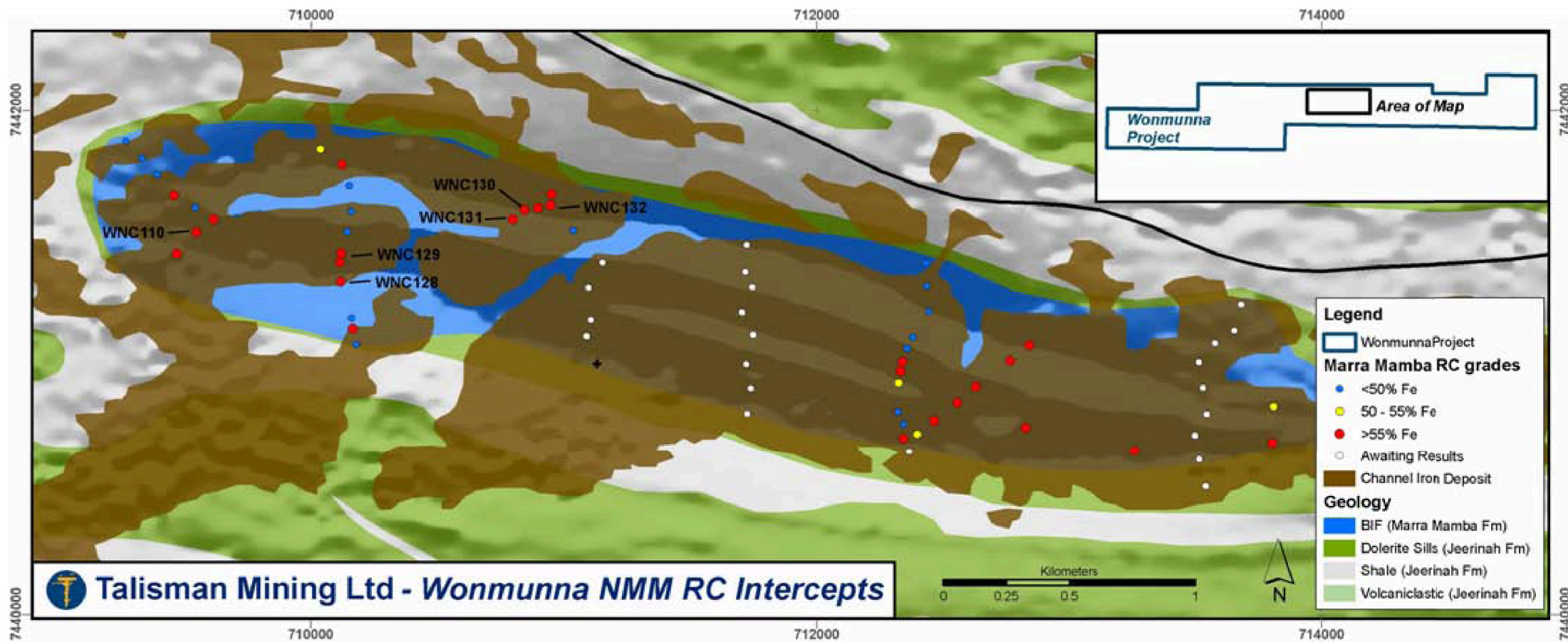
WONMUNNA



- Mine: Hematite - goethite mineralised Brockman Iron Formation.
- Mine: Channel Iron Deposit (CID)
- Mine: Hematite - goethite mineralised Marra Mamba Iron Fmn.
- Hope Downs Mine (Under construction)
- Unmined major deposit
- Existing BHP and Rio Tinto Railways
- - - Railway under construction
- Talisman Mining Ltd Wonmunna Tenement (E47/1137)



Talisman Mining Ltd - Wonmunna Iron-Ore Prospects

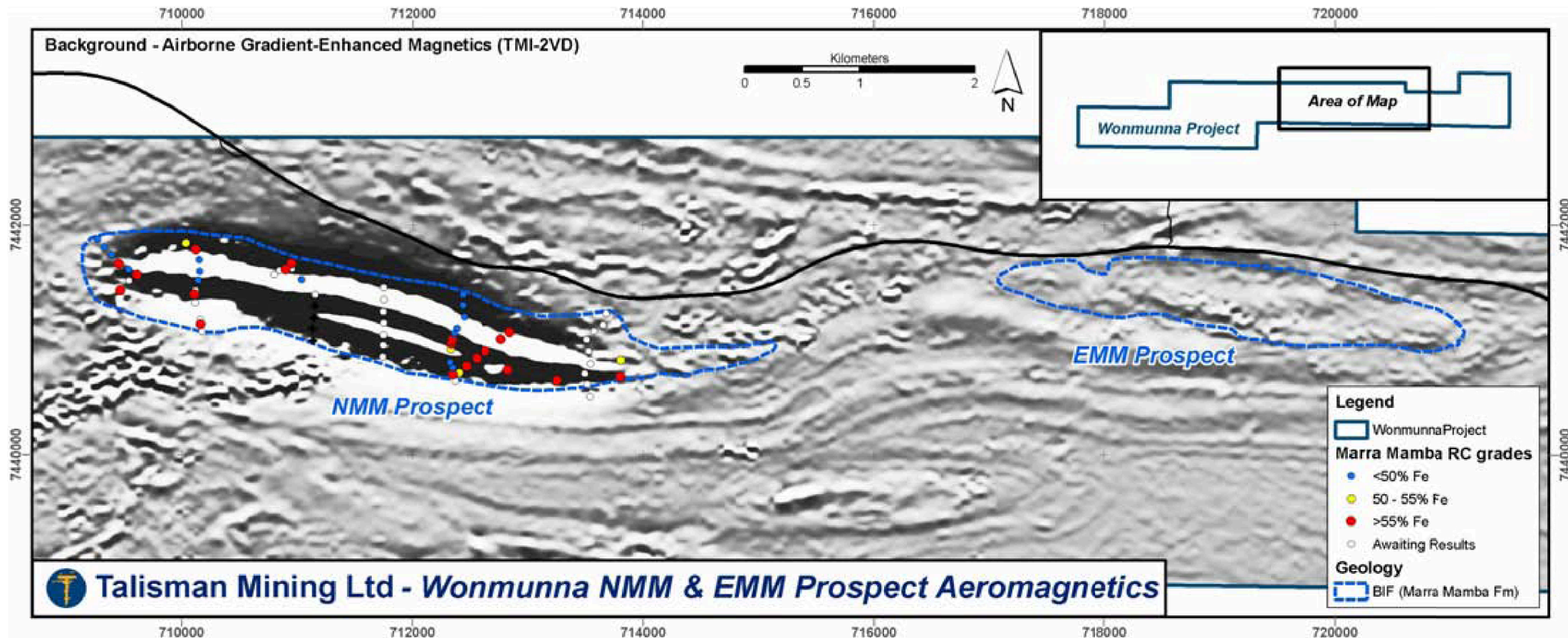
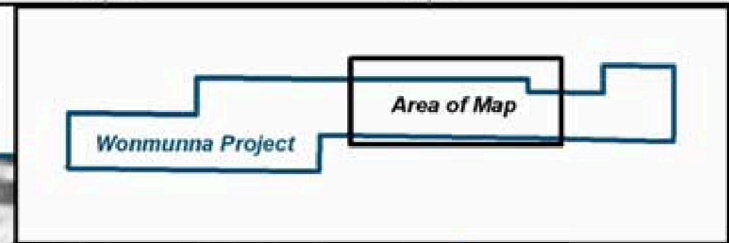




WONMUNNA: NMM Prospect – Significant Reconnaissance Drill Intercepts (to 01/03/08)

Drillhole	From (m)	To (m)	Width (m)	Fe %	SiO ₂ %	Al ₂ O ₃ %	P %	S %	LOI %
WNC061	12	16	4	58.97	4.53	1.75	0.061	0.056	9.1
WNC062	8	32	24	59.73	3.42	2.30	0.065	0.059	8.7
	8	16	8	61.28	2.66	2.09	0.061	0.062	7.35)
WNC064	20	28	8	57.49	6.18	3.04	0.059	0.066	8.5
WNC066	12	16	4	51.72	9.23	6.51	0.026	0.076	9.8
WNC067	12	48	36	58.84	5.42	3.00	0.050	0.059	7.2
	12	32	20	61.41	4.46	1.87	0.062	0.0608	5.5)
WNC096	44	48	4	58.95	2.67	2.45	0.157	0.016	9.3
WNC098	8	48	40	55.70	5.46	4.14	0.06	0.022	9.0
WNC102	12	22	10	53.97	6.83	4.94	0.087	0.034	10.3
WNC103	18	20	2	51.69	8.89	6.15	0.096	0.04	10.0
WNC107	4	30	26	51.33	9.75	6.03	0.063	0.030	10.1
WNC109	12	18	6	55.75	4.80	4.40	0.058	0.051	10.9
WNC110	20	42	22	57.97	4.54	2.25	0.077	0.014	9.7
	30	36	6	60.66	2.43	1.42	0.082	0.011	9.1)
WNC111	16	48	32	56.80	4.83	3.22	0.107	0.012	10.2
	22	24	2	60.15	2.25	2.07	0.118	0.011	9.3)
WNC128	8	32	24	54.08	7.27	4.90	0.061	0.032	9.7
WNC129	10	26	16	53.87	6.87	4.87	0.057	0.032	9.3
	18	22	4	60.64	3.01	2.23	0.065	0.0215	7.6)
WNC130	10	34	14	58.45	4.65	3.05	0.068	0.018	7.9
	14	26	12	61.38	2.74	1.81	0.073	0.016	7.1)
WNC131	12	20	8	54.74	6.30	4.15	0.069	0.035	10.3
WNC132	14	46	32	57.04	4.99	2.94	0.073	0.018	9.9
WNC134	14	48	34	52.51	8.24	6.09	0.037	0.025	9.3
	16	22	6	60.45	2.81	1.92	0.048	0.033	7.7)







Background - Airborne Gradient-Enhanced Magnetics (TMI-2VD)

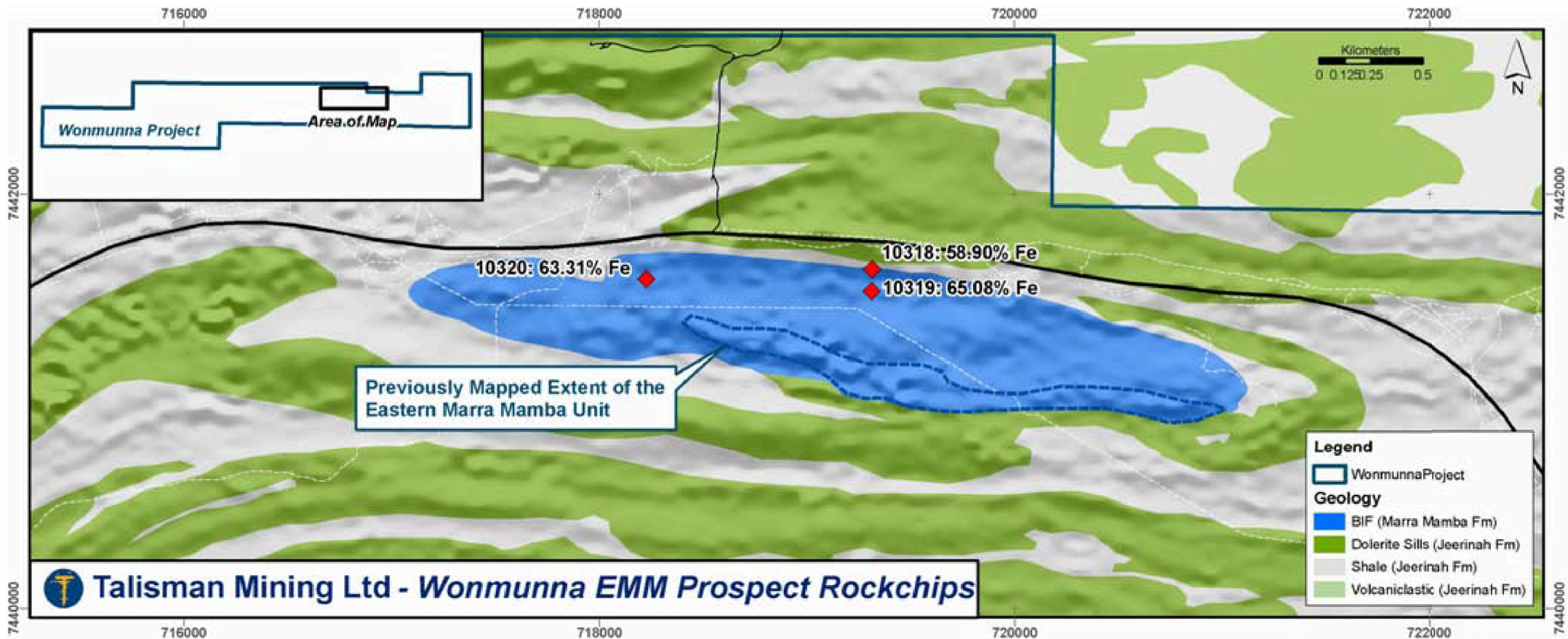


NMM Prospect

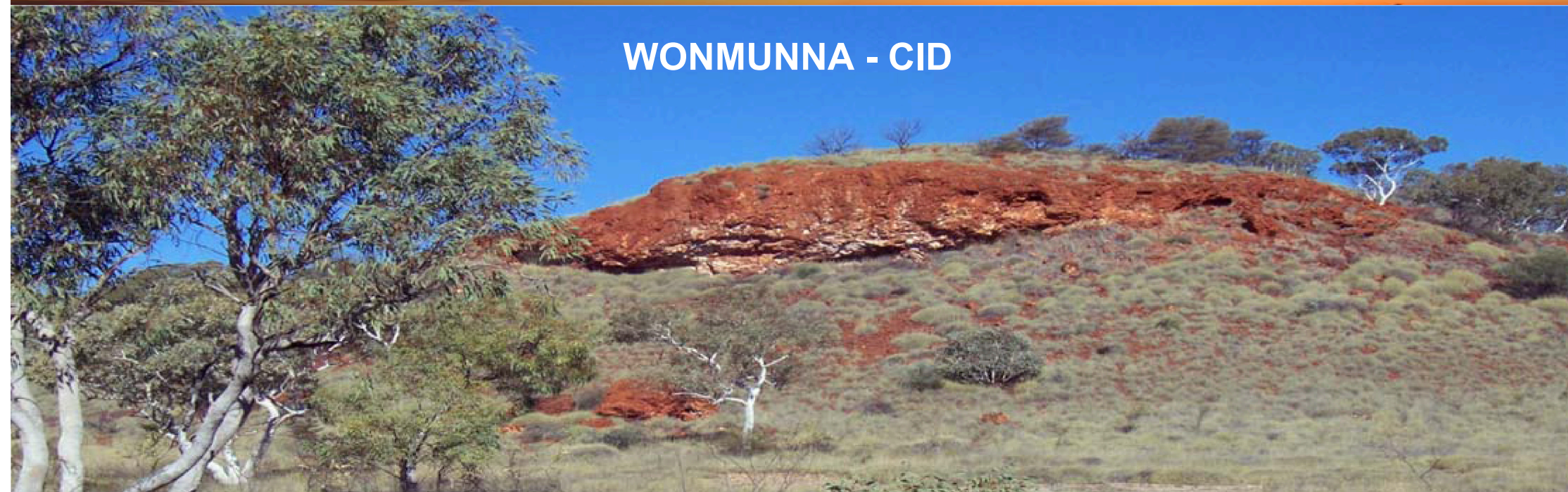
EMM Prospect

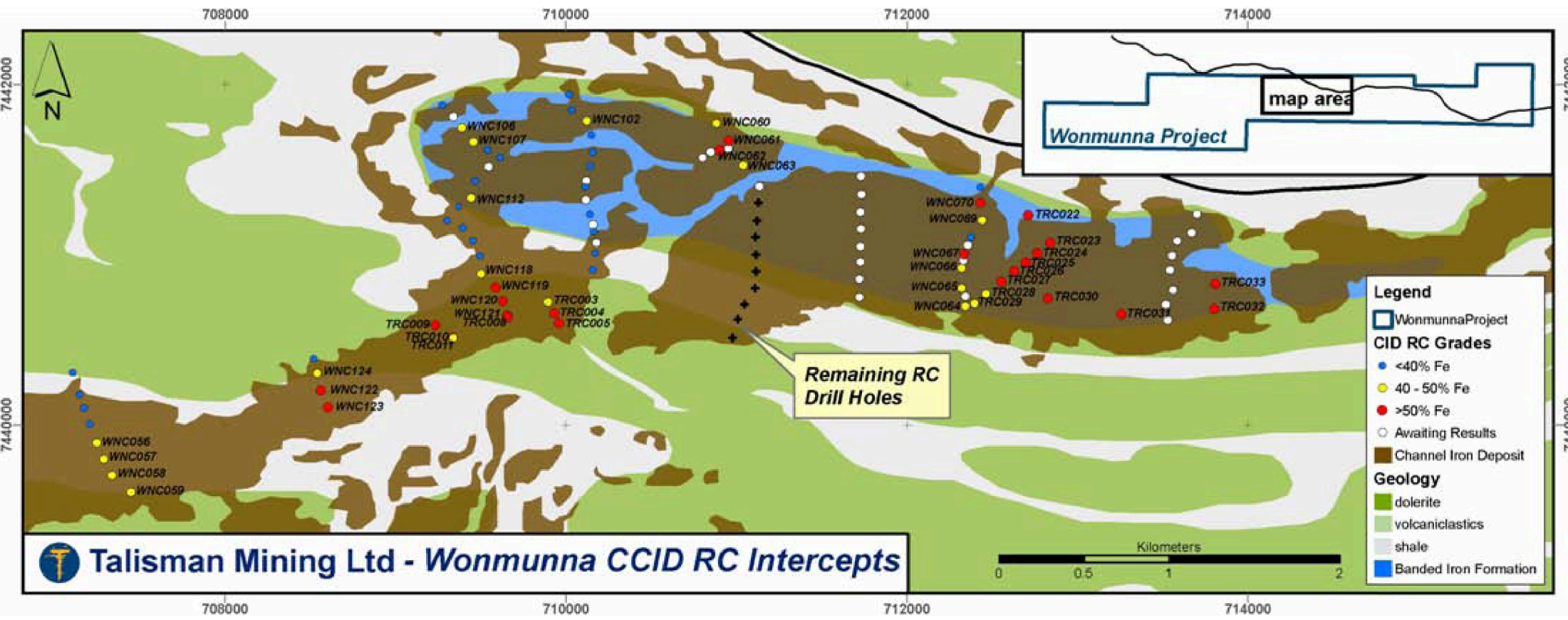
 **Talisman Mining Ltd - Wonmunna NMM & EMM Prospect Aeromagnetics**

- Legend**
-  WonmunnaProject
 - Marra Mamba RC grades**
 -  <50% Fe
 -  50 - 55% Fe
 -  >55% Fe
 -  Awaiting Results
 - Geology**
 -  BIF (Marra Mamba Fm)



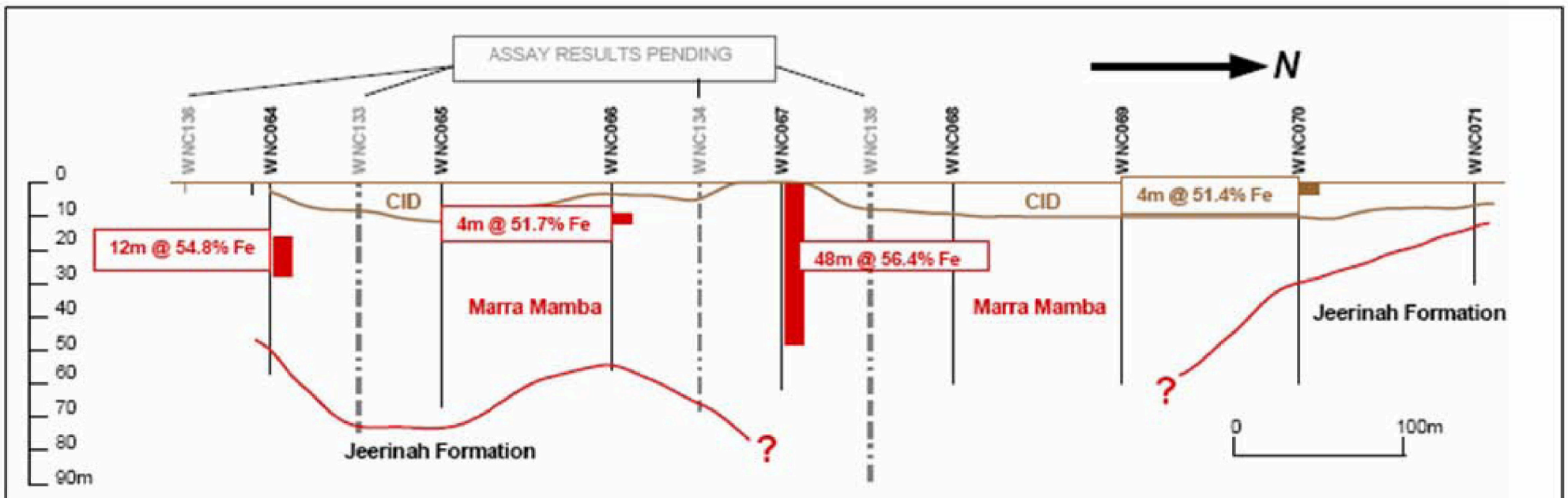
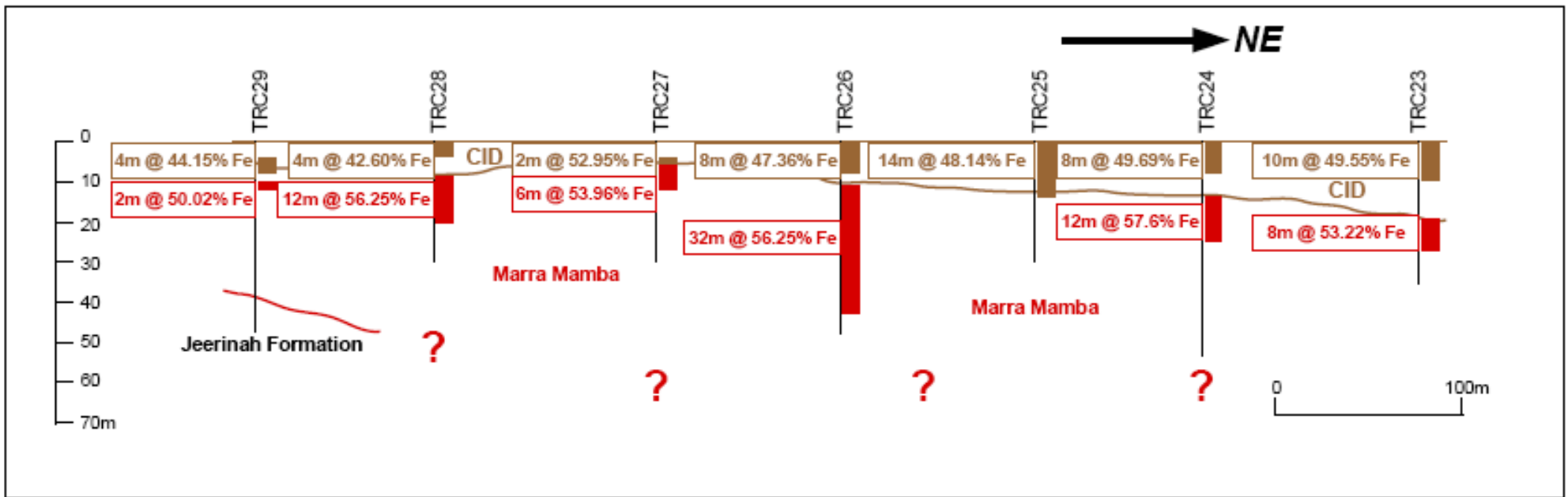
WONMUNNA - CID





WONMUNNA: CCID Prospect – Significant Reconnaissance Drill Intercepts (to 01/03/08)

Drillhole	From (m)	To (m)	Width (m)	Fe %	SiO ₂ %	Al ₂ O ₃ %	P %	S %	LOI %
WNC056	0	4	4	43.10	15.60	11.03	0.017	0.076	8.7
WNC057	0	4	4	45.10	13.29	9.58	0.017	0.080	10.4
WNC058	0	4	4	42.35	15.93	10.71	0.017	0.080	11.0
WNC059	0	4	4	43.78	12.54	11.85	0.017	0.088	11.2
WNC060	12	20	8	45.46	13.41	7.96	0.035	0.088	11.4
WNC061	0	12	12	50.40	10.91	6.33	0.042	0.095	10.4
WNC062	4	8	4	57.90	5.51	3.98	0.044	0.072	7.5
WNC063	0	4	4	42.54	17.56	14.64	0.017	0.052	4.4
WNC064	12	20	8	48.04	11.975	7.91	0.052	0.080	10.4
WNC065	8	12	4	46.78	11.78	9.69	0.048	0.088	10.5
WNC066	0	12	12	45.86	13.59	9.73	0.020	0.065	10.5
WNC067	0	12	12	49.01	10.66	8.68	0.028	0.067	9.9
WNC069	0	4	4	42.66	16.56	11.76	0.013	0.076	9.7
WNC070	0	4	4	51.38	12.95	9.58	0.017	0.036	3.4
WNC078	12	16	4	50.85	11.08	7.07	0.052	0.056	8.9
WNC102	4	8	4	40.41	15.40	14.54	0.03	0.050	8.8
WNC107	0	4	4	45.62	11.29	11.45	0.053	0.026	9.7
WNC110	6	10	4	44.82	12.14	10.87	0.032	0.044	11.0
WNC118	0	10	10	40.87	16.82	13.70	0.036	0.038	9.8
WNC119	0	6	6	46.52	13.01	10.36	0.033	0.040	8.7
WNC120	2	8	6	48.97	10.16	8.72	0.033	0.042	10.2
WNC121	0	12	12	50.91	9.01	7.60	0.033	0.042	9.8
WNC122	0	16	16	50.46	10.98	6.78	0.023	0.035	9.2
WNC123	0	6	6	48.87	10.77	8.03	0.026	0.040	10.1
WNC124	0	6	6	42.37	13.86	12.39	0.022	0.051	10.7
WNC133	0	6	6	44.43	15.00	9.19	0.035	0.025	9.9
WNC134	0	8	8	46.17	12.70	8.93	0.024	0.032	10.6
WNC135	0	8	8	41.84	16.48	11.35	0.016	0.034	10.5



WONMUNNA

Summary

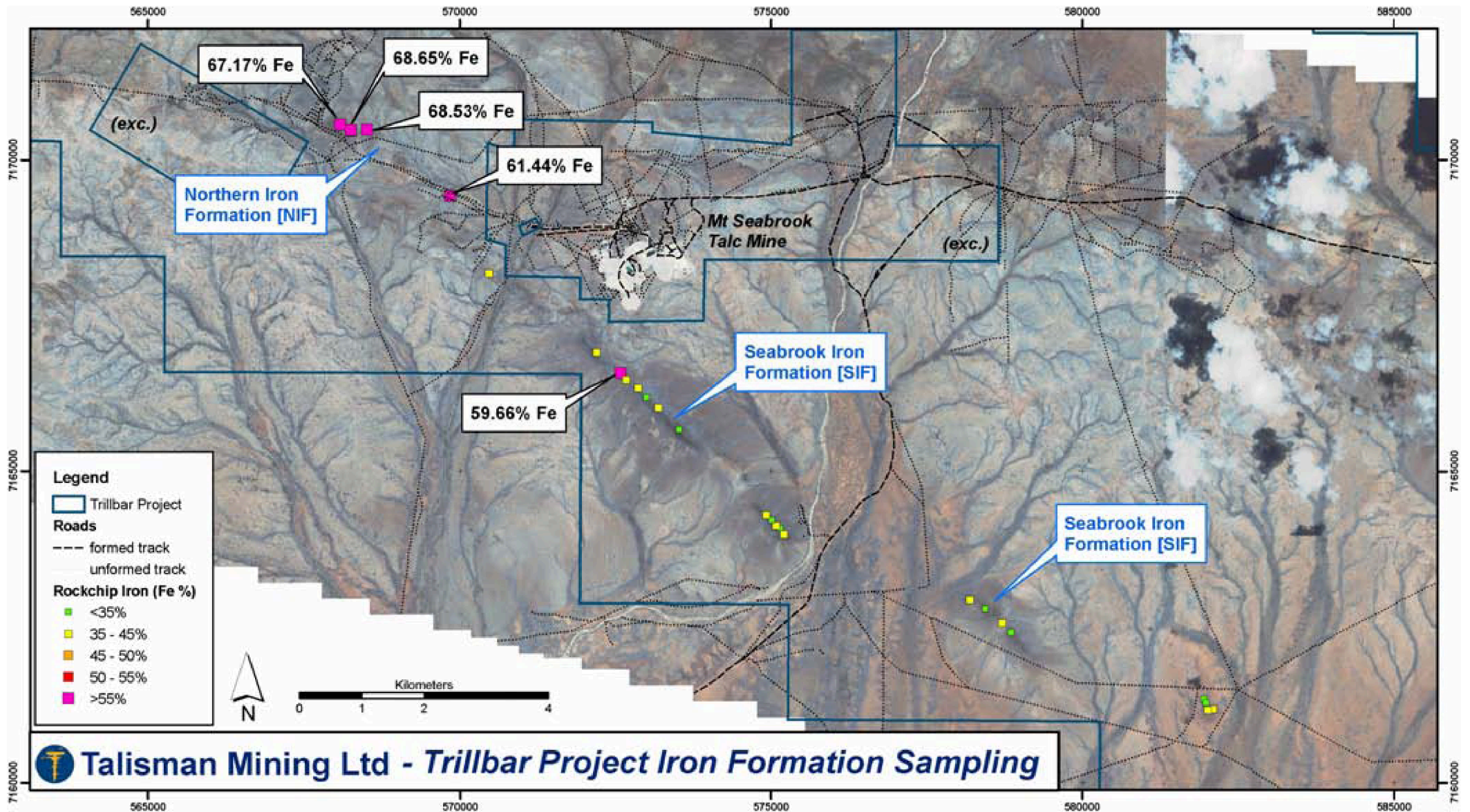
Marra Mamba

- Significant Iron intercepts at NMM prospect to 20m @ 61.41% Fe.
- Resource drilling at NMM has commenced.
- Maiden JORC NMM resource anticipated by end calendar 2008.
- Reconnaissance drilling of EMM and SMM prospects commences April, 2008.

CID

- CID mineralisation from 40 – 58% Fe, from surface, at CCID.
- Majority of CCID and ECID untested by drilling.

TRILLBAR

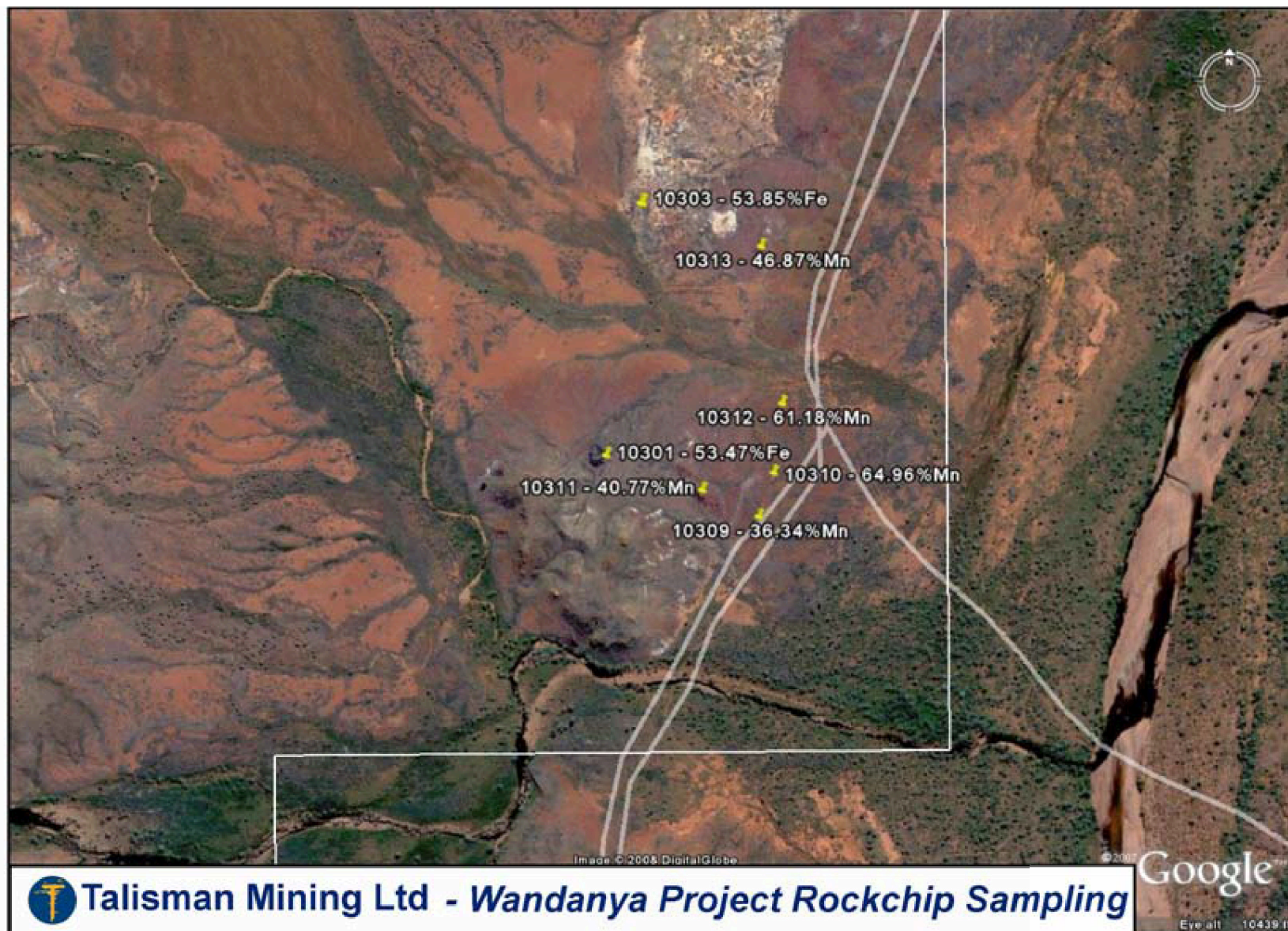


 **Talisman Mining Ltd - Trillbar Project Iron Formation Sampling**

TRILLBAR: NIF
Massive Hematite



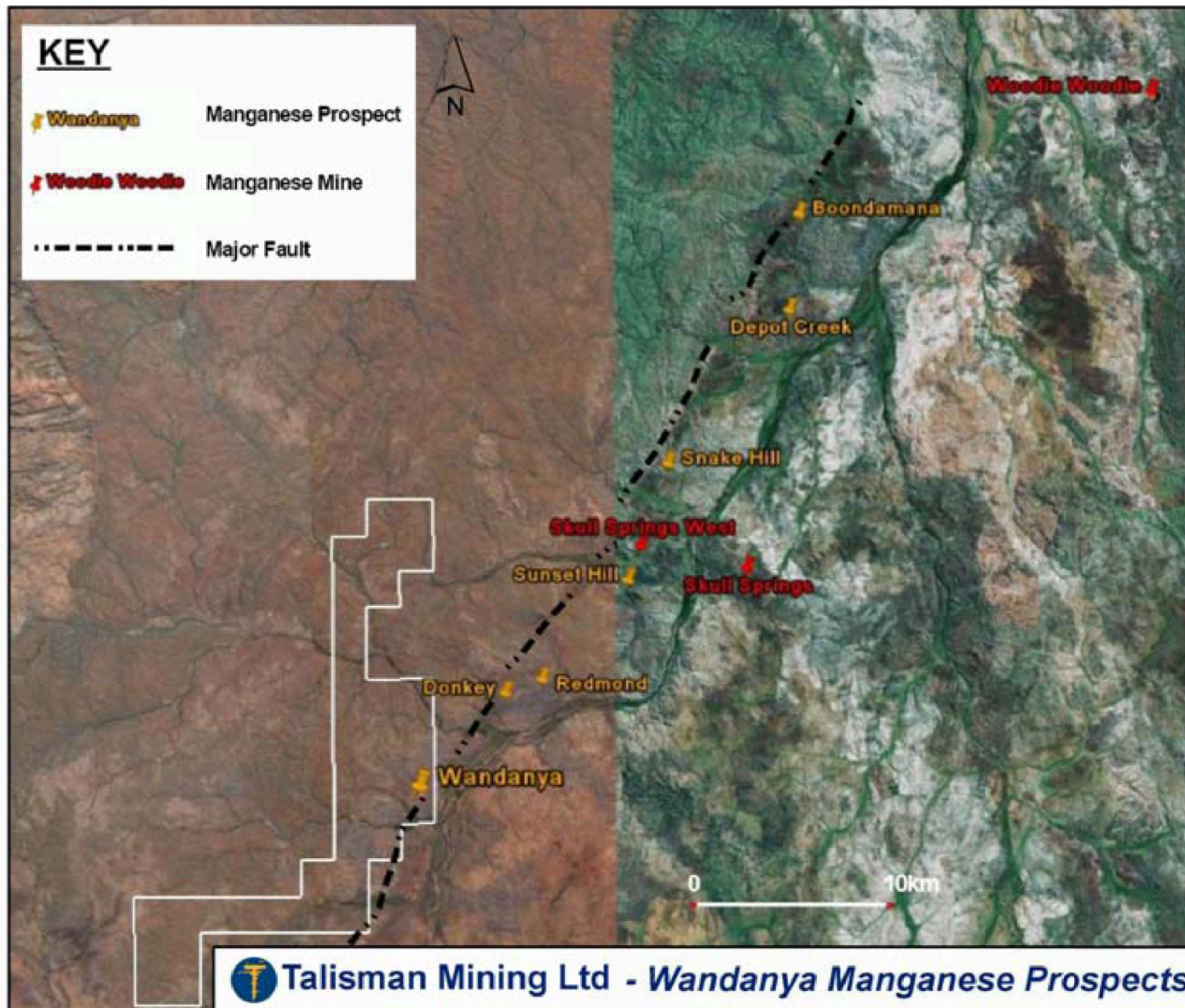
WANDANYA



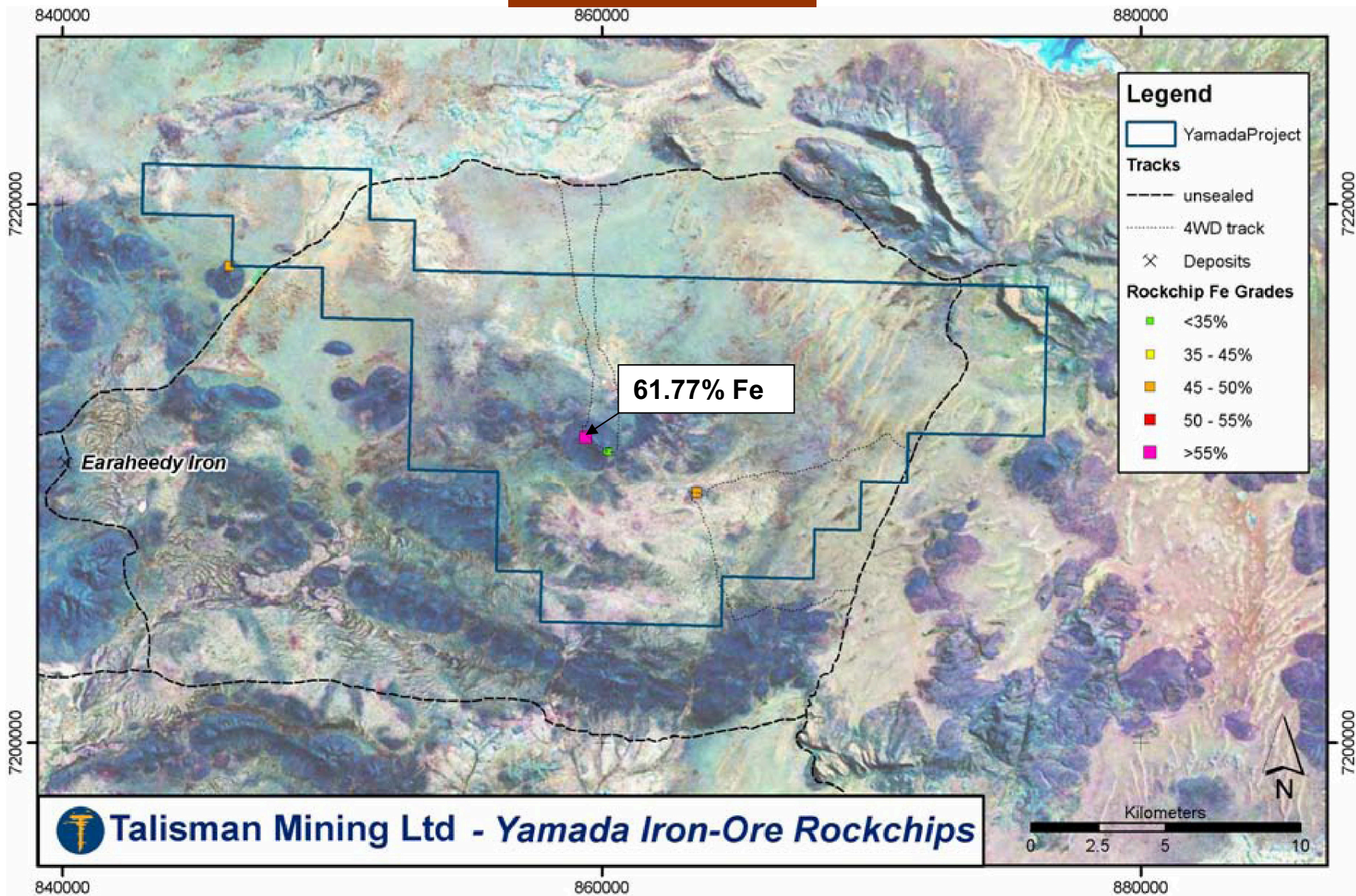
**WANDANYA:
Massive Pyrolusite**



WANDANYA



YAMADA



IRON – MANGANESE OBJECTIVES, 2008

- Wonmunna (NMM) maiden JORC resource
- Wonmunna (SMM, EMM, ECID) initial drill evaluation
 - Trillbar (NIF) maiden JORC resource
 - Wandanya initial drill evaluation
 - Yamada initial drill evaluation

CORPORATE SUMMARY

BOARD

Alan Senior– Chairman

Steve Elliott – Managing Director

Mick Bunyard – Non-executive Director

ASX CODE: TLM

CAPITAL STRUCTURE

Shares on Issue	75,055,499
Options (20c, 31/12/2010)	25,059,805
Unlisted Options	3,222,000
Capitalisation (March 7, 2008)	\$48,000,000

TOP 15

(At 4/10/2007)

S. J. Elliott	6,900,002	9.19%
Tyche Holdings Pty Ltd	4,960,000	6.61%
G. G. Walker	4,175,000	4.90%
UBS Wealth Management	2,000,000	2.66%
Metalmite Pty Ltd	1,800,000	2.40%
Redcode Pty Ltd	1,700,000	2.26%
Bitutti Pty Ltd	1,700,000	2.26%
Golbay Ltd	1,500,000	2.00%
P. R. Oost	1,262,600	1.68%
C. M. Edwards	1,144,685	1.52%
T. R. Gerard	1,100,000	1.47%
Trader 13 Pty Ltd.	719,576	0.96%
Orbit Drilling Pty Ltd	606,665	0.81%
FATS Pty Ltd	575,000	0.77%
<u>Nor-West Constructions P/L</u>	<u>550,000</u>	<u>0.73%</u>
	30,693,708	40.92%