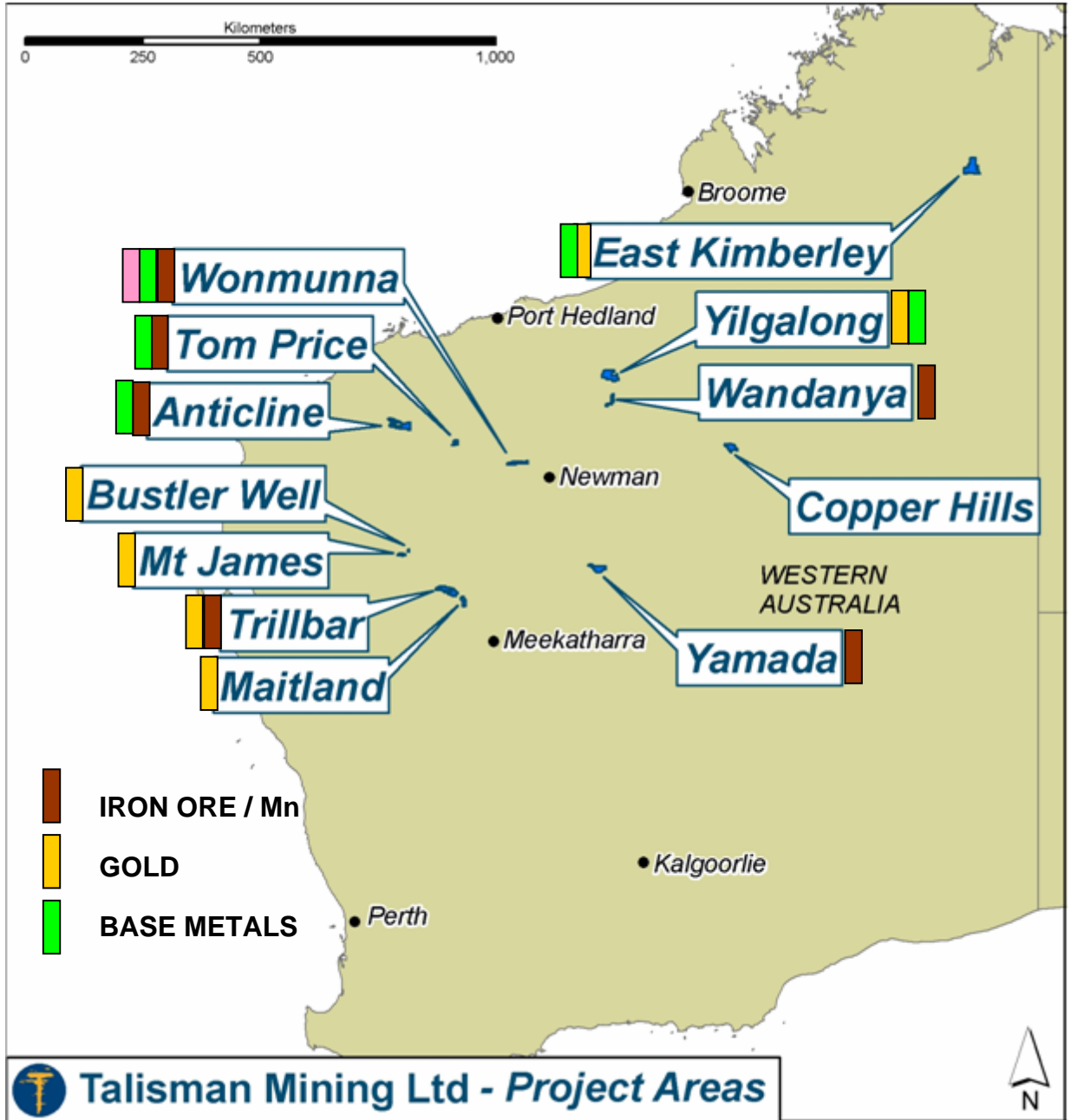




TALISMAN MINING LTD

A horizontal band across the middle of the slide shows a sunset or sunrise. The sky is filled with soft, horizontal clouds in shades of orange, red, and yellow, transitioning from a bright orange near the horizon to a darker, more muted orange at the top. The horizon line is dark, suggesting a silhouette of a landscape or a body of water.

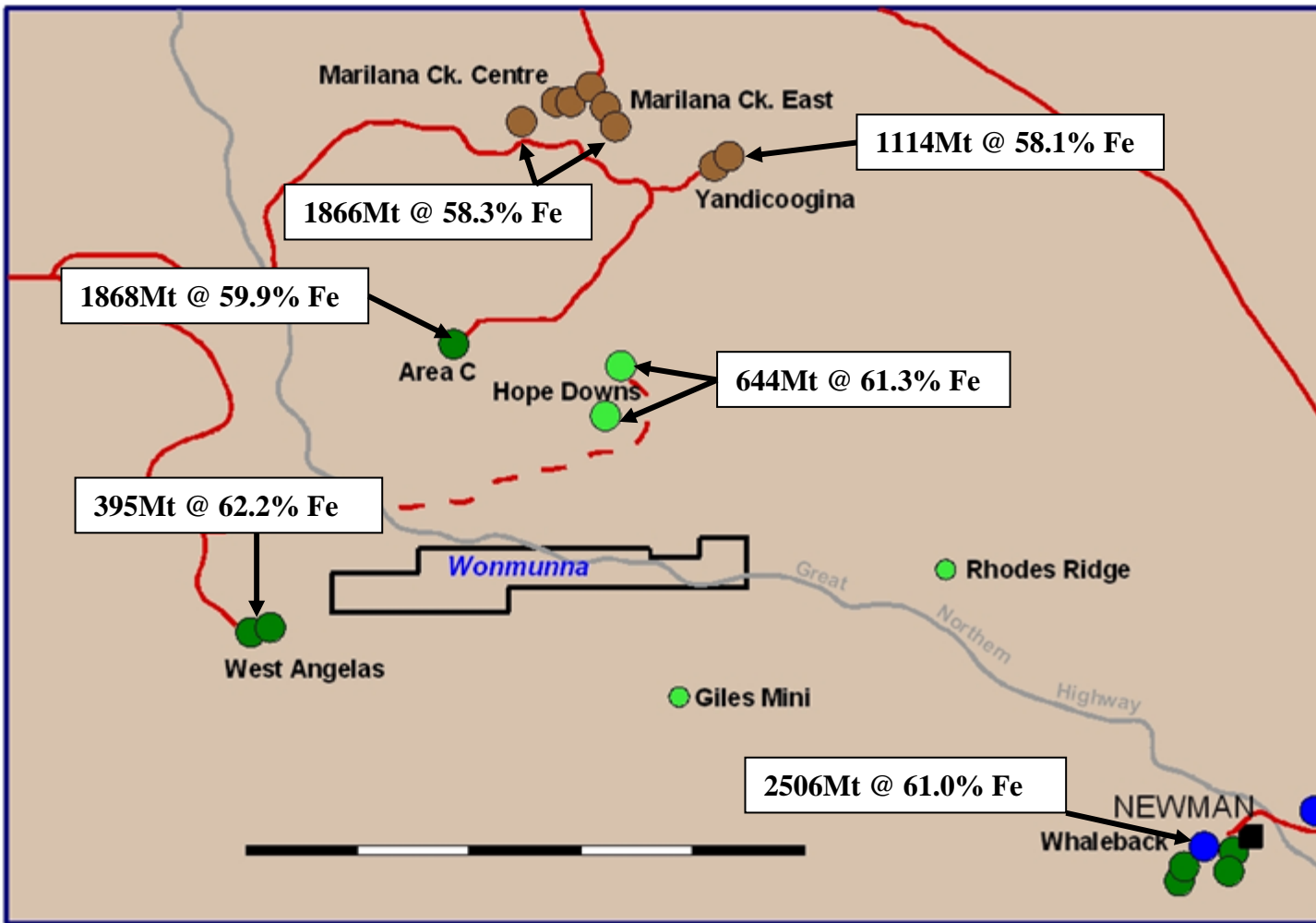
IRON (MANGANESE) PROJECTS



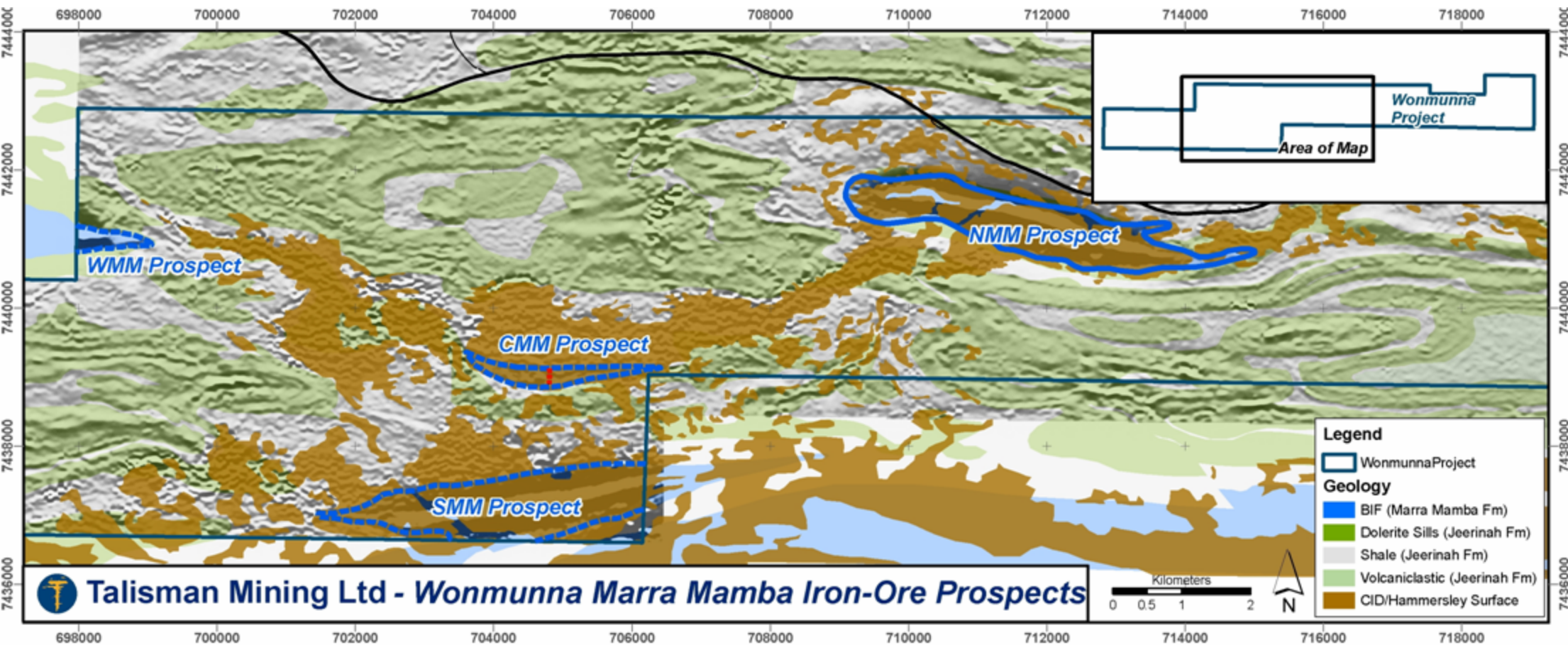
June 2008 - State of Play

| <i>Project</i> | <i>Prospect</i> | <i>Drill (Best)</i> | <i>Anticipated Resource</i> |
|-----------------|------------------|-------------------------|---------------------------------|
| WONMUNNA | NMM | 20m @ 61.41% Fe | August, 2008 |
| | SMM | 28m @ 56.49% Fe | January, 2009 |
| | CMM / WMM | No drilling | July, 2009 |
| | CCID | 4m @ 57.9% Fe | |
| | ECID | No drilling | |
| TRILLBAR | NIF | No drilling | December, 2008 |
| | SIF | No drilling | |
| YAMADA | Yamada | No drilling | |
| WANDANYA | Wandanya | No drilling | Mn: March, 2009 |

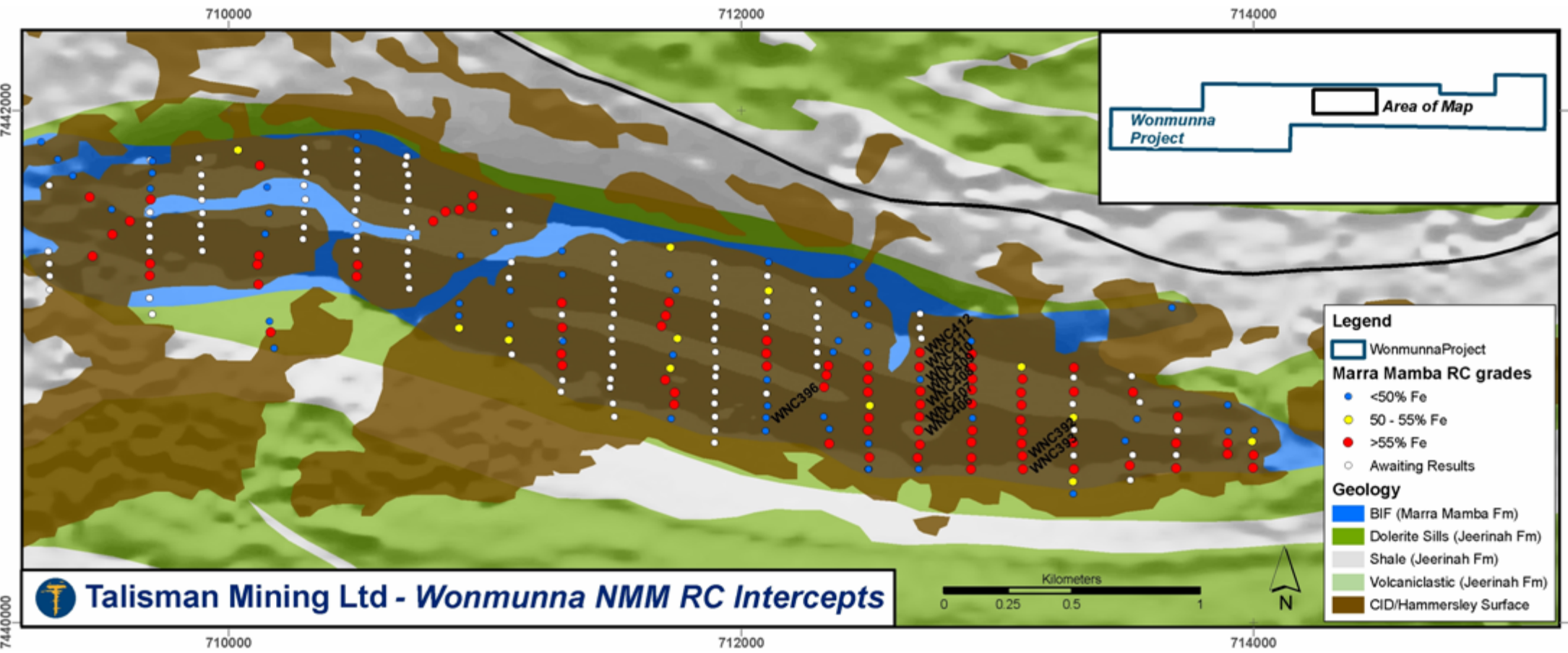
WONMUNNA



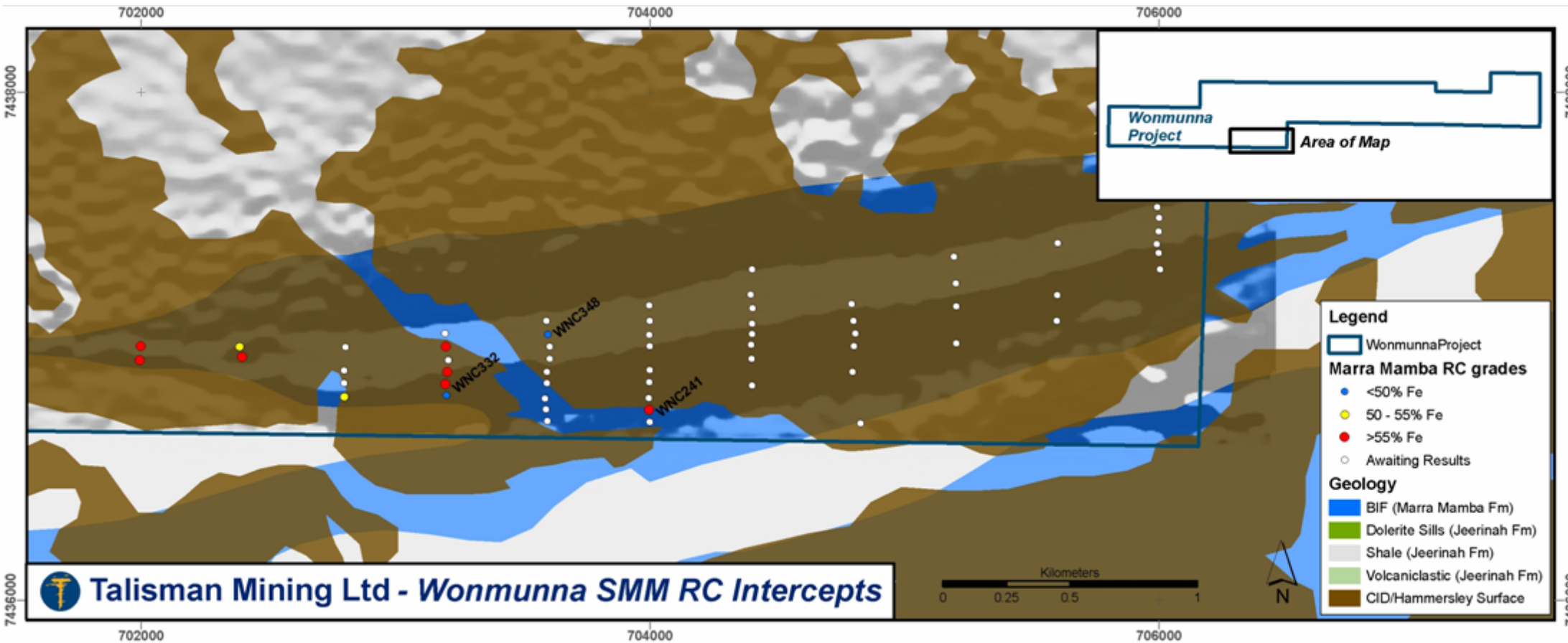
- Mine: Hematite - goethite mineralised Brockman Iron Formation.
- Mine: Channel Iron Deposit (CID)
- Mine: Hematite - goethite mineralised Marra Mamba Iron Fmn.
- Hope Downs Mine (Under construction)
- Unmined major deposit
- Existing BHP and Rio Tinto Railways
- - Railway under construction
- Talisman Mining Ltd Wonmunna Tenement (E47/1137)









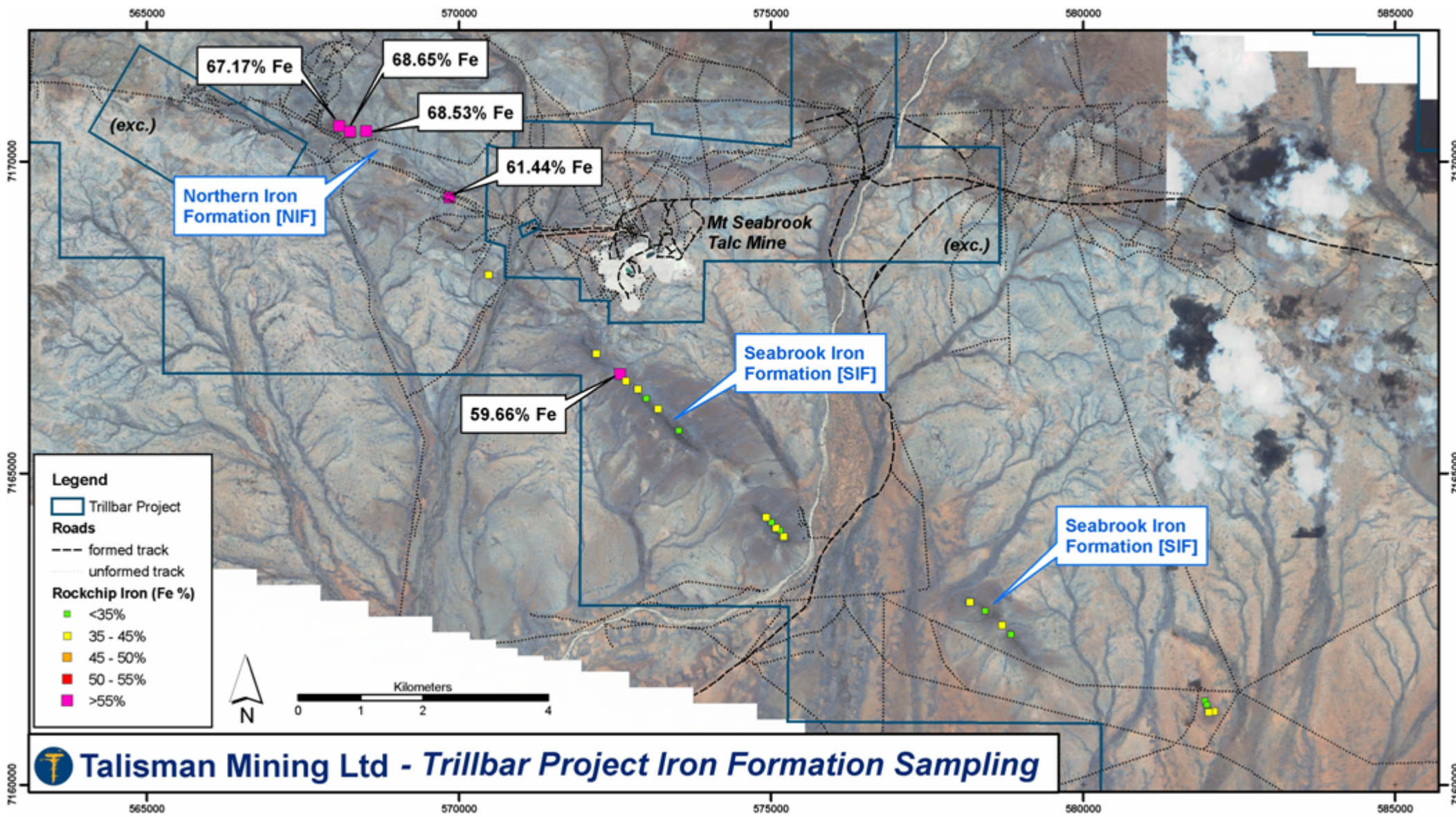


WONMUNNA

Summary

- **Significant Iron intercepts at NMM prospect to 20m @ 61.41% Fe.**
- **Resource drilling at NMM completed.**
- **Maiden JORC NMM resource anticipated by August, 2008.**
- **Metallurgical test work NMM to commence August, 2008.**
- **Reconnaissance drilling SMM prospect commenced April, 2008.**
- **Maiden JORC SMM resource anticipated by January, 2009.**
- **Recon. drilling CMM & WMM prospects commenced June, 2008.**
- **Maiden JORC CMM & WMM resources anticipated by July, 2009.**

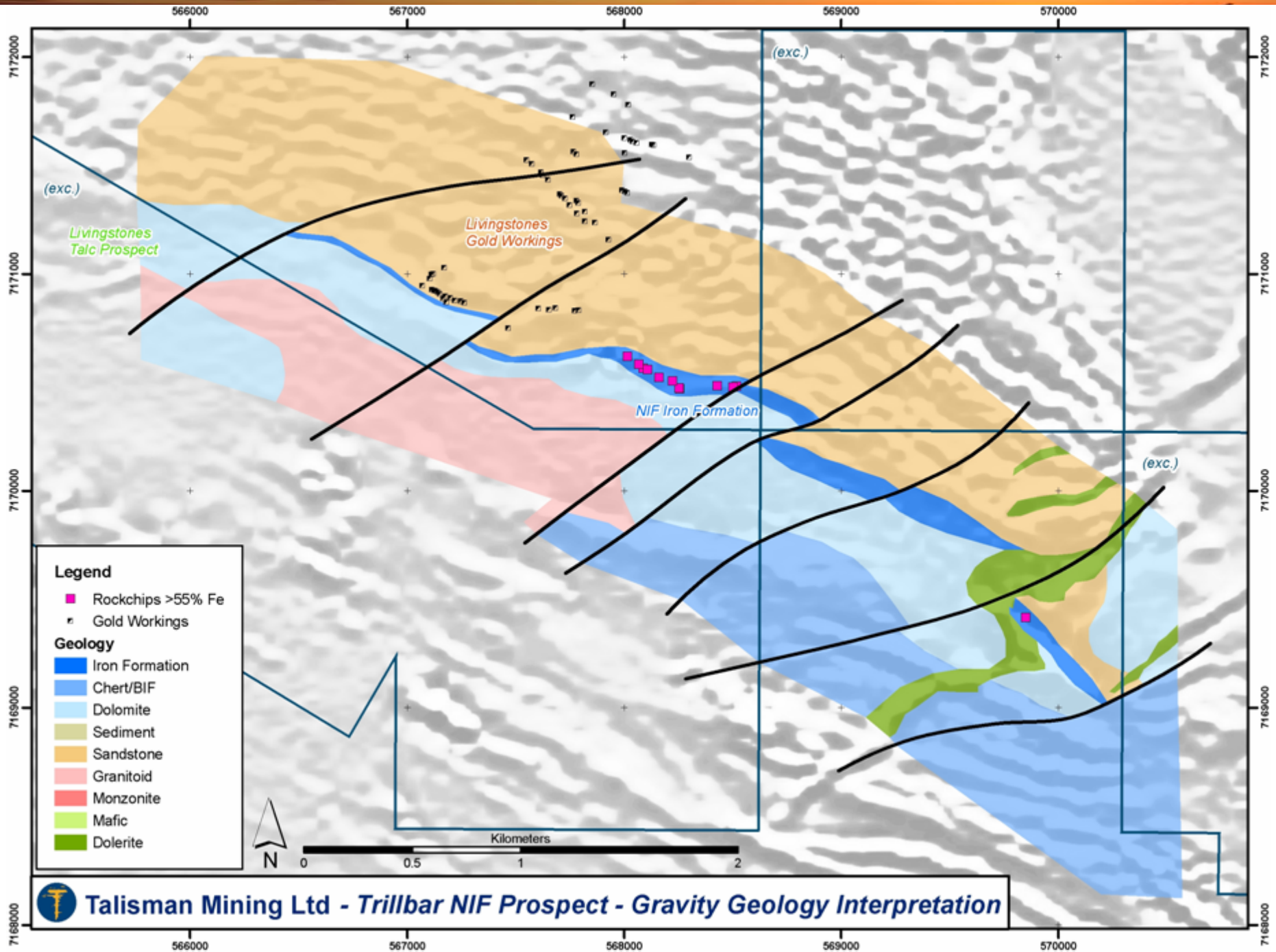
TRILLBAR



Talisman Mining Ltd - Trillbar Project Iron Formation Sampling

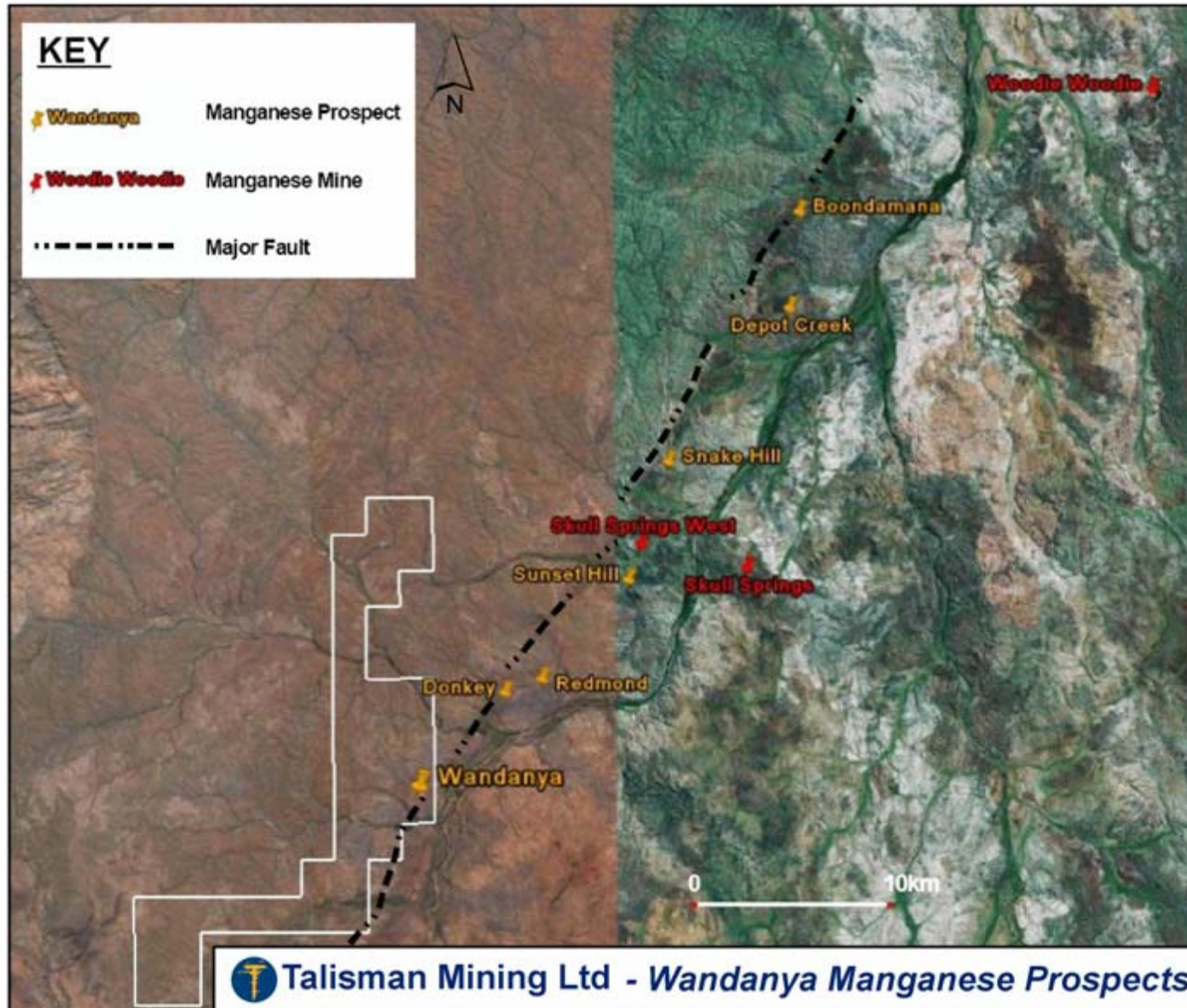
TRILLBAR: NIF
Massive Hematite





Talisman Mining Ltd - Trillbar NIF Prospect - Gravity Geology Interpretation

WANDANYA



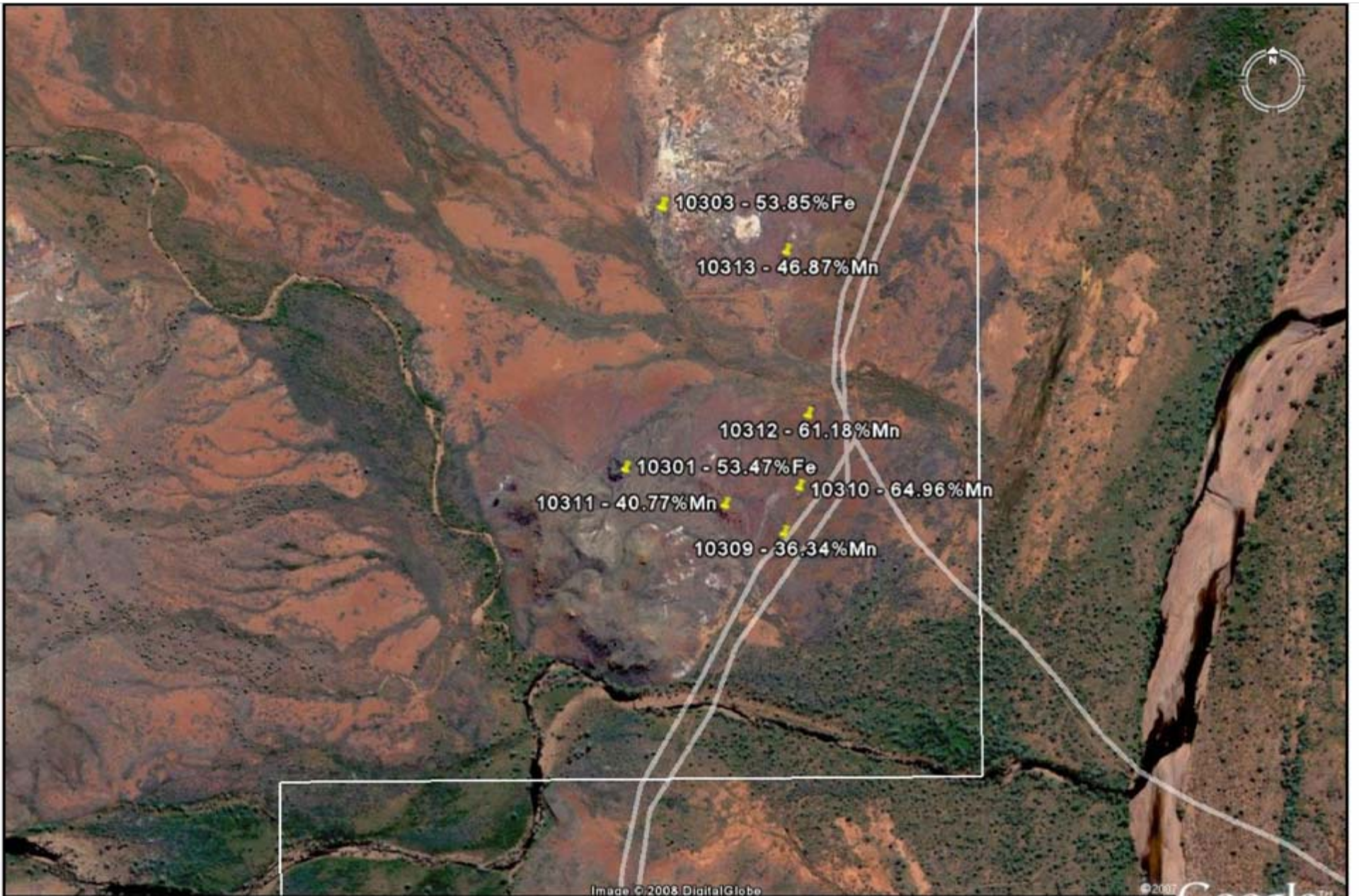


Image © 2008 DigitalGlobe

© 2007

Google™

Eye alt 10439 ft

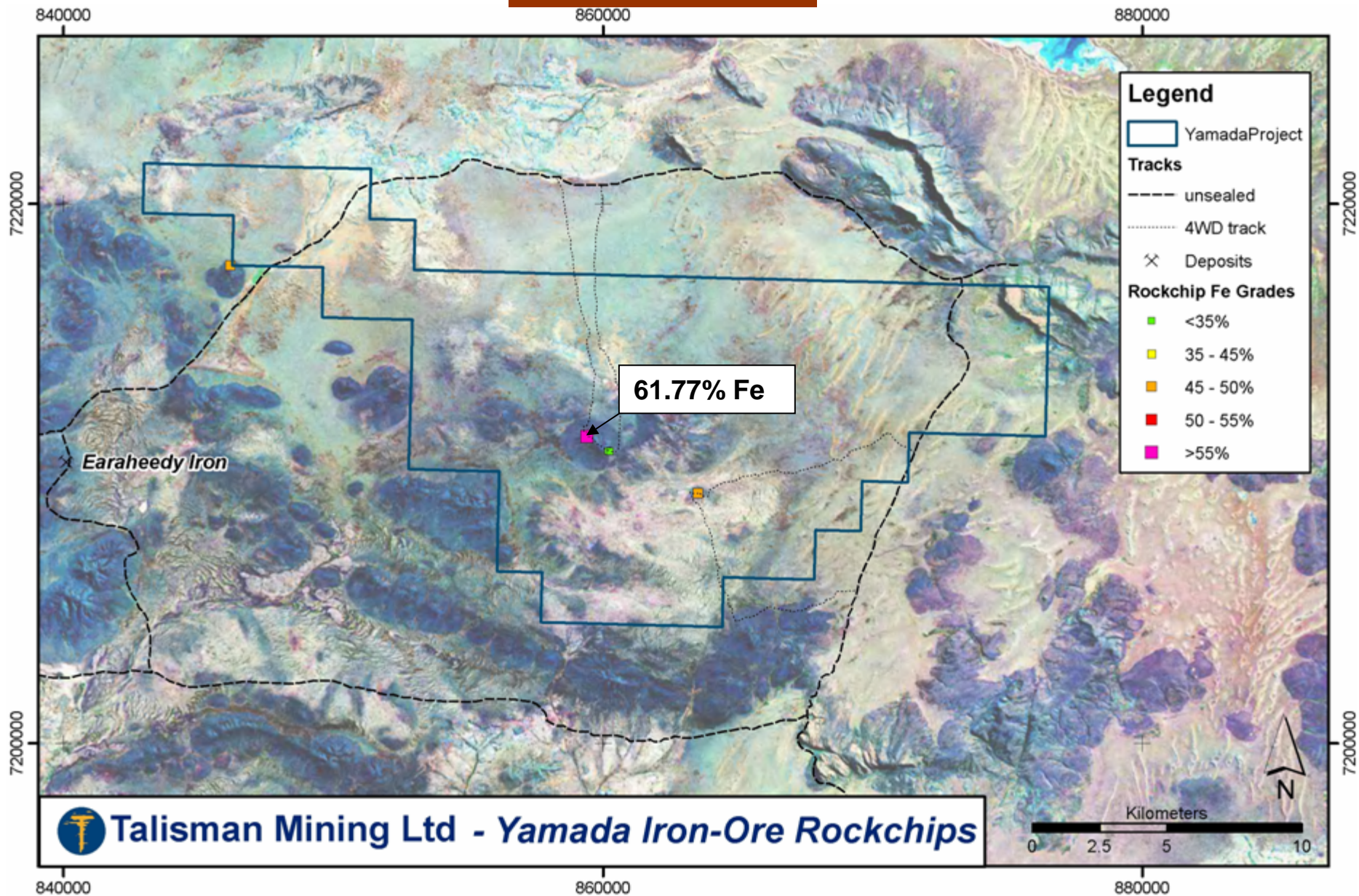


Talisman Mining Ltd - Wandanya Project Rockchip Sampling

**WANDANYA:
Massive Pyrolusite**



YAMADA



 **Talisman Mining Ltd - Yamada Iron-Ore Rockchips**

CORPORATE SUMMARY

BOARD

Alan Senior– Chairman

Steve Elliott – Managing Director

Mick Bunyard – Non-executive Director

Karen Gadsby - Non-executive Director

ASX CODE: TLM

CAPITAL STRUCTURE

| | |
|--------------------------------|--------------|
| Shares on Issue | 75,055,499 |
| Options (20c, 31/12/2010) | 25,059,805 |
| Unlisted Options | 3,222,000 |
| Capitalisation (June 10, 2008) | \$42,000,000 |

TOP 15

(At 4/10/2007)

| | | |
|-----------------------------------|----------------|--------------|
| S. J. Elliott | 6,900,002 | 9.19% |
| Tyche Holdings Pty Ltd | 4,960,000 | 6.61% |
| G. G. Walker | 4,175,000 | 4.90% |
| UBS Wealth Management | 2,000,000 | 2.66% |
| Metalmite Pty Ltd | 1,800,000 | 2.40% |
| Redcode Pty Ltd | 1,700,000 | 2.26% |
| Bitutti Pty Ltd | 1,700,000 | 2.26% |
| Golbay Ltd | 1,500,000 | 2.00% |
| P. R. Oost | 1,262,600 | 1.68% |
| C. M. Edwards | 1,144,685 | 1.52% |
| T. R. Gerard | 1,100,000 | 1.47% |
| Trader 13 Pty Ltd. | 719,576 | 0.96% |
| Orbit Drilling Pty Ltd | 606,665 | 0.81% |
| FATS Pty Ltd | 575,000 | 0.77% |
| <u>Nor-West Constructions P/L</u> | <u>550,000</u> | <u>0.73%</u> |
| | 30,693,708 | 40.92% |