



TALISMAN
MINING LIMITED
ASX:TLM



Closing in on world-class copper-gold deposits

Resources Rising Stars, September 2011

Disclaimer and Competent Person's Statements

Disclaimer

This presentation is not a prospectus nor an offer for securities in any jurisdiction nor a securities recommendation. The information in this presentation is an overview and does not contain all information necessary for investment decisions. In making investment decisions in connection with any acquisition of securities, investors should rely on their own examination of Talisman Mining Ltd (**Talisman Mining** or the **Company**) and consult their own legal, business and/or financial advisers.

The information contained in this presentation has been prepared in good faith by Talisman Mining Ltd, however no representation or warranty expressed or implied is made as to the accuracy, correctness, completeness or adequacy of any statements, estimates, opinions or other information contained in this presentation. To the maximum extent permitted by law, Talisman Mining Ltd, its directors, officers, employees and agents disclaim liability for any loss or damage which may be suffered by any person through the use or reliance on anything contained in or omitted from this presentation.

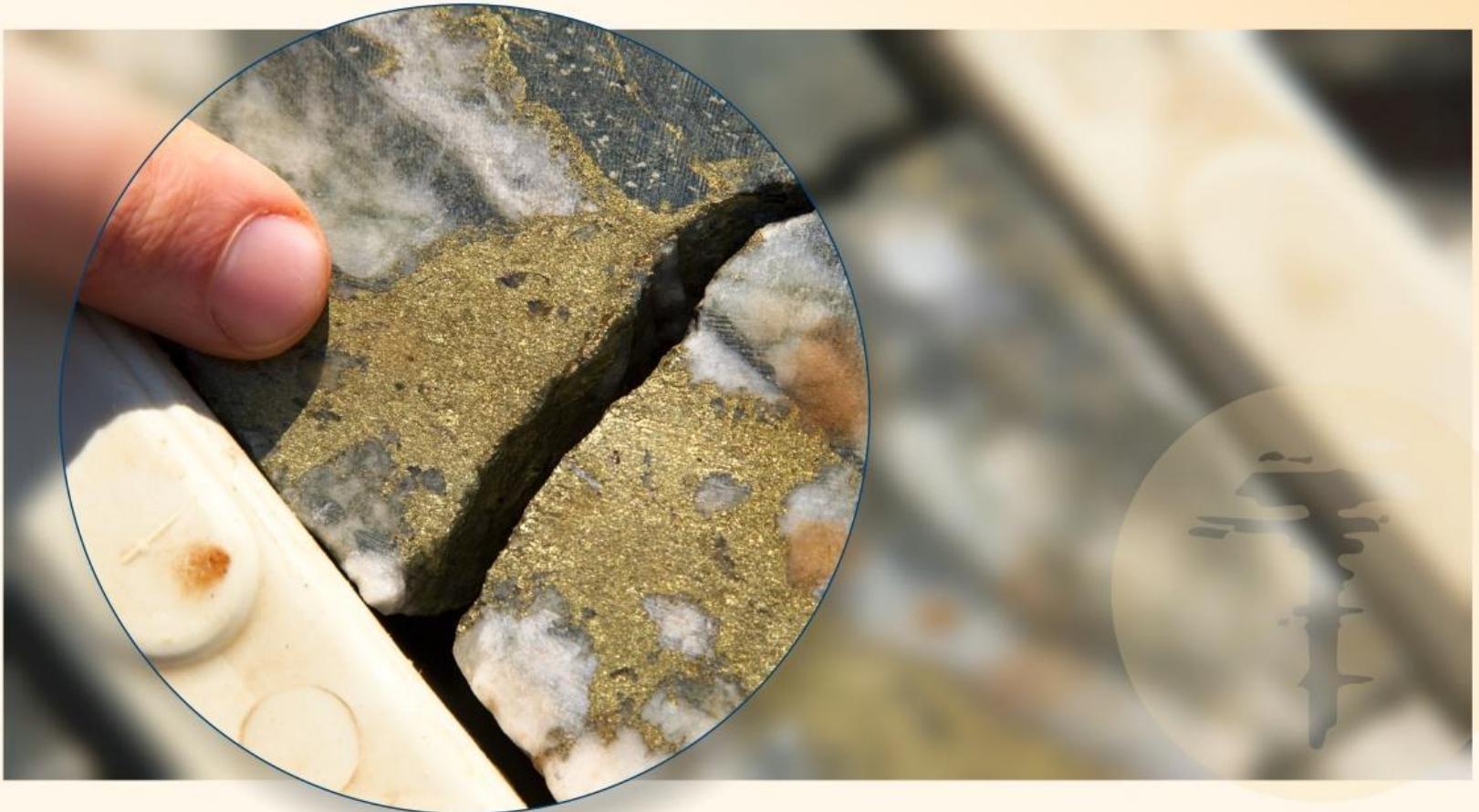
Certain information in this presentation refers to the intentions of Talisman Mining Ltd, but these are not intended to be forecasts, forward looking statements or statements about future matters for the purposes of the Corporations Act or any other applicable law. The occurrence of events in the future are subject to risks, uncertainties and other factors that may cause Talisman Mining Ltd's actual results, performance or achievements to differ from those referred to in this presentation. Accordingly, Talisman Mining Ltd, its directors, officers, employees and agents do not give any assurance or guarantee that the occurrence of the events referred to in the presentation will actually occur as contemplated.

Competent Person's Statement

Information in this presentation that relates to Exploration Results and Mineral Resources is based on information compiled by Mr Graeme Cameron, who is a member of the Australasian Institute of Mining and Metallurgy. Mr Cameron is a full time employee of Talisman Mining Ltd and has sufficient experience which is relevant to the style of mineralisation and types of deposit under consideration and to the activities undertaken to qualify as a Competent Person as defined in the 2004 Edition of the "Australian Code for Reporting of Mineral Resources and Ore Reserves". Mr Graeme Cameron consents to the inclusion in this presentation of the matters based on information in the form and context in which it appears.

Talisman – The Vision

“To build a quality Australian mining and exploration company focused on generating profits and shareholder returns...”



Talisman – Established Business Model

- Successful history with a focus on:
 - *Discovery, development and exploitation of base metals and gold*
 - *Organic growth through exploration success*
 - *Track record of maximising shareholder wealth*
- Creating value and growth through:
 - *Exploration - systematic, scientific approach*
 - *Asset dealings*
 - *Funding capacity*
 - *Execution capability*



Talisman – Corporate Overview

Capital Structure

Shares	131.5M
Unlisted Options	11.2M
Market Cap - (undiluted @ 55 cents per share)	\$72M
Cash	\$40M

Listed Investments

- Rico Resources	35m Shares
- Shaw River	1m Shares

Management

Gary Lethridge (*Managing Director*)

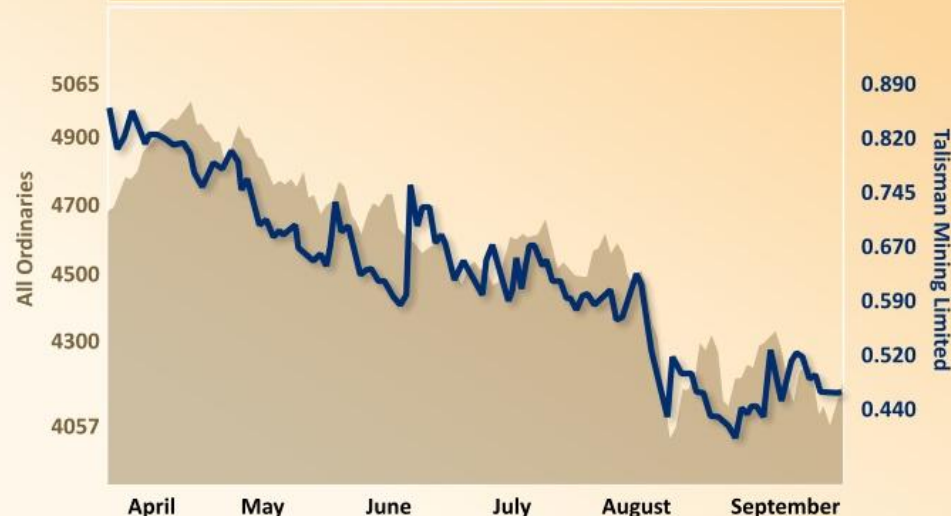
Peter Langworthy (*Executive Director*)

Dan Madden (*Chief Financial Officer*)

Graeme Cameron (*General Manager Exploration*)

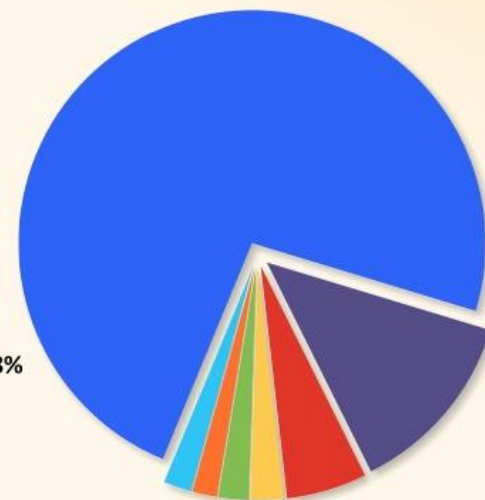
Peter Cash (*Manager Corporate Development*)

All Ordinaries vs Talisman - Six Months to 18th Sept 2011

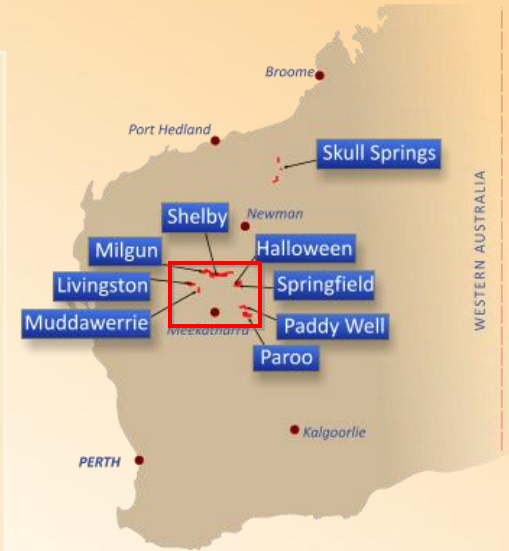
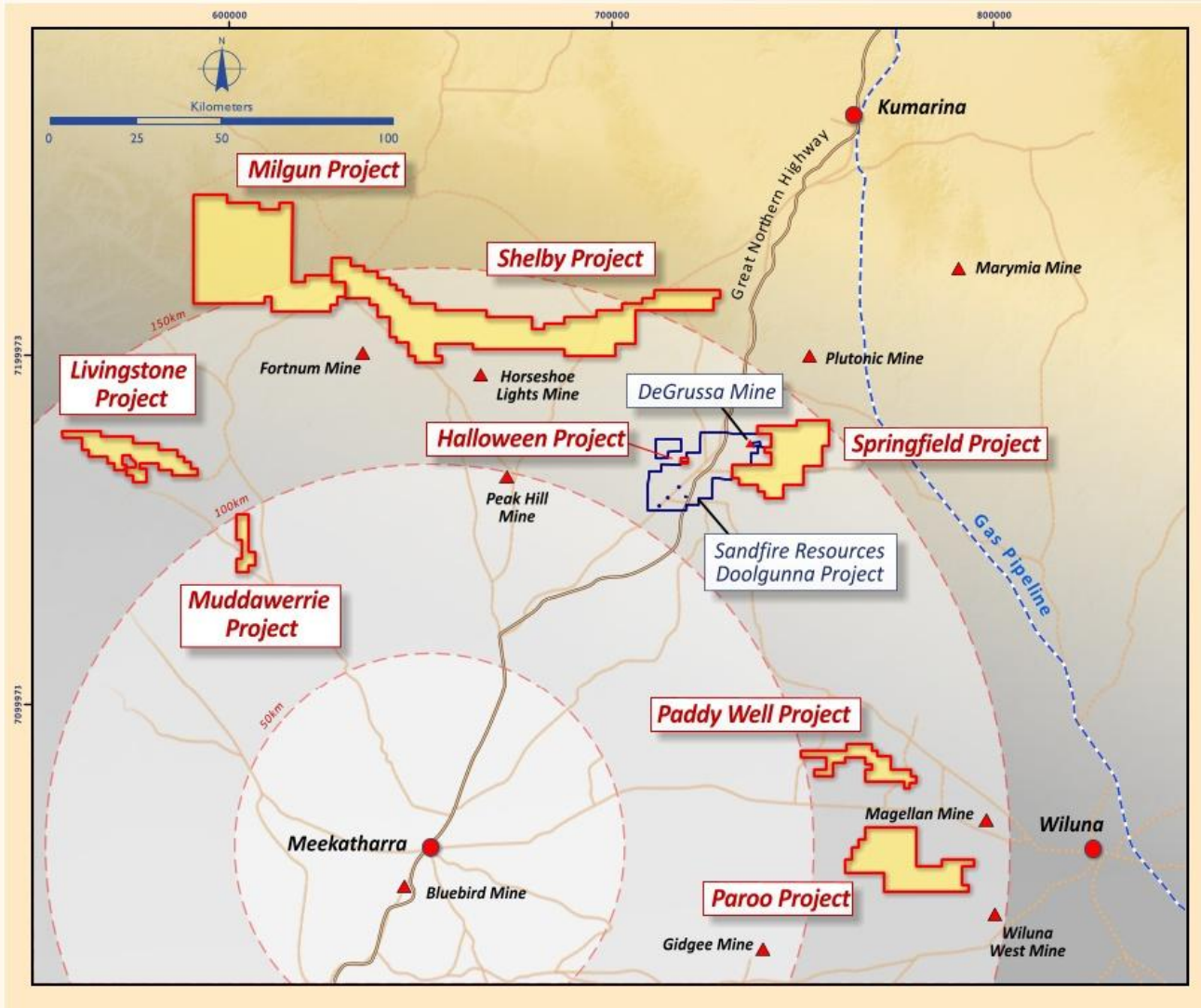


All Ordinaries vs Talisman - Six Months to 18th Sept 2011

- Private Investors - 73.44%
- Kerry Harmanis - 12.96%
- Domestic Institutions - 5.56%
- Directors - 2.32%
- Corporate Stakeholders - 2.08%
- Hedge Funds - 1.71%
- Others - 1.93%



Talisman Project Location



Talisman – The Projects

Key focus is the Bryah Basin copper-gold region

- *Springfield*
- *Halloween*

Emerging Gold Projects

- *Livingstone*
- *Muddawerrie*

Thinking BIG in the Gascoyne for IOCG and Ni-Cu-PGE deposits

- *Shelby*
- *Milgun*





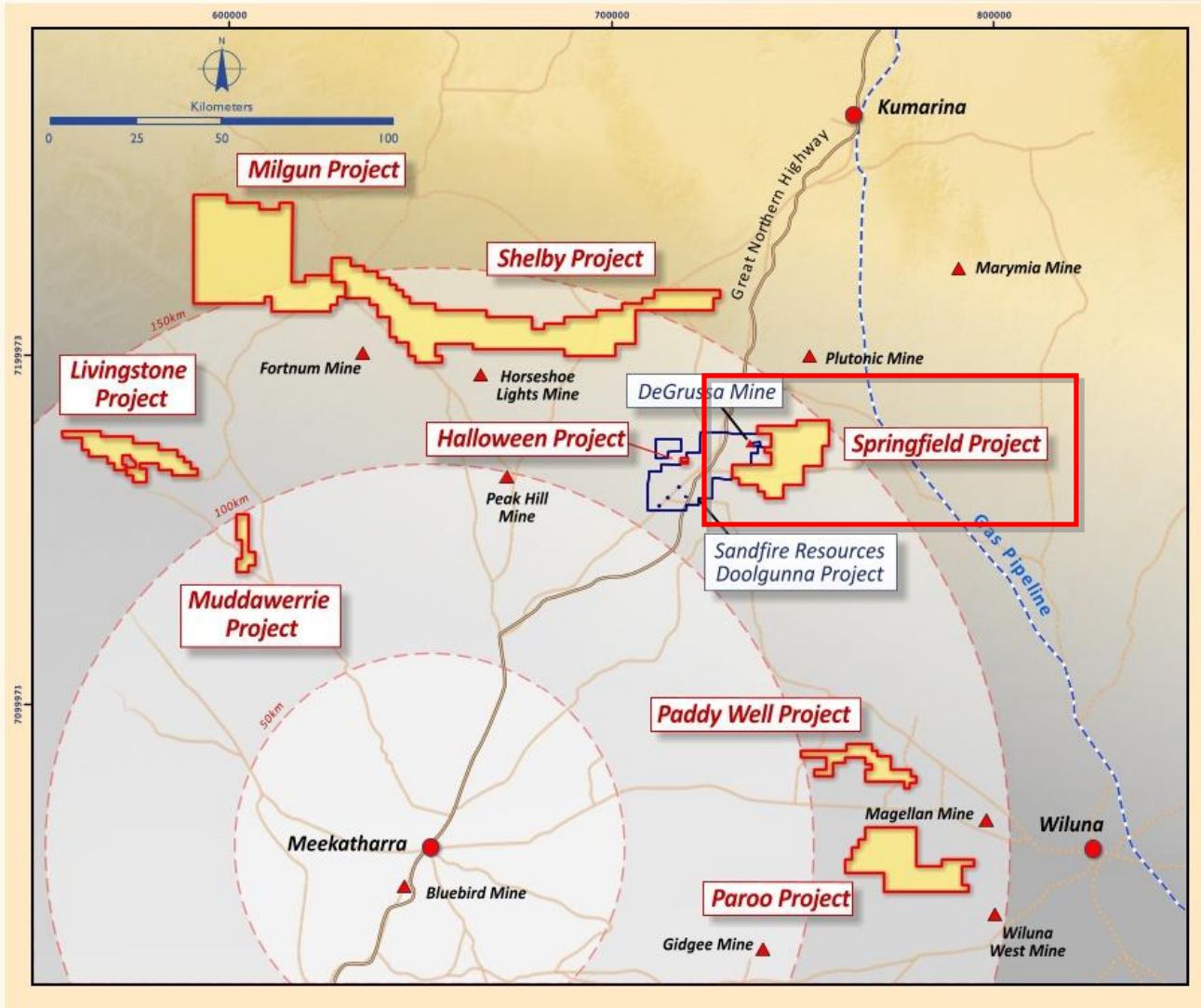
Springfield – The Flagship Project

Springfield – The Flagship Project

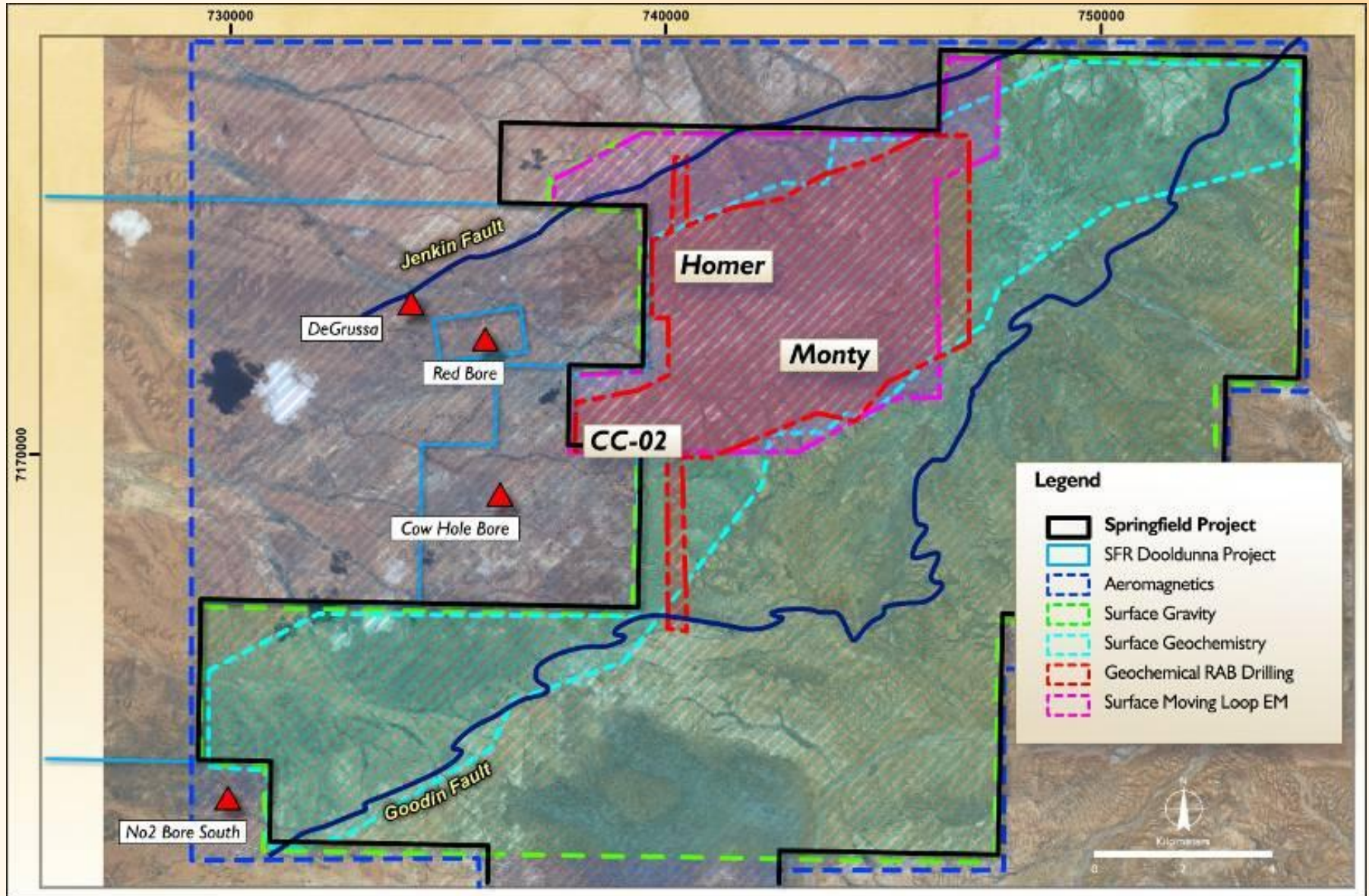
- Located within a new VMS camp
- Adjacent to Sandfire's world-class DeGrussa VMS deposit
 - *14.33Mt @ 4.6% Cu and 1.6g/t Au*
- Historically under-explored for gold and base metals
- Identification of visible copper mineralisation along multiple horizons prospective for VMS deposits:
 - *0.30 metres @ 7.60% Cu*
 - *0.50 metres @ 1.30% Cu and*
 - *0.25 metres @ 1.54% Cu*



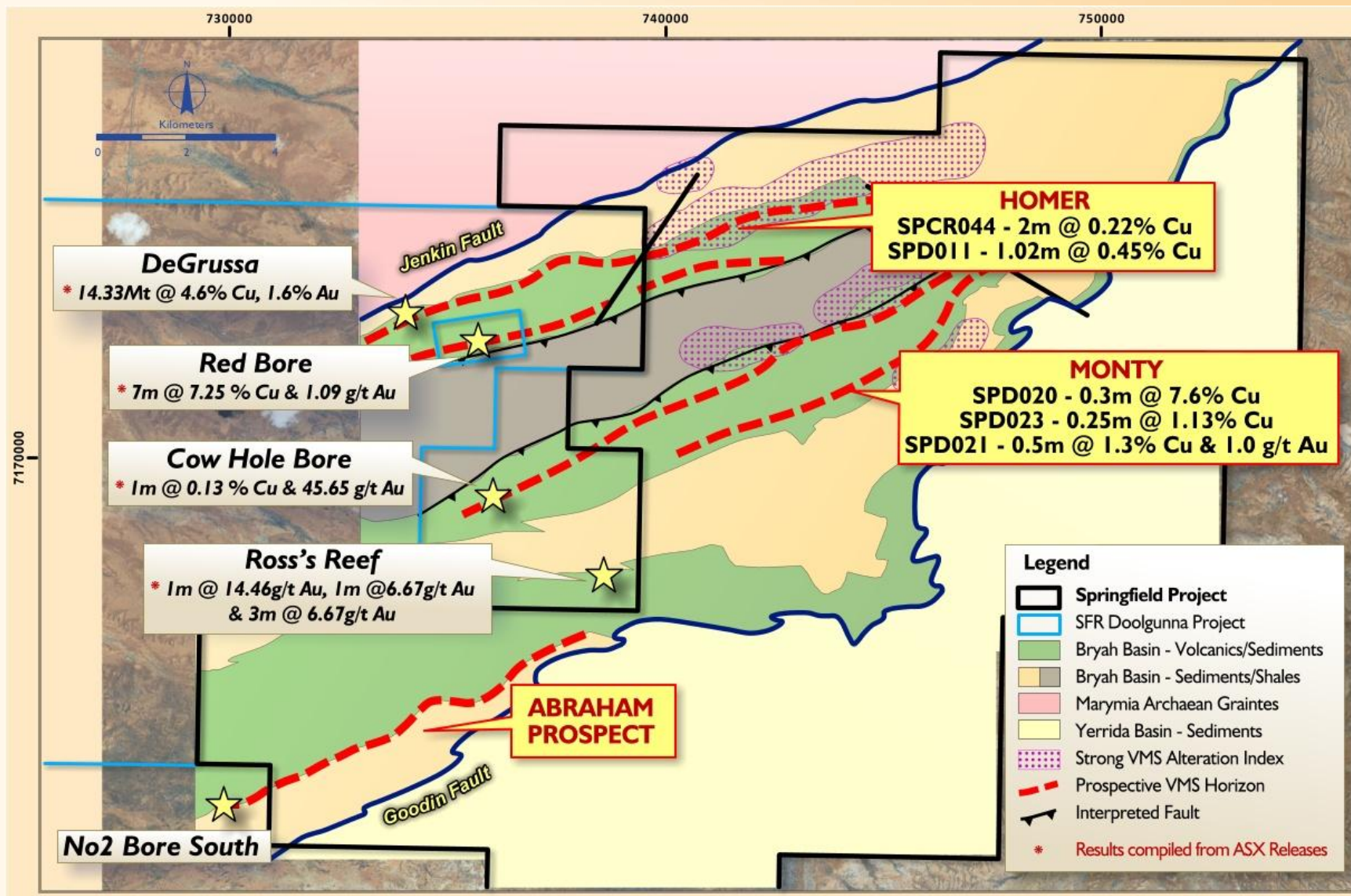
Springfield – The Flagship Project



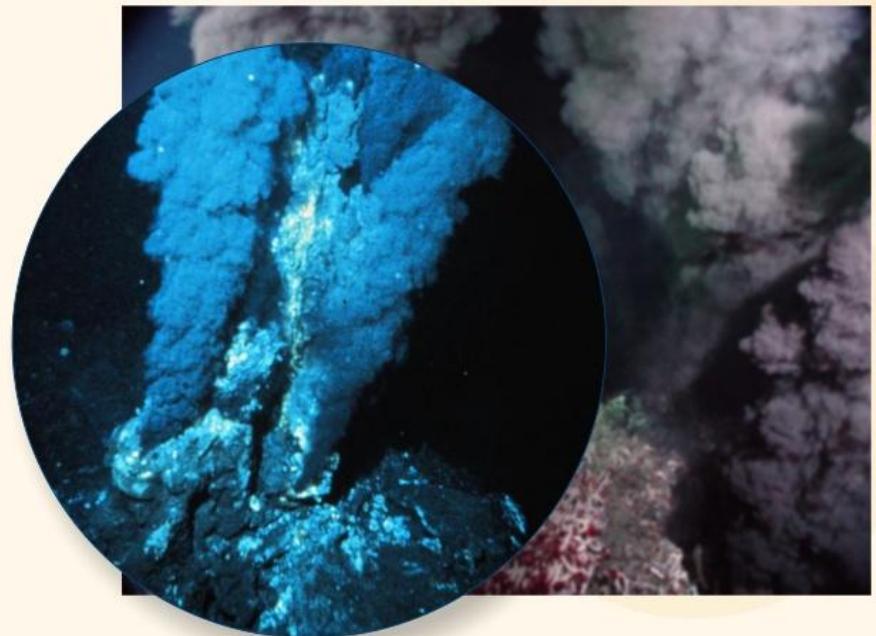
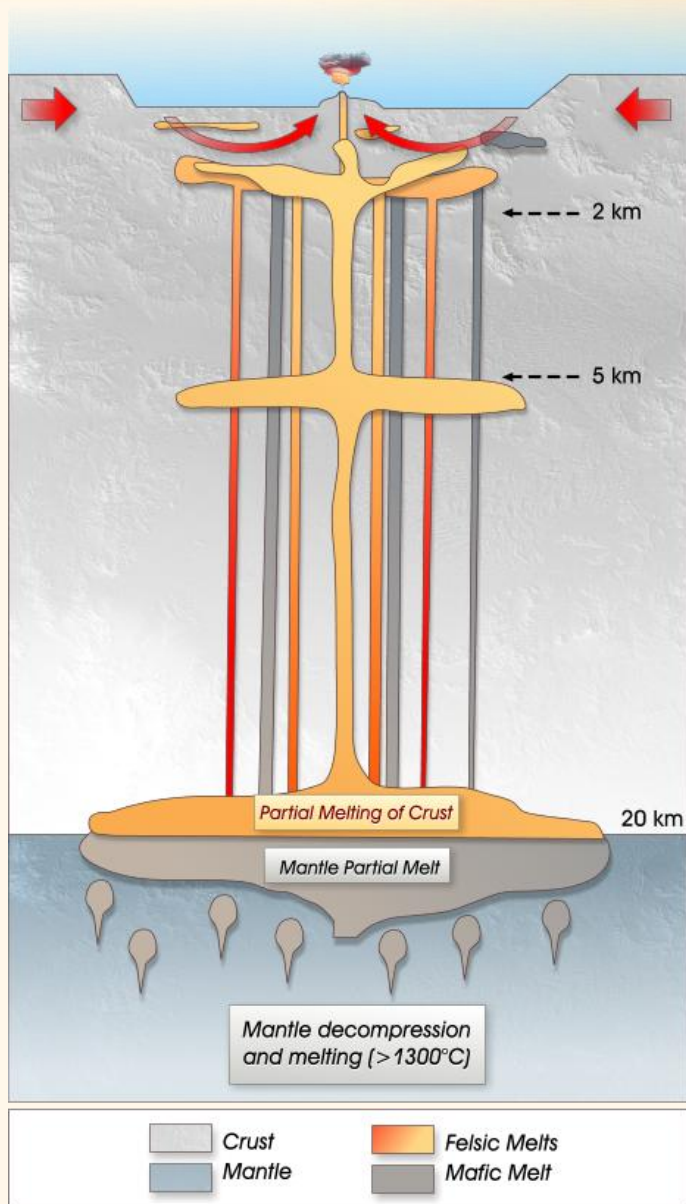
Springfield – Building the Discovery Model



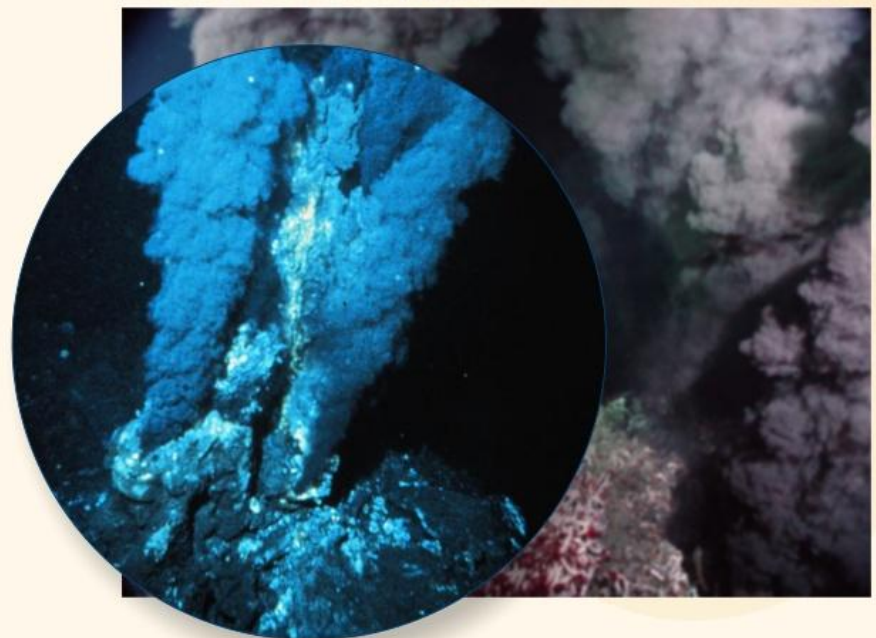
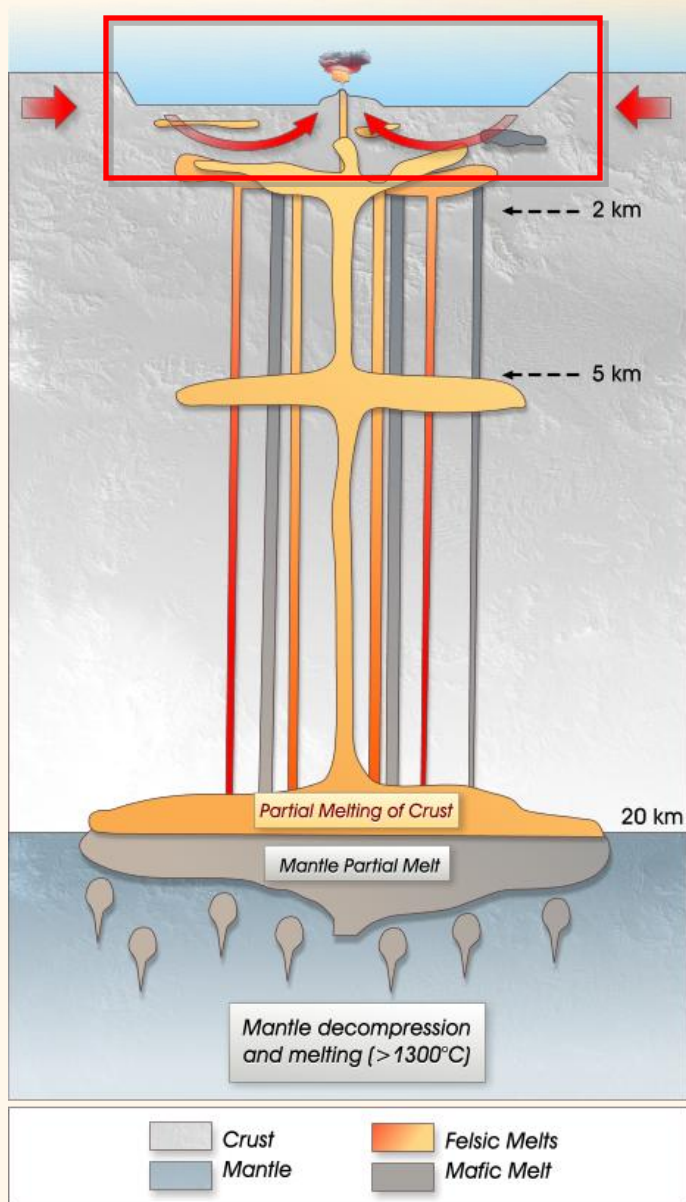
Springfield - The Targets



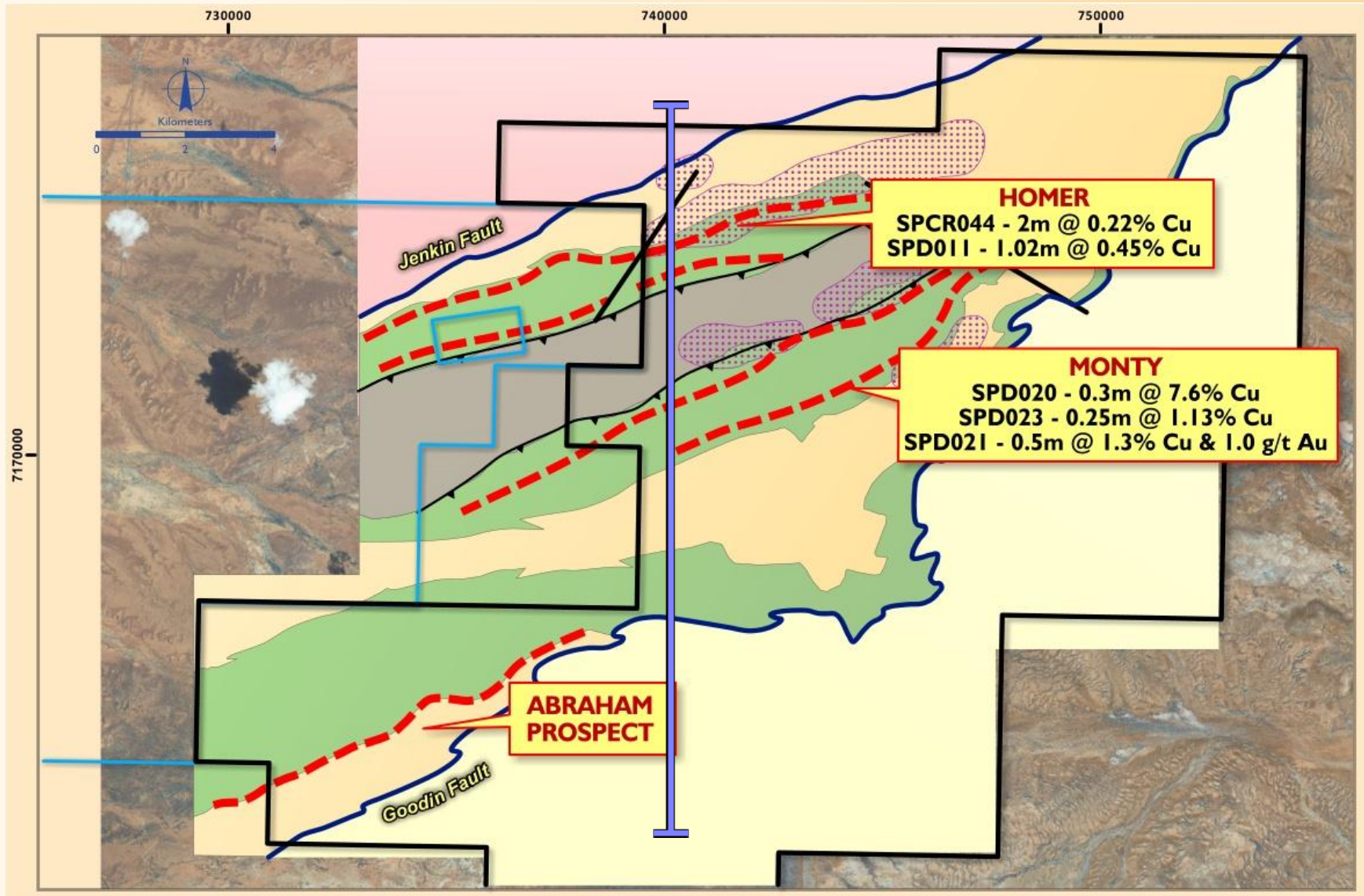
Volcanic Massive Sulphide (VMS) Geological Model



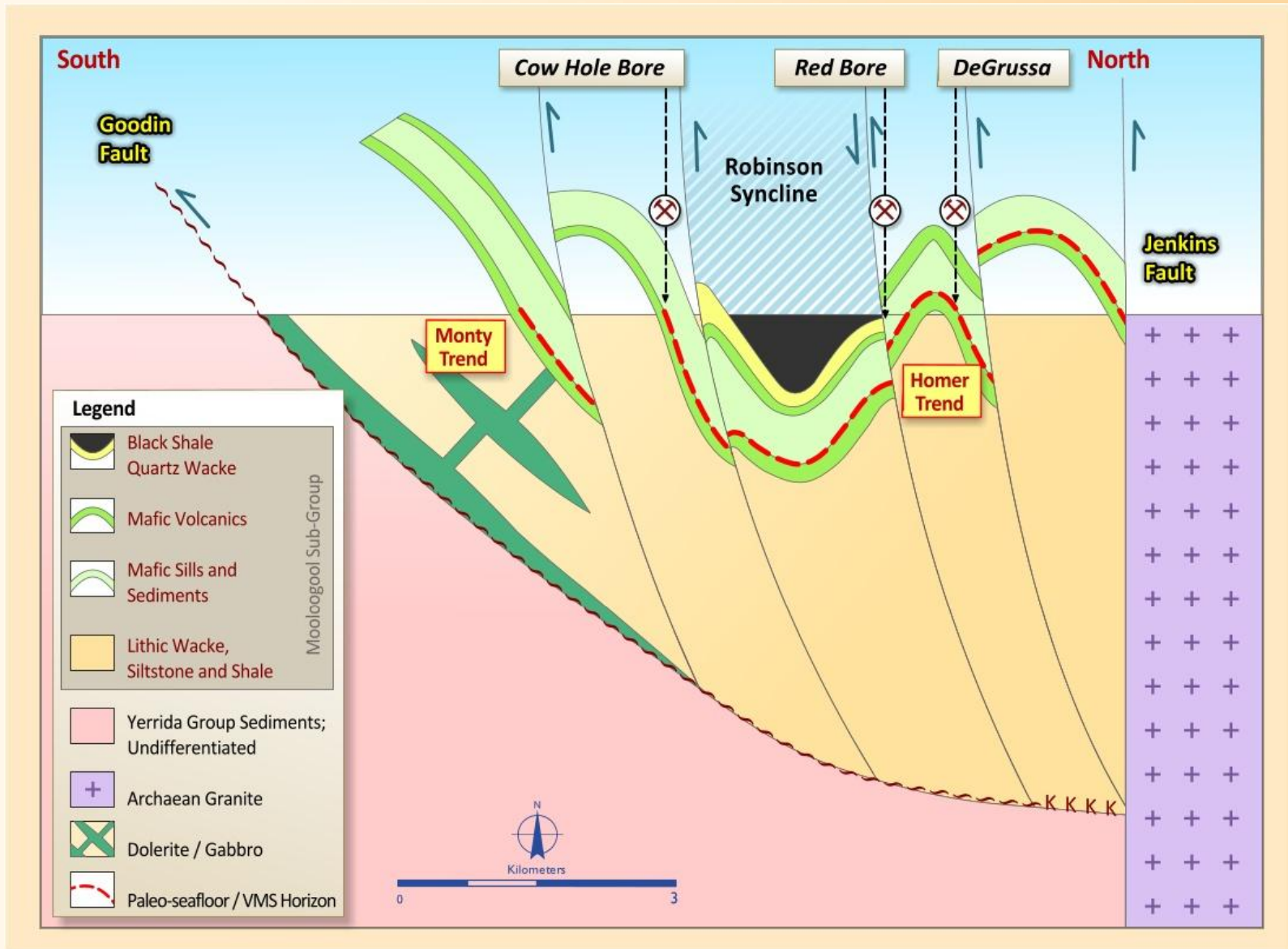
Volcanic Massive Sulphide (VMS) Geological Model



Springfield – Interpreted Regional Cross Section



Springfield – Interpreted Regional Cross Section

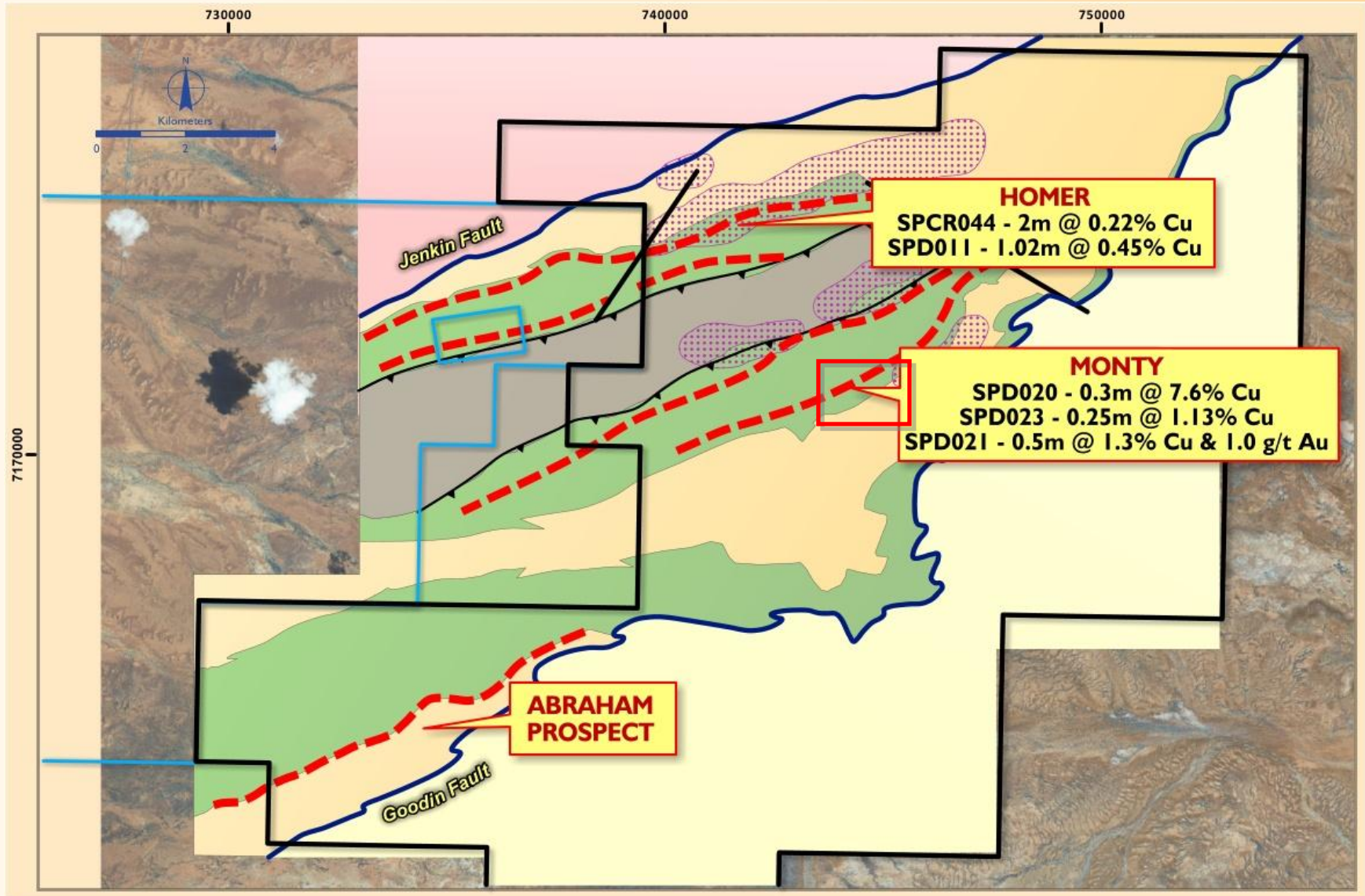


Springfield - The Growing Evidence

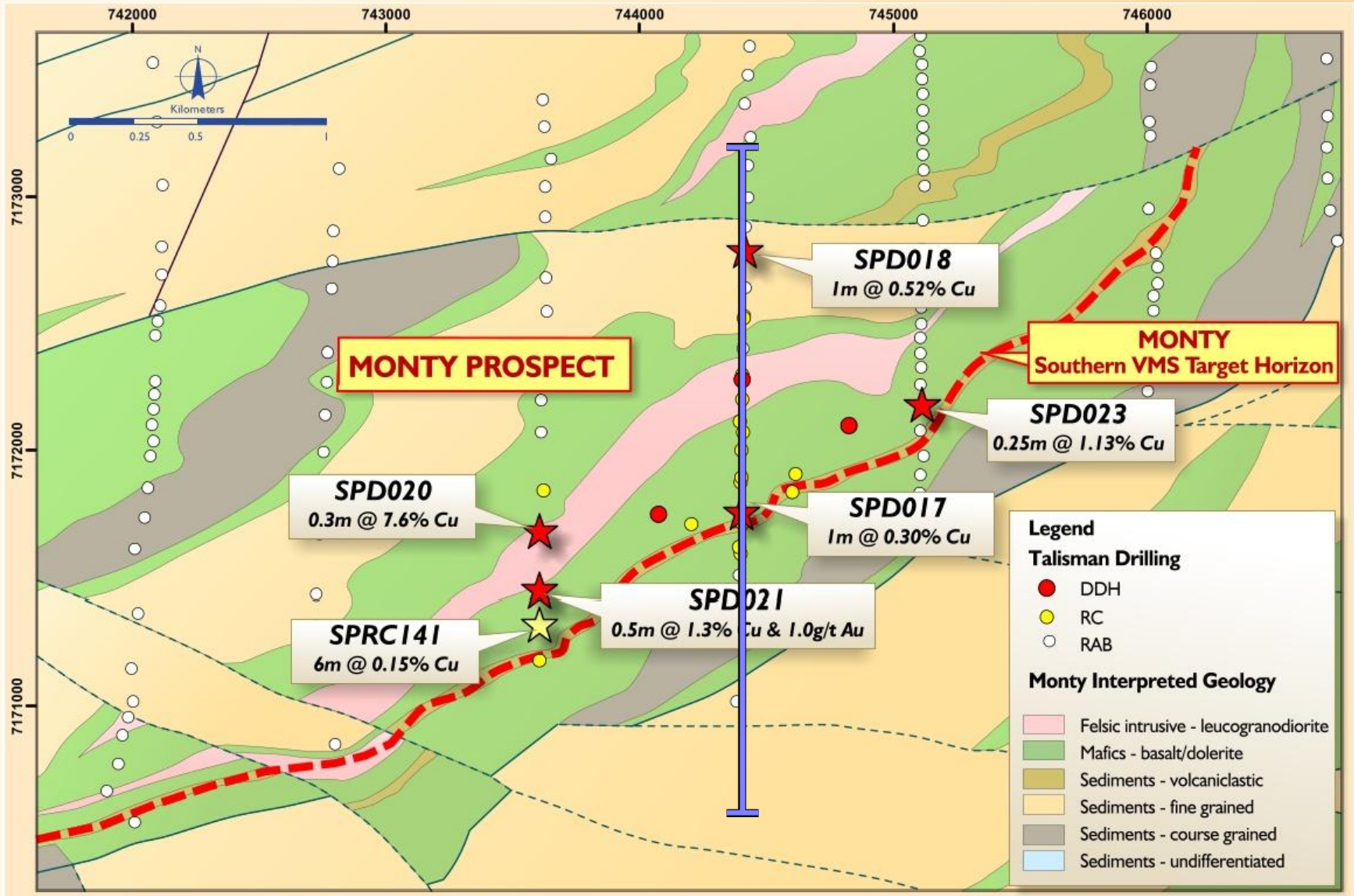
- High-quality integrated datasets now assembled to underpin search for VMS systems
 - *Development of 3D geological model*
 - *Confirmation of analogous setting to DeGrussa*
 - *Ability to target multiple distinct VMS-prospective horizons*
- Potential considered to be immense
 - *Target horizons now delineated over combined 35-40km strike*
 - *Presence of significant copper mineralisation*



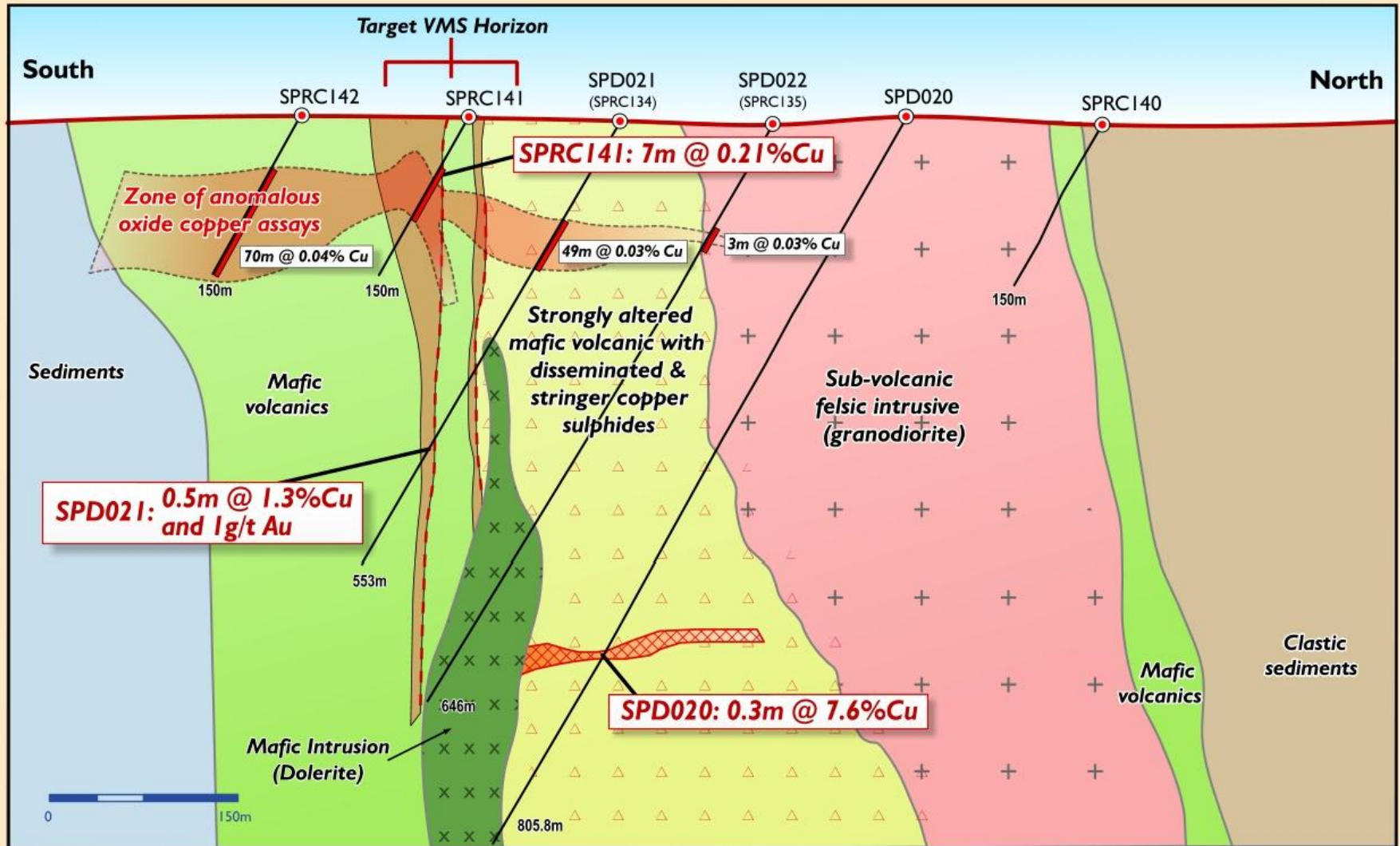
Monty Prospect – Interpreted Geology



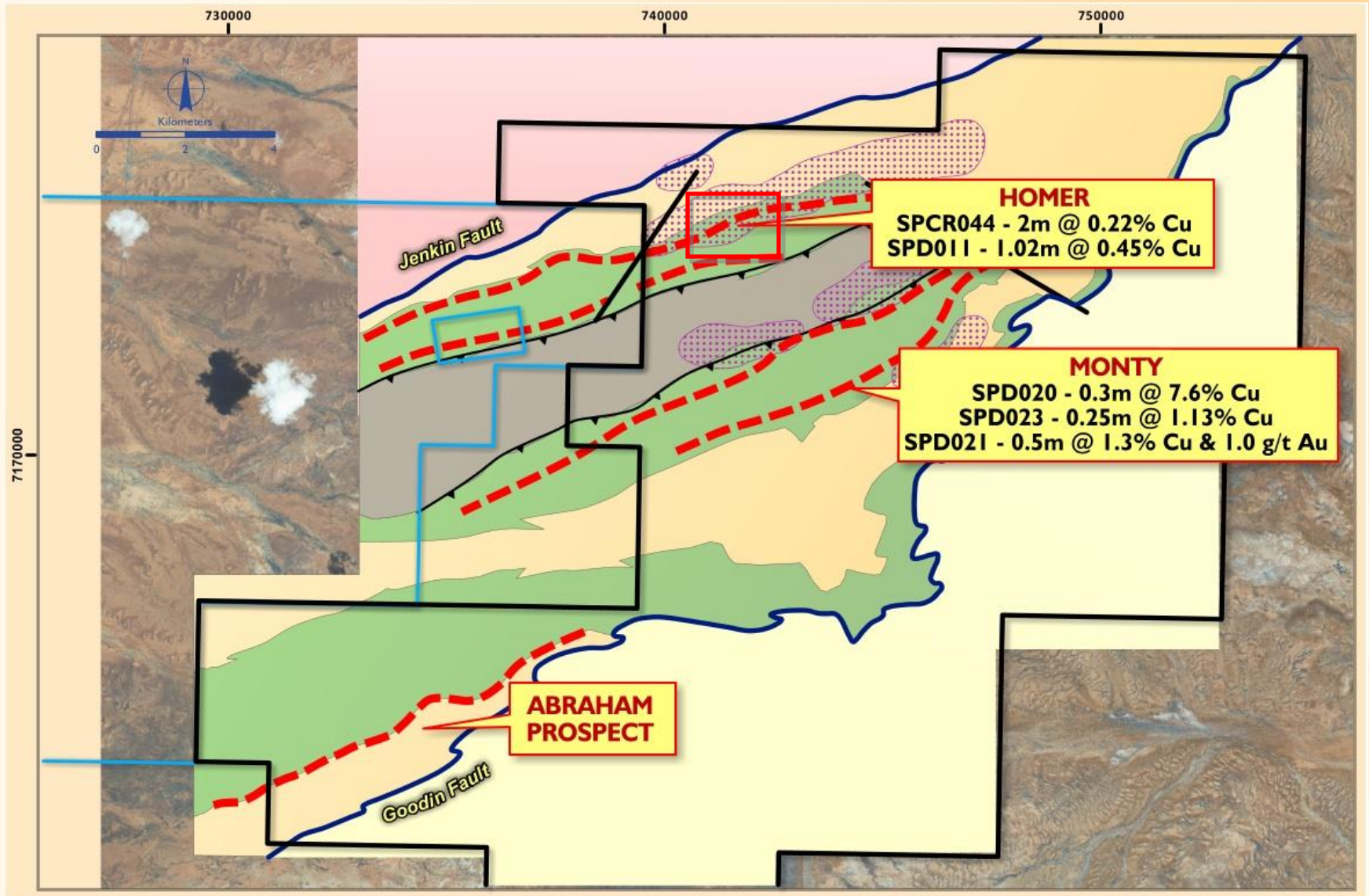
Monty Prospect - Interpreted Section



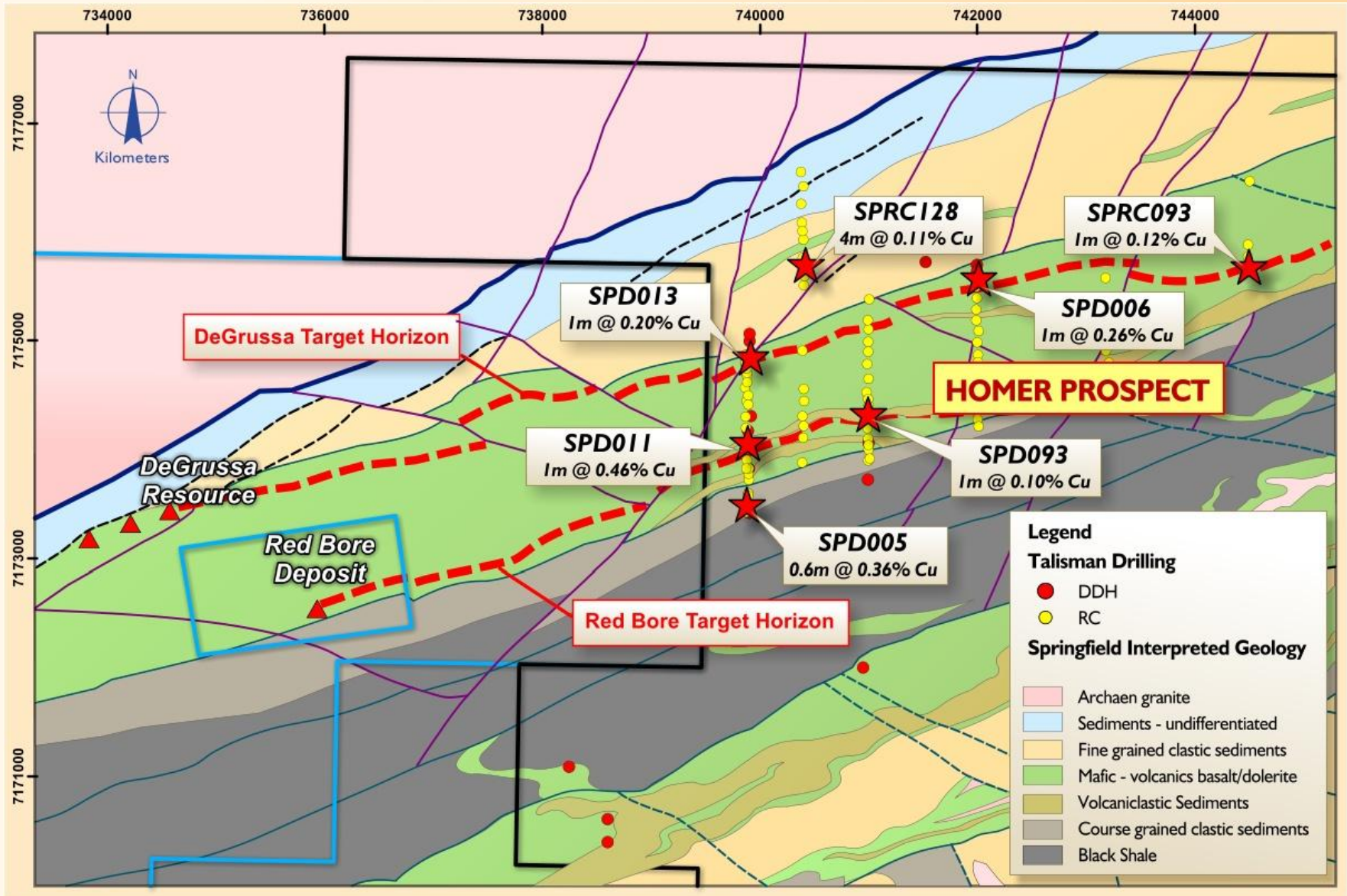
Monty Prospect - Interpreted Section



Homer Prospect - Interpreted Geology



Homer Prospect - Interpreted Geology

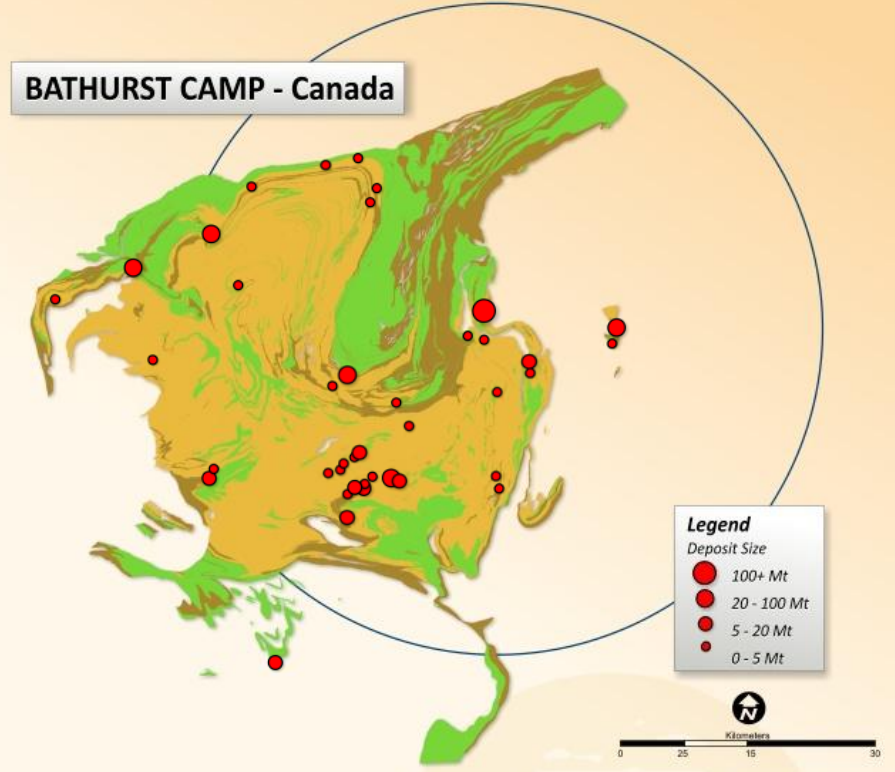


The Evolution of a World-Class VMS Camp

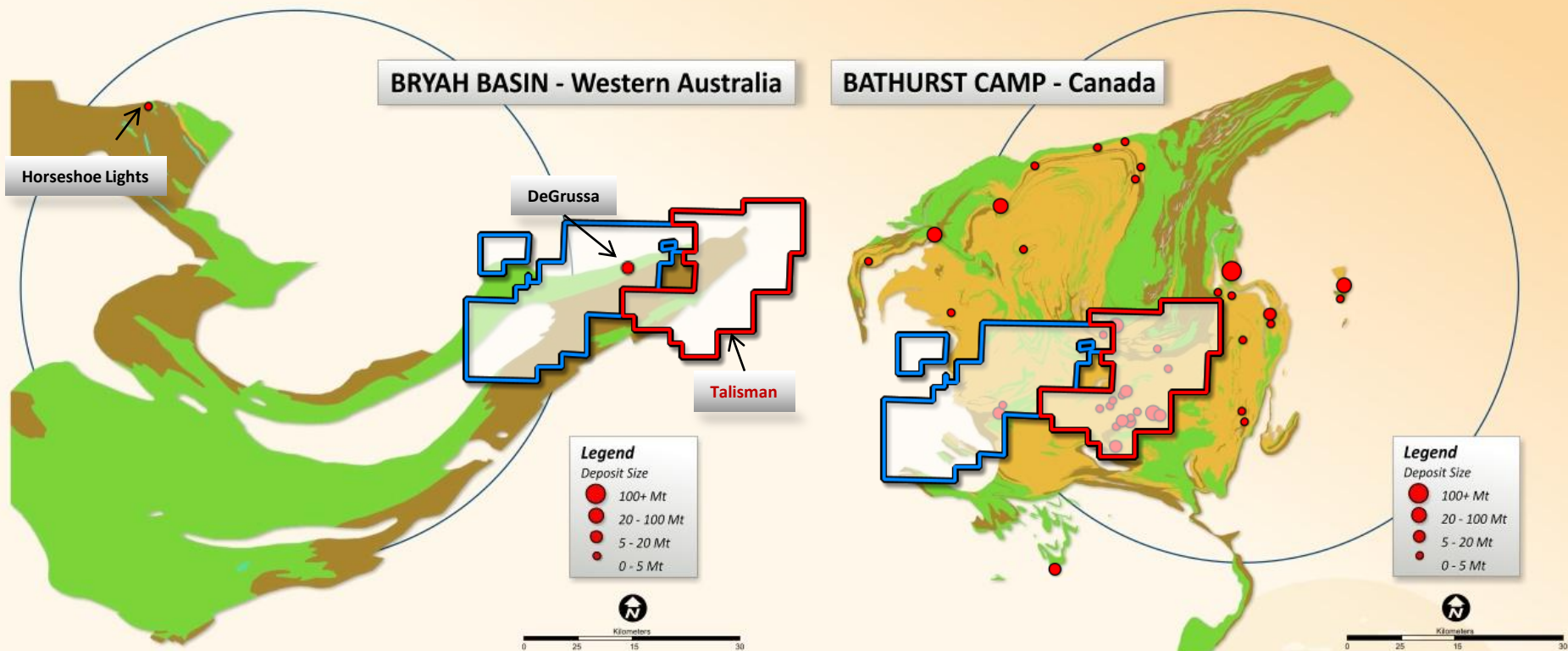
- 1938:
 - *1 Deposit*
- 1938 – 1952:
 - *2 Deposits*
- 1952 – 1954:
 - *6 Deposits*
- 1954 – 1956:
 - *11 Deposits*
- 1956 – 1958:
 - *5 Deposits*

- 1958 – 1960
 - *4 Deposits*
- 1960 – 1970
 - *6 Deposits*
- 1970 – 1980
 - *3 Deposits*
- 1980 – 1990
 - *3 Deposits*

TOTAL:
*41 Deposits
for 490.5Mt*



Doolgunna – The Emerging World-Class VMS Camp?



○ 1980's

- *Horseshoe Lights VMS deposit Developed*

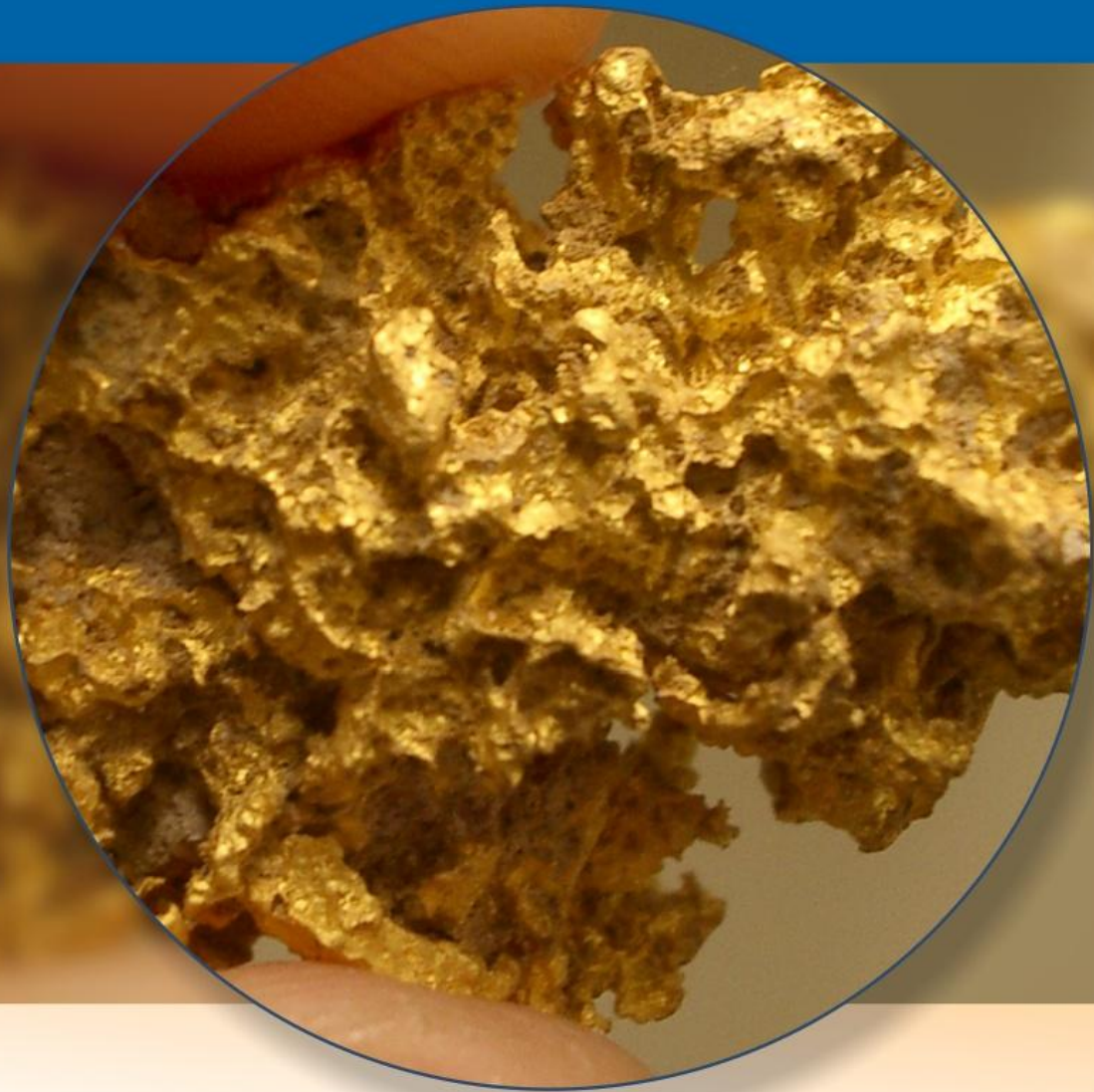
○ 2009

- *Sandfire DeGrussa/Cu-Au discovery*
 - *14.33Mt @ 4.6% Cu and 1.6g/t Au*

Springfield – Closing in on a Discovery

- Springfield is our flagship
- Geology unlocked
- Advancing from reconnaissance to targeted exploration
- Committed and well funded
- Closing in on a discovery





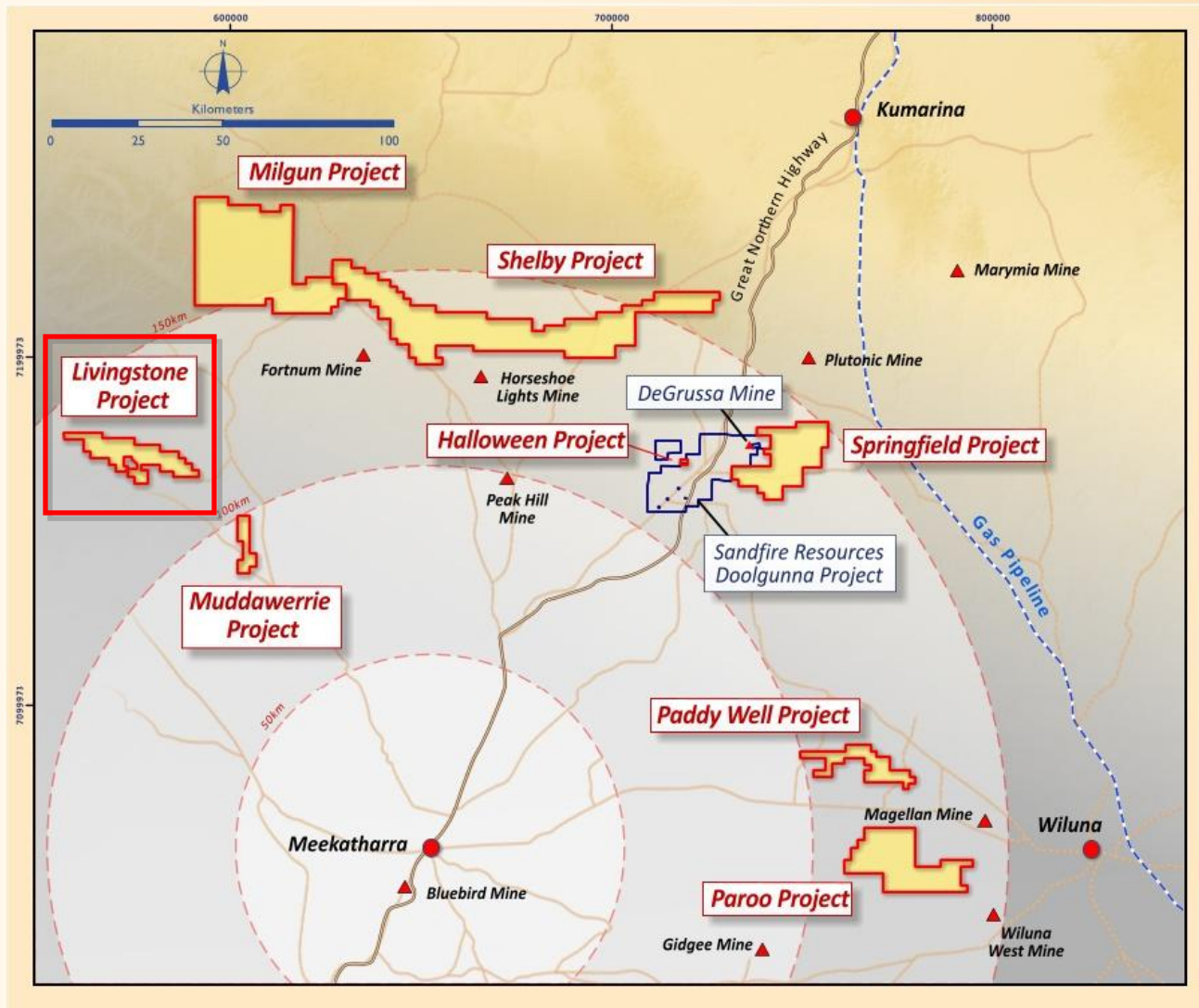
Establishing a Gold Business

Establishing a Gold Business

- Exploration portfolio broadened with two low cost gold focused project acquisitions in June 2011
 - *Livingstone*
 - *Muddawerrie*
- Developing a series of regionally significant large scale gold projects
- Targeting + 1M ounce gold deposits
- High priority drilling targets identified
- Drilling has commenced

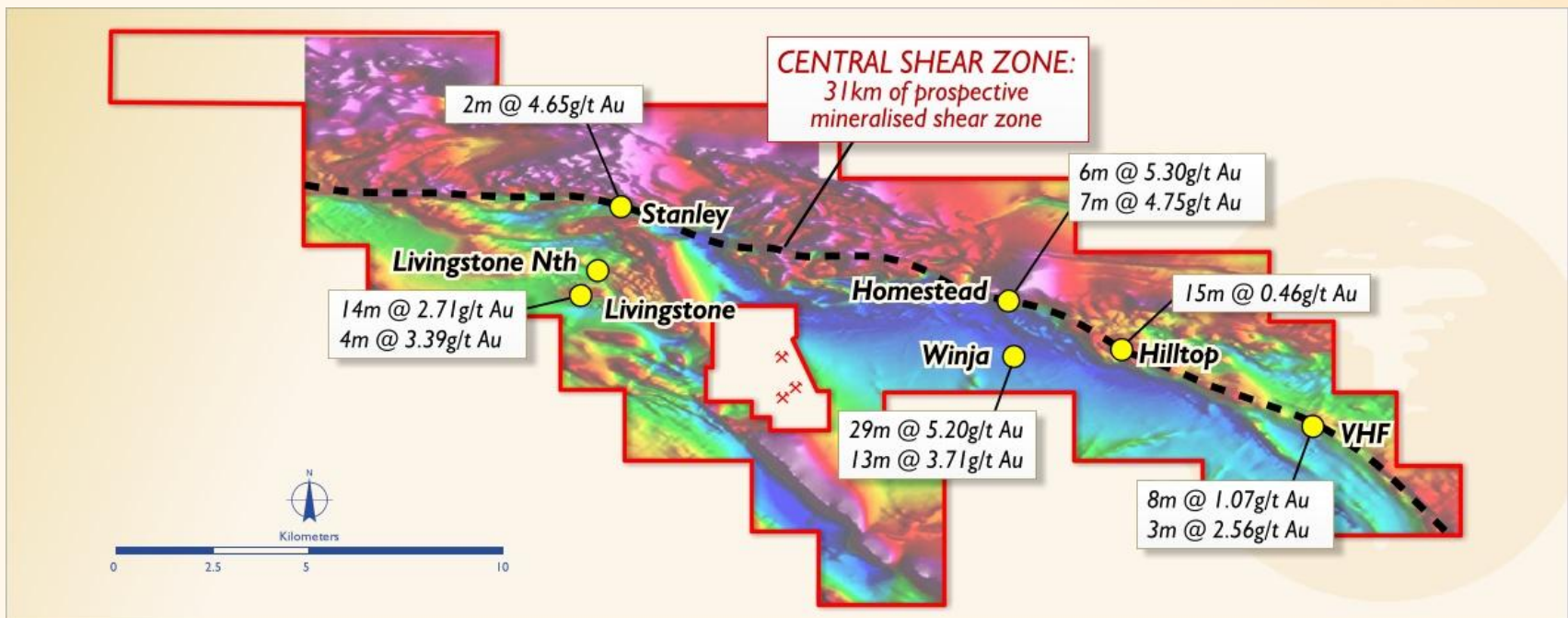


Establishing a Gold Business

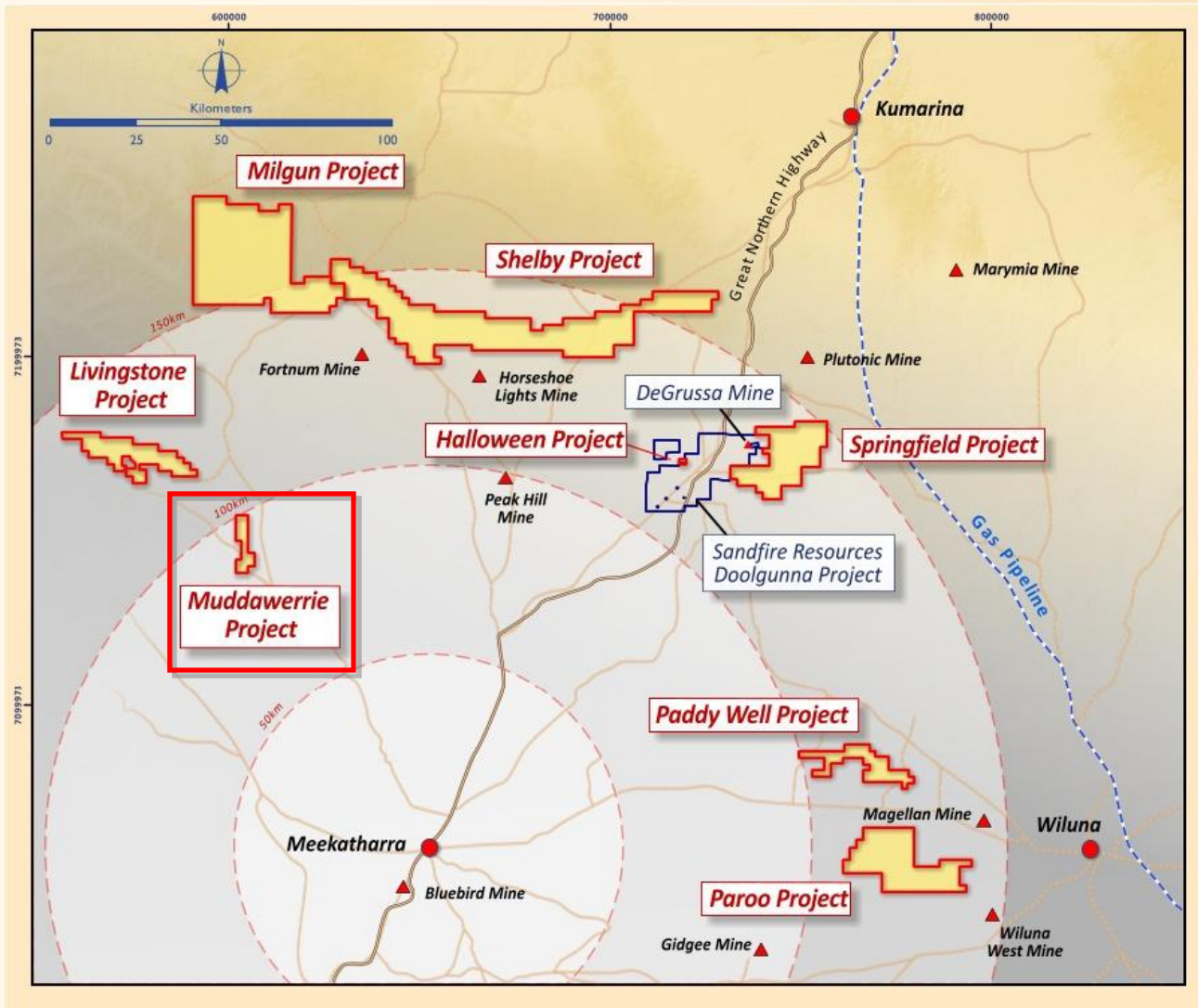


Livingstone

- Large scale, quality Proterozoic gold opportunity (+1M Oz)
- 31km strike length of the Central Shear Zone
- Demonstrated gold endowment
- Series of significant high-grade gold intercepts
- Mineralised trend has not been subject to systematic exploration
- Drilling in 2011

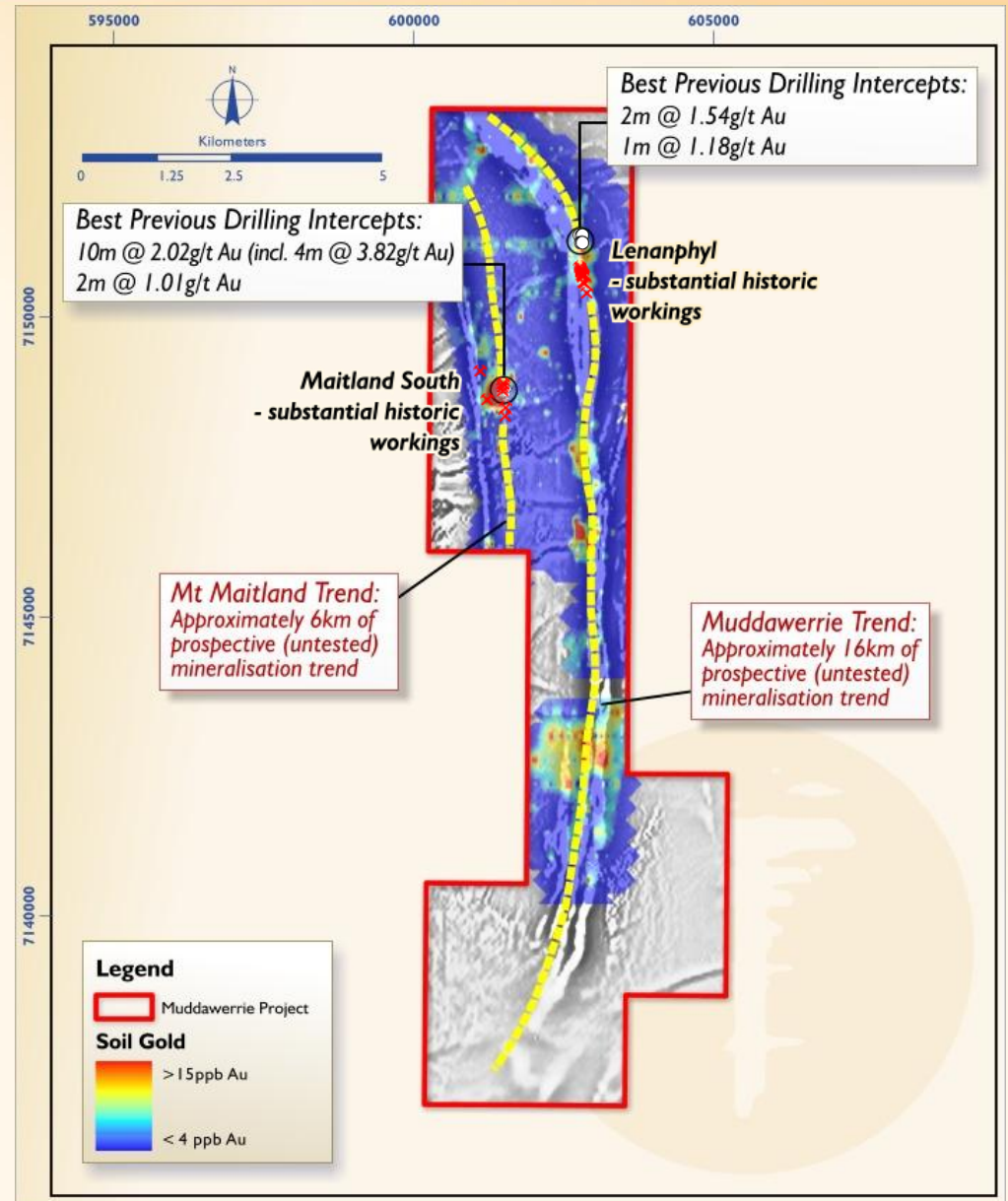


Establishing a Gold Business



Muddawerrie

- Highly prospective for banded iron formation and mafic hosted shear zone gold deposits
- Muddawerrie Trend - 16km strike
- Mt Maitland Trend - 6km strike
- Limited historic exploration
- Drilling program underway



Establishing a Gold Business

- Demonstrated ability to expand and diversify exploration portfolio
 - *Low cost acquisition*
 - *Large scale growth opportunities*
 - *Early initiation of exploration activities*
- Clear strategy to discover stand alone +1M Oz gold deposits

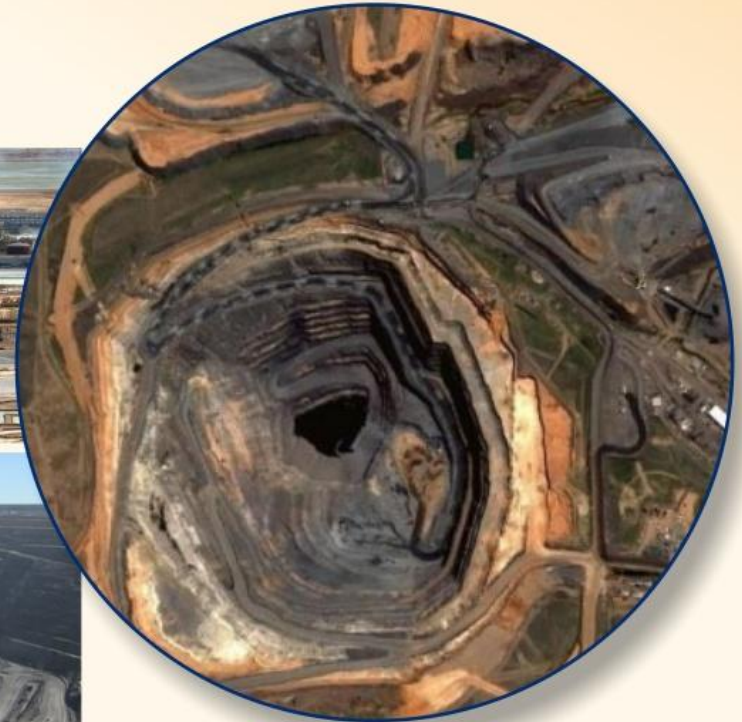




Gascoyne Projects – Thinking Big

Gascoyne Projects – Thinking Big

- Looking for world class, large scale mineral deposits
 - *Iron Oxide Copper Gold (IOCG)*
 - *Mafic-Ultramafic intrusive related Ni-Cu PGE*

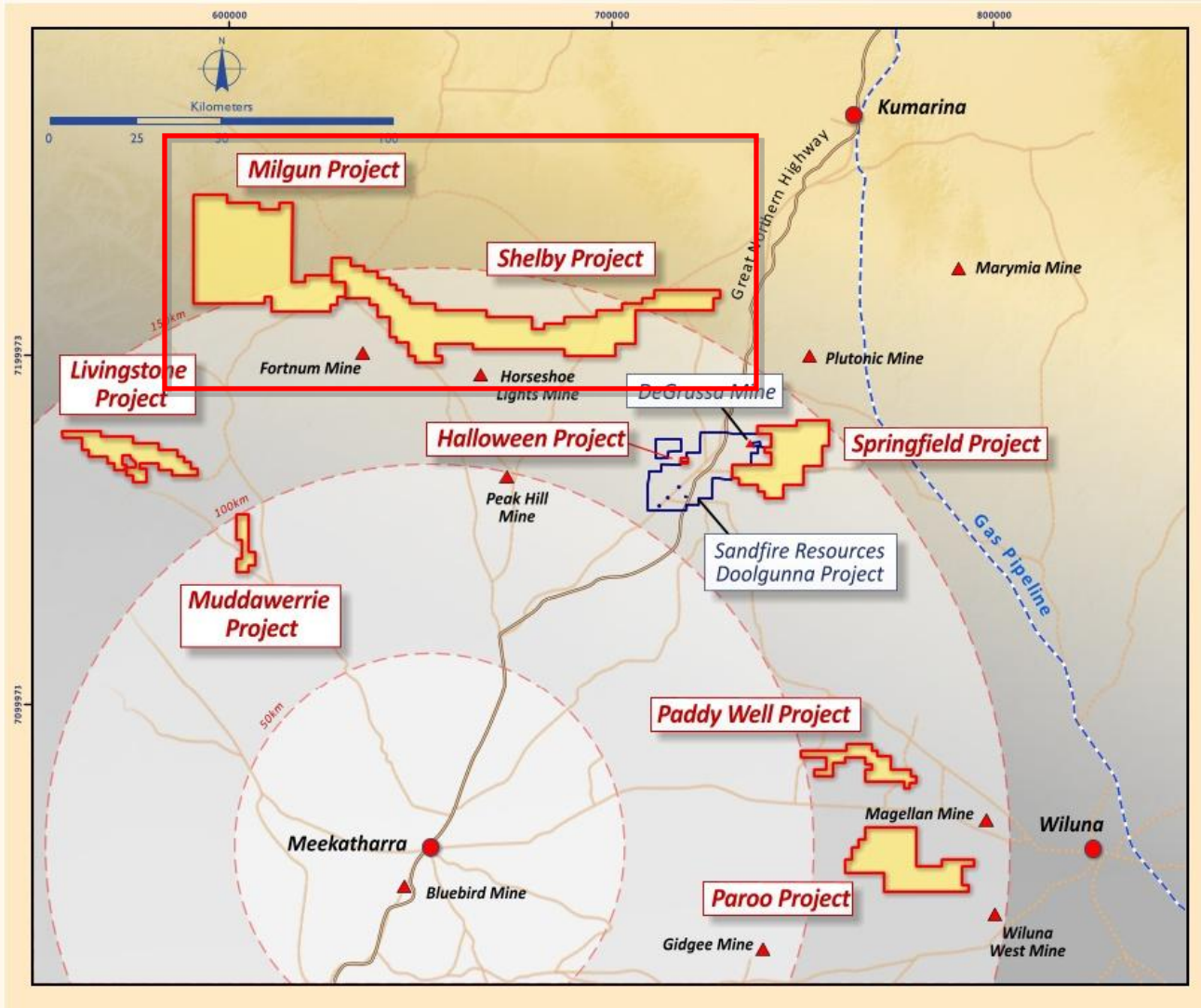


Gascoyne Projects – Thinking Big

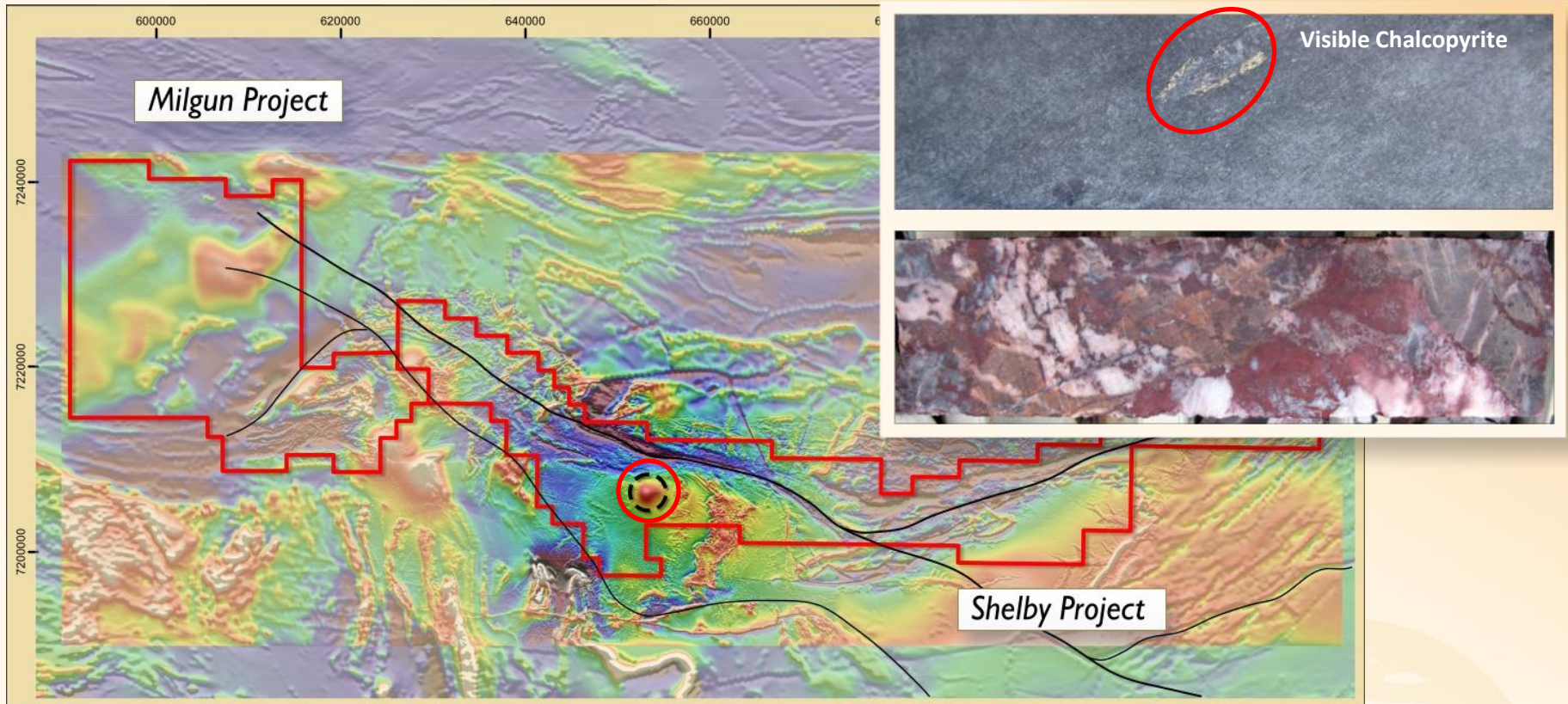
- Looking for world class, large scale mineral deposits
 - *Iron Oxide Copper Gold (IOCG)*
 - *Mafic-Ultramafic intrusive related Ni-Cu PGE*
- First mover opportunity
 - *Cheap and straight forward project entry*
 - *Application of new technology and new quality data sets to a potential new province*



Gascoyne Projects – Thinking Big



Gascoyne Projects – Thinking Big



- Major structures and magnetic targets identified in original data
- Detailed airborne magnetic and gravity data collected over project
- Key large scale targets identified
- Positive first phase drilling completed confirming IOCG style alteration with anomalous Cu/Au mineralisation
- Follow up drilling underway

Closing in on World Class Copper-Gold Deposits

- First mover exposure to potential world class, large scale mineral deposits
 - *Springfield Copper-Gold Project*
 - *High grade, High Value discovery opportunity*
 - *Gold Business*
 - *Targeting stand alone +1M Oz gold deposits*
 - *Gascoyne Projects*
 - *Game Changer*
- Cashed up and actively seeking new growth opportunities
- Management with a history of delivering





TALISMAN
MINING LIMITED
ASX:TLM



Closing in on world-class copper-gold deposits

Resources Rising Stars, September 2011