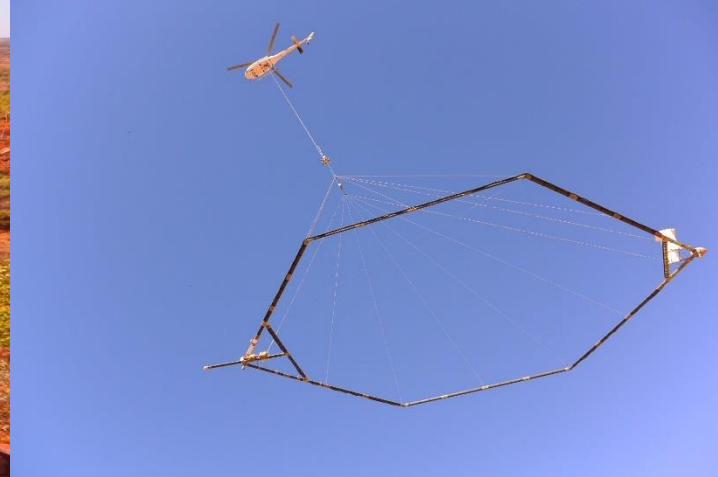




TODD RIVER RESOURCES

ASX Code: TRT



March 2018 – The Use of SkyTEM in the McArthur Basin
Will Dix, Kim Grey

Disclaimer & Competent Person's Statement



DISCLAIMER

- This presentation has been prepared by Todd River Resources Ltd. This document contains background information about Todd River Resources Ltd current at the date of this presentation. The presentation is in summary form and does not purport to be all inclusive or complete. Recipients should conduct their own investigations and perform their own analysis in order to satisfy themselves as to the accuracy and completeness of the information, statements and opinions contained in this presentation.
- This presentation is for information purposes only. Neither this presentation nor the information contained in it constitutes an offer, invitation, solicitation or recommendation in relation to the purchase or sale of Todd River Resources Ltd shares in any jurisdiction. This presentation may not be distributed in any jurisdiction except in accordance with the legal requirements applicable in such jurisdiction. Recipients should inform themselves of the restrictions that apply in their own jurisdiction. A failure to do so may result in a violation of securities laws in such jurisdiction.
- This presentation does not constitute investment advice and has been prepared without taking into account the recipient's investment objectives, financial circumstances or particular needs and the opinions and recommendations in this presentation are not intended to represent recommendations of particular investments to particular persons. Recipients should seek professional advice when deciding if an investment is appropriate. All securities transactions involve risks, which include (among others) the risk of adverse or unanticipated market, financial or political developments. To the fullest extent permitted by law, Todd River Resources Ltd, its officers, employees, agents and advisers do not make any representation or warranty, express or implied, as to the currency, accuracy, reliability or completeness of any information, statements, opinions, estimates, forecasts or other representations contained in this presentation. No responsibility for any errors or omissions from this presentation arising out of negligence or otherwise is accepted. This presentation may include forward looking statements. Forward looking statements are only predictions and are subject to risks, uncertainties and assumptions which are outside the control of Todd River Resources Ltd. Actual values, results or events may be materially different to those expressed or implied in this presentation.

COMPETENT PERSON'S STATEMENTS

This information in this announcement that relates to exploration results is extracted from ASX Announcements titled:

“Large Electromagnetic targets delineated McArthur Project” lodged on 20 November 2017

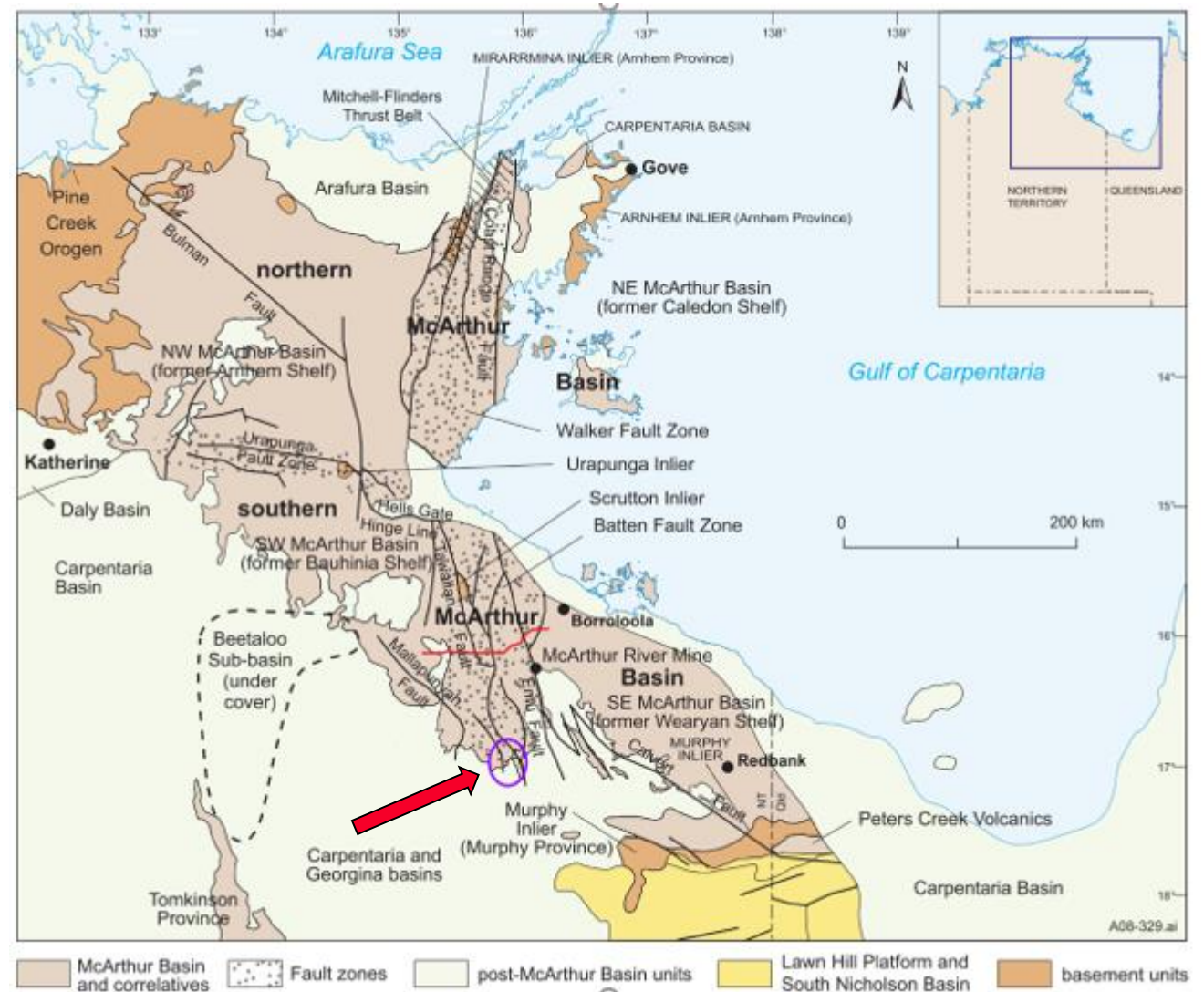
“Significant Channel Sample Results at McArthur Project” Lodged on 6 December 2017

which are available to view at www.trrltd.com.au and www.asx.com.au. The Company confirms that it is not aware of any new information or data that materially affects the information included in the original market announcement. The Company confirms that the form and context in which the Competent Person's findings are presented have not been materially modified from the original market announcements.

McArthur River Copper Project – Project Area



- Project area covers a region at the southern part of the basin between the Emu Fault and Mallapunyah Fault
- Targeting Cu in the Tawallah Group - basal Wologorang Fm
- 2 holes drilled by TNG in 2014 to follow up surface geochem – intersected anomalous Cu & Zn values
- Further mapping and sampling commenced in 2017 – widespread Cu anomalism
- Area identified for SkyTEM coverage and survey completed in late 2017

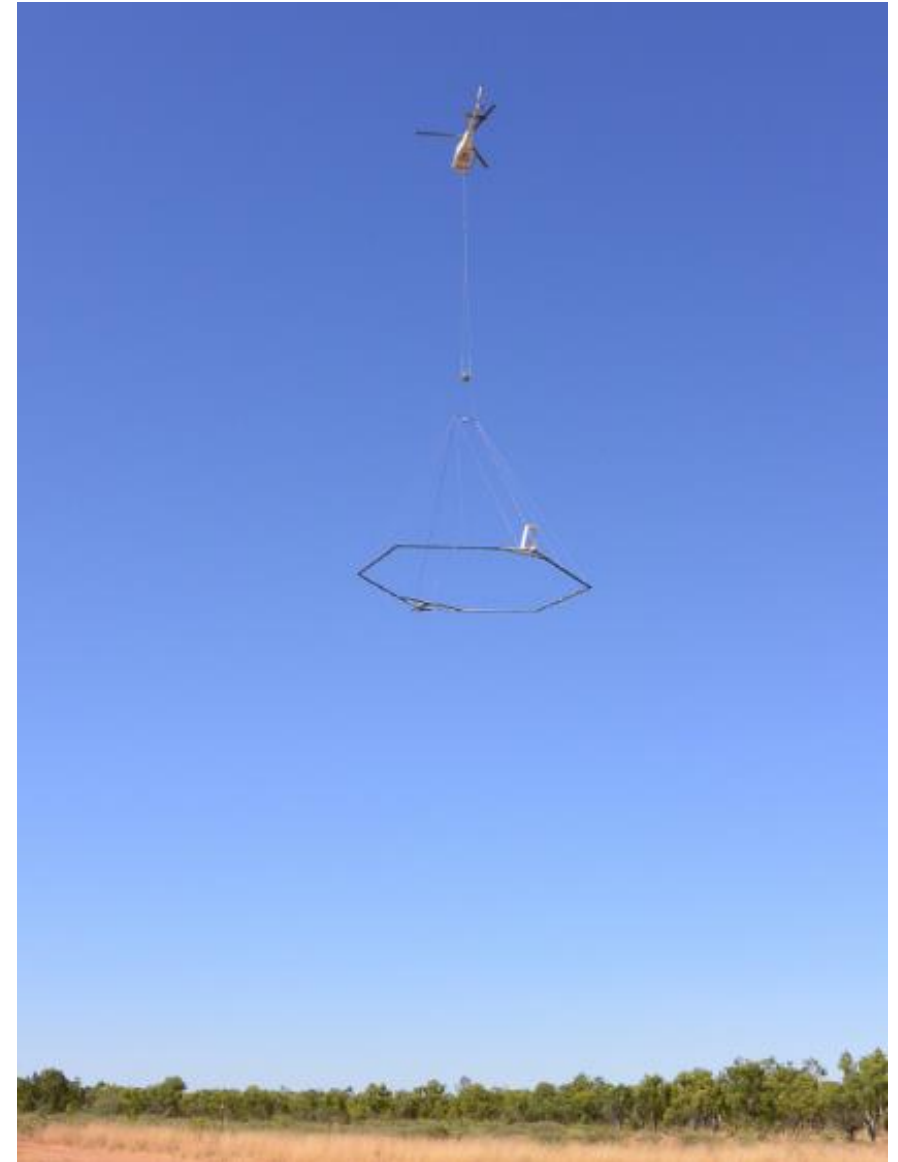


Ahmad et al 2013

McArthur River Copper Project – Why Airborne EM?



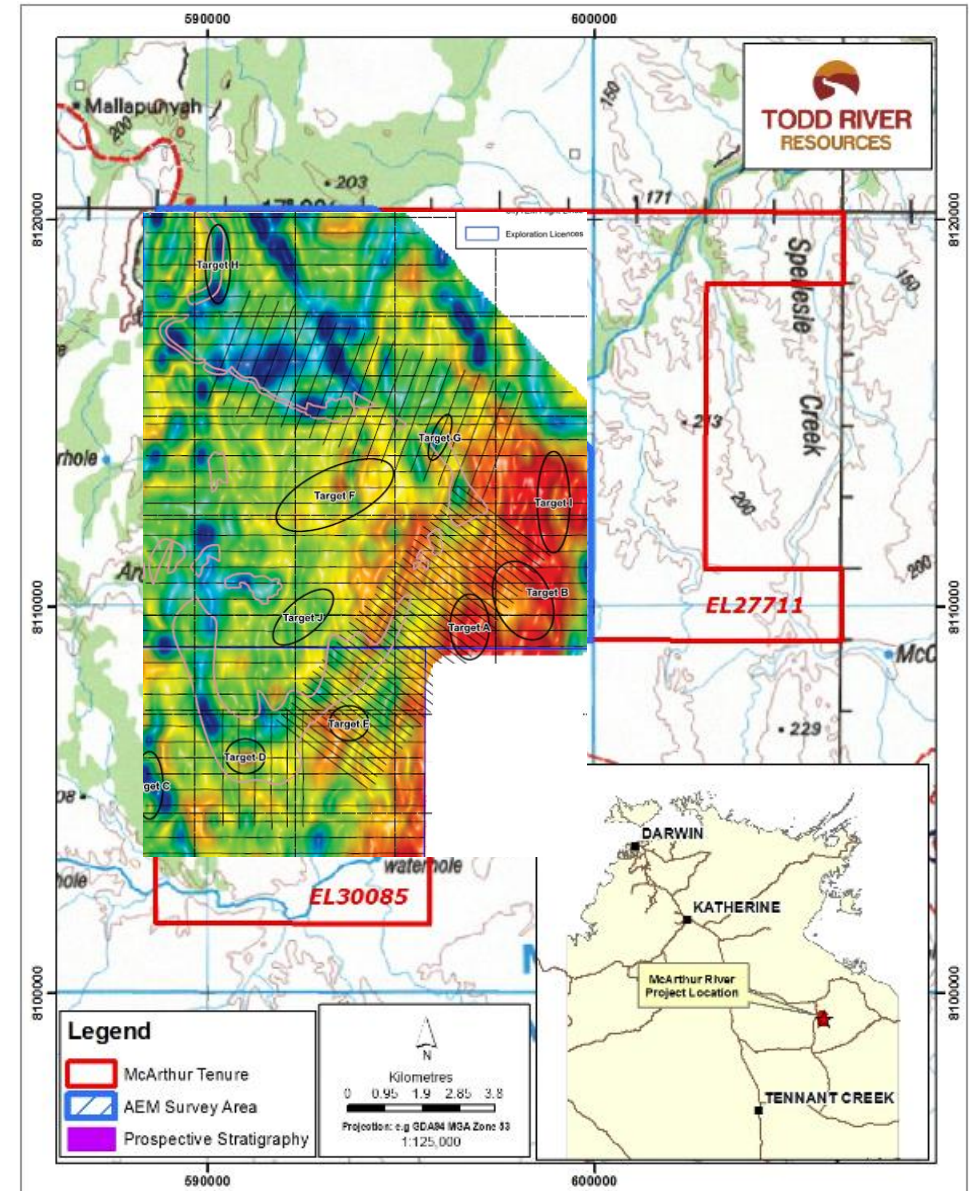
- Wanted to get best “bang for buck”
- Technology improved to the point it’s now “worth it”
- Provides cost effective, efficient coverage over large areas (600 line Km in 4 days)
- Geological context provided by mapping, sampling and drilling
- Targeted down dip extensions to the Wologorang stratigraphy
- Also interested in the Mallapunyah Formation



McArthur River Copper Project – SkyTEM survey



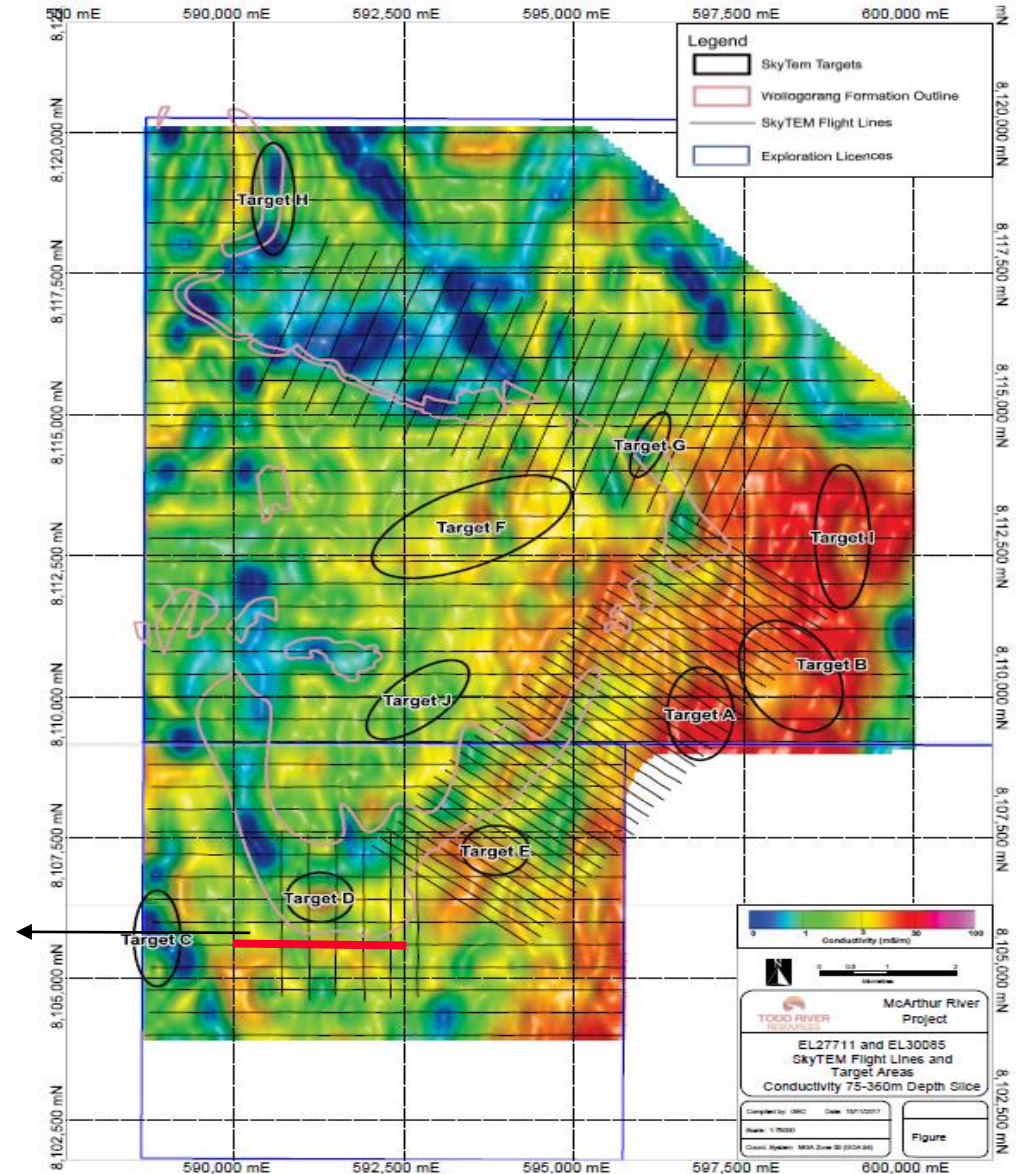
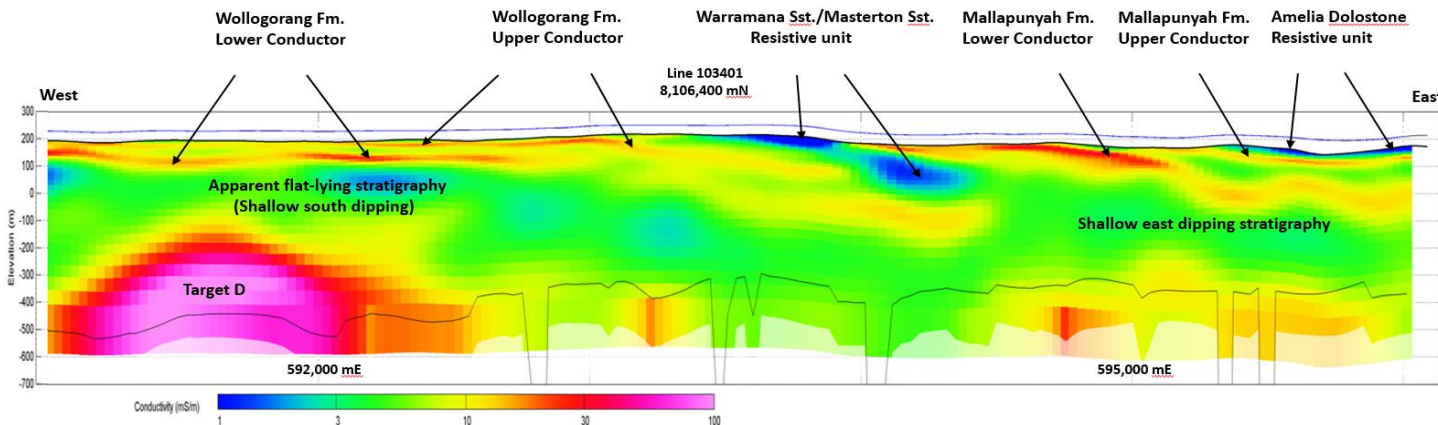
- SkyTEM survey collecting over 600 line Km of data during late 2017
- Helicopter-borne 16x28m acquisition loop
- Dual moment transient electromagnetic system
- 400m line spacing with 200m infill as required
- Outputs include:
 - *3D inversion model of conductivity*
 - *3D inversion model of magnetics*
 - *Depth slices and sections of conductivity and resistivity*
 - *3D conductivity wireframe representing shale units*



McArthur River Copper Project – Geophysical Outcomes



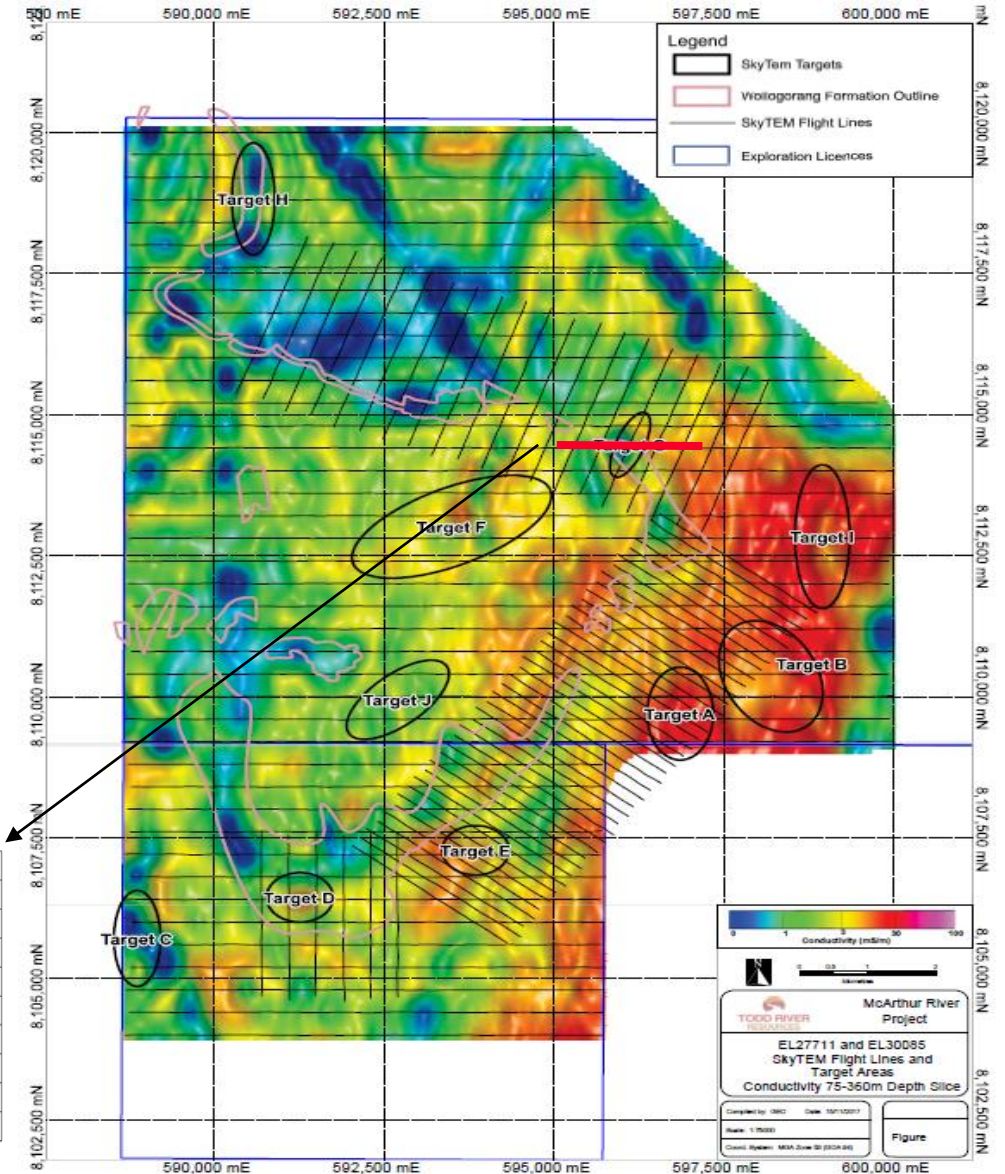
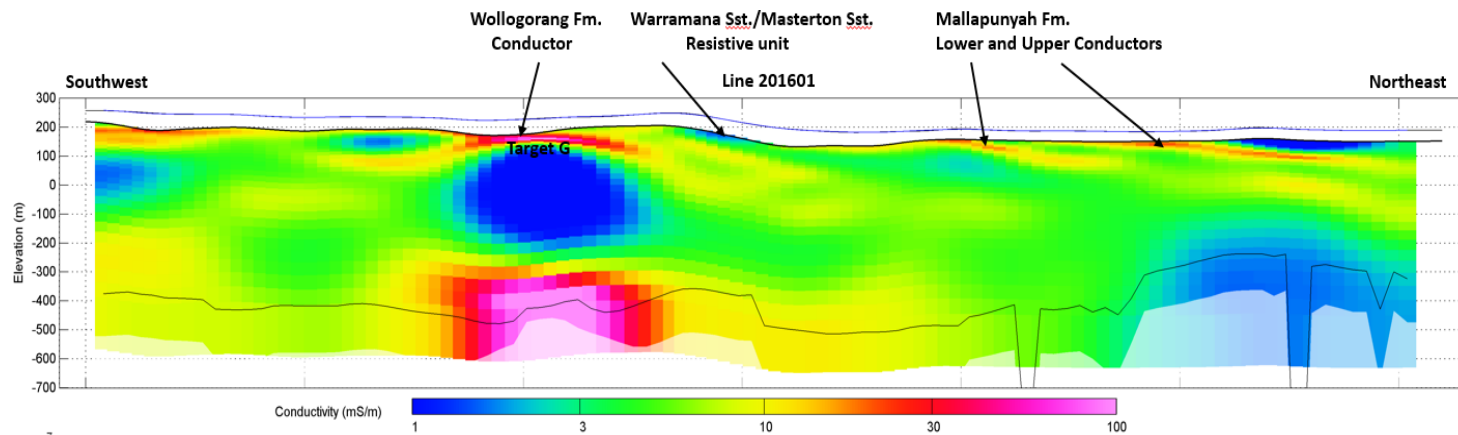
- Survey focussed on the Tawallah Group and in particular the Wologorang Formation
- Excellent tool for mapping out stratigraphy
- 5 Conductors identified in the Wologorang
- 3 large conductors between 80-400m depth within the Mallapunyah Formation
- 1 strong basement conductor at the base of the Settlement Creek Dolerite



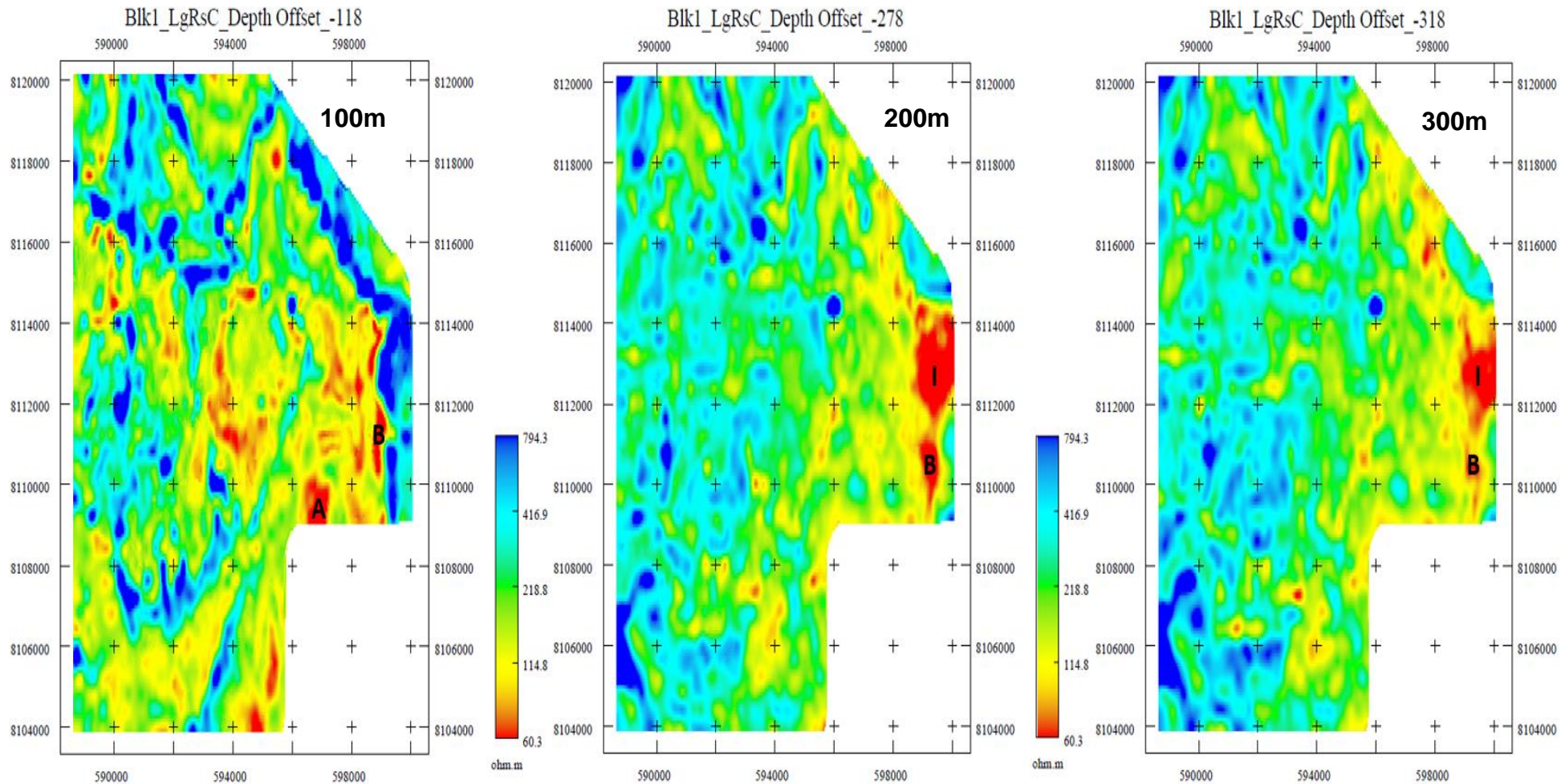
McArthur River Copper Project – Wologorang Formation



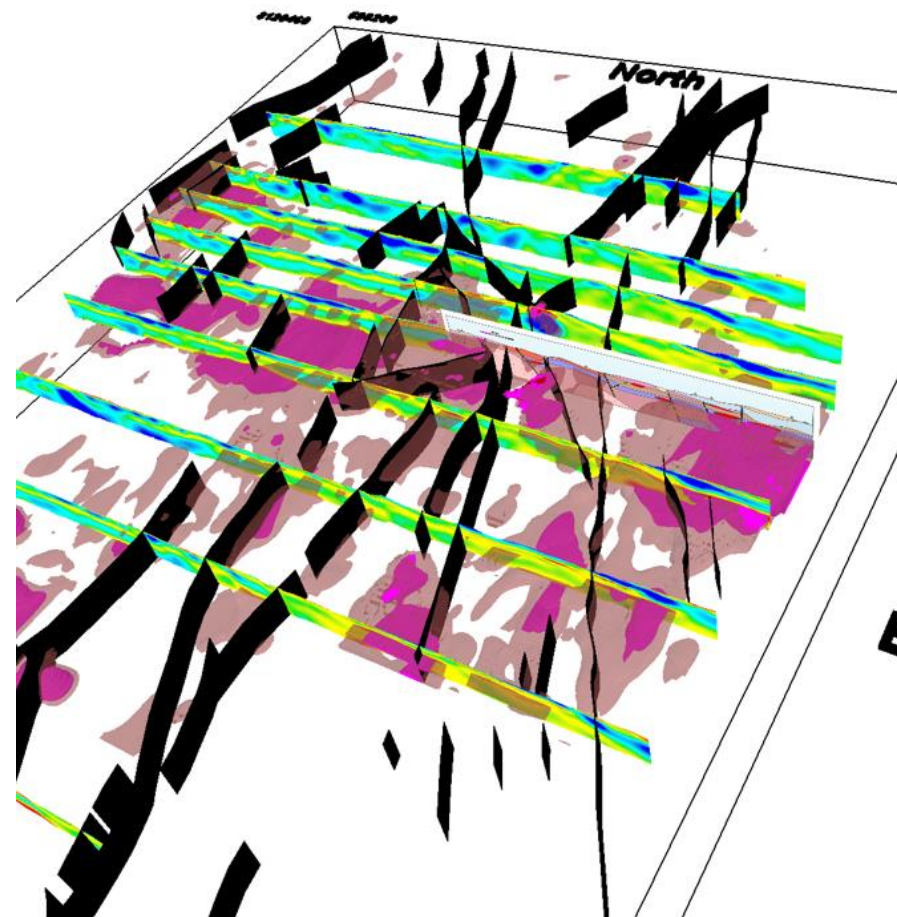
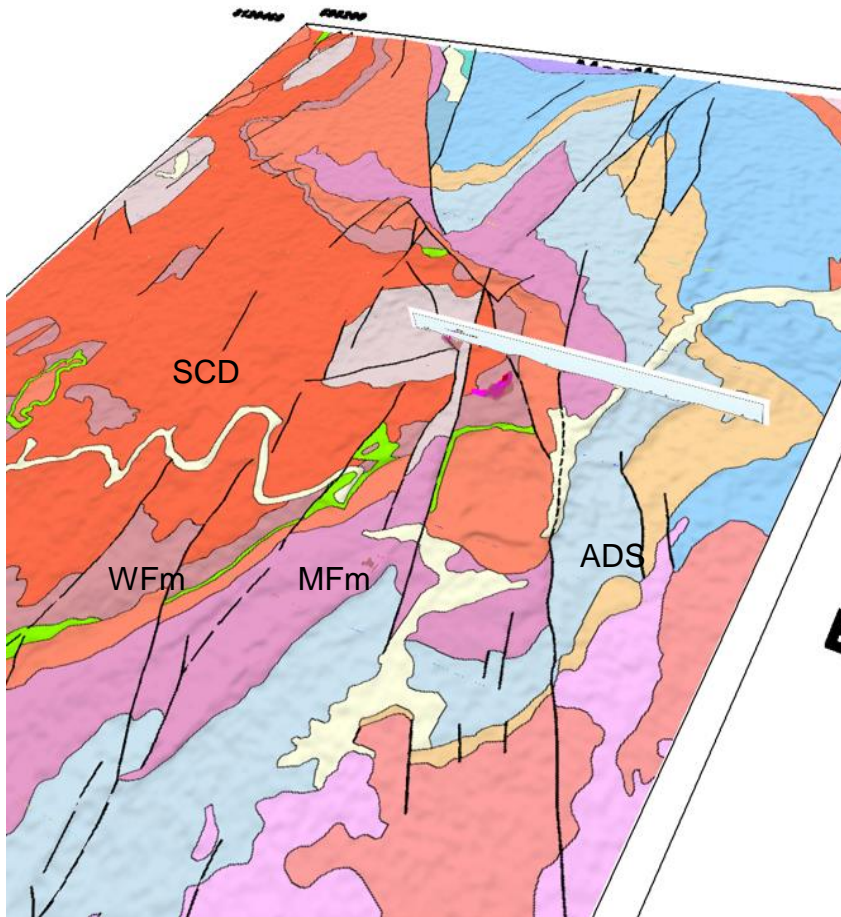
- High quality data allows clear stratigraphic and structural definition
- Strong shallow conductor for immediate drill testing
- Secondary copper mineralisation at surface over 200m of strike at the up-dip projection of the conductor
- Copper results at surface up to 44% Cu
- Multiple areas for follow up geophysics



McArthur River Copper Project – Mallapunyah Formation

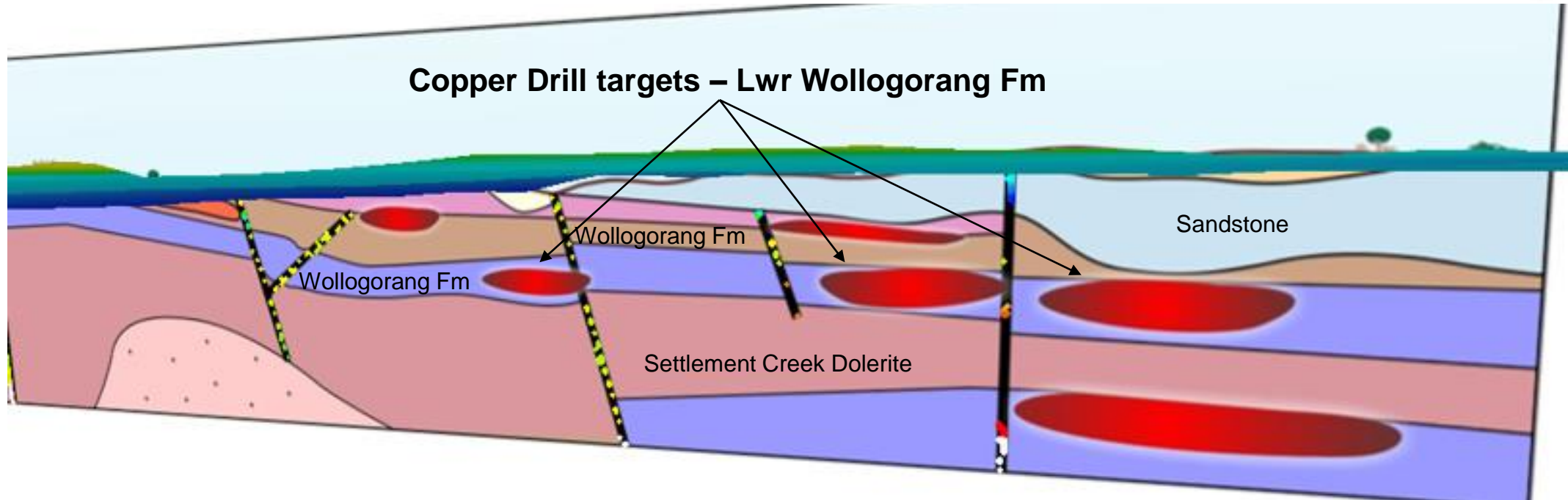
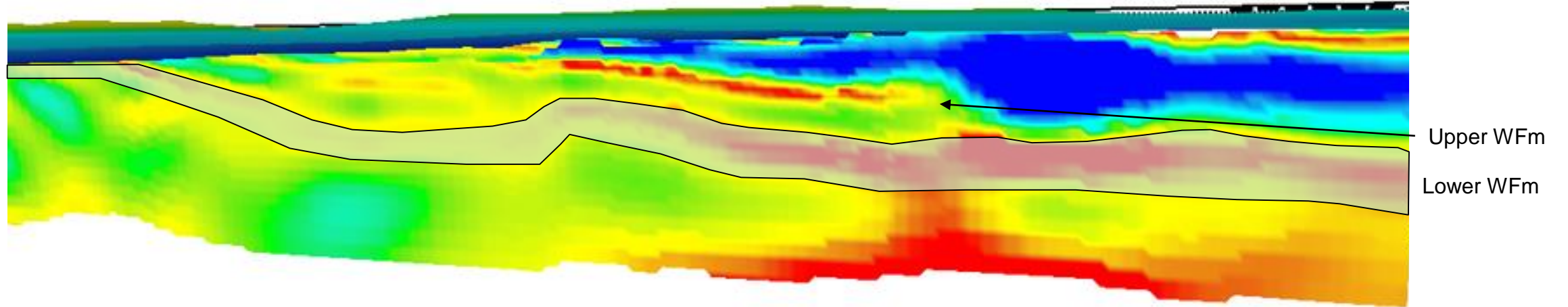


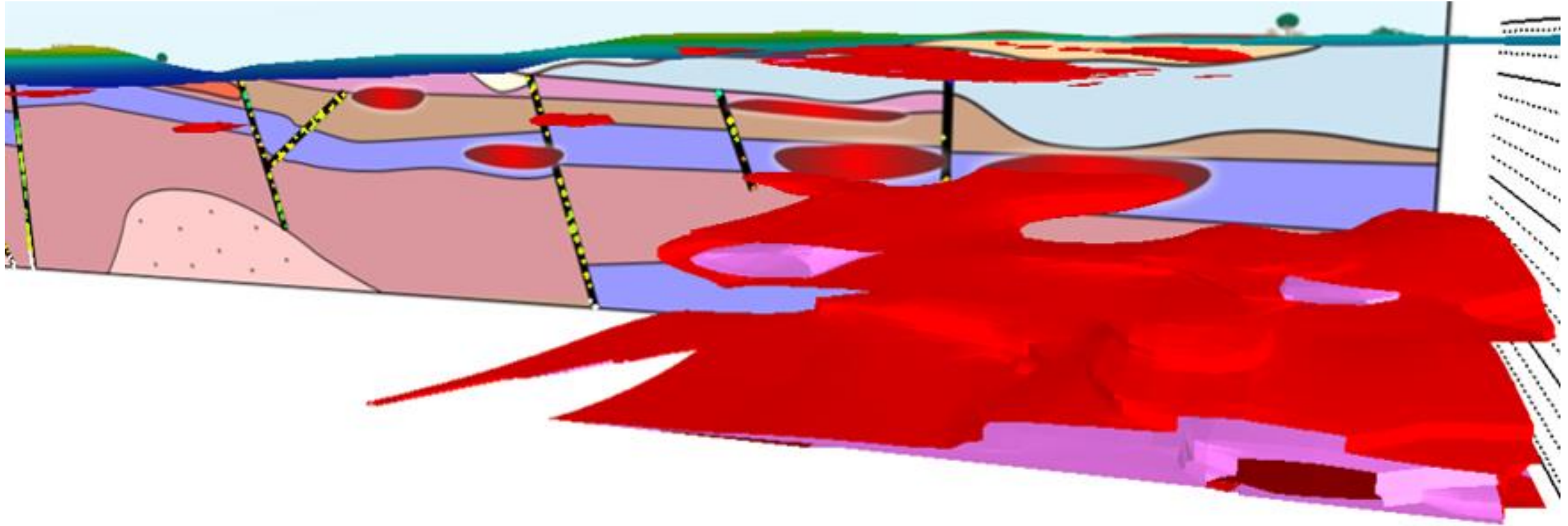
- Large conductors in the Mallapunyah on the eastern side of the survey area over 3 depth slices -



- Solid geology overlain on the SkyTEM data to constrain modelling
- Faults isolated and projected onto section

McArthur River Copper Project – 2D modelling



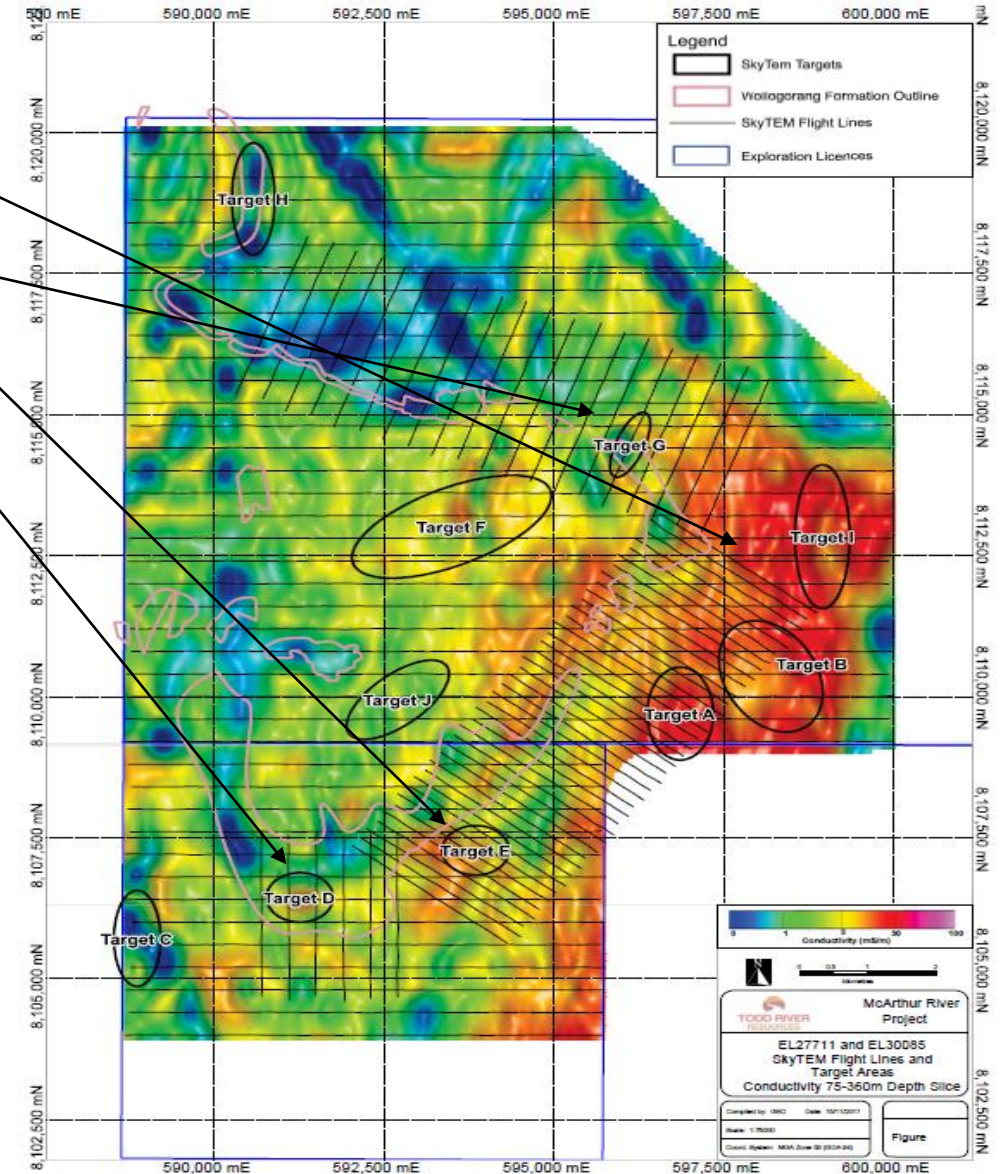


- *3D conductivity wireframes representing shale units modelled in isolation*
- *Within this target the hot spots for follow-up/drilling*

McArthur River Copper Project – Work Program 2018 and beyond...



- Further refinement of SkyTEM data over eastern Mallapunyah Formation conductors - **ongoing**
- Walk up drill targets on the Wologorang Formation conductors – **Q3 2018**
- Drill hole into deeper basement conductor – **Q3 2018**
- First pass exploration on new ground north and south of current tenure – **May/June**
- Follow up drilling **later 2018 or 2019**
- **Update – AGES 2019**



Project Portfolio – base metals and gold focus



Soldiers Creek

- Prospective for lithium, tin and tantalum, as well as other pegmatite-hosted and greissen related elements and minerals

Manbarrum

- MVT Zn-Pb-Ag
- +22Mt of JORC estimated resources*
- Near-term development opportunity

Goddards (application)

- Copper Prospect

Walabanba

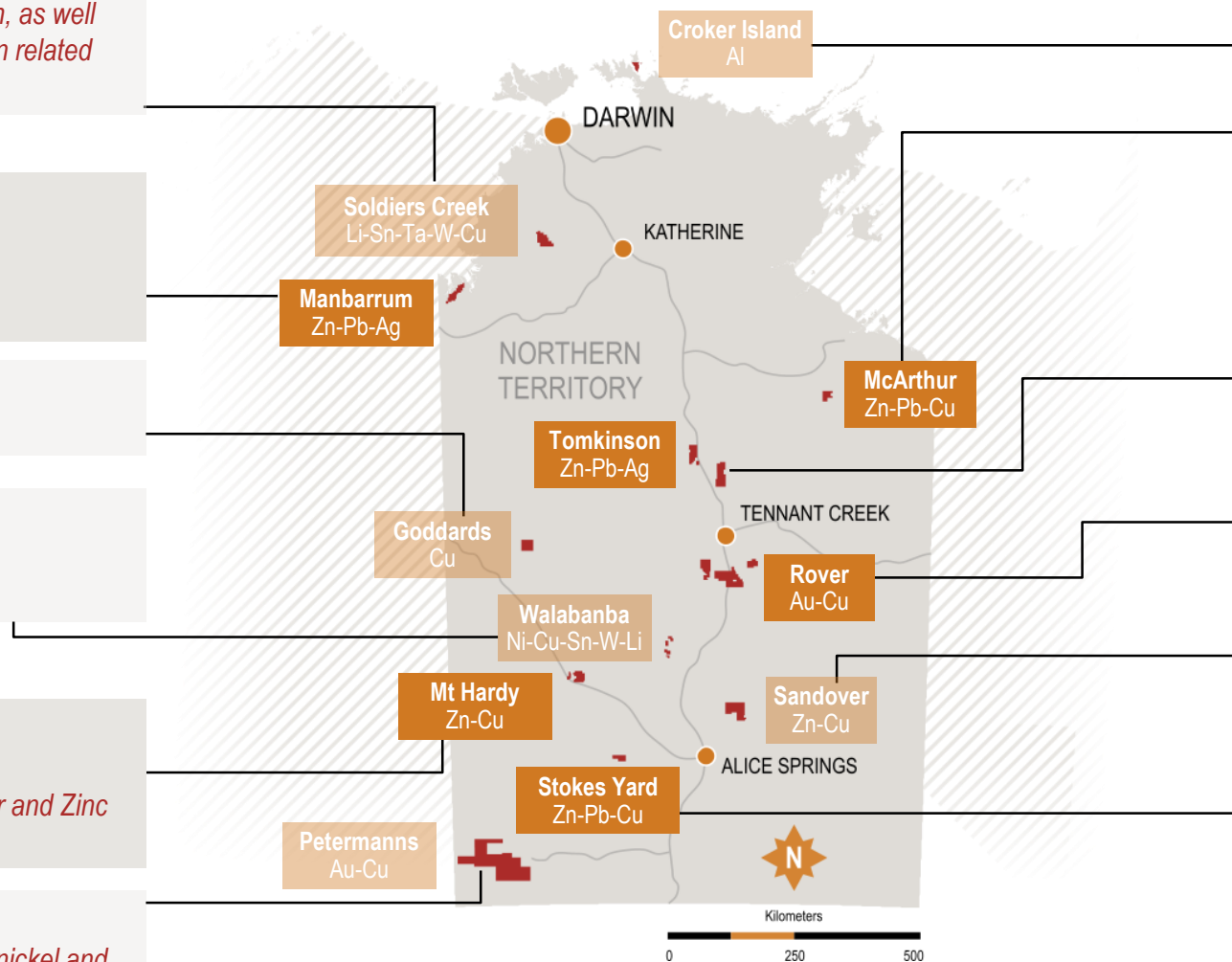
- Anningie pegmatite Li-Sn-W
- Anningie Tin field

Mt Hardy

- 17 EM targets, 7 drilled
- Significant thick intersections of Copper and Zinc
- Drill ready targets

Petermanns (applications)

- Prospective for gold, uranium, copper, nickel and base metals



Croker Island – (application)

- Prospective for bauxite and diamonds

McArthur

- 2.5km Zinc-Lead-Copper surface anomalous zone
- High quality SkyTEM anomalies to follow up
- Drill ready targets

Tomkinson

- Newly recognised province prospective for SEDEX-style base metals (Zn-Pb-Cu-Ag) similar to McArthur river

Rover

- Tennant Creek style high grade Au-Cu targets
- Prospective for gold, copper, bismuth and base metals

Sandover (applications)

- Located in highly-prospective Irindina Province
- Prospective for base metals, gold, rare earth and uranium

Stokes Yard

- Historical sampling results of up to 27.5% Zn, 7.5% Cu, 12.2% Pb and 130ppm Ag
- Near recent greenfields discovery at Bumblebee (ABM Resources/ Independence Group)

* Indicated 5.1Mt @ 1.94% Zn, 0.82% Pb and 5.82g/t Ag and inferred 17.4Mt @ 1.77% Zn, 0.33% Pb and 4.19g/t Ag. Full details (including those required under the 2012 JORC Code) are contained in the Prospectus



**TODD RIVER
RESOURCES**

ASX Code: TRT

THANK YOU

www.trrltd.com.au

