



UNLOCKING GOLD DISCOVERIES IN THE YANDAL BELT

RIU Sydney | May 6th 2025

ASX:YRL

yandalresources.com.au

Visit our InvestorHub at:
<https://investorhub.yandalresources.com.au>



Disclaimers

FORWARD LOOKING STATEMENT

This presentation has been prepared by Yandal Resources Ltd ("Yandal" or "YRL"). The information contained in this presentation is a professional opinion only and is given in good faith. Certain information in this document has been derived from third parties and though YRL has no reason to believe that it is not accurate, reliable or complete, it has not been independently audited or verified by YRL. This presentation is in summary form and does not purport to be all inclusive or complete. Recipients should conduct their own investigations and perform their own analysis in order to satisfy themselves as to the accuracy and completeness of the information, statements and opinions contained.

This is for information purposes only. Neither this nor the information contained in it constitutes an offer, invitation, solicitation or recommendation in relation to the purchase or sale of YRL shares in any jurisdiction. This does not constitute investment advice and has been prepared without taking into account the recipient's investment objectives, financial circumstances or particular needs and the opinions and recommendations in this presentation are not intended to represent recommendations of particular investments to particular persons. Recipients should seek professional advice when deciding if an investment is appropriate. All securities transactions involve risks, which include (among others) the risk of adverse or unanticipated market, financial or political developments.

To the fullest extent permitted by law, YRL, its officers, employees, related bodies corporate, agents and advisers do not make any representation or warranty, express or implied, as to the currency, accuracy, reliability or completeness of any information, statements, opinions, estimates, forecasts or other representations contained in this presentation. No responsibility for any errors or omissions from this arising out of negligence or otherwise is accepted.

Any forward-looking statements included in this document involve subjective judgment and analysis and are subject to uncertainties, risks and contingencies, many of which are outside the control of, and may be unknown to YRL. In particular, they speak only as of the date of this document, they assume the success of YRL's strategies, and they are subject to significant regulatory, business, competitive and economic uncertainties and risks. Actual future events may vary materially from the forward-looking statements and the assumptions on which the forward-looking statements are based. Recipients of this document are cautioned to not place undue reliance on such forward-looking statements.

COMPETENT PERSONS STATEMENT

The information in this document that relates to Exploration Results, geology and data compilation is based on information reviewed or compiled by Mr Chris Oorschot, a Competent Person who is a Member of The Australasian Institute Geoscientists. Mr Oorschot is the Managing Director of the Company, is a full-time employee and holds shares and options in the Company. Mr Oorschot has sufficient experience which is relevant to the style of mineralisation and type of deposit under consideration and to the activity which he is undertaking to qualify as a Competent Person as defined in the 2012 Edition of the 'Australasian Code for Reporting of Exploration Results, Mineral Resources and Ore Reserves'. Mr Oorschot consents to the inclusion in this announcement of the matters based on this information in the form and context in which it appears.

The information in this announcement that relates to the Flushing Meadows, Mt McClure and Gordons Dam Mineral Resource Estimates is based on information compiled and generated by Andrew Bewsher, an employee of BM Geological Services Pty Ltd ("BMGS"). Both Andrew Bewsher and BMGS hold shares in the company. BMGS consents to the inclusion, form and context of the relevant information herein as derived from the original resource reports. Mr Bewsher has sufficient experience relevant to the style of mineralization and type of deposit under consideration and to the activity which is being undertaken to qualify as a Competent Person as defined in the 2012 Edition of the JORC 'Australasian Code for Reporting of Exploration Results, Mineral Resources and Ore Reserves'.

YRL confirms that it is not aware of any new information or data that materially affects the information included in the original market announcements. The company confirms that the form and context in which the Competent Person's findings are presented have not been materially modified from the original market announcements.

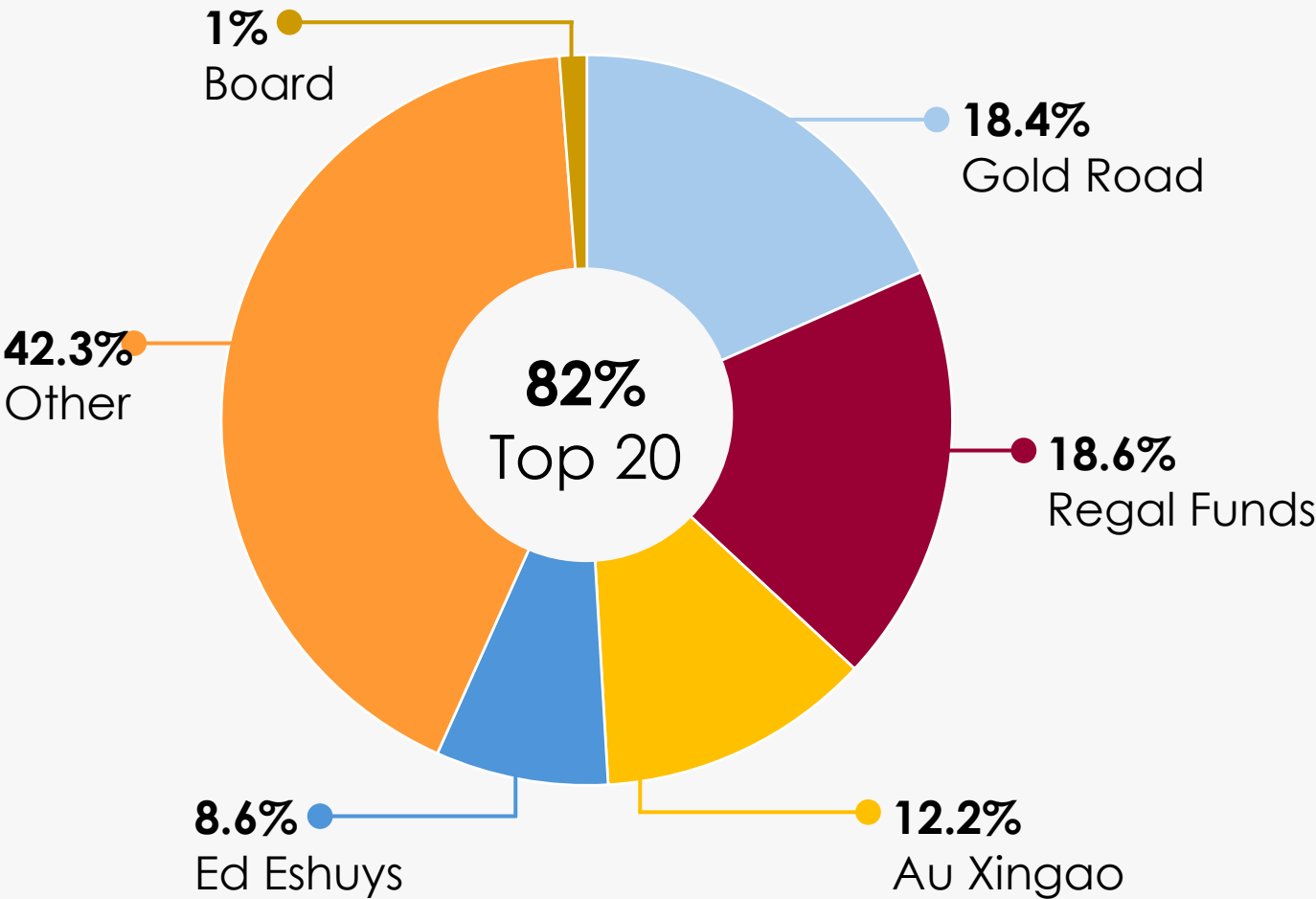
UNLOCKING GOLD DISCOVERIES

- ✓ Emerging Siona gold discovery within the New England Granite – *Just the start*
- ✓ Demonstrated the potential for further near-term discoveries – *Caladan / New England Granite / Arrakis*
- ✓ Strategically located projects – *Numerous processing options within 100km*
- ✓ A technically driven, systematic approach to exploration – *Recent results demonstrate that YRL strategies are effective and maturing*
- ✓ Well-funded to progress exploration into 2025 – *with circa \$7.1M in cash*



CAPITAL STRUCTURE

Share Price ¹	Shares on Issue
\$0.14	309.2M
Options	Market Cap ¹
38.1M	~43.3M
Cash ²	Enterprise Value
~7.1M	~36.2M



BOARD & MANAGEMENT TEAM



Chris Oorschot
Managing Director & CEO

BSc (Hons 1st Class), MAIG, MSEG

- Exploration Geologist with +15yrs experience predominantly in the Western Australian gold sector
- Expertise in complex stratigraphic environments and structurally controlled Archaean mineralised systems



Greg Evans
Non-Executive Chair

BCom, DipApp Fin, GAICD

- +25yrs in investment banking in the mining and resources sector
- Corporate and Financial Advisor to public companies and large private business owners across multiple sectors



Katina Law
Non-Executive Director

BCom, FCPA, MBA, GAICD

- +30yrs experience in the mining industry covering corporate and site-based finance roles across several continents
- Has held senior positions at Newmont Mining Corporation's head office in Denver, USA



Eduard Eshuys
Strategic & Technical Advisor

BSc, FAusIMM, FAICD

- Highly successful explorer and gold industry executive
- Led teams in discovery of numerous gold deposits including Plutonic, Jundee and Bronzewing
- Former Executive Chairman of DGO Gold



Owen Casey
Exploration Manager

BSc (Hons), MAIG

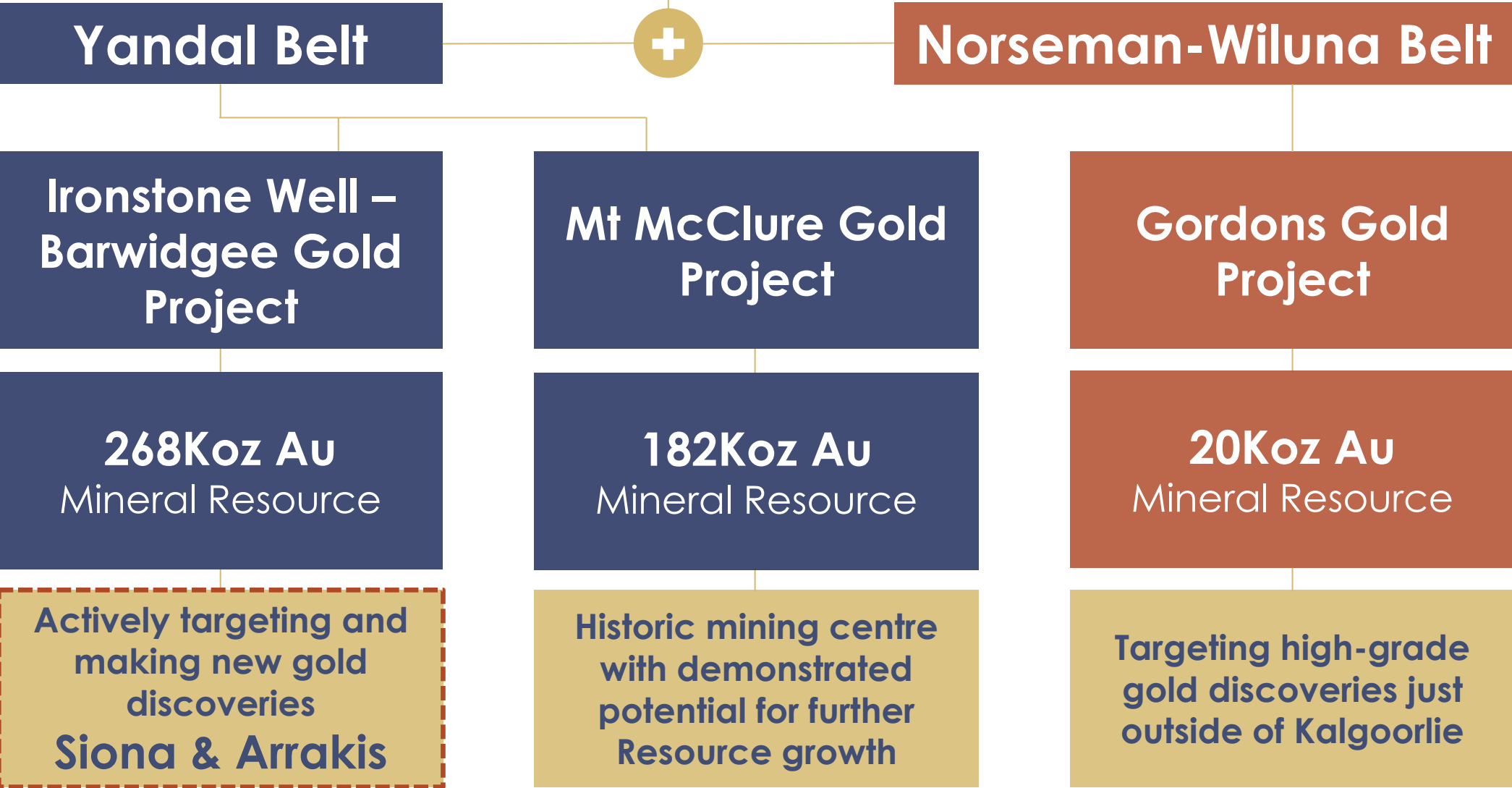
- Exploration geologist with + 14yrs experience predominantly in the Western Australia gold sector
- Strong background in WA gold exploration and project development

1. Based on the closing share price of \$0.145 at close of trade on the 5th of May 2025
2. As of 31st March 2025

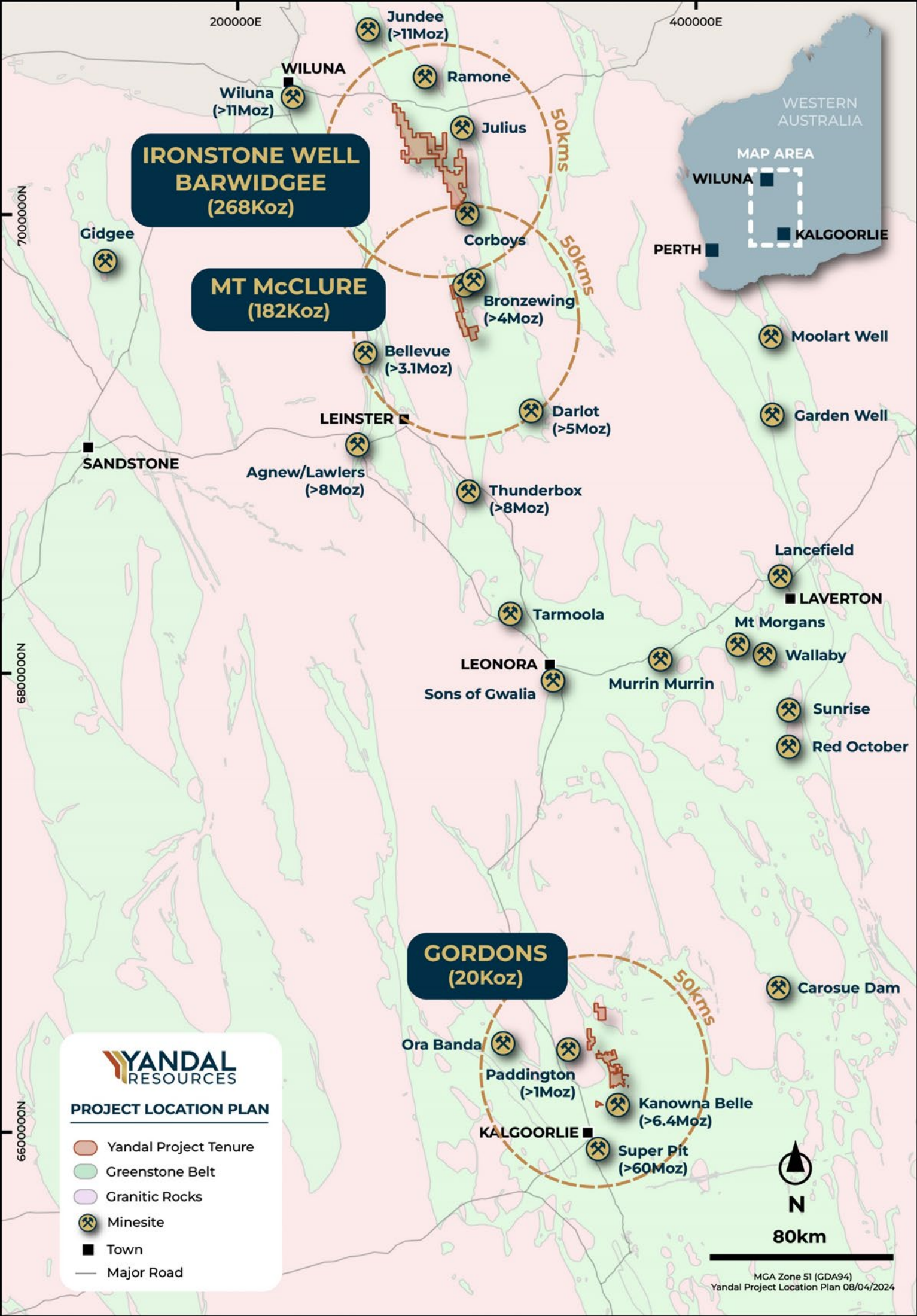
WHAT IS YANDAL RESOURCES?

A gold focused exploration company

Three strategically located projects in Tier-1 gold belts of Western Australia



All projects close to active processing facilities



IRONSTONE WELL-BARWIDGEE PROJECT

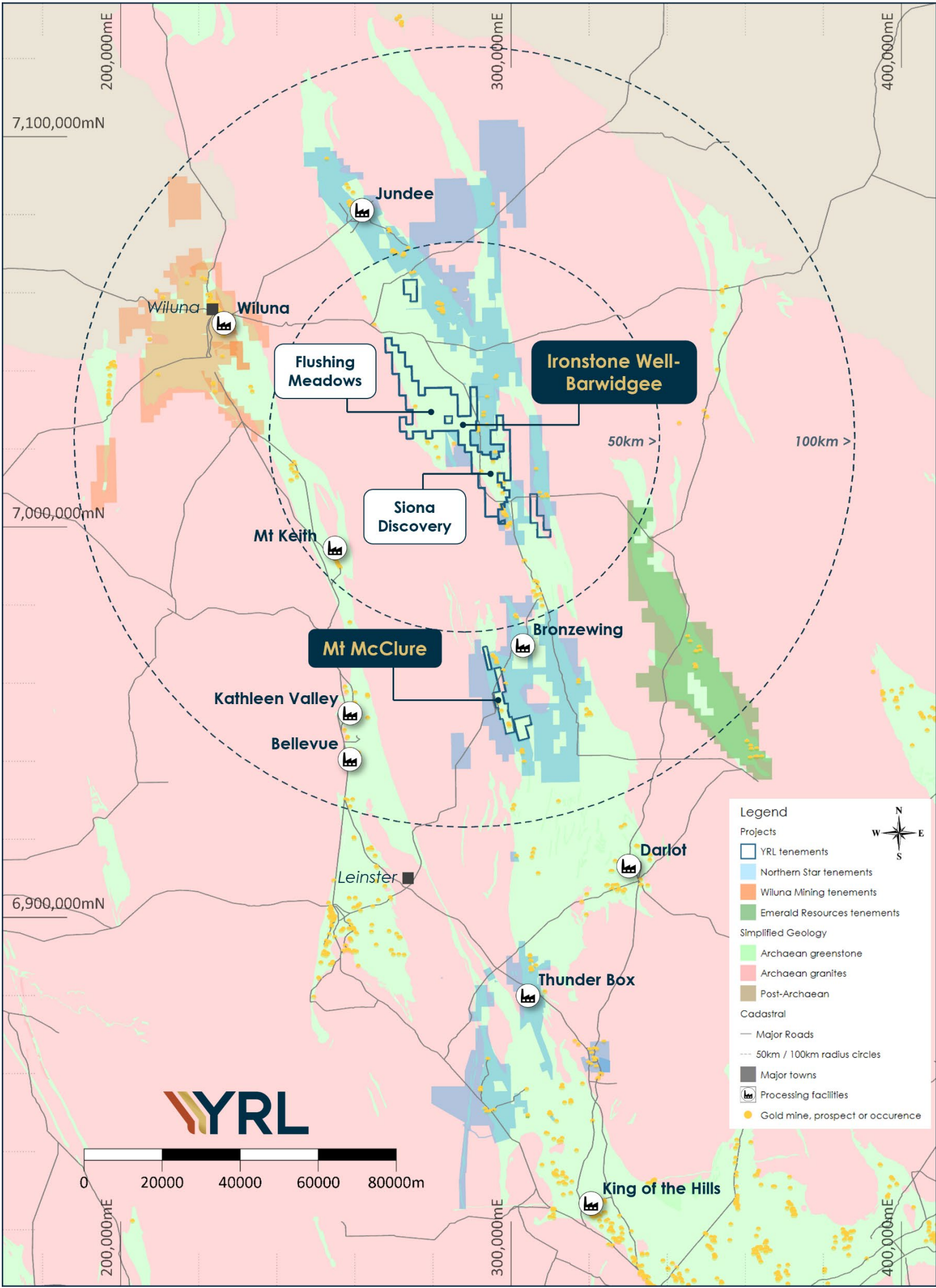
IWB Prioritised in the 2024 & 2025 Exploration Strategy

Excellent Geological Setting
Fertile first and second order structures
Area of 376.6km² covering **53km** of strike

Underexplored
Major structures poorly defined
Transported cover and complex regolith

Existing Mineral Resource
Flushing Meadows 268Koz - Located on granted mining lease
Potential Resource growth following recent discoveries

Strategic Location
Numerous producers within the region - Close to existing processing facilities – Low jurisdictional risk in Western Australia



IRONSTONE WELL & BARWIDGEE

GENUINE DISCOVERIES

Strategy is delivering exploration success

Siona Gold Discovery

Late October 2024

Hosted by the New England Granite

Arrakis Prospect Defined

January 2025

Mineralisation identified within the Caladan target area

Large-Scale Potential

Early discovery phase

Host New England Granite is largely untested

Rare Opportunity

Early AC results demonstrate potential

Advancing Discoveries & Exploration

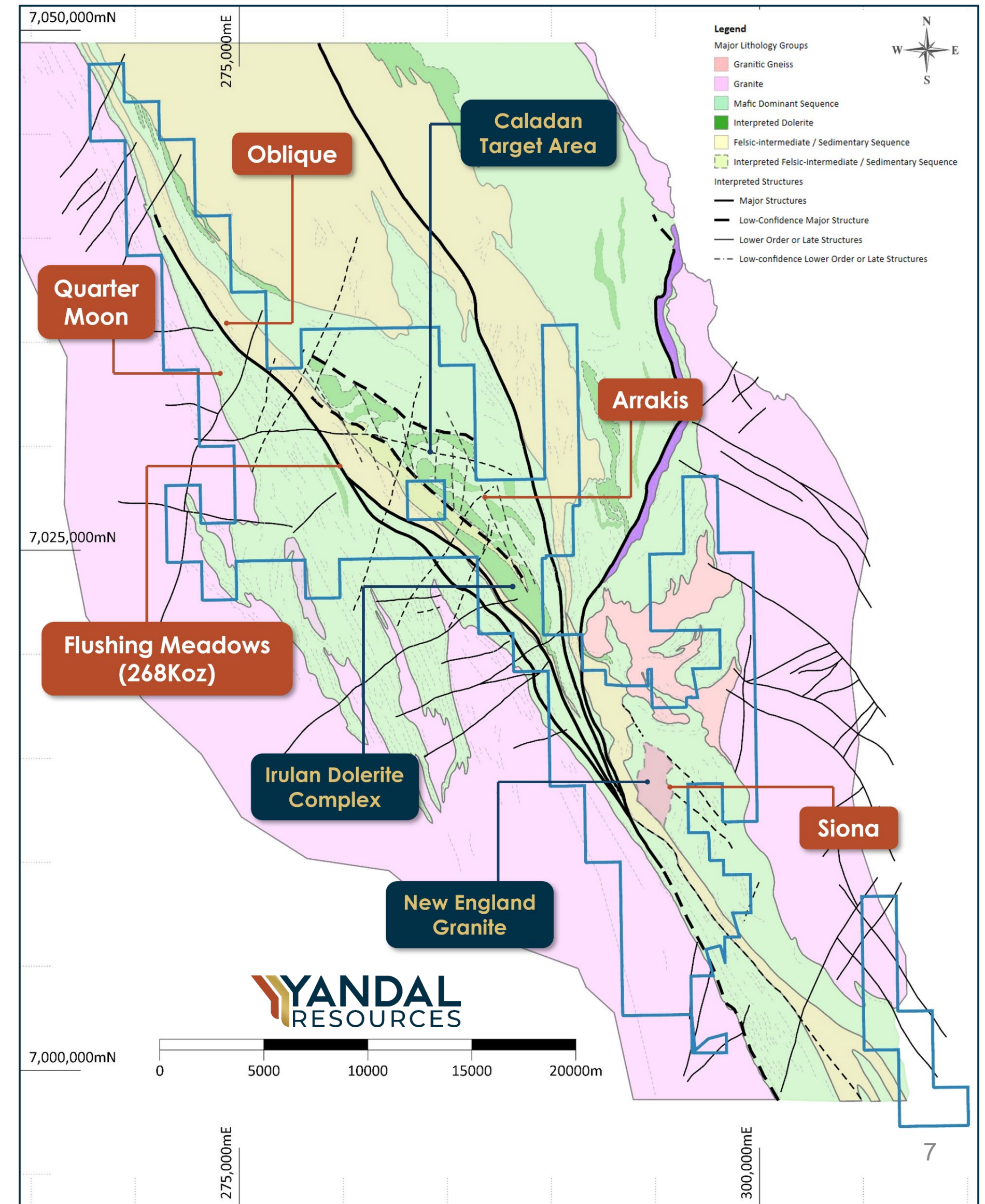
RC and Diamond Drilling

Infill ground gravity data acquired

Follow-up RC complete

Large-scale AC test scheduled

Targeting large-scale discoveries



NEW ENGLAND GRANITE

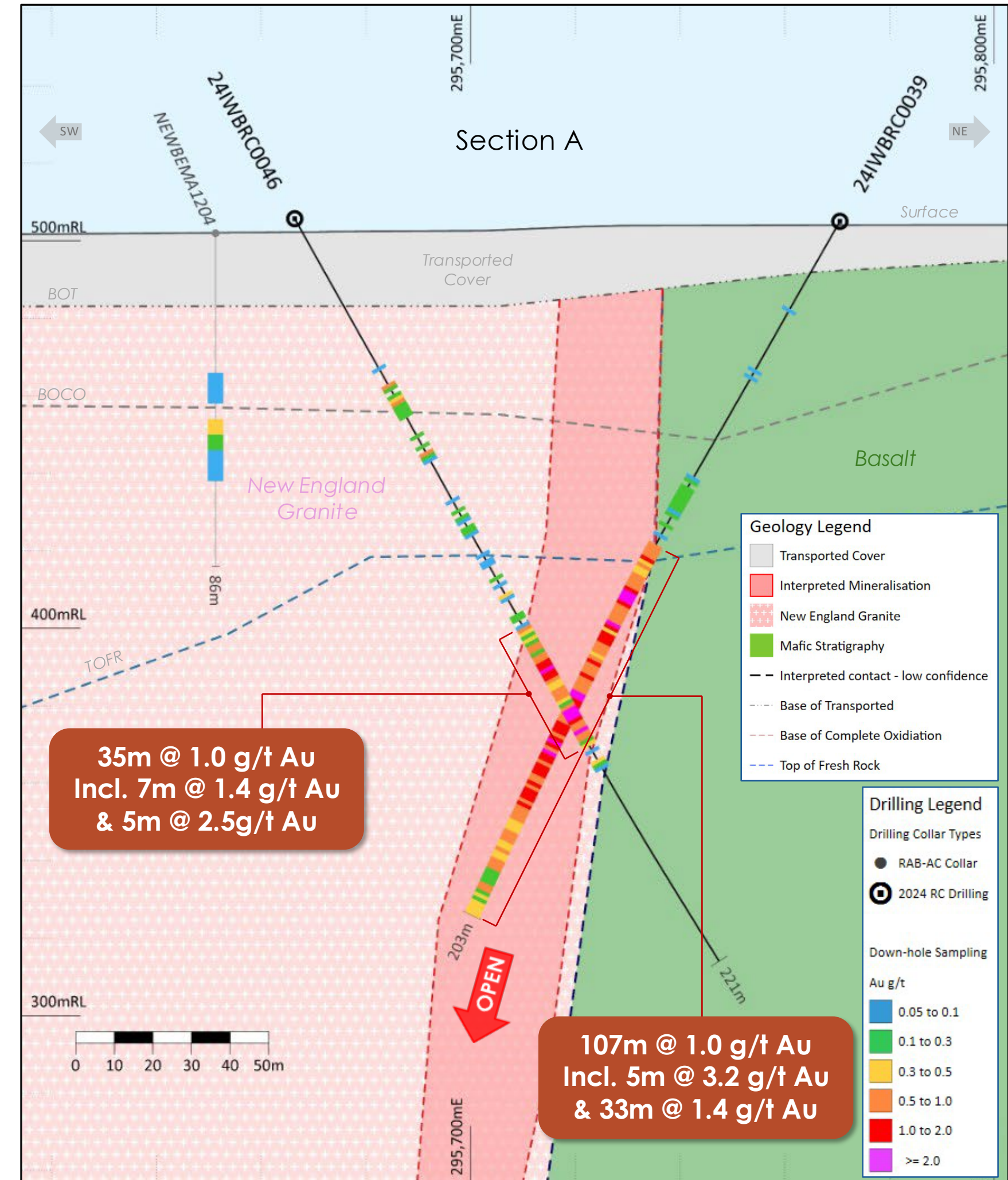
Hosts the Siona gold discovery

Large-scale granitic host is largely untested

- 4.4 x 2km granitic intrusion under 6-30m of cover
- Extensive regolith anomaly associated with the intrusive margin
- Evidence of strong depletion within the regolith profile

Siona was a geology-driven discovery

- Sub-vertical mineralisation with 12-40m true width
- Mineralisation continuity confirmed over >450m of strike
- Proximal to the northwest offset of New England Granite
- Evidence of multiple mineralisation events
- Evidence of potential high-grade domains



Siona Gold Discovery

Unlocking Siona's Potential

Siona - Six months since Discovery

- Maiden diamond drilling program complete – all holes logged, assaying underway

Leverage geophysics

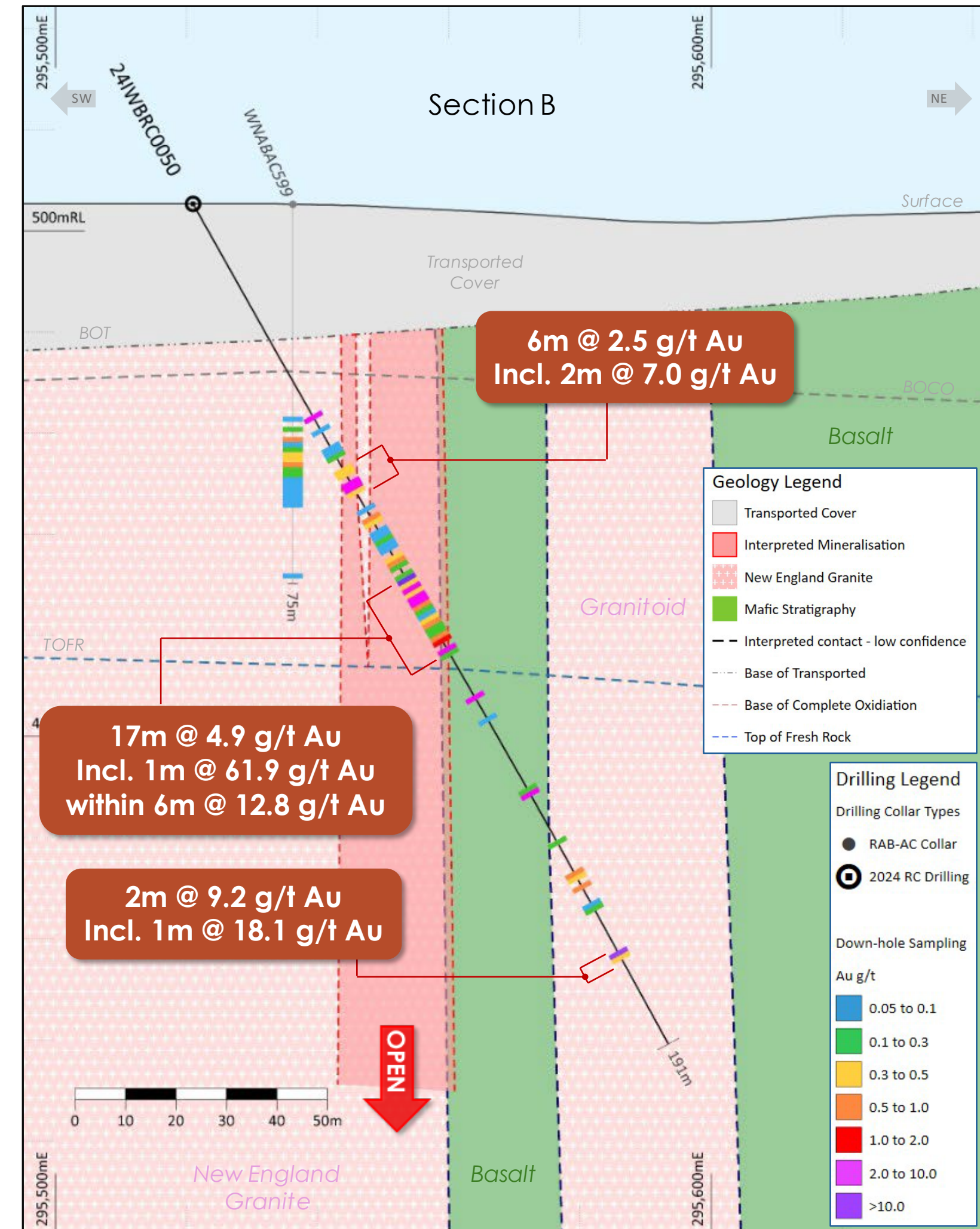
- Infill ground gravity survey complete and processed images received
- Structural targets revised

Access

- Heritage surveys are scheduled for late May

How big is the mineralised system?

What is the extent of high-grade gold?



TARGETING SCALE

Significant Discovery Potential

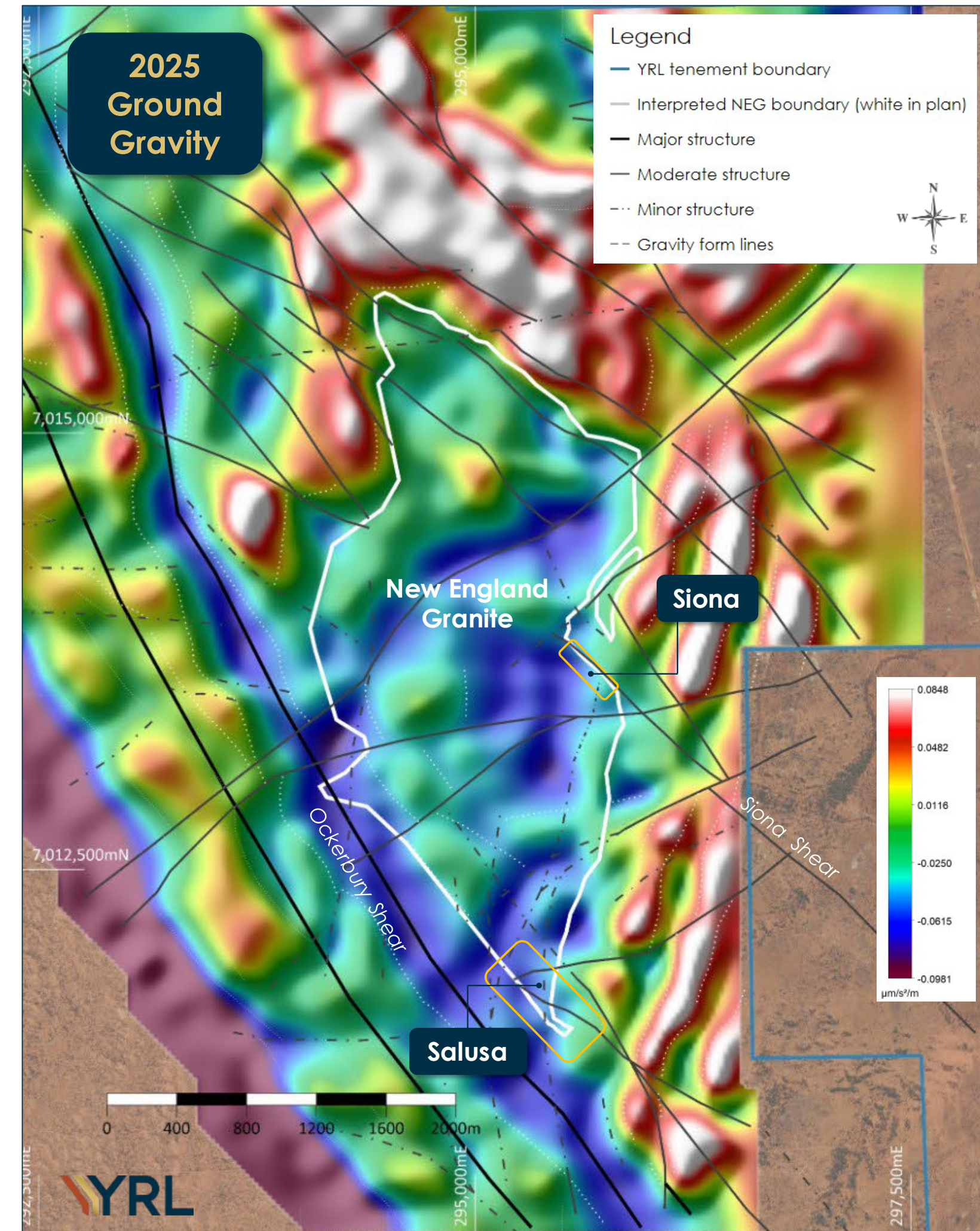
Large-scale host interacting with multiple structures

- Processed ground gravity enhances structural interpretations
- Siona Shear zone is one of several significant structures interacting with the New England Granite

RC drilling focused on advancing new discoveries

- ~ 5.5km of eastern intrusive margin now tested
- The western margin will be accessible following heritage surveys in late May
- Salusa Prospect was defined after recent RC drilling

Are there more Siona's to be found?



CALADAN TARGET AREA

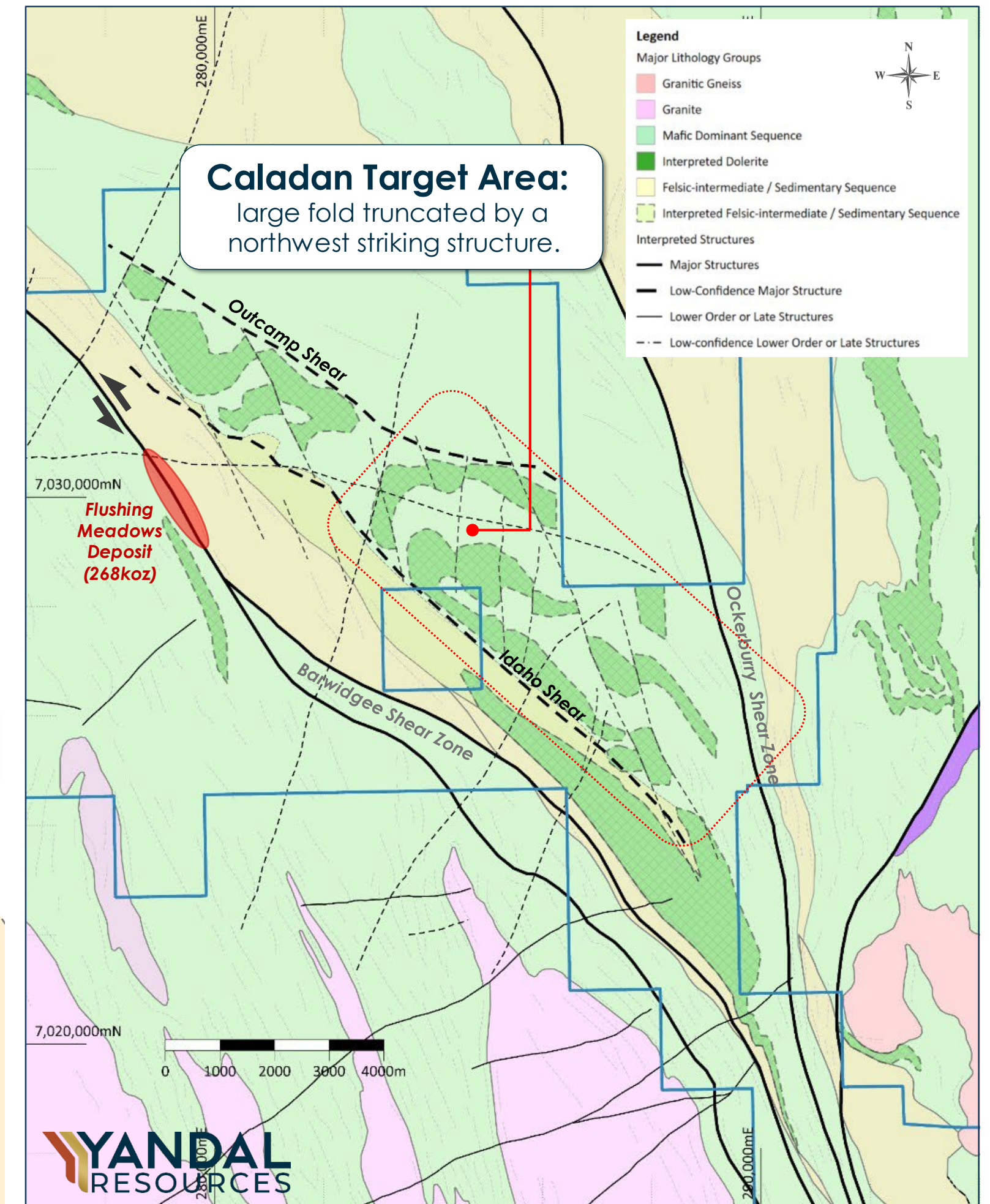
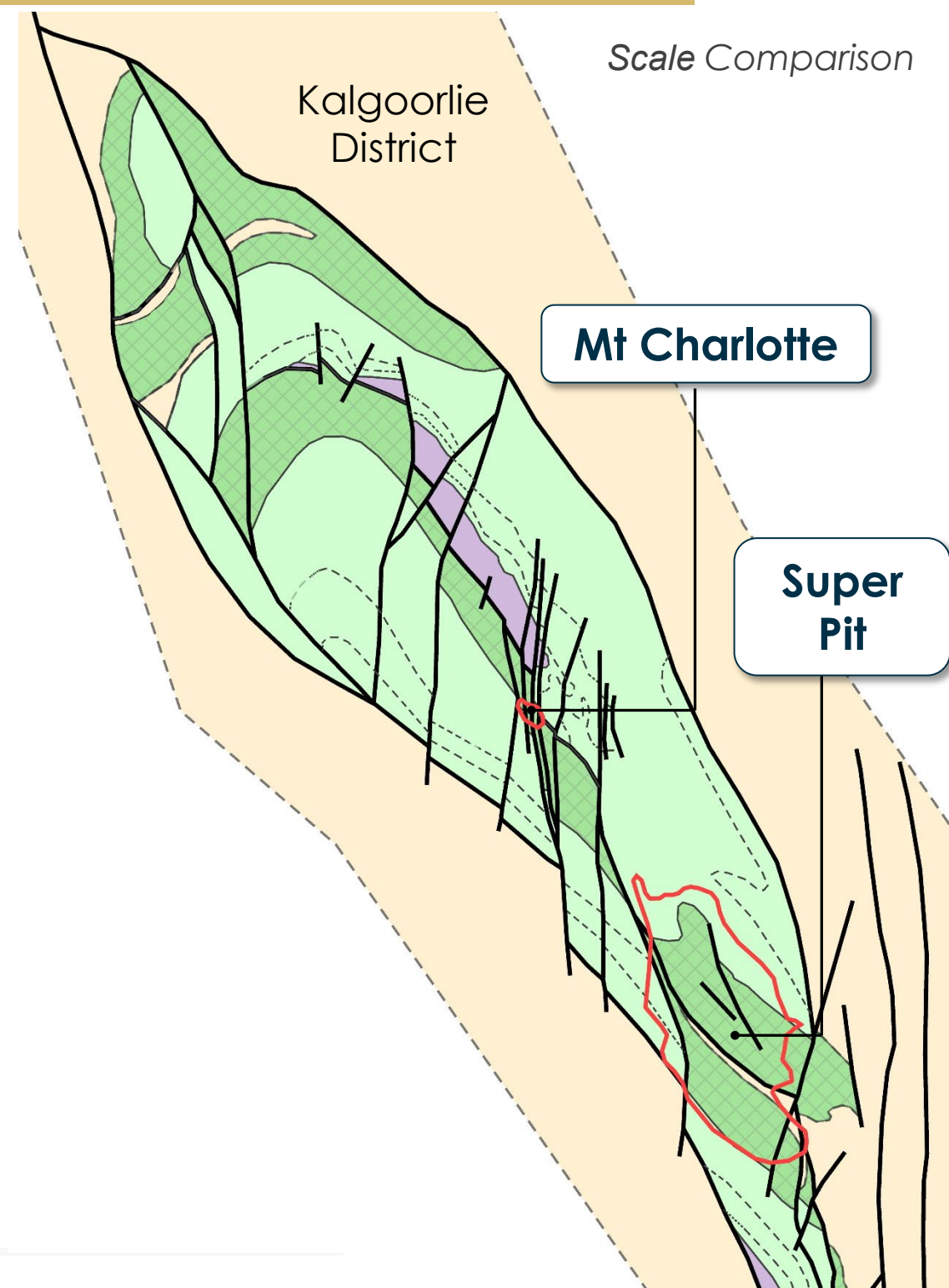
Unlocking New Discovery Opportunities

Previously unrecognised large-scale structures

- Large-scale fold structure, 3km wide and >8km long
- Truncated by the Idaho Shear
- Recent AC drilling confirms gravity high as fractionated dolerite
- Broad geological setting is similar to Kalgoorlie district

Large greenfield search space

- Covered by 2-20m of transported cover



DISCOVERY POTENTIAL

EARLY RESULTS DEMONSTRATES SCALE

Large Structures & Big Trends

Limited previous drilling

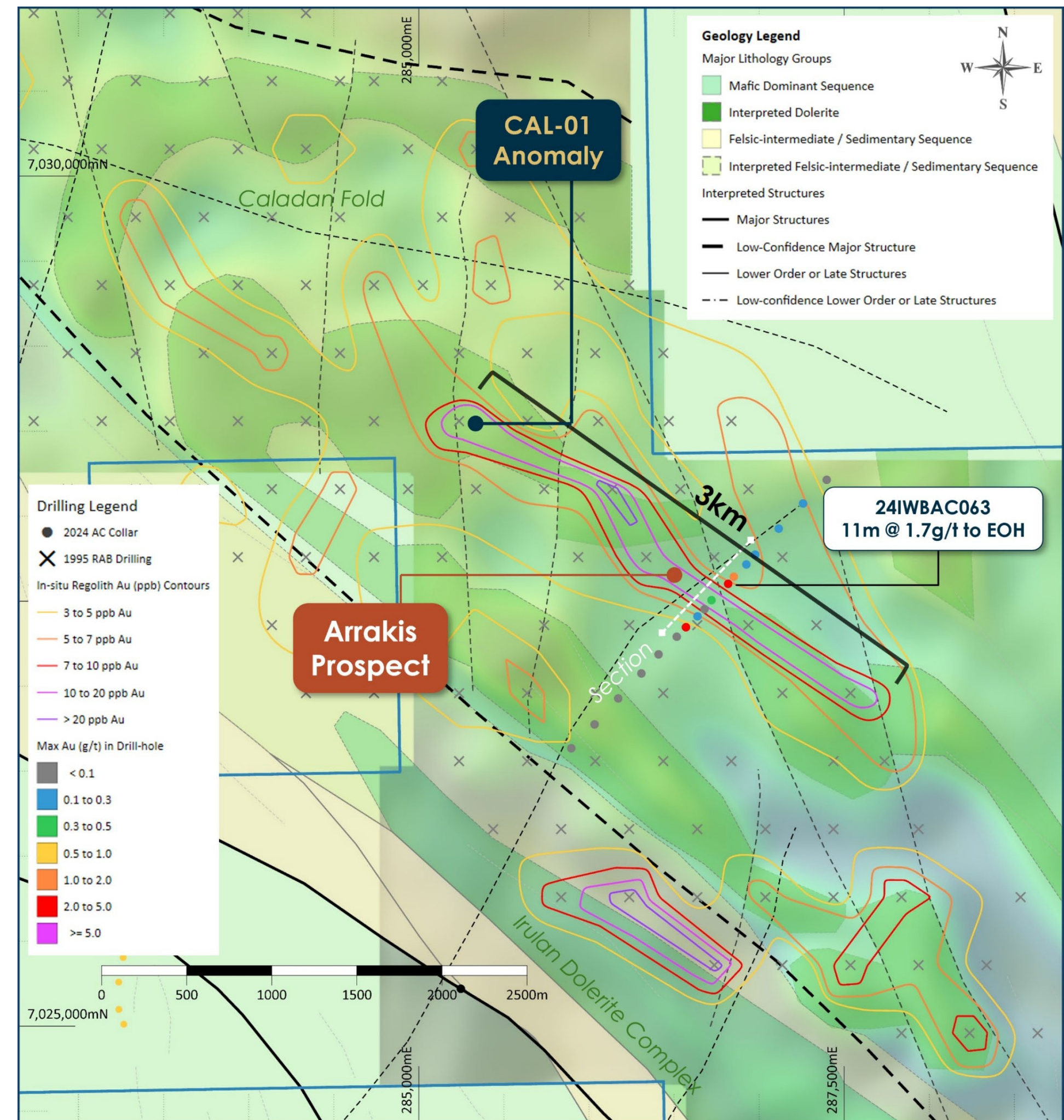
- Only drilling completed in 1995, 400m by 400m
- Shallow, average depth of 22m
- Coherent, **3km long**, low-level regolith anomaly

Recent AC & RC confirms primary gold mineralisation 11m @ 1.7g/t Au from 97m to EOH in 24IWBAC063

- In weakly weathered material suggest **primary mineralisation**
- New **Arrakis** Prospect defined

Does CAL-01 represent a 3km long bedrock position?

Small follow-up RC program complete & confirmed mineralisation continuity, geometry, multiple structures



IRULAN TARGET AREA

Dolerite - A Prolific Host for Gold

Excellent setting & poorly tested

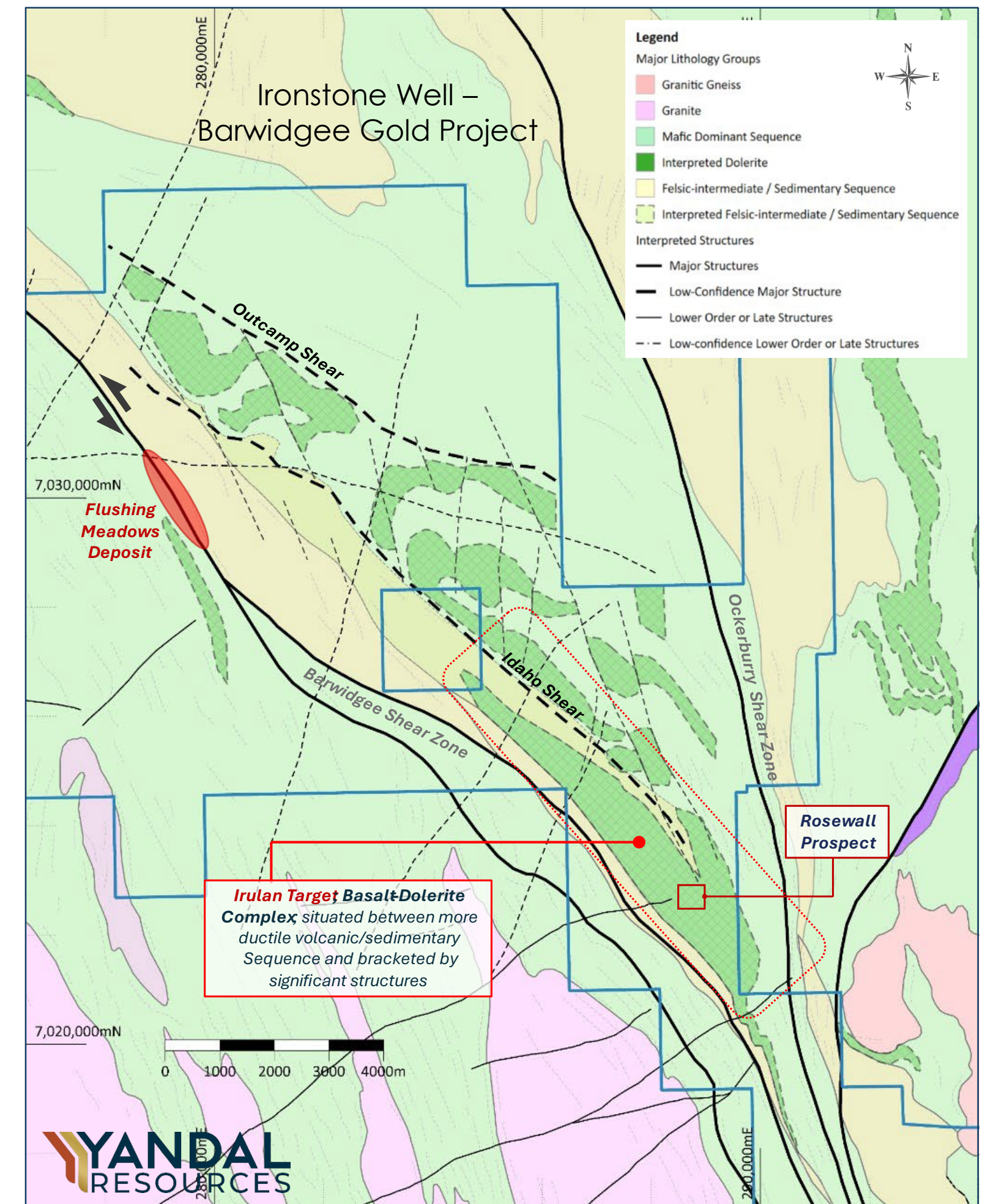
- Large dolerite complex
- Bracketed by the regional Barwidgee Shear Zone to the southwest
- Enveloped by ductile intermediate and sedimentary sequence
- Only 12% of the dolerite complex has been previously tested with drilling

Geological setting comparable to Jundee

Dolerites are a regionally significant host rock

- Evidence of fractionation (magnetite-quartz) to the northeast
- Rosewall Prospect evidence that the Irulan dolerite complex can host mineralisation

The first phase of AC drilling is Complete



Largest Mineral Resource

FLUSHING MEADOWS

268koz Gold Resource

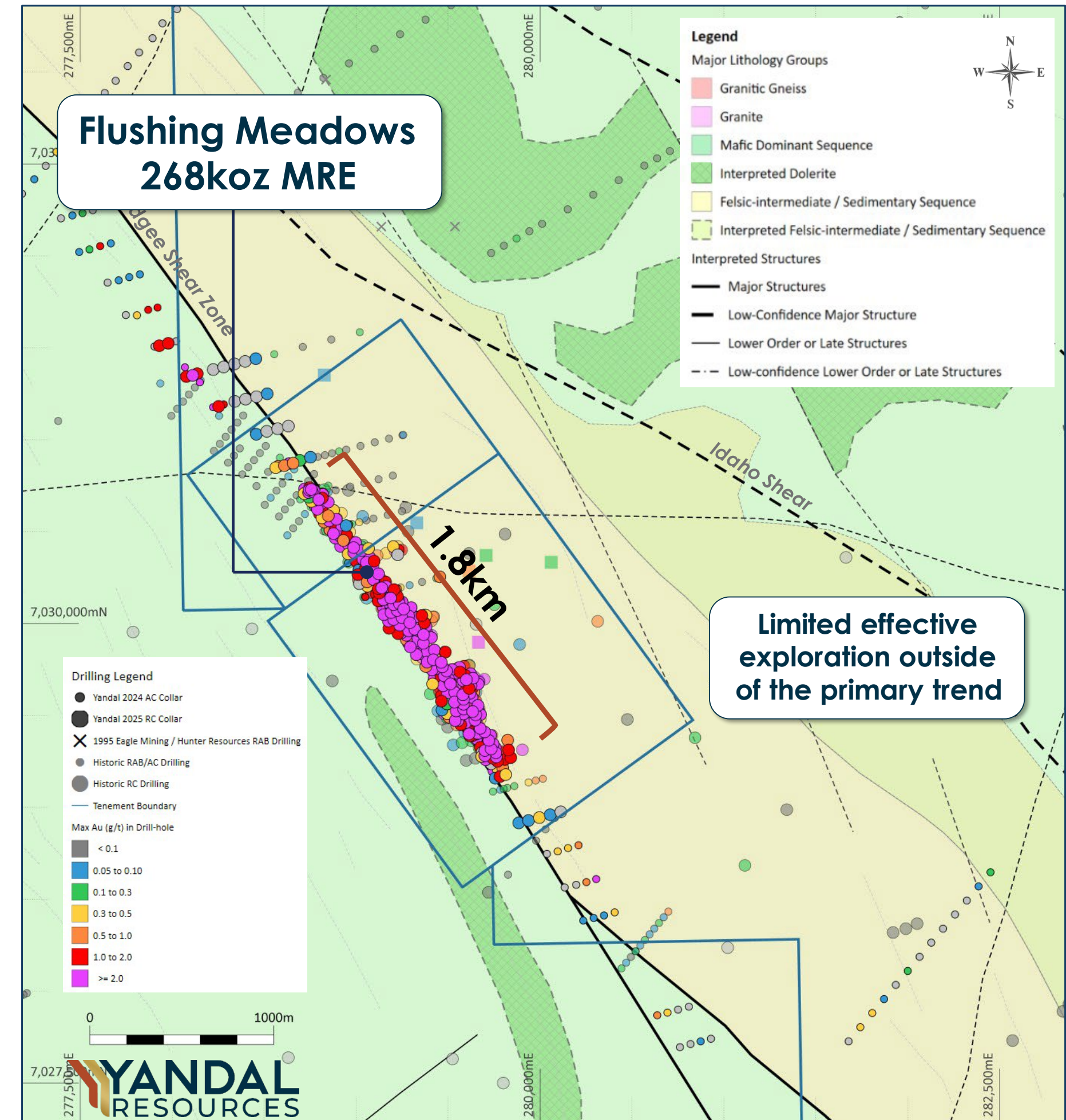
Mineralisation from the surface

- Unmined gold resource on a granted mining lease,
- Predominantly oxide Resource strikes over 1.9km,
- **50km** to Wiluna & **60km** to Jundee,
- Limited exploration drilling to the **east and south** of the deposit,
- Limited drilling at depth, and geological controls are poorly defined.

77% oxide and transitional mineralisation

2024 Gravity and Soils Present Adjacent Discovery Opportunities

- South Flushing Anomaly (See ASX 12 August 2024)
- Giedi Prime gravity target (see ASX 11 June 2024)



UNLOCKING GOLD DISCOVERIES

- ✓ Emerging Siona gold discovery within the New England Granite – *Just the start*
- ✓ Demonstrated the potential for further near-term discoveries – *Caladan / New England Granite / Arrakis*
- ✓ Strategically located projects – *Numerous processing options within 100km*
- ✓ A technically driven, systematic approach to exploration – *Recent results demonstrate that YRL strategies are effective and maturing*
- ✓ Well-funded to progress exploration into 2025 – *with circa \$7.1M in cash*



NEXT STEPS

Well Funded – Cash of ~\$7.1M*

Activity	April		May		June		July		August		Sept.	
Siona Diamond Drilling												
Caladan AC Program												
RC Follow-up												
NEG Heritage Survey												
NEG AC Program												
Caladan Heritage Survey #2												

Activity	Results
----------	---------

New England Granite

- Siona diamond results are due soon
- Heritage survey to be completed in Late May
- Air-core drilling scheduled for August

Caladan

- 12,500m program to commence in late May
- Results expected from July through to October
- Follow-up heritage surveys targeted in August

Corporate

- Strategic review of Mt McClure and Gordon's Gold Projects complete
- KPMG Corporate Finance to advise on and manage the potential divestment of the non-core Mt McClure and Gordons Gold Projects

*As at 31st March 2025





For further info

Contact Chris Oorschot

+61 (0)8 9389 9021

yandal@yandalresources.com.au

Lvl 3, Suite 1, 1138 Hay St West Perth, WA, 6005

ASX:YRL

yandalresources.com.au

UNLOCKING GOLD DISCOVERIES IN THE YANDAL BELT



Relevant Previous ASX Announcements

Further details relating to the information provided in this Presentation can be found in the following Yandal Resources Limited ASX announcements:

- *Arrakis RC Drilling Results, 30 April 2025*
- *New Prospect Defined at New England Granite, 15 April 2025*
- *Ironstone Well-Barwidgee Exploration Update, 25 February 2025*
- *Caladan Air-core Drilling Demonstrates Discovery Potential, 15 January 2025*
- *Siona Results & RC Drilling Commences for 2025, 13 January 2025*
- *High-Grade Gold at Siona, 11 December 2024*
- *Further RC Drilling Results From Siona, 25 November 2024*
- *RC drilling returns 78m @1.2g/t from New England Granite, 21 October 2024*
- *New England Granite Diamond Drilling Results, 24 September 2024*
- *IWB Soil Results & NEG Diamond Drilling Complete, 12 August 2024*
- *Gold Coast Investment Showcase Presentation, 20 June 2024*
- *Drilling at Oblique Confirms Large Scale Potential, 25 October 2023*
- *Heritage Clearance Received for Drill Testing of Key Prospects at Ironstone Well-Barwidgee, 24 July 2023*
- *Air-core Drilling Commences Across Caladan and Irulan, 10 October 2024*
- *Oblique Diamond Drilling Results, 3 September 2024*
- *IWB Soil Results and NEG Diamond Drilling Complete, 12 August 2024*
- *Large-scale Gold Anomalies Across Emerging Targets, 15 July 2024*
- *Gold Coast Investment Showcase Presentation, 20 June 2024*
- *Exploration Update – IWB Ground Gravity Survey, 11 June 2024*

MINERAL RESOURCE SUMMARY

Deposit	Indicated			Inferred			Total		
	Tonnes (‘000s)	Grade (g/t)	Au (oz)	Tonnes (‘000)	Grade (g/t)	Au (oz)	Tonnes (000’s)	Grade (g/t)	Au (Oz)
Ironstone Well									
Flushing Meadows ¹	2,141	1.3	91,000	5,245	1.1	177,000	7,386	1.1	268,000
Mt McClure									
Challenger ²				718	1.9	44,000	718	1.9	44,000
Success ³				1,255	1.9	75,000	1,255	1.9	75,000
Parmelia ⁴				252	2.1	17,000	252	2.1	17,000
HMS Sulphur ⁵				1010	1.2	39,000	1010	1.2	39,000
Gilmore ⁶				134	1.7	7,200	134	1.7	7,200
Sub-total - MMC				3,369	1.7	182,200	3,369	1.7	182,200
Gordons									
Gordons Dam ⁷				365	1.7	20,000	365	1.7	20,000
Grand-total⁸	2,141	1.3	91,000	8,979	1.3	379,200	11,120	1.4	470,200

Due to the effects of rounding, totals may not represent the sum of the individual components. 1- Reported above 0.5g/t Au lower cut-off grade; refer to Yandal Resources Ltd ASX announcement dated 4 November 2020 for full details. 2- Reported above 1.0g/t Au lower cut-off grade; refer to Yandal Resources Ltd ASX announcement dated 22 August 2022 for full details. 3- Reported above 1.0g/t Au lower cut-off grade; refer to Yandal Resources Ltd ASX announcement dated 6 September 2022 for full details. 4- Reported above 1.0g/t Au lower cut-off grade; refer to Yandal Resources Ltd ASX announcement dated 20 September 2022 for full details. 5- Reported above 0.5g/t Au lower cut-off grade; refer to Yandal Resources Ltd ASX announcement dated 3 October 2022 for full details. 6- Reported above 1.0g/t Au lower cut-off grade; refer to Yandal Resources Ltd ASX announcement dated 3 October 2022 for full details. 7- Reported above 1.0g/t Au lower cut-off grade; refer to Yandal Resources Ltd ASX announcement dated 3 October 2022 for full details. 8- All Resources are reported as global estimates, not constrained by optimised pit shells.