



Allup Silica (ASX:APS)
Projects. Purity. Ports.



ALLUP SILICA – IMPORTANT INFORMATION

DISCLAIMER

The following disclaimer applies to this investor presentation (Presentation) and you are therefore advised to read this disclaimer carefully before reading or making any other use of this Presentation or any information contained in this Presentation. By accepting this Presentation, you represent and warrant that you are entitled to receive this Presentation in accordance with the restrictions, and agree to be bound by the limitations, contained within it.

ISSUER AND PURPOSE

This presentation has been prepared by Allup Silica Limited ACN 163 173 224 (Allup, Allup Silica or the Company) for the purpose of providing information about the Company.

SUMMARY INFORMATION

This Presentation contains summary information about Allup Silica and its activities which is current only as at the date of this Presentation. The information in this Presentation is of a general nature and does not purport to be complete nor does it contain all the information which a prospective investor may require in evaluating a possible investment in Allup Silica or that would be required in a prospectus or other disclosure document prepared in accordance with the requirements of the Corporations Act 2001 (Cth) (Corporations Act). Certain market and industry data used in connection with this Presentation may have been obtained from research, surveys or studies conducted by third parties, including industry or general publications. Neither Allup Silica nor its representatives have independently verified any such market or industry data provided by third parties or industry or general publications and no representation or warranty, express or implied, is made as to its fairness, accuracy, correctness, completeness or adequacy.

NOT AN OFFER

This Presentation is not a Prospectus or other disclosure document under the Corporations Act and will not be lodged with the Australian Securities and Investments Commission. This Presentation is for information purposes only and is not an invitation or offer of securities for subscription, purchase or sale in any jurisdiction. The distribution of this Presentation (including an electronic copy) outside Australia may be restricted by law. If you come into possession of this Presentation, you should observe such restrictions and should seek your own advice on such restrictions. Any noncompliance with these restrictions may contravene applicable securities laws.

NOT INVESTMENT ADVICE

The information contained in this Presentation is not investment or financial product advice or any recommendation to acquire Shares. This Presentation does not and will not form any part of any contract for the acquisition of Shares. Each recipient of this Presentation should make its own enquiries and investigations regarding all information in this Presentation. This Presentation been prepared without taking into account your investment objectives, financial situation or particular needs. Before making an investment decision, you should consider whether it is a suitable investment for you in light of your own investment objectives, financial situation and particular needs and having regard to the merits or risks involved.

FUTURE PERFORMANCE

This Presentation contains forward looking statements and comments about future events, including Allup Silica's expectations about the performance of its business. Forward looking statements can generally be identified by the use of forward looking words such as, "expect", "anticipate", "likely", "intend", "should", "could", "may", "predict", "plan", "propose", "will", "believe", "forecast", "estimate", "target" and other similar expressions. Indications of, and guidance or outlook on, future earnings or financial position or performance are also forward looking statements. You are cautioned not to place undue reliance on any forward looking statement. While due care and attention has been used in the preparation of forward looking statements, forward looking statements, opinions and estimates provided in this Presentation are based on assumptions and contingencies which are subject to change without notice, as are statements about market and industry trends which are based on interpretations of current market conditions. Forward looking statements including projections, expectations, guidance on future earnings and estimates concerning the timing and success of strategies, plans or intentions are provided as a general guide only and should not be relied upon as an indication or guarantee of future performance and may involve known and unknown risks, uncertainties and other factors, many of which are outside the control of Allup Silica. A number of important factors could cause Allup Silica's actual results to differ materially from the plans, objectives, expectations, estimates and intentions expressed in such forward looking statements. Actual results, performance or achievements may vary materially from any forward looking statements and the assumptions on which statements are based. Allup Silica disclaims any intent or obligation to update publicly any forward looking statements, whether as a result of new information, future events or results or otherwise. The forward looking statements are based on information available to Allup Silica as at the date of this Presentation. Except as required by law or regulation, Allup Silica undertakes no obligation to provide any additional or updated information whether as a result of new information, future events or results or otherwise.

COMPETENT PERSON STATEMENT

The information in this announcement that relates to Exploration Results is based on information compiled by Shane Hibbird, who is a Member of The Australian Institute of Geoscience and who has more than five years' experience in the field of activity being reported on. Shane Hibbird is the Geologist of the Company.

Mr. Hibbird has sufficient experience which is relevant to the style of mineralisation and type of deposit under consideration, and to the activity which he is undertaking to qualify as a Competent Person as defined in the 2012 Edition of the 'Australasian Code for Reporting of Exploration Results, Mineral Resources and Ore Reserves'. Mr Hibbird consents to the inclusion in the report of the matters based on his information in the form and context in which it appears.

The Company confirms that there is no new information or data that materially affects the mineral resource estimate announced on 30 June 2022, and that all assumptions underpinning the estimate continue to apply and have not materially changed.

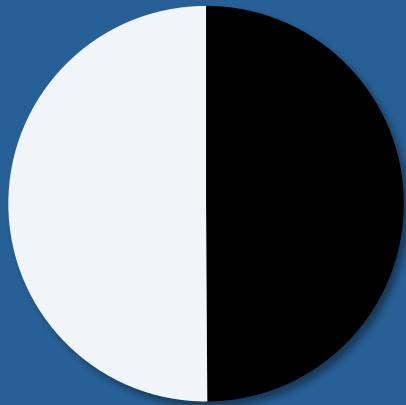
This release has been approved by the Board of Directors



CORPORATE SNAPSHOT

Distribution of Shares

(As at 20 Feb 2023)



■ Directors & Management

■ Others

Share Price Performance



Share Price

A\$0.030

52-week range \$0.030 - \$0.080

Market Capitalisation

A\$2.53M

Shares on Issue

84,511,665

Cash

A\$2.02M

As at 31 December 2023

Options

5,000,000



OUR BOARD



Andrew Haythorpe

Managing Director | ah@allupsilica.com

Andrew is a venture capitalist with nearly 30 years' experience establishing start-up enterprises in a variety of sectors. He has held a number of Company Chair and Board positions, as well as that of CEO of several successful listed minerals and resources organisations and is currently Director of an ASX listed company.



Campbell Smyth

Non-Executive Chairman | cs@allupsilica.com

Campbell's professional career has been in the provision of advice to fund management, capital markets and the corporate finance sector. This experience has been with most major markets, primarily the ASX, and listed and unlisted companies in North America and Europe.



Gavin Ball

Non-Executive Director | gb@allupsilica.com

Gavin is a business manager who adds strength to each of the companies with whom he works. He has over 30-years of hands-on skill and intellectual expertise in the start-up, commercial development, growth and ongoing management of businesses. Gavin has proven management, financial and accounting skill sets, with a strong sales and marketing focus.



ALLUP – A UNIQUE APPROACH

Multiple Project Locations for High-Purity Silica Sand



100%

All Projects 100% Owned
Scale and Risk Mitigation

Focus on **Project Logistics** with **Road, Rail and Port** all with potential export **Capacity**

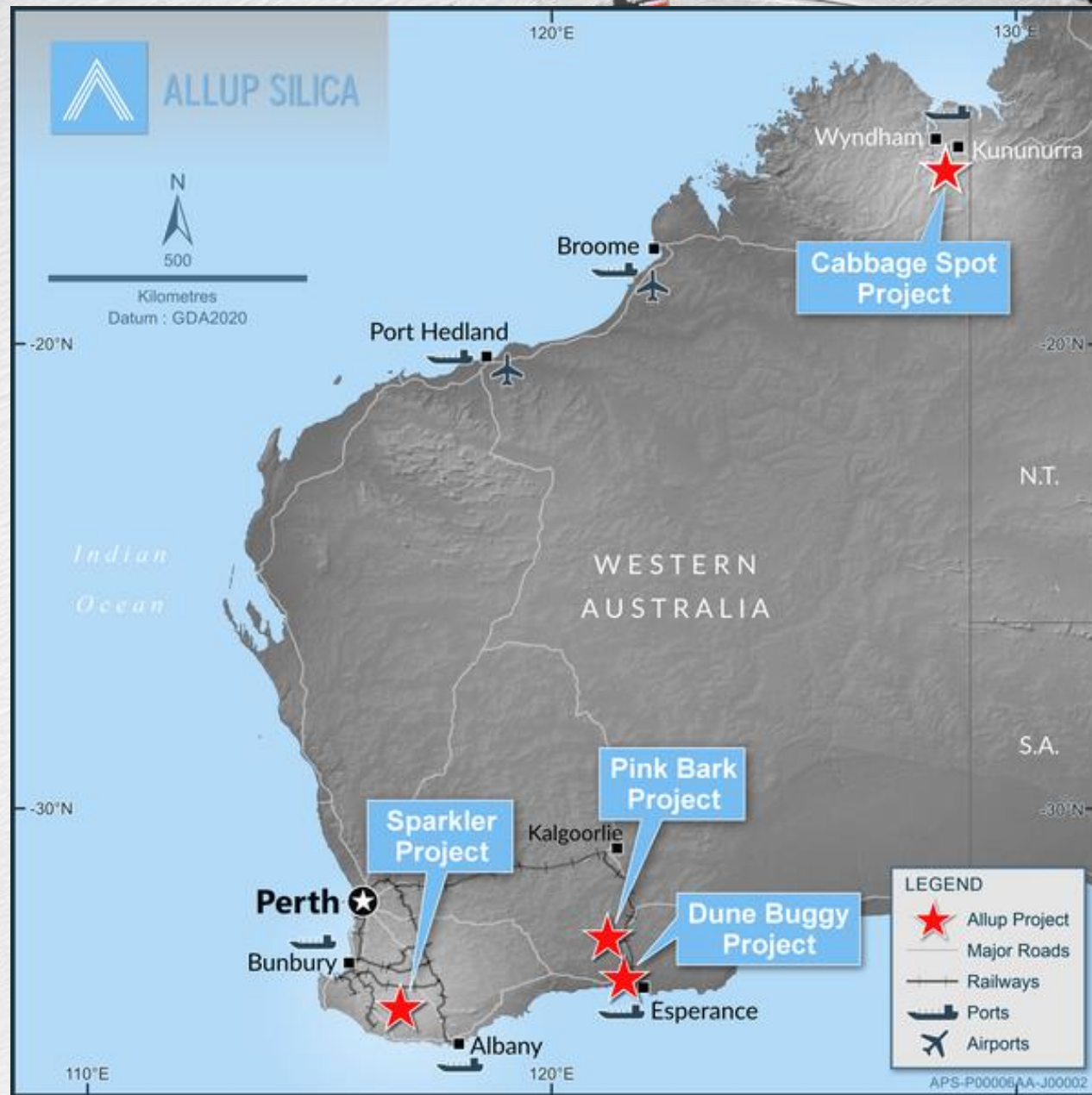


R+D

Purity optimisation using low-cost techniques

See Allup Silica Limited ASX Announcement 9th September 2022

* Sparkler Project was previously known as the Unicup Project





ASSET OVERVIEW – SPARKLER



Bunbury (~200km)
and Albany (~160km)
Ports by Road

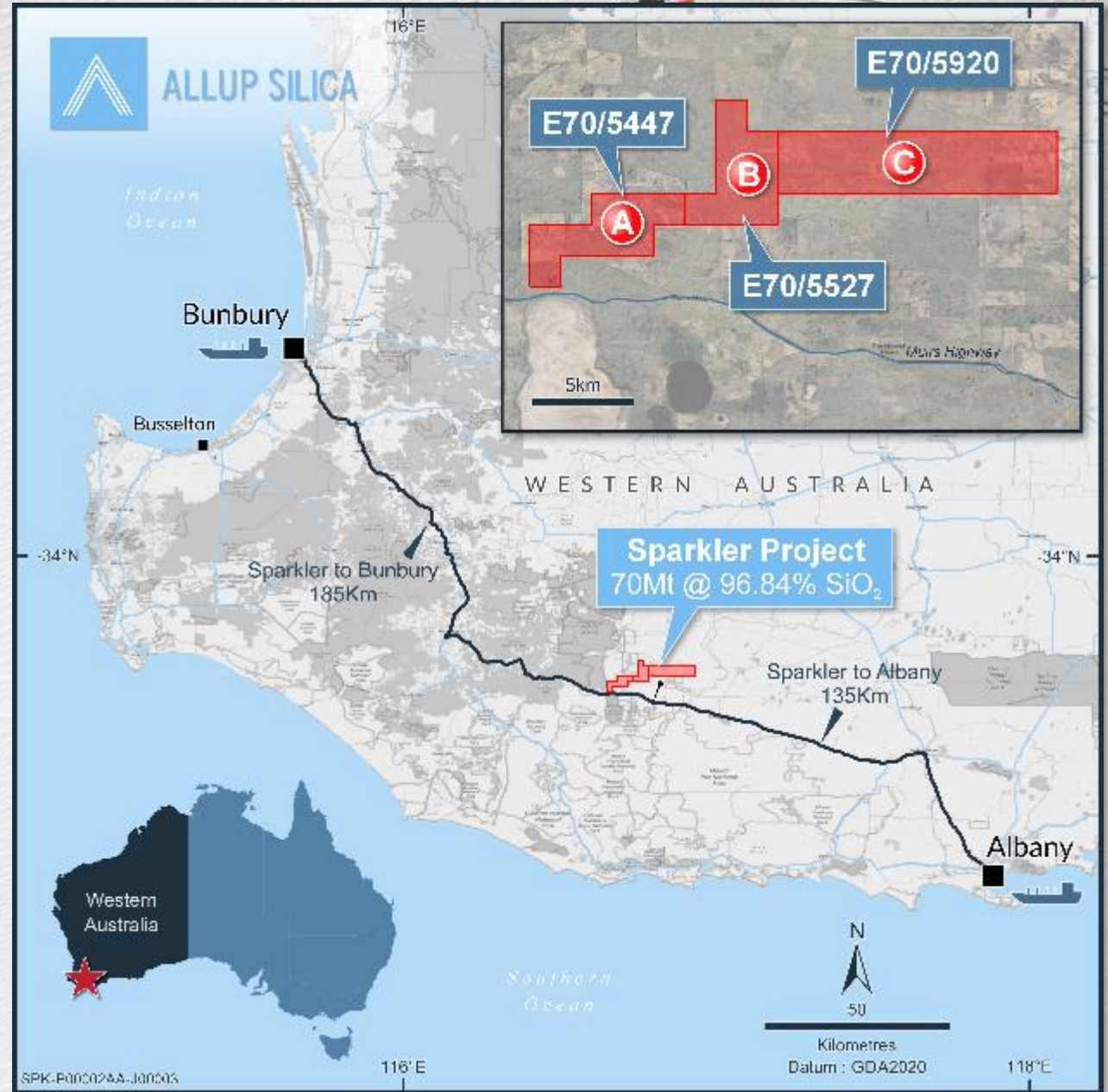


Potential for Near
Port Land for
**Processing
Facilities**

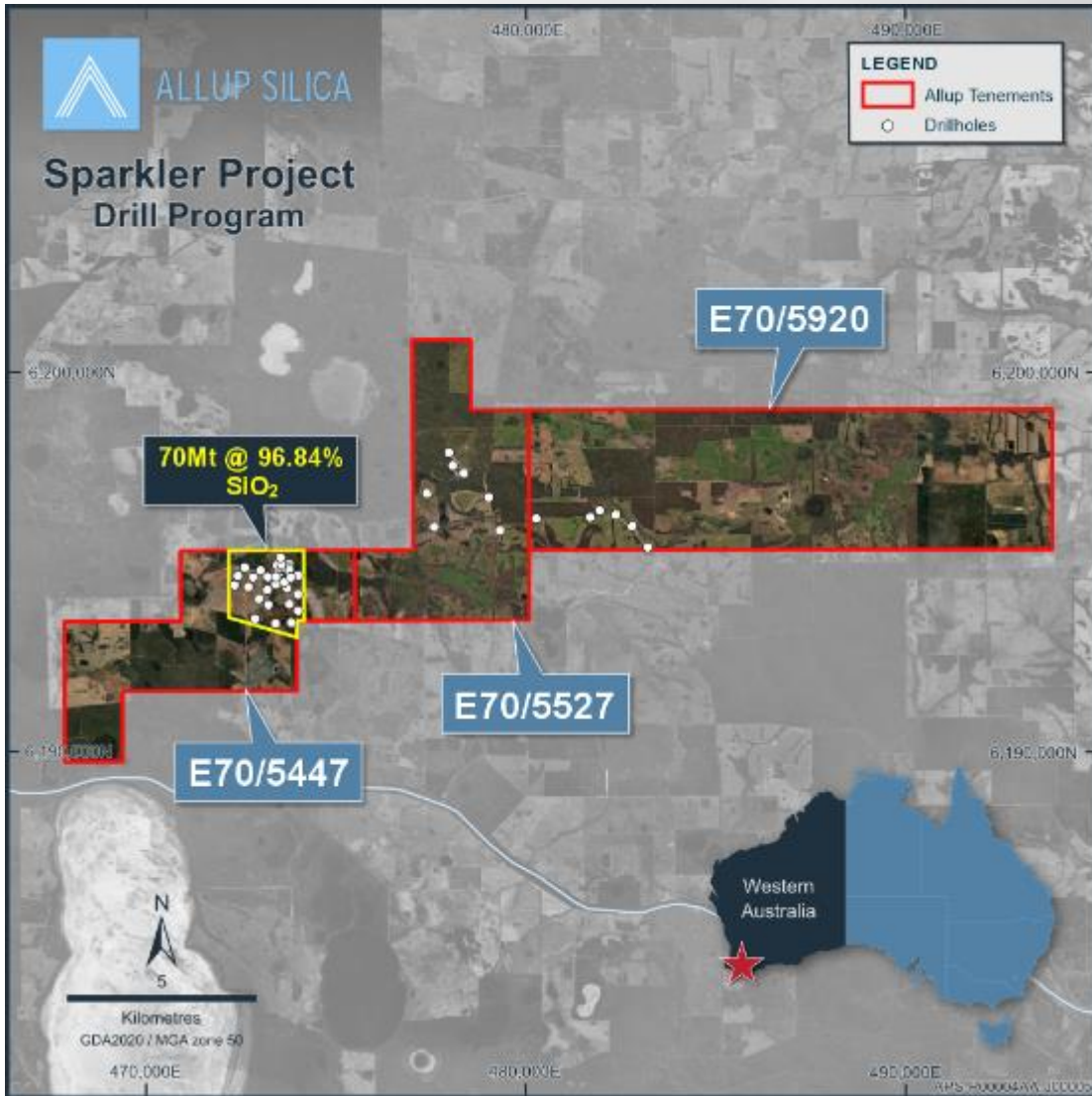
**In-situ grades up
to 99.3% SiO₂**

**Bulk Sample
beneficiated to
99.9% SiO₂ and
90 ppm Fe₂O₃**

**70 Mt JORC
Mineral Resource
Estimate on
cleared farmland**



*See Allup Silica ASX Announcement dated 30 June 2022



JORC 70MT INFERRED MINERALS RESOURCE ESTIMATE ON CLEARED FARMLAND

Size Fraction	Yield	Tonnes	SiO ₂ %	Al ₂ O ₃ %	Fe ₂ O ₃ %	TiO ₂ %	LOI %
In-situ resource		70,000,000	96.84	1.17	0.34	0.43	0.66
Coarse sand +0.6mm	36.5%	25,000,000	99.67	0.06	0.03	0.04	0.09
Sand 0.106mm - 0.6mm	52.9%	37,000,000	99.66	0.06	0.02	0.03	0.08
Fine sand 0.045mm - 0.106mm	5.2%	4,000,000	97.70	0.17	0.41	1.04	0.25

BEST GRADES

Drillhole Sample	Size Fraction	SiO ₂ %	Fe ₂ O ₃ ppm
UAC020+021 0-3m	0.106mm – 0.6mm	99.728	110
UAC021 12-20m	0.106mm – 0.6mm	99.684	90
UAC033 9-16m	0.106mm – 0.6mm	99.815	65
UAC040 12-20m	0.106mm – 0.6mm	99.693	70

*See Allup Silica ASX Announcement dated 30 June 2022.



SPARKLER SILICA SAND PROJECT – SAND ON CLEARED FARMLAND





BULK TESTWORK METALLURGY* – CDE GLOBAL LABORATORY

RAW – NO SCREEN



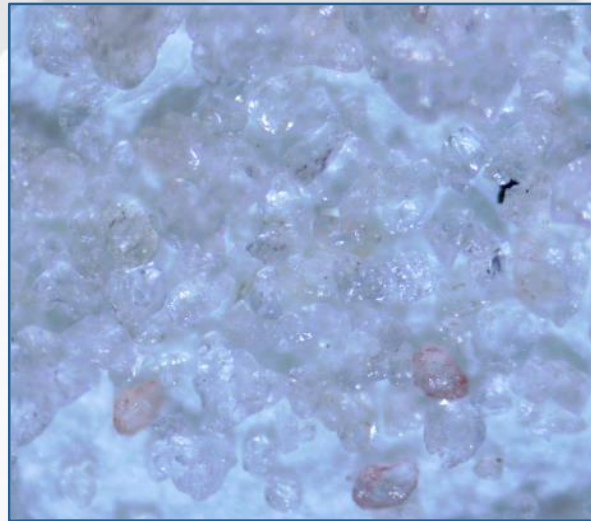
SCREENED AND SIZED



PROCESSED - MAG



PROCESSED – MAG (micro)



CHEMICAL SPECIFICATIONS*

AVERAGE GRADES**	SiO ₂ (%)	Fe ₂ O ₃ (%)	Al ₂ O ₃ (%)
RAW	99.3	0.05	0.28
PROCESSED	99.84	0.01	0.02

*See ASX Announcement dated 27 March 2024

** Calculated Values



CABBAGE SPOT (ARGYLE) 100% APS



Main Roads
rated for **Quad-trailer**
Transport



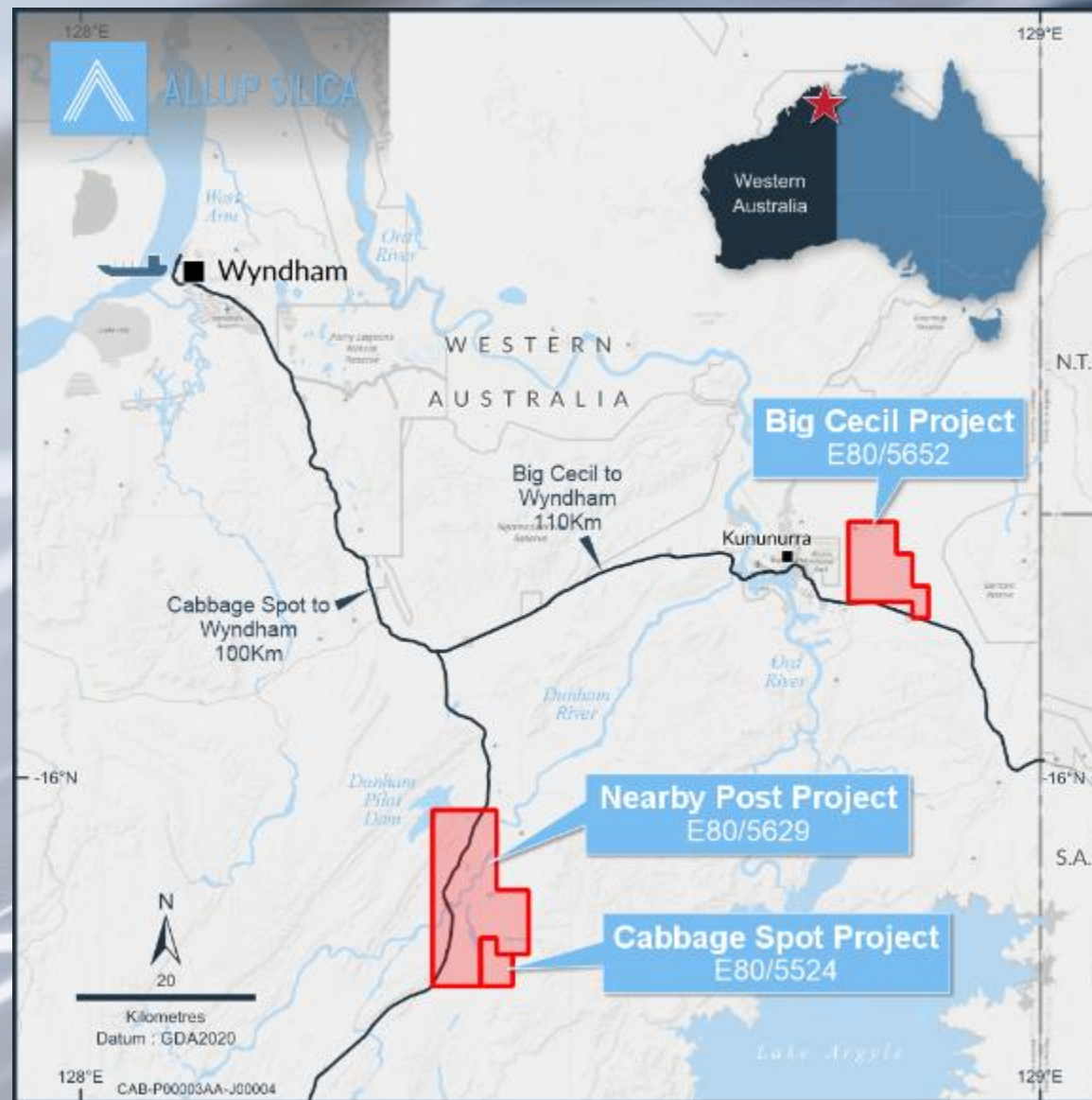
Wyndham Port
90km



Wyndham Port has
potential Capacity and Land
for **Processing Facilities**



Closer to Asia-Pacific
Customers





CABBAGE SPOT - HIGH PURITY SILICA WITH LOW IRON FROM GRAB SAMPLES



SAMPLES SHOW ENCOURAGING PURITY

- High SiO₂ in-situ grades
- Beneficiation underway – potential for glass market grade silica sand

CABBAGE SPOT

RAW GRADES*

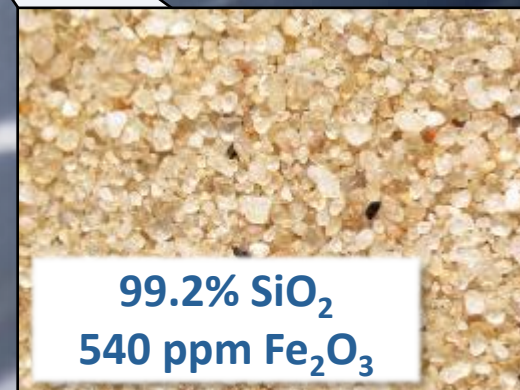
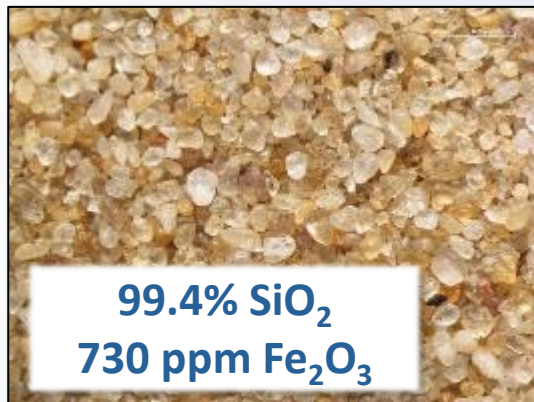
EL 80/5524

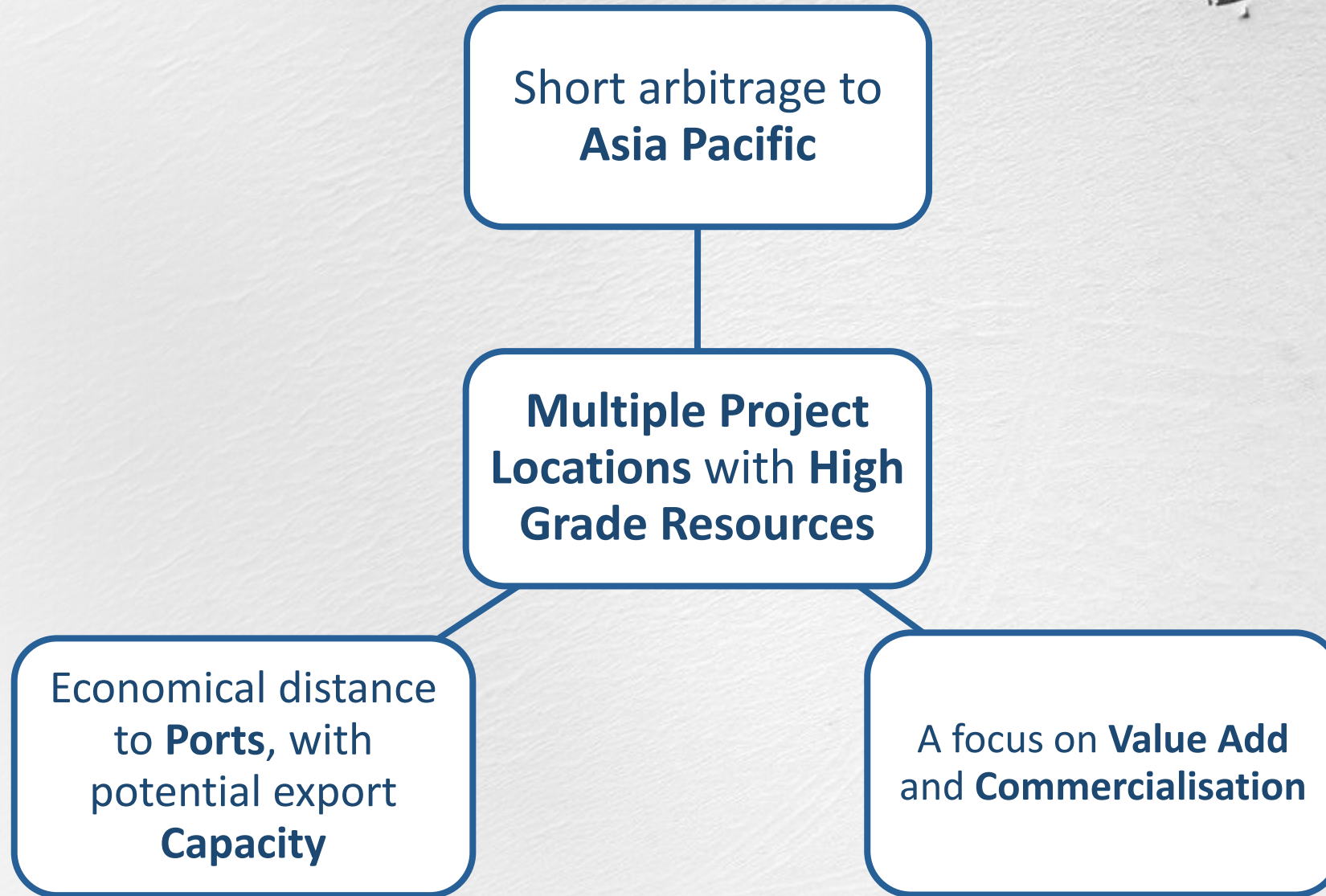
Grade	Worst	Best
Silica (SiO ₂) [%]	98.0	99.4
Inclusions		
Iron Oxide (Fe ₂ O ₃) [ppm]	4089	540
Titanium Dioxide (TiO ₂) [ppm]	640	210
Alumina (Al ₂ O ₃) [ppm]	12309	1600

*See ASX Announcement dated 27 March 2024



CABBAGE SPOT – ON GROUND







ALLUP SILICA LIMITED (ASX:APS) – CONTACT US

Andrew Haythorpe

Managing Director

t: 0413 261 972

e: ah@allupsilica.com

Paul Clausen

Commercial Manager

t: 0413 261 972

e: ah@allupsilica.com

Registered Office

C/- Argus Corporate Partners Pty Ltd

Level 4, 225 St Georges Terrace
Perth WA 6000

t: 1300 SILICA
(within Australia)

t: +61 8 6185 1744

e: team@allupsilica.com

w: www.allupsilica.com

Media & Investor Relations:

Peter Taylor

t: 0412 036 231

e: peter@nwrcommunications.com.au

Kristin Rowe

t: 0404 889 896

e: kristin@nwrcommunications.com.au