



CRITICAL BATTERY METALS

Emerging Small Cap Summit December 2020

Dr Caedmon Marriott
Company Executive



DISCLAIMER

NATURE OF THIS DOCUMENT

This presentation has been prepared by Aldoro Resources Limited ACN 622990809 (Company). The information is based on publicly available information, internally developed data and other sources. By receiving this presentation, you acknowledge and represent to the Company that you have read, understood and accepted the terms of this disclaimer.

It is the responsibility of all recipients of this presentation to obtain all necessary approvals to receive this presentation and receipt of this presentation will be taken by the Company to constitute a representation and warranty that all relevant approvals have been obtained.

This presentation is a visual aid and is not intended to be read as a stand alone document. The material contains selected and abbreviated summary information about the Company and its subsidiaries and their activities current as at the date of this presentation. The material is of general background and does not purport to be complete. The Company is not responsible for providing updated information and assumes no responsibility to do so.

NOT AN OFFER

This presentation is for information purposes only and does not purport to be all inclusive or to contain all information about the Company or any of the assets, current or future, of the Company. This presentation does not comprise a prospectus, product disclosure statement or other offering document under Australian law (and will not be lodged with ASIC) or any other law.

This presentation also does not constitute or form part of any invitation, offer for sale or subscription or any solicitation for any offer to buy or subscribe for any securities in any jurisdiction nor shall they or any part of them form the basis of or be relied upon in connection therewith or act as any inducement to enter into any contract or commitment with respect to securities.

This presentation does not constitute an offer to sell, or a solicitation of an offer to buy, any securities in the United States. This presentation and its contents must not be distributed, transmitted or viewed by any person in the United States or any jurisdiction where the distribution, transmission or viewing of this document would be unlawful under the securities or other laws of that or any other jurisdiction.

NOT INVESTMENT ADVICE

To the maximum extent permitted by law, the information contained in this presentation is given without any liability whatsoever being accepted by the Company or any of its related bodies corporate or their respective directors, officers, partners, employees, advisors and agents. This presentation is not investment or financial product advice (nor tax, accounting or legal advice) and its contents are not intended to be used for the basis of making an investment decision. No representation or warranty, express or implied, is made as to the accuracy, completeness or thoroughness of the information, whether as to the past or future.

Recipients of this presentation should carefully consider whether the company is an appropriate investment for them in light of their personal circumstances, including their financial and taxation position. This presentation does not take into account the individual investment objectives, financial situation and particular needs of each recipient of this presentation. Therefore recipients of this presentation may wish to seek independent financial and taxation advice before making any decision in respect of this presentation. Neither the Company nor any of its related bodies corporate is licensed to provide financial product advice in respect of the Company's securities or any other financial products.

FORWARD LOOKING STATEMENTS

Statements and material contained in this presentation, particularly those regarding possible or assumed future performance, production levels or rates, commodity prices, resources or potential growth of the Company, industry growth or other trend projects are, or may be, forward looking statements. Such statements relate to future events and expectations and, as such, involve known and unknown risks and uncertainties and are based on the assumptions, estimates, analysis and opinions of management made in light of its experience and its perception of trends, current conditions and expected developments, as well as other factors that management of the Company believes to be relevant.

Although management believes that the assumptions made by the Company and the expectations represented by such information are reasonable, there can be no assurance that the forward-looking information will prove to be accurate. Forward-looking information involves known and unknown risks, uncertainties, and other factors which may cause the actual results, performance or achievements of the Company to be materially different from any anticipated future results, performance or achievements expressed or implied by such forward-looking information. Such factors include, among others, the actual market price of commodities, the actual results of current exploration, the actual results of future exploration, changes in project parameters as plans continue to be evaluated, as well as those factors disclosed in the Company's publicly filed documents. Readers should not place undue reliance on forward-looking information. The Company does not undertake to update any forward-looking information, except in accordance with applicable securities laws.

DISCLAIMER

No representation or warranty, express or implied, is made by the Company that the material contained in this presentation will be achieved or prove to be correct. Except for statutory liability which cannot be excluded, each of the Company, its directors, officers, employees, advisers and agents expressly disclaims any responsibility for the accuracy, fairness, sufficiency or completeness of the material contained in this presentation, or any opinions or beliefs contained in this presentation, and excludes all liability whatsoever (including in negligence) for any loss or damage which may be suffered by any person as a consequence of any information in this presentation or any error or omission therefrom. To the maximum extent permitted by the law, the Company disclaims any obligation to update or keep current the information contained in this presentation or to correct any inaccuracy or omission which may become apparent, or to furnish any person with any further information. Any opinions expressed in the presentation are subject to change without notice.

COMPETENT PERSON STATEMENT

Caedmon Marriott who is a member of the Australasian Institute of Mining and Metallurgy and the Australian Institute of Geoscientists, is Managing Director of the Company. Caedmon has sufficient experience that is relevant to the styles of mineralisation and type of deposits under consideration, and to the activity being undertaken, to qualify as a Competent Person as defined in the 2012 Edition of the 'Australasian Code for Reporting of Exploration Results, Mineral Resources and Ore Reserves'. Caedmon consents to the inclusion in this presentation of the matters based on his information in the form and context in which it appears.

MONETARY VALUES

Unless otherwise stated, all dollar values are in Australian Dollars (A\$). The information in this presentation remains subject to change without notice.



Results Driven, Battery Minerals (Ni-Cu-PGE) and Gold Focused Exploration Company



Aldoro Resources

- ◆ Experienced and successful board and management
- ◆ Multiple “company making” opportunities across 4 current priority projects:
 - ◆ **Narndee Project (Ni-Cu-PGE)** - “**Julimar-style**” potential, entire basal ultramafic portion of the **largest layered mafic-ultramafic complex in Australia** with historic evidence for a **working Ni-Cu-PGE sulphide mineral system**
 - ◆ **Penny South (Au)** - targeting extension of the Penny West Mine, gold mineralisation identified over 400m strike
 - ◆ **Unaly Hill South (Au)** - favourable structural juncture between the major Youanmi and Yuinmery Shears in the Youanmi Gold Mining District
 - ◆ **Ryans Finds (Au)** - over 50km strike of the under explored Watt Hills Greenstone Belt, bookended by numerous gold occurrences
- ◆ Tight capital structure with only 66.4m shares on issue - **exceptionally leveraged to exploration success**



BATTERY METAL INVESTMENT OPPORTUNITY

“Global switch to electric vehicles and renewable energy is happening”

Nickel

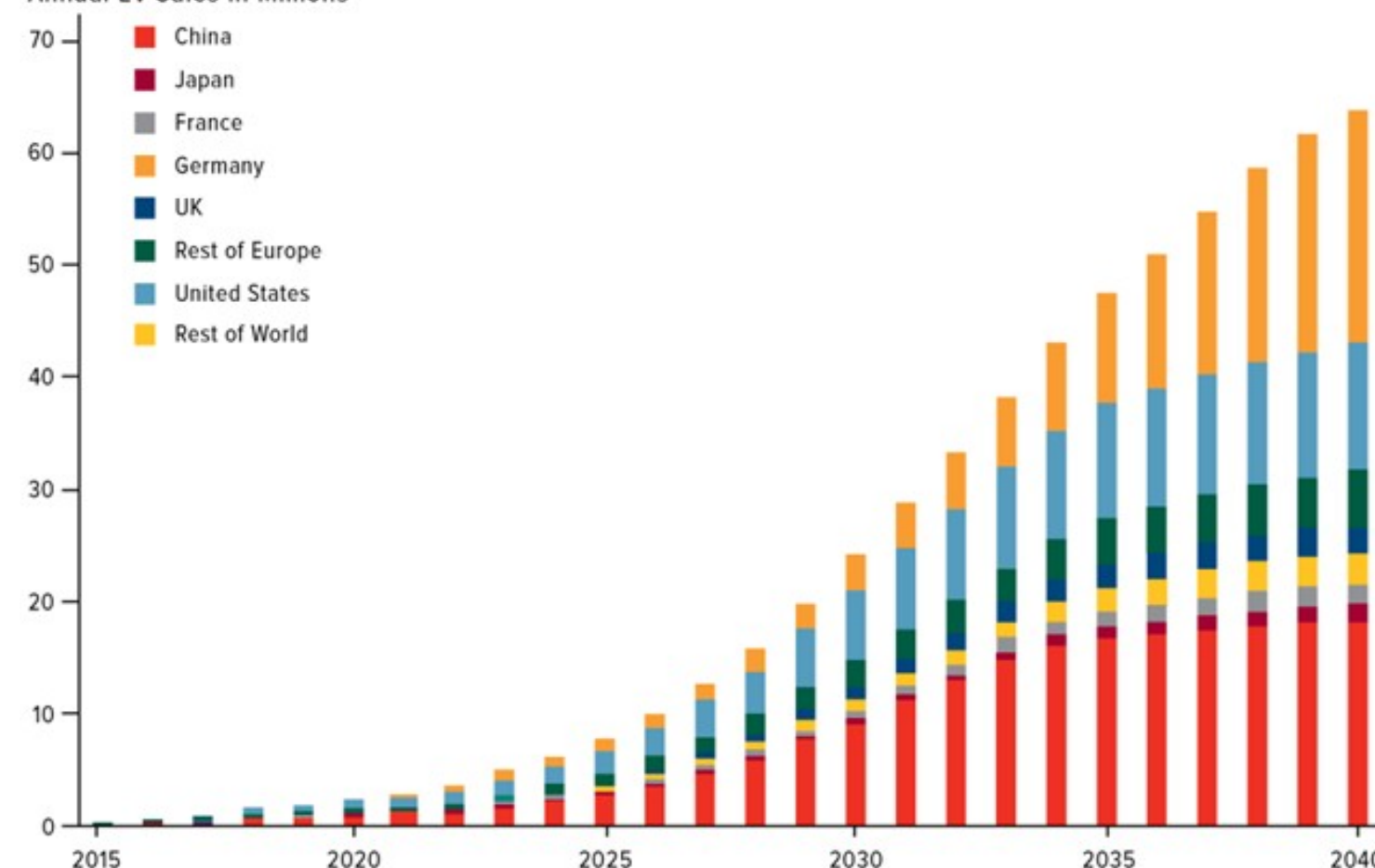
- ◆ Lithium-ion batteries used in EVs contain a cathode primarily composed of nickel
- ◆ Significant proportion of global nickel supply cannot be used in the production of lithium-ion batteries
- ◆ Battery-storage technologies will support nickel demand for several decades
- ◆ Tesla asking for “more nickel please” at recent “Battery Day” event

Copper

- ◆ Key electrical conductor in wide range of energy-related technologies
- ◆ EVs contain four times as much copper as a conventional medium sized car (around 80kg versus 20kg)
- ◆ Recent multi-year high in copper price on back of Chinese demand and supply concerns

Projected Annual Global Electric Vehicle Sales

Annual EV Sales In Millions

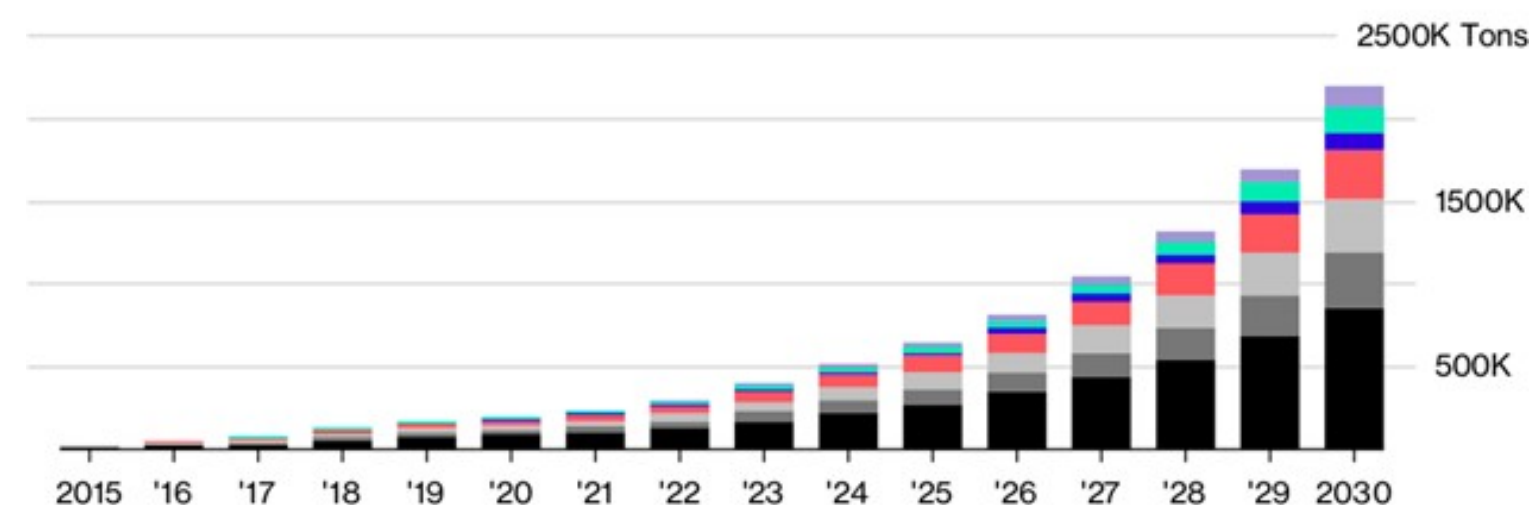


Source: Bloomberg New Energy Finance, Katasa Research, U.S. Global Investors



Global metals and materials demand from EV lithium-ion batteries

■ Graphite ■ Nickel ■ Aluminum ■ Copper ■ Lithium ■ Cobalt ■ Manganese



Source: Bloomberg New Energy Finance



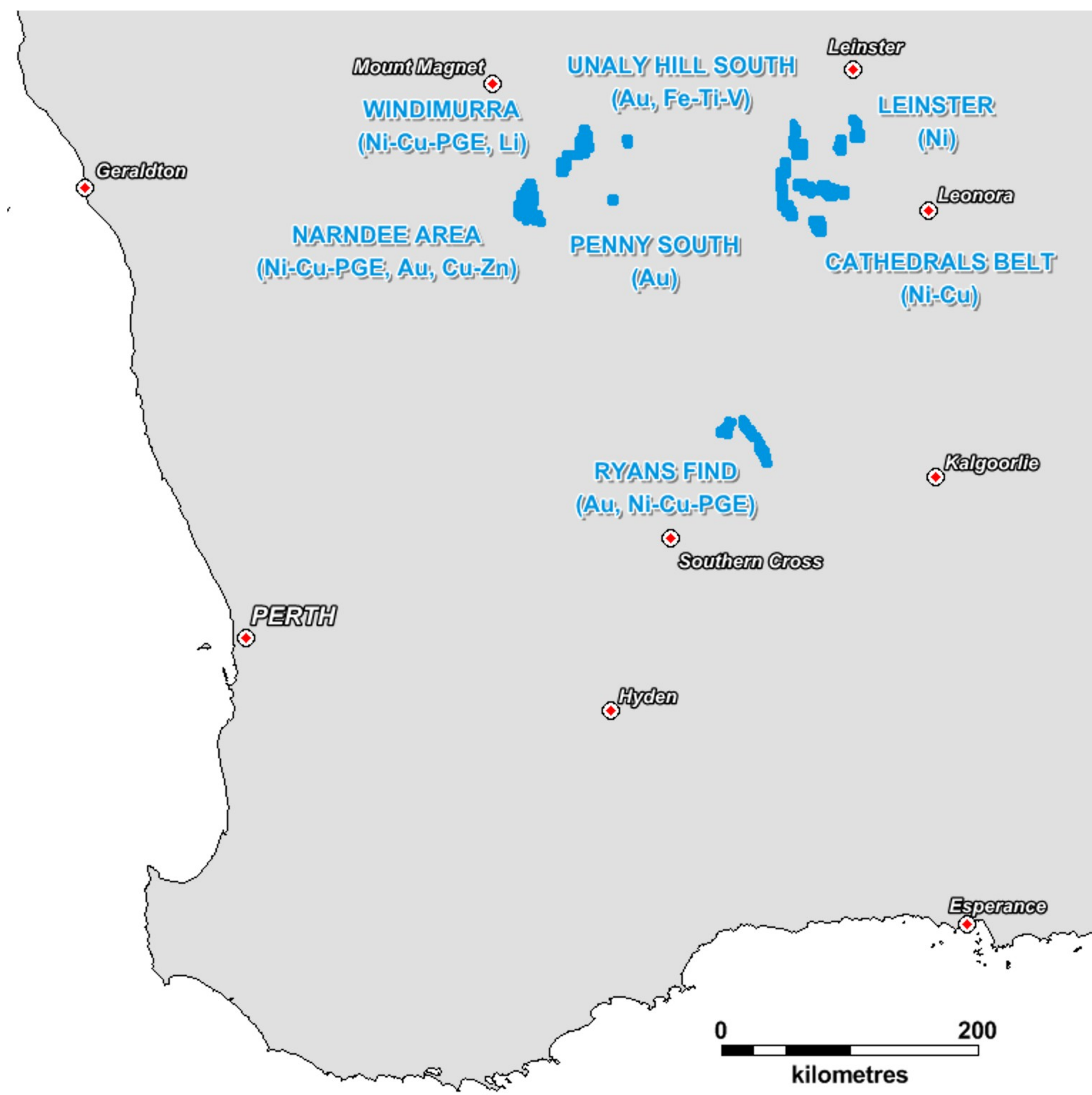
ALDORO'S PROJECTS

An exciting exploration portfolio with nickel and gold focus

Current Project Priority

- | | | |
|---|------------------|-----------|
| 1 | Narndee Area | Ni-Cu-PGE |
| 2 | Penny South | Au |
| 3 | Unaly Hill South | Au |
| 4 | Ryans Find | Au |

“Narndee is current priority project”





WHAT ARE LAYERED MAFIC INTRUSIONS?

Unique geology and magmatic processes

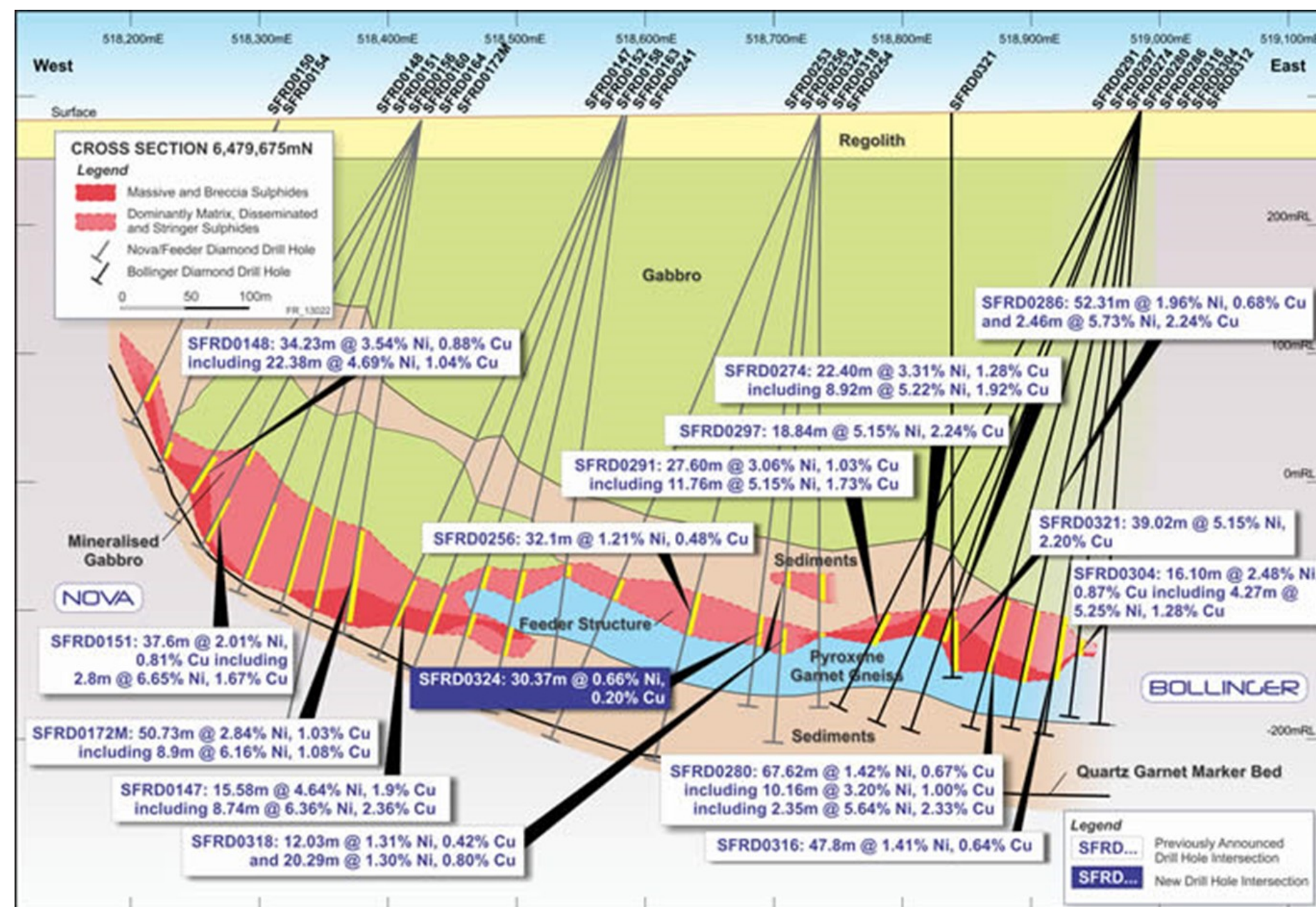
- ◆ Unique geology prospective for Ni-Cu-Co-PGE deposits
- ◆ Somewhat overlooked - majority of Ni sulphide deposits in WA are komatiite hosted
- ◆ Intrusions like Julimar (ASX:CHN) and Carr Boyd (ASX:ESR) known about for over 50 years now being unlocked by modern exploration techniques

Potential for exceptionally valuable deposits

- ◆ Voisey's Bay (Canada) sold for **C\$4.5Bn in 2.5 years** after discovery
- ◆ Nova-Bollinger (ASX:IGO) sold for **\$1.8Bn in 3 years** after discovery
- ◆ Julimar (ASX:CHN) reached **\$1Bn valuation in 7 months**

Two critical factors:

- ◆ Chemistry - magma must reach sulphur saturation to precipitated sulphide minerals
- ◆ Physics - focusing of sulphide minerals to form massive sulphide deposits

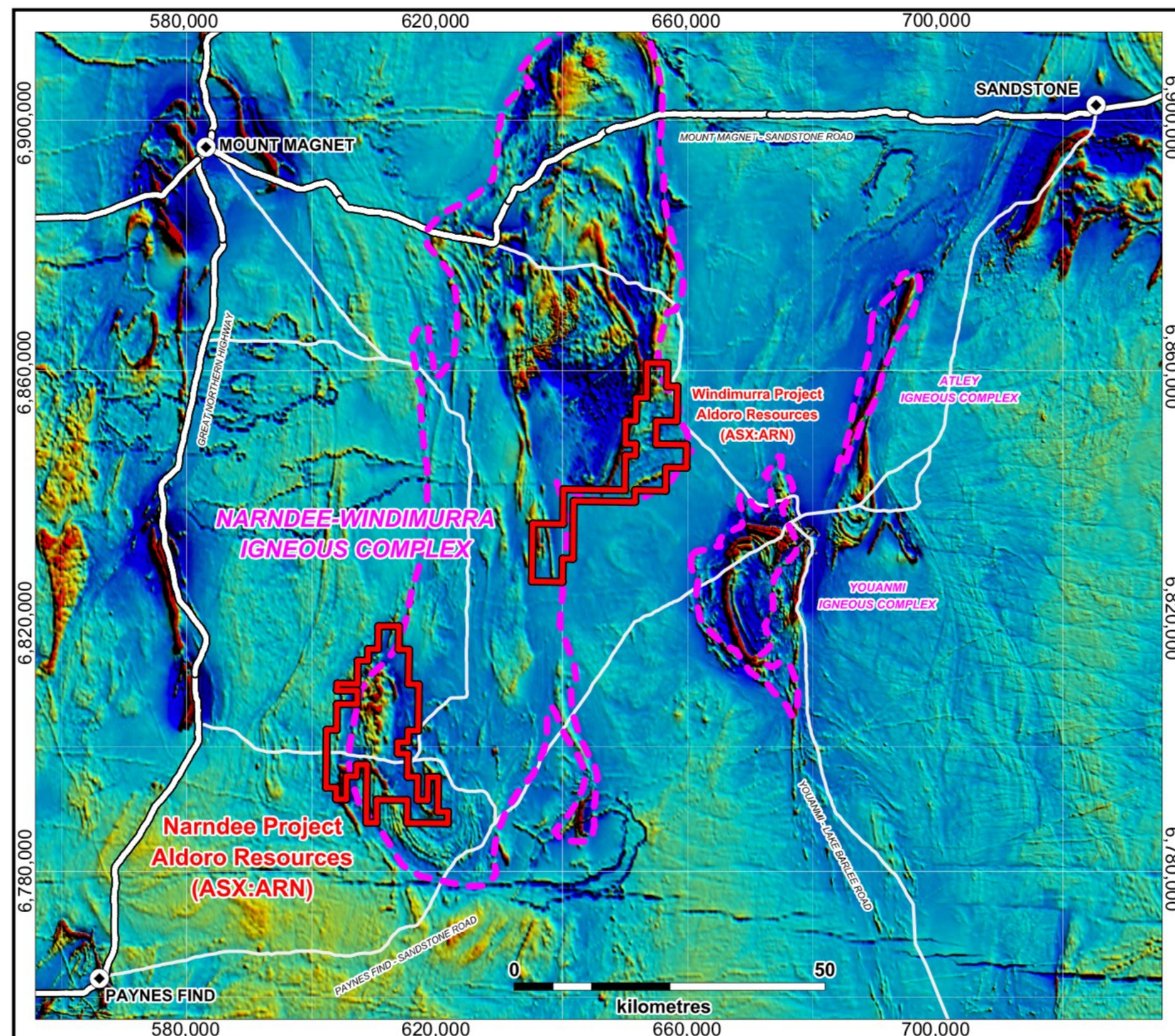




NARNDÉE-WINDIMURRA COMPLEX

Largest layered mafic-ultramafic complex in Australia

- ◆ Narndee-Windimurra Complex is **largest layered mafic-ultramafic complex in Australia** and top 10 in the world
- ◆ Aldoro holds 100% of the basal ultramafic portion of the Narndee Complex
- ◆ Narndee Project three tenements total 306km²
- ◆ Windimurra tenement application E59/2431 covers Mulyeron Hill ultramafic portion of the Windimurra Complex
- ◆ “Classic” layered stratigraphy with upper parts containing Fe-Ti-V deposits at Windimurra Mine, Youanmi and Atley Complexes
- ◆ Lower and mid portions historically explored for PGE’s following a Bushveld model
- ◆ **Limited dedicated Ni-Cu-PGE exploration**
- ◆ Bunting (2004)¹ interpretation suggests Windimurra prospective for Bushveld-style PGE and Narndee prospective for Ni-Cu-PGE



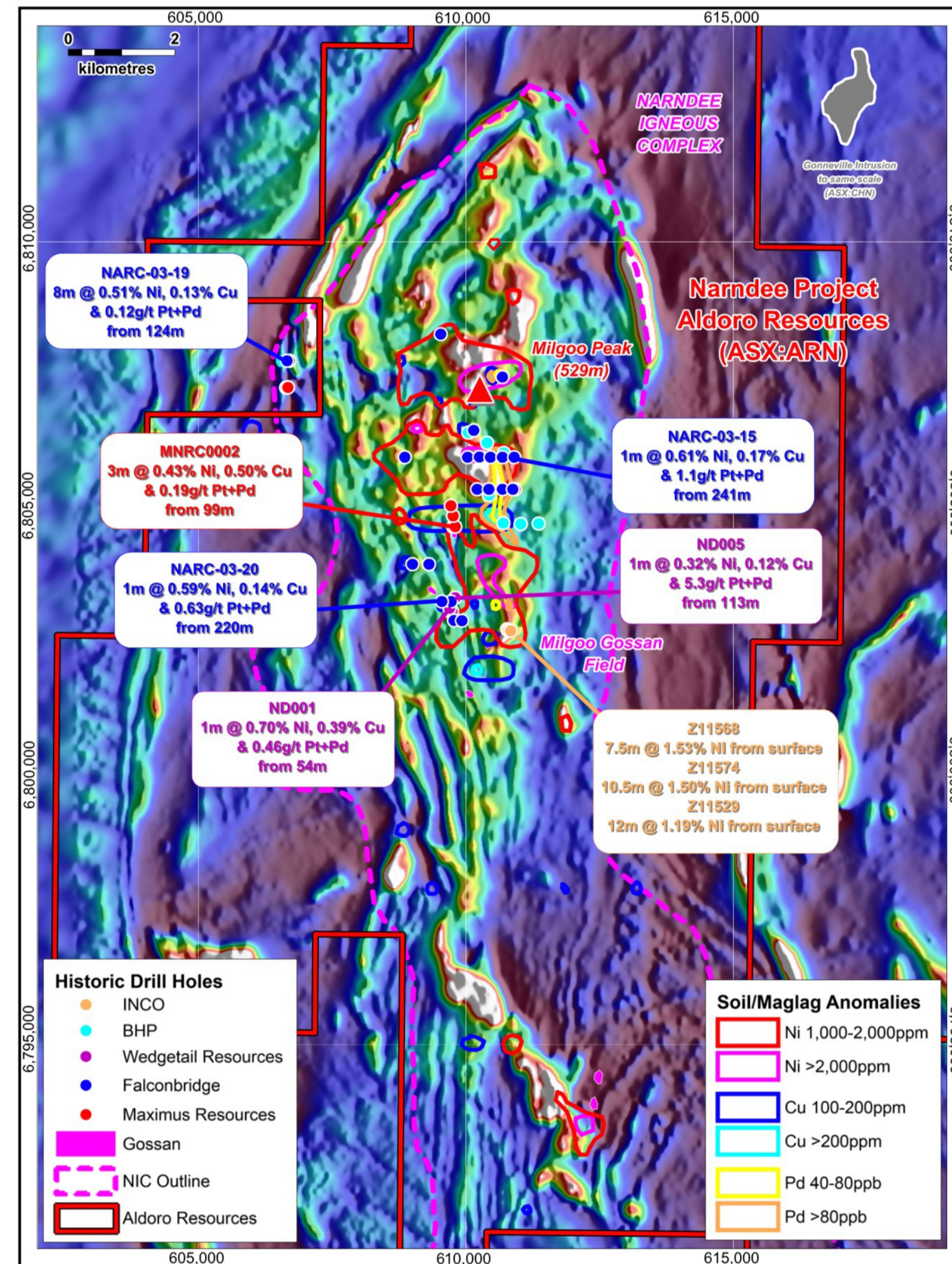
1. The Nickel-PGE Potential of the Narndee and Windimurra Intrusions, J. Bunting (2004)



NARNDEE IS GO!

Lots of “smoke” indicating working sulphide mineral system

- ◆ Historic exploration by major companies INCO, BHP and Falconbridge, focused on PGE’s using a Bushveld model
- ◆ **Working sulphide mineral system**
- ◆ Numerous **surface gossans** identified by INCO with shallow drill results up to **10.5m at 1.50% Ni** from surface
- ◆ Best individual element results of **0.70% Ni; 0.84% Cu; 0.21g/t Pt and 5.16g/t Pd**
- ◆ Extensive surface geochemical anomalies of up to **6,190ppm Ni, 672ppm Cu and 595ppb Pt+Pd in soil and maglag**



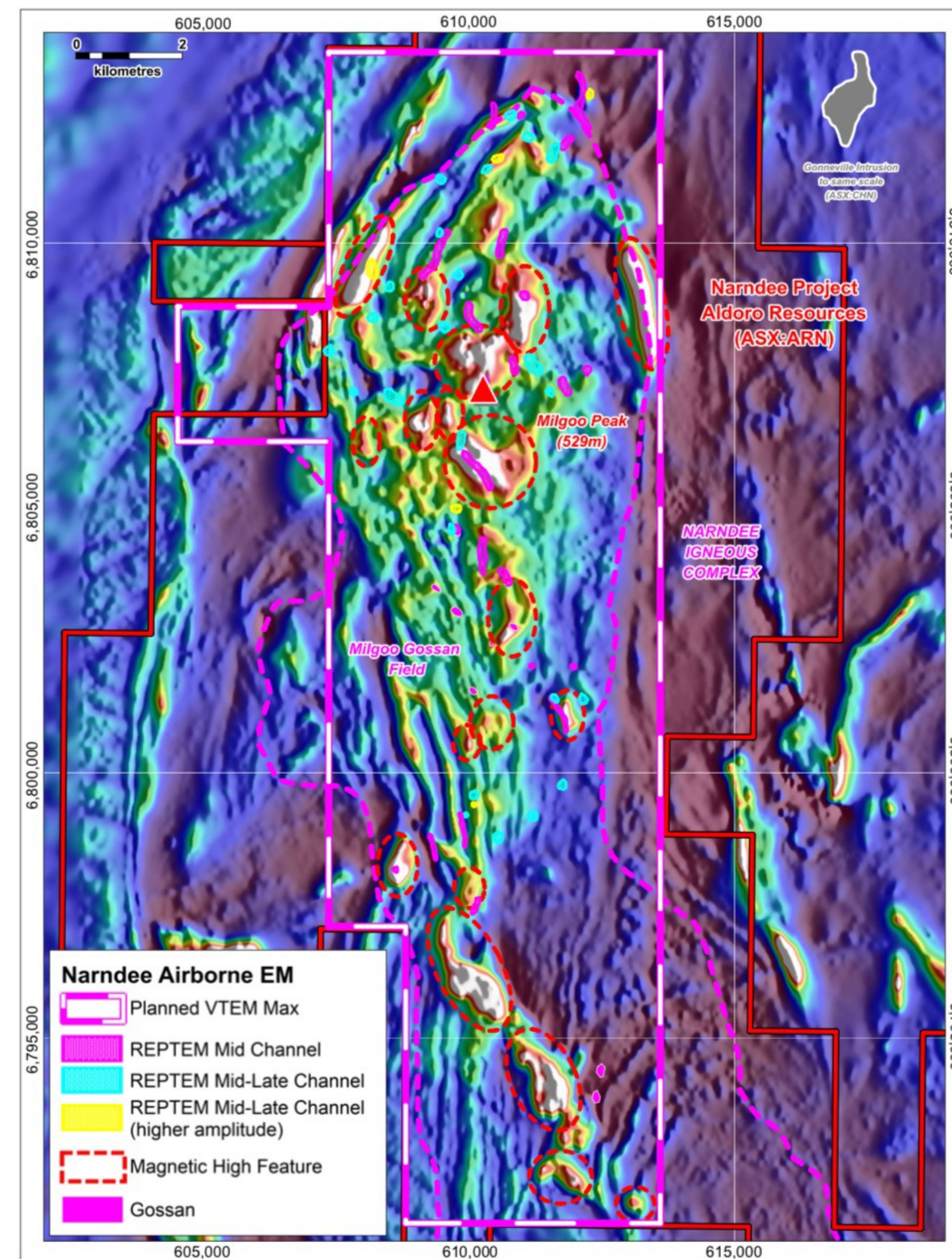


VTEM™ MAX AIRBORNE EM SURVEY

The best airborne EM system on the market

- ◆ High powered **VTEM™ Max** airborne EM survey **completed mid-November 2020**
- ◆ Approximate 1,000 line km survey at 150m spacing covering 137km² core of the Narndee Complex
- ◆ Maximus Resources previously flew a REPTTEM EM survey over the entire Narndee-Windimurra Complex in 2008¹
- ◆ REPTTEM a lower powered system inferior to VTEM™ Max
- ◆ Aldoro reprocessed REPTTEM survey identifying over 50 anomalies in mid-late channels

1. Maximus Resources, ASX, 20 August 2008

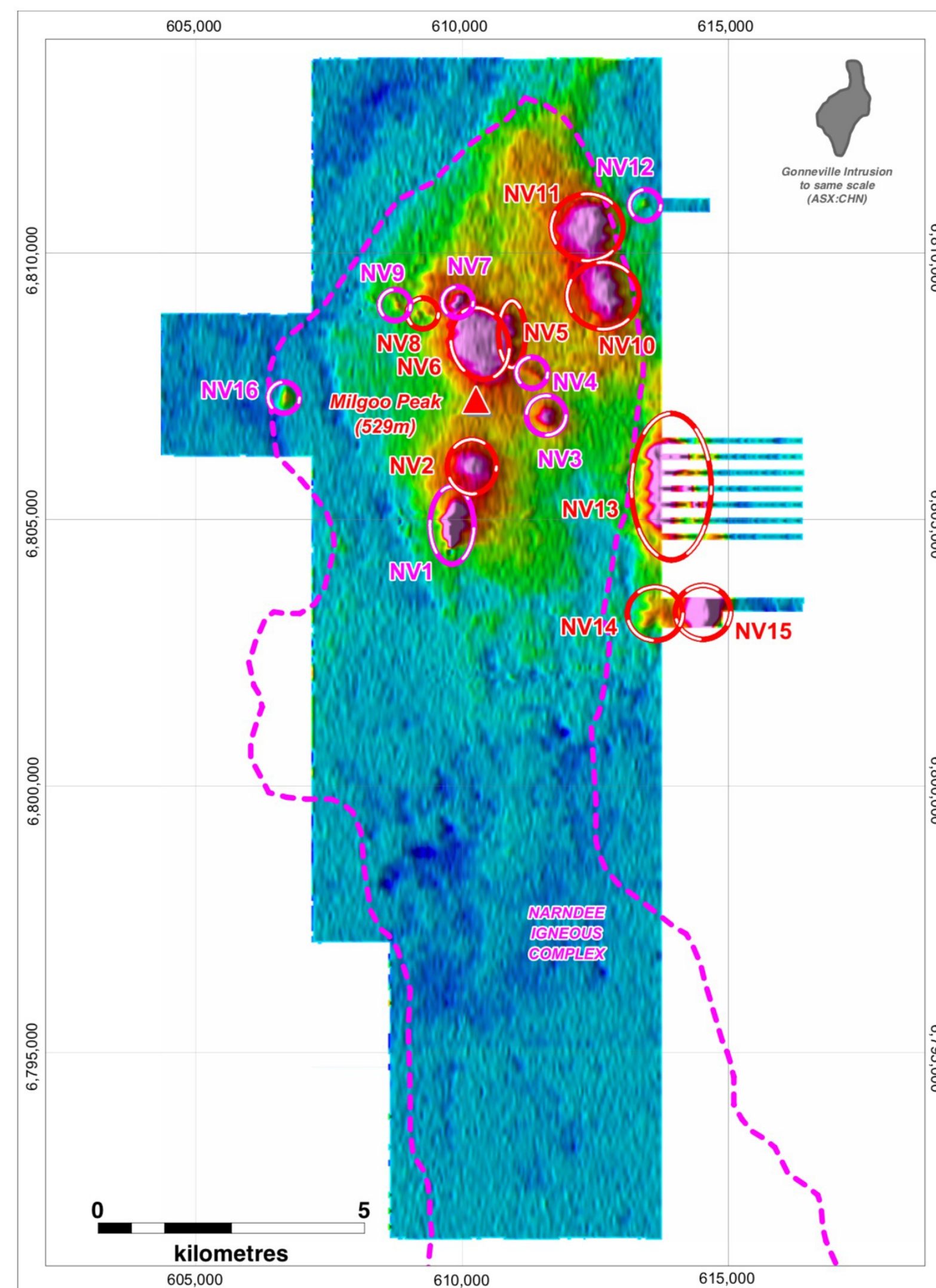




NARNDÉE TARGETS EMERGING

VTEM™ Max has identified 16 major targets

- ◆ **16 major targets** (7 bedrock conductors and 9 broad, deeper anomalies) identified within the core area of the complex
- ◆ Historic surface geochemistry correlates well with a number of targets; whilst others are completely untested by historic work
- ◆ Target NV1 previously identified by Maximus Resources and not effectively tested - NV2 could represent a deeper continuation of this
- ◆ MNRC0002 3m at 0.43% Ni, 0.50% Cu and 0.19g/t Pt+Pd
- ◆ Planning underway for ground based work, including gravity, EM, magnetics and geochemical programs, to define drill targets
- ◆ **Potential for exciting news flow over the next 6 months**





CORPORATE OVERVIEW

“Tight capital structure and cash in the bank to execute our exploration plan”

Aldoro Resources Limited

ASX:ARN

Shares Outstanding	66,380,803
Share Price (as at 25 November 2020)	\$0.155
Market Capitalisation	\$10.3 Million
Cash (as at 30 September 2020)	\$2.65 Million
Options	8,500,000

Experienced Board and Management

Joshua Letcher
Lincoln Ho
Troy Flannery

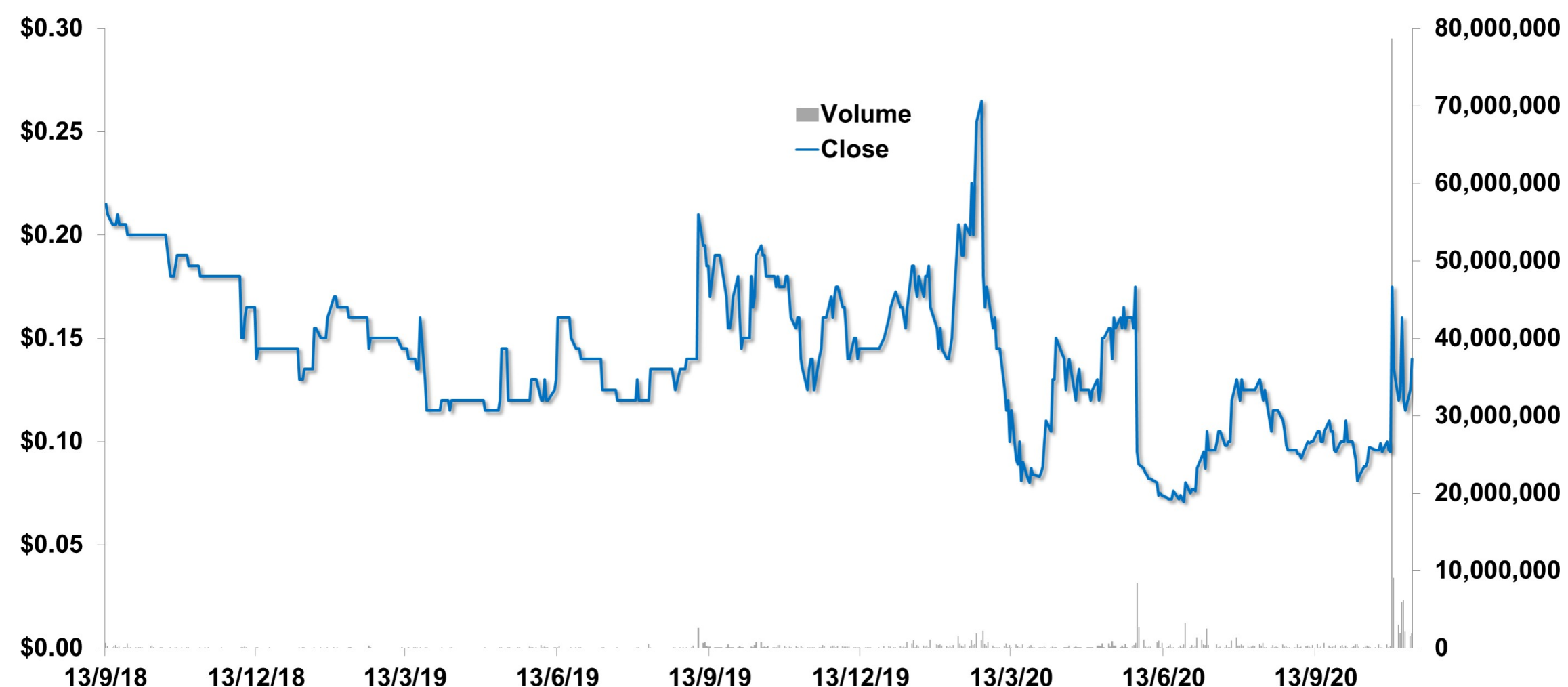
Non-Executive Chairman
Non-Executive Director
Non-Executive Director

Technical and management background
Financial and management background
Technical and management background

Major Shareholders

%

Pioneer Development Fund	9.5
Golden Venture Capital LLC	5.9
Tell Corporation Pty Ltd	3.9
Sacco Developments Australia Pty Ltd	3.3
Jetosea Pty Ltd	3.0
Papillon Holdings Pty Ltd	2.6
Top 20 Shareholders	48.4
Management	0.9





For further information please contact:

Caedmon Marriott
Company Executive

Email: contact@aldororesources.com

Website: aldororesources.com