



CORPORATE PRESENTATION

MARCH 2026

PILBARA GOLD | DISCOVERY PEDIGREE

ASX: ARV

Disclaimer & Important Notices

This presentation has been approved by the Board of Artemis Resources.

Referencing

This presentation does not contain any new material information. All exploration results and Mineral Resource information referred to in this presentation have previously been released to the ASX.

The presentation is based on information disclosed in the following Artemis ASX announcements:

Carlow Project – drilling results released on 23 November 2020.

Titan Project – rock chip sampling results released on 16 August 2024 and 10 October 2024; drilling results released on 29 October 2025, 19 December 2025, 21 January 2026 and 27 February 2026.

Cassowary Project – announcements released on 18 August 2025, 31 October 2025 and 24 December 2025.

The information in this presentation that relates to the Mineral Resource for the Carlow Project is based on information disclosed in the Artemis ASX announcement dated 13 October 2022. Artemis confirms that it is not aware of any new information or data that materially affects the information included in the relevant market announcement and that all material assumptions and technical parameters underpinning the estimates in the relevant market announcement continue to apply and have not materially changed.

Cautionary and Forward-Looking Statements

This presentation (the “Presentation”) has been prepared by Artemis Resources Limited (“ARV” or the “Company”). This Presentation contains general and background information about ARV’s activities current as at the date of the Presentation, and (i) does not purport to be completed; and (ii) should not be considered to be comprehensive or to comprise all the information that an investor should consider when making an investment decision. The information is provided in summary form, has not been independently verified, and should not be considered to be comprehensive or complete. The Company is not responsible for providing updated information and assumes no responsibility to do so. The contents of this Presentation have not been reviewed, authorised or otherwise approved by the UK Financial Conduct Authority (“FCA”), the Australian Securities and Investments Commission (“ASIC”), the Australian Securities Exchange (“ASX”) or any other regulatory body. Reliance on this Presentation for the purpose of engaging in any investment activity may expose an individual to a significant risk of losing all of the property or other assets invested. If you are in doubt about the content of this Presentation and/or any action you should take, you are strongly recommended to seek your own independent financial advice immediately from your stockbroker, lawyer, accountant or other independent financial adviser authorised by the FCA, ASIC or the ASX (as applicable).

This presentation contains historical facts, interpretations and statements relating to the Company’s current exploration projects, drill targets, plans, estimates, objectives, and strategies which are forward-looking statements. Such forward-looking statements involve known and unknown risks, uncertainties and other important factors beyond the Company’s control that could cause the actual results, performance, or achievements of the Company to be materially different from future results, performance or achievements expressed or implied by such forward-looking statements. Accordingly, any reliance you place on such forward-looking statements will be at your sole risk and the Company expressly disclaims any obligation or undertaking to disseminate any updates or revisions to any forward-looking statements contained in this presentation to reflect any changes in its expectations with regard thereto or any change in events, conditions or circumstances on which any statement is based. The information contained in this presentation is subject to change without notice. No representation or warranty, express or implied, is given as to the accuracy, completeness or fairness of the information or opinions contained in this presentation and no liability is accepted by the Company or any of its directors, members, officers, employees, agents, or advisers for any such information or opinions.

Competent Person Statement

Exploration Results

The information in this report that relates to Exploration Results was prepared by Mr Oliver Hirst M.Sci (Hons), a Competent Person who is a Member of the Australasian Institute of Mining and Metallurgy (MAusIMM). Mr Hirst is a technical consultant to Artemis Resources Limited and has sufficient experience that is relevant to the style of mineralisation and type of deposit under consideration and to the activity being undertaken to qualify as a Competent Person as defined in the 2012 Edition of the Australasian Code for Reporting of Exploration Results, Mineral Resources and Ore Reserves. Mr Hirst consents to the inclusion in this report of the matters based on his information in the form and context in which it appears.

Mineral Resources

The information in this report that relates to the Carlow Mineral Resource estimate is extracted from the Company’s ASX announcement dated 13 October 2022 and is based on information compiled by a Competent Person in accordance with the JORC Code (2012).

The Company confirms that it is not aware of any new information or data that materially affects the information included in that announcement and that all material assumptions and technical parameters underpinning the Mineral Resource estimate continue to apply and have not materially changed.

The Discovery Team

March 2026 Leadership Upgrade: The Board combines Pilbara discovery pedigree (the team behind behind Hemi and Katanning) with deep capital markets and governance expertise



Simon Lill
Non-Executive
Chairman

Former De Grey Chairman who oversaw the 11.2Moz Hemi discovery, adjacent to ARV. Led the ~\$5B Northern Star transaction.

Appointed 3 March 2026



Matthew Greentree
Executive Director

Former Ausgold MD; successfully grew the Katanning Gold Project to 3.04Moz. 25+ years experience specialising in resource discovery and growth strategies.

Appointed 3 March 2026



Bruce Garlick
Non-Executive Director

30+ years experience in mining, engineering, and project development across multiple commodities and jurisdictions.



Elizabeth Henson
Non-Executive Director

35+ years of international corporate governance and regulatory expertise, strengthening board oversight and compliance.



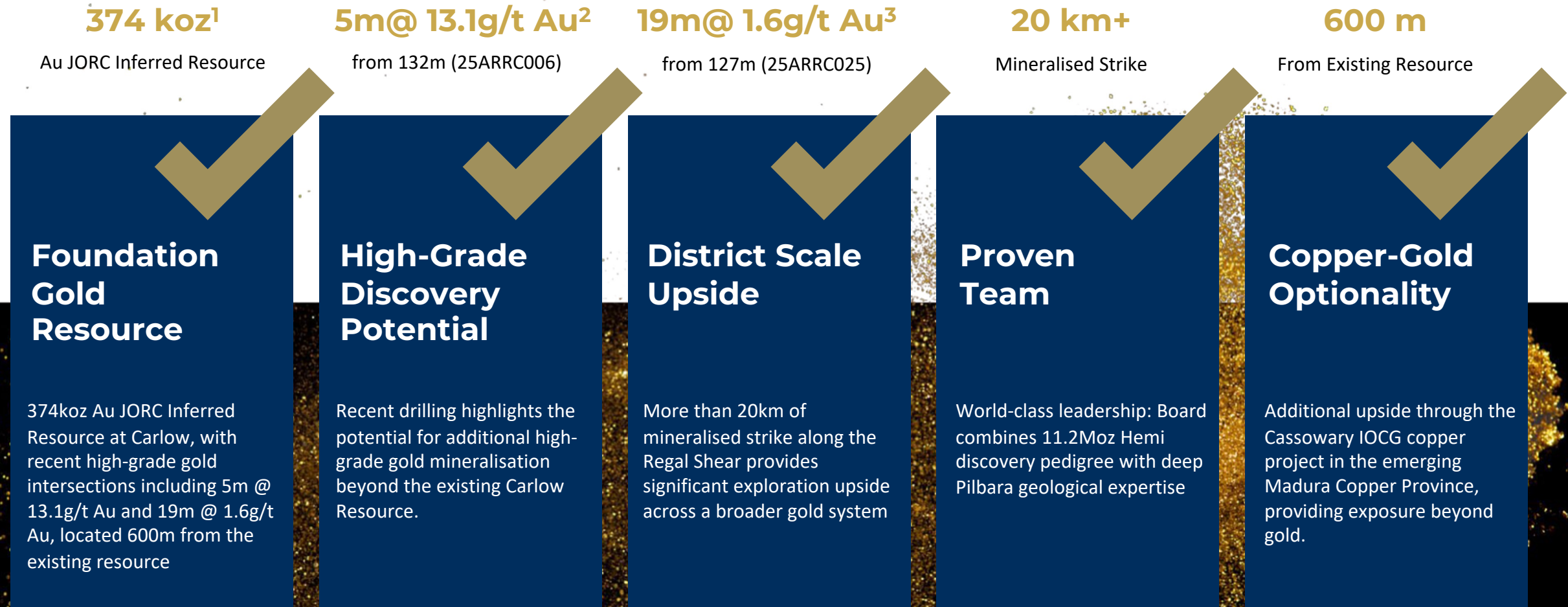
Jozsef Patarica
Director

30+ years in resources leadership with a strong focus on corporate strategy, project development, and disciplined capital execution.

will transition off the board
31 March 2026

Investment Highlights

Targeting gold in the Pilbara



Foundation Gold Resource

374koz Au JORC Inferred Resource at Carlow, with recent high-grade gold intersections including 5m @ 13.1g/t Au and 19m @ 1.6g/t Au, located 600m from the existing resource

High-Grade Discovery Potential

Recent drilling highlights the potential for additional high-grade gold mineralisation beyond the existing Carlow Resource.

District Scale Upside

More than 20km of mineralised strike along the Regal Shear provides significant exploration upside across a broader gold system

Proven Team

World-class leadership: Board combines 11.2Moz Hemi discovery pedigree with deep Pilbara geological expertise

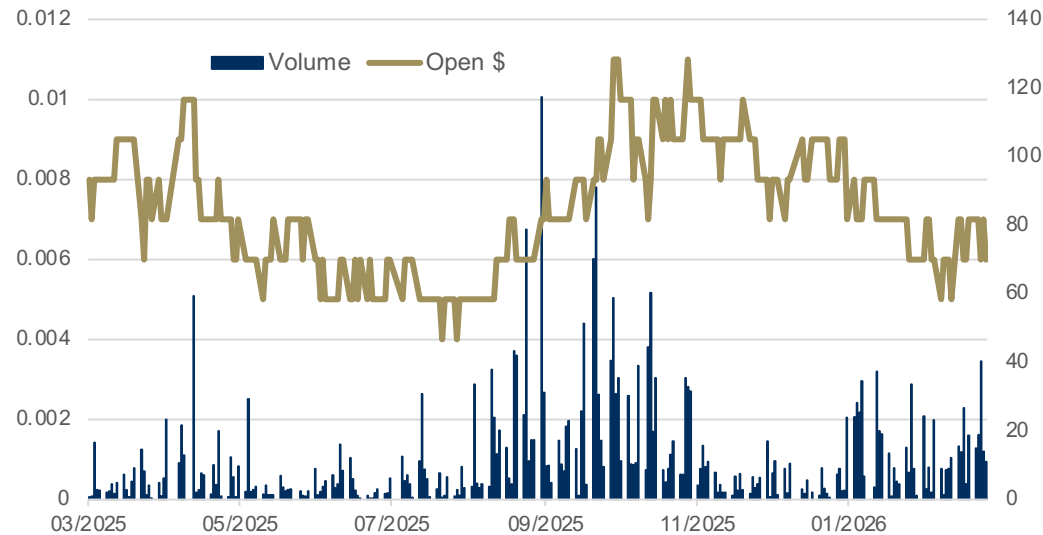
Copper-Gold Optionality

Additional upside through the Cassowary IOCG copper project in the emerging Madura Copper Province, providing exposure beyond gold.

Company Snapshot¹

ASX: ARV

Capital Structure	
Share Price A\$0.006	Shares 3.771bn ²
Market Cap. A\$22.6m	Cash A\$2.446m ³
EV A\$20.2m	Top 20 48%



¹ Snapshot as at 11 March 2026

² Refer ARV ASX Announcement "Appendix 2A – Application for Quotation of Securities" dated 19 September 2025

³ Refer ARV ASX Announcement "Quarterly Activities/Appendix 5B Cash Flow Report" dated 30 January 2026

NORTH PILBARA GOLD PROVINCE

Pilbara Gold

A rapidly unfolding story targeting
>1 million ounce potential

Carlow-Titan Gold System

Targeting large scale gold potential in Pilbara

Foundation



Carlow Gold-Copper System

374koz Au¹

JORC Inferred Resource

- ✓ Established Resource within significant gold-copper mineralised system
- ✓ Mineralisation remains open along strike and depth including **4m @ 11.1g/t Au and 2.0% Cu at 525m²**
- ✓ Structurally controlled deposit within the Regal Shear
- ✓ Resource provides foundation for district growth



High-Grade



Titan Gold Discovery

Growth Potential

Discovery Upside within Carlow-Titan gold system

5m @ 13.1g/t Au from 132m (25ARRC006)³
19m @ 1.6g/t Au from 127m (25ARRC025)⁴

- ✓ Located ~1.5 km from Carlow
- ✓ New structural zone identified open along strike
- ✓ Early drilling indicates larger system potential
- ✓ Multiple targets within 3 km



District Scale



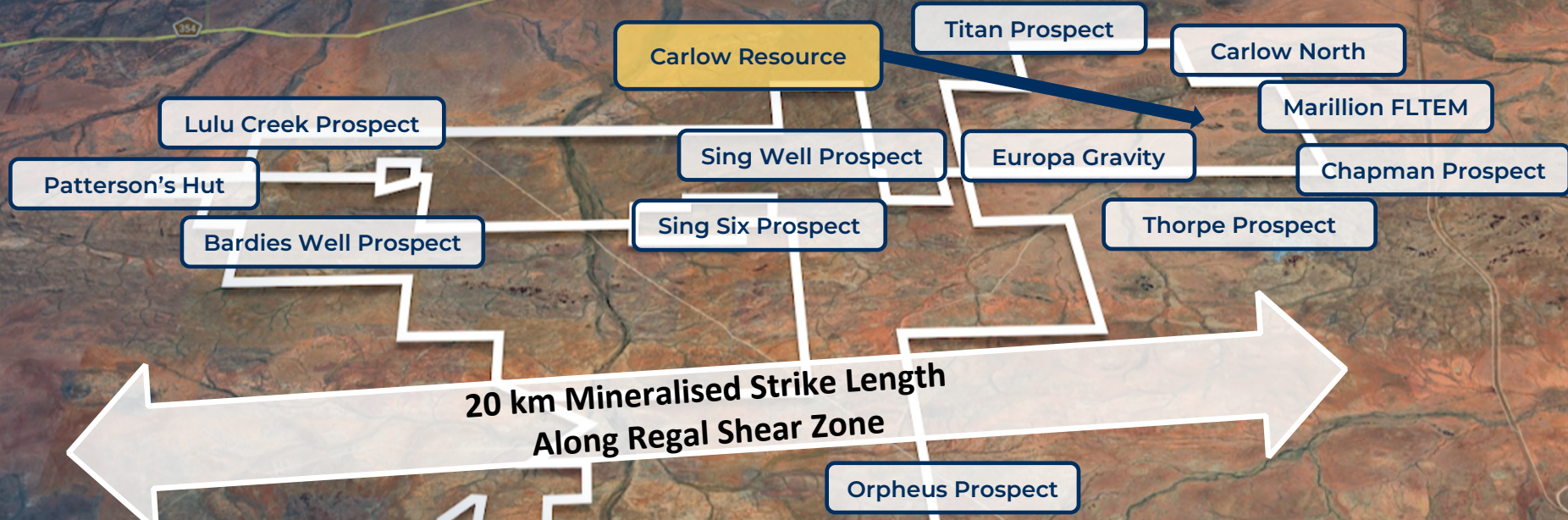
Multiple Targets

Potential

High-grade mineralisation confirming system potential:

- ✓ Multiple targets along a 20 km strike length
- ✓ Proximity to regional structures
- ✓ Major structural disruptions
- ✓ Multiple intrusions
- ✓ Favourable gold host rocks

Carlow-Titan Gold System



20 km Mineralised Strike Length
Along Regal Shear Zone

- ✓ 20 km of mineralised strike along Regal Shear zone
- ✓ Multiple intrusions and structural intersections
- ✓ Extensive hydrothermal alteration and quartz veining

Titan High-Grade Results

Newly identified high-grade gold system with large-scale potential

Results include 5m @ 13.1g/t Au¹

- Shear-hosted gold with **High-grade gold** mineralization within quartz veins from surface
- 1.5km from Carlow, potential to expand current Resource base
- Structural complexity within the Regal shear zone and prospective rock types provide major controls
- Strong hydrothermal alteration in rocks surrounding highest gold grades
- Highlights further potential for a large mineralized system surrounding Carlow

Cautionary Statement: Visual estimates of mineral abundance should never be considered a proxy or substitute for laboratory analyses where concentrations or grades are the factor of principal economic interest.

Visual estimates also potentially provide no information regarding impurities or deleterious physical properties relevant to valuations.

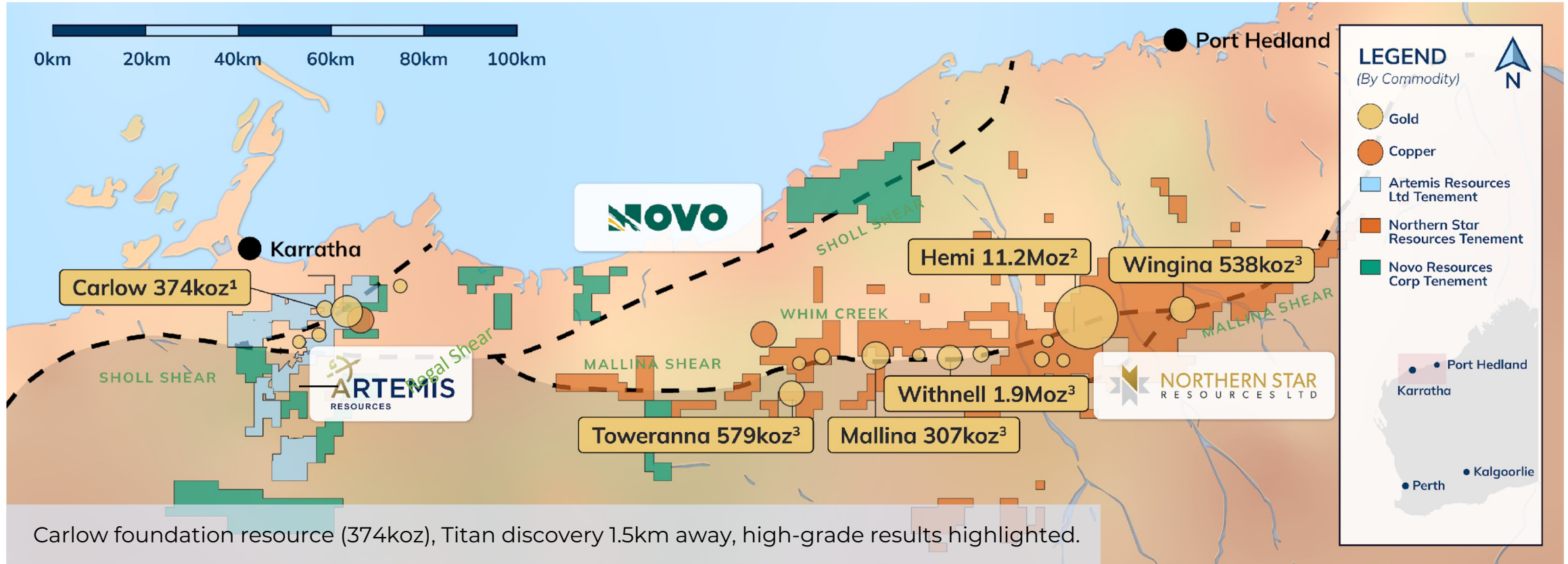


Gold in weathered quartz veins sampled from Titan prospect showing high grade gold in quartz veining and iron oxide alteration — hallmarks of the orogenic gold system within Regal Shear zone

¹Artemis ASX announcements dated 29 October 2025

District Scale Gold Belt: The Regal Shear

Artemis controls the Western end of the regionally significant 250km gold mineralized structural belt with major structural settings (thrusts, shears, folds) and multiple intrusions



¹ Carlow Mineral Resource: Reported above a cut-off of 0.7g/t AuEq within an optimised pit shell and 2.0g/t AuEq for underground using MSO shapes. The Resource is classified as an Inferred Mineral Resource in accordance with the JORC Code, 2012.

² Hemi Project: Reported above a 0.3g/t Au cut-off above 390m depth (within an optimised pit shell) and a 1.0g/t Au cut-off below 390m depth.

³ Northern Star Regional Projects: Cut-off grades vary by deposit (typically 0.5g/t Au for open pit and 1.0g/t Au for underground)

Refer appendix slide 23 or full details

Exploration Roadmap & Catalysts

Carlow is our foundation - Titan proves a larger system - Multiple targets demonstrate potential scale



Pilbara District **Gold > 1Moz**

- ✓ Foundation Resource gold-copper system
- ✓ Discovery and growth at Titan – Carlow environs and satellite targets
- ✓ Regional project generation focusing on key structural sites underway

Progressing from resource base to a potential direct-scale gold system

¹ Artemis ASX announcements dated 29 October 2025

² Artemis ASX announcements dated 19 December 2025

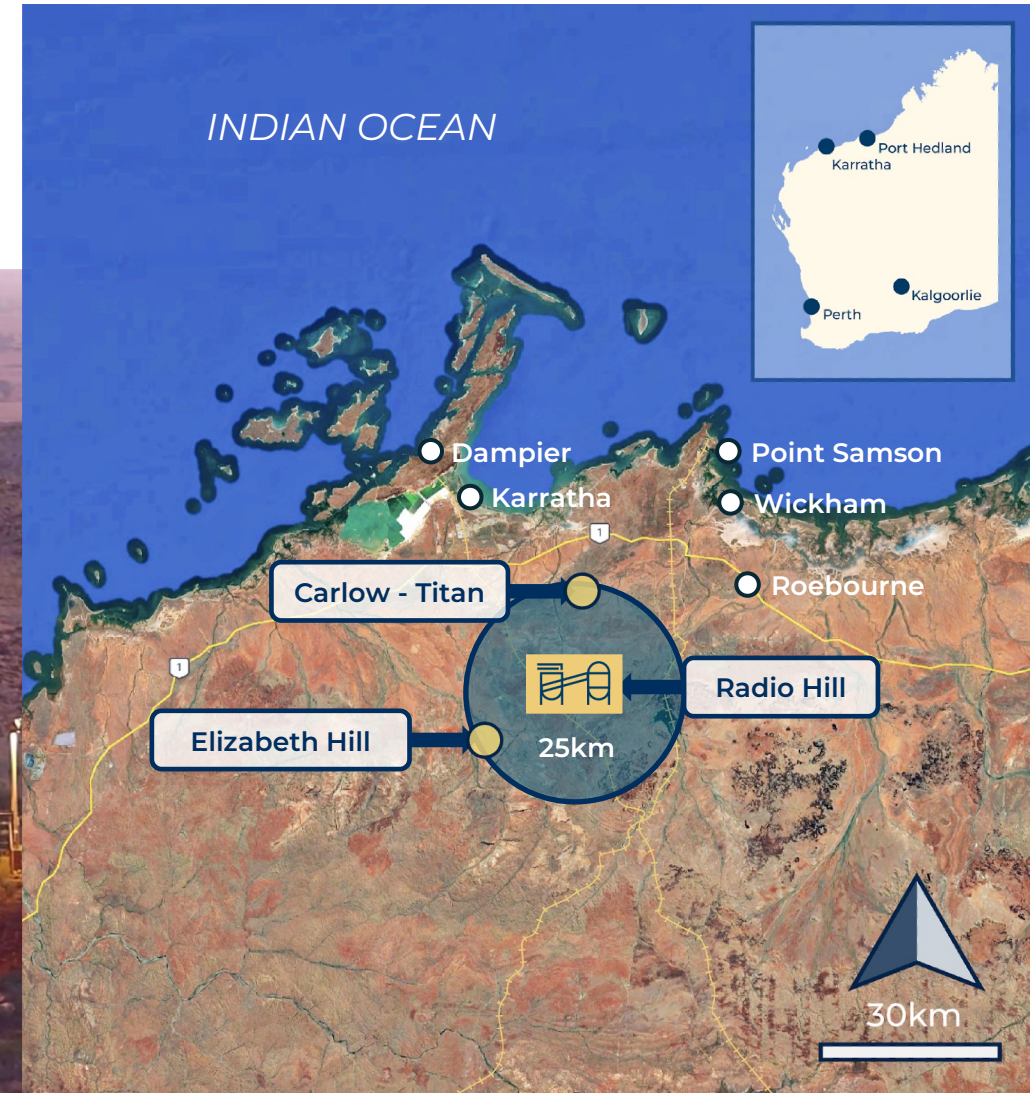
³ Artemis ASX announcements dated 13 October 2022

Radio Hill Processing Plant

Valuable Infrastructure Asset

100%-owned Ni-Cu concentrator with integrated gravity gold circuit (care & maintenance)

- Location: ~35 km south of Karratha with sealed-road access.
- Plant: Original Ni-Cu sulphide concentrator; historic nameplate ~425 ktpa; gravity gold circuit added in 2018.
- Status: Care & maintenance.
- Strategic fit: Near Artemis' Carlow-Titan; potential third-party/tolling options.



MADURA PROVINCE

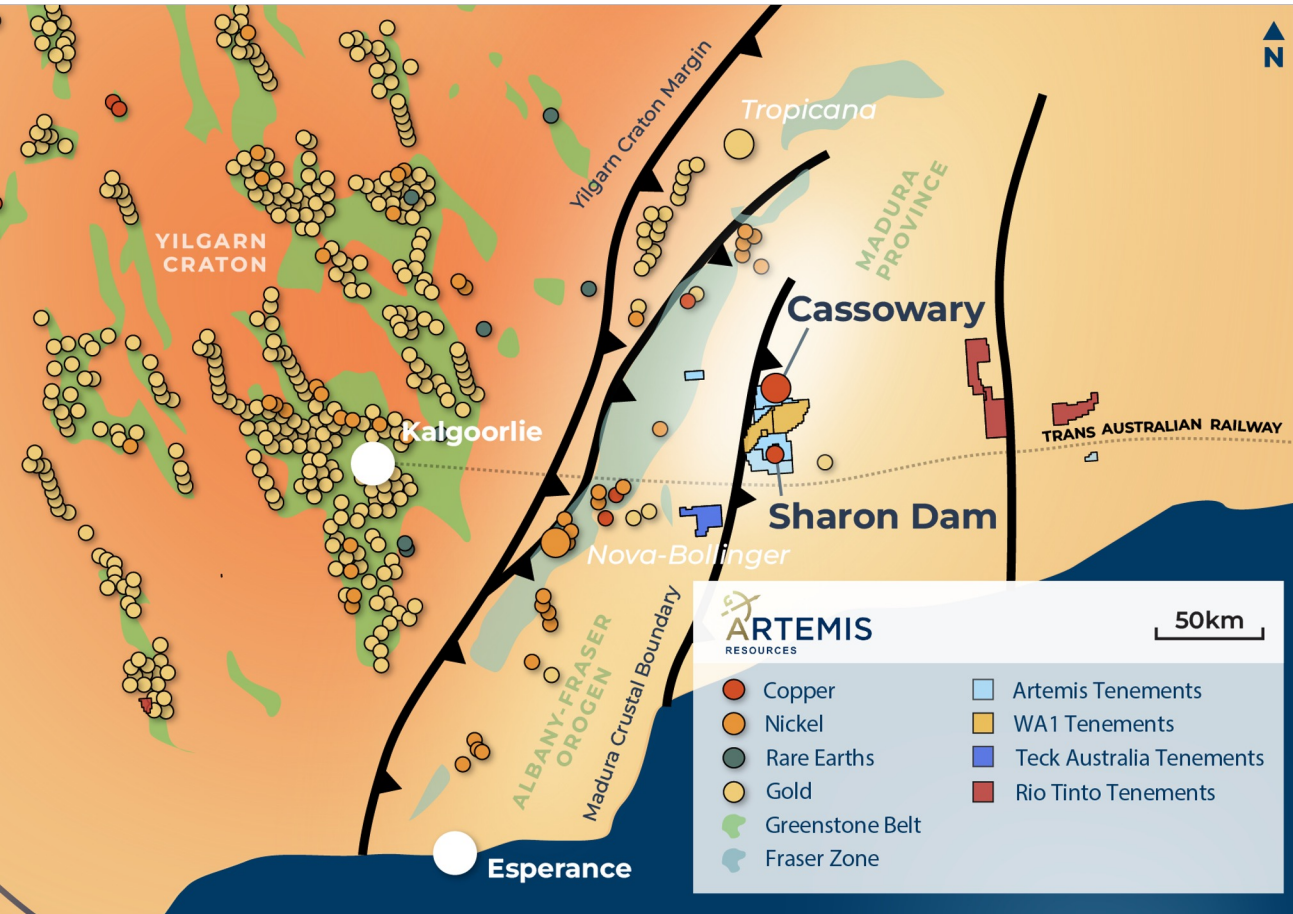
Cassowary Copper-Gold Project

New frontier for copper



Cassowary Copper-Gold Optionality

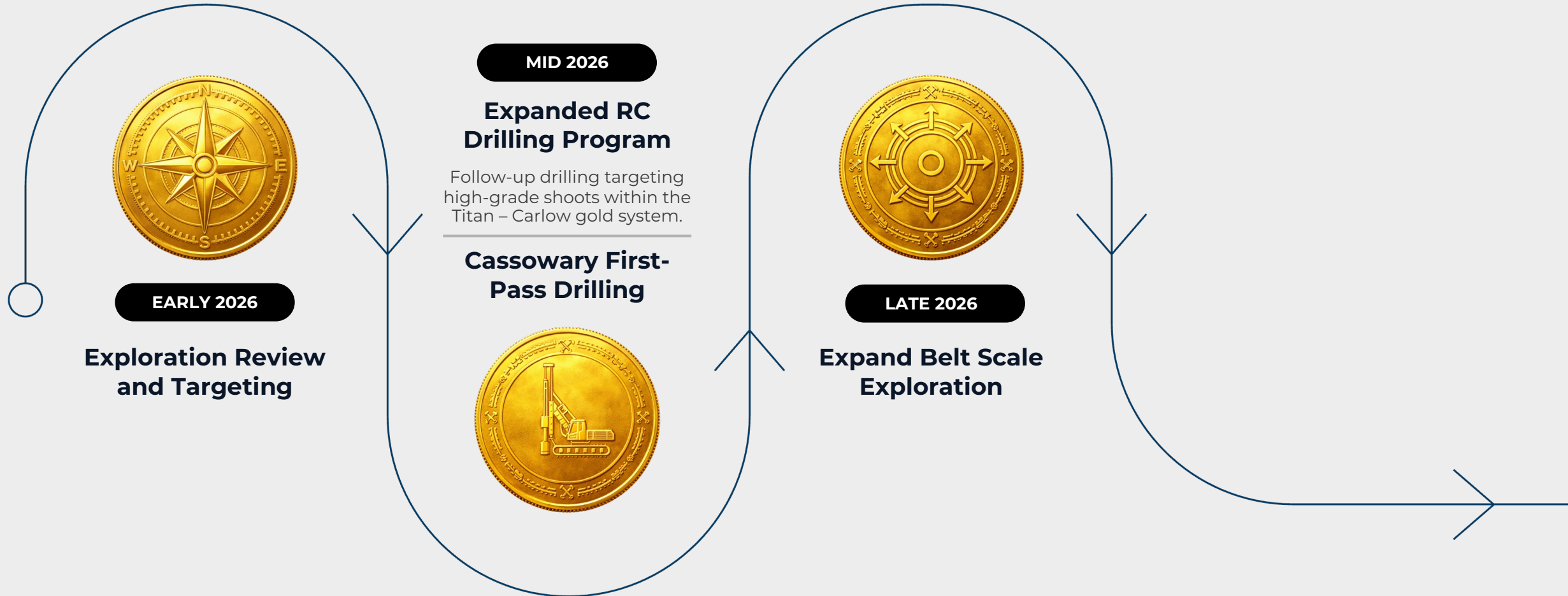
First-mover IOCG position over a major magnetic intrusion on crustal-scale rift boundary, government co-funding, partnership pathway



- Large, undrilled IOCG-style target in Western Australia, providing exposure to large copper and gold target.
- Strategic positioning over a major magnetic intrusion located on a crustal-scale rift boundary.
- Undrilled Iron Oxide Copper Gold target offering significant exposure to copper and gold upside.
- High-impact target with potential to attract major corporate or strategic partnership interest.
- Initial drilling costs supported by government EIS co-funding

Upcoming Catalysts

Timeline of upcoming milestones



Why Invest

Gold Price Leverage: Unhedged exposure to gold at all-time highs, in the same geological province that produced Hemi



Discovery Potential

High-grade gold discovery at Titan confirms potential of a larger gold system



Proven Leadership with Discovery Focus

Board and management team with recent discovery and development credentials.



Clear Growth Strategy

Gold focused exploration targeting high-grade ounces.



Near-Term Catalysts

Multiple drilling and exploration milestones



Tier 1 Copper and Gold Opportunity

Large-scale IOCG target at Cassowary

Positioned for growth with a high-grade discovery in Tier-1 jurisdictions

Artemis Resources

ASX: **ARV**



Scan to subscribe to email alerts

Matthew Greentree

Executive Director

info@artemisresources.com.au

+61 8 6261 5463

Investor Relations

Investability Partners

investors@investability.com.au

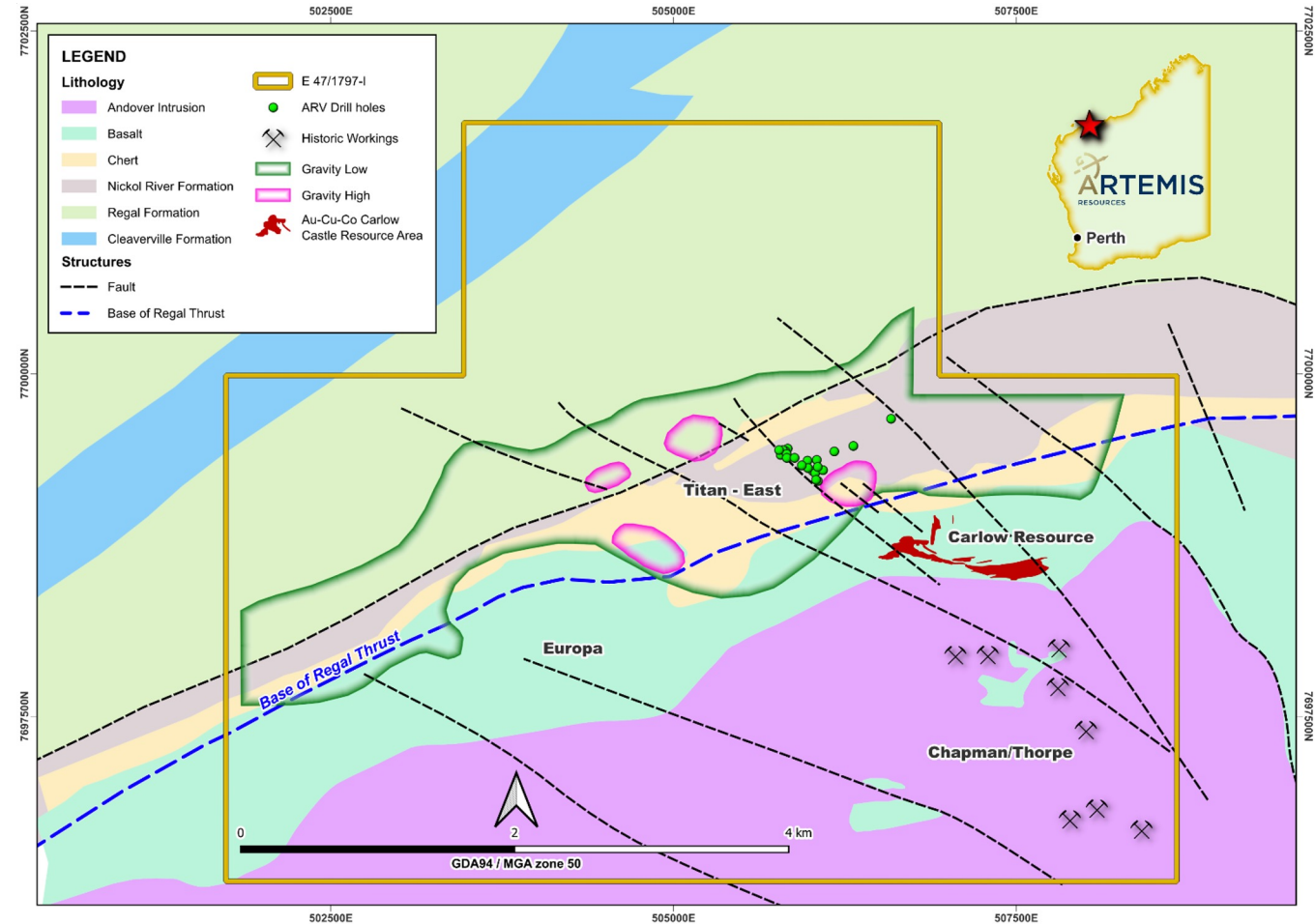
artemisresources.com.au

Appendix

Carlow-Titan Gold System

Resource Foundation

- Mineralisation near surface
- Open at depth Carlow resource (hole 20CCAD003) intersected **4m @ 11.1g/t Au** and 2.0% Cu at 525m below surface¹ - no follow up drilling.
- Near-mine satellite pipeline: Three satellite gold targets within 3 km of Carlow - Titan, Europa, Chapman/Thorpe.
- Gold – copper Mineralisation at surface identified along 20km strike length within Regal Shear zone
- A new work underway to develop improved geological understanding of regional potential



Carlow - Titan plan view

¹ Reference Artemis ASX announcement 23 November 2020

Titan – High Grade Gold

Early drilling already demonstrates a potentially larger high-grade gold system

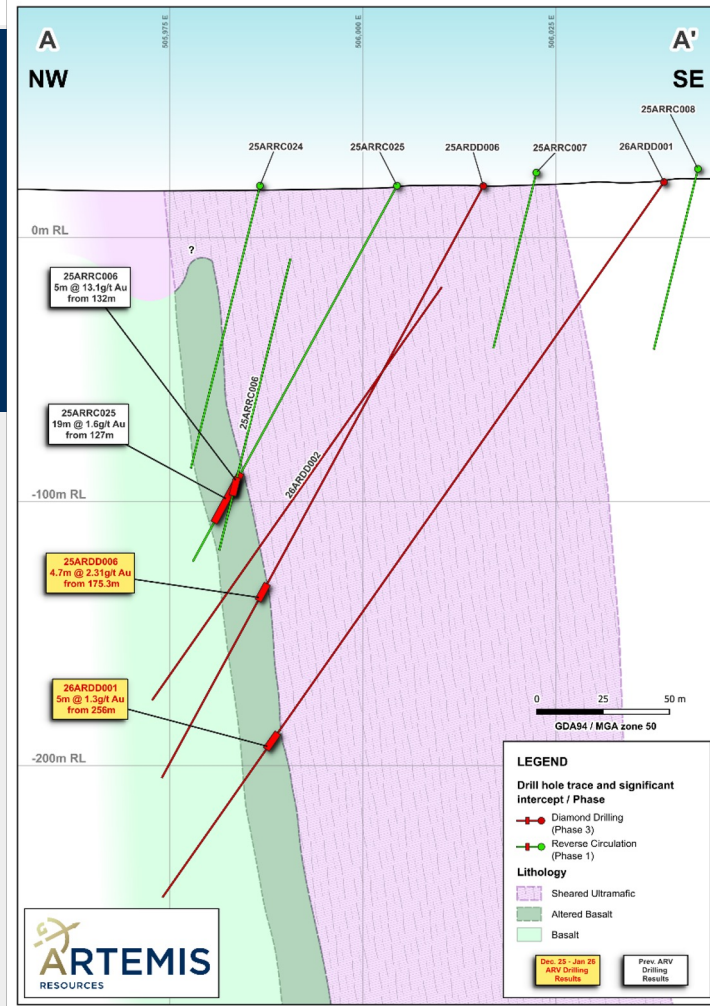
New RC and diamond drilling at titan has intersected gold mineralisation:

- **5 m @ 13.1g/t Au** from 132 m (25ARRC006)¹
- **4.7 m @ 2.3g/t Au** from 175.27m in 25ARDD006²,
- **5 m @ 1.3g/t Au** from 256m (26ARDD001)²
- **19 m @ 1.6g/t Au** from 127m (25ARRC025)³

- ✓ **Proximity:** ~1.5km from Carlow (374koz Au, JORC Inferred)⁴, leveraging existing geological understanding.
- ✓ **Geology:** Shear-hosted orogenic system characterised by extensive alteration and quartz veining within Regal Shear zone.
- ✓ **Near Surface Mineralisation** intersected from ~120m depth.
- ✓ **Footprint:** Drill tested over ~600m along strike; remains open along strike and at depth.

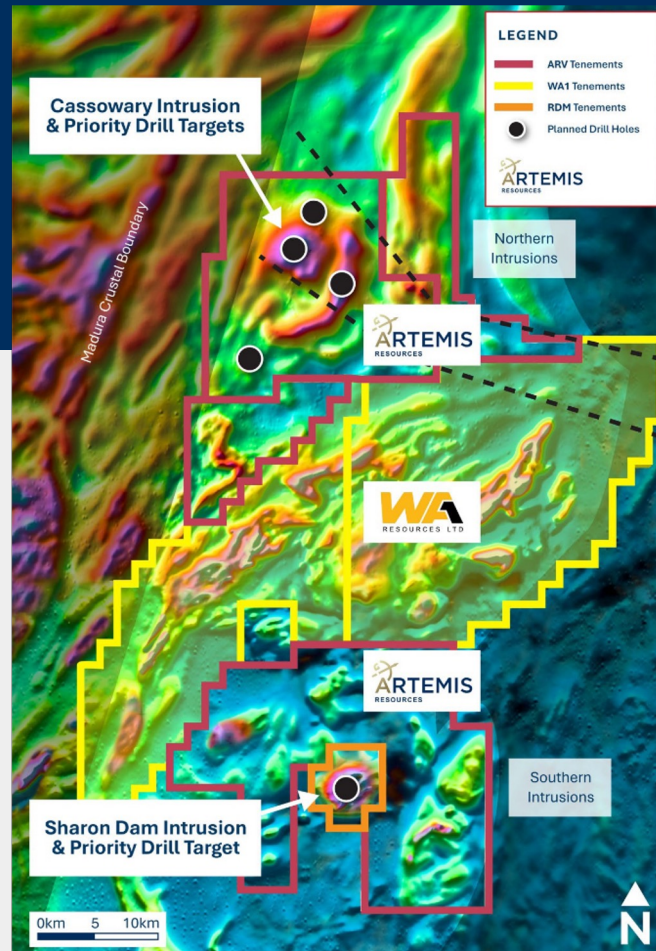
Key Takeaways

Early drilling indicates potential for a larger high-grade gold mineralisation



Discovery Potential

Artemis is a first mover in a highly-prospective underexplored belt



High impact drill program

- First drilling targeting several intrusions for IOCG style copper and gold mineralisation planned 2025
 - Drilling planned with Four holes to test Cassowary with part funding by government EIS funding
 - Cassowary Intrusion is the largest magnetic intrusion in belt
- ✓ **Target Setting:** Numerous intrusions within a >30km wide rift zone along major crustal boundary.
 - ✓ **Geology:** Cassowary interpreted to be hosted within a >30 km along fault zone which has disrupted surrounding geology.
 - ✓ **Belt Scale:** Tenements covering along an extensive position along Madura boundary.
 - ✓ **Regional Activity:** Increasing with WA1 and Teck active along same belt.

Key Takeaways

Large iron oxide copper gold (IOCG) target with Tier-1 scale potential

Appendix 1 — Resource Table

JORC Mineral Resource Estimate

Greater Carlow Inferred Mineral Resource by weathering state^{1,2,3}

Domain	Tonnes (Mt)	AuEq (g/t)	Au (g/t)	Cu (%)	Co (%)	Au (oz)	Cu (t)	Co (t)
Oxide	1.29	1.5	0.8	0.59	0.07	34,000	8,000	1,000
Transition	1.49	2.0	1.2	0.84	0.09	56,000	13,000	1,000
Fresh	5.96	2.8	1.5	0.73	0.10	285,000	44,000	6,000
Total	8.74	2.5	1.3	0.73	0.09	374,000	64,000	8,000

Greater Carlow Inferred Mineral Resource by area above a cut-off of 0.7g/t AuEq^{1,3}

Domain	Tonnes (Mt)	AuEq (g/t)	Au (g/t)	Cu (%)	Co (%)	Au (oz)	Cu (t)	Co (t)
Main	6.33	2.4	1.3	0.70	0.08	271,000	44,300	5,100
Quod Est	0.19	3.2	1.5	0.85	0.24	9,000	1,600	450
Crosscut	0.73	2.2	0.7	0.99	0.09	16,000	7,300	650
Total	7.25	2.4	1.3	0.73	0.09	296,000	53,200	6,200

Greater Carlow Inferred Mineral Resource by area above a cut-off of 2.0g/t AuEq^{2,3}

Domain	Tonnes (Mt)	AuEq (g/t)	Au (g/t)	Cu (%)	Co (%)	Au (oz)	Cu (t)	Co (t)
Main	1.09	3.1	1.9	0.57	0.11	66,000	6,250	1,200
Crosscut	0.39	3.1	1.0	1.14	0.14	12,500	5,560	550
Total	1.49	3.1	1.6	0.72	0.12	78,500	10,700	1,750

Gold Equivalent formula

The gold equivalent formula used in the calculation of an Au Eq grade uses the following parameters: It is the Company' view that all elements contributing to the gold equivalent calculation have the potential to be extracted and sold.

Oxide	Au Eq. equation = Au (g/t) + Cu(%) x 0.86 + Co(%) x 2.31
Transition	Au Eq equation = Au (g/t) + Cu(%) x 0.81 + Co(%) x 2.17
Fresh	Au Eq equation = Au (g/t) + Cu(%) x 1.31 + Co(%) x 3.96

Metallurgical recoveries shown above are assumed based on available metallurgical test work as reflected in the input values provided in this table and detailed in pages 11 and 12, including Table 5, of the Company's announcement dated 13 October 2022.

Significant inputs to the Mineral Resource

Parameter	Input value
Overall slope angles	Oxide 40°, Transition 45°, Fresh 50°
Processing cost	A\$50/t
Gold recoveries	Oxide 96%, Transitional 93.5%, Fresh 93%
Copper recoveries	Oxide 61%, Transitional 56%, Fresh 90.5%
Cobalt recoveries	Oxide 47%, Transitional 43%, Fresh 78%
Mining costs	A\$2.70/t + 0.5c/t per m below 30mRL, thereafter add Transitional A\$0.25/t and Fresh A\$0.50/t. OP strip ratio 12:1
NSRs (incl. payability, royalty and treatment and refining costs)	Gold: 94%, Copper 84%, Cobalt 41%
Gold price	A\$2,600/oz
Copper price	A\$12,699/t
Cobalt price	A\$90,478/t
Au royalty (in dore)	2.5%
Au royalty (in concentrate)	5%
Cu royalty	5%
Co royalty	5%

¹ Reported above a cut-off of 0.7g/t AuEq within an optimised pit shell (current as at 13 October 2022).

² Reported above a cut-off of 2.0g/t AuEq for underground using MSO shapes (current as at 13 October 2022).

³ The Resource is classified as an Inferred Mineral Resource in accordance with the JORC Code, 2012. All tonnes are dry metric tonnes. Figures may not compute due to rounding.

Appendix — References

Newly identified high-grade gold system with large-scale potential

Company	Stock Code	Project	Stage of development	Measured			Indicated			Inferred			Total			Source
				Mt	g/t Au	koz	Mt	g/t Au	koz	Mt	g/t Au	koz	Mt	g/t	koz	
Artemis Resources Ltd.	ASX:ARV	Carlow Mineral Resource*	Resource Definition							8.74	1.3	374	8.74	1.3	374	13 October 2022: New High-Grade Au-Cu-Co Resource at Greater Carlow
Northern Star	ASX:NST	Hemi	Acquired May 2025	12.7	1.4	588	148.5	1.3	6,261	102.7	1.3	4,326	263.9	1.3	11,174	14 November 2024: Hemi Gold Project Mineral Resource Estimate 2024
Northern Star	ASX:NST	Withnell	Acquired May 2025	1.0	1.8	56	16.2	1.6	835	16.5	1.8	960	33.7	1.7	1,871	14 November 2024: Hemi Gold Project Mineral Resource Estimate 2024
Northern Star	ASX:NST	Toweranna	Acquired May 2025				8.2	1.6	421	2.7	1.8	157	10.8	1.7	579	14 November 2024: Hemi Gold Project Mineral Resource Estimate 2024
Northern Star	ASX:NST	Wingina (Eastern MC)	Acquired May 2025	3.1	1.7	173	2.5	1.5	122	6.3	1.2	243	11.9	1.4	538	14 November 2024: Hemi Gold Project Mineral Resource Estimate 2024
Northern Star	ASX:NST	Mallina	Acquired May 2025				1.6	1.2	64	5.1	1.5	243	6.8	1.4	307	14 November 2024: Hemi Gold Project Mineral Resource Estimate 2024

Notes:

¹ Carlow Mineral Resource: Reported above a cut-off of 0.7g/t AuEq within an optimised pit shell and 2.0g/t AuEq for underground using MSO shapes. The Resource is classified as an Inferred Mineral Resource in accordance with the JORC Code, 2012.

² Hemi Project: Reported above a 0.3g/t Au cut-off above 390m depth (within an optimised pit shell) and a 1.0g/t Au cut-off below 390m depth.

³ Northern Star Regional Projects: Cut-off grades vary by deposit (typically 0.5g/t Au for open pit and 1.0g/t Au for underground).

⁴ All resources are classified in accordance with the JORC Code, 2012. All tonnes are dry metric tonnes. Figures may not compute due to rounding.