

## Major New Phase of Exploration Underway at Nuckulla Hill

---

### ■ **Regional Magnetic Survey**

- Auravelle has commenced a detailed aerial magnetic survey covering the entire 40km strike extent of the highly prospective Yarlbrinda Shear Zone within the Nuckulla Hill Project
- The Yarlbrinda Shear hosts Barton Gold's (ASX: BGD) neighbouring 1.6Moz Tunkillia Gold Project<sup>1</sup> as well as AUV's high-priority Sheoak gold prospect, which recently returned 28m @ 3.4g/t Au in RC drilling (see ASX: 9/1/26)
- The 9,400-line km survey will be undertaken on 25m line-spacing, with selected areas on 50m spacing, yielding significantly more detail than the current 200m spaced data
- The detailed magnetic data will assist in defining new target areas and refining existing targets, building on AUV's recent structural targeting review (see ASX: 25/2/26) and soil sampling results (see ASX: 9/2/26)

### ■ **Metallurgical Testwork**

- Auravelle will also commence preliminary gold recovery testwork on key mineralised intervals within the Sheoak prospect using bottle roll leaching analysis

### ■ **Televiewer Survey**

- A down-hole televiewer survey has been completed at Sheoak to identify key structural controls within the mineralised system to help with future drill-hole planning

### ■ **Drilling**

- In-fill and extensional RC drilling at Sheoak is on track to commence in the coming weeks
- 

### **Auravelle Managing Director Andrew Muir commented:**

*"Work is rapidly advancing at Nuckulla Hill on multiple fronts. A detailed magnetic survey is currently underway aimed at identifying and refining targets for new gold discoveries along the entire 40km strike extent of the highly fertile Yarlbrinda Shear Zone that sits within Auravelle's tenements.*

*"At Sheoak, we continue to improve our knowledge of the gold mineralisation. Down-hole televiewer surveys have been completed on a number of existing RC holes to give insights into mineralisation controls that cannot be gathered from the RC drill chips.*

*"In addition, preliminary metallurgical test work is underway to provide a vital early-stage assessment of the recovery characteristics of the gold mineralisation to guide potential future development studies.*

<sup>1</sup> See <https://bartongold.com.au/projects/jorc-mineral-resources/>

“Sheoak sits within a zone of gold anomalism that has so far been defined over a strike extent of more than 600m. The next phase of RC drilling scheduled to commence in the coming weeks is designed to in-fill and extend this gold mineralisation both along strike and at depth.”

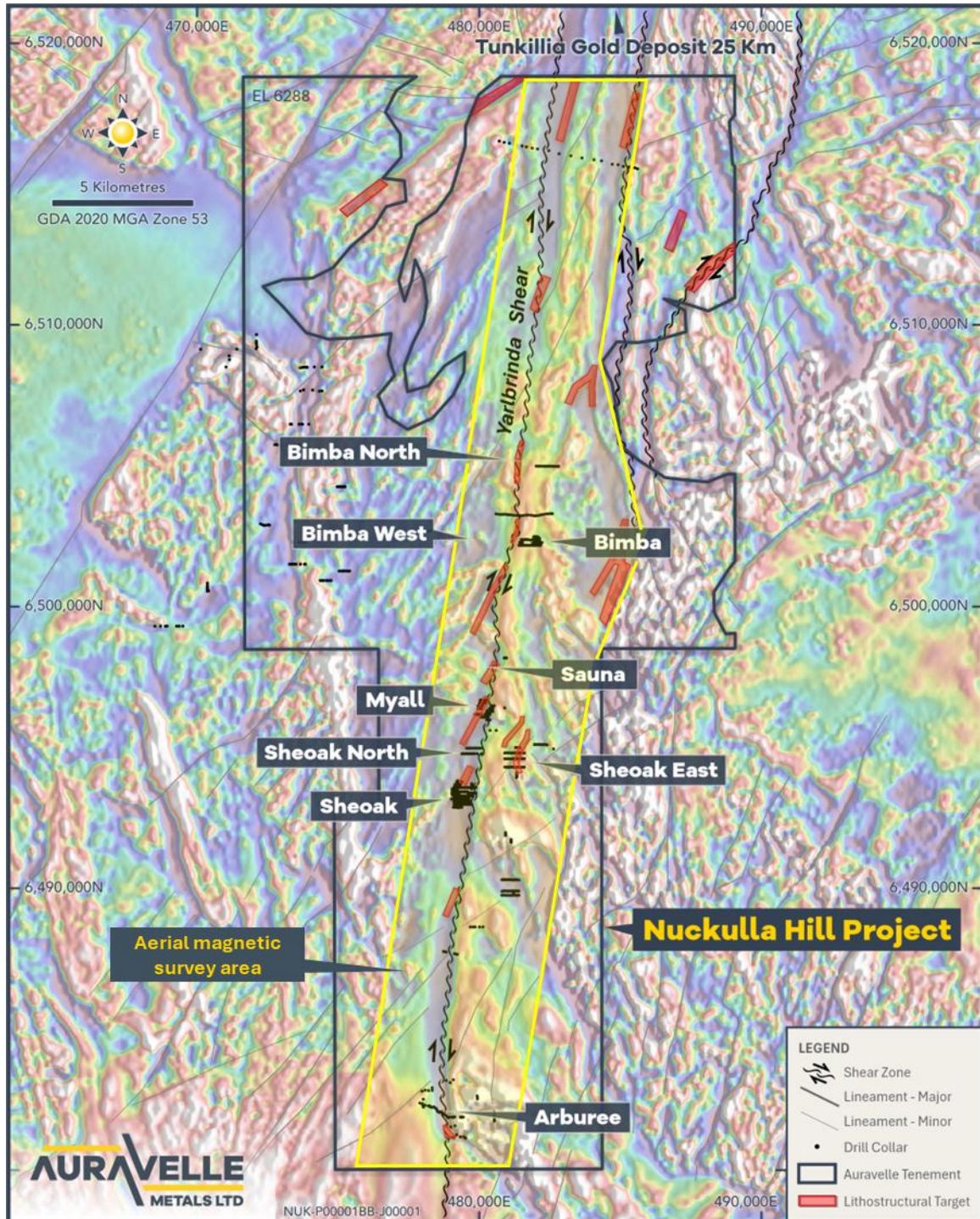


Figure 1: Nuckulla Hill Project showing the Aerial Magnetic Survey Area



**Figure 2: Down-hole Televiewer Vehicle on Site at Sheoak**

## Looking Forward

The Company continues its aggressive program of groundwork and exploration activity, with significant ongoing news flow and activities across its key gold projects, including:

- In-fill and extensional RC drilling at Sheoak and other prospects at Nuckulla Hill
  - **Commencing late Q1/early Q2**
- Discovery focused air-core drilling at Nuckulla Hill
  - **Commencing mid Q2**
- Additional work planned over coming months includes, but is not limited to:
  - **Further follow-up RC drilling at Nuckulla Hill post completion of the pending RC and air-core programs**
  - **Site visit and maiden Auravelle sampling at the Skye Gold Project in South Australia**
  - **Soil sampling at the Crown Gold Project in Western Australia**
  - **Additional heritage surveys in South Australia**

This announcement has been authorised for release by the Board of Auravelle Metals Limited.

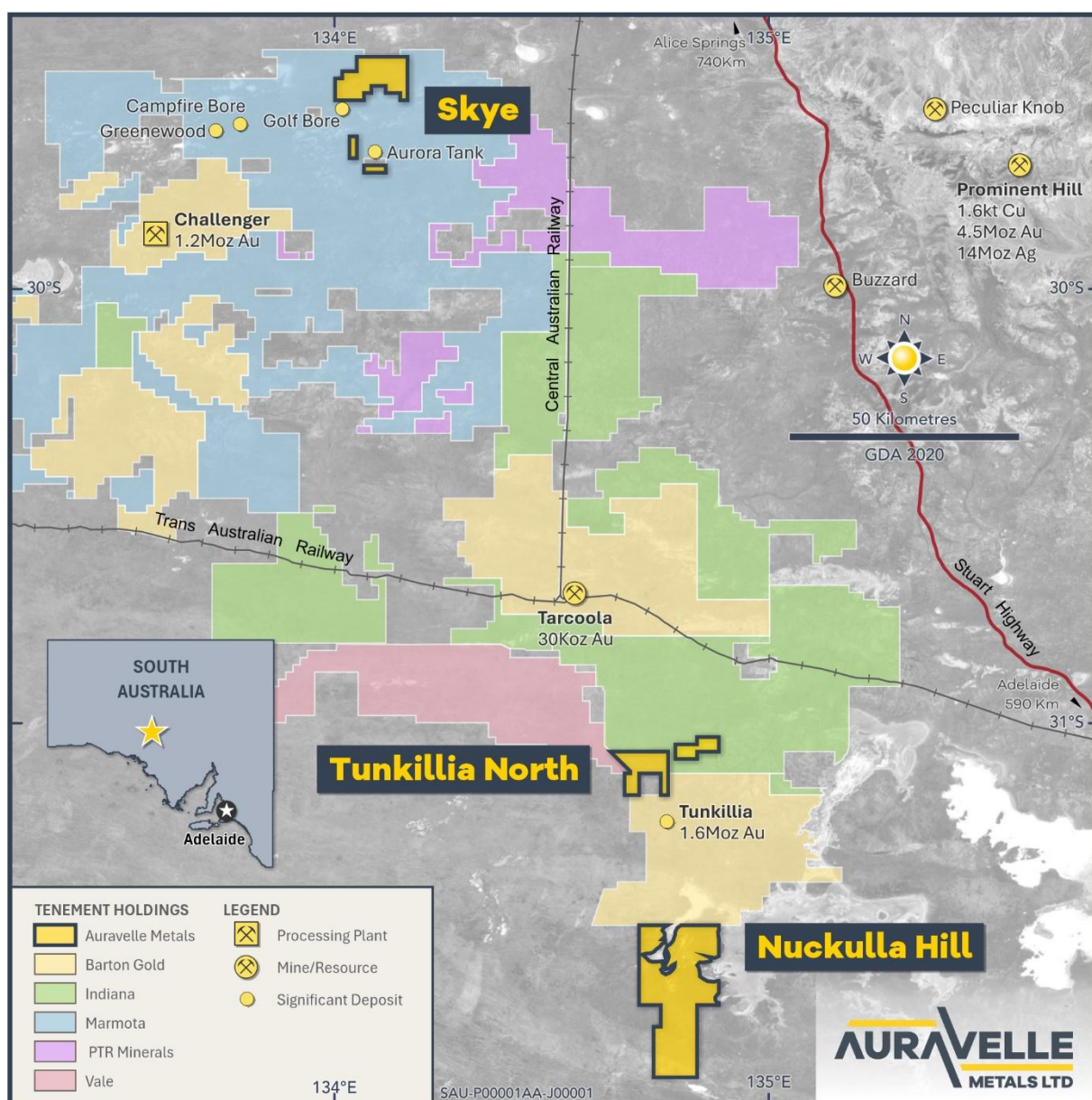
**More Information:**

Investors/Corporate:  
 Andrew Muir, Managing Director  
 Auravelle Metals Limited  
 +61 (0) 8 9388 1551

[reception@auravelle.com.au](mailto:reception@auravelle.com.au)

Media:  
 Nicholas Read  
 Read Corporate  
 +61 (0) 8 9388 1474

[info@readcorporate.com.au](mailto:info@readcorporate.com.au)



**Figure 3: Auravelle’s South Australian Projects<sup>2</sup>**

<sup>2</sup> For Tarkoola current resources see <https://bartongold.com.au/projects/jorc-mineral-resources/>  
 For Challenger historical production see <https://bartongold.com.au/projects/challenger-gold-cgm/>  
 For Tunkillia resource see <https://bartongold.com.au/projects/jorc-mineral-resources/>  
 For Prominent Hill Resource, see <https://minedocs.com/23/OZMineralz-MRMR-6302022.pdf>, OZ Minerals Prominent Hill Minerals 2022 Minerals Resource Statement as at 30 June 2022

### **Competent Person Statement**

The information in this report that relates to Exploration Results is based on, and fairly represents, information and supporting documentation compiled by Ms Anna Price, a Member of the Australian Institute of Geoscientists. Ms Anna Price is a full-time employee of Auravelle Metals Limited who holds shares and options in the Company and has sufficient experience relevant to the styles of mineralisation and types of deposit under consideration and to the activities being undertaken to qualify as a Competent Person as defined in the 2012 Edition of the 'Australasian Code for Reporting of Exploration Results, Mineral Resources and Ore Reserves'. Ms Price consents to the inclusion in this report of the matters based on her information in the form and context in which they appear.

Auravelle confirms that it is not aware of any new information or data that materially affects the information included in the original market announcement. The Company confirms that the form and context in which the Competent Person's findings are presented have not been materially modified from the original market announcements.

### **About Auravelle**

Auravelle Metals Limited (ASX: AUV) is an Australian-based exploration company focused on driving value from its recent high-grade gold discoveries at Nuckulla Hill in the Gawler Craton in SA, and the Crown Project, located near Kalgoorlie in Western Australia.