

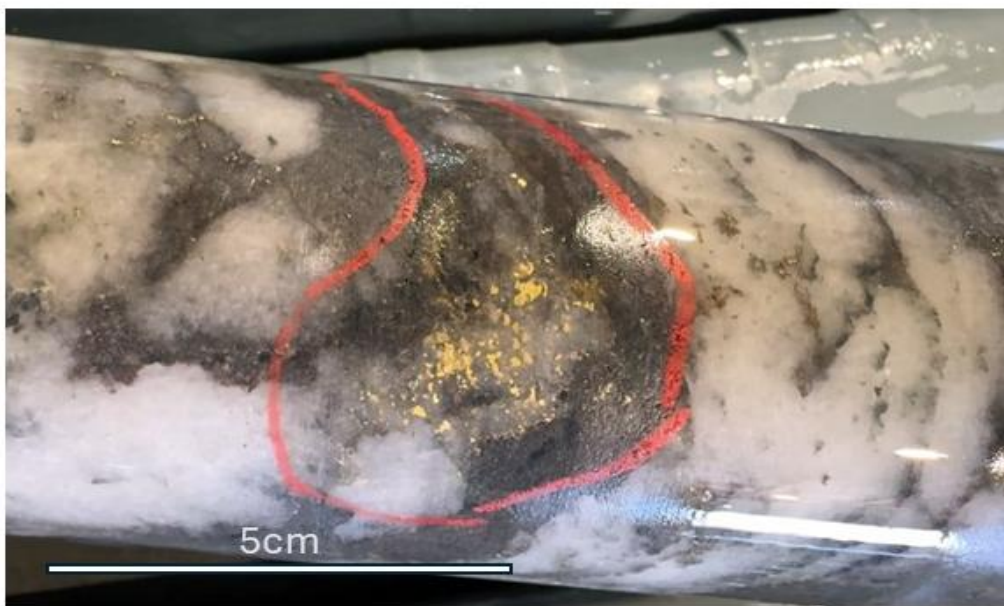
High-grade drilling results continue to support growing production outlook

The strong results point to increasing grades in line with guidance¹. Grade control drilling substantially ahead of production. Exploration to recommence in FY26

Results from grade control drilling in line with FY26 production forecasts

- Recent high-grade drilling results continue to reinforce the Company's outlook for increasing grades through FY26 and FY27. Strong grade control results including 3.2m at 137.8 g/t gold, 4.9m at 24.9 g/t gold and 7.3m at 21.4 g/t gold continue to provide confidence in the mine plan and support expectations for increased production and margins as the operation advances into higher-grade zones through FY26 and FY27.

Figure 1: Recent drill core from drill hole DDUG3564, just ahead of the production front at Viago Mining areas. Refer to Table 1 for a visual estimate of mineral abundance.



Visual estimates of mineral abundance should never be considered a proxy or substitute for laboratory analyses where concentrations or grades are the factor of principal economic interest. Visual estimates also potentially provide no information regarding impurities or deleterious physical properties relevant to valuations. The Company expects to receive the laboratory analytical results of this recent core sample from DDUG3564 in the December 2025 quarter.

- As previously guided,² operations are now well set up for increasing production through FY26 as the mining sequence progressively moves to higher-grade stoping areas in the Deacon, Viago and (later in the year) Deacon North mining areas. Bellevue remains well positioned to deliver FY26 production guidance of 130–150koz.
- September 2025 quarter operational performance accompanied by increased underground drilling has allowed grade control activities to advance rapidly with coverage now ~9 months ahead of the

¹ Refer to the Company's ASX announcement dated 1 August 2025 titled "FY26 guidance and annual Resource & Reserve statement".

² Refer to the Company's ASX announcement dated 7 October 2025 titled "Strong development quarter builds platform for growth".



ASX Announcement

13 October 2025

production fronts across all mining areas. Development advance continues ahead of plan, providing the drill platforms to continue to target grade control coverage 12-18 months ahead of production by the end of FY26, further de-risking the mine schedule.

- With Deacon now fully operational and recent grade control results (Figure 3) supporting expectations, production is now established in Viago with stoping to commence in the December 2025 quarter and 3 drill rigs are further advancing grade control coverage in this high-grade mining area (Figure 4).
- All major mining areas are now in production at the Bellevue Gold Mine with the exception of Deacon North. Underground development continues to advance into the Deacon North mining area with decline development well advanced and first stoped ore expected in late FY26.
- Further grade control drilling is scheduled at Deacon North commencing in October 2025. Deacon North is a significant high-grade mining area that contributes a substantial increase in ounces per vertical metre. Previously released results³ include 2.7m @ 113.2 g/t gold and 5.6m @ 62.7 g/t gold.

Exploration drilling planned

- Strong progress on grade control drilling will allow the underground drill rigs to be opportunistically deployed for Resource conversion and Resource growth drilling later in FY26.
- A surface diamond rig is scheduled for the December 2025 quarter for an 8,000 metre program to test near mine drill targets including the major corridor east of the Bellevue mine.

³ Refer to the Company's ASX announcement dated 23 June 2021 titled "Drilling Results Underpin a Proposed Upscaled Operation".



Bellevue Gold Limited (**Bellevue or Company**) (ASX: BGL) is pleased to provide the latest grade control drilling results which support the Company's FY26 production guidance.

Grade control drilling update

Advancement of the underground mine development during the September 2025 quarter enabled the establishment of new drill platforms, allowing grade-control drilling to progress well ahead of mining fronts. Grade control is now up to nine months ahead of production in most mining areas, with five underground rigs currently operating. The Company is targeting being 12–18 months ahead of production by the end of FY26, providing the best platform to support mine planning and design.

Reconciliation between production and grade-control drilling remains strong with the September 2025 quarter reconciled numbers continuing to be in line with expectations and the long-term trend. The remaining FY26 mining schedule is now effectively drilled out, with only minor areas within Deacon North and Viago requiring additional definition drilling.

Recent results underpin the guided increase in mining grade during the remainder of FY26 as mining moves from more development intensive production to stope production.

New high-grade results across all mining areas include:

Deacon mining area

- | | | |
|-------------------------|------------------------|-------------------------|
| ○ 3.2m @ 137.8 g/t gold | ○ 3.4m @ 46.8 g/t gold | ○ 7.3m @ 21.4 g/t gold |
| ○ 4.9m @ 24.9 g/t gold | ○ 6.4m @ 17.3 g/t gold | ○ 0.7m @ 132.8 g/t gold |
| ○ 2.8m @ 31.0 g/t gold | ○ 2.2m @ 37.4 g/t gold | ○ 6.6m @ 11.8 g/t gold |

Marceline mining area

- | | | |
|-------------------------|------------------------|------------------------|
| ○ 1.6m @ 116.4 g/t gold | ○ 1.9m @ 91.6 g/t gold | ○ 4.6m @ 30.2 g/t gold |
| ○ 0.6m @ 212.3 g/t gold | ○ 4.8m @ 22.0 g/t gold | ○ 1.1m @ 90.9 g/t gold |
| ○ 2.6m @ 28.1 g/t gold | ○ 3.6m @ 16.8 g/t gold | ○ 2.8m @ 21.1 g/t gold |

Viago mining area

- | | | |
|------------------------|------------------------|------------------------|
| ○ 3.5m @ 28.9 g/t gold | ○ 5.5m @ 16.5 g/t gold | ○ 1.6m @ 56.4 g/t gold |
| ○ 4.5m @ 18.6 g/t gold | ○ 1.7m @ 33.3 g/t gold | ○ 6.0m @ 8.9 g/t gold |
| ○ 0.9m @ 51.2 g/t gold | ○ 3.4m @ 13.4 g/t gold | ○ 2.6m @ 16.9 g/t gold |

Tribune mining area

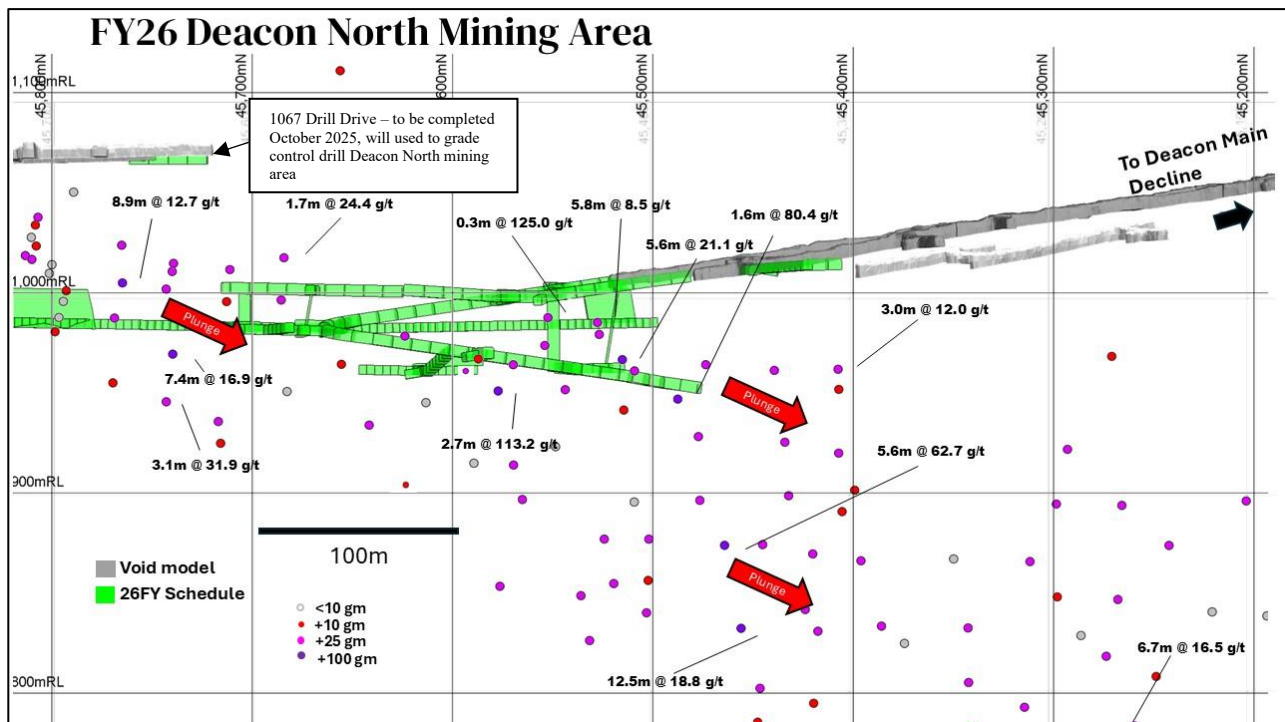
- | | | |
|------------------------|-------------------------|------------------------|
| ○ 9.9m @ 24.2 g/t gold | ○ 9.1m @ 14.2 g/t gold | ○ 9.1m @ 13.0 g/t gold |
| ○ 8.2m @ 13.0 g/t gold | ○ 0.3m @ 327.0 g/t gold | ○ 7.8m @ 11.0 g/t gold |
| ○ 4.3m @ 14.5 g/t gold | ○ 5.8m @ 9.8 g/t gold | ○ 8.4m @ 6.7 g/t gold |

Deacon North is scheduled to deliver first ore in late FY26 and represents the largest high-grade mining area within the Bellevue Gold Project. The area is a northern continuation of the Deacon Main orebody and will be a major contributor to production over the next five years.

The high-grade nature of Deacon North is supported by multiple previously reported⁴ intersections including:

- 5.6m @ 62.7 g/t gold ○ 5.6m @ 21.1 g/t gold ○ 3.1m @ 31.9 g/t gold
- 2.7m @ 113.2 g/t gold ○ 6.7m @ 16.5 g/t gold ○ 1.6m @ 80.4 g/t gold

Figure 2: Deacon North FY26 mining areas, showing previously released grade control results. The FY26 schedule is shown in green, with previously mined voids in grey.³ 1067 Drill Drive (shown below) nearing completion, will be used to grade control drill the Deacon North mining area commencing in December 2025 quarter.



Figures 3 to 6 show planned production for FY26 with grade control drilling results.

⁴ Refer to the Company's ASX announcements dated 5 August 2019, 17 December 2019, 24 February 2020, 27 May 2020, 1 October 2020, 18 February 2021, 16 March 2021, 15 April 2021, 23 June 2021, 21 September 2021, 15 February 2022, 5 April 2022, 4 May 2022 and 25 July 2024.



Figure 3: Deacon Main FY26 mining areas, showing previously released grade control results (black) and new grade control results (red).⁵ The FY26 schedule is shown in green, with previously mined voids in grey.

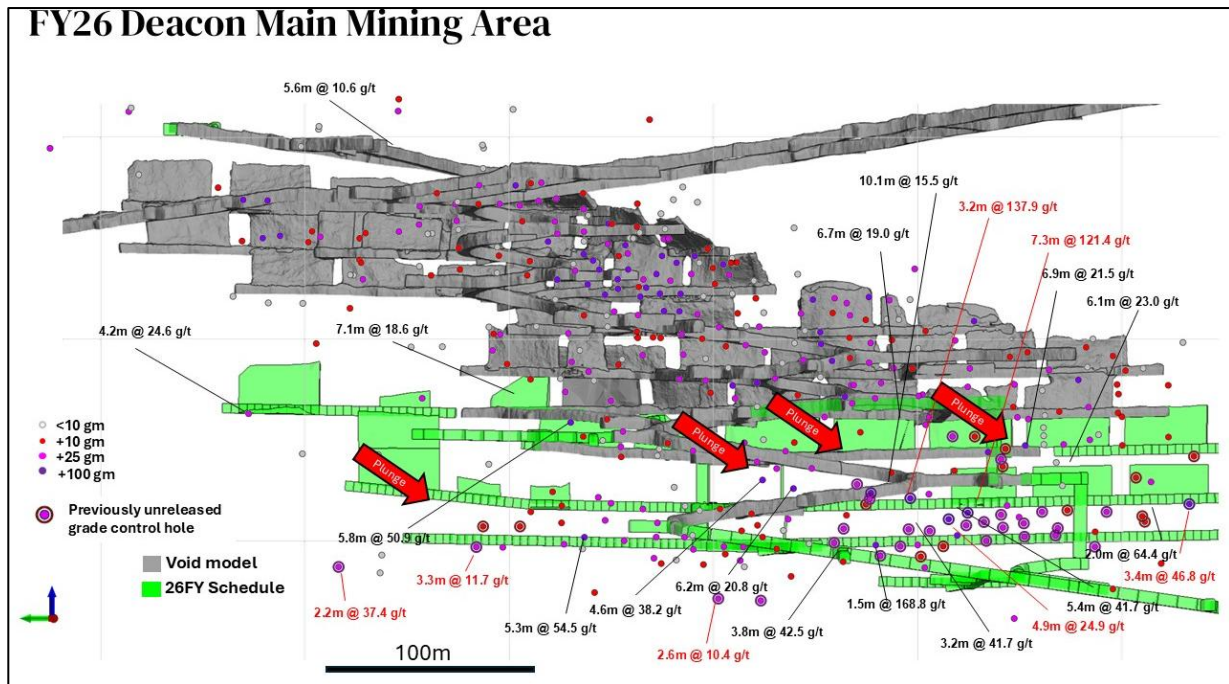
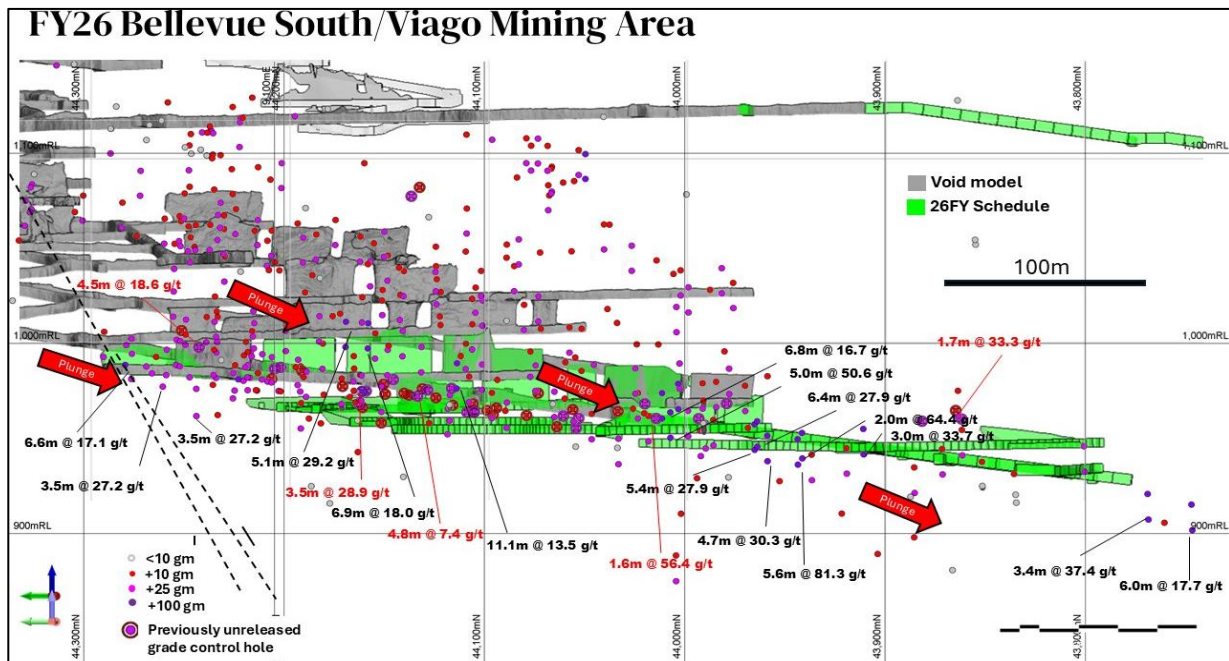


Figure 4: Bellevue South FY26 mining areas showing previously released grade control results (black) and new grade control results (red).⁶ The FY26 schedule is shown in green, with previously mined voids in grey.



⁵ For previously released drill results refer to the Company's ASX announcements dated 19 November 2019, 17 December 2019, 24 February 2020, 7 July 2020, 12 September 2023, 19 March 2024, 15 July 2024 and 28 July 2025.

⁶ For previously released drill results refer to the Company's ASX announcements dated 7 February 2018, 26 September 2018, 9 October 2018, 21 May 2019, 11 July 2019, 5 August 2019, 19 November 2019, 18 February 2020, 27 May 2020, 1 May 2023, 15 July 2024 and 28 July 2025.



Figure 5: Tribune FY26 mining areas showing previously released drill results (black) and new grade control results in red.⁷ The FY26 schedule is shown in green, with previously mined voids in grey.

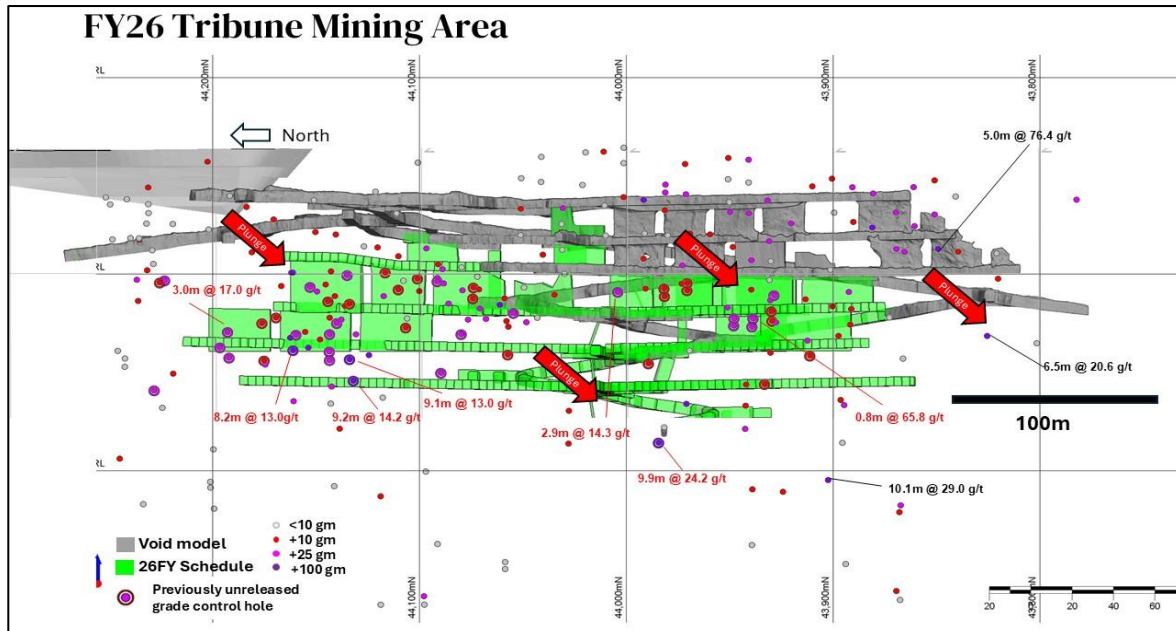
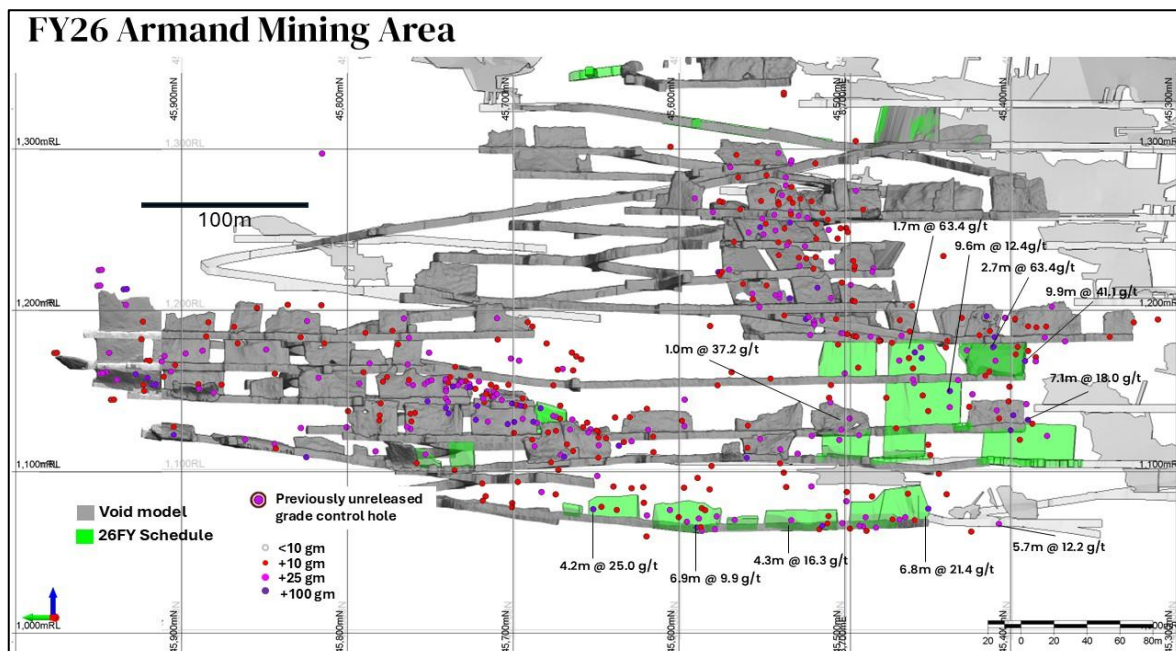


Figure 6: Armand FY26 mining areas showing previously released grade control results (black) and new grade control results (red).⁸ The FY26 schedule is shown in green, with previously mined voids in grey.



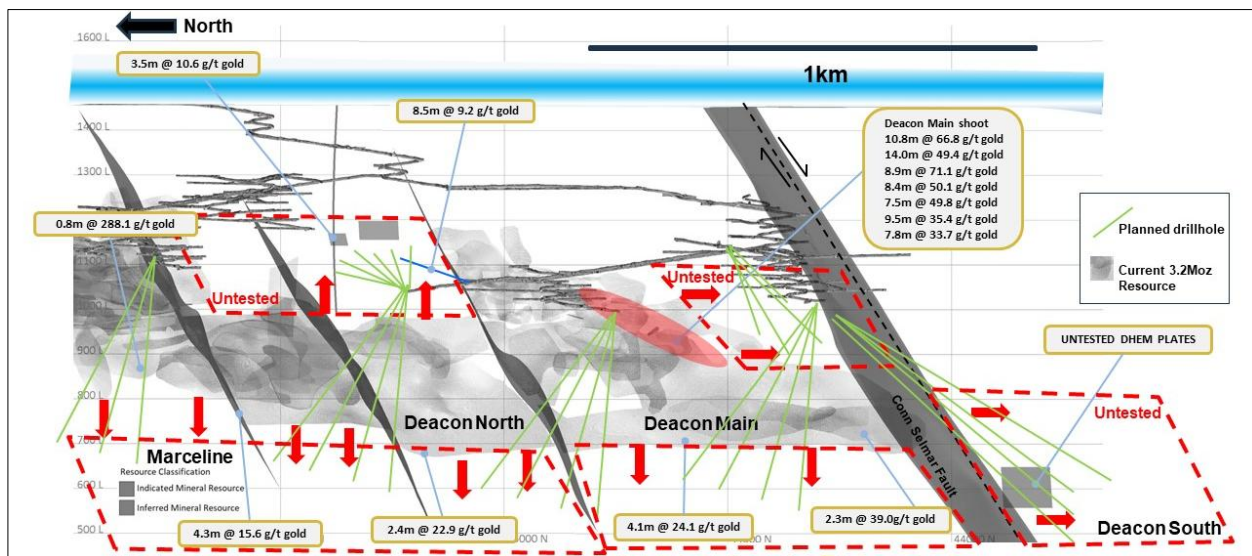
⁷ For previously released drill results refer to the Company's ASX announcements dated 11 December 2017, 28 August 2018, 19 November 2019, 18 February 2020, 16 June 2021, 3 August 2021 and 14 October 2021.

⁸ For previously released drill results refer to ASX announcements dated 10 December 2018, 8 October 2020, 11 November 2020, 18 February 2021, 23 June 2021, 3 August 2021, 15 February 2022, 24 November 2022, 1 May 2023, 3 August 2023, 15 July 2024 and 28 July 2025.

Planned exploration drilling from 2026 onwards

Exploration upside has always been strong at the Bellevue Gold Project, however exploration drilling has been very limited during the mine construction and ramp up of the mine since FY22. With the mine now mostly ramped up and grade control well advanced, Bellevue will be in a position to recommence evaluating exploration and resource development drilling from the underground drilling platforms later in FY26 and in FY27. An example of the step out targets which are now available from existing underground development is shown in Figure 7 below.

Figure 7: Deacon long section looking east showing current underground position and opportunities for Resource growth from extensions to existing Resource areas. Schematic planned drillholes from existing underground access are shown in green.⁹



For further information regarding Bellevue Gold Limited please visit the ASX platform (ASX: BGL) or the Company's website www.bellevuegold.com.au.

Authorised by the Board of Directors.

For enquiries please contact:

Darren Stralow
Managing Director &
Chief Executive Officer
T: +61 8 6373 9000
E: admin@bgl.gold

Duncan Hughes
Chief Corporate
Development Officer
T: +61 8 6373 9000
E: admin@bgl.gold

Paul Armstrong
Media enquiries - Read Corporate
T: +61 8 9388 1474
E: paul@readcorporate.com.au

⁹ Refer to the Company's ASX announcements dated 17 December 2019, 23 June 2021, 15 February 2022, 19 March 2024, 15 July 2024 and 25 July 2024.

End notes, Competent Persons' Statements and JORC Compliance Statements

For full details of previously announced exploration results in this announcement, refer to the ASX announcement that is referenced against the relevant exploration results. The Company confirms that it is not aware of any new information or data that materially affects the information included in the original ASX announcements.

Information in this announcement that relates to new exploration results at the Bellevue Gold Project is based on and fairly represents information and supporting documentation compiled by Mr Sam Brooks. Mr Brooks is a full-time employee of Bellevue Gold Limited and a competent person for the reporting of exploration results. Mr Brooks holds securities in Bellevue Gold Limited. Mr Brooks is a Member of the Australian Institute of Geoscientists. Mr Brooks has sufficient experience which is relevant to the style of mineralisation and type of deposit under consideration and to the activity being undertaken to qualify as a Competent Person as defined in the 2012 Edition of the Australasian Code for Reporting of Exploration Results, Mineral Resources and Ore Reserves. Mr Brooks has reviewed this announcement and consents to the inclusion in this announcement of all technical statements based on his information in the form and context in which they appear.

Information in this announcement that relates to Ore Reserve estimates has been extracted from the Company's ASX announcement dated 1 August 2025 titled "FY26 guidance and annual Resource & Reserve statement". Information in this announcement that relates to Mineral Resource estimate has been extracted from the Company's ASX announcement dated 1 August 2025 titled "FY26 guidance and annual Resource & Reserve statement". The Company confirms that it is not aware of any new information or data that materially affects the information included in the original ASX announcement, and in the case of estimates of Mineral Resources and Ore Reserves, that all material assumptions and technical parameters underpinning the estimates in the original ASX announcement continue to apply and have not materially changed.

Disclaimer

This announcement has been prepared by the Company based on information from its own and third party sources available at the date of this announcement and is not a disclosure document. No party other than the Company has authorised or caused the issue, lodgement, submission, despatch or provision of this announcement, or takes any responsibility for, or makes or purports to make any statements, representations or undertakings in this announcement. Except for any liability that cannot be excluded by law, the Company and its related bodies corporate, directors, employees, servants, advisers and agents disclaim and accept no responsibility or liability for any expenses, losses, damages or costs incurred by any recipient or reader of this announcement relating in any way to this announcement including, without limitation, the information contained in or provided in connection with it, any errors or omissions from it however caused, lack of accuracy, completeness, currency or reliability or a recipient of this announcement or any other person placing any reliance on this announcement, its accuracy, completeness, currency or reliability. Information in this announcement which is attributed to a third-party source has not been checked or verified by the Company.

Summary information

This announcement contains summary information about the Company and its subsidiaries (together, the **Bellevue Group**) and the activities of the Bellevue Group, which is current as at the date of this announcement, unless otherwise indicated. This announcement does not purport to contain all the information that a prospective investor may require in connection with any potential investment in the



Company. It should be read in conjunction with, and full review made of, the Company's disclosures and releases lodged with the Australian Securities Exchange (ASX) and available at www.asx.com.au. Each recipient must make its own independent assessment of the Company before acquiring any shares in the Company.

All dollar values are in Australian dollars (A\$ or AUD) unless otherwise stated.

Forward-looking information

This announcement contains forward-looking statements. Wherever possible, words such as "intends", "expects", "scheduled", "estimates", "anticipates", "believes", and similar expressions or statements that certain actions, events or results "may", "could", "would", "might" or "will" be taken, occur or be achieved, have been used to identify these forward-looking statements, but not always. Although the forward-looking statements contained in this announcement reflect management's current beliefs based upon information currently available to management and based upon what management believes to be reasonable assumptions, the Company cannot be certain that actual results will be consistent with these forward-looking statements. A number of factors could cause events and achievements to differ materially from the results expressed or implied in the forward-looking statements. These factors should be considered carefully and prospective investors should not place undue reliance on the forward-looking statements. Forward-looking statements necessarily involve significant known and unknown risks, assumptions and uncertainties that may cause the Company's actual results, events, prospects and opportunities to differ materially from those expressed or implied by such forward-looking statements. Although the Company has attempted to identify important risks and factors that could cause actual actions, events or results to differ materially from those described in forward-looking statements, there may be other factors and risks that cause actions, events or results not to be anticipated, estimated or intended, including those risks discussed in the Company's ASX announcements (including in Appendix B titled 'Key Risks' of the investor presentation released to the ASX on 14 April 2025) and other public filings. There can be no assurance that the forward-looking statements will prove to be accurate, as actual results and future events could differ materially from those anticipated in such statements. Accordingly, prospective investors should not place undue reliance on forward-looking statements.

Any forward-looking statements are made as of the date of this announcement, and the Company assumes no obligation to update or revise them to reflect new events or circumstances, unless otherwise required by law. This announcement may contain certain forward-looking statements and projections regarding:

- estimated Mineral Resources and Ore Reserves;
- planned production and operating costs profiles, including life of mine plans and associated projections or targets in respect of production outlook;
- planned capital requirements; and
- planned strategies and corporate objectives.

Such forward-looking statements/projections are estimates for illustrative purposes only and should not be relied upon. They are not guarantees of future performance and involve known and unknown risks, uncertainties and other factors, many of which are beyond the control of the Company. The forward-looking statements/projections are inherently uncertain and may therefore differ materially from results ultimately achieved. The Company does not make any representations and provides no warranties concerning the accuracy of the projections and disclaims any obligation to update or revise any forward-

looking statements/projections based on new information, future events or otherwise except to the extent required by applicable laws.



ASX Announcement
13 October 2025

BELLEVUE
GOLD

Table 1: Visual mineralisation from DDUG3454 relating to core photo Figure 1. Refer to Table 2 for drill location details.

HOLE ID	FROM (M)	TO (M)	LENGTH (M)	DESCRIPTION	MINERAL OCCURRENCE	VISUAL ESTIMATED SULPHIDE	DESCRIPTION
DDUG3454	193.52	199.48	1	Pillow basalt			
	199.48	203.65	1	Intermediate porphyry			
	203.65	204.66	1	Quartz vein/ Viago Lode	Visible gold mineralisation,	<5% pyrrhotite, <5% chalcopyrite	Opaque quartz lode position, with biotite amphibole alteration and minor sulphide composition, multiple flecks of visible gold logged
	204.66	208.18	1	Intermediate porphyry			
	208.18	216	1	Basalt			

Table 2: Reported drill results (Mine Grid).

Hole	East	North	RI	Azi	Dip	From (m)	To (m)	Interval	Au	Gram Metres	Mine Area
DDUG2062	9298	44833	1006	50	-7	70.6	72.4	1.8	2.6	4.6	Deacon Main
DDUG2066	9297	44834	1005	40	-32	86.6	87.1	0.5	18.7	9.3	Deacon Main
DDUG2109						144.8	147.4	2.6	10.4	27.1	Deacon Main
DDUG2112	9209	44803	1007	122	-65	150.5	151.9	1.3	20.6	27.8	Deacon Main
DDUG2114						50.3	51.7	1.4	4	5.5	Marceline
DDUG2114						53.4	56.2	2.9	1.9	5.4	Marceline
DDUG2115	9089	45963	1137	51	-13	2.8	4.1	1.3	11.1	14.7	Marceline
DDUG2115						48.7	50	1.3	13.5	17.6	Marceline
DDUG2115						108.6	111	2.5	9.3	22.7	Marceline
DDUG2115						117.6	118.3	0.7	10.7	6.9	Marceline
DDUG2116	9089	45963	1137	64	-7	53	54.3	1.3	5.8	7.7	Marceline
DDUG2116						111.8	114	2.2	2.7	6	Marceline
DDUG2117	9090	45963	1136	61	-23	45.4	46.2	0.8	7.5	5.6	Marceline
DDUG2117						107.5	108.9	1.4	11.8	16.5	Marceline
DDUG2117						124.2	124.5	0.3	18.7	5.6	Marceline
DDUG2117						131.6	132.2	0.6	11.9	7.5	Marceline
DDUG2118	9090	45963	1137	65	-3	2.1	3.5	1.5	6.2	9.2	Marceline
DDUG2118						99	100	1	9.8	9.8	Marceline
DDUG2118						102.3	106.2	4	2.5	9.8	Marceline
DDUG2118						111.9	113.3	1.4	10	14	Marceline
DDUG2119	9090	45963	1136	67	-12	57.3	57.9	0.6	29.2	16	Marceline
DDUG2119						108.4	112	3.6	16.8	60.6	Marceline
DDUG2120						86.6	89.5	3	7.9	23.5	Marceline
DDUG2120						103.9	106.6	2.7	4.7	12.7	Marceline
DDUG2121						91.7	94	2.3	3.6	8.2	Marceline



ASX Announcement
13 October 2025

BELLEVUE
GOLD

Hole	East	North	RL	Azi	Dip	From (m)	To (m)	Interval	Au	Gram Metres	Mine Area
DDUG2121						119.3	119.9	0.6	10.6	6.3	Marceline
DDUG2122						85.8	88.7	2.8	2.7	7.5	Marceline
DDUG2122						119.5	123.5	4	3	12.1	Marceline
DDUG2123						50.2	52.4	2.3	9.3	21	Marceline
DDUG2123						88.3	88.6	0.3	26.9	8.1	Marceline
DDUG2124	9090	45962	1136	52	-21	91	94.3	3.3	1.9	6.3	Marceline
DDUG2124						104.4	106.2	1.9	10.3	19	Marceline
DDUG2124						198.5	199.2	0.7	41.1	27.6	Marceline
DDUG2125						107	107.5	0.5	12.1	6.3	Marceline
DDUG2126						67.6	68.8	1.2	8	9.6	Marceline
DDUG2127						58	63	5	2.3	11.3	Marceline
DDUG2128	9121	45900	1120	108	3	51.9	58.5	6.6	4	26.3	Marceline
DDUG2129	9121	45901	1120	90	6	48.6	50.5	1.9	6.1	11.5	Marceline
DDUG2130	9121	45901	1120	66	12	49.9	52	2.1	7.8	16.5	Marceline
DDUG2131	9121	45901	1120	93	0	38	41.7	3.7	1.7	6	Marceline
DDUG2132						49.1	49.9	0.8	6.6	5.2	Marceline
DDUG2134						29.8	31.9	2.1	11.5	24.1	Marceline
DDUG2136	9120	45899	1119	129	-19	42.3	45.4	3.1	1.7	5.3	Marceline
DDUG2137	9121	45900	1119	105	-25	24.2	25.3	1.2	25.8	29.6	Marceline
DDUG2139	9210	44804	1007	83	-48	133.6	134.2	0.7	12.2	8.1	Deacon Main
DDUG2237						112.5	114.6	2.1	7.3	14.9	Deacon Main
DDUG2240	9296	44834	1005	2	-52	123	124.6	1.6	7.6	12.3	Deacon Main
DDUG2241						115.3	118	2.8	2.8	7.6	Deacon Main
DDUG2243	9053	45953	1228	66	-11	155.9	159.2	3.3	4.1	13.5	Marceline
DDUG2244	9054	45953	1228	67	-7	21	21.9	0.9	11.6	10.4	Marceline
DDUG2246						157.4	158.5	1.1	10.4	11.2	Marceline
DDUG2246						199.1	200.7	1.6	116.4	189.8	Marceline
DDUG2247	9053	45953	1228	58	-17	156.2	158	1.8	9.6	17.5	Marceline
DDUG2249	9053	45953	1228	53	-6	172.8	173.3	0.5	10.7	5.4	Marceline
DDUG2250	9053	45954	1228	52	-13	162.7	164.5	1.8	7.5	13.4	Marceline
DDUG2251	9053	45954	1228	51	-17	160.4	162.3	1.8	2.7	5.1	Marceline
DDUG2324						76.9	77.5	0.6	25.7	15.4	Viago
DDUG2389						212.6	214.6	2	7.4	15	Viago
DDUG2401						209.2	210.1	0.9	6.1	5.2	Viago
DDUG2406						191.7	195.1	3.4	13.4	44.9	Viago
DDUG2412						437.3	439.8	2.5	17.2	42.8	Marceline
DDUG2412						444.4	446	1.6	3.3	5.4	Marceline
DDUG2412						454	458.7	4.7	4.6	21.6	Marceline



ASX Announcement
13 October 2025

BELLEVUE
GOLD

Hole	East	North	RL	Azi	Dip	From (m)	To (m)	Interval	Au	Gram Metres	Mine Area
DDUG2412						538.9	542.1	3.2	5.7	18.4	Marceline
DDUG2413						439.6	440.7	1	11.6	12.2	Marceline
DDUG2413						457.4	458	0.6	11.4	6.9	Marceline
DDUG2413						520.7	521.5	0.8	8.3	6.6	Marceline
DDUG2477	9061	46024	1134	83	-16	47.8	49.6	1.8	5	8.8	Marceline
DDUG2477						98.5	99	0.5	17.5	8.7	Marceline
DDUG2477						189.9	191.7	1.8	5	9	Marceline
DDUG2478						47.4	48.6	1.2	19.1	22	Marceline
DDUG2478						97.6	98.4	0.9	6.5	5.5	Marceline
DDUG2479						187.7	188	0.3	33	9.9	Marceline
DDUG2738	9249	44938	1026	30	-70	147.4	149.6	2.2	37.4	80.7	Deacon Main
DDUG2743	9250	44922	1026	79	-69	132.7	133.6	0.9	7.8	7.2	Deacon Main
DDUG2745	9250	44921	1026	100	-72	123.6	123.9	0.3	27.5	8.2	Deacon Main
DDUG2745						134.6	137.8	3.3	11.7	38.1	Deacon Main
DDUG2810						79.9	86.4	6.4	17.3	111.1	Deacon Main
DDUG2810						89.6	93.8	4.1	1.6	6.5	Deacon Main
DDUG2884						96.4	98.7	2.3	19.6	44.5	Marceline
DDUG2884						105.5	106.8	1.2	18.3	22.5	Marceline
DDUG2884						108.8	111.6	2.8	8.9	25	Marceline
DDUG2884						121.7	123.6	1.8	26.1	48	Marceline
DDUG2885	9017	45978	1089	91	-12	115.3	118.4	3.1	14.8	45.3	Marceline
DDUG2885						128.2	128.7	0.4	27.3	11.7	Marceline
DDUG2885						137	139.3	2.2	3	6.8	Marceline
DDUG2885						187	192.4	5.4	3.8	20.5	Marceline
DDUG2886						121.2	121.6	0.4	13.5	5.4	Marceline
DDUG2886						135.1	140.3	5.3	8.6	45.3	Marceline
DDUG2886						195	196.8	1.8	2.9	5.3	Marceline
DDUG2886						205.7	209.2	3.5	8	28.4	Marceline
DDUG2914						186.6	187.4	0.8	12.5	10	Marceline
DDUG2915						61.6	61.9	0.3	28.4	8.5	Marceline
DDUG2916	9052	46056	1135	74	-45	78.7	79	0.3	19.3	5.8	Marceline
DDUG2916						91.2	91.8	0.6	20	12	Marceline
DDUG2916						116.3	117.3	1.1	5.5	5.8	Marceline
DDUG2918						85.6	85.9	0.3	36.5	11	Marceline
DDUG2918						120.5	121.6	1.1	5.4	5.7	Marceline
DDUG2930	9098	45829	1111	77	-24	22.8	24.1	1.4	34.5	47.3	Marceline
DDUG2934						91.6	94.3	2.7	3.1	8.4	Marceline
DDUG2934						116.6	116.9	0.3	29.4	9.1	Marceline



ASX Announcement
13 October 2025

BELLEVUE
GOLD

Hole	East	North	RL	Azi	Dip	From (m)	To (m)	Interval	Au	Gram Metres	Mine Area
DDUG2934						120.4	120.7	0.3	22.4	6.7	Marceline
DDUG2935						111.4	112.3	0.9	10.6	9.9	Marceline
DDUG2935						125	127.4	2.3	3.6	8.4	Marceline
DDUG2936						56.9	58.1	1.2	37.3	44	Marceline
DDUG2936						85.9	87.5	1.6	3.3	5.4	Marceline
DDUG2936						123	125.5	2.5	6.7	16.7	Marceline
DDUG2936						133.5	136.2	2.8	4.2	11.7	Marceline
DDUG2939						84.7	85.5	0.8	30.5	24.7	Marceline
DDUG2939						92.2	92.7	0.5	19.6	9.6	Marceline
DDUG2939						125.9	126.7	0.8	15.4	11.8	Marceline
DDUG2939						132.1	132.5	0.4	22.9	8.5	Marceline
DDUG2940						86.6	87.8	1.2	8.1	9.8	Marceline
DDUG2940						138.9	141.6	2.7	7.6	20.7	Marceline
DDUG2941						119.8	122.5	2.6	28.1	74.2	Marceline
DDUG2941						125.4	126.3	0.9	30.1	27.1	Marceline
DDUG2942	9098	45827	1110	106	-36	79.6	80	0.3	48.9	16.6	Marceline
DDUG2942						131.5	134.2	2.7	13.9	37.4	Marceline
DDUG2942						145.4	148.7	3.3	10.9	36.1	Marceline
DDUG3002	9274	44613	991	103	-19	103.2	104.4	1.2	7	8.4	Deacon Main
DDUG3008	9287	44663	990	73	-30	72.9	79	6.1	5.2	31.7	Deacon Main
DDUG3009	9287	44662	990	94	-27	74.6	79	4.5	11.7	52.3	Deacon Main
DDUG3009						94	97.6	3.6	3.4	12.1	Deacon Main
DDUG3019	9017	45980	1089	47	-12	81	84	3	2.2	6.6	Marceline
DDUG3019						112.9	113.2	0.3	35.9	10.8	Marceline
DDUG3019						120	121.5	1.5	3.7	5.7	Marceline
DDUG3026						98.3	102.7	4.5	18.6	83	Viago
DDUG3026						112	115.3	3.3	2.3	7.7	Viago
DDUG3042	9042	43993	1123	101	-61	190.4	192.5	2.1	15.3	32.2	Viago
DDUG3043	9042	43993	1123	92	-64	193.6	194.8	1.2	33	40.5	Viago
DDUG3044	9042	43994	1123	76	-69	185.3	191.3	6	8.9	53.9	Viago
DDUG3049	9042	43994	1123	62	-66	185.8	189.6	3.8	4.3	16.2	Viago
DDUG3050	9042	43994	1123	46	-64	190	190.8	0.8	13.8	10.8	Viago
DDUG3052						185.5	186.2	0.7	9.4	6.6	Viago
DDUG3054	9042	43994	1123	25	-74	182.8	184.4	1.6	56.4	87.9	Viago
DDUG3054						187.8	190	2.2	16	34.8	Viago
DDUG3056	9042	43994	1123	352	-71	185.3	188.6	3.4	4.9	16.6	Viago
DDUG3062	9286	44662	990	98	-56	89.2	95.7	6.5	9.8	63.8	Deacon Main
DDUG3063	9286	44662	990	101	-61	93.7	96.8	3.1	10.8	33.1	Deacon Main



ASX Announcement
13 October 2025

BELLEVUE
GOLD

Hole	East	North	RI	Azi	Dip	From (m)	To (m)	Interval	Au	Gram Metres	Mine Area
DDUG3064	9287	44662	990	89	-62	90.5	93.3	2.8	15.2	43.4	Deacon Main
DDUG3065	9287	44663	990	79	-58	86	93.2	7.3	21.4	155.3	Deacon Main
DDUG3066	9287	44663	990	77	-64	90.7	93.3	2.6	14.8	38.4	Deacon Main
DDUG3067	9286	44662	990	66	-60	88.6	93.4	4.9	24.9	120.9	Deacon Main
DDUG3068	9279	44634	990	80	-54	98	102	4	6.9	27.8	Deacon Main
DDUG3069	9279	44633	990	88	-46	102.7	106.8	4.1	9.2	37.9	Deacon Main
DDUG3070	9279	44633	990	98	-45	104.9	108.6	3.7	6.2	23.3	Deacon Main
DDUG3071	9279	44633	990	95	-51	105.2	111.8	6.6	11.8	77.7	Deacon Main
DDUG3072	9279	44633	990	96	-57	102.1	106.9	4.8	8	38	Deacon Main
DDUG3073						109.7	113.7	4	14.1	57.1	Deacon Main
DDUG3074	9274	44613	990	109	-43	114.3	115	0.7	19.8	13.2	Deacon Main
DDUG3074						118.2	119.2	1	24.2	23.7	Deacon Main
DDUG3077	9274	44613	990	119	-40	125.6	129	3.3	2.9	9.9	Deacon Main
DDUG3078	9274	44612	991	119	-36	123.4	126.8	3.4	46.8	159.3	Deacon Main
DDUG3079	9274	44612	991	127	-33	136	139.3	3.3	1.8	5.7	Deacon Main
DDUG3079	9274	44612	991	127	-33	141.9	143.8	1.9	5	9.5	Deacon Main
DDUG3081	9274	44612	991	132	-22	159.8	160.2	0.3	20	7	Deacon Main
DDUG3089	8972	43977	1399	301	-9	52.1	55	3	14.4	42.4	Tribune
DDUG3090	8972	43976	1399	288	-20	17.9	18.8	0.9	13.3	11.5	Tribune
DDUG3091						19	20	1	18.1	18.1	Tribune
DDUG3092	8972	43976	1399	288	-48	59.5	60.6	1.1	10.4	11.4	Tribune
DDUG3095	8972	43976	1399	261	-48	23.8	24.9	1.1	6.3	6.9	Tribune
DDUG3096						64.1	64.7	0.6	16.3	9.8	Tribune
DDUG3097						16.6	18.1	1.5	7.1	10.6	Tribune
DDUG3098	8972	43975	1399	254	-24	17.3	18.8	1.5	7.1	10.7	Tribune
DDUG3099						154.7	158.5	3.8	11.6	44.4	Marceline
DDUG3100	9017	45979	1089	69	-28	75.9	76.3	0.5	44.1	19.8	Marceline
DDUG3101						108.7	109	0.3	22.8	6.8	Marceline
DDUG3101						126	127.6	1.6	19.5	31.3	Marceline
DDUG3101						158.5	159.5	1.1	12	12.7	Marceline
DDUG3102	9017	45978	1089	88	-25	67.2	68	0.8	6.9	5.5	Marceline
DDUG3102						159.5	160.2	0.8	53.1	39.8	Marceline
DDUG3103	9017	45979	1089	69	-22	84.2	84.8	0.5	24.1	13	Marceline
DDUG3103						100.9	102.8	1.9	5.3	10	Marceline
DDUG3103						115.2	115.5	0.3	114	34.2	Marceline
DDUG3103						129.1	133.8	4.8	22	105.3	Marceline
DDUG3103						161	162.1	1.1	6.6	7.5	Marceline
DDUG3104	9017	45978	1089	85	-22	69.8	71.5	1.7	8.9	14.9	Marceline



ASX Announcement
13 October 2025

BELLEVUE
GOLD

Hole	East	North	RL	Azi	Dip	From (m)	To (m)	Interval	Au	Gram Metres	Mine Area
DDUG3104						74.8	77.5	2.7	2.8	7.7	Marceline
DDUG3104						81.5	83.5	2	4	7.9	Marceline
DDUG3104						95.4	95.8	0.4	74.4	29.8	Marceline
DDUG3104						111.2	111.7	0.5	14.9	6.9	Marceline
DDUG3104						160.5	162	1.6	9.6	14.8	Marceline
DDUG3105						106.2	106.5	0.3	17.9	5.4	Marceline
DDUG3105						157.4	161	3.6	7.2	26	Marceline
DDUG3106	9017	45978	1089	77	-18	91.1	95	3.9	8.3	32.2	Marceline
DDUG3106						108.2	111.4	3.1	5.1	16.1	Marceline
DDUG3106						130.3	131.9	1.6	13	20.4	Marceline
DDUG3106						162.1	164	1.9	4.2	8.2	Marceline
DDUG3106						200.6	203.7	3.1	2	6.3	Marceline
DDUG3108						114.2	117.1	2.9	4	11.5	Marceline
DDUG3108						124.5	128	3.5	9	31.8	Marceline
DDUG3108						139.8	140.7	0.9	6.5	5.7	Marceline
DDUG3108						165.9	169.1	3.2	3.4	10.7	Marceline
DDUG3108						178.8	183.3	4.5	8.3	37.6	Marceline
DDUG3108						186	189.6	3.6	7.8	27.9	Marceline
DDUG3108						202.8	203.1	0.3	19.4	5.8	Marceline
DDUG3109	9097	45830	1111	39	-28	89	89.3	0.3	47.1	14.1	Marceline
DDUG3109						121.6	122.2	0.6	17.5	10.5	Marceline
DDUG3109						130.6	131.5	0.9	16.5	15.5	Marceline
DDUG3110						144.8	148.8	4	11.9	47.1	Marceline
DDUG3111	9097	45830	1110	36	-35	90.2	93.2	3	5.9	17.4	Marceline
DDUG3111						150.3	154.1	3.8	10.2	38.5	Marceline
DDUG3112						110	111	1	5.1	5.1	Marceline
DDUG3112						116.9	121.5	4.6	6.4	29.4	Marceline
DDUG3112						133.1	133.5	0.5	11.5	5.5	Marceline
DDUG3113						121.6	121.9	0.3	46.4	13.9	Marceline
DDUG3113						136.6	139.4	2.8	9.2	25.6	Marceline
DDUG3113						152.7	153.4	0.7	13.4	9.5	Marceline
DDUG3114	9097	45830	1110	41	-39	87.6	88	0.4	13.5	5.4	Marceline
DDUG3114						155.1	155.4	0.4	36.6	13.6	Marceline
DDUG3116						110.6	114	3.4	5.5	18.8	Marceline
DDUG3116						127.4	130	2.6	3	7.8	Marceline
DDUG3117	9097	45830	1110	49	-46	28.7	29.2	0.4	17.9	7.9	Marceline
DDUG3117						115.6	117.5	1.9	21.8	42.2	Marceline
DDUG3117						131.8	132.4	0.6	14.3	8.8	Marceline



ASX Announcement
13 October 2025

BELLEVUE
GOLD

Hole	East	North	RI	Azi	Dip	From (m)	To (m)	Interval	Au	Gram Metres	Mine Area
DDUG3117						141.5	141.8	0.3	24.4	7.3	Marceline
DDUG3122	8983	43945	1398	277	-38	28	28.7	0.7	8.8	6.4	Tribune
DDUG3123						29.5	30.3	0.8	65.8	52.6	Tribune
DDUG3124	8983	43945	1398	279	-49	31.6	33	1.4	22.4	30.2	Tribune
DDUG3125	8983	43945	1398	255	-49	32.5	33.9	1.3	21.8	28.6	Tribune
DDUG3125						71.6	72	0.4	45.4	16.3	Tribune
DDUG3126	8983	43944	1398	255	-42	31	31.9	0.9	35.3	31.8	Tribune
DDUG3127	8983	43944	1399	235	-19	29.5	30.2	0.6	43	27.5	Tribune
DDUG3127						68.6	69.6	1	9.5	9.9	Tribune
DDUG3128	8983	43944	1398	237	-33	31.7	32.6	0.9	23	20.2	Tribune
DDUG3128						72.8	74.3	1.5	7.2	10.9	Tribune
DDUG3129	8983	43944	1398	236	-40	33.5	36.2	2.8	3.9	10.9	Tribune
DDUG3129						75.8	79.3	3.5	1.4	5.1	Tribune
DDUG3135						26.7	27.2	0.4	13.9	5.7	Tribune
DDUG3141	9055	44118	1120	57	-74	147.8	148.2	0.4	19.9	7.2	Viago
DDUG3142						160	162.1	2.1	9.5	19.8	Viago
DDUG3143						160.1	163.7	3.6	3.5	12.6	Viago
DDUG3143	9055	44119	1120	347	-75	174.5	174.8	0.3	19.3	5.8	Viago
DDUG3144	9055	44118	1120	23	-81	156	158.8	2.8	5.8	16.3	Viago
DDUG3145	9055	44119	1120	307	-75	162.9	166.4	3.5	28.9	100.7	Viago
DDUG3145						170.8	173.8	2.9	1.8	5.2	Viago
DDUG3146	9055	44119	1120	332	-83	160.6	163.2	2.5	5.4	13.8	Viago
DDUG3146						177	177.3	0.3	44.2	13.3	Viago
DDUG3147	9055	44118	1120	74	-83	158.7	159	0.3	54	16.2	Viago
DDUG3148						170.5	173.4	2.9	10.3	29.7	Viago
DDUG3149	9054	44118	1121	244	-82	162.5	165.7	3.3	4.1	13.2	Viago
DDUG3150						157.9	158.7	0.8	40.5	34	Viago
DDUG3151						167	167.6	0.6	24.2	15.5	Viago
DDUG3151						171.1	172.2	1.1	11.8	12.4	Viago
DDUG3152	9054	44118	1120	206	-79	169.6	175.2	5.6	4.5	25.2	Viago
DDUG3154	9054	44118	1121	187	-74	164	165	1	7.9	7.9	Viago
DDUG3154						179	179.4	0.4	15.1	5.4	Viago
DDUG3156						95.1	105	9.9	24.2	239.5	Tribune
DDUG3160	8981	44013	1399	261	-57	66.9	68.1	1.2	7.8	9.4	Tribune
DDUG3160						76.2	79.7	3.5	1.8	6.3	Tribune
DDUG3170						116.1	120	3.9	6.5	24.9	Marceline
DDUG3171	9042	46085	1139	58	-24	103	105.3	2.3	2.5	5.9	Marceline
DDUG3171						140.7	141.6	0.8	6	5	Marceline



ASX Announcement
13 October 2025

BELLEVUE
GOLD

Hole	East	North	RL	Azi	Dip	From (m)	To (m)	Interval	Au	Gram Metres	Mine Area
DDUG3172						143	145.3	2.3	4	9.2	Marceline
DDUG3172						147.5	150.3	2.8	2.5	6.9	Marceline
DDUG3173						87.6	91.8	4.3	3.3	14	Marceline
DDUG3173						109.2	111.3	2.1	10.8	22.5	Marceline
DDUG3174						100.8	103.9	3.2	2.7	8.6	Marceline
DDUG3175						120	121.1	1.1	6.7	7.1	Marceline
DDUG3177						84.9	85.2	0.3	26.5	8	Marceline
DDUG3177						91	93.8	2.8	10.5	29.9	Marceline
DDUG3177						126.5	127.3	0.8	8.4	6.5	Marceline
DDUG3177						160.4	161.4	1	9.8	9.6	Marceline
DDUG3178	9017	45978	1089	91	-21	67.3	71.9	4.6	3.4	15.5	Marceline
DDUG3178						76.3	78.6	2.3	8.4	19.1	Marceline
DDUG3178						85	89.2	4.2	3.7	15.6	Marceline
DDUG3178						100.3	103	2.7	2.2	6	Marceline
DDUG3178						113.1	116	2.9	3.8	10.9	Marceline
DDUG3178						162.1	163.6	1.5	16.7	25.6	Marceline
DDUG3179						99.2	102.2	2.9	11.1	32.6	Marceline
DDUG3179						137.5	138	0.5	59.7	31.1	Marceline
DDUG3179						189	192	3	2.4	7.3	Marceline
DDUG3179						194.5	195.6	1.1	90.9	99	Marceline
DDUG3180						90.4	91.4	1	9.2	8.9	Marceline
DDUG3180						163.7	166	2.3	3.1	7.1	Marceline
DDUG3181						70.9	71.9	1	18	18.6	Marceline
DDUG3181						165.4	167.4	2	3.6	7.2	Marceline
DDUG3182						86.9	87.6	0.7	7.1	5.2	Marceline
DDUG3182						126.2	127.2	1	21.3	21.1	Marceline
DDUG3183						73.1	76	2.8	7.6	21.6	Marceline
DDUG3183						155.7	157	1.3	23.1	28.9	Marceline
DDUG3184	9017	45978	1089	78	-32	69.2	71.3	2.1	4	8.2	Marceline
DDUG3184						123.5	125	1.5	8.9	13.4	Marceline
DDUG3184						142.6	144.7	2.1	3.3	7	Marceline
DDUG3184						153	157.6	4.6	30.2	137.5	Marceline
DDUG3185	9017	45978	1089	63	-33	61.6	66.4	4.7	5.2	24.9	Marceline
DDUG3185						84.2	86.7	2.5	6.7	16.7	Marceline
DDUG3185						158.4	160.7	2.3	4.3	9.8	Marceline
DDUG3189	8969	44072	1432	242	-62	61	62.5	1.5	4	6	Tribune
DDUG3189						73	74	1	8	8	Tribune
DDUG3190	8969	44072	1432	260	-60	53.8	56.1	2.3	2.3	5.4	Tribune



ASX Announcement
13 October 2025

BELLEVUE
GOLD

Hole	East	North	RL	Azi	Dip	From (m)	To (m)	Interval	Au	Gram Metres	Mine Area
DDUG3190						66	68.8	2.9	2.3	6.5	Tribune
DDUG3191	8969	44072	1432	272	-52	48	49.5	1.5	9	13.5	Tribune
DDUG3191						53.6	58	4.4	5.4	23.9	Tribune
DDUG3192	8969	44073	1432	296	-51	57.3	60.8	3.5	2.9	10	Tribune
DDUG3192						67.4	70.7	3.3	1.8	5.7	Tribune
DDUG3193	8969	44073	1432	296	-41	49.4	50	0.6	16.3	9.8	Tribune
DDUG3193						53	57.3	4.3	14.5	62.3	Tribune
DDUG3194	8969	44073	1432	311	-39	54.6	55	0.5	34	16	Tribune
DDUG3194						63	68.9	5.9	1.4	8.2	Tribune
DDUG3195	9274	44612	991	126	-29	100.8	101.3	0.5	28.5	14.3	Deacon Main
DDUG3196	9274	44613	990	103	-33	108.4	112.3	3.9	4.6	18.1	Deacon Main
DDUG3198	9279	44634	990	111	-54	114.3	117.7	3.4	20.5	70.3	Deacon Main
DDUG3199	9286	44661	990	110	-31	87.7	88.7	1	5	5	Deacon Main
DDUG3200	9286	44662	990	113	-61	100.2	100.8	0.7	37.8	25.3	Deacon Main
DDUG3200						101.6	104.8	3.2	2.7	8.4	Deacon Main
DDUG3201	9286	44662	990	91	-67	96.3	99.8	3.5	13.6	48	Deacon Main
DDUG3202	9286	44662	990	94	-36	84.1	87	2.9	14.8	43.3	Deacon Main
DDUG3202						90.6	92.7	2.1	5.4	11.6	Deacon Main
DDUG3203	9286	44663	990	59	-45	78.4	79.3	0.9	5.5	5	Deacon Main
DDUG3204	8999	44147	1427	229	-31	99.1	102.9	3.7	2.3	8.5	Tribune
DDUG3206						95.2	98.6	3.4	6.5	22.1	Tribune
DDUG3207						102.1	104.7	2.6	2.8	7.3	Tribune
DDUG3208	8999	44148	1427	266	-40	99.9	103	3.1	11.6	36.4	Tribune
DDUG3208						104.2	112	7.8	11	86.1	Tribune
DDUG3209	8999	44148	1427	266	-36	68.9	69.2	0.3	42.5	12.7	Tribune
DDUG3209						92.8	101.2	8.4	6.7	56	Tribune
DDUG3210	8999	44148	1428	269	-11	80.1	83.3	3.2	2.5	8.1	Tribune
DDUG3211	8999	44148	1427	274	-24	81.7	85.7	4	10.6	42.5	Tribune
DDUG3212						98.9	107.1	8.2	13	106.6	Tribune
DDUG3213	8999	44157	1427	271	-36	94.4	101.3	6.9	7.8	53.8	Tribune
DDUG3214	8999	44157	1427	278	-31	91.5	94.8	3.3	5.9	19.6	Tribune
DDUG3217	8999	44158	1427	290	-12	67.2	69.8	2.6	1.9	5.1	Tribune
DDUG3220						108.5	111.5	3	2.5	7.5	Tribune
DDUG3221	8999	44158	1427	302	-11	104.6	105.1	0.5	10.5	5.4	Tribune
DDUG3223	8999	44158	1427	307	-16	111.1	111.7	0.6	84.4	50.6	Tribune
DDUG3223						113.9	117	3.1	5.4	16.9	Tribune
DDUG3225	8969	44072	1432	240	-55	62.3	63.3	1	31.5	30.6	Tribune
DDUG3226	9287	44662	990	83	-31	76.5	78.1	1.6	13.9	22.7	Deacon Main



ASX Announcement
13 October 2025

BELLEVUE
GOLD

Hole	East	North	RI	Azi	Dip	From (m)	To (m)	Interval	Au	Gram Metres	Mine Area
DDUG3229						75.2	82.9	7.7	3.9	30.1	Deacon Main
DDUG3230	9279	44684	966	54	-37	75.4	78.3	2.8	31	87.1	Deacon Main
DDUG3230						79.2	83.4	4.3	2.4	10.3	Deacon Main
DDUG3231						70.4	73.6	3.2	137.8	446.3	Deacon Main
DDUG3232	9279	44684	966	29	-48	87.1	93.4	6.3	7.9	50.1	Deacon Main
DDUG3234	9279	44684	966	14	-47	84.2	84.9	0.8	8	6	Deacon Main
DDUG3234						97.2	100.6	3.4	1.6	5.5	Deacon Main
DDUG3235						77.2	78.7	1.5	14.3	20.8	Deacon Main
DDUG3236	9279	44683	966	82	-54	74.5	75.2	0.7	54.9	39.5	Deacon Main
DDUG3237	9279	44683	966	71	-68	79	79.5	0.5	22.5	11.7	Deacon Main
DDUG3238	9279	44684	966	69	-53	75.1	75.7	0.7	132.8	87.7	Deacon Main
DDUG3239	9279	44683	966	52	-67	75.4	79.9	4.5	2	9.2	Deacon Main
DDUG3240	9279	44683	966	59	-60	77.1	81.3	4.2	7.1	29.6	Deacon Main
DDUG3241	9279	44684	966	37	-64	73	75.2	2.2	2.5	5.4	Deacon Main
DDUG3241						80.7	83.5	2.8	19.9	56.4	Deacon Main
DDUG3242						85.1	86.3	1.2	57.7	69.9	Deacon Main
DDUG3244						170.8	171.1	0.3	17.4	5.2	Viago
DDUG3246	9055	44118	1120	139	-83	156.7	159.5	2.8	11.4	31.8	Viago
DDUG3246						166.4	167.6	1.2	9.3	11.2	Viago
DDUG3247						153.3	154.3	0.9	51.2	48.6	Viago
DDUG3248	9054	44119	1120	20	-87	155.5	156.6	1.1	5.4	5.7	Viago
DDUG3248						160.3	162.1	1.8	11.5	20.7	Viago
DDUG3249	9054	44118	1120	347	-80	160.5	163	2.6	12.7	32.3	Viago
DDUG3249						170.3	170.9	0.6	35.7	21.4	Viago
DDUG3250	9054	44118	1120	299	-84	159.3	162.5	3.3	4.1	13.4	Viago
DDUG3251	9054	44118	1120	269	-83	160.4	165.2	4.8	7.4	35.4	Viago
DDUG3252	9197	45912	1082	75	-8	9.5	10.4	0.9	31.6	27.5	Marceline
DDUG3253	9197	45912	1083	78	12	28.7	32	3.3	7.7	25.5	Marceline
DDUG3270	8998	44149	1427	259	-20	78	82.4	4.4	7.5	33	Tribune
DDUG3271	8998	44148	1427	234	-26	60.5	61	0.5	20	10	Tribune
DDUG3271						87.5	90	2.5	2.5	6.5	Tribune
DDUG3271						132.4	132.9	0.5	53.6	26.8	Tribune
DDUG3272	8998	44148	1427	255	-26	80.9	82.9	2	4.4	8.7	Tribune
DDUG3273						88.5	94.3	5.8	9.8	56.8	Tribune
DDUG3274	8998	44148	1427	230	-39	121.3	121.6	0.3	327	98.1	Tribune
DDUG3275	8998	44148	1427	237	-39	109	111.6	2.6	3.4	8.8	Tribune
DDUG3276						101.8	110.9	9.1	13	117.8	Tribune
DDUG3277						110.1	119.3	9.1	14.2	130.1	Tribune



ASX Announcement
13 October 2025

BELLEVUE
GOLD

Hole	East	North	RL	Azi	Dip	From (m)	To (m)	Interval	Au	Gram Metres	Mine Area
DDUG3278	8998	44158	1427	277	-10	83.3	87	3.7	1.5	5.6	Tribune
DDUG3282	8999	44158	1427	292	-32	104	107	3	17	51.1	Tribune
DDUG3282						107.5	111.8	4.3	1.2	5	Tribune
DDUG3284	8999	44158	1427	294	-35	110.4	116.1	5.8	5	28.7	Tribune
DDUG3285	8999	44158	1427	291	-37	110.4	117.4	6.9	5.6	38.8	Tribune
DDUG3286						103	106.6	3.6	1.6	5.8	Tribune
DDUG3286						108.7	112.1	3.4	6.7	22.9	Tribune
DDUG3287						88.6	94.1	5.5	16.5	90.6	Viago
DDUG3288	8987	44217	1043	120	-54	84.8	87.5	2.6	16.9	44.7	Viago
DDUG3289						84.1	89.4	5.3	3.6	18.9	Viago
DDUG3290	8990	44225	1043	146	-72	81.8	84.6	2.9	13.7	39.3	Viago
DDUG3291	8990	44224	1043	151	-61	90.3	92.1	1.8	4.6	8.3	Viago
DDUG3292						92.2	94.9	2.7	16	43.7	Viago
DDUG3294	8990	44224	1043	194	-62	92.7	95.9	3.2	4.8	15.3	Viago
DDUG3296	8949	44180	1044	102	-54	102.2	103.6	1.3	7.3	9.6	Viago
DDUG3298	8949	44179	1044	113	-56	101.5	103.4	1.9	3.8	7.2	Viago
DDUG3299	8949	44179	1044	114	-48	110.3	114.5	4.1	5	20.6	Viago
DDUG3299	8949	44179	1044	114	-48	117.2	120.3	3.1	9.8	30.1	Viago
DDUG3300	9094	45902	1058	86	-5	40.4	43.4	3	3.2	9.6	Marceline
DDUG3300						67.4	69.5	2.2	2.4	5.2	Marceline
DDUG3300						71.8	73.6	1.8	24.4	43.2	Marceline
DDUG3300						77.8	79.3	1.6	5	7.7	Marceline
DDUG3300						87.3	90.7	3.4	3.3	11.1	Marceline
DDUG3301	9094	45905	1058	67	-7	5.9	6.5	0.6	9.2	5.5	Marceline
DDUG3301						40.2	43	2.8	10.2	28.5	Marceline
DDUG3301						79	80.1	1.1	12	12.9	Marceline
DDUG3301						86.3	91.9	5.6	5.2	29.3	Marceline
DDUG3307	9094	45904	1057	59	-36	4.9	6.3	1.4	4.3	6	Marceline
DDUG3307						18.9	21.1	2.2	4	9	Marceline
DDUG3307						37.5	40	2.5	4.5	11.2	Marceline
DDUG3308	9094	45905	1058	35	-18	5	7.8	2.8	2.5	6.9	Marceline
DDUG3308						30.4	31.1	0.6	212.3	135.8	Marceline
DDUG3308						53.2	54.1	0.9	43.2	38.9	Marceline
DDUG3317						196.5	196.9	0.4	21.1	8.4	Viago
DDUG3318	9042	43994	1123	358	-62	193.1	194.5	1.4	8.1	11.6	Viago
DDUG3318						197.2	197.9	0.7	12.6	9	Viago
DDUG3319	9042	43994	1123	0	-59	199	201.3	2.3	11.2	25.4	Viago
DDUG3321	9042	43994	1123	7	-62	192	192.3	0.3	37.5	11.3	Viago



ASX Announcement
13 October 2025

BELLEVUE
GOLD

Hole	East	North	RI	Azi	Dip	From (m)	To (m)	Interval	Au	Gram Metres	Mine Area
DDUG3321						195.9	196.7	0.8	23.6	18	Viago
DDUG3322	9042	43995	1123	13	-67	187.2	192.9	5.7	3.8	21.6	Viago
DDUG3326	9072	43880	1125	91	-65	195.3	196.5	1.2	35.7	42.8	Viago
DDUG3327	9072	43880	1125	108	-74	208.7	212.5	3.8	1.8	6.8	Viago
DDUG3328	9075	43881	1125	98	-60	197.7	198.5	0.8	14.4	10.8	Viago
DDUG3329						199.3	201	1.7	33.3	55.6	Viago
DDUG3330	9072	43880	1125	107	-65	168.3	170.7	2.4	3.9	9.2	Viago
DDUG3345						20	22	2.1	15.7	32.4	Marceline
DDUG3346						15.6	18.5	3	6.8	20.1	Marceline
DDUG3346						32.5	34.3	1.8	3.9	7	Marceline
DDUG3346						86.2	87	0.7	31	23	Marceline
DDUG3347	9094	45902	1057	97	-30	26.1	29.4	3.3	4.2	13.6	Marceline
DDUG3347						51.1	52.1	1	56	56.6	Marceline
DDUG3347						63.9	65.8	1.9	91.6	173.2	Marceline
DDUG3348	9094	45901	1057	106	-38	22.8	23.5	0.7	41.3	30.1	Marceline
DDUG3348						45.2	46.5	1.3	11.2	14.7	Marceline
DDUG3348						83	83.4	0.5	69.4	31.2	Marceline
DDUG3348						87.8	90.6	2.8	21.1	58.3	Marceline
DDUG3349	8998	44149	1427	273	-18	78.7	81.5	2.8	2.8	7.8	Tribune
DDUG3351	8998	44149	1427	258	-30	82.9	87	4.1	4.7	18.9	Tribune
DDUG3352	8999	44147	1427	221	-29	109.8	113	3.2	2.3	7.4	Tribune
DDUG3353						127.2	131	3.8	2.8	10.7	Tribune
DDUG3355	8999	44157	1427	283	-33	95	98.5	3.5	3.9	13.5	Tribune
DDUG3357						147.3	150	2.7	2.4	6.3	Tribune
DDUG3358						160.1	162.6	2.5	17.1	42.5	Tribune
DDUG3359	9094	45901	1058	106	-12	39.5	40.9	1.5	21.5	31.6	Marceline
DDUG3360						49	49.7	0.7	7.7	5	Marceline
DDUG3361						35	37.3	2.3	5.9	13.4	Marceline
DDUG3361						65.4	68.5	3.1	7.9	24.6	Marceline
DDUG3362						11.6	12.9	1.3	10.4	13.5	Marceline
DDUG3362	9092	45900	1057	143	-36	30.3	33	2.7	6.5	17.6	Marceline
DDUG3362						61	64	3	7.4	21.9	Marceline
DDUG3363						52.6	56.5	3.8	12	45.9	Marceline
DDUG3363						65.4	67.1	1.7	7.8	13.5	Marceline
DDUG3368	9026	43842	1388	298	-16	108.1	108.7	0.6	12.1	7.3	Tribune
DDUG3375	9026	43839	1388	263	-7	82.2	85.2	3.1	2	6	Tribune
DDUG3376	9026	43839	1388	250	0	54.9	55.3	0.4	18.1	7.2	Tribune
DDUG3387	9042	43994	1123	5	-73	187.7	190.2	2.5	5.1	13.1	Viago



ASX Announcement
13 October 2025

BELLEVUE
GOLD

Hole	East	North	RL	Azi	Dip	From (m)	To (m)	Interval	Au	Gram Metres	Mine Area
DDUG3388						184.9	186	1.1	29.4	33.2	Viago
DDUG3388						190	191.2	1.2	4.9	5.8	Viago
DDUG3395	8987	44217	1043	128	-39	116.6	119	2.4	3.3	8	Viago
DDUG3411	9274	44613	991	113	-13	110.7	112.3	1.6	4.7	7.4	Deacon Main
DDUG3416	9274	44613	991	131	-15	149.7	150.1	0.4	17.4	6.4	Deacon Main
DDUG3564	259042	6938994	123	26	-52	Results not received					

Table 1 - JORC Code, 2012 Edition

Section 1 Sampling Techniques and Data (Criteria in this section apply to all succeeding sections)

Criteria	JORC Code explanation	Commentary
Sampling Techniques	<ul style="list-style-type: none"> Nature and quality of sampling (eg. cut channels, random chips, or specific specialized industry standard measurement tools appropriate to the minerals under investigation, such as downhole gamma sondes, or handheld XRF instruments, etc). These examples should not be taken as limiting the broad meaning of sampling. Include reference to measures taken to ensure sample representivity and the appropriate calibration of any measurement tools or systems used. Aspects of the determination of mineralisation that are Material to the Public Report. In cases where 'industry standard' work has been done this would be relatively simple (eg. 'reverse circulation drilling was used to obtain 1m samples from which 3kg was pulverised to produce a 30g charge for fire assay'). In other cases more explanation may be required, such as where there is coarse gold that has inherent sampling problems. Unusual commodities or mineralisation types (eg. submarine nodules) may warrant disclosure of detailed information. 	<ul style="list-style-type: none"> Diamond holes were completed by NQ Diamond Core drilling. Core was sampled between 2 to 4m either side of logged mineralisation. Where mineralisation exceeds 30cm in down hole length, sampling is completed 4m above and below the intercept. Where mineralisation is less than 30cm in down hole length, sampling is completed 2m above and below the intercept. Sampling practice is appropriate to the geology and mineralisation of the deposit and complies with industry best practice. Underground face/wall/and backs mapping as well as face samples are collected by underground mine geologists. All faces/walls/backs are washed prior to mapping and/or sampling. Maximum sample interval length is 1.0m, minimum sample length is 0.3m, with 0.3-0.5m buffer samples taken. Face sampling is completed using a geopick, whereby a geologist samples along a marked interval line, collecting 1-3kg of representative rock chips. All underground data collected is calibrated using underground survey laser positions. Face samples carry an inherent bias due to the challenges of obtaining a truly representative sample due to the sample collection technique. Duplicates of all face sample data are collected to reduce the systematic bias and check precision and repeatability results. No information is available about the sampling techniques from the historical drilling
Drilling Techniques	<ul style="list-style-type: none"> Drill type (eg. core, reverse circulation, open-hole hammer, rotary air blast, auger, Bangka, sonic, etc) and details (eg. core diameter, triple or standard tube, depth of diamond tails, face-sampling bit or other type, whether core is oriented and if so, by what method, etc). 	<ul style="list-style-type: none"> Diamond coring was undertaken with an underground drill rig and industry recognised quality contractor. Underground drilling was conducted by NQ core size (45.1mm). The core was orientated using a Reflex Ez-Ori tool. Historical drilling covers both diamond and reverse circulation techniques.
Drill Sample Recovery	<ul style="list-style-type: none"> Method of recording and assessing core and chip sample recoveries and results assessed. Measures taken to maximise sample recovery and ensure representative nature of the samples. Whether a relationship exists between sample recovery and grade and whether sample bias may have occurred due to preferential loss/gain of fine/coarse material. 	<ul style="list-style-type: none"> Diamond core recovery was measured for each run and calculated as a percentage of the drilled interval, in fresh rock, the core recovery was excellent at 100%. No quantitative analysis of recovery has been undertaken on the drillholes. No information is available for historical drilling
Logging	<ul style="list-style-type: none"> Whether core and chip samples have been geologically and geotechnically logged to a level of detail to support appropriate Mineral Resource estimation, mining studies and metallurgical studies. Whether logging is qualitative or quantitative in nature. Core (or costean, channel, etc) photography. 	<ul style="list-style-type: none"> All core was geologically logged. Lithology, veining, alteration, mineralisation and weathering are recorded in the geology table of the drillhole database. Final and detailed geological logs were forwarded from the field following cutting and sampling. All core is photographed in both dry and wet images.



ASX Announcement
13 October 2025

BELLEVUE
GOLD

Criteria	JORC Code explanation	Commentary
	<ul style="list-style-type: none"> <i>The total length and percentage of the relevant intersections logged.</i> 	<ul style="list-style-type: none"> Geological logging of core is qualitative and descriptive in nature. All ore faces are photographed and mapped.
Sub-Sampling Techniques and Sample Preparation	<ul style="list-style-type: none"> <i>If core, whether cut or sawn and whether quarter, half or all core taken.</i> <i>If non-core, whether riffled, tube sampled, rotary split, etc and whether sampled wet or dry.</i> <i>For all sample types, the nature, quality and appropriateness of the sample preparation technique.</i> <i>Quality control procedures adopted for all sub-sampling stages to maximize representivity of samples.</i> <i>Measures taken to ensure that the sampling is representative of the in situ material collected, including for instance results for field duplicate/second-half sampling.</i> <i>Whether sample sizes are appropriate to the grain size of the material being sampled.</i> 	<ul style="list-style-type: none"> Up until January 2025 all modern core was cut in half, with one half retained as a reference and the other sent for assay. In January 2025 Bellevue switched analysis laboratories from ALS to SGS in Kalgoorlie. With the laboratory transition Bellevue Gold have commenced sampling of full core intervals. All sub-sampling techniques and sample preparation procedures conducted and/or supervised by Bellevue geology personnel are to standard industry practice. Sub-sampling and sample preparation techniques used are considered to maximise representivity of drilled material. QA/QC procedures implemented during each drilling program are to industry standard practice. QAQC samples were inserted in the sample runs, comprising gold standards (CRM's or Certified Reference Materials) and sourced blank material (barren basalt). Samples sizes are considered appropriate for this style of gold mineralisation and as an industry accepted method for evaluation of gold deposits in the Eastern Goldfields of Western Australia.
Quality of Assay Data and Laboratory Tests	<ul style="list-style-type: none"> <i>The nature, quality and appropriateness of the assaying and laboratory procedures used and whether the technique is considered partial or total.</i> <i>For geophysical tools, spectrometers, handheld XRF instruments, etc, the parameters used in determining the analysis including instrument make and model, reading times, calibrations factors applied and their derivation, etc.</i> <i>Nature of quality control procedures adopted (eg. standards, blanks, duplicates, external laboratory checks) and whether acceptable levels of accuracy (ie lack of bias) and precision have been established.</i> 	<ul style="list-style-type: none"> Assaying and laboratory procedures used are NATA certified techniques for gold. Samples were prepared and assayed at NATA accredited Labs ALS and SGS in Kalgoorlie. All samples are initially sent to the ALS or SGS sample Preparation facility in Kalgoorlie. Samples were dried, crushed to nominal 90% passing 3 to 3.15mm, linear split and a nominal 500g sub sample taken (method code CRU-42a). The 500g sample is assayed for gold by PhotonAssay along with quality control samples including certified reference materials, blanks and sample duplicates. About the PhotonAssay Analysis Technique: <ul style="list-style-type: none"> Developed by CSIRO and the Chrysol Corporation, the PhotonAssay technique is a fast and chemical free alternative to the traditional fire assay process and utilizes high energy x-rays. The process is non-destructive on and utilises a significantly larger sample than the conventional 50g fire assay. PhotonAssay results are benchmarked against conventional fire assay. The National Association of Testing Authorities (NATA), Australia's national accreditation body for laboratories, has issued ALS with accreditation for the technique in compliance with ISO/IEC 17025:2018-Testing. In addition to the Company QAQC samples (described earlier) included within the batch the

Criteria	JORC Code explanation	Commentary
		laboratory included its own CRM's, blanks and duplicates.
Verification of Sampling and Assaying	<ul style="list-style-type: none"> <i>The verification of significant intersections by either independent or alternative company personnel.</i> <i>The use of twinned holes.</i> <i>Documentation of primary data, data entry procedures, data verification, data storage (physical and electronic) protocols.</i> <i>Discuss any adjustment to assay data.</i> 	<ul style="list-style-type: none"> Intersection assays were documented by Bellevue's professional exploration geologists and verified by Bellevue's Chief Geologist. No drillholes were twinned. All assay data were received in electronic format from ALS and SGS, checked, verified and merged into Bellevue's database. Original laboratory data files in CSV and locked PDF formats are stored together with the merged data. There were no adjustments to the assay data.
Location of Data Points	<ul style="list-style-type: none"> <i>Accuracy and quality of surveys used to locate drillholes (collar and down-hole surveys), trenches, mine workings and other locations used in Mineral Resource estimation.</i> <i>Specification of the grid system used.</i> <i>Quality and adequacy of topographic control.</i> 	<ul style="list-style-type: none"> All drillholes surveyed with a differential GPS system to achieve x - y accuracy of 2cm and height (z) to +/- 10cm. All collar location data is in Mine grid. Downhole surveys were by a north seeking gyroscope every 30m downhole.
Data Spacing and Distribution	<ul style="list-style-type: none"> <i>Data spacing for reporting of Exploration Results.</i> <i>Whether the data spacing and distribution is sufficient to establish the degree of geological and grade continuity appropriate for the Mineral Resource and Ore Reserve estimation procedure(s) and classifications applied.</i> <i>Whether sample compositing has been applied.</i> 	<ul style="list-style-type: none"> The drillhole intersections are between 10m and 40m apart which is adequate for a mineral Resource estimation in the Indicated category. Face sample data through underground mining areas with ore drive exposure across a lode are typically sampled every 3.3m. No sample compositing has been applied to reported results.
Orientation of Data in Relation to Geological Structure	<ul style="list-style-type: none"> <i>Whether the orientation of sampling achieves unbiased sampling of possible structures and the extent to which this is known, considering the deposit type.</i> <i>If the relationship between the drilling orientation and the orientation of key mineralized structures is considered to have introduced a sampling bias, this should be assessed and reported if material.</i> 	<ul style="list-style-type: none"> Drill pattern is a fan dice 5 pattern from underground drill drive. True widths will vary depending on angle of intersection. No bias is considered to have been introduced by the existing sampling orientation. Faces are sampled perpendicular to the ore zone
Sample Security	<ul style="list-style-type: none"> <i>The measures taken to ensure sample security.</i> 	<ul style="list-style-type: none"> Samples were secured in closed polyweave sacks for delivery to the laboratory sample receipt yard in Kalgoorlie by Bellevue personnel.
Audits or Reviews	<ul style="list-style-type: none"> <i>The results of any audits or reviews of sampling techniques and data.</i> 	<ul style="list-style-type: none"> No audits or reviews completed. Numerous task observations were carried out to ensure the sampling procedure is carried out correctly.

Section 2 Reporting of Exploration Results

Criteria	JORC Code explanation	Commentary
Mineral Tenement and Land Tenure Status	<ul style="list-style-type: none"> Type, reference name/number, location and ownership including agreements or material issues with third parties such as joint ventures, partnerships, overriding royalties, native title interests, historical sites, wilderness or national park and environmental settings. The security of the tenure held at the time of reporting along with any known impediments to obtaining a license to operate in the area. 	<ul style="list-style-type: none"> The Bellevue Gold Project consists of three granted mining licenses M36/24, M36/25, M36/299 and one granted exploration license E36/535. Golden Spur Resources Pty Ltd, a wholly owned subsidiary of Bellevue Gold Limited (formerly Draig Resources Limited) owns the tenements 100%. There are no known issues affecting the security of title or impediments to operating in the area.
Exploration Done by Other Parties	<ul style="list-style-type: none"> Acknowledgment and appraisal of exploration by other parties. 	<ul style="list-style-type: none"> Historical work reviewed was completed by a number of previous workers spanning a period of over 100 years. More recently and particularly in terms of the geophysical work reviewed the companies involved were Plutonic Operations Limited, Barrick Gold Corporation and Jubilee Mines NL.
Geology	<ul style="list-style-type: none"> Deposit type, geological setting and style of mineralisation. 	<ul style="list-style-type: none"> The Bellevue Gold Project is located within the Agnew-Wiluna portion of the Norseman-Wiluna Greenstone belt, approximately 40km NNW of Leinster. The project area comprises felsic to intermediate volcanic sequences, meta-sediments, ultramafic komatiite flows, Jones Creek Conglomerates and tholeiitic meta basalts (Mt Goode Basalt) which hosts the known gold deposits. The major gold deposits in the area lie on or adjacent to north-northwest trending fault zones. The Bellevue gold deposit is hosted by the partly tholeiitic meta-basalts of the Mount Goode Basalts in an area of faulting, shearing and dilation to form a shear hosted lode style quartz/basalt breccia.
Drillhole Information	<ul style="list-style-type: none"> A summary of all information material to the understanding of the exploration results including a tabulation of the following information for all Material drillholes: <ul style="list-style-type: none"> easting and northing of the drillhole collar elevation or RL (Reduced Level - elevation above sea level in metres) of the drillhole collar dip and azimuth of the hole downhole length and interception depth hole length. If the exclusion of this information is justified on the basis that the information is not Material and this exclusion does not detract from the understanding of the report, the Competent Person should clearly explain why this is the case. 	<ul style="list-style-type: none"> A list of previously unreleased drilling results from the March and June 2025 quarters are listed in this report. All material drill results have been reported previously
Data Aggregation Methods	<ul style="list-style-type: none"> In reporting Exploration Results, weighting averaging techniques, maximum and/or minimum grade truncations (eg. cutting of high-grades) and cutoff grades are usually Material and should be stated. Where aggregate intercepts incorporate short lengths of high-grade results and longer lengths of low grade results, the procedure used for such aggregation should be stated and some typical examples of such aggregations should be shown in detail. 	<ul style="list-style-type: none"> Drillhole intersections are reported above a lower cutoff grade of 1g/t gold and no upper cutoff grade has been applied. Low grade mineralisation (0.25 to 1.0 g/t gold) which is found to surround mineralised lodes is also flagged into separate domains from the main mineralised lodes. A minimum intercept length of 0.3m applies to the sampling in the tabulated results presented in the



ASX Announcement
13 October 2025

BELLEVUE
GOLD

Criteria	JORC Code explanation	Commentary
	<ul style="list-style-type: none"> <i>The assumptions used for any reporting of metal equivalent values should be clearly stated.</i> 	<ul style="list-style-type: none"> main body of this release. Up to 2m of internal dilution have been included. No metal equivalent reporting has been applied.
Relationship between Mineralisation Widths and Intercept Lengths	<ul style="list-style-type: none"> <i>These relationships are particularly important in the reporting of Exploration Results.</i> <i>If the geometry of the mineralisation with respect to the drillhole angle is known, its nature should be reported.</i> <i>If it is not known and only the downhole lengths are reported, there should be a clear statement to this effect (eg. 'downhole length, true width not known').</i> 	<ul style="list-style-type: none"> The relationship with true width will vary dependent on the intersection angle of the fan pattern. Intersections from the current drill platforms are close to true width with expected >80% of the reported drill intersection.
Diagrams	<ul style="list-style-type: none"> <i>Appropriate maps and sections (with scales) and tabulations of intercepts should be included for any significant discovery being reported. These should include, but not be limited to a plan view of drillhole collar locations and appropriate sectional views.</i> 	<ul style="list-style-type: none"> Included elsewhere in this release.
Balanced Reporting	<ul style="list-style-type: none"> <i>Where comprehensive reporting of all Exploration Results is not practicable, representative reporting of both low and high-grades and/or widths should be practiced to avoid misleading reporting of Exploration Results.</i> 	<ul style="list-style-type: none"> All results above 5 gram metres gold have been reported and form the main mineralised domains at the Bellevue Gold Project.
Other Substantive Exploration Data	<ul style="list-style-type: none"> <i>Other exploration data, if meaningful and material, should be reported including (but not limited to): geological observations; geophysical survey results; geochemical survey results; bulk samples – size and method of treatment; metallurgical test results; bulk density, groundwater, geotechnical and rock characteristics; potential deleterious or contaminating substances.</i> 	<ul style="list-style-type: none"> Not applicable.
Further Work	<ul style="list-style-type: none"> <i>The nature and scale of planned further work (eg. tests for lateral extensions or depth extensions or large-scale step-out drilling).</i> <i>Diagrams clearly highlighting the areas of possible extensions, including the main geological interpretations and future drilling areas, provided this information is not commercially sensitive.</i> 	<ul style="list-style-type: none"> Bellevue is currently actively mining the mining Reserve at the Bellevue Gold Project. Grade control is ongoing with 5 underground diamond rigs developing the areas reported in the announcement.