

30 October 2023

Pegmatite swarms up to 182m in aggregate thickness in Chubb North drilling

Chubb Central assay results extend mineralised zone

HIGHLIGHTS

- Chubb North maiden diamond drilling intersects a large stacked LCT pegmatite system with dykes having up to 182m of aggregated thickness and an outcrop strike length exceeding 500m.
- Field results¹ from LIBS and pXRF analysis on Chubb North drill core indicate that pegmatite intersections have LCT-pegmatite affinities and are therefore prospective for lithium.
- Chubb Central drilling assay results demonstrate extension, continuity, and consistency of spodumene mineralised zone over its 600m strike length, and extending from surface to below 200m depth:
- Latest Chubb Central drilling results include:
 - 6m at 1.70% Li₂O from 250m CLP028
 - 6m at 1.37% Li₂O from 221m CLP027
 - 4m at 1.42% Li₂O from 6m CLP004
 - 3m at 1.99% Li₂O from 168m CLP025
- New drilling intersections support previous high grade (>1.20% Li₂O) spodumene mineralisation results which returned:
 - 12.0m at 1.57% Li₂O from 108m 21-CH-15
 - 11.8m at 1.28% Li₂O from 83.2m 21-CH-17
 - 10.1m at 1.03% Li₂O from 170m CLP08a
 - 9m at 1.34% Li₂O from 92m CLP003
 - 9.0m at 1.26% Li₂O from 69m 21-CH-07
 - 8.2m at 1.31% Li₂O from 130.4m including 4.2m at 1.93% Li₂O CLP010
- Drilling has resumed at Chubb after a 2 week break for hunting season.

Burley Minerals Limited (ASX: BUR, “Burley” or “the Company”) is pleased to announce it has drilled its first 4 diamond holes into the **Chubb North Prospect** in the heart of the world-class lithium province of Québec, Canada and defined two large LCT pegmatite targets. In addition, diamond core assay results from the **Chubb Central Prospect** have extended the known strike length of spodumene mineralisation, while confirming continuity and consistency of the mineralised zone. This mineralised zone remains open to the north and south, and at depth. New pegmatite intersections indicate parallel repetitions, both west and east of the main dyke, supporting further exploration drilling.

Burley Minerals Managing Director and CEO, Stewart McCallion commented:

“Excitement is building following examination of the initial 4 diamond holes drilled into the newly identified LCT pegmatite target at Chubb North. All 4 holes encountered pegmatite zones greater than 30m wide with combined widths of up to 182m, and with the largest pegmatite outcrop exceeding 500m of strike length. Importantly the pXRF and LIBS geochemical results suggest very positive

¹ Geochemical results are qualitative and intended to provide guidance to Company geologists when planning future field work only. NB pXRF cannot analyse Lithium.

indications of lithium fertility in this recently recognised, large, untested system and we are looking forward to getting more holes in the ground as soon as possible.

“We are also pleased with the latest round of assay results from Chubb Central, which expands the spodumene zone both north and south while successfully intersecting mineralised pegmatites to the east of Chubb Central, confirming the first of a suite of targets identified by the recent ANT geophysical surveys.

“Having completed more than 9,000m of drilling at Chubb since April of this year, Company geologists have commenced the large job of compiling and reviewing all data, matching it with drill logs, and placing it into the structural context provided by the ANT geophysics survey. This is expected to generate further drilling designed to expand the extent of the known spodumene pegmatites at Chubb Central and explore for new mineralisation at Chubb North.”

Chubb North Maiden Drilling Programme

The initial 4 diamond holes drilled at Chubb North produced 678m of core before to a short break due to hunting season. The core has been logged and analysed with portable XRF and LIBS equipment. Geologists recorded aggregated LCT pegmatite widths of between 51m and 182m in each of the 4 diamond holes.

Table 1: Table of Chubb North Significant Pegmatite Intercepts

Hole ID	Pegmatite Name	Depth m	Pegmatite Combined width m	Pegmatite % of hole	Comments
CLP047	CN3	120	51.0	42%	Pegmatite intercepts range between 1m and 31m
CLP048	CN3	138	52.8	38%	Pegmatite intercepts range between 0.7m and 37m
CLP049	CN1	201	138.0	69%	Pegmatite intercepts range between 0.6m and 47m
CLP050	CN1	219	182.0	83%	Pegmatite intercepts range between 0.6m and 57m

Field results from LIBS and pXRF portable analysers, used to geochemically assess muscovite and microcline crystals from Chubb North drill core, indicate LCT-pegmatite affinities, and are therefore prospective for lithium. These tools provide qualitative assay data for internal use only, however indicate lithium mineralisation potential within the pegmatite appraised. Pegmatite intersections from all 4 holes have been cut and shipped for formal analysis with assays expected within 4 to 6 weeks. Geological evaluation, including further mapping and detailed core appraisal, is continuing concurrently while advancing drilling permits and other pre-drilling logistics ahead of the resumption of drilling at Chubb North.



Photo 1. Outcropping CN1 pegmatite target at Chubb North outcropping up to 40m above ground.

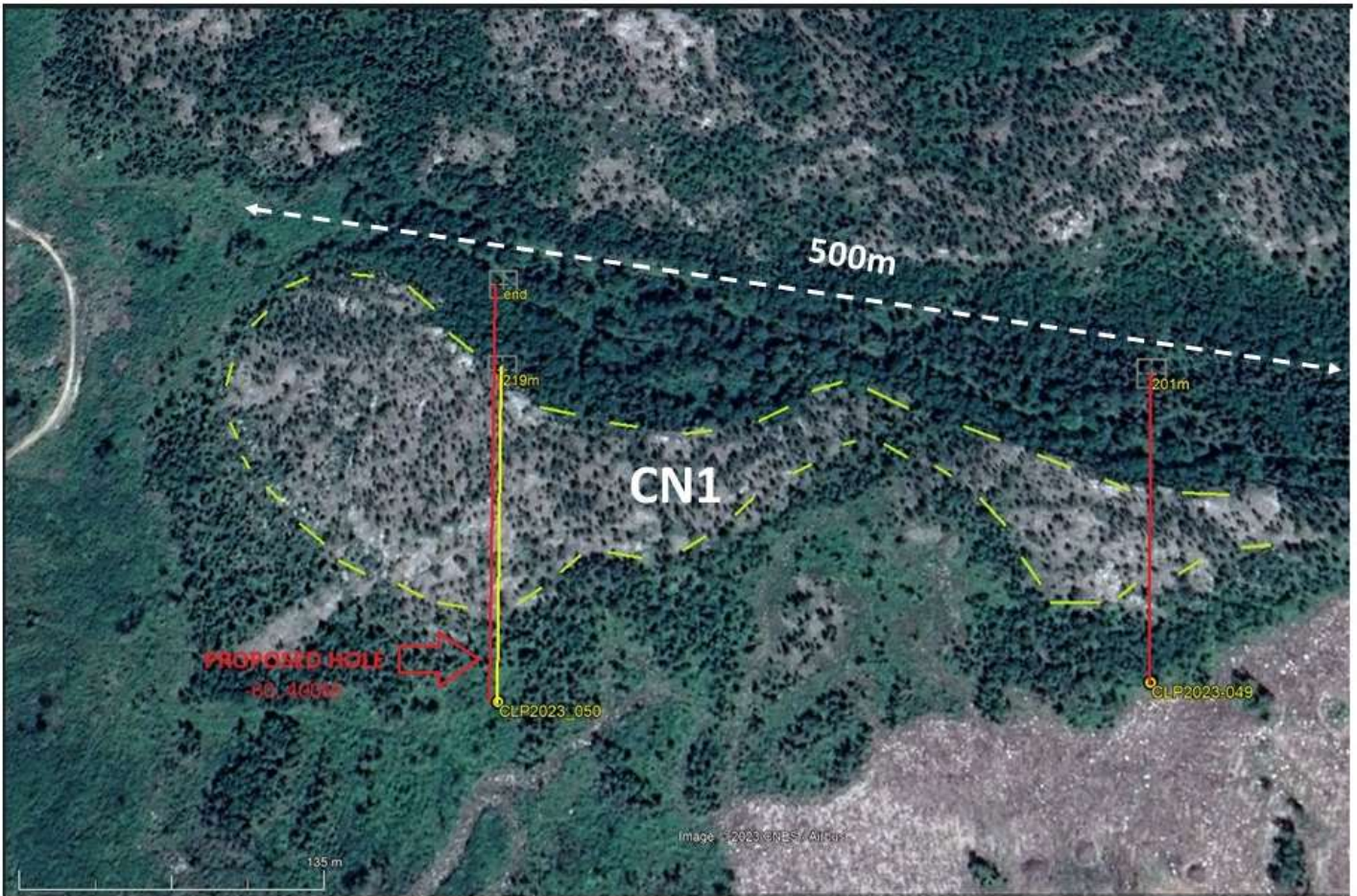


Figure1. Chubb North CN1 pegmatite with at least 500m strike with location of CLP049 and CLP50 diamond holes that had LCT pegmatite combined intercepts of 138m (69% of hole) and 182m (83% of hole), respectively.



Figure 2. Chubb Lithium Project claim boundary illustrating the Chubb Central mineralised zone and the newly identified Chubb North prospect.



Figure 3. Chubb North where the preliminary drilling programme was completed at CN1 and CN3 targets.

Chubb Central assay results extend spodumene mineralised zone

Latest Chubb Central drilling results include:

- 6m at 1.70% Li₂O from 250m CLP028
- 6m at 1.37% Li₂O from 221m CLP027
- 4m at 1.42% Li₂O from 6m CLP004
- 3m at 1.99% Li₂O from 168m CLP025

Diamond core assay results from the Chubb Central Prospect have extended the known strike length of spodumene mineralisation, while confirming continuity and consistency of the mineralised zone. This mineralised zone remains open to the north and south, and at depth. New pegmatite intersections indicate parallel repetitions, both west and east of the main dyke, supporting further exploration drilling. The current results are consistent with the previously reported drilling results below.

2023 Previously released²

- 10.1m at 1.03% Li₂O from 170m CLP08a
- 9m at 1.34% Li₂O from 92m CLP003
- 7m at 1.51% Li₂O from 48.36m GPT001
- 2m at 1.93% Li₂O from 49m CLP017
- 8.2m at 1.31% Li₂O from 130.4m including 4.2m at 1.93% Li₂O CLP010
- 7.7m at 1.30% Li₂O from 80.1m including 3.0m at 1.81% Li₂O CLP008
- 4.0m at 1.23% Li₂O from 58.8m CLP007

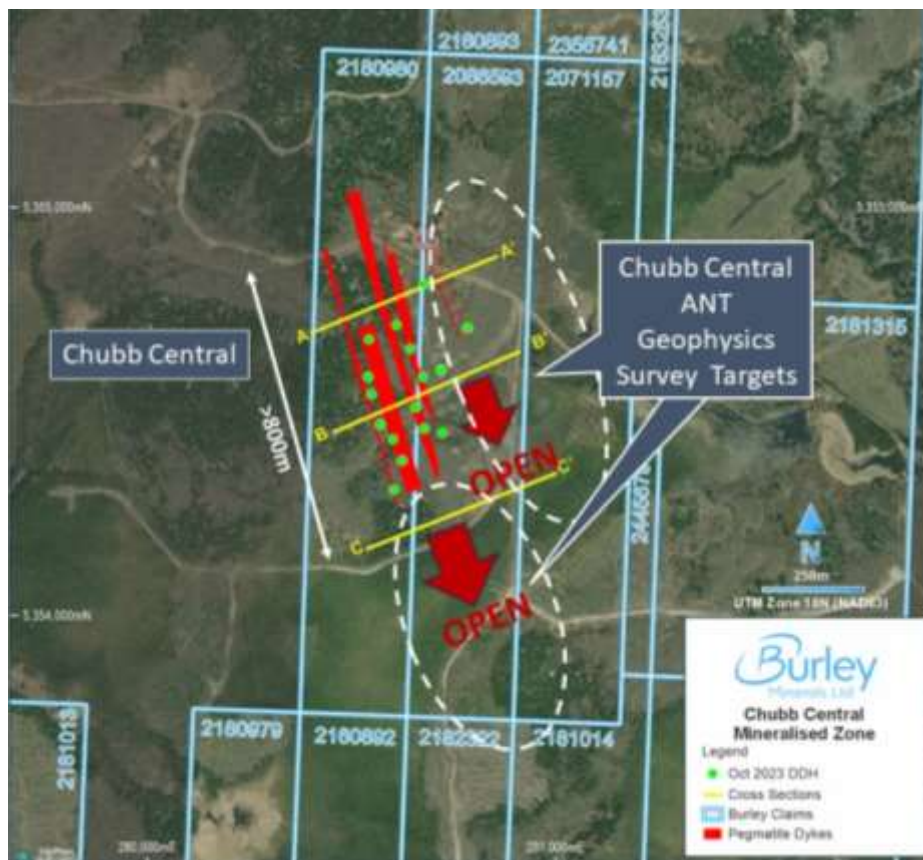


Figure 4. Chubb Central mineralised zone showing the parallel dykes with cross sections indicated.

² See ASX announcements dated 6 June 2023 and 3 July 2023.

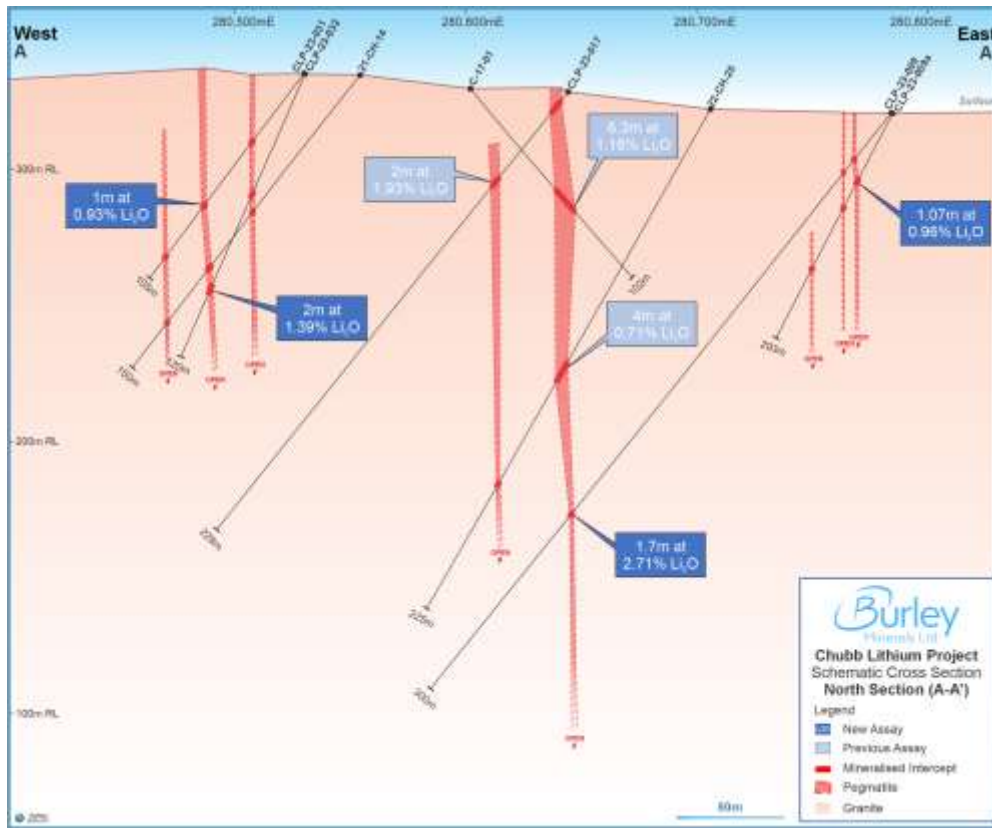


Figure 5. Cross Section A-A' through Chubb Central mineralised zone showing the multiple parallel spodumene bearing dykes.

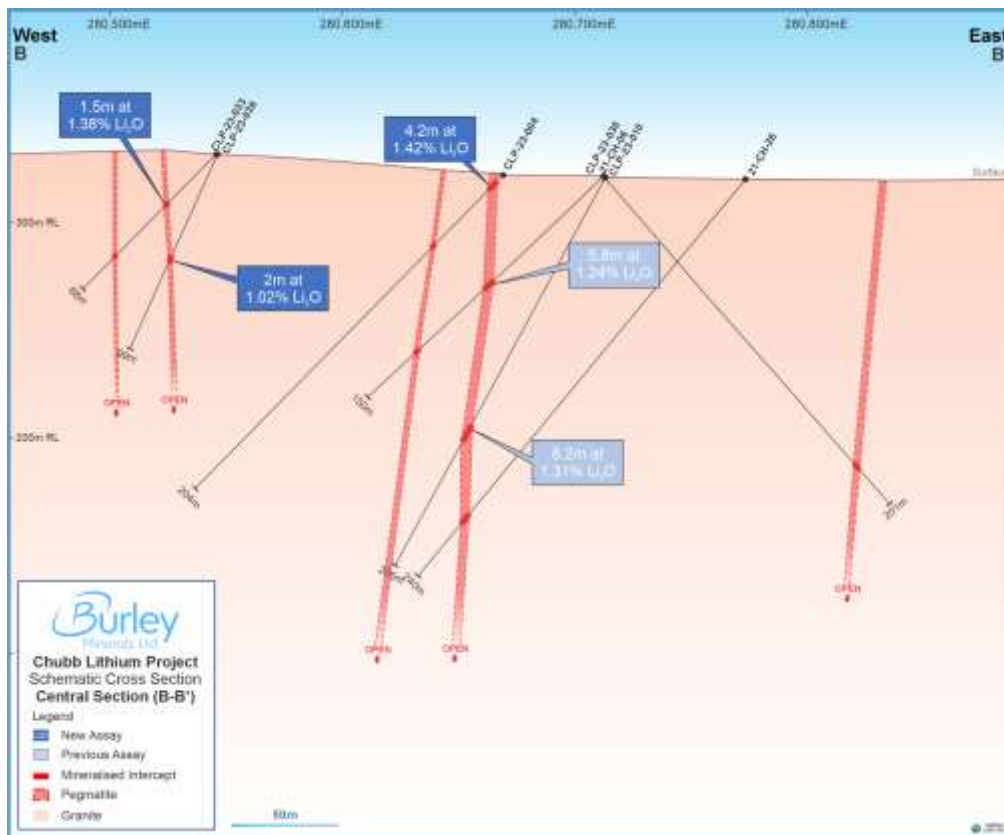


Figure 6. Cross Section B-B' through Chubb Central showing the multiple spodumene bearing dykes. All dykes are open to the south where the Main Dyke has been extended.

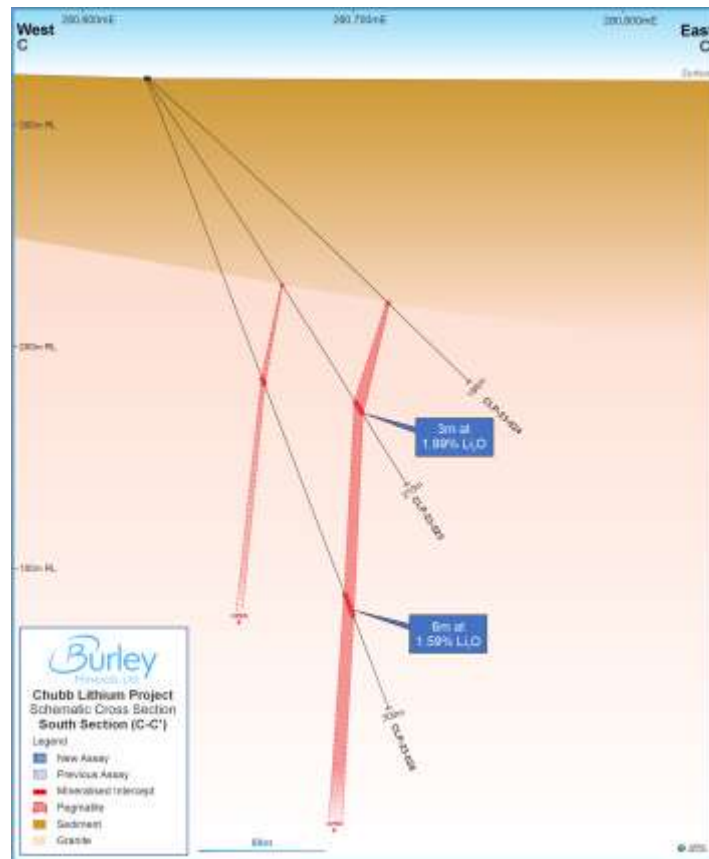


Figure 7. Cross Section C-C' through Chubb Central mineralised zone has extended Main Dyke a further 50m south and remains open to the south.

About Burley Minerals Limited

Burley Minerals Ltd (**ASX: BUR**) is a well-funded, ASX-listed, Perth-based minerals explorer with lithium and iron ore projects, located within the World-Class Tier-1 provinces of Québec, Canada and Western Australia. Burley acquired 100% ownership of the Chubb Lithium Project in Québec, Canada, and the Gascoyne Lithium Projects in Western Australia, in February 2023.

The Chubb Lithium Project is located 25 km north of the mining community of Val d'Or in the heart of the world-class lithium province of Québec, Canada with a total area of 1,509 hectares. The Chubb Project is centred within the Manneville Deformation Corridor, which hosts Canada's only operating lithium mine, the North America Lithium Operation (NAL). The NAL is owned by Sayona Mining Ltd (ASX: SYA) and Piedmont Lithium Inc, with Mineral Resources of 58Mt at 1.23% Li_2O^3 reported, plus a number of other emerging projects including the Authier Lithium Project, with resources of 17Mt at

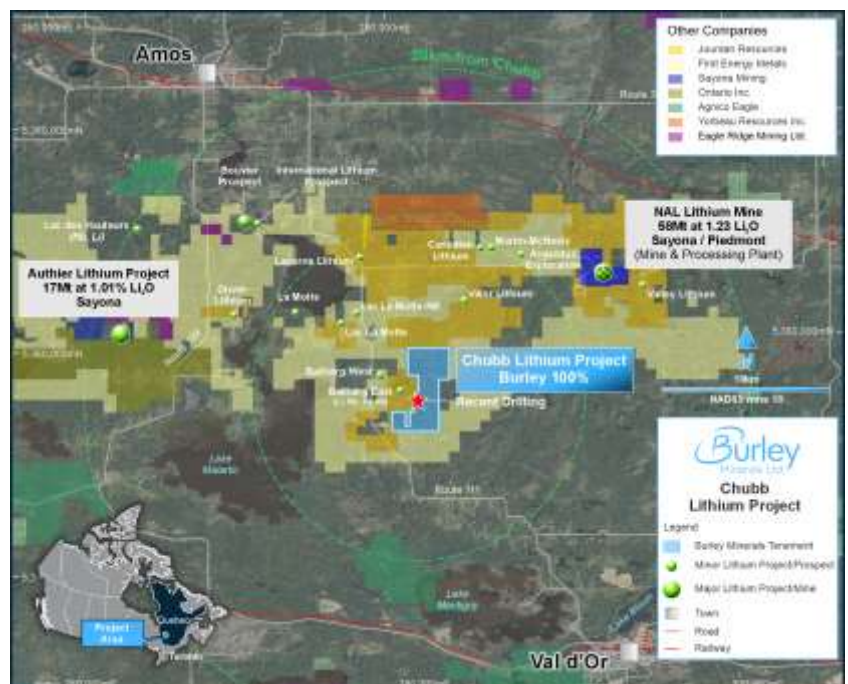


Figure 1. Location map of the Chubb Project showing proximity to the NAL lithium mine and other lithium deposits and prospects.

³ Refer to Sayona Mining's ASX Release dated 14 April 2023

1.01 % Li₂O reported⁴. The recommissioned NAL plant is located 10km north-east of the Chubb Lithium Project, with first production having commenced in the March 2023 Quarter⁵.

Prior to Burley acquiring the Chubb Lithium Project, 43 diamond drill holes for 5,460m of drilling had been completed across the Project, however these have tested only 2 of the 35 Mineral Claims acquired. Burley is well-funded to continue exploration after completing a C\$3.0M 'flow-through' capital raising initiative in May 2023, to fund exploration activities on its Canadian lithium projects.

In Western Australia, Burley also owns a 70% interest in the Yerecoin Iron Project, located approximately 120km northeast of Perth, and which has a JORC 2012 compliant Inferred and Indicated Mineral Resource of 246.7Mt capable of producing a concentrate at >68% Fe⁶.

Burley also has the Cane Bore Prospect (exploration license application) in the world class Hamersley Iron Ore Province. The Cane Bore Prospect has 28kms of remnant outcropping Channel Iron Deposit (CID) mineralisation which on average is 400m wide.

This announcement has been authorised for release by the Board of Directors.

For further information, please contact:

Bryan Dixon

Non-Executive Chairman
Burley Minerals Limited

bryan@burleyminerals.com.au

Stewart McCallion

Managing Director & CEO
Burley Minerals Limited

stewart@burleyminerals.com.au

Alex Cowie

NWR Communications
+61 412 952 610

alexc@nwrcommunications.com.au

⁴ Refer to Sayona Mining's ASX Release dated 14 April 2023.

⁵ Refer to Sayona Mining's ASX Release dated 28 April 2023.

⁶ Refer to Burley Minerals Ltd Prospectus dated 27 May 2021 Section 10 for the Independent Technical Assessment Report.

APPENDIX 1: DRILL HOLE TABLE - ALL INTERVALS ARE DOWN-HOLE INTERVALS.

Table 2: Chubb Central Drill Hole Collar Coordinates for reported holes

Hole-ID	Easting	Northing	RL	Depth	Dip	Azimuth
CLP004	280675	5354584	322	204	-45	248
CLP006	280678	5354458	320	102	-45	68
CLP009	280784	5354704	321	300	-45	248
CLP009a	280785	5354704	321	293	-55	268
CLP011	280543	5354676	334	252	-60	68
CLP012	280610	5354711	333	151	-70	68
CLP024	280624	5354380	321	186	-45	68
CLP025	280624	5354379	321	210	-60	68
CLP026	280678	5354811	329	246	-55	248
CLP027	280570	5354468	323	264	-60	68
CLP028	280624	5354379	321	300	-70	68
CLP030	280719	5354601	321	201	-50	68
CLP031	280540	5354585	335	105	-45	262.5
CLP032	280541	5354585	335	120	-45	68.1
CLP033	280548	5354542	332	88	-45	248
CLP034	280569	5354468	323	86.2	-45	248
CLP036	280549	5354542	332	99	-65	248

Table 3: Table of Chubb Central Significant and Representative Sample Assays

Hole ID	Depth From (m)	Depth To (m)	Interval (m)	Li (ppm)	Li ₂ O (%)	Cs (ppm)	Rb (ppm)	Be (ppm)	Sn (ppm)	Ta (ppm)	Nb (ppm)	Fe (%)	Si (%)
CLP004	6	7	1	9172	1.97	42.5	538	157	3	46.8	102	0.75	30
CLP004	7	8	1	6351	1.37	71.3	672	307	3	54.8	103	0.63	30
CLP004	8	9	1	5157	1.11	114	2424	214	2	23.5	65	0.51	30
CLP004	9	10.05	1.05	5846	1.26	59.3	497	206	4	53.5	86	0.87	30
CLP009	207.46	208	0.54	8539	1.84	53.9	161	151	4	9.5	8	0.65	30
CLP009	208	209.16	1.16	14471	3.12	65.2	103	144	8	20.3	24	0.96	30
CLP009a	28.93	30	1.07	4449	0.96	127	1620	135	5	59.3	61	0.72	30
CLP012	59	60	1	7809	1.68	111	1587	163	9	45.3	80	0.91	30
CLP025	169	170	1	7691	1.66	151	1898	390	5	15.2	31	0.83	30
CLP025	170	171	1	8700	1.87	119	1316	163	5	36.9	43	0.81	30
CLP025	171	172	1	11378	2.45	118	1676	140	5	12.4	24	0.99	30
CLP027	222	223	1	9978	2.15	246	1922	210	5	334	247	0.93	30
CLP027	223	224	1	7728	1.66	421	4911	21	7	15.5	15	0.85	26.8
CLP027	224	225	1	5999	1.29	234	2180	137	3	16	14	0.54	30
CLP027	225	226	1	6315	1.36	350	3090	76	2	31	24	0.53	30
CLP027	226	227	1	4363	0.94	328	2827	329	2	32.3	32	0.53	30
CLP027	227	228	1	3866	0.83	213	2097	126	3	14.9	17	0.52	30
CLP028	251	252	1	6920	1.49	402	2821	115	2	48.9	26	0.51	30
CLP028	252	253	1	8167	1.76	525	3659	92	3	18.2	13	0.48	30
CLP028	253	254	1	8156	1.76	483	1615	483	2	38.1	25	0.6	30
CLP028	254	255	1	9549	2.06	718	3113	552	3	51	22	0.54	30
CLP028	255	256	1	10155	2.19	375	908	619	5	53.5	35	0.69	30
CLP028	256	257	1	4415	0.95	118	483	148	2	64.8	54	0.45	30
CLP031	67	68	1	4344	0.93	86.3	1822	190	2	69.8	148	0.69	30
CLP032	89	90	1	7681	1.65	76.6	1375	284	3	15.5	41	0.89	30
CLP032	90	91	1	5234	1.13	77.9	1722	172	3	24.4	51	0.72	30

Table 4: Chubb North Drill Hole Collar Coordinates for reported holes

Hole ID	Easting	Northing	RL	Depth	Dip	Azimuth
CLP047	281083	5358717	321	120	-60	70
CLP048	281083	5358717	321	138	-60	70
CLP049	280932	5358945	337	201	-45	0
CLP050	281083	5358717	321	219	-45	0

Competent Person's Statement

The information in this announcement that relates to lithium and LCT pegmatite exploration results is based on and fairly represents information and supporting documentation supplied to Mr David Crook, who is a member of The Australasian Institute of Mining and Metallurgy (AusIMM) and the Australian Institute of Geoscientists (AIG). Mr Crook is a consultant to Burley Minerals and is a non-executive Director of the Company. Mr Crook has sufficient experience relevant to the style of mineralisation under consideration and to the activity which he is undertaking to qualify as a Competent Person as defined in the 2012 edition of the "Australasian Code for Reporting of Exploration Results, Mineral Resources and Ore Reserves". Mr Crook consents to the inclusion in this announcement of the matters based on this information in the form and context in which it appears.

The Yerecoin Main and South Mineral Resource Estimate was reported in 2014 under the 2012 Edition of the "Australasian Code for Reporting of Exploration Results, Mineral Resources and Ore Reserves". The Mineral Resource Estimate was detailed in refer to Prospectus dated 27 May 2021 Section 10 for the Independent Technical Assessment Report. Burley confirms that it is not aware of any new information or data that materially affects the information included in this announcement regarding the mineral resources and that all material assumptions and technical parameters underpinning the estimates continue to apply and have not materially changed.

Caution Regarding Forward-Looking Information

This announcement may include forward-looking statements regarding Burley Mineral Limited. Forward-looking statements are only predictions and are subject to risks, uncertainties and assumptions which are outside the control of Burley. Actual values, results or events may be materially different to those expressed or implied in this document. Given these uncertainties, recipients are cautioned not to place reliance on forward looking statements. Any forward-looking statements in this document speak only at the date of issue of this ASX Release. Subject to any continuing obligations under applicable law, Burley does not undertake any obligation to update or revise any information or any of the forward-looking statements in this announcement or any changes in events, conditions, or circumstances on which any such forward looking statement is based.



JORC Code, 2012 Edition – Table 1 report

Section 1 Sampling Techniques and Data

(Criteria in this section apply to all succeeding sections.)

Criteria	JORC Code explanation	Commentary
Criteria	<i>JORC Code explanation</i>	<i>Commentary</i>
Sampling techniques	<p><i>Nature and quality of sampling (eg cut channels, random chips, or specific specialised industry standard measurement tools appropriate to the minerals under investigation, such as down hole gamma sondes, or handheld XRF instruments, etc). These examples should not be taken as limiting the broad meaning of sampling.</i></p> <p><i>Include reference to measures taken to ensure sample representivity and the appropriate calibration of any measurement tools or systems used.</i></p> <p><i>Aspects of the determination of mineralisation that are Material to the Public Report.</i></p> <p><i>In cases where ‘industry standard’ work has been done this would be relatively simple (eg ‘reverse circulation drilling was used to obtain 1 m samples from which 3 kg was pulverised to produce a 30 g charge for fire assay’). In other cases more explanation may be required, such as where there is coarse gold that has inherent sampling problems. Unusual commodities or mineralisation types (eg submarine nodules) may warrant disclosure of detailed information.</i></p>	<ul style="list-style-type: none"> • <i>NQ core samples from holes drilled from surface</i> • <i>LIBs and pXRF mineral vectors were collected from diamond core.</i> • <i>QAQC comprising suitable standards (Certified Reference Material “CRM”) and sourced blank material were inserted at nominal rates inside the sample sequence. The standards reported within acceptable limits.</i> • <i>Samples are considered ‘fit for purpose’, being to detect anomalous metal elements.</i> • <i>Half core samples dictated by geology vary in length and weight up to a maximum sample length of 1.2m.</i>
Drilling techniques	<p><i>Drill type (eg core, reverse circulation, open-hole hammer, rotary air blast, auger, Bangka, sonic, etc) and details (eg core diameter, triple or standard tube, depth of diamond tails, face-sampling bit or other type, whether core is oriented and if so, by what method, etc).</i></p>	<ul style="list-style-type: none"> • <i>Standard surface diamond drilling to recover NQ size core.</i> • <i>Core was orientated and surveyed downhole at 50m intervals.</i>
Drill sample recovery	<p><i>Method of recording and assessing core and chip sample recoveries and results assessed.</i></p> <p><i>Measures taken to maximise sample recovery and ensure representative nature of the samples.</i></p> <p><i>Whether a relationship exists between sample recovery and grade and whether sample bias may have occurred due to preferential loss/gain of fine/coarse material.</i></p>	<ul style="list-style-type: none"> • <i>Diamond core recovery was measured for each run and calculated as a percentage of the drilled interval.</i> • <i>Core recovery was generally high with fresh rock from near surface</i> • <i>Because the sample recoveries are assumed to be high, any possible relationship between sample recovery and grade has not been investigated.</i>

Criteria	JORC Code explanation	Commentary
Logging	<p>Whether core and chip samples have been geologically and geotechnically logged to a level of detail to support appropriate Mineral Resource estimation, mining studies and metallurgical studies.</p> <p>Whether logging is qualitative or quantitative in nature. Core (or costean, channel, etc) photography.</p> <p>The total length and percentage of the relevant intersections logged.</p>	<ul style="list-style-type: none"> • All core was geologically logged for lithology and mineralisation which has been recorded in the geology table of the drillhole database. • Geological logging is of qualitative and descriptive in nature. • The entire length of each hole has been geologically logged and photographed.
Sub-sampling techniques and sample preparation	<p>If core, whether cut or sawn and whether quarter, half or all core taken.</p> <p>If non-core, whether riffled, tube sampled, rotary split, etc and whether sampled wet or dry.</p> <p>For all sample types, the nature, quality and appropriateness of the sample preparation technique.</p> <p>Quality control procedures adopted for all sub-sampling stages to maximise representivity of samples.</p> <p>Measures taken to ensure that the sampling is representative of the in situ material collected, including for instance results for field duplicate/second-half sampling.</p> <p>Whether sample sizes are appropriate to the grain size of the material being sampled.</p>	<ul style="list-style-type: none"> • Core was cut in half by diamond saw with one half retained as reference and one half sent for assay. • All core processing was carried out by Service provider, MNG and stored in their facility. • All samples were submitted to SGS and prepared according to the PREP-89 protocol which involves, core to be crushed to 75% passing 2mm, riffle split off 250g, then pulverized and split to better than 85% passing 75 microns. • QA/QC programme has CRMs and blanks inserted into the analytical sequence at the rate of 5 per hundred.
Quality of assay data and laboratory tests	<p>The nature, quality and appropriateness of the assaying and laboratory procedures used and whether the technique is considered partial or total.</p> <p>For geophysical tools, spectrometers, handheld XRF instruments, etc, the parameters used in determining the analysis including instrument make and model, reading times, calibrations factors applied and their derivation, etc.</p> <p>Nature of quality control procedures adopted (eg standards, blanks, duplicates, external laboratory checks) and whether acceptable levels of accuracy (ie lack of bias) and precision have been established.</p>	<ul style="list-style-type: none"> • All samples were submitted for a 56-element suite to SGS laboratory having both ISO9001:2008 and ISO/IEC 17025 accreditation. • SGS protocol GE_ICM91A50 was used for core and is specific to lithium testing and associated elements in Pegmatites, as such it is considered fit for purpose. Over limit Si values were obtained using XRF72 borate fusion. • No geophysical tools, handheld XRF or spectrometers were used. • Internal SGS QAQC passed internal protocol and inserted standards were generally within 1STD. All blanks remained under detection limits confirming no contamination was introduced through the laboratory process.
Verification of sampling and assaying	<p>The verification of significant intersections by either independent or alternative company personnel.</p> <p>The use of twinned holes.</p> <p>Documentation of primary data, data entry procedures, data verification, data storage</p>	<ul style="list-style-type: none"> • Verification of the exploration processes and significant drill intersections table was undertaken by David Crook, a non-executive director of the Company and the Competent Person for this report. • No holes were twinned at this stage of drilling. • There were no other adjustments made to the data, other than to convert Li to Li₂O

Criteria	JORC Code explanation	Commentary
	<p>(physical and electronic) protocols.</p> <p>Discuss any adjustment to assay data.</p>	<p>using a factor of 2.1527.</p>
Location of data points	<p>Accuracy and quality of surveys used to locate drill holes (collar and down-hole surveys), trenches, mine workings and other locations used in Mineral Resource estimation.</p> <p>Specification of the grid system used.</p> <p>Quality and adequacy of topographic control.</p>	<ul style="list-style-type: none"> • The hole collars were positioned using handheld GPS • The rock chip sample and pXRF mineral vectors locations were positioned using handheld GPS. • Each location has been marked in the field by a wood pole and a follow up survey is intended using an RTK system. • The grid system used is UTM NAD83 (zone 18)
Data spacing and distribution	<p>Data spacing for reporting of Exploration Results.</p> <p>Whether the data spacing and distribution is sufficient to establish the degree of geological and grade continuity appropriate for the Mineral Resource and Ore Reserve estimation procedure(s) and classifications applied.</p> <p>Whether sample compositing has been applied.</p>	<ul style="list-style-type: none"> • Drill holes are spaced approximately 50m in section and plan. • Sample and pXRF mineral vectors spacing is appropriate for regional (Quebec) exploration results. • No resource estimation has been made. • No sample compositing was applied.
Orientation of data in relation to geological structure	<p>Whether the orientation of sampling achieves unbiased sampling of possible structures and the extent to which this is known, considering the deposit type.</p> <p>If the relationship between the drilling orientation and the orientation of key mineralised structures is considered to have introduced a sampling bias, this should be assessed and reported if material.</p>	<ul style="list-style-type: none"> • Drill lines are orientated approximately at right angles to the current interpreted strike of the targeted mineralization. • No bias is considered to have been introduced by the existing sampling orientation
Sample security	<p>The measures taken to ensure sample security.</p>	<ul style="list-style-type: none"> • Samples were bagged and sealed on site, sample bags were grouped by batched of 15 -20 and put into shipping bags that were again sealed and transported directly to SGS lab by MNG technicians.
Audits or reviews	<p>The results of any audits or reviews of sampling techniques and data.</p>	<ul style="list-style-type: none"> • Sampling and assaying techniques are considered to be industry standard. • At this stage of exploration, no external audits or reviews have been undertaken.

Section 2 Reporting of Exploration Results

(Criteria listed in the preceding section also apply to this section.)

Criteria	JORC Code explanation	Commentary
Mineral tenement and land tenure status	<p>Type, reference name/number, location and ownership including agreements or material issues with third parties such as joint ventures, partnerships, overriding royalties, native title interests, historical sites, wilderness or national park and environmental settings.</p> <p>The security of the tenure held at the time of reporting along with any known impediments to obtaining a license to operate in the area.</p>	<p>The drill hole data reported within this announcement is from the Chubb property is 100% owned by Lithium Chubb Inc. a 100% owned subsidiary of Burley Minerals Ltd..</p> <p>The Chubb property is made up of 35 claims in one block totaling 1,509ha, located in NTS 32c05, in La Corne and Vassan townships, 28km NNW of Val-d'Or</p> <p>A 2.5% Net Smelter Royalty over the Chubb Lithium Project.</p> <p>First nation title claims sit with the Abitibi Winni First Nation Council.</p>
Exploration done by other parties	Acknowledgment and appraisal of exploration by other parties.	43 holes for 5,722m has previously been completed at the Chubb Central Prospect. No previous drilling has been completed outside of Chubb Central. All material data has been previously reported.
Geology	Deposit type, geological setting and style of mineralisation.	<p>Pegmatites of the Chubb Project are of spodumene bearing quartz-albite LCT (Lithium Caesium Tantalum) pegmatite family of rocks. The pegmatite dykes have intruded into a suite of mafic and felsic rocks.</p> <p>Outcropping pegmatites have been identified at the Chubb North prospect which show fertility indicators consistent with LCT (Lithium Cesium Tantalum) pegmatite family of rocks.</p>
Drill hole Information	<p>A summary of all information material to the understanding of the exploration results including a tabulation of the following information for all Material drill holes:</p> <p>easting and northing of the drill hole collar</p> <p>elevation or RL (Reduced Level – elevation above sea level in metres) of the drill hole collar</p> <p>dip and azimuth of the hole</p> <p>down hole length and interception depth</p> <p>hole length.</p> <p>If the exclusion of this information is justified on the basis that the information is not Material and this exclusion does not detract from the understanding of the report, the Competent Person should clearly explain why this is the case.</p>	<p>Refer to Appendix 1 of this announcement.</p> <p>Refer also to Appendix 1 of the announcement dated 3 July 2023.</p>
Data aggregation methods	In reporting Exploration Results, weighting averaging techniques, maximum and/or minimum grade truncations (eg cutting of high grades) and cut-off grades are usually Material and should be stated.	<p>All assay results are reported as received from SGS laboratories except Li_2O, where a stoichiometric conversion factor of 2.1527 has been applied to convert Li to Li_2O</p> <p>No metal equivalent values have been reported.</p>

Criteria	JORC Code explanation	Commentary
	<p>Where aggregate intercepts incorporate short lengths of high grade results and longer lengths of low grade results, the procedure used for such aggregation should be stated and some typical examples of such aggregations should be shown in detail.</p> <p>The assumptions used for any reporting of metal equivalent values should be clearly stated.</p>	
Relationship between mineralisation widths and intercept lengths	<p>These relationships are particularly important in the reporting of Exploration Results.</p> <p>If the geometry of the mineralisation with respect to the drill hole angle is known, its nature should be reported.</p> <p>If it is not known and only the down hole lengths are reported, there should be a clear statement to this effect (eg 'down hole length, true width not known').</p>	<p>Downhole lengths are reported in Appendix 1.</p> <p>Current interpretation suggests the pegmatite dykes are sub vertical.</p>
Diagrams	<p>Appropriate maps and sections (with scales) and tabulations of intercepts should be included for any significant discovery being reported These should include, but not be limited to a plan view of drill hole collar locations and appropriate sectional views.</p>	<p>Refer to maps in this report.</p>
Balanced reporting	<p>Where comprehensive reporting of all Exploration Results is not practicable, representative reporting of both low and high grades and/or widths should be practiced to avoid misleading reporting of Exploration Results.</p>	<p>Comprehensive reporting of drilling results have been provided in Appendix 1.</p>
Other substantive exploration data	<p>Other exploration data, if meaningful and material, should be reported including (but not limited to): geological observations; geophysical survey results; geochemical survey results; bulk samples – size and method of treatment; metallurgical test results; bulk density, groundwater, geotechnical and rock characteristics; potential deleterious or contaminating substances.</p>	<p>All meaningful and material exploration data has been reported.</p>
Further work	<p>The nature and scale of planned further work (eg tests for lateral extensions or depth extensions or large-scale step-out drilling).</p> <p>Diagrams clearly highlighting the areas of possible extensions, including the main geological interpretations and future drilling areas, provided this information is not commercially sensitive.</p>	<p>Work that is currently underway or remains outstanding includes:</p> <ul style="list-style-type: none"> • Additional diamond core assay results from the outstanding from both Chubb Central and Chubb North. • Ongoing field mapping of the Chubb tenure. • Initial metallurgical testwork programme well advanced at Chubb Central • Follow up drilling planned at both Chubb Central and Chubb North.