

ASX Release

20 June 2024

RUSHWORTH GROWLERS HILL DRILLING RESULTS

Dart Mining NL (ASX:DTM) (“Dart Mining” or “the Company”) has completed Phase 1 drilling at the Growlers Hill Prospect within the companies 100% owned Rushworth Gold tenement package. All drillhole logging, sampling, results and interpretation are provided in this progress update.

The intersections from the Growlers Hill drilling to date clearly indicate multiple mineralised structures exist within the strong North-South Growlers Hill fault channel, further drilling is planned to target high grade gold shoots within these structures.

HIGHLIGHTS INCLUDE:

- 868m of drilling completed which has confirmed interpreted structural architecture of the Growlers Hill Fault.
- Final results have been received for all holes, with highlight results including:
 - GHDD001 – 2.5m @ 0.63g/t Au from 104.5m inc. **0.5m @ 1.9g/t Au**
 - GHDD002 – 3.0m @ 0.42g/t Au from 57m inc. **0.5m @ 1.5g/t Au**
 - GHDD003 – 4.0m @ 0.44g/t Au from 116.7m inc. **0.35m @ 0.99g/t Au**
 - GHDD008 – 2.45m @ 0.43g/t Au from 113.5m
- Gold intersections appeared on both the interpreted Growlers Hill Fault as mined on surface and a deeper secondary structure as shown in Figures 1 – 5 below.
- Interpretation indicates that several structures are present at depth below the surface workings in a wide zone of structural deformation focused around larger, sub vertical North-South orientated structures with smaller shallow dipping structures interlinking.
- Phase 2 drilling has commenced with 472m of a planned 1,620m completed at Star of the West, Henry Horne (formally known as Star of the West West) and Shellback Reef shown in Figure 6.

Chairman, James Chirside commented:

“Dart have commenced the first systematic, field wide drill evaluation at Rushworth aimed at better understanding the structural controls on the high-grade gold shoots formerly mined on the goldfield. This will help us to refine our mineralisation models for these orogenic gold deposits and better target future drilling which is ongoing. Our target is structurally hosted high-grade zones similar to the Fosterville mine, 45km away, however Rushworth has its own characteristics and we are building our understanding of these with the ongoing drilling.”

Drilling at Growlers Hill has confirmed the position at depth of gold bearing structures mined from surface at Growlers Hill. Drilling intersected multiple sub-vertical North-South orientated structures with low angle North dipping structures linking between them. Drill core and assays demonstrate a strong mineralised fault structure below and adjacent to the known historic workings providing ample encouragement for follow-up testing.

DRILLING RESULTS DISCUSSION

Drill testing of the Growlers Hill Reef aimed to test the structural controls on mineralisation historically mined at surface, and at depth to ~100m from the Growlers Reef Shaft.

Drilling at Growlers Hill has confirmed the overall structural architecture and position at depth of the structures exploited at surface. Drilling intersected multiple sub-vertical (~80 degrees to the West) North-South orientated structures with shallow North dipping structures linking between the major structures.

Lithology intersected was classic Central Victorian turbidite facies rocks, with interbedded sandstone and shales exhibiting clear younging indicators of graded beds, and flame structures. Younging direction and bedding to cleavage relationships show the lithology intersected is as expected, with east-west orientated, south dipping bedding indicating the drilling intersected the Growlers Hill faults as they break across the southern limb of an anticline. Drilling showed evidence that more carbon rich shales exist within the stratigraphy at Rushworth, an important addition to destabilise the mineralising fluid and promote deposition of Gold. Bedding parallel veins were observed, with several small bedding parallel laminated quartz veins also present, providing additional future targeting options as they approach the anticline fold closure.

The Southern Drillholes (GHDD003 & GHDD004 shown in Figure 2, GHDD007 & GHDD008 shown in Figure 3) intersected a shallow mineralised structure before intersecting the main interpreted Growlers Hill Structure at depth. The main structure has a significant impact on the local weathering of rocks indicating a significant impact on the local fluid movement, however, this structure was only weakly mineralised over a narrow width. GHDD003 intersected a footwall structure below the Growlers Hill Fault which exhibited some width of disseminated sulphide mineralisation. GHDD007 did not intersect the structures after encountering drilling difficulties and being abandoned before target depth.

The Northern Drillholes (GHDD001 and GHDD002 shown in Figures 1, 4 & 5) intersected mineralised structures in both the hangingwall and footwall of the main Growlers Hill Structure, as well as the narrow low-grade intersection of the main Growlers Hill Structure. GHDD001 (Figure 4) intersected 2.5m @ 0.6g/t Au at 104.5m from a very wide zone of broken ground and low density stockwork veining from approximately 89m down hole to 120m depth. GHDD002 (Figure 5) intersected 3m @ 0.4g/t Au at 55m (Figure 5) from a series of veins cross cutting bedding, with apparent sulphide pitting in slightly weathered sandstone, with the interpreted Growlers Fault further downhole at 89m depth. Both zones from GHDD001 & GHDD002 show a significant amount of alteration, with iron staining, chlorite and sericite surrounding most veins.

Drilling has highlighted that the Growlers Hill Reef mined historically is likely a combination of several structures, with historic mining likely exploiting dilatational zones where the major structures intersected or bifurcated. Evidence for this can be seen in the en echelon shape of the surface workings, evident in Lidar images, just to the north of the planned holes GHDD005 and GHDD006 shown in Figure 1.

Results to date indicate that the wider Growlers Hill region is exhibiting encouraging widths and grades of gold mineralisation across several structures that warrants follow up drilling. The company has been waiting on the results before committing to drilling planned holes GHDD005 & GHDD006 in the centre of the Growlers Hill region. With the encouraging results received from the wider Growlers region indicating potential for multiple mineralised structures in close proximity, the company intends to continue to explore the prospect for the ideal structural setting, starting with GHDD005 & GHDD006 down plunge of the en echelon shaped zone identified in the surface workings.

RUSHWORTH PHASE 2 DRILLING

Phase 2 drilling is progressing well with 472m drilled across the Star of the West, Henry Horne and Shellback prospects, from a planned 1,630m.

Drilling targeted a North-South orientated structure to the western boundary of the Star of the West prospect. 3 short drillholes were drilled along strike from the surface workings, however very limited structure was identified in the drilling.

Drilling continued further West to the Henry Horne prospect (formally reported as Star of the West West). Drilling progressed well before intersecting an interpreted large-scale East-West structure where water return was lost which limited drilling progress and resulted in the abandonment of the planned drilling through the structure. The planned drilling will be reassessed with alternate hole designs or drilling method to be considered before recommencement. The nature and scale of the structure is encouraging.

Drilling of the Shellback target to the eastern end of the Star of the West prospect is targeting an east west orientated thrust fault and has intersected several bedding parallel structures with linking tensional veins intersected parallel to the drillhole along 2m to 3m of core. The bedding parallel structures appear to have a significant impact on the weathering profile of the surrounding rocks, with the dominantly fresh rocks surrounding the structure exhibiting significant weathering attributes. Core is being processed for submission to the laboratory.

RUSHWORTH STRUCTURAL ARCHITECTURE

The Rushworth goldfield is focused along a series of regional East-West orientated anticline folds which host shallow historic gold workings along a cumulative strike length of approximately 14km (Figure 2). The major limbs of the anticline also exhibit smaller scale parasitic folding and various changes in bedding strike and dip. Significant North-South orientated structures crosscut and offset East-West bedding and fold hinges along the length of the field.

The East-West orientation of the field is unusual for Victorian Goldfields, which usually trend North-South, due to the added structural complexity of the Rushworth Region being highly influenced by the Lachlan Orocline formation and induced North-South crustal shortening through subduction rollback.

Mineralisation historically exploited at Rushworth concentrated on Alluvial mining before focus shifted to the hard rock source. Mineralisation is dominated by free gold located in quartz veins hosted within sandstone and shale lithologies.

Mineralisation at Rushworth is comprised of three main structural architecture types.

- 1. Thrust hosted Quartz Veins.** Formed during compressional events where folding has accommodated as much crustal shortening as it can, thrust faulting then takes over, utilising planer weakness usually associated with bedding and accommodates further shortening. Structures progress along limbs of folds and when a hinge zone is intersected, the fault structures break across the opposite fold limb introducing dilatational areas and structural complexity of discordant bedding to promote the deposition of gold from the mineralised fluid. This style of mineralisation is common across central Victoria particularly at Fosterville, Bendigo and Ballarat fields.
- 2. North South Veins.** Significant mineralised fault structures crosscut the East-West bedding and thrust hosted quartz veins in a North-South orientation across the Rushworth Goldfield. During the folding and rollback event of the Lachlan Orocline formation, North-South structures would have formed to accommodate the rotation of the upper crust in the region.
- 3. Saddle Reefs.** Some historic workings reported exploiting “Bendigo Style” saddle Reefs where soft shale units deform in a more ductile fashion than the surrounding sandstone units and produce dilatational saddles in the hinge of the fold. This style of deformation and mineralisation is particularly evident and reported in historic texts in the Nuggetty Reef region.

Areas of significant interest for Dart Mining in the Rushworth Goldfield are areas of structural intersections, i.e. where the Thrust Faults which strike parallel to bedding intersect the large-scale North-South Structures. The intersection of major structures provides an increase in structural complexity and opportunity for the further deposition of gold from mineralised fluids. The intersection can also increase levels of mineralisation through introducing more mineralising events.

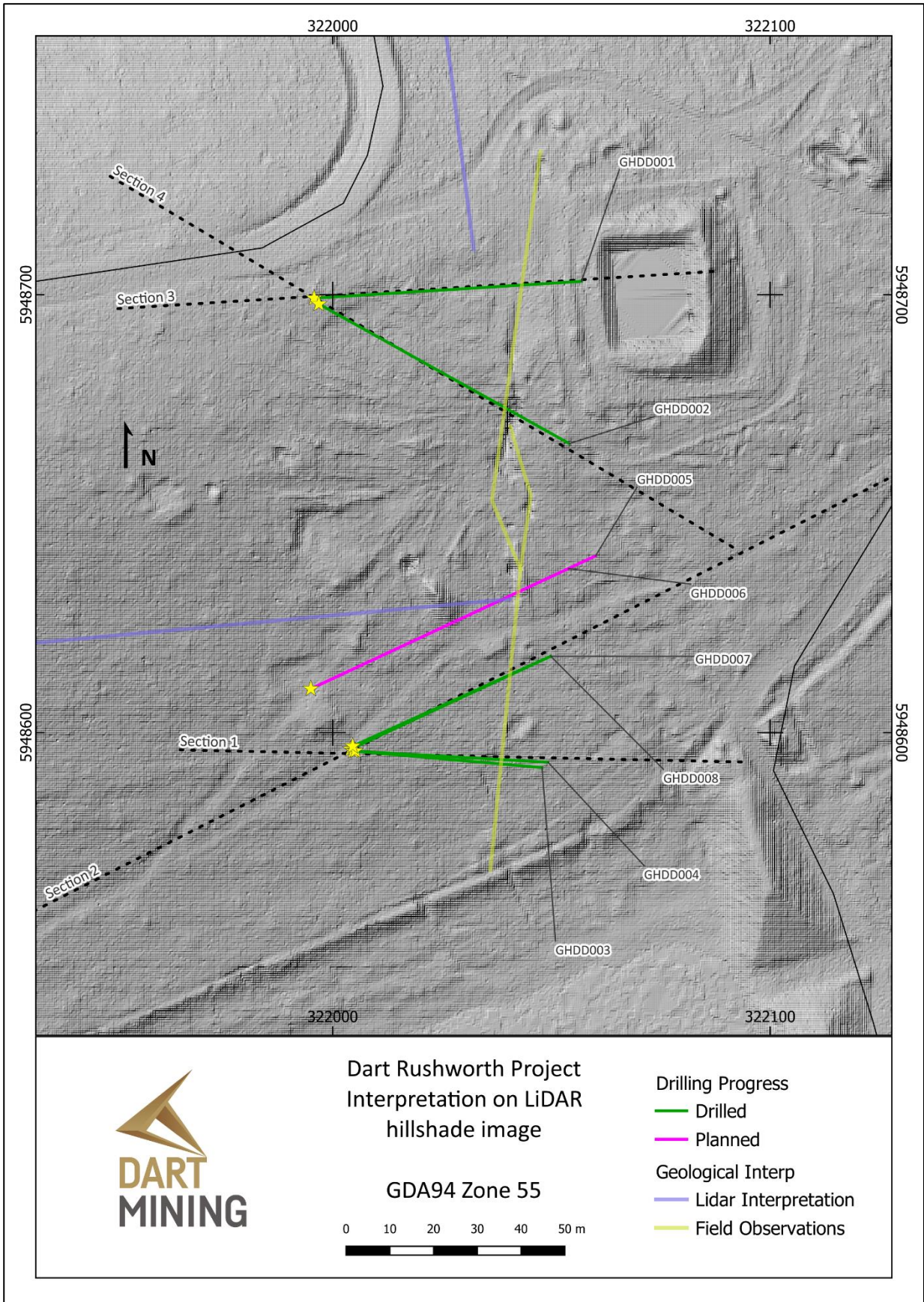


Figure 1: Growlers Hill Drilling Plan

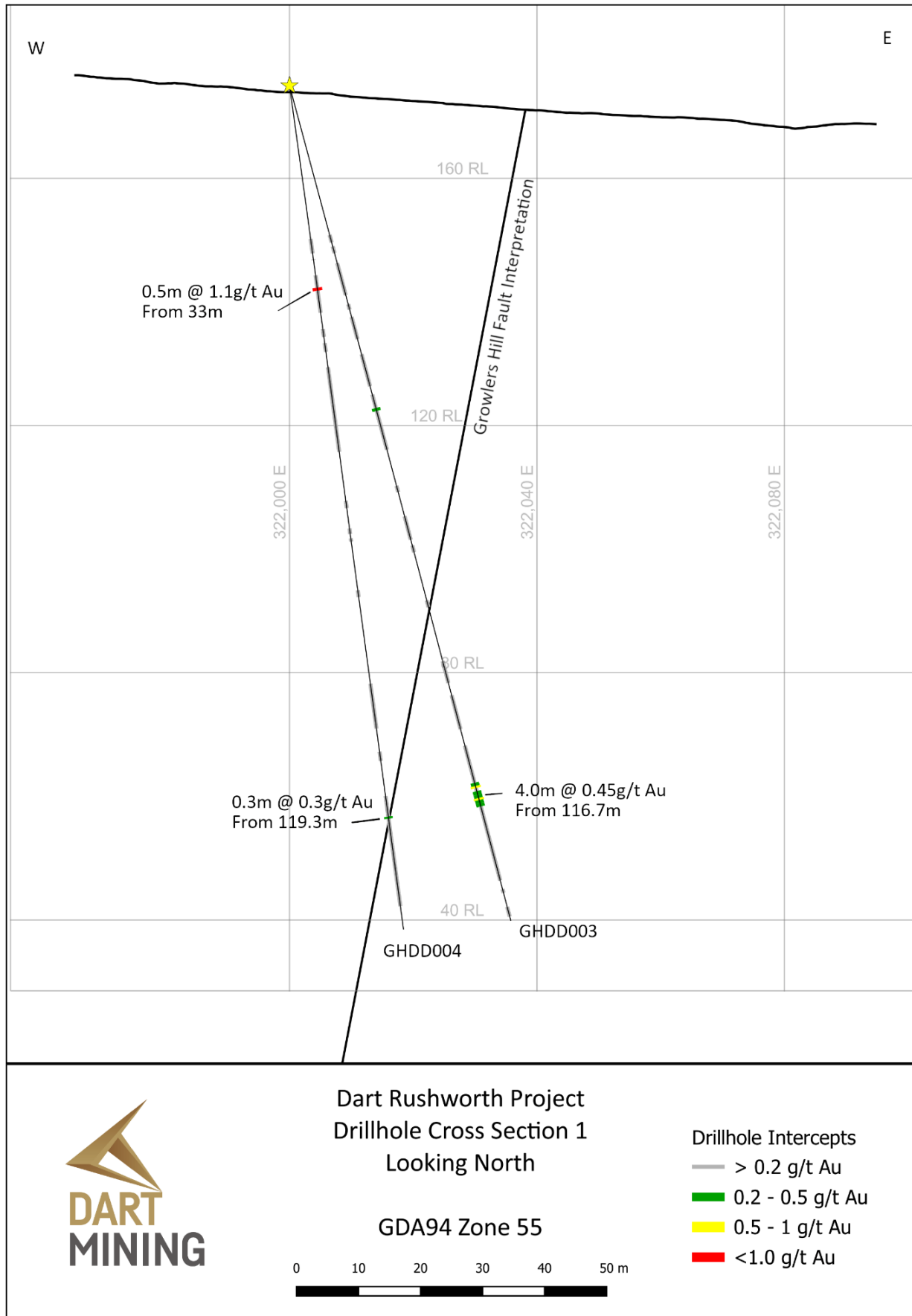


Figure 2: Cross Section 1 looking North showing drillholes GHDD003 and GHDD004

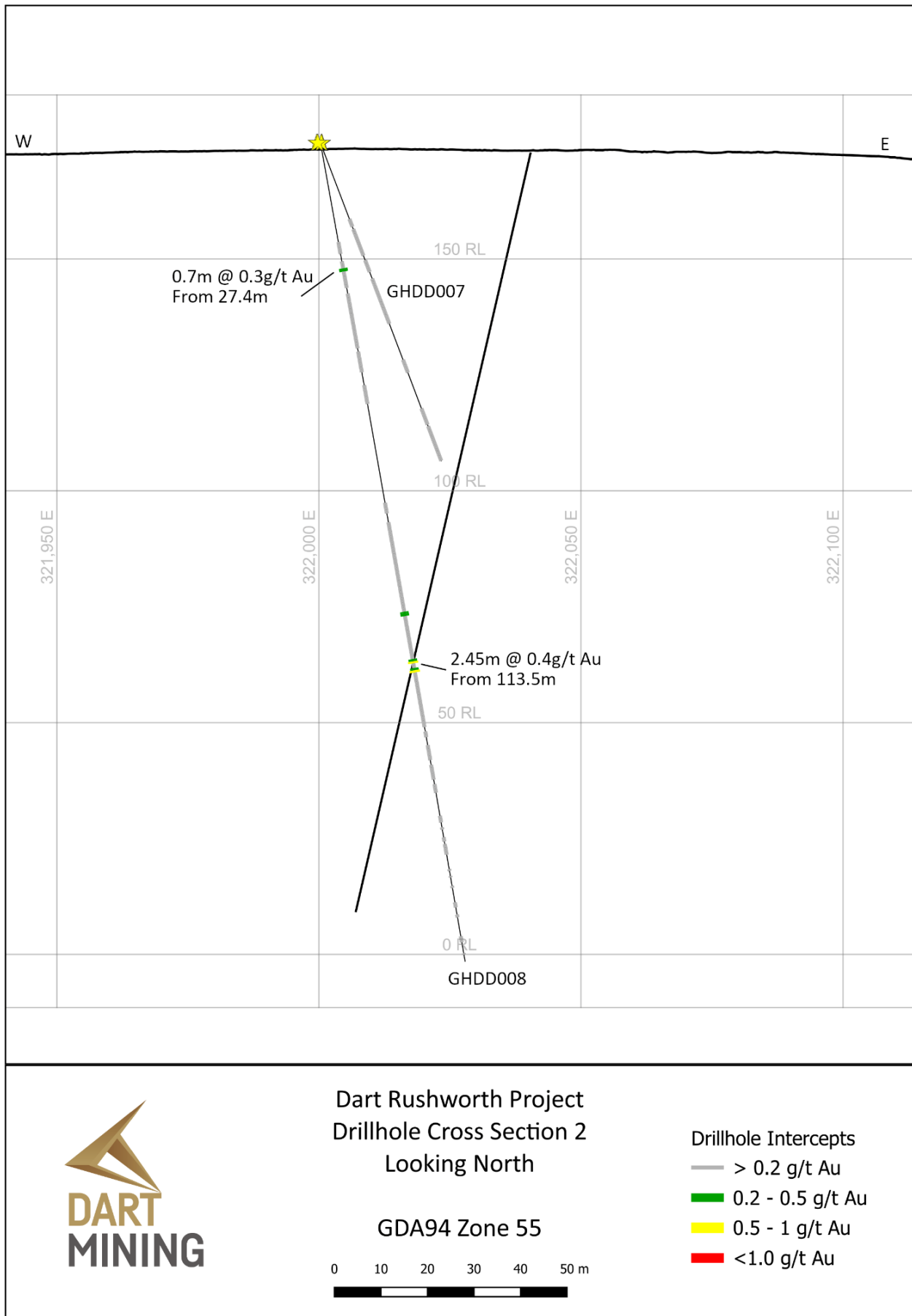


Figure 3: Cross section 2 looking North showing drillholes GHDD007 and GHDD008

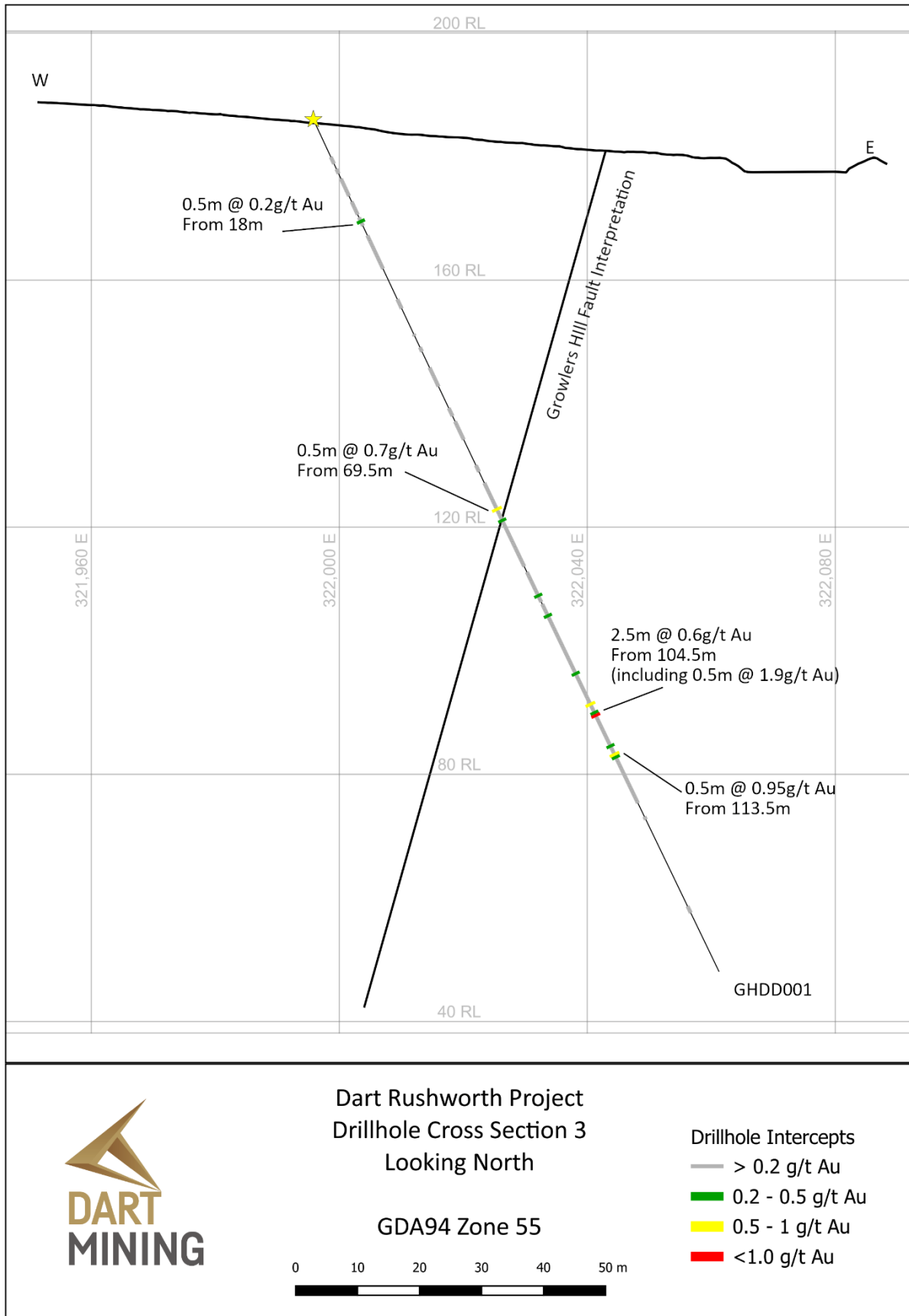


Figure 4: Cross section 3 looking North showing drillhole GHDD001

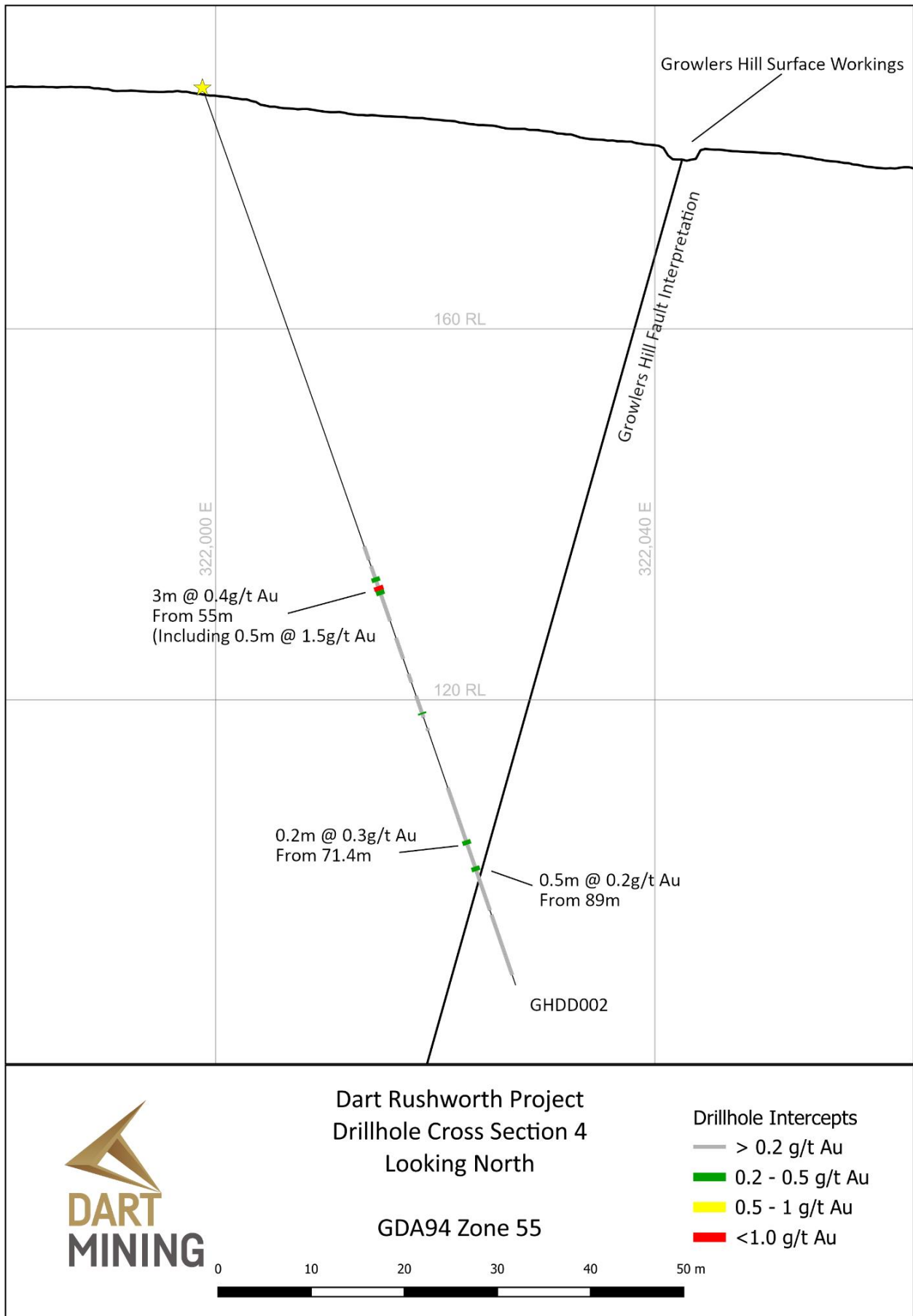


Figure 5: Cross section 4 looking North showing drillhole GHDD002

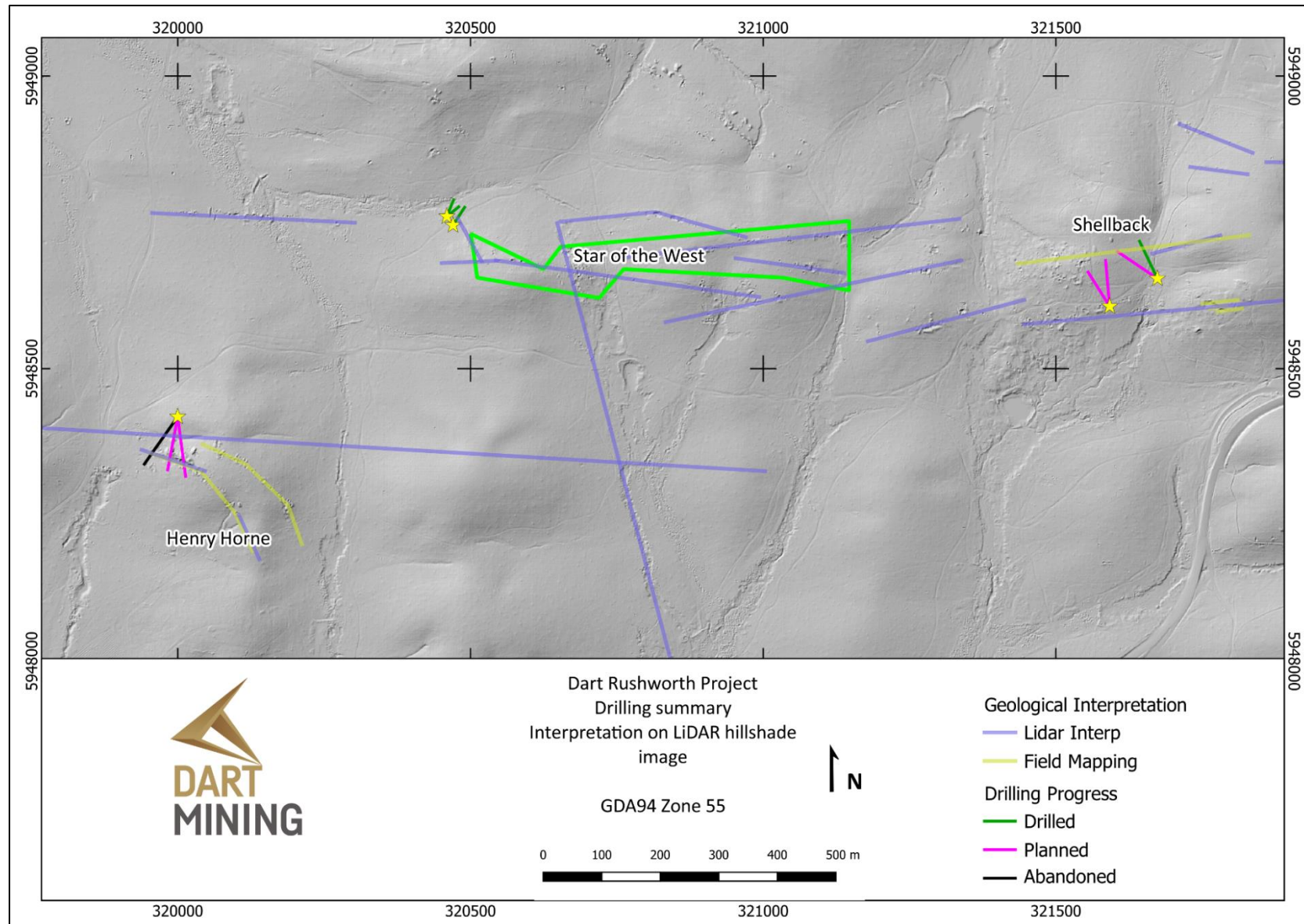


Figure 6: Phase 2 drilling progress, tenement boundary outline in green under application to amalgamate into surrounding EL006016.

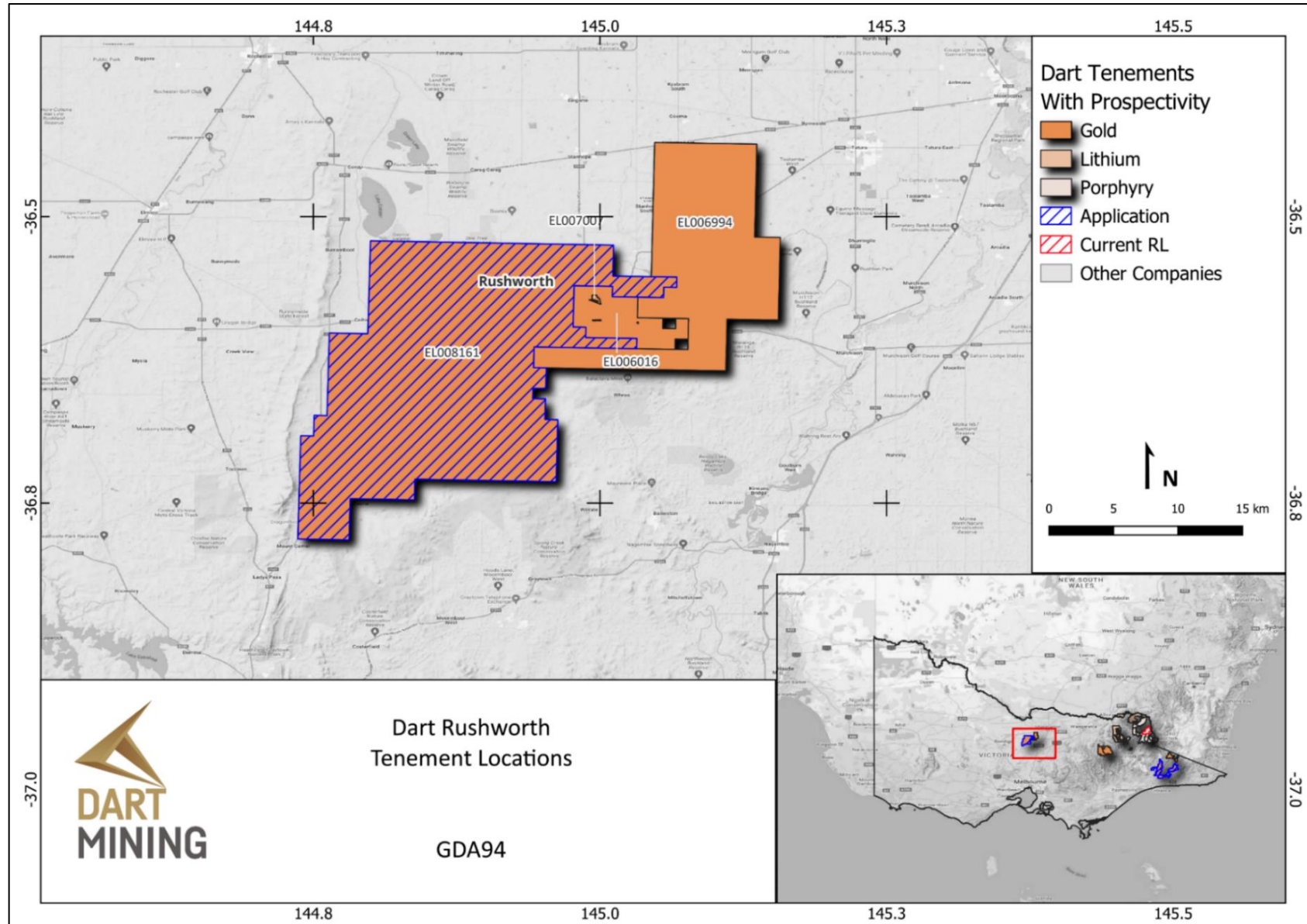


Figure 7: Rushworth Tenement location plan

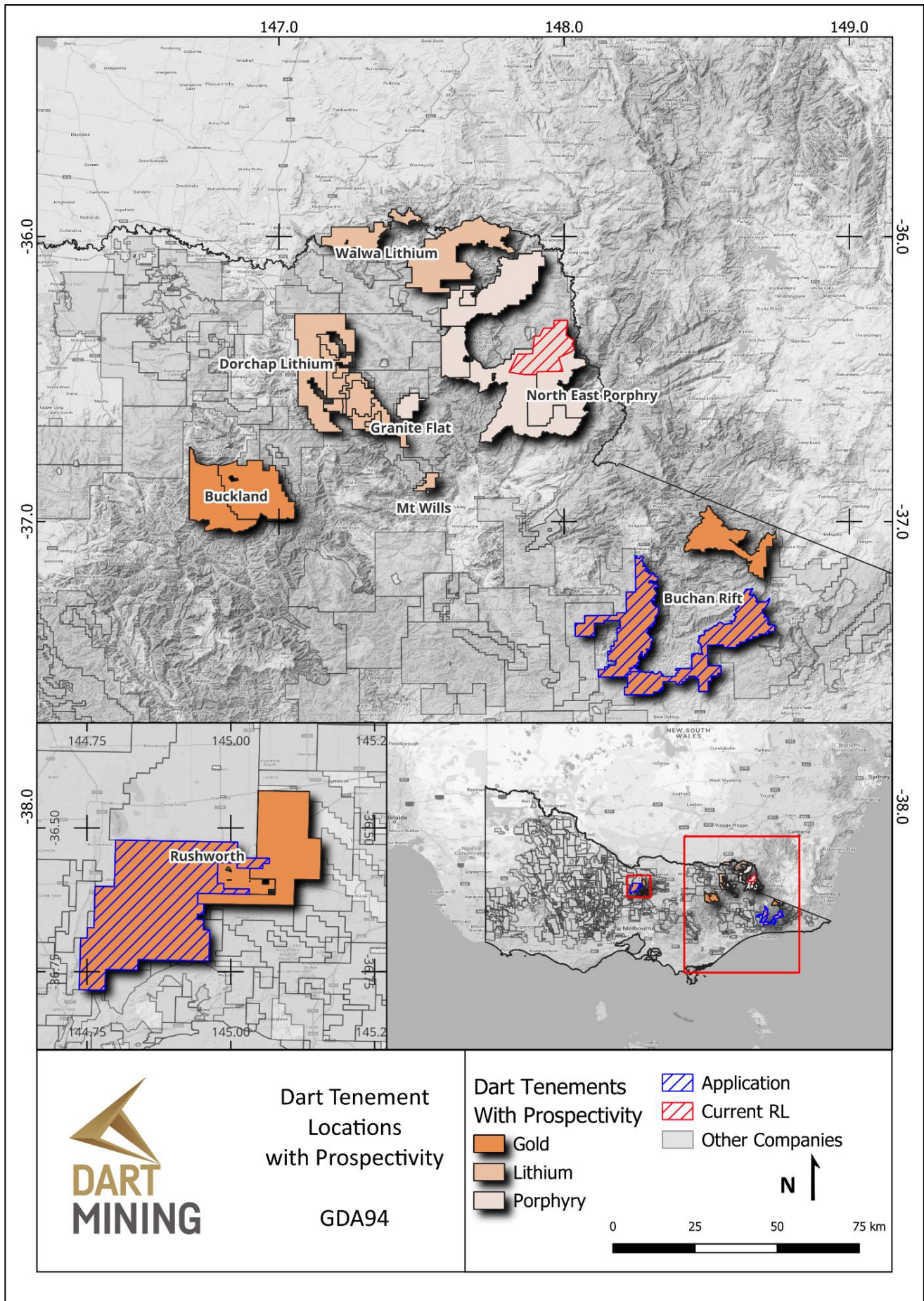


Figure 8: Dart Tenement location plan

Approved for release by the Board of Directors.

For more information contact:

James Chirnside

Managing Director

Dart Mining NL

jchirnside@dartmining.com.au

+61 447 447 613

Aimee Coates

Investor Relations

Dart Mining NL

acoates@dartmining.com.au

About Dart Mining

Dart Mining (ASX: DTM) has the aim of evaluating and developing several historic goldfields, as well as substantiating a new porphyry province in Northeast Victoria. The area is prospective for precious, base, and strategic metals. These include Lithium, Gold, Silver, Copper, Molybdenum, Zinc, Tungsten, Tin, Tantalum, and a host of other important minerals. Dart Mining has built a strategically placed gold exploration footprint in the Central and Northeast regions of Victoria, where historic surface and alluvial gold mining indicates the existence of potentially significant gold endowment.

Competent Person's Statement

The information in this report has been prepared, compiled, and verified by Mr. Owen Greenberger (B.Sc. Geology), a Competent Person who is a Member of the Australian Institute of Geoscientists. Mr. Greenberger is Head of Exploration for Dart Mining. Mr. Greenberger has sufficient experience that is relevant to the style of mineralisation and type of deposits under consideration and to the activity being undertaken to qualify as a competent person as defined in the 2012 Edition of the "Australasian Code for Reporting of Exploration Results, Mineral Resources and Ore Reserves". Mr. Greenberger consents to the inclusion in the report of the matters based on his information in the form and context in which it appears.

Forward-Looking Statement

Certain statements contained in this document constitute forward-looking statements. Forward-looking statements include, but are not limited to, Dart Mining's current expectations, estimates and projections about the industry in which Dart Mining operates, and beliefs and assumptions regarding Dart Mining's future performance. Such forward-looking statements are based on a number of estimates and assumptions made by the Company and its consultants in light of experience, current conditions and expectations of future developments which the Company believes are appropriate in the current circumstances. When used in this document, words such as; "anticipate", "could", "intends", "estimate", "potential", "plan", "seeks", "may", "should", and similar expressions are forward-looking statements. Although Dart Mining believes that its expectations presented in these forward-looking statements are reasonable, such statements are subject to known and unknown risks, uncertainties and other factors, which may cause the actual results, achievements and performance of the Company to be materially different from the future results and achievements expressed or implied by such forward-looking statements. Investors are cautioned that forward-looking information is no guarantee of future performance and accordingly, investors are cautioned not to place undue reliance on these forward-looking statements.

Additional JORC Information

Further details relating and information relating to Dart Mining's Strategic and Technology metals exploration programs can be found in Dart Mining's ASX announcements available on the Company's Website.

APPENDIX 1

TENEMENT STATUS

All tenement applications continue to pass through the approvals process with the tenements remaining in good standing as of the 1st June 2024 (Table 1 – Figure 7 & Figure 8).

Table 1. TENEMENT STATUS

Tenement Number	Name	Tenement Type	Area (km ²) Unless specified	Interest	Location
EL5315	Mitta Mitta ^{4&5}	Exploration Licence	148	100%	NE Victoria
EL006016	Rushworth ⁴	Exploration Licence	32	100%	Central Victoria
EL006277	Empress ⁵	Exploration Licence	87	100%	NE Victoria
EL006300	Eskdale ^{3&5}	Exploration Licence	96	100%	NE Victoria
EL006486	Mt Creek ⁵	Exploration Licence	116	100%	NE Victoria
EL006764	Cravensville	Exploration Licence	170	100%	NE Victoria
EL006861	Buckland	Exploration Licence	414	100%	NE Victoria
EL007007	Union	Exploration Licence	3	100%	Central Victoria
EL006994	Wangara	Exploration Licence	190	100%	Central Victoria
EL007008	Buckland West	Exploration Licence	344	100%	NE Victoria
EL007099	Sandy Creek ⁵	Exploration Licence	437	100%	NE Victoria
EL006865	Dart	Exploration Licence)	567	100%	NE Victoria
EL006866	Cudgewa	Exploration Licence	508	100%	NE Victoria
EL007170	Berringama	Exploration Licence	27	100%	NE Victoria
EL007430	Buchan	<i>EL (Application)</i>	546	100%	Gippsland
EL007435	Goonerah	<i>EL (Application)</i>	587	100%	Gippsland
EL008161	Colbinannin	<i>EL (Application)</i>	458	100%	Central Victoria
EL007425	Deddick	Exploration Licence	341	100%	Gippsland
EL007428	Boebuck	Exploration Licence	355	100%	NE Victoria
EL007426	Walwa	Exploration Licence	499	100%	NE Victoria
EL007754	Tallandoon ⁵	Exploration Licence	88	100%	NE Victoria
RL006615	Fairley's ²	Retention License	340 Ha	100%	NE Victoria
RL006616	Unicorn ^{1&2}	Retention License	23,243 Ha	100%	NE Victoria
EL9476	Woomargama	Exploration Licence	85	100%	New South Wales
EL9516	Brewarrina	Exploration Licence	185	100%	New South Wales

All tenements remain in good standing as of 1 June 2024.

NOTE 1: Unicorn Project area subject to a 2% NSR Royalty Agreement with Osisko Gold Royalties Ltd dated 29 April 2013.

NOTE 2: Areas subject to a 1.5% Founders NSR Royalty Agreement.

NOTE 3: Areas are subject to a 1.0% NSR Royalty Agreement with Minvest Corporation Pty Ltd (See DTM ASX Release 1 June 2016).

NOTE 4: Areas are subject to a 0.75% Net Smelter Royalty on gold production, payable to Bruce William McLennan.

NOTE 5: Tenements subject to conditions noted in the SQM earn-in agreement ([Dart Mining ASX December 2022 SQM Earn-In](#))

APPENDIX 2

Table 1: Growlers Hill Collar Information

Hole ID	Inclination	Azimuth (Magnetic)	Achieved Hole Depth (m)	Surveyed Easting	Surveyed Northing	Surveyed Elevation_m (RL)
GHDD001	-65.1	58.3	152.7	321995.8	5948699.2	196.3
GHDD002	-70.4	91.1	102.5	321996.9	5948697.9	195.2
GHDD003	-74.9	59.3	139.7	322005.2	5948595.8	187.4
GHDD004	-82	56	137.7	322004.7	5948595.8	186.1
GHDD007	-69.2	35.8	73.3	322004.6	5948596.9	185.9
GHDD008	-79.8	31.8	179.2	322004.1	5948596.2	186.5

Table 2: Growlers Hill Drilling Significant Intercepts

Hole ID	From (m)	To (m)	Length (m)	Grade (Au ppm)
GHDD001	17.95	18.5	0.55	0.24
GHDD001	69.5	70	0.5	0.73
GHDD001	104.5	107	2.5	0.63
inc.	106.5	107	0.5	1.92
GHDD001	113.5	114	0.5	0.95
GHDD002	55.5	58.5	3	0.42
inc.	57	57.5	0.5	1.53
GHDD002	71.43	71.62	0.19	0.27
GHDD002	85.5	86.5	1	0.32
GHDD002	89	89.5	0.5	0.27
GHDD003	116.7	120.67	3.97	0.44
inc.	119.25	119.6	0.35	0.99
GHDD004	33	33.5	0.5	1.11
GHDD004	119.35	119.7	0.35	0.32
GHDD008	27.45	28.16	0.71	0.3
GHDD008	113.55	116	2.45	0.43

APPENDIX 3

JORC CODE, 2012 EDITION – TABLE 1

SECTION 1 SAMPLING TECHNIQUES AND DATA

Criteria	JORC Code Explanation	Commentary
Sampling techniques	<ul style="list-style-type: none"> Nature and quality of sampling (e.g. cut channels, random chips, or specific specialised industry standard measurement tools appropriate to the minerals under investigation, such as down hole gamma sondes, or handheld XRF instruments, etc.). These examples should not be taken as limiting the broad meaning of sampling. Include reference to measures taken to ensure sample representivity and the appropriate calibration of any measurement tools or systems used. Aspects of the determination of mineralisation that are Material to the Public Report. In cases where 'industry standard' work has been done this would be relatively simple (e.g. 'reverse circulation drilling was used to obtain 1 m samples from which 3 kg was pulverised to produce a 30 g charge for fire assay'). In other cases more explanation may be required, such as where there is coarse gold that has inherent sampling problems. Unusual commodities or mineralisation types (e.g. submarine nodules) may warrant disclosure of detailed information. 	<ul style="list-style-type: none"> Diamond drilling was utilised to obtain NQ2 sized drill core which was logged in detail at the Dart Core farm in Wodonga Zones of expected mineralisation, and zones showing visual prospectivity during logging were split into a minimum 0.15m to maximum 0.5m sample intervals In interpreted unmineralized samples were not submitted for analysis. Sample intervals were whole core sampled Samples were submitted to Onsite Laboratories in Bendigo for Photon Assay analysis <ul style="list-style-type: none"> Samples were crushed and pulverised to 90% passing 75 microns Samples wer rotary split into approximate 300gm sub samples Samples were passed through the Photon Assay machine for final gold analysis. Certified Reference Materials OREAS 233, OREAS 235, OREAS 237, OREAS 277, and OREAS 279 as well as CRM blank OREAS 22h were inserted a nominal 20 samples as part of a QA/QC system. Whole core sampling, and the large subsample size of the Photon Assay technique were utilised to combat the expected nuggerty nature of mineralisation at the Rushworth Project.
Drilling techniques	<ul style="list-style-type: none"> Drill type (e.g. core, reverse circulation, open-hole hammer, rotary air blast, auger, Bangka, sonic, etc.) and details (e.g. core diameter, triple or standard tube, depth of diamond tails, face-sampling bit or other type, whether core is oriented and if so, by what method, etc.). 	<ul style="list-style-type: none"> Diamond Drilling (Core) is of NQ2 (50.6mm diameter) from surface. Drill holes are angled, and core is orientated (Reflex Tool) to allow structural interpretation Holes surveyed using an Trushot downhole camera, with 3m multishot survey completed at the End of Hole
Drill sample recovery	<ul style="list-style-type: none"> Method of recording and assessing core and chip sample recoveries and results assessed. Measures taken to maximise sample recovery and ensure representative nature of the samples. Whether a relationship exists between sample recovery and grade and whether sample bias may have occurred due to preferential loss/gain of fine/coarse material. 	<ul style="list-style-type: none"> Drill core recovery is recorded for each drill interval recorded by the driller. The drilled interval (recorded on core blocks) and the recovered interval (measured during logging) are recorded in the company drill log database and recovery is calculated as a percentage.
Logging	<ul style="list-style-type: none"> Whether core and chip samples have been geologically and geotechnically logged to a level of detail to support appropriate Mineral Resource estimation, mining studies and metallurgical studies. Whether logging is qualitative or quantitative in nature. Core (or 	<ul style="list-style-type: none"> Drill core initial summary lithology logging is carried out to allow subsequent hole planning and to track hole geology against hole plan. Detailed geological logging of all drill core includes recording of recovery, weathering, lithology, alteration, mineralization and RQD.

	<p><i>costean, channel, etc.) photography.</i></p> <ul style="list-style-type: none"> • <i>The total length and percentage of the relevant intersections logged.</i> 	<ul style="list-style-type: none"> • All drill core is photographed prior to sampling. This logging is qualitative. • 100% of the drilling was logged.
<p><i>Sub-sampling techniques and sample preparation</i></p>	<ul style="list-style-type: none"> • <i>If core, whether cut or sawn and whether quarter, half or all core taken.</i> • <i>If non-core, whether riffled, tube sampled, rotary split, etc. and whether sampled wet or dry.</i> • <i>For all sample types, the nature, quality and appropriateness of the sample preparation technique.</i> • <i>Quality control procedures adopted for all sub-sampling stages to maximise representivity of samples.</i> • <i>Measures taken to ensure that the sampling is representative of the in situ material collected, including for instance results for field duplicate/second-half sampling.</i> • <i>Whether sample sizes are appropriate to the grain size of the material being sampled.</i> 	<ul style="list-style-type: none"> •
<p><i>Quality of assay data and laboratory tests</i></p>	<ul style="list-style-type: none"> • <i>The nature, quality and appropriateness of the assaying and laboratory procedures used and whether the technique is considered partial or total.</i> • <i>For geophysical tools, spectrometers, handheld XRF instruments, etc., the parameters used in determining the analysis including instrument make and model, reading times, calibrations factors applied and their derivation, etc.</i> • <i>Nature of quality control procedures adopted (e.g. standards, blanks, duplicates, external laboratory checks) and whether acceptable levels of accuracy (i.e. lack of bias) and precision have been established.</i> 	<ul style="list-style-type: none"> • Samples were submitted to ALS Chemex and analysed for a suite of trace elements using ALS Methods ME-ICP89 and ME-MS91 (a peroxide leach is considered a total extraction technique for lithium). These techniques are appropriate and considered a total extraction technique for key metals Rb, Nb, Sn, Nb, Ta, Cs and Li. • Samples were whole sample crushed, pulverised to P85 at 75um and assayed by ALS methods ME-ICP89 and ME-MS91. • ALS conducted their own internal laboratory checks. • Laboratory blanks, standards are reviewed per batch to monitor accuracy and precision. •
<p><i>Verification of sampling and assaying</i></p>	<ul style="list-style-type: none"> • <i>The verification of significant intersections by either independent or alternative company personnel.</i> • <i>The use of twinned holes.</i> • <i>Documentation of primary data, data entry procedures, data verification, data storage (physical and electronic) protocols.</i> • <i>Discuss any adjustment to assay data.</i> 	<ul style="list-style-type: none"> • Geological logging is completed by experienced geologists • The laboratory supplies all assay data as an export to a CSV file. The raw data is edited to separate all duplicates and CRM results into a QA/QC tab in the CSV file and reviewed. • Verification of significant intersections were made by alternative company personnel. • No independent review of assay data has been carried out. • Geological data is logged quality controlled spreadsheet and checked. • Electronic-only assay data is imported into a database from the laboratory's electronic data. • No holes were twinned at this early exploration stage.
<p><i>Location of data points</i></p>	<ul style="list-style-type: none"> • <i>Accuracy and quality of surveys used to locate drill holes (collar and down-hole surveys), trenches, mine workings and other locations used in Mineral Resource estimation.</i> • <i>Specification of the grid system used.</i> 	<ul style="list-style-type: none"> • The location of drill hole collars were confirmed with a Trimble DA2 receiver and Catalyst 0.3m Subscription set to MGA94 Grid Datum (Zone 55) • Accuracy is variable but is expected to be 0.3m

	<ul style="list-style-type: none"> • <i>Quality and adequacy of topographic control.</i> 	<ul style="list-style-type: none"> • During the mapping and Collar pickup process with constant visual quality assessment conducted, the receiver maintained an accuracy level <0.4m. • Elevation • Down hole, multi-shot surveys were taken at 15m then a nominal 30 m interval where possible using a Trueshot survey tool. A 3m multi-shot survey was conducted at end of hole. •
<i>Data spacing and distribution</i>	<ul style="list-style-type: none"> • <i>Data spacing for reporting of Exploration Results.</i> • <i>Whether the data spacing and distribution is sufficient to establish the degree of geological and grade continuity appropriate for the Mineral Resource and Ore Reserve estimation procedure(s) and classifications applied.</i> • <i>Whether sample compositing has been applied.</i> 	<ul style="list-style-type: none"> • Drill sites were restricted to existing tracks. It was not intended to establish a drill spacing for resource estimation although these holes can be used at a later date. • Drill core sampling minimum 0.15m and maximum 0.5m with sampling to lithological and mineralogical boundaries and is considered appropriate for the style of mineralisation.
<i>Orientation of data in relation to geological structure</i>	<ul style="list-style-type: none"> • <i>Whether the orientation of sampling achieves unbiased sampling of possible structures and the extent to which this is known, considering the deposit type.</i> • <i>If the relationship between the drilling orientation and the orientation of key mineralised structures is considered to have introduced a sampling bias, this should be assessed and reported if material.</i> 	<ul style="list-style-type: none"> • Drilling was restricted to existing tracks and pads. However, in all cases it was possible to drill at a high angle to the host structures and achieve a suitable orientation that crosscuts the expected mineralised orientation. • Drill transects were oriented perpendicular across the known trend of major structures.
<i>Sample security</i>	<ul style="list-style-type: none"> • <i>The measures taken to ensure sample security.</i> 	<ul style="list-style-type: none"> • All samples submitted for analysis are placed in sealed poly-weave bags and delivered to the laboratory by Dart Staff
<i>Audits or reviews</i>	<ul style="list-style-type: none"> • <i>The results of any audits or reviews of sampling techniques and data.</i> 	<ul style="list-style-type: none"> • An internal review of procedures, operations, sampling techniques and analytical techniques was made by Dart Mining. • No external review of sampling or results has been undertaken at this early stage of exploration.

SECTION 2 REPORTING OF EXPLORATION RESULTS

Criteria	JORC Code Explanation	Commentary
<p><i>Mineral tenement and land tenure status</i></p>	<ul style="list-style-type: none"> • <i>Type, reference name/number, location and ownership including agreements or material issues with third parties such as joint ventures, partnerships, overriding royalties, native title interests, historical sites, wilderness or national park and environmental settings.</i> • <i>The security of the tenure held at the time of reporting along with any known impediments to obtaining a licence to operate in the area.</i> 	<ul style="list-style-type: none"> • All tenements remain in good standing as of 1st June 2024 • Details of Dart Mining tenements shown in Appendix 2 and Figure 7 and Figure 8
<p><i>Exploration done by other parties</i></p>	<ul style="list-style-type: none"> • <i>Acknowledgment and appraisal of exploration by other parties.</i> 	<ul style="list-style-type: none"> • Gold was discovered in Rushworth in August 1853, and for several years production was from alluvial workings. This developed into reef workings by 1860. Mining had almost completely ceased by 1914 and attempts to revitalise the goldfield since have been met with no success. • Garratt (1985) calculated at least 97,000 oz of gold was produced from the Rushworth Goldfield, with a further 40,000 oz from the Whroo Goldfield 6km to the south of Rushworth. These figures are considered an absolute minimum for production due to poor record keeping prior to the 1860's and the number of small, unrecorded workings in the district. • A detailed soil sampling survey of over 1200 samples were collected across a 6 km² area by New Holland Mining N. L. • A series of 26 RAB holes were drilled across the Nuggety Hill – Specimen Hill prospect by New Holland Mining N.L. in 1993. Several significant intersections were identified, including 3m at 10.1 g/t, 3m at 3.16 g/t, and 3m at 2.83 g/t. The highest grades typically occurred between 50-60m down hole, and grade often displayed gold enrichment near the surface and approaching the water table. Notably, drilling stopped at the water table. • In 1994 New Holland Mining N. L. drilled 909m across 14 RAB drill holes across the Star of the West prospect, and 896m across 12 RC holes on the Nuggety prospect, 924m were drilled across 14 RC holes on the Fletchers Reef section of the Phoenix prospect. A review and resampling of soil grids across workings and various prospects showed little correlation between gold bearing structures and gold grade, suggesting soil sampling is of limited utility in identifying mineralisation. • Dart Mining completed an RC drilling campaign at Phoenix Hill in 2021 and reported results to the ASX (DART MINING ASX April 2021)
<p><i>Geology</i></p>	<ul style="list-style-type: none"> • <i>Deposit type, geological setting and style of mineralisation.</i> 	<ul style="list-style-type: none"> • EL006016 is located in the Melbourne structural zone of the Lachlan Fold Belt in central Victoria. The EL is underlain by metamorphosed Upper Silurian to Lower Devonian age Melbourne Group sediments. • A Bendigo-style mineralisation model in folded turbidite sequence with late-stage brittle faulting and late gold mineralisation is interpreted across the Phoenix Hill-Appleton's-Chinaman's Hill prospect at Rushworth, with nuggety gold

		<p>mineralisation observed on thrust-fault related flat veins, saddle reefs and AC joints.</p> <ul style="list-style-type: none"> The exploration rationale applied by Dart Mining is in line with the significant work previously undertaken across the tenement, targeting large thrust fault style reef systems and cross course faults, known to show high grade mineralisation and having potential for large tonnage stockwork-related gold mineralisation.
Drill hole Information	<ul style="list-style-type: none"> A summary of all information material to the understanding of the exploration results including a tabulation of the following information for all Material drill holes: <ul style="list-style-type: none"> easting and northing of the drill hole collar elevation or RL (Reduced Level – elevation above sea level in metres) of the drill hole collar dip and azimuth of the hole down hole length and interception depth hole length. If the exclusion of this information is justified on the basis that the information is not Material and this exclusion does not detract from the understanding of the report, the Competent Person should clearly explain why this is the case. 	<ul style="list-style-type: none"> All drillhole data (location, RL, azimuth, dip, depth etc.) for this drilling program, and significant assay intercepts are presented in appendix 2
Data aggregation methods	<ul style="list-style-type: none"> In reporting Exploration Results, weighting averaging techniques, maximum and/or minimum grade truncations (e.g. cutting of high grades) and cut-off grades are usually Material and should be stated. Where aggregate intercepts incorporate short lengths of high-grade results and longer lengths of low-grade results, the procedure used for such aggregation should be stated and some typical examples of such aggregations should be shown in detail. The assumptions used for any reporting of metal equivalent values should be clearly stated. 	<ul style="list-style-type: none"> The length weighted average gold content across the the full intersection width in each drill hole that has a continuous intersection of elevated gold grades greater than 0.2g/t Au The nominal sample length is 0.5m with a limited frequency of <1m sample lengths requiring a length weighted average technique to be used for significant intersections No grade cutting or cut-off grade has been applied in reporting the average grades of drill intersections at this early stage of exploration.
Relationship between mineralisation widths and intercept lengths	<ul style="list-style-type: none"> These relationships are particularly important in the reporting of Exploration Results. If the geometry of the mineralisation with respect to the drill hole angle is known, its nature should be reported. If it is not known and only the down hole lengths are reported, there should be a clear statement to this effect (e.g. ‘down hole length, true width not known’). 	<ul style="list-style-type: none"> The relationship between the drill hole and the geometry of the mineralised structures is clearly presented in a series of summary cross sections and drill plans. The angle between the drill hole and the mineralisation structure is variable with an interpretation of the relative geometry presented as cross sections down hole, down hole average grades are also presented on these drill sections and are representative of the current geological interpretation, this interpretation may change over time as more drilling information become available. Structural interpretation is constrained with surface geological mapping and down hole lithology logging.
Diagrams	<ul style="list-style-type: none"> Appropriate maps and sections (with scales) and tabulations of intercepts should be included for any significant discovery being reported These should include, but not be limited to a plan view of drill hole collar locations and appropriate sectional views. 	<ul style="list-style-type: none"> A summary table showing the hole location and orientation for all drilling is presented in Table 1 Drill plans and cross sections are also presented for all holes to illustrate the relationship between drill holes and average grades from down hole intersections

		within the target structure
<i>Balanced reporting</i>	<ul style="list-style-type: none"> Where comprehensive reporting of all Exploration Results is not practicable, representative reporting of both low and high grades and/or widths should be practiced to avoid misleading reporting of Exploration Results. 	<ul style="list-style-type: none"> Where mentioned, selected grade details and intercepts are included in the body of the report of this release, or else referenced back to the relevant release or data source. All drill-related data are referenced to the original ASX report by date published. All details appear in the original report.
<i>Other substantive exploration data</i>	<ul style="list-style-type: none"> Other exploration data, if meaningful and material, should be reported including (but not limited to): geological observations; geophysical survey results; geochemical survey results; bulk samples – size and method of treatment; metallurgical test results; bulk density, groundwater, geotechnical and rock characteristics; potential deleterious or contaminating substances. 	<ul style="list-style-type: none"> Any other relevant information is discussed in the main body of the report.
<i>Further work</i>	<ul style="list-style-type: none"> The nature and scale of planned further work (e.g. tests for lateral extensions or depth extensions or large-scale step-out drilling). Diagrams clearly highlighting the areas of possible extensions, including the main geological interpretations and future drilling areas, provided this information is not commercially sensitive. 	<ul style="list-style-type: none"> Planned work is discussed in the body of the report and is dependent on future company direction.