

## DY6 Acquires Previous Rutile Mining Site, Expanding Project Landholding to 8,782km<sup>2</sup>

To engage with this announcement, visit the [DY6 investor hub](#).

### **HIGHLIGHTS**

- **Binding acquisition secured:** DY6 to acquire 100% of 7 contiguous exploration licence applications comprising the **Yaoundé West Project** in central Cameroon.
- **Proven production history:** Yaoundé West was a **major rutile producing area between 1935 and 1955**, contributing to Cameroon's position as the **world's 3<sup>rd</sup> largest rutile producer** at the time.
- **Unique in Cameroon:** Yaoundé West is the **only recorded site of historical residual rutile mining** in the country.
- **Proven high-grade potential:** BRGM mapping delineated a 70km x 15km **high-grade residual rutile mineralisation zone**, with adjacent DY6 licences already demonstrating **coarse rutile up to 97.5% TiO<sub>2</sub>**.<sup>1</sup>
- **District-scale landholding:** Acquisition significantly increases DY6's 100%-owned tenure in central Cameroon to **8,782km<sup>2</sup>**, cementing its position as the **dominant player** in a globally emerging rutile province.
- **Strategic Location:** Close proximity to key infrastructure including **rail, port, power, and the capital Yaoundé**, offering exceptional development and logistical advantages.
- **Exploration momentum:** Ongoing systematic soil-sampling programme to be expanded across Yaoundé West licences, ahead of **maiden auger drilling**.

**DY6 Metals Ltd** (ASX: DY6, "DY6" or "Company") is pleased to announce that it has entered into a binding agreement with the vendors of Desmond Metals Pty Ltd to acquire 100% of seven (7) contiguous exploration licence applications (comprising the Yaoundé West Project) that are highly prospective for rutile in Central Cameroon (**Acquisition**).

Yaoundé West is a highly strategic project and was a key area for historic rutile production in Cameroon when the country was the 3<sup>rd</sup> largest producer of the mineral globally. Significantly, the Project is the only recorded location of historical residual rutile mining in the country. It is underlain by a bedrock of high-grade, kyanite-bearing mica schist and garnet paragneiss, making it highly prospective for residual rutile mineralisation.

<sup>1</sup> Refer ASX Announcement 11 August 2025, titled "XRF Analysis confirms high-quality of natural rutile"

The Acquisition will integrate the Yaoundé West Project into the Company's existing Central Rutile Project, significantly expanding the project landholding from 5,901km<sup>2</sup> to 8,789km<sup>2</sup> (Figure 1).

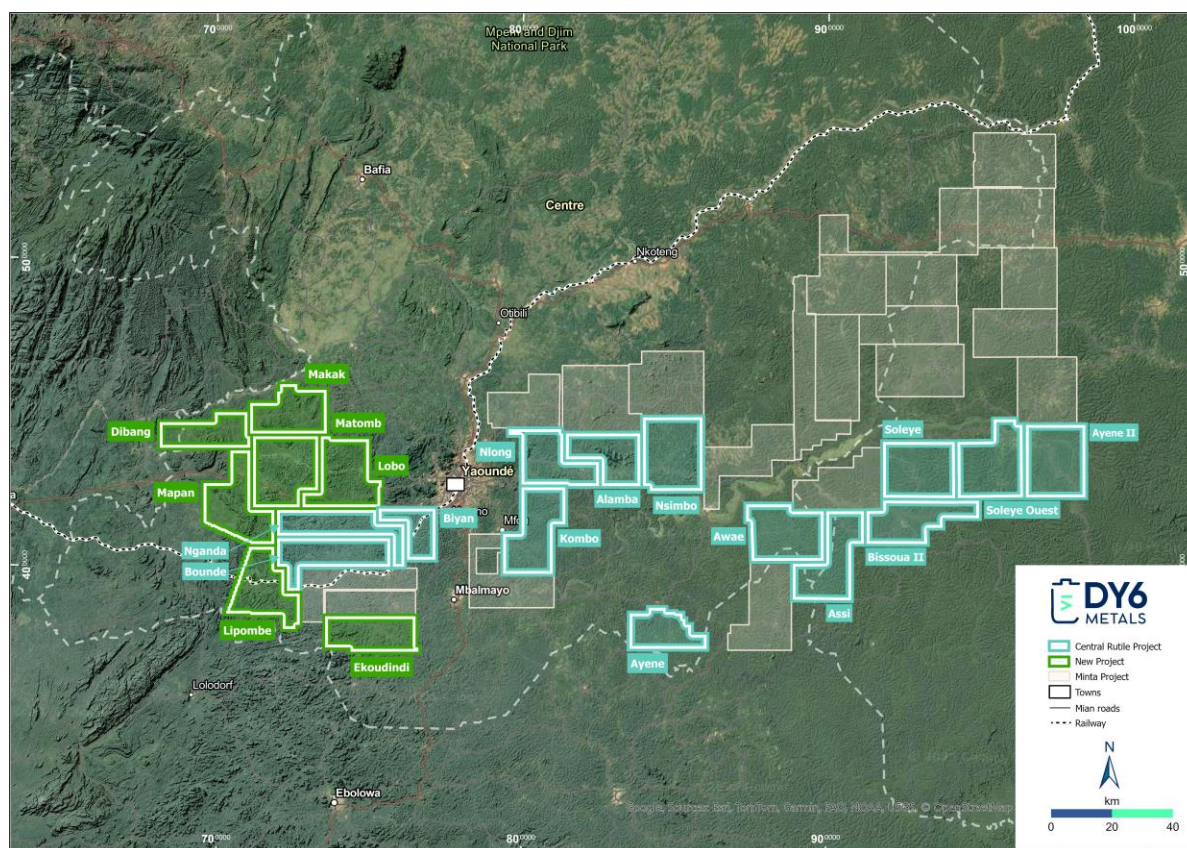
In consideration for the Acquisition, the Company has agreed to pay the vendors (subject to Shareholder approval) an aggregate cash payment of \$1,500,000 and issue 10,000,000 fully paid ordinary shares and 10,000,000 performance rights. Further details of the Acquisition are set out on pages 6 and 7.

**CEO, Cliff Fitzhenry, commented:** *"We are absolutely delighted to have completed the acquisition of the Yaoundé West Project which we firmly believe represents a world class and highly strategic asset."*

*Yaoundé West is particularly significant in that it is the only historically recorded area of residual rutile mining in the country, highlighting its geological significance and proven mineral potential. Its premium land position, combined with unmatched proximity to key infrastructure - including port, rail, and power - provides a major logistical and development advantage.*

*The acquisition process was highly competitive, with several parties pursuing this exceptional asset. Our success in securing it is a strong endorsement of our strategic approach and capability to identify and execute on tier-one critical mineral opportunities.*

*We believe that following this acquisition, DY6 will have a dominant landholding in Central Cameroon, with the expanded Central Rutile Project now comprising 100% ownership of 8,782km<sup>2</sup> of premium, highly prospective tenure underpinning this district scale opportunity in an emerging, globally significant rutile province."*



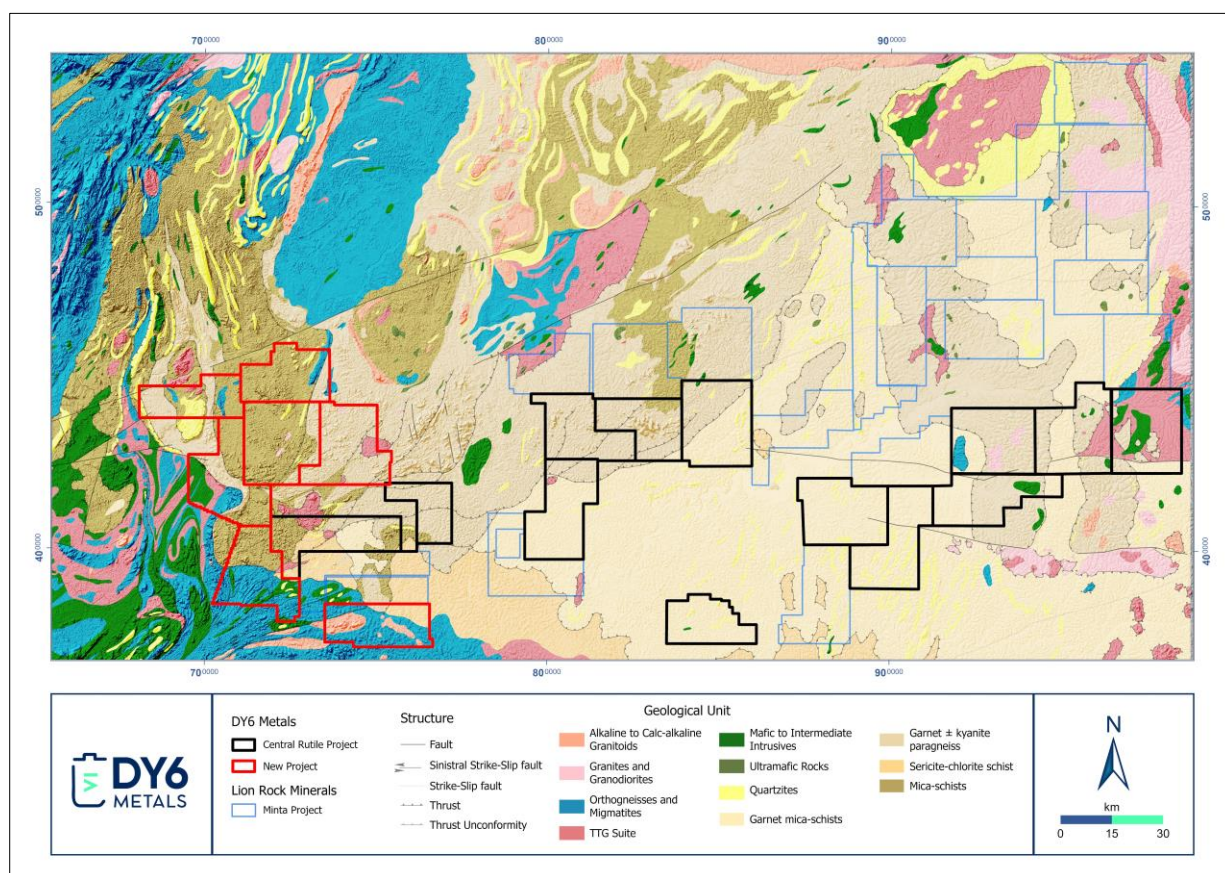
**Figure 1:** DY6's Central Project showing the current licences in light blue and the Yaoundé West licences in green.



## A World Class Project in an Emerging, Globally Significant Rutile Province

The expanded Central Rutile Project now consists of 21, 100% owned exploration permits under valid applications covering 8,782km<sup>2</sup> across an area rapidly emerging as a globally significant rutile province within Central Cameroon.

The project area is predominantly underlain by kyanite-bearing mica schist and garnet paragneiss bedrock (see **Figure 2**), which are considered the primary source of rutile. During in-situ weathering, rutile is liberated from the bedrock and progressively concentrated and upgraded within the overlying saprolite layer. This forms an in-situ, eluvial saprolite hosted rutile deposit analogous to **Sovereign Metal's** Tier 1 Kasiya deposit in Malawi (the world's largest primary rutile deposit at 1.8 billion tons at 1.0% rutile).



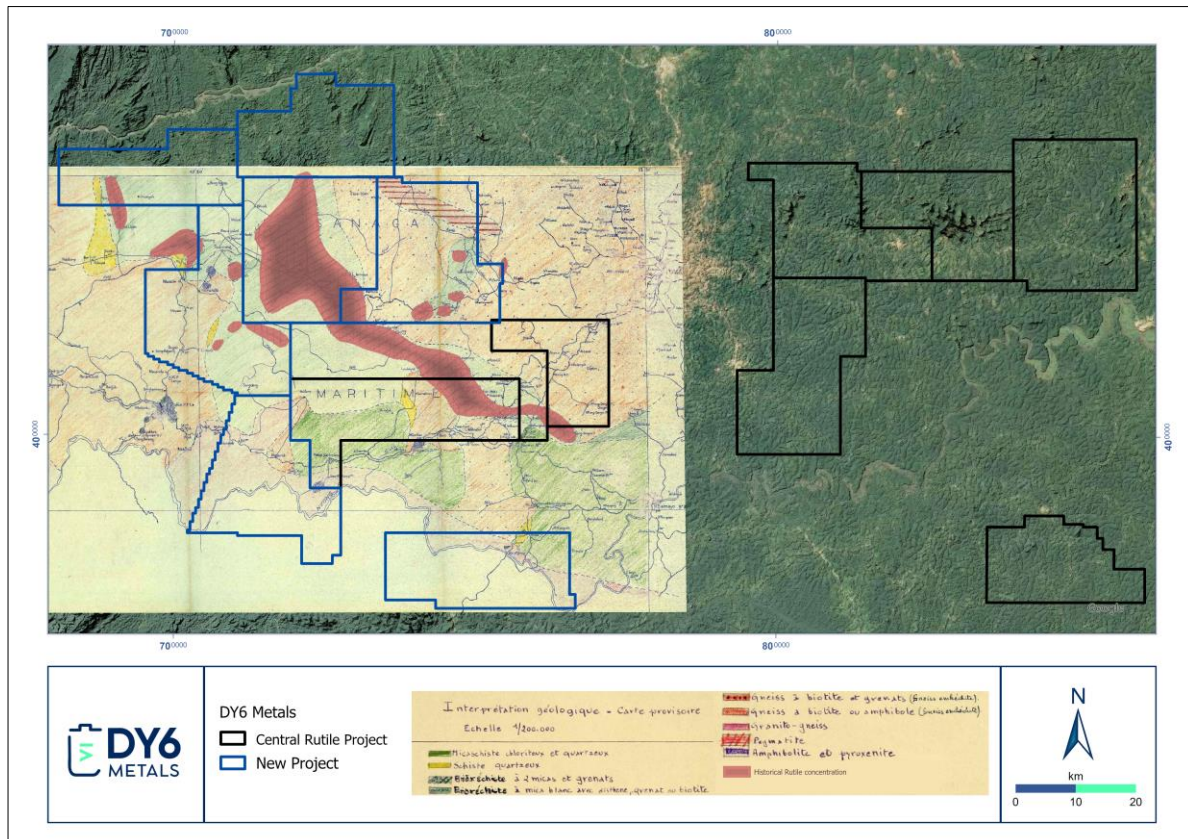
**Figure 2:** Regional geological map of Central Cameroon showing DY6's Central Rutile Project, along with Lion Rock Minerals' Minta Project, both underlain by a sequence of high-grade paragneisses and schists.

## A Key Area of Historic Natural Rutile Production in Cameroon

One of the core reasons for acquiring this highly prospective project is its proven mineral potential underpinned by it being a key area of historic rutile production. Historical production figures from between 1935 and 1955 show that Cameroon produced some 15,000 tons of high-purity (>95 %) rutile, with Yaounde West a major contributor to this production, from alluvial and eluvial (residual) sources.

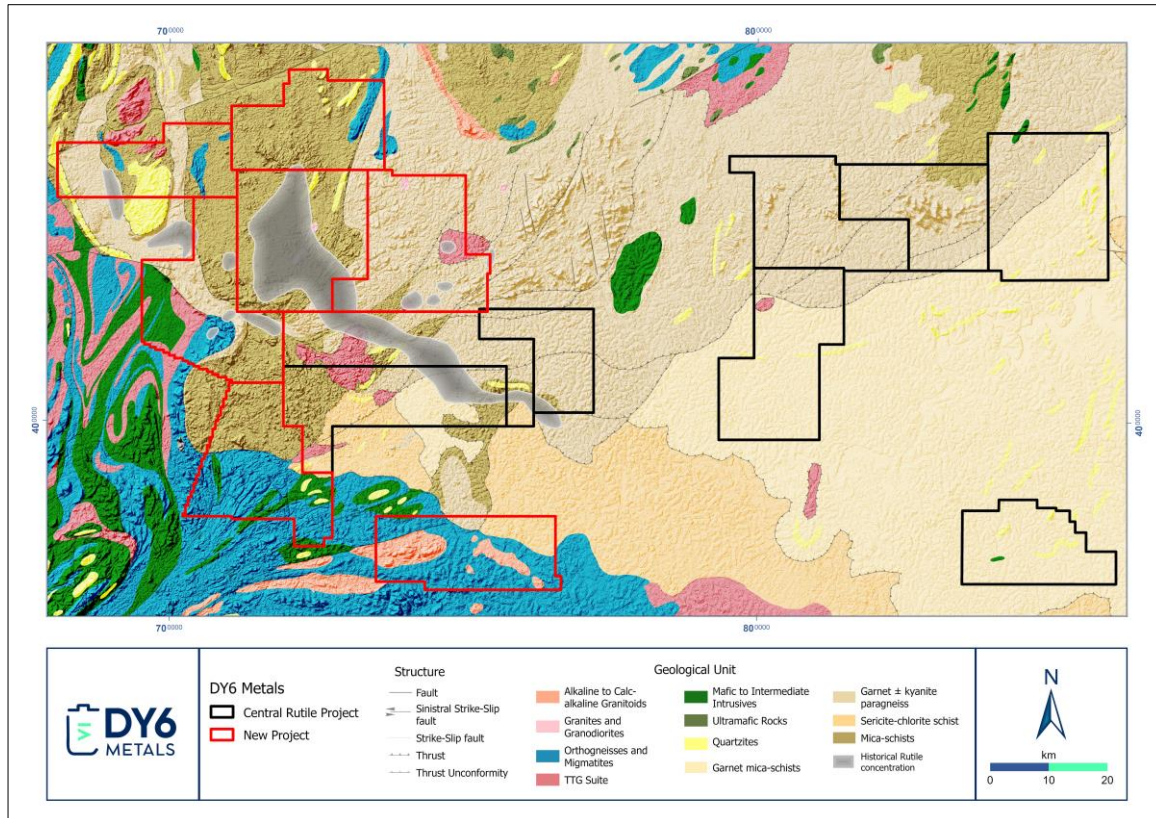
Additionally, the French Geological Survey (**BRGM**) mapped a zone of high-grade rutile mineralisation of some 70km in strike length and some 15km across at its widest point (see Figures 3 to 5). This zone was characterised by the occurrence of residual rutile mineralisation

along with coarse grained rutile nuggets at surface. All historic mining in this area occurred within this zone with evidence of residual rutile mining being the only known location of historic residual rutile mineralisation in the country.

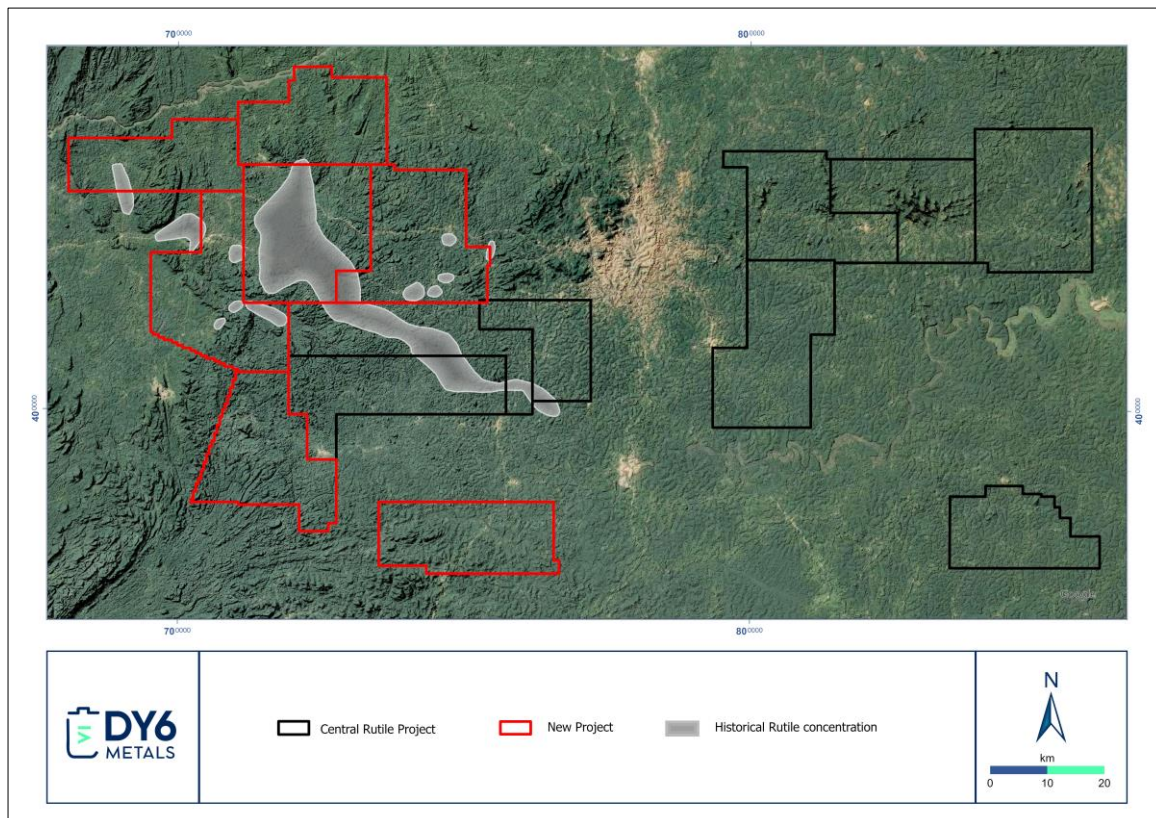


**Figure 3:** Georeferenced BRGM map with the current Central Project licences in black and the Yaoundé West licences in blue, along with the BRGM high-grade zone in red shading. (inset map georeferenced from BRGM Report E-O3-59).





**Figure 4:** Geological map showing the current Central project licences in black, the Yaoundé West licences in red, and the high grade BRGM mapped rutile zone in grey shade.



**Figure 5:** Map showing a portion of the current Central project licences in black, the Yaoundé West licences in red, and the high grade BRGM mapped rutile zone in grey shade.

## Highly Strategic Location and Unmatched Logistics

Another key factor of the project is its highly strategic location and access to key infrastructure (see Figure 6). Yaoundé West is located within 20km from Yaoundé city at its closest point and has sealed road access (including multi carriageway highway) with the railway line running through one of its licences. Its strategic location is enhanced by road and rail connections within 200km of the deep-water port of Douala.

The addition of the Yaoundé West licences (2,888km<sup>2</sup>) expands the Central Rutile Project to a significant 8,782km<sup>2</sup>, while DY6's total Cameroonian landholding (both Central Rutile and Douala Basin HMS Projects) increases to 11,362km<sup>2</sup>.

## Key terms of the Acquisition

The Company has entered into a binding agreement with Mbolo Capital Pty Ltd (**Mbolo**), the vendor of Desmond Metals Pty Ltd (**Desmond**) to acquire 100% of the issued capital of Desmond. The vendor is not a related party of the Company.

Desmond, through its wholly owned Cameroonian subsidiary, Zebra Minerals Ltd, is the 100% legal and beneficial owner of 7 valid exploration permit applications comprising the Yaounde West Project, as set out in the Annexure.

In consideration for the Acquisition, subject to shareholder approval, the Company will pay the Vendors the following:

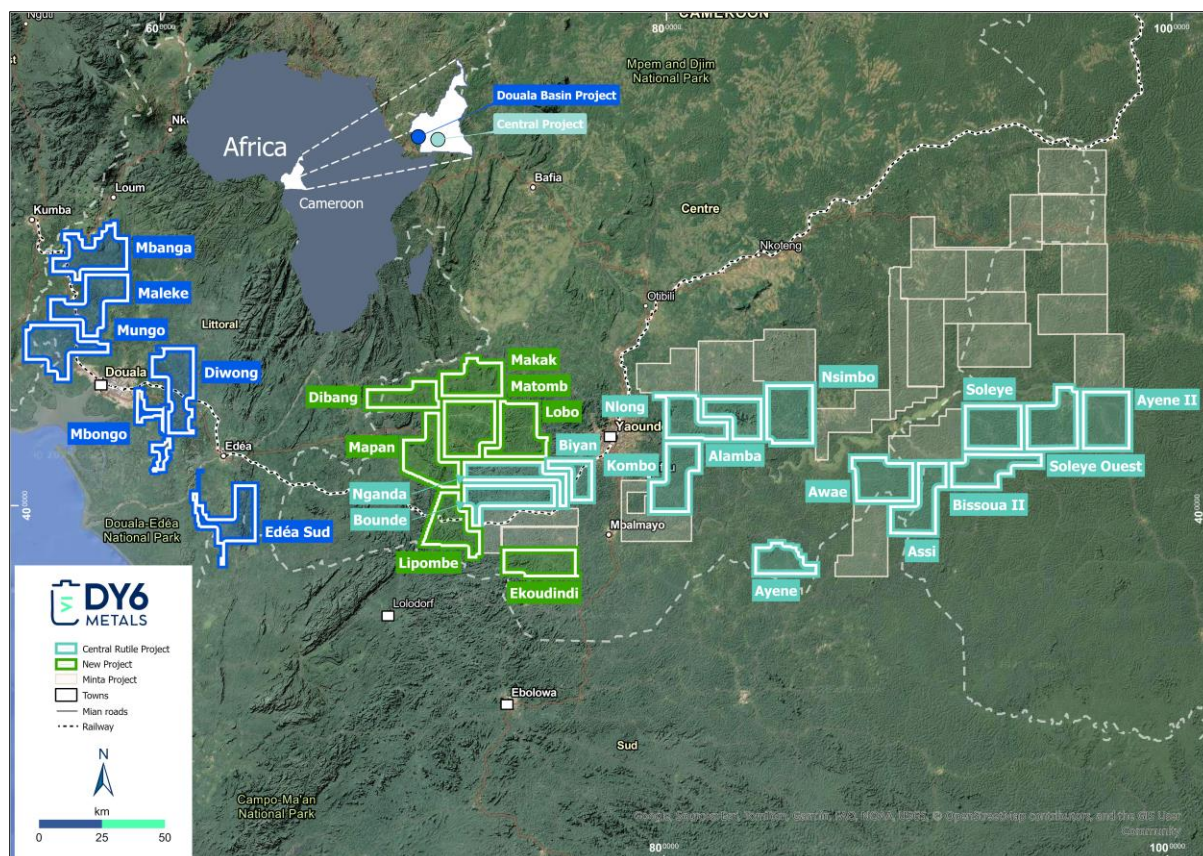
- **Upfront Consideration:**
  - \$750,000 in cash; and
  - 10,000,000 fully paid ordinary shares (escrowed for 3 months post issue)
- **Deferred Consideration:**
  - 5,000,000 Tranche 1 Performance Rights, which convert into ordinary shares 6 months post completion
  - 5,000,000 Tranche 2 Performance Rights, which convert into ordinary shares 12 months post completion; and
  - \$750,000 in cash 12 months post completion

The binding agreement otherwise contains terms and conditions considered standard for agreements of this nature.

**Table:** Tenements to be acquired as part of the Acquisition

Tenement Name	Project Name	Holder	Application Date	Size (km <sup>2</sup> )
Matomb	Yaounde West	Zebra Minerals Ltd	15/02/2023	499
Makak	Yaounde West	Zebra Minerals Ltd	15/02/2023	369
Mapan	Yaounde West	Zebra Minerals Ltd	18/07/2025	459
Lobo	Yaounde West	Zebra Minerals Ltd	18/07/2025	459
Lipombe	Yaounde West	Zebra Minerals Ltd	18/07/2025	417
Dibang	Yaounde West	Zebra Minerals Ltd	18/07/2025	315
Ekoundindi	Yaounde West	Zebra Minerals Ltd	18/07/2025	370





**Figure 6:** Map showing the current Central project licences in light blue, the Yaounde West licences in green, and the Douala Basin Project in dark blue. Note the railway running from Douala to Yaounde running through the Company's licences.

-ENDS-

This announcement has been authorised by the Board of DY6.

## More information

Mr Daniel Smith	Mr Cliff Fitzhenry
Executive Chairman	CEO
<a href="mailto:dan.smith@dy6metals.com">dan.smith@dy6metals.com</a>	<a href="mailto:Clifford.fitzhenry@dy6metals.com">Clifford.fitzhenry@dy6metals.com</a>

## Competent Person Statement

The information contained in this announcement that relates to geological information and exploration results at the Central Rutile Project, is based on information compiled by Mr Clifford Fitzhenry, a Competent Person who is a Registered Professional Natural Scientist with the Council for Natural Scientific Professionals (SACNASP). Mr Fitzhenry is the Company's CEO and has sufficient experience which is relevant to the style of mineralization and type of deposit under consideration and to the activity which he is undertaking to qualify as a Competent Person as defined in the 2012 Edition of the 'Australasian Code for Reporting of Exploration Results, Mineral Resources and Ore Reserves'. Mr Fitzhenry consents to the inclusion in this announcement of the matters based on his information in the form and context in which it appears.

The Information in this announcement that relates to exploration results, mineral resources or ore reserves for the Central Rutile Project is extracted from the following announcement:

- ASX Announcement dated 11 August 2025 titled “XRF analysis confirms high-quality of natural rutile”.

which is available at [www.dy6metals.com](http://www.dy6metals.com).

The Company confirms that it is not aware of any new information or data that materially affects the information included in the above original market announcement and that all material assumptions and technical parameters underpinning the estimates in the relevant market announcement continue to apply and have not materially changed. The Company confirms that the form and context in which the Competent Person’s findings are presented have not been materially modified from the original market announcement.

## References

1. Bureau Minier de la France d’Outre-Mer (Syndicat du Rutile, 1950–1952) <https://archives-nationales-oultre-mer.culture.gouv.fr/>

## Disclaimer on Historical Data

The map and information presented are from historical reports by the Bureau Minier de la France d’Outre-Mer (Syndicat du Rutile, 1950–1952). These results predate the JORC Code (2012) and have not been independently verified.

## Forward-Looking Statements

This announcement may include forward-looking statements and opinions. Forward-looking statements, opinions and estimates are only predictions and are subject to risks, uncertainties and assumptions which are outside the control of DY6 Metals Ltd. Past performance is not necessarily a guide to future performance and no representation or warranty is made as to the likelihood of achievement or reasonableness of any forward-looking statements, opinions or estimates. Actual values, results or events may be materially different to those expressed or implied in this announcement.

Given these uncertainties, readers are cautioned not to place reliance on forward-looking statements, opinions or estimates. Any forward-looking statements, opinions or estimates in this announcement speak only at the date of issue of this announcement. Subject to any continuing obligations under applicable law and the ASX Listing Rules, DY6 does not undertake any obligation to update or revise any information or any of the forward-looking statements opinions or estimates in this announcement or any changes in events, conditions or circumstances on which any such disclosures are based.

## Appendix:

**Table 1:** Licence tenement details of the DY6’s Douala Basin HMS and Central Rutile Projects in Cameroon.

Tenement Name	Project Name	Holder	Application Date	Area	Granted Date
Mungo	Douala	Rhino Resources Ltd	29/06/2022	483km <sup>2</sup>	14/12/2022
Mbanga	Douala	Rhino Resources Ltd	29/06/2022	468km <sup>2</sup>	14/12/2022
Maleke	Douala	Rhino Resources Ltd	30/01/2024	491km <sup>2</sup>	N/A
Diwong	Douala	Rhino Resources Ltd	30/01/2024	484km <sup>2</sup>	N/A
Mbongo	Douala	Rhino Resources Ltd	30/09/2022	214km <sup>2</sup>	N/A
Edea Sud	Douala	Rhino Resources Ltd	29/06/2022	440km <sup>2</sup>	14/12/2022
Nganda	Central	Gorilla Mining Ltd	19/02/2025	396km <sup>2</sup>	N/A
Nsimbo	Central	Gorilla Mining Ltd	19/02/2025	495km <sup>2</sup>	N/A
Kombo	Central	Gorilla Mining Ltd	19/02/2025	460km <sup>2</sup>	N/A



Bounde	Central	Gorilla Mining Ltd	19/02/2025	425km <sup>2</sup>	N/A
Alamba	Central	Gorilla Mining Ltd	19/02/2025	348km <sup>2</sup>	N/A
Biyen	Central	Gorilla Mining Ltd	18/07/2025	261km <sup>2</sup>	N/A
Nlong	Central	Gorilla Mining Ltd	18/07/2025	371km <sup>2</sup>	N/A
Awae	Central	Weaver Resources Ltd	07/07/2025	462km <sup>2</sup>	N/A
Ayene II	Central	Weaver Resources Ltd	07/07/2025	497km <sup>2</sup>	N/A
Assi	Central	Weaver Resources Ltd	07/07/2025	488km <sup>2</sup>	N/A
Bissoua _II	Central	Weaver Resources Ltd	07/07/2025	441km <sup>2</sup>	N/A
Soleye	Central	Weaver Resources Ltd	23/06/2025	466km <sup>2</sup>	N/A
Soleye W	Central	Weaver Resources Ltd	23/06/2025	496km <sup>2</sup>	N/A
Ayene	Central	Weaver Resources Ltd	07/07/2025	295km <sup>2</sup>	N/A