

11th June 2026

Craig's Rest Advances on Dual Fronts with Environmental Surveys and Growth Programs Underway

HIGHLIGHTS

- Evergold advances Craig's Rest toward a potential 2027 development pathway while simultaneously pursuing resource growth opportunities
- Craig's Rest hosts a 48,600 oz Au @ 1.38g/t JORC (2012) Inferred Mineral Resource within Evergold's broader 63,000 oz Au Leonora Goldfields resource inventory
- Key milestone achieved with flora and fauna surveys completed; hydrology studies scheduled to commence next
- Soil geochemistry and drone magnetic surveys set to commence across Craig's Rest, targeting extensions to mineralisation along the prospective Wonder Fault corridor
- Craig's Rest underpinned by exceptional high-grade historical drilling with standout intercepts including:
 - 5m @ 57.9 g/t Au from 16m (GWRB005)
 - 2m @ 26.6 g/t Au from 58m (KLRC002)
 - 4m @ 4.47 g/t Au from 30m (GW15)
 - 10m @ 2.4 g/t Au from 2m (GWRC07)
 - 8m @ 2.17 g/t Au from 61m (GW20)
 - 4m @ 3.81 g/t Au from 50m (GWRC05)

Evergold Minerals Limited (ASX: EG1) ("Evergold" or "the Company") is pleased to provide an update on activities at its flagship Craig's Rest Prospect, part of the wholly owned Leonora Goldfields Project in Western Australia's prolific central Goldfields.

Craig's Rest hosts a 48,600 oz Au JORC (2012) Inferred Mineral Resource within a broader project endowment of 63,000 oz Au. With environmental studies now underway and two field programs commencing, Evergold is advancing Craig's Rest on two parallel fronts: building the technical foundations for future development while simultaneously testing the remaining resource upside across the prospect.

Evergold Chairman Simon Lill commented:

"Craig's Rest is where our Leonora strategy comes together. Completing the flora and fauna surveys is an important early milestone, and the upcoming hydrology study keeps us firmly on track as we advance the studies and approvals required to support our targeted development pathway. In parallel,

soil geochemistry and drone magnetics will sharpen our drill targets and test the broader upside across the project. It's a deliberate, methodical approach, and both fronts are advancing at once."

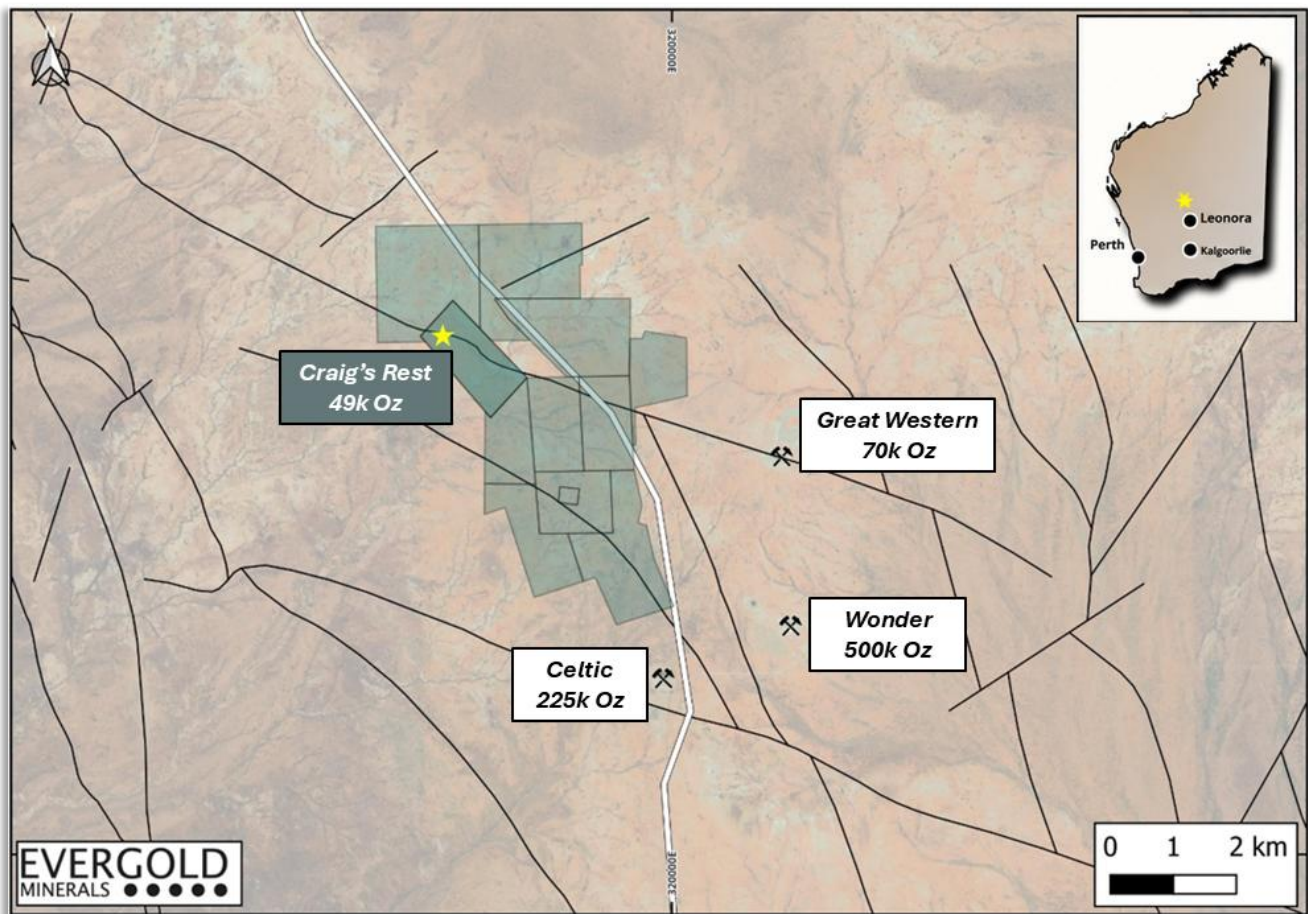


Figure 1: Craig's Rest Prospect

Evergold has commenced key environmental and technical studies designed to support the future development of Craig's Rest. Terrestrial flora and fauna surveys have been completed, an important early milestone in the regulatory pathway, with a hydrology study set to commence shortly.

A hydrology study will assess groundwater and surface-water conditions across the prospect area to inform mine planning and water management. Together, these studies form key components of the environmental and regulatory approvals pathway, which the Company is progressing alongside ongoing stakeholder engagement.

Subject to the completion of approvals, resource-definition drilling and technical studies, the Company is targeting a pathway toward potential mining activities commencing in 2027. Craig's Rest is well positioned for that pathway, situated within an established, well-serviced mining district with multiple third-party processing facilities within trucking distance. This removes the need for Evergold to build its own processing infrastructure.

Soil Geochemistry and Drone Magnetics Commencing

Alongside the approvals work, Evergold is mobilising two field programs designed to expand and better define the mineralised system at Craig's Rest.

Geochemical survey - a regional soil-sampling program is scheduled to commence across Craig's Rest in coming weeks. The survey is designed to identify geochemical anomalies and delineate potential extensions of the mineralised zones along the Wonder Fault, helping to prioritise and refine targets ahead of future drilling.

Drone magnetic survey - a high-resolution drone airborne magnetic survey is also soon to commence over Craig's Rest. The survey will provide detailed definition of the structural architecture, mapping fault and shear-zone geometry to refine drill targets. Results will be integrated with the soil geochemistry and existing datasets to generate and rank additional drill targets across the prospect.

Importantly, both programs are low-cost target generation initiatives designed to maximise the effectiveness of future exploration targeting.



Figure 2: Craig's Rest Mineralisation and Historic Mining

Existing Resource and High-Grade Historical Results

Craig's Rest is the cornerstone of the Leonora Goldfields Project, which hosts a JORC (2012) Inferred Mineral Resource of 63,000 oz Au across three priority prospects. The estimate, current as at 2023, is based on 37 drill holes for 3,851 m and was reported to the ASX on 9 July 2025¹.

Table 1: Leonora Goldfields Project — JORC (2012) Inferred Mineral Resource

Prospect	Cut-off (g/t)	Tonnes	Au Grade (g/t)	Ounces
Craig's Rest	0.5	1,096,000	1.38	48,600
Victor Bore	0.5	234,000	1.56	11,700
Great Northern	0.5	57,000	1.47	2,700
TOTAL		1,387,000	1.41	63,000

Figures may not sum precisely due to rounding. Cut-off grade 0.5 g/t Au.

¹ EG1 ASX Announcement, "EG1 commences exploration at Leonora Goldfields Project, WA" dated 9 July 2025

The current Craig's Rest Mineral Resource is illustrated in Figure 3, highlighting the distribution of mineralisation within the existing resource footprint.

Historical drilling at Craig's Rest has delivered widespread gold mineralisation with high-grade zones from surface to 30–40 m depth, potentially offering a free-dig component for future mining. Significant historical intercepts include:

- 5m @ 57.9 g/t Au from 16 m (Tarmoola GWRB005)
- 2m @ 26.6 g/t Au from 58 m (Tarmoola RC hole KLRC002)
- 4m @ 4.47 g/t Au from 30 m (Aztec RC hole GW15)

The Craig's Rest resource of 48,600 oz Au (1.1 Mt @ 1.38 g/t) sits along the Craig's Fault, the same regional structure that hosts a string of historic mining centres in the immediate district (Figure 1). The combination of geochemistry, magnetics and planned follow-up drilling is designed to assess the potential for resource growth and future resource classification upgrades along strike and at depth.

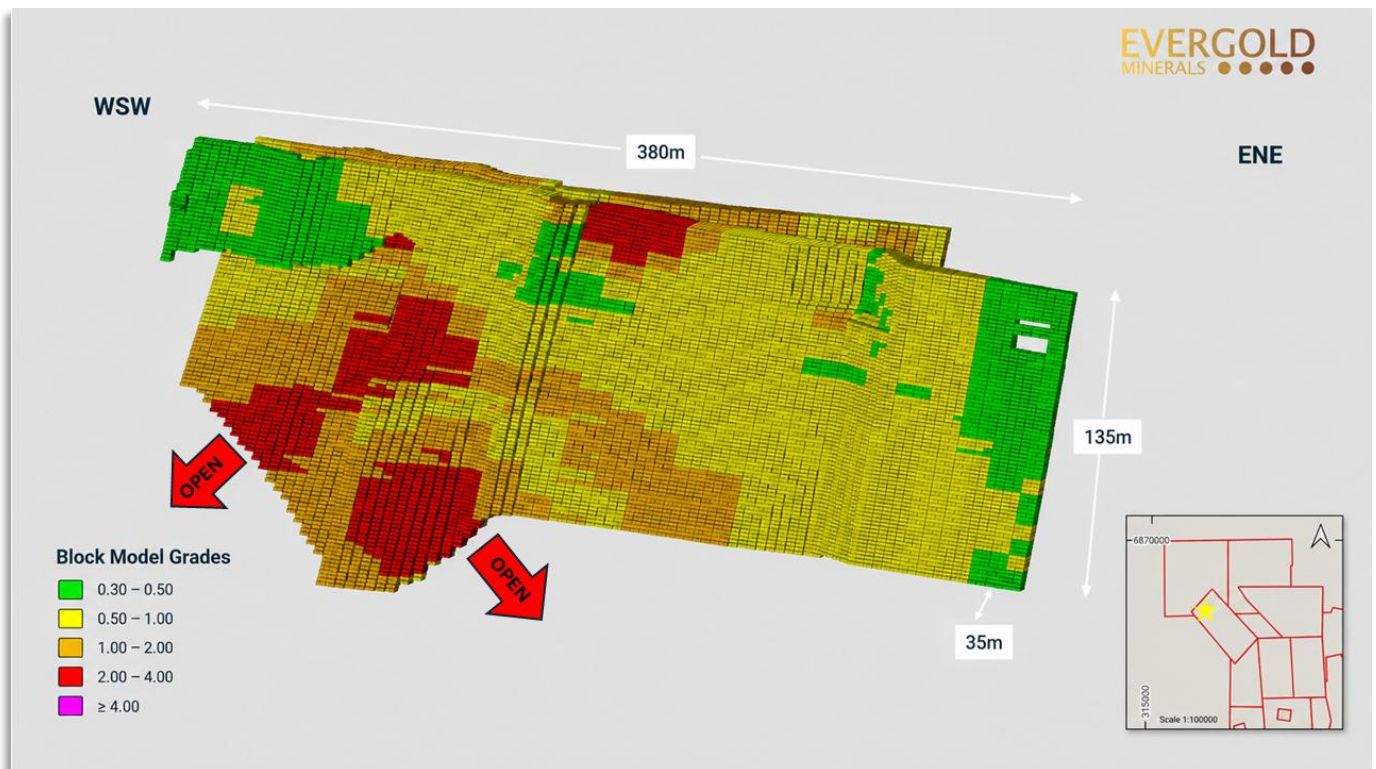


Figure 3: Craigs Rest Block Model

Next Steps

- Complete the hydrology study and progress the broader mining proposal submission for Craig's Rest
- Complete the regional soil geochemistry survey across the prospect in coming weeks
- Complete the drone magnetic survey and integrate results with geochemistry and existing datasets to generate and rank drill targets
- Finalise planning for resource-definition drilling at Craig's Rest to support resource growth
- Plan a regional air core drilling program to follow up geochemical and magnetic anomalies across the greater project area

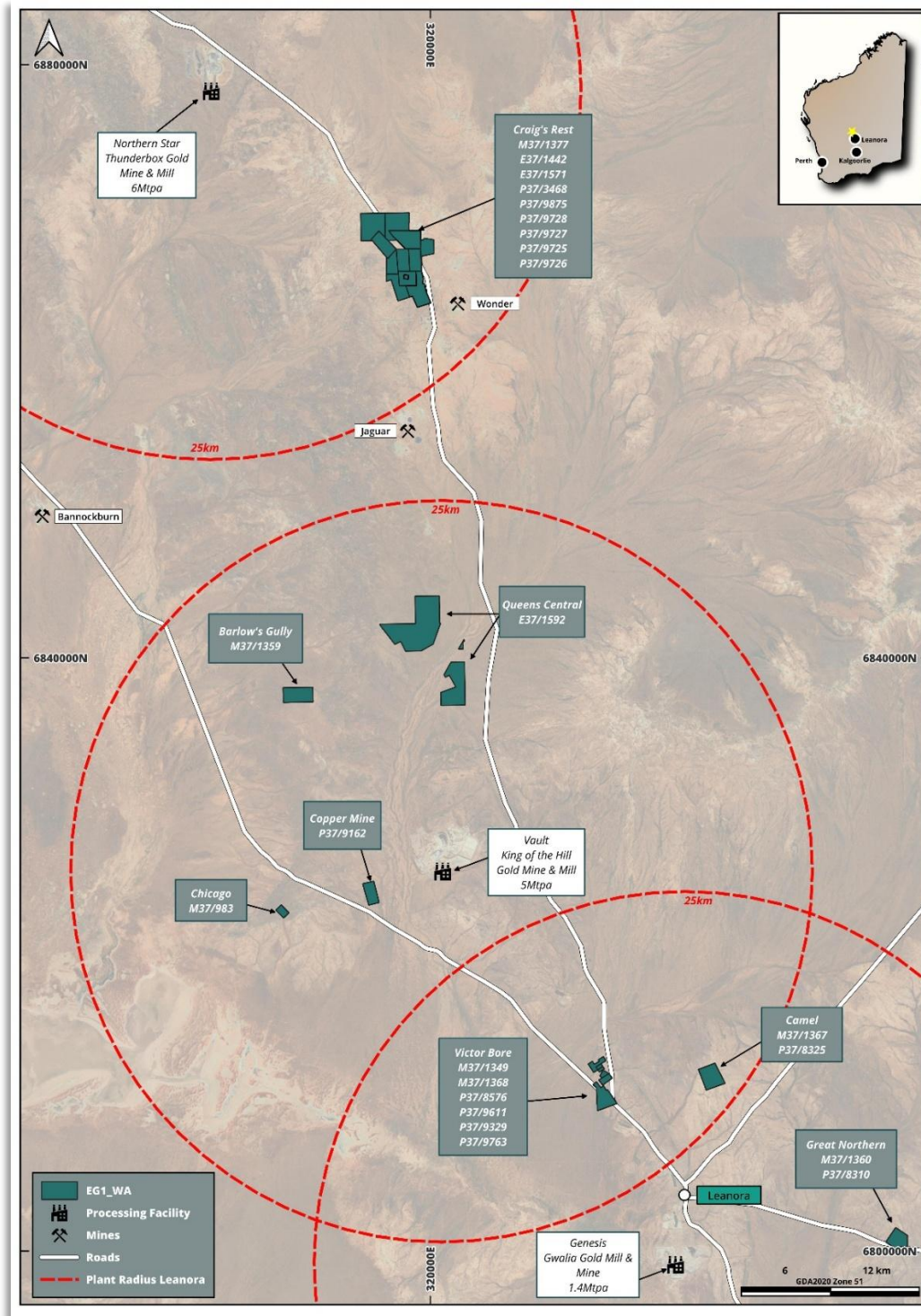


Figure 4: Leonora Infrastructure Map

Leonora Gold Project Overview

Evergold Minerals Limited's (ASX: EG1) wholly owned Leonora Goldfields Project sits in the heart of Western Australia's prolific central Goldfields, near the established mining centre of Leonora.

The project comprises an extensive tenement package along the prospective Wonder Fault corridor, spanning nine priority prospects: Craig's Rest, Queens Central, Barlow's Gully, Chicago, Copper Mine, Randwick, Victor Bore, Camel and Great Northern.

It hosts a JORC (2012) Inferred Mineral Resource of 63,000 oz Au across three of these prospects, anchored by the flagship Craig's Rest (1.096 Mt @ 1.38 g/t Au for 48,600 oz Au), together with Victor Bore (11,700 oz Au) and Great Northern (2,700 oz Au).

The resource is current and is based on 37 drill holes for 3,851 m.

Historical drilling has returned high-grade intercepts including 5m @ 57.9 g/t Au from 16 m, with widespread mineralisation extending from surface.

Positioned within trucking distance of multiple operating third-party processing facilities, the Leonora Project offers Evergold a clear, capital-efficient pathway to advance its gold endowment toward future production, while continuing to test resource growth across the corridor.

Previously Reported Information

The Craig's Rest Mineral Resource estimate referred to in this announcement (Inferred Mineral Resource of 1.1 Mt @ 1.38 g/t Au for 48,600 oz at a 0.5 g/t Au cut-off and all other historical drilling results that are noted in this announcement not otherwise specifically referenced) was first reported by Infinity Mining Limited (ASX: IMI) in its ASX announcement titled "Maiden Gold Resource Estimate – Amendment" dated 19 January 2024, and was prepared and reported in accordance with the JORC Code (2012). Evergold Minerals Ltd is not aware of any new information or data that materially affects the information included in that announcement and confirms that all material assumptions and technical parameters underpinning the estimate continue to apply and have not materially changed. The form and context in which the Competent Person's findings are presented have not been materially modified from the original market announcement.

This announcement is approved for release by the Board of Evergold Minerals Limited

FOR FURTHER INFORMATION, PLEASE CONTACT:

COMPANY

Glenn Grayson
Director
E. glenn@evergold.au

MEDIA & INVESTOR RELATIONS

Melissa Tempa
NWR Communications
E. melissa@nwrcommunications.com.au

¹ EG1 ASX Announcement, "Amended release in respect of EG1 acquires Leonora Goldfields Project, WA in transformation deal", dated 9 May 2025, referring to:

- ASX Announcement, IMI: Maiden Gold Resource Estimate, dated 19 January 2024
- ASX Announcement, IMI: Further Gold Resource from the Goldfields, dated 29 February 2024.

ABOUT EVERGOLD MINERALS

Evergold Minerals Limited (ASX: EG1) is an Australian exploration company focused on discovering and developing gold projects across Australia. The company currently holds the Leonora Goldfields Project and the Mt Monger Gold Project in Western Australia's Goldfields region, along with the Bynoe Project in the Northern Territory. Evergold is actively evaluating and pursuing additional high-quality gold exploration opportunities to enhance and diversify its project portfolio.

Competent Persons Statement

The information in this release that relates to Exploration Results or Mineral Resources is based on information compiled by Glenn Grayson who is a Member of the Australian Institute of Mining and Metallurgy (AusIMM). Mr. Grayson has sufficient experience that is relevant to the style of mineralisation and type of deposit under consideration and to the activity being undertaken to qualify as a Competent Person as defined in the 2012 Edition of the 'Australasian Code for Reporting of Exploration Results, Mineral Resources and Ore Reserve'. Mr. Grayson consents to the inclusion in the release of the matters based on his information in the form and context in which it appears.

Forward Looking Statements

This announcement may contain certain forward-looking statements and projections. Such forward-looking statements/projections are estimates for discussion purposes only and should not be relied upon. Forward-looking statements/projections are inherently uncertain and may therefore differ materially from results ultimately achieved. Evergold Minerals Limited does not make any representations and

provides no warranties concerning the accuracy of the projections and disclaims any obligation to update or revise any forward-looking statements/projects based on new information, future events or otherwise except to the extent required by applicable laws.

Listing Rule 5.23.2

In respect of this announcement, where EG1 has referred to, or referenced, prior ASX market announcements, EG1 confirms that it is not aware of any new information or data that materially affects the information included in the relevant market announcement (unless otherwise stated) and, in the case of estimates of mineral resources or ore reserves, that all material assumptions and technical parameters underpinning the estimates in the prior relevant market announcement continue to apply and have not materially changed.

APPENDIX 1 – Drill hole collar details from previous drilling programs at Craig's Rest

Hole	Company	Year	Type	Depth_m	East_GDA94	North_GDA94	RL	Azimuth	Dip
GW0001	Aztec	1985	RC	43	316349	6868254	500	200	-60
GW0002	Aztec	1985	RC	48	316376	6868253	500	200	-60
GW0003	Aztec	1985	RC	46	316423	6868238	500	200	-60
GW0004	Aztec	1985	RC	43	316443	6868225	500	200	-60
GW0005	Aztec	1985	RC	39	316467	6868221	500	196	-60
GW0006	Aztec	1985	RC	59	316534	6868197	500	200	-60
GW0007	Aztec	1985	RC	45	316254	6868303	500	200	-60
GW0008	Aztec	1985	RC	38	316204	6868329	500	200	-60
GW0009	Aztec	1985	RC	35	316179	6868292	500	200	-60
GW0010	Aztec	1985	RC	33	316192	6868320	500	200	-60
GW0011	Aztec	1985	RC	29	316120	6868362	500	200	-60
GW0012	Aztec	1985	RC	30	316092	6868377	500	200	-60
GW0013	Aztec	1985	RC	33	316055	6868392	500	200	-60
GW0014	Aztec	1985	RC	38	316227	6868315	500	200	-60
GW0015	Aztec	1985	RC	45	316282	6868292	500	200	-60
GW0016	Aztec	1985	RC	48	316309	6868281	500	200	-60
GW0017	Aztec	1985	RC	39	316330	6868272	500	200	-60
GW0018	Aztec	1985	RC	71	316281	6868325	500	200	-60
GW0019	Aztec	1985	RC	97	316337	6868329	500	200	-60
GW0020	Aztec	1985	RC	87	316382	6868300	500	200	-60
GW0021	Aztec	1985	RC	43	316399	6868243	500	200	-60
GW0022	Aztec	1985	RC	94	316426	6868282	500	200	-60
GW0023	Aztec	1985	RC	21	316534	6868173	500	200	-60
GW0024	Aztec	1985	RC	27	316507	6868135	500	200	-55
GW0025	Aztec	1985	RC	12	316473	6868171	500	195	-60
GWRC0001	Mt Edon	1994	RC	60	316463	6868189	500	180	-60
GWRC0002	Mt Edon	1994	RC	60	316475	6868217	500	180	-60
GWRC0003	Mt Edon	1994	RC	60	316373	6868208	500	180	-60
GWRC0004	Mt Edon	1994	RC	60	316379	6868238	500	180	-60
GWRC0005	Mt Edon	1994	RC	78	316388	6868268	500	180	-60
GWRC0006	Mt Edon	1994	RC	60	316268	6868241	500	180	-60
GWRC0007	Mt Edon	1994	RC	60	316282	6868273	500	180	-60
GWRC0008	Mt Edon	1994	RC	90	316293	6868302	500	180	-60
GWRC0009	Mt Edon	1994	RC	60	316134	6868322	500	180	-60
GWRC0010	Mt Edon	1994	RC	60	316175	6868336	500	180	-60
GWRC0011	Mt Edon	1994	RC	60	316203	6868348	500	180	-60

GWRC0012	Mt Edon	1994	RC	60	316083	6868312	500	180	-60
GWRC0013	Mt Edon	1994	RC	60	316092	6868337	500	180	-60
GWRC0014	Tarmoola	1998	RC	130	316378	6868350	500	200	-60
GWRC0015	Tarmoola	1998	RC	87	316309	6868341	500	200	-60
GWRB014	Tarmoola	2000	RAB	55	317367	6867273	500	180	-60
GWRB015	Tarmoola	2000	RAB	5	317367	6867286	500	180	-60
GWRB016	Tarmoola	2000	RAB	31	317367	6867298	500	180	-60
GWRB017	Tarmoola	2000	RAB	29	317367	6867311	500	180	-60
GWRB018	Tarmoola	2000	RAB	33	317367	6867323	500	180	-60
GWRB019	Tarmoola	2000	RAB	32	317367	6867336	500	180	-60
GWRB001	Tarmoola	2002	RAB	25	317017	6867253	500	180	-60
GWRB002	Tarmoola	2002	RAB	31	317017	6867266	500	180	-60
GWRB003	Tarmoola	2002	RAB	34	317017	6867278	500	180	-60
GWRB004	Tarmoola	2002	RAB	36	317017	6867291	500	180	-60
GWRB005	Tarmoola	2002	RAB	45	317017	6867303	500	180	-60
GWRB006	Tarmoola	2002	RAB	35	317017	6867316	500	180	-60
GWRB007	Tarmoola	2002	RAB	26	317017	6867328	500	180	-60
GWRB008	Tarmoola	2002	RAB	27	316917	6867278	500	180	-60
GWRB009	Tarmoola	2002	RAB	35	316917	6867291	500	180	-60
GWRB010	Tarmoola	2002	RAB	44	316917	6867303	500	180	-60
GWRB011	Tarmoola	2002	RAB	44	316917	6867316	500	180	-60
GWRB012	Tarmoola	2002	RAB	50	316917	6867328	500	180	-60
GWRB013	Tarmoola	2002	RAB	31	316917	6867341	500	180	-60
CGRC001	Tarmoola	2000	RC	76	317257	6867328	500	180	-60
CGRC002	Tarmoola	2000	RC	76	317217	6867333	500	180	-60
CGRC003	Tarmoola	2000	RC	66	317177	6867333	500	180	-60
CGRC004	Tarmoola	2000	RC	70	317097	6867328	500	180	-60
CGRC005	Tarmoola	2000	RC	70	317297	6867323	500	180	-60
CGRC006	Tarmoola	2000	RC	100	317257	6867354	500	180	-60
KLRC001	Tarmoola	2000	RC	46	317352	6867693	500	180	-60
KLRC002	Tarmoola	2000	RC	76	317352	6867718	500	180	-60
KLRC003	Tarmoola	2000	RC	70	317332	6867708	500	180	-60
KLRC004	Tarmoola	2000	RC	76	317247	6867733	500	180	-60
KLRC005	Tarmoola	2000	RC	76	317207	6867743	500	180	-60
GDWRC016	Terrain	2007	RC	120	316388	6868318	500	200	-60
GDWRC017	Terrain	2007	RC	120	316430	6868303	500	200	-60

APPENDIX 2 – Drill hole gold significant intercepts from previous drilling

Hole	Company	Drill Type	Year	A_Report	Cut-Off	From	To	Width	Au g/t
GW1	Aztec	RC	1985	15541	1 g/t Au	9	10	1	1.07
GW7	Aztec	RC	1985	15541	1 g/t Au	19	20	1	2.05
GW7	Aztec	RC	1985	15541	1 g/t Au	31	33	2	1.39
GW8	Aztec	RC	1985	15541	1 g/t Au	27	28	1	3.74
GW14	Aztec	RC	1985	15541	1 g/t Au	26	27	1	2.19
GW15	Aztec	RC	1985	15541	1 g/t Au	30	34	4	4.47
GW15	Aztec	RC	1985	15541	1 g/t Au	31	32	1	14.85
GW16	Aztec	RC	1985	15541	1 g/t Au	20	21	1	1.37
GW17	Aztec	RC	1985	15541	1 g/t Au	33	35	2	1.07
GW19	Aztec	RC	1985	15541	1 g/t Au	71	75	4	1.16
GW19	Aztec	RC	1985	15541	1 g/t Au	71	72	1	2.14
GW19	Aztec	RC	1985	15541	1 g/t Au	86	93	7	1.01
GW20	Aztec	RC	1985	15541	1 g/t Au	61	69	8	2.17
GW20	Aztec	RC	1985	15541	1 g/t Au	62	65	3	4.64
GW20	Aztec	RC	1985	15541	1 g/t Au	76	81	5	3.77
GW20	Aztec	RC	1985	15541	1 g/t Au	76	78	2	8.51
GW22	Aztec	RC	1985	15541	1 g/t Au	71	76	5	1.29
GW22	Aztec	RC	1985	15541	1 g/t Au	72	73	1	3.08
GWRC04	Mt Edon GM	RC	1992	48954	0.5 g/t Au	18	24	6	0.91
GWRC05	Mt Edon GM	RC	1992	48954	0.5 g/t Au	50	54	4	3.81
GWRC07	Mt Edon GM	RC	1992	48954	0.5 g/t Au	2	12	10	2.4
GWRC07	Mt Edon GM	RC	1992	48954	0.5 g/t Au	16	20	4	1.23
GWRC010	Mt Edon GM	RC	1992	48954	0.5 g/t Au	14	16	2	1.11
GWRC011	Mt Edon GM	RC	1992	48954	0.5 g/t Au	50	52	2	1
GWRC014	Tarmoola	RC	1998	55248	0.5 g/t Au	106	110	4	2.7
GWRC014	Tarmoola	RC	1998	55248	0.5 g/t Au	124	128	4	0.73
GWRC015	Tarmoola	RC	1998	55248	0.5 g/t Au	76	80	4	1.55
GWRB016	Tarmoola	RAB	2000	62611	0.5 g/t Au	9	11	2	1.26
GWRB017	Tarmoola	RAB	2000	62611	0.5 g/t Au	27	29	2	0.81
GWRB019	Tarmoola	RAB	2000	62611	0.5 g/t Au	30	32	2	0.83
KLRC001	Tarmoola	RC	2000	62611	1 g/t Au	26	31	5	2.03
KLRC002	Tarmoola	RC	2000	62611	1 g/t Au	58	60	2	26.6
CGRC004	Tarmoola	RC	2000	62611	1 g/t Au	11	15	4	2.04
CGRC005	Tarmoola	RC	2000	62611	1 g/t Au	17	21	4	1.13
GWRB003	Tarmoola	RAB	2002	64066	1 g/t Au	17	21	4	1.15
GWRB005	Tarmoola	RAB	2002	64066	1 g/t Au	16	21	5	57.9
CGRC006	Tarmoola	RC	2002	64066	1 g/t Au	51	53	2	2.42
GDWRC016	Terrain	RC	2007	74681	1 g/t Au	78	79	1	8.49
GDWRC016	Terrain	RC	2007	74681	1 g/t Au	94	95	1	1.31
GDWRC017	Terrain	RC	2007	74681	1 g/t Au	92	93	1	12.3

APPENDIX 3 – JORC Code, 2012 Edition – Table 1

Section 1 – Sampling Techniques and Data

(Criteria in this section apply to all succeeding sections.)

Criteria	JORC Code explanation	Commentary
Sampling techniques	<i>Nature and quality of sampling. Include reference to measures taken to ensure sample representivity. Aspects of determination of mineralisation that are Material to the Public Report.</i>	<ul style="list-style-type: none"> • A total of 37 x reverse circulation (RC) drill holes were completed by Infinity Mining Ltd in the Central Goldfields of WA, in late January to early March 2023. • Holes were drilled to depths ranging from 78 to 132 m. • Holes were drilled at various azimuths, with dips largely at -60 degrees. • RC drilling was used to obtain 1 m samples from the rig-mounted cyclone, from which a 2-3 kg representative split sample was collected into calico sample bags via a cone splitter. • A total of 2286 RC drill chip samples were collected, including 1 m RC samples within logged zones of interest, plus 4 m composite samples outside those zones. • Samples were dispatched to Jinning Laboratory in Perth for analysis. • Calico bag samples were dried, crushed and pulverised. • Gold was analysed by 50g charge for fire assay with AAS finish. • Samples were also assayed for multi-element analysis by ICP-OES, for a 33-element suite (results pending). <p>All other Historic Drilling was completed to industry best practice</p>
Drilling techniques	<i>Drill type and details.</i>	<ul style="list-style-type: none"> • RC drilling was conducted by iDrilling Australia using a Hydco 350 RC rig with a 5.5-inch face sampling hammer bit. • PVC casing was used at each hole to protect the collar. • Drilling methods and equipment were to best industry standard. <p>All other Historic Drilling was completed to industry best practice</p>
Drill sample recovery	<i>Method of recording and assessing sample recoveries. Measures taken to maximise recovery. Whether a relationship exists between recovery and grade.</i>	<ul style="list-style-type: none"> • Recovery can be monitored by observing the consistency of drill chip amounts collected for each 1 m sample. • No significant loss of recovery was observed in any 1 m intervals during the program. • Typical recoveries for this RC program are estimated to be in excess of 80%. • Samples were largely dry, with only a few samples being moist. • No significant groundwater was encountered that would impact recovery.

Criteria	JORC Code explanation	Commentary
<i>Logging</i>	<i>Whether samples have been geologically logged. Whether logging is qualitative or quantitative. Total length and percentage logged.</i>	<p>All other Historic Drilling was completed to industry best practice</p> <ul style="list-style-type: none"> • Geological logs were completed for all drill holes by an experienced geologist. • The lithology, weathering, oxidation, colour, grainsize, texture, alteration, veining, structure and mineralisation were recorded in digital spreadsheets at the time of drilling. • Logs are largely qualitative in nature using company logging codes. • Logging of sulphide mineralisation and quartz veining was quantitative. • All intervals drilled were logged.
<i>Sub-sampling techniques and sample preparation</i>	<i>If non-core, whether riffled, tube sampled, rotary split. Nature, quality and appropriateness of sample preparation. QAQC procedures adopted.</i>	<p>All other Historic Drilling was completed to industry best practice</p> <ul style="list-style-type: none"> • RC drilling was used to obtain 1 m split samples from the rig-mounted cyclone, from which a 2-3 kg split sample was collected into pre-numbered calico bags using a cone splitter. • A total of 2286 RC drill chip samples were collected, including 1 m RC samples within logged zones of interest containing quartz veining and mineralisation/alteration, plus 4 m composite samples outside those zones. • No drilled intervals were left unsampled. • Back-up samples for every 1 m drill interval were also collected and securely stored. • The 4 m composite samples were collected using a manual sample spear and sent to the laboratory. If any assays from the 4 m composite samples contain anomalous results, these will be re-assayed at 1 m intervals. • All samples were transported to Jinning Laboratory in Perth for analysis. • Samples were dried, crushed and pulverised to nominal 85% passing 75 microns, prior to assaying.
<i>Quality of assay data and laboratory tests</i>	<i>Nature, quality and appropriateness of assaying and laboratory procedures. QAQC procedures and whether acceptable levels of accuracy and precision have been established.</i>	<p>All other Historic Drilling was completed to industry best practice</p> <ul style="list-style-type: none"> • All laboratory assaying was completed by the Jinning Testing and Inspection Laboratory, Perth, WA. • RC drill samples submitted to the Lab were dried, crushed and pulverised to produce a 50 g charge for fire assay for gold, with an AAS finish (code FA50A). Detection limit of 0.01 g/t Au. • Samples were also analysed by Mixed Acid Digest ICP-OES for a 33-element suite (results pending). • Infinity QAQC protocols were implemented. • QAQC samples were inserted into the sample sequence, with standards, blanks and duplicates in the ratio of approximately 1:25. • All QAQC samples will be evaluated when assays are received.

Criteria	JORC Code explanation	Commentary
<p><i>Verification of sampling and assaying</i></p>	<p><i>Verification of significant intersections. Use of twinned holes. Documentation of primary data. Discuss any adjustment to assay data.</i></p>	<ul style="list-style-type: none"> • Internal laboratory repeats and QAQC samples were also reported by the Laboratory. • For the assays received to date, all QAQC samples fall within expected, standard tolerance limits. <p>All other Historic Drilling was completed to industry best practice</p> <ul style="list-style-type: none"> • All drill hole data was collected electronically and checked by an experienced geologist. • Digital drill data has been safely stored on Infinity's server. • No twinned holes were drilled. • No QAQC issues were identified in the results recovered to date.
<p><i>Location of data points</i></p>	<p><i>Accuracy and quality of surveys used to locate drill holes. Specification of grid system. Quality of topographic control.</i></p>	<p>All other Historic Drilling was completed to industry best practice</p> <ul style="list-style-type: none"> • All collar locations were initially recorded with a handheld Garmin 65 GPS with a +/- 3m to 5m accuracy. • All collars were then surveyed using an RTK Differential GPS with a 40 mm level of accuracy. • GDA94 datum and MGA zone 51 was used. • A table of drill hole collar details is included in the body of the report for all 37 drill holes completed. • Maps showing drill hole locations for key projects where significant intercepts were reported are included in the body of the report.
<p><i>Data spacing and distribution</i></p>	<p><i>Data spacing for reporting of Exploration Results. Whether sufficient for Mineral Resource estimation. Whether sample compositing has been applied.</i></p>	<p>All other Historic Drilling was completed to industry best practice</p> <ul style="list-style-type: none"> • Drill holes were designed to test a variety of geochemical, geophysical and structural targets defined in 2022, for Archaean shear-hosted gold systems and VMS base-metal deposits. • Drill holes were generally designed to intersect the observed mineralisation present at surface associated with old mine workings, at various depths below surface, to test the depth and strike extents of the mineralisation. • All drill holes were designed to drill across strike at roughly 90 degrees to the strike of the main structure of interest. • The drill spacing is variable but appropriate for the mineralisation target.
<p><i>Orientation of data in relation to geological structure</i></p>	<p><i>Whether orientation of sampling achieves unbiased sampling of possible structures.</i></p>	<p>All other Historic Drilling was completed to industry best practice</p> <ul style="list-style-type: none"> • Holes were generally angled to intersect the interpreted depth extension of the target structures, at the optimal orientation.

Criteria	JORC Code explanation	Commentary
<i>Sample security</i>	<i>Measures taken to ensure sample security.</i>	<ul style="list-style-type: none"> • No sampling bias due to drilling orientation is known at this time. <p>All other Historic Drilling was completed to industry best practice</p> <ul style="list-style-type: none"> • The drill samples were placed in bulk bags and transported by Infinity Mining staff to Kalgoorlie. A local transport company was used to deliver the samples to Jinning Laboratory in Perth. • All samples were checked on arrival by the Laboratory. <p>All other Historic Drilling was completed to industry best practice</p>
<i>Audits or reviews</i>	<i>Results of any audits or reviews of sampling techniques and data.</i>	<p>No external audits or reviews of historical sampling techniques or assay data have been reported. Historical datasets have been reviewed internally by Evergold Minerals.</p> <p>2026 Geochemical Survey: No external audit has been completed. Data has been reviewed internally by the Competent Person and validated against laboratory certificates and field records.</p>

Section 2 – Reporting of Exploration Results

(Criteria listed in the preceding section also apply to this section.)

Criteria	JORC Code explanation	Commentary
<i>Mineral tenement and land tenure status</i>	<i>Type, reference name/number, location and ownership. Security of tenure and known impediments.</i>	<ul style="list-style-type: none"> The Central Goldfields Projects is located in the Leonora District of WA. Tenements subject to this report: Craig's Rest (M37/1377, E37/1442, E37/1571, E37/1589, P37/3468, P37/9875, P37/9728, P37/9727, P37/9725, P37/9726); Queens Central (E37/1592); Barlow's Gully (M37/1359); Chicago (M37/983); Copper Mine (P37/9162); Randwick (M37/1316, M37/1343, P37/8966, P37/8968–P37/8970, P37/9320–P37/9325); Victor Bore (M37/1349, M37/1368, P37/8576, P37/9611, P37/9329, P37/9763); Camel (M37/1367, P37/8325); Great Northern (M37/1360, P37/8310) All tenements are held by Evergold Minerals Limited (or Subsidiaries) and are in good standing.
<i>Exploration done by other parties</i>	<i>Acknowledgment and appraisal of exploration by other parties.</i>	<ul style="list-style-type: none"> Numerous old shallow workings and prospecting pits occur at most of the projects. The age of historical mining is not well constrained. Historical exploration includes geochemical sampling and drilling by a range of companies over the past 4 decades. Victor Bore – GME Resources. Great Northern – Melita Mining (1987), North Limited (1990s). Barlow's Gully – No previous exploration records. Coppermine – Kulim Limited (1984), Orion Resources (1995), Pacmin (1998), Jupiter Mines (2007), Bligh Resources (2010). Camel – Sons of Gwalia (1986), Endeavour Resources (1989), St Barbara Mines (1993), Goldfields Exploration (1993), Teck Cominco (2005), Medusa (2006). Craig's Rest – Katalina Mining (1987), Aztec Exploration (1990), Mount Edon (1992), Tarmoola Australia (1997). Chicago – Jupiter Mines (2008), Bligh Resources (2014). Details are documented within the Infinity Prospectus dated October 2021 and previous ASX Announcements released by Infinity.
<i>Geology</i>	<i>Deposit type, geological setting and style of mineralisation.</i>	<ul style="list-style-type: none"> The Central Goldfields tenements are located in the Leonora District. The projects lie within greenstone belts associated with several NW-trending faults such as the Ursus Fault Zone. The tenements are in the same area as a number of significant gold deposits such as King of the Hills and Kailis. The greenstones are also intruded by younger Archean granites. The projects are prospective for orogenic Archean shear-hosted gold systems and VMS base-metal deposits.
<i>Drill hole Information</i>	<i>A summary of all information material to the understanding of the exploration results.</i>	<ul style="list-style-type: none"> All relevant drillhole information can be found in Appendix 2 of this report.

Criteria	JORC Code explanation	Commentary
<i>Data aggregation methods</i>	<i>Weighting averaging techniques, grade truncations, cut-off grades. Procedure for aggregation of short high-grade and longer low-grade intervals. Assumptions for metal equivalents.</i>	<ul style="list-style-type: none"> • All gold intercepts quoted are weighted averages Gold (g/t), using a cut-off of 0.1 g/t Au. • Where gold repeats were recorded, the first sample was used to calculate the weighted average grade. • No assays below the cut-off (internal 'waste') were included in the intercepts.
<i>Relationship between mineralisation widths and intercept lengths</i>	<i>These relationships are important for reporting Exploration Results. If geometry is not known, a clear statement should be made.</i>	<ul style="list-style-type: none"> • The gold-bearing intervals quoted in the report are close to being perpendicular but are not true widths.
<i>Diagrams</i>	<i>Appropriate maps and sections (with scales) and tabulations of intercepts.</i>	<ul style="list-style-type: none"> • All appropriate diagrams are in the body of this report.
<i>Balanced reporting</i>	<i>Where comprehensive reporting is not practicable, representative reporting of both low and high grades should be practiced.</i>	<ul style="list-style-type: none"> • The results provide sufficient data density and structure to report an inferred resource within 2 prospect areas: Craig's Rest and Victor Bore.
<i>Other substantive exploration data</i>	<i>Other exploration data if meaningful and material.</i>	<ul style="list-style-type: none"> • There is no other exploration data that is considered to be material to the results reported herein.
<i>Further work</i>	<i>Nature and scale of planned further work. Diagrams highlighting areas of possible extensions.</i>	<ul style="list-style-type: none"> • Further work is presented in the 'Next Steps' section of the ASX Release Body.