

Further High-Grade Drilling Results at Mt Dimer Taipan Gold Project

Highlights

- 3,078m grade control RC drilling program completed to support mine planning and optimisation at the Mt Dimer Taipan Gold Project
- Multiple high-grade gold intersections returned including:
 - Hole TPG0110: 7m @ 16.1 g/t Au (9–16m) inc., 2m @ 43.6 g/t Au from 10m
 - Hole TPG0086: 12m @ 6.2 g/t Au (10–22m) inc., 4m @ 15.8 g/t Au from 10m
 - Hole TPG0105: 6m @ 8.3 g/t Au (17–23m) inc., 2m @ 17.8 g/t Au from 19m
 - Hole TPG0066: 6m @ 7.6 g/t Au (22–28m) inc., 2m @ 15.8 g/t Au from 23m
 - Hole TPG0069: 4m @ 12.9 g/t Au (14–18m)
 - Hole TPG0053: 2m @ 13.7 g/t Au (19–21m)
 - Hole TPG0108: 3m @ 8.7 g/t Au (6–9m)
 - Hole TPG0099: 7m @ 4 g/t Au (39–46m)
- Mining activities continue to progress with more than 90,000 tonnes of mineralised material delivered to the ROM pad
- Updated Mineral Resource Estimate targeted for Q3, 2026
- Mt Dimer mineralisation remains open to the north and south, highlighting potential for future resource growth

Everest Metals Corporation Ltd (ASX: EMC) (“EMC” or “the Company”) is pleased to announce further high-grade gold results from a recently completed grade control, reverse circulation (RC) drilling program at its 100%-owned Mt Dimer Taipan Gold Project (“Mt Dimer”) in Western Australia.

Located approximately 150 km northwest of Kalgoorlie and 120 km northeast of Southern Cross in Western Australia’s Goldfields, Mt Dimer forms a key part of EMC’s strategy to unlock value from its precious metals portfolio through a low-capital-intensity mining and toll-treatment model. Everest is progressing toward its first ore processing campaign while continuing to optimise mine planning and advance an Updated Mineral Resource Estimate targeted for Q3, 2026.

EMC's Executive Chairman and CEO Mark Caruso commented:

"The results returned from this program provide further confidence in both the geological model and continuity of mineralisation within the Mt Dimer Taipan pit. The drilling has generated valuable data that will support ongoing mine planning, ore scheduling and the upcoming Mineral Resource update. We are encouraged by the progress achieved to date, with MEGA continuing to advance mining activities safely and efficiently as the project moves toward its first processing campaign."

The Mt Dimer Taipan deposit hosts an Inferred JORC Mineral Resource Estimate of 722,000 tonnes at 2.1 g/t Au for 48,545 ounces of gold and 3.84 g/t Ag for 89,011 ounces of silver¹.

Mining has been underway since January 2026 under the Right to Mine Agreement with MEGA Resources Pty Ltd ("MEGA"). The initial campaign targets extraction of approximately 200,000 tonnes of ore, aiming to deliver near-term cashflow through toll-treatment processing at a nearby facility.



Figure 1: Mt Dimer Taipan pit, looking northwest

¹ ASX: TSC announcement; Maiden JORC Resource Defined at Mt Dimer Gold and Silver Project in WA, dated 31 May 2021.

GRADE CONTROL DRILLING RESULTS

Grade control drilling was completed by MEGA in May 2026 and comprised 85 close spaced RC holes for a total of 3,078 metres. The program was designed to infill the existing drill pattern at the base of the Mt Dimer pit (~450 mRL) within the current pit design, providing increased geological confidence and detailed data to support mine planning and ore scheduling (Figure 2 and 3).

Several holes were extended beyond the interpreted limits of known mineralisation to test for potential extensions at depth and ensure any additional mineralised zones were identified during mining operations.

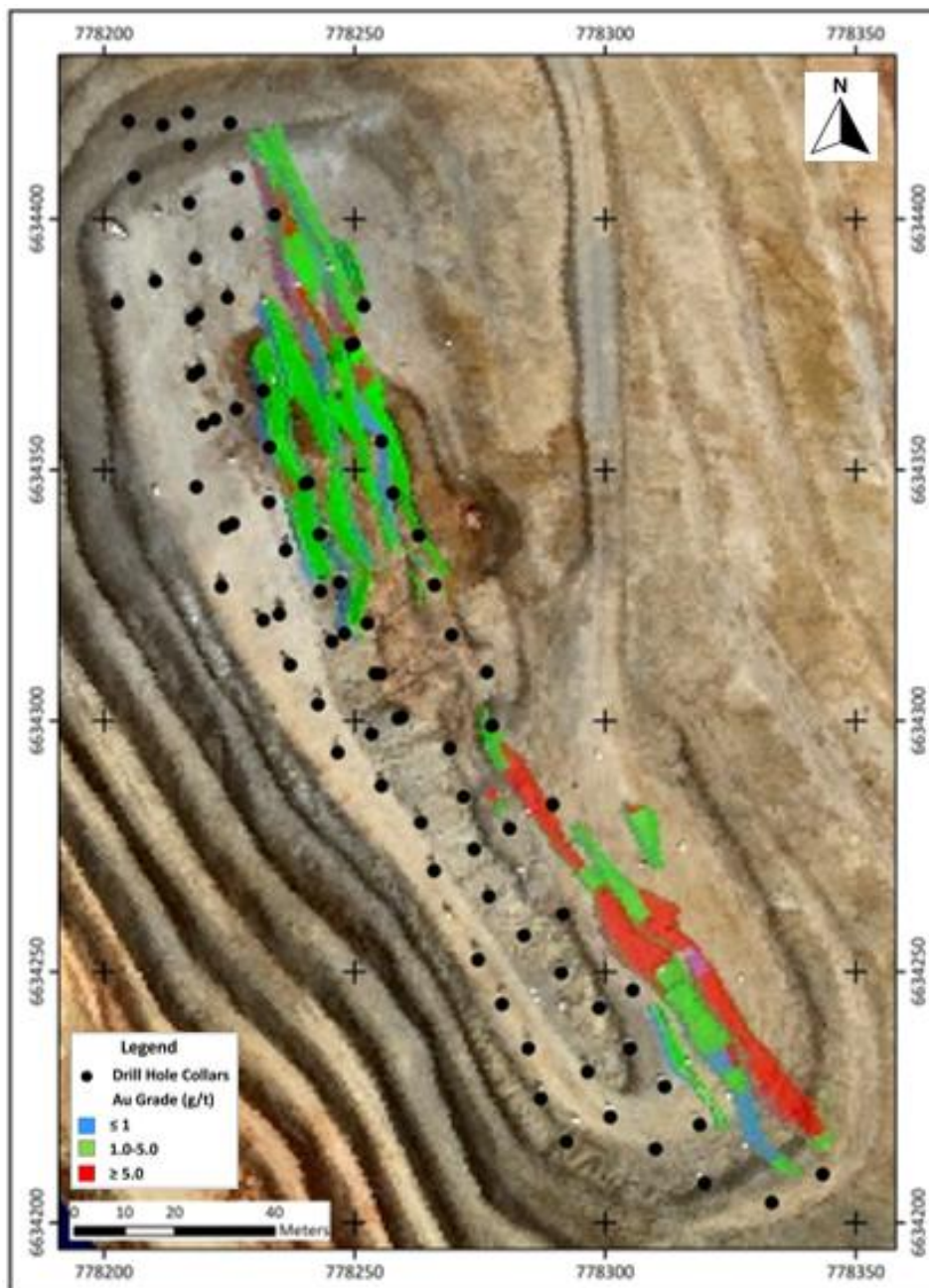


Figure 2: Location of infill grade control RC drill holes plotted on the floor of the Mt Dimer Taipan Pit

Samples were collected at 1-metre intervals directly from the cyclone from surface to end-of-hole for all RC drill holes. A total of 3,133 samples (including QA/QC samples) were submitted to Bureau Veritas Laboratory in Kalgoorlie for analysis, with gold assays completed using the fire assay method (FA1).

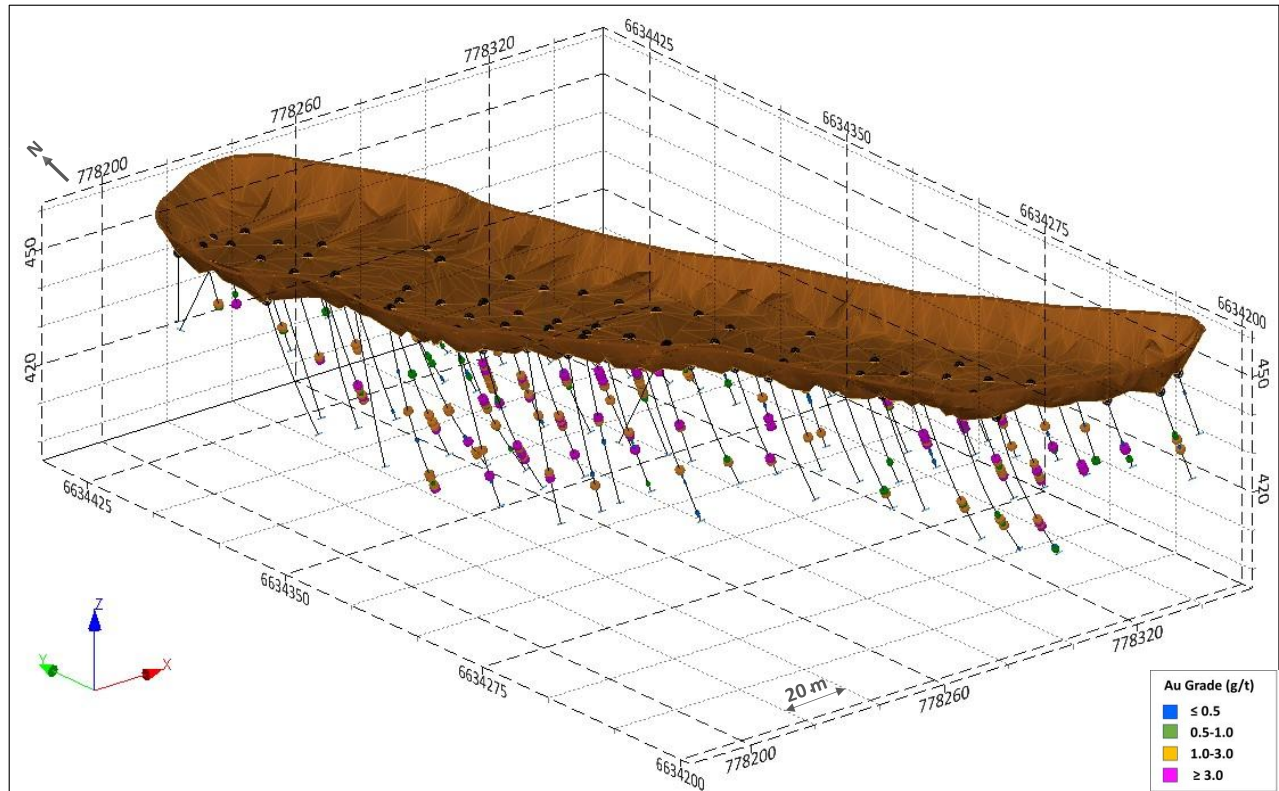


Figure 3: Long section illustrating grade control RC drilling completed from the floor of the Mt Dimer Taipan pit, looking northeast

The grade control drilling program returned multiple high-grade gold intersections across the current pit design, confirming the continuity of mineralisation and providing additional confidence for mine planning and ore scheduling activities. Significant results included:

Table 1: Significant grade control drillhole results of Mt Dimer Taipan project

Hole ID	Significant Intersection
TPGC0053	2m @ 13.7g/t Au from 19m
TPGC0054	3m @ 5.1g/t Au from 25m
TPGC0056	4m @ 6.6g/t Au from 43m
TPGC0057	5m @ 2.3g/t Au from 28m
TPGC0061	5m @ 3.3g/t Au from 12m
TPGC0063	4m @ 5.2g/t Au from 16m

Hole ID	Significant Intersection
TPGC0066	6m @ 7.6g/t Au from 22m, including 2m @ 15.8g/t Au from 23m
TPGC0069	4m @ 12.9g/t Au from 14m
TPGC0073	4m @ 4.1g/t Au from 11m
TPGC0075	2m @ 3.4g/t Au from 35m
TPGC0081	2m @ 4.9g/t Au from 27m
TPGC0082	4m @ 2.7g/t Au from 11m and 3m @ 1.8g/t Au from 18m
TPGC0085	3m @ 3.0g/t Au from 29m and 1m @ 3.4g/t Au from 36m
TPGC0086	12m @ 6.2g/t Au from 10m, including 4m @ 15.8g/t Au from 10m
TPGC0091	7m @ 3.1g/t Au from 14m
TPGC0095	5m @ 3.0g/t Au from 28m
TPGC0096	4m @ 5.5g/t Au from 17m
TPGC0097	3m @ 6.2g/t Au from 15m
TPGC0099	7m @ 4.0g/t Au from 39m
TPGC0100	5m @ 4.0g/t Au from 19m and 2m @ 6.7g/t Au from 27m
TPGC0104	5m @ 3.2g/t Au from 27m
TPGC0105	6m @ 8.3g/t Au from 17m, including 2m @ 17.8g/t Au from 19m
TPGC0106	2m @ 5.32g/t Au from 12m and 2m @ 1.5g/t Au from 17m
TPGC0108	3m @ 8.7g/t Au from 6m
TPGC0110	7m @ 16.1g/t Au from 9m, including 2m @ 43.6g/t Au from 10m
TPGC0124	2m @ 3.4g/t Au from 40m and 4m @ 2.1g/t Au from 43m

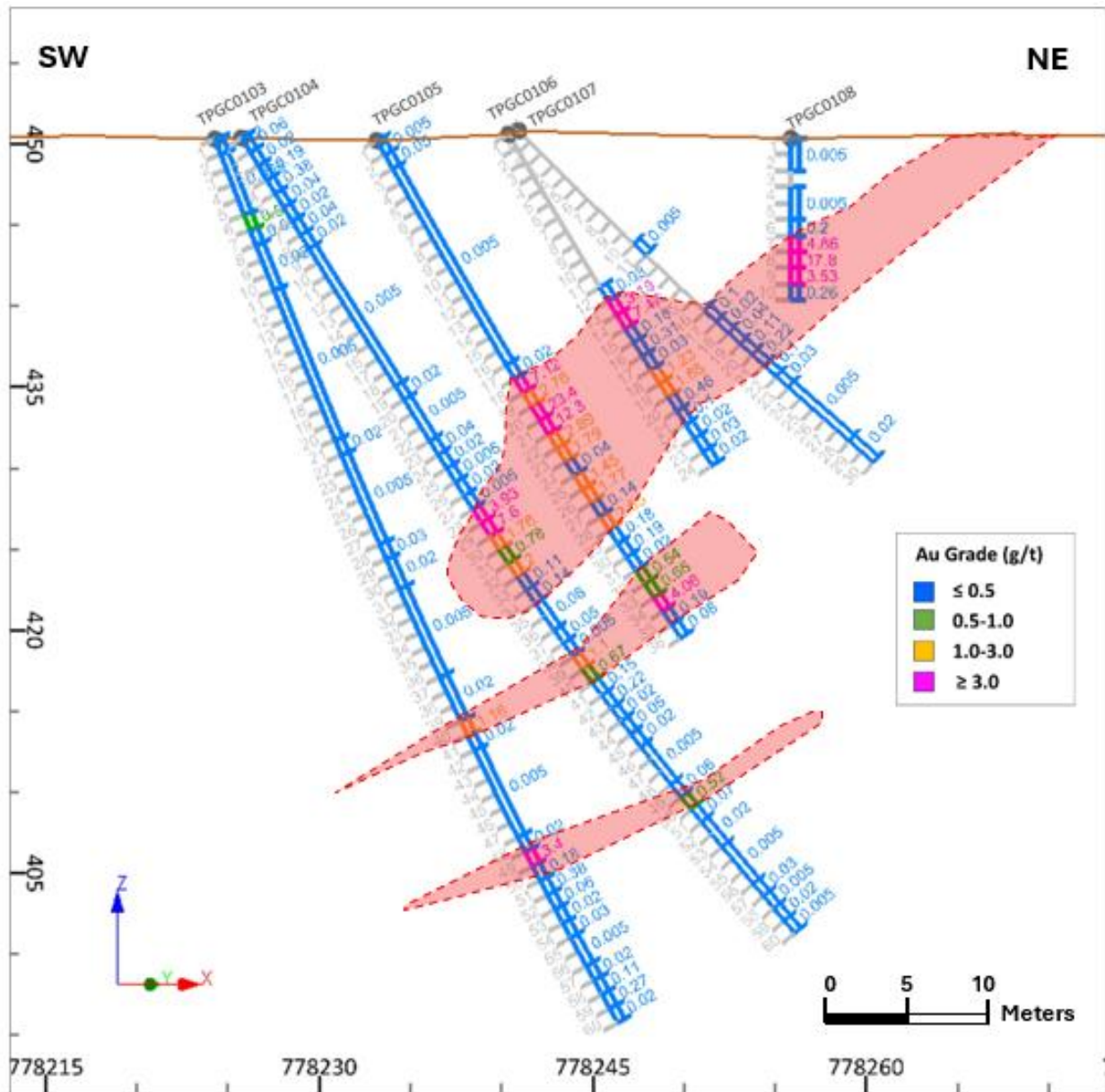


Figure 4: Cross-section illustrating gold grade distribution and mineralised zones along a drill line in the floor of the Mt Dimer Taipan pit

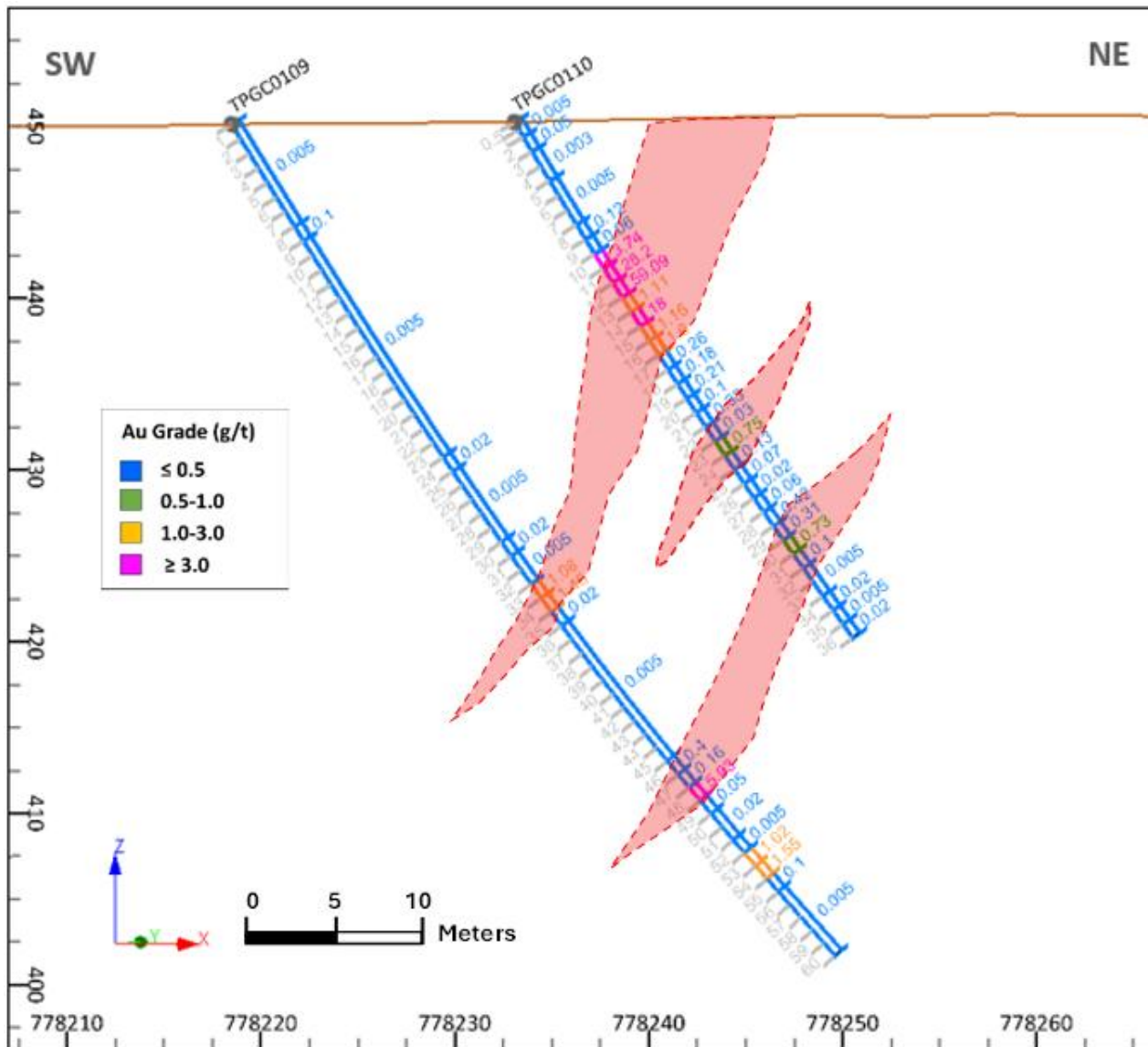


Figure 5: Cross-section showing gold grade distribution and mineralisation zones along a drill line in the northern part of the Mt Dimer Taipan pit

Table 2 presents all 1-metre drill sample intervals that returned gold grades exceeding 0.5 g/t Au, highlighting the significant zones of gold mineralisation encountered.

Table 2: Mt Dimer Taipan grade control drillhole results more than 0.5g/t Au

Hole-ID	From (m)	To (m)	Interval (m)	Au (g/t)
TPGC0136	9	10	1	1.29
TPGC0133	12	13	1	1.78
	13	14	1	0.81
	17	18	1	2
TPGC0131	7	8	1	2.42
	8	9	1	1.67
TPGC0129	33	34	1	1.63
	34	35	1	3.72
TPGC0130	21	22	1	0.92
TPGC0138	22	23	1	1.63
	23	24	1	0.86
TPGC0139	11	12	1	0.66
	19	20	1	0.78
TPGC0135	19	20	1	0.61
	23	24	1	3.1
TPGC0132	26	27	1	2.11
	27	28	1	0.95
TPGC0124	40	41	1	4.21
	41	42	1	2.73
	43	44	1	0.74
	44	45	1	1.86
	45	46	1	3.4
	46	47	1	2.48
TPGC0125	27	28	1	1.91
	28	29	1	0.5
	29	30	1	2.54
TPGC0115	5	6	1	0.56
TPGC0108	6	7	1	4.86
	7	8	1	17.8
	8	9	1	3.53
TPGC0102	5	6	1	0.65
TPGC0093	9	10	1	1.23
TPGC0114	17	18	1	1.02
	19	20	1	0.64
	20	21	1	5.38
	23	24	1	0.92
	26	27	1	3.17
	27	28	1	2.76
	31	32	1	0.52
TPGC0106	12	13	1	3.19
	13	14	1	7.47
	17	18	1	1.23
	18	19	1	1.85
TPGC0113	17	18	1	1.74
	27	28	1	0.76
	28	29	1	0.54
	30	31	1	0.55
TPGC0109	32	33	1	1.08
	33	34	1	1.46
	47	48	1	5.93
	52	53	1	1.02
	53	54	1	1.55
	TPGC0110	9	10	1
10		11	1	28.2
11		12	1	59.1
12		13	1	1.11
13		14	1	18
14		15	1	1.16
15		16	1	1.6
22		23	1	0.75
29		30	1	0.73
35		36	1	4.6
TPGC0075	36	37	1	2.21
	17	18	1	1.54
TPGC0076	25	26	1	5.01
	28	29	1	6.11
	37	38	1	0.77
TPGC0077	38	39	1	1.57
	39	40	1	0.51
TPGC0078	15	16	1	0.82
TPGC0103	39	40	1	1.16
	48	49	1	3.4
TPGC0104	27	28	1	3.93
	28	29	1	7.6
	29	30	1	1.78
	30	31	1	0.78
	31	32	1	2
	38	39	1	1.1
	39	40	1	0.67
	49	50	1	0.52
TPGC0105	17	18	1	7.12
	18	19	1	2.76
	19	20	1	23.4
	20	21	1	12.3
	21	22	1	2.89
	22	23	1	1.79
	24	25	1	1.45
	25	26	1	1.77
	27	28	1	2.55
	31	32	1	0.54
	32	33	1	0.65
	33	34	1	4.06
TPGC0111	32	33	1	1.34
	54	55	1	2.47

Hole-ID	From (m)	To (m)	Interval (m)	Au (g/t)
	31	32	1	0.8
TPGC0097	15	16	1	17
	16	17	1	1.29
	17	18	1	0.55
TPGC0095	28	29	1	1.1
	29	30	1	3.78
	30	31	1	1.78
	31	32	1	6.37
	32	33	1	2.25
TPGC0096	44	45	1	3.38
	17	18	1	4.59
	18	19	1	13.7
	19	20	1	1.88
TPGC0092	20	21	1	2.1
	22	23	1	0.72
TPGC0087	12	13	1	0.54
	13	14	1	1.58
TPGC0088	16	17	1	0.58
	17	18	1	0.91
	21	22	1	6.23
TPGC0086	10	11	1	7.26
	11	12	1	7.02
	12	13	1	43.6
	13	14	1	5.45
	14	15	1	0.88
	15	16	1	1.34
	16	17	1	0.51
	17	18	1	1.98
	18	19	1	0.74
	19	20	1	2.74
	20	21	1	1.7
	21	22	1	1.58
TPGC0082	23	24	1	0.76
	8	9	1	0.88
	10	11	1	1.98
	11	12	1	1.27
	12	13	1	3.99
	13	14	1	4.99
	14	15	1	0.52
	16	17	1	0.55
	18	19	1	1.07
	19	20	1	1.9
TPGC0080	20	21	1	2.44
	0	1	1	2.76
TPGC0081	39	40	1	2.68
	27	28	1	8.8
TPGC0085	28	29	1	1.11
	29	30	1	1.85

Hole-ID	From (m)	To (m)	Interval (m)	Au (g/t)
	55	56	1	1.58
	57	58	1	0.5
	58	59	1	2.16
	59	60	1	3.74
TPGC0112	25	26	1	0.98
	42	43	1	1.86
	45	46	1	1.74
	47	48	1	1.15
	48	49	1	5.44
	49	50	1	0.53
	42	43	1	1.43
TPGC0062	43	44	1	0.97
	45	46	1	1.1
	22	23	1	6
TPGC0066	23	24	1	23.9
	24	25	1	7.85
	25	26	1	1.07
	26	27	1	6.46
	27	28	1	0.55
	33	34	1	0.52
	40	41	1	0.94
TPGC0067	41	42	1	1.89
	33	34	1	0.76
TPGC0068	14	15	1	8.08
	15	16	1	40
	16	17	1	2.74
	17	18	1	0.9
TPGC0069	28	29	1	1.37
	11	12	1	1.34
	12	13	1	12.1
TPGC0072	13	14	1	2.59
	14	15	1	0.53
	30	31	1	1.02
	17	18	1	0.62
TPGC0073	18	19	1	0.62
	19	20	1	1.22
	23	24	1	1.42
	24	25	1	0.63
	19	20	1	21.6
TPGC0051	20	21	1	5.92
	24	25	1	0.78
	15	16	1	2.44
TPGC0053	28	29	1	0.96
	16	17	1	1.78
TPGC0055	24	25	1	3.23
	25	26	1	0.81
	12	13	1	0.75
TPGC0058	13	14	1	1.65
	12	13	1	0.75
TPGC0061	13	14	1	1.65

Hole-ID	From (m)	To (m)	Interval (m)	Au (g/t)
	30	31	1	6.52
	31	32	1	0.73
	36	37	1	3.46
	50	51	1	0.5
TPGC0089	44	45	1	2.47
TPGC0090	25	26	1	3.19
	26	27	1	1.88
	27	28	1	0.59
TPGC0091	3	4	1	0.5
	14	15	1	3.1
	15	16	1	5.12
	16	17	1	6.1
	17	18	1	0.47
	18	19	1	3.68
	19	20	1	1.02
	20	21	1	2.38
TPGC0094	26	27	1	2.1
	41	42	1	1.01
	43	44	1	8.24
	39	40	1	3.14
TPGC0099	40	41	1	1.74
	41	42	1	0.77
	42	43	1	9.84
	43	44	1	3.26
	44	45	1	2.04
	45	46	1	7.58
TPGC0100	19	20	1	1.02
	20	21	1	14.9
	21	22	1	1.23
	22	23	1	1.22
	23	24	1	1.64
	27	28	1	1.33
	28	29	1	12.2
	36	37	1	1.07

Hole-ID	From (m)	To (m)	Interval (m)	Au (g/t)
	14	15	1	6.13
	15	16	1	5.81
	16	17	1	2.52
	25	26	1	2.68
TPGC0063	16	17	1	11.2
	17	18	1	5.65
	18	19	1	0.85
	19	20	1	3.17
TPGC0064	6	7	1	2.1
	7	8	1	2.78
	8	9	1	1.01
	9	10	1	2.38
	10	11	1	1.56
	13	14	1	0.67
TPGC0054	25	26	1	5.98
	26	27	1	0.51
	27	28	1	8.96
TPGC0057	25	26	1	1.03
	26	27	1	0.5
	28	29	1	5.06
	29	30	1	0.78
	30	31	1	1.21
	31	32	1	1.64
TPGC0056	32	33	1	3.15
	43	44	1	2.81
	44	45	1	5.29
	45	46	1	2.45
	46	47	1	7.97
	57	58	1	0.86
	43	44	1	0.67
TPGC0059	45	46	1	1.45
	47	48	1	0.75
	48	49	1	2.7
	25	26	1	3.88
TPGC0060	26	27	1	1.49
	28	29	1	0.73
	29	30	1	1.66
	30	31	1	1.91
	31	32	1	2.88
	32	33	1	3.8

The Mt Dimer Taipan mineralised system remains open to the north and south, with potential to extend mineralisation along the southern strike. This presents an opportunity to further grow the current Mineral Resource and expand the broader gold and silver inventory across the Mt Dimer Taipan Project and adjoining tenements.

A summary of important assessment and reporting criteria used for this Exploration Results

announcement is provided in JORC Table 1 in accordance with the checklist in the Australian Code for the Reporting of Exploration Results, Mineral Resources, and Ore Reserves (the JORC Code, 2012).

Operational Progress Updates and Strategic Partnership

EMC is advancing mining activities at Mt Dimer in partnership with MEGA Resources Pty Ltd (“MEGA”) under the Right to Mine Agreement signed in October 2025. This agreement provides EMC with access to up to A\$18.6 million in non-dilutive funding² while leveraging MEGA’s mining expertise to progress development of the project.

Following the commencement of site works in November 2025 and first ore mining in January 2026³, mining activities have continued to progress in line with the development schedule. More than 90,000 tonnes of ore have been delivered to the ROM pad to date, providing a substantial stockpile ahead of the planned toll-treatment processing campaign.

MT DIMER TAIPAN PROJECT

The Mt Dimer Mining Lease (M77/515) has a long exploration history since 1992. EMC acquired the project in 2020, including exploration tenement (E77/2383) that adjoins to the west of M77/515 (Figure 6).

A Maiden Inferred Mineral Resource Estimate (JORC Code 2012) for the Mt Dimer-Taipan Gold and Silver Project – **722kt @ 2.10g/t Au for 48,545 ounces of gold and 3.84g/t Ag for 89,011 ounces of silver**, reported in 2021⁴, using a cut off 1.0g/t Au for resource sitting below the 380mRL (Table 2).

Table 2: Mt Dimer- Taipan Inferred Resource Classification using a 0.5g/t and 1.0g/t Au cut-off grades

Deposit	Cut-off (g/t) Au	Tonnes kt	Grade (g/t) Au	Au Oz	Grade (g/t) Ag	Ag Oz
Laterite	0.5g/t Au	7.7	0.59	145	0.04	11.1
Vein system above 380mRL	0.5g/t Au	665	2.0	42,700	3.64	77,800
Vein system below 380mRL	1.0g/t Au	50	3.2	5,700	6.98	11,200
Total		722		48,545		89,011

² EMC ASX Announcement, [EMC Executes Agreement to Mine Mt Dimer Taipan Gold & Silver Project, WA](#), dated 28 October 2025

³ EMC ASX Announcement, [Mining Operations Commence at Mt Dimer Taipan Gold Project, WA](#), dated 12 January 2026

⁴ ASX: TSC announcement; [Maiden JORC Resource Defined at Mt Dimer Gold and Silver Project in WA](#), dated 31 May 2021.

The Mt Dimer Taipan Project is fully permitted, with the Mining Proposal and Mine Closure Plan approved by DMPE⁵.

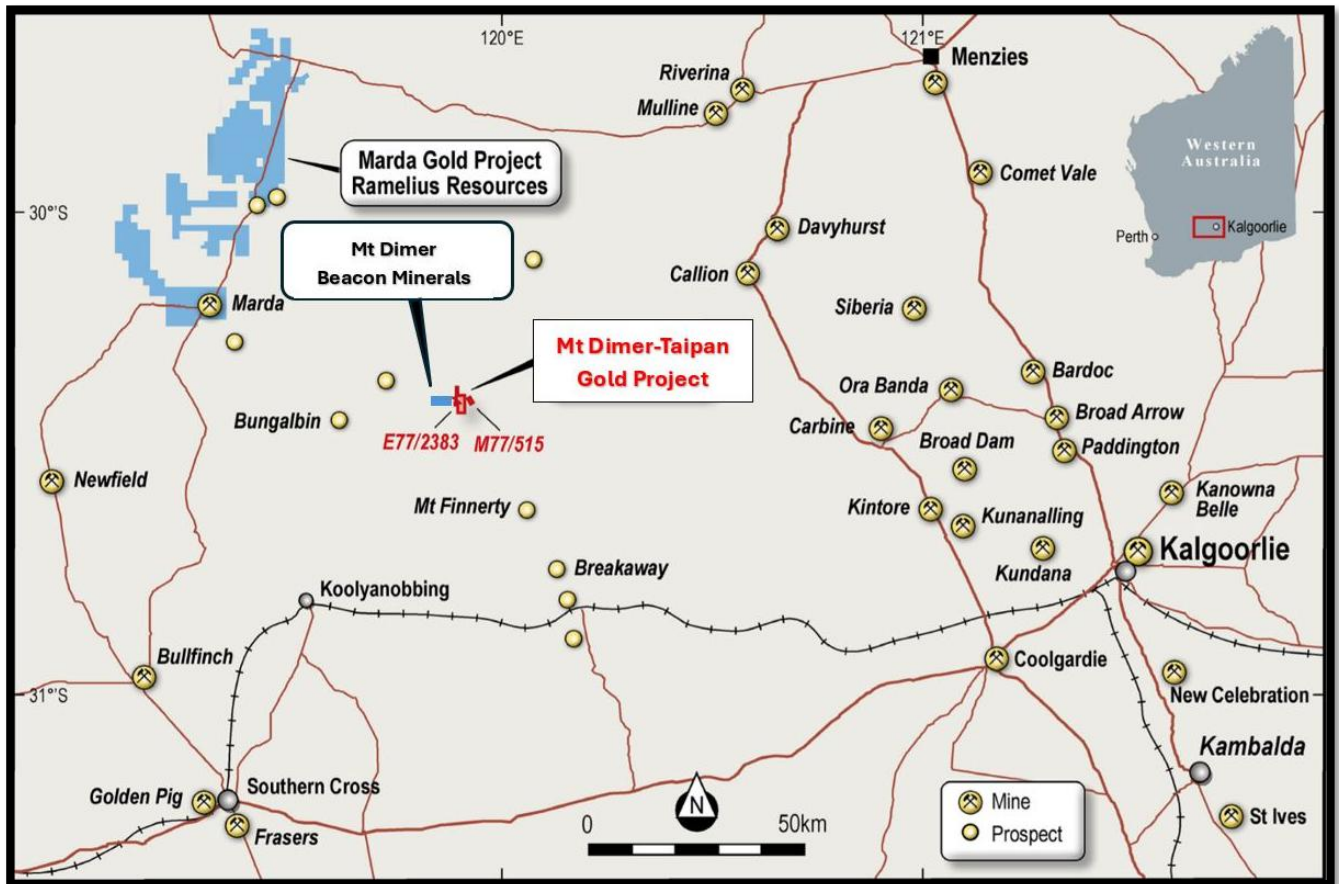


Figure 6: Mt Dimer Taipan Gold project location map

ENDS

This Announcement has been authorised for market release by the Board of Everest Metals Corporation Ltd.

Enquiries:

Mark Caruso | Executive Chair & CEO
 Phone: +61 (08) 9468 9855
 Email: enquiries@everestmetals.au

Simon Phillips | Business Development & IR
 Phone: +61 (08) 9468 9855
 Email: enquiries@everestmetals.au

⁵ EMC ASX Announcement, [EMC Secures Approval To Commence Mining At Mt Dimer Taipan Gold & Silver Project In Q4 2025](#). Dated 5 August 2025

JORC and Previous Disclosure

The information in this announcement that relates to Exploration Results and the Mt Edon Mineral Resource is based on information previously disclosed under the JORC Code (2012) in the following Company ASX announcements that are all available on the Company's website (www.everestmetals.au) and the ASX website (www.asx.com.au) under the Company's ticker code "EMC":

- 31 May 2021, Maiden JORC Resource Defined at Mt Dimer Gold and Silver Project in WA.
- 1 August 2025, Initial Exploration Drilling Confirms Further Gold Potential at Mt Dimer Taipan Project, WA.
- 5 August 2025, EMC Secures Approval to Commence Mining at Mt Dimer Taipan Gold & Silver Project in Q4 2025, WA.
- 28 October 2025, EMC Executes Agreement to Mine Mt Dimer Taipan Gold & Silver Project, WA.
- 6 November 2025, EMC Commences Resource Upgrade Drilling at Mt Dimer Taipan Gold Project, WA.
- 18 December 2025, High-Grade Gold Hits Up To 6m @ 10.2 g/t Au Confirms Extensions at Mt Dimer Taipan.
- 12 January 2026, Mining Operations Commence at Mt Dimer Taipan Gold Project, WA.
- 29 January 2026, EMC Accelerates Gold and Silver Mining at Mt Dimer Taipan Gold Project.
- 13 March 2026, EMC drilling hits Bonanza grades at Mt Dimer Taipan Gold Project.

The Company confirms that it is not aware of any new information or data that materially affects the information included in the original market announcements and that all material assumptions and technical parameters underpinning the relevant market announcements continue to apply and have not materially changed.

Competent Person Statement

The information in this report related to Exploration results is based on information compiled and approved for release by Mr Bahman Rashidi, who is a member of the Australasian Institute of Mining and Metallurgy (AusIMM) and a Registered Professional Geoscientist (RPGeo) in the field of Mineral Exploration and Industrial Minerals with the Australian Institute of Geoscientists (AIG). Mr Rashidi is chief geologist and a full-time employee of the Company. He is also a shareholder of Everest Metals Corporation. He has sufficient experience which is relevant to the style of mineralisation and types of deposit under consideration and to the activity, he is undertaking to qualify as a Competent Person in accordance with the JORC Code (2012). The information from Mr Rashidi was prepared under the JORC Code (2012). Mr Rashidi consents to the inclusion in this ASX release in the form and context in which it appears.

The information in this report relates to Mineral Resource of Mt Dimer-Taipan project is based on work reviewed and compiled by Mr. Stephen F Pearson, a Competent Person and Member of the Australasian Institute of Mining and Metallurgy and the Australian Institute of Geoscientists. Mr. Pearson is a beneficiary of a trust which is a shareholder of the Company. Mr. Pearson is a Senior Geologist for GEKO-Co Pty Ltd, he was consultant to the Company. He has sufficient experience relevant to the style of mineralisation and type of deposit under consideration and to the activity that he is undertaking to qualify as a Competent Person as defined in the 2012 Edition of the JORC. Mr. Pearson consents to the inclusion in this report of the information in the form and context in which it appears.

Forward Looking and Cautionary Statement

This report may contain forward-looking statements. Any forward-looking statements reflect management's current beliefs based on information currently available to management and are based on what management believes to be reasonable assumptions. It should be noted that a number of factors could cause actual results, or expectations to differ materially from the results expressed or implied in the forward-looking statements.

The interpretations and conclusions reached in this report are based on current geological theory and the best evidence available to the authors at the time of writing. It is the nature of all scientific conclusions that they are founded on an assessment of probabilities and, however high these probabilities might be, they make no claim for complete certainty. Any economic decisions that might be taken based on interpretations or conclusions contained in this report will therefore carry an element of risk. This report contains forward-looking statements that involve several risks and uncertainties. These forward-looking statements are expressed in good faith and believed to have a reasonable basis. These statements reflect current expectations, intentions or strategies regarding the future and assumptions based on currently available information.

Should one or more of the risks or uncertainties materialise, or should underlying assumptions prove incorrect, actual results may vary from the expectations, intentions and strategies described in this report. No obligation is assumed to update forward-looking statements if these beliefs, opinions, and estimates should change or to reflect other future developments.

ASX Listing Rule 5.23.2

Everest Metals Corporation Limited confirms that it is not aware of any new information or data that materially affects the information included in this market announcement and that all material assumptions and technical parameters underpinning the estimates in this market announcement continue to apply and have not materially changed.

About Everest Metals Corporation

Everest Metals Corporation Ltd (EMC) is an ASX listed Western Australian resource company focused on discoveries of Gold, Silver, Base Metals and Critical Minerals in Tier-1 jurisdictions. The Company has high quality Precious Metal, Battery Metal, Critical Mineral Projects in Australia and the experienced management team with strong track record of success are dedicated to the mineral discoveries and advancement of these company's highly rated projects.

EMC's key projects include:

REVERE GOLD PROJECT: located in a proven prolific gold producing region of Western Australia along an inferred extension of the Andy Well Greenstone Shear System with known gold occurrences and strong Coper/Gold potential at depth.

MT EDON CRITICAL MINERAL PROJECT: located in the Southern portion of the Paynes Find Greenstone Belt – area known to host swarms of Pegmatites and highly prospective for Critical Metals. The project sits on granted Mining Lease.

MT DIMER TAIPAN GOLD PROJECT: located around 120km north-east of Southern Cross, the Mt Dimer Gold & Silver Project comprises a mining lease, with historic production and known mineralisation, and adjacent exploration license.

For more information about the EMC's projects, please visit the Company website at:

www.everestmetals.au



Appendix 1 Details of RC drilling completed at Mt Dimer Taipan Project

Hole ID	Easting	Northing	Elevation (m)	EOH*	Dip (degrees)	Azimuth (degrees)
TPGC0051	778333.2559	6634204.047	449.515	36	-60	60
TPGC0052	778343.4263	6634209.655	449.886	24	-60	60
TPGC0053	778319.8715	6634207.876	449.585	28	-60	60
TPGC0054	778310.125	6634214.696	449.722	30	-60	60
TPGC0055	778318.921	6634219.518	449.396	30	-60	60
TPGC0056	778292.334	6634216.136	449.855	60	-60	60
TPGC0057	778301.054	6634221.103	449.992	36	-60	60
TPGC0058	778311.943	6634227.133	449.641	30	-60	60
TPGC0059	778287.216	6634224.798	450.017	60	-60	60
TPGC0060	778296.558	6634230.055	450.033	42	-60	60
TPGC0061	778305.068	6634234.752	449.79	30	-60	60
TPGC0062	778284.701	6634234.769	450.114	60	-60	60
TPGC0063	778298.79	6634242.806	449.548	30	-60	60
TPGC0064	778305.533	6634246.384	449.849	30	-60	60
TPGC0065	778279.437	6634243.574	450.078	48	-60	60
TPGC0066	778291.35	6634249.83	449.901	36	-60	60
TPGC0067	778274.647	6634252.453	449.705	48	-60	60
TPGC0068	778283.853	6634257.284	449.575	42	-60	60
TPGC0069	778291.642	6634261.534	449.759	36	-60	60
TPGC0070	778276.835	6634265.025	449.58	42	-60	60
TPGC0071	778265.897	6634270.155	449.695	48	-60	60
TPGC0072	778273.924	6634274.446	449.828	42	-60	60
TPGC0073	778280.94	6634278.592	449.55	36	-60	60
TPGC0074	778289.568	6634283.319	450.026	24	-60	60
TPGC0075	778263.268	6634279.794	449.759	42	-60	60
TPGC0076	778271.773	6634284.894	449.83	30	-60	60
TPGC0077	778255.445	6634287.068	450.231	48	-60	60
TPGC0078	778269.061	6634294.574	449.868	24	-60	60
TPGC0079	778277.4449	6634299.098	449.854	12	-50	60
TPGC0080	778246.689	6634293.702	450.261	60	-60	60
TPGC0081	778253.472	6634297.46	450.336	42	-60	60
TPGC0082	778259.457	6634300.839	450.026	30	-45	60
TPGC0083	778258.7555	6634300.509	450	36	-60	60
TPGC0084	778276.4818	6634309.769	450.268	10	-90	0
TPGC0085	778242.751	6634303.29	450.192	54	-60	60
TPGC0086	778254.103	6634309.507	450.178	48	-60	60
TPGC0087	778255.1968	6634309.399	450.104	30	-45	60
TPGC0088	778269.4325	6634317.206	450.753	10	90	0
TPGC0089	778237.186	6634311.187	450.123	54	-60	60
TPGC0090	778245.551	6634315.882	450.34	54	-70	60
TPGC0091	778247.997	6634317.453	450.278	48	-60	60

Hole ID	Easting	Northing	Elevation (m)	EOH*	Dip (degrees)	Azimuth (degrees)
TPGC0092	778252.6251	6634319.468	450.16	30	-45	60
TPGC0093	778265.9635	6634327.108	450.5	12	-90	0
TPGC0094	778231.8	6634320.128	450.235	60	-70	60
TPGC0095	778235.0131	6634321.281	450.175	54	-60	60
TPGC0096	778243.1572	6634325.826	450.208	42	-60	60
TPGC0097	778247.1257	6634327.616	450.245	30	-45	60
TPGC0098	778262.86	6634336.944	450.617	10	-90	0
TPGC0099	778223.488	6634326.767	450.02	60	-60	60
TPGC0100	778236.295	6634334.02	450.18	42	-60	60
TPGC0101	778243.0481	6634337.228	450.347	30	-45	60
TPGC0102	778257.7224	6634345.424	450.306	10	-90	0
TPGC0103	778224.297	6634338.596	450.311	60	-70	60
TPGC0104	778225.774	6634339.318	450.377	60	-60	60
TPGC0105	778232.934	6634343.617	450.222	36	-60	60
TPGC0106	778240.208	6634347.241	450.617	24	-60	60
TPGC0107	778240.732	6634347.527	450.83	30	-45	60
TPGC0108	778255.4221	6634355.74	450.362	10	-90	0
TPGC0109	778218.492	6634346.652	450.107	60	-60	60
TPGC0110	778233.081	6634354.559	450.19	36	-60	60
TPGC0111	778219.84	6634359.007	450.213	60	-60	60
TPGC0112	778222.125	6634360.131	450.109	60	-60	60
TPGC0113	778226.5257	6634362.261	449.977	42	-50	60
TPGC0114	778231.821	6634365.841	450.602	36	-45	60
TPGC0115	778249.2873	6634374.924	450.513	12	-90	0
TPGC0116	778249.8836	6634375.197	450.536	18	-60	60
TPGC0117	778251.861	6634382.745	450.327	12	-60	60
TPGC0118	778217.7488	6634368.887	450.087	54	-60	60
TPGC0119	778219.001	6634369.791	450.24	48	-60	60
TPGC0123	778217.561	6634380.063	449.98	48	-60	60
TPGC0124	778218.7299	6634380.953	449.948	48	-60	60
TPGC0125	778224.7207	6634384.386	450.278	30	-60	60
TPGC0127	778202.6825	6634383.359	449.91	54	-60	60
TPGC0128	778210.3085	6634387.656	449.837	48	-60	65
TPGC0129	778218.2952	6634392.207	450.094	36	-60	60
TPGC0130	778226.6475	6634397.034	450.403	24	-60	60
TPGC0131	778234.0851	6634400.907	450.231	12	-60	60
TPGC0132	778217.0455	6634403.216	450.377	36	-60	65
TPGC0133	778226.5929	6634408.318	450.256	18	-60	60
TPGC0134	778206.0455	6634408.368	450.172	24	-60	60
TPGC0135	778217.1196	6634414.757	450.379	24	-60	60
TPGC0136	778225.1955	6634419.168	450.151	12	-60	65
TPGC0137	778204.919	6634419.565	450.182	18	-90	0
TPGC0138	778211.7636	6634418.794	450.191	24	-60	60
TPGC0139	778216.8128	6634421.162	450.166	24	-45	60

Section 1 Sampling Techniques and Data

(Criteria in this section apply to all succeeding sections)

Criteria	JORC Code explanation	Commentary
Sampling techniques	<ul style="list-style-type: none"> Nature and quality of sampling (eg cut channels, random chips, or specific specialised industry standard measurement tools appropriate to the minerals under investigation, such as down hole gamma sondes, or handheld XRF instruments, etc). These examples should not be taken as limiting the broad meaning of sampling. Include reference to measures taken to ensure sample representivity and the appropriate calibration of any measurement tools or systems used. Aspects of the determination of mineralisation that are Material to the Public Report. In cases where 'industry standard' work has been done this would be relatively simple (eg 'reverse circulation drilling was used to obtain 1 m samples from which 3 kg was pulverised to produce a 30 g charge for fire assay'). In other cases more explanation may be required, such as where there is coarse gold that has inherent sampling problems. Unusual commodities or mineralisation types (eg submarine nodules) may warrant disclosure of detailed information. 	<ul style="list-style-type: none"> All drilling and sampling were undertaken in an industry standard manner. Sampled exclusively by Reverse Circulation (RC) drilling, drill chips. Sampling was taken continuously downhole. A mixture of small, crushed pieces of rock (RC Chips) and pulverised material are systematically collected by drill mounted cyclone and samples splitter. One-meter samples were collected from the drill cyclone and splitter into prenumbered calico bags at a weight of about 2kg each. The cyclone and sample splitter are cleaned after each drill hole. Sample were submitted directly to Bureau Veritas laboratory in Kalgoorlie.
Drilling techniques	<ul style="list-style-type: none"> Drill type (eg core, reverse circulation, open-hole hammer, rotary air blast, auger, Bangka, sonic, etc) and details (eg core diameter, triple or standard tube, depth of diamond tails, face-sampling bit or other type, whether core is oriented and if so, by what method, etc). 	<ul style="list-style-type: none"> Reverse Circulation (RC) drilling was used with 137mm diameter (5.4 inch) and a total of 85 RC holes for a total of 3078m were completed. Down holes surveys are completed on all drill holes using a gyro -Reflex Gyro RC drilling is an industry standard drilling practice.
Drill sample recovery	<ul style="list-style-type: none"> Method of recording and assessing core and chip sample recoveries and results assessed. Measures taken to maximise sample recovery and ensure representative nature of the samples. Whether a relationship exists between sample recovery and grade and whether sample bias may have occurred due to preferential loss/gain of fine/coarse material. 	<ul style="list-style-type: none"> No relationship has been determined between sample recovery and grade, and no sample bias is believed to exist. Due to the style of the deposit, it is considered that any material loss is not significant to the assessment of mineralisation.
Logging	<ul style="list-style-type: none"> Whether core and chip samples have been geologically and geotechnically logged to a level of detail to support appropriate Mineral Resource estimation, mining studies and metallurgical studies. Whether logging is qualitative or quantitative in nature. Core (or costean, channel, etc) photography. The total length and percentage of the relevant intersections logged. 	<ul style="list-style-type: none"> RC chips are being systematically logged and all geological information available recorded by the logging geologist. RC Chips logging is more qualitative in nature as the rock has been crushed during the drilling process and some geological information destroyed during this process. 100% of the intervals are logged and special attention was given to mineralisation intersected.

Criteria	JORC Code explanation	Commentary
Sub-sampling techniques and sample preparation	<ul style="list-style-type: none"> • <i>If core, whether cut or sawn and whether quarter, half or all core taken.</i> • <i>If non-core, whether riffled, tube sampled, rotary split, etc and whether sampled wet or dry.</i> • <i>For all sample types, the nature, quality and appropriateness of the sample preparation technique.</i> • <i>Measures taken to ensure that the sampling is representative of the in situ material collected, including for instance results for field duplicate/second-half sampling.</i> 	<ul style="list-style-type: none"> • All RC samples were submitted to external certified analytical laboratory, Bureau Veritas laboratory – Kalgoorlie. • The ~2kg sample were considered appropriate sample size for the analysis of RC samples. • 55 field duplicates, blanks and standards were submitted for quality assurance and QA/QC analysis. Repeat assays were undertaken on pulp samples at the discretion of the laboratory.
Quality of assay data and laboratory tests	<ul style="list-style-type: none"> • <i>The nature, quality and appropriateness of the assaying and laboratory procedures used and whether the technique is considered partial or total.</i> • <i>For geophysical tools, spectrometers, handheld XRF instruments, etc, the parameters used in determining the analysis including instrument make and model, reading times, calibrations factors applied and their derivation, etc.</i> • <i>Nature of quality control procedures adopted (eg standards, blanks, duplicates, external laboratory checks) and whether acceptable levels of accuracy (ie lack of bias) and precision have been established.</i> 	<ul style="list-style-type: none"> • RC drilling samples were analysed for gold by Fire Assay AAS finish method (FA/AAS) with 40g charge. • Sample preparation checks (QC) were carried out by the laboratory as part of its internal procedures. • No geophysical tools or handheld instruments were used to determine any element concentrations in this report. • Bureau Veritas laboratory includes in each sample batch assayed certified reference materials, blanks and up to 5% replicates. • Inter laboratory cross-checks analysis programmes have not been conducted at this stage. • QA/QC samples submitted every 50 samples utilising multiple different CRM providers.
Verification of sampling and assaying	<ul style="list-style-type: none"> • <i>The verification of significant intersections by either independent or alternative company personnel.</i> • <i>The use of twinned holes.</i> • <i>Documentation of primary data, data entry procedures, data verification, data storage (physical and electronic) protocols.</i> • <i>Discuss any adjustment to assay data.</i> 	<ul style="list-style-type: none"> • Drillholes locations are captured digitally on RTKGPS system and then uploaded into database system (which is backed up daily). • Assay data is provided as .csv/xls files from Bureau Veritas and into the sample database. • No twinned hole was completed.
Location of data points	<ul style="list-style-type: none"> • <i>Accuracy and quality of surveys used to locate drill holes (collar and down-hole surveys), trenches, mine workings and other locations used in Mineral Resource estimation.</i> • <i>Specification of the grid system used.</i> • <i>Quality and adequacy of topographic control.</i> 	<ul style="list-style-type: none"> • Grid system used is Australian Geodetic GDA2020- MGA Zone 50. • The locations of all drillholes were recorded using a RTKGPS and appropriately set control. • A more accurate survey pickup will be completed at the end of the program, to ensure data is appropriate for geological modelling. • Holes were surveyed using a Reflex Continuous Gyro system.
Data spacing and distribution	<ul style="list-style-type: none"> • <i>Data spacing for reporting of Exploration Results.</i> • <i>Whether the data spacing, and distribution is sufficient to establish the degree of geological and grade continuity appropriate for the Mineral Resource and Ore Reserve estimation procedure(s) and classifications applied.</i> 	<ul style="list-style-type: none"> • Exploration results are reported for single holes only. • Drillhole spacing is adequate to establish geological and grade continuity for the Mt Dimer Taipan grade control program and upgrade mineral resource estimate. • No Mineral Resources or Ore Reserves are being reported.

Criteria	JORC Code explanation	Commentary
	<ul style="list-style-type: none"> Whether sample compositing has been applied. 	<ul style="list-style-type: none"> No sample compositing has been applied.
Orientation of data in relation to geological structure	<ul style="list-style-type: none"> Whether the orientation of sampling achieves unbiased sampling of possible structures and the extent to which this is known, considering the deposit type. If the relationship between the drilling orientation and the orientation of key mineralised structures is considered to have introduced a sampling bias, this should be assessed and reported if material. 	<ul style="list-style-type: none"> Deposits in the Mt Dimer Taipan is generally oriented on southwest trends has primarily been focused on ~60° dipping holes.
Sample security	<ul style="list-style-type: none"> The measures taken to ensure sample security. 	<ul style="list-style-type: none"> All samples were assigned a unique sample number in the field. Samples were placed in calico sample bags clearly marked with the assigned sample number and transported by company transport to the Bureau Veritas sample preparation facility in Kalgoorlie, Western Australia. Each sample was given a barcode at the laboratory, and the laboratory reconciled the received sample list with physical samples. Barcode readers were used at the different stages of the analytical process. The laboratory uses a LIMS system that further ensures the integrity of results.
Audits or reviews	<ul style="list-style-type: none"> The results of any audits or reviews of sampling techniques and data. 	<ul style="list-style-type: none"> There have been no detailed external audits or reviews undertaken. EMC has conducted an internal technical review of the available geological and other publicly available data.

Section 2 Reporting of Exploration Results

(Criteria listed in the preceding section apply to this sections)

Criteria	Statement	Commentary
Mineral tenement and land tenure status	<ul style="list-style-type: none"> Type, reference name/number, location and ownership including agreements or material issues with third parties such as joint ventures, partnerships, overriding royalties, native title interests, historical sites, wilderness or national park and environmental settings. The security of the tenure held at the time of reporting along with any known impediments to obtaining a licence to operate in the area. 	<ul style="list-style-type: none"> The Mt Dimer Taipan project is located approximately 150km west of Kalgoorlie and about 120 km northeast of Southern Cross. The tenement and M77/515 is held by Oz Gold Group (100%) and is valid until 27/5/2034. Oz Gold Group is 100% owned by Everest Metals Corporation (EMC) and the company has 100% of the mineral rights on M77/515. No aboriginal sites nor heritage places have been declared or recorded within tenement. Currently the tenements are in good standing. There are no known impediments to operate in the area.
Exploration done by other parties	<ul style="list-style-type: none"> Acknowledgment and appraisal of exploration by other parties. 	<ul style="list-style-type: none"> Significant work has been undertaken by previous tenement holders, with several ASX releases and reports available on WAMEX detailing the historical activities at the Mt Dimer Project area. Western Mining Corporation: 1968 – 1989

Criteria	Statement	Commentary
		<ul style="list-style-type: none"> • Cadre Resources: 1987 – 1988 • Placer Exploration: 1988 – 1991 • Taipan Resources NL: 1992 – 1996 • Burmine limited: 1993 – 1995 • Tectonic Resources: 1995 – 2008 • Polaris Metals: 2010 – 2016 • Twenty Seven Co (ASX:TSC): 2020 – 2022 • Everest Metals Corporation (ASX:EMC): 2024-2026
Geology	<ul style="list-style-type: none"> • <i>Deposit type, geological setting and style of mineralisation.</i> 	<ul style="list-style-type: none"> • The project lies within the southern portion of the Archean Diemals-Marda Greenstone Belt, within the Yilgarn Block of Western Australia. • Geological interpretation indicates that the general local stratigraphy consists of mafic and ultramafic volcanics with greenschist to amphibolite facies metamorphism. However, east of the Helena-Aurora Ranges, the BIF is truncated by the northwest trending, sinistral Mt Dimer shear zone which separates the Marda-Diemals greenstone belt from the Hunt Range greenstone belt. • Gold and silver mineralisation is hosted within the talc-chlorite and amphibolite chlorite schists and increase in quartz/ quartz veins.
Drill hole Information	<ul style="list-style-type: none"> • <i>A summary of all information material to the understanding of the exploration results including a tabulation of the following information for all Material drill holes:</i> <ul style="list-style-type: none"> ○ <i>easting and northing of the drill hole collar</i> ○ <i>elevation or RL (Reduced Level – elevation above sea level in metres) of the drill hole collar</i> ○ <i>dip and azimuth of the hole</i> ○ <i>down hole length and interception depth</i> ○ <i>hole length.</i> • <i>If the exclusion of this information is justified on the basis that the information is not Material and this exclusion does not detract from the understanding of the report, the Competent Person should clearly explain why this is the case.</i> 	<ul style="list-style-type: none"> • A summary of the 85 RC holes (3078m) is reflected in this release. • The minimum hole length is 10m, maximum 60m. • East collar ranges – 778202.6mE to 778343.4mE. • North collar ranges – 6634204mN to 6634421.1mN. • Collar elevation ranges – 449.3mRL to 450.8mRL. • Azimuth ranges – drill sections are orientated in different angle to hit the mineralised zones, ranges from 12° to 270°. • Dip ranges – drilled between 50° and 60°.
Data aggregation methods	<ul style="list-style-type: none"> • <i>In reporting Exploration Results, weighting averaging techniques, maximum and/or minimum grade truncations (e.g. cutting of high grades) and cut-off grades are usually Material and should be stated.</i> • <i>Where aggregate intercepts incorporate short lengths of high grade results and longer lengths of low grade results, the procedure used for such aggregation should be stated and some typical examples of such aggregations should be shown in detail.</i> • <i>The assumptions used for any reporting of metal equivalent values should be clearly stated.</i> 	<ul style="list-style-type: none"> • As all samples are 1 metre in length, intersections reported are for each one metre interval from RC hole samples and mineral intercepts are reported as raw, with no top cutting conducted. • Mineralisation over 0.5g/t Au has been included in aggregation of sample intervals. Internal dilution is restricted to 3m or less within intercept intervals. • All intercepts are present in their 1m interval format in Table 1 in announcement. • No metal equivalent values are reported.

Criteria	Statement	Commentary
Relationship between mineralisation widths and intercept lengths	<ul style="list-style-type: none"> • <i>These relationships are particularly important in the reporting of Exploration Results.</i> • <i>If the geometry of the mineralisation with respect to the drill hole angle is known, its nature should be reported.</i> • <i>If it is not known and only the down hole lengths are reported, there should be a clear statement to this effect (e.g. 'down hole length, true width not known').</i> 	<ul style="list-style-type: none"> • Mineral intercepts have been recorded as downhole widths. The multiple different orientations of mineralisation present, with not all visually identifiable means an accurate true width is not possible.
Diagrams	<ul style="list-style-type: none"> • <i>Appropriate maps and sections (with scales) and tabulations of intercepts should be included for any significant discovery being reported. These should include, but not be limited to a plan view of drill hole collar locations and appropriate sectional views.</i> 	<ul style="list-style-type: none"> • A relevant map and diagram are included in the body of this report.
Balanced reporting	<ul style="list-style-type: none"> • <i>Where comprehensive reporting of all Exploration Results is not practicable, representative reporting of both low and high grades and/or widths should be practiced to avoid misleading reporting of Exploration Results.</i> 	<ul style="list-style-type: none"> • All significant results are provided in this report. EMC is reporting only significant intercepts greater than 0.5g/t with less than 3m of internal dilution. The report is considered balanced and provided in context. All drillhole zones not tabularised in this report can be interpreted as being insignificant in relation to Au grades.
Other substantive exploration data	<ul style="list-style-type: none"> • <i>Other exploration data, if meaningful and material, should be reported including (but not limited to): geological observations; geophysical survey results; geochemical survey results; bulk samples – size and method of treatment; metallurgical test results; bulk density, groundwater, geotechnical and rock characteristics; potential deleterious or contaminating substances.</i> 	<ul style="list-style-type: none"> • This report is considered to represent a balanced report.
Further work	<ul style="list-style-type: none"> • <i>The nature and scale of planned further work (eg tests for lateral extensions or depth extensions or large-scale step-out drilling).</i> • <i>Diagrams clearly highlighting the areas of possible extensions, including the main geological interpretations and future drilling areas, provided this information is not commercially sensitive.</i> 	<ul style="list-style-type: none"> • Work is underway to update the Mineral Resource.